

Acta Crystallographica Section E

## Structure Reports

Online

ISSN 1600-5368

2,4-Dihydroxy-*N'*-(4-methoxybenzylidene)benzohydrazideYun-Peng Diao,<sup>a</sup> Shan-Shan Huang,<sup>a</sup> Jian-Kui Zhang<sup>b</sup> and Ting-Guo Kang<sup>b\*</sup><sup>a</sup>School of Pharmacy, Dalian Medical University, Dalian 116044, People's Republic of China, and <sup>b</sup>Liaoning University of Traditional Chinese Medicine, Shenyang 110032, People's Republic of China

Correspondence e-mail: diaoyiwen@126.com

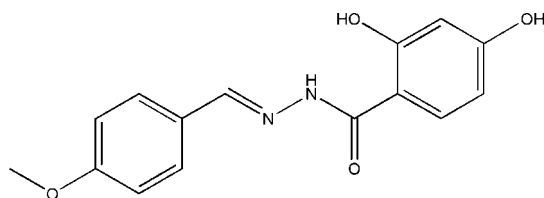
Received 21 December 2007; accepted 10 January 2008

Key indicators: single-crystal X-ray study;  $T = 298$  K; mean  $\sigma(\text{C}-\text{C}) = 0.003$  Å;  $R$  factor = 0.031;  $wR$  factor = 0.080; data-to-parameter ratio = 7.8.

The molecule of the title compound,  $\text{C}_{15}\text{H}_{14}\text{N}_2\text{O}_4$ , displays a *trans* configuration with respect to the hydrazide  $\text{C}=\text{N}$  bond. The dihedral angle between the two benzene rings is  $15.0$  ( $2$ )°. In the crystal structure, molecules are linked through intermolecular  $\text{O}-\text{H}\cdots\text{N}$  and  $\text{O}-\text{H}\cdots\text{O}$  hydrogen bonds, forming layers parallel to the *ab* plane; an intramolecular  $\text{N}-\text{H}\cdots\text{O}$  hydrogen bond is also present.

## Related literature

For the biological properties of Schiff base compounds, see: Brückner *et al.* (2000); Harrop *et al.* (2003); Ren *et al.* (2002). For related structures, see: Diao (2007); Diao *et al.* (2007); Li *et al.* (2007); Huang *et al.* (2007).



## Experimental

## Crystal data

$\text{C}_{15}\text{H}_{14}\text{N}_2\text{O}_4$   
 $M_r = 286.28$   
 Orthorhombic,  $Pna2_1$

$a = 12.494$  (3) Å  
 $b = 5.196$  (1) Å  
 $c = 20.825$  (4) Å

$V = 1351.9$  (5) Å<sup>3</sup>  
 $Z = 4$   
 Mo  $K\alpha$  radiation

$\mu = 0.10$  mm<sup>-1</sup>  
 $T = 298$  (2) K  
 $0.22 \times 0.20 \times 0.20$  mm

## Data collection

Bruker SMART CCD area-detector diffractometer  
 Absorption correction: multi-scan (SADABS; Bruker, 2000)  
 $T_{\min} = 0.978$ ,  $T_{\max} = 0.980$

7661 measured reflections  
 1519 independent reflections  
 1382 reflections with  $I > 2\sigma(I)$   
 $R_{\text{int}} = 0.025$

## Refinement

$R[F^2 > 2\sigma(F^2)] = 0.031$   
 $wR(F^2) = 0.079$   
 $S = 1.06$   
 1519 reflections  
 196 parameters  
 2 restraints

H atoms treated by a mixture of independent and constrained refinement  
 $\Delta\rho_{\text{max}} = 0.13$  e Å<sup>-3</sup>  
 $\Delta\rho_{\text{min}} = -0.15$  e Å<sup>-3</sup>

Table 1

Hydrogen-bond geometry (Å, °).

$D-H\cdots A$	$D-H$	$H\cdots A$	$D\cdots A$	$D-H\cdots A$
$\text{N2}-\text{H2A}\cdots\text{O3}$	0.901 (10)	1.94 (2)	2.646 (2)	134 (3)
$\text{O4}-\text{H4}\cdots\text{O2}^{\text{i}}$	0.82	1.85	2.671 (2)	174
$\text{O3}-\text{H3}\cdots\text{N1}^{\text{ii}}$	0.82	2.48	3.234 (2)	154
$\text{O3}-\text{H3}\cdots\text{O2}^{\text{ii}}$	0.82	2.14	2.788 (2)	136

Symmetry codes: (i)  $x + \frac{1}{2}, -y + \frac{7}{2}, z$ ; (ii)  $x + \frac{1}{2}, -y + \frac{5}{2}, z$ .

Data collection: SMART (Bruker, 2000); cell refinement: SAINT (Bruker, 2000); data reduction: SAINT; program(s) used to solve structure: SHELXTL (Sheldrick, 2008); program(s) used to refine structure: SHELXTL; molecular graphics: SHELXTL; software used to prepare material for publication: SHELXTL.

This project was supported by a research grant from Dalian Medical University.

Supplementary data and figures for this paper are available from the IUCr electronic archives (Reference: RZ2192).

## References

- Brückner, C., Rettig, S. J. & Dolphin, D. (2000). *Inorg. Chem.* **39**, 6100–6106.  
 Bruker (2000). SMART (Version 5.625), SAINT (Version 6.01) and SADABS (Version 2.03). Bruker AXS Inc., Madison, Wisconsin, USA.  
 Diao, Y.-P. (2007). *Acta Cryst.* **E63**, m1453–m1454.  
 Diao, Y.-P., Shu, X.-H., Zhang, B.-J., Zhen, Y.-H. & Kang, T.-G. (2007). *Acta Cryst.* **E63**, m1816.  
 Harrop, T. C., Olmstead, M. M. & Mascharak, P. K. (2003). *Chem. Commun.* pp. 410–411.  
 Huang, S.-S., Zhou, Q. & Diao, Y.-P. (2007). *Acta Cryst.* **E63**, o4659.  
 Li, K., Huang, S.-S., Zhang, B.-J., Meng, D.-L. & Diao, Y.-P. (2007). *Acta Cryst.* **E63**, m2291.  
 Ren, S., Wang, R., Komatsu, K., Bonaz-Krause, P., Zyrianov, Y., McKenna, C. E., Csipke, C., Tokes, Z. A. & Lien, E. J. (2002). *J. Med. Chem.* **45**, 410–419.  
 Sheldrick, G. M. (2008). *Acta Cryst.* **A64**, 112–122.

## supporting information

*Acta Cryst.* (2008). E64, o470 [doi:10.1107/S1600536808001104]

## 2,4-Dihydroxy-*N'*-(4-methoxybenzylidene)benzohydrazide

Yun-Peng Diao, Shan-Shan Huang, Jian-Kui Zhang and Ting-Guo Kang

### S1. Comment

Schiff base compounds have received much attention in recent years. Some Schiff base metal complexes have been found to have pharmacological and antitumor properties (Brückner *et al.*, 2000; Harrop *et al.*, 2003; Ren *et al.*, 2002). As part of our research programme on the synthesis and characterization of Schiff base compounds (Diao *et al.*, 2007; Diao, 2007; Li *et al.*, 2007; Huang *et al.*, 2007), we report here the structure of the title ligand.

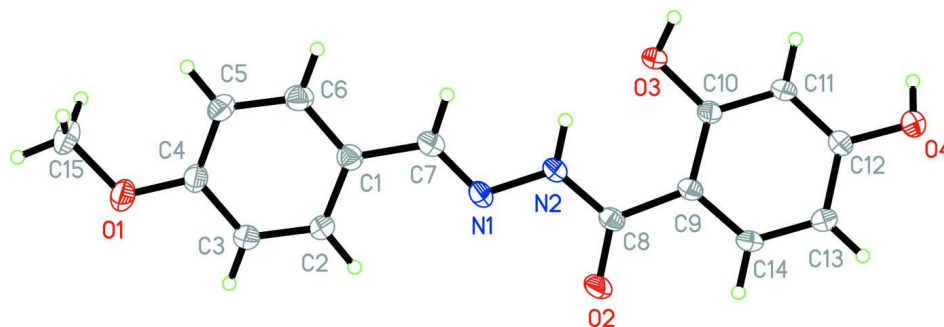
The molecule of the title compound displays a *trans* configuration with respect to the C=N bond (Fig. 1). The dihedral angle between the two benzene rings is 15.0 (2)°. The molecular conformation is stabilized by an intramolecular N—H···O hydrogen interaction (Table 1). In the crystal, molecules are linked through intermolecular O—H···N and O—H···O hydrogen bonds (Table 1), forming layers parallel to the *ab* plane (Fig. 2).

### S2. Experimental

4-Methoxybenzaldehyde (0.1 mmol, 13.6 mg) and 2,4-dihydroxybenzoic acid hydrazide (0.1 mmol, 16.8 mg) were dissolved in a 95% ethanol solution (10 ml). The mixture was stirred at room temperature to give a clear colourless solution. Crystals of the title compound were formed by gradual evaporation of the solvent over a period of three days at room temperature.

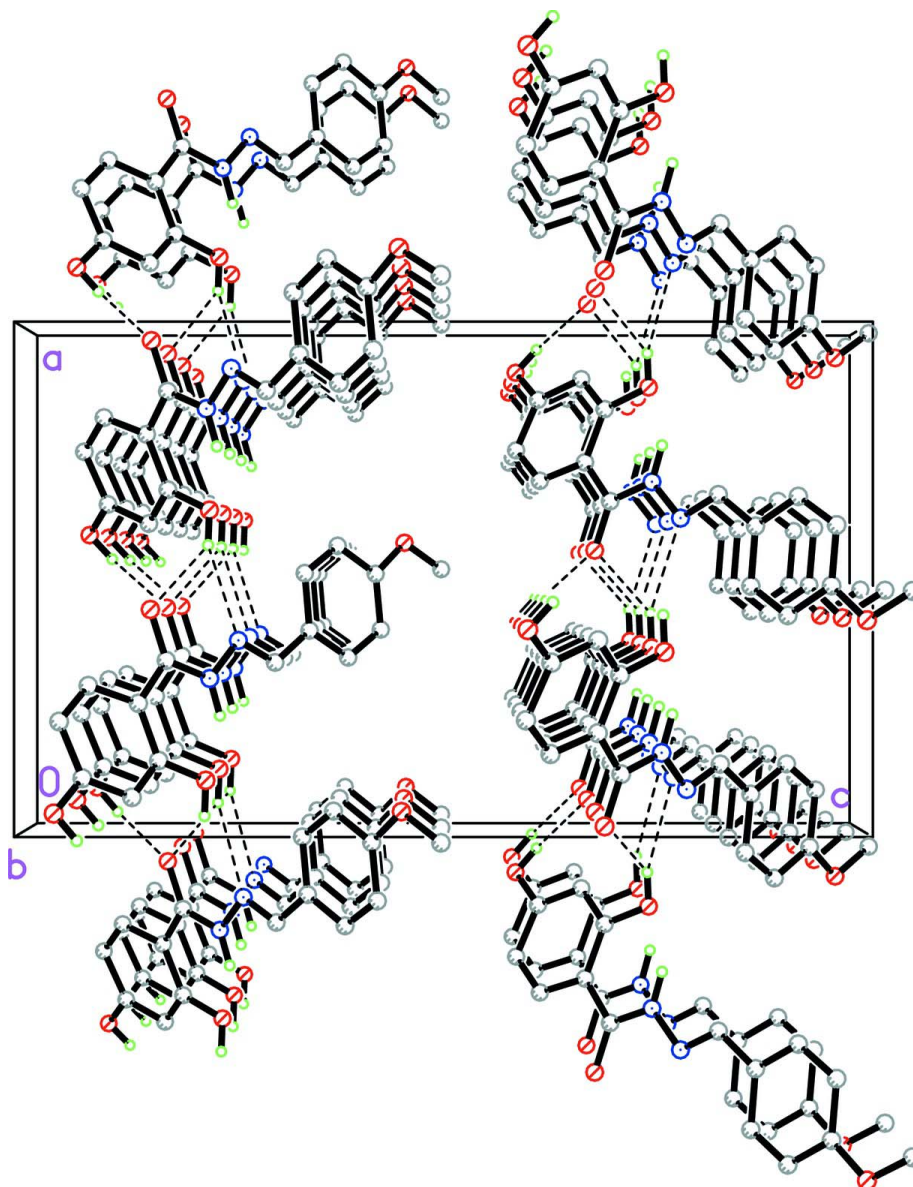
### S3. Refinement

Atom H2A was located in a difference Fourier map and refined isotropically, with the N—H distance restrained to 0.90 (1) Å. All other H atoms were placed in idealized positions and constrained to ride on their parent atoms, with O—H = 0.82 Å, C—H = 0.93–0.96 Å, and with  $U_{\text{iso}}(\text{H}) = 1.2U_{\text{eq}}(\text{C})$  or  $1.5U_{\text{eq}}(\text{C}, \text{O})$  for methyl and hydroxy H atoms. In the absence of significant anomalous scattering effects, Friedel opposites were merged in the final refinement.



**Figure 1**

The structure of the title compound with displacement ellipsoids drawn at the 30% probability level.



**Figure 2**

Crystal packing of the title compound viewed along the *b* axis. Intermolecular hydrogen bonds are shown as dashed lines.

### 2,4-Dihydroxy-*N'*-(4-methoxybenzylidene)benzohydrazide

#### Crystal data

$C_{15}H_{14}N_2O_4$

$M_r = 286.28$

Orthorhombic,  $Pna2_1$

Hall symbol:  $P\ 2c\ -2n$

$a = 12.494\ (3)\ \text{\AA}$

$b = 5.196\ (1)\ \text{\AA}$

$c = 20.825\ (4)\ \text{\AA}$

$V = 1351.9\ (5)\ \text{\AA}^3$

$Z = 4$

$F(000) = 600$

$D_x = 1.407\ \text{Mg m}^{-3}$

Mo  $K\alpha$  radiation,  $\lambda = 0.71073\ \text{\AA}$

Cell parameters from 3064 reflections

$\theta = 2.7\text{--}27.2^\circ$

$\mu = 0.10\ \text{mm}^{-1}$

$T = 298\ \text{K}$

Block, colourless

$0.22 \times 0.20 \times 0.20\ \text{mm}$

*Data collection*

Bruker SMART CCD area-detector  
diffractometer  
Radiation source: fine-focus sealed tube  
Graphite monochromator  
 $\omega$  scans  
Absorption correction: multi-scan  
(*SADABS*; Bruker, 2000)  
 $T_{\min} = 0.978$ ,  $T_{\max} = 0.980$

7661 measured reflections  
1519 independent reflections  
1382 reflections with  $I > 2\sigma(I)$   
 $R_{\text{int}} = 0.025$   
 $\theta_{\text{max}} = 27.0^\circ$ ,  $\theta_{\text{min}} = 2.0^\circ$   
 $h = -15 \rightarrow 15$   
 $k = -6 \rightarrow 5$   
 $l = -25 \rightarrow 26$

*Refinement*

Refinement on  $F^2$   
Least-squares matrix: full  
 $R[F^2 > 2\sigma(F^2)] = 0.031$   
 $wR(F^2) = 0.079$   
 $S = 1.06$   
1519 reflections  
196 parameters  
2 restraints  
Primary atom site location: structure-invariant  
direct methods

Secondary atom site location: difference Fourier  
map  
Hydrogen site location: inferred from  
neighbouring sites  
H atoms treated by a mixture of independent  
and constrained refinement  
 $w = 1/[\sigma^2(F_o^2) + (0.0468P)^2 + 0.123P]$   
where  $P = (F_o^2 + 2F_c^2)/3$   
 $(\Delta/\sigma)_{\text{max}} < 0.001$   
 $\Delta\rho_{\text{max}} = 0.13 \text{ e } \text{\AA}^{-3}$   
 $\Delta\rho_{\text{min}} = -0.15 \text{ e } \text{\AA}^{-3}$

*Special details*

**Geometry.** All e.s.d.'s (except the e.s.d. in the dihedral angle between two l.s. planes) are estimated using the full covariance matrix. The cell e.s.d.'s are taken into account individually in the estimation of e.s.d.'s in distances, angles and torsion angles; correlations between e.s.d.'s in cell parameters are only used when they are defined by crystal symmetry. An approximate (isotropic) treatment of cell e.s.d.'s is used for estimating e.s.d.'s involving l.s. planes.

**Refinement.** Refinement of  $F^2$  against ALL reflections. The weighted  $R$ -factor  $wR$  and goodness of fit  $S$  are based on  $F^2$ , conventional  $R$ -factors  $R$  are based on  $F$ , with  $F$  set to zero for negative  $F^2$ . The threshold expression of  $F^2 > \sigma(F^2)$  is used only for calculating  $R$ -factors(gt) *etc.* and is not relevant to the choice of reflections for refinement.  $R$ -factors based on  $F^2$  are statistically about twice as large as those based on  $F$ , and  $R$ -factors based on ALL data will be even larger.

*Fractional atomic coordinates and isotropic or equivalent isotropic displacement parameters ( $\text{\AA}^2$ )*

	<i>x</i>	<i>y</i>	<i>z</i>	$U_{\text{iso}}^*/U_{\text{eq}}$
O1	-0.07270 (13)	0.0953 (3)	0.95352 (10)	0.0550 (5)
O2	0.05579 (11)	1.2801 (3)	0.67387 (9)	0.0461 (4)
O3	0.37031 (11)	1.3774 (3)	0.73708 (8)	0.0411 (4)
H3	0.4359	1.3777	0.7357	0.062*
O4	0.41377 (12)	2.0606 (3)	0.58664 (8)	0.0438 (4)
H4	0.4607	2.1038	0.6120	0.066*
N1	0.11530 (13)	0.9630 (3)	0.76750 (9)	0.0358 (4)
N2	0.18526 (13)	1.1298 (3)	0.73763 (9)	0.0354 (4)
C1	0.09837 (17)	0.6230 (4)	0.84516 (11)	0.0361 (4)
C2	-0.01216 (19)	0.5952 (5)	0.83938 (12)	0.0461 (6)
H2	-0.0499	0.6974	0.8105	0.055*
C3	-0.06553 (18)	0.4174 (5)	0.87614 (13)	0.0490 (6)
H3A	-0.1392	0.3994	0.8717	0.059*
C4	-0.01114 (18)	0.2637 (4)	0.91993 (11)	0.0394 (5)
C5	0.09840 (18)	0.2886 (4)	0.92608 (12)	0.0421 (5)

H5	0.1360	0.1855	0.9548	0.051*
C6	0.15162 (17)	0.4694 (4)	0.88882 (12)	0.0424 (5)
H6	0.2253	0.4876	0.8934	0.051*
C7	0.15821 (17)	0.8097 (4)	0.80745 (11)	0.0377 (5)
H7	0.2320	0.8173	0.8129	0.045*
C8	0.15001 (14)	1.2894 (4)	0.69171 (10)	0.0317 (4)
C9	0.22691 (14)	1.4776 (4)	0.66456 (10)	0.0304 (4)
C10	0.33078 (14)	1.5226 (4)	0.68779 (10)	0.0306 (4)
C11	0.39332 (15)	1.7176 (4)	0.66248 (10)	0.0324 (4)
H11	0.4610	1.7489	0.6793	0.039*
C12	0.35562 (16)	1.8657 (4)	0.61231 (10)	0.0335 (4)
C13	0.25493 (16)	1.8182 (4)	0.58614 (11)	0.0394 (5)
H13	0.2303	1.9129	0.5512	0.047*
C14	0.19282 (16)	1.6282 (4)	0.61303 (10)	0.0373 (5)
H14	0.1250	1.5987	0.5961	0.045*
C15	-0.0203 (2)	-0.0748 (5)	0.99722 (14)	0.0540 (6)
H15A	0.0135	0.0235	1.0306	0.081*
H15B	0.0328	-0.1729	0.9746	0.081*
H15C	-0.0720	-0.1893	1.0159	0.081*
H2A	0.2547 (11)	1.133 (6)	0.7492 (17)	0.080*

*Atomic displacement parameters (Å<sup>2</sup>)*

	$U^{11}$	$U^{22}$	$U^{33}$	$U^{12}$	$U^{13}$	$U^{23}$
O1	0.0502 (9)	0.0531 (9)	0.0618 (11)	-0.0010 (8)	0.0024 (9)	0.0263 (8)
O2	0.0247 (7)	0.0480 (8)	0.0657 (11)	-0.0043 (6)	-0.0063 (7)	0.0119 (8)
O3	0.0221 (6)	0.0521 (9)	0.0490 (9)	-0.0013 (6)	-0.0039 (6)	0.0161 (8)
O4	0.0398 (8)	0.0458 (9)	0.0458 (8)	-0.0114 (7)	-0.0038 (7)	0.0110 (7)
N1	0.0311 (8)	0.0368 (9)	0.0395 (9)	-0.0081 (7)	0.0034 (7)	0.0004 (8)
N2	0.0258 (8)	0.0401 (9)	0.0404 (9)	-0.0046 (7)	0.0007 (8)	0.0049 (7)
C1	0.0364 (10)	0.0354 (10)	0.0364 (10)	-0.0019 (8)	-0.0005 (8)	-0.0012 (8)
C2	0.0383 (11)	0.0517 (13)	0.0481 (13)	-0.0061 (10)	-0.0100 (10)	0.0175 (11)
C3	0.0346 (10)	0.0557 (13)	0.0567 (14)	-0.0070 (10)	-0.0084 (11)	0.0186 (11)
C4	0.0422 (12)	0.0360 (10)	0.0399 (11)	-0.0009 (9)	0.0012 (9)	0.0062 (9)
C5	0.0439 (12)	0.0400 (11)	0.0425 (11)	0.0066 (9)	-0.0042 (9)	0.0068 (10)
C6	0.0347 (10)	0.0451 (12)	0.0476 (13)	0.0029 (9)	-0.0033 (10)	0.0006 (10)
C7	0.0311 (10)	0.0418 (11)	0.0404 (11)	-0.0033 (9)	-0.0001 (9)	-0.0023 (9)
C8	0.0239 (9)	0.0318 (9)	0.0394 (10)	0.0013 (7)	0.0020 (8)	-0.0037 (8)
C9	0.0233 (8)	0.0324 (9)	0.0356 (10)	0.0009 (7)	0.0000 (8)	-0.0020 (8)
C10	0.0240 (8)	0.0333 (9)	0.0346 (10)	0.0032 (7)	0.0006 (8)	0.0007 (8)
C11	0.0227 (8)	0.0371 (10)	0.0376 (10)	-0.0001 (7)	-0.0016 (8)	-0.0006 (8)
C12	0.0296 (9)	0.0346 (10)	0.0363 (10)	-0.0020 (8)	0.0024 (8)	-0.0004 (8)
C13	0.0333 (10)	0.0460 (11)	0.0389 (11)	-0.0003 (9)	-0.0065 (9)	0.0089 (10)
C14	0.0262 (9)	0.0437 (11)	0.0419 (11)	-0.0031 (8)	-0.0081 (8)	0.0019 (9)
C15	0.0663 (16)	0.0453 (12)	0.0504 (14)	0.0093 (13)	0.0052 (13)	0.0159 (11)

*Geometric parameters (Å, °)*

O1—C4	1.359 (3)	C4—C5	1.381 (3)
O1—C15	1.427 (3)	C5—C6	1.388 (3)
O2—C8	1.235 (2)	C5—H5	0.9300
O3—C10	1.366 (2)	C6—H6	0.9300
O3—H3	0.8200	C7—H7	0.9300
O4—C12	1.356 (2)	C8—C9	1.483 (3)
O4—H4	0.8200	C9—C14	1.394 (3)
N1—C7	1.270 (3)	C9—C10	1.405 (3)
N1—N2	1.379 (2)	C10—C11	1.384 (3)
N2—C8	1.340 (3)	C11—C12	1.380 (3)
N2—H2A	0.901 (10)	C11—H11	0.9300
C1—C6	1.381 (3)	C12—C13	1.393 (3)
C1—C2	1.394 (3)	C13—C14	1.375 (3)
C1—C7	1.455 (3)	C13—H13	0.9300
C2—C3	1.373 (3)	C14—H14	0.9300
C2—H2	0.9300	C15—H15A	0.9600
C3—C4	1.390 (3)	C15—H15B	0.9600
C3—H3A	0.9300	C15—H15C	0.9600
C4—O1—C15	117.86 (19)	O2—C8—N2	120.23 (18)
C10—O3—H3	109.5	O2—C8—C9	121.91 (18)
C12—O4—H4	109.5	N2—C8—C9	117.85 (16)
C7—N1—N2	114.96 (16)	C14—C9—C10	117.00 (17)
C8—N2—N1	120.15 (16)	C14—C9—C8	117.74 (17)
C8—N2—H2A	120 (2)	C10—C9—C8	125.23 (17)
N1—N2—H2A	120 (2)	O3—C10—C11	119.10 (16)
C6—C1—C2	118.3 (2)	O3—C10—C9	120.06 (16)
C6—C1—C7	119.57 (19)	C11—C10—C9	120.82 (17)
C2—C1—C7	122.1 (2)	C12—C11—C10	120.26 (17)
C3—C2—C1	120.2 (2)	C12—C11—H11	119.9
C3—C2—H2	119.9	C10—C11—H11	119.9
C1—C2—H2	119.9	O4—C12—C11	122.14 (18)
C2—C3—C4	121.0 (2)	O4—C12—C13	117.50 (18)
C2—C3—H3A	119.5	C11—C12—C13	120.36 (18)
C4—C3—H3A	119.5	C14—C13—C12	118.52 (19)
O1—C4—C5	125.0 (2)	C14—C13—H13	120.7
O1—C4—C3	115.5 (2)	C12—C13—H13	120.7
C5—C4—C3	119.5 (2)	C13—C14—C9	122.94 (18)
C4—C5—C6	119.1 (2)	C13—C14—H14	118.5
C4—C5—H5	120.4	C9—C14—H14	118.5
C6—C5—H5	120.4	O1—C15—H15A	109.5
C1—C6—C5	121.9 (2)	O1—C15—H15B	109.5
C1—C6—H6	119.0	H15A—C15—H15B	109.5
C5—C6—H6	119.0	O1—C15—H15C	109.5
N1—C7—C1	123.69 (19)	H15A—C15—H15C	109.5
N1—C7—H7	118.2	H15B—C15—H15C	109.5

C1—C7—H7

118.2

*Hydrogen-bond geometry (Å, °)*

<i>D</i> —H··· <i>A</i>	<i>D</i> —H	H··· <i>A</i>	<i>D</i> ··· <i>A</i>	<i>D</i> —H··· <i>A</i>
N2—H2A···O3	0.90 (1)	1.94 (2)	2.646 (2)	134 (3)
O4—H4···O2 <sup>i</sup>	0.82	1.85	2.671 (2)	174
O3—H3···N1 <sup>ii</sup>	0.82	2.48	3.234 (2)	154
O3—H3···O2 <sup>ii</sup>	0.82	2.14	2.788 (2)	136

Symmetry codes: (i)  $x+1/2, -y+7/2, z$ ; (ii)  $x+1/2, -y+5/2, z$ .