

Meeting abstract

Open Access

2105 Graphite/metal core-shell nanocrystals as MRI contrast agents to detect vascular inflammation

Hisanori Kosuge*¹, Masahiro Terashima¹, Sarah Sherlock², Jin Hyung Lee³, Hongjie Dai² and Michael V McConnell¹

Address: ¹Cardiovascular Medicine, Stanford University School of Medicine, Stanford, CA, USA, ²Department of Chemistry, Stanford University, Stanford, CA, USA and ³Department of Electrical Engineering, Stanford University, Stanford, CA, USA

* Corresponding author

from 11th Annual SCMR Scientific Sessions
Los Angeles, CA, USA. 1–3 February 2008

Published: 22 October 2008

Journal of Cardiovascular Magnetic Resonance 2008, 10(Suppl 1):A374 doi:10.1186/1532-429X-10-S1-A374

This abstract is available from: <http://jcmr-online.com/content/10/S1/A374>

© 2008 Kosuge et al; licensee BioMed Central Ltd.

Introduction

Noninvasive imaging of atherosclerosis may benefit from the characterization of plaque biological activity. Macrophages are ideal targets as they have a critical role in progression of atherosclerotic lesions. Novel graphite/metal core-shell nanocrystals (CN) show promising properties as MRI contrast agents for cellular imaging [1].

Purpose

To evaluate 1) CN uptake by macrophages *in vitro*, and 2) CN uptake in mouse atherosclerotic lesions *in vivo*.

Methods

Graphite/Metal core-shell nanocrystals

CN are composed of an Fe/Co core with a carbon graphite shell and phospholipid-polyethylene glycol molecules, with Cy5.5 attached for *in vivo* experiments.

In Vitro Uptake/Imaging

Mouse macrophage cells (RAW264) were incubated with ferumoxytol (Feridex), ferumoxtran-10 (Combidex), or graphite/metal core-shell nanocrystals (CN) for 24 hours, each at a concentration of 100 µgFe/ml. After incubation, 5×10^6 cells from each group were scanned by MRI at 1.5 T (GE Healthcare, Milwaukee, WI) to examine cellular uptake of contrast using a standard gradient echo sequence (TR/TE = 100/10, FA = 30, Matrix = 256×256 , slice thickness = 2.0, FOV = 12 cm).

In Vivo Uptake/Imaging

FVB mice (N = 5) underwent a carotid-ligation procedure previously shown to produce a macrophage-rich atherosclerotic lesion. Briefly, they were given high fat diet for 4 weeks and then had diabetes induced by 5 daily intraperitoneal injections of streptozotocin. After 2 weeks of diabetes, carotid ligation of the left carotid artery was performed. Two weeks post carotid ligation, mice were given CN-Cy5.5 (8 nmol of Cy5.5) via tail vein and scanned serially over 12–48 hours using the Maestro *in vivo* fluorescent imaging system (CRI, Woburn, MA). After final *in vivo* imaging, carotid arteries were exposed and both *in situ* and *ex vivo* imaging were performed.

Results

In vitro CN uptake by macrophages was clearly seen by T2*-weighted MRI. The area of signal loss was significantly greater ($p < 0.001$, Figure 1) for CN than ferumoxtran-10 (Combidex; common *in vivo* macrophage imaging agent). However, the uptake of CN *in vitro* was less than ferumoxytol (Feridex; common *in vitro* stem cell labeling agent).

In vivo fluorescence imaging showed limited carotid signal, but both *in situ* and *ex vivo* fluorescence imaging at 12–48 hours showed high signal from the ligated left carotid, confirming *in vivo* CN uptake in the atherosclerotic lesions (Figure 2). No evidence of CN accumulation was seen in the non-ligated right carotid arteries.

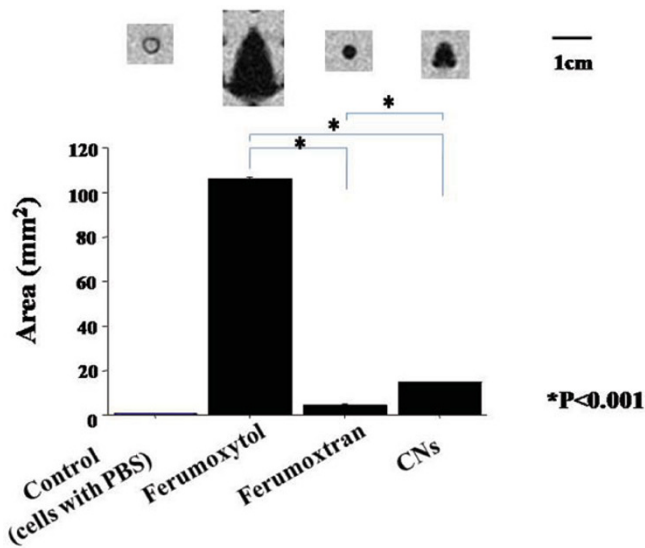


Figure 1
Contrast uptake by macrophages (T2 weighted images).

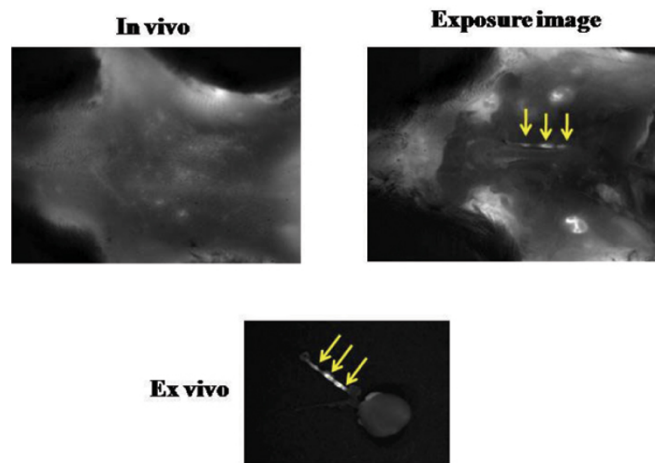


Figure 2
Fluorescence imaging in mice.

Conclusion

The novel CN contrast agent was effectively taken up by macrophages *in vitro* and by macrophage-rich atherosclerotic lesions *in vivo*. Further development of *in vivo* MRI and fluorescence imaging of graphite/metal core-shell nanocrystals may allow direct noninvasive detection of vascular inflammation.

References

1. Seo WS, et al.: *Nature Materials* 2006, **5**:971-976.

Publish with **BioMed Central** and every scientist can read your work free of charge

"BioMed Central will be the most significant development for disseminating the results of biomedical research in our lifetime."

Sir Paul Nurse, Cancer Research UK

Your research papers will be:

- available free of charge to the entire biomedical community
- peer reviewed and published immediately upon acceptance
- cited in PubMed and archived on PubMed Central
- yours — you keep the copyright

Submit your manuscript here:
http://www.biomedcentral.com/info/publishing_adv.asp

