

## 3-Phenylisoquinolin-1(2H)-one

P. Manivel,<sup>a</sup> Venkatesha R. Hathwar,<sup>b</sup> R. Subashini,<sup>a</sup>  
P. Nithya<sup>a</sup> and F. Nawaz Khan<sup>a\*</sup>

<sup>a</sup>Chemistry Division, School of Science and Humanities, VIT University, Vellore 632 014, Tamil Nadu, India, and <sup>b</sup>Solid State and Structural Chemistry Unit, Indian Institute of Science, Bangalore 560 012, Karnataka, India

Correspondence e-mail: nawaz\_f@yahoo.co.in

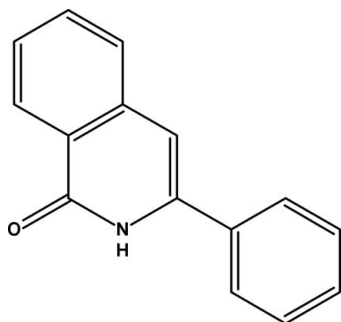
Received 15 December 2008; accepted 5 January 2009

Key indicators: single-crystal X-ray study;  $T = 290$  K; mean  $\sigma(\text{C}-\text{C}) = 0.002$  Å;  $R$  factor = 0.039;  $wR$  factor = 0.106; data-to-parameter ratio = 12.7.

The title compound,  $\text{C}_{15}\text{H}_{11}\text{NO}$ , consists of a planar isoquinolinone group to which a phenyl ring is attached in a twisted fashion [dihedral angle =  $39.44(4)^\circ$ ]. The crystal packing is dominated by intermolecular  $\text{N}-\text{H}\cdots\text{O}$  and  $\text{C}-\text{H}\cdots\text{O}$  hydrogen bonds which define centrosymmetric dimeric entities.

### Related literature

For general background and related crystal structures, see: Cho *et al.* (2002) and references therein. For new chemotherapeutic agents for the treatment of cancer derived from natural compounds, see: Mackay *et al.* (1997). For bond-length data, see: Allen *et al.* (1987). For hydrogen-bond motifs, see: Bernstein *et al.* (1995).



### Experimental

#### Crystal data

$\text{C}_{15}\text{H}_{11}\text{NO}$   
 $M_r = 221.25$   
Triclinic,  $P\bar{1}$   
 $a = 3.8692(5)$  Å

$b = 12.0171(16)$  Å  
 $c = 12.3209(16)$  Å  
 $\alpha = 106.652(2)^\circ$   
 $\beta = 94.137(2)^\circ$

$\gamma = 90.579(2)^\circ$   
 $V = 547.14(12)$  Å<sup>3</sup>  
 $Z = 2$   
Mo  $K\alpha$  radiation

$\mu = 0.09$  mm<sup>-1</sup>  
 $T = 290(2)$  K  
 $0.21 \times 0.15 \times 0.08$  mm

#### Data collection

Bruker SMART CCD area-detector diffractometer  
Absorption correction: multi-scan (*SADABS*; Sheldrick, 1996)  
 $T_{\min} = 0.938$ ,  $T_{\max} = 0.993$   
5473 measured reflections  
2001 independent reflections  
1545 reflections with  $I > 2\sigma(I)$   
 $R_{\text{int}} = 0.016$

#### Refinement

$R[F^2 > 2\sigma(F^2)] = 0.039$   
 $wR(F^2) = 0.106$   
 $S = 1.06$   
2001 reflections  
158 parameters

H atoms treated by a mixture of independent and constrained refinement  
 $\Delta\rho_{\max} = 0.15$  e Å<sup>-3</sup>  
 $\Delta\rho_{\min} = -0.15$  e Å<sup>-3</sup>

**Table 1**

Hydrogen-bond geometry (Å, °).

| $D-H\cdots A$                             | $D-H$      | $H\cdots A$ | $D\cdots A$ | $D-H\cdots A$ |
|---|------------|-------------|-------------|---------------|
| $\text{N1}-\text{H1N}\cdots\text{O1}^i$   | 0.896 (16) | 1.945 (16)  | 2.8373 (15) | 174.0 (15)    |
| $\text{C11}-\text{H11}\cdots\text{O1}^ii$ | 0.93       | 2.59        | 3.4449 (19) | 152           |

Symmetry codes: (i)  $-x + 1, -y + 1, -z$ ; (ii)  $-x, -y + 1, -z$ .

Data collection: *SMART* (Bruker, 2004); cell refinement: *SAINT* (Bruker, 2004); data reduction: *SAINT*; program(s) used to solve structure: *SHELXS97* (Sheldrick, 2008); program(s) used to refine structure: *SHELXL97* (Sheldrick, 2008); molecular graphics: *ORTEP-3* (Farrugia, 1999) and *CAMERON* (Watkin *et al.*, 1993); software used to prepare material for publication: *PLATON* (Spek, 2003).

We thank the Department of Science and Technology, India, for use of the CCD facility set up under the IRHPA-DST program at IISc. We thank Prof T. N. Guru Row, IISc, Bangalore, for useful crystallographic discussions. FNK thanks the DST for Fast Track Proposal funding.

Supplementary data and figures for this paper are available from the IUCr electronic archives (Reference: BG2233).

### References

- Allen, F. H., Kennard, O., Watson, D. G., Brammer, L., Orpen, A. G. & Taylor, R. (1987). *J. Chem. Soc. Perkin Trans. 2*, pp. S1–19.
- Bernstein, J., Davis, R. E., Shimon, L. & Chang, N.-L. (1995). *Angew. Chem. Int. Ed. Engl.* **34**, 1555–1573.
- Bruker (2004). *SMART* and *SAINT*. Bruker AXS Inc., Madison, Wisconsin, USA.
- Cho, W., Kim, E., Park, I. Y., Jeong, E. Y., Kim, T. S., Le, T. N., Kim, D. & Leed, E. (2002). *Bioorg. Med. Chem.* **10**, 2953–2961.
- Farrugia, L. J. (1999). *J. Appl. Cryst.* **32**, 837–838.
- Mackay, S. P., Meth-Cohn, O. & Waich, R. D. (1997). In *Advances in Heterocyclic Chemistry*, edited by A. R. Katritzky. New York: Academic Press.
- Sheldrick, G. M. (1996). *SADABS*. University of Göttingen, Germany.
- Sheldrick, G. M. (2008). *Acta Cryst. A* **64**, 112–122.
- Spek, A. L. (2003). *J. Appl. Cryst.* **36**, 7–13.
- Watkin, D. J., Pearce, L. & Prout, C. K. (1993). *CAMERON*. Chemical Crystallography Laboratory, University of Oxford, England.

## supporting information

*Acta Cryst.* (2009). E65, o261 [doi:10.1107/S1600536809000245]

### 3-Phenylisoquinolin-1(2H)-one

P. Manivel, Venkatesha R. Hathwar, R. Subashini, P. Nithya and F. Nawaz Khan

#### S1. Comment

New chemotherapeutic agents for a treatment of cancer from natural compounds have been developed over the last decade (Mackay *et al.*, 1997). Most of the 3-arylisoquinoline derivatives exhibited potent cytotoxicities against five different human tumor cell lines. These potent antitumor activity is studied by molecular modeling to correlate structure-activity relationships (Cho *et al.*, 2002 and references therein).

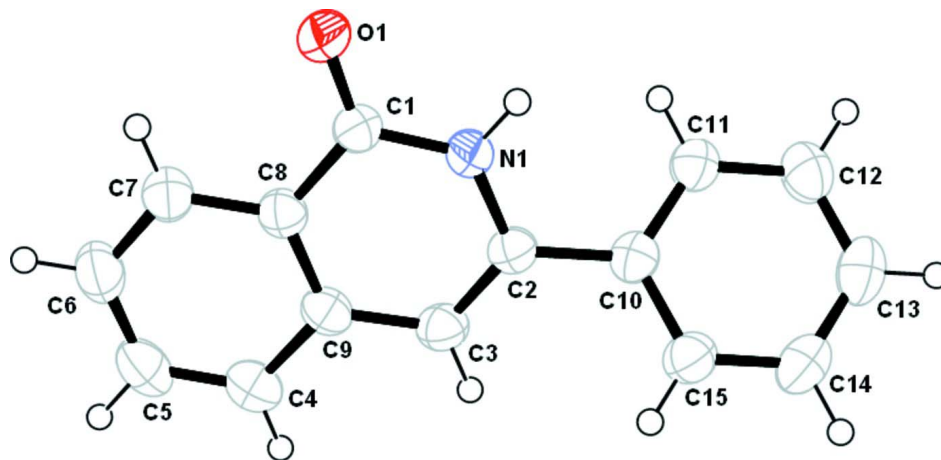
In the title compound  $C_{15}H_{11}NO$  (Fig. 1) the phenyl ring attached to the isoquinolinone moiety at C2 is twisted, forming a dihedral angle of  $39.44(4)^\circ$ . Bond lengths and angles are within normal ranges (Allen *et al.*, 1987). The  $C_{15}H_{11}NO$  monomers are linked via N—H $\cdots$ O and C—H $\cdots$ O hydrogen bonds to form dimers across the inversion center located at  $(1/2, 1/2, 0)$  (Fig. 2) and giving rise to two  $R^1_2(7)$  and one  $R^2_2(14)$  graph-set motifs respectively (Bernstein *et al.*, 1995).

#### S2. Experimental

A solution of 3-phenylisocoumarin in THF was treated with ammonia and stirred overnight under reflux conditions; the solvent was concentrated to give the solid which was further purified by column chromatography. The material was recrystallized from Dichloromethane.

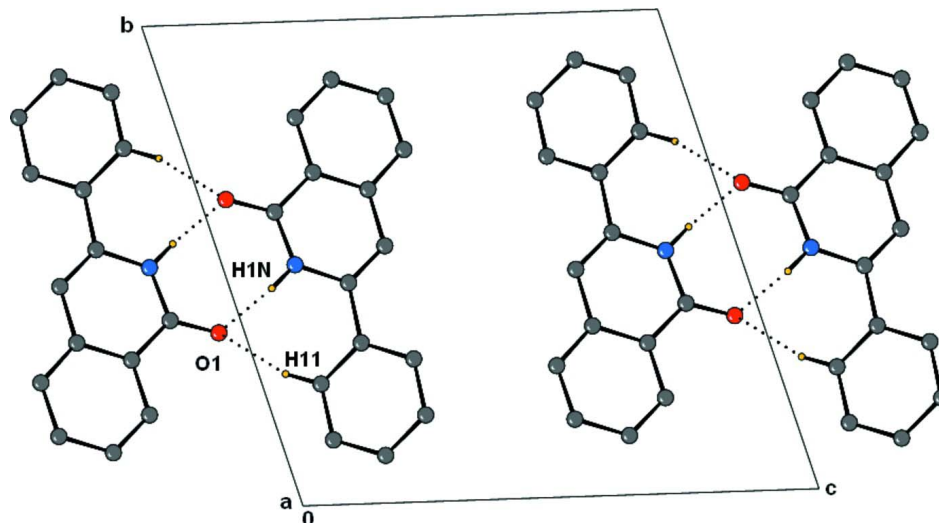
#### S3. Refinement

All the H atoms in (I) were positioned geometrically and refined using a riding model with C—H = 0.93 Å and  $U_{iso}(H) = 1.2U_{eq}(C)$  for aromatic H atoms. The H atom of N was located from difference fourier map and refined isotropically resulting in N—H bond length of 0.895 (17) Å.



**Figure 1**

ORTEP diagram of molecule (I) with 50% probability displacement ellipsoids.

**Figure 2**

The crystal packing diagram of (I). The dotted lines indicate intermolecular interactions. H atoms not involved in H-bonding have been omitted for clarity.

### 3-Phenylisoquinolin-1(2H)-one

#### Crystal data

$C_{15}H_{11}NO$   
 $M_r = 221.25$   
 Triclinic,  $P\bar{1}$   
 Hall symbol:  $-P\ 1$   
 $a = 3.8692\ (5)\ \text{\AA}$   
 $b = 12.0171\ (16)\ \text{\AA}$   
 $c = 12.3209\ (16)\ \text{\AA}$   
 $\alpha = 106.652\ (2)^\circ$   
 $\beta = 94.137\ (2)^\circ$   
 $\gamma = 90.579\ (2)^\circ$   
 $V = 547.14\ (12)\ \text{\AA}^3$

$Z = 2$   
 $F(000) = 232$   
 $D_x = 1.343\ \text{Mg m}^{-3}$   
 Mo  $K\alpha$  radiation,  $\lambda = 0.71073\ \text{\AA}$   
 Cell parameters from 956 reflections  
 $\theta = 2.0\text{--}24.7^\circ$   
 $\mu = 0.09\ \text{mm}^{-1}$   
 $T = 290\ \text{K}$   
 Plate, brown  
 $0.21 \times 0.15 \times 0.08\ \text{mm}$

#### Data collection

Bruker SMART CCD area-detector  
 diffractometer  
 Radiation source: fine-focus sealed tube  
 Graphite monochromator  
 $\varphi$  and  $\omega$  scans  
 Absorption correction: multi-scan  
 (SADABS; Sheldrick, 1996)  
 $T_{\min} = 0.938$ ,  $T_{\max} = 0.993$

5473 measured reflections  
 2001 independent reflections  
 1545 reflections with  $I > 2\sigma(I)$   
 $R_{\text{int}} = 0.016$   
 $\theta_{\max} = 25.3^\circ$ ,  $\theta_{\min} = 1.7^\circ$   
 $h = -4 \rightarrow 4$   
 $k = -14 \rightarrow 14$   
 $l = -14 \rightarrow 14$

#### Refinement

Refinement on  $F^2$   
 Least-squares matrix: full  
 $R[F^2 > 2\sigma(F^2)] = 0.039$   
 $wR(F^2) = 0.106$   
 $S = 1.06$   
 2001 reflections  
 158 parameters

0 restraints  
 Primary atom site location: structure-invariant  
 direct methods  
 Secondary atom site location: difference Fourier  
 map  
 Hydrogen site location: inferred from  
 neighbouring sites

H atoms treated by a mixture of independent  
and constrained refinement  
 $w = 1/[\sigma^2(F_o^2) + (0.0596P)^2 + 0.0314P]$   
where  $P = (F_o^2 + 2F_c^2)/3$

$$(\Delta/\sigma)_{\max} < 0.001$$

$$\Delta\rho_{\max} = 0.15 \text{ e } \text{\AA}^{-3}$$

$$\Delta\rho_{\min} = -0.15 \text{ e } \text{\AA}^{-3}$$

#### Special details

**Geometry.** All e.s.d.'s (except the e.s.d. in the dihedral angle between two l.s. planes) are estimated using the full covariance matrix. The cell e.s.d.'s are taken into account individually in the estimation of e.s.d.'s in distances, angles and torsion angles; correlations between e.s.d.'s in cell parameters are only used when they are defined by crystal symmetry. An approximate (isotropic) treatment of cell e.s.d.'s is used for estimating e.s.d.'s involving l.s. planes.

**Refinement.** Refinement of  $F^2$  against ALL reflections. The weighted  $R$ -factor  $wR$  and goodness of fit  $S$  are based on  $F^2$ , conventional  $R$ -factors  $R$  are based on  $F$ , with  $F$  set to zero for negative  $F^2$ . The threshold expression of  $F^2 > \sigma(F^2)$  is used only for calculating  $R$ -factors(gt) *etc.* and is not relevant to the choice of reflections for refinement.  $R$ -factors based on  $F^2$  are statistically about twice as large as those based on  $F$ , and  $R$ -factors based on ALL data will be even larger.

#### Fractional atomic coordinates and isotropic or equivalent isotropic displacement parameters ( $\text{\AA}^2$ )

|     | <i>x</i>    | <i>y</i>     | <i>z</i>     | $U_{\text{iso}}^*/U_{\text{eq}}$ |
|-----|-------------|--------------|--------------|----------------------------------|
| N1  | 0.3290 (3)  | 0.49798 (9)  | 0.14029 (9)  | 0.0377 (3)                       |
| H1N | 0.425 (4)   | 0.4508 (14)  | 0.0808 (14)  | 0.053 (4)*                       |
| O1  | 0.3406 (3)  | 0.63724 (8)  | 0.04974 (8)  | 0.0494 (3)                       |
| C1  | 0.2740 (3)  | 0.60824 (11) | 0.13505 (11) | 0.0370 (3)                       |
| C2  | 0.2647 (3)  | 0.45724 (11) | 0.23136 (11) | 0.0355 (3)                       |
| C3  | 0.1426 (4)  | 0.53085 (11) | 0.32449 (11) | 0.0404 (3)                       |
| H3  | 0.1027      | 0.5045       | 0.3866       | 0.048*                           |
| C4  | -0.0576 (4) | 0.72807 (13) | 0.42310 (12) | 0.0475 (4)                       |
| H4  | -0.1023     | 0.7044       | 0.4864       | 0.057*                           |
| C5  | -0.1204 (4) | 0.83970 (13) | 0.42281 (13) | 0.0539 (4)                       |
| H5  | -0.2067     | 0.8912       | 0.4859       | 0.065*                           |
| C6  | -0.0564 (4) | 0.87701 (13) | 0.32897 (14) | 0.0540 (4)                       |
| H6  | -0.0988     | 0.9533       | 0.3298       | 0.065*                           |
| C7  | 0.0688 (4)  | 0.80168 (12) | 0.23554 (12) | 0.0461 (4)                       |
| H7  | 0.1092      | 0.8266       | 0.1726       | 0.055*                           |
| C8  | 0.1361 (3)  | 0.68737 (11) | 0.23437 (11) | 0.0372 (3)                       |
| C9  | 0.0743 (3)  | 0.64835 (12) | 0.32866 (11) | 0.0377 (3)                       |
| C10 | 0.3263 (3)  | 0.33257 (11) | 0.21691 (11) | 0.0371 (3)                       |
| C11 | 0.2399 (4)  | 0.25028 (12) | 0.11318 (12) | 0.0434 (4)                       |
| H11 | 0.1454      | 0.2735       | 0.0519       | 0.052*                           |
| C12 | 0.2941 (4)  | 0.13396 (13) | 0.10093 (14) | 0.0526 (4)                       |
| H12 | 0.2356      | 0.0792       | 0.0313       | 0.063*                           |
| C13 | 0.4338 (4)  | 0.09853 (13) | 0.19090 (15) | 0.0558 (4)                       |
| H13 | 0.4695      | 0.0201       | 0.1821       | 0.067*                           |
| C14 | 0.5206 (4)  | 0.17909 (13) | 0.29387 (14) | 0.0527 (4)                       |
| H14 | 0.6149      | 0.1551       | 0.3547       | 0.063*                           |
| C15 | 0.4681 (4)  | 0.29547 (12) | 0.30712 (12) | 0.0442 (4)                       |
| H15 | 0.5279      | 0.3496       | 0.3770       | 0.053*                           |

Atomic displacement parameters ( $\text{\AA}^2$ )

|     | $U^{11}$    | $U^{22}$   | $U^{33}$    | $U^{12}$    | $U^{13}$    | $U^{23}$    |
|-----|-------------|------------|-------------|-------------|-------------|-------------|
| N1  | 0.0459 (7)  | 0.0342 (6) | 0.0338 (6)  | 0.0047 (5)  | 0.0075 (5)  | 0.0098 (5)  |
| O1  | 0.0698 (7)  | 0.0432 (6) | 0.0407 (6)  | 0.0101 (5)  | 0.0135 (5)  | 0.0181 (5)  |
| C1  | 0.0399 (8)  | 0.0366 (7) | 0.0351 (7)  | 0.0009 (6)  | 0.0006 (6)  | 0.0118 (6)  |
| C2  | 0.0352 (7)  | 0.0375 (7) | 0.0346 (7)  | -0.0010 (5) | 0.0016 (5)  | 0.0120 (6)  |
| C3  | 0.0441 (8)  | 0.0436 (8) | 0.0356 (7)  | -0.0006 (6) | 0.0054 (6)  | 0.0144 (6)  |
| C4  | 0.0477 (9)  | 0.0507 (9) | 0.0400 (8)  | 0.0004 (7)  | 0.0065 (6)  | 0.0059 (7)  |
| C5  | 0.0530 (9)  | 0.0483 (9) | 0.0493 (9)  | 0.0076 (7)  | 0.0040 (7)  | -0.0036 (7) |
| C6  | 0.0593 (10) | 0.0376 (8) | 0.0587 (10) | 0.0082 (7)  | -0.0026 (8) | 0.0053 (7)  |
| C7  | 0.0518 (9)  | 0.0393 (8) | 0.0458 (8)  | 0.0026 (6)  | -0.0010 (7) | 0.0111 (6)  |
| C8  | 0.0352 (7)  | 0.0367 (7) | 0.0375 (7)  | 0.0002 (6)  | -0.0020 (5) | 0.0082 (6)  |
| C9  | 0.0341 (7)  | 0.0403 (8) | 0.0356 (7)  | -0.0015 (6) | 0.0015 (5)  | 0.0062 (6)  |
| C10 | 0.0345 (7)  | 0.0377 (7) | 0.0417 (8)  | 0.0003 (6)  | 0.0068 (6)  | 0.0148 (6)  |
| C11 | 0.0493 (9)  | 0.0375 (8) | 0.0444 (8)  | 0.0002 (6)  | 0.0017 (6)  | 0.0137 (6)  |
| C12 | 0.0591 (10) | 0.0383 (8) | 0.0568 (10) | -0.0021 (7) | 0.0041 (7)  | 0.0082 (7)  |
| C13 | 0.0591 (10) | 0.0386 (8) | 0.0752 (11) | 0.0049 (7)  | 0.0100 (8)  | 0.0240 (8)  |
| C14 | 0.0554 (10) | 0.0525 (9) | 0.0590 (10) | 0.0073 (7)  | 0.0046 (7)  | 0.0301 (8)  |
| C15 | 0.0476 (8)  | 0.0455 (8) | 0.0421 (8)  | 0.0018 (6)  | 0.0028 (6)  | 0.0170 (6)  |

Geometric parameters ( $\text{\AA}$ ,  $^\circ$ )

|           |             |             |             |
|-----------|-------------|-------------|-------------|
| N1—C1     | 1.3631 (17) | C6—H6       | 0.9300      |
| N1—C2     | 1.3831 (16) | C7—C8       | 1.3970 (19) |
| N1—H1N    | 0.895 (17)  | C7—H7       | 0.9300      |
| O1—C1     | 1.2408 (15) | C8—C9       | 1.4060 (18) |
| C1—C8     | 1.4574 (19) | C10—C11     | 1.3894 (19) |
| C2—C3     | 1.3518 (18) | C10—C15     | 1.3914 (19) |
| C2—C10    | 1.4811 (18) | C11—C12     | 1.382 (2)   |
| C3—C9     | 1.4263 (19) | C11—H11     | 0.9300      |
| C3—H3     | 0.9300      | C12—C13     | 1.375 (2)   |
| C4—C5     | 1.367 (2)   | C12—H12     | 0.9300      |
| C4—C9     | 1.410 (2)   | C13—C14     | 1.374 (2)   |
| C4—H4     | 0.9300      | C13—H13     | 0.9300      |
| C5—C6     | 1.391 (2)   | C14—C15     | 1.380 (2)   |
| C5—H5     | 0.9300      | C14—H14     | 0.9300      |
| C6—C7     | 1.368 (2)   | C15—H15     | 0.9300      |
| C1—N1—C2  | 125.14 (12) | C7—C8—C9    | 120.48 (13) |
| C1—N1—H1N | 115.8 (10)  | C7—C8—C1    | 119.76 (12) |
| C2—N1—H1N | 119.0 (10)  | C9—C8—C1    | 119.76 (12) |
| O1—C1—N1  | 120.67 (12) | C8—C9—C4    | 117.81 (13) |
| O1—C1—C8  | 123.27 (12) | C8—C9—C3    | 119.16 (12) |
| N1—C1—C8  | 116.06 (11) | C4—C9—C3    | 123.03 (13) |
| C3—C2—N1  | 119.03 (12) | C11—C10—C15 | 118.75 (13) |
| C3—C2—C10 | 124.69 (12) | C11—C10—C2  | 120.53 (12) |
| N1—C2—C10 | 116.25 (11) | C15—C10—C2  | 120.72 (12) |

|              |              |                 |              |
|--------------|--------------|-----------------|--------------|
| C2—C3—C9     | 120.84 (12)  | C12—C11—C10     | 120.12 (13)  |
| C2—C3—H3     | 119.6        | C12—C11—H11     | 119.9        |
| C9—C3—H3     | 119.6        | C10—C11—H11     | 119.9        |
| C5—C4—C9     | 120.84 (14)  | C13—C12—C11     | 120.49 (15)  |
| C5—C4—H4     | 119.6        | C13—C12—H12     | 119.8        |
| C9—C4—H4     | 119.6        | C11—C12—H12     | 119.8        |
| C4—C5—C6     | 120.60 (14)  | C14—C13—C12     | 119.93 (14)  |
| C4—C5—H5     | 119.7        | C14—C13—H13     | 120.0        |
| C6—C5—H5     | 119.7        | C12—C13—H13     | 120.0        |
| C7—C6—C5     | 120.09 (14)  | C13—C14—C15     | 120.12 (14)  |
| C7—C6—H6     | 120.0        | C13—C14—H14     | 119.9        |
| C5—C6—H6     | 120.0        | C15—C14—H14     | 119.9        |
| C6—C7—C8     | 120.18 (14)  | C14—C15—C10     | 120.59 (14)  |
| C6—C7—H7     | 119.9        | C14—C15—H15     | 119.7        |
| C8—C7—H7     | 119.9        | C10—C15—H15     | 119.7        |
|              |              |                 |              |
| C2—N1—C1—O1  | 179.73 (12)  | C1—C8—C9—C3     | -1.05 (19)   |
| C2—N1—C1—C8  | -0.11 (19)   | C5—C4—C9—C8     | -0.4 (2)     |
| C1—N1—C2—C3  | -1.0 (2)     | C5—C4—C9—C3     | -179.69 (13) |
| C1—N1—C2—C10 | 177.01 (11)  | C2—C3—C9—C8     | -0.1 (2)     |
| N1—C2—C3—C9  | 1.15 (19)    | C2—C3—C9—C4     | 179.11 (13)  |
| C10—C2—C3—C9 | -176.74 (12) | C3—C2—C10—C11   | 139.32 (15)  |
| C9—C4—C5—C6  | 0.2 (2)      | N1—C2—C10—C11   | -38.62 (18)  |
| C4—C5—C6—C7  | 0.3 (2)      | C3—C2—C10—C15   | -39.97 (19)  |
| C5—C6—C7—C8  | -0.6 (2)     | N1—C2—C10—C15   | 142.09 (13)  |
| C6—C7—C8—C9  | 0.4 (2)      | C15—C10—C11—C12 | 0.2 (2)      |
| C6—C7—C8—C1  | -179.14 (13) | C2—C10—C11—C12  | -179.14 (13) |
| O1—C1—C8—C7  | 0.8 (2)      | C10—C11—C12—C13 | 0.0 (2)      |
| N1—C1—C8—C7  | -179.33 (11) | C11—C12—C13—C14 | 0.0 (2)      |
| O1—C1—C8—C9  | -178.69 (12) | C12—C13—C14—C15 | -0.1 (2)     |
| N1—C1—C8—C9  | 1.15 (18)    | C13—C14—C15—C10 | 0.2 (2)      |
| C7—C8—C9—C4  | 0.2 (2)      | C11—C10—C15—C14 | -0.2 (2)     |
| C1—C8—C9—C4  | 179.67 (12)  | C2—C10—C15—C14  | 179.07 (13)  |
| C7—C8—C9—C3  | 179.44 (12)  |                 |              |

## Hydrogen-bond geometry (Å, °)

| <i>D</i> —H... <i>A</i>    | <i>D</i> —H | H... <i>A</i> | <i>D</i> ... <i>A</i> | <i>D</i> —H... <i>A</i> |
|----------------------------|-------------|---------------|-----------------------|-------------------------|
| N1—H1N...O1 <sup>i</sup>   | 0.896 (16)  | 1.945 (16)    | 2.8373 (15)           | 174.0 (15)              |
| C11—H11...O1 <sup>ii</sup> | 0.93        | 2.59          | 3.4449 (19)           | 152                     |

Symmetry codes: (i) -x+1, -y+1, -z; (ii) -x, -y+1, -z.