

 Open access • Journal Article • DOI:10.18563/JOURNAL.M3.126

3D models related to the publication: Patterns of bilateral asymmetry and allometry in Late Devonian Polygnathus conodonts — Source link





Catherine Girard, Anne-Lise Charruault, Ronan Ledevin, Sabrina Renaud

Published on: 03 Mar 2021

Topics: Late Devonian extinction and Conodont

Related papers:

- [Polygnathus sharyuensis nom. nov., a New Replacement Name for the Famennian \(Upper Devonian\) Polygnathus mawsonae Ovnatanova et al., 2017 \(Conodonta\)](#)
- [Polygnathus bagialensis, New Name For The Homonymous P. praetrigonicus Savage, 1995, and Polygnathus abbesensis, New Name for the Homonymous P. borealis Savage, 1995 \(Conodontes, Polygnathidae\)](#)
- [Late devonian—eaely carboniferous conodonts from the hainan island](#)
- [New Data on the Famennian Conodonts from Esfahan Area](#)
- [Ontogenetic and intraspecific variation in the late Emsian – Eifelian \(Devonian\) conodonts Polygnathus serotinus and P. bultyncki in the Prague Basin \(Czech Republic\) and Nevada \(western U.S.\)](#)

Share this paper:    

View more about this paper here: <https://typeset.io/papers/3d-models-related-to-the-publication-patterns-of-bilateral-xpfnq3dj5>



HAL
open science

3D models related to the publication: Patterns of bilateral asymmetry and allometry in Late Devonian *Polygnathus conodonts*

Catherine Girard, Anne-lise Charruault, Ronan Ledevin, Sabrina Renaud

► To cite this version:

Catherine Girard, Anne-lise Charruault, Ronan Ledevin, Sabrina Renaud. 3D models related to the publication: Patterns of bilateral asymmetry and allometry in Late Devonian *Polygnathus conodonts*. MorphoMuseum, Association Palæovertebrata, 2021, 7 (2), 10.18563/journal.m3.126 . hal-03283620

HAL Id: hal-03283620

<https://hal.archives-ouvertes.fr/hal-03283620>

Submitted on 12 Jul 2021

HAL is a multi-disciplinary open access archive for the deposit and dissemination of scientific research documents, whether they are published or not. The documents may come from teaching and research institutions in France or abroad, or from public or private research centers.

L'archive ouverte pluridisciplinaire **HAL**, est destinée au dépôt et à la diffusion de documents scientifiques de niveau recherche, publiés ou non, émanant des établissements d'enseignement et de recherche français ou étrangers, des laboratoires publics ou privés.

3D models related to the publication: Patterns of bilateral asymmetry and allometry in Late Devonian *Polygnathus* conodonts

Catherine Girard^{1*}, Anne-Lise Charruault¹, Ronan Ledevin^{2,3}, Sabrina Renaud²

¹Institut des Sciences de l'Evolution de Montpellier (ISEM), Univ Montpellier, CNRS, EPHE, IRD, Montpellier, France

²Laboratoire de Biométrie et Biologie Evolutive, UMR 5558 CNRS, Université Claude Bernard Lyon 1, Université de Lyon, 69100 Villeurbanne, France

³Current address: UMR5199 PACEA, Université de Bordeaux, Allée Geoffroy Saint Hilaire (Bat. B8), 33615 PESSAC, France

*Corresponding author: catherine.girard@umontpellier.fr

Abstract

This contribution contains the 3D models of the set of Famennian conodont elements belonging to the species *Polygnathus glaber* and *Polygnathus communis* analyzed in the following publication: Renaud et al. 2021: Patterns of bilateral asymmetry and allometry in Late Devonian *Polygnathus*. *Palaeontology*, <https://doi.org/10.1111/pala.12513>.

Keywords: Conodonts, Late Devonian, *Polygnathus communis*, *Polygnathus glaber*

Submitted:2020-08-11, published online:2021-03-03. <https://doi.org/10.18563/journal.m3.126>

Inv. Nr	Taxon	Description
UM BUS 001	<i>Polygnathus glaber</i>	right P1 element
UM BUS 002	<i>Polygnathus glaber</i>	right P1 element
UM BUS 003	<i>Polygnathus glaber</i>	right P1 element
UM BUS 004	<i>Polygnathus glaber</i>	left P1 element
UM BUS 005	<i>Polygnathus glaber</i>	left P1 element
UM BUS 006	<i>Polygnathus glaber</i>	right P1 element
UM BUS 007	<i>Polygnathus glaber</i>	right P1 element
UM BUS 008	<i>Polygnathus glaber</i>	left P1 element
UM BUS 009	<i>Polygnathus glaber</i>	left P1 element
UM BUS 010	<i>Polygnathus glaber</i>	right P1 element
UM BUS 011	<i>Polygnathus glaber</i>	right P1 element
UM BUS 012	<i>Polygnathus glaber</i>	right P1 element
UM BUS 013	<i>Polygnathus glaber</i>	left P1 element
UM BUS 014	<i>Polygnathus glaber</i>	left P1 element
UM BUS 015	<i>Polygnathus glaber</i>	left P1 element
UM BUS 016	<i>Polygnathus glaber</i>	right P1 element
UM BUS 017	<i>Polygnathus glaber</i>	left P1 element
UM BUS 018	<i>Polygnathus glaber</i>	left P1 element
UM BUS 019	<i>Polygnathus glaber</i>	left P1 element
UM BUS 020	<i>Polygnathus glaber</i>	left P1 element
UM BUS 021	<i>Polygnathus glaber</i>	right P1 element
UM BUS 022	<i>Polygnathus glaber</i>	left P1 element
UM BUS 023	<i>Polygnathus glaber</i>	left P1 element
UM BUS 024	<i>Polygnathus glaber</i>	left P1 element
UM BUS 025	<i>Polygnathus glaber</i>	left P1 element
UM BUS 026	<i>Polygnathus glaber</i>	left P1 element
UM BUS 027	<i>Polygnathus glaber</i>	right P1 element
UM BUS 028	<i>Polygnathus glaber</i>	right P1 element
UM BUS 029	<i>Polygnathus glaber</i>	right P1 element
UM BUS 030	<i>Polygnathus glaber</i>	right P1 element
UM CTB 001	<i>Polygnathus communis</i>	right P1 element
UM CTB 002	<i>Polygnathus communis</i>	right P1 element
UM CTB 003	<i>Polygnathus communis</i>	right P1 element
UM CTB 004	<i>Polygnathus communis</i>	right P1 element
UM CTB 005	<i>Polygnathus communis</i>	left P1 element
UM CTB 006	<i>Polygnathus communis</i>	left P1 element
UM CTB 007	<i>Polygnathus communis</i>	left P1 element
UM CTB 008	<i>Polygnathus communis</i>	left P1 element
UM CTB 009	<i>Polygnathus communis</i>	right P1 element
UM CTB 010	<i>Polygnathus communis</i>	left P1 element
UM CTB 011	<i>Polygnathus communis</i>	right P1 element
UM CTB 012	<i>Polygnathus communis</i>	right P1 element
UM CTB 013	<i>Polygnathus communis</i>	right P1 element
UM CTB 014	<i>Polygnathus communis</i>	right P1 element
UM CTB 015	<i>Polygnathus communis</i>	right P1 element
UM CTB 016	<i>Polygnathus communis</i>	left P1 element
UM CTB 017	<i>Polygnathus communis</i>	right P1 element
UM CTB 018	<i>Polygnathus communis</i>	right P1 element
UM CTB 019	<i>Polygnathus communis</i>	right P1 element
UM CTB 020	<i>Polygnathus communis</i>	right P1 element
UM CTB 021	<i>Polygnathus communis</i>	left P1 element
UM CTB 022	<i>Polygnathus communis</i>	left element
UM CTB 023	<i>Polygnathus communis</i>	left P1 element
UM CTB 024	<i>Polygnathus communis</i>	left P1 element
UM CTB 025	<i>Polygnathus communis</i>	left P1 element
UM CTB 026	<i>Polygnathus communis</i>	left P1 element
UM CTB 027	<i>Polygnathus communis</i>	left P1 element
UM CTB 028	<i>Polygnathus communis</i>	left P1 element
UM CTB 029	<i>Polygnathus communis</i>	left P1 element
UM CTB 030	<i>Polygnathus communis</i>	left P1 element
UM CTB 031	<i>Polygnathus communis</i>	left P1 element
UM CTB 032	<i>Polygnathus communis</i>	left P1 element
UM CTB 033	<i>Polygnathus communis</i>	left P1 element
UM CTB 034	<i>Polygnathus communis</i>	right P1 element

Table 1. 3D models of *Polygnathus glaber* and of *Polygnathus communis*. Collection: University of Montpellier, France.

INTRODUCTION

This contribution presents 3D models of 64 Famennian (Late Devonian) conodont elements belonging to two *Polygnathus* species (see Table 1 and Fig. 1). All elements correspond

to platform (P1) elements, located at the rear of the conodont feeding apparatus. *Polygnathus communis* was sampled by 34 elements from two levels of the Col des Tribes section (CTB; Montagne Noire, France) (Girard *et al.* 2014) and *Polygnathus glaber* by 30 elements from one level of the Buschteich section (BUS; Saxo-Thuringia, Germany) (Girard *et al.* 2017). They illustrate the morphological variation between and within the species, including bilateral asymmetry and growth.

The 3D surface of these elements were used in a geometric morphometric analysis complementing an extensive 2D quantitative study (Renaud *et al.* 2021). Based on a set of sliding semi-landmarks located at the edge of the platform and on the carina, this study aimed at disentangling the different components of the morphological variation in Late Devonian *Polygnathus* P1 elements. The 3D morphometric analysis improved the description of the geometric changes involved in growth and bilateral asymmetry and provided evidence that the balance between the two components of shape variance varies across species. Allometry was most pronounced in *Polygnathus communis*, leading from small, heart-shaped to large, lanceolate platforms. In contrast, bilateral asymmetry was most pronounced in *Po. glaber*, suggestive in this species of a strict directional asymmetry. On the mean shape of left elements, the posterior margin extended more ventrally, the posterior platform was more elevated and displayed a shallower groove, as confirmed by the example of actual elements (Fig. 1). The reverse is true for the right element, with, however, less offset between the ventral extension of the posterior and anterior margins. Knowing that the left blade is assumed to insert behind the right one, based on existing clusters (Donoghue and Purnell 1999; Martínez-Pérez *et al.* 2016), the geometric differences between right and left elements, evidenced on the 3D models, could be associated with the asymmetrical pairing of the elements during occlusion.

METHODS

Digitization of the specimens was performed using an X-ray microtomograph (μ CT) Phoenix nanotomeS on the AniRA-Immos platform of the SFR Biosciences (UMS 3444, ENS Lyon) at a cubic voxel resolution of 1 μ m. The scanning parameters were as follow: 100 kV, 70 μ A, 3000 projections at 360° with no filter. The 3D surfaces were extracted semi-automatically within AVIZO 9 (Thermofisher Scientific) using the segmentation threshold selection tool. The 3D surfaces are provided in .ply format, and can therefore be opened with a wide range of freeware.

ACKNOWLEDGEMENTS

We acknowledge the contribution of SFR Biosciences (UMS3444/CNRS, US8/Inserm, ENS de Lyon, UCBL) AniRa-ImmOs facility. We particularly thank Mathilde Bouchet for her kind assistance during the scanning sessions. The research was supported by the ANR ECODEV (ANR-13-BSV7-005) and the Project Marcon (Labex CeMEB). This is contribution ISEM 2020-226.

BIBLIOGRAPHY

- Donoghue, P. C., Purnell, M. A. 1999. Mammal-like occlusion in conodonts. *Paleobiology* 25(1), 58-74.
- Girard, C., Cornée, J.-J., Charruault, A.-L., Corradini, C., Weyer, D., Bartzsch, K., Joachimski, M. M., Feist, R. 2017. Conodont biostratigraphy and palaeoenvironmental trends during the Famennian (Late Devonian) in the Thuringian Buschteich section (Germany). *Newsletters on Stratigraphy* 50(1), 71-89. <https://doi.org/10.1127/nos/2016/0318>
- Girard, C., Cornée, J.-J., Corradini, C., Fravallo, A., Feist, R. 2014. Palaeoenvironmental changes at Col des Tribes (Montagne Noire, France), a reference section for the Famennian of north Gondwana-related areas. *Geological Magazine* 151, 864-884. <https://doi.org/10.1017/S0016756813000927>
- Martínez-Pérez, C., Rayfield, E. J., Botella, H., Donoghue, P. C. 2016. Translating taxonomy into the evolution of conodont feeding ecology. *Geology* 44, 247-250. <https://doi.org/10.1130/G37547.1>
- Renaud, S., Ecalte, B., Claisse, P., Charruault, A.-L., Ledevin, R., Girard, C. 2021. Patterns of bilateral asymmetry and allometry in Late Devonian *Polygnathus* conodonts. *Palaeontology*. <https://doi.org/10.1111/pala.12513>

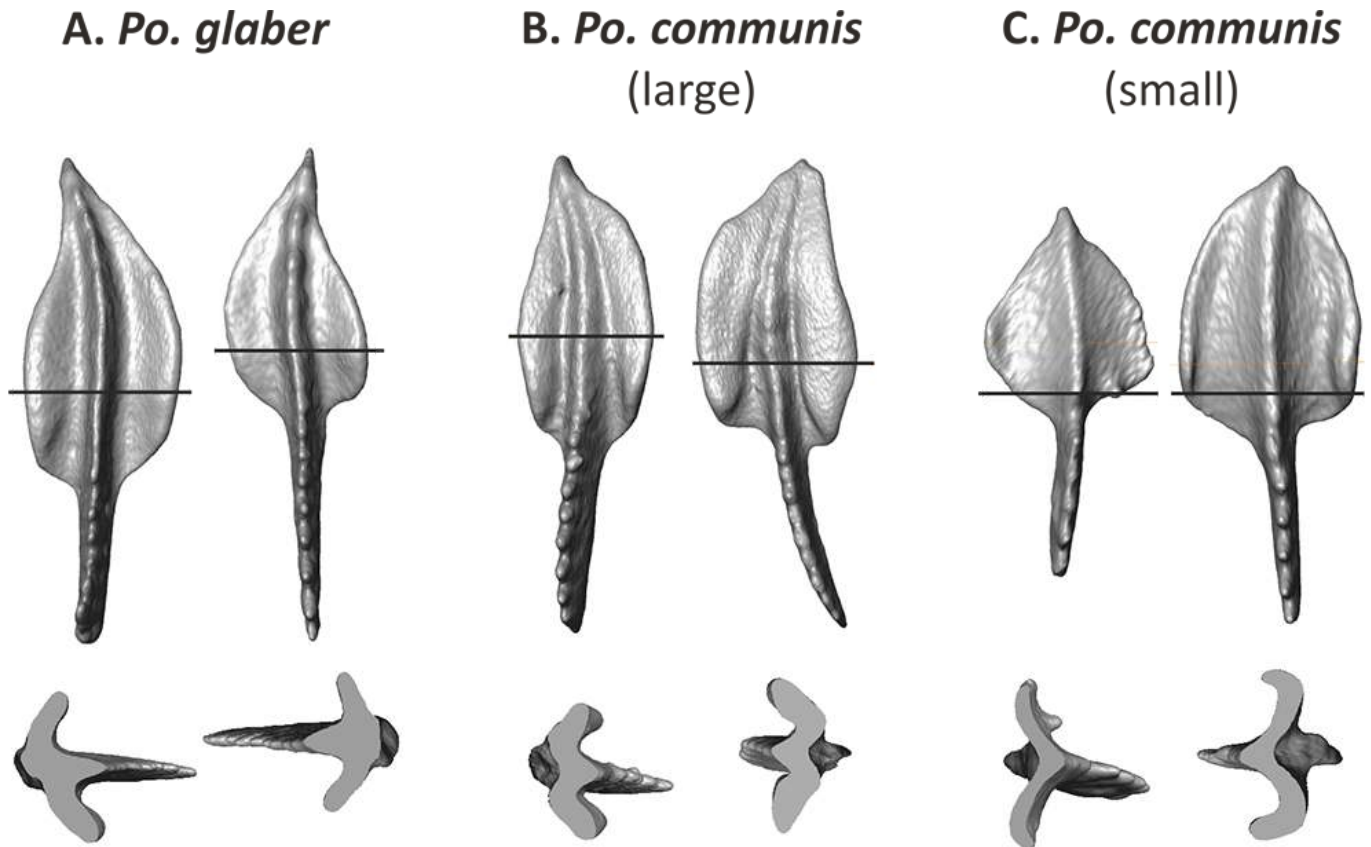


Figure 1. Illustrations based on isolated right and left elements of *Po. glaber* (A), large *Po. communis* (B) and small *Po. communis* (C). (A, B, C) left element to the left and right element to the right. Top panels, oral view; bottom panels, profile view. The position of the slice corresponding to the profile view is marked by a line on the oral view. Elements not to scale. Specimens figured: (A) *Po. glaber* right (UM BUS 027) and left (UM BUS 026); (B) large *Po. communis* left (UM CTB 010) and right (UM CTB 009); (C) small *Po. communis* left (UM CTB 006) and right (UM CTB 003).