

4-D-Var or ensemble Kalman filter?

By EUGENIA KALNAY^{1*}, HONG LI¹, TAKEMASA MIYOSHI², SHU-CHIH YANG¹ and JOAQUIM BALLABRERA-POY³, ¹University of Maryland, College Park, 3431 CSS building, MD 20742-2425, USA; ²Numerical Prediction Division, Japan Meteorological Agency, Tokyo, Japan; ³Institut de Ciències del Mar (CSIC), Barcelona, Spain

(Manuscript received 4 June 2006; in final form 20 May 2007)

ABSTRACT

We consider the relative advantages of two advanced data assimilation systems, 4-D-Var and ensemble Kalman filter (EnKF), currently in use or under consideration for operational implementation. With the Lorenz model, we explore the impact of tuning assimilation parameters such as the assimilation window length and background error covariance in 4-D-Var, variance inflation in EnKF, and the effect of model errors and reduced observation coverage. For short assimilation windows EnKF gives more accurate analyses. Both systems reach similar levels of accuracy if long windows are used for 4-D-Var. For infrequent observations, when ensemble perturbations grow non-linearly and become non-Gaussian, 4-D-Var attains lower errors than EnKF. If the model is imperfect, the 4-D-Var with long windows requires weak constraint. Similar results are obtained with a quasi-geostrophic channel model. EnKF experiments made with the primitive equations SPEEDY model provide comparisons with 3-D-Var and guidance on model error and ‘observation localization’. Results obtained using operational models and both simulated and real observations indicate that currently EnKF is becoming competitive with 4-D-Var, and that the experience acquired with each of these methods can be used to improve the other. A table summarizes the pros and cons of the two methods.

1. Introduction

The data assimilation community is at a transition point, with a choice between variational methods, for which there is considerable experience, and ensemble methods, which are relatively new. Many centres use 3-D-Var (e.g. Parrish and Derber, 1992), which is an economical and accurate statistical interpolation scheme that does not include the effects of ‘errors of the day’, although there are several proposed 3-D-Var schemes that incorporate some aspects of flow-dependent forecast errors (e.g. Riishojgaard, 1998; Corazza et al., 2002, <http://ams.confex.com/ams/pdfpapers/28755.pdf>; De Ponca et al., 2006, www.emc.ncep.noaa.gov/officenotes/newernotes/on452.pdf). Several centres (ECMWF, France, UK, Japan, Canada) have switched to 4-D-Var (e.g. Rabier et al., 2000), which requires the development and maintenance of an adjoint model and is computationally much more expensive, but which has proven to be significantly more accurate than 3-D-Var in pre-operational tests leading to their implementation. In addition to its demonstrated higher accuracy, 4-D-Var was developed and implemented because it allows the assimilation of asymptotic data such as satellite radiances at their correct obser-

vation time, and because further improvements, such as weak constraint formulations, could be incorporated later. One of the potentially promising extensions to 4-D-Var is the use of reduced rank Kalman filters to estimate the analysis error covariance, but tests in a high resolution NWP system showed no significant benefit (Fisher and Hollingsworth, 2004, ams.confex.com/ams/84Annual/techprogram/paper_74522.htm).

Research on ensemble Kalman filtering (EnKF) started with Evensen (1994), Evensen and van Leeuwen (1996), Burgers et al. (1998) and Houtekamer and Mitchell (1998). Their methods can be classified as *perturbed observations* (or stochastic) EnKF, and are essentially ensembles of data assimilation systems. A second type of EnKF is a class of *square root* (or deterministic) filters (Anderson, 2001; Bishop et al., 2001; Whitaker and Hamill, 2002; see review of Tippett et al., 2003), which consist of a single analysis based on the ensemble mean, and where the analysis perturbations are obtained from the square root of the Kalman Filter analysis error covariance. Whitaker and Hamill (2002) concluded that square root filters are more accurate than perturbed observation filters because they avoid the additional sampling error introduced by perturbing the observations with random errors, but Lawson and Hansen (2004) suggested that perturbed observations filters could handle non-linearities better than the square root filters. The three square root filters discussed by Tippett et al. (2003) assimilate observations *serially* (as suggested by Houtekamer and Mitchell, 2001), which increases their

*Corresponding author.
e-mail: ekalnay@atmos.umd.edu
DOI: 10.1111/j.1600-0870.2007.00261.x

efficiency by avoiding the inversion of large matrices. Zupanski (2005) proposed the Maximum Likelihood Ensemble Filter where a 4-D-Var cost function with possibly non-linear observation operators is minimized within the subspace of the ensemble forecasts. A review of EnKF methods is presented in Evensen (2003) and the relationship between EnKF and other low-rank Kalman Filters is discussed in Nerger et al. (2005).

Ott et al. (2002, 2004) introduced an alternative square root filter where efficiency is achieved by computing the Kalman filter analysis at each grid point based on the local (in space) structure of the ensemble forecasts within a 3-D-grid point volume that includes neighbouring grid points. The Kalman filter equations are solved for each grid point using as basis the singular vectors of the ensemble within the local volume. This method, known as local ensemble Kalman filter (LEKF) allows processing all the observations within the local volume simultaneously, and since the analysis at each grid point is done independently from other grid points, it allows for parallel implementation. Hunt (2005) and Hunt et al. (2007) developed the local ensemble transform Kalman filter (LETKF) using an approach similar to Bishop et al. (2001) but performed locally as in Ott et al. (2004). Since the LETKF does not require an orthogonal basis, its computational cost is reduced when compared to the original LEKF. In the LETKF localization is based on the selection of observations that are assimilated at each grid point rather than on a local volume, allowing for more flexibility than the LEKF (Fertig et al., 2007b). Keppenne and Rienecker (2002) developed a similar local EnKF for ocean data assimilation.

Hunt et al. (2004) extended EnKF to four dimensions, allowing the assimilation of asynchronous observations, a procedure also suggested by Evensen (2003, section 4.6), and by Lorenc (2003), that becomes particularly efficient in the LETKF formulation. This method (4-D-EnKF) expresses an observation as a linear combination of the ensemble perturbations at the time of the observation. The same linear combination of ensemble members can then be used to move the observation forward (or backward) in time to the analysis time. This simple method gives the Ensemble Kalman Filter the ability of 4-D-Var to assimilate observations at their right time, but without iterations and allowing the use of future observations when available (e.g. within reanalysis). Although 4-D-Var transports the observations in the subspace of the tangent linear model rather than the ensemble subspace, Fertig et al. (2007a) found that 4-D-Var and 4-D-LETKF yield similar results when the 4-D-Var assimilation window is sufficiently long, and when the 4-D-LETKF is performed frequently enough.

In the Meteorological Service of Canada, where perturbed observations EnKF was pioneered for the atmosphere, preoperational tests indicated that 4-D-Var yielded forecasts clearly superior to those of 3-D-Var, whereas EnKF forecasts were only comparable to 3-D-Var (Houtekamer et al., 2005). Until recently, there was no clear evidence that EnKF could outperform an operational 3-D-Var analysis, let alone 4-D-Var. However, in the last

year there have been a number of encouraging new results. In an intercomparison organized by NCEP, Whitaker et al. (2007) and Szunyogh et al. (2007) showed that the application of the Ensemble Square Root Filter (EnSRF) and the LETKF to the NCEP global forecasting system (GFS) at resolution T62/L28, using all operationally available atmospheric observations (except for satellite radiances), yields better forecasts than the operational 3-D-Var using the same data. Houtekamer and Mitchell (2005) tested a number of changes to the configuration that became operational in 2005 to create the ensemble forecasting system initial perturbations. A configuration that included a few changes such as increased model resolution, the addition of perturbations representing model errors after the analysis (rather than after the forecast), and a 4-D-EnKF extension, yielded a performance of their EnKF comparable to that of 4-D-Var, and hence better than 3-D-Var (Peter Houtekamer, personal communication, 2006). The next 5–10 yr will show whether EnKF becomes the operational approach of choice, or 4-D-Var and its improvements remains the preferred advanced data assimilation method.

The purpose of this paper is to compare some of the advantages and disadvantages of these two methods based on recent experience. In Section 2, we discuss experimental results with the very non-linear Lorenz (1963) model, which although simple, bring up several important aspects of practical optimization. Section 3 contains a discussion of the characteristics of different approaches of EnKF and the experience acquired implementing the Local Ensemble Kalman Filter developed at the University of Maryland on a quasi-geostrophic channel model and a low-resolution primitive equations model using both perfect model and reanalysis ‘observations’. It also contains a summary of recent results obtained using the LETKF at the University of Maryland and with the Earth Simulator of Japan. In Section 4, we discuss questions of efficiency, model error and non-linearity, and summarize arguments in favour and against the two methods. We conclude by adapting and modifying a table presented by Lorenc (2003) in view of these results.

2. Experiments with the Lorenz (1963) model

In this section, we compare the performance of 4-D-Var, EnKF, and the Extended Kalman Filter (EKF). The EKF allows the Kalman filter to be applied to non-linear models via the linear tangent and adjoint models. We follow the classic papers of Miller et al. (1994) and Pires et al. (1996) and use the Lorenz (1963) model for a simulation of data assimilation. This model has only 3 degrees of freedom, so (unlike experiments with realistic models) it is possible to implement the Ensemble Kalman Filter at full rank, or even with more ensemble members than the size of the model.¹ Its numerical cost allows tuning the 4-D-Var

¹Evensen (1997) compared for this model a non-linear solution of the 4D-Var cost function minimized over a very long assimilation period (many cycles) using a method of gradient descent with a weak constraint, with 1000-member ensembles of Kalman filter and Kalman smoother.

Table 1. Impact of the window length on the RMS Analysis error for 4-D-Var when x, y, z are observed every eight or 25 steps (perfect model experiments)

Obs./8 steps	Win = 8	16	24	32	40	48	56	64	72
Fixed window	0.59	0.51	0.47	0.43	0.62	0.95	0.96	0.91	0.98
QVA (starting with short window)	0.59	0.51	0.47	0.43	0.42	0.39	0.44	0.38	0.43
Obs./25 steps	Win = 25	50	75	100	125	150			
Fixed window	0.71	0.86	0.94	1.22	1.58	2.11			
QVA (starting with short window)	0.71	0.62	0.62	0.62	0.62	0.80			

background error covariance and window length. First, perfect model experiments are performed observing all variables over a short interval (eight time steps) during which perturbations grow essentially linearly, and over a longer interval (25 time steps) allowing perturbations to develop non-linearly. Then we compare the impacts of observing only subsets of variables and of model errors. The results illustrate several characteristics of the schemes that in more realistic settings require special attention or tuning.

2.1. D-Var: tuning the window length and background error covariance

In the standard formulation of 4-D-Var (e.g. Rabier and Liu, 2003) the analysis is obtained by minimizing a cost function

$$J(\mathbf{x}_0) = \frac{1}{2}(\mathbf{x}_0 - \mathbf{x}_0^b)^T \mathbf{B}^{-1}(\mathbf{x}_0 - \mathbf{x}_0^b) + \frac{1}{2} \sum_{i=0}^N [H_i(\mathbf{x}_i) - \mathbf{y}_i]^T \mathbf{R}_i^{-1} [H_i(\mathbf{x}_i) - \mathbf{y}_i] = J^b + J^o \quad (1)$$

computed over an assimilation window of length $t_N - t_0$, where \mathbf{x}_0^b is the background or first guess at t_0 , \mathbf{y}_i and \mathbf{R}_i are vector of observations made at time t_i and its corresponding observation error covariance, \mathbf{B} is the background error covariance, $\mathbf{x}_i = M_i(\mathbf{x}_0)$ is the model state at the observation time t_i obtained by integrating the non-linear model M_i , and H_i is the (non-linear) observation operator at time t_i that maps model variables to observation variables. The control variable is the model state vector \mathbf{x}_0 at the beginning of the window t_0 . This is a *strong constraint* minimization in which the analysis valid at t_N is given by the model forecast $\mathbf{x}_N = M_N(\mathbf{x}_0)$.

For the first set of experiments all three model variables are observed, so that H and its tangent linear operator \mathbf{H} are equal to the identity matrix \mathbf{I} . In order to obtain the minimum of J by iterative methods the most efficient computation of the gradient requires the integration of the adjoint model \mathbf{M}_i^T (transpose of the linear tangent model \mathbf{M}_i). Although \mathbf{M}_i and \mathbf{M}_i^T are linear with respect to perturbations, they do depend on the evolving model state (e.g. Kalnay, 2003, p. 213). The simulated observations contain errors in accordance to $\mathbf{R} = 2\mathbf{I}$ as in Miller et al. (1994). The corresponding observational error standard deviation ($\sqrt{2}$),

is an order of magnitude smaller than the natural variability, and all successful data assimilation experiments have RMS errors smaller than this value even with sparse observations. The experiment design consists of a perfect model scenario where the initial conditions are chosen as a random state of the truth run. The performance of each assimilation experiment is measured using the Root Mean Square (RMS) of the difference between the analysis and the true solution. We performed experiments assimilating observations of the three variables every 8 time steps of length 0.01, and every 25 steps as in Miller et al. (1994). The shortest decorrelation time scale for the model is about 16 steps, so that during 8 steps perturbations generally evolve linearly and there is little difficulty in obtaining an accurate analysis. 25 steps is an interval long enough to introduce some non-linear evolution of perturbations and the problems associated with the presence of multiple minima. The corresponding optimal 3-D-Var background error covariances obtained iteratively (Yang et al., 2006) have eigenvalues 0.10, 1.11, 1.76 for eight time steps (a size comparable to that of the observational errors), and are an order of magnitude larger for 25 steps (0.67, 9.59 and 14.10).

In order to be competitive with a full rank EnKF, 4-D-Var requires longer assimilation windows, but this risks introducing the problem of multiple minima (Pires et al., 1996). As shown in Table 1, with observations every eight steps, lengthening the window of assimilation reduces the RMS analysis error (at the expense of increased computational cost) up to 32 steps. Beyond that, errors become larger because of the problem of multiple minima (Miller et al., 1994). This problem can be overcome with the Quasi-static Variational Assimilation (QVA) approach proposed by Pires et al. (1996), where short windows are used initially and progressively increased to the maximum, while performing quasi-static adjustments of the minimizing solution.

Table 1 compares the performance of the assimilation as a function of the assimilation window length (either fixing the window, or with the QVA approach). With 8 steps the improvement of the analysis RMS errors with window length extends up to a window of about 48 steps. For observations every 25 steps, the optimal window length is between 50 and 125 steps, but the results are strongly sensitive to the choice of background error covariance. In operations, if a new analysis is needed every 6 hr,

Table 2. Impact of tuning the background error covariance by reducing the size of the covariance obtained for 3-D-Var but retaining its structure (perfect model experiments). Observations and analyses are made every eight steps (top) and 25 steps (bottom). $\mathbf{B} = \infty$ corresponds to not including the background term in the cost function

Win = 8	$\mathbf{B} = \infty$	\mathbf{B}_{3-DV}	$0.5\mathbf{B}_{3-DV}$	$0.4\mathbf{B}_{3-DV}$	$0.3\mathbf{B}_{3-DV}$	$0.2\mathbf{B}_{3-DV}$	$0.1\mathbf{B}_{3-DV}$	$0.05\mathbf{B}_{3-DV}$
RMSE	0.78	0.59	0.53	0.52	0.50	0.51	0.65	>2.5
Win = 25	$\mathbf{B} = \infty$	\mathbf{B}_{3-DV}	$0.5\mathbf{B}_{3-DV}$	$0.05\mathbf{B}_{3-DV}$	$0.03\mathbf{B}_{3-DV}$	$0.02\mathbf{B}_{3-DV}$	$0.01\mathbf{B}_{3-DV}$	$0.005\mathbf{B}_{3-DV}$
RMSE	0.75	0.71	0.69	0.56	0.54	0.53	0.58	>3

and if the optimal window length is a few days, the computation of overlapping windows is required (Fisher et al., 2005).

The minimization of (1) requires an estimation of the background error covariance \mathbf{B} . If 4-D-Var is started from a 3-D-Var analysis, the use of $\mathbf{B} = \mathbf{B}_{3-DV}$ (the optimal 3-D-Var background error covariance) is a reasonable and widely used estimation. However, if 4-D-Var is cycled, the background \mathbf{x}_0^b is provided by the 4-D-Var analysis \mathbf{x}_N^a of the previous cycle, and after a transient of a few cycles, this background should be more accurate than the 3-D-Var forecast. Therefore, \mathbf{B} should be significantly smaller than \mathbf{B}_{3-DV} . In our experiments we obtained \mathbf{B}_{3-DV} by iteratively optimizing the 3-D-Var data assimilation as in Yang et al. (2006). We also computed the background error covariance from the 4-D-Var analysis errors (which cannot be done in practice) and found that its structure was very similar to that of \mathbf{B}_{3-DV} with a magnitude about 20 times smaller for the case of 25 steps, suggesting that the use in 4-D-Var of a covariance proportional to \mathbf{B}_{3-DV} and tuning its amplitude is a good strategy to estimate \mathbf{B} . Table 2 shows that tuning the amplitude of the background error covariance has a large impact on the results. Similar results were obtained with the more complex quasi-geostrophic model of Rotunno and Bao (1996) (Section 3.1). The ratio of the size of \mathbf{B}_{3-DV} to the optimal \mathbf{B}_{4-DV} is larger than would be expected in a more realistic model because in a perfect model scenario the improvement over 3-D-Var obtained using 4-D-Var with optimal parameters is larger than in the presence of model errors (see Sections 2.3 and 3.2).

2.1. Kalman filter: formulation and tuning the covariance inflation

4-D-Var is next compared with both extended and Ensemble Kalman filter (EKF), which are briefly described here. The EKF (e.g. Ide et al., 1997) consists of a forecast step,

$$\mathbf{x}_n^b = M_n(\mathbf{x}_{n-1}^a) \quad (2a)$$

$$\mathbf{B}_n = \mathbf{M}_n \mathbf{A}_{n-1} \mathbf{M}_n^T + \mathbf{Q}_n \quad (2b)$$

and an analysis step,

$$\mathbf{x}_n^a = \mathbf{x}_n^b + \mathbf{K}_n (\mathbf{y}_n - H \mathbf{x}_n^b) \quad (3a)$$

$$\mathbf{A}_n = (\mathbf{I} - \mathbf{K}_n H) \mathbf{B}_n, \quad (3b)$$

where \mathbf{K}_n is the Kalman gain matrix given by two equivalent formulations,

$$\mathbf{K}_n = \mathbf{B}_n \mathbf{H}^T (\mathbf{R} + \mathbf{H} \mathbf{B}_n \mathbf{H}^T)^{-1} = (\mathbf{B}_n^{-1} + \mathbf{H}^T \mathbf{R}^{-1} \mathbf{H})^{-1} \mathbf{H}^T \mathbf{R}^{-1}, \quad (4)$$

and \mathbf{A}_n is the new analysis error covariance. Here n denotes the analysis step (in our case the analysis is done at the observation time, either 8 or 25 model time steps), M_n is the non-linear model that provides the forecast or background \mathbf{x}_n^b at step n starting from the previous analysis \mathbf{x}_{n-1}^a , \mathbf{M}_n and \mathbf{M}_n^T are the linear tangent and adjoint models, \mathbf{B}_n is the background error covariance at the time of the analysis, and \mathbf{Q}_n is the covariance of the model errors (assumed to be zero here). As in the 4-D-Var experiments, we used $\mathbf{H}_n = \mathbf{I}$ and $\mathbf{R}_n = 2\mathbf{I}$.

The EnKF is similar to EKF, the main difference being that an ensemble of K forecasts

$$\mathbf{x}_{n,k}^b = M_n(\mathbf{x}_{n-1,k}^a), \quad k = 1 \dots K \quad (5a)$$

is carried out in order to estimate the background error covariance \mathbf{B}_n . Defining the forecast ensemble mean as $\bar{\mathbf{x}}_n^b = \frac{1}{K} \sum_{k=1}^K \mathbf{x}_{n,k}^b$, and \mathbf{X}_n^b as the $M \times K$ matrix whose columns are the K ensemble perturbations $\mathbf{x}_{n,k}^b - \bar{\mathbf{x}}_n^b$, and M is the dimension of the state vector, then

$$\mathbf{B}_n = \frac{1}{K-1} \mathbf{X}_n^b \mathbf{X}_n^{bT}. \quad (5b)$$

In the analysis step we used the second formulation in (4) and solved

$$[\mathbf{I} + \mathbf{B}_n \mathbf{H}^T \mathbf{R}^{-1} \mathbf{H}] (\bar{\mathbf{x}}_n^a - \bar{\mathbf{x}}_n^b) = \mathbf{B}_n \mathbf{H}^T \mathbf{R}^{-1} (\mathbf{y}_n - H \bar{\mathbf{x}}_n^b) \quad (6a)$$

iteratively to obtain $\bar{\mathbf{x}}_n^a$, the new analysis ensemble mean.

Alternatively, the analysis mean can be obtained from (3a) with

$$\mathbf{K}_n = (\mathbf{H}^T \mathbf{R}^{-1} \mathbf{H} + \mathbf{B}_n^{-1})^{-1} \mathbf{H}^T \mathbf{R}^{-1} = \mathbf{X}_n^b [(\mathbf{H} \mathbf{X}_n^b)^T \mathbf{R}^{-1} (\mathbf{H} \mathbf{X}_n^b) + (K-1)\mathbf{I}]^{-1} (\mathbf{H} \mathbf{X}_n^b)^T \mathbf{R}^{-1} \quad (6b)$$

where the matrix inversion is performed in the $K \times K$ space of the ensemble perturbations.

We used the ETKF approach to obtain the analysis perturbations (Bishop et al., 2001; Hunt, 2005; Hunt et al., 2007):

$$\mathbf{A}_n = \frac{1}{K-1} \mathbf{X}_n^a \mathbf{X}_n^{aT} = \mathbf{X}_n^b \hat{\mathbf{A}}_n \mathbf{X}_n^{bT},$$

where $\hat{\mathbf{A}}_n = [(\mathbf{H} \mathbf{X}_n^b)^T \mathbf{R}^{-1} (\mathbf{H} \mathbf{X}_n^b)]^{-1}$, a $K \times K$ matrix, represents the new analysis covariance in the K space of the

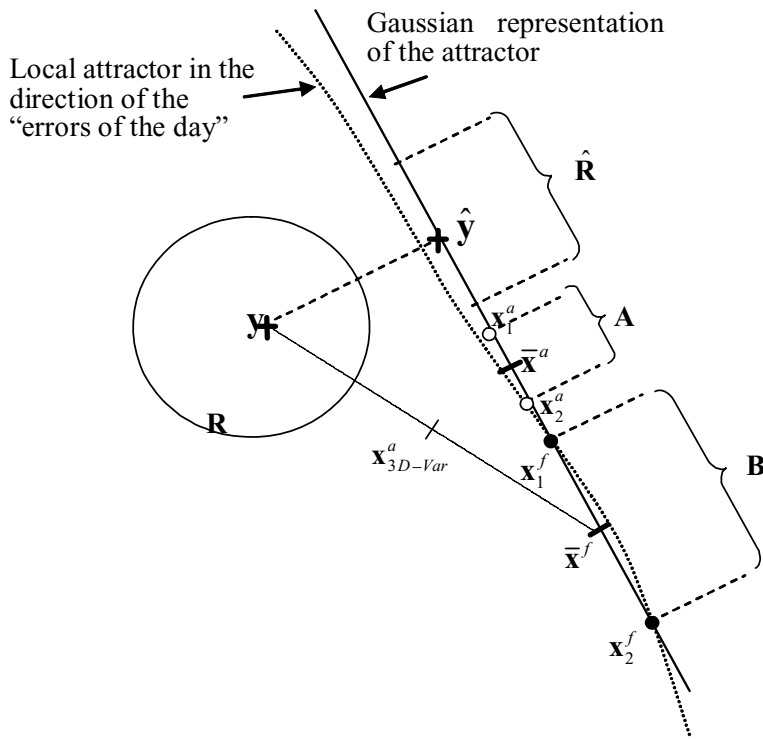


Fig. 1. Schematic of EnKF with an ensemble of $K = 2$ forecasts \mathbf{x}_1^f and \mathbf{x}_2^f lying on a local attractor (dotted line) which indicates the direction of the ‘errors of the day’. They are assumed to be Gaussian, with mean $\bar{\mathbf{x}}^f$ and background error covariance \mathbf{B} . The analysis is performed within the error subspace defined by the ensemble forecasts, an approximation of the local attractor (solid line). Only the projection $\hat{\mathbf{y}}$ of the observations \mathbf{y} (with error covariance $\hat{\mathbf{R}}$) on the ensemble subspace is assimilated. The analysis ensemble $\mathbf{x}_1^a, \mathbf{x}_2^a$ used as initial conditions for the following forecast, and the analysis mean $\bar{\mathbf{x}}^a$ are also linear combinations of the ensemble forecasts. A 3-D-Var analysis, by contrast, does not include information on the errors of the day.

ensemble forecasts. The new analysis perturbations are then obtained from the columns of

$$\mathbf{X}_n^a = \mathbf{X}_n^b [(K - 1)\hat{\mathbf{A}}_n]^{1/2}. \tag{7}$$

Since $\mathbf{H}\mathbf{X}_{n,k}^b; H\mathbf{x}_{n,k}^b - H\bar{\mathbf{x}}_n^b; H\mathbf{x}_{n,k}^b - \overline{H\mathbf{x}}_n^b$ and \mathbf{H} always appears multiplying a perturbation vector or matrix, in EnKF it is possible to use the full non-linear observation operator, without the need for its Jacobian or adjoint (e.g. Houtekamer and Mitchell, 2001; Evensen, 2003; Lorenc, 2003).

Figure 1 is a schematic representing the characteristics of an EnKF with K ensemble forecasts (black circles, $K = 2$ in the schematic). Although the forecasts states have the model dimension M , the ensemble lies on an attractor of much lower dimension (dotted curve). The ensemble of $K \ll M$ forecasts defines the subspace spanned by the background error covariance (solid line) of dimension $K - 1$ (denoted ‘error subspace’ by Nerger et al., 2005), which is an approximation of the model attractor. Only the projection of the observations (crosses) onto the error subspace is assimilated in EnKF. The analysis ensemble members (white circles) are also defined within the error subspace, that is, they are linear combinations of the ensemble forecasts obtained using the Kalman filter equations in the error subspace. The analysis ensemble mean is the best estimate of the analysis, and its spread is the best estimate of the analysis error, so that for a given ensemble size, the analysis ensemble provides the optimal initial conditions for the next ensemble of forecasts (Ehrendorfer and Tribbia, 1997).

Because of non-linearities, even with a perfect model ($\mathbf{Q}_n = 0$) both EKF and EnKF analyses can drift away from the real solution due to an underestimation of the true forecast error covariance. In addition, the EnKF is also affected by the lack of representation of the background error covariance outside the subspace defined by the ensemble forecasts (Fig. 1). Miller et al. (1994) suggested a Monte Carlo approach of adding perturbations to avoid the underestimation of the forecast errors in the EKF. Similarly, Corazza et al. (2002) found that ‘refreshing’ bred vectors by adding to them random perturbations after the analysis solved the related problem that bred vectors tend to collapse into a too small subspace (Wang and Bishop, 2003), and improved the performance of bred vectors in estimating the ‘errors of the day’. Yang et al. (2006) tested two approaches to avoid ‘filter divergence’ in the EKF. The first one is the multiplicative variance inflation suggested by Anderson (2001), in which the background error covariance is multiplied by $(1 + \Delta)$, and the second method is to enhance the analysis error covariance matrix by adding to the diagonal elements random perturbations uniformly distributed between 0 and 1, multiplied by a coefficient μ before performing the time integration. With the Lorenz model it was found for EKF multiplicative inflation alone did not converge. Here, for the EnKF, we multiplied the background ensemble perturbation by $(1 + \delta)$, equivalent to multiplying the background error covariance by $(1 + \delta)^2$.

In the 4-D-Var and EKF formulations for the Lorenz (1963) model, a seemingly minor approximation in the adjoint model of keeping the non-linear model trajectory constant within a single

Table 3. Comparison of the RMS error in perfect model experiments obtained observing x , y and z every eight and every 25 steps, using EnKF with three or six members and optimal inflation factors, and EKF with optimal random and inflation factors (from Yang et al., 2006). The best results obtained with 4-D-Var optimizing *simultaneously* the window length and the background error covariance, are also included. The best results obtained with 3-D-Var are 0.64 and 1.02 for observations every eight and 25 steps, respectively (Yang et al., 2006)

a) Observations and analysis every 8 time steps			
EnKF, 3 Members	EnKF, 6 members	EKF from Yang et al. (2005)	Optimal 4-D-Var (W = Window)
0.30 ($\delta = 0.04$)	0.28 ($\delta = 0.02$)	0.32 ($\mu = 0.02, \delta = 0$)	0.31 (W = 48)
b) Observations and analysis every 25 time steps			
EnKF, 3 members	EnKF, 6 members	EKF from Yang et al. (2005)	Optimal 4-D-Var (W = Window)
0.71 ($\delta = 0.39$)	0.59 ($\delta = 0.13$)	0.63 ($\mu = 0.1, \delta = 0.05$)	0.53 (W = 75)
0.61 (hybrid + $\delta = 0.12$)	0.55 (hybrid, + $\delta = 0.04$)		

time step (without updating it at every substep of the Runge-Kutta time scheme) resulted in a substantial deterioration of about 50% in the analysis errors (Yang et al., 2006). The Runge-Kutta time scheme, which requires 4 estimations of the time derivative per time step, is too expensive to be used in operational applications, so other time schemes such as leap-frog are used, and this particular problem does not appear. However, it is common to make even stronger approximations of the adjoint by either keeping the trajectory constant or interpolating it in time within the adjoint integration. The results with the Lorenz model suggest that any approximation to the exact adjoint can significantly increase the 4-D-Var analysis errors. Since the EnKF method uses non-linear model integrations, it is not affected by this problem, although it still requires the use of variance inflation (Anderson, 2001).

Table 3 shows that if the number of ensemble members K is larger than M , the size of the model, EnKF becomes more accurate than EKF, but for realistically large models we always have $K \ll M$. With a long interval between observations (25 steps) there were short episodes of large analysis errors, so that we found useful to perform a ‘sanity check’ (Miller et al., 1994). Whenever $\|y - H\bar{x}_b\|$ was found to be greater than 5, indicating that forecast errors were growing faster than suggested by EnKF, the background error covariance was taken as the average of the EnKF estimate and $\mathbf{B}_{3-D-Var}$. This simple ‘hybrid’ approach, which increases the size of the background error covariance beyond its EnKF Gaussian estimation when the observational increments are unexpectedly large, had a significant positive impact.

For short observation intervals (8 steps) EnKF and 4-D-Var with long windows and optimal \mathbf{B} give similar optimal results. However, it is striking that with longer intervals (25 steps), the optimal 4-D-Var yields significantly lower errors than those that could be obtained with a full rank EnKF, even using a hybrid system. This is because the KF assumption that forecast perturbations are Gaussian becomes inaccurate when they grow non-linearly (see discussion in Section 4.2). Although for linear perfect models KF and 4-D-Var solve the same problem, for non-linear models the EnKF analysis is still constrained to the error subspace (Fig. 1), whereas 4-D-Var finds iteratively the initial condition for a non-linear forecast that best fits the observations. This advantage of strong-constraint 4-D-Var, which is present even without non-linear observation operators, disappears in the presence of model errors (Section 2.3).

So far we presented tests observing all variables. Table 4 shows results obtained when the observation coverage is reduced by observing only one or two variables. The impact of reduced observations is similar in the 4-D-Var with optimal window length and in the EnKF, but generally 4-D-Var is worse than EnKF even with optimal window length.

2.3. Imperfect model experiments

Handling model errors in data assimilation is a subject of considerable current research (e.g. Dee and DaSilva, 1998; Dee and Todling, 2000; Andersson et al., 2005; Tremolet, 2005; Keppenne et al., 2005; Baek et al., 2006; Danforth et al., 2007;

Table 4. Comparison of EnKF and 4-D-Var with different subsets of variables observed every eight steps (perfect model experiments)

RMS Obs. type)	EnKF (inflation)	4-D-Var (Window = 8)	4-D-Var (Optimal Window ~48)
x	0.82 (.05)	1.10 (0.3 \mathbf{B}_{3-DVAR})	0.84 (0.15 \mathbf{B}_{3-DVAR})
y	0.49 (.02)	0.75 (0.3 \mathbf{B}_{3-DVAR})	0.49 (0.07 \mathbf{B}_{3-DVAR})
z	>5	>5	>5
x, y	0.39 (.03)	0.61 (0.3 \mathbf{B}_{3-DVAR})	0.42 (0.08 \mathbf{B}_{3-DVAR})
x, z	0.41 (.05)	0.77 (0.2 \mathbf{B}_{3-DVAR})	0.44 (0.03 \mathbf{B}_{3-DVAR})
y, z	0.31 (.03)	0.58 (0.2 \mathbf{B}_{3-DVAR})	0.35 (0.04 \mathbf{B}_{3-DVAR})
x, y, z	0.30 (.04)	0.50 (0.3 \mathbf{B}_{3-DVAR})	0.31 (0.04 \mathbf{B}_{3-DVAR})

Table 5. Comparison of EnKF and 4-D-Var with complete observations every eight steps but using an imperfect model (the parameter r is 28 in the nature run and 26 in the forecast model). B is the 3-D-Var background error covariance

		EnKF, 3 ensemble members, no hybrid, 8 steps observations					
Inflation coeff.	0.1	0.2	0.3	0.4	0.5	0.6	0.7
RMS	1.19	0.97	0.89	0.83	0.81	0.81	0.81
		Strong constraint					
4-D-Var	100B	10B	B	0.1B	0.01B		
Win = 8	0.84	0.84	0.84	0.84	0.87		
Win = 16	0.83	0.83	0.84	0.87	0.93		
Win = 24	0.93	0.93	0.93	0.96	0.99		
Win = 32	1.01	1.01	1.01	1.02	1.03		
		Weak constraint					
4-D-Var	Q = 0.001B	Q = 0.005B	Q = 0.01B	Q = 0.05B	Q = 0.1B	Q = 0.5B	
Win = 8	0.84	0.83	0.83	0.87	0.92	1.05	
Win = 16	0.81	0.77	0.75	0.81	0.87	1.00	
Win = 24	0.87	0.76	0.73	0.79	0.84	0.93	
Win = 32	0.91	0.75	0.71	0.77	0.80	0.90	

Whitaker et al., 2007). In the final set of experiments with the Lorenz (1963) model, we allowed for an imperfect forecast model, by reducing the parameter r from 28 in the nature run used to create the observations, to $r = 26$ in the forecast model. This increases the forecast errors by an order of magnitude, and the optimal 3-D-Var background error covariance is two orders of magnitude larger.

In order to account for model errors, in the 4-D-Var experiments we used a weak constraint approach as in Tremolet (2005), modifying the cost function (1) by including a model bias β assumed to be constant within the assimilation window:

$$J(\mathbf{x}_0, \beta) = \frac{1}{2}(\mathbf{x}_0 - \mathbf{x}_0^b)^T \mathbf{B}^{-1}(\mathbf{x}_0 - \mathbf{x}_0^b) + \frac{1}{2} \sum_{i=0}^N [H_i(\mathbf{x}_i + \beta) - \mathbf{y}_i]^T \mathbf{R}_i^{-1} [H_i(\mathbf{x}_i + \beta) - \mathbf{y}_i] + \frac{1}{2} \beta^T \mathbf{Q}^{-1} \beta = J^b + J^o + J^\beta \quad (8)$$

The bias β shifts the trajectory so that $H(\mathbf{x}_i + \beta)$ best fits the observations within each assimilation window. We tuned the amplitude of \mathbf{Q} , the bias error covariance, by making it proportional to the background error covariance, although this may not be optimal (Tremolet, 2005).

Several different approaches have been suggested to deal with model errors within EnKF. The simplest is to increase the multiplicative inflation (Anderson, 2001), which reduces the weight given to the imperfect model compared to the observations. Additive inflation was found to be more effective than multiplicative inflation by Whitaker et al. (2007). Baek et al. (2006) showed how to correct constant model error by augmenting the model state with the model bias, and Danforth et al. (2007) proposed a low order approach to estimate bias, diurnal and seasonal errors, and state dependent model errors. Li et al. (2007) compared these methods on the SPEEDY model. For simplicity, in the experiments presented here we only tested increasing the EnKF

multiplicative inflation discussed in Section 1.2 beyond the value needed in a perfect model.

Table 5 (with observations every eight steps) shows that the RMS analysis error of the EnKF in the presence of model errors becomes quite large (1.19), but that increasing inflation, although not optimal, reduces the errors substantially (to 0.81). With model errors, strong constraint 4-D-Var becomes less sensitive to the background error covariance and increasing the window only reduces the error very slightly, from 0.84 to 0.83, confirming that model errors strongly limit the length of the assimilation window of the 4-D-Var (Schröter et al., 1993). The introduction of a model bias in the cost function as in (8) has little effect for short windows but improves substantially the results for long assimilation windows, reducing the RMS error to 0.71 when \mathbf{Q} is optimally tuned. Note that with the long assimilation window, more observations are available to better define the unbiased increment $y - h(x_i + \beta)$, and the 4-D-Var results show the benefits after the model trajectory is corrected with β . In EnKF there is only one set of observation to estimate the best analysis state, and multiplicative inflation is not optimal to deal with a state-dependent bias like this. Despite its simplicity, the inflation method results are an improvement, but a more sophisticated strategy that accounts for model error based on recent training would be expected to further improve the results.

Table 6 (with observations every 25 steps) indicates that for infrequent observations, EnKF with inflation alone gives RMS errors similar to those of strong constraint 4-D-Var, about 1.04. Increasing the number of ensemble members in EnKF or using weak constraint with 4-D-Var improves their results to similar levels, and there is no advantage to windows longer than 50.

In summary, the three methods are able to reach similar levels of accuracy for the very non-linear Lorenz (1963) system, but each of them requires considerable tuning and empirical techniques, such as ‘sanity checks’ and inflation for the Kalman

Table 6. As Table 5, but with observations every 25 steps

		EnKF, 3 ensemble members, no hybrid, 25 steps observations					
Inflation coeff.	0.1	0.2	0.5	0.7	0.9	0.97	1.0
RMS	2.84	2.02	1.26	1.13	1.07	1.04	1.06
		EnKF, 6 ensemble members, no hybrid, 25 steps observations					
Inflation coeff.	0.1	0.2	0.5	0.7	0.9	0.98	1.0
RMS	1.61	1.16	0.99	0.96	0.95	0.95	0.95
		Strong constraint					
4-D-Var	No Jb	100B _{3-DV}	10B _{3-DV}	5B _{3-DV}	B _{3-DV}	0.3B _{3-DV}	0.1B _{3-DV}
Win = 25	1.04	1.04	1.05	1.06	1.08	1.08	1.07
Win = 50	1.17	1.17	1.16	1.16	1.16	1.17	1.20
Win = 75	1.26	1.22	1.27	1.36	1.38	1.29	1.70
Win = 100	1.47	1.48	1.56	1.50	1.59	1.54	1.64
		Weak constraint					
4-D-Var	Q = 0.001B	Q = 0.005B	Q = 0.01B	Q = 0.05B	Q = 0.1B	Q = 0.5B	
Win = 25	1.01	0.93	0.91	0.96	1.02	1.15	
Win = 50	1.11	0.97	0.91	0.98	1.03	1.09	
Win = 75	1.17	1.05	1.00	1.04	1.13	1.19	
Win = 100	1.31	1.06	1.03	1.15	1.20	1.35	

Filter, and optimization of \mathbf{B} and long windows with the QVA approach for 4-D-Var, without which the results are significantly worse. In the presence of model errors, weak constraint for 4-D-Var is somewhat more effective than simple multiplicative inflation in EnKF. We found that EnKF was the easiest method to implement even for the Lorenz (1963) model, because EKF and 4-D-Var required the computation of the linear tangent and adjoint models using the non-linear model corresponding to each substep of the Runge-Kutta time integration, and because 4-D-Var required the estimation of the background error covariance.

3. Comparisons of EnKF, 3-D-Var and 4-D-Var in QG and PE models

3.1. Quasi-geostrophic channel model

We now present comparisons of 3-D-Var (developed by Morss et al., 2001), 4-D-Var and LETKF, using the Rotunno and Bao (1996) quasi-geostrophic channel model in a perfect model set-up. We found that for this model multiplicative inflation alone is not enough to prevent filter divergence. Instead, as in Corazza et al. (2002, 2007), random perturbations are added after the analysis with a standard deviation of 5% of the natural variability of the model. For optimal 4-D-Var results, the background error covariance \mathbf{B} had to be tuned as discussed in the previous Section, with an optimal value of about $0.02\mathbf{B}_{3-DV}$.

With simulated rawinsonde observations every 12 hr, Fig. 2 shows that the LETKF is more accurate than 4-D-Var with 12 hr windows, and comparable with 4-D-Var with a 24 hr window. The advantage that 4-D-Var has for longer windows (48 hr) is analogous to that observed with the three-variable perfect Lorenz model. As with the Lorenz model, seemingly minor

approximations of the adjoint model were found to result in a significant deterioration of the 4-D-Var results. As noted before with the Lorenz model, and in Section 3.2, the difference in performance between 3-D-Var and the more advanced methods, is much larger in perfect model simulations than in real operational applications, where the presence of model error is more important than effects such as parameter optimization and the accuracy of the adjoint.

These computations were performed on a single processor Alpha EV6/7 617MHz computer, with the following wall clock timings for 200 d of simulated data assimilation: 3-D-Var—0.5 hr, LETKF—3 hr, 4-D-Var (12 hr window)—8 hr, 4-D-Var (48 hr window)—11.2 hr. These estimates of the computational requirements are not representative of the relative computational costs that would be attainable in an operational set up with optimized parallelization, since the LETKF is designed to be particularly efficient in massively parallel computers (Hunt et al., 2007).

3.2. Global Primitive Equations model (SPEEDY)

In this subsection we discuss several results obtained by Miyoshi (2005) who developed and tested 3-D-Var, the EnSRF approach of Whitaker and Hamill (2002), and the LEKF of Ott et al., 2004 using the SPEEDY global primitive equations model of Molteni (2003). The SPEEDY model has a horizontal spectral resolution of T30 with seven vertical levels and a simple but fairly complete parametrization of physical processes, which result in a realistic simulation of the atmospheric climatology. Miyoshi, 2005 first performed 'perfect model' simulations, and then created realistic atmospheric 'soundings' by sampling the NCEP-NCAR Reanalysis (Kistler et al., 2001).

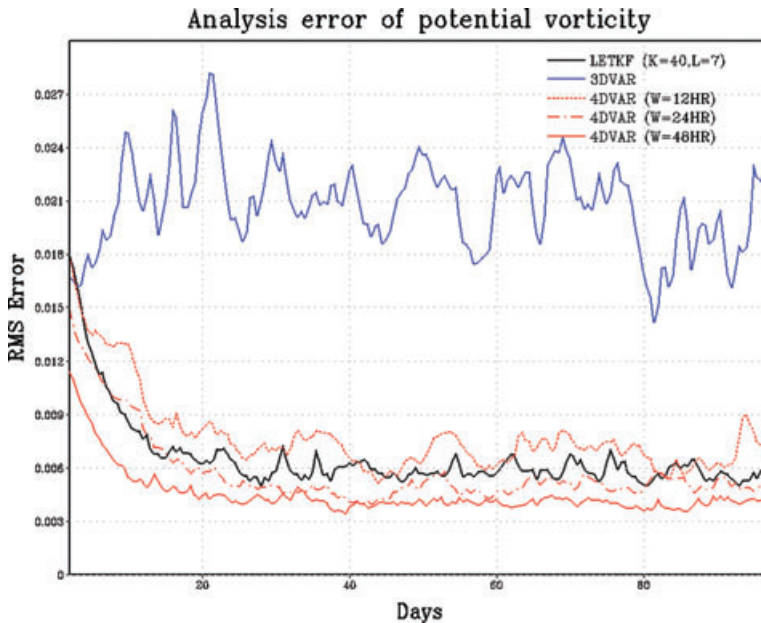


Fig. 2. Analysis error in potential vorticity for 100 d of data assimilation using rawinsondes with a 3% observational density randomly distributed in the model domain. All the data assimilation systems, 3-D-Var, LETKF (with 30 ensemble members, local volumes of 9×9 horizontal grid points and the full vertical column, and random perturbations of 5% size compared to the natural variability added to the model variables after the analysis), and 4-D-Var (12, 24 and 48 hr windows) have been optimized. All the experiments are based on a perfect model simulation.

3.2.1. Observation localization. It is well known (e.g. Lorenc, 2003), that the main disadvantage of EnKF is that the use of a limited ($K \sim 100$) number of ensemble members inevitably introduces sampling errors in the background error covariance \mathbf{B} , especially at long distances. Several Ensemble Kalman Filters now incorporate a *localization* of the background error covariance (Houtekamer and Mitchell, 2001) to handle this problem by multiplying each term in \mathbf{B} by a Gaussian shaped correlation that depends on the distance between points (a Schur product suggested by Gaspari and Cohn, 1999). This approach, easy to implement on systems that assimilate observations *serially* (Tippett et al., 2003) has been found to improve the performance of the assimilation. In the LEKF/LETKF spurious long distance correlation of errors due to sampling are avoided by the use of a region of influence (a local volume), beyond which the correlations are assumed to be zero, so that the localization has a top-hat and not a Gaussian shape. Miyoshi (2005) found that the LEKF performed slightly worse than EnSRF using a Gaussian localization of \mathbf{B} . Since in the LEKF it is not possible to efficiently localize \mathbf{B} with a Schur product, Miyoshi, following a suggestion of Hunt (2005), multiplied instead *the observation error covariance \mathbf{R} by the inverse of the same Gaussian*, thus increasing the observational error of observations far away from the grid point. This has an effect similar to the localization of \mathbf{B} and it was found that with this ‘observation localization’ the performance of the LEKF became as good as that of the EnSRF. Whitaker et al. (2007) obtained similar results when comparing EnSRF and LETKF with observation localization.

3.2.2. Model errors. With identical twin experiments (observations derived from a ‘nature’ run made with the same model as the forecasts), Miyoshi (2005) obtained EnKF RMS analysis errors much lower than those obtained with an optimized 3-D-Var.

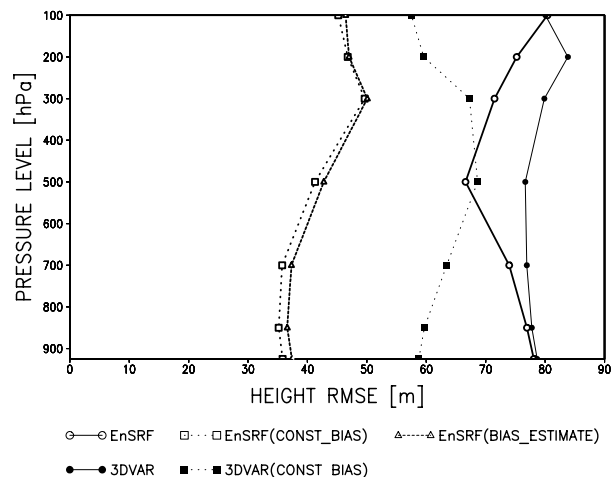


Fig. 3. Analysis geopotential height RMS errors versus pressure (hPa) in the SPEEDY model using realistic (reanalysis) observations, either neglecting the presence of model errors (full lines) or correcting them using a constant bias estimation obtained from the time average of 3-D-Var analysis increments (dotted lines). The closed circles and squares correspond to 3-D-Var, and the open circles and squares to EnKF. The line with triangles corresponds to a bias correction in which the amplitude of the bias is estimated at each EnKF analysis step.

However, when using atmospheric ‘soundings’ derived from the NCEP Reanalysis, the advantage of EnKF with respect to 3-D-Var became considerably smaller (Fig. 3, full lines). An attempt to apply the method of Dee and da Silva (1998) at full resolution to correct for model bias led to filter divergence because of sampling problems. Following Danforth et al. (2007), 6-hr model errors including the time average and leading EOFs representing

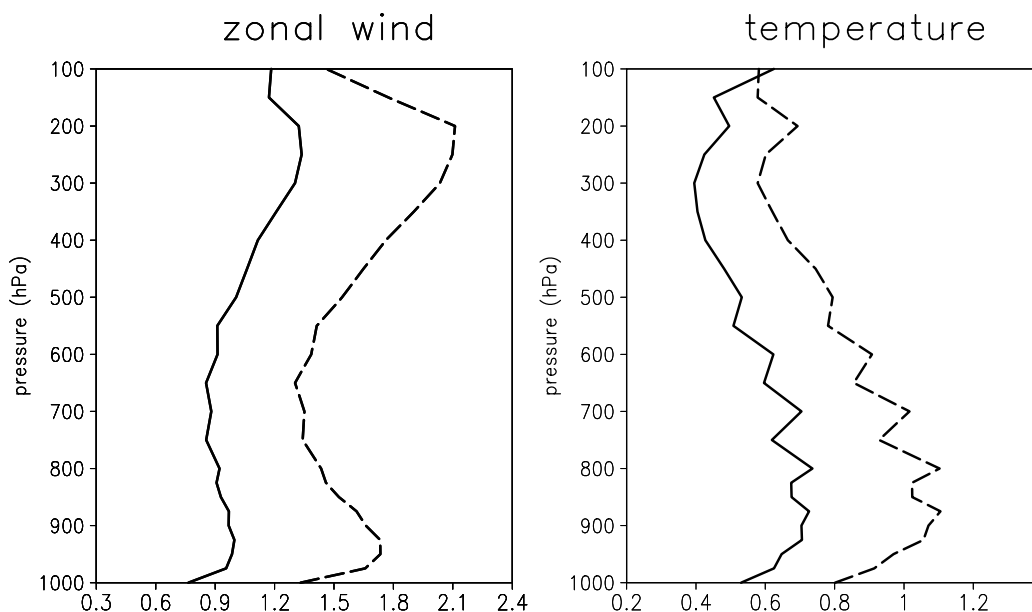


Fig. 4. Comparison of the globally averaged RMS analysis errors for the zonal wind (left, m s^{-1}) and temperature (right, K) using PSAS (a 3-D-Var scheme, dashed line) and the LETKF (solid line) on a finite volume GCM. The same observations (geopotential heights and winds from simulated rawinsondes) are used by both systems. Adapted from Liu et al. (2007).

the errors associated with the diurnal cycle were first estimated. The Dee and da Silva (1998) method was then used to estimate the time evolving *amplitude* of these error fields, thus reducing by many orders of magnitude the sampling problem.

Figure 3 compares the geopotential height analysis errors for both 3-D-Var and EnKF, with (dashed lines) and without (full lines) bias correction. Without bias correction, the EnKF (open circles) is only marginally better than 3-D-Var (closed circles). With bias correction the EnKF (open squares) has a substantial advantage over 3-D-Var (closed squares). Estimating the amplitude of the bias correction within EnKF (full line with triangles) does not improve the results further. Miyoshi (2005) also found that assimilating Reanalysis moisture soundings improved not only the moisture, but the winds and temperature analysis as well, whereas humidity information is generally known to have a low impact on the analysis of other large-scale variables in 3-D-Var (Bengtsson and Hodges, 2005). This indicates that EnKF provided ‘tracer’ information to the analysis, since perfect model simulations confirmed that the improvement observed in winds and temperature analysis when assimilating humidity was not due to a reduction of the model bias.

3.3. Recent LETKF experiments with global operational models

Szunyogh et al. (2005) implemented the LEKF on the NCEP Global Forecasting System (GFS) model at T62/L28 resolution in a perfect model set-up, with very accurate analyses. It was found that, even with a very small number of observa-

tions, the LEKF was able to accurately analyse a gravity wave present in the nature run. This suggests that the localization of the LEKF/LETKF is apparently able to maintain well the atmospheric balance. Szunyogh et al. (2007) have tested the assimilation of real observations with encouraging results. Liu et al. (2007) coupled the LETKF with 40 ensemble members on a version of the NASA finite volume GCM (fvGCM) and compared the results of assimilating simulated rawinsonde observations with those obtained using the NASA operational PSAS, a form of 3-D-Var computed in observational space (Cohn et al., 1998). Figure 4, adapted from their study, shows that the globally averaged LETKF analysis errors were about 30–50% smaller than those of PSAS.

Miyoshi and Yamane (2007) implemented the LETKF on the Atmospheric GCM for the Earth Simulator (AFES) in Japan with a resolution of T159/L48. Figure 5, adapted from their study for a perfect model scenario, shows that after a single LETKF analysis step, the analysis error decreases with increasing ensemble size, (and saturates at about 320 members, not shown). After 10 days of data assimilation with LETKF, the saturation with respect to the number of ensemble members is faster, taking place at about 80 members, and there is less dependence on the number of ensemble members than on whether variance inflation is used or not. Figure 6 presents 1 month of global RMS analysis errors for the surface pressure, and confirms that with 80 ensemble members the error is close to saturation. Ratios of the analysis error and the analysis spread (not shown) were very close to 1, as were the corresponding ratios for the forecasts, suggesting that the system is behaving as expected. Tests comparing the current JMA

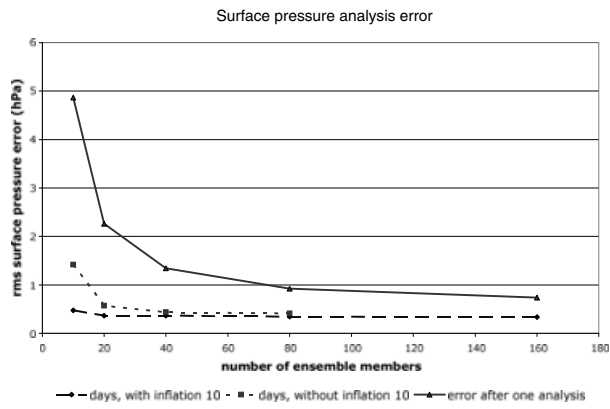


Fig. 5. Dependence on the number of LETKF ensemble members of the surface pressure RMS analysis error with the AFES model in a perfect model simulation on the Earth Simulator. Solid line: after a single analysis step; short dashes: analysis errors after 10 d, without using forecast error covariance inflation; long dashes: analysis errors after 10 d, with forecast error covariance inflation (adapted from experiments by Miyoshi and Yamane, 2007).

4-D-Var with a 100 members LETKF ensemble assimilating the operational observations for August 2004 indicated their results were indistinguishable in the NH and 4-D-Var was slightly better in the SH.

At the time of this writing, comparisons have been carried out with the NCEP GFS model at T62/L28, using NCEP operational 3-D-Var (Spectral Statistical Interpolation, SSI, Parrish and Derber, 1992), EnSRF and LETKF, assimilating all operational non-radiance observations. Results (Whitaker et al., 2007; Szunyogh et al., 2007) indicate that the EnKF are similar to each other and superior to the SSI. With the assimilation of radiances LETKF was still superior to SSI but the gap between the two methods was reduced (Whitaker, 2007, personal communication).

4. Summary and discussion

As indicated in the introduction, EnKF is a relatively young area of research in data assimilation, and until recently there was no clear evidence that it could outperform an operational 3-D-Var analysis, let alone 4-D-Var. Whitaker et al. (2007) reporting on a comparison between 3-D-Var and EnKF organized by NCEP have recently shown for the first time that at the resolution of T62/L28 and using the observations operationally available at NCEP (except for satellite radiances), their EnSRF and the LETKF yield better forecasts than the operational 3-D-Var using the same observations. Szunyogh et al. (2007) obtained similar results. Houtekamer et al. (personal communication, 2006)

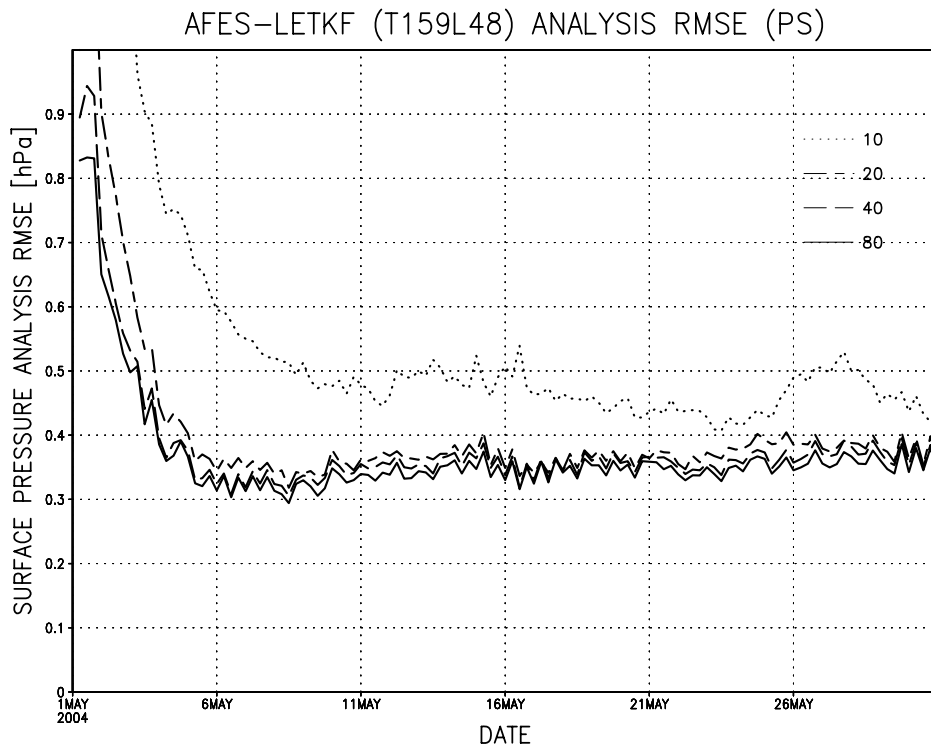


Fig. 6. One-month time evolution of the LETKF/AFES analysis error for the surface pressure with 10, 20, 40 and 80 ensemble members, in a perfect model simulation using a T159/L48 model (adapted from Miyoshi and Yamane, 2007).

implemented a few changes in the Canadian perturbed observations EnKF (including increasing resolution, assimilating observations at their right time, and adding the perturbations representing model errors after the analysis rather than after the forecast) that resulted in an improved performance that became comparable to the operational 4-D-Var.

4.1. Efficiency

When the number of observations is low (e.g. without satellite data), the serial EnSRF approaches are the most efficient, but they become less efficient when using large numbers of satellite observations. The LEKF/LETKF methods handle this problem by assimilating simultaneously all the observations within a local volume surrounding each grid point. Perfect model simulation experiments suggest that the number of ensemble members needed to estimate the background error covariance using a high resolution global model may be less than 100, that is, comparable to the ensemble size already used in operational ensemble forecasting. The four-dimensional extension (Hunt et al., 2004) provides EnKF with one of the major advantages of 4-D-Var, namely the ability to assimilate asynchronous observations at the right time (but without the need to perform iterations). With a perfect model simulation the results of Szunyogh et al. (2005) suggest that the volume localization around each grid point does not affect the balance of the analysis, to the extent that the analysis is able to reproduce very well not only the balanced solution, but also gravity waves present in the integration used as ‘truth’. The wall-clock timings obtained with LETKF and most observations has been found to be of the order of 5 min both with 40 T62/L28 ensemble members on a cluster of 25 dual processor PCs, and with 80 T159/L48 ensemble members using 80 processors on the Earth Simulator.

In principle, EnKF should be able to assimilate time-integrated observations, such as accumulated rain. Previous experience with assimilation of rain using nudging indicates that the impact of precipitation information tends to be ‘forgotten’ soon after the end of the assimilation, presumably because the potential vorticity was not modified during the assimilation of precipitation (e.g. Davolio and Buzzi, 2004). Within EnKF the assimilation of precipitation may have a longer lasting impact because dynamical variables, such as potential vorticity, are modified during the analysis, which is a linear combination of the ensemble members (Fig. 1), so that an ensemble member that reproduces better the accumulated rain will receive a larger analysis weight. On the other hand, assimilation of rain within EnKF may suffer from the fact that the rain perturbations are very far from Gaussian (Lorenz, 2003), and may require the use of the Maximum Likelihood Ensemble Forecasting approach (Zupanski, 2005).

4.2. Model errors and non-linearity

Because until recently there were no examples of EnKF outperforming 3-D-Var when using real observations, it has been generally assumed that EnKF is much more sensitive than 3-D-Var or 4-D-Var to the problem of model errors. However, recent results from Miyoshi (2005) and Whitaker et al. (2007) suggest that when the model errors are addressed even with simple approaches, the advantages of EnKF with respect to 3-D-Var become apparent. These results agree with those in Section 2, where we found that in the presence of model errors EnKF with strong inflation gave analysis errors similar to those obtained with strong constraint 4-D-Var with a short window, but that weak constraint 4-D-Var further reduces analysis errors. Whitaker et al. (2007) found that additive inflation outperformed multiplicative inflation in their system, so that their EnSRF with the T62L28 version of the NCEP GFS yielded better scores in the northern and southern extratropics as well as in the tropics. Houtekamer (2006, personal communication) found that adding random perturbations representing model errors to the analysis, so that these perturbations evolve dynamically during the 6-hr forecast, improved their results. With a QG model we also found that additive inflation after the analysis is better than multiplicative inflation (Section 3.1). Inflation through random perturbations added before the model integration is apparently advantageous because it allows the ensemble to explore unstable directions that lie outside the analysis subspace and thus to overcome the tendency of the unperturbed ensemble to collapse towards the dominant unstable directions already included in the ensemble. Multiplicative inflation, by contrast, does not change the ensemble subspace. The low-order approach of Danforth et al. (2007) may also be advantageous to correct not only biases but also state-dependent model errors.

Currently there is also considerable interest in the development of 4-D-Var with *weak model constraint*, that is, allowing for model errors. Tremolet (2005) obtained very encouraging preliminary results, and further comparisons between 4-D-Var and EnKF will be required when these weak constraint systems are implemented.

Although EnKF does not require linearization of the model, it is still based on the hypothesis that perturbations evolve linearly, so that initial Gaussian perturbations (i.e. perturbations completely represented by their mean and covariance) remain Gaussian within the assimilation time window. It was shown in Section 2.2 that the non-linear growth of perturbations has a negative impact on EnKF because the Gaussian assumption is violated if the model is very non-linear or the analysis time window too long (e.g. in the Lorenz 63 model when the analysis is performed every 25 time steps). In global atmospheric analysis cycles, this assumption is still accurate for synoptic-scale perturbations since they grow essentially linearly over 6 hr. However, a data assimilation system designed to capture faster

Table 7. Adaptation of the table of advantages and disadvantages of EnKF and 4-D-Var (Lorenc, 2003). Parentheses indicate disadvantages, square brackets indicate clarifications and italics indicate added comments

Advantages (disadvantages) of EnKF

Simple to design and code.

Does not need a smooth forecast model [i.e. model parametrizations can be discontinuous].

Does not need perturbation [linear tangent] forecast and adjoint models.

Generates [optimal] ensemble [initial perturbations that represent the analysis error covariance].

Complex observation operators, for example rain, coped with automatically, but sample is then fitted with a Gaussian.

Non-linear observation operators are possible within EnKF, for example, MLEF.

Covariances evolved indefinitely (only if represented in ensemble)

Underrepresentation should be helped by 'refreshing' the ensemble.

(Sampled covariance is noisy) and (can only fit N data)

Localization reduces the problem of long-distance sampling of the 'covariance of the day' and increases the ability to fit many observations.

Observation localization can be used with local filters.

Advantages (disadvantages) of 4-D-Var

[Can assimilate asynchronous observations]

4-D-EnKF can also do it without the need for iterations. It can also assimilate time integrated observations such as accumulated rain.

Can extract information from tracers

4-D-EnKF should do it just as well

Non-linear observation operators and non-Gaussian errors [can be] modelled

Maximum Likelihood Ensemble Filter allows for the use of non-linear operators and non-Gaussian errors can also be modelled.

Incremental 4-D-Var balance easy.

In EnKF balance is achieved without initialization for perfect models. For real observations, digital filtering may be needed.

Accurate modelling of time-covariances (but only within the 4-D-Var window)

Only if the background error covariance (not provided by 4-D-Var) includes the errors of the day, or if the assimilation window is long.

processes like severe storms would require more frequent analysis cycles.

As for non-linear observation operators, the computation of differences between non-linear states in observation space (Section 2.2) avoids the explicit need for the Jacobian or adjoint of the observation operators, but the computation is still linearly approximated. The approach of Maximum Likelihood Ensemble Filter (MLEF), introduced by Zupanski (2005) is based on the minimization of a cost function allowing for non-linear observation operators (as in 4-D-Var) but solving it within the space spanned by the ensemble forecasts. This avoids the linearization of the observation operators while making the minimization problem better conditioned than in 4-D-Var so that typically only 2–3 iterations are needed.

4.3. Relative advantages and disadvantages

In summary, the main advantages of EnKF are that: (i) it is simple to implement and model independent; (ii) it automatically filters out, through non-linear saturation, fast processes such as convection that, if exactly linearized, would dominate error growth and (iii) it provides optimal initial ensemble perturbations, for a given ensemble size, because they represent the analysis error covariance (Ehrendorfer and Tribbia, 1997). Since the number of ensemble members required is similar to that used for ensemble prediction, the cost of the 6-hr ensemble integration is covered

by its use in longer ensemble predictions. The main disadvantage of EnKF is the low dimensionality of the ensemble, which introduces sampling errors in the estimation of the background error covariance. The background covariance localization solves this problem in EnKF when observations are assimilated serially. Although this is not computationally feasible in local EnKF methods able to handle many observations simultaneously like the LETKF, an equivalent approach is a simple 'observation localization' where the observations error covariance is increased for observations far from the grid point being analyzed (Miyoshi, 2005; Hunt et al., 2007).

The main advantages of 4-D-Var are its ability to assimilate asynchronous observations, (like 4-D-EnKF) and the fact that, when using a long enough window, its performance converges to that of full rank EKF. Fisher et al. (2005) has shown that long-window 4-D-Var with model error is equivalent to a Kalman smoother where the initial guesses for the state and forecast error covariance are 'forgotten'. He argues that the approach of long overlapping windows and weak constraint should be advantageous compared to EnKF, because the latter is severely rank-reduced. An additional advantage of 4-D-Var is that it allows for the assimilation of observations with serially-correlated errors by including such time correlations in \mathbf{R} . Järvinen et al. (1999) showed that this correlation results in less weight given to the mean of the observations (if biased) and more weight to their time evolution. However, this time correlation can also be

included within the 4-D-EnKF formulation. The main disadvantage of 4-D-Var is that it requires the development and maintenance of the adjoint model, including special consideration of how to represent fast processes (such as convection) that become non-linear and quickly saturate in the non-linear model. Both methods require additional development of advanced approaches to the treatment of model errors, including weak constraint for 4-D-Var and efficient estimates of state-dependent bias in EnKF. Like 4-D-Var, EnKF has a few tuning ‘handles’ that need to be explored, including the number of ensemble members, the strength and characteristics of the covariance localization, the handling of model errors, the use of multiplicative or additive inflation, and its adaptive estimation using observational increments. In the next few years more experiments with real observations will build up the EnKF experience needed for operational implementation. Fortunately, because the problems solved in EnKF and 4-D-Var are very closely related, researchers can take advantage and share advances made in either method.

We conclude the paper by adapting and updating in Table 7 a very useful table of advantages and disadvantages from Lorenc (2003), with additions [in brackets] and comments (*in italics*).

5. Acknowledgments

We are very grateful to our colleagues from the Chaos/Weather group at the University of Maryland, including Profs. B. Hunt, E. Kostelich, E. Ott, I. Szunyogh, J. Yorke, and current and former students, including M. Corazza, C. Danforth, E. Fertig, J. Harlim, J. Liu, D.J. Patil, who had a strong influence on this research. B. Hunt suggested the observation localization method, and F. Molteni provided the SPEEDY model. The review and suggestions of Olivier Talagrand significantly improved the original draft of the paper, as well as comments from Herschel Mitchell. We have incorporated detailed corrections suggested by Nils Gustafsson, although we respond separately to his very stimulating and valid comments. The careful and detailed reviews of Erik Andersson and an anonymous reviewer significantly improved the paper. This research was partially supported by NSF ATM9328402, NASA NNG04GK29G and NNG04GK78A and NOAA NA04OR4310103.

References

- Anderson, J. L., 2001. An ensemble adjustment Kalman filter for data assimilation. *Mon. Wea. Rev.* **129**, 2884–2903.
- Andersson, E., Fisher, M., Holm, E., Isaksen, L., Radnoti, G. and co-authors. 2005. Will the 4D-Var approach be defeated by nonlinearity? ECMWF Tech Memo 479. Available at: www.ecmwf.int/publications.
- Baek, S.-J., Hunt, B. R., Kalnay, E., Ott, E. and Szunyogh, I., 2006. Local ensemble Kalman filtering in the presence of model bias. *Tellus* **58**, 293–306.
- Bengtsson, L. and Hodges, K. I., 2005. On the impact of humidity observations in numerical weather prediction. *Tellus* **57A**, 701–708.
- Bishop, C. H., Etherton, B. J. and Majumdar, S. J., 2001. Adaptive sampling with ensemble transform Kalman filter. Part I: theoretical aspects. *Mon. Wea. Rev.* **129**, 420–436.
- Burgers, G., van Leeuwen, P. J. and Evensen, G., 1998. On the analysis scheme in the ensemble Kalman filter. *Mon. Wea. Rev.* **126**, 1719–1724.
- Cohn, S., Da Silva, A., Guo, J., Sienkiewicz, M. and Lamich, D., 1998. Assessing the effects of data selection with the DAO physical-space statistical analysis system. *Mon. Wea. Rev.* **126**, 2913–2926.
- Corazza, M., Kalnay, E., Patil, D. J., Ott, E., Yorke, J. A. and co-authors. 2002. Use of the breeding technique in the estimation of the background error covariance matrix for a quasi-geostrophic model. Paper 6.4 in the AMS Symposium on Observations, Data Assimilation and Probabilistic Prediction, Orlando, FA, January 14–17 2002. Available at: ams.confex.com/ams/pdfpapers/28755.pdf.
- Corazza, M., Kalnay, E., Patil, D. J., Yang, S.-C., Morss, R. and co-authors. 2003. Use of the breeding technique to estimate the structure of the analysis “error of the day”. *Nonlinear Processes in Geophysics* **10**, 233–243.
- Corazza, M., Kalnay, E. and Yang, S.-C., 2007. An implementation of the local ensemble Kalman filter in a quasigeostrophic model and comparison with 3D-Var. *Nonlinear Proc. Phys.* **14**, 89–101.
- Danforth, C. M., Kalnay, E. and Miyoshi, T. 2007. Estimating and correcting global weather model error. *Mon. Wea. Rev.* **134**, 281–299.
- Davolio, S. and A. Buzzi., 2004. A nudging scheme for the assimilation of precipitation data into a mesoscale model. *Weather and Forecasting* **19**(5), 855–871.
- Dee, D. P. and da Silva, A. M., 1998. Data assimilation in the presence of forecast bias. *Quart. J. Raoy. Meteor. Soc.* **126**, 269–295.
- Dee, D. P. and Todling, R., 2000. Data assimilation in the presence of forecast bias: the GEOS moisture analysis. *Mon. Wea. Rev.* **128**, 3268–3282.
- De Ponca, M. S. F. V., Purser, R. J., Parrish, D. F. and Derber, J. C., 2006. Comparison of strategies for the specification of anisotropies in the covariances of a three-dimensional atmospheric data assimilation system, NOAA/NCEP Office Note 452, 13 pp. Available at: www.emc.ncep.noaa.gov/officenotes/newernotes/on452.pdf.
- Derber, J., Puser, R., Wu, W.-S., Treadon, R., Ponca, M. and co-authors. 2003. Flow-dependent Jb in grid-point 3D-Var. Available at: http://www.ecmwf.int/publications/library/ecpublications/_pdf/seminar/2003/sem2003_derber.pdf
- Ehrendorfer, M. and Tribbia, J., 1997. Optimal prediction of forecast error covariances through singular vectors. *J. Atmos. Sci.* **54**, 286–313.
- Evensen, G., 1994. Sequential data assimilation with a nonlinear quasi-geostrophic model using Monte Carlo methods to forecast error statistics. *J. Geophys. Res.* **99**(C5), 10 143–10 162.
- Evensen, G. and van Leeuwen, P. J., 1996. Assimilation of Geosat altimeter data for the Aghulas current using the ensemble Kalman Filter with a quasi-geostrophic model. *Mon. Wea. Rev.* **124**, 85–96.
- Evensen, G., 1997. Advanced data assimilation for strongly nonlinear dynamics. *Mon. Wea. Rev.* **125**, 1342–1354.
- Evensen, G., 2003. The ensemble Kalman filter: theoretical formulation and practical implementation. *Ocen. Dyn.* **53**, 343–367.

- Fertig, E., Harlim, J. and Hunt, B., 2007a. A comparative study of 4D-Var and 4D ensemble Kalman filter: perfect model simulations with lorenz-96. *Tellus* **59**, 96–101.
- Fertig, E., Hunt, B., Ott, E. and Szunyogh, I., 2007b. Assimilating nonlocal observations with a local ensemble Kalman Filter. *Tellus*, in press.
- Fisher, M. and Hollingsworth, A., 2004. Evaluation of reduced rank Kalman filters. Paper J1.10 of AMS 16th Conference on Numerical Weather Prediction, 84th AMS Annual Meeting, Seattle, Wash, January 12–15 2004. Available at: ams.confex.com/ams/84Annual/techprogram/paper_74522.htm
- Fisher, M., Leutbecher, M. and Kelly, G., 2005. On the equivalence between Kalman smoothing and weak-constraint four-dimensional variational data assimilation. *Q. J. R. Meteorol. Soc.* **131**, 3235–3246.
- Gaspari, G. and Cohn, S. E., 1999. Construction of correlation functions in two and three dimensions. *Quart. J. Roy. Meteor. Soc.* **125**, 723–757.
- Houtekamer, P. L. and Mitchell, H. L., 1998. Data assimilation using an ensemble Kalman filter technique. *Mon. Wea. Rev.* **126**, 796–811.
- Houtekamer, P. L. and Mitchell, H. L., 2001. A sequential ensemble Kalman filter for atmospheric data assimilation. *Mon. Wea. Rev.* **129**, 123–137.
- Houtekamer, P. L., Mitchell, H. L., Pellerin, G., Buehner, M., Charron, M. and co-authors. 2005. Atmospheric data assimilation with an ensemble Kalman filter: results with real observations. *Mon. Wea. Rev.* **133**, 604–620.
- Houtekamer, P. L. and Mitchell, H. L., 2005. Ensemble Kalman filtering. *Q. J. Roy. Meteor. Soc.* **131**, 3269–3290.
- Hunt, B. R., 2005. An efficient implementation of the local ensemble Kalman filter. Available at: <http://arxiv.org/abs/physics/0511236>.
- Hunt, B. R., Kalnay, E., Kostelich, E. J., Ott, E., Patil, D. J. and co-authors. 2004. Four-dimensional ensemble Kalman filtering. *Tellus*, **56A**, 273–277.
- Hunt, B. R., Kostelich, E. J. and Szunyogh, I., 2007. Efficient data assimilation for spatiotemporal chaos: a local ensemble transform Kalman filter. *Physica D*, **230**, 112–126.
- Ide, K., Courtier, P., Ghil, M. and Lorenc, A., 1997. Unified notation for data assimilation: operational, sequential and variational. *J. Meteor. Soc. Jpn.* **75**, 181–189.
- Järvinen, H., Andersson, E. and Bouttier, F., 1999. Variational assimilation of time sequences of surface observations with serially correlated errors. *Tellus* **51A**, 469–488.
- Kalnay, E., 2003. *Atmospheric Modeling, Data Assimilation and Predictability*. Cambridge University Press, Cambridge, 341 pp.
- Keppenne, C. and Rienecker, H., 2002. Initial testing of a massively parallel ensemble Kalman filter with the Poseidon isopycnal ocean general circulation model. *Mon. Wea. Rev.* **130**, 2951–2965.
- Keppenne, C., Rienecker, M., Kurkowski, N. and Adamec, D., 2005. Ensemble Kalman Filter assimilation of temperature and altimeter data with bias correction and application to seasonal prediction. *Nonlinear Proc. Geophys.* **12**, 491–503.
- Kistler, R., Kalnay, E., Collins, W., Saha, S., White, G. and co-authors. 2001. The NCEP-NCAR 50-year reanalysis: monthly means CD-ROM and documentation. *Bull. Amer. Meteor. Soc.* **82**(2), 247–267.
- Lawson, W. G. and Hansen, J. A., 2004. Implications of stochastic and deterministic filters as ensemble-based data assimilation methods in varying regimes of error growth. *Mon. Wea. Rev.* **132**, 1966–1981.
- Li, Hong, Kalnay, E., Miyoshi, T. and Danforth, C., 2007. Ensemble Kalman Filter in the presence of model errors. Available at: <http://ams.confex.com/ams/pdfpapers/120175.pdf>
- Liu, J., Fertig, E., Li, H., Kalnay, E., Hunt, B. and co-authors. 2007. Comparison between local ensemble transform Kalman filter and PSAS in the NASA finite volume GCM: perfect model experiments. Available at: <http://arxiv.org/ftp/physics/papers/0703/0703066.pdf>.
- Lorenc, A. C., 2003. The potential of the ensemble Kalman filter for NWP – a comparison with 4D-Var. *Quart. J. Roy. Meteor. Soc.* **129**, 3183–3203.
- Lorenz, E., 1963. Deterministic non-periodic flow. *J. Atmos. Sci.* **20**, 130–141.
- Miller, R., Ghil, M. and Gauthiez, F., 1994. Advanced data assimilation in strongly nonlinear dynamical systems, *J. Atmos. Sci.* **51**, 1037–1056.
- Miyoshi, T., 2005. *Ensemble Kalman filter experiments with a Primitive-Equation global model*. Doctoral dissertation, University of Maryland, College Park, 197 pp. Available at: <https://drum.umd.edu/dspace/handle/1903/3046>.
- Miyoshi, T. and Yamane, S., 2007. Local ensemble transform Kalman filtering with an AGCM at a T159/L48 resolution. *Mon. Wea. Rev.*, in press.
- Molteni, F., 2003. Atmospheric simulations using a GCM with simplified physical parameterizations. I: model climatology and variability in multi-decadal experiments. *Clim. Dyn.* **20**, 175–191.
- Morss, R. E., Emanuel, K. A. and Snyder, C., 2001. Idealized adaptive observations strategies for improving numerical weather prediction. *J. Atmos. Sci.* **58**, 210–234.
- Nerger, L., Hiller, W. and Scroeter, J., 2005. A comparison of error subspace Kalman filters. *Tellus* **57A**, 715–735.
- Ott, E., Hunt, B. R., Szunyogh, I., Zimin, A. V., Kostelich, E. J. and co-authors. 2002. Exploiting local low dimensionality of the atmospheric dynamics for efficient Kalman filtering. ArXiv:archive/paper 020358, Available at: <http://arxiv.org/abs/physics/020358>.
- Ott, E., Hunt, B. R., Szunyogh, I., Zimin, A. V., Kostelich, E. J. and co-authors. 2004. A local ensemble Kalman filter for atmospheric data assimilation. *Tellus* **56A**, 415–428.
- Parrish, D. F. and Derber, J. C., 1992. The National Meteorological Center's Spectral Statistical-Interpolation Analysis System. *Mon. Wea. Rev.* **120**, 1747–1763.
- Pires, C., Vautard, R. and Talagrand, O., 1996. On extending the limits of variational assimilation in chaotic systems. *Tellus*, **48A**, 96–121.
- Rabier, F., Jarvinen, H., Klinker, E., Mahfouf, J.-F. and Simmons, A., 2000. The ECMWF operational implementation of four-dimensional variational physics. *Q. J. R. Meteorol. Soc.*, **126**, 1143–1170.
- Rabier, F. and Liu, Z., 2003. Variational assimilation: theory and overview. Available at: http://www.ecmwf.int/publications/library/ecpublications/_pdf/seminar/2003/sem2003_rabier.pdf
- Riishojgaard, L.-P., 1998. A direct way of specifying flow-dependent background error correlations for meteorological analysis systems. *Tellus* **50A**, 42–57.
- Rotunno, R. and Bao, J. W., 1996. A case study of cyclogenesis using a model hierarchy. *Mon. Wea. Rev.* **124**, 1051–1066.
- Schröter, J., Seiler, U. and Wenzel, M., 1993. Variational assimilation of Geosat into an eddy-resolving model of the Gulf Stream extension area. *J. Phys. Ocean.* **23**, 925–953.
- Szunyogh, I., Kostelich, E. J., Gyarmati, G., Patil, D. J., Hunt, B. R. and co-authors. 2005. Assessing a local ensemble Kalman filter: Perfect model experiments with the NCEP global model. *Tellus* **57A**, 528–545.
- Szunyogh, I., Kostelich, E., Gyarmati, G., Kalnay, E., Hunt, B. R. and co-authors. 2007. Assessing a local ensemble Kalman filter: assimilating

- real observations with the NCEP global model. Under revision in *Tellus*.
- Tippett, M. K., Anderson, J. L., Bishop, C. H., Hamill, T. M. and Whitaker, J. S., 2003. Ensemble square root filters. *Mon. Wea. Rev.* **131**, 1485–1490.
- Tremolet, Yannick, 2005. Accounting for an imperfect model in 4D-Var. ECMWF Tech Memo #477. Available at: www.ecmwf.int/publications.
- Wang, X. and Bishop, C. H., 2003. A comparison of breeding and ensemble transform Kalman filter ensemble forecast schemes. *J. Atmos. Sci.* **60**, 1140–1158.
- Whitaker, J. S. and Hamill, T. M., 2002. Ensemble data assimilation without perturbed observations. *Mon. Wea. Rev.* **130**, 1913–1924.
- Whitaker, J. S., Hamill, T. M., Wei, X., Song, Y. and Toth, Z., 2007. Ensemble Data Assimilation with the NCEP Global Forecast System. *Mon. Wea. Rev.*, under revision. Available at <http://www.cdc.noaa.gov/people/jeffrey.s.whitaker/Manuscripts/pubs.html>
- Yang, S-C., Corazza, M., Carrassi, A. and Kalnay, E., 2007. Comparison of ensemble-based and variational-based data assimilation schemes in a quasi-geostrophic model. *AMS 10th Symposium on Integrated Observing and Assimilation Systems for the Atmosphere, Oceans, and Land Surface*. Available at: <http://ams.confex.com/ams/pdfpapers/101581.pdf>
- Yang, S-C., Baker, D., Li, H., Huff, M., Nagpal, G. and co-authors. 2006. Data assimilation as synchronization of truth and model: experiments with the 3-variable Lorenz system. *J. Atmos. Sci.* **63**, 2340–2354.
- Zupanski, M., 2005. Maximum likelihood ensemble filter: theoretical aspects. *Mon. Wea. Rev.* **133**, 1710–1726.