

## TIME-OF-DAY OF PEMBROLIZUMAB INFUSION AND CLINICAL OUTCOMES OF PATIENTS WITH NSCLC: TOO SOON TO PROMOTE MORNING INFUSIONS

<sup>1,2</sup>Alessio Cortellini\*, <sup>3</sup>Adriana Barrichello, <sup>3</sup>Joao Victor Alessi, <sup>3</sup>Biagio Ricciuti, <sup>3</sup>Victor Vatz, <sup>4</sup>Thomas Newsom-Davis, <sup>1</sup>Joanne Evans, <sup>3</sup>Giuseppe Lamberti, <sup>3</sup>Federica Pecci, <sup>5</sup>Patrizia Viola, <sup>1</sup>Antonio D'Alessio, <sup>1</sup>Claudia Fulgenzi, <sup>3</sup>Mark Awad, <sup>1</sup>David Pinato. <sup>1</sup>Imperial College London, London, UK; <sup>2</sup>University of L'Aquila, London, UK; <sup>3</sup>Dana Farber Cancer Institute, Boston, MA, United States; <sup>4</sup>Chelsea and Westminster Hospital, London, UK; <sup>5</sup>Charing Cross Hospital, London, UK

**Background** Circadian oscillations in T-cell function may influence outcome from cancer immunotherapy.<sup>1</sup> Evidence for an association between time-of-day of immune checkpoint inhibitors (ICI) infusion on outcomes in patients with non-small cell lung cancer (NSCLC) is scanty.

**Methods** In this multicenter study, we retrospectively evaluated the association between time-of-day patterns of pembrolizumab infusion and outcomes in a cohort of patients with treatment-naïve metastatic NSCLC with PD-L1 expression  $\geq 50\%$  treated from June 2016 to September 2021. Receipt of  $\geq 20\%$  vs  $< 20\%$  of infusions after the 16.30h cut off time ("late infusions") was set as threshold for analysis. In addition, we explored increasing thresholds for late infusions based on centre-specific distribution of cut-off times.

**Results** Overall 180/262 patients received  $\geq 4$  cycles and were eligible, 136 (75.5%) and 44 (24.5%) patients respectively received  $< 20\%$  and  $\geq 20\%$  of evening infusions. Evening infusions were associated with a lower number of cycles (median: 14 vs 8,  $p=0.0002$ ). Following a propensity score matching (PSM) accounting for age, PD-L1-expression, ECOG-PS, bone metastases, smoking status and sex, 78 and 44 patients were matched from the  $< 20\%$  and the  $\geq 20\%$  evening infusions cohorts. Median OS and PFS of patients who received  $\geq 20\%$  and  $< 20\%$  of evening infusions were 27.8 vs 47.1 months ( $p=0.11$ ) (figure 1A), and 6.6 vs 19.7 months ( $p=0.056$ ) (figure 1B), respectively. Evening infusions did not affect the risk of death (HR 1.53, 95%CI: 0.88-2.76) or disease progression/death (HR 1.51, 95%CI: 0.95-2.42) at the multivariable analysis. When including the number of cycles in the PMS, patients who received  $< 20\%$  and  $\geq 20\%$  of evening infusions experienced similar OS and PFS estimates (figure 1C,D). The exploratory analyses of OS according to increasing quartiles using the 16.30h threshold and the centre-specific median time-of-day threshold across the entire population and the landmark population highlighted that both the receipt of 0% and 100% of evening and late infusions were associated with an increased risk of death (table 1), while after adjusting for the number of administered cycles, no proportion of late infusions was significantly associated to the risk of death.

Figure 2 provides a representation of the distribution of cycles across progressive thresholds for proportions of evening (16.30h threshold) and late (median time-of-day threshold) infusions according to incremental quartiles, highlighting duration of therapy as an inherent bias in retrospective analyses.

**Conclusions** Translational dynamic studies of peripheral T-cell immunity are warranted while prospective trials should be conducted before promoting morning infusion in clinic.

**Acknowledgements** The authors would like to acknowledge the infrastructure support provided by Imperial Experimental Cancer Medicine Centre, Cancer Research UK Imperial Centre and the Imperial College Healthcare NHS Trust Tissue Bank.

Antonio D'Alessio acknowledges the support received from the NIHR Imperial BRC, the European Association for the

Study of the Liver (Andrew Burroughs Fellowship) and Cancer Research UK (RCCPDB-Nov21/100008).

Biagio Ricciuti acknowledges the support received by the Society of Immunotherapy of Cancer-Astrazeneca Young Investigator Award.

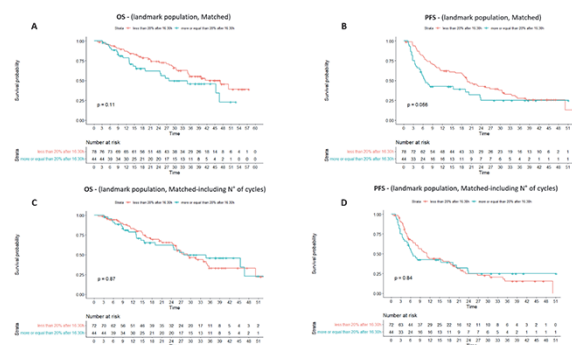
David J. Pinato acknowledges grant funding from the Wellcome Trust Strategic Fund (PS3416) and support from the Cancer Treatment and Research Trust (CTRT).

Alessio Cortellini acknowledges support by the NIHR Imperial BRC.

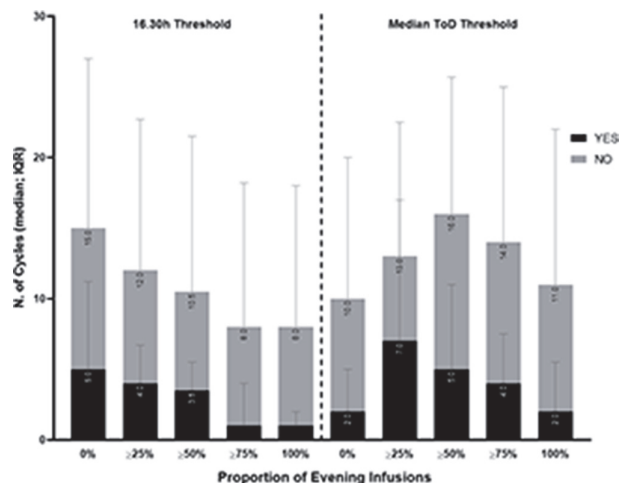
### REFERENCE

- Qian DC, Kleber T, Brammer B, *et al.* Effect of immunotherapy time-of-day infusion on overall survival among patients with advanced melanoma in the USA (MEMOIR): a propensity score-matched analysis of a single-centre, longitudinal study. *Lancet Oncol.* 2021 Dec;**22**(12):1777–1786. doi: 10.1016/S1470-2045(21)00546-5.

**Ethics Approval** The institutional review board for each institution granted approval to the study, which was conducted according to the ethical principles of the Declaration of Helsinki. (Central IRB ref.: 17/WA/0161/R18009).



**Abstract 512 Figure 1** Kaplan-Meier survival estimates among the matched landmark population (=4 cycle) according to the receipt of  $\geq 20\%$  or  $< 20\%$  of evening infusions. Matching variables were: age, PD-L1 TPS, Eastern Cooperative Oncology Group Performance Status (ECOG-PS), bone metastases, smoking status and biological sex. (A) Overall survival (OS); (B) Progression Free Survival (PFS). Kaplan-Meier survival estimates among the matched landmark population (=4 cycle) according to the receipt of  $\geq 20\%$  or  $< 20\%$  of evening infusions, including the number of administered cycles in the matching procedure. (C) Overall survival (OS); (D) Progression Free Survival (PFS)



**Abstract 512 Figure 2** Graphical representation of the distribution of median number of administered cycles across progressive thresholds for proportions of late infusions according to incremental quartiles. No infusions after 16.30h YES: 5 (IQR: 2-11.2), No infusion after 16.30h NO: 10 (IQR: 4-22);  $\geq 25\%$  infusions after 16.30h: 4 (IQR: 2-6.7),  $< 25\%$  infusions after 16.30h: 8 (IQR: 3-18.7);  $\geq 50\%$  infusions after 16.30h: 3.5 (IQR: 2-5.5),  $< 50\%$  infusions after 16.30h: 7 (IQR: 3-18);  $\geq 75\%$  infusions after 16.30h: 1 (IQR: 1-4),  $< 75\%$  infusions after 16.30h: 7 (IQR: 3-17.2); All infusions after 16.30h YES: 1 (IQR: 1-2), All infusions after 16.30h NO: 7 (IQR: 3-17). No infusions after median ToD YES: 2 (IQR: 1-5), No infusions after 16.30h NO: 8 (IQR: 3-18);  $\geq 25\%$  infusions after median ToD: 7 (IQR: 3-17),  $< 25\%$  infusions after 16.30h: 6 (IQR: 2-15.5);  $\geq 50\%$  infusions after median ToD: 5 (IQR: 2-11),  $< 50\%$  infusions after 16.30h: 11 (IQR: 3.2-20.7);  $\geq 75\%$  infusions after median ToD: 4 (IQR: 2-7.5),  $< 75\%$  infusions after 16.30h: 10 (IQR: 4-21); All infusions after median ToD YES: 2 (IQR: 1-5.5), All infusions after 16.30h: 9 (IQR: 4-20). IQR: inter-quartile range; ToD: time-of-day

**Abstract 512 Table 1** Univariable and multivariable analysis of the risk of death according to incremental quartiles of evening infusions for each patients using the 16.30h threshold and centre-specific cut-offs (median time-of-day at each centre) among the whole study population and the landmark population. Increasing quartile of late infusions was first tested alone and then adjusted for the number of administered cycles. HR: hazard ratio; CI: confidence intervals

VARIABLE	Overall population		Landmark population ( $\geq 4$ cycles)	
	HR (95% CI) for risk of death		HR (95% CI) for risk of death	
0% of infusions after 16.30	1.69 (1.22-2.38)	1.37 (0.97-1.92)	1.42 (0.92-2.22)	1.33 (0.86-2.08)
Yes vs No				
N° of cycles (continuous)	-	0.91 (0.89-0.93)	-	0.93 (0.91-0.96)
25% of infusions after 16.30	1.71 (1.17-2.49)	1.03 (0.71-1.51)	1.34 (0.76-2.35)	0.79 (0.44-1.42)
Yes vs No				
N° of cycles (continuous)	-	0.91 (0.88-0.93)	-	0.93 (0.91-0.96)
50% of infusions after 16.30	1.80 (1.17-2.77)	0.97 (0.62-1.52)	1.98 (1.07-3.67)	1.13 (0.60-2.15)
Yes vs No				
N° of cycles (continuous)	-	0.91 (0.88-0.93)	-	0.93 (0.91-0.96)
75% of infusions after 16.30	3.17 (1.75-5.74)	1.82 (1.01-3.31)	1.43 (0.45-4.56)	0.78 (0.24-2.50)
Yes vs No				
N° of cycles (continuous)	-	0.91 (0.88-0.93)	-	0.93 (0.91-0.96)
100% of infusions after 16.30	4.81 (2.58-8.96)	2.83 (1.51-5.31)	1.88 (0.46-7.74)	1.08 (0.26-4.49)
Yes vs No				
N° of cycles (continuous)	-	0.91 (0.88-0.93)	-	0.93 (0.91-0.96)
0% of infusions after median time	1.85 (1.15-2.94)	0.94 (0.58-1.54)	1.37 (0.49-3.85)	0.81 (0.29-2.27)
Yes vs No				
N° of cycles (continuous)	-	0.91 (0.88-0.93)	-	0.93 (0.91-0.96)
25% of infusions after median time	1.09 (0.73-1.61)	1.06 (0.71-1.57)	1.27 (0.73-2.27)	1.05 (0.59-1.84)
Yes vs No				
N° of cycles (continuous)	-	0.91 (0.88-0.93)	-	0.93 (0.91-0.96)
50% of infusions after median time	1.63 (1.16-2.29)	1.12 (0.79-1.59)	1.52 (0.97-2.37)	1.09 (0.68-1.73)
Yes vs No				
N° of cycles (continuous)	-	0.91 (0.88-0.93)	-	0.93 (0.91-0.96)
75% of infusions after median time	2.04 (1.47-2.82)	1.24 (0.88-1.74)	1.81 (1.17-2.81)	1.13 (0.70-1.82)
Yes vs No				
N° of cycles (continuous)	-	0.91 (0.88-0.93)	-	0.93 (0.91-0.96)
100% of infusions after median time	2.14 (1.51-3.05)	1.19 (0.83-1.72)	1.00 (1.53-1.89)	0.58 (0.30-1.12)
Yes vs No				
N° of cycles (continuous)	-	0.91 (0.88-0.93)	-	0.93 (0.91-0.96)

<http://dx.doi.org/10.1136/jitc-2022-SITC2022.0512>