

A 55-Day-Old Female Infant Infected With 2019 Novel Coronavirus Disease: Presenting With Pneumonia, Liver Injury, and Heart Damage

Yuxia Cui,^{1,a} Maolu Tian,^{2,a} Dong Huang,¹ Xike Wang,¹ Yuying Huang,¹ Li Fan,¹ Liang Wang,¹ Yun Chen,¹ Wenpu Liu,¹ Kai Zhang,¹ Yue Wu,¹ Zhenzhong Yang,¹ Jing Tao,¹ Jie Feng,¹ Kaiyu Liu,¹ Xianwei Ye,³ Rongpin Wang,⁴ Xiangyan Zhang,³ and Yan Zha²

¹Department of Pediatrics, Guizhou Provincial People's Hospital, Guiyang, Guizhou, China, ²Department of Nephrology, Institute of Nephritic and Urinary Disease, Guizhou Provincial People's Hospital, Guiyang, Guizhou, China, ³Department of Pulmonary Medicine, NHC Key Laboratory of Pulmonary Immunological Diseases, Guizhou Provincial People's Hospital, Guiyang, China, ⁴Department of Radiology, Guizhou Provincial People's Hospital, Guiyang, China

Background. Previous studies on the pneumonia outbreak caused by the 2019 novel coronavirus disease (COVID-19) were mainly based on information from adult populations. Limited data are available for children with COVID-19, especially for infected infants.

Methods. We report a 55-day-old case with COVID-19 confirmed in China and describe the identification, diagnosis, clinical course, and treatment of the patient, including the disease progression from day 7 to day 11 of illness.

Results. This case highlights that children with COVID-19 can also present with multiple organ damage and rapid disease changes.

Conclusions. When managing such infant patients with COVID-19, frequent and careful clinical monitoring is essential.

Keywords. COVID-19 pneumonia; heart damage; liver injury.

A 55-day-old otherwise healthy female infant of mixed feeding became ill with rhinorrhoea and a dry cough on January 28, 2020. She was admitted to our hospital on February 2, 2020. Before the onset of symptoms, she had been taken to Lu'an, Hubei Province by her parents for a family party between January 16 and January 24, 2020. At that party, the infant's uncle and aunt, Wuhan residents, presented with cough and fever. Then, the child's parents were diagnosed with coronavirus disease 2019 (COVID-19) on January 31, 2020 based on their

symptoms, chest imaging, and viral ribonucleic acid (RNA) in pharyngeal swabs. The nasopharyngeal swab obtained from the infant also tested positive for severe acute respiratory syndrome coronavirus (SARS-CoV-2) on real-time, reverse-transcription polymerase-chain-reaction (RT-PCR) assay.

PATIENTS AND METHODS

On admission, the physical examination showed that vital signs were within normal ranges except for pharyngeal hyperemia. A chest computed tomographic (CT) scan was reported as showing patchy shadows and ground-glass opacity in the right lung (Figure 1A). Laboratory results reflected there were alterations in hepatic function measures and mildly abnormal myocardial zymogram (Table 1). Lymphocyte count, platelet count, CD8⁺ T lymphocyte count, and serum immunoglobulin (Ig)M level were all mildly elevated. Other laboratory examinations including hemoglobin, D-dimer, activated partial thromboplastin time, prothrombin time, C-reactive protein, erythrocyte sedimentation rate, and renal function in this patient showed no abnormalities. Both rotavirus in stool and cytomegalovirus deoxyribonucleic acid in blood were negative. Based on the definite contact history and the above test results, the infant was diagnosed as COVID-19 (ordinary type). She was isolated and treated empirically with the inhaled interferon α -1b (15 μ g, bid), amoxicillin potassium clavulanate (30 mg/kg, q8h, intravenous glucose tolerance test [IVGTT]), reduced glutathione, ursodeoxycholic acid, and traditional Chinese medicine lotus qingwen.

On days 2 through 6 of hospitalization (days 7 through 11 of illness), the patient became sicker, presenting as a frequently productive cough accompanied by occasional tachycardia (150–170 beats per minute). Decreased arterial oxygen partial pressures (lowest PaO₂, 56 mmHg) with elevated lactic acid while breathing ambient air were found in the morning of hospital day 4 (Figure 2). She received sputum suctioning. Meanwhile, oxygen was supplied through a nasal cannula immediately, and ambroxol was administered to eliminate phlegm. Because there was a trend of aggravation in the disease grade, a second chest CT scan was performed in the evening of hospital day 4 (illness day 9), which showed evidence of progressive pneumonia (Figure 1B). These radiographic findings coincided with a progress in respiratory status. Abnormal myocardial zymogram on admission and increased troponin I (0.025 μ g per liter) on hospital day 4 indicated myocardial injury, so intravenous sodium creatine phosphate was added to protect her heart. During this period, the baby still had a good appetite, without diarrhea, oliguria, or shock. On day 11

Received 16 February 2020; editorial decision 6 March 2020; accepted 11 March 2020; published online March 17, 2020.

^aY. C. and M. T. contributed equally to this work and share first authorship.

Correspondence: Yan Zha, MD, #83 Zhongshan East Road, Guiyang, Nanming District 550002 (China) (zhayansy@163.com).

The Journal of Infectious Diseases® 2020;221:1775–80

© The Author(s) 2020. Published by Oxford University Press for the Infectious Diseases Society of America. All rights reserved. For permissions, e-mail: journals.permissions@oup.com. DOI: 10.1093/infdis/jiaa113

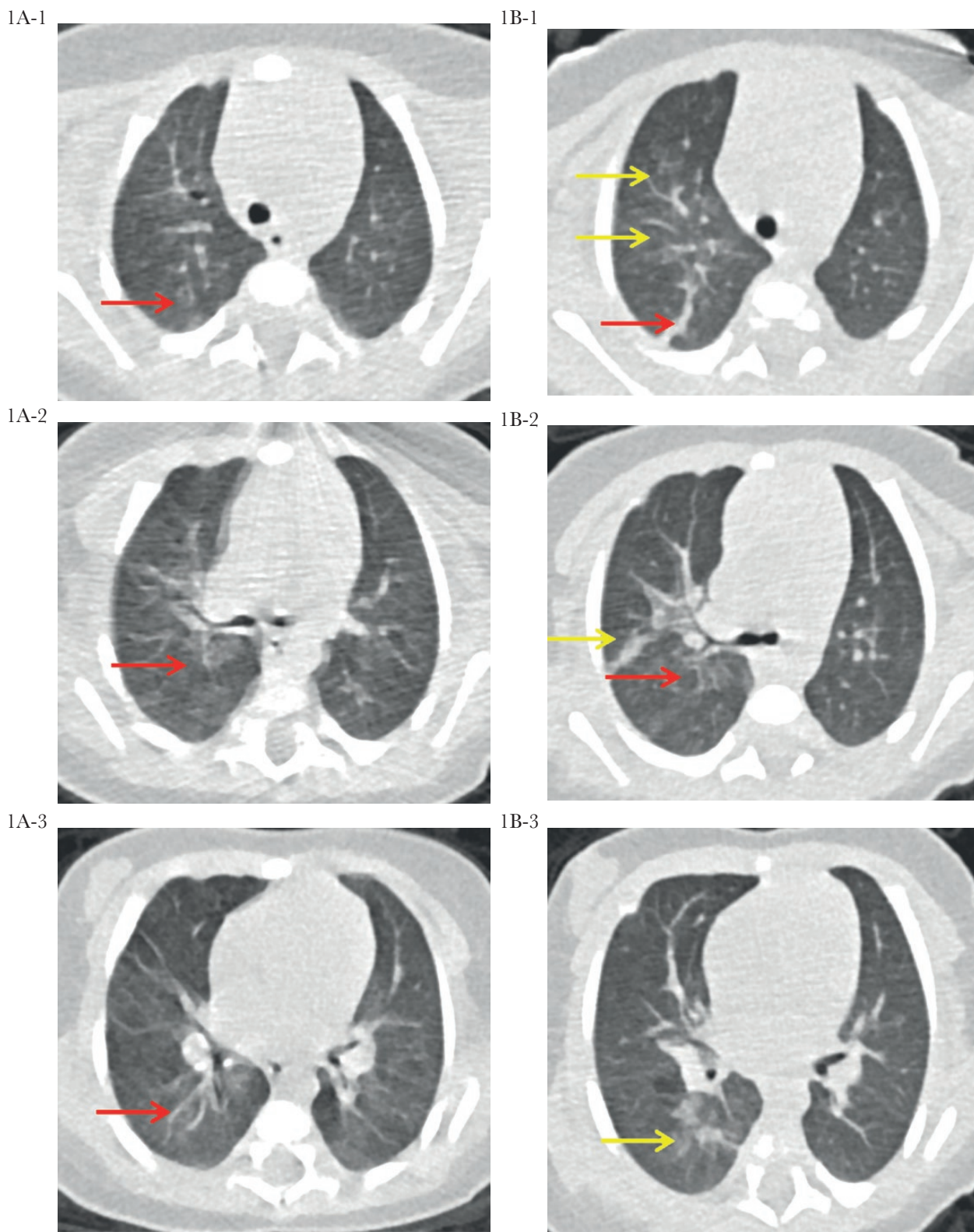
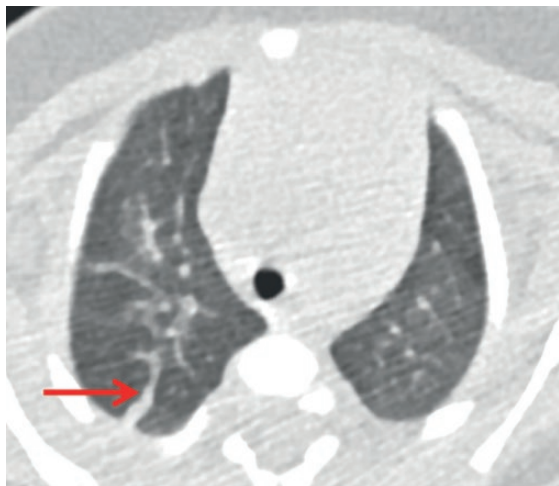


Figure 1. Chest computed tomographic (CT) images of a 55-day-old female infant with COVID-19. NOTE: The scanning condition was low-dose CT with 80-kV tube voltage and 23- to 26-mAs tube current (automatic). (A) The CT images on admission (illness day 6): multiple patchy shadows and ground-glass opacity in the upper and lower lobes of the right lung (red arrow). (B) The CT images on hospital day 4 (illness day 9): compared with day 6 of illness, the lesion progressed and the range widened (yellow arrow), accompanied with small consolidation shadow and a few stripe shadows (red arrow). (C) The CT images on on hospital day 11 (illness day 16): compared with day 9 of illness, the inflammation of the right lung was obviously absorbed. Small patchy shadows with increased density and a few strip-like shadows were still observed in the upper lobe of the right lung (red arrow).

1C-1



1C-2



1C-3



Figure 1. Continued

of the patient's illness, a stool specimen was collected for the first time to detect the viral RNA, and the PCR result showed positive.

RESULTS

On days 7 through 12 of hospitalization (days 12 through 17 of illness), the patient's clinical condition gradually improved and the respiratory symptoms disappeared on hospital day 11. Supplemental oxygen was discontinued, and her oxygen saturation values were 94% to 100% while breathing ambient air. The heart rate fluctuated between 120 and 140 beats per minute. The laboratory examinations on hospital day 10 showed elevated myocardial zymogram and abnormal liver function both recovered. On hospital day 11 (illness day 16), a third chest CT scan showed patchy shadows and ground-glass opacity were obviously absorbed (Figure 1C). In view of the patient's clinical manifestations and other laboratory findings, the *Citrobacter freundii* in 2 sputum cultures was considered as a colonized bacteria of the respiratory tract and was not being treated. Three pharyngeal swabs obtained from hospital day 10 to hospital day 13 were found to be negative for SARS-CoV-2 on RT-PCR assays. Amoxicillin potassium clavulanate was discontinued on hospital day 11, and interferon α -1b was discontinued on the following day. According to the latest interim guidance of the COVID-19 diagnosis and treatment in China, the patient met the discharge criteria. However, we found that her anal swabs collected on hospital day 11 and 13 were still positive for SARS-CoV-2 RNA. Thus, the patient remained hospitalized. From February 16, 2020, she was transferred to another hospital for continued isolation and observation. In the process of manuscript revision, we have learned that she was still asymptomatic during this period, and the anal swab collected on February 28, 2020 was negative for this viral RNA.

Regarding the patient's mother, we have learned that this viral RNA had been detected in the mother's stool sample on February 4, 2020 (illness day 8) and anal swab on February 7, 2020 (illness day 11), although she also had no abdominal symptoms. In addition, 3 consecutive tests of SARS-CoV-2 RNA in the mother's breastmilk were negative between February 2, 2020 and February 4, 2020. The mother's urine specimen collected on February 6, 2020 was negative for SARS-CoV-2.

DISCUSSION

The SARS-CoV-2 infection can lead to acute resolved or fatal pneumonia. Currently, the main source of infection is COVID-19 patients. The route of human-to-human transmission of SARS-CoV-2 is mainly through respiratory droplets and contacts. The fecal-oral route and maternal-infant transmission have not been confirmed or ruled out. Although the number of cases has increased rapidly, information on the clinical characteristics of affected pediatric patients is rare. We have learned that Middle East respiratory syndrome-coronavirus (MERS-CoV) in children is less frequent and seems to be associated with less mortality unless the patient has underlying comorbidities [1, 2]. This impression in children with MERS-CoV was also

Table 1. Laboratory Indicators on Admission and the Changes After Treatment

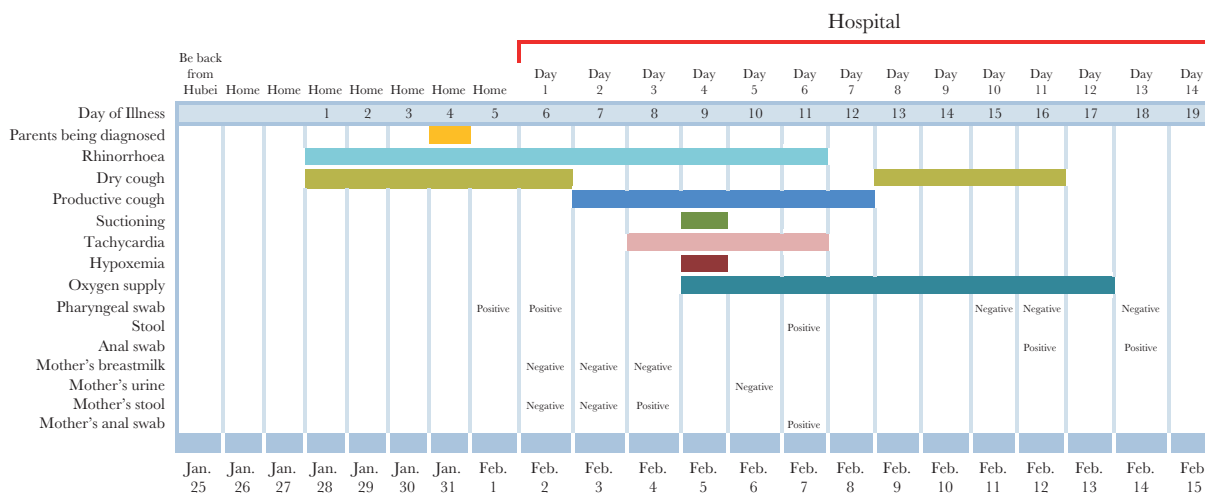
Measure	Reference Range	Illness Day 6, Hospital Day 1	Illness Day 9, Hospital Day 4	Illness Day 15, Hospital Day 10
White cell count ($\times 10^9/L$)	6–18	7.96	10.04	9.46
Lymphocyte count ($\times 10^9/L$)	1.1–3.2	5.22 ^a	6.59 ^a	6.25 ^a
Neutrophil count ($\times 10^9/L$)	1.8–6.3	1.87	2.44	2.01
Platelet count ($\times 10^9/L$)	125–350	406 ^a	449 ^a	604 ^a
Hemoglobin (g/L)	95–145	112	91 ^b	101
Erythrocyte sedimentation rate (mm/h)	0–20	7	2	-
C-reactive protein (mg/L)	0–5	0.56	0.63	0.32
Procalcitonin (ng/mL)	0–0.046	0.15 ^a	0.11 ^a	-
Alanine aminotransferase (U/L)	7–40	84 ^a	49 ^a	33
Aspartate aminotransferase (U/L)	13–35	100 ^a	47 ^a	35
Total bilirubin ($\mu\text{mol/L}$)	3.4–20.5	33.7 ^a	20.1 ^a	10.9
Direct bilirubin ($\mu\text{mol/L}$)	0–8.6	25.2 ^a	16.6 ^a	7
Total bile acid ($\mu\text{mol/L}$)	0–10	154.4 ^a	89.8 ^a	46.4 ^a
Creatine kinase isoenzyme (U/L)	0–25	46 ^a	-	25
α -hydroxybutyrate dehydrogenase (U/L)	44–148	237 ^a	-	143
Troponin I ($\mu\text{g/L}$)	0–0.0156	-	0.025 ^a	-
Creatinine ($\mu\text{mol/L}$)	15–45	20	19	21
Blood urea nitrogen (mmol/L)	1.8–6	3.61	2.09	2.15
Serum immunoglobulin M (g/L)	0.06–0.21	0.66 ^a	-	-
CD8 ⁺ T-cell count (cell/ μL)	400–1700	2208 ^a	-	-
D-dimer ($\mu\text{g/mL}$)	0–1.5	0.54	-	-
Activated partial thromboplastin time (seconds)	21.1–36.5	30.6	-	-
Prothrombin time (seconds)	9.2–12.2	9.7	-	-
Rotavirus in stool	Negative	Negative	-	-
Cytomegalovirus DNA in blood	Negative	Negative	-	-

Abbreviations: DNA, deoxyribonucleic acid.

^aThe value in the patient was above normal.^bThe value in the patient was below normal.

reported during the SARS-CoV infections in pediatric patients, in which symptoms were milder, there were few hospitalizations, and resulted in no death [3, 4]. Possible explanations include low exposure, presence of asymptomatic or mildly symptomatic patients, the immature immune system, and the

presence of unidentified factors. The SARS-CoV-2 strains are less genetically similar to SARS-CoV (with 79% identity) and MERS-CoV (approximately 50%) [5], so regarding the infection of SARS-CoV-2 in children, there are still many gaps in our understanding, including route of transmission, susceptibility,

**Figure 2.** Disease course of the infected infant and important information about her parents.

clinical course of patients, the disease pathogenesis, pharmacological therapies, prognosis, etc.

Wei et al [6] reported 9 infants diagnosed with COVID-19, including 1 baby at the age of 1 month, 26 days. However, there was no detailed information about the patients' examination and treatment in this letter. Our report illustrated the full clinical course of the infected infant. The patient had traveled to Hubei, China and had the sick contacts during her stay in Hubei. Although signs and symptoms caused by SARS-CoV-2 infection at the prodromal phase was atypical and nonspecific, the chest CT scan showed bilateral patchy shadows, in line with the atypical pneumonia. Acute liver injury and cardiac damage were also observed in this patient. Due to the difficulty of specimen collecting and the risk of cross-infection when going out for examination, other etiological tests of cardiac and hepatic abnormalities, except for rotavirus and cytomegalovirus detection, were not performed. Given the patient's definite contact history of COVID-19, positive SARS-CoV-2 RNA, and good response to treatment, the 2 injuries were thought to be related to COVID-19. Elevated CD8⁺ cell count in peripheral blood and increased serum IgM level on admission might indicate that both cellular immune and humoral immune in acute infection have been activated to produce cytotoxic T lymphocyte and antibodies to kill and neutralize the virus. Huang et al [7] found that SARS-CoV-2 infection appears to be initially associated with an increased T helper 2 cell response, which might reflect a physiological reaction to suppress overt inflammatory responses.

Our case patient initially presented with mild dry cough and no fevers. However, from day 7 of her illness, her symptoms were gradually getting worse, especially on day 9 of her illness, coinciding with results of the second chest CT scan. The timing of our patient's progression is consistent with that reported in adults [8, 9]. Due to the lack of effective verbal communication with infants, more frequent and careful clinical monitorings should be performed to find disease progression. When the patient's status was worsening, symptomatic support was strengthened. Corticosteroids were not used in this patient, because her clinical condition was not completely out of control, and there is still no conclusive evidence of net benefit in the treatment of respiratory infection due to several viruses including SARS-CoV and MERS-CoV [10, 11]. Therefore, the timely and appropriate symptomatic support treatment and the patients' own immune system may be the best means to combat the SARS-CoV-2 in pediatric patients.

CONCLUSIONS

We noticed that 3 consecutive tests of SARS-CoV-2 RNA in the breastmilk of the infant's mother were negative.

Whether the virus could not enter the milk due to some barrier and whether a confirmed case could continue to provide her breastmilk for baby deserve further study. In addition, the SARS-CoV-2 RNAs have been detected in the stool specimens or anal swabs of both the patient and her mother, indicating a potential alternative route of fecal-oral transmission, even in patients without gastrointestinal symptoms. However, the clinical significance of this detection of viral RNA outside the respiratory tract is unknown at this stage. Fecal RNA appeared later than that of pharyngeal swab in the mother, which might indicate that the virus is swallowed into the digestive tract during the process of its elimination from the respiratory tract. Moreover, we also observed that it takes longer for a fecal SARS-CoV-2 RNA to turn negative than that of a pharyngeal specimen in the infant. This phenomenon might indicate that the digestive tracts clear the virus more slowly than the respiratory tracts. Whether the patient isolation should not be terminated until SARS-CoV-2 RNA in the stool turns negative is worth exploring. Just like the other 2 studies [9, 12], we found no evidence of viral shedding in urine of the patient's mother. However, improved systematic serial collection and testing of an increased number of urine samples is warranted to exclude this route of transmission. Finally, our understanding of COVID-19 is changing on a daily basis, and with continuous efforts from all sides, we hope and believe that this abominable disease can be controlled soon.

Notes

Acknowledgments. We thank the infant and her parents involved in the study. We acknowledge all healthcare workers involved in the diagnosis and treatment of patients with 2019 Novel Coronavirus Disease in Guizhou Provincial People's Hospital.

Financial support. This study was supported by the Cultivation Fund from National Natural Science Foundation of Guizhou people's Hospital (Number: [2018]5764-02) to Dr Cui.

Potential conflicts of interest. All authors: No reported conflicts of interest. All authors have submitted the ICMJE Form for Disclosure of Potential Conflicts of Interest. The funder had no role in the design and conduct of the study; collection, management, analysis, and interpretation of the data; preparation, review, or approval of the manuscript; and decision to submit the manuscript for publication. There were also no any other financial interests or connections, direct or indirect, or other situations which had raised the question of bias in the work reported or the conclusions, implications or opinions stated.

References

1. Arabi YM, Balkhy HH, Hayden FG, et al. Middle East respiratory syndrome. *N Engl J Med* 2017; 376:584–94.

2. Memish ZA, Al-Tawfiq JA, Assiri A, et al. Middle East respiratory syndrome coronavirus disease in children. *Pediatr Infect Dis J* **2014**; 33:904–6.
3. Hon KL, Leung CW, Cheng WT, et al. Clinical presentations and outcome of severe acute respiratory syndrome in children. *Lancet* **2003**; 361:1701–3.
4. Li AM, Ng PC. Severe acute respiratory syndrome (SARS) in neonates and children. *Arch Dis Child Fetal Neonatal Ed* **2005**; 90:F461–5.
5. Lu R, Zhao X, Li J, et al. Genomic characterisation and epidemiology of 2019 novel coronavirus: implications for virus origins and receptor binding. *Lancet* **2020**; 395:1565–74.
6. Wei M, Yuan J, Liu Y, et al. Novel coronavirus infection in hospitalized infants under 1 year of age in China. *JAMA* **2020**; DOI: [10.1001/jama.2020.2131](https://doi.org/10.1001/jama.2020.2131).
7. Huang C, Wang Y, Li X, et al. Clinical features of patients infected with 2019 coronavirus in Wuhan, China. *Lancet* **2020**; 395:497–506.
8. Wang D, Hu B, Hu C, et al. Clinical characteristics of 138 hospitalized patients with 2019 novel coronavirus–infected pneumonia in Wuhan, China. *JAMA* **2020**; DOI: [10.1001/jama.2020.1585](https://doi.org/10.1001/jama.2020.1585).
9. Holshue ML, DeBolt C, Lindquist S, et al. First case of 2019 novel coronavirus in the United States. *N Engl J Med* **2020**; 382:929–36.
10. Russell CD, Millar JE, Baillie JK. Clinical evidence does not support corticosteroid treatment for 2019-nCoV lung injury. *Lancet* **2020**; DOI: [10.1016/S0140-6736\(20\)30317-2](https://doi.org/10.1016/S0140-6736(20)30317-2).
11. Shang L, Zhao J, Hu Y, Du R, Cao B. On the use of corticosteroids for 2019-nCoV pneumonia. *Lancet* **2020**; 395:683–4.–5
12. Fuk-Woo Chan J, Yuan S, Kok K-H, et al. A familial cluster of pneumonia associated with the 2019 novel coronavirus indicating person-to-person transmission: a study of a family cluster. *Lancet* **2020**; 395:514–23.