



Published in final edited form as:

Science. 2007 November 30; 318(5855): 1418–1423. doi:10.1126/science.1147880.

A β -Defensin Mutation Causes Black Coat Color in Domestic Dogs

Sophie I. Candille^{1,*}, Christopher B. Kaelin^{1,*}, Bruce M. Cattanach², Bin Yu³, Darren A. Thompson³, Matthew A. Nix³, Julie A. Kerns^{1,†}, Sheila M. Schmutz⁴, Glenn L. Millhauser³, and Gregory S. Barsh^{1,‡}

¹Departments of Genetics and Pediatrics, Stanford University, Stanford, CA, USA.

²Medical Research Council (MRC) Mammalian Genetics Unit, Harwell, Oxfordshire, OX11 ORD, UK.

³Departments of Chemistry and Biochemistry, University of California at Santa Cruz (UCSC), Santa Cruz, CA 95064, USA.

⁴Department of Animal and Poultry Science, University of Saskatchewan, Saskatoon S7N 5A8, Canada.

Abstract

Genetic analysis of mammalian color variation has provided fundamental insight into human biology and disease. In most vertebrates, two key genes, *Agouti* and *Melanocortin 1 receptor (Mc1r)*, encode a ligand-receptor system that controls pigment type-switching, but in domestic dogs, a third gene is implicated, the *K* locus, whose genetic characteristics predict a previously unrecognized component of the melanocortin pathway. We identify the *K* locus as β -defensin 103 (*CBD103*) and show that its protein product binds with high affinity to the *Mc1r* and has a simple and strong effect on pigment type-switching in domestic dogs and transgenic mice. These results expand the functional role of β -defensins, a protein family previously implicated in innate immunity, and identify an additional class of ligands for signaling through melanocortin receptors.

AUTHORS' SUMMARY

The marked spectrum of color and diversity of patterns that we see in mammals arises, unexpectedly, from variation in the quantity, quality, and regional distribution of just two types of pigment—black eumelanin and yellow pheomelanin. The appeal of unusual coat colors and patterns has motivated their selection in domestic animals, providing geneticists with a model for studying gene action and interaction that began a century ago and continues today. Most of the work has been carried out in laboratory mice, where studies of more than 100 different coat-color mutations have provided insight into stem cell biology (hair graying), biogenesis of intracellular organelles (pigmentary dilution), and hormone-receptor interactions (switching between the synthesis of eumelanin and pheomelanin).

[‡]To whom correspondence should be addressed. gbarsh@stanford.ed.

*These authors contributed equally to the work.

[†]Present address: Fred Hutchinson Cancer Research Center, Seattle, WA 98109, USA.

Supporting Online Material

www.sciencemag.org/cgi/content/full/1147880/DC1

Materials and Methods

SOM Text

Figs. S1 to S10

Tables S1 to S3

References

The latter process—commonly known as pigment “type-switching”—is controlled primarily by the melanocortin system, in which a family of G protein–coupled receptors (identified by virtue of their response to α -melanocyte–stimulating hormone or adrenocorticotrophic hormone) has been implicated not only in pigmentation but also in cortisol production, body weight regulation, and exocrine gland secretion. In most mammals, pigment type-switching is controlled by two genes, the *Melanocortin 1 receptor (Mc1r)* and *Agouti*, which encode a seven transmembrane–domain receptor and its extracellular ligand, respectively. Indeed, our current understanding of melanocortin biology stems from the identification in laboratory mice of *Mc1r* mutations as the cause of *recessive yellow* and *Agouti* mutations as the cause of *lethal yellow*.

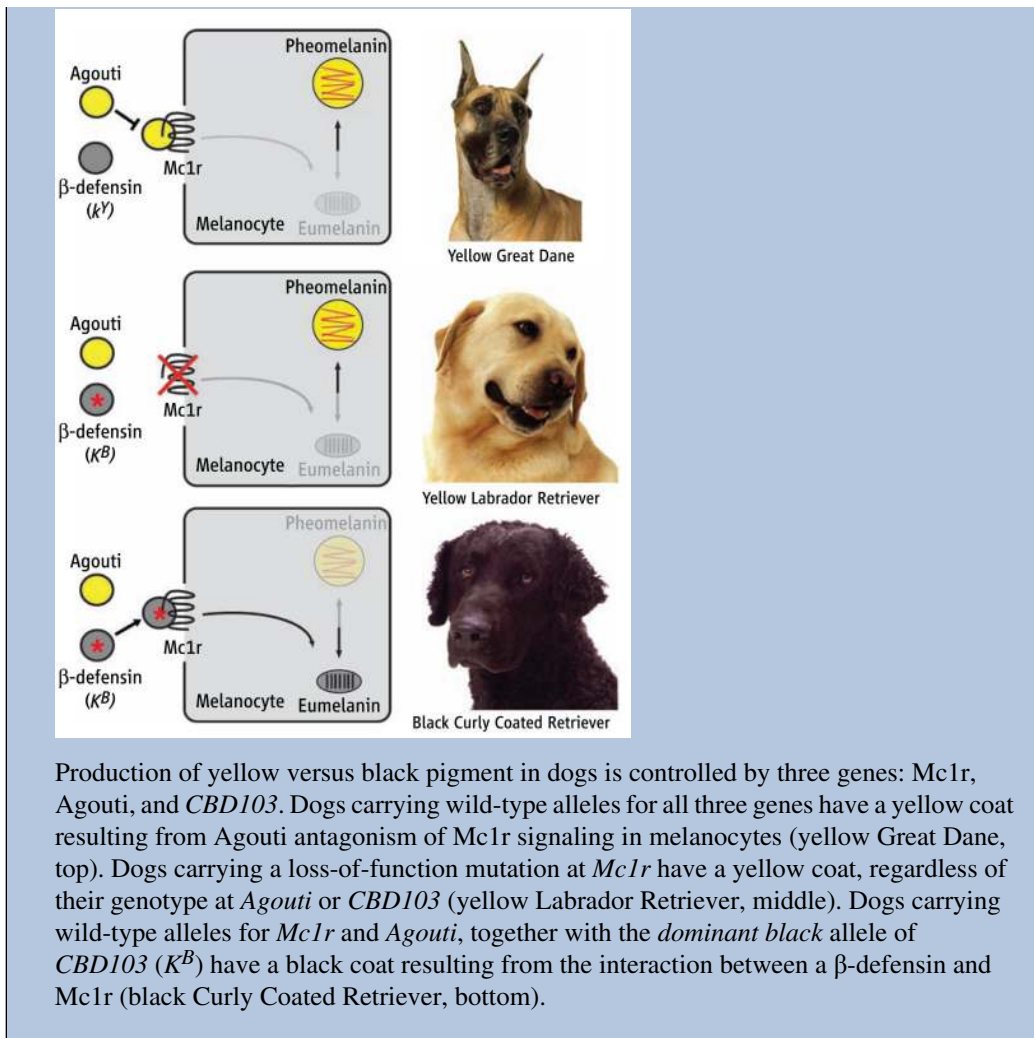
Clarence Cook Little, who developed many of the original laboratory mouse strains and founded The Jackson Laboratory, was also one of the first dog geneticists. He recognized that dominant inheritance of a black coat was mediated differently in dogs than in other animals (1). Using classical linkage analysis, we realized that the *dominant black* gene represented a previously unrecognized component of the melanocortin pathway (2). Unexpectedly, we found the responsible gene to encode a β -defensin, a secreted protein previously studied for its role in immunity.

The identification of *dominant black* (formally, an allele of the “*K* locus”) relied on two major advances in dog genetics: the sequencing of the dog genome and recognition that the distinctive genetic structure of dog breeds allows for efficient gene mapping (3). Dogs were domesticated from wolves more than 15,000 years ago and expanded into a diverse population until the recent establishment of dog breeds. This population history is well-suited for high-resolution genetic mapping of old traits, like black coat color, that are found in multiple modern breeds. Using a combination of pedigree analysis and association studies within and among dog breeds, we identified a mutation in a β -defensin gene, *CBD103*, that correlates with black coat color in 38 different breeds. We confirmed the role of *CBD103* in pigment typeswitching by demonstrating that the dog gene causes a black coat in transgenic mice. *CBD103* is a member of a large family of secreted peptides with structures similar to that of *Agouti* and is highly expressed in dog skin.

We used biochemical and cell-based assays to show that *CBD103*, like *Agouti*, binds competitively to the *Mc1r*, leading to an updated model of the pigment type-switching pathway (see figure). Moreover, studies with another β -defensin and additional melanocortin receptors reveal the potential for extensive cross-talk between β -defensins and the melanocortin system. In humans and other animals, β -defensins are highly polymorphic in sequence and copy number. Current β -defensin research is focused primarily on the immune system. This stems from the early discovery of defensins in phagocytic cells and their antimicrobial properties *in vitro*, together with more recent work demonstrating that defensins can act as receptor-specific chemotactic agents. Our work indicates that β -defensins do more than defend and suggests that the marked molecular variation in this family supplies a diverse and rapidly evolving family of ligands for G protein–coupled receptors in many different biologic systems.

Summary References

1. C. C. Little, *The Inheritance of Coat Color in Dogs* (Comstock, Ithaca, NY, 1957).
2. J. A. Kerns *et al.*, *Genetics* 176, 1679 (2007).
3. K. Lindblad-Toh *et al.*, *Nature* 438, 803 (2005).



Genetic analysis of model systems in laboratory animals underlies much of what we know about major signaling pathways in multicellular organisms. In mammals, coat-color mutations have proven especially fruitful, because much of the molecular machinery used by the pigmentary system is either shared by, or homologous to, genes used for other physiologic pathways (1).

This approach has been particularly useful for pigment “type-switching,” a phenomenon in which melanocytes synthesize eumelanin (a black or brown pigment) versus pheomelanin (a red or yellow pigment), depending on the phase of the hair growth cycle, position on the body, and the genotype of several key loci (2). In most mammals, two genes that control pigment type-switching have been recognized: the *Mc1r*, which encodes a seven transmembrane-spanning domain protein expressed on melanocytes (3–5), and *Agouti*, which encodes a ligand for the *Mc1r* that is secreted by specialized dermal cells and which inhibits *Mc1r* signaling (6–9). *Mc1r* activation causes exclusive production of eumelanin, whereas *Mc1r* inhibition causes exclusive production of pheomelanin (5,10). Thus, gain-of-function *Mc1r* mutations cause dominant inheritance of a black coat, whereas gain-of-function *Agouti* mutations cause dominant inheritance of a yellow coat. The *Mc1r* was first recognized by virtue of its ability to respond to peptides derived from proopiomelanocortin (POMC), such as α -melanocyte-stimulating hormone (α -MSH) (3,4); however, a null mutation of *Pomc* has no effect on

pigmentation in C57BL/6 mice, leading to the suggestion that the *Mc1r* has high basal activity and/or additional stimulatory ligands (11).

In a classic series of papers in the early 1900s, Sewall Wright (12) concluded that genetic mechanisms for color variation were largely conserved across mammals. An exception, however, later became apparent from the work of Clarence Cook Little on domestic dogs (13), in which dominant inheritance of a black coat was shown to involve a locus distinct from *Mc1r*. At the time, Little posited that *dominant black* was caused by an unusual allele of *Agouti*; however, using molecular linkage analysis, we recently demonstrated the presence of a third gene in dogs that interacts with *Agouti* and *Mc1r*, which we named the *K* locus (14). We found that the *K* locus has three alleles with a simple dominance order [*Black* (K^B) > *brindle* (k^{br}) > *yellow* (k^y)], that the *K* locus and *Agouti* behave similarly in genetic interaction studies (*Mc1r* is epistatic to both *K* and *Agouti*), and that the genetic map position of *K* does not correspond to the predicted location of any previously known pigmentation gene. We use the distinctive evolutionary history of domestic dogs to show that the *K* locus encodes a previously unrecognized class of melanocortin receptor ligands.

Linkage and association mapping of the *K* locus

We showed previously that the K^B mutation mapped to a 12-Mb interval on the distal end of dog chromosome 16 (CFA16), between markers REN292N24 and FH3592 (14). We ascertained additional kindreds segregating K^B , k^{br} , and k^y to refine the map location [see supporting online material (SOM) text] and defined overlapping critical regions of 3.8 and 7.6 Mb for the K^B and k^{br} mutations, respectively (Fig. 1A figs. S1 to S4).

We used an association-based strategy to narrow the critical region. Because most breeds were derived in the past 200 years from small founding populations (15), mutations within a breed are expected to be identical by descent and share extended haplotypes. In Boxers and Great Danes, we identified broad peaks of significant association (Bonferroni-corrected P value < 0.05) that extended over 1.9 Mb and 320 kb, respectively (Fig. 1, B to D). Sixteen genes have been annotated to the region of significant association in Great Danes, including a gene cluster that encodes 12 β -defensins (16): small antimicrobial peptides that are secreted mainly by epithelial cells (17,18). We sequenced the mature protein-coding regions for nine members of the β -defensin cluster (those known at the time) in dogs carrying K^B and/or k^y and identified several polymorphisms concordant with the K^B allele, including a 3-base pair (bp) deletion in the second exon of *CBD103*, the ortholog of human *DEFB103*, that predicts an in-frame glycine deletion (Δ G23).

To evaluate the extent to which the Δ G23 polymorphism distinguishes K^B versus k^y more broadly, we examined dogs from 38 breeds that could be classified into two categories with regard to their putative *K* locus genotype (SOM text). Among 454 dogs, there were 13 cases where the Δ G23 polymorphism did not correlate with coat-color phenotype. However, sequencing of *Agouti* and *Mc1r* revealed that each discordant case could be explained by known epistatic interactions (19,20) (table S3). These results indicate that K^B alleles in all breeds are probably identical by descent and suggest that the Δ G23 polymorphism or a closely linked variant in complete linkage disequilibrium (LD) is the K^B mutation.

Short-range haplotype and resequencing analysis of K^B -bearing chromosomes

By contrast to the pattern of LD within breeds, which affords a powerful approach for association mapping with megabase resolution, the pattern of LD across breeds is more fine-grained and therefore provides the opportunity for high-resolution haplotype mapping when

mutations in different breeds are identical by descent (21). We identified 28 polymorphisms [22 single-nucleotide polymorphisms (SNPs) and six indels including the $\Delta G23$ polymorphism] in a 20-kb interval surrounding *CBD103* that were then used to infer short-range haplotypes for 14 K^B -bearing and 16 k^y -bearing chromosomes selected from seven breeds (SOM text). We observed six “parental” k^y -bearing and five “parental” K^B -bearing chromosomes (depicted in yellow and blue, respectively, in Fig. 2A). We also identified eight chromosomes that carried a single ancestral recombination event, which together defined a maximal interval for K^B of 9146 bp (Fig. 2A). Complete resequencing of this interval (except for three homopolymer tracts) in five k^y/k^y animals, one K^B/k^y animal, and four K^B/K^B animals from seven breeds revealed two polymorphisms besides $\Delta G23$ that are perfectly concordant with *K* locus genotype (S104 and S105) (Fig. 2A and table S2).

The 9146-bp interval contains both exons of *CBD103*, the first exon of dog expressed sequence tag (EST) CX990240, and dog EST CO665262 (Fig. 2). However, several considerations indicate that *CBD103* is, indeed, the *K* locus and that the $\Delta G23$ deletion in *CBD103* is the K^B mutation. First, the other two transcribed elements in the critical interval are represented in the database by single ESTs and are not known to encode proteins or to be expressed in the skin. Second, S104 and S105 lie in a long terminal repeat element that is 3 kb upstream of the first exon of *CBD103* and have no effect on mRNA levels of *CBD103* (Fig. 3A). Finally, as discussed further below, *CBD103* is highly expressed in skin, the $\Delta G23$ deletion affects *CBD103* protein function, and pharmacologic studies reveal that *CBD103* can modulate melanocortin signaling.

The preceding discussion has referred to *K* locus variation as though k^y is ancestral, whereas K^B is derived: a hypothesis based on the comparative genetic distribution of coat-color phenotypes and inheritance patterns. Considerations based on sequence alignments confirm this hypothesis: Mammalian *CBD103* orthologs that we identified from the available genome sequence are each 67 amino acids in length, and the optimal sequence similarity alignment contains no gaps or insertions (Fig. 2B), indicating that $\Delta G23$ and consequently the K^B mutation occurred specifically within the canid lineage.

Expression of dog defensins in skin and in transfected keratinocytes

We isolated RNA from the skin of a k^y/k^y Doberman Pinscher and a K^B/k^y mixed-breed dog and surveyed the expression of the 19 β -defensin genes that are clustered on chromosomes 16 or 25 by reverse transcription polymerase chain reaction (RT-PCR) (16). Expression was detectable only for two genes: *CBD1* and *CBD103* (fig. S6). We then used quantitative RT-PCR to measure levels of skin mRNA from four K^B/k^y samples and four k^y/k^y samples, which were all from mixed-breed dogs, and found no effect of *K* locus genotype on levels of *CBD1*, *CBD103*, or *Agouti* mRNA (Fig. 3A).

Available antisera against human DEFB103 are unable to detect the endogenous dog protein by Western blotting or immunohistochemistry; therefore, we generated epitope-tagged expression constructs for each allele (CBD103V5 and CBD103DG23V5) and studied their patterns and levels of protein expression after transfection of cultured mouse keratinocytes.

In cell extracts analyzed by Western blotting, antisera against the V5 epitope detect a single fragment whose size (about 8 kD) corresponds to the expected molecular mass of the tagged protein after signal peptide cleavage; in media, an additional slightly smaller band is present, which suggests additional processing (Fig. 3B). The relative ratios of the two bands are similar in media from keratinocytes transfected with either construct; however, the total amount of immunodetectable protein in media was significantly greater for CBD103DG23V5 as compared with that for CBD103V5 ($P = 0.0021$, Cochran-Mantel-Haenszel chi-square test).

Thus, loss of the N-terminal glycine from CBD103 does not affect intracellular processing but allows more of the mature protein to accumulate in the media and/or extracellular space.

CBD103 activity in vivo and in vitro

To further explore the function of *CBD103* in an experimental genetic system, we generated transgenic mice in which a cDNA encoding either the K^B or the k^y allele was driven by a strong and widely expressed promoter (22). We chose a genetic background that normally has Agouti-banded hairs and observed that two transgenic founders generated with the *CBD103* Δ G23 cDNA (the K^B allele) displayed a predominantly black coat with small patches of banded hair (Fig. 4). Unexpectedly, the normal *CBD103* cDNA (the k^y allele) also produced transgenic mice with a black coat in 20 out of 21 founders (Fig. 4). Furthermore, we observed that transgenic animals were smaller than their nontransgenic littermates. By 2 weeks of age, female transgenic animals were easily recognized by their dark coat and small size; in adult mice, reduced body weight persists in both males and females (fig. S7).

These considerations suggest three possible mechanisms by which CBD103 might act to modulate melanocortin signaling: (i) by binding to and activating the Mc1r, (ii) by binding to the Mc1r and preventing its inhibition by Agouti protein, or (iii) by binding to Agouti protein leading to its sequestration and/or degradation. To distinguish among these ideas, we generated synthetic forms of CBD103 and tested their ability to interact with the Mc1r and agouti signaling protein–YY (ASIP-YY), a synthetic version of the C terminus of Agouti protein that behaves as a competitive antagonist of α -MSH at the Mc1r and Mc4r (23).

The *CBD103* k^y allele predicts a mature peptide (after signal sequence cleavage) of 45 amino acids that contains six cysteine residues and begins with the glycine that is deleted in the K^B allele (Fig. 2B). The predicted signal sequence cleavage site is supported by biochemical studies of the orthologous human protein [known as DEFB103 or human β -defensin 3 (HBD3)] purified from human tissues (24). We synthesized the 45-residue k^y form and 44-residue K^B form of the dog protein (hence referred to as CBD103 and CBD103 Δ G23, respectively), allowed oxidative refolding, and used mass spectrometry and high-performance liquid chromatography to confirm recovery of a single congener with three intrachain disulfide bonds.

[Nle⁴, D-Phe⁷]- α -MSH (NDP-MSH), a potent derivative of α -MSH, stimulates robust accumulation of cyclic adenosine monophosphate (cAMP) in melanocytes (25). However, neither CBD103 nor CBD103 Δ G23 has any effect on cAMP accumulation (Fig. 5A), indicating that CBD103 is not a conventional Mc1r agonist. To test for receptor binding, we transiently transfected human embryonic kidney (HEK) 293 cells with Mc1r expression constructs (22) and used europium-labeled NDP-MSH (Eu-NDP-MSH) as a fluorescent tracer. We used saturation binding assays to first calculate the affinity of Eu-NDP-MSH for the dog Mc1r (Fig. 5B) and then carried out displacement assays with progressively increasing concentrations of CBD103, CBD103 Δ G23, or ASIP-YY. All three peptides exhibited qualitatively similar profiles characteristic for competitive binding to a single high-affinity site (Fig. 5C and Table 1). Quantitatively, inhibition constant (K_i) values estimated from the data depicted in Fig. 5C were 150.6 nM for CBD103 and 34.2 nM for CBD103 Δ G23. These estimates varied according to experimental conditions, but CBD103 Δ G23 consistently exhibited higher affinity for the dog Mc1r than did CBD103 (mean of fivefold across four paired experiments; Table 1). In these same experiments, ASIP-YY exhibited K_i values of 0.51 to 0.95 nM for the dog Mc1r, in the same range as reported previously for ASIP-YY at the human Mc1r (23). Using quantitative RT-PCR, we found that the levels of *CBD103* mRNA in total skin were ~300-fold greater than that of *Agouti* mRNA; to the extent that this difference reflects protein abundance, the levels of CBD103 Δ G23 in dog skin are likely to be much greater than those of Agouti

protein, which is consistent with a model in which CBD103 Δ G23 competitively inhibits the ability of Agouti protein to antagonize Mc1r signaling.

Finally, we investigated a potential interaction between Agouti protein and CBD103 by preincubating ASIP-YY with either CBD103 or CBD103 Δ G23 before the binding assay, and we found no evidence for a functional interaction (fig. S8). We also examined the effects of mixing the two peptides on two-dimensional nuclear magnetic resonance spectra and found no evidence for a structural interaction. Taken together, these observations indicate that CBD103 is a high-affinity ligand for the Mc1r and that the Δ G23 mutation may cause a black coat color in dogs via two different mechanisms: increased affinity for the Mc1r and increased availability of the mature protein in vivo.

Other mammals, other melanocortin receptors, and other defensins

Dogs are the only mammals known for which dominant inheritance of black coat color is not caused by a *Mc1r* mutation. However, we observed that both CBD103 and CBD103 Δ G23 are high-affinity ligands for the mouse (Fig. 5D) and the human (Fig. 5E) Mc1r, with estimated K_i values that were, unexpectedly, lower than that observed at the dog Mc1r (Table 1). Furthermore, unlike at the dog Mc1r, the affinity of CBD103 as compared to that of CBD103 Δ G23 was similar at both the mouse and the human Mc1r (Table 1), which may explain why expression of either allele caused a black coat in transgenic mice (Fig. 4).

Given the effects of the *CBD103* transgenes on body size, we investigated the potential for cross-talk between β -defensins and other melanocortin receptors. We found that CBD103 Δ G23 binds to the human Mc4r with an intermediate affinity ($K_i = 104.5$ nM) between that of CBD103 Δ G23 and CBD103 for the dog Mc1r (Table 1 and Fig. 5E). We also synthesized HBD3, the human ortholog of canine CBD103, and observed high-affinity binding ($K_i = 13.8$ nM) to the human Mc1r (Table 1 and Fig. 5F). Finally, we tested human β -defensin 1 (HBD1), which lies in the same cluster as HBD3 but is more distantly related; HBD1 also exhibited high-affinity binding to the human Mc1r ($K_i = 30$ nM) (Table 1 and Fig. 5F).

Defensins and melanocortin signaling

β -defensin genes exhibit strong signatures of diversifying selection (26,27), which is consistent with their proposed role as endogenous antibiotics. Confirming and studying this role in vivo, however, have been challenging; the results of mouse knockout experiments have been reported for only one gene, *Defb1*, and revealed no obvious effects on viability or innate defense (28). By contrast, the *CBD103* K^B mutation causes a marked change in hair color that is readily apparent among a large number of dog breeds with diverse genetic backgrounds. We propose that β -defensin genes play a broader role than currently envisaged, in which the ability to modulate melanocortin receptor signaling may have been selected during vertebrate evolution to provide camouflage and/or adaptive visual cues. From this perspective, evolutionary lability of the β -defensins with regard to both diversifying selection and copy number variation (26, 27,29) may represent a response to a shifting spectrum of environmental challenges that includes microbial pathogens, carnivorous predators, and nutrient availability. More generally, our biochemical studies indicate that at least two human β -defensins, HBD1 and HBD3, may also modulate melanocortin receptor signaling in vivo. Both genes are expressed by a broad range of epithelial and other tissues (18) and could therefore act not only on Mc1r but also on other melanocortin receptors, including Mc5r, for which an endogenous melanocortin ligand has not yet been identified. The range of K_i values that we observed suggests that CBD103 Δ G23, and potentially HBD1 or HBD3, modulate pigmentation in the low nanomolar range; however, the antimicrobial effects of β -defensins are typically observed in the low micromolar range (30). Finally, several β -defensins promote chemotaxis of immune cells, and although there is controversy regarding which receptors are involved, there is a growing

consensus that β -defensins contribute to adaptive as well as to innate immunity (31–33). From this perspective, several studies have pointed to a role for Mc1r signaling in immune cell function (34), which could be mediated by β -defensins acting as melanocortin receptor ligands.

Modulation of melanocortin receptor signaling by β -defensins may also help explain the apparent paradox that mutations of *Pomc* have a relatively minor effect on pigmentation (11, 35–37). These observations have been often interpreted as evidence that melanocortin receptors have high levels of constitutive activity, but our results suggest that β -defensins may raise “basal” levels of melanocortin receptor signaling in the absence of melanocortin peptides.

Much of the early work on melanocortin signaling was driven by ideas associated with the way in which *Pomc* had been discovered and named; additional biological functions of melanocortins in behavior and energy homeostasis did not become apparent for decades. An analogous situation may apply in the case of β -defensins, which underscores the utility of phenotype-driven genetics to provide an agnostic view of gene function.

Supplementary Material

Refer to Web version on PubMed Central for supplementary material.

References and Notes

1. Bennett DC, Lamoreux ML. *Pigment Cell Res* 2003;16:333. [PubMed: 12859616]
2. Barsh, GS. *The Pigmentary System*. Nordlund, JJ., et al., editors. Oxford: Blackwell; 2006. p. 395-410.
3. Chhajlani V, Wikberg JE. *FEBS Lett* 1992;309:417. [PubMed: 1516719]
4. Mountjoy KG, Robbins LS, Mortrud MT, Cone RD. *Science* 1992;257:1248. [PubMed: 1325670]
5. Robbins LS, et al. *Cell* 1993;72:827. [PubMed: 8458079]
6. Millar SE, Miller MW, Stevens ME, Barsh GS. *Development* 1995;121:3223. [PubMed: 7588057]
7. Bultman SJ, Michaud EJ, Woychik RP. *Cell* 1992;71:1195. [PubMed: 1473152]
8. Miller MW, et al. *Genes Dev* 1993;7:454. [PubMed: 8449404]
9. Ollmann MM, Lamoreux ML, Wilson BD, Barsh GS. *Genes Dev* 1998;12:316. [PubMed: 9450927]
10. Klungland H, Vage DI. *Ann. N.Y. Acad. Sci* 2003;994:331. [PubMed: 12851333]
11. Slominski A, et al. *Endocrinology* 2005;146:1245. [PubMed: 15564334]
12. Wright S. *J. Hered* 1917;8:224.
13. Little, CC. *The Inheritance of Coat Color in Dogs*. Ithaca, NY: Comstock; 1957.
14. Kerns JA, et al. *Genetics* 2007;176:1679. [PubMed: 17483404]
15. Sampson, J.; Binns, MM. *The Dog and Its Genome*. Ostrander, EA.; Giger, U.; Lindblad-Toh, K., editors. Cold Spring Harbor, NY: Cold Spring Harbor Laboratory Press; 2005. p. 19-30.
16. Patil AA, Cai Y, Sang Y, Blecha F, Zhang G. *Physiol. Genomics* 2005;23:5. [PubMed: 16033865]
17. Ganz T. *Nat. Rev. Immunol* 2003;3:710. [PubMed: 12949495]
18. Pazgier M, Hoover DM, Yang D, Lu W, Lubkowski J. *Cell. Mol. Life Sci* 2006;63:1294. [PubMed: 16710608]
19. Newton JM, et al. *Mamm. Genome* 2000;11:24. [PubMed: 10602988]
20. Kerns JA, et al. *Mamm. Genome* 2004;15:798. [PubMed: 15520882]
21. Lindblad-Toh K, et al. *Nature* 2005;438:803. [PubMed: 16341006]
22. For further details, see the Supporting Online Material
23. McNulty JC, et al. *J. Mol. Biol* 2005;346:1059. [PubMed: 15701517]
24. Harder J, Bartels J, Christophers E, Schroder JM. *J. Biol. Chem* 2001;276:5707. [PubMed: 11085990]
25. Sawyer TK, et al. *Proc. Natl. Acad. Sci. U.S.A* 1980;77:5754. [PubMed: 6777774]
26. Semple CA, Gautier P, Taylor K, Dorin JR. *Mol. Divers* 2006;10:575. [PubMed: 16969721]
27. Hughes AL. *Cell. Mol. Life Sci* 1999;56:94. [PubMed: 11213266]

28. Morrison G, Kilanowski F, Davidson D, Dorin J. *Infect. Immun* 2002;70:3053. [PubMed: 12010997]
29. Hollox EJ, Armour JA, Barber JC. *Am. J. Hum. Genet* 2003;73:591. [PubMed: 12916016]
30. Chen H, et al. *Peptides* 2006;27:931. [PubMed: 16226346]
31. Yang D, et al. *Science* 1999;286:525. [PubMed: 10521347]
32. Soruri A, Grigat J, Forssmann U, Riggert J, Zwirner J. *Eur. J. Immunol* 2007;37:2474. [PubMed: 17705135]
33. Biragyn A, et al. *Science* 2002;298:1025. [PubMed: 12411706]
34. Luger TA, Scholzen TE, Brzoska T, Bohm M. *Ann. N.Y. Acad. Sci* 2003;994:133. [PubMed: 12851308]
35. Yaswen L, Diehl N, Brennan MB, Hochgeschwender U. *Nat. Med* 1999;5:1066. [PubMed: 10470087]
36. Challis BG, et al. *Proc. Natl. Acad. Sci. U.S.A* 2004;101:4695. [PubMed: 15070780]
37. Smart JL, Low MJ. *Ann. N.Y. Acad. Sci* 2003;994:202. [PubMed: 12851317]
38. Single-letter abbreviations for the amino acid residues are as follows: A, Ala; C, Cys; D, Asp; E, Glu; F, Phe; G, Gly; H, His; I, Ile; K, Lys; L, Leu; M, Met; N, Asn; P, Pro; Q, Gln; R, Arg; S, Ser; T, Thr; V, Val; W, Trp; and Y, Tyr.
39. This work was supported by grants from NIH to G.S.B. and to G.L.M. and by a grant from the Donald E. and Delia B. Baxter Foundation to S.I.C. We thank H. Manuel for technical assistance; Y. Kobayashi and the Stanford Transgenic Facility for advice and help with transgenic experiments; D. Bennett for melan-a cells; Y.-K. Yang for providing the Mcr expression constructs; E. A. Ostrander for providing some of the samples; and the dog owners and breeders who generously submitted DNA samples.

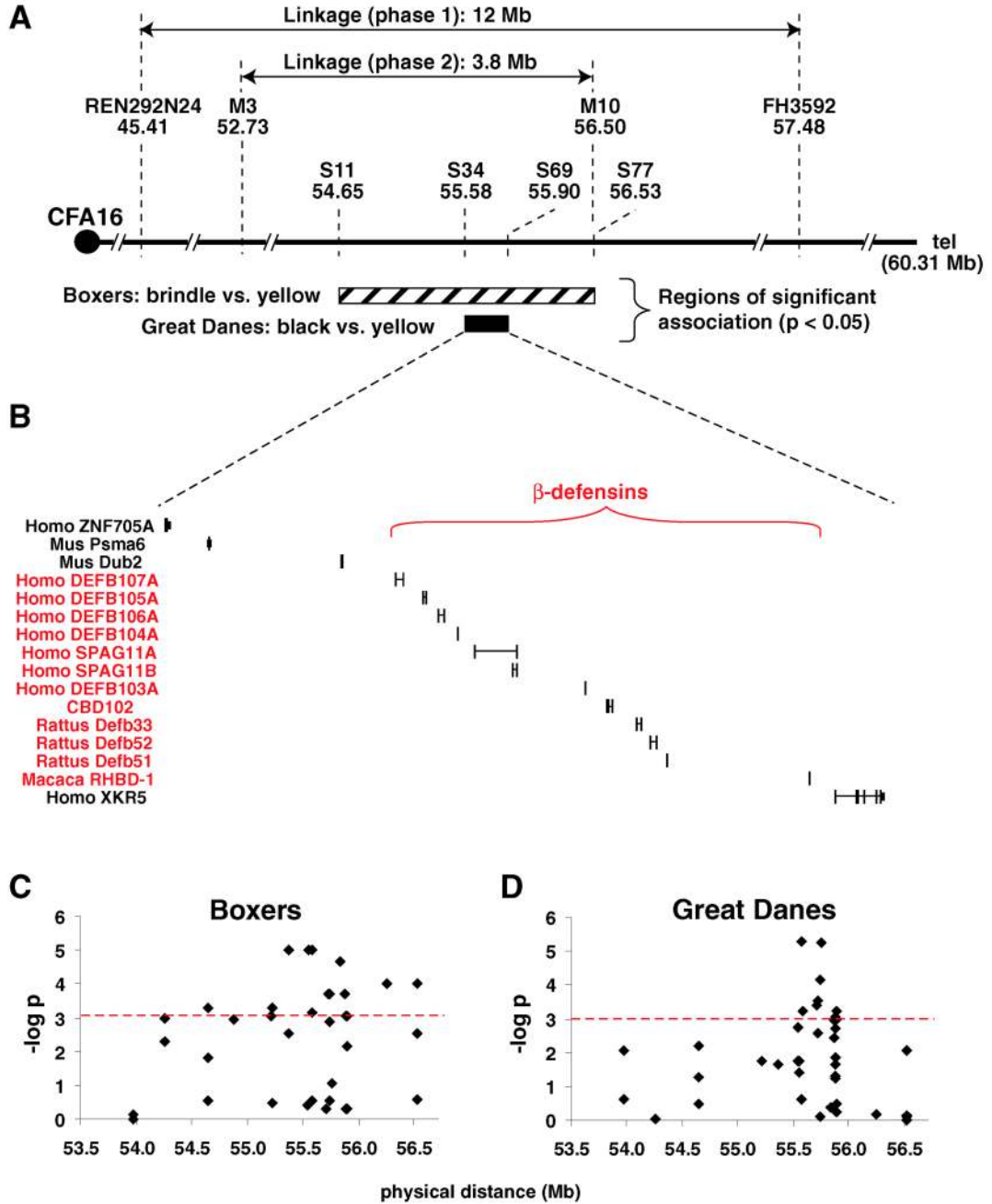


Fig 1. Genetic mapping of the *K* locus. (A) Initial linkage studies [phase 1, (14)] defined a 12-Mb critical region for *K^B*; ascertainment and characterization of additional kindreds narrowed the interval to 3.8 Mb (phase 2, figs. S1 to S4). Association analysis for 60 markers in brindle ($n = 12$) versus yellow ($n = 10$) Boxers, and for 51 markers in black ($n = 9$) versus yellow ($n = 10$) Great Danes, was carried out as described in the text. (B) Candidate genes in the 320-kb region of greatest association in Great Danes; this region includes 12 β -defensin genes (shown in red). (C and D) Significance, plotted as $-\log$ of P values from a chi-square test of allele counts, is shown as a function of distance along CFA16 (only for SNPs present at greater than 10% frequency and genotyped in at least 75% of the samples). The dashed red line indicates

a Bonferroni-corrected 5% significance level; these regions are indicated by hatched and black bars for Boxers and Great Danes, respectively, in (A). Annotation is based on the Non-dog RefSeq track in the UCSC Genome Browser, except for CBD102, identified by Patil *et al.* (16).

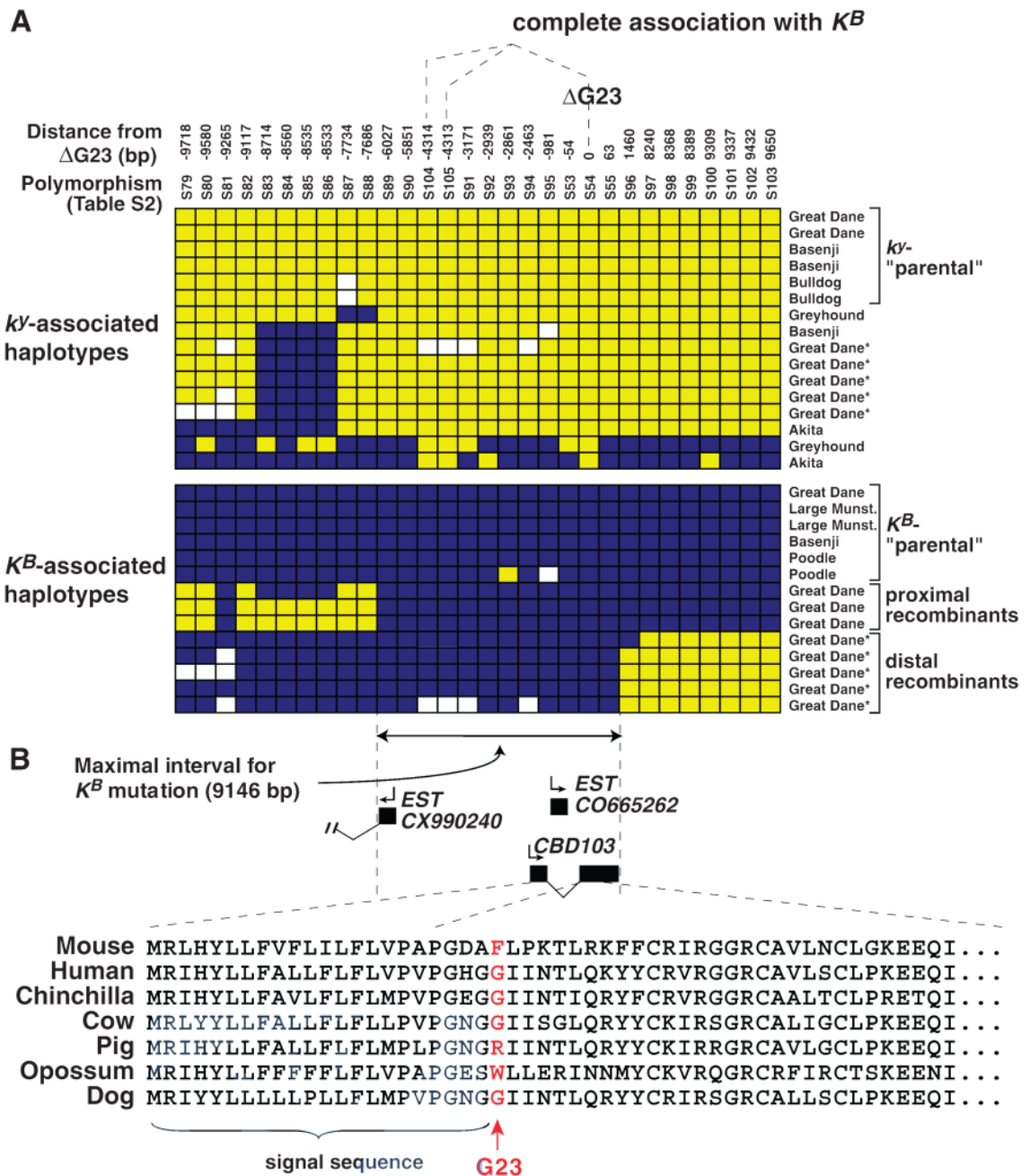
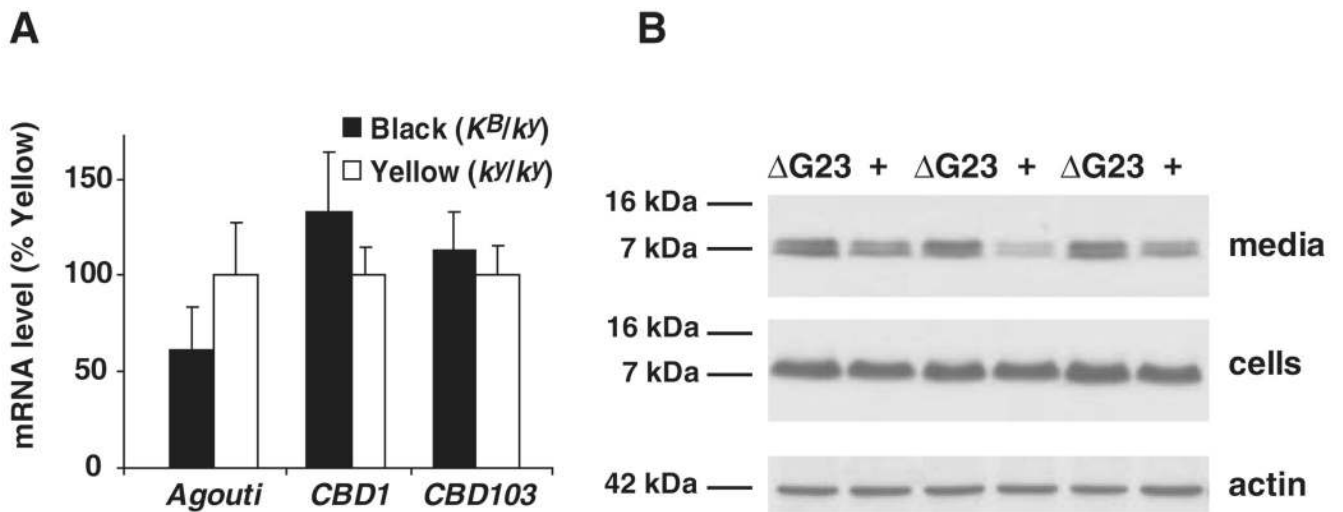


Fig 2. Resequencing and recombinant haplotype-based mutation analysis for K^B -bearing versus k^Y -bearing chromosomes. (A) A 20-kb region surrounding $CBD103\Delta G23$ was resequenced (except for repetitive regions) in 10 dogs from 7 breeds, and haplotypes were inferred for 28 high-frequency biallelic polymorphisms. Blue and yellow squares represent the major and minor alleles in K^B -bearing chromosomes, respectively, and allow some haplotypes to be designated as " k^Y -parental," " K^B -parental," or "proximal recombinant," as indicated. White squares represent missing data. Genotypes for five Great Danes (denoted by asterisks) were determined in a second resequencing round targeted specifically for distal recombinants as described in the SOM text. Within the 9.1-kb interval defined by recombinant haplotype

analysis, three polymorphisms are completely associated with K^B versus k^y , as indicated in the upper part of the figure. **(B)** Exon structure of transcripts within the maximal candidate interval and alignment of selected CBD103 orthologs (38).

**Fig 3.**

Expression of β -defensin mRNA and protein in skin and in cultured keratinocytes. (A) Levels of *Agouti*, *CBD1*, or *CBD103* mRNA from black or yellow dog skin, as indicated, determined relative to *Bactin* by quantitative RT-PCR, and expressed as percentage of mRNA present in the yellow samples. Results shown represent the mean \pm SEM of four different animals. (B) Expression of epitope (V5)-tagged CBD103 (+) or epitope (V5)-tagged CBD103 Δ G23 (Δ G23) in cell layer and media after transfection of mouse keratinocytes as determined by Western blotting with antisera against the V5 epitope. Representative results are shown for one of four experiments; for each experiment, the two constructs were transfected in triplicate or quadruplicate.

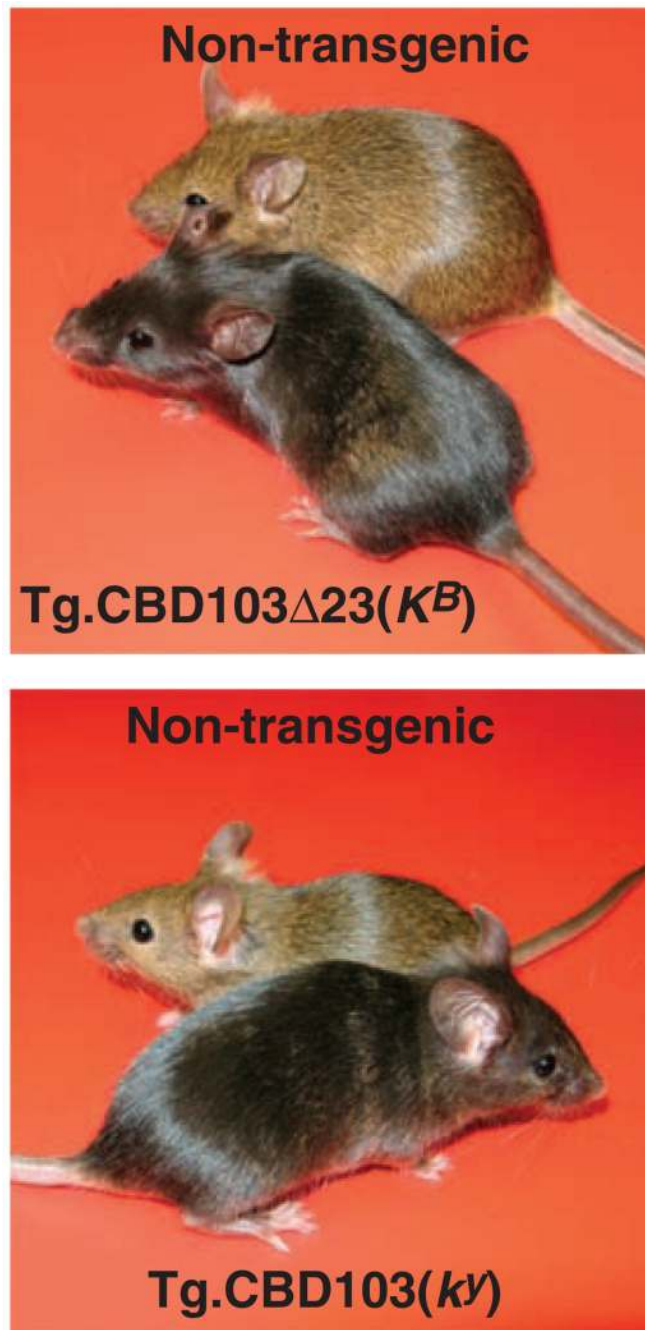
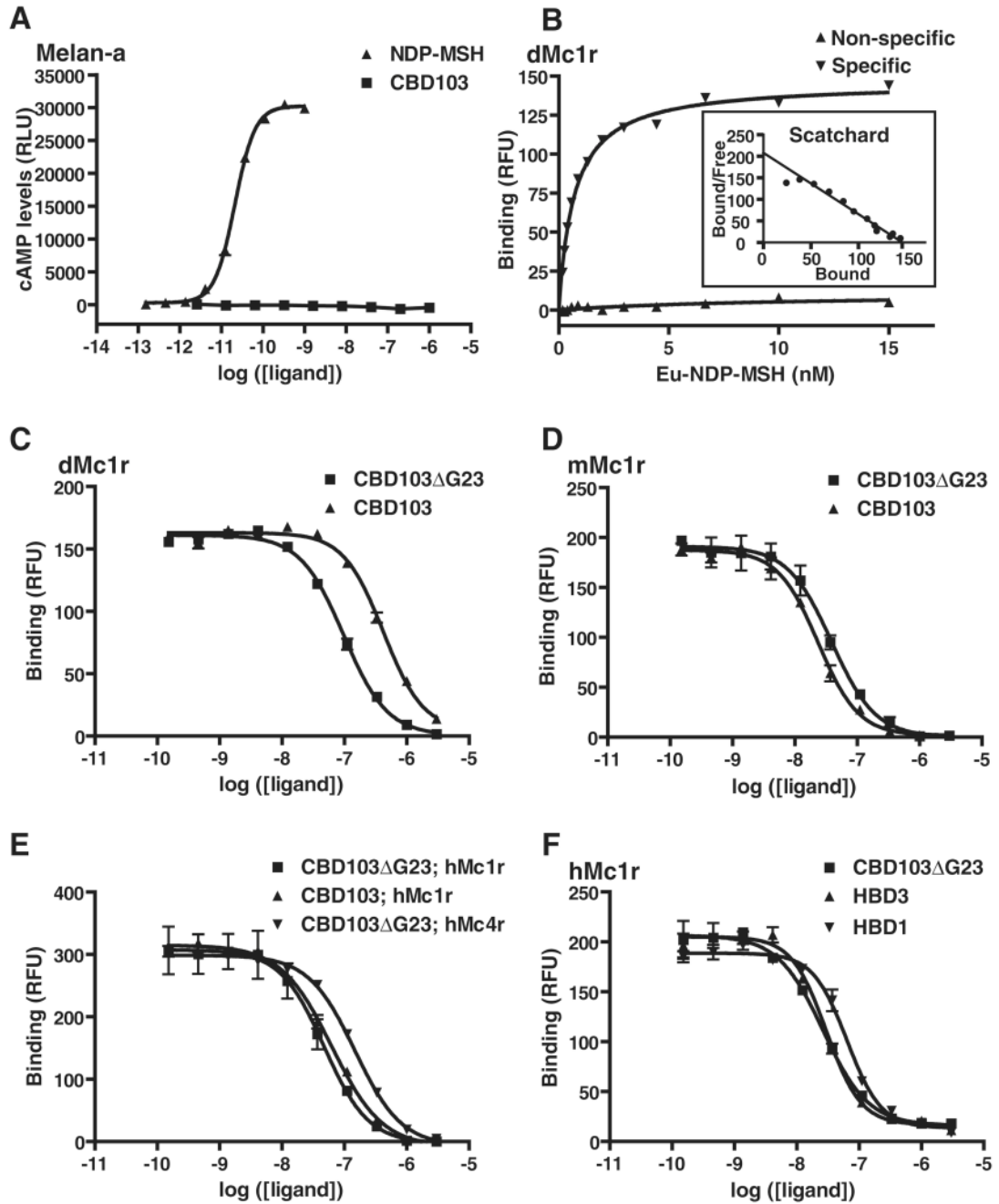


Fig 4. Pigmentary effects of *CBD103* in transgenic mice. Photographs of transgenic (Tg) and non-transgenic littermates, representative of 2/2 independent founders for Tg.CBD103 Δ G23 and 20/21 independent founders for Tg.CBD103.

**Fig 5.**

Pharmacology of β -defensin action on melanocortin receptors. **(A)** Ability of NDP-MSH or CBD103 to stimulate cAMP accumulation in cultured melanocytes. **(B)** Saturation binding of Eu-NDP-MSH to HEK293 cells transiently transfected with the dog Mc1r. **(C to F)** Competition binding assays in which varying amounts of unlabeled synthetic β -defensins were added together with Eu-NDP-MSH tracer (at 1.8 to 3 nM) to HEK293 cells transiently transfected with dog (d), mouse (m), or human (h) melanocortin receptors, as indicated. In all panels, ligand concentration {either in nM (B) or log of the molarity [(A) and (C) to (F)]} is plotted on the abscissa; amount of cAMP formed (A) or Eu-NDP-MSH bound [(B) to (F)], measured, respectively, as relative light units (RLUs) or relative fluorescent units (RFUs), is

plotted on the ordinate. Each curve represents a single experiment carried out in triplicate; error bars represent SEM.

Table 1

Affinity constants for melanocortin receptor ligands. In the column for Eu-NDP-MSH, saturation binding assays as depicted in Fig. 5B were used to derive dissociation constant (K_D) values (in nM) by fitting the data to a hyperbolic dose-response curve with the use of nonlinear regression. In the remaining columns, displacement binding assays as depicted in Fig. 5, C to F, were used to derive K_i values (in nM) by fitting the data to a sigmoidal dose-response curve with variable slope. For some ligand-receptor combinations, multiple experiments were carried out, in which case the mean K_i value is given followed by the range and number (in parentheses) of the separate experiments. ND, not determined.

Receptor	Eu-NDP-MSH	ASIP-YY	CBD103AG23	CBD103	HBD1	HBD3
Dog Mc1r	0.70	0.59 (0.51–0.95) (n = 3)	37.0 (16.4–61.1) (n = 5)	221.0 (150.6–398.7) (n = 4)	ND	ND
Mouse Mc1r	1.38	2.30	15.1 (12.4–17.0) (n = 4)	9.7 (8.9–10.4) (n = 2)	ND	ND
Human Mc1r	2.59	0.95	19.6 (12.3–26.8) (n = 2)	35.5	30.0	13.8
Human Mc4r	3.17	0.82	104.5	ND	ND	ND