

 Open access • Journal Article • DOI:10.1080/00207543.2018.1559961

A circularity measurement toolkit for manufacturing SMEs — [Source link](#)

Jose Arturo Garza-Reyes, Ailin Salomé Valls, Simon Peter Nadeem, Anthony Anosike ...+1 more authors

Institutions: University of Derby, University of Warwick, University of the West of England

Published on: 02 Dec 2019 - International Journal of Production Research (Taylor & Francis)

Related papers:

- [The Circular Economy – A new sustainability paradigm?](#)
- [Conceptualizing the circular economy: An analysis of 114 definitions](#)
- [A taxonomy of circular economy indicators](#)
- [Towards circular economy implementation: a comprehensive review in context of manufacturing industry](#)
- [Measuring circular economy strategies through index methods: A critical analysis](#)

Share this paper:    

View more about this paper here: <https://typeset.io/papers/a-circularity-measurement-toolkit-for-manufacturing-smes-2iq1783riw>

Ecology and morphology of the dwarf bromeliad boa *Ungaliophis panamensis* (Squamata, Boidae, Ungaliophiinae) in Costa Rica and Panama

Todd R. Lewis¹, Rowland K. Griffin², Irune Maguregui Martin³,
Alex Figueroa⁴, Julie M. Ray⁵, Josh Feltham⁶, Paul B. C. Grant⁷

1 UWE Bristol – Frenchay Campus, Coldharbour Ln, Bristol, BS16 1QY, UK

2 Indigo Expeditions, 37 Chamberlain St., Wells, Somerset, BA5 2PQ, UK

3 Estación Biológica Caño Palma, Tortuguero, Limón, Costa Rica

4 Department of Biological Sciences, University of New Orleans, 2000 Lakeshore Drive, New Orleans, LA 70148, USA

5 Department of Biology, University of Nevada-Reno, 1664 North Virginia Street, Reno, NV 89557, USA

6 Fleming College, 200 Albert St S., Lindsay, Ontario, K9V 5E6, Canada

7 4901 Cherry Tree Bend, Victoria, British Columbia, V8Y 1S1, Canada

Corresponding author: Todd R. Lewis (Todd.Lewis@uwe.ac.uk)

Academic editor: A.M. Leal-Zanchet | Received 21 August 2020 | Accepted 1 May 2021 | Published 18 May 2021

Citation: Lewis TR, Griffin RK, Martin IM, Figueroa A, Ray JM, Feltham J, Grant PBC (2021) Ecology and morphology of the dwarf bromeliad boa *Ungaliophis panamensis* (Squamata, Boidae, Ungaliophiinae) in Costa Rica and Panama. *Neotropical Biology and Conservation* 16(2): 317–331. <https://doi.org/10.3897/neotropical.16.e57872>

Abstract

Ecological and morphological data on *Ungaliophis panamensis* is extremely limited as this species is rarely encountered. These knowledge gaps have been advanced in this study where data was analysed from a small sample of snakes collected in two tropical forested environments in Costa Rica and Panama. Standardised major axis testing and a Bayesian latent variable ordination revealed that the species is sexually dimorphic, closely associated with tree trunks in natural forested areas, and occasionally discovered in rural buildings. Although further investigation into its natural history is warranted, this study shows that even with just a few individuals it is possible to elucidate ecological information that is relevant to the conservation of snake species.

Keywords

Bromeliad Boa, ecology, habitat, Latent Variable Ordination, snake, tropical forest, *Ungaliophis*

Introduction

The natural history of tropical snakes is often little understood. This is due in part to their cryptic behaviour and remarkable camouflage, which results in infrequent detection and is a frequent issue for snake biologists (Durso and Seigel 2015; Shelton et al. 2018). The genus *Ungaliophis* consists of two species that are restricted to tropical Mesoamerica; they are considered highly cryptic and very little data exists regarding their natural history (Bogert 1968; Savage 2002; Köhler 2008). The northern species, *U. continentalis*, is found from southern Mexico to northern Nicaragua, whereas the southern species, *U. panamensis*, occurs from southern Nicaragua to northwestern Colombia (Villa and Wilson 1990). The genus was first described in 1880 by Müller who designated an individual from Guatemala as *Ungaliophis continentalis* (Savage 2002). It was not until 1933 that Schmidt described the species *U. panamensis*. Furthermore, *U. panamensis* was not confirmed from Costa Rica until 1974 (Corn 1974).

Since then, very little has been reported about the ecology and natural history of either species. The little data that exists regarding the natural history of either species of *Ungaliophis* strongly suggests that they are arboreal species found from lowland rainforests to high elevation cloud forests (Köhler 2008). Corn (1974) found several individuals of *U. panamensis* in banana plants and bromeliads. As such, many authorities believe that *Ungaliophis* naturally occurs in dense epiphytic growth in the tree canopy. Both species of *Ungaliophis* are small snakes capable of reaching between 470 mm and 482 mm in total length (Köhler 2008). Historically, the diet of wild *Ungaliophis* was unknown; however, several recent publications regarding the diet of *U. panamensis* in Costa Rica have included observations of bats (Solórzano and Carillo 2017), birds (Dwyer 2017), and geckos (Espinoza and Barrio-Amorós 2018) being taken by the species. *Ungaliophis continentalis* have been recorded to give birth to between 5 to 6 neonates per clutch in captivity (Ross and Marzec 1990; Burger and Ford 2007). While there is no information regarding reproduction of *U. panamensis*, it is likely to be similar to its sister species.

Identifying the habitat preferences of a given species is critical to understanding the extent of functional habitat available to that species in the wider landscape (Ocampo-Peñuela et al. 2020). Effective conservation strategies can be built once the available habitat for a species, or assemblage, has been quantified and understood (Riva and Nielsen 2020). Herein, we describe the microhabitat preferences and morphometry of 13 individuals of *U. panamensis*, ten of which were encountered in Barra del Colorado Wildlife Refuge in northeastern Costa Rica, and three from the Coclé and Panamá Oeste provinces of Panama. We hypothesise that *U. panamensis* has an association with natural forest habitats and that its morphology does not influence its habitat preference.

Methodology

Study area

Individuals of *U. panamensis* were recorded across multiple locations within the Barra del Colorado Wildlife Refuge (BCWR) in the NE region of Costa Rica (Fig. 1), and from Coclé and Panamá Oeste provinces, Panama (Fig. 2). The BCWR region is dominated by lowland tropical wet forest (Holdridge 1967) and *Manicaria* (Arecaceae) swamp forests (Myers 1990; Lewis et al. 2010). The regional habitat in both Coclé and Panamá Oeste, Panama, is mid-elevation mature secondary cloud forest and primary premontane cloud forest (Ray et al. 2012; Ray 2015).

Field methods

Data collected for this study involved a pool of surveys that were performed from multiple longer term studies spanning 1997–2012 (Ray 2009; Lewis et al. 2011; Lewis et al. 2013; Zipkin et al. 2020). Most individuals were detected using visual encounter surveys in forested environments (Heyer et al. 1994; Lovich et al. 2012). However, some were observed by chance encounter in ceiling rafters of buildings and others reported to us by local people. Surveys at both sites were conducted from November 2005 to September 2008, between 20:00 and 02:00 in a variety of habitats: canal edge areas, deep forest and riparian gallery forest. Surveys averaged three surveyors and were conducted four nights a week for up to six hours per survey.

Biometric data comprised sex determined by careful probing and examination of the anal spurs, snout-vent length (SVL, mm), tail length (TL, mm) and mass (g). Microhabitat data comprised observations where the snake was located. If the individual was in Forest, specific substrate classes were recorded (Tree, Palm, Shrub), along with relevant structural features (Trunk, Leaf, Branch, Twig). Although infrequent, when snakes were found in rural environments, often buildings, they were assigned their own identity (Buildings).

Data analysis

Encounter rates of *U. panamensis* at both sites were calculated by dividing the number of individuals by the number of surveys and multiplying by 100, a technique adapted from Kiszka et al. (2007). For the purposes of exploring patterns of association between the morphology of *U. panamensis* and its microhabitat preferences we considered individuals to be the sampling unit.

The morphometric relations of *U. panamensis* were analysed using Standardised Major Axis (SMA) estimation created by the function SMA within the package smatr within the program R (Warton et al. 2012a; R Core Team 2020). An advantage

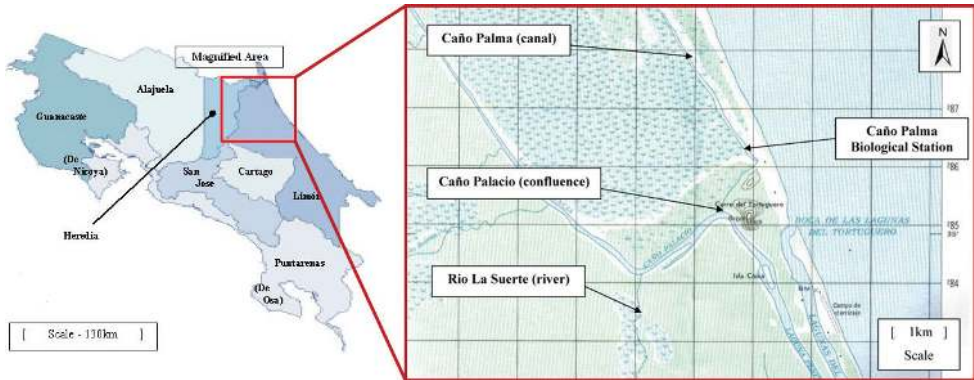


Figure 1. Location of sampled area, Barra del Colorado Wildlife Refuge, Limón, Costa Rica.

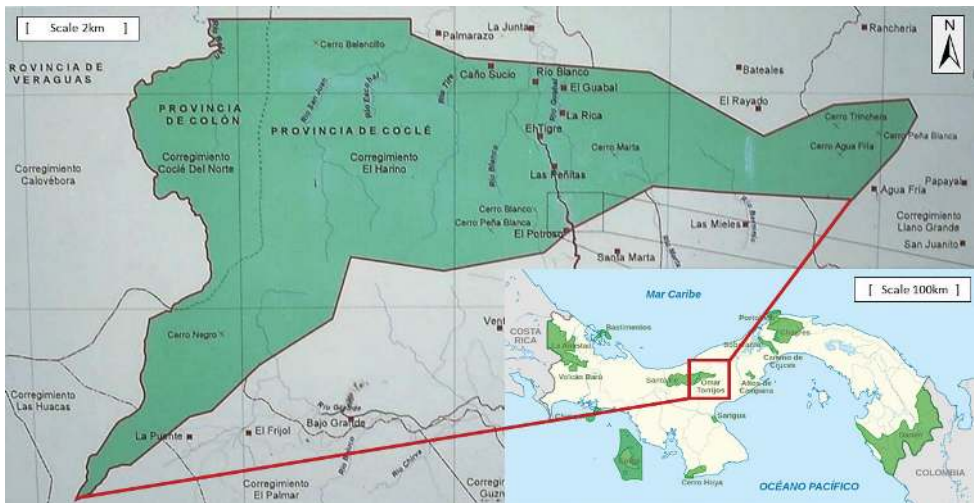


Figure 2. Location of sampled area, El Cope in Parque Nacional G. D. Omar Torrijos Herrera, in the Coclé and Panamá Oeste provinces of Panama.

of using SMA to test for common slope allometric relations is its inclusion of fitting factor groups for y against x (Warton and Weber 2002). We also utilised Huber's M estimation in place of a least squares method using the robust function in *smatr* in order to make the fit more inclusive for marginal outliers (Taskinen and Warton 2011). Likelihood ratio tests evaluated the slope fit.

We chose to use a multivariate Bayesian, instead of univariate or distance based, approach for ecological analysis. This was because transforming data to meet assumptions for univariate and distance based approaches is problematic for smaller data sets (Warton et al. 2012b; Warton 2017). Microhabitat data were therefore analysed using a Bayesian unconstrained ordination based on a latent variable model (LVM) (Hui et al. 2015) using the package *Boral* (Hui 2016). Bayesian LVM's are

useful at explaining multivariate composition while accounting for residual correlation. They are superior to non-metric multidimensional scaling (NMDS) because they make provision for possible mean-variance relationships in data without confounding location with dispersion (Warton et al. 2012b; Hui et al. 2015). Boral fits three types of model; 1) Covariates with no latent variables (fitting independent response GLMs where columns of y are assumed independent); 2) With no covariates (a pure LVM that constructs unconstrained ordination); and 3) Combined covariates with latent variables (fitting correlated response GLMs, with latent variables). We explored *U. panamensis* microhabitat preference using modelling option 2. The model comprised the following;

Option 2 (pure LVM),

$$\log(\mu_{ij}) = \alpha + \Theta_{0j} + z_{i1} \times \Theta_{j1} + z_{i2} \times \Theta_{j2} = \alpha + \Theta_{0j} + z_i^T \Theta_j,$$

where μ_{ij} is considered the mean response at microhabitat level i for an individual snake j , Θ_{0j} is the individual-specific intercept, $z_i = (z_{i1}, z_{i2})^T$ is a vector of two latent variables, and $\Theta_j = (\Theta_{j1}, \Theta_{j2})^T$ are the corresponding individual-specific coefficients. This modelling approach enabled biplots to visualise the data in a similar way to a two-dimensional NMDS. From the model we extracted posterior median values of latent variables and used these as coordinates on ordination axes to plot microhabitat association (Hui et al. 2015).

For Boral models, estimation is performed using Bayesian Markov Chain Monte Carlo (MCMC) methods via software JAGS (Plummer 2003). Our model comprised two latent variables, used a negative binomial family, ran 40000 iterations with 10000 discarded for burn-in, and was thinned by 30. Priors were set using Boral's modest automated uniform normal distribution detected and set through JAGS (priors = \sim dnorm (0,0.1)). Convergence was assessed using MCMC trace plots retrieved from package Coda and inspection of Geweke convergence diagnostic (Geweke 1992), a test which is similar to the Gelman statistic potential scale reduction factor (PSRF) (Gelman et al. 2013), but applicable given Boral operates with only a single MCMC chain (Hui 2016). Model assumptions of mean-variance and log-linearity were examined using Dunn-Smyth residuals vs. fit plots and normal quantile plots (Dunn and Smyth 1996).

Correlation and residual correlation were checked by plotting a residual covariance matrix of latent variable regression coefficients using function `get.residual.cor` in Boral and package `Corrplot`. A strong residual covariance/correlation between factor variables can be interpreted as evidence of autocorrelation in a model; however, acceptable levels have been recognised as indicative of an interaction/association (Pollock et al. 2014). The residual precision matrix in Boral can be used to directly identify association between factors (in our case microhabitats and individual snakes) (Ovaskainen et al. 2016). Two factors exhibiting a zero result in such plots may remain correlated, indicating they do not directly interact, but also can remain correlated through other factors. Residual precision matrix results should

not exhibit elements equal to exactly 1 or -1 (suggesting strong autocorrelation). Nevertheless, relatively large values between these limits of precision imply a useful indication of a correlated relationship between two factors.

All analyses were carried out in the program R version 4.0.0. (R Core Team 2020) which we attached to JAGS version 4.3.0 for performing Bayesian routines.

Results

Our dataset comprised microhabitat and morphological data for a small number of individuals ($N = 13$) (Table 1). In BCWR 258 surveys over an 8-year period yielded 10 individuals (an encounter rate of: 3.88) (Fig. 3). In Coclé and Panamá Oeste 1107 surveys over a 15-year period yielded 3 individuals (an encounter rate of: 0.27) (Fig. 4). This highlights just how poorly detected the *U. panamensis* is in the wild. Eight were found during surveys, three by random encounter, and two were brought to us by locals. A small specimen encountered, from Costa Rica (possibly juvenile) was removed from the analysis to avoid bias in the models. This snake measured 162 mm SVL, 29 mm TL, and weighed 2.5 g, and was encountered on a palm frond at a height of 76 cm. Inspection of morphometric data via boxplots showed a difference in the means of SVL and TL between males and females. However, boxplot distribution overlapped, indicating that such mean difference may not be necessarily statistically significant. Adult male snakes were longer in both SVL and TL, but adult females had the greatest mass despite mean differences in mass being equal (Fig. 5, Table 1). SMA showed that variables grouped by sex were uncorrelated; Females ($R^2 = 0.67$, $P < 0.05$), Males ($R^2 = 0.73$, $P < 0.05$). SMA slopes were unequal (LRT 0.48, $P = 0.48$) indicating a sexual difference in body size. The SVL/Mass [log scale] plot revealed females were subtly larger than males due to having greater mass (Fig. 6). Slope fit was checked via residuals and q-plots and deemed acceptable given the small data size (Fig. 6).

The LVM in Boral successfully computed with useful convergence (see: Suppl. material 1: Convergence trace plots). The Option 2 model (correlated response) resulted in a fairly low DIC (122.6) and a sufficient residual trace correlation test result (104.79). All Geweke Z-score p-values for both models were >0.05 (results of <0.05 is approximately equivalent to a PSRF of 1.96 which would exceed MCMC Geweke upper values and indicate poor convergence). Residual plots of model fit showed good distribution of linear predictors indicating minimal over-dispersion (Fig. 7).

The primary latent variable ordination plot for the model showed preference by *U. panamensis* for natural microhabitat features and clustered latent variables proximate to corresponding snake microhabitats (Fig. 8). Whilst buildings were utilised by five *U. panamensis* individuals as refuge and foraging sites, they were distally associated in the ordination with those snakes detected in natural microhabitats. It is important to note that the buildings these five individuals were found in were situated in very remote areas, surrounded by natural habitat and not within higher density urban areas. The plot also showed discrimination of Tree, Trunk and Leaf

Table 1. Morphological and ecological data for 13 individuals of *Ungaliophis panamensis* from Costa Rica and Panama.

| Individual | Country | Province | Date | Encounter | Sex | SVL | TL | Mass | Arboreal | Terrestrial | Forest | Building | Trunk | Leaf | Branch | Twig | Tree | Palm | Shrub | |
|------------|------------|--------------|------------|-----------|-----|------|-----|------|----------|-------------|--------|----------|-------|------|--------|------|------|------|-------|---|
| #UPCR01 | Costa Rica | Limón | 1/3/2004 | Nocturnal | ♂ | 394 | 52 | 16.6 | 1 | 0 | 0 | 1 | 0 | 0 | 0 | 0 | 0 | 0 | 0 | |
| #UPCR02 | Costa Rica | Limón | 8/23/2009 | Nocturnal | ♀ | 300 | 33 | 15.9 | 1 | 0 | 0 | 1 | 0 | 0 | 0 | 0 | 0 | 0 | 0 | |
| #UPCR03 | Costa Rica | Limón | 12/20/2009 | Nocturnal | ♀ | 320 | 30 | 19.3 | 0 | 1 | 1 | 0 | 1 | 0 | 0 | 0 | 1 | 0 | 0 | |
| #UPCR04 | Costa Rica | Limón | 1/19/2010 | Nocturnal | ♂ | 285 | 54 | 11.5 | 0 | 1 | 0 | 1 | 0 | 0 | 0 | 0 | 0 | 0 | 0 | |
| #UPCR05 | Costa Rica | Limón | 7/9/2010 | Nocturnal | ♂ | 355 | 51 | 18.3 | 0 | 1 | 0 | 1 | 0 | 0 | 0 | 0 | 0 | 0 | 0 | |
| #UPCR06 | Costa Rica | Limón | 8/11/2010 | Nocturnal | ♀ | 323 | 42 | 16.1 | 0 | 1 | 0 | 1 | 0 | 0 | 0 | 0 | 0 | 0 | 0 | |
| #UPCR07 | Costa Rica | Limón | 2/10/2011 | Nocturnal | ♀ | 319 | 36 | 14.5 | 1 | 0 | 1 | 0 | 1 | 0 | 0 | 0 | 1 | 0 | 0 | |
| #UPCR08 | Costa Rica | Limón | 2/14/2011 | Nocturnal | ♂ | 473 | 49 | 22.5 | 1 | 0 | 1 | 0 | 1 | 1 | 0 | 0 | 1 | 0 | 0 | |
| #UPCR09 | Costa Rica | Limón | 3/9/2011 | Nocturnal | ♂ | 396 | 49 | 14.5 | 1 | 0 | 1 | 0 | 0 | 0 | 1 | 0 | 0 | 1 | 0 | |
| #UPCR10* | Costa Rica | Limón | 3/9/2011 | Nocturnal | ♂ | 16.2 | 2.9 | 2.5 | 1 | 0 | 1 | 0 | 0 | 1 | 0 | 0 | 0 | 0 | 1 | 0 |
| #UPPA01 | Panama | Cocle | 11/1/2005 | Nocturnal | ♀ | 419 | 62 | 23.1 | 1 | 0 | 1 | 0 | 0 | 0 | 1 | 0 | 0 | 0 | 0 | |
| #UPPA02 | Panama | Panama Oeste | 6/24/2006 | Nocturnal | ♂ | 415 | 64 | 19.2 | 0 | 1 | 1 | 0 | 0 | 0 | 0 | 0 | 0 | 0 | 0 | |
| #UPPA03 | Panama | Cocle | 9/21/2008 | Nocturnal | ♀ | 447 | 72 | 21 | 1 | 0 | 1 | 0 | 0 | 1 | 0 | 0 | 0 | 0 | 1 | |

*Excluded from analysis.

**Figure 3.** Photographs depicting two individuals of *Ungaliophis panamensis* from Barra del Colorado Wildlife Refuge in Limón, northeastern Costa Rica: individuals UPCR07 (A) and UPCR08 (B). Photographs taken by Alex Figueroa.**Figure 4.** Photographs depicting two individuals of *Ungaliophis panamensis* from El Cope in Parque Nacional G. D. Omar Torrijos Herrera, in the Coclé and Panamá Oeste provinces of Panama: individuals UPPA01 (A) and UPPA02 (B). Photographs taken by Julie M. Ray.

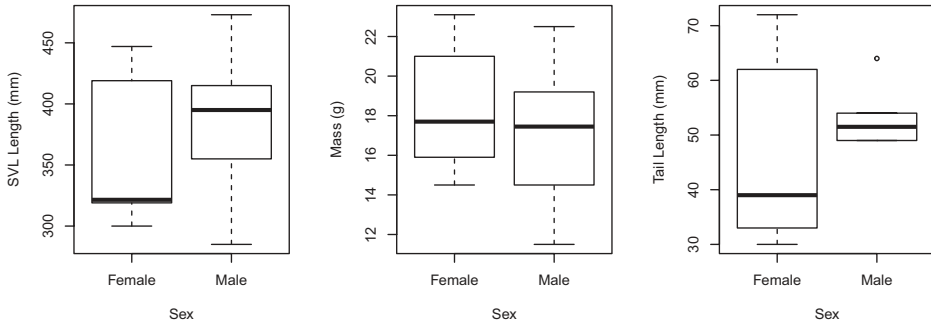


Figure 5. Boxplots of the morphometrics of female (n=5) and male (n=7) *Ungaliophis panamensis*.

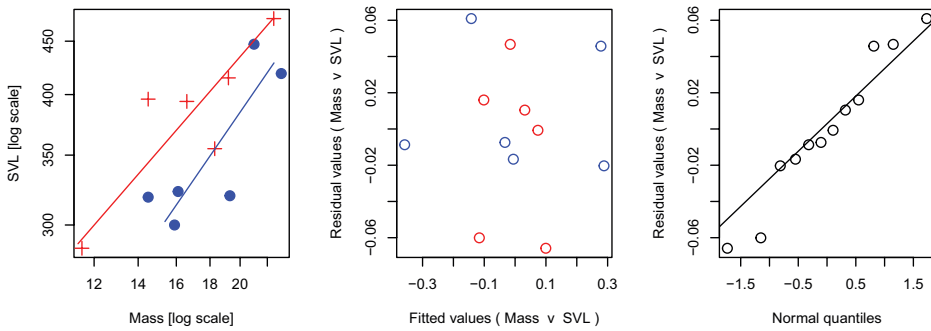


Figure 6. Standardised Major Axis testing routine: SVL/Mass. Female *U. panamensis* (red), male (blue).

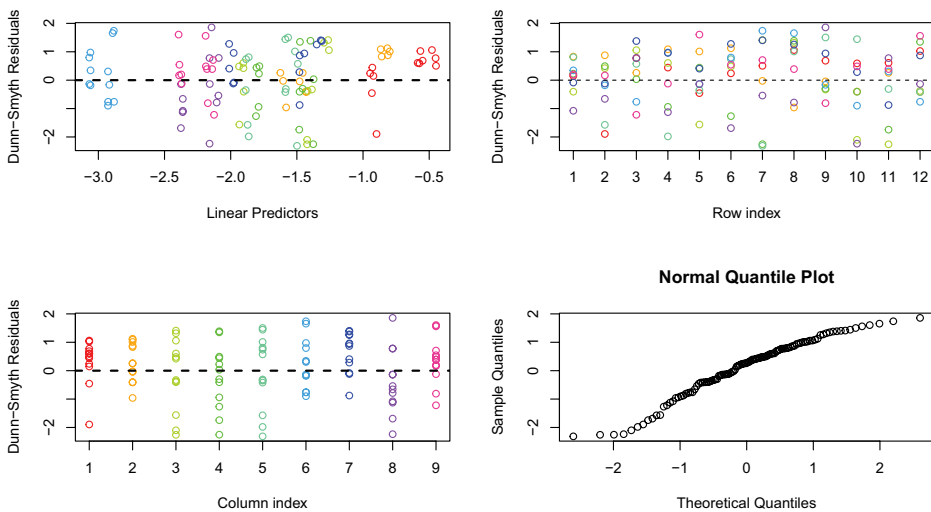


Figure 7. Dunn-Smyth residual fits of Bayesian ordination LVM (Option 2 – unconstrained ordination).

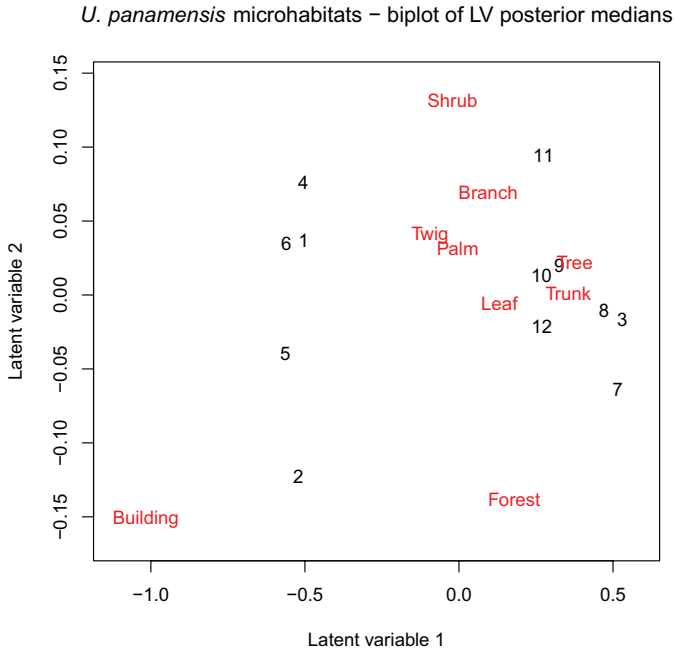


Figure 8. *U. panamensis* microhabitat ordination biplot of latent variable posterior medians (Option 2 model – unconstrained ordination). Microhabitats are stated, numbers are positions of latent variables for individual snakes.

U. panamensis microhabitats – residual correlations

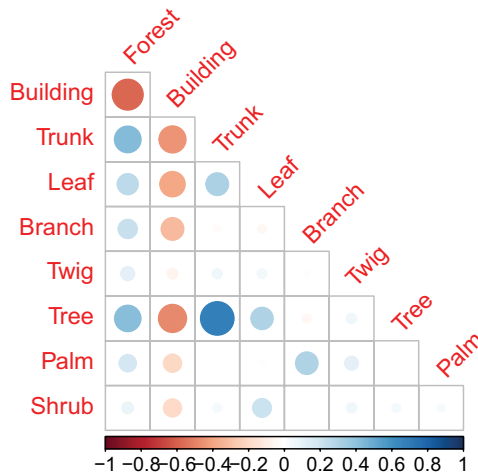


Figure 9. *U. panamensis* microhabitat residual correlations (from Option 2 model – unconstrained ordination). Only significant correlations are plotted (based on 95% credible intervals excluding zero). Correlations are represented by colours (red and blue for negative and positive correlations respectively), while the strength of correlations is represented by the size of the circles.

variables, and Branch, Twig and Palm variables to the right-hand side of the ordination amplifying their relations as a group away from Buildings. Forest and Shrub were categorically assigned in the model and, although not tightly associated with the clustered microhabitats, are spatially situated away from variable Building, thus adhering them to the right-hand side of the plot. This indicates their grouping with natural microhabitats.

The residual correlation plot showed most variables with a weak-minimal residual correlation (Fig. 9). Therefore, we accepted model correlation had not compromised the model and interpreted correlated signals as underlying relationships. Tree and Trunk were the strongest positively correlated variables. Building and Forest were strongly negatively correlated which also aligns with the contrast reflected in Fig. 8.

Sex, SVL, Mass, and TL were plotted against the latent variables for both models but exhibited no discernable relation to microhabitats with individuals distributed liberally between variables and associated to a spread of sex and size among the plots.

Discussion

This study provides a unique insight into the ecology of a little known and understudied snake and confirms general assumptions that have been reported in the literature (Corn 1974; Villa and Wilson 1990; Savage 2002). We have shown that like other boid species, *U. panamensis* exhibits sexual dimorphism, and that females are, in general, shorter than males. Our data confirm the hypothesis that *U. panamensis* has a significant preference for natural forest habitats, although it will use rurally located buildings in proximity to natural forest cover as refuges, or possible hunting grounds, a finding that is consistent with recent observations (Dwyer 2017; Solórzano and Carillo 2017). In the current study, given the forest habitat in the immediate area surrounding rural buildings where we encountered *U. panamensis*, it is likely these individuals may not have normally chosen to utilise anthropogenic structures.

The strong positive correlation between Tree and Trunk is an ecologically useful descriptor as this species is strongly associated with being found on tree trunks when detected in forested environments. The high correlation between Tree and Trunk variables identifies a hidden relationship between these two variables in the data that is not initially clear within the primary ordination plot. When buildings were present, they signalled a negative correlation with most natural microhabitat variables confirming that natural microhabitat components feature as the habitat components of choice by *U. panamensis*. These correlations between habitat variables in relation to the presence of *U. panamensis* are also observed for other arboreal boid species in the region such as *Corallus annulatus* (Lewis et al. 2011). Whilst such correlated habitat variables might not be unexpected, they have, prior to the work herein, not been adequately described for *U. panamensis*.

Eco-morphology and microhabitats are interesting concepts to describe a reptile's habitat preferences (Bickel and Losos 2002; Pyron and Burbrink 2009; Lewis et

al. 2013). These preferences could be used to guide conservation management when considering options for land management (Berriozabal-Islas et al. 2017; Todd et al. 2017). Our data was collected from only 13 individuals, over regular surveys during a ten-year period, which attests to the species' cryptic behavior, remarkable camouflage, and low detection rate. Prior to techniques such as latent variable modeling, deciphering interrelated associations between habitats for a species from small data sets often amounted to anecdotal information and univariate associations. This kind of information often rendered a species' preferred microhabitat structure inadequately addressed and at the mercy of descriptive natural history notation and surveyor opinion.

It is well documented that detection rates in snakes hamper efforts to better understand their ecology and conservation needs; in some cases decades are needed merely to understand the extent of the snake assemblage at a given location (Doan and Arizábal 2002; Duellman 2005). This difficulty in detection historically has led to a paucity in ecological data for many snake species, particularly in the tropics, due to the low numbers of encounters (MacKenzie et al. 2003; Bailey et al. 2004; Durso et al. 2011; Stroud and Thompson 2019). For example, *Corallus annulatus*, *Calliophis bibroni*, and *Trimeresurus medoensis* are three tropical snake species so infrequently detected that their detection is of conservation and distributional interest whenever they are discovered (Lewis et al. 2011; Griffin et al. 2012; Arockianathan et al. 2014). We believe this study shows that even with just a few individuals it is now possible to elucidate ecological information that is relevant to the conservation of snake species for which that information is currently lacking. Our analysis provides evidence that although the species can be found in rural environments such as buildings situated close to forested environments, it ultimately is a forest dwelling species that is detected well on tree trunks and among lower foliage on trees. With such low detection rates, we expect future research and observations of *U. panamensis* to further the knowledge of the ecology of the genus substantially. This novel approach to small datasets also provides the opportunity to better inform conservation and habitat management decisions in locations inhabited by rarely detected species.

Acknowledgements

We thank Ana Maria Monge, Elena Vargas, Javier Guevara and Carlos Calvi (MI-NAET) for supporting our work conducted in the Barra del Colorado refuge and Tortuguero National Park, Costa Rica (ACTo-GASP-PIN-023-2010, ACTo-GASP-PIN-08-2011). The Canadian Organization for Tropical Education and Rainforest Conservation (COTERC) kindly permitted study at Caño Palma Biological Station. Work in Panama was supported by permits issued to JMR (SE/A-27-05, SE/A-44-06, SE/A-78-07). We acknowledge the editorial staff at Neotropical Biology and Conservation for their encouragement of this work.

References

- Arockianathan S, Balasundaram R, Sivasubramani R, Shanker R, Shami SKP, Kathick S (2014) *Calliophis bibroni* (Bibroni Coral Snake): Rediscovery in Mudumalai Tiger Reserve, South India. *Herpetological Bulletin* 127: 35–36.
- Bailey LL, Simons TR, Pollock KH (2004) Estimating site occupancy and species detection probability parameters for terrestrial salamanders. *Ecological Applications* 14(3): 692–702. <https://doi.org/10.1890/03-5012>
- Berriozabal-Islas C, Badillo-Saldaña IM, Ramírez-Bautista A, Moreno CE (2017) Effects of habitat disturbance on lizard functional diversity in a tropical dry forest of the Pacific coast of Mexico. *Tropical Conservation Science* 10: 1–11. <https://doi.org/10.1177/1940082917704972>
- Bickel R, Losos JB (2002) Patterns of morphological variation and correlates of habitat use in chameleons. *Biological Journal of the Linnean Society* 76(1): 91–103. <https://doi.org/10.1111/j.1095-8312.2002.tb01717.x>
- Bogert CM (1968) The variations and affinities of the dwarf boas of the genus *Ungaliophis*. *American Museum Novitates* 2340: 1–26.
- Burger RM, Ford NB (2007) Courtship, mating, and alternative reproductive tactics in the middle American Dwarf Boa (*Ungaliophis continentalis*). In: Henderson RW, Powell R (Eds) *Biology of the Boas and Pythons*. Eagle Mountain Publishing, Eagle Mountain, 214–225.
- Corn MJ (1974) Report on the first certain collection of *Ungaliophis panamensis* from Costa Rica. *Caribbean Journal of Science* 14(3–4): 167–175.
- Doan TM, Arizábal AW (2002) Microgeographic variation of the herpetofaunal communities of Tambopata region, Peru. *Biotropica* 34: 101–117. <https://doi.org/10.1111/j.1744-7429.2002.tb00246.x>
- Duellman WE (2005) *Cusco Amazonico: The Lives of Amphibians and Reptiles in an Amazonian Rainforest*. Cornell University Press, New York.
- Dunn P, Smyth G (1996) Randomized quantile residuals. *Journal of Computational and Graphical Statistics* 5: 236–244. <https://doi.org/10.1080/10618600.1996.10474708>
- Durso AM, Seigel RA (2015) A Snake in the Hand is Worth 10,000 in the Bush. *Journal of Herpetology* 49(4): 503–506. <https://doi.org/10.1670/15-49-04.1>
- Durso AM, Wilson JD, Winne CT (2011) Needles in haystacks: Estimating detection probability and occupancy of rare and cryptic snakes. *Biological Conservation* 144(5): 1508–1515. <https://doi.org/10.1016/j.biocon.2011.01.020>
- Dwyer Q (2017) Nature notes: *Ungaliophis panamensis* Schmidt, 1933. Diet. *Mesoamerican Herpetology* 4: 939–940.
- Espinoza A, Barrio-Amorós C (2018) Nature notes: *Ungaliophis panamensis* Schmidt, 1933. Predation on *Gonatodes albogularis*. *Mesoamerican Herpetology* 5: 165–166.
- Gelman A, Carlin JB, Stern HS, Dunson DB, Vehtari A, Rubin DB (2013) *Bayesian data analysis*. Third Edition. Chapman and Hall/CRC, Boca Raton. <https://doi.org/10.1201/b16018>
- Geweke J (1992) Evaluating the accuracy of sampling-based approaches to calculating posterior moments. In: Bernardo JM, Berger JO, Dawid JO, Smith AFM (Eds) *Bayesian sta-*

- tistics 4: Proceedings of the 4th Valencia international meeting. Oxford University Press, Oxford. <https://doi.org/10.21034/sr.148>
- Griffin R, Martin G, Whitaker R, Lewis TR (2012) Distribution, morphology, and natural history of the Medo Pit Viper, *Viridovipera medoensis* (Viperidae, Crotalinae) in Arunachal Pradesh, Northeastern India. *IRCF Reptiles & Amphibians. Conservation and Natural History* 19: 236–241.
- Heyer WR, Donnelly MA, McDiarmid RW, Hayek LC, Foster MS (1994) Measuring and monitoring biological diversity: standard methods for amphibians. Smithsonian Institution Press, Washington.
- Holdridge LR (1967) Lifezone ecology. San José Tropical Science Centre, Costa Rica.
- Hui FKC (2016) Boral–Bayesian ordination and regression analysis of multivariate abundance data in R. *Methods in Ecology and Evolution* 7: 744–750. <https://doi.org/10.1111/2041-210X.12514>
- Hui FKC, Taskinen S, Pledger S, Foster SD, Warton DI (2015) Model-based approaches to unconstrained ordination. *Methods in Ecology and Evolution* 6: 399–411. <https://doi.org/10.1111/2041-210X.12236>
- Kiszka J, Macleod K, van Canneyt O, Walker D, Ridoux V (2007) Distribution, encounter rates, and habitat characteristics of toothed cetaceans in the Bay of Biscay and adjacent waters from platform-of-opportunity data. *ICES Journal of Marine Science* 64(5): 1033–1043. <https://doi.org/10.1093/icesjms/fsm067>
- Köhler G (2008) Reptiles of Central America. Herpeton-Verlag, Offenbach.
- Lewis TR, Grant PBC, Garcia-Quesada M, Ryall C, LaDuke TC (2010) A botanical study of Caño Palma Biological Station, Tortuguero, Costa Rica. *Brenesia* 74: 73–84.
- Lewis TR, Grant PBC, Henderson RW, Figueroa A, Dunn M (2011) Ecological notes on *Corallus annulatus* (Linnaeus) from a Costa Rican lowland tropical wet forest. *IRCF Reptiles & Amphibians. Conservation and Natural History* 18: 204–207. <https://doi.org/10.6084/m9.figshare.11370774.v1>
- Lewis TR, Griffin RK, Grant PBC, Figueroa A, Ray JM, Graham KE, David G (2013) Morphology and ecology of *Sibon* snakes (Squamata: Dipsadidae) from two forests in Central America. *Phyllomedusa* 12: 47–55. <https://doi.org/10.11606/issn.2316-9079.v12i1p47-55>
- Lovich RE, Hayes WK, Mushinsky H, Rodda GH (2012) Transect surveys, including line distance. In: McDiarmid RW, Foster MS, Guyer C, Gibbons JW, Chernoff N (Eds) *Reptile Biodiversity: Standard Methods for Inventory and Monitoring*. University California Press, Berkeley, 227–234.
- MacKenzie DI, Nichols JD, Hines JE, Knutson MG, Franklin AB (2003) Estimating site occupancy, colonization, and local extinction when a species is detected imperfectly. *Ecology* 84(8): 2200–2207. <https://doi.org/10.1890/02-3090>
- Myers RL (1990) Palm swamps. In: Lugo AE, Brinson M, Brown S (Eds) *Ecosystems of the World 15: Forested Wetlands*. Elsevier, Oxford, 267–278.
- Ocampo-Peñuela N, Garcia-Ulloa J, Kornecki I, Philipson CD, Ghazoul J (2020) Impacts of four decades of forest loss on vertebrate functional habitat on Borneo. *Frontiers in Forests and Global Change* 3: e53. <https://doi.org/10.3389/ffgc.2020.00053>

- Ovaskainen O, Abrego N, Halme P, Dunson D (2016) Using latent variable models to identify large networks of species-to-species associations at different spatial scales. *Methods in Ecology and Evolution* 7(5): 549–555. <https://doi.org/10.1111/2041-210X.12501>
- Plummer M (2003) JAGS: A program for analysis of Bayesian graphical models using Gibbs sampling. In: Proceedings of the 3rd international workshop on distributed statistical computing, March 20–22, Vienna.
- Pollock LJ, Tingley R, Morris WK, Golding N, O’Hara RB, Parris KM, Vesk PA, McCarthy MA (2014) Understanding co-occurrence by modelling species simultaneously with a Joint Species Distribution Model (JSDM). *Methods in Ecology and Evolution* 5(5): 397–406. <https://doi.org/10.1111/2041-210X.12180>
- Pyron RA, Burbrink FT (2009) Body size as a primary determinant of ecomorphological diversification and the evolution of mimicry in the lampropeltine snakes (Serpentes: Colubridae). *Journal of Evolutionary Biology* 22: 2057–2067. <https://doi.org/10.1111/j.1420-9101.2009.01820.x>
- R Core Team (2020) R: A language and environment for statistical computing. R Foundation for Statistical Computing, Vienna. <https://www.R-project.org/>
- Ray JM (2009) Ecology of neotropical arboreal snakes and behavior of new world mollusk-eating snakes. Doctor of Philosophy (PhD), Dissertation, Biological Sciences, Old Dominion University. <https://doi.org/10.25777/ysd1-2855>
- Ray JM (2015) Geographic distribution: *Ungaliophis panamensis* (Southern Bromeliad Boa). *Herpetological Review* 46: e64.
- Ray JM, Montgomery CE, Mahon HK, Savitzky AH, Lips KR (2012) Goo-eaters: Diets of the neotropical snakes *Dipsas* and *Sibon* in central Panama. *Copeia* 2(2): 197–202. <https://doi.org/10.1643/CH-10-100>
- Riva F, Nielsen SE (2020) Six key steps for functional landscape analyses of habitat change. *Landscape Ecology* 35(7): 1495–1504. <https://doi.org/10.1007/s10980-020-01048-y>
- Ross RA, Marzec G (1990) The reproductive husbandry of pythons and boas. Institute of Herpetological Research, Stanford.
- Savage JM (2002) The amphibians and reptiles of Costa Rica: A herpetofauna between two continents, between two seas. University of Chicago Press, Chicago.
- Shelton MB, Goldingay RL, Phillips SS (2018) Population ecology of a cryptic arboreal snake (*Hoplocephalus bitorquatus*). *Australian Journal of Zoology* 65(6): 383–390. <https://doi.org/10.1071/ZO18009>
- Solórzano A, Carillo E (2017) Nature notes: *Ungaliophis panamensis* Schmidt, 1933. *Diet. Mesoamerican Herpetology* 4: 940–941.
- Stroud JT, Thompson ME (2019) Looking to the past to understand the future of tropical conservation: The importance of collecting basic data. *Biotropica* 51(3): 293–299. <https://doi.org/10.1111/btp.12665>
- Taskinen S, Warton DI (2011) Robust estimation and inference for bivariate line-fitting in allometry. *Biometrical Journal. Biometrische Zeitschrift* 53(4): 652–672. <https://doi.org/10.1002/bimj.201000018>
- Todd BD, Nowakowski AJ, Rose JP, Price SJ (2017) Species traits explaining sensitivity of snakes to human land use estimated from community science data. *Biological Conservation* 206: 31–36. <https://doi.org/10.1016/j.biocon.2016.12.013>

- Villa JD, Wilson LD (1990) *Ungaliophis*. Catalogue of American Amphibians and Reptiles 480: 1–4.
- Warton DI (2017) Why you cannot transform your way out of trouble for small counts. *Biometrics* 74(1): 362–368. <https://doi.org/10.1111/biom.12728>
- Warton DI, Weber NC (2002) Common slope tests for errors-in-variables models. *Biometrical Journal. Biometrische Zeitschrift* 44(2): 161–174. [https://doi.org/10.1002/1521-4036\(200203\)44:2<161::AID-BIMJ161>3.0.CO;2-N](https://doi.org/10.1002/1521-4036(200203)44:2<161::AID-BIMJ161>3.0.CO;2-N)
- Warton DI, Duursma RA, Falster DS, Taskinen S (2012a) smatr 3 – an R package for estimation and inference about allometric lines. *Methods in Ecology and Evolution* 3: 257–259. <https://doi.org/10.1111/j.2041-210X.2011.00153.x>
- Warton DI, Wright ST, Wang Y (2012b) Distance-based multivariate analyses confound location and dispersion effects. *Methods in Ecology and Evolution* 3: 89–101. <https://doi.org/10.1111/j.2041-210X.2011.00127.x>
- Zipkin EF, DiRenzo GV, Ray JM, Rossman S, Lips KR (2020) Tropical snake diversity collapses after widespread amphibian loss. *Science* 367(6479): 814–816. <https://doi.org/10.1126/science.aay5733>

Supplementary material 1

MCMC trace and deviance plots from Coda for Bayesian LVM

Authors: Todd R. Lewis, Rowland K. Griffin, Irune Maguregui Martin, Alex Figueroa, Julie M. Ray, Josh Feltham, Paul B. C. Grant

Data type: MCMC Trace Plots

Explanation note: Convergence using MCMC trace plots retrieved from package Coda.

Copyright notice: This dataset is made available under the Open Database License (<http://opendatacommons.org/licenses/odbl/1.0/>). The Open Database License (ODbL) is a license agreement intended to allow users to freely share, modify, and use this Dataset while maintaining this same freedom for others, provided that the original source and author(s) are credited.

Link: <https://doi.org/10.3897/neotropical.16.e57872.suppl1>