



Published in final edited form as:

J Phys Chem B. 2009 October 8; 113(40): 13186–13194. doi:10.1021/jp9058966.

A coarse-grained model for polyethylene oxide and polyethylene glycol: conformation and hydrodynamics

Hwankyu Lee¹, Alex H. de Vries², Siewert-Jan Marrink², and Richard W. Pastor¹

¹ Laboratory of Computational Biology, National Heart, Lung, and Blood Institute, National Institutes of Health, Bethesda, MD 20892, USA ² Groningen Biomolecular Sciences and Biotechnology Institute and Zernike Institute for Advanced Materials, University of Groningen, Nijenborgh 4, 9747 AG Groningen, The Netherlands

Abstract

A coarse-grained (CG) model for polyethylene oxide (PEO) and polyethylene glycol (PEG) developed within the framework of the MARTINI CG force field (FF) using the distributions of bonds, angles, and dihedrals from the CHARMM all-atom FF is presented. Densities of neat low molecular weight PEO agree with experiment, and the radius of gyration $R_g = 19.1 \text{ \AA} \pm 0.7$ for 76-mers of PEO ($M_w \approx 3400$), in excellent agreement with neutron scattering results for an equal sized PEG. Simulations of 9, 18, 27, 36, 44, 67, 76, 90, 112, 135, and 158-mers of the CG PEO ($442 < M_w < 6998$) at low concentration in water show the experimentally observed transition from ideal chain to real chain behavior at $1600 < M_w < 2000$, in excellent agreement with the dependence of experimentally observed hydrodynamic radii of PEG. Hydrodynamic radii of PEO calculated from diffusion coefficients of the higher M_w PEO also agree well with experiment. R_g calculated from both all-atom and CG simulations of PEO76 at 21 and 148 mg/cm³ are found to be nearly equal. This lack of concentration dependence implies that apparent R_g from scattering experiments at high concentration should not be taken to be the chain dimension. Simulations of PEO grafted to a nonadsorbing surface yield a mushroom to brush transition that is well described by the Alexander-de Gennes formalism.

1. INTRODUCTION

Polyethylene oxide (PEO) and polyethylene glycol (PEG) are polymers with the formulas $\text{H}_3\text{C-O}-(\text{CH}_2-\text{CH}_2-\text{O})_n-\text{CH}_3$ and $\text{HO}-(\text{CH}_2-\text{CH}_2-\text{O})_n-\text{H}$, respectively. Due to their low toxicity and high solubility in water, they have been conjugated to an array of pharmaceuticals to overcome limitations of low solubility, short circulating life time, and immunogenicity.^{1,2} Initially, these pharmaceuticals mainly included peptide drugs^{3,4} and lipid liposomes,^{5–9} but recently PEGylation has been also applied to oligonucleotides,^{10–13} saccharides,¹⁴ biodegradable hydrogels,^{15,16} and dendrimers.^{17–20} A critical issue regarding these assemblies is the extent to which conformations of conjugated and unconjugated PEG or PEO are similar. Good correspondence implies that measurements of free polymers in solution provide insight to the complex (e.g., the height of the PEG layer above the surface of a PEGylated lipid bilayer). In contrast, strong lipid-PEG interactions will lead to deviations with predictions of theories based on nonadsorbing surfaces.^{21,22} Molecular dynamics (MD) simulation is a natural method to apply to this question. For example, simulations of PEO suggested how the solution hydrodynamic radius R_h is related to the pore radius of membrane proteins.²³ However, many

important PEG-containing assemblies are too large for all-atom MD simulation. To overcome this limitation, coarse-grained (CG) treatments are required.

CG models for PEO have been developed for implicit solvent, and yield good agreement with experiment for chain dimensions,^{24–26} and aggregation number and critical micelle concentration.²⁶ Although not computationally demanding, the transferability of implicit solvent models to multicomponent mixtures is limited. Models with explicit solvent are more directly applicable to the interaction of PEG with macromolecular assemblies of lipids and proteins. For example, the CG PEO model with explicit solvent developed by Klein and coworkers showed self-assembly of diblock copolymers in explicit water, and strong interaction with a lipid bilayer.^{27,28} This paper presents a PEO/PEG model suitable for simulations in the MARTINI CG force field (FF) due to Marrink et al.^{29,30} The MARTINI CG FF, originally designed for lipids,³⁰ has been extended to proteins³¹ and successfully applied to large assemblies including proteins, nanoparticles, and membranes.^{32–37}

Particles in the MARTINI FF typically consist of 3 or 4 heavy atoms. For PEG/PEO chains, an intuitive building block defines the sequence C-O-C as a CG bead. Then, as illustrated in Figure 1 for $n=2$, an n -mer of PEO (denoted PEO n) contains $n+1$ beads, while an n -mer of PEG has n beads. In this study, CG molecules are consistently named PEO n instead of PEG $n+1$, though can model for either. The parameterization of the bonded interactions between CG beads is primarily based on all-atom simulations of 9, 18, 27, and 36-mers of PEO ($442 < \text{molecular weight } M_w < 1,630$) in water.²³ These all-atom simulations, carried out with the CHARMM ether force field (C35r), show excellent agreement with experiment, as demonstrated for the persistence length $\lambda = 3.7 \text{ \AA}$ (experimental values are 3.7 \AA for PEO³⁸ and 3.8 \AA for PEG³⁹), the radius of gyration $R_g \propto M_w^{0.52 \pm 0.02}$ (ideal chain behavior, as observed⁴⁰), and the shape anisotropy of 2.59:1.44:1.00 (in reasonable agreement with the axial ratio of 2.2 obtained experimentally for DNA⁴¹). Following the strategy used in the development of the MARTINI model for proteins,³⁵ the configurations from the all-atom simulations were mapped to CG pseudo-atoms, and the CG potentials were adjusted to match the bond, angle, and dihedral angle distributions of the pseudo-atoms. Nonbonded interactions between CG beads were parameterized using experimental densities of low molecular weight PEO as targets. End-to-end distributions of the all-atom and CG simulations were compared, but not used explicitly for the parameterization.

The CG model was tested by comparison to the experimentally determined R_g of PEG77 ($M_w \approx 3400$), hydrodynamic radii for a range of M_w , and by the transition point of ideal to real chain behavior as measured by R_g . Specifically, theoretical considerations indicate that the coefficient ν in the relation $R_g \propto M_w^\nu$ equals 0.5 (ideal chain, no excluded volume) at low molecular weight, and 0.588 (real chain) at high M_w for polymers in good solvents such as water.⁴² Light scattering of high molecular weight PEO yields $\nu = 0.583 \pm 0.031$ in $R_g \propto M_w^\nu$.^{43,44} An experimental value of ν at low-to-medium M_w can be estimated from hydrodynamic radii R_h obtained from measurements of viscosities and diffusion constants of PEG by Kuga.⁴⁰ Fitting this data to the relation $R_h \propto M_w^\nu$ yields $\nu = 0.505 \pm 0.004$ for $M_w < 2000$ (45 monomers) and 0.571 ± 0.001 for $2000 < M_w < 7500$. Assuming that $R_h \propto R_g$,⁴⁵ a cross-over from ideal to real chain behavior at $M_w \approx 2000$ is a valuable test for the model.

This paper is organized as follows. Sections 2.1 and 2.2 describe the simulation conditions for the coarse-grained and all-atom simulations, respectively, and Section 2.3 outlines the steps required to evaluate R_h . The Results and Discussion contains five subsections. Section 3.1 details the parameterization of CG PEO/PEG, and the comparison with all-atom simulations of low molecular weight PEO. Sections 3.2 and 3.3 compare the molecular weight dependence of R_g and R_h respectively from CG simulations of PEO9 to PEO158 at low concentration.

Section 3.4 considers the concentration dependence of R_g for PEO76 based on both all-atom and CG simulations. Experimental measurements⁴⁶ indicate a large drop in the *apparent* R_g as the concentration of PEG77 increases from 30 mg/cm³ to 160 mg/cm³. The contributions from interchain scattering to this drop are not known; i.e., the actual R_g of PEG77 may be equal at the preceding concentrations. Hence, the simulations provide another comparison of the CG and all-atom FF, and provide a direct estimate of R_g for the individual chains at high concentration. As an application of the model, Section 3.5 presents the results of simulations of nonadsorbing membrane-like surfaces with different densities of grafted PEO44, and analysis using the Alexander-de Gennes model^{21,22} of the mushroom to brush transition. This is a preliminary exploration of PEGylated lipid bilayers, with a focus on determining a consistent measure of the height above the surface (the thickness of the brush) for the two regimes. Section 4 presents the conclusions.

2. METHODS

2.1. Coarse-Grained Simulations

Simulations and analyses were performed using the GROMACS simulation package⁴⁷ with the MARTINI CG force field developed by Marrink et al.^{29,30} (downloaded from <http://md.chem.rug.nl/~marrink/coarsegrain.html>). A cutoff of 12 Å was set for Lennard-Jones (LJ) and electrostatic interactions. The LJ potential was smoothly shifted to zero between 9 and 12 Å, and the Coulomb potential was smoothly shifted to zero between 0 and 12 Å. The pressure was maintained at 1 bar and temperature at 296 K (solutions, and PEO grafted to nonadsorbing surface) or 293 K (neat liquids) by the weak-coupling algorithm.⁴⁸ A time step of 10 fs was used for neat PEO and for the low concentration solutions; an 8 fs time step was employed for the high concentration solutions. Coordinates were saved every 20 ps for analysis. As a final general comment, freezing of pure MARTINI water has been reported at temperatures close to that of the present simulation.²⁹ Freezing has been avoided by applying a 21 % radius increase to 10 % of the water particles.²⁹ No freezing was observed in any of the PEO/water or PEO/lipid/water simulations carried out for this study, though all waters were identical; i.e., the presence of PEO appears to prevent nucleation. The following subsections provide further details for each system.

2.1.a. Neat PEO1 to PEO5—Neat PEO1, PEO2, PEO3, PEO4, and PEO5 were simulated to calculate densities. 300 PEO molecules were randomly positioned in an initial periodic box of size 51 Å/side, and simulations were performed for 100 ns, with averages calculated over the last 50 ns.

2.1.b. PEO9 to PEO158 in solution—Single chains of PEO were simulated in water for the following lengths and times: PEO9, PEO18, PEO27, PEO36 (400 ns); PEO44, PEO67 (600 ns); PEO76, PEO90, PEO112, PEO135, PEO158 (800 ns). Four trajectories for each molecular size were generated. To avoid interactions between PEO molecules through the periodic boundary conditions, simulation systems with PEO9-PEO36 included ~9,200 water beads (equivalent to ~36,800 real waters) in box sizes of 100 Å/side; and systems with PEO44-PEO158 included ~16,400 water beads (~65,600 real waters) in 125 Å/side boxes. Analyses were performed with the first 20 ns deleted for PEO9 to PEO36, and the first 100 ns deleted for PEO44 to PEO158.

2.1.c. Concentration dependence of PEO76—8 copies of PEO76 were randomly positioned in a box of 130 Å/side (18,544 water beads), leading to a concentration of 21 mg/cm³. Similarly, 72 copies of PEO76 in a 140 Å/side box (19,928 water beads) yielded 148 mg/cm³. These are close to ~30 mg/cm³ and ~160 mg/cm³, the concentrations for experimentally

measured R_g .⁴⁶ The simulations were performed for 800 ns, and the last 700 ns were averaged for analysis.

2.1.d. PEO44 grafted to a nonadsorbing surface—A model nonadsorbing bilayer was constructed as a mixture of modified DSPC (distearoylphosphatidylcholine) and DSPE-PEO44 (PEO44 attached to the ethanolamine bead in the head group of distearoylphosphatidylethanolamine). Glycerol and head group beads of DSPC and lipid parts of DSPE-PEO44 were changed into hydrophobic C1-type beads which are usually designed for the lipid tail group in the MARTINI FF. The lipid-PEO interaction was also modified to prevent adsorption (LJ: $\epsilon = 2.0$, $\sigma = 6.2$) without any change of the interactions of PEO-water and PEO-PEO.

Seven systems at grafting densities ranging from 1 to 100% were equilibrated at constant pressure and temperature (NPT), and then simulated at fixed surface area and constant normal pressure (NP_zAT). Numbers of DSPE-PEO44 and *total* lipids are as follows: 2, 200; 72, 1820; 98, 1568; 200, 1800; 450, 1800; 900, 1800; 1800, 1800. Each system contained approximately 40 CG waters/lipid, and the surface area ranged from 66 (lowest grafting density) to 80 (highest) $\text{\AA}^2/\text{lipid}$. Simulations were performed for 800 ns for the highest grafting density, and 300 for the others; the last 100 ns were used for analysis.

2.2. Atomistic Simulations

All-atom simulations and analyses were performed using CHARMM c33b2.⁴⁹ The CHARMM C35r ether force field was used for PEO parameters,^{23,50} and TIP3P model was used for water.^{51,52} Using the velocity Verlet integrator⁵³ with a time step of 2 fs, the temperature of 296 K was maintained by the Nose-Hoover thermostat,^{54,55} and the pressure was maintained at 1 atm by the Andersen-Hoover barostat.⁵⁶ Electrostatic interactions were calculated using particle mesh Ewald⁵⁷ and a real space cutoff of 12 \AA ; van der Waals interactions were switched to zero between 8 \AA and 12 \AA , and an isotropic long-range correction was applied.⁵⁸ Coordinates were saved every picosecond for analysis.

2.2.a. PEO76 in solution—A single PEO76 was solvated in a box of 74 $\text{\AA}/\text{side}$ ($\sim 13,600$ water molecules). Two solvated systems were generated with different configurations of PEO76 having initial R_g of 9 and 24 \AA , respectively. Simulations were performed for 70 ns, and the last 50 ns were used for analysis.

2.2.b. Concentration dependence of PEO76—5 copies of PEO76 were positioned in a box of 100 $\text{\AA}/\text{side}$ ($\sim 35,200$ water molecules) for a concentration of 26 mg/cm^3 ; 27 copies of PEO76 were positioned in 100 $\text{\AA}/\text{side}$ ($\sim 30,700$ water molecules, 146 mg/cm^3). These PEO76 concentrations are close to those used in the CG simulation and experiment.⁴⁶ Initial conditions were generated with the R_g of each PEO ≈ 9 , 14 and 27 \AA . The experimental R_g for PEG77 at low concentration is 19.7 \AA , so the preceding initial conditions span the range from compact to relatively extended. The six simulations (two concentrations, three initial conditions) are denoted “L9”, “L14”, “L27”, “H9”, “H14”, and “H27”, where the number is the initial R_g , and the letter specifies low or high concentration. Trajectories were generated for 24 and 21 ns for L9-L27 and H9-H27, with the first 10 and 15 deleted for analysis, respectively.

2.3. Calculation of the hydrodynamics radius

The effective hydrodynamic radius R_h is a construct obtained from the Stokes-Einstein relationship⁴²

$$D = \frac{k_B T}{f} \quad (1)$$

where D is the translational diffusion constant, T is the absolute temperature, k_B is Boltzmann's constant, and f is the translational friction constant. Stokes' law for a sphere of radius a with stick boundary conditions in a medium of viscosity η is $f = 6\pi\eta a$.⁵⁹ Equating the hydrodynamic radius R_h to the Stokes' radius a , R_h is then obtained from the diffusion constant as

$$R_h = \frac{k_B T}{6\pi\eta D} \quad (2)$$

R_h is a useful quantity for comparing models because the simulated diffusion constant D_{sim} is inversely proportional to the viscosity of the medium. For example, the all-atom low molecular weight PEO discussed here were simulated in TIP3P water,⁵¹ where $\eta \approx 0.32$ cP at room temperature.⁶⁰ This viscosity differs substantially from experiment, and the viscosity of MARTINI CG water. Consequently, D from different simulations and from experiment will likely be very different, whereas R_h , which is both a measure of conformation and interaction with solvent, may be similar.

Calculation of D_{sim} for each polymer was a multistep process, beginning with D_{PBC} , the diffusion constant obtained in a simulation with periodic boundary conditions. The four individual trajectories for each polymer size were divided in half yielding eight independent segments. The mean square displacement (MSD) of the centers of mass versus time was evaluated for each segment, and a standard deviation was determined for each point of the average MSD. Linear regression⁶¹ was then carried out on the averaged MSD with (inverse) weighting equal to the standard deviations over the following ranges: 10 to 100 ns for PEO9,18,27,36; 10 to 150 ns for PEO44,67; 10 to 250 ns for PEO76,158. The slopes were divided by 6, leading to D_{PBC} . Slopes obtained from the 8 individual MSD yielded an estimate of the standard error for D_{PBC} .

D_{PBC} was then corrected for finite size effects using the formula derived by Yeh and Hummer:⁶²

$$D = D_{PBC} + \frac{k_B T \xi}{6\pi\eta L} \quad (3)$$

where L is the cubic box length, $\xi = 2.837297$, and η is the viscosity of the medium. The viscosity increases with higher polymer concentration, and hence the solution viscosity was corrected using the Einstein formula⁴⁵

$$\eta = \eta_w (1 + 2.5\varphi) \quad (4)$$

where φ is the volume fraction of the particles, and η_w is the viscosity of pure water (taken to be 0.75 cP from the value obtained from simulations of the present model at 298 K).⁶³ This correction is small, given that φ ranged from 0.00186 to 0.00346. The final diffusion constant is given by

$$D_{sim} = \left[D_{pbc} + \frac{k_B T \xi}{6\pi \times 0.0075(1+2.5\varphi)L} \right] \quad (5)$$

This formula differs from Eq. (6) of ref. ²³, where D_{sim} was further scaled to the experimental viscosity.

3. RESULTS AND DISCUSSION

3.1. Parameterization of the coarse-grained model

The energy function was designed to be consistent with the MARTINI force field (FF).²⁹ In general, the MARTINI potential consists of bond, angle, Lennard-Jones (LJ), electrostatic, and torsional terms. The following functions were parameterized:

$$V_{bond}(b) = \frac{1}{2} K_b (b - b_0)^2 \quad (6)$$

where K_b is the bond force constant, b is the instantaneous bond length, and b_0 is the bond length at the minimum energy;

$$V_{angle}(\theta) = \frac{1}{2} K_\theta (\cos(\theta) - \cos(\theta_0))^2 \quad (7)$$

(parameters are defined as for bonds);

$$V_{dihedral}(\varphi) = \sum_{i=1}^m K_{\varphi,i} (1 + \cos(n_i \varphi - \varphi_i)) \quad (8)$$

where n_i and φ_i are the multiplicities and offsets, respectively, of the m individual dihedral terms ($m=4$ for the present parameterization);

$$V_{LJ}(r_{ij}) = 4\varepsilon_{ij} \left[\left(\frac{\sigma_{ij}}{r_{ij}} \right)^{12} - \left(\frac{\sigma_{ij}}{r_{ij}} \right)^6 \right] \quad (9)$$

where σ_{ij} is the zero point of the potential and ε_{ij} is the well depth at the minimum; $\varepsilon_{ij} = 0$ for particles bonded to each other.

Parameters for the CG potential energy function (Table 1) were obtained by matching bond, angle, and dihedral distributions, from all-atom simulations²³ of PEO9, PEO18, PEO27, and PEO36, and experimental densities of very low molecular weight neat PEO. End-to-end distributions and R_g were used to evaluate the parameters. The following paragraphs describe the critical considerations for refining each of the terms.

In the MARTINI FF, values of σ_{ij} (in Å) are set to 4.7 for particle types representing approximately 4 heavy atoms, and 4.3 for smaller particles representing 2–3 atoms including those in rings. For particles with $\sigma_{ij} = 4.7$ Å, ε_{ij} (in kJ/mol) takes values that represent different strengths of interaction. From most attractive to least attractive, the values are: 5.6 (bead types:

P5, Qda), 5.0 (P4, P3, Qd, Qa), 4.5 (P2, P1, Nda), 4.0 (Nd, Na), 3.5 (Q0, N0, C5, C4, C3, C2, C1), 3.1, 2.7, 2.3, and 2.0. For interaction between particles with $\sigma_{ij} = 4.3$, the ϵ_{ij} are scaled to 75% of those for $\sigma_{ij} = 4.7$, and the bead types are renamed by adding the prefix “S” (e.g., SNda from Nda); ϵ_{ij} are not scaled when $\sigma_{ij} = 4.3$ and $\sigma_{ij} = 4.7$ particles interact, and σ_{ij} is reset to 4.7. Since a monomer of PEO includes 3 heavy atoms (COC), $\sigma_{ij} = 4.3$ and $\epsilon_{ij} = 3$ were initially chosen; these are typical parameters for a neutral bead with H-bonding acceptor properties in the MARTINI FF. However, after matching bond, angle, and dihedral distributions to the all-atom results, the R_g and the root mean square end-to-end distances, $\langle h^2 \rangle^{1/2}$, from the CG simulations were too high. This implied that either the PEO-PEO interaction was too weak, or the PEO-water interaction was too strong. Other bead types for PEO were tested, and $\sigma_{ij} = 4.3$ and $\epsilon_{ij} = 3.375$ yielded the best results. Thus, the PEO bead is more attractive to itself than expected on the basis of the small molecule parameterization of the standard MARTINI FF. In effect, as far as the PEO-PEO interaction and the interaction with water are concerned, the PEO bead is treated as a SNda type. We anticipate that for interactions with water and other beads the SNa type will be more appropriate.

Parameters for the bond, angle and dihedral potentials were obtained by comparing distributions from our previous all-atom simulations of PEO36,²³ after mapping them to the CG representation. Following the conventions for development of the MARTINI FF, distributions were evaluated from the centers of mass for each monomer (C-O-C) in the all-atom model, leading to unimodal distributions for bonds and angles, and a bimodal one for dihedrals (Figure 2, dashed lines). The solid lines in Figure 2, obtained from simulations of PEO36 based on the CG parameters listed in Table 1, agree very well with the all-atom set, demonstrating the success of the parameterization of the bond and angle terms. The standard MARTINI approach does not include proper torsional terms. CG dihedral distributions for alkanes and alkenes can be matched to atomistic distributions sufficiently well using bond and angle potentials in combination with the nonbonded terms that are excluded only between nearest neighbors. For peptides and proteins, elastic bonds have been used to match the specific dihedral distributions for secondary structure elements (extended versus helical arrangements). The preceding strategies failed here, and explicit proper torsional terms were required. Figure 2 shows the very good correspondence of CG and the mapped atomistic dihedral distributions. A similar result for a different CG model of PEO was reported by Fischer et al.²⁵

Nonbonded parameters were optimized on the basis of comparison of densities of low molecular weight PEO to experimental values as well as comparison of the radius of gyration and end-to-end distance distributions of single PEO chains in water to mapped atomistic simulation results. Table 2 compares simulated and experimental densities of low molecular weight PEO. Differences of <5% in PEO3 to PEO5 are comparable to those obtained in the parameterization of CG alkanes.³⁰

Table 3 lists R_g and $\langle h^2 \rangle^{1/2}$ for the single molecule simulations of CG PEO9 to PEO158, all-atom PEO76, and all-atom of PEO9 to PEO36 from reference²³. Figure 3 compares the end-to-end distance distributions $Prob(h)$ at lower molecular weights. Overall agreement of CG and all-atom results is excellent, including PEO76 which was not part of the parameter optimization. R_g for PEO76 equals 19.1 ± 0.7 and 20.4 ± 0.8 Å for the CG and all-atom systems respectively, in excellent agreement with the value of 19.7 Å obtained from neutron scattering of PEG77 at low concentration⁴⁶ (recall from Figure 1 that PEO n contains the same number of CG beads as PEG $n+1$). The close agreement of distributions from all-atom PEO27, all-atom PEG28, and CG PEO27/PEG28 (third panel of Figure 3) demonstrates that the CG model can be applied to both PEG and PEO. Figure 3 also includes the analytic result for the worm-like chain model,⁶⁴

$$Prob(h) = \frac{4\pi h^2 C_1}{L(1 - (h/L)^2)^{9/2}} \exp\left(\frac{-3L}{4\lambda(1 - (h/L)^2)}\right) \quad (10)$$

where L is the length of the fully extended (all-atom) polymer.

$C_1 = (\pi^{3/2} e^{-\alpha} \alpha^{-3/2} (1 + 3\alpha^{-1} + \frac{15}{4}\alpha^{-2}))^{-1}$, λ is the persistence length, and $\alpha = 3L/4\lambda$. Agreement of the simulated and analytic distributions is very good for the 4 lengths shown for $\lambda = 3.7 \text{ \AA}$ (the value of the all-atom simulations and experiment).

A minor peak at approximately 5 \AA (close to σ_{ij}) is evident for PEO9 (Fig. 3). This implies that a small subset of the lower molecular weight PEO forms ring-like conformations not observed in the MD simulations or in the worm-like chain model. The peak gradually diminishes by PEO36. Further refinement of the CG model to include a separate bead type for the terminal groups could likely eliminate this conformation. However, given that this artifact is restricted to the low M_w , no changes were made in order to avoid complicating the model.

3.2. Molecular weight dependence of radius of gyration

Figure 4 plots the instantaneous R_g and h of PEO158 over the 800 ns trajectory, and demonstrates the good convergence and stability of the system. When comparisons were possible, the autocorrelation functions of R_g for CG models relaxed more than twice as slowly as those from the all atom models. A close correspondence would not necessarily be expected because the potentials are not the same; however, as established in Section 2.3, the viscosity of CG water is almost 3 times that of TIP3P. Hence, the difference in solvents explains much of the difference in relaxation times.

The present range of PEO allows an examination of the transition from ideal to real chain behavior; i.e., a determination of where the coefficient ν in $R_g \propto M_w^\nu$ shifts from $\nu = 0.5$ to the experimental value of 0.583. Figure 5 plots $\log R_g$ vs. $\log M_w$. Least squares fits over $442 < M_w < 1630$ and $1630 < M_w < 6998$ yield $\nu = 0.51 \pm 0.02$ and 0.57 ± 0.02 , respectively. Similarly, those over $442 < M_w < 1982$ and $1982 < M_w < 6998$ yield $\nu = 0.52 \pm 0.01$ and 0.57 ± 0.02 . Higher break points result in higher ν for the ideal chain regime. Hence, the break in slope ($M_w \approx 1600\text{--}2000$) occurs near the experimental value $M_w = 2000$. Neither the value of R_g for PEO76 nor the transition point of ν was explicitly parameterized, and the excellent agreement with experiment thereby provides strong support for the model.

3.3. Molecular weight dependence of hydrodynamic radius

Columns 2 and 3 of Table 4 list D_{PBC} and D_{sim} for the single particle CG simulations, and those of 8 PEO76 at 21 mg/cm^3 (see Section 2.1.c and 3.4). The corrections for periodic boundary conditions are substantial, up to approximately half D_{sim} . The remaining columns compare R_h for the CG and all-atom models, and experiment. Results from R_h from larger PEO (PEO67, PEO76, and PEO158) agree very well with experiment (average error of 6%). While the trend is captured for PEO9 to PEO44, the simulated values systematically underestimate the experimental values by approximately 20%. Such a limitation might well be expected. Details of the surface become less important in hydrodynamics as size increases. However, the preceding results indicate that caution is required when attempting to model hydrodynamic results for $N < 67$ for the present model.

3.4. Concentration dependence of PEO76

At low polymer concentration, excluded-volume effects are predominantly intramolecular, and cause the coil to swell. As concentration increases, intermolecular excluded-volume interactions reduce the size of each coil.^{46,65} The cross-over point for PEO, however, is not well established. Small angle neutron scattering (SANS) measurements⁴⁶ on PEG77 indicate a decrease in the *apparent* R_g from 19.7 Å at 30 mg/cm³ to 8 Å at 160 mg/cm³. The scattering intensity from SANS spectra is only directly related R_g at very low concentration,^{46,66} so the extent of decrease of R_g , if any, is not clear. Recent all-atom simulations of PEO3 to 30 showed no concentration dependence of R_g ,²⁵ although larger PEO were not simulated. To directly compare with experimental values, both all-atom and CG simulations of multiple copies of PEO76 were carried out at low (21–26 mg/cm³) and high concentrations (146–148 mg/cm³).

Figure 6 shows the average R_g of the sets of PEO76 for the all-atom simulations at low and high concentrations (see Section 2.2.b for nomenclature). The average R_g of L9, L14, and L27 are reasonably equilibrated by 10 ns. Similarly, H9, H14, and H27 are equilibrated at 15 ns. The far less costly CG simulations were carried out for 800 ns at both concentrations and the first 100 ns were not included in the final averages. Table 5 lists the results. There is no compelling evidence for a reduction of R_g at the higher concentration; i.e., the apparent R_g obtained from scattering experiments at 160 mg/cm³ likely arise from interchain scattering.

3.5. Conformation of PEO grafted on the surface

To increase solubility and circulating time of drug molecules, PEG has been attached to the drug transporters such as vesicles, micelles, and nanoparticles,² which has motivated theoretical and experimental studies of the behavior of PEG grafted on various surfaces.^{67–71} The theoretical treatment by Alexander²¹ and de Gennes²² defines two regimes for a polymer grafted on a nonadsorbing surface. At very low grafting density, the chain behaves much like an isolated chain in solution (with the obvious proviso that half of the conformational space is excluded by the surface). Consequently it traces out a hemisphere (or “mushroom”) with a size given by the Flory radius

$$R_F \equiv aN^{3/5} \quad (11)$$

where N is the degree of polymerization and a is the monomer size; for this study, a is set equal to the bond length $b_0 = 3.3$ Å. R_F is proportional to, though not necessarily exactly equal to, $\langle h^2 \rangle^{1/2}$ of the polymer in solution. At high grafting densities, the polymer enters the “brush” regime, with the thickness of the brush L given by

$$L = Na(a/D)^{2/3} \quad (12)$$

where D is the distance between the grafting points of polymers in the lateral plane. The mushroom and brush states are sketched on the top row of Figure 7. This subsection applies Alexander-de Gennes theory to the results of simulations of PEO44 ($N=45$) grafted to a bilayer modified to model a hydrophobic nonadsorbing surface. Of particular interest is a consistent specification of L that can be applied to simulations of PEG on more complicated surfaces.

As described in Section 2.1.d, lipid bilayers consisting a mixtures of modified DSPC and DSPE-PEO44 were simulated; Table 6 lists the mole fractions of DSPE-PEO44 and D -values for the 7 systems. The middle and bottom rows of Figure 7 show the side and top-down views, respectively, of the final conformations of the grafted PEO44. It is clear that the polymer is in

mushroom and brush-like states at $D=44$ and 12 \AA , respectively. Figure 8 plots the densities of PEO44 normal to the surface for $D=9$ to 81 \AA . The distributions are reasonably similar at high D , and become more extended as D decreases and the chains overlap.

Table 6 lists $\langle h^2 \rangle^{1/2}$ for each value of D . For $D=35\text{--}81 \text{ \AA}$, $\langle h^2 \rangle^{1/2} = 28\text{--}33 \text{ \AA}$; i.e., nearly equal to $R_F = 32 \text{ \AA}$. For $D=9\text{--}27 \text{ \AA}$, $\langle h^2 \rangle^{1/2} = 34\text{--}43 \text{ \AA}$, indicating a departure from the mushroom regime. Alexander-de Gennes theory only defines the brush thickness precisely in the limit $a=D$ from Eq (12); the intermediate values are left unspecified. Here the density profiles were used to define brush thickness. For the mushroom regime, it is reasonable to equate $\langle h^2 \rangle^{1/2}$ to an effective L for a nonadsorbing surface. From the density profiles in this range of D (Figure 8), distances of $28\text{--}33 \text{ \AA}$ correspond to 97–99% of densities. If this same 97–99% density criterion is applied to the polymer at $D = 17 \text{ \AA}$, L ranges from 45 to 53 \AA . These values bracket $L = 50 \text{ \AA}$ obtained for a brush (Eq. 12), and differ substantially from $R_F = 32 \text{ \AA}$. Figure 9 shows the results for all D analyzed in this manner, and compares them with results from Eqns. (11) and (12). There is good agreement between simulation and theory except at the very highest grafting density; this may arise from chain packing interactions in the simulation. The transition from mushroom to brush occurs between $D = 27$ and 35 \AA ; i.e., about the value of R_F for $N=45$. An examination of the relation of R_F and $\langle h^2 \rangle^{1/2}$ for other values of N , and for adsorbing surfaces will be considered elsewhere.

4. CONCLUSIONS

A coarse-grained (CG) model for polyethylene oxide (PEO) and polyethylene glycol (PEG) was developed within the framework of the MARTINI CG force field. Densities of neat PEO1 to PEO5, and distributions of bond, angle, dihedral, and end-to-end distances of PEO9 to PEO36 in water are in excellent agreement with those from experiments and all-atom simulations. Simulations of PEO9 to PEO158 ($442 < M_w < 6998$) in explicit water then yielded $1600 < M_w < 2000$ for the turnover from ideal to real chains in the relation $R_g \propto M_w^\nu$, and $R_g = 19.1 \text{ \AA}$ for PEO76. Both are in excellent agreement with the experimental targets $M_w = 2000$ and $R_g = 19.7 \text{ \AA}$, respectively.

The hydrodynamic radii R_h for the longer chains ($> \text{PEO67}$) are in very good agreement with those from experiment; the lower M_w underestimate experiment by 20% (on average). This observation, along with the small peak at 5 \AA in the end-to-end distributions for PEO9 to PEO27, indicates that the model becomes more accurate as molecular weight increases.

Average R_g calculated from CG simulations of multiple copies of PEO76 are $18.9 \pm 1.1 \text{ \AA}$ at low concentration (21 mg/cm^3) and $18.6 \pm 0.1 \text{ \AA}$ at high concentration (148 mg/cm^3), respectively, close to those calculated from all-atom simulations. These values agree well with the experimental value of 19.7 \AA at 30 mg/cm^3 , but not 8 \AA at 160 mg/cm^3 . Thus, simulations show no concentration dependence of PEO76.

The effective lengths (set to 97–99% of the density above the surface) of PEO44 grafted on hydrophobic (nonadsorbing) surface are described well by Alexander-de Gennes theory. The transition between mushroom and brush occurs at $D = 27\text{--}35 \text{ \AA}$, where D becomes close to the Flory radius $R_F=32 \text{ \AA}$ for this length polymer. The agreement of theory and simulation, after an effective brush thickness is defined, provides the basis for analysis of more complex systems including PEGylated bilayers. However, the PEO-lipid interaction parameters must be developed before the present model can be applied to such systems in the MARTINI FF.

Acknowledgments

We thank Richard Venable, Edward O'Brien, Monica Pate, and P. Thiyagarajan for helpful discussions. This research was supported by the Intramural Research Program of the NIH, National Heart, Lung and Blood Institute. This study

utilized the high-performance computational capabilities of the CIT Biowulf/LoBoS3 and NHLBI LOBOS clusters at the National Institutes of Health, Bethesda, MD.

References

1. Harris JM, Martin NE, Modi M. *Clin Pharmacokinet* 2001;40:539. [PubMed: 11510630]
2. Harris JM, Chess RB. *Nat Rev Drug Discov* 2003;2:214. [PubMed: 12612647]
3. Imura Y, Nishida M, Matsuzaki K. *Biochim Biophys Acta-Biomembr* 2007;1768:2578.
4. Imura Y, Nishida M, Ogawa Y, Takakura Y, Matsuzaki K. *Biochim Biophys Acta-Biomembr* 2007;1768:1160.
5. Allen TM, Hansen C. *Biochimica Et Biophysica Acta* 1991;1068:133. [PubMed: 1911826]
6. Allen TM, Hansen C, Martin F, Redemann C, Yaouyoung A. *Biochimica Et Biophysica Acta* 1991;1066:29. [PubMed: 2065067]
7. Papahadjopoulos D, Allen TM, Gabizon A, Mayhew E, Matthay K, Huang SK, Lee KD, Woodle MC, Lasic DD, Redemann C, Martin FJ. *Proc Natl Acad Sci U S A* 1991;88:11460. [PubMed: 1763060]
8. Klibanov AL, Maruyama K, Torchilin VP, Huang L. *Febs Letters* 1990;268:235. [PubMed: 2384160]
9. Torchilin VP, Klibanov AL, Huang L, Odonnell S, Nossiff ND, Khaw BA. *Faseb Journal* 1992;6:2716. [PubMed: 1612296]
10. Jaschke A, Furste JP, Nordhoff E, Hillenkamp F, Cech D, Erdmann VA. *Nucleic Acids Research* 1994;22:4810. [PubMed: 7984434]
11. Jones DS, Hachmann JP, Osgood SA, Hayag MS, Barstad PA, Iverson GM, Coutts SM. *Bioconjugate Chemistry* 1994;5:390. [PubMed: 7849067]
12. Kabanov AV, Vinogradov SV, Suzdaltseva YG, Alakhov VY. *Bioconjugate Chemistry* 1995;6:639. [PubMed: 8608176]
13. Wang S, Lee RJ, Cauchon G, Gorenstein DG, Low PS. *Proc Natl Acad Sci U S A* 1995;92:3318. [PubMed: 7724560]
14. Nagasaka T, Kobayashi T, Muramatsu H, Fujimoto H, Matsuo I, Ajisaka K, Kadomatsu K, Hayashi S, Yokoyama I, Hayakawa A, Muramatsu T, Takagi H. *Biochem Biophys Res Commun* 1997;232:731. [PubMed: 9126345]
15. Sawhney AS, Pathak CP, Hubbell JA. *Macromolecules* 1993;26:581.
16. Burdick JA, Anseth KS. *Biomaterials* 2002;23:4315. [PubMed: 12219821]
17. Kim Y, Klutz AM, Jacobson KA. *Bioconjugate Chemistry* 2008;19:1660. [PubMed: 18610944]
18. Kojima C, Kono K, Maruyama K, Takagishi T. *Bioconjugate Chemistry* 2000;11:910. [PubMed: 11087341]
19. Luo D, Haverstick K, Belcheva N, Han E, Saltzman WM. *Macromolecules* 2002;35:3456.
20. Chun D, Wudl F, Nelson A. *Macromolecules* 2007;40:1782.
21. Alexander S. *Journal De Physique* 1977;38:983.
22. de Gennes PG. *Adv Colloid Interface Sci* 1987;27:189.
23. Lee H, Venable RM, MacKerell AD, Pastor RW. *Biophys J* 2008;95:1590. [PubMed: 18456821]
24. Bedrov D, Ayyagari C, Smith GD. *Journal of Chemical Theory and Computation* 2006;2:598.
25. Fischer J, Paschek D, Geiger A, Sadowski G. *J Phys Chem B* 2008;112:13561. [PubMed: 18839987]
26. Chen T, Hynninen AP, Prud'homme RK, Kevrekidis IG, Panagiotopoulos AZ. *J Phys Chem B* 2008;112:16357. [PubMed: 19367859]
27. Srinivas G, Discher DE, Klein ML. *Nature Materials* 2004;3:638.
28. Srinivas G, Shelley JC, Nielsen SO, Discher DE, Klein ML. *J Phys Chem B* 2004;108:8153.
29. Marrink SJ, Risselada HJ, Yefimov S, Tieleman DP, de Vries AH. *J Phys Chem B* 2007;111:7812. [PubMed: 17569554]
30. Marrink SJ, de Vries AH, Mark AE. *J Phys Chem B* 2004;108:750.
31. Monticelli L, Kandasamy SK, Periole X, Larson RG, Tieleman DP, Marrink SJ. *Journal of Chemical Theory and Computation* 2008;4:819.
32. Lee H, Larson RG. *J Phys Chem B* 2008;112:7778. [PubMed: 18543869]
33. Lee H, Larson RG. *J Phys Chem B* 2008;112:12279. [PubMed: 18767788]

34. Baoukina S, Monticelli L, Risselada HJ, Marrink SJ, Tieleman DP. *Proc Natl Acad Sci U S A* 2008;105:10803. [PubMed: 18669655]
35. Monticelli L, Kandasamy SK, Periolo X, Larson RG, Tieleman DP, Marrink SJ. *Journal of Chemical Theory and Computation* 2008;4:819.
36. Risselada HJ, Marrink SJ. *Proc Natl Acad Sci U S A* 2008;105:17367. [PubMed: 18987307]
37. Yelimov S, van der Giessen E, Onck PR, Marrink SJ. *Biophys J* 2008;94:2994. [PubMed: 18192351]
38. Mark JE, Flory PJ. *Journal of the American Chemical Society* 1965;87:1415.
39. Kienberger FPPV, Kada G, Gruber HJ, Riener C, Schindler H, Hinterdorfer P. *Single Molecules* 2000;1:123.
40. Kuga S. *Journal of Chromatography* 1981;206:449.
41. Haber C, Ruiz SA, Wirtz D. *Proc Natl Acad Sci U S A* 2000;97:10792. [PubMed: 10984514]
42. Doi, M.; Edwards, SF. *The theory of polymer dynamics*. Clarendon Press; Oxford: 1986.
43. Devanand K, Selser JC. *Macromolecules* 1991;24:5943.
44. Rangelov S, Brown W. *Polymer* 2000;41:4825.
45. Tanford, C. *Physical Chemistry of Macromolecules*. John Wiley & Sons; New York: 1961.
46. Thiagarajan P, Chaiko DJ, Hjelm RP. *Macromolecules* 1995;28:7730.
47. Lindahl E, Hess B, van der Spoel D. *Journal of Molecular Modeling* 2001;7:306.
48. Berendsen HJC, Postma JPM, Vangunsteren WF, Dinola A, Haak JR. *Journal of Chemical Physics* 1984;81:3684.
49. Brooks BR, Bruccoleri RE, Olafson BD, States DJ, Swaminathan S, Karplus M. *Journal of Computational Chemistry* 1983;4:187.
50. Vorobyov I, Anisimov VM, Greene S, Venable RM, Moser A, Pastor RW, MacKerell AD. *Journal of Chemical Theory and Computation* 2007;3:1120.
51. Jorgensen WL, Chandrasekhar J, Madura JD, Impey RW, Klein ML. *Journal of Chemical Physics* 1983;79:926.
52. Durell SR, Brooks BR, Bennaïm A. *J Phys Chem* 1994;98:2198.
53. Lamoureux G, Roux B. *Journal of Chemical Physics* 2003;119:3025.
54. Hoover WG. *Physical Review A* 1985;31:1695. [PubMed: 9895674]
55. Nose S, Klein ML. *Journal of Chemical Physics* 1983;78:6928.
56. Andersen HC. *Journal of Chemical Physics* 1980;72:2384.
57. Darden T, York D, Pedersen L. *Journal of Chemical Physics* 1993;98:10089.
58. Allen, MP.; Tildesley, DJ. *Computer Simulation of Liquids*. Oxford University Press; New York: 1987.
59. Cantor, CR.; Schimmel, PR. *Biophysical Chemistry*. W. H. Freeman and Co; New York: 1980.
60. Venable RM, Chen LE, Pastor RW. *J Phys Chem B* 2009;113:5855. [PubMed: 19351117]
61. Press, WH.; Flannery, BP.; Teukolsky, SA.; Vetterling, WT. *Numerical Recipes*. Cambridge University Press; Cambridge, UK: 1987.
62. Yeh IC, Hummer G. *J Phys Chem B* 2004;108:15873.
63. Fuhrmans, M.; Sanders, BP.; Marrink, SJ.; de Vries, AH. *Theoretical Chemistry Accounts: Theory, Computation, and Modeling*. 2009.
64. Thirumalai, D.; Ha, BY. *Theoretical and mathematical models in polymer research*. Grosberg, A., editor. Academic Press; San Diego: 1998. p. 1
65. Abbott NL, Blankschtein D, Hatton TA. *Macromolecules* 1992;25:3932.
66. Branca C, Faraone A, Magazu S, Maisano G, Migliardo P, Villari V. *J Mol Liq* 2000;87:21.
67. Hansen PL, Cohen JA, Podgornik R, Parsegian VA. *Biophys J* 2003;84:350. [PubMed: 12524288]
68. Hristova K, Kenworthy A, McIntosh TJ. *Macromolecules* 1995;28:7693.
69. Hristova K, Needham D. *Macromolecules* 1995;28:991.
70. Kenworthy AK, Hristova K, Needham D, McIntosh TJ. *Biophys J* 1995;68:1921. [PubMed: 7612834]
71. Kenworthy AK, Simon SA, McIntosh TJ. *Biophys J* 1995;68:1903. [PubMed: 7612833]
72. Product data sheet. Ferro Fine Chemicals; Cleveland, OH:

73. Humphrey W, Dalke A, Schulten K. *Journal of Molecular Graphics* 1996;14:33. [PubMed: 8744570]

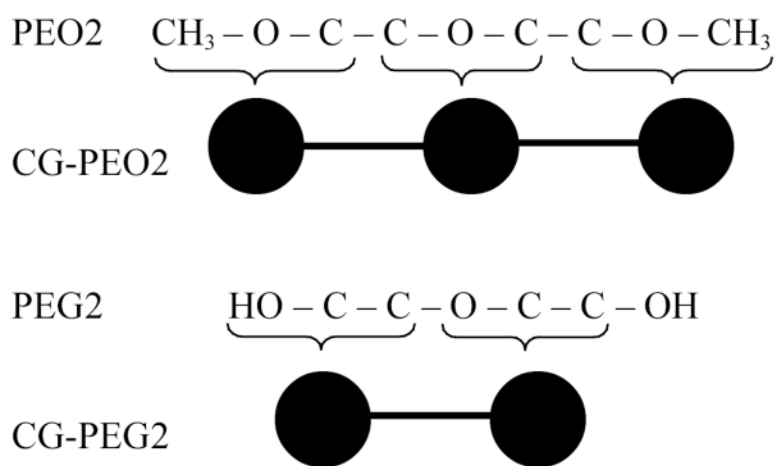


Figure 1.
PEO2, PEG2, and their coarse-grained equivalents.

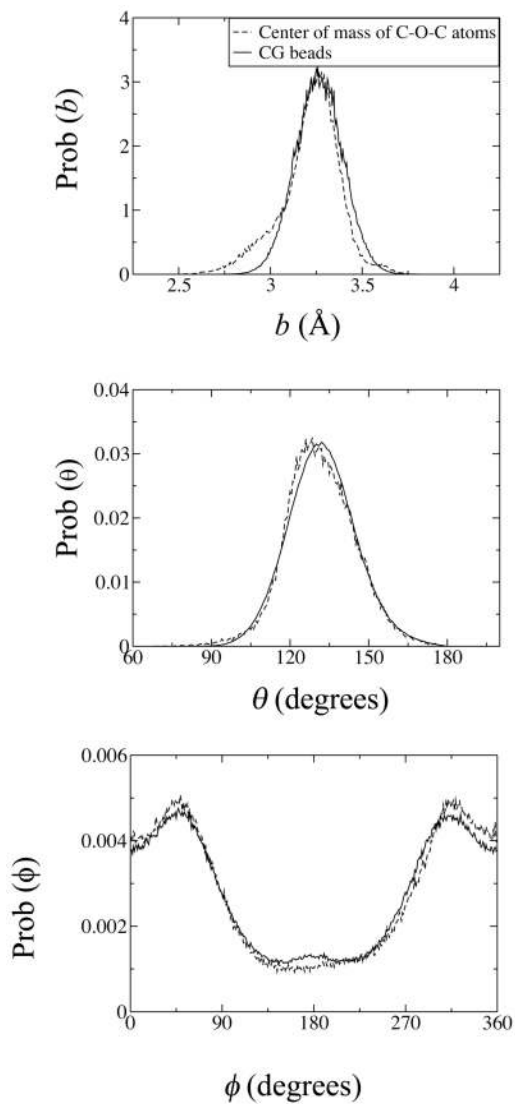


Figure 2. Probability distributions of bond lengths (b , top), angles (θ , middle), and dihedrals (ϕ , bottom) of PEO36 from atomic²³ and CG models.

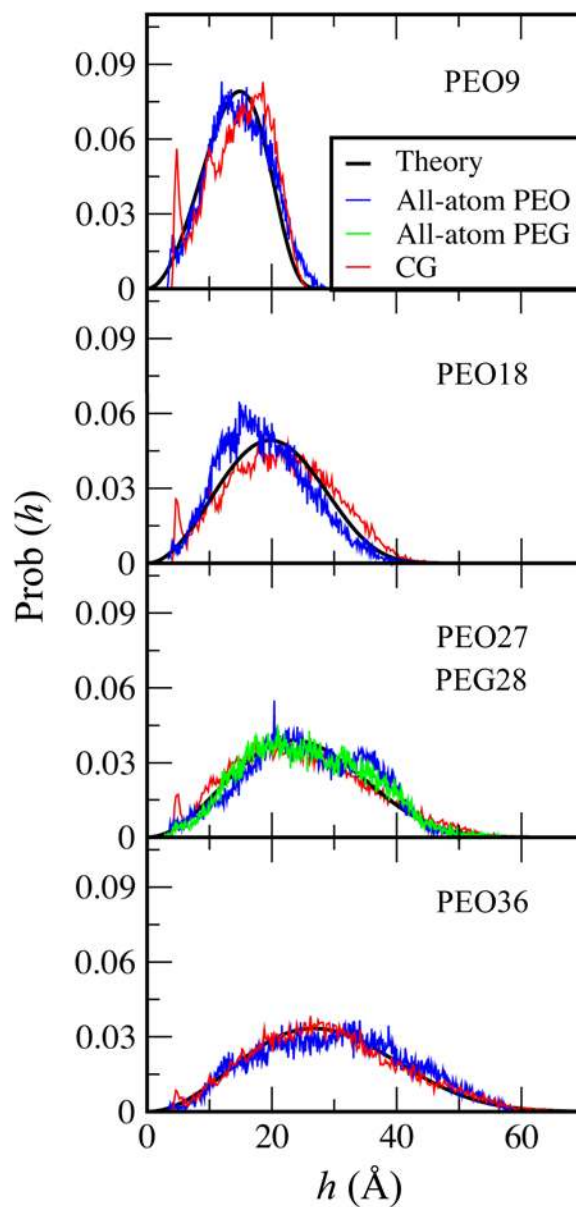


Figure 3. Probability distributions of end-to-end distances (h) for PEO9, PEO18, PEO27, PEO36, and PEG28 from all-atom simulations,²³ CG simulations, and worm-like chain model (Eq. 10 with $\lambda=3.7$ Å). As illustrated in Figure 1, PEO27 and PEG28 have the same number of beads in a CG model.

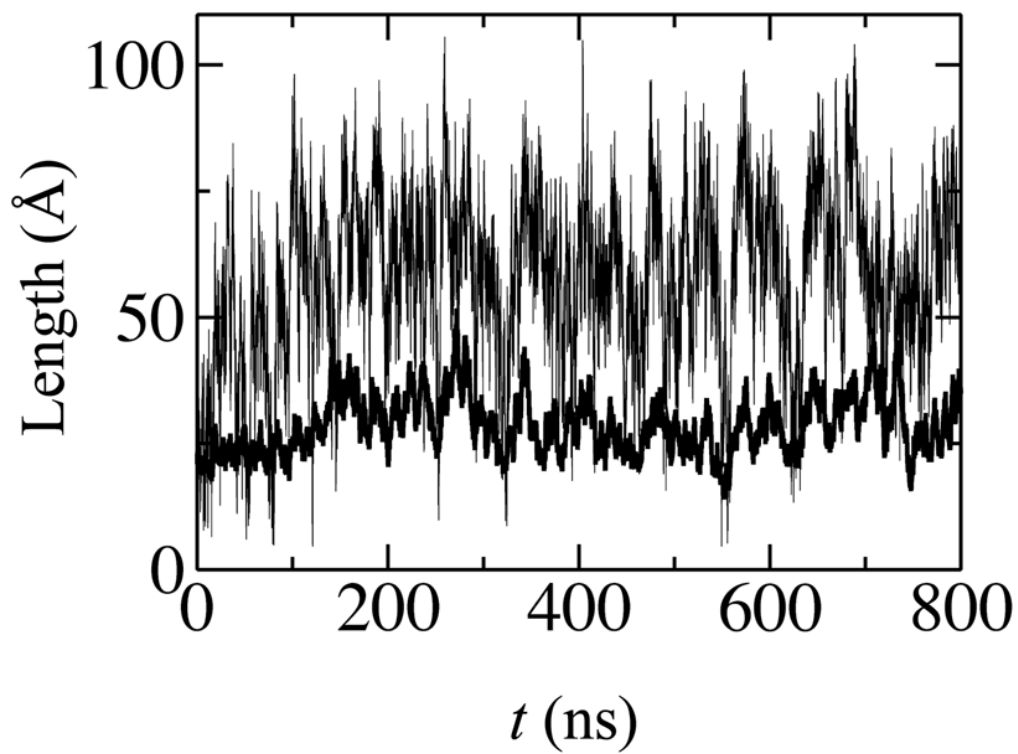


Figure 4. Time series of the end-to-end distance (thin line) and radius of gyration (thick line) for PEO158.

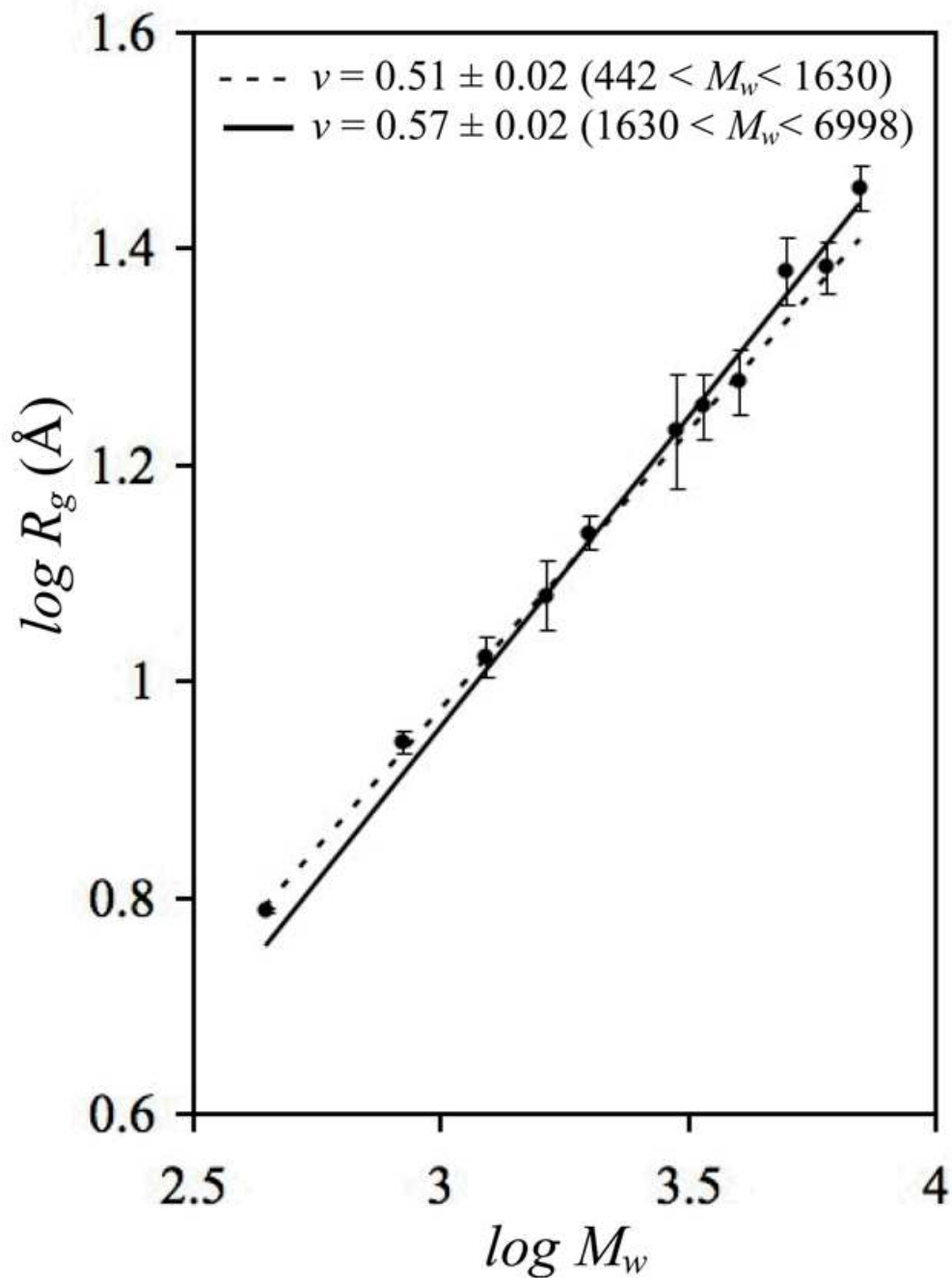


Figure 5. $\log R_g$ versus $\log M_w$ from simulations of PEO9 to PEO158. Slopes (ν) are calculated for two regions ($442 < M_w < 1630$ and $1630 < M_w < 6998$). Error bars on points in plot signify 95% confidence intervals; errors on fitted values are standard errors.

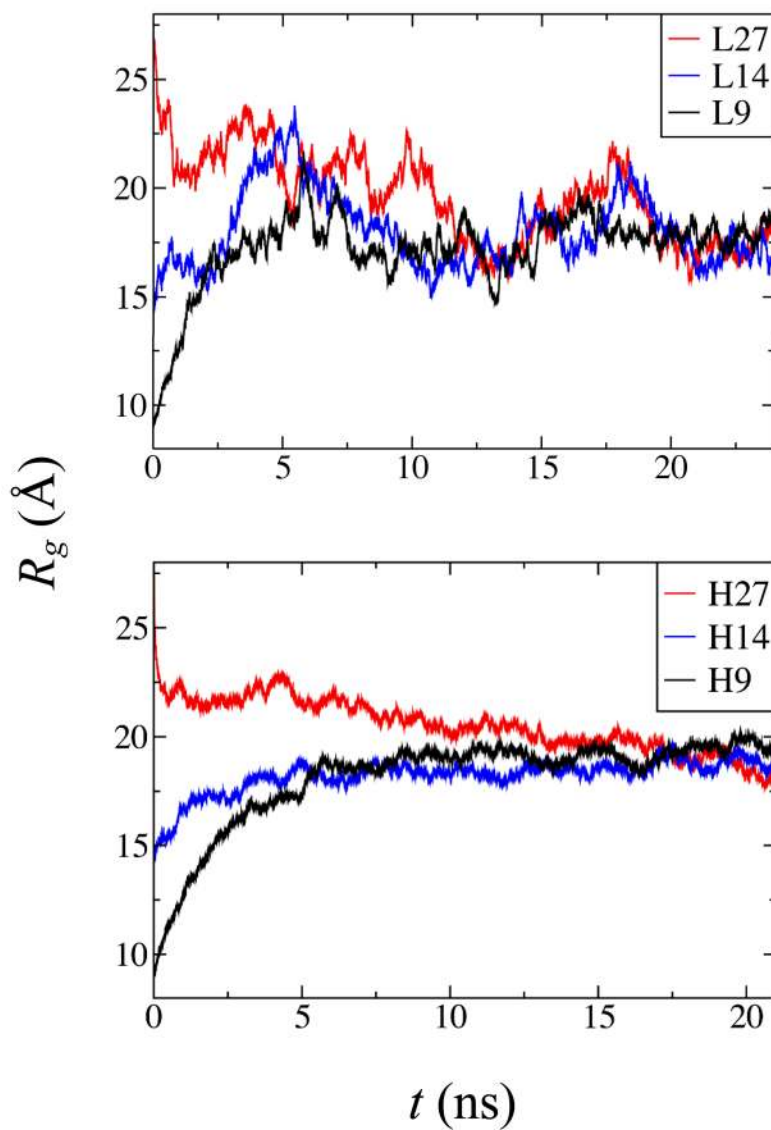


Figure 6. Average radii of gyration of five all-atom PEO76 at concentration of 26 mg/cm³ (L27, L14, L9), and 27 all-atom PEO76 at 146 mg/cm³ (H27, H14, H9). (See Section 2.2.b for nomenclature)

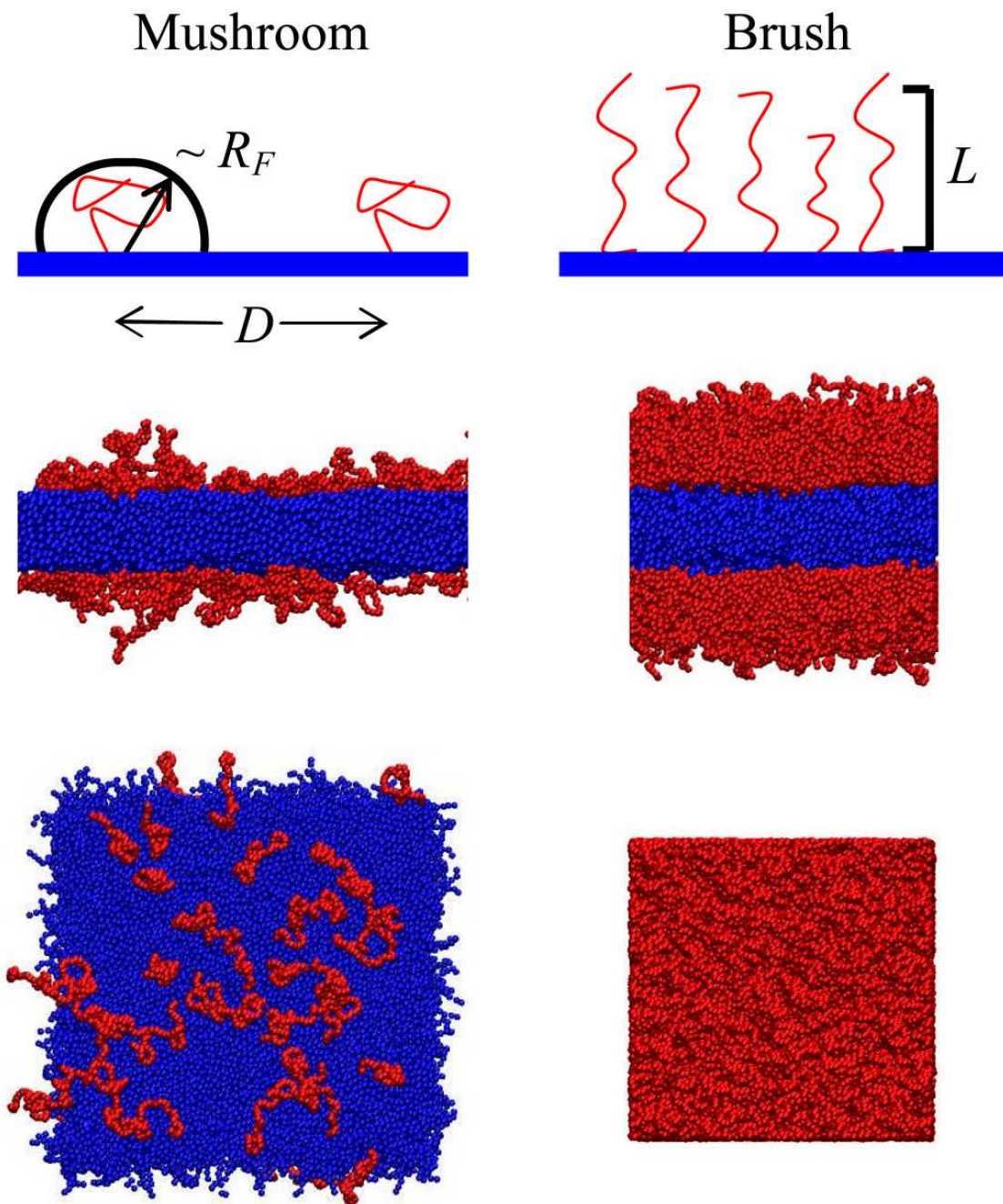


Figure 7. Schematic representations of the mushroom and brush configurations (top), and snapshots of the side (middle) and top-down (bottom) views at the end of simulations of PEO44 (red) and a hydrophobic surface (blue) with $D = 44 \text{ \AA}$ (left) and $D = 12 \text{ \AA}$ (right). The images were created with Visual Molecular Dynamics.⁷³

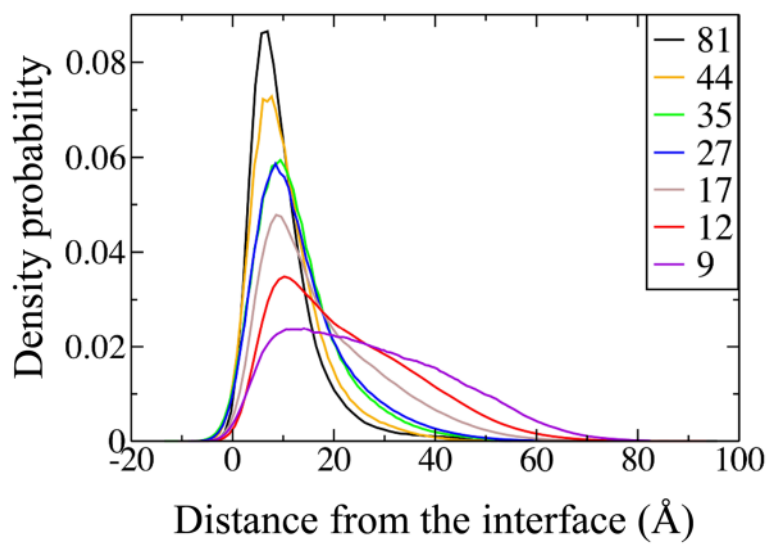


Figure 8. Density probabilities of PEO44 as a function of distance from the PEO44-surface interface ($D = 9\text{--}81$ Å).

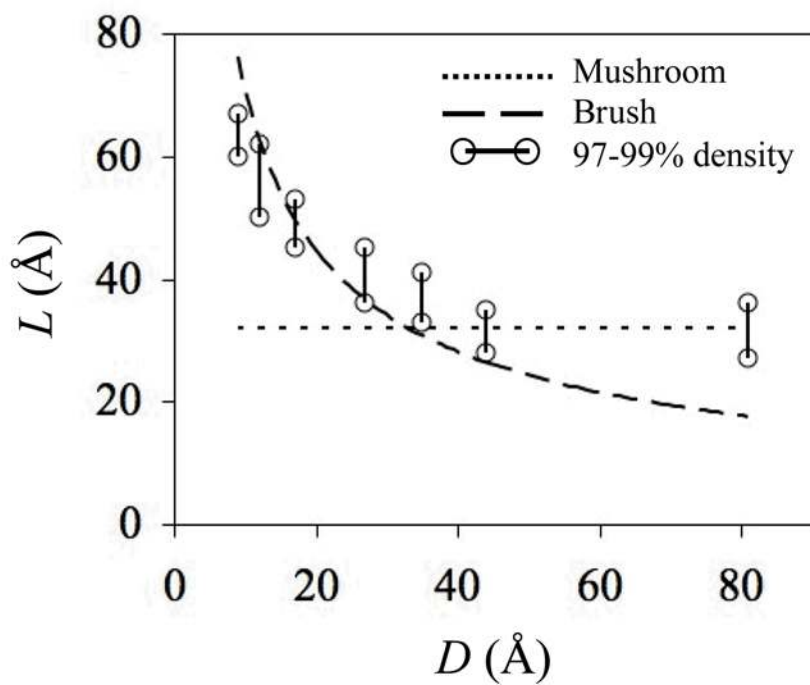


Figure 9. Thickness of the PEO44 layer (L), calculated from 97–99% densities, as a function of the distance between the grafting points of PEO44 (D). Dotted and dashed lines are from Eqns. 11 and 12, respectively, with $N = 45$, $a = 3.3$ Å.

Table 1

Parameters for nonbonded and bonded interactions for CG PEO.

	Nonbonded (LJ)		Bonded						
	σ (Å)	ε (kJ mol ⁻¹)	b_0 (Å)	K_b (kJ mol ⁻¹ nm ⁻²)	θ_0 (°)	K_θ (kJ mol ⁻¹)	ϕ_0 (°)	K_ϕ (kJ mol ⁻¹)	n
PEO-PEO	4.3	3.375	3.30	17000	130	85	180	1.96	1
							0	0.18	2
							0	0.33	3
PEO-W	4.7	4.0					0	0.12	4
W-W	4.7	5.0							

Table 2

Simulated and experimental⁷² densities of low molecular weight PEO_n. PEO1 corresponds to dimethoxyethane, CH₃-O-CH₂-CH₂-O-CH₃ and PEO2 is CH₃-O-CH₂-CH₂-O-CH₂-CH₂-O-CH₃.

<i>n</i>	Sim (g/cm ³)	Exp (g/cm ³)	err (%)
1	0.937	0.868	8.0
2	1.002	0.945	6.0
3	1.034	0.986	4.9
4	1.055	1.013	4.2
5	1.067	1.040	2.0

Table 3

Radius of gyration R_g and root mean squared end-to-end distance $\langle h^2 \rangle^{1/2}$ for coarse-grained and all-atom PEO of length n . The value at each molecular weight (M_w) is averaged from the four and two replicate simulations, respectively for CG and all-atom simulations. All atom results for PEO9-PEO36 are from reference ²³.

n (M_w)	R_g (Å)		$\langle h^2 \rangle^{1/2}$ (Å)	
	CG	All atom	CG	All atom
9 (442)	6.3 ± 0.1	6.4 ± 0.1	15.7 ± 0.1	15.5 ± 0.4
18 (838)	9.1 ± 0.1	8.8 ± 0.2	22.6 ± 0.3	20.0 ± 0.7
27 (1234)	11.1 ± 0.1	11.2 ± 0.3	27.2 ± 0.6	27.6 ± 1.4
36 (1630)	12.7 ± 0.2	13.2 ± 0.5	30.9 ± 0.8	32.1 ± 2.2
44 (1982)	14.5 ± 0.2		36.0 ± 0.8	
67 (2994)	17.9 ± 1.6		43.6 ± 3.3	
76 (3390)	19.1 ± 0.7	20.4 ± 0.8	46.1 ± 1.5	49.6 ± 2.1
90 (4006)	19.9 ± 0.4		46.3 ± 1.5	
112 (4974)	25.2 ± 0.5		56.3 ± 1.1	
135 (5986)	25.6 ± 0.7		54.2 ± 2.4	
158 (6998)	29.8 ± 0.5		61.2 ± 4.5	

Table 4

Diffusion coefficients D ($10^{-6} \text{ cm}^2\text{s}^{-1}$) and hydrodynamic radii R_h (\AA) from CG and all-atom models; experimental R_h are interpolated.

n	Coarse-grained		All-atom ²³		Experiment ⁴⁰
	D_{PGC}^a	D_{sim}^b	R_h	R_h	R_h
9	6.89 ± 1.57	7.68	3.8 ± 0.9	4.8 ± 0.6	5.9
18	2.82 ± 0.63	3.61	8.0 ± 1.8	7.5 ± 0.5	8.2
27	2.83 ± 0.60	3.62	7.9 ± 1.7	9.9 ± 1.4	9.9
36	2.26 ± 0.50	3.05	9.4 ± 2.1	13.1 ± 5.9	11.4
44	2.20 ± 0.36	2.85	10.1 ± 1.7		12.7
67	0.89 ± 0.12	1.54	18.5 ± 2.5		16.0
76	1.10 ± 0.19	1.75	16.3 ± 2.8		17.2
76 ^c	0.98 ± 0.14	1.57	17.4 ± 2.5		17.2
158	0.45 ± 0.07	1.10	25.9 ± 4.0		25.9

^a Calculated directly from trajectory

^b Corrected for artifacts arising from periodic boundary conditions (Eq. 5).

^c Calculated from the system with 8 copies of PEO76 at 21 mg/cm³

Table 5

Average radii of gyration of multiple copies of PEO76 with different concentrations in all-atom and CG simulations. Final R_g were calculated by averaging after 10 ns for all-atom simulations at low concentration, after 15 ns for all-atom simulations at high concentration, and after 100 ns for CG simulations.

	Concentration (mg/cm ³)	Number of PEO76	R_g (Å)	
			Initial	Average
All-atom (21 ns)	26	5	9	17.7 ± 0.3
		5	14	17.6 ± 1.4
		5	27	18.4 ± 0.6
	146	27	9	19.3 ± 0.3
		27	14	18.8 ± 0.1
		27	27	19.2 ± 1.4
CG (800 ns)	21	8	24	18.9 ± 1.1
	148	72	24	18.6 ± 0.1
Experiment ⁴⁶	30			19.7

Table 6

Size of mushroom and thickness of brush calculated from simulations of PEO44 ($N = 45$, $a = 3.3 \text{ \AA}$) and the Alexander-de Gennes theory.²² Values from simulations were averaged over the last 100 ns. All lengths are in \AA .

Coverage (Mole %)	D	Size of mushroom		Thickness of brush		
		Simulation	$\langle l^2 \rangle^{1/2}$	Theory R_p , Eq.11	Simulation	97–99% density
1	81	28 ± 3		32	27–36	18
4	44	33 ± 1		32	28–35	26
6	35	33 ± 1		32	33–41	31
11	27	34 ± 1		32	36–45	37
25	17	37 ± 1		32	45–53	50
50	12	41 ± 1		32	50–62	63
100	9	47 ± 1		32	60–67	76