

## A Comparison between Enzyme Immunoassay and HPLC for Ochratoxin A Detection in Green, Roasted and Instant Coffee

Simone Fujii<sup>1</sup>, Elisabete Yurie Sataque Ono<sup>2</sup>, Ricardo Marcelo Reche Ribeiro<sup>1</sup>, Fernanda Garcia Algarte Assunção<sup>1</sup>, Cássia Reika Takabayashi<sup>1</sup>, Tereza Cristina Rocha Moreira de Oliveira<sup>1</sup>, Eiko Nakagawa Itano<sup>3</sup>, Yoshio Ueno<sup>4</sup>, Osamu Kawamura<sup>5</sup> and Elisa Yoko Hirooka<sup>1\*</sup>

<sup>1</sup>Departamento de Tecnologia de Alimentos e Medicamentos; <sup>2</sup> Departamento de Bioquímica; <sup>3</sup>Departamento de Ciências Patológicas; Universidade Estadual de Londrina; hirooka@uel.br, C. P. 6001; 86051990; Londrina - PR - Brasil. <sup>4</sup>Faculty of Pharmaceutical Science; Science University of Tokyo; Shinjukuku Tokyo - 162-0812 Japan. <sup>5</sup>Department of Biochemistry and Food Science; Faculty of Agriculture; Kagawa University; Ikenobe; Miki-cho; Kita-gun; Kagawa 761-0765 - Japan

### ABSTRACT

An indirect competitive enzyme-linked immunosorbent assay (ic-ELISA) for ochratoxin A (OTA) detection in green, roasted and instant coffees was developed using anti-OTA monoclonal antibody. Immunological reagents prepared were OTA-BSA (4.76 µg/mL), anti-OTA.7 MAb (2x10<sup>3</sup>-fold dilution) and HRP-anti IgG (10<sup>3</sup>-fold dilution). The detection limit was 3.73 ng OTA/g and correlation coefficients (r) between this immunoassay and high performance liquid chromatography were 0.98 for green coffee, 0.98 for roasted and 0.86 for instant. OTA levels detected by ic-ELISA were higher than by HPLC, with ELISA/HPLC ratio of 0.66 - 1.46 (green coffee), 0.96 - 1.11 (roasted) and 0.93 - 1.82 (instant). ELISA recoveries for OTA added to coffee (5 - 70 ng/g) were 81.53 % for green coffee, 46.73 % for roasted and 64.35 % for instant, while recoveries by HPLC were 80.54 %, 45.91 % and 55.15 %, respectively. Matrices interferences were minimized by samples dilution before carrying out the ELISA assay. The results indicate that MAb-based ic-ELISA could be a simple, sensitive and specific screening tool for OTA detection, contributing to quality and safety of coffee products.

**Key words:** Ochratoxin, immunoassay, HPLC, monoclonal antibody, coffee

### INTRODUCTION

The occurrence of ochratoxin A in agricultural staples has been a topic of concern in food assurance due to human and animal health hazard (Petzinger and Weidenbach, 2002). The toxicological properties of OTA, a secondary metabolite produced by *Aspergillus* and

*Penicillium* species, include nephrotoxicity, teratogenicity, citotoxicity and genotoxicity (Grosso et al., 2003; Accensi et al., 2004). Cereals and derived products are the major contamination source of OTA, but the occurrence of this mycotoxin in other commodities has also been reported, including coffee, cocoa, spices, dried fruits, beer, wine and animal products (Cholmakov Bodechtel et al., 2000; Taniwaki et al., 2003;

\* Author for correspondence

Blesa et al., 2004; Saez et al., 2004). The maximum limit of OTA has been set in several countries with values ranging from 0.5 to 5 µg/kg for baby food, 5 µg/kg for cereals, 3 µg/kg for cereals products and 5 a 300 µg/kg for animal feed (Commission Regulation, 2002; Berg, 2003; Fonseca, 2005). In Brazil, a specific guideline for OTA has not been established even for food or feed (Prado et al., 2000; Fonseca, 2005).

Regarding the fact that contamination of commodities by ochratoxin A is unavoidable, the effectiveness of its control depends on a rigorous monitoring program. Sensitive and accurate analytical methodologies are essential to minimize the exposure, where the conventional techniques for OTA detection include thin layer chromatography (TLC) (Pittet and Royer, 2002), high performance liquid chromatography (HPLC) (Sibanda et al., 2002; Blesa et al., 2004), liquid chromatography/mass spectrometry (LC/MS) (Lindenmeier et al., 2004) and fluorometry (Chiavaro et al., 2002). HPLC is the most commonly used method for ochratoxin determination (Blesa et al., 2004; Dall'Asta et al., 2004), but it requires extensive clean-up of sample extract, a trained staff, and it is time-consuming in addition to its high cost and use of harmful solvents (Sydenham and Shephard, 1996)

Immunoassays provide an attractive and promising alternative for ochratoxin detection in food due to high specificity, sensitivity, simplicity, potential for automation and possibility of use under field conditions (Chu, 1984; Hefle, 1995). Development of polyclonal (PAb) and monoclonal antibody (MAb) against OTA-protein conjugate allowed immunoassay to become a basic and useful tool for OTA screening (Kawamura et al., 1989; Thirumala-Devi et al., 2000). Kawamura et al. (1989) developed a highly sensitive enzyme linked immunosorbent assay (ELISA) for OTA based on MAb antibodies with detection limit of 50 pg/mL, and low cross-reactivity with analogues and other mycotoxins.

In the present work, an indirect competitive ELISA (ic-ELISA) based on anti-OTA MAb for OTA detection in green, roasted and instant coffees was developed. Its performance was evaluated and compared with HPLC as well as the behavior of matrices components as interferents.

## MATERIALS AND METHODS

### Reagents and Materials

Anti-OTA.7 MAb (cross-reactivity of 79.4 % for OTC) was prepared at Science University of Tokyo, Japan (Kawamura et al., 1989). OTA standard, ovalbumin (OVA), bovine serum albumin (BSA), horseradish peroxidase (HRP) labeled goat anti-mouse IgG (HRP-anti-IgG), 1-ethyl-3-(3-diethylaminopropyl)-carbodiimide (EDPC) were purchased from Sigma Chemical Co. (St Louis, MO, USA). 3,3',5,5'-tetramethylbenzidine (TMB) was from Dojindo (Japan). Hydrogen peroxide (30 %) was acquired from Merck KGaA (Darmstadt, Germany) and dimethyl sulfoxide was from Trade TCI (Japan). Microtitre plates (96-wells) were from Corning (USA). Glass microfiber filters (GF/C 2.5 cm i.d) were purchased from Whatman International Ltd. (Maistone, England). Immunoaffinity columns for OTA (Ochratest<sup>TM</sup>) were from Vicam Inc. (Watertown, USA). Acetonitrile and acetic acid were HPLC grade (Mallinckrodt Baker, Inc., Phillipsburg, USA). All other chemicals were reagent grade.

### Samples

ELISA for OTA analysis was developed using coffee grain at cherry stage of maturation (green coffee) harvested at the university experimental farm. Roasted and instant coffees were commercially acquired and also used for testing the ELISA method. The samples were dried at 50 °C with circulating air to reach 12 % moisture level.

### Preparation of crude extracts (OTA extraction)

The OTA extraction from samples was carried out according to Kawamura et al. (1989) as modified by Fujii (2002). The coffee grains (50 g) were ground to 48 mesh in a laboratory mill (A10, Janke and Kunkel IKA<sup>®</sup> Labortechnik, Germany), and 5 g powder green, roasted or instant coffee were mixed with 50 mL acetonitrile-water (3:1, v/v). The suspension was sonicated (Ultrasonic cleaner Unique<sup>®</sup>, Brazil) for 10 min, shaken at 150 rpm for 10 min and centrifuged at 4000 x g for 10 min. The crude extract (40 mL) was mixed with 20 mL chloroform and 20 mL 0.5 % NaCl solution, and shaken at 150 rpm for 10 min. The chloroform layer (10 mL) was evaporated to dryness under a stream of nitrogen at 40 °C, dissolved in methanol-

1 % sodium bicarbonate (70:30, v/v) for green coffee and 1 % sodium bicarbonate for roasted and instant coffees. For the HPLC determination, the extracts were then cleaned up by immunoaffinity column. For the ic-ELISA assay the residue was diluted in methanol-phosphate buffered saline (PBS) (1:9, v/v) and directly analyzed without a clean up step.

#### **OTA recovery**

Green coffee (non-roasted) and derived products, which were OTA negative by HPLC (< 0.80 ng/g), were spiked with OTA (5.0, 10.0, 25.0, 50.0 and 70.0 ng/g) dissolved in methanol. The samples were extracted after standing for 16 h at 25 °C. OTA quantitation and recovery tests were carried out by HPLC and ic-ELISA.

#### **Ochratoxin analysis by HPLC**

OTA was analyzed essentially according to Pittet et al. (1996). The green coffee residue was dissolved in methanol-1 % sodium bicarbonate (70:30, v/v) and diluted in PBS-0.01 % Tween 20 (PBST, Sigma Chemical Co., USA) (1:4, v/v). For roasted and instant coffees, the residue was dissolved in 1 % sodium bicarbonate solution and diluted in PBST (1:1, v/v). The crude extracts were filtered (glass microfiber filters GF/C 2.5 cm) and 10 mL were applied to an immunoaffinity column (Ochratest, Vicam Inc., USA). After washing the column with PBST (10 mL) followed by ultra-pure water (Milli Q, Millipore Corporation, USA) (10 mL), the ochratoxins were eluted with 1.5 mL of methanol. The eluate was evaporated to dryness under stream of nitrogen at 40 °C, and the residue was dissolved in acetonitrile-water (1:1, v/v, 1 mL). OTA was analyzed by a reversed-phase, isocratic HPLC system (LC-10 AD pump, RF 535 fluorescence detector, Shimadzu, Japan) using a Nucleosil 100 C18 column 4 x 250 mm (Merck, Germany). Excitation and emission wavelengths were 335 and 475 nm, respectively. The eluent was acetonitrile-water-acetic acid (99:99:2, v/v/v) pH 3.0. The flow rate was 0.80 mL/min. The detection limit for OTA was 0.80 ng/g and OTA concentration was determined using a calibration curve ranging of 10 to 100 ng/mL.

#### **Ochratoxin analysis by ELISA**

##### **Standardization of ic-ELISA**

Immunological reagents were previously developed and standardized for ic-ELISA. OTA-BSA conjugate (4.76 mg/mL) was prepared by coupling OTA to BSA with water-soluble carbodiimide (EDPC) as described by Kawamura et al. (1989). The protein concentration was determined by Bradford method (Bradford, 1976). The cross-reactivity of provided anti-OTA.7 MAb with OTA analogues was previously determined (Kawamura et al., 1989). Concentration of OTA-BSA (4.76 µg/mL and 2.38 µg/mL), anti-OTA MAb (1000 and 2000-fold dilution) and HRP-anti-IgG (1000 to 3000-fold dilution) were checked by indirect ELISA for standardization purposes (50 % maximal binding, absorbance of 0.7 - 0.9) (Kawamura et al., 1989). The enzyme substrate solution (0.1 mg/mL TMB, 0.005 % H<sub>2</sub>O<sub>2</sub>) was prepared immediately before assay, adding 100 µL TMB (10 mg/mL of dimethyl sulfoxide) and 100 µL H<sub>2</sub>O<sub>2</sub> (0.5 % in water, v/v) in 10 mL 0.1 M sodium acetate buffer pH 5.0.

##### **Ic-ELISA procedure**

Microtitre plates were coated with 100 µL of 4.76 µg/mL OTA-BSA in 0.1 M carbonate-bicarbonate buffer pH 9.6 overnight at 4 °C. After washing four times with PBS-0.05 % Tween 20 (PBST), wells were blocked for 4 h at 25 °C with 200 µL of 0.1 % ovalbumin in PBS. After washing four times with PBST, 50 µL OTA standard or coffee extracts and 50 µL anti-OTA MAb (2000-fold dilution) in PBST were added, and incubation carried out for 18 h at 4 °C. After washing four times with PBST, 100 µL HRP-labeled goat anti-mouse IgG (10<sup>3</sup>-fold dilution in PBST) were added, incubated at 25 °C for 1 h, and washed as previously described. Then, 100 µL of TMB substrate solution were added. After 1 h at 25 °C, the reaction was stopped by adding 50 µL of 1 M H<sub>2</sub>SO<sub>4</sub> and absorption was measured at 450 nm (ELX800 ELISA reader, Bio-Tek Instruments, USA). Average absorbance was calculated from individuals absorbance obtained from triplicate wells and results were expressed as the percentage of binding: Binding (%) = (A<sup>+</sup>/A<sup>-</sup>) x 100, where A<sup>+</sup> is the mean absorbance in the presence of each sample or standard and A<sup>-</sup> is the mean absorbance in their absence. The OTA concentration was determined using a calibration curve (0.2 to 10.0

ng OTA/mL), plotting percent binding against OTA concentration.

#### **Interference of green, roasted and instant coffee matrices in ic-ELISA**

Matrix interference in ic-ELISA was evaluated using OTA negative coffee (green, roasted and instant) previously analyzed by HPLC (< 0.80 ng/g). The samples were extracted as above, diluted 10 to 2000-fold with methanol-PBST (1:9, v/v) and analyzed by ic-ELISA.

#### **Correlation analysis of ic-ELISA against HPLC**

Ochratoxin concentrations in artificially contaminated coffee (green, roasted and instant) detected by ic-ELISA were compared to HPLC analysis using a correlation test (Descriptive Statistic, Statistic software 5.0, StatSoft Inc., USA), to obtain linear regression equation and correlation coefficient.

## **RESULTS AND DISCUSSION**

The ELISA assay for OTA detection in green coffee and derived products were performed using anti-OTA.7 MAb, OTA-BSA conjugate as coating antigen and enzyme-labeled anti-IgG reagent. Monoclonal antibody (anti-OTA.7 MAb) used in this immunoassay exhibited high specificity with low cross-reactivity, unlimited supply using producer hybridoma, low background and constant affinity for a single epitope (Kawamura et al., 1989). Such profiles overcome the polyclonal sera which are a complex mixture of antibodies of different affinities, with fair signal strength, specificity and high background (Harlow and Lane, 1988; Gazzaz et al., 1992; Hefle, 1995).

The cross-reactivity of anti-OTA.7 MAb used in this study with OTA analogues was previously evaluated (Kawamura et al., 1989) regarding the false positive reaction in ELISA caused by chemically related compounds such as OTA precursors, other fungal metabolites, and compounds found in food and feed matrices (Sydenham et al., 1996). Analogue levels which caused 50 % inhibition of binding were calculated from MAb inhibition curve by ic-ELISA. The OTA.7-MAb cross-reacted with ochratoxin C (79.4 %), but (4 R)-4-hydroxy-ochratoxin A

(1.24 %), ochratoxin B (0.07 %) and ochratoxin  $\alpha$  (0.06 %) showed low reactivity. Nevertheless, OTC was uncommon in natural contamination suggesting its minor contribution in assay using this anti-OTA.7 MAb. It should be noted that OTC toxicity is much less than OTA (Kawamura et al., 1989).

The OTA-protein conjugate (OTA-BSA) was synthesized using the bifunctional reagent EDPC, which linked OTA via its reactive carboxyl group, and BSA carrier protein via its free amine group, performing an amide bond. The protein concentration of OTA-BSA conjugate was 4.76 mg/mL (data not shown). This reaction was simple, efficient and controllable and produced stable conjugate suitable in performing ic-ELISA (Chu, 1984; Harlow and Lane, 1988; Kawamura et al., 1989; Xiao et al., 1995).

Bovine serum albumin (BSA) was chosen as carrier protein due to its higher stability and OTA-protein molar ratio (16.7:1), when compared with ovalbumin (OVA) (0.3 - 0.5:1), in addition to its lower cost and higher solubility than keyhole limpet hemocyanin (KLH) (Kawamura et al., 1989; Harlow and Lane, 1988).

The levels of immunological reagents adequate for OTA analysis were standardized by i-ELISA (Table 1). The factors affecting sensibility were the amount of antigen bound to solid phase, antigen-antibody avidity, and type/number of labeled moieties used to label the antibody (Harlow and Lane, 1988; Hefle, 1995).

Table 1 shows the i-ELISA data carried out with OTA-BSA conjugate (4.76  $\mu$ g/mL and 2.38  $\mu$ g/mL), anti-OTA MAb (1000 and 2000-fold dilution) and anti-IgG-HRP (1000 to 3000-fold dilution). The 50% maximal binding was the chosen condition and yielded an absorbance of 0.7 to 0.9 (Kawamura et al., 1989). The standardized condition to carry out the ic-ELISA for OTA detection was OTA-BSA (4.76  $\mu$ g/mL), anti-OTA MAb (1/2000-fold dilution) and anti-IgG-HRP (1/10<sup>3</sup>-fold dilution). The absorbance reached was 0.903 (Table 1, experiment 2a). Lower or higher levels of these reagents lowered the sensibility of the immunoassay.

**Table 1** – Immunoassay standardization for OTA analysis: concentrations of OTA-BSA conjugate \*, anti-OTA MAb and HRP-labeled anti-IgG tested by i-ELISA.

Experiment	Dilutions (fold)			i-ELISA (A <sub>450nm</sub> ) <sup>a</sup>
	OTA-BSA*	anti-OTA-MAb	Anti-IgG-HRP	
1	1a	1000	1000	0.913
	1b	1000	1000	0.727
	1c	1000	1000	0.676
	1d	1000	1000	0.581
2	2a	1000	2000	0.903
	2b	1000	2000	0.692
	2c	1000	2000	0.555
	2d	1000	2000	0.500
3	3a	2000	1000	0.453
	3b	2000	1000	0.318
	3c	2000	1000	0.322
	3d	2000	1000	0.338
4	4a	2000	2000	0.431
	4b	2000	2000	0.433
	4c	2000	2000	0.374
	4d	2000	2000	0.314

\* protein concentration of 4.76 mg/mL (Bradford, 1976).

<sup>a</sup> mean of values in triplicate.

The enzyme-labeled anti-immunoglobulin antibody was chosen as secondary reagent for its commercial availability and with the large range of antigens it could be used. Furthermore, it did not modify the primary antibody avoiding loss of activity. In the assay, horseradish peroxidase-labeled anti-IgG antibody was detected using tetramethylbenzidine (TMB) as chromogenic substrate (Harlow and Lane, 1988; Hefle, 1995).

The competitive ELISA calibration curve for OTA (0.2 - 10.0 ng/mL) was prepared, and a nonlinear regression was adopted to maximize the assay range and to maintain a high degree of sensitivity (Fig. 1). The calibration curves were highly reproducible, as indicated by low standard deviations (SDs) (Fig. 1).

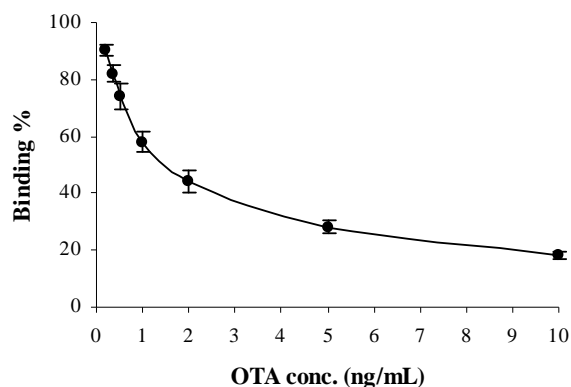
The detection limit of ic-ELISA for OTA was 0.20 ng OTA/mL and equivalent to 3.73 ng OTA/g sample, minimum concentration over 9.3 % inhibition (Fig. 1). This value corresponded to mean absorbance plus three times the SD of the measurements of three replicate wells of 0 ng OTA/mL (Ono et al., 2000). The sensibility of ic-ELISA was adequate for detecting OTA in coffee samples.

The accuracy and precision of ELISA were determined using OTA standards at 0.2 - 10.0 ng/mL range, where the assays were evaluated

repeatedly in different sets of wells of the same plate (intra-assay), or different plates in different days (inter-assay). Reproducibility and reliability of the ELISA assay were demonstrated by the low coefficient variations (CVs) (Table 2) of 1.78 - 6.95 % and 4.78 - 16.67 % for intra- and inter-assay, respectively.

The green, roasted and instant coffee matrices interferences in ic-ELISA were tested using OTA negative samples (Fig. 2). Matrix effect could be minimized by diluting the sample extract prior to carry out ELISA assay.

All kinds of coffee (green, roasted or instant) tested showed low matrix interference at dilution range from 100 to 2000-fold ( $p > 0.05$ ) (Fig. 2), indicating that 100-fold dilution of extract allowed reliable equivalent to HPLC data to be obtained. Higher matrix interference was observed in roasted and instant coffees when compared with green coffee and could be associated with chemical compounds resulting from roasting, extraction, concentration and spray dry process (França et al., 2001; Iguacu, 2005), besides usual components such as protein, carbohydrate, fatty acid, mineral salt and sugar (Pimenta et al., 2000).

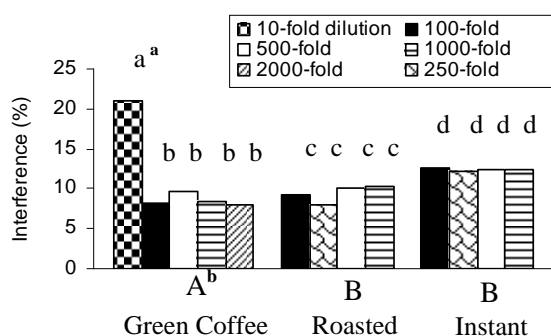


**Figure 1** – Calibration curve of ic-ELISA for OTA. Circles represent the mean binding from seven calibration curves obtained on different days over a 1-month period. Bars represent standard deviations. The detection limit was 0.20 ng OTA/mL, which was the minimum concentration over 9.3 % inhibition (three times the SD of 0 ng OTA/mL) detected by ic-ELISA.

**Table 2** – Intra- and interassay variations of ELISA assessed over a range of concentrations of OTA standard <sup>a</sup>.

OTA standard (ng mL <sup>-1</sup> )	OTA found			
	Intraassay (n = 3)		Interassay (n = 7)	
	Mean ± SD (ng mL <sup>-1</sup> )	CV (%)	Mean ± SD (ng mL <sup>-1</sup> )	CV (%)
0.20	0.23 ± 0.01	4.35	0.20 ± 0.01	5.00
0.35	0.33 ± 0.01	3.03	0.31 ± 0.04	12.90
0.50	0.47 ± 0.01	2.13	0.48 ± 0.08	16.67
1.00	0.81 ± 0.03	3.70	1.10 ± 0.12	10.91
2.00	1.87 ± 0.13	6.95	2.27 ± 0.30	13.21
5.00	5.58 ± 0.16	2.87	5.23 ± 0.25	4.78
10.00	9.55 ± 0.17	1.78	8.81 ± 0.50	5.68

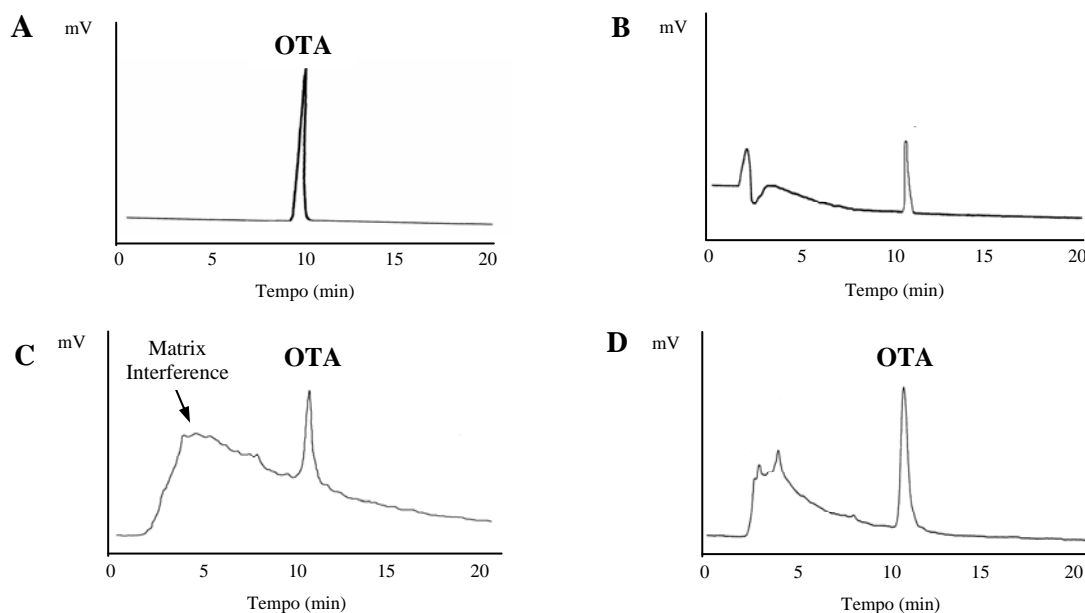
<sup>a</sup> Intra- and interassay variations were determined by replicate analyses for each concentrations of standards run in the same plate (n = 3) and by replicate of a set of standards run in different plates on different days (n = 7), respectively.



<sup>a</sup> Tukey test to different dilutions in each coffee modality.

<sup>b</sup> Tukey test to different coffee modality.

**Figure 2** – Matrix interference in ic-ELISA: effect of extract dilution (10 to 2000-fold) on OTA determination in green, roasted and instant coffees.



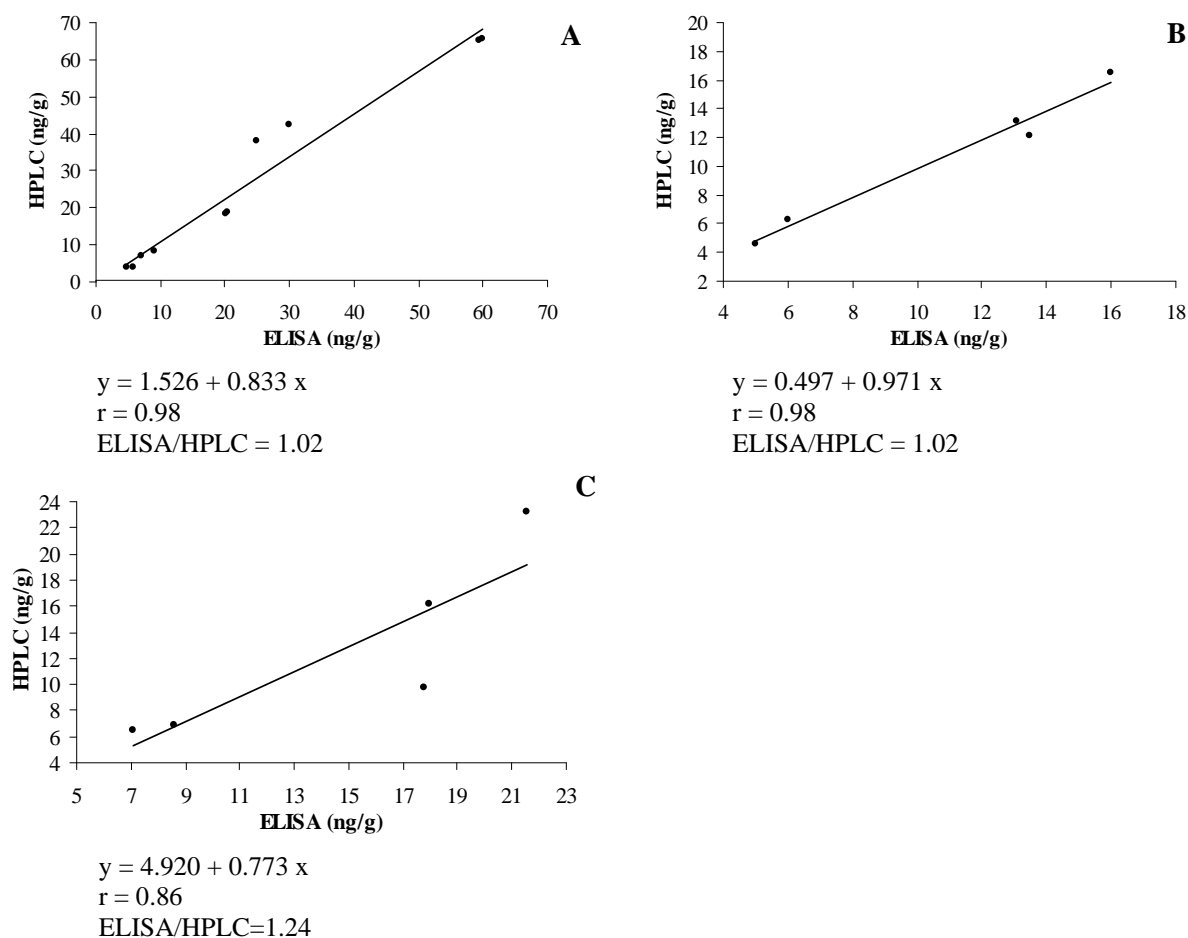
**Figure 3** – Matrices interferences of green, roasted and instant coffees in HPLC: (A) OTA standard; (B) artificially contaminated green coffee (8.19 ng/g); (C) artificially contaminated roasted coffee (20.59 ng/g); (D) artificially contaminated instant coffee (20.44 ng/g).

Several food matrix components could affect ELISA assay, such as non-specific interaction caused by high protein levels or large molecules causing steric hindrance of antibody-epitope binding leading to overestimate the real toxin level (Hefle, 1995; Pestka et al., 1995).

Fig. 3 shows the HPLC chromatograms of green, roasted, and instant coffee and interfering compounds could be observed in the chromatograms showing that HPLC methods shared the same problems with food matrices as ELISA.

The performance of ic-ELISA for OTA detection in coffee and the correlation between ELISA and HPLC were evaluated using artificially contaminated coffee (5 to 70 ng OTA/g). Fig. 4 correlated the data from OTA determination by

HPLC and by ic-ELISA. Immunoassay recorded higher values of OTA than HPLC in every kind of coffees tested, indicating either recovery losses during sample preparation in HPLC (clean up step) and/or food matrix effect during immunoassay (Pestka et al., 1994; Ono et al., 2000). Ochratoxin levels analyzed by ELISA were 0.66 to 1.46-fold higher than HPLC in green coffee (ELISA/HPLC ratio = 1.02), 0.96 to 1.11-fold in roasted coffee (ELISA/HPLC ratio = 1.02) and 0.93 to 1.82-fold in instant coffee (ELISA/HPLC ratio = 1.24) (Fig. 4). The correlation coefficients ( $r$ ) between the two methods were 0.98 for green coffee, 0.98 for roasted and 0.86 for instant and demonstrate the applicability of immunoassay (Fig. 4).



**Figure 4** – Correlation between HPLC and ic-ELISA data for ochratoxin determination in artificially contaminated coffee samples (5 - 70 ng/g). Axes x and y show ochratoxin concentration (ng/g) as determined independently by ELISA and HPLC methods. (A) green coffee; (B) roasted coffee; (C) instant coffee.

Table 3 shows the overall performance of ic-ELISA and HPLC comparing OTA recoveries. Green coffee spiked with 5 - 70 ng OTA/g exhibited recoveries of 55 - 106.1 % (mean of 81.53 %) by ic-ELISA while by HPLC the values were 74.76 - 93.41 % (mean of 80.54 %), demonstrating that adequate recovery and efficiency were achieved with anti-OTA.7 MAb (Table 3). Sibanda et al. (2001), using flow through enzyme immunoassay obtained OTA recoveries of 70 - 89 % in green coffee grains. Terada et al. (1986) reported OTA recovery of 81.5 % in green coffee grains using Sep-Pak C<sub>18</sub> prior to HPLC. Trucksess et al. (1999) obtained mean recovery of 86 % using immunoaffinity column and HPLC. However, coffee based products such as roasted and instant had low OTA recoveries by both ELISA and HPLC (Table 3). In

roasted coffee, OTA levels ranging of 10 - 50 ng/g resulted in recoveries of 32 - 55% (mean of 46.73 %) by ic-ELISA. But HPLC also showed similar data (45.91 %). The same pattern was observed with instant coffee, where mean recoveries were 64.35 % for ELISA and 55.15 % for HPLC (Table 3). In spite of the low recovery for roasted and instant coffees (Table 3), the applicability of immunoassay was supported by ELISA/HPLC ratios of 1.02 and 1.24, and by the correlation coefficients of 0.98 and 0.86 for roasted and instant coffee, respectively (Fig. 4). The correlation between ic-ELISA and HPLC indicated the effectiveness of anti-OTA.7 MAb for OTA determination in roasted and instant coffee and reliability of the immunoassay performed.



**Table 3** – Recoveries of OTA added to green, roasted and instant coffees in determinations performed by ic-ELISA and HPLC.

Coffee	OTA added (ng/g) <sup>c</sup>	HPLC <sup>a</sup>				Ic-ELISA <sup>b</sup>			
		OTA recovered (ng/g)	Recovery (%)	CV (%)	Recovery (mean)	OTA recovered (ng/g)	Recovery (%)	CV (%)	Recovery (mean)
Green	5	3.90 ± 0.06	78.00 ± 1.20	1.54	80.54 ± 7.53	5.31 ± 0.63	106.10 ± 12.60	11.88	81.53 ± 18.20
	10	7.59 ± 0.80	75.90 ± 8.00	10.54		7.98 ± 1.39	79.80 ± 13.90	17.42	
	25	18.69 ± 0.30	74.76 ± 1.20	1.61		20.36 ± 0.20	81.44 ± 0.80	1.00	
	50	40.31 ± 3.28	80.62 ± 6.56	8.14		27.50 ± 3.54	55.00 ± 7.08	12.87	
	70	65.39 ± 0.40	93.41 ± 0.57	0.61		59.70 ± 0.42	85.29 ± 0.60	0.70	
Roasted	10	5.40 ± 1.17	54.00 ± 11.70	21.67	45.91	5.50 ± 0.71	55.00 ± 7.10	12.91	46.73
	25	12.66 ± 1.76	50.64 ± 7.04	13.90	± 11.22	13.30 ± 0.30	53.20 ± 1.20	2.26	± 12.79
	50	16.55 ± 2.3	33.10 ± 4.6	13.89		16.00 ± 1.06	32.00 ± 2.12	6.63	
Instant	10	6.71 ± 0.26	67.10 ± 2.60	3.87	55.15	7.85 ± 1.06	78.50 ± 10.61	13.52	64.35
	25	13.00 ± 4.50	52.00 ± 18.00	34.62	± 10.73	17.88 ± 1.11	71.50 ± 4.44	6.21	± 18.77
	50	23.17 ± 4.26	46.34 ± 8.52	18.39		21.53 ± 3.25	43.06 ± 6.50	15.09	

<sup>a</sup> mean ± SD of 2 repetition in duplicate<sup>b</sup> mean ± SD of 2 repetition in triplicate<sup>c</sup> known quantities of OTA added to coffee previously estimated as negative for OTA by HPLC (< 0.80 ng/g).

The low recoveries of roasted and instant coffee could be attributable to inadequate extraction, i.e. acetonitrile-water (3:1, v/v) unable to extract OTA from such a complex matrix. Change of extraction solvent could improve the pattern, and further study was able to achieve OTA recovery of 87.94 % in green coffee using 0.1 M fosforic acid and dichlorometane (Ribeiro et al., 2005). Prado et al. (2000) obtained OTA recoveries of 80 and 82 % by HPLC in roasted and instant coffees, respectively, using methanol - 3 % sodium bicarbonate (1:1, v/v). Leoni et al. (2000) reported values of 99.7 % in roasted coffee and 98 % in instant coffee by HPLC, using 1 % sodium bicarbonate solution. However, the extraction procedures recorded by these authors required an additional clean up step (partition).

Thus, the present anti-OTA.7 MAb-based ic-ELISA could be effectively applied to OTA screening of green, roasted and instant coffee, with advantages of simplicity, sensitivity, without cleanup or concentration steps. The small volume of samples and reagents required to perform ELISA assays could also enable the analysis of a high number of samples using an ecologically safe technique at a relatively low cost.

## ACKNOWLEDGEMENTS

The authors would like to thank National Council of Scientific and Technological Development (CNPq, Brazil), CAPES-Brazil, Japan International Cooperation Agency (JICA) and Araucaria Foundation for financial support.

## RESUMO

ELISA competitivo indireto (ic-ELISA) baseado em anticorpos monoclonais foi desenvolvido para a detecção de ocratoxina A (OTA) em café verde, torrado e instantâneo. Os reagentes imunológicos necessários à reação consistiram de OTA-BSA (4,76 mg/mL), anti-OTA.7 MAb (diluído  $2 \times 10^3$ ) e anti IgG-HRP (diluído  $10^3$ ), apresentando limite de detecção de 3,73 ng OTA/g. Os coeficientes de correlação (r) entre o imunoensaio e cromatografia líquida de alta eficiência (CLAE) foram de 0,98 (café verde), 0,98 (torrado) e 0,86 (instantâneo). Ic-ELISA detectou valores superestimados de OTA em relação a CLAE, com valor ELISA/CLAE variando de 0,66 – 1,46 (café verde), 0,96 – 1,11 (torrado) e 0,93 – 1,82 (instantâneo). As recuperações médias de OTA adicionada em café (5 - 70 ng/g) foram de 81,53 % (café verde), 46,73 % (torrado) e 64,35 % (instantâneo) por ELISA, em relação a 80,54 %, 45,91 % e 55,15 % por CLAE, respectivamente. A

interferência de matriz no imunoenensaio foi minimizada pela diluição das amostras previamente à análise por ELISA. O ic-ELISA desenvolvido pode ser considerado uma técnica alternativa simples, sensível e específica para análise de OTA, contribuindo para a qualidade e segurança de produtos de café.

## REFERENCES

- Accensi F., Abarca M.L., Cabañes F.J. (2004), Occurrence of *Aspergillus* species in mixed feeds and component raw materials and their ability to produce ochratoxin A. *Food Microbiology*, **21**, 623-627.
- Berg B. (2003), How to establish international limits for mycotoxins in food and feed? *Food Control*, **14**, 4, 219-224.
- Blesa J., Berrada H., Soriano J.M., Moltó J.C., Mañes J. (2004), Rapid determination of ochratoxin A in cereals and cereals products by liquid chromatography. *Journal of Chromatography A*, **1046**, 127-131.
- Bradford M.M. (1976), A rapid and sensitive method for the quantification of microgram quantities of protein utilizing the principle of protein binding. *Analytical Biochemistry*, **72**, 5, 48-274.
- Chiavaro E., Lepiani A., Colla A., Bettoni P., Pari E., Spotti E. (2002), Ochratoxin A determination in ham by immunoaffinity clean-up and a quick fluorometric method. *Food Additives and Contaminants*, **19**, 6, 575-581.
- Cholmakov Bodechtel C., Wolff J., Gareis M., Bresch H., Engel G., Majerus P., Rosner H., Schneider R. (2000), Ochratoxin A: representative food consumption survey and epidemiological analysis. *Archives Fuer Lebensmittelhygiene*, **51**, 4/5, 111-115.
- Chu F.S. (1984), Immunoassays for analysis of mycotoxins. *Journal of Food Protection*, **47**, 562-569.
- Commission Regulation (EC) No. 472/2002 of March 2002 Amending Regulation (EC) No. 466/2001 Setting Maximum Levels for Certain Contaminants in Foodstuffs.
- Dall'Asta C., Galaverna G., Dossena A., Marchelli R. (2004), Reversed-phase liquid chromatographic method for determination of ochratoxin A in wine. *Journal of Chromatography A*, **1024**, 275-279.
- França A.S., Oliveira L.S., Borges, M.L.A., Vitorino M.D. (2001), Evolução da composição do extrato de café durante o processo de torrefação. *Revista Brasileira de Armazenamento*, Especial Café, Viçosa, **2**, 37-47.
- Fujii S. (2002), Imunoenensaio na detecção de ocratoxina A em café e efeito de cafeína sobre microbiota fúngica. Dissertação de Mestrado, Universidade Estadual de Londrina, Paraná, Brasil.
- Gazzaz S.S., Rasco B.A., Dong F.M. (1992), Application of immunochemical assays to food analysis. *Critical Reviews in Food Science and Nutrition*, **32**, 3, 197-229.
- Grosso F., Saïd S., Mabrouk I., Fremy J.M., Castegnaro M., Jemmali M., Dragacci S. (2003), New data on the occurrence of ochratoxin A in human sera from patients affected or not by renal diseases in Tunisia. *Food and Chemical Toxicology*, **41**, 8, 1133-1140.
- Harlow E., Lane D. (1988), *Antibodies: a laboratory manual*, ed. E. Harlow, D. Lane. Cold Spring Harbor Laboratory, New York.
- Hefle S.L. (1995), Immunoassay fundamentals. *Food Technology*, **49**, 2, 102-107.
- IGUAÇÚ - Companhia IGUAÇÚ de Café Solúvel. Available in: < <http://www.iguacu.com.br> >. Accessed in: 19 May 2005.
- Kawamura O., Sato S., Kajii H., Nagayama S., Ohtani K., Chiba J., Ueno Y. (1989), A sensitive Enzyme-Linked Immunosorbent assay of Ochratoxin A based on Monoclonal Antibodies. *Toxicon*, **27**, 8, 887-897.
- Leoni L.A.B., Valente Soares L.M., Oliveira P.L.C. (2000), Ochratoxin A in Brazilian roasted and instant coffees. *Food Additives and Contaminants*, **17**, 10, 867-870.
- Lindenmeier M., Schieberle P., Rychlik M. (2004), Quantification of ochratoxin A in food by a stable isotope dilution assay using high performance liquid chromatography tandem mass spectrometry. *Journal of Chromatography A*, **1023**, 57-66.
- Fonseca H. MICOTOXINAS on line - Legislação Nacional e Internacional de Micotoxinas. Available in: < <http://www.micotoxinas.com.br> >. Accessed in: 19 May 2005.
- Ono E.Y.S., Kawamura O., Ono M.A., Ueno Y., Hirooka E.Y. (2000), A comparative study of indirect competitive ELISA and HPLC for fumonisin detection in corn of the State of Paraná, Brazil. *Food Agricultural Immunology*, **12**, 1, 5-14.
- Pestka J.J., Abouzied M.N., Sutikno. (1995), Immunological assays for mycotoxin detection. *Food Technology*, **49**, 2, 102-107.
- Petzinger E., Weidenbach A. (2002), Mycotoxins in the food chain: the role of ochratoxins. *Livestock Production Science*, **76**, 245-250.
- Pimenta C.J., Costa L., Chagas S.J.R. (2000), Peso, acidez, sólidos solúveis, açúcares e compostos fenólicos em café (*Coffea arabica* L.) colhidos em diferentes estádios de maturação. *Revista Brasileira de Armazenamento*, Especial Café, Viçosa, **1**, 23-30.

- Pittet A., Royer D. (2002), Rapid, low cost thin layer chromatographic screening method for the detection of ochratoxin A in green coffee at control level of 10µg/kg. *Journal of Agricultural and Food Chemistry*, **50**, 2, 243-247.
- Pittet A., Tornare D., Huggett A., Viani R. (1996), Liquid chromatographic determination of ochratoxin A in pure and adulterated soluble coffee using an immunoaffinity column cleanup procedure. *Journal of Agricultural and Food Chemistry*, **44**, 3564-3569.
- Prado G., Oliveira M.S., Abrantes F.M., Santos L.G. dos, Veloso T., Barroso R.E. de S. (2000), Incidência de ocratoxina A em café torrado e moído e em café solúvel consumido na cidade de Belo Horizonte, MG. *Ciência e Tecnologia de Alimentos*, **20**, 2, 192-196.
- Ribeiro R.M.R., Fujii S., Takabayashi C.R., Nogari A.B., Silva M., Coelho A.R., Bernd L. P., Fungaro M.H.P., Ono E.Y.S., Lebre D.L., Miranda S.G., Kawamura O., Hirooka E.Y. (2005), Produção de ocratoxina A visando obtenção de reagente básico destinado ao controle de qualidade em alimentos. Paper presented at XIV Encontro Nacional de Analistas de Alimentos, 12-16 June, Goiânia, GO, Brazil.
- Saez J.M., Medina A., Gimeno-Adelantado J.V., Mateo R., Jiménez M. (2004), Comparison of different sample treatments for the analysis of ochratoxin A in must, wine and beer by liquid chromatography. *Journal of Chromatography A*, **1029**, 1-2, 125-133.
- Sibanda L., De Saeger S., Bauters T.G.M., Nelis H.J., Van Peteghem C. (2001), Development of a Flow through enzyme immunoassay and application in screening green coffee samples for ochratoxin A with confirmation by High Performance Liquid Chromatography. *Journal of Food Protection*, **64**, 10, 1597-1602.
- Sibanda L., De Saeger S., Van Peteghem C. (2002), Optimization of solid-phase clean-up prior to liquid chromatographic analysis of ochratoxin A in roasted coffee. *Journal of Chromatography A*, **959**, 1-2, 327-330.
- Sydenham E.W., Shephard G.S. (1996), Chromatographic and allied methods of analysis for selected mycotoxins. In *Progress in Food Contaminants Analysis*, ed. J. Gilbert. Blackie Academic and Professional, London, pp. 65-146.
- Sydenham E.W., Shephard G.S., Thiel P.G., Bird C., Miller, B.M. (1996), Determination of fumonisin in corn: evaluation of competitive immunoassay and HPLC techniques. *Journal of Agricultural and Food Chemistry*, **44**, 159-164.
- Taniwaki M.H., Pitt J.I., Teixeira A.A., Iamanaka B.T. (2003), The source of ochratoxin A and Brazilian coffee and its formation and relation to processing methods. *International Journal of Food Microbiology*, **82**, 2, 173-179.
- Terada H., Tsubouchi H., Yamamoto K., Hisada K., Sakabe Y. (1986), Liquid Chromatographic determination of Ochratoxin A in coffee beans and coffee products. *Journal of the Association of Official Analytical Chemists International*, **69**, 6, 960-964.
- Thirumala-Devi K., Mayo M.A., Reddy G., Reddy S.V., Delfosse P., Reddy D.V. (2000), Production of polyclonal antibodies against ochratoxin A and its detection in chilies by ELISA. *Journal of Agricultural and Food Chemistry*, **48**, 10, 5079-82.
- Trucksess M.W., Giler J., Young K., White K.D., Page S.W. (1999), Determination and Survey of Ochratoxin A in Wheat, Barley and Coffee. *Journal of the Association of Official Analytical Chemists International*, **82**, 1, 85-89.
- Xiao H., Clarke J., Marquardt R.R., Frohlich A.A. (1995), Improved methods for conjugating selected mycotoxins to carrier proteins and dextran for immunoassays. *Journal of Agricultural and Food Chemistry*, **43**, 2092-2097.

Received: June 27, 2005;  
Revised: December 07, 2006;  
Accepted: October 20, 2006.

PÁGINA  
EM  
BRANCO