

ERRATUM

# A composite phase conjugator based on Brillouin-enhanced four-wave mixing combining with stimulated Brillouin amplification

C.Y. ZHU, Z.W. LU AND W.M. HE

Institute of Opto-electronics, Harbin Institute of Technology, Harbin, China

(Volume 27, Number 4, 2009, pages 681–687)

Because of production problem, Figure 1b and Figure 3 lost some of the detail, and we are reprinting the correct figures below.

On page 683, right hand column, line 17 the following:

$$I_{3p} = 5\text{MW}/\text{cm}^2$$

should be corrected to:

$$I_{1p} = 5\text{MW}/\text{cm}^2$$

(e-mail: zw\_lu@sohu.com)

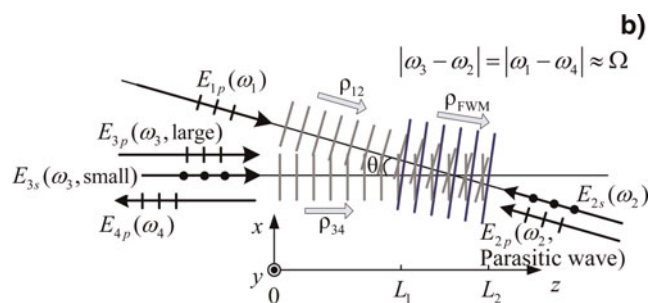


Fig. 1.

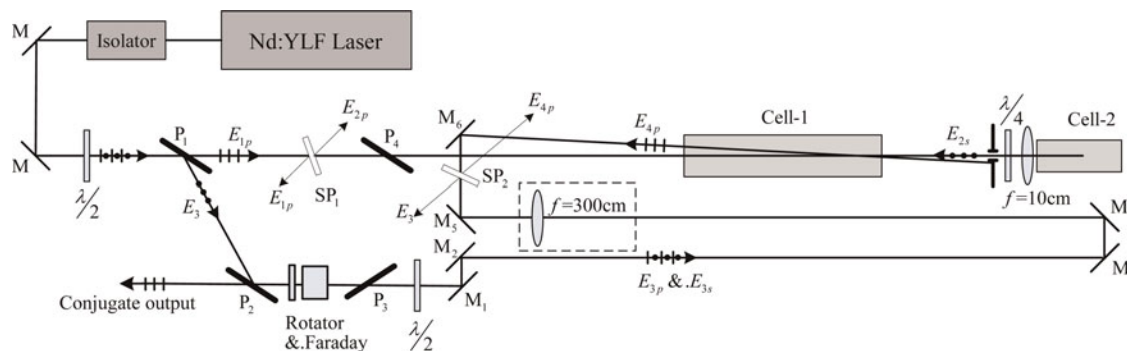


Fig. 3.