



University of Pennsylvania
ScholarlyCommons

Finance Papers

Wharton Faculty Research

2006

A Consumption-Based Model of the Term Structure of Interest Rates

Jessica A. Wachter
University of Pennsylvania

Follow this and additional works at: https://repository.upenn.edu/fnce_papers

 Part of the [Finance Commons](#), and the [Finance and Financial Management Commons](#)

Recommended Citation

Wachter, J. A. (2006). A Consumption-Based Model of the Term Structure of Interest Rates. *Journal of Financial Economics*, 79 (2), 365-399. <http://dx.doi.org/10.1016/j.jfineco.2005.02.004>

This paper is posted at ScholarlyCommons. https://repository.upenn.edu/fnce_papers/378
For more information, please contact repository@pobox.upenn.edu.

A Consumption-Based Model of the Term Structure of Interest Rates

Abstract

This paper proposes a consumption-based model that accounts for many features of the nominal term structure of interest rates. The driving force behind the model is a time-varying price of risk generated by external habit. Nominal bonds depend on past consumption growth through habit and on expected inflation. When calibrated to data on consumption, inflation, and the aggregate market, the model produces realistic means and volatilities of bond yields and accounts for the expectations puzzle. The model also captures the high equity premium and excess stock market volatility.

Disciplines

Finance | Finance and Financial Management



The Rodney L. White Center for Financial Research

*A Consumption-Based Model of the
Term Structure of Interest Rates*

Jessica A. Wachter

27-04

The Wharton School
University of Pennsylvania

A Consumption-Based Model of the Term Structure of Interest Rates ^{*}

Jessica A. Wachter[†]

University of Pennsylvania and NBER

July 9, 2004

^{*}I thank Andrew Ang, Ravi Bansal, Michael Brandt, Geert Bekaert, John Campbell, John Cochrane, Francisco Gomes, Vassil Konstantinov, Martin Lettau, Anthony Lynch, David Marshall, Lasse Pederson, Andre Perold, Ken Singleton, Christopher Telmer, Jeremy Stein, Matt Richardson, Stephen Ross, Robert Whitelaw, Yihong Xia, seminar participants at the 2004 Western Finance Association meeting in Vancouver, the 2003 Society of Economic Dynamics meeting in Paris, and the 2001 NBER Asset Pricing meeting in Los Angeles, the the NYU Macro lunch, the New York Federal Reserve, Washington University, and the Wharton School. I thank Lehman Brothers for financial support.

[†]Address: The Wharton School, University of Pennsylvania, 3620 Locust Walk, Philadelphia, PA 19104; Tel: (215) 898-7634; Email: jwachter@wharton.upenn.edu; <http://finance.wharton.upenn.edu/~jwachter/>

A Consumption-Based Model of the Term Structure of Interest Rates

Abstract

This paper proposes a consumption-based model that can account for many features of the nominal term structure of interest rates. The driving force behind the model is a time-varying price of risk generated by external habit. Nominal bonds depend on past consumption growth through habit and on expected inflation. When calibrated to data on consumption, inflation, and the average level of bond yields, the model produces realistic volatility of bond yields and can explain key aspects of the expectations puzzle documented by Campbell and Shiller (1991) and Fama and Bliss (1987). When actual consumption and inflation data are fed into the model, the model is shown to account for many of the short and long-run fluctuations in the short-term interest rate and the yield spread. At the same time, the model captures the high equity premium and excess stock market volatility.

Introduction

The expectations puzzle, documented by Campbell and Shiller (1991) and Fama and Bliss (1987), has long posed a challenge for general equilibrium models of the term structure. Backus, Gregory, and Zin (1989) show that a model assuming power utility preferences and time-varying expected consumption growth cannot account for this puzzle. Although Dai and Singleton (2002) show that a statistical model of the stochastic discount factor can fit the puzzle, this only raises the question of what economic mechanism is at work.

This paper proposes a consumption-based model that captures key aspects of the empirical results of Campbell and Shiller (1991) and Fama and Bliss (1987). Campbell and Shiller run the regression

$$y_{n,t+1}^{\$} - y_{nt}^{\$} = \text{constant} + \beta_n \frac{1}{n-1} (y_{nt}^{\$} - y_{1t}^{\$}) + \text{error},$$

where $y_{nt}^{\$} = -\frac{1}{n} \ln P_{nt}^{\$}$, and $P_{nt}^{\$}$ is the price of a nominal bond with maturity n . According to the expectations hypothesis, excess returns on bonds are unpredictable, and all the variation in yield spreads is due to variation in future short-term interest rates. In terms of the regression above, this means $\beta_n = 1$ for all n . But Campbell and Shiller show, on the contrary, that β_n is less than one and decreasing in n . The model in this paper reproduces these findings. The model also generates an upward sloping average yield curve (as found in the data) and realistic bond yield volatility.

Two ingredients enable the model to capture these findings. The first is external habit persistence from Campbell and Cochrane (1999). Habit persistence generates time variation in investor preferences. After periods of unusually low consumption growth, the volatility of investors' marginal utility rises, causing them to demand greater premia on risky assets. As a result, the risk premium on the aggregate stock market varies in a countercyclical fashion.

Habit utility preferences are clearly not enough: In the model of Campbell and Cochrane (1999), the riskfree rate is constant and the term structure is trivial. The second ingredient is thus a model for the short-term interest rate that makes long-term bonds risky in the first place. Without this ingredient, it is impossible for long-term bonds to have positive, countercyclical risk premia.

In this paper, the short-term real interest rate varies with surplus consumption, the ratio between current consumption minus a slow-moving weighted average of past consumption, and current consumption. The estimated model implies that surplus consumption and the real riskfree rate are negatively correlated; when past consumption growth is relatively low, investors borrow to give habit a chance to catch up to consumption. However, an increase in precautionary savings miti-

gates the effect, keeping the volatility of the interest rate low. The negative correlation between surplus consumption and the riskfree rate leads to positive risk premia on real bonds, and an upward sloping yield curve.

In order to speak to the empirical findings in the term structure, it is necessary to model nominal as well as real bonds. This paper assumes an exogenous affine process for the price level. The affine assumption allows for a tractable solution to the nominal bond pricing problem. Nominal bonds are influenced by expected inflation as well as by surplus consumption growth. Expected inflation is calibrated purely to match inflation data. Thus the factors driving interest rates and bond returns in this model are based in macroeconomics, rather than on asset prices.¹

Besides the empirical literature on the expectations hypothesis, this paper draws on the earlier literature on habit formation (e.g., Abel (1990), Chapman (1998), Constantinides (1990), Dybvig (1995), Ferson and Constantinides (1991), Heaton (1995), and Sundaresan (1989)). Constantinides (1990) and Sundaresan (1989) show that habit formation models can be used to explain a high equity premium with low values of risk aversion. Like these models, the model proposed here assumes that the agent evaluates today's consumption relative to a reference point that increases with past consumption. Following Campbell and Cochrane (1999), this paper departs from earlier work by assuming that habit is external to the agent, namely that the agent does not take into account future habit when deciding on today's consumption. Abel (1990) also assumes external habit formation, but in his specification, agents care about the ratio of consumption to habit, rather than the difference. As a result, risk aversion is constant and risk premia do not vary through time.² Motivated by habit formation models, Li (2001) examines the ability of past consumption growth to predict excess returns on stocks. However, Li does not look at the predictive ability of consumption for short or long-term interest rates, nor does he consider the implications for habit formation for the expectations hypothesis.

An intriguing feature of the model in this paper is the link it produces between asset returns and

¹Ang and Piazzesi (2003) also investigate the role of macroeconomic variables in the term structure. They consider an affine term structure model where output and inflation are among the factors. Evans and Marshall (2003) consider the extent to which macroeconomic shocks can explain changes in yields, where the macroeconomic shocks are inferred using restrictions from general equilibrium models.

²Lately there has been increased interest in the empirical properties of habit formation models. Dai (2000) links the Constantinides model to a model for labor income. Brandt and Wang (2003) study habit preferences over inflation. Bekaert, Engstrom, and Grenadier (2004) consider a model where the investor's reference point is imperfectly correlated with past consumption. Menzly, Santos, and Veronesi (2004) introduce a variant of the Campbell and Cochrane model to explain returns on industry portfolios. Chen and Ludvigson (2003) evaluate habit specifications using nonparametric methods.

underlying macroeconomic variables. When actual consumption and inflation data is fed through the model, the implied nominal riskfree rate has a correlation of .72 with the 3-month Treasury yield in the data. The implied spread between the five-year and three-month yield has a correlation of .40 with the yield spread in the data. This is in spite of the fact that the returns implied by the model are driven only by consumption growth and inflation. When expectations-hypothesis regressions are adjusted by implied risk premia on bonds, as proposed by Dai and Singleton (2002), the violation of the expectations hypothesis is reduced by more than half at the long end of the term structure. Finally, the model preserves the advantages of the original Campbell and Cochrane (1999) framework. It successfully captures the high equity premium for the aggregate market, excess volatility, and predictability of excess stock returns.

The outline of the paper is as follows. Section 1 describes the assumptions on the endowment, preferences, and the price level, and how the model is solved. Section 2 describes the estimation of the inflation process. Section 3 describes the calibration and the implications for the population moments of asset returns, and for the time series of asset returns in the postwar data.

1 Model

This section describes the model assumed in this paper. Section 1.1 describes the assumptions for preferences, Section 1.2 describes the assumptions on the price level. Section 1.3 describes the solution method, and Section 1.4 discusses consequences for risk premia on real and nominal bonds.

1.1 Preferences

Assume that an investor has utility over consumption relative to a reference point X_t :

$$E \sum_{t=0}^{\infty} \delta^t \frac{(C_t - X_t)^{1-\gamma} - 1}{1-\gamma}. \quad (1)$$

Habit, X_t , is defined indirectly, through surplus consumption S_t , where

$$S_t \equiv \frac{C_t - X_t}{C_t}.$$

To ensure that X_t never falls below C_t , $s_t = \ln S_t$ is modeled:

$$s_{t+1} = (1 - \phi)\bar{s} + \phi s_t + \lambda(s_t)(\Delta c_{t+1} - E(\Delta c_{t+1})), \quad (2)$$

The process for s_t is heteroscedastic, and perfectly correlated with innovations in consumption growth. The sensitivity function $\lambda(s_t)$ will be described below.

The investor's habit is *external*: the investor does not take into account the effect that today's consumption decisions have on X_t in the future.³ Because habit is external, the investor's intertemporal marginal rate of substitution is given by:

$$M_{t+1} = \delta \left(\frac{S_{t+1} C_{t+1}}{S_t C_t} \right)^{-\gamma}. \quad (3)$$

Following Campbell and Cochrane (1999), consumption is parametrized as a random walk:

$$\Delta c_{t+1} = g + v_{t+1} \quad (4)$$

where v_{t+1} is a $N(0, 1)$ shock that is independent across time. As shown in Campbell and Cochrane (1999), this specification implies that x_t is approximately a weighted average of past consumption growth, as would be expected from an external habit formation model.

From the Euler equation, it follows that the real riskfree rate equals

$$\begin{aligned} r_{f,t+1} &= \ln(1/E_t[M_{t+1}]) \\ &= -\ln \delta + \gamma g + \gamma(1 - \phi)(\bar{s} - s_t) - \frac{\gamma^2 \sigma_v^2}{2} (1 + \lambda(s_t))^2. \end{aligned} \quad (5)$$

This riskfree rate has some familiar terms from the power utility case and others that are new to habit formation. As in the power utility model, positive expected consumption growth leads investors to borrow from the future to smooth consumption. This is reflected in the term γg (however, γ is not equal to risk aversion as it is under power utility). The second term, proportional to $\bar{s} - s_t$, implies that as surplus consumption falls relative to its long-term mean, investors borrow more. This is due to the mean-reverting nature of surplus consumption: investors borrow against future periods when habit has had time to adjust and surplus consumption is higher. The last term reflects precautionary savings. A higher $\lambda(s_t)$ implies that surplus consumption, and therefore marginal utility, is more volatile. Investors increase saving, and r_f falls.

The function $\lambda(s_t)$ is chosen so that the intertemporal substitution and precautionary savings effects offset each other, and so that the model has intuitive properties of habit formation. Campbell and Cochrane choose the function so that these effects are completely offset and the riskfree rate is constant. In contrast, this paper allows the data to determine the net effect of s_t on the riskfree rate. For simplicity, $\lambda(s_t)$ is restricted so that $r_{f,t+1}$ is linear in s_t . In addition, $\lambda(s_t)$ is chosen so

³Formally, X_t can be considered as aggregate habit and the agent as evaluating consumption relative to aggregate habit. Because all agents are identical, individual consumption and habit and aggregate consumption and habit can be treated interchangeably.

that for $s_t \approx \bar{s}$, x_t is a deterministic function of past consumption. These considerations imply that

$$\lambda(s_t) = (1/\bar{S})\sqrt{1 - 2(s_t - \bar{s})} - 1 \quad (6)$$

$$\bar{S} = \sigma_v \sqrt{\frac{\gamma}{1 - \phi - b/\gamma}}. \quad (7)$$

In order that the quantity within the square root remain positive, $\lambda(s_t)$ is set to be 0 when $s_t > s_{\max}$, for

$$s_{\max} = \bar{s} + \frac{1}{2} (1 - \bar{S}^2). \quad (8)$$

s_t ventures above s_{\max} sufficiently rarely that this feature does not affect the behavior of the model. More details can be found in Appendix A.1. Substituting these equations into (5) reduces the riskfree rate equation to

$$r_{f,t+1} = \left(-\ln \delta + \gamma g - \frac{\gamma(1 - \phi) - b}{2} \right) + b(\bar{s} - s_t) \quad (9)$$

where b is a free preference parameter that will be estimated from the data, and \bar{r}_f equals the unconditional mean of $r_{f,t+1}$.

Equations (5) and (9) indicate that the parameter b has an economic interpretation. If $b > 0$, the intertemporal smoothing effect wins out, and an increase in surplus consumption s_t drives down the interest rate. If $b < 0$, the precautionary savings effect wins out. An increase in surplus consumption s_t decreases the sensitivity $\lambda(s_t)$ and drives up the interest rate. Setting $b = 0$ results in a constant real interest rate, and gives the model of Campbell and Cochrane (1999).⁴

While the functional form of $\lambda(s_t)$ is chosen to match the behavior of the riskfree rate, it has important implication for returns on risky assets. It follows from the investor's Euler equation that

$$\frac{E_t(R_{t+1} - R_{f,t+1})}{\sigma_t(R_{t+1})} = -\rho_t(M_{t+1}, R_{t+1}) \frac{\sigma_t(M_{t+1})}{E_t(M_{t+1})},$$

where R_{t+1} is the return on some risky asset. As a consequence

$$\frac{E_t(R_{t+1} - R_{f,t+1})}{\sigma_t(R_{t+1})} \approx -\rho_t(M_{t+1}, R_{t+1}) \gamma \sigma_v^2 (1 + \lambda(s_t)), \quad (10)$$

which follows from the lognormality of M_{t+1} conditional on time- t information. Because $\lambda(s_t)$ is decreasing in s_t , the ratio of the volatility of the stochastic discount factor to its mean varies

⁴Campbell and Cochrane briefly consider the case of $b \neq 0$ in the working paper version of their model, Campbell and Cochrane (1995), but examine only the real term structure, and do not discuss implications for nominal bonds, long rate regressions, or for the time series of interest rates and risk premia. These are the focus of this paper.

countercyclically. This provides a mechanism by which Sharpe ratios, and hence risk premia, vary countercyclically over time.⁵

In the model of Campbell and Cochrane (1999), the mechanism in (10) does not create time-varying risk premia on bonds for the simple reason that bond returns are constant, and equal to the riskfree rate at all maturities. In terms of (10), the Campbell and Cochrane model implies that $\rho_t(M_{t+1}, R_{t+1}) = 0$, when R_{t+1} is the return on a bond. However, the model in this paper generates a time-varying riskfree rate. Therefore $\rho_t(M_{t+1}, R_{t+1})$ is nonzero, and (10) provides a mechanism for risk premia on real bonds, as well as risk premia on stocks, to vary through time. Of course, this observation alone does not solve the expectations puzzle. The sign of bond premia, and the magnitude of time-variation will depend on the results of the parameter estimation.

1.2 Inflation

To model nominal bonds, it is necessary to introduce a process for inflation. For simplicity, we follow Boudoukh (1993) and Cox, Ingersoll, and Ross (1985), and model inflation as an exogenous process.⁶ Let Π_t denote the exogenous price level and $\pi_t = \ln \Pi_t$. It is assumed that log inflation follows the process:

$$\Delta\pi_{t+1} = \eta_0 + \eta Z_t + \sigma_\pi \epsilon_{t+1}. \quad (11)$$

Here Z_t is an $m \times 1$ vector of state variables that follow a vector-autoregressive process:

$$Z_{t+1} = \mu + \Phi Z_t + \Sigma \epsilon_{t+1}, \quad (12)$$

where Φ is an $m \times m$ matrix and μ is an $m \times 1$ vector. The correlation between inflation, Z_t and consumption can be modeled in a parsimonious way by writing the consumption growth shock v_{t+1} as

$$v_{t+1} = \sigma_c \epsilon_{t+1}$$

Here, ϵ_{t+1} is an $(m+2) \times 1$ vector of independent $N(0, 1)$, random variables, σ_c and σ_π are $1 \times (m+2)$ and Σ is $m \times (m+2)$.

This structure allows for an arbitrary number of state variables and cross-correlations. In addition, the state variables may be correlated with consumption growth or changes in the price level. Multiple lags may be accommodated by increasing the dimension of Z_t .

⁵Harvey (1989) provides direct evidence that the the risk-return tradeoff varies counter-cyclically.

⁶Since an earlier version of this paper circulated, Buraschi and Jiltsov (2003) study a related model that puts the money supply directly in the utility function. They focus on the dynamics of inflation and the inflation risk premium, rather than the link between the term structure and consumption, which is the focus here.

1.3 Model Solution

This section calculates the prices of long-term bonds and stocks. To compute prices on nominal bonds, techniques from affine bond pricing⁷ are combined with numerical methods. Introducing affine bond pricing techniques improves the efficiency of the calculation and provides insight into the workings of the model.

Bond Prices

This paper solves for prices of both real bonds (bonds whose payment is fixed in terms of units of the consumption good) and nominal bonds (bonds whose payoff is fixed in terms of units of the price level). As shown below, the assumption that expected inflation follows a multivariate autoregressive process with Gaussian errors implies that bond yields are exponential affine in expected inflation. Following Campbell and Viceira (2001), let $P_{n,t}$ denote the real price of a real bond maturing in n periods, and $P_{n,t}^{\$}$ the nominal price of a nominal bond. The real return on an n -period real bond is given by:

$$R_{n,t} = \frac{P_{n-1,t+1}}{P_{n,t}}$$

with $r_{n,t} = \ln R_{n,t}$. The nominal return on an n -period nominal bond is:

$$R_{n,t}^{\$} = \frac{P_{n-1,t+1}^{\$}}{P_{n,t}^{\$}}$$

with $r_{n,t}^{\$} = \ln R_{n,t}^{\$}$. Finally,

$$y_{n,t} = -\frac{1}{n} \ln P_{n,t}$$

and

$$y_{n,t}^{\$} = -\frac{1}{n} \ln P_{n,t}^{\$}$$

denote the real yield on the real bond and the nominal yield on the nominal bond respectively.

Bond prices are determined recursively by the investor's Euler equation. For real bonds, this translates into:

$$P_{n,t} = E_t \left[\delta \left(\frac{S_{t+1}}{S_t} \frac{C_{t+1}}{C_t} \right)^{-\gamma} P_{n-1,t+1} \right]. \quad (13)$$

⁷See Backus, Foresi, and Telmer (2001) and Sun (1992) for illustrations of this approach in discrete-time and Duffie and Kan (1996) for an illustration in continuous time. Bakshi and Chen (1996), Bekaert, Engstrom, and Grenadier (2004) and Brennan, Wang, and Xia (2003) apply this approach to the pricing of bonds and equities.

When $n = 0$, the bond is worth one unit of the consumption good. This implies the boundary condition:

$$P_{0,t} = 1.$$

For nominal bonds, the Euler equation implies that:⁸

$$P_{n,t}^{\$} = E_t \left[\delta \left(\frac{S_{t+1} C_{t+1}}{S_t C_t} \right)^{-\gamma} \frac{\Pi_t}{\Pi_{t+1}} P_{n-1,t+1}^{\$} \right] \quad (14)$$

with

$$P_{0,t}^{\$} = 1.$$

Note that $r_{f,t+1} = r_{1,t+1} = y_{1,t}$, and $r_{f,t+1}^{\$} = r_{1,t+1}^{\$} = y_{1,t}^{\$}$.

Because the distribution of future consumption and surplus consumption depends only on the state variable s_t , (13) implies that real bond prices are functions of s_t alone:

$$P_{n,t} = F_n(s_t)$$

with $F_0(s_t) = 1$, and

$$F_n(s_t) = E_t \left[\delta \left(\frac{S_{t+1} C_{t+1}}{S_t C_t} \right)^{-\gamma} F_{n-1}(s_{t+1}) \right] \quad (15)$$

$$= E_t [\exp \{ \ln \delta - \gamma g - \gamma(1 - \phi)(\bar{s} - s_t) - \gamma(\lambda(s_t) + 1)\sigma_c \epsilon_{t+1} \} F_{n-1}(s_{t+1})] \quad (16)$$

Equation (16) can be solved using numerical integration on a grid of values for s_t . For this problem, numerical integration is superior to calculating the expectation by Monte Carlo. This is because the sensitivity of asset prices to rare events makes simulation unreliable.

Equation (14) indicates that, unlike real bond prices, nominal bond prices are functions of the state variable Z_t as well as s_t . This potentially complicates the solution for nominal bond prices, because time-varying expected inflation introduces, at the least, one more state variable. Fortunately, a simply trick can be used to reduce computation time back to what it would be for

⁸The equations for nominal bond prices follow from the fact that the Euler equation must hold for real prices of nominal bonds. Therefore:

$$\frac{P_{n,t}^{\$}}{\Pi_t} = E_t \left[M_{t+1} \frac{P_{n-1,t+1}^{\$}}{\Pi_{t+1}} \right]$$

In real terms, the nominal bond maturing today is worth

$$\frac{P_{0,t}^{\$}}{\Pi_t} = \frac{1}{\Pi_t}.$$

a single state variable. Using the law of iterated expectations and conditioning on realizations of the shock $v_{t+1} = \sigma_c \varepsilon_{t+1}$, it can be shown that nominal bond prices take the form:

$$P_{n,t}^{\$} = F_n^{\$(s_t)} \exp \{A_n + B_n Z_t\}. \quad (17)$$

The functions $F_n^{\$}$ can be solved by one-dimensional numerical integration:

$$\begin{aligned} F_n^{\$(s_t)} &= E_t \left[M_{t+1} \exp \{ \xi_n \sigma_c \varepsilon_{t+1} \} F_{n-1}^{\$(s_{t+1})} \right] \\ &= E_t \left[\exp \{ \ln \delta - \gamma g - \gamma(1 - \phi)(\bar{s} - s_t) + (\xi_n - \gamma(\lambda(s_t) + 1)) \sigma_c \varepsilon_{t+1} \} F_{n-1}^{\$(s_{t+1})} \right] \end{aligned}$$

while A_n and B_n are defined recursively by:

$$A_n = A_{n-1} - \eta_0 + B_{n-1} \mu + \frac{1}{2} (B_{n-1} \Sigma - \sigma_\pi) [I - \sigma_c' (\sigma_c \sigma_c')^{-1} \sigma_c] (B_{n-1} \Sigma - \sigma_\pi)' \quad (18)$$

$$B_n = B_{n-1} \Phi - \eta \quad (19)$$

and

$$\xi_n = (B_{n-1} \Sigma - \sigma_\pi) \sigma_c' (\sigma_c \sigma_c')^{-1}. \quad (20)$$

The boundary conditions are $F_0^{\$(s_t)} = 1$, $A_0 = 0$, $B_0 = 0_{1 \times m}$. The last term in (18) follows from Jensen's inequality: because inflation is log-normally distributed, the volatility of inflation works to decrease bond yields at long maturities. These formulas can also be used to gain insight into the workings of the model, as explained in Section 1.4.

Aggregate Wealth

In this economy, the market portfolio is equivalent to aggregate wealth, and the dividend equals aggregate consumption. The price-consumption ratio and the return on the market can be calculated using methods similar to those above, with a small but important modification. Analogously to the previous section, let $P_{n,t}^e$ denote the price of an asset that pays the endowment C_{t+n} in n periods. The e superscript denotes equity. Because these assets pay no coupons, they have the same recursive pricing relation as bonds (16). Of course the prices are different, and this is because there is a different boundary condition:

$$P_{0,t}^e = C_t.$$

Unlike the case for bonds, $P_{n,t}^e$ is not simply a function of s_t . It is a function of consumption C_t as well. To avoid introducing an additional variable into the problem, the equations for equity are rewritten in terms of price-consumption ratios, rather than simply prices.

$$\frac{P_{n,t}^e}{C_t} = E_t \left[\delta \left(\frac{S_{t+1}}{S_t} \right)^{-\gamma} \left(\frac{C_{t+1}}{C_t} \right)^{1-\gamma} \frac{P_{n-1,t+1}^e}{C_{t+1}} \right]. \quad (21)$$

with boundary condition $\frac{P_{0,t}^e}{C_t} = 1$. Now the problem is analogous to that for bond pricing. The ratio of the price zero-coupon equity to aggregate consumption can be written as a function F_n^e of s_t , where

$$F_n^e(s_t) = E_t \left[\exp \{ \ln \delta + (1 - \gamma)g - \gamma(1 - \phi)(\bar{s} - s_t) + (1 - \gamma(\lambda(s_t) + 1))\sigma_c \epsilon_{t+1} \} F_{n-1}^e(s_{t+1}) \right]$$

with boundary condition $F_n^e(s_t) = 1$. This formula can be solved recursively using one-dimensional quadrature.

Finally, the price-consumption ratio of the market equals the sum of the price-consumption ratio on these zero-coupon securities:

$$\frac{P_t}{C_t} = \sum_{n=1}^{\infty} \frac{P_{n,t}^e}{C_t}. \quad (22)$$

This way of calculating the price-consumption ratio is equivalent to the more traditional fixed-point method used by Campbell and Cochrane (1999). In this endowment economy, (22) also represents the price-dividend ratio.

1.4 Implications for bond risk premia

The nominal return on the one-period nominal bond (the nominal riskfree rate) can be determined using these equations, or directly from (14):

$$\begin{aligned} r_{f,t+1}^{\$} &= -\ln \delta + \gamma g - \frac{\gamma(1 - \phi) - b}{2} + b(\bar{s} - s_t) + (\eta_0 + \eta Z_t) - \sigma_\pi \sigma'_c \gamma(\lambda(s_t) + 1) - \frac{1}{2} \sigma_\pi \sigma'_\pi \\ &= r_{f,t+1} + E_t[\Delta \pi_{t+1}] - \frac{1}{2} \sigma_\pi \sigma'_\pi - \sigma_\pi \sigma'_c \gamma(\lambda(s_t) + 1) \end{aligned} \quad (23)$$

Of interest is the risk premium on the nominal riskfree asset. Subtracting the real riskfree rate from the expected real return on the one-period nominal bond produces:

$$E_t[r_{f,t+1}^{\$} - \Delta \pi_{t+1}] - r_{f,t+1} = -\sigma_\pi \sigma'_c \gamma(\lambda(s_t) + 1) - \frac{1}{2} \sigma_\pi \sigma'_\pi$$

The term $\frac{1}{2} \sigma_\pi \sigma'_\pi$ is an adjustment for Jensen's inequality. If $\sigma_\pi \sigma_c < 0$, the one-period nominal bond has a positive risk premium relative to the one-period real bond. Intuitively, this is because $\sigma_\pi \sigma'_c < 0$ implies that inflation and consumption growth are negatively correlated. Because higher inflation lowers the return on the nominal riskfree bond, a negative correlation between inflation and consumption implies that the nominal bond pays off when investors need the money least. Therefore the one-period nominal bond carries a risk premium relative to the one-period real bond.

The formulas derived in Section 1.3 can be used to show that nominal risk premia depend only on S_t . It follows from (17) that

$$\begin{aligned} E_t[r_{n,t+1}^\$] &= E_t \left[\ln F_{n-1}^\$(s_{t+1}) - \ln F_n^\$(s_t) + A_{n-1} - A_n + B_{n-1}Z_{t+1} - B_nZ_t \right] \\ &= \text{constant} + E_t[\ln F_{n-1}^\$(s_{t+1})] - \ln F_n^\$(s_t) + (B_{n-1}\Phi + B_n)Z_t \\ &= \text{constant} + E_t[\ln F_{n-1}^\$(s_{t+1})] - \ln F_n^\$(s_t) + \eta Z_t \end{aligned}$$

Moreover,

$$r_{1,t+1}^\$ = \text{constant} + b(\bar{s} - s_t) + \eta Z_t - \sigma_\pi \sigma'_c \gamma(\lambda(s_t) + 1)$$

(recall that $r_{1,t+1}^\$ = r_{f,t+1}^\$$). Therefore nominal risk premia depend only on s_t :

$$E_t[r_{n,t+1}^\$ - r_{1,t+1}^\$] = \text{constant} + E_t[\ln F_{n-1}^\$(s_{t+1})] - \ln F_n^\$(s_t) - b(\bar{s} - s_t) + \sigma_\pi \sigma'_c \gamma(\lambda(s_t) + 1) \quad (24)$$

In general, there is no closed form expression for nominal or real bond prices with maturity greater than one period. These can be determined in some special cases, as described below.

Special cases

Suppose first that $b = 0$. Then the real riskfree rate is constant:

$$r_{f,t+1} = r_f.$$

Moreover, it follows from (14) that

$$P_{n,t} = \exp\{-nr_f\}. \quad (25)$$

(25) can be shown using induction. If $P_{n-1,t} = \exp\{-(n-1)r_f\}$, then

$$P_{n,t} = E_t[M_{t+1} \exp\{-(n-1)r_f\}] = E_t[M_{t+1}] \exp\{-(n-1)r_f\} = \exp\{-nr_f\}.$$

Moreover, risk premia are zero in this case.

Nominal bonds are a different story. As long as expected inflation varies, the nominal riskfree rate also varies. Even if $b = 0$, correlation between expected and unexpected inflation creates risk premia on nominal bonds. These risk premia vary with s_t , and it is again not possible to solve for bond prices in closed form. Suppose however that $\Sigma\sigma'_c = 0$ and $\sigma_\pi\sigma'_c = 0$. Then inflation risk is not priced, and the same reasoning as above shows that

$$P_{n,t}^\$ = \exp\{-nr_f\} \exp\{A_n + B_n Z_t\}.$$

Substituting in from (12), (18), and (19), it follows that

$$\begin{aligned} E_t[r_{n,t+1}^{\$}] &= r_f + \eta_0 + \eta Z_t - \frac{1}{2}(B_{n-1} - \sigma_\pi)(B_{n-1}\Sigma - \sigma_\pi)' \\ &= r_{f,t+1}^{\$} + \frac{1}{2}\sigma_\pi\sigma'_\pi - \frac{1}{2}(B_{n-1} - \sigma_\pi)(B_{n-1}\Sigma - \sigma_\pi)' \end{aligned}$$

Thus risk premia on nominal bonds are zero except for a constant Jensen's inequality term.

2 Estimation

The results of the previous section suggest that the process assumed for expected inflation will be an important determinant of yields and returns on nominal bonds. This section focuses on estimating this process.

A special case of the model presented in Section 1.2 is considered. I assume that expected inflation follows an AR(1) process, namely that Z_t is univariate. This is equivalent to assuming that realized inflation follows an ARMA(1,1) process. The advantage of this approach is that estimation via maximum likelihood is straightforward, and, as shown below, the resulting expected inflation series appears to capture much of the variation in realized inflation.

Model calibration requires not only the parameters of the inflation process, but also mean consumption growth, the variance of consumption growth, and the correlation between consumption and inflation. For simplicity, aggregate consumption growth is assumed to be independent and identically distributed across time. However, the literature has identified a number of reasons why *measured* consumption may exhibit temporal dependence (e.g. Christiano, Eichenbaum, and Marshall (1991), Ferson and Harvey (1992), Heaton (1993)). To account for this dependence in the estimation, we assume that inflation and consumption growth each follow an ARMA(1,1) with correlated errors. That is, I estimate

$$\Delta c_{t+1} = (1 - \psi_1)g + \psi_1\Delta c_t + \theta_1\nu_{1,t} + \nu_{1,t+1} \quad (26)$$

$$\Delta \pi_{t+1} = (1 - \psi_2)\bar{\pi} + \psi_2\Delta \pi_t + \theta_2\nu_{2,t} + \nu_{2,t+1} \quad (27)$$

where

$$\begin{bmatrix} \nu_{1,t+1} \\ \nu_{2,t+1} \end{bmatrix} \sim N \left(0, \begin{bmatrix} \sigma_1^2 & \sigma_1\sigma_2\rho \\ \sigma_1\sigma_2\rho & \sigma_2^2 \end{bmatrix} \right) \quad (28)$$

Here, ψ_1 is the auto-regressive coefficient for mean consumption growth, while, θ_1 is the moving-average coefficient. Similarly, ψ_2 is the auto-regressive coefficient of inflation, while θ_2 is inflation's moving-average coefficient. The parameter ρ represents the correlation between innovations to

consumption growth and innovations to inflation. Equations (26)–(28) imply an exact likelihood function, derived in Appendix A.3. Section 3.1 describes the mapping from the parameters assumed in this section to the parameters assumed in Section 1.2.

Equations (26)–(28) are estimated via maximum likelihood using quarterly data on inflation and consumption from 1952 to 1998. Per-capita data on consumption of non-durables and services comes from the Board of Governors of the Federal Reserve, and is available from Martin Lettau’s website. This data is inflation-adjusted. See Lettau and Ludvigson (2001) for a further description of this data. Quarterly data on the consumer price index is taken from CRSP. Table 1 shows the results of the estimation: The left column reports the parameter estimate, the right column reports the standard error. All parameters are in quarterly units, and means and standard deviations are in percentages. Mean quarterly consumption growth (g) over this period is 0.51%, while mean inflation ($\bar{\pi}$) is 0.85%. The estimates indicate that expected inflation is highly persistent, with an auto-regressive coefficient of 0.94. The correlation between innovations to consumption and innovations to inflation is -0.18.

Figure 1 plots the time series of quarterly realized inflation together with the time series of expected inflation implied by (26)–(28) and the estimates in Table 1. As described in Appendix A.3, this series is constructed recursively using past inflation data. Figure 1 shows that the expected inflation series captures many of the lower-frequency fluctuations in realized inflation. Indeed, the expected inflation series implied by this process explains 54% of the variance of realized inflation.

The next section combines the estimation results of this section with the formulas of Section 1 to determine the implications of the model for the nominal term structure.

3 Implications for Asset Returns

This section describes the implications of the model for returns on bonds and stocks. Section 3.1 describes the calibration of the parameters, and the data used to calculate moments of nominal bonds for comparison. Section 3.2 characterizes the price-dividend ratio and the yield spread on real and nominal bonds as functions of the underlying state variables s_t and expected inflation. Section 3.3 evaluates the model by simulating 100,000 quarters of returns on stocks and nominal and real bonds and compares the simulated moments implied by the model to those on stocks and nominal bonds in the data. Lastly, Section 3.4 shows the implications of the model for the time series of the short-term interest rate and the yield spread, and examines the properties of implied bond risk premia using the technique proposed by Dai and Singleton (2002).

3.1 Calibration

The processes for consumption and inflation are calibrated using the estimation of Section 2, while the preference parameters are calibrated using bond and stock returns.⁹ Clearly the parameterization in Section 1.2 is under-identified, so certain parameters must be fixed. First, note that

$$\begin{bmatrix} \sigma_c \\ \sigma_\pi \end{bmatrix} [\sigma'_c \ \sigma'_\pi] = \begin{bmatrix} \sigma_1^2 & \sigma_1\sigma_2\rho \\ \sigma_1\sigma_2\rho & \sigma_2^2 \end{bmatrix} \quad (29)$$

In order to identify σ_c and σ_π , assume that the matrix $\begin{bmatrix} \sigma_c \\ \sigma_\pi \end{bmatrix}$ is lower triangular. Then σ_c and σ_π can be found by taking the Cholesky decomposition of the right hand side of (29).

Assume $\mu = 0$ and $\eta = 1$. Then the remaining parameters can be identified as follows.

$$\eta_0 = \bar{\pi} \quad (30)$$

$$\Phi = \psi_2 \quad (31)$$

$$\Sigma = (\psi_2 + \theta_2)\sigma_\Pi. \quad (32)$$

The resulting process for inflation is identical to (27). This follows from solving for Z_t in (11) and substituting the resulting expression into (12). Under assumptions (30) – (32) (with $\mu = 0$ and $\eta_1 = 1$), it follows that

$$\Delta\pi_{t+1} - \bar{\pi} - \sigma_\pi\varepsilon_{t+1} = \psi(\Delta\pi_t - \bar{\pi} - \sigma_\pi\varepsilon_t) + (\psi_2 + \theta_2)\sigma_\pi\varepsilon_t.$$

Solving for $\Delta\pi_{t+1}$ and applying (29) produces (27).

Note that under this specification, expected inflation and realized inflation are assumed to be perfectly positively correlated. This assumption allows expected inflation to be identified from inflation data alone. As explained in Section 2, the ARMA parameters for consumption growth are set equal to zero. This is in part for simplicity and in part because these parameters capture predictability due to data construction, rather than predictability in underlying consumption growth itself.

Once consumption and inflation are determined, there remain four parameters of the investor's utility function that need to be identified. These are the discount rate δ , the utility curvature, γ , the

⁹This calibration strategy is similar to that used in Boudoukh (1993), who investigates a term structure model where investors have power utility and consumption and inflation follow a vector-autoregression with heteroscedastic errors. Boudoukh fits consumption and inflation parameters to consumption and inflation data, and preference parameters to bond returns.

persistence of habit, ϕ , and the loading of the interest rate on the negative of surplus consumption, b . The latter parameter can be given an interpretation in terms of the utility function, as it determines the trade-off between the precautionary savings and intertemporal smoothing effects of s_t on the riskfree rate.

From (9) and (23), it follows that the parameter δ has a one-to-one correspondence with the level of the riskfree rate. For this reason, δ is set so that, in population, the mean of the nominal riskfree rate matches (approximately) that in the data. Given the other parameters, and an estimate of the mean of the nominal riskfree rate in the data $\bar{r}^{\$}$, this is accomplished by setting

$$\delta = \exp \left\{ -\bar{r}^{\$} + \gamma g - \frac{\gamma(1-\phi) - b}{2} + \bar{\pi} - \sigma_{\pi} \sigma'_c \gamma (\lambda(\bar{s}) + 1) - \frac{1}{2} \sigma_{\pi} \sigma'_{\pi} \right\}$$

This implies that when the nominal riskfree rate in the model is evaluated at \bar{s} , it equals the yield on the three-month bond. Because $\lambda(s_t)$ is a non-linear function of s_t , the mean in population will not exactly equal that from the data. However, the simulation results in Section 3.3 show that the difference is small.

Because the purpose of this paper is to determine the implications for bond returns of a model that is intended to capture features of equity returns, these parameters are determined, as far as possible, by equity return data. This is possible for γ and ϕ , but b has very little impact on equity returns. Therefore, we set b so that mean yield on the nominal five-year bond in the model is equal to its mean from the data. In order to generate an upward sloping yield curve, it is necessary that $b > 0$, i.e. that the riskfree rate loads negatively on b (and that the intertemporal substitution effect dominates the substitution effect). If $b > 0$, the real riskfree rate is negatively correlated with surplus consumption. This implies bond returns will be positively correlated with surplus consumption, and thus that bond returns, both real and nominal, will have positive risk premia. Note also that the correlation between inflation and consumption is estimated to be negative. This implies that the risk premium due to inflation is positive, and further increases the premium on nominal bonds. For the numbers estimated here, however, this effect is small.

Simulation results show that the parameter ϕ determines the first-order autocorrelation of the price-dividend ratio. This also is reasonable given that P/D is a function of s_t alone. Therefore ϕ is set to equal 0.95, the first-order autocorrelation of the price-dividend ratio in the data. Finally, γ is set so that the unconditional Sharpe ratio of equity returns is equal to the Sharpe ratio in the data. The parameter value choices are summarized in Table 2.

Relative to Campbell and Cochrane (1999), the free parameter in this model is b , the loading of the interest rate on the negative of surplus consumption (the inflation parameters are determined

solely from CPI data). This parameter is fit to the average yield spread between the five-year and the three-month nominal bond. However, b has time-series implications as well as cross-sectional ones. A value of $b > 0$ implies that surplus consumption influences the real riskfree rate with a negative sign. As a brief investigation of these time series implications, the ex-post real interest rate is regressed on a surplus consumption proxy, $\sum_{j=1}^{40} \phi^j \Delta c_{t-j}$, which is approximately equal to s_t . While s_t is, in theory, influenced by surplus consumption going back to infinity, in practice, it is necessary to make a choice as to where to cut off past consumption. To capture the nature of s_t as a long-run variable, ten years is chosen as the cut-off point. The regression is therefore

$$r_{f,t+1}^{\$} - \Delta\pi_{t+1} = a_0 + a_1 \sum_{j=1}^{40} \phi^j \Delta c_{t-j} + \varepsilon_{t+1}$$

The results of this regression lend support for the choice of $b > 0$. The parameter a_1 is found to be negative and statistically significant, with a point estimate of -0.13, and a standard error, adjusted for serial correlation and heteroskedasticity, of 0.04.¹⁰ Figure 2 plots the history of average past consumption ($\sum_{j=1}^{40} \phi^j \Delta c_{t-j}$) and $r_{f,t+1}^{\$} - \Delta\pi_{t+1}$. The negative relationship between past consumption and the ex-post real riskfree rate is apparent throughout the sample period.

Calibrating the parameters as described above, and comparing returns in the model to those in the data, requires data on nominal bond yields and on equity returns. The bond data consist of monthly observations on annual zero coupon yields for three-month, six-month, one, two, five, and ten year U.S. government bonds for the years 1952 to 1998. The data, constructed using the interpolation techniques of McCulloch and Kwon (1993) and Bliss (1997), are available from the website of Gregory Duffee. Following Campbell and Viceira (2001), I use only quarterly observations to eliminate the high-frequency fluctuations that would seem difficult to explain based on a model with macro-based variables. Monthly observations on returns on a value-weighted index of stocks traded on the NYSE and AMEX are taken from CRSP. These are used to compute quarterly returns and quarterly observations on the ratio of price to annual dividends.

3.2 Characterizing the Solution

As shown in Figure 3, the price-dividend ratio increases with surplus consumption S_t . As the price-dividend ratio is often taken to be a measure of the business cycle (e.g. Lettau and Ludvigson (2001)), this confirms the intuition that S_t is a procyclical variable.

¹⁰A potential concern with this regression is the relatively high degree of persistence in the surplus consumption ratio. A Monte Carlo exercise designed to correct for this persistence yields a 5% critical value (based on a two-tailed test) of -0.092, implying that the value of -0.13 remains significant.

Figure 4 plots the yields on nominal and real bonds for maturities of three months and ten years. Expected inflation is set equal to its long-run mean. Both nominal and real yields decrease with S_t , but the long yields are more sensitive to S_t than the short yields. Thus the spread between the long and short yields is decreasing in S_t for both nominal and real yields. Figure 4 also shows that the long-term yields generally lie above the short-term yields, and that nominal yields lie above real yields. The first of these effects follow from the fact that $b > 0$, i.e. that the interest rate loads negatively on S_t , while the second effect follows primarily from the fact that expected inflation growth is positive. For values of S_t that are very high, the ten-year yield lies slightly below the 3-month yield. This arises because the risk premium is very low for these values of S_t , and is dominated by the Jensen's inequality term in (18)).

Figure 5 plots the yields on nominal bonds as functions of surplus consumption S_t and expected inflation. Expected inflation is set equal to its long-run mean of 0.85%, and varied by plus and minus two unconditional standard deviations (about 1.15%). Both long and short-term yields are increasing in expected inflation. However, the effect of expected inflation on short-term yields is greater than on long-term yields. This plot shows that two factors drive yields in the model. Expected inflation is more important at the short end of the yield curve, while surplus consumption dominates at the long end of the yield curve.

3.3 Simulation

To evaluate the predictions of the model for asset returns, 100,000 quarters of data are simulated. Prices of the claim on aggregate consumption (equity), of real, and nominal bonds are calculated numerically, using the method described in Section 1.3.

Returns on the Aggregate Market

Table 3 shows the implications of this model for equity returns. Despite the difference in the parameter b , the implications of the present model for equity returns are nearly identical to those of Campbell and Cochrane (1999). The model fits the mean and standard deviation of equity returns, even though it was calibrated only to match the ratio. Thus the model can fit the equity premium puzzle of Mehra and Prescott (1985). The persistence ϕ is chosen so that the model fits the correlation of the price-dividend ratio by construction. However, the model can also reproduce the high volatility of the price-dividend ratio, demonstrating that the model fits the volatility puzzle described by Shiller (1981). Stock returns and price-dividend ratios are highly volatile even though

the dividend process is calibrated to the extremely smooth postwar consumption data. In addition, results available from the author show that price-dividend ratios have the ability to predict excess returns on equities, just as in the data (Campbell and Shiller (1988), Fama and French (1989)), and that declines in the price-dividend ratio predict higher volatility (Black (1976), Schwert (1989), Nelson (1991)). Given that the consequences for equity returns are so similar to those of Campbell and Cochrane (1999), the sections that follow focus on the properties of bond returns. These sections demonstrate the model’s ability to explain features of the bond data.

Bond Returns

Table 4 shows the implications of the model for means and standard deviations of real and nominal bond yields. Data moments for bond yields are provided for comparison. As shown in the first row, the model-implied nominal one period yield and its standard deviation are well matched to the moments in the data. The low mean and volatility of the short-term interest rate follows from the fact that the γ required to fit the Sharpe ratio is very low, unlike in the traditional power utility model.

Table 4 also demonstrates that the average yield curve on real and nominal bonds is upward sloping. By construction, the average yield on the five-year nominal bond in the model is equal to 6.5%, the same as its mean from the data. The average yield of the 3-month bond is 5.4%, close to its data mean of 5.5%.¹¹ Note that the calibration procedure implies that these will be close but not exact. As explained above, b is set so that the mean of the five-year bond is matched exactly, given the mean of the 3-month yield. As shown in Table 2, this implies a value of b that is greater than zero (precisely, it is 0.0045). In the language of Section 1, a positive b implies that the intertemporal smoothing effect dominates the precautionary savings effect. An implication of this model is that bond term premia are increasing in maturity, a finding which Boudoukh, Richardson, Smith, and Whitelaw (1999) show has support in the data.

The link between b and the slope of the yield curve can be understood in terms of the covariance form of the investor’s Euler equation. For example, for real bonds:

$$E(R_{n,t} - R_{1,t}) = -\text{Cov}(R_{n,t} - R_{1,t}, M_t) \frac{\sigma(M_t)}{E(M_t)}, \quad (33)$$

where $R_{n,t}$ is the return on a real bond maturing in n periods and M_t is the intertemporal marginal rate of substitution. A positive b implies that the short-term interest rate covaries negatively with

¹¹Longstaff (2000) notes however that the upward slope of the yield curve in the data may be overstated because of a liquidity premium in Treasury Bill rates.

s_t . Because bond returns move in the opposite direction as the short-term interest rate, a positive b implies that bonds have a positive covariance with s_t . This means that bonds have high returns in good times and poor returns in bad. Investors demand a risk premium to hold them. Because long-term bonds have higher expected returns than if there were no risk premia, they must have higher yields.

Table 4 also shows that the model generates higher yields for nominal bonds than for real bonds at all maturities. This is mostly due to the impact of expected inflation (3.4% per annum) on nominal yields. However, nominal yields also incorporate a positive risk premium due to inflation. For example, from (23), it follows that for the 3-month yield, the premium from inflation is equal to

$$-\sigma_\pi \sigma'_c \gamma E[\lambda(s_t) + 1] = 0.085\%$$

in annual terms. Note that the premium due to inflation is positive because, as Table 1 implies, innovations to inflation and innovations to consumption growth are negatively correlated. Because bond prices are negatively correlated with inflation, nominal bonds pay off when consumption growth (and hence surplus consumption growth) is high. This contributes to the risk premium, and hence the yield, on nominal bonds. The model produces average nominal yields that are very similar to those in the data for bonds between maturities of 3 months and 5 years. The model does imply a yield for the ten-year nominal bond that is a percentage point higher than that in the data. This is in part a consequence of the two-factor nature of this model; it is possible that expanding the model to allow for multiple factors in expected inflation would alleviate this problem.¹²

Finally, Table 4 shows that the model produces reasonable values for the standard deviation of bond yields. For example, the model implies that the standard deviation for the 3-month nominal yield is 2.7%. In the data, it is 2.9%. For the 5-year yield, the standard deviation implied by the model is 2.2%, while in the data it is 2.8%. It is important to note that the model does not match the standard deviations by construction. The parameter values were constructed to fit inflation data, the mean of the yield spread between the five and one-year bond, and equity data, not the standard deviations of bond yields.

The previous discussion shows that interest rate risk leads both real and nominal bonds to have positive risk premia. Because of these positive risk premia, there is a feedback effect that further raises the risk, and therefore, the premium on bonds. As shown below, risk premia on bonds vary.

¹²Alternatively, it would be possible to calibrate b to match the ten-year yield rather than the five-year yield. The results in the paper are qualitatively unchanged.

Variation in the risk premium itself induces price fluctuations, much like “excess volatility” in the stock market. This excess volatility makes expected returns on bonds larger than they otherwise would be.

This feedback effect helps in understanding why bonds command risk premia at all. After all, these bonds pay off a fixed amount. Why is it that investors simply do not wait until maturity to sell the bond, when the return is fixed? The power utility model of Backus, Gregory, and Zin (1989) implies that bonds have negative excess returns that are very small in magnitude.¹³ In the present model, by contrast, bonds are risky because their prices fall during periods of low surplus consumption, namely during recessions. These are the times when investor’s marginal utility is the highest, and when, as a result, they most want to increase their consumption. Long-term bonds thus command a premium not only because of their dependence on the time-varying riskfree rate, but because they do badly in recessions.

Time-varying bond risk premia

The previous section pointed to time-variation in risk premia as a source of variation in long-term bond prices. This section shows that risk premia are indeed time-varying, and explains why.¹⁴

Figure 6 shows the outcome of regressions

$$y_{n-1,t+1}^{\$} - y_{nt}^{\$} = \text{constant} + \beta_n \frac{1}{n-1} (y_{nt}^{\$} - y_{1t}^{\$}) + \text{error} \quad (34)$$

in the data and in the model. These “long-rate” regressions were performed by Campbell and Shiller (1991), to test the hypothesis of constant risk premia on bonds, also known as the generalized expectations hypothesis. If risk premia are constant, β_n should be equal to one. Instead, Campbell and Shiller find a coefficient that is negative at all maturities, and significantly different from one. Moreover, the higher the maturity, the lower β_n .

Figure 6 plots the coefficients β_n when the regression (34) is run on the sample described in Section 3.1 and on simulated data from the model, as a function of maturity n .¹⁵ The lines with plus

¹³Bansal and Coleman (1996) develop a model where agents have power utility, but demand for liquidity generates an upward sloping yield curve. Boudoukh (1993) explains the upward sloping yield curve in a model where agents have power utility and inflation and consumption growth are heteroscedastic.

¹⁴Independently and concurrently with this paper, Seppala (2003) shows that a model where risk sharing is limited because of risk of default also can exhibit an upward sloping yield curve and time-varying risk premia on inflation-indexed bonds.

¹⁵The literature has identified several problems with this regression that could bias the coefficients upward or downward. Bekaert, Hodrick, and Marshall (1997) show that the bias noted in Stambaugh (1999) implies that these regressions may understating the failure of the expectations hypothesis. Bekaert and Hodrick (2001) argue that

signs indicate the coefficients from the data; as in previous studies these coefficients are negative and downward sloping as a function of maturity. The lines with circles indicate coefficients when the regression (34) is run on simulated data from the model. The resulting coefficients are below one at all maturities, showing that the expectations hypothesis does not hold in this model. The slope of the line through the coefficients is approximately equal to the slope implied by the data. Thus the model fits the pattern of the violation of the expectations hypothesis in the data.

What drives the model's ability to produce slope coefficients $\beta_n \neq 1$? The condition $\beta_n \neq 1$ is equivalent to the statement that excess returns on long-term bonds are predictable.¹⁶ It follows from the definition of yields and returns that

$$r_{n,t+1}^{\$} = y_{nt}^{\$} - (n-1) \left(y_{n-1,t+1}^{\$} - y_{nt}^{\$} \right)$$

Re-arranging, and taking expectations:

$$E_t \left[y_{n-1,t+1}^{\$} - y_{nt}^{\$} \right] = \frac{1}{n-1} \left(y_{nt}^{\$} - y_{1t}^{\$} \right) - \frac{1}{n-1} E_t \left[r_{n,t+1}^{\$} - y_{1t}^{\$} \right] \quad (35)$$

Thus the coefficient of a regression of changes in yields on the scaled yield spread produces a coefficient of one only if risk premia on bonds are constant. In this model, risk premia are not constant. During recessions, the volatility of investor's marginal utility rises, as shown in (10). In Campbell and Cochrane (1999), this mechanism produces a time-varying risk premium on the aggregate market. Here, the same mechanism produces time-varying risk premia on bonds.¹⁷

While the model succeeds in fitting the pattern of the coefficients in the data, the magnitude of the difference between the slope coefficients and one is smaller in the model than in the data. For example, on the ten-year bond, the slope coefficient is -3 in the data, but -1.25 in the model. Despite the fact that the model does not capture the magnitude of the predictability in the data, the fact that it captures the pattern separates it from other models with time-varying risk premia. Fisher (1998) estimates a two-factor model affine model with a univariate time-varying price of risk. Because the price of risk is univariate, the results of the Fisher model are comparable to the results here. Fisher finds that while the model produces slope coefficients that are smaller than one, they

standard tests tend to reject the expectations hypothesis even when it is true. They find, however, that the data remain inconsistent with the expectations hypothesis, even after adjusting for small-sample properties.

¹⁶Cochrane and Piazzesi (2002) provide direct evidence that bond returns are predictable. Moreover, they show excess returns move together; a single linear combination of forward-rates predicts excess returns on bonds at all maturities. This finding supports a feature of the habit model, namely that one variable, s_t , drives most of the time-variation in bond premia.

¹⁷Brandt and Wang (2003) show that a model where risk aversion is driven by inflation uncertainty also implies that bond risk premia are positive and time-varying.

are increasing with maturity, rather than decreasing as is found in the data. It is noteworthy that the Fisher model finds this result, even though, unlike the model explored in this paper, it is fit to term structure data alone.

It is also instructive to compare the performance of this model to a larger class of affine term structure models. Dai and Singleton (2002) study three-factor term structure models in the essentially affine class of Duffee (2002). Each model has potentially three latent variables influencing risk premia. The models are distinguished by the number of factors that exhibit time-varying volatility as in Cox, Ingersoll, and Ross (1985). Dai and Singleton find that only the completely homoscedastic model can match the downward slope of the coefficients found in the data. The model with one factor influencing volatility produces coefficient that are smaller in magnitude and upward sloping, while the models with two or three factors influencing volatility produce coefficients very close to one.¹⁸ The studies of Fisher (1998) and Dai and Singleton (2002) therefore show that time-varying risk premia are not sufficient to match the pattern and magnitude of the failure of the expectations hypothesis. This holds even in models that are fit to the term structure of interest rates and where the factors are linear combinations of bond yields, rather than driven by macro-variables as in the model in this paper.

To summarize, this section has shown that the population moments of the model are close to those in the data, both for the aggregate market, and for bond yields. In addition, when changes in yields are projected onto the scaled yield spread, the resulting coefficient is less than one at all maturities, and decreasing in the maturity. This same pattern, indicating a failure of the expectations hypothesis, is found in the data.

3.4 Implications for the Time Series

The previous section shows the implications of the model for the population values of aggregate market moments, bond yields, and Campbell and Shiller (1991) regression coefficients. This section discusses the implications of the model for the post-war time series of the interest rate, the yield spread, and risk premia on bonds.

Figure 7 plots the time series of the nominal yield on the three-month bond implied by the model

¹⁸However, using the generalized method of moments approach employed by Gibbons and Ramaswamy (1993), Brandt and Chapman (2002) show that when the parameters of the models with stochastic volatility are chosen so that the model fits the expectations hypothesis regressions, the models come closer to matching the patterns found in the data. This also occurs with the quadratic models of Ahn, Dittmar, and Gallant (2002). Bansal and Zhou (2002) study a model with regime switches, and conclude that this type of model can also explain the expectations puzzle.

(dashed lines), and the nominal 3-month yield in the data (solid lines). To construct the nominal yield implied by the model, first a time series of the state variables s_t and Z_t are constructed. s_t is constructed using (2) and data on quarterly consumption growth. Z_t , expected inflation growth, is constructed using the maximum likelihood procedure described in Appendix A.3. Note that expected inflation growth technically cannot be observed in the data. The procedure in Appendix A.3 constructs expected inflation growth given past inflation, a series that converges to Z_t as the number of data points grows.¹⁹ Note that this series is identical to that plotted in Figure 1.

Given a series s_t , and a series (proxying for) Z_t , it is possible to calculate the model's implications for nominal yields. Equation (17) shows that bond yields are an affine function of Z_t multiplied by a function $F_n^{\$}(s_t)$ that is not available in closed form.²⁰ Values for $F_n^{\$}(s_t)$ corresponding to the time series are interpolated on a grid of values for s_t . Because s_t is highly persistent, and because the parameters of the model are chosen so that the population moments of the model match the sample moments in the data, it is not the case that the *sample* mean of the riskfree rate implied by the model equals that found in the data. To better compare the series implied by the model and the series implied by the data, both series are de-meanned.

The resulting series for the three-month yield is plotted in Figure 7, along with the de-meanned series from the data. Figure 7 shows that the model captures many of the short-run and long-run fluctuations in the nominal riskfree rate. The close relation between the two series holds throughout the sample period, though it does break down somewhat in the mid-to-late 80s and the 90s. The correlation between the series implied by the model and the series in the data is .72, even though the series implied by the model is constructed using inflation and consumption data alone.

Figure 8 repeats the procedure. this time plotting the de-meanned yield spread on the five-year nominal bond over the 3-month bond implied by the model, and the same series from the data. Again, the model matches many of the short and long-run fluctuations in the nominal yield spread from the data. While this relation continues to be strong in the latter half of the sample, the model predicts a lower yield spread in the 70s than actually occurred. This is because the yield spread is highly dependent on the state variable s_t (see Figure 5), which, due to the long period of low consumption growth, is unusually low in the 70s. Nonetheless, the model is able to account for

¹⁹To establish that this series in fact converges to Z_t , note that recursion (44) is satisfied by σ_2^2 . Therefore, the expected value of π_{t+1} given data on inflation up to t converges to $\psi_2\Delta\pi_t + \theta_2\nu_{2t}$. The argument in Section 3.1 shows that this series is equal to Z_t .

²⁰For the 3-month nominal yield, (23) is an approximate closed-form expression.

the higher frequency movements in the 70s, and overall, the correlation between the yield spread implied by the model and that in the data is .40.

Dai and Singleton (2002) propose another metric by which to judge the time series implications of the model, that, at the same time, tests the ability of the model to account for the failure of the expectations hypothesis. Re-arranging (35) produces

$$E_t \left[y_{n-1,t+1}^{\$} - y_{nt}^{\$} \right] + \frac{1}{n-1} E_t \left[r_{n,t+1}^{\$} - y_{1t}^{\$} \right] = \frac{1}{n-1} \left(y_{nt}^{\$} - y_{1t}^{\$} \right).$$

This relation is a consequence of the present-value identity for yields, and thus holds in any term structure model. Based on this equation, Dai and Singleton propose running the following regression on actual data:

$$y_{n-1,t+1}^{\$} - y_{nt}^{\$} + \frac{1}{n-1} \hat{E}_t \left[r_{n,t+1}^{\$} - y_{1t}^{\$} \right] = \text{constant} + \beta_n^R \frac{1}{n-1} (y_{nt}^{\$} - y_{1t}^{\$}) + \text{error}, \quad (36)$$

where $\hat{E}_t \left[r_{n,t+1}^{\$} - y_{1t}^{\$} \right]$ is the risk premium on nominal bond yields implied by the model. If adding implied risk premia to the left hand side leads brings β_n closer to one, then the model helps to resolve the expectations puzzle.

This model diagnostic differs from the one performed in the previous section (summarized in Equation 34) in a number of respects. The regression (34) is run using simulated data and the results are compared to the results when (36) is run using actual data. In contrast, it does not make sense to run (36) on simulated data, because by definition, $\beta_n = 1$ in population. Instead, (36) is run using the actual time series of data for bond yields $y_{n-1,t+1}^{\$}$, $y_{nt}^{\$}$ and $y_{1t}^{\$}$. For the models considered by Dai and Singleton (2002) and the model in this paper, conditional risk premium $\hat{E}_t \left[r_{n,t+1}^{\$} - y_{1t}^{\$} \right]$ on the n -period nominal bond is a function of the state variables at time t . This function of the state variables is scaled by $1/(n-1)$ and added to the change in yield on the left hand side. Thus the diagnostic demonstrates the degree to which variation in the implied risk premium matches variation in the actual risk premium in the time series.

For the model in this paper, risk premia are not available in closed form. Nonetheless, they can be easily computed using (24), derived in Section 1.4. This computation is simplified by the fact that, for (36), it is only necessary to know risk premia up to a (maturity-dependent) constant. Moreover, as shown in Section 1.4, risk premia are only functions of surplus consumption, not of expected inflation. To obtain the time series of risk premia for use in (36), a series for surplus consumption using actual consumption data is produced from (2), and then values for (24) are interpolated.

Figure 9 plots the coefficients β_n^R from the regression (36), along with the coefficients β_n from (34) found in the data. As described above, the coefficients from the data are negative and decreasing with maturity. However, the risk-adjusted coefficients, β_n^R are increasing with maturity, and always higher than β_n . Therefore, $\hat{E}_t \left[r_{n,t+1}^{\$} - y_{1t}^{\$} \right]$ computed based on surplus consumption, helps to capture some of the time variation in risk premia. Not surprisingly the model cannot capture all of the time-variation, as $\hat{E}_t \left[r_{n,t+1}^{\$} - y_{1t}^{\$} \right]$ is calculated based on a single factor, derived from aggregate consumption rather than from prices. However, for long-term yields, the model can explain a substantial fraction of the deviation from the expectations hypothesis. For the 5-year bond, the difference between the adjusted coefficient and 1 is 60% of the difference between the unadjusted coefficient and 1. For the 10-year bond, it is 35% of the difference.

To summarize, this section has shown that the model captures features of the time series of short and long-term interest rates. This was shown in two ways. First, the series of the implied 3-month nominal yield in the model, and the series of the implied spread on the 5-year yield over the 3-month yield were compared to those in the data. The correlation between the data and the model was .72 in the case of the short-term yield, and .40 in the case of the yield spread. Time series plots show that the model captures many of the short and long-term fluctuations in the data. Second, when regressions of yield changes on the yield spread are adjusted by the time series of bond risk premia implied by the model, as proposed by Dai and Singleton (2002), the projection coefficients come substantially closer to what would be found if the expectations hypothesis were to hold.

4 Conclusion

This paper offers a theory of the nominal term structure based on the preferences of a representative agent. By generalizing a model already known to fit stylized facts about the aggregate stock market, that of Campbell and Cochrane (1999), this paper is able to parsimoniously model both bond and stock returns. This paper departs from the model of Campbell and Cochrane by exploring the implications of allowing surplus consumption to affect the riskfree rate, and by introducing a process for inflation. The first extension is accomplished by introducing a preference parameter that represents a tradeoff between the intertemporal substitution effect and the precautionary savings effect.

In this model, the new preference parameter is set to match the average yield on the nominal five-year bond. As argued in the paper, positive risk premia on real bonds (and risk premia on nominal

bonds that are large enough to match those in the data) imply that the intertemporal substitution effect dominates the precautionary savings effect. The remaining preference parameters are set exactly as in Campbell and Cochrane (1999), to match the average riskfree rate, the Sharpe ratio on equity returns, and the autocorrelation of the price-dividend ratio. Nominal bonds are also strongly influenced by the process for expected inflation. Here, expected inflation is calibrated using inflation data alone. Thus term structure data is used to pin down only the average 3-month bond return and the average 5-year bond return in the model. The other parameters of the model are pinned down using equity returns and macro data. While the mean yield curve is partly determined by construction, the volatility of yields is not. Nevertheless, the implied volatility of yields is close to the sample estimates of nominal yield volatility in the data.

A second question is whether the model offers a realistic account of changes in yields in the post-war data. In general this is not a challenge for term structure models as the latent variables in these models are linear combinations of prices. However, in this model, the latent factors are based on consumption and inflation. Nonetheless, the implied three-month and five-year nominal yields in the model are shown to capture many of the short and long-term fluctuations of their counterparts in the data. In particular, the implied short-term interest rate has a correlation of .72 with the nominal short-term interest rate in the data. This suggests that surplus consumption, which, along with expected inflation drives changes in yields in the model, is a determinant of yields in the data.

In addition, the model offers a partial explanation for the failure of the expectations hypothesis. Dai and Singleton (2002) suggest two metrics for judging whether a dynamic term structure model is able to replicate the expectations puzzle. The first test is whether, in population, the regression coefficient from Campbell and Shiller (1991) long-rate regressions matches that from the data. The expectations hypothesis implies that these regression coefficients should be unity; in the data they are negative and decreasing in maturity. The model reproduces these findings. The second test is whether, when the Campbell-Shiller regressions are adjusted by risk premia on bonds implied by the model, the slope coefficients are closer to unity. If the model correctly captures all the time variation in bond risk premia, the risk-adjusted slope coefficients should be one. When the coefficients are adjusted by the risk premia implied by the model in the paper, they move substantially closer to one.

In summary, the model is able to capture many of the properties of moments of bond returns in the data, and explain much of the time series variation in short and long-term bond yields.

Thus the model has the potential to unify stock and bond pricing, and to connect them both to underlying macroeconomic behavior.

Appendix A

A.1 Deriving the sensitivity function $\lambda(s_t)$

The sensitivity function $\lambda(s_t)$ is specified to produce a real riskfree rate that is linear in s_t . Setting the equation for the real riskfree rate (5) equal to the linear expression (9) produces the following general form for λ :

$$\lambda(s_t) = \frac{\sqrt{2}}{\gamma\sigma_v} (-\ln \delta + \gamma g + \gamma(1 - \phi)(\bar{s} - s_t) - b(s_t - \bar{s}) - \bar{r}_f)^{\frac{1}{2}} - 1. \quad (37)$$

Campbell and Cochrane (1999) further impose the conditions

$$\lambda(\bar{s}) = \frac{1}{\bar{S}} - 1 \quad (38)$$

$$\lambda'(\bar{s}) = -\frac{1}{\bar{S}} \quad (39)$$

They show that these conditions are equivalent to requiring that for $s_t \approx \bar{s}$, x_t is approximately a deterministic function of past consumption. Equations (37) - (39) lead to the expressions for \bar{r}_f and \bar{S} that are given in the text.

A.2 Nominal Bond Pricing

The equations for nominal bond prices are derived using induction. Assume that (17) holds for the bond with $n - 1$ periods to maturity. From the Euler equation, it follows that

$$\begin{aligned} P_{n,t}^{\$} &= E_t \left[M_{t+1} \frac{\Pi_t}{\Pi_{t+1}} \exp \{ A_{n-1} + B_{n-1} Z_{t+1} \} F_{n-1}^{\$}(s_{t+1}) \right] \\ &= \exp \{ A_{n-1} - \eta_0 + B_{n-1} \mu + (B_{n-1} \Phi - \eta) Z_t \} \times \\ &\quad E_t \left[M_{t+1} F_{n-1}^{\$}(s_{t+1}) E[e^{(B_{n-1} \Sigma - \sigma_{\pi}) \epsilon_{t+1}} | \sigma_c \epsilon_{t+1}] \right] \end{aligned}$$

The second equality follows from the law of iterated expectations. By the properties of the multivariate normal distribution,

$$(B_{n-1} \Sigma - \sigma_{\pi}) \epsilon_{t+1} | \sigma_c \epsilon_{t+1} \sim N(\xi_n \sigma_c \epsilon_{t+1}, (B_{n-1} \Sigma - \sigma_{\pi})(I - \sigma_c(\sigma_c \sigma_c')^{-1} \sigma_c)(B_{n-1} \Sigma - \sigma_{\pi})').$$

where ξ_n is defined as in (20). Therefore

$$P_{n,t}^{\$} = \exp \{ A_{n-1} - \eta_0 + B_{n-1} \mu + (B_{n-1} \Phi - \eta) Z_t \} E_t \left[M_{t+1} e^{\xi_n \sigma_c \epsilon_{t+1}} F_{n-1}^{\$}(s_{t+1}) \right]$$

Therefore (17) is satisfied with

$$\begin{aligned}
A_n &= A_{n-1} - \eta_0 + B_{n-1}\mu + \frac{1}{2}(B_{n-1}\Sigma - \sigma_\pi) [I - \sigma'_c(\sigma_c\sigma'_c)^{-1}\sigma_c] (B_{n-1}\Sigma - \sigma_\pi)' \\
B_n &= B_{n-1}\Phi - \eta \\
F_n^{\mathbb{S}}(s_t) &= E_t \left[M_{t+1} e^{\xi_n \sigma_c \epsilon_{t+1}} F_{n-1}^{\mathbb{S}}(s_{t+1}) \right].
\end{aligned}$$

A.3 Likelihood Function

This section derives the likelihood function estimated in Section 2. Let $h_t = [\Delta c_t \ \Delta \pi_t]'$ and

$$\begin{aligned}
\Psi &= \begin{bmatrix} \psi_1 & 0 \\ 0 & \psi_2 \end{bmatrix} \\
\Theta &= \begin{bmatrix} \theta_1 & 0 \\ 0 & \theta_2 \end{bmatrix}.
\end{aligned}$$

Then

$$h_{t+1} = (I - \Psi)\bar{h} + \Psi h_t + \Theta \nu_t + \nu_{t+1} \quad (40)$$

where

$$\nu_t = \begin{bmatrix} \nu_{1t} \\ \nu_{2t} \end{bmatrix} \sim N(0, \Sigma_\nu)$$

and ν_t is independent of ν_{t-1}, \dots, ν_0 and h_{t-1}, \dots, h_0 . The following proposition describes the likelihood function for the process in (40), conditional on observables:

Proposition A.1

$$h_{t+1} | h_t, \dots, h_0 \sim N(\hat{h}_t, \hat{\Sigma}_t) \quad (41)$$

where

$$\hat{h}_t = (I - \Psi)\bar{h} + \Psi h_t + \Theta \Sigma_\nu \hat{\Sigma}_{t-1}^{-1} (h_t - \hat{h}_{t-1}) \quad (42)$$

$$\hat{h}_0 = \bar{h} \quad (43)$$

and

$$\hat{\Sigma}_t = \Sigma_\nu + \Theta \Sigma_\nu \Theta' - \Theta \Sigma_\nu \hat{\Sigma}_{t-1}^{-1} \Sigma_\nu \Theta' \quad (44)$$

$$(\hat{\Sigma}_0)_{i,j} = \frac{(\theta_i \theta_j + \psi_i \theta_j + \psi_j \theta_i + 1)(\Sigma_\nu)_{i,j}}{1 - \psi_i \psi_j} \quad (45)$$

PROOF: The proof is by induction. Equation (43) follows from taking unconditional expectations of (40):

$$\hat{h}_0 = (I - \Psi)\bar{h} + \Psi \hat{h}_0.$$

Subtracting $\Psi \hat{h}_0$ from both sides and inverting $I - \Psi$ shows that $\hat{h}_0 = \bar{h}$. Note that

$$\text{Cov}(h_t, \nu_t) = E(y_t \nu_t) = EE_{t-1}(h_t \nu_t) = EE_{t-1}(\nu_t \nu_t) = E[\Sigma_\nu] = \Sigma_\nu. \quad (46)$$

Taking the unconditional variance of (40) produces

$$\hat{\Sigma}_0 = \Psi \hat{\Sigma}_0 \Psi' + \Theta \Sigma_\nu \Theta' + \Psi \Sigma_\nu \Theta' + \Theta \Sigma_\nu \Psi' + \Sigma_\nu$$

In the case of diagonal Ψ , this can be inverted element-by-element to produce (45).

Now assume by induction that

$$h_t | h_{t-1}, \dots, h_0 \sim N(\hat{h}_{t-1}, \hat{\Sigma}_{t-1}) \quad (47)$$

It follows from (46) that

$$\begin{bmatrix} h_t \\ \epsilon_t \end{bmatrix} | h_{t-1}, \dots, y_0 \sim N \left(\begin{bmatrix} \hat{h}_{t-1} \\ 0 \end{bmatrix}, \begin{bmatrix} \hat{\Sigma}_{t-1} & \Sigma_\nu \\ \Sigma_\epsilon & \Sigma_\nu \end{bmatrix} \right)$$

By the properties of the normal distribution

$$\nu_t | y_t, y_{t-1}, \dots, y_0 \sim N \left(\Sigma_\nu \hat{\Sigma}_{t-1}^{-1} (y_t - \hat{h}_{t-1}), \Sigma_\nu - \Sigma_\nu \hat{\Sigma}_{t-1}^{-1} \Sigma_\nu' \right)$$

It follows, therefore, from (40) that h_{t+1} is conditionally normally distributed, and that

$$\begin{aligned} E[h_{t+1} | h_t, \dots, h_0] &= (I - \Psi)g + \Psi h_t + \Theta \Sigma_\nu \hat{\Sigma}_{t-1}^{-1} (h_t - \hat{h}_{t-1}) \\ \text{Var}[h_{t+1} | h_t, \dots, h_0] &= \Theta \Sigma_\nu \Theta' - \Theta \Sigma_\nu \hat{\Sigma}_{t-1}^{-1} \Sigma_\nu' \Theta' + \Sigma_\nu \end{aligned}$$

□

References

- Abel, Andrew, 1990, Asset prices under habit formation and catching up with the Joneses, *American Economic Review Papers and Proceedings* 80, 38–42.
- Ahn, Dong-Hyun, Robert F. Dittmar, and A. Ronald Gallant, 2002, Quadratic term structure models: Theory and evidence, *Review of Financial Studies* 15, 243–288.
- Ang, Andrew, and Monika Piazzesi, 2003, A no-arbitrage vector autoregression of term structure dynamics with macroeconomic and latent variables, *Journal of Monetary Economics* 50, 745–787.
- Backus, David, Silverio Foresi, and Chris Telmer, 2001, Affine term structure models and the forward premium anomaly, *Journal of Finance* 65, 279–304.
- Backus, David, A. Gregory, and Stanley Zin, 1989, Risk premiums in the term structure: Evidence from artificial economies, *Journal of Monetary Economics* 24, 371–399.
- Bakshi, and Chen, 1996, Inflation, asset prices, and the term structure of interest rates in a monetary economy, *Review of Financial Studies* 9, 241–275.
- Bansal, Ravi, and Wilber John Coleman II, 1996, A monetary explanation of the equity premium, term premium, and risk-free rate puzzles, *Journal of Political Economy* 104, 1135–1171.
- Bansal, Ravi, and Hao Zhou, 2002, Term structure of interest rates with regime shifts, *Journal of Finance* 57, 1997–2044.
- Bekaert, Geert, Eric Engstrom, and Steve Grenadier, 2004, Stock and bond returns with moody investors, Working paper, Columbia University, Stanford University, and University of Michigan.
- Bekaert, Geert, and Robert J. Hodrick, 2001, Expectations hypothesis tests, *Journal of Finance* 56, 1357–1394.
- Bekaert, Geert, Robert J. Hodrick, and David A. Marshall, 1997, On biases in tests of the expectations hypothesis of the term structure of interest rates, *Journal of Financial Economics* 44, 309–348.
- Black, Fischer, 1976, Studies of stock price volatility changes, in *Proceedings of the Business and Economic Statistics Section, American Statistical Association* (American Statistical Association, Washington).

- Bliss, Robert R., 1997, Testing term structure estimation methods, *Advances in Futures and Options Research* 9, 197–231.
- Boudoukh, Jacob, 1993, An equilibrium model of nominal bond prices with inflation-output correlation and stochastic volatility, *Journal of Money, Credit, and Banking* 25, 636–665.
- Boudoukh, Jacob, Matthew Richardson, Tom Smith, and Robert F. Whitelaw, 1999, Ex ante bond returns and the liquidity preference hypothesis, *Journal of Finance* 54, 1153–1167.
- Brandt, Michael W., and David A. Chapman, 2002, Comparing multifactor models of the term structure, Manuscript, University of Texas and Duke University.
- Brandt, Michael W., and Kevin Q. Wang, 2003, Time-varying risk aversion and unexpected inflation, *Journal of Monetary Economics* 50, 1457–1498.
- Brennan, Michael J., Ashley W. Wang, and Yihong Xia, 2003, Estimation and test of a simple model of intertemporal asset pricing, forthcoming, *Journal of Finance*.
- Buraschi, Andrea, and Alexei Jiltsov, 2003, Term structures of interest rates in a monetary economy with habit formation, Working Paper, London Business School.
- Campbell, John Y., and John H. Cochrane, 1995, By force of habit: A consumption-based explanation of aggregate stock market behavior, NBER Working Paper No. 4995.
- Campbell, John Y., and John H. Cochrane, 1999, By force of habit: A consumption-based explanation of aggregate stock market behavior, *Journal of Political Economy* 107, 205–251.
- Campbell, John Y., and Robert J. Shiller, 1988, The dividend-price ratio and expectations of future dividends and discount factors, *Review of Financial Studies* 58, 495–514.
- Campbell, John Y., and Robert J. Shiller, 1991, Yield spreads and interest rate movements: A bird's eye view, *Review of Economic Studies* 58, 495–514.
- Campbell, John Y., and Luis Viceira, 2001, Who should buy long-term bonds?, *American Economic Review* 91, 99–127.
- Chapman, David A., 1998, Habit formation and aggregate consumption, *Econometrica* 66, 1223–1230.

- Chen, Xiaohong, and Sydney C. Ludvigson, 2003, Land of addicts? An empirical investigation of habit-based asset pricing models, Working Paper, New York University.
- Christiano, Lawrence J., Martin Eichenbaum, and David Marshall, 1991, The permanent income hypothesis revisited, *Econometrica* 59, 397–423.
- Cochrane, John, and Monika Piazzesi, 2002, Bond Risk Premia, Working paper #9178, NBER.
- Constantinides, George M., 1990, Habit formation: A resolution of the equity premium puzzle, *Journal of Political Economy* 98, 519–543.
- Cox, John C., Jonathan C. Ingersoll, and Stephen A. Ross, 1985, A theory of the term structure of interest rates, *Econometrica* 53, 385–408.
- Dai, Qiang, 2000, From equity premium puzzle to expectations puzzle: A general equilibrium production economy with stochastic habit formation, Working Paper, New York University.
- Dai, Qiang, and Kenneth Singleton, 2002, Expectations puzzles, time-varying risk premia, and affine models of the term structure, *Journal of Financial Economics* 63, 415–442.
- Duffee, Gregory R., 2002, Term premia and interest rate forecasts in affine models, *Journal of Finance* 57, 369–443.
- Duffie, Darrell, and Rui Kan, 1996, A yield-factor model of interest rates, *Mathematical Finance* 6, 379–406.
- Dybvig, Philip H., 1995, Dusenberry’s ratcheting of consumption: Optimal dynamic consumption and investment given intolerance for any decline in standard of living, *Review of Economic Studies* 62, 287–313.
- Evans, Charles L., and David A. Marshall, 2003, Economic determinants of the nominal Treasury yield curve, Working Paper, Federal Reserve Bank of Chicago.
- Fama, Eugene F., and Robert R. Bliss, 1987, The information in long-maturity forward-rates, *American Economic Review* 77, 680–692.
- Fama, Eugene F., and Kenneth R. French, 1989, Business conditions and expected returns on stocks and bonds, *Journal of Financial Economics* 29, 23–49.

- Ferson, Wayne E., and George M. Constantinides, 1991, Habit persistence and durability in aggregate consumption: Empirical tests, *Journal of Financial Economics* 29, 199–240.
- Ferson, Wayne E., and Campbell R. Harvey, 1992, Seasonality and consumption-based asset pricing, *Journal of Finance* 47, 511–552.
- Fisher, Mark, 1998, A simple model of the failure of the expectations hypothesis, Working paper, Federal Reserve Bank of Atlanta.
- Gibbons, Michael R., and Krishna Ramaswamy, 1993, A test of the Cox, Ingersoll, Ross model of the term structure, *Review of Financial Studies* 6, 619–658.
- Harvey, Campbell, 1989, Time-varying conditional covariances in tests of asset pricing models, *Journal of Financial Economics* 24, 289–317.
- Heaton, John C., 1993, The interaction between time-nonseparable preferences and time aggregation, *Econometrica* 61, 353–385.
- Heaton, John C., 1995, An empirical investigation of asset pricing with temporally dependent preference specifications, *Econometrica* 63.
- Lettau, Martin, and Sydney Ludvigson, 2001, Consumption, aggregate wealth and expected stock returns, *Journal of Finance* 56, 815–850.
- Li, Yuming, 2001, Expected returns and habit persistence, *Review of Financial Studies* 14, 861–899.
- Longstaff, Francis A., 2000, The term structure of very short-term rates: New evidence for the expectations hypothesis, *Journal of Financial Economics* 58, 397–415.
- McCulloch, Huston J., and Heon-Chul Kwon, 1993, U.S. term structure data, 1947–1991, Working paper 93-6, Ohio State University.
- Mehra, Rajnish, and Edward Prescott, 1985, The equity premium puzzle, *Journal of Monetary Economics* 15, 145–161.
- Menzly, Lior, Tano Santos, and Pietro Veronesi, 2004, Understanding Predictability, *Journal of Political Economy* 112, 1–47.
- Nelson, Daniel B., 1991, Conditional heteroskedasticity in asset returns: A new approach, *Econometrica* 59, 347–370.

- Schwert, William G., 1989, Why does stock market volatility change over time?, *Journal of Finance* 44, 1115–1153.
- Seppala, Juha, 2003, The term structure of real interest rates: Theory and evidence from UK index-linked bonds, Working Paper, Department of Economics, University of Illinois.
- Shiller, Robert J., 1981, Do stock prices move too much to be justified by subsequent changes in dividends?, *American Economic Review* 71, 421–436.
- Stambaugh, Robert, 1999, Predictive regressions, *Journal of Financial Economics* 54, 375–421.
- Sun, Tong-Sheng, 1992, Real and nominal interest rates: A discrete-time model and its continuous-time limit, *Review of Financial Studies* 5, 581–611.
- Sundaresan, Suresh M., 1989, Intertemporally dependent preferences and the volatility of consumption and wealth, *Review of Financial Studies* 2, 73–88.

Table 1: Parameter Estimates

Estimates of the model:

$$\begin{aligned}\Delta c_{t+1} &= (1 - \psi_1)g + \psi_1\Delta c_t + \theta_1\nu_{1,t} + \nu_{1,t+1} \\ \Delta\pi_{t+1} &= (1 - \psi_2)\bar{\pi} + \psi_2\Delta\pi_t + \theta_2\nu_{2,t} + \nu_{2,t+1}\end{aligned}$$

using maximum likelihood and quarterly data on log consumption growth (Δc), and log inflation ($\Delta\pi$). Estimates are in natural units, except where otherwise indicated.

Parameter	Estimate	Standard Error
Mean cons. growth g , %	0.507	0.065
Mean infl. $\bar{\pi}$, %	0.854	0.271
AR term for cons. ψ_1	0.693	0.120
AR term for infl. ψ_2	0.945	0.022
MA term for cons. θ_1	-0.390	0.151
MA term for infl. θ_2	-0.608	0.059
Stand. dev. for cons. σ_1 , %	0.453	0.025
Stand. dev. for infl. σ_2 , %	0.564	0.031
Correlation ρ	-0.175	0.075

Table 2: Utility Parameters

Assumptions on the parameters of the investor's utility function. The first panel gives the independent parameters. The second panel gives the derived parameters. In particular, δ is determined so that, at $s = \bar{s}$, the nominal riskfree rate equals the riskfree rate in the data. $\bar{s} = \log(\bar{S})$ is determined by (7) and s_{\max} by (8).

Parameters	Value
Utility Curvature γ	1.48
Coefficient on $-s_t$ in the riskfree rate b	0.0045
Habit persistence ϕ	0.95
Derived Parameters	
Discount rate δ	0.95
Long-run mean of log surplus consumption \bar{s}	-3.62
Maximum value of log surplus consumption s_{\max}	-3.12

Table 3: Statistics for the Aggregate Market

Statistics for the aggregate market and the riskfree rate from actual and simulated quarterly data. The mean and standard deviation of returns are in annualized percentages. The Sharpe ratio is the first row divided by the second. The mean and standard deviation of the equity premium are annualized (i.e. multiplied by four and two respectively). * denotes a moment matched by construction.

Statistic	Model	Data
$E(r^m - r^f),\%$	6.52	6.22
$\sigma(r^m - r^f),\%$	16.60	15.79
Sharpe*	0.39	0.39
$E(P/D)$	16.48	30.21
$\sigma(p - d)$	0.26	0.26
$\text{Corr}(p - d)^*$	0.95	0.95

Table 4: Moments of Bond Yields

Means and standard deviations of continuously compounded nominal bond yields in the model and in the data. Yields are in annual percentages. Maturity is in quarters. Parameters are set so that the mean of the five-year nominal bond matches that in the data, and that, at $s_t = \bar{s}$, the yield on the three-month nominal bond equals its average from the data.

Maturity	Mean			Stand. Dev.		
	Real	Nominal	Data	Real	Nominal	Data
1	1.94	5.38	5.47	0.98	2.69	2.91
2	1.98	5.43	5.71	1.00	2.64	2.96
4	2.06	5.54	5.92	1.04	2.56	2.95
8	2.22	5.76	6.15	1.12	2.43	2.90
20	2.81	6.49	6.46	1.41	2.28	2.82
40	4.15	7.98	6.66	2.00	2.53	2.77

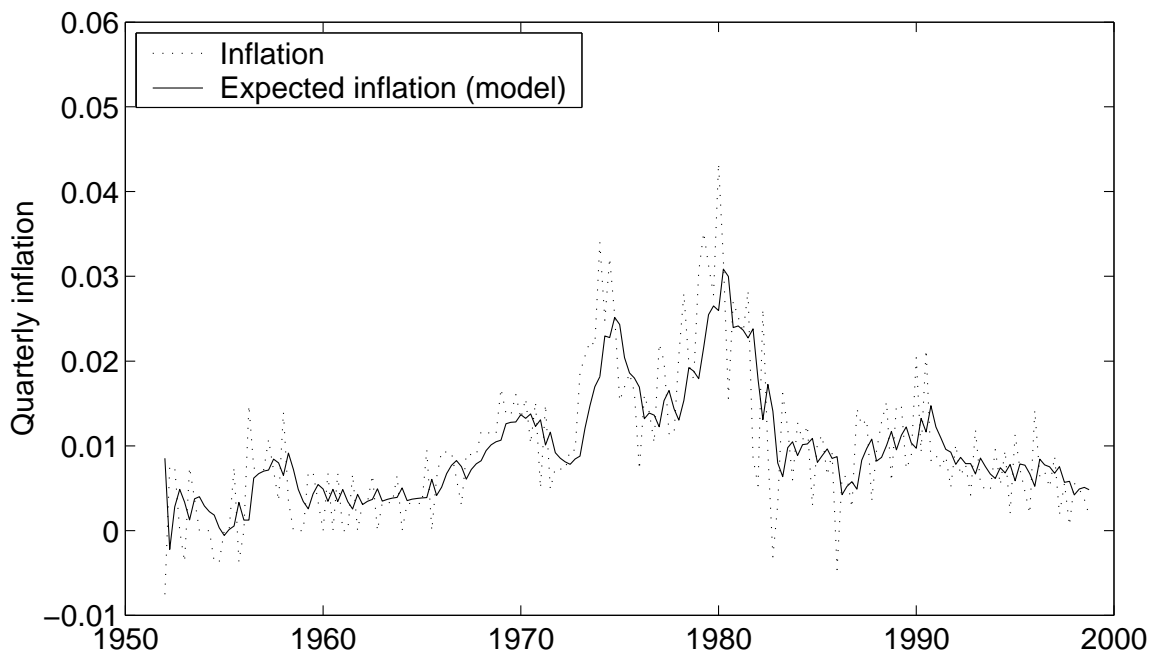


Figure 1: Expected and Realized Inflation. The dotted line plots quarterly changes in log CPI. The solid line plots expected inflation, conditional on past realized inflation, implied by the estimation of Section 2 and the maximum likelihood estimates given in Table 1.

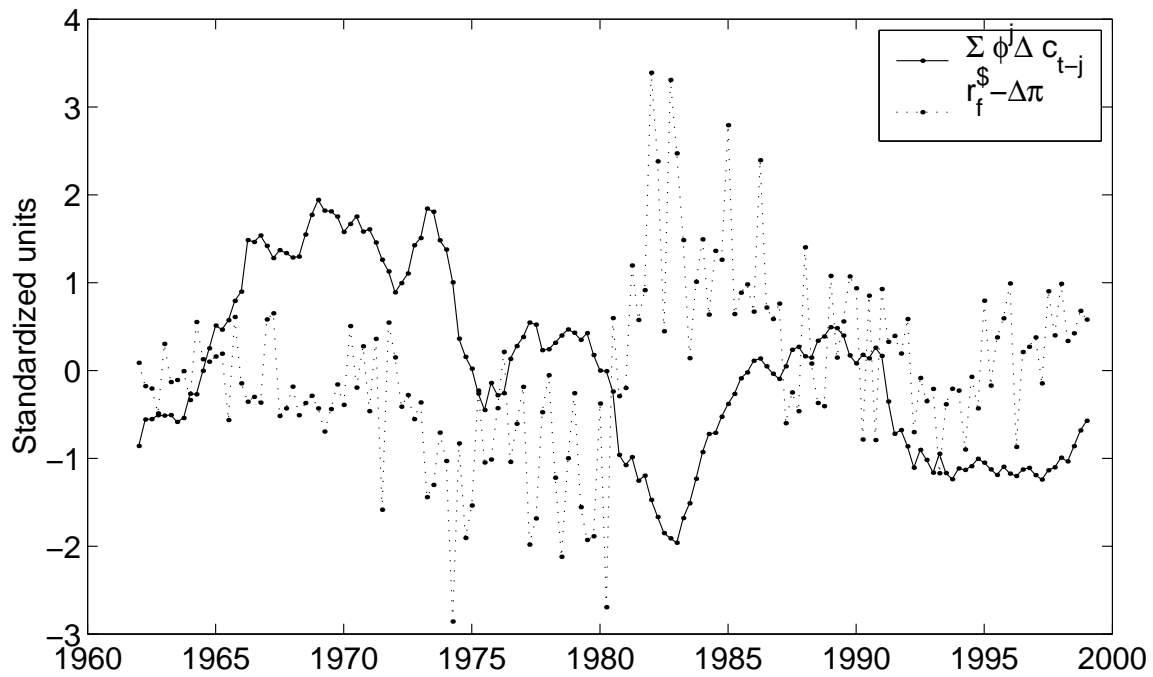


Figure 2: Past Consumption Growth and Interest Rate. This figure plots the history of average past (inflation-adjusted) consumption growth $\sum_{j=0}^{40} \phi^j \Delta c_{t-j}$ and the continuously compounded rate of return on the 90-day Treasury bill, adjusted for inflation. The parameter $\phi = 0.95$. Variables are de-meanded and standardized.

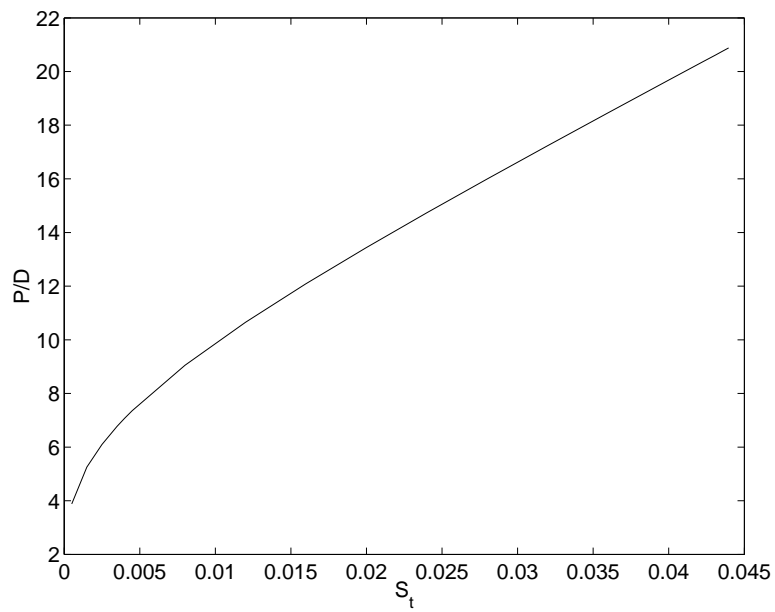


Figure 3: The Price-Dividend Ratio as a Function of Surplus Consumption S_t . The price-dividend ratio is the ratio of aggregate wealth to aggregate consumption (divided by four to annualize).

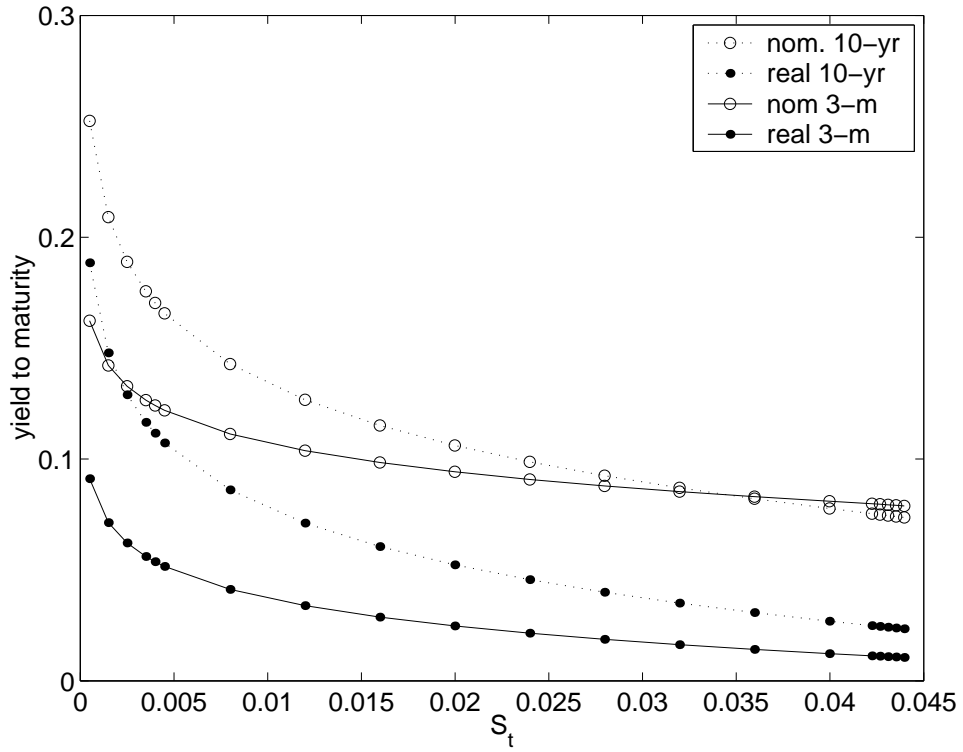


Figure 4: Continuously compounded yields on real and nominal bonds as a function of surplus consumption. Dotted lines denote yields on ten-year nominal and real bonds; solid lines denote yields on three-month nominal and real bonds. Open circles denote nominal bonds; closed circles denote real bonds. For the nominal yields, expected inflation is set equal to its unconditional mean of 1% per quarter. Yields are in annual terms.

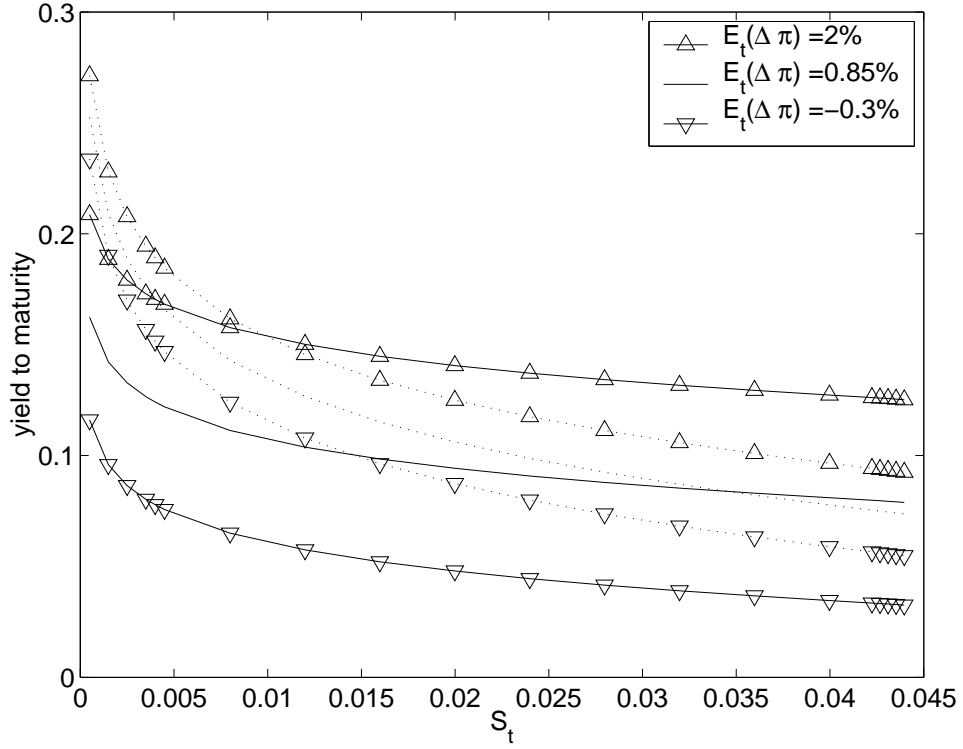


Figure 5: Nominal continuously compounded bond yields as a function of surplus consumption and expected inflation. Solid lines denote the 3-month yield, dotted lines the 10-year yield. Yields are plotted for expected inflation at its unconditional mean, at two unconditional standard deviations below the unconditional mean (upside-down triangles), and at two unconditional standard deviations above the unconditional mean (upright triangles). Yields are in annual terms. The unconditional standard deviation is calculated as $\Sigma\Sigma'/(1 - \Phi^2)$.

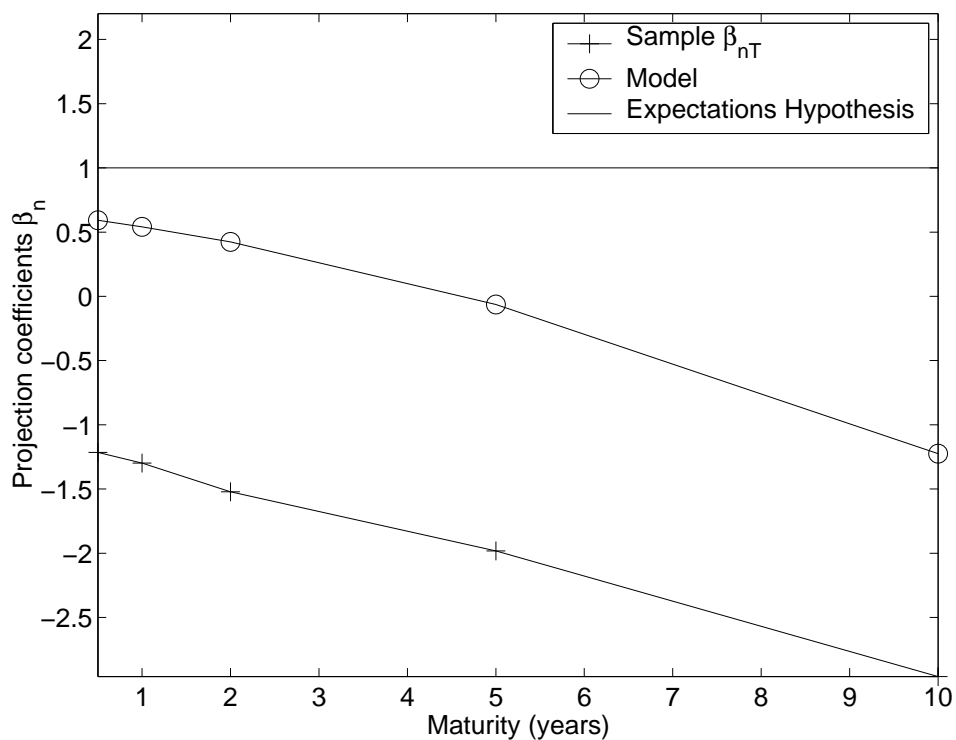


Figure 6: Long-Rate Regressions. Coefficients β_n from the regression

$$y_{n-1,t+1}^{\$} - y_{tn}^{\$} = \alpha_n + \beta_n \frac{1}{n-1} (y_{nt}^{\$} - y_{1t}^{\$}) + \text{error}$$

using simulated (circles) and actual data on bond yields. The solid line denotes the coefficients were the expectations hypothesis to hold.

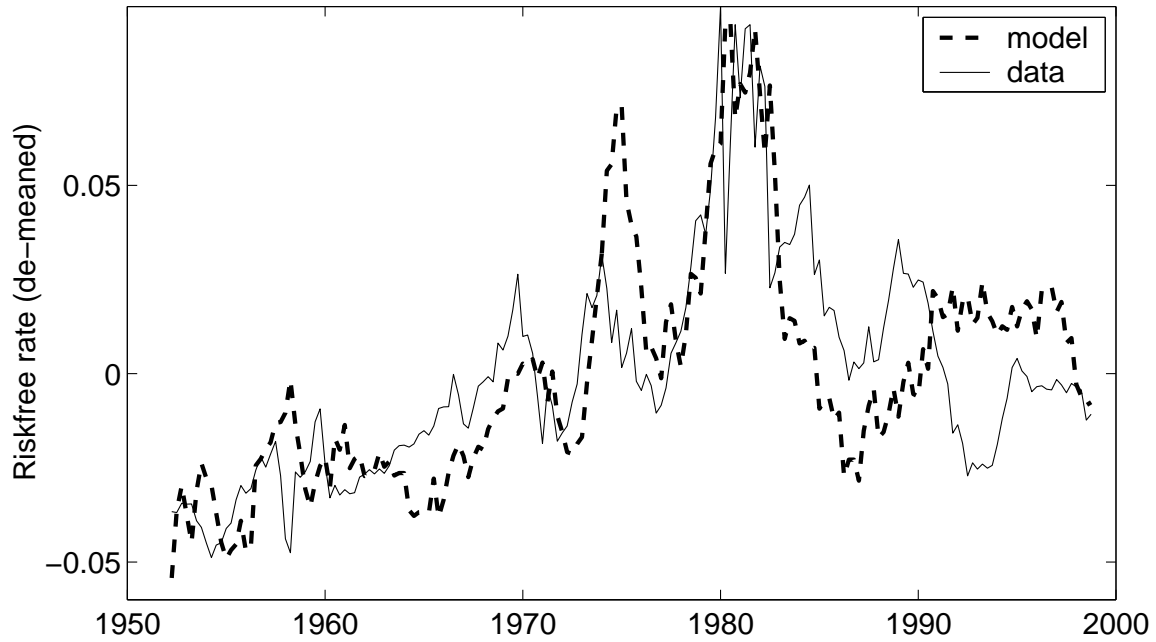


Figure 7: Time series of the 3-month yield in the data and predicted by the model. The solid line plots the time series of the nominal 3-month yield in quarterly data. The dashed line plots the implied time series when quarterly data on consumption and the price level is fed into the model. Expected inflation is taken to be its mean conditional on past inflation data, given the maximum likelihood estimates in Table 1. Using (2), surplus consumption is generated from actual consumption. Both series are de-measured.

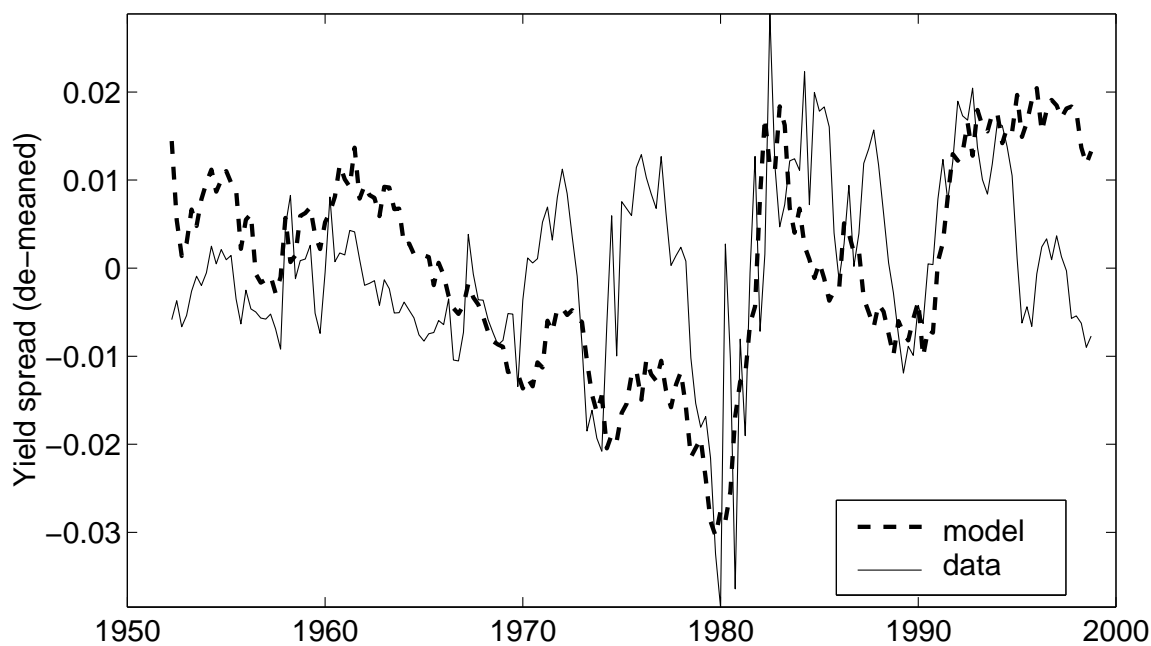


Figure 8: Time series of the yield spread on the five-year bond in the data and predicted by the model. The yield spread is the difference in yields on the five-year nominal bond and the three-month bond. The solid line plots the time series of the yield spread on between bonds in the data. The dashed line plots the implied time series when quarterly data on consumption and the price level is fed into the model. Expected inflation is taken to be its mean conditional on past inflation data, given the maximum likelihood estimates in Table 1. Using (2), surplus consumption is generated from actual consumption. Both series are de-meaned.

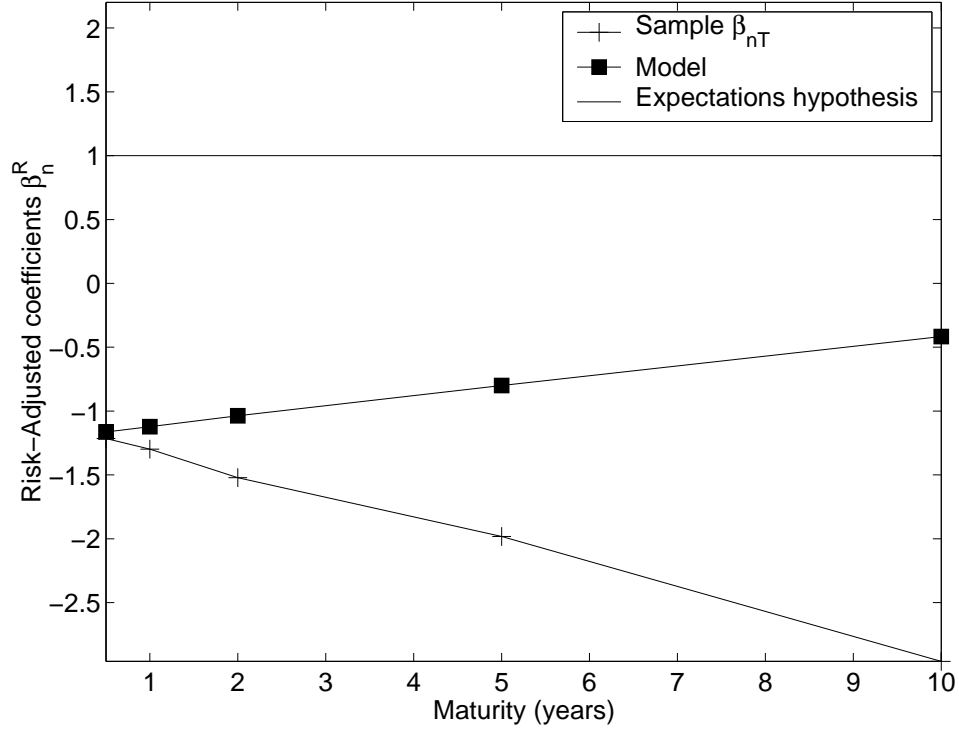


Figure 9: Adjusted long-Rate Regressions. Lines with plus signs represent coefficients β from the regression

$$y_{n-1,t+1}^{\$} - y_{nt}^{\$} = \alpha_n + \beta_n \frac{1}{n-1} (y_{nt}^{\$} - y_{1,t}^{\$}) + \text{error}$$

using quarterly data on nominal bond yields. Lines with squares represent coefficients from the regression

$$y_{n-1,t+1}^{\$} - y_{nt}^{\$} + \frac{1}{n-1} \hat{E}_t [r_{n,t+1}^{\$} - y_{1t}^{\$}] = \alpha_n^R + \beta_n^R \frac{1}{n-1} (y_{nt}^{\$} - y_{1t}^{\$}) + \text{error}$$

where $\hat{E}_t [r_{n,t+1}^{\$} - y_{1t}^{\$}]$ is the premium on the bond with maturity n implied by the model, given the level of surplus consumption and expected inflation.

The Rodney L. White Center for Financial Research

The Wharton School
University of Pennsylvania
3254 Steinberg Hall-Dietrich Hall
3620 Locust Walk
Philadelphia, PA 19104-6367

(215) 898-7616

(215) 573-8084 Fax

<http://finance.wharton.upenn.edu/~rlwctr>

The Rodney L. White Center for Financial Research is one of the oldest financial research centers in the country. It was founded in 1969 through a grant from Oppenheimer & Company in honor of its late partner, Rodney L. White. The Center receives support from its endowment and from annual contributions from its Members.

The Center sponsors a wide range of financial research. It publishes a working paper series and a reprint series. It holds an annual seminar, which for the last several years has focused on household financial decision making.

The Members of the Center gain the opportunity to participate in innovative research to break new ground in the field of finance. Through their membership, they also gain access to the Wharton School's faculty and enjoy other special benefits.

Members of the Center

2004 – 2005

Directing Members

**Geewax, Terker & Company
Goldman, Sachs & Co.
Hirtle, Callaghan & Co.
Morgan Stanley
Merrill Lynch
The Nasdaq Educational Foundation
The New York Stock Exchange, Inc.**

Members

**Aronson + Johnson + Ortiz, LP
Twin Capital**

Founding Members

**Ford Motor Company Fund
Merrill Lynch, Pierce, Fenner & Smith, Inc.
Oppenheimer & Company
Philadelphia National Bank
Salomon Brothers
Weiss, Peck and Greer**