 Open access • Journal Article • DOI:10.1175/1520-0426(2001)018<0446:ACMFTM>2.0.CO;2

## A Correction Method for Turbulence Measurements with a 3D Acoustic Doppler Velocity Profiler — [Source link](#)

David Hurther, Ulrich Lemmin

**Institutions:** École Polytechnique Fédérale de Lausanne

**Published on:** 01 Mar 2001 - Journal of Atmospheric and Oceanic Technology (American Meteorological Society)

**Topics:** Turbulence kinetic energy, K-epsilon turbulence model, Turbulence and Noise (radio)

Related papers:

- [Despiking Acoustic Doppler Velocimeter Data](#)
- [Evaluation of the Acoustic Doppler Velocimeter \(ADV\) for Turbulence Measurements](#)
- [Means of Noise Reduction in Acoustic Turbulence Measurements](#)
- [Acoustic Velocity Profiler for Laboratory and Field Studies](#)
- [Turbulence in open-channel flows](#)

Share this paper:    

View more about this paper here: <https://typeset.io/papers/a-correction-method-for-turbulence-measurements-with-a-3d-2z0ksjexam>



# A correction method for turbulence measurements with a 3D acoustic Doppler velocity profiler

David Hurther, Ulrich Lemmin

## ► To cite this version:

David Hurther, Ulrich Lemmin. A correction method for turbulence measurements with a 3D acoustic Doppler velocity profiler. *Journal of Atmospheric and Oceanic Technology*, American Meteorological Society, 2001, 18 (3), pp.446-458. 10.1175/1520-0426(2001)0182.0.CO;2 . hal-00230322

**HAL Id: hal-00230322**

**<https://hal.archives-ouvertes.fr/hal-00230322>**

Submitted on 10 Feb 2020

**HAL** is a multi-disciplinary open access archive for the deposit and dissemination of scientific research documents, whether they are published or not. The documents may come from teaching and research institutions in France or abroad, or from public or private research centers.

L'archive ouverte pluridisciplinaire **HAL**, est destinée au dépôt et à la diffusion de documents scientifiques de niveau recherche, publiés ou non, émanant des établissements d'enseignement et de recherche français ou étrangers, des laboratoires publics ou privés.



Distributed under a Creative Commons Attribution| 4.0 International License

# A Correction Method for Turbulence Measurements with a 3D Acoustic Doppler Velocity Profiler

D. HURTHUR AND U. LEMMIN

*Laboratoire de Recherches Hydrauliques, École Polytechnique Fédérale de Lausanne, Lausanne, Switzerland*

## ABSTRACT

A method is proposed to reduce the noise contribution to mean turbulence parameters obtained by 3D acoustic Doppler velocity profiler measurements. It is based on a noise spectrum reconstruction from cross-spectra evaluations of two independent and simultaneous measurements of the same vertical velocity component over the whole water depth. The noise spectra and the noise variances are calculated and removed for the three fluctuating velocity components measured in turbulent, open-channel flow. The corrected turbulence spectra show a  $-5/3$  slope over the whole inertial subrange delimited by the frequency band of the device, while the uncorrected turbulence spectra have flat high-frequency regions typical for noise effects. This method does not require any hypothesis on the flow characteristics nor does it depend on device-dependent parameters. The corrected profiles of turbulence intensities, turbulent kinetic energy, shear stress, and turbulent energy balance equation terms, such as production, transport, and dissipation, are in better agreement with different semitheoretical formulas and other measurements from the literature than those from the uncorrected data. Combined with the use of a phase array emitter, the proposed correction method allows measurements with a relative error under 10% in the outer flow region. The corrected inner flow region measurements are still affected by errors that may originate from spatial averaging effects within the sample volume due to the high local velocity gradient or the lack of validity of the universal laws concerning turbulence quantities over a rough bed.

## 1. Introduction

Over the past decades, high-resolution multistatic ultrasonic velocity profilers working with coherent demodulation of the backscattered Doppler phase have been of increasing interest in the fields of fluid dynamics, physical oceanography, and, more recently, sediment transport and river hydrodynamics. They have shown their advantage particularly in field applications where the presence of particulate matter often does not allow measurements by other techniques.

In all turbulent flows the precision and the identification of noise sources are of great importance. In this respect, the mean flow can be treated separately from the turbulent component. When classical hydraulic mean flow characteristics are estimated from high-resolution sonar data, the precision of the measurements is typically better than 4% (Rolland 1994; Lemmin and Rolland 1997) confirming their high reliability. The remaining error is mainly due to the precision of positioning the sensors.

Noise effects are of particular importance if turbulence

measurements are evaluated because they are directly based on the fluctuating quasi-instantaneous velocity field estimation. In that case several mechanisms inherent to the measurement technique may reduce the precision. Several authors, Garbini et al. (1982), Lhermitte and Lemmin (1994), Voulgaris and Trowbridge (1998), have worked on the theoretical and experimental identification of the noise sources affecting the turbulence measurements with ultrasonic Doppler velocity profilers.

These undesired physical processes can be classified as follows: 1) the Doppler ambiguity process that is characterized by the amplitude modulation of the backscattered signal related to the transit time of the acoustical targets through the measurement volume. 2) The spatial averaging of the instantaneous velocity field (a large number of targets are present instantaneously), which is taken over the sample volume weighted by the directivity function of the emitter. 3) The effect of the mean flow shear stress present within the sample volume. 4) The phase distortion effect of the emitted front wave. 5) The effect of those turbulent scales that are of the same order of magnitude or smaller than the sample volume's transverse size. 6) The electronic circuitry's sampling errors linked to the A/D conversion. Except for the spatial averaging process (process 2), all other noise sources enter as additional variance terms in the measured fluctuating velocities variances and therefore are statistically inde-

---

*Corresponding author address:* Ulrich Lemmin, LRH-DGC, École Polytechnique Fédérale de Lausanne, CH-1015 Lausanne, Switzerland.  
E-mail: ulrich.lemmin@epfl.ch

pendent. Due to the geometrical configuration of the sensors these noise variances have different values dependent on which component (longitudinal, vertical, or transverse) is measured. This relates to different weighting factors for the total noise variance common to all components, as will be shown later.

Correction methods for the mean turbulence measurements expressed as additional variances broadly fall into two different categories, described in the next two subsections.

#### *a. Indirect correction method*

This method is most frequently used (Lhermitte and Lemmin 1994; Zedel et al. 1996). The different noise variance terms are estimated as a function of the sample volume's distance from the sensors (processes 1, 3, 4, 5 above). They are added together to form the total noise variance, and a factor is applied to each component to remove the corresponding term from the measured variance. Three main disadvantages can be identified:

- The evaluation of the different noise variances is based on assumptions about specific flow conditions. Variance 3 is calculated by assuming the logarithmic distribution of the mean longitudinal velocity profile. Variance 5 requires the knowledge of the turbulence dissipation rate (Cabrera et al. 1987), computed from expressions valid for isotropic turbulence.
- The transverse size of the sample volume has to be known (Voulgaris and Trowbridge 1998) to calculate variances 1, 4, and 5. It can either be estimated from acoustical beam approximations or be measured directly (Lhermitte and Lemmin 1994). The noise term related to process 6 also has to be evaluated from additional measurements (Zedel et al. 1996) because an expression for the phase resolution uncertainty cannot be established.
- No direct correction of the turbulence power spectral density is possible even if the noise variances are evaluated correctly.

#### *b. Correction method based on two point cross correlation*

This method, proposed by Garbini et al. (1982) assumes that the noise signals (variances 1, 3, 4, and 5) between two points in the velocity profile are uncorrelated. It should be noted that Garbini et al. (1982) used a monostatic acoustic Doppler velocity profiler (ADVP), where one transducer serves as emitter and receiver. In that case the cross correlation has to be applied to two spatially separated volumes in the velocity profile to ensure that the noise processes are uncorrelated.

The advantage is that it can directly be applied to measured data and does not require any prediction as does the indirect correction method. The disadvantage is that the target population in the two sample volumes,

to which the cross correlation is applied, has to be different to ensure the decorrelation. The existence of overlapping regions between two consecutive volumes in the profiles, which have to be inclined with respect to the flow direction, limits the decorrelation of the noise part. The method is applied to two volumes separated by one measuring volume, which decreases the noise but in turn also attenuates the desired velocity signal. Our experience has shown that this method cannot be used with multistatic Doppler systems.

In the present paper, a correction method is presented to reduce the effects of variances 1, 3, 4, 5, and 6. The main contribution to noise reduction presented here concerns a direct treatment of the data similar the one proposed by Garbini et al. (1982). The essential difference is that it can be used with a multistatic 3D-ADVP sensor configuration. We will discuss the efficiency of the method as a function of the flow depth in boundary layer applications such as open-channel flow where the improvement can be compared against the existing universal laws.

## **2. Description of the 3D-ADVP**

#### *a. General principle*

The 3D-ADVP is composed of the 1-MHz focused phase array emitter (TRA), discussed in Hurther and Lemmin (1998), which is installed vertically in the center. This is an ultrasonic constant beamwidth transducer system, which is capable of generating an extended focal zone by electronically focusing the beam over the desired water depth range. The sample volume has a constant width ( $\sim 7$  mm from  $-6$  dB acoustic beam measurements) over a range of 60 cm. Due to this configuration, the effects of process 2 and variance 4 cited in the introduction can be significantly reduced.

Four 1-MHz large angle receivers are placed symmetrically around the emitter (Fig. 1a). They are used to obtain the velocity components in the tilted directions, TRB, TRC, TRD, and TRE. For the data analysis, the system is divided into two independently working multistatic subsystems (each multistatic system is composed of two bistatic configurations). The first subsystem is oriented in the longitudinal plane (TRA, TRB, TRC) of the flow, and measures the vertical and longitudinal instantaneous velocity profiles over the whole water depth. The second one is oriented in the transverse direction (TRA, TRD, TRE) of the flow, and allows the vertical and transverse instantaneous velocity profiles to be measured simultaneously with the longitudinal plane.

Five sinusoidal sound pulses of identical duration are emitted by the elements of the focused transducer at a fixed pulse repetition frequency (PRF). PRF is chosen to cover the investigated water column and also to ensure a high temporal resolution. Between two pulses, TRB, TRC, TRD, and TRE receive the sound scattered from the same volume in the beam generated by TRA. All signals are simultaneously digitized and gated into  $M$  consecutive

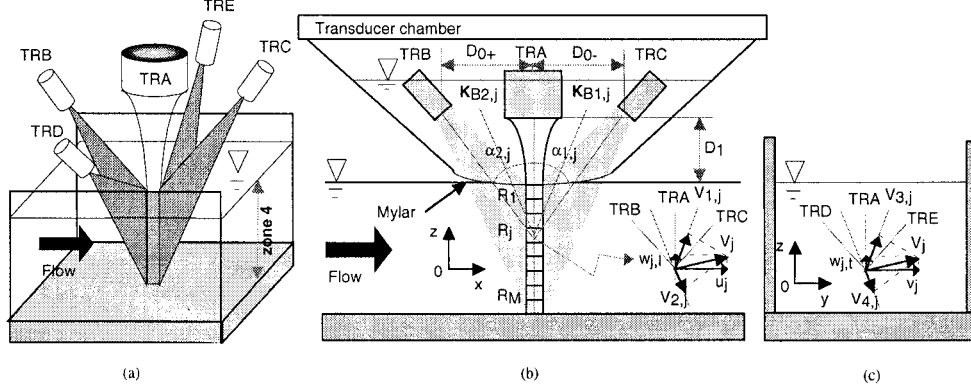


FIG. 1. (a) 3D acoustic Doppler velocity profiler configuration for open-channel flow application. TRA represents the phase array emitter, TRB, TRC, TRD, and TRE are the four large angle receivers arranged to compose two independently, simultaneously measuring tristatic subsystems in the longitudinal and transverse flow sections. (b) Schematic diagram showing the longitudinal subsystem and its velocity vector decomposition. (c) Velocity vector decomposition for the transverse subsystem.

sample volumes to provide, after processing, two quasi-instantaneous local velocity profiles in the two planes and over the whole insonified water depth.

The 3D velocity vector components are shown in Figs. 1b and 1c. The Doppler frequency corresponding to each sample volume  $R_j$  ( $j = 1, \dots, M$ ) is calculated using the pulse-pair algorithm (Lemmin and Rolland 1997). For each of the two multistatic subsystems, the two local Doppler frequencies ( $f_{d1,j}$  and  $f_{d2,j}$  for the longitudinal system,  $f_{d3,j}$  and  $f_{d4,j}$  for the transverse system) are:

$$\begin{aligned} f_{d1,j} &= \frac{2f_0}{c} \cos(\alpha_{1,j}/2) V_{1,j} & f_{d3,j} &= \frac{2f_0}{c} \cos(\alpha_{3,j}/2) V_{3,j} \\ f_{d2,j} &= \frac{2f_0}{c} \cos(\alpha_{2,j}/2) V_{2,j} & f_{d4,j} &= \frac{2f_0}{c} \cos(\alpha_{4,j}/2) V_{4,j} \end{aligned} \quad (1)$$

where  $V_{i,j}$  are the projections of the local instantaneous velocity  $\mathbf{V}_j$  on the Bragg wavenumber vectors  $\mathbf{K}_{Bi,j}$  with  $i = 1, \dots, 4$  and  $j = 1, \dots, M$ . From these Doppler frequencies we can determine the longitudinal, transverse, and two vertical components of the quasi-instantaneous velocity vector over the whole insonified water column as

$$\begin{aligned} u_j &= \frac{c}{2f_0 \sin \alpha_{1,j}} [f_{d1,j} - f_{d2,j}] \\ v_j &= \frac{c}{2f_0 \sin \alpha_{3,j}} [f_{d3,j} - f_{d4,j}] \\ w_{j,t} &= \frac{c}{2f_0(1 + \cos \alpha_{3,j})} [f_{d3,j} + f_{d4,j}] \\ w_{j,l} &= \frac{c}{2f_0(1 + \cos \alpha_{1,j})} [f_{d1,j} + f_{d2,j}], \end{aligned} \quad (2)$$

where subscript  $l$  denotes the longitudinal tristatic sub-

system and  $t$  the transverse one. Here  $f_0$  is the emitted sound wave frequency and  $c$  the speed of sound for our water condition. It is noted that two independent estimates of the vertical velocity are obtained simultaneously with this system.

The temporal resolution is fixed by PRF and by the number  $N_{pp}$  of consecutive samples needed to estimate a quasi-instantaneous velocity by the pulse-pair algorithm. The corresponding Nyquist frequency is  $\text{PRF}/(2N_{pp})$  [in our case equal to  $666.67/(2 \times 16) \approx 20.84$  Hz].

#### b. Expression of mean turbulence characteristics in terms of geometrical configuration and noise

The measured mean turbulent characteristics that can be expressed as a function of the bistatic configuration (subscript  $i$ ) and as a function of the measurement position (subscript  $j$ ) can be written as the sum of the true quantity and the noise contribution. The measured fluctuations of the radial velocities can be composed as

$$\langle V'_{ij} \rangle(t) = \langle \tilde{V}'_{ij} \rangle(t) + \langle n_{ij} \rangle(t). \quad (3)$$

All terms are quasi-instantaneous quantities. The fluctuating quantities are noted by a prime. Here  $\langle \rangle$  indicates spatial averaging weighted by the transducer's directivity function. The tilde denotes the true flow quantities. The term  $n_{ij}(t)$  is the instantaneous noise signal for component  $i$  at location  $j$ .

As suggested by Lohrmann et al. (1995), the following assumptions are made concerning the noise signal:

- the noise signal has a flat power spectral density over the investigated frequency band  $\text{PRF}/(2N_{pp})$  (white noise)
- it is unbiased
- it is statistically independent of the velocity fluctuations

- it is uncorrelated between the different radial components  $i$ .

The validity of these assumptions will be demonstrated as part of the verification of the method.

### 1) VARIANCES

The variance of the radial velocity components is given by

$$\overline{\langle V'_{i,j} \rangle} = \overline{\langle \tilde{V}'_{i,j} \rangle} + \langle \sigma_{i,j}^2 \rangle, \quad (4)$$

where the second term of the right member of Eq. (4) is the variance of the noise signal. The velocity variances can then be written as

$$\begin{aligned} \overline{\langle u_j'^2 \rangle} &= \frac{1}{4 \sin^2(\alpha_j/2)} (\overline{\langle V'_{1,j} \rangle} + \overline{\langle V'_{2,j} \rangle} - 2\overline{\langle V'_{1,j} \rangle \langle V'_{2,j} \rangle}) \\ &= \overline{\langle \tilde{u}_j'^2 \rangle} + \frac{1}{2 \sin^2(\alpha_j/2)} \langle \sigma_j^2 \rangle \\ \overline{\langle v_j'^2 \rangle} &= \frac{1}{4 \sin^2(\alpha_j/2)} (\overline{\langle V'_{3,j} \rangle} + \overline{\langle V'_{4,j} \rangle} - 2\overline{\langle V'_{3,j} \rangle \langle V'_{4,j} \rangle}) \\ &= \overline{\langle \tilde{v}_j'^2 \rangle} + \frac{1}{2 \sin^2(\alpha_j/2)} \langle \sigma_j^2 \rangle \\ \overline{\langle w_{j,i}'^2 \rangle} &= \frac{1}{4 \cos^2(\alpha_j/2)} (\overline{\langle V'_{1,j} \rangle} + \overline{\langle V'_{2,j} \rangle} - 2\overline{\langle V'_{1,j} \rangle \langle V'_{2,j} \rangle}) \\ &= \overline{\langle \tilde{w}_{j,i}'^2 \rangle} + \frac{1}{2 \cos^2(\alpha_j/2)} \langle \sigma_j^2 \rangle \end{aligned}$$

to obtain

$$\begin{aligned} \overline{\langle u_j'^2 \rangle} &= \overline{\langle \tilde{u}_j'^2 \rangle} + a_j \langle \sigma_j^2 \rangle & \overline{\langle v_j'^2 \rangle} &= \overline{\langle \tilde{v}_j'^2 \rangle} + a_j \langle \sigma_j^2 \rangle \\ \overline{\langle w_{j,i}'^2 \rangle} &= \overline{\langle \tilde{w}_{j,i}'^2 \rangle} + b_j \langle \sigma_j^2 \rangle, \end{aligned} \quad (5)$$

assuming that  $\alpha_{1,j} = \alpha_{2,j} = \alpha_{3,j} = \alpha_{4,j} = \alpha_j$  and  $\langle \sigma_{i,j}^2 \rangle = \langle \sigma_j^2 \rangle$ . This implies that the receiver transducers are identical and ideal. This hypothesis will be verified in section 5a. The coefficients  $a_j$  and  $b_j$  are related to the geometrical configuration of the 3D-ADVP (Fig. 1; Table 1).

In Table 1, the variables  $d_j$  and  $\alpha_j$  represent the distances of the measurement point  $j$  from the emitter and the Doppler angle at measurement point  $j$ , respectively. The horizontal velocity components are much more affected by noise (due to the geometrical configuration) than the vertical component. Furthermore, the weighting factors for the vertical component are nearly independent of location  $j$ , while the factors affecting the variances of the horizontal components change strongly.

### 2) KINETIC ENERGY

The kinetic energy can be expressed as

$$\begin{aligned} \langle K_j \rangle &= \langle \tilde{K}_j \rangle + (a_j + b_j/2) \langle \sigma_j^2 \rangle \quad \text{with} \\ \langle K_j \rangle &= \frac{1}{2} (\overline{\langle u_j'^2 \rangle} + \overline{\langle v_j'^2 \rangle} + \overline{\langle w_{j,i}'^2 \rangle}). \end{aligned} \quad (6)$$

TABLE 1. Constants depending on the geometrical configuration. The first three columns are the normalized water depth, the distance from the emitter (TRA, see Fig. 1a), and the Doppler angle, respectively. The last three columns are the noise weighting factors for the vertical, horizontal turbulence variances, and the turbulence kinetic energy, respectively.

$z/h$	$d_j$ (cm)	$\alpha_j$ (°)	$a_j$	$b_j$	$a_j + b_j/2$
0.97	22.9300	24.4172	11.1806	0.5234	11.4423
0.94	23.2550	24.1324	11.4421	0.5228	11.7035
0.90	23.5850	23.8543	11.7065	0.5223	11.9676
0.87	23.9100	23.5827	11.9737	0.5218	12.2346
0.84	24.2300	23.3175	12.2437	0.5213	12.5044
0.81	24.5550	23.0540	12.5213	0.5208	12.7817
0.78	24.8800	22.8008	12.7972	0.5203	13.0573
0.75	25.2050	22.5491	13.0806	0.5199	13.3405
0.71	25.5300	22.3072	13.3622	0.5194	13.6219
0.68	25.8500	22.3072	13.3622	0.5194	13.6219
0.65	26.1750	22.0665	13.6515	0.5190	13.9110
0.62	26.4950	21.8312	13.9438	0.5186	14.2031
0.59	26.8200	21.6047	14.2341	0.5182	14.4932
0.56	27.1400	21.3793	14.5323	0.5178	14.7912
0.53	27.4600	21.1587	14.8334	0.5174	15.0921
0.50	27.7850	20.9426	15.1375	0.5171	15.3960
0.46	28.1050	20.7311	15.4445	0.5167	15.7029
0.43	28.4250	20.5239	15.7545	0.5164	16.0127
0.40	28.7450	20.3209	16.0675	0.5161	16.3255
0.37	29.0650	20.1219	16.3834	0.5157	16.6413
0.34	29.3850	19.9269	16.7024	0.5154	16.9601
0.31	29.7050	19.7357	17.0242	0.5151	17.2818
0.28	30.0250	19.5483	17.3491	0.5148	17.6065
0.25	30.3450	19.3644	17.6769	0.5146	17.9341
0.22	30.6650	19.1840	18.0076	0.5143	18.2648
0.18	30.9850	19.0041	18.3470	0.5140	18.6040
0.15	31.3050	18.8305	18.6837	0.5137	18.9406
0.12	31.6250	18.6601	19.0234	0.5135	19.2802
0.09	31.9400	18.4901	19.3719	0.5132	19.6285
0.06	32.2600	18.3258	19.7176	0.5130	19.9741
0.03	32.5800	18.1646	20.0662	0.5128	20.3226

### 3) REYNOLDS STRESS TERMS AND TRICOVARIANCES

With the same approach as outlined above, we obtain the Reynolds stress and tricovariance terms entering in the turbulent energy balance equation for a 2D mean flow:

$$\overline{\langle u_j' w_{j,i}' \rangle} = \frac{1}{2 \sin(\alpha_j)} (\overline{\langle \tilde{V}'_{1,j} \rangle} - \overline{\langle \tilde{V}'_{2,j} \rangle}) = \overline{\langle u_j' w_{j,i}' \rangle}, \quad (7)$$

$$\begin{aligned} \overline{\langle u_j'^3 \rangle} &= \frac{1}{8 \sin^3(\alpha_j/2)} (\overline{\langle \tilde{V}'_{1,j} \rangle} - \overline{\langle \tilde{V}'_{2,j} \rangle} + 3\overline{\langle \tilde{V}'_{1,j} \rangle \langle \tilde{V}'_{2,j} \rangle} \\ &\quad - 3\overline{\langle \tilde{V}'_{2,j} \rangle \langle \tilde{V}'_{1,j} \rangle}) = \overline{\langle u_j'^3 \rangle} \end{aligned}$$

$$\begin{aligned} \overline{\langle v_j'^3 \rangle} &= \frac{1}{8 \sin^3(\alpha_j/2)} (\overline{\langle \tilde{V}'_{3,j} \rangle} - \overline{\langle \tilde{V}'_{4,j} \rangle} + 3\overline{\langle \tilde{V}'_{3,j} \rangle \langle \tilde{V}'_{4,j} \rangle} \\ &\quad - 3\overline{\langle \tilde{V}'_{4,j} \rangle \langle \tilde{V}'_{3,j} \rangle}) = \overline{\langle v_j'^3 \rangle} \end{aligned}$$

$$\begin{aligned} \overline{\langle w_{j,i}'^3 \rangle} &= \frac{1}{8 \cos^3(\alpha_j/2)} (\overline{\langle \tilde{V}'_{1,j} \rangle} - \overline{\langle \tilde{V}'_{2,j} \rangle} + 3\overline{\langle \tilde{V}'_{1,j} \rangle \langle \tilde{V}'_{2,j} \rangle} \\ &\quad + 3\overline{\langle \tilde{V}'_{2,j} \rangle \langle \tilde{V}'_{1,j} \rangle}) = \overline{\langle w_{j,i}'^3 \rangle}, \end{aligned} \quad (8)$$

$$\begin{aligned}
\overline{\langle u_j'^2 w_{j,l}' \rangle} &= \frac{1}{4 \sin(\alpha_j) \sin(\alpha_j/2)} \\
&\times (\overline{\langle \tilde{V}_{1,j}' \rangle} + \overline{\langle \tilde{V}_{2,j}' \rangle} - \overline{\langle \tilde{V}_{1,j}' \rangle \langle \tilde{V}_{2,j}' \rangle} - \overline{\langle \tilde{V}_{1,j}' \rangle \langle \tilde{V}_{2,j}' \rangle}) \\
&= \overline{\langle \tilde{u}_j'^2 \tilde{w}_{j,l}' \rangle} \\
\overline{\langle v_j'^2 w_{j,l}' \rangle} &= \frac{1}{4 \sin(\alpha_j) \sin(\alpha_j/2)} \\
&\times (\overline{\langle \tilde{V}_{3,j}' \rangle} + \overline{\langle \tilde{V}_{4,j}' \rangle} - \overline{\langle \tilde{V}_{3,j}' \rangle \langle \tilde{V}_{4,j}' \rangle} - \overline{\langle \tilde{V}_{3,j}' \rangle \langle \tilde{V}_{4,j}' \rangle}) \\
&= \overline{\langle \tilde{v}_j'^2 \tilde{w}_{j,l}' \rangle}. \tag{9}
\end{aligned}$$

There are no contributions from noise signals to the Reynolds stress [Eq. (7)] and all tricovariances terms [Eqs. (8) and (9)]. Equations (8) and (9) are found by taking the skewnesses equal to zero under the white noise assumption. Therefore the probability density function of the noise is symmetrical. Only the effect of spatial averaging is still present in the measured quantities.

As Garbini et al. (1982) have shown, the ambiguity induced by the spatial averaging process can be neglected as long as the sample volume size is sufficiently small to avoid large spatial averaging in the spectrum. For nonfocused piston emitters, the size of measurement volume changes along the beam axis and the averaging effect varies in rapport. The phase array emitter used here ensures a constant sample volume size over the entire ensonified water depth. Thus, variations in spatial averaging contributions will result from changes of the flow characteristic only. Effects of this process will be found most likely in the near wall region of the flow where strong gradients occur.

### 3. Principle of correction method

The aim of the correction method is to eliminate the noise terms from the above equations. These contain the additional and undesirable variances discussed in the introduction. For the correction, use will be made of the fact that the configuration of the 3D-ADVP provides a redundant and independent measurement of the quasi-instantaneous vertical velocity component in the longitudinal and transverse planes. All quantities in the following are considered spatially averaged over the sampling volume. Based on Eqs. (5) and (6) the vertical velocities can be rewritten including the noise signal term as

$$\begin{aligned}
\langle w_{j,l}' \rangle(t) &= \langle \tilde{w}_{j,l}' \rangle(t) + \langle n_{j,l}^* \rangle(t) \\
\langle w_{j,t}' \rangle(t) &= \langle \tilde{w}_{j,t}' \rangle(t) + \langle n_{j,t}^* \rangle(t), \tag{10}
\end{aligned}$$

where \* denotes the geometrical weighted noise signal.

The cross correlation,  $\langle R_{xy,j} \rangle$ , of these two signals at location  $j$  is

$$\begin{aligned}
\langle R_{xy,j} \rangle(\tau) &= \overline{\langle w_{j,l}' \rangle(t) \langle \tilde{w}_{j,t}' \rangle(t + \tau)} \\
&= \overline{\langle \tilde{w}_{j,l}' \rangle(t) \langle \tilde{w}_{j,t}' \rangle(t + \tau)} + \overline{\langle \tilde{w}_{j,l}' \rangle(t) \langle n_{j,t}^* \rangle(t + \tau)} \\
&\quad + \overline{\langle \tilde{w}_{j,t}' \rangle(t + \tau) \langle n_{j,l}^* \rangle(t)} + \overline{\langle n_{j,l}^* \rangle(t) \langle n_{j,t}^* \rangle(t + \tau)}. \tag{11}
\end{aligned}$$

If the noise signals of the two velocity estimates are uncorrelated, we obtain

$$\langle R_{xy,j} \rangle(\tau) = \overline{\langle \tilde{w}_{j,l}' \rangle(t) \langle \tilde{w}_{j,t}' \rangle(t + \tau)}, \tag{12}$$

from which we can calculate the magnitude of the cross spectrum  $\langle S_{xy,j} \rangle$ ,

$$\langle S_{xy,j} \rangle(f) = \left| \int_{-\infty}^{+\infty} \langle R_{xy,j} \rangle(\tau) \exp(-j2\pi f\tau) d\tau \right|, \tag{13}$$

to finally express the noise spectrum,

$$\begin{aligned}
\langle N_j^* \rangle(f) &= b_j \langle N_j \rangle(f) = \langle S_{xx,j} \rangle(f) - \langle S_{xy,j} \rangle(f) \\
&= \langle S_{yy,j} \rangle(f) - \langle S_{xy,j} \rangle(f), \tag{14}
\end{aligned}$$

where  $b_j$  is the geometrical weighting factor for the vertical component defined in section 2b. Here  $\langle S_{xx,j} \rangle(f)$  and  $\langle S_{yy,j} \rangle(f)$  are the power spectral densities of the fluctuating vertical velocity components measured in the longitudinal and transverse plane, respectively. The power spectral density and the related noise variance that appears in Eq. (5), common to all measured velocity components, is then

$$\begin{aligned}
\langle N_j \rangle(f) &= \frac{1}{b_j} [\langle S_{xx,j} \rangle(f) - \langle S_{xy,j} \rangle(f)] \\
&= \frac{1}{b_j} [\langle S_{xx,j} \rangle(f) - \langle S_{xy,j} \rangle(f)] \\
\langle \sigma_j \rangle^2 &= \frac{1}{b_j} \int_{-\infty}^{+\infty} [\langle S_{xx,j} \rangle(f) - \langle S_{xy,j} \rangle(f)] df \\
&= \frac{1}{b_j} \int_{-\infty}^{+\infty} [\langle S_{xx,j} \rangle(f) - \langle S_{xy,j} \rangle(f)] df. \tag{15}
\end{aligned}$$

It has to be emphasized that, for this method to work, the spectra need to be robustly estimated from long time series with high degrees of freedom, or the statistical uncertainty will result in negative variances. It is now possible to verify the above assumptions on the noise signal if the following relations are valid:

$$\begin{aligned}
\overline{\langle w_{j,l}'^2 \rangle} &= \overline{\langle w_{j,t}'^2 \rangle} \\
\langle S_{xy,j} \rangle(f) &< \langle S_{xx,j} \rangle(f) \quad \text{for all } f \\
\langle S_{xx,j} \rangle(f) &= \langle S_{yy,j} \rangle(f) \quad \text{for all } f. \tag{16}
\end{aligned}$$

The first relation in Eq. (16) indicates that the receivers can be considered as identical due to the same noise contribution in terms of their energy. The last two relations show that the magnitude of the cross-spectrum is lower than the power spectral densities of the vertical velocity component calculated from the longitudinal and



TABLE 2. Hydraulic parameters.

$Q$ ( $\text{m}^3 \text{ s}^{-1}$ )	$h$ (cm)	$u_{*,s}$ ( $\text{cm s}^{-1}$ )	$u_{*,m}$ ( $\text{cm s}^{-1}$ )	$S$ ( $\times 10^{-4}$ )	$\text{Re}_h$ ( $\times 10^3$ )	$\text{Fr}_h$	$B/h$	$k_s^+$	$\Pi$
0.069	10	1.71	1.66	3	28	0.28	24.5	36	0.11

transverse planes. Since these two spectra are identical, any difference can only originate from the uncorrelated noise signals between the two independent measurements of  $\langle w' \rangle(t)$ . With the geometrical relations given in section 2b it is possible to extract the noise spectrum and the corresponding variances for each velocity component for all locations  $j$ .

#### 4. Experimental setup

Experiments were carried out in a laboratory open channel (29 m long, 2.45 m wide, 75 cm deep) under uniform flow conditions over a rough bed. The measurement section is placed 12 m downstream from the entrance where turbulent flow is well developed. All velocity data presented here were taken at the center of the channel with the transducers mounted in a separate chamber above the flow as indicated in Fig. 1.

The experiments were conducted in clear water conditions where particles do not contribute significantly to backscattering (Shen and Lemmin 1997). All measurements presented here are extracted from datasets acquired over 600-s intervals in order to minimize the statistical uncertainty (less than 5% with the present device bandwidth). The spatial and temporal resolutions are dependent of the settings of the instrument and are equal to  $\sim 3$  mm and 0.024 s, respectively, in the present case.

The hydraulic parameters that indicate a subcritical highly turbulent flow are given in Table 2. The variables  $u_{*,m}$  and  $u_{*,s}$  represent the friction velocities obtained from linear extrapolation of the mean Reynolds stress at the wall and from the energy line slope formula for uniform flow, respectively. The relative errors (relative to  $u_{*,s}$ ) are less than 3%, which shows that uniform flow conditions are established. The roughness Reynolds number  $k_s^+$  is evaluated from the standard roughness of the sand ( $d_{50} = 2.1$  mm) and is equal to 36, which indicates an incompletely rough channel bed.

Figure 2 shows results for the mean longitudinal velocity measurements. They agree well with theoretical estimations (wall-law, velocity-defect law, and Coles wake function). The  $\Pi$  factor of Coles wake function has a value of 0.11 (Table 2; see Fig. 2d) and is obtained using the velocity defect law with  $\kappa$  equal to 0.4. These values are typical for uniform open-channel flow with a rough bed (Graf and Altinakar 1998).

In the following, we will apply the noise corrections to the fluctuating components of these measurements.

#### 5. Results and discussion

##### a. Validation of the method

Equation (16) gives the relations that are needed for the evaluation of the application of the proposed method to the sonar data. Figure 3 shows the variance profiles of the vertical fluctuating velocity component measured by the two independent multistatic subsystems. The relative error between the two measurements, which is also shown, never exceeds a value of 1%, except for the point nearest to the bed ( $z \approx 3$  mm). That high error value is due to sound-scattering problems at the wall–water interface. The low error values at all other depths indicate that the first relation of Eq. (16) is valid and that the two subsystems can be taken as identical and close to ideal.

Figures 4a and 4b show the magnitude of the cross-spectrum  $\langle S_{xy,j} \rangle$ , the power spectral densities  $\langle S_{yy,j} \rangle$ , and  $\langle S_{xx,j} \rangle$  measured simultaneously in the longitudinal and transverse planes at water depth  $z/h = 0.4$  and  $z/h = 0.9$ , respectively. The last two relations of Eq. (16) can be considered as valid and it can be confirmed that the lower energy contained in  $\langle S_{xy,j} \rangle$  is due to the attenuation of the uncorrelated signal parts between the two independent measurements of the vertical velocity fields. The difference between either of the power spectral densities and the magnitude of the cross-spectrum is identified as the noise spectrum of the vertical velocity component  $\langle N_j^* \rangle$ , also drawn in Figs. 4a and 4b. At each depth, the calculated cross-spectrum has been taken to evaluate the noise spectrum common to all measured components.

In Fig. 5 the noise spectra  $\langle N_j \rangle$  for different depths are given. In all cases we observe a flat noise spectrum over the investigated frequency domain confirming the assumption of white noise. The level of the noise signal changes with depth. This trend is confirmed by the noise profile in Fig. 6 where its standard deviation normalized with the friction velocity has been plotted. The noise contribution increases first slowly toward the bed but increases significantly for  $z/h < 0.15$ . Also shown in Fig. 6 is the relative difference of the standard noise deviations calculated with the cross-correlation method applied to two consecutive points (Garbini et al. 1982) and the two independent vertical velocity field measurements, respectively. The relative difference is about 5% near the free surface and increases toward the wall where it reaches a value of 40%. The depth-averaged difference is about 20%. The disadvantage of the method used by Garbini et al. (1982) is evident because it



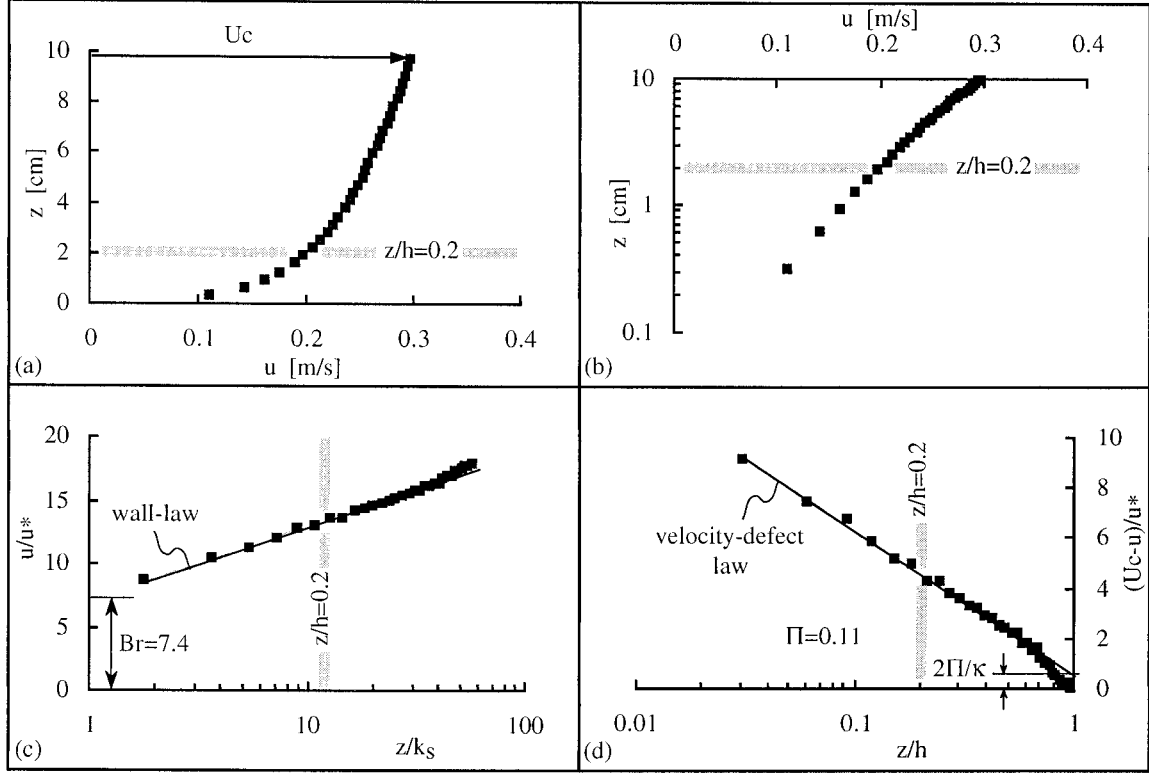


FIG. 2. Mean velocity measurements in an open-channel flow (see Table 2 for the hydraulic flow characteristics). (a) Mean longitudinal velocity profile. (b) Universal logarithmic velocity profile. (c) Wall-law validation in the inner flow region and evaluation of the constant  $Br$  of the logarithmic profile. (d) Velocity-defect law validation and  $\pi$ -factor evaluation of Cole's wake function.

overestimates the noise part. It actually incorporates part of the uncorrelated but desired velocity signal between two consecutive points into the noise signal.

The same effect is also seen in Fig. 7 where the spectrum calculated with the two point method, called  $\langle S_{j,j+1} \rangle$ , is lower than the spectrum  $\langle S_{xy,j} \rangle$  at depth  $z/h = 0.4$ . Additionally, in the inertial subrange, the slope of  $\langle S_{j,j+1} \rangle$  is weakly increased compared to that of  $\langle S_{xy,j} \rangle$ . Furthermore, in the range from 10 to 20 Hz the spectrum

$\langle S_{j,j+1} \rangle$  becomes flat whereas the spectrum  $\langle S_{xy,j} \rangle$  holds the same slope. That behaviour may originate from the overlapping of two consecutive sample volumes implying an incomplete decorrelation of the noise signals.

## b. Results

### 1) POWER SPECTRAL DENSITIES

In Figs. 8a and 8b the uncorrected and corrected power spectral densities are shown for the longitudinal and transverse fluctuating velocity components at depth  $z/h = 0.68$ . In the higher frequency domain, the characteristic flattening of the noise-affected spectra can be distinguished. As mentioned above, the contribution of the noise in the longitudinal and transverse velocity components is more pronounced than for the vertical component mainly because of the larger magnitude of the weighting factors due to the geometrical configuration. These factors are the same for the longitudinal and transverse components. Therefore the effect of noise attenuation on the power spectra is particularly significant for both components. The slope of  $-5/3$  of the spectrum in the inertial subrange traced in Figs. 8a and 8b is followed by the two corrected spectra indicating an effective correction.

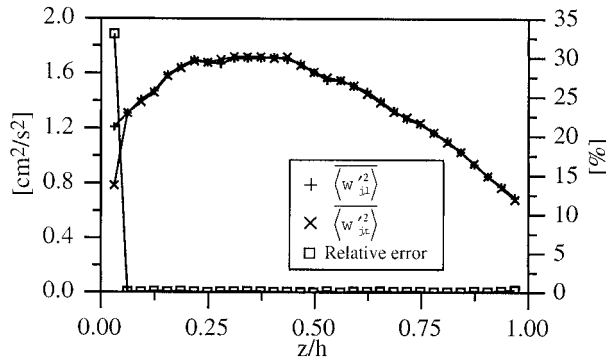


FIG. 3. Comparison of the two vertical velocity variances measured in the longitudinal and transverse flow sections. The squared line shows the relative error in percent.

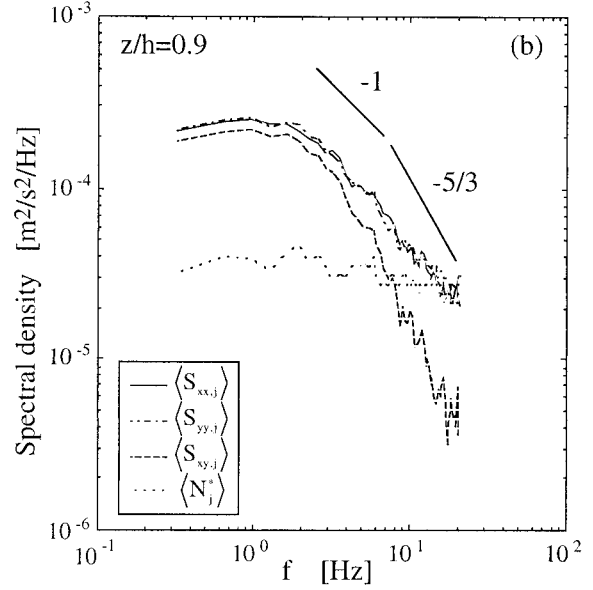
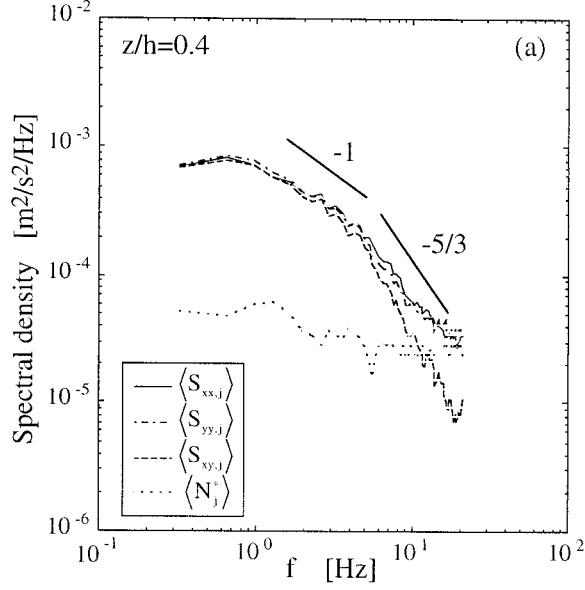


FIG. 4. Power spectra of vertical fluctuating velocity and corresponding noise signals. (a) At depth  $z/h = 0.4$ . (b) At depth  $z/h = 0.9$ . In the two figures the solid line, dash-dotted line, and dashed line represent the power spectra from the longitudinal, transverse, and cross-correlation measurements, respectively. The dotted lines show the extracted vertical noise signals.

## 2) TURBULENT INTENSITIES

Figure 9 shows the uncorrected and corrected turbulent intensities for each component normalized by the friction velocity. The turbulent intensity is defined as the magnitude of the turbulent velocity fluctuations. For each depth, the corrected quantities are obtained from the integration of the corresponding corrected spectra as those presented in Figs. 8a and 8b. Also drawn in

Fig. 9 are the semitheoretical curves of the turbulent intensities given by Nezu and Nakagawa (1993) as

$$\begin{aligned}\sqrt{u'^2}/u_* &= 2.3 \exp(-z/h) \\ \sqrt{v'^2}/u_* &= 1.63 \exp(-z/h) \\ \sqrt{w'^2}/u_* &= 1.27 \exp(-z/h).\end{aligned}\quad (17)$$

Again, the difference of the uncorrected and the corrected intensities of the longitudinal and the transverse components is more significant than for the vertical component. The comparison of the corrected quantities with the curves from Eq. (17) allows a certain evaluation of the efficiency of the correction method (see part 5c for the error analysis). For all three components the

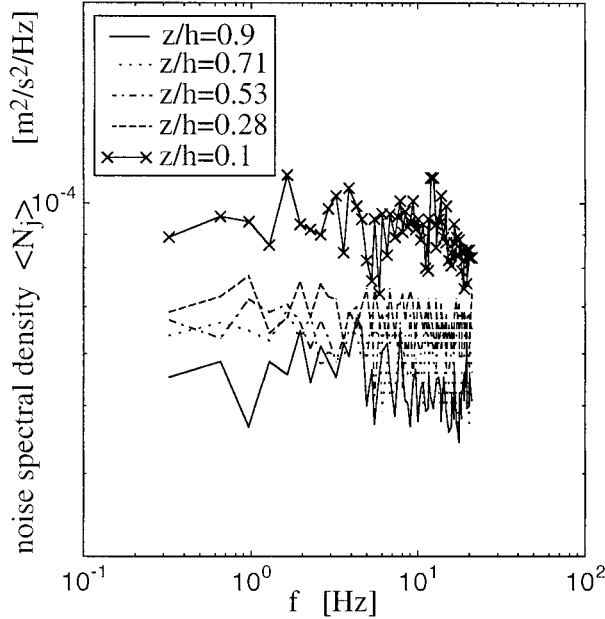


FIG. 5. Power spectra of noise signals at different water depths.

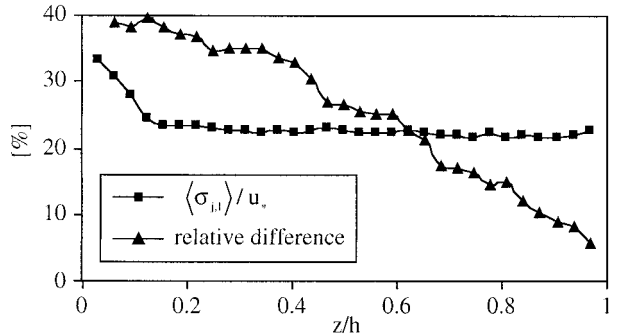


FIG. 6. Profile of noise standard deviation relative to the friction velocity (squares). Profile of relative difference of the standard noise deviations calculated with the cross-correlation method applied to two consecutive points (Garbini et al. 1982) and the two independent vertical velocity field measurements.

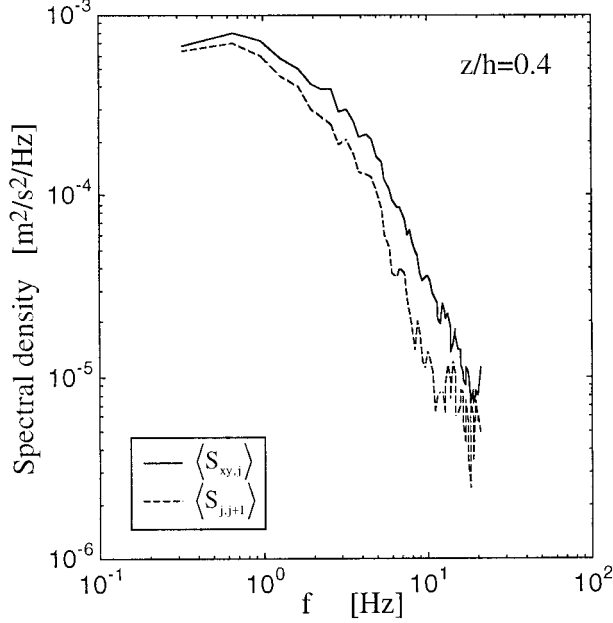


FIG. 7. Spectra of the vertical fluctuating velocity component at depth  $z/h = 0.4$ . The solid line represents the result of the cross-correlation between the measurements in the longitudinal and transverse flow sections. The dashed line shows the result of the cross-correlation between two consecutive points as proposed by Garbini et al. (1982).

curves are in good agreement with the measurements in the flow region  $z/h > 0.2$ .

In the range  $z/h < 0.2$ , the vertical and longitudinal intensities deviate significantly from the theoretical curves. If the comparison of the corrected data is limited

to the curves expressed by Eq. (17) these deviations could be interpreted as inaccuracies of the instrument in the wall region of the flow. However, if we consider the effect of roughness on turbulence intensities, which is not taken into account in Eq. (17), these deviations may not necessarily be the result of measurement inaccuracies.

To investigate this point further, the corresponding curves from measurements of turbulent intensities over a rough bed with a normalized roughness value of  $k_s^+ = 85$ , presented by Grass (1971) using hydrogen-bubble technique, are also plotted in Fig. 9. It can be seen that the effect of roughness is to reduce the longitudinal turbulence intensity for  $z/h < 0.3$ . The vertical intensity is less affected. It is evident that our corrected measured data are in better agreement with these curves taking into account bed roughness. The deviation of the transverse intensity is less important. A similar behavior was also observed by Nezu and Nakagawa (1993). It confirms that the roughness strongly affects the longitudinal intensity for  $z/h < 0.3$  and less so the transverse and vertical ones.

### 3) TURBULENT KINETIC ENERGY AND SHEAR STRESS PROFILES

In Fig. 10 the uncorrected, the corrected turbulent kinetic energy  $K_j = \frac{1}{2}(\overline{u_j'^2} + \overline{v_j'^2} + \overline{w_j'^2})$ , and the mean covariance term  $-2\overline{u'w'}$  are compared to the following relations:

$$\begin{aligned} K/u_*^2 &= 4.78 \exp(-2z/h) \\ -2\overline{u'w'}/u_*^2 &= 2(1 - z/h). \end{aligned} \quad (18)$$

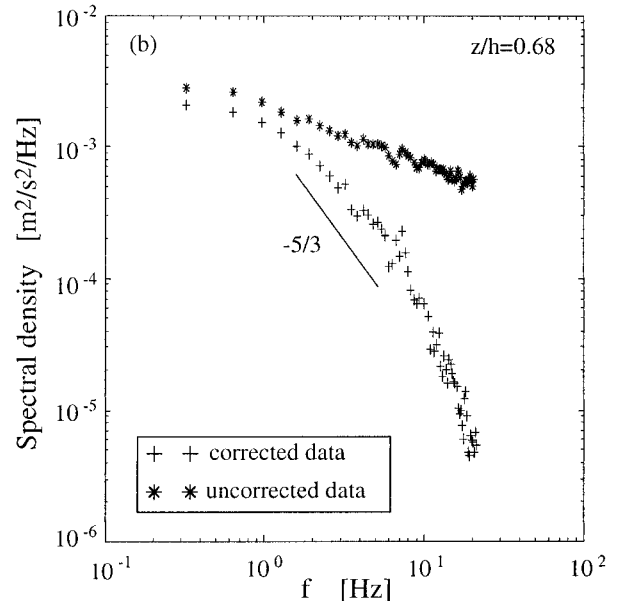
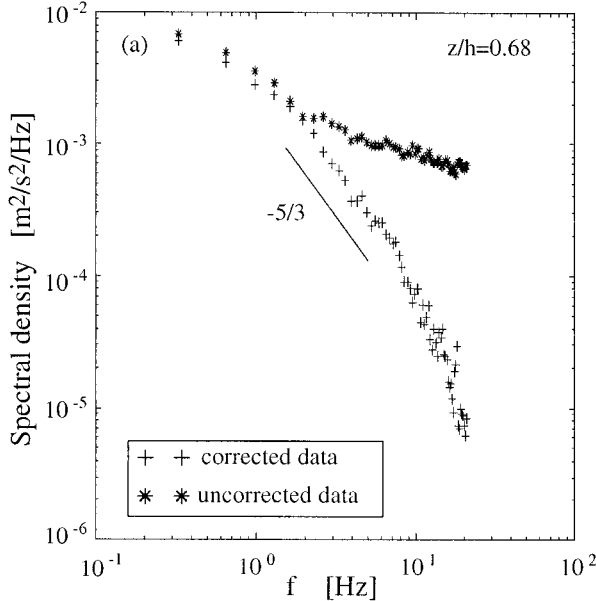


FIG. 8. Power spectra of uncorrected and corrected fluctuating velocities at depth  $z/h = 0.68$ . (a) For the longitudinal component, (b) for the transverse component. In each figure the stars represent the uncorrected data, the crosses show the corrected data.

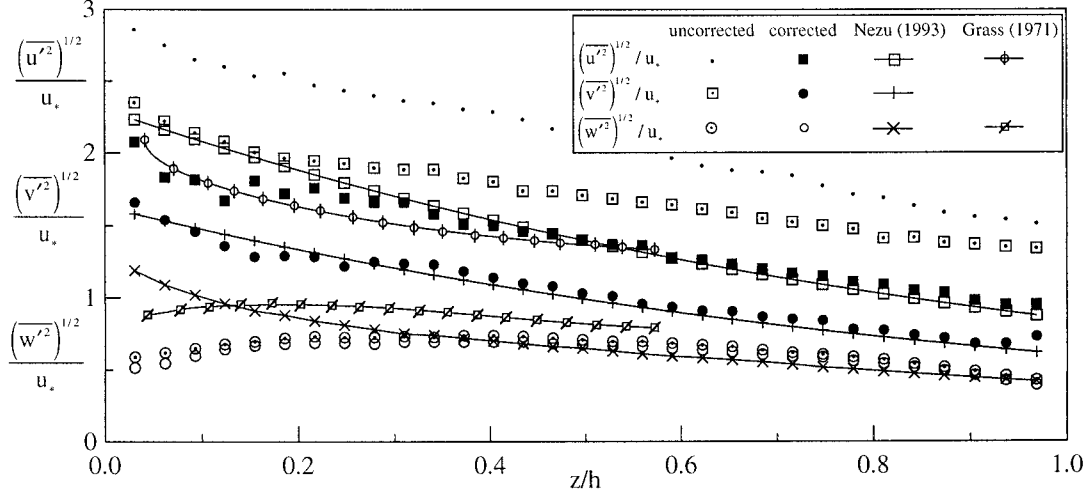


FIG. 9. Profiles of turbulence intensities relative to the friction velocity: from the uncorrected data, from the corrected data, from the semitheoretical curves of Nezu and Nakagawa (1993) and from hydrogen-bubble technique measurements of Grass (1971).

Again, the difference between the uncorrected and the corrected kinetic energy is important due to the sum of the geometrical weighting factors. The agreement of the corrected measurement with the semitheoretical prediction is good for  $z/h > 0.2$ . In the region  $z/h < 0.2$ , the deviation becomes more pronounced [the bottom roughness effect is not taken into account in Eqs. (18)].

The shear stress profile also shows a deviation of the measured profile from the theoretical prediction for  $z/h < 0.2$ . Since this quantity is inherently not affected by the noise signal present in the turbulent intensities [see section 2b(3)] the only remaining error source is related to the spatial averaging effect in the sample volume. However, the possible effect of bed roughness on the

shear stress in this profile range is not well documented in the literature.

#### 4) TERMS OF THE ENERGY BALANCE EQUATION

In Fig. 11 the profiles of the different terms of the energy balance equation, all normalized by the term  $h/u_*^3$ , over the whole water depth are presented. The uncorrected and corrected energy dissipation rates are evaluated from the inertial subrange of the longitudinal uncorrected and corrected spectra, respectively. The following formula is used:

$$\varepsilon = [C^{-1} k_u^{5/3} \overline{u'^2} S_u(k_u)]^{3/2}, \quad (19)$$

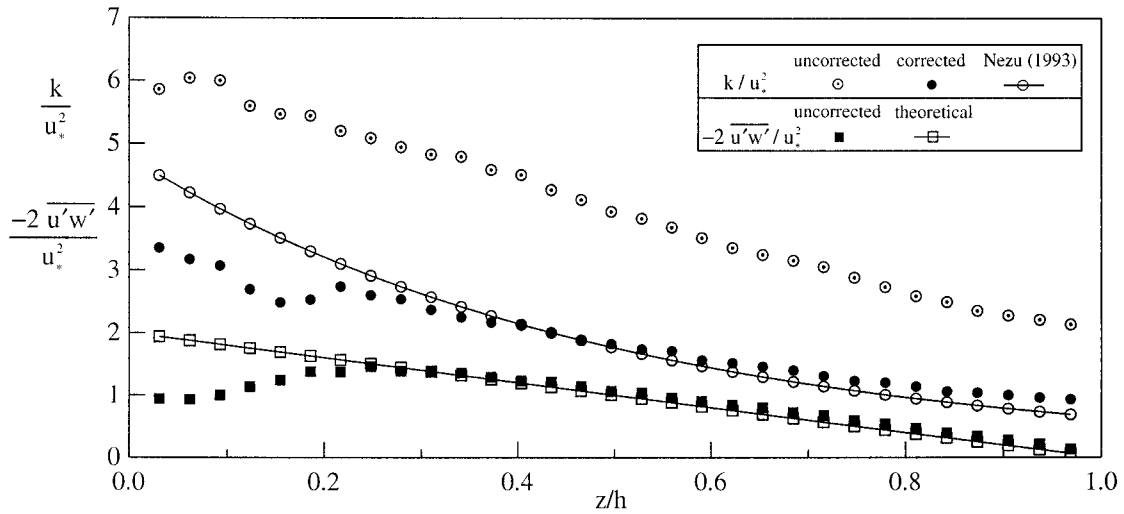


FIG. 10. Profiles of turbulent kinetic energy relative to the friction velocity for uncorrected data, corrected data, and semitheoretical curve of Nezu and Nakagawa (1993). Profiles of shear stress relative to the friction velocity for uncorrected data and theoretical curve.

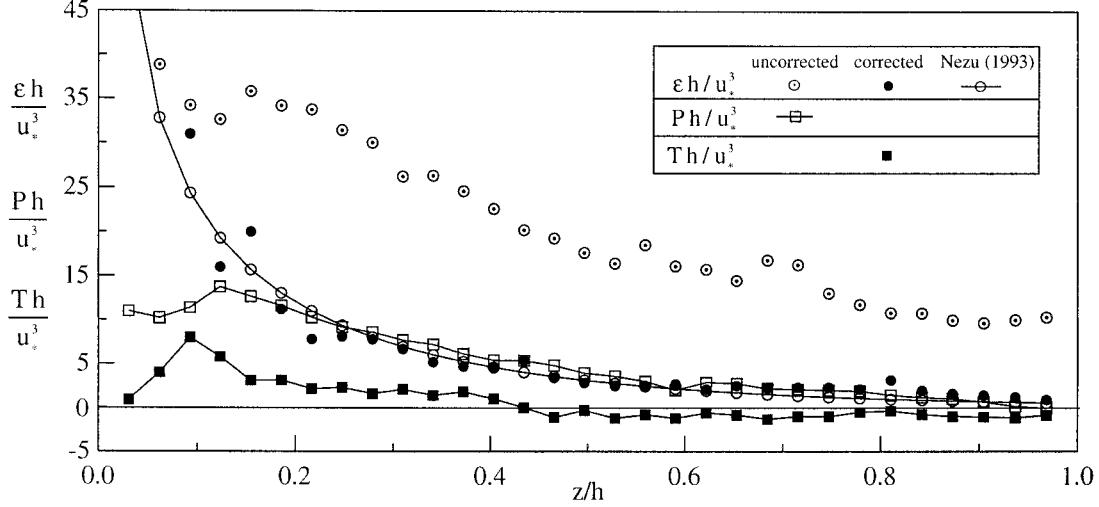


FIG. 11. Profiles of normalized terms of the turbulent energy balance equation: the turbulent energy dissipation term (from the corrected and uncorrected data), the production, and corrected transport terms.

where  $C$  is the Kolmogorov constant (with a value of 0.5), and  $k_u$ ,  $S_u(k_u)$ , and  $\overline{u'^2}$  are the longitudinal wavenumber, the longitudinal wavenumber spectrum, and the longitudinal variance, respectively. It is obvious from Fig. 8 that the uncorrected dissipation rate is largely overestimated because the  $-5/3$  power law is not observed in the uncorrected spectrum. In consequence, the dissipation rate calculated from the uncorrected spectrum is much higher than the one calculated from the corrected spectrum (Fig. 11). Good agreement is found between the corrected normalized  $\varepsilon h/u_*^3$  and the expression given by Nezu and Nakagawa (1993):

$$\frac{\varepsilon h}{u_*^3} = E_1 (z/h)^{-1/2} \exp(-3z/h), \quad (20)$$

where the value  $E_1$  is equal to 9.8 for a Reynolds number between  $10^4$  and  $10^5$ .

Also drawn in Fig. 11 are the normalized production and corrected transport terms, written as

$$\begin{aligned} \frac{Ph}{u_*^3} &= \frac{P_{11}h}{2u_*^3} = -\frac{\overline{u'w'}h}{u_*^3} \frac{\partial \bar{u}}{\partial z} \\ \frac{Th}{u_*^3} &= \frac{(T_{11} + T_{22} + T_{33})h}{2u_*^3} \\ &= -\frac{h}{2u_*^3} \frac{\partial}{\partial z} (\overline{u'^2 + v'^2 + w'^2} w'). \end{aligned} \quad (21)$$

For  $z/h < 0.15$ , the profile of the production term decreases, which indicates an energy deficiency (the production is lower than the dissipation). This trend probably confirms the inaccuracies of the measurements in that region due to the spatial averaging process in the sheared velocity domain.

In the free-surface flow region the dissipation is slightly higher than the production term, which again

is indicative for an energy deficiency. The normalized transport term is also drawn in Fig. 11 and is positive for  $z/h \leq 0.4$  with a maximum value of 9. For  $z/h > 0.1$ , the corrected results are in agreement with the measurements found in Nezu and Nakagawa (1993). For  $z/h < 0.1$ , this term decreases toward the wall, which again indicates a deviation from the results found in the literature.

### c. Error analysis

Here we present a quantitative value of the relative differences of the corrected mean turbulence measurements with the above-mentioned models. The profiles of relative differences are computed for the longitudinal, transverse, and vertical turbulent intensities, the turbulent kinetic energy and the shear stress, noted  $\varepsilon_u$ ,  $\varepsilon_v$ ,  $\varepsilon_w$ ,  $\varepsilon_K$ ,  $\varepsilon_{uw}$ , respectively. They are calculated as follows;

$$\varepsilon_i(z/h) = \frac{|q_c(z/h) - q_m(z/h)|}{q_m(z/h)}, \quad (22)$$

where  $q_c$  is the corrected measured quantity and  $q_m$  the quantity calculated from the model. Errors written with an overbar,  $\overline{\varepsilon}_i$ , are the depth-averaged relative differences.

For  $z/h > 0.2$ , the depth-averaged values do not exceed 10% (Fig. 12) (for the turbulent kinetic energy), which confirms the high accuracies of the corrected sonar measurements.

Except for the error of the transverse turbulent intensity, all other errors are significant for  $z/h < 0.2$ . As mentioned before it is difficult to attribute these high values clearly to measurement inaccuracies considering that some physical process, especially the bed roughness effects, are not taken into account in the semitheoretical models.

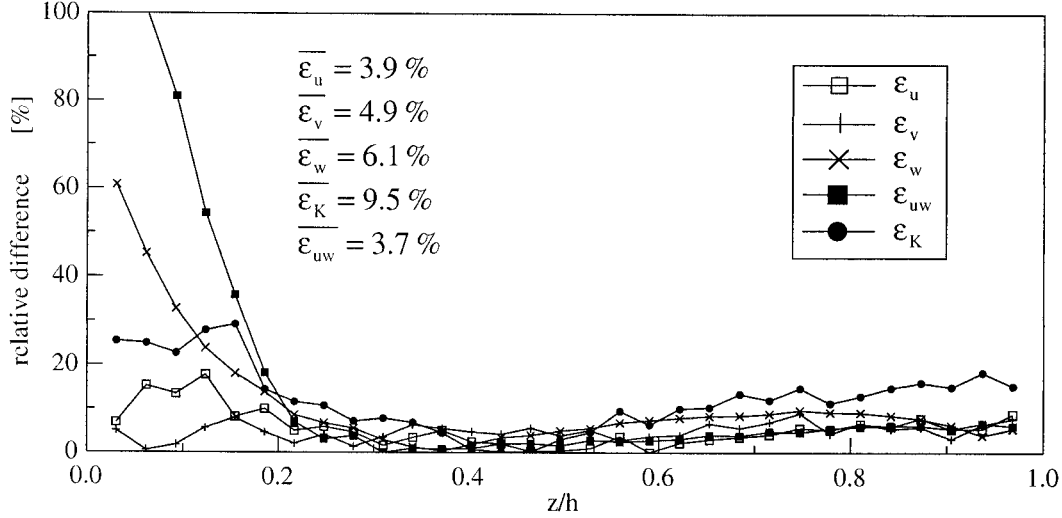


FIG. 12. Profiles of relative errors: for the three turbulence intensities, the turbulent kinetic energy, and the shear stress. The variables written with overbars are the depth-averaged quantities (for  $z/h > 0.2$ ).

## 6. Conclusions

A combination of two techniques to improve the precision of turbulence measurements with a 3D ADVP is discussed.

The first concerns the use of a phase array emitter discussed in Hurther and Lemmin (1998).

The following improvements have been made:

- the sample volume has a constant width ( $\sim 7$  mm) over a maximal distance of 60 cm from the emitter
- the effect of the beam divergence (or phase distortion of the front wave), appearing as an additional noise variance in the measurements, can no longer be distinguished on beam measurements
- spatial averaging effect is considerably reduced and is only dependent on flow characteristics in the vertical flow direction since the emitter's normalized directivity function is no longer a function of the water depth.

The second technique used to increase the signal-to-noise ratio of the measurements is a direct correction method of the Doppler signal. It has been verified that the following noise signal characteristics apply to the method

- the noise has a flat spectrum independent of the flow depth
- the noise signal is uncorrelated from the velocity signal
- the noise signal is uncorrelated between the different receivers
- the receivers and the different analogic circuitries can be considered as identical.

Based on these results it is possible to apply the correction method. It consists in making a redundant measurement of the instantaneous vertical velocity field with

two independent working tristatic subsystems in the longitudinal and transverse flow sections. By calculating the difference between the magnitudes of the auto- and cross-spectra we rebuild the noise spectra of each velocity component by considering the specific geometrical configuration. Thereby, the following mean turbulence quantities were corrected:

- the three turbulence intensities (with a mean relative error of  $\sim 5\%$  in the outer flow domain)
- the turbulent kinetic energy (with a mean relative error of  $\sim 9\%$  in the outer flow domain)
- the turbulence spectra over the entire resolved frequency band
- the turbulent energy dissipation rate, which is of particular importance if energy balances are investigated.

From comparisons of the corrected data with raw data and with results from literature, we have shown quantitatively that the corrected ADVP data are highly reliable and accurate in the flow region  $z/h > 0.2$ . This result is of major importance for our further investigations concerning free surface turbulence in open-channel flow based on 3D-ADVP velocity field measurements. Therefore the presented method has been programmed as a systematic correction method of the sonar measurements. Another advantage of the proposed technique is that it does not require assumptions about the flow characteristics. As a result the presented solution can be applied to any ADVP applications as long as the geometrical configuration permits a simultaneous redundant velocity component measurement. Voulgaris and Throwbridge (1998) have mentioned in their conclusion that the presence of high noise terms is an inescapable feature of the geometry of an ADV. This remark is valid for their case. We have shown here that with another geometrical configuration and an appro-



appropriate signal treatment the noise contribution to the mean turbulence terms can be eliminated.

Supplementary studies are needed to quantitatively evaluate the “true” precision of sonar measurements in the wall region of an open-channel flow. From theoretical considerations (which are difficult to validate experimentally), we allocate the remaining deviations (in the wall region) of the corrected measurements to effects of the spatial averaging since no other noise process is identified after application of the presented correction method. However, effects of bottom roughness cannot be excluded either.

*Acknowledgments.* Comments by two anonymous reviewers helped to improve the presentation. This work was funded by the Swiss National Science Foundation grant 20-39494.93. We are grateful for the support.

#### REFERENCES

- Cabrera, R., K. Deines, B. Brumley, and E. Terray, 1987: Development of a practical coherent acoustic Doppler current profiler. *Proc. Oceans '87. The Ocean, An International Workplace*, Halifax, NS, Canada, IEEE, 93–97.
- Garbini, J. L., F. K. Forster, and J. E. Jorgensen, 1982: Measurement of fluid turbulence based on pulsed ultrasound techniques. Part 1. Analysis. *J. Fluid Mech.*, **118**, 445–470.
- Graf, W. H., and M. Altinakar, 1998: *Fluvial Hydraulics*. Wiley & Sons Ltd., 681 pp.
- Grass, A. J., 1971: Structural features of turbulent flow over smooth and rough boundaries. *J. Fluid Mech.*, **50**, 233–255.
- Hurther, D., and U. Lemmin, 1998: A constant beamwidth transducer for 3D acoustic Doppler profile measurements in open channel flows. *Meas. Sci. Technol.*, **9**, 1706–1714.
- Lemmin, U., and T. Rolland, 1997: An acoustic velocity profiler for laboratory and field studies. *J. Hydraul. Eng.*, **123**, 1089–1098.
- Lhermitte, R., and U. Lemmin, 1994: Open-channel flow and turbulence measurement by high-resolution Doppler sonar. *J. Atmos. Oceanic Technol.*, **11**, 1295–1308.
- Lohrmann, A., R. Cabrera, and N. C. Kraus, 1995: Direct measurements of Reynolds stress with an acoustic Doppler velocimeter. *Proc. IEEE Fifth Conf. on Current Measurements*, St. Petersburg, FL, IEEE Oceanic Engineering Society, 205–210.
- Nezu, I., and H. Nakagawa, 1993: Turbulence in open channel flows. *AIHR Monogr. Series*, No. 4, Balkema, 281 pp.
- Rolland, T., 1994: Développement d’une instrumentation Doppler ultrasonore adaptée à l’étude hydraulique de la turbulence dans les canaux. Ph.D. dissertation 1281, Swiss Federal Institute of Technology–Lausanne, 155 pp.
- Shen, C., and U. Lemmin, 1997: Ultrasonic scattering in highly turbulent clear water flow. *Ultrasonics*, **35**, 57–64.
- Voulgaris, G., and J. H. Trowbridge, 1998: Evaluation of the acoustic Doppler velocimeter (ADV) for turbulence measurements. *J. Atmos. Oceanic Technol.*, **15**, 272–289.
- Zedel, L., A. E. Hay, and A. Lohrmann, 1996: Performance of a single beam pulse-to-pulse coherent Doppler profiler. *IEEE J. Oceanic Eng.*, **21**, 290–297.