

ARTICLE OPEN



A critical examination of compound stability predictions from machine-learned formation energies

Christopher J. Bartel¹✉, Amalie Trewartha¹, Qi Wang², Alexander Dunn^{1,2}, Anubhav Jain^{1,2} and Gerbrand Ceder^{1,3}✉

Machine learning has emerged as a novel tool for the efficient prediction of material properties, and claims have been made that machine-learned models for the formation energy of compounds can approach the accuracy of Density Functional Theory (DFT). The models tested in this work include five recently published compositional models, a baseline model using stoichiometry alone, and a structural model. By testing seven machine learning models for formation energy on stability predictions using the Materials Project database of DFT calculations for 85,014 unique chemical compositions, we show that while formation energies can indeed be predicted well, all compositional models perform poorly on predicting the stability of compounds, making them considerably less useful than DFT for the discovery and design of new solids. Most critically, in sparse chemical spaces where few stoichiometries have stable compounds, only the structural model is capable of efficiently detecting which materials are stable. The nonincremental improvement of structural models compared with compositional models is noteworthy and encourages the use of structural models for materials discovery, with the constraint that for any new composition, the ground-state structure is not known a priori. This work demonstrates that accurate predictions of formation energy do not imply accurate predictions of stability, emphasizing the importance of assessing model performance on stability predictions, for which we provide a set of publicly available tests.

npj Computational Materials (2020)6:97; <https://doi.org/10.1038/s41524-020-00362-y>

INTRODUCTION

Machine learning (ML) is emerging as a novel tool for rapid prediction of material properties^{1–6}. In general, these predictions are made by fitting statistical models on a large number of data points. Because of the scarcity of well-curated experimental data in materials science, these input data are often obtained from Density Functional Theory (DFT) calculations housed in one of the many open materials databases^{7–12}. In principle, once these models are trained on this immense set of quantum chemical data, the determination of properties for new materials can be made in orders of magnitude less time using the trained models compared with computationally expensive DFT calculations.

Of particular interest is the use of ML to discover new materials. The combinatorics of materials discovery make for an immensely challenging problem—if we consider the possible combinations of just four elements (*A*, *B*, *C*, and *D*), from any of the ~80 elements that are technologically relevant, there are already ~1.6 million quaternary chemical spaces to consider. This is before we consider such factors as stoichiometry ($ABCD_2$, $AB_2C_3D_4$, etc.) or crystal structure, each of which add substantially to the combinatorial complexity. The Inorganic Crystal Structure Database (ICSD) of known solid-state materials contains ~10⁵ entries¹³, several orders of magnitude less than the 10¹⁰ quaternary compositions identified as plausible using electronegativity- and charge-based rules¹⁴. This suggests that (1) there is ample opportunity for new materials discovery and (2) the problem of finding stable materials may resemble the needle-in-a-haystack problem, with many unstable compositions for each stable one. The immensity of this problem is a natural fit for high-throughput ML techniques.

In this work, we closely examine whether recently published ML models for formation energy are capable of distinguishing the relative stability of chemically similar materials and provide a roadmap for doing the same for future models. We show that

although the formation energy of compounds from elements can be learned with high accuracy using a variety of ML approaches, these learned formation energies do not reproduce DFT-calculated relative stabilities. While the accuracy of these models for formation energy approaches the DFT error (relative to experiment), DFT predictions benefit from a systematic cancellation of error^{15,16} when making stability predictions, while ML models do not. Of particular concern for most ML models is the high rate of materials predicted to be stable that are not stable by DFT, impeding the use of these models to efficiently discover new materials. As a result, we propose more critical evaluation methods for ML of thermodynamic quantities.

RESULTS

The relationship between formation energy and stability

A necessary condition for a material to be used for any application is stability (under some conditions). The thermodynamic stability of a material is defined by its Gibbs energy of decomposition, ΔG_d , which is the Gibbs formation energy, ΔG_f , of the specified material relative to all other compounds in the relevant chemical space. Temperature-dependent thermodynamics are not yet tractable with high-throughput DFT and have only sparsely been addressed with ML¹⁷, so material stability is primarily assessed using the decomposition enthalpy, ΔH_d , which is approximated as the total energy difference between a given compound and competing compounds in a given chemical space^{15,16,18,19}. For the purpose of this study, we will directly compare ML predictions and DFT calculations of ΔH_d , hence the lack of entropy contributions is not an issue.

The quantity ΔH_d is obtained by a convex hull construction in formation enthalpy (ΔH_f)-composition space. Figure 1a shows an example for a binary *A–B* space, having three known compounds,

¹Department of Materials Science & Engineering, University of California, Berkeley, Berkeley, CA 94720, USA. ²Energy Technologies Area, Lawrence Berkeley National Laboratory, Berkeley, CA 94720, USA. ³Materials Sciences Division, Lawrence Berkeley National Laboratory, Berkeley, CA 94720, USA. ✉email: cbartel@berkeley.edu; gceder@berkeley.edu

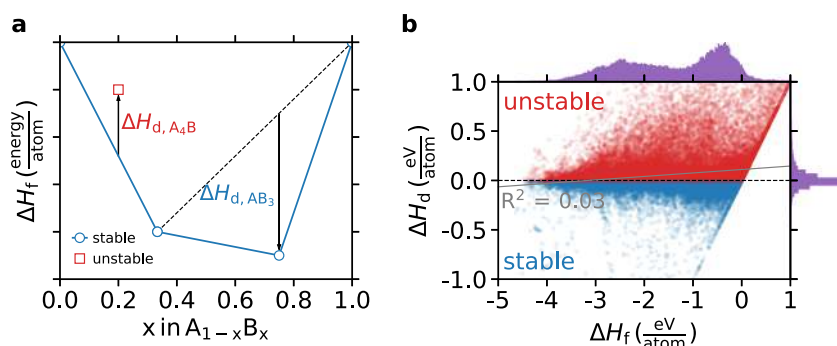


Fig. 1 Distinction between formation and decomposition energies. **a** Illustration of the convex hull construction to obtain the decomposition enthalpy, ΔH_d , from the formation enthalpy, ΔH_f . **b** The decomposition enthalpy, ΔH_d , shown against the formation enthalpy, ΔH_f , for 85,014 ground-state entries in Materials Project, indicating effectively no correlation between the two quantities. The strong linear correlation that is present at $\Delta H_d = \Delta H_f$ arises for chemical spaces that contain only one compound (~3% of compounds). These compounds were excluded from the correlation coefficient, R^2 , determination. A normalized histogram of ΔH_f (ΔH_d) is shown above (along the right side of) **b**. Both histograms are binned every 10 meV/atom.

A_4B , A_2B , and AB_3 . The convex hull is the lower convex enthalpy envelope which lies below all points in the composition space (blue line). Stable compositions lie on the convex hull, and unstable compositions lie above the hull. A_4B is unstable (above the hull), so $\Delta H_d > 0$ and is calculated as the distance in ΔH_f between A_4B and the convex hull of stable points. AB_3 is stable (on the hull), so $\Delta H_d < 0$ and is calculated as the distance in ΔH_f between AB_3 and a hypothetical convex hull constructed without AB_3 (dashed line). $|\Delta H_d|$ is therefore the minimum amount that ΔH_f must decrease for an unstable compound to become thermodynamically stable or the maximum amount that ΔH_f can increase for a stable compound to remain stable. We used ΔH_d in this work instead of the more common, “energy above the hull,” because the former provides a distribution of values for stable compounds, whereas the latter is equal to 0 for all stable compounds. The convex hull construction, described here for a binary system, generalizes for chemical spaces comprised of any number of elements.

Hence, while ΔH_f quantifies to what extent a compound may form from its elements, the thermodynamic quantity that controls phase stability is ΔH_d and arises from the competition between ΔH_f for all compounds within a chemical space. As we show later, while formation enthalpies can be of the order of several eV the value of ΔH_d is typically 1–2 orders of magnitude smaller. In addition, thermodynamic stability is highly nonlinear in ΔH_d around zero, as negative values indicate stable compounds, whereas positive values are unstable or metastable compounds.

Although ΔH_d determines stability, the standard thermodynamic property that is predicted by ML models is the absolute ΔH_f ^{20–29}. This is in large part because ΔH_f is intrinsic to a given compound, whereas ΔH_d inherently depends upon a compound’s stability relative to neighboring compositions, making ΔH_d less robust to learn directly.

Using data available in the Materials Project (MP)¹⁶, we applied the convex hull construction to obtain ΔH_d for 85,014 inorganic crystalline solids (the majority of which are in the ICSD) and compare ΔH_d with ΔH_f in Fig. 1b. It is clear that effectively no linear correlation exists between ΔH_d and ΔH_f , except for the trivial case where only a single compound exists in a chemical space ($\Delta H_d = \Delta H_f$), which is true for only ~3% of materials in MP. While ΔH_f somewhat uniformly spans a wide range of energies (mean \pm average absolute deviation = -1.42 ± 0.95 eV/atom), ΔH_d spans much smaller energies (0.06 ± 0.12 eV/atom), suggesting ΔH_d is the more sensitive or subtle quantity to predict (histograms of ΔH_f and ΔH_d are provided in Fig. 1b). Still, while no linear correlation exists between ΔH_d and ΔH_f , and ΔH_d occurs over a much smaller energy range, it would be possible for ΔH_f models to predict ΔH_d

as long as the relative differences in ΔH_f within a given chemical space are predicted with accuracy comparable with the range of variation in ΔH_d or if they would benefit from substantial error cancellation when comparing the energies of compounds with similar chemistry.

Learning formation energy from chemical composition

ML material properties requires that an arbitrary material is “represented” by a set of attributes (features). This representation can be as simple as a vector corresponding to the fractional amount of each element in the compound (e.g., $\text{Li}_2\text{O} = [0, 0, 2/3, 0, 0, 0, 0, 1/3, 0, 0, \dots]$, where the length of the vector is the number of elements in the periodic table), or a vector that includes substantial physical or chemical information about the material. In the search for new materials, the structure is rarely known a priori, and instead a list of compositions with unknown structure is screened for stability, i.e., the possibility that a thermodynamically stable structure exists at that composition. In this case, the material representation is constructed only from the chemical formula without including properties such as the geometric (i.e., lattice and basis) or electronic structure. These models, which take as input the chemical formula and output thermodynamic predictions, are henceforth referred to as compositional models here.

In this work, we assessed the potential for five recently introduced compositional representations—*Meredig*²⁰, *Magpie*²¹, *AutoMat*²², *ElemNet*²³, and *Roost*²⁴—to predict the stability of compounds in MP. *Meredig*, *Magpie*, and *AutoMat* include chemical information for each element in their material representations from quantities such as atomic electronegativities, radii, and elemental group. Each of these compositional representations were trained using gradient-boosted regression trees (XGBoost³⁰). *ElemNet* and *Roost* differ in that no a priori information other than the stoichiometry is used as input. For *ElemNet*, a deep learning architecture maps the stoichiometry input into formation energy predictions. For *Roost*, the stoichiometric representation and fit are simultaneously learned using a graph neural network. In addition, we included a baseline representation for comparison, *ElFrac*, where the representation is simply the stoichiometric fraction of each element in the formula, trained using XGBoost³⁰. Because compositional models necessarily make the same prediction for all structures having the same formula, all analysis in this work was performed using the lowest energy (ground-state) structure in MP for each available composition. Additional details on the training of each model and the MP dataset is available in the “Methods” section.

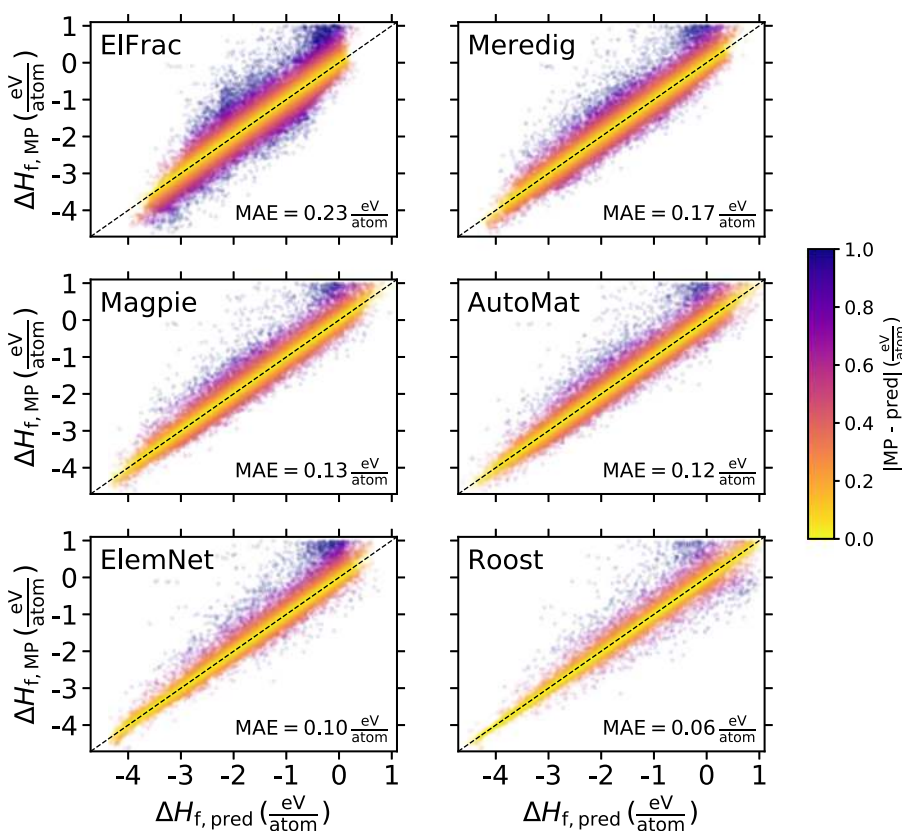


Fig. 2 Performance of machine-learned models for formation energy. Parity plot for formation enthalpy predictions using six different machine learning models that take as input the chemical formula and output ΔH_f . *ElFrac* refers to a baseline representation that parametrizes each formula only by the stoichiometric coefficient of each element. *Meredig*, *Magpie*, *ElemNet*, and *Roost* refer to the representations published in refs. ^{20–24}, respectively. $\Delta H_{f,\text{pred}}$ corresponds with ML predictions for aggregated hold-out sets during five-fold cross-validation of the Materials Project dataset (see “Methods” for details). $\Delta H_{f,\text{MP}}$ refers to the formation energy per atom in the MP database. The absolute error on ΔH_f is shown as the colorbar and the mean absolute error (MAE) is shown within each panel.

Parity plots comparing ΔH_f in MP ($\Delta H_{f,\text{MP}}$) to machine-learned ΔH_f ($\Delta H_{f,\text{pred}}$) for each model are shown in Fig. 2. It is clear that each published representation substantially improves upon the baseline *ElFrac* model, decreasing the mean absolute error (MAE) by 27–74%. This increased accuracy is attributed to the increased complexity of the representation. For most models, the MAE between MP and these ML models is comparable with the expected numerical disagreement between MP and experimentally obtained ΔH_f ^{8,16,31–33}, implying a substantial amount of the information required to determine ΔH_f is contained in the composition (and not the structure). The success of ML models for predicting ΔH_f is not surprising considering the historical context of simple heuristics that perform relatively well at predicting the driving force for the formation of compounds from elements—e.g., the Miedema model³⁴.

Implicit stability predictions from learned formation enthalpies While the MAE of the ML-predicted ΔH_f approaches the MAE between DFT and experiment for this quantity ($\sim 0.1\text{--}0.2$ eV/atom)^{8,16,31,32,35}, the use of ΔH_f for stability predictions requires that the relative ΔH_f between chemically similar compounds is predicted more accurately. To assess the accuracy of the relative ΔH_f we reconstructed, for each ML model, the convex hulls for all chemical spaces using $\Delta H_{f,\text{pred}}$. Parity plots for ΔH_d are shown in Fig. 3. Even though the quantity ΔH_d is on average much smaller than ΔH_f , the MAE in predicting it is almost identical to the error in predicting ΔH_f (Fig. 2), indicating very little error cancellation for the ML models when energy differences are taken in a chemical space, which is in contrast to the beneficial error cancellation for

stability predictions with DFT^{15,16}. In contrast to ΔH_f , where all representations substantially improve the predictive accuracy from the baseline *ElFrac* model, for ΔH_d , four of the five models (all except *Roost*) only negligibly improve upon the baseline model with MAE of $\sim 0.10\text{--}0.14$ eV/atom. Importantly, for the purposes of predicting stability, a difference of ~ 0.1 eV/atom can be the difference between a compound that is readily synthesizable and one that is unlikely to ever be realized^{36,37}.

DFT calculations benefit from a systematic cancellation of errors that leads to much smaller errors for ΔH_d than for ΔH_f , with MAE for ΔH_d as low as ~ 0.04 eV/atom for a substantial fraction of decomposition reactions¹⁶. Unfortunately, ML models do not similarly benefit from this cancellation of errors and instead appear to learn clusters in material space that have similar ΔH_f , but they are generally unable to distinguish between stable and unstable compounds within a chemical space. It is notable that *Roost* substantially improves upon the other models. However, there are still strong signatures of inaccurate stability predictions in its parity plot (Fig. 3), most notably in the \sim vertical line at $\Delta H_{d,\text{pred}} = 0$ and \sim horizontal line at $\Delta H_{d,\text{MP}} = 0$. These two lines indicate substantial disagreement between the actual and predicted stabilities for many compounds, despite the relatively low MAE.

The inability for compositional models to properly distinguish relative stability is further demonstrated by assessing how well the models classify compounds as stable (on the convex hull) or unstable (above the hull), as shown in Fig. 4. Overall, 60% of the compounds in the MP dataset are not on the hull, so the classification accuracy of a naive model that states that everything is unstable would be 60%. Five of the six models (all except *Roost*)

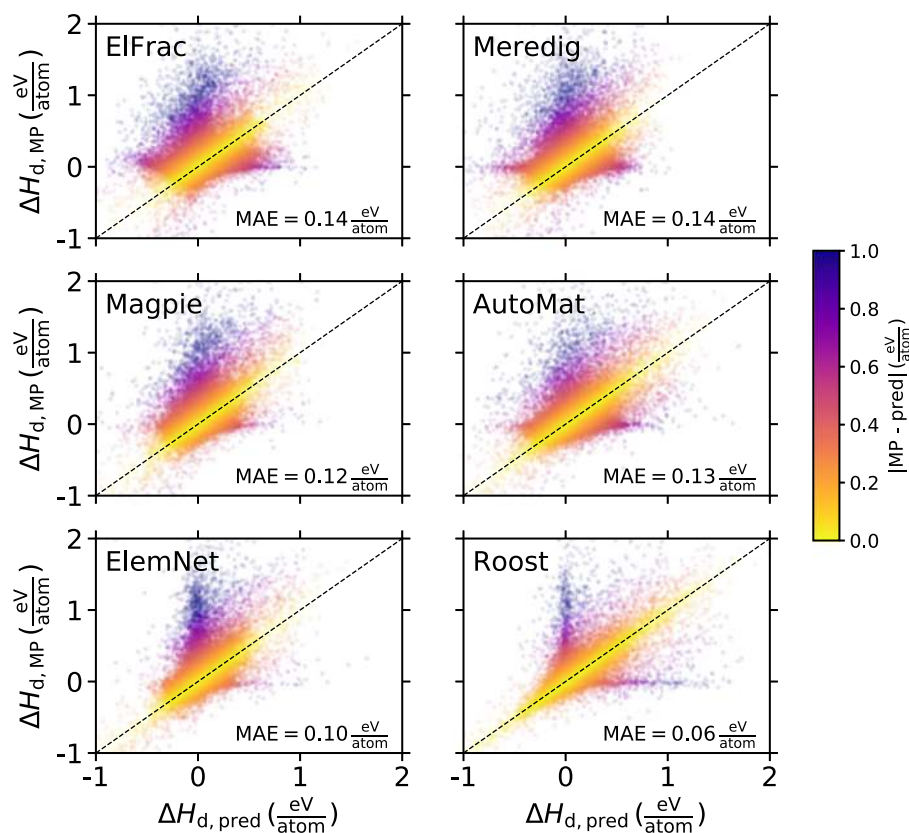


Fig. 3 Application of predicted formation energies to decomposition energies. Parity plot for decomposition enthalpy predictions. $\Delta H_{d,MP}$ results from convex hulls constructed with $\Delta H_{f,MP}$ (Fig. 2). $\Delta H_{d,pred}$ is obtained from convex hulls constructed with $\Delta H_{f,pred}$ (Fig. 2). The annotations are the same as in Fig. 2.

only marginally improve upon this extremely naive model accuracy (58–65%). Strikingly, *Roost* considerably outperforms the other compositional models (76% accuracy), despite using stoichiometry alone as input. Plausibly, this superior performance is due to the use of weighted soft attention mechanisms during training of the representation³⁸. Although only the nominal chemical composition (elemental fraction) is used as input, the model learns a more meaningful representation of this input composition on a case-by-case basis during training. This is in contrast to the other compositional models, which have fixed stoichiometric representations and either include hand-picked elemental attributes such as electronegativity (*Meredig* and *Magpie*) or use deep learning (*ElemNet*). Notably, *AutoMat* uses a two-step process: first it rationally selects the most relevant elemental attributes from a large list using a decision tree model and then fits a regression model with the reduced feature space. Considering the modest classification accuracy by *AutoMat* (65%), despite the wide range of elemental attributes considered in its optimization, we speculate that further improvements in the clever selection of these attributes is unlikely to lead to transformative improvements in predicted stabilities. Instead, major improvements to compositional formation energy models will likely result from qualitative changes in model architecture, as in *Roost*, and not from optimizing the selection of elemental attributes.

While *Roost* improves considerably upon other compositional models, the accuracy, F_1 score, and false positive rate taken together do not inspire much confidence that any of these models can accurately predict the stability of solid-state materials (Fig. 4). Of particular concern is the high false positive rates of 25–38%. This metric provides the likelihood that a compound predicted to be stable will not actually be. Further aggravating this situation is

that the false positive rate reported here for the models is greatly underestimated compared with the false positive rate that is expected for new materials discovery. The MP database is largely populated with known materials extracted from the ICSD, and this results in ~40% of the entries in MP being on the hull. The fraction of all conceivable hypothetical materials (from which new materials will be discovered) that are stable is likely several orders of magnitude lower than 40%. This necessitates that searches for new materials cover a huge number of possible compounds, and false positive rates in excess of 25% would lead to an enormous amount of predicted materials which are not stable, limiting the ability for these ML models to efficiently accelerate new materials discovery.

A key consideration when discussing the accuracy in classifying compounds as stable or unstable is the choice of threshold for stability, which we have chosen to be $\Delta H_d = 0$. In materials discovery or screening applications, compounds are often considered potentially synthesizable even for $\Delta H_d > 0$ to consider potential inaccuracies in the predicted stabilities and account for a range of accessible metastability^{36,37}. To probe the effects of moving this threshold for stability to higher or lower values of ΔH_d , we show the receiver operating characteristic curves for each model in Supplementary Fig. 1. As the threshold for stability moves to larger positive values, increases in model accuracy are concomitant with an increase in the rate of false positives and a decrease in the confidence that the compounds predicted to be stable are actually accessible. Conversely, as the threshold decreases below zero, the accuracy and false positive rate decrease together as less and less compounds meet this stricter threshold for stability. Ultimately, the conclusions we draw from setting a stability threshold of $\Delta H_d = 0$ are not affected by alternative stability thresholds.

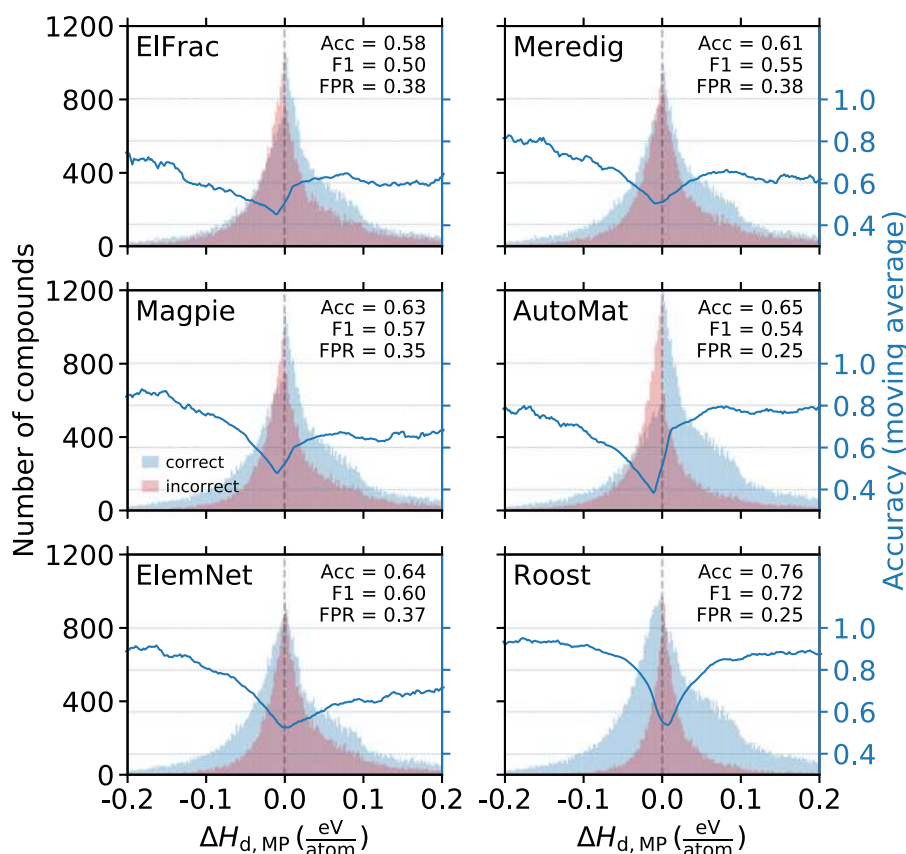


Fig. 4 Performance of predicted formation energies on stability classification. Classification of materials as stable ($\Delta H_d \leq 0$) or unstable ($\Delta H_d > 0$) using each of the six compositional models. “Correct” predictions are those for which the ML models and MP both predict a given material to be either stable or unstable. The histograms are binned every 5 meV/atom with respect to $\Delta H_{d,MP}$ to indicate how the correct and incorrect predictions and the number of compounds in our dataset vary as a function of the magnitude above or below the convex hull. Acc is the classification accuracy. F1 is the harmonic mean of precision and recall. FPR is the false positive rate. The moving average of the accuracy (computed within 20 meV/atom intervals) as a function of $\Delta H_{d,MP}$ is shown as a blue line (right axis). As expected, the accuracy is lowest near the chosen stability threshold of $\Delta H_{d,MP} = 0$.

Predicting stability in sparse chemical spaces

While quantifying the accuracy of ML approaches on the entire MP dataset is instructive, it does not resemble the materials discovery problem because it assesses only the limited space of compositions that have been previously explored and therefore have many stable compounds. In order to simulate a realistic materials discovery problem, we identified a set of chemical spaces within the MP dataset that are sparse in terms of stable compounds. Lithium transition metal (TM) oxides are used as the cathode material for rechargeable Li-ion batteries and have attracted substantial attention for materials discovery in recent years. In particular, Li–Mn oxides have been considered as an alternative to LiCoO_2 utilizing less or no cobalt: e.g., spinel LiMn_2O_4 ³⁹, layered LiMnO_2 ⁴⁰, nickel–manganese–cobalt cathodes⁴¹, and disordered rock salt cathodes⁴². For this work, the quaternary space, Li–Mn–TM–O with $\text{TM} \in \{\text{Ti}, \text{V}, \text{Cr}, \text{Fe}, \text{Co}, \text{Ni}, \text{Cu}\}$, is an attractive space to test the efficacy of these models, as it contains only 9 stable compounds and 258 more that are unstable in MP. We tested the potential for ML models to discover these stable compounds by excluding all 267 quaternary Li–Mn–TM–O compounds from the MP dataset and repeating the training of each model on ΔH_f with the remaining 84,747 compounds. We then applied each trained model to predict ΔH_f for the excluded Li–Mn–TM–O compounds and assessed their stability. Importantly, we are again concerned with DFT-calculated stability at 0 K, so we are not considering the potential for compounds in this quaternary space to be stabilized due to entropic effects (e.g., configurational disorder).

The ΔH_f parity plot for these 267 Li–Mn–TM–O compounds is shown in Supplementary Fig. 2 and reveals that all models have a higher accuracy predicting ΔH_f for this subset of materials than for the entire dataset (Fig. 3). The improved prediction of ΔH_f is likely because the compounds in this subset have strongly negative ΔH_f and are well represented by the thousands of TM and lithium-containing oxides that comprise the MP dataset. Despite this improved accuracy on ΔH_f , the models all have alarmingly poor performance in predicting ΔH_d . In Fig. 5, we show that none of the models are able to correctly detect more than three of the nine stable compounds, and even for the most successful model by this metric (*AutoMat*), the 3 true positives come with 24 false positives. It is noteworthy that in this experiment, the models are given a large head-start towards making these predictions because the composition space under investigation is restricted to those compounds that have DFT calculations tabulated in MP, which is biased towards stability compared with the space of all possible hypothetical compounds.

To account for the MP stability bias and more closely simulate a realistic materials discovery problem, we assessed the potential for these models to identify the nine stable MP compounds when considering a much larger composition space. Using the approach defined in ref.¹⁴ we produced 13,392 additional quaternary compounds in these 7 Li–Mn–TM–O chemical spaces that obey simple electronegativity- and charge-based rules. For this expanded space of quaternary compounds, we used each compositional model (trained on all of MP minus the 267 Li–Mn–TM–O compounds) to predict ΔH_f and assessed their

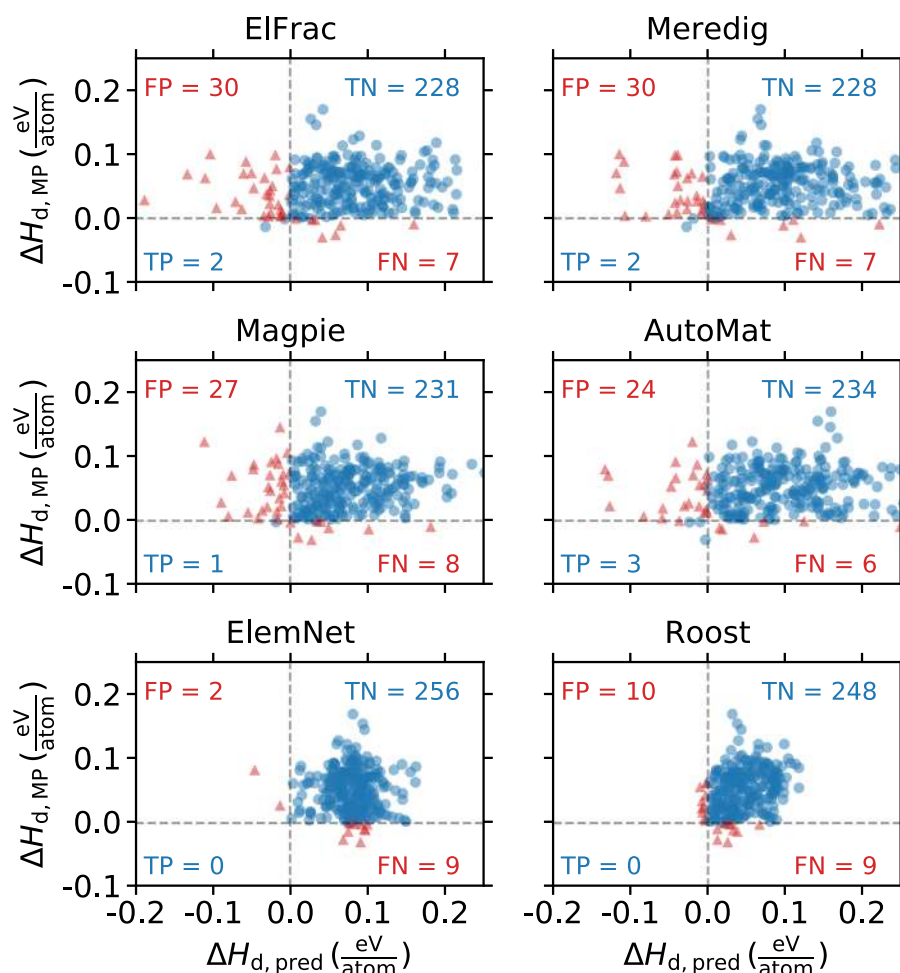


Fig. 5 Applying predicted formation energies to stability predictions in a sparse chemical space. Re-training each model on all of MP minus 267 quaternary compounds in the Li–Mn–TM–O chemical space (TM ∈ {Ti, V, Cr, Fe, Co, Ni, Cu}) and obtaining ΔH_d using the predicted ΔH_f for each of the excluded compounds ($\Delta H_{d, \text{pred}}$) and comparing with stabilities available in MP, $\Delta H_{d, \text{MP}}$. FP = false positive, TP = true positive, TN = true negative, FN = false negative.

Table 1. Stability predictions in the expanded Li–Mn–TM–O (TM ∈ {Ti, V, Cr, Fe, Co, Ni, Cu}) composition space.

	ElFrac	Meredig	Magpie	AutoMat	ElemNet	Roost
Candidate compounds	13,659	13,659	13,659	13,659	13,659	13,659
Stable compounds in MP	9	9	9	9	9	9
Compounds predicted stable	685	528	619	541	556	507
% predicted stable	5.0	3.9	4.5	4.0	4.1	3.7
Pred. stable and stable in MP	1	1	1	1	2	1

Candidate compounds were generated by combining all quaternary MP compounds in this space along with quaternary compounds generated by the approach described in ref. ¹⁴, resulting in 13,659 candidates. Among these candidates, nine compounds are calculated to be stable in MP. The stability of all candidates was assessed using each compositional model for ΔH_f . Note that while all models correctly predict one of nine MP-stable compounds to be stable, this compound is not the same for all models.

stability (Table 1). The compositional models each predict ~4–5% of these compounds to be stable, and all of the models fail to accurately predict the stability of more than two of the nine compounds that are actually stable in MP. A remarkable 139 compounds are predicted to be stable by all six models and 1372 unique compounds are predicted to be stable by at least one model. While it is likely that the space of stable quaternary compounds in the Li–Mn–TM–O space has not yet been fully explored in MP (or by extension, the ICSD), our intuition suggests it is highly unlikely that the number of new stable materials in this

well-studied space is orders of magnitude larger than the number of known stable materials. The false positive rates obtained on the entire MP dataset shown in Fig. 4 suggest ~25–38% of these predicted stable Li–Mn–TM–O compounds are not actually stable, and these rates are likely underestimated, as discussed previously. The magnitude of compounds predicted to be stable by the ML models, and their false positive rates, imply that these models will inevitably identify a large number of unstable materials as candidates for further analysis (either with DFT calculations or experimental synthesis). This substantially impedes the capability

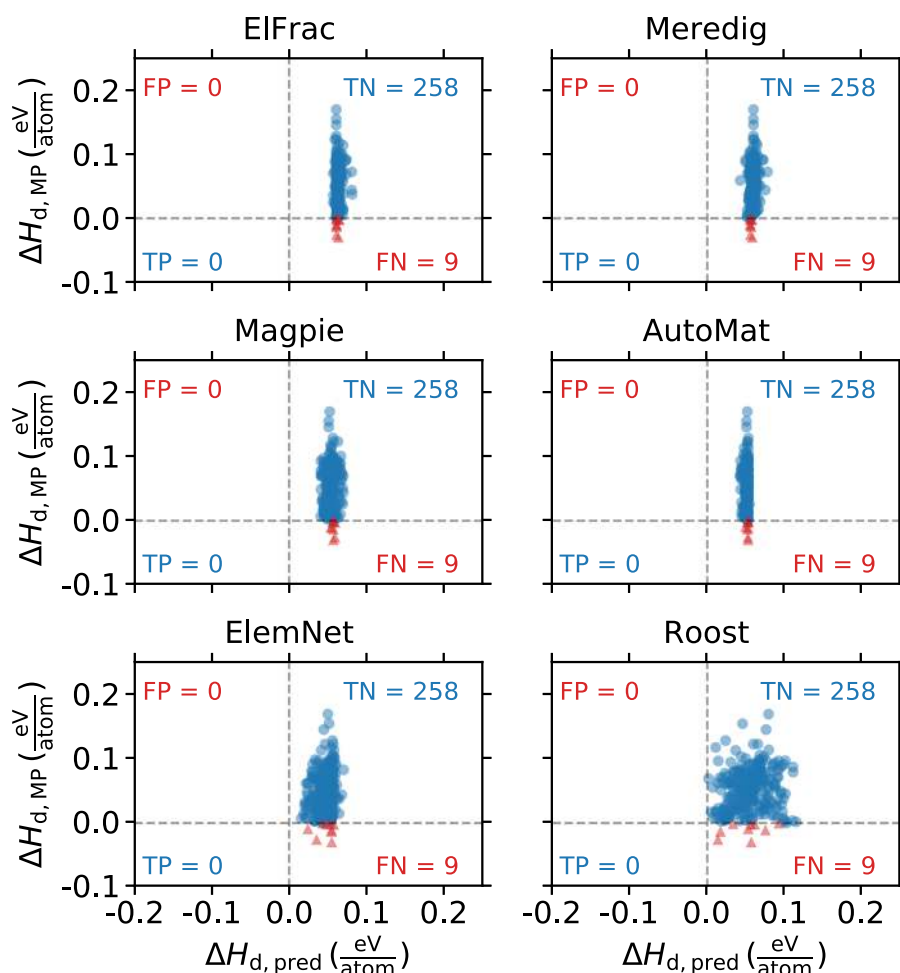


Fig. 6 Applying predicted decomposition energies to stability predictions in a sparse chemical space. Re-training each model directly on ΔH_d on all of MP minus 267 quaternary compounds in the Li–Mn–TM–O chemical space (TM \in {Ti, V, Cr, Fe, Co, Ni, Cu}). Stability is determined by these direct predictions of $\Delta H_{d,\text{pred}}$ and compared with stabilities available in MP, $\Delta H_{d,\text{MP}}$. FP = false positive, TP = true positive, TN = true negative, FN = false negative.

of these formation energy models to accelerate the discovery of novel compounds that can be synthesized.

Direct training on decomposition energy

An alternative approach to consider is to train directly on ΔH_d instead of using ML-predicted ΔH_f to obtain ΔH_d through the convex hull construction. Note that direct training on ΔH_d is complicated by the fact that ΔH_d for a given compound is dependent upon ΔH_f for other compounds within a given chemical space. This is unlike ΔH_f , which is intrinsic to a single compound. To assess the capability of each representation to directly predict stability, we repeated the analysis shown in Figs. 3–5 and Table 1 but training on ΔH_d . The performance of each model on the MP Li–Mn–TM–O dataset is shown in Fig. 6, the performance on the expanded Li–Mn–TM–O space in Supplementary Table 1, and results for ΔH_d on the entire MP dataset are shown in Supplementary Figs. 3 and 4. While the prediction accuracy (MAE and stability classification) on the entire MP dataset is typically comparable with or slightly better when training on ΔH_d (Supplementary Figs. 3 and 4) instead of ΔH_f (Figs. 3 and 4), the capability of the trained model to predict stability in sparse chemical spaces is even worse than when training on ΔH_f (Fig. 6 and Supplementary Table 1).

None of the models are able to identify even one of the nine MP-stable quaternary compounds from the set of 267

Li–Mn–TM–O compounds in MP, and every model predicts all 267 Li–Mn–TM–O compounds to be unstable (Fig. 6). It is especially notable that for all models except *Roost* and *ElemNet*, the predictions for all 267 quaternary compounds fall in a very small window ($0.040 \text{ eV/atom} < \Delta H_{d,\text{pred}} < 0.082 \text{ eV/atom}$), suggesting the models only learn that all compounds in this space should be within the vicinity of the convex hull and do nothing to distinguish between chemically similar compounds. When the space of potential compounds is expanded to 13,659 compounds, only *Roost* and *ElemNet* predict any compound to be stable, but again, none of the nine MP-stable compounds are predicted to be stable by any model (Supplementary Table 1).

As an additional demonstration, all representations (except *Roost*—see “Methods” for details) were also trained as classifiers (instead of regressors), tasked with predicting whether a given compound is stable ($\Delta H_d \leq 0$) or unstable ($\Delta H_d > 0$). The accuracies, F_1 scores, and false positive rates are tabulated in Supplementary Table 2 and found to be only slightly better (accuracies $< 80\%$, F_1 scores < 0.75 , false positive rates > 0.15) than those obtained by training on ΔH_f (Fig. 4) or ΔH_d (Supplementary Fig. 4).

Beyond the poor performance associated with these models, the direct prediction of ΔH_d (or classification of stable/unstable) is difficult to physically motivate because unlike ΔH_f , ΔH_d is not an intrinsic property of a material but depends on the energy at other compositions with which it may be in competition. This

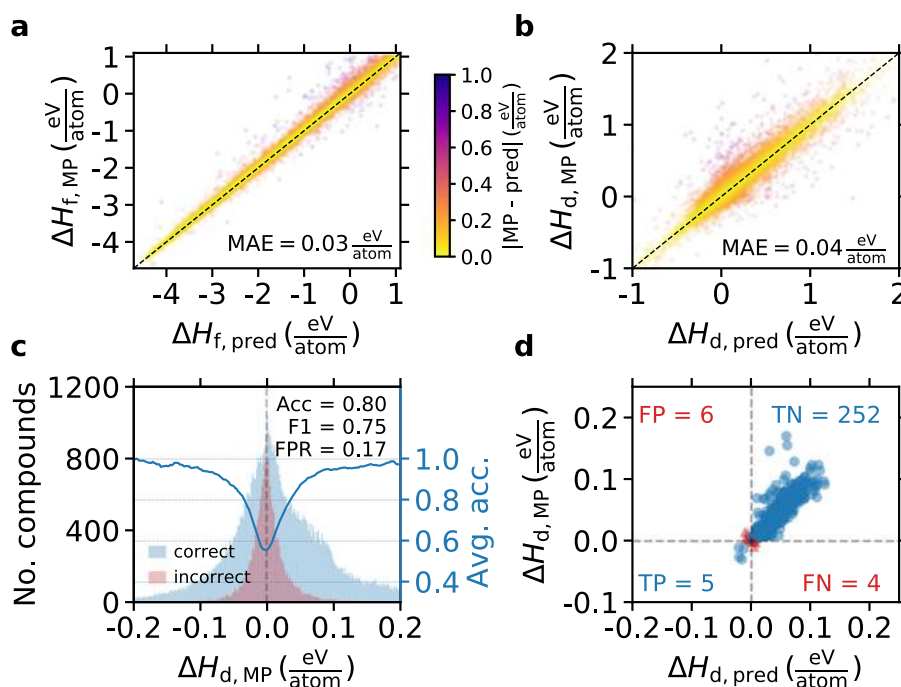


Fig. 7 Performance of formation energies predicted using a structural representation. **a** Repeating the analysis shown in Fig. 2 using CGCNN. Annotations are as in Fig. 2. **b** Repeating the analysis shown in Fig. 3 using CGCNN. Annotations are as in Fig. 3. **c** Repeating the analysis shown in Fig. 4 using CGCNN. Annotations are as in Fig. 4. **d** Repeating the analysis shown in Fig. 5 using CGCNN. Annotations are as in Fig. 5.

nonlocality of ΔH_d also depends on the completeness of a given phase diagram: as new materials are discovered in a chemical space, ΔH_d is subject to change for any compound in that space, even if that compound's energy itself does not change, complicating the application of ML models trained on ΔH_d .

Revisiting stability predictions with a structural representation

In addition to compositional models, representations that rely on the crystal structure for predicting formation energy have also received substantial attention in recent years^{25,27–29,43–45}. These models perform a different task than compositional models because they evaluate the property of a material given both the composition and the structure. Nevertheless, it is interesting to assess whether these structural models can predict stability with improved accuracy relative to models that are given only composition.

Here we take the crystal graph convolutional neural network (CGCNN)²⁵ as a representative example of existing structural models. CGCNN is a flexible framework that uses message passing over the atoms and bonds of a crystal (see “Methods” for training details). In Fig. 7, we show the performance of CGCNN on the same set of analyses as were shown for the compositional models in Figs. 2–5: learning ΔH_f (Fig. 7a), constructing convex hulls with those predicted ΔH_f to generate ΔH_d (Fig. 7b), assessing the capability of these $\Delta H_{d,pred}$ values to classify materials as stable or unstable (Fig. 7c), and probing the ability for this model to predict stability in the sparse Li–Mn–TM–O space (Fig. 7d). It is clear that CGCNN improves substantially upon the direct prediction of ΔH_f (Fig. 7a) and the implicit prediction of ΔH_d (Fig. 7b), reducing the MAE by ~50% compared with the best performing compositional model (*Roost*). The extremely inaccurate predictions of ΔH_d near $\Delta H_{d,pred} = 0$ or $\Delta H_{d,MP} = 0$ that are observed in Fig. 3 for most compositional models are also no longer present with CGCNN (Fig. 7b). CGCNN displays an improved classification accuracy (80%) and a narrow distribution of incorrect stability predictions, only disagreeing with MP regarding the stability of compounds

within the vicinity of $\Delta H_{d,MP} = 0$ (Fig. 7c). Most impressively, CGCNN is relatively successful at finding the needles in the excluded Li–Mn–TM–O haystack, recovering five of the nine stable compounds with only six false positives (Fig. 7d). In addition to the improved predictive accuracy, the parity plot for this excluded set looks fundamentally different than for the compositional models. In the compositional models (Fig. 5), the parity plot is scattered, and there is effectively no linear correlation between the actual and predicted ΔH_d , whereas for CGCNN, there is a strong linear correlation (Fig. 7d).

The nonincremental improvement in stability predictions that arises from including structure in the representation is a strong endorsement for structural models and also sheds insight into the structural origins of material stability. While the thermodynamic driving force for forming a compound from its elements (formation energy) can be learned with high accuracy from only the composition, the structure dictates the subtle differences in thermodynamic driving force between chemically similar compounds and enables accurate ML predictions of material stability (decomposition energy). However, the obvious limitation of this approach is that it requires the structure as input, and the structure of new materials that are yet to be discovered is not known *a priori*. For example, because we do not know the ground-state structure for an arbitrary composition, we cannot repeat the test where we assess the ability of the ML model to find the stable Li–Mn–TM–O compounds among a large set of candidate compositions. Although CGCNN shows substantially improved performance in predicting material stability, these results are obtained using the DFT-optimized ground-state crystal structures as input.

Quantifying error cancellation in ML models

While it is well known that DFT predictions of stability are enhanced because of systematic error cancellation^{15,16}, it is not yet known if the errors made by ML formation energy models are completely random or if they too exhibit some beneficial

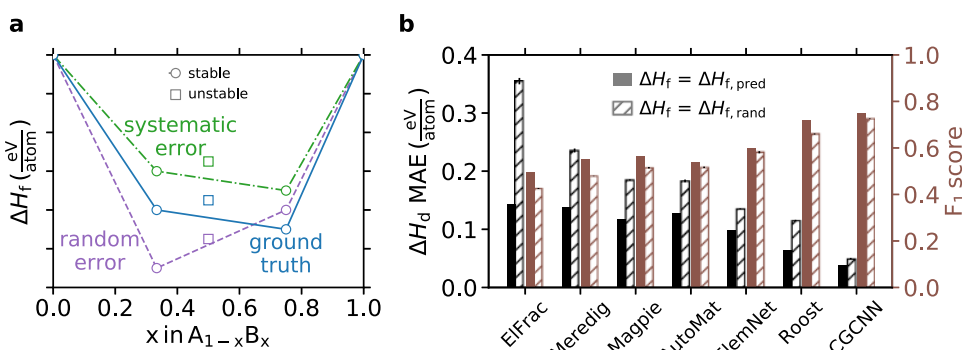


Fig. 8 Error cancellation in formation energy predictions. **a** Schematic illustration contrasting how random and systematic errors on ΔH_f of the same average magnitude manifest as larger and smaller errors on predicted ground-state lines (ΔH_d). **b** Comparing the performance on stability predictions using ML-predicted ΔH_f ($\Delta H_{f,\text{pred}}$, filled bars) and ΔH_f with perturbations drawn randomly from the distribution of $\Delta H_{f,\text{pred}}$ errors ($\Delta H_{f,\text{rand}} = \Delta H_{f,\text{MP}} + P[\Delta H_{f,\text{MP}} - \Delta H_{f,\text{pred}}]$, hatched bars). The mean absolute error (MAE) on ΔH_d is shown by the black bars (left axis). The F_1 score for classifying compounds as stable ($\Delta H_d \leq 0$) or unstable ($\Delta H_d > 0$) is shown by the brown bars (right axis). The results for the randomly perturbed case are averaged over three random samples with the standard deviation shown as an error bar. The standard deviation is too small to see in most cases.

cancellation of errors. In Fig. 8a, we plot a hypothetical convex hull phase diagram in blue, labeled “ground truth.” Next, we represent the effect of a systematic error in ΔH_f by shifting all points up in energy by the same amount (“systematic error,” green). The relative stabilities of these systematically shifted points remain comparable with the ground truth despite the error in each ΔH_f , illustrating beneficial cancellation of errors. Finally, we show the effect of a random ΔH_f error by shifting the ground truth ΔH_f by the same average magnitude as in the “systematic” case, but here in random amounts for each point (purple, “random error”). In this case, stabilities (ΔH_d) for all points deviate substantially from the ground truth because there is little beneficial cancellation of ΔH_f errors.

The similar MAE on ΔH_f (Figs. 2 and 7a) and ΔH_d (Figs. 3 and 7b) for all models despite the much smaller range of energies spanned by ΔH_d (Fig. 1b) make clear that the benefit of error cancellation is not fully realized for the ML models. Further, the set of tests on stability predictions discussed in this work (Figs. 4–6 and Table 1) show that the magnitude of error cancellation made by the compositional ML models remains insufficient to enable accurate stability predictions, especially in sparse chemical spaces. It is not clear, however, whether the improved prediction of stability by *CGCNN* arises from beneficial error cancellation within each chemical space or from decreasing the overall MAE from ~ 0.06 eV/atom (for the best performing compositional model—*Roost*) to ~ 0.03 eV/atom (for *CGCNN*).

To quantify the magnitude of error cancellation for the ML models, it is essential to establish a “random error” baseline for comparison. The random error baseline developed in this work utilizes random perturbations of the ground truth ΔH_f ($\Delta H_{f,\text{MP}}$), where the perturbations were drawn from the discrete distribution of ML errors, $P[\Delta H_{f,\text{MP}} - \Delta H_{f,\text{pred}}]$, for each model. It follows that $\Delta H_{f,\text{rand}} = \Delta H_{f,\text{MP}} + P[\Delta H_{f,\text{MP}} - \Delta H_{f,\text{pred}}]$ ($\Delta H_{f,\text{pred}}$ is shown for each compositional model in Fig. 2 and for *CGCNN* in Fig. 7a). With these randomly perturbed $\Delta H_{f,\text{rand}}$, we repeated the convex hull construction for all compounds in MP for comparison with the analysis of ΔH_d presented in Fig. 3 and stability classification presented in Fig. 4 (both of which rely on $\Delta H_{f,\text{pred}}$). In Fig. 8b, the MAEs on ΔH_d and F_1 scores for classifying compounds as stable ($\Delta H_d \leq 0$) or unstable ($\Delta H_d > 0$) are compared for predictions based on $\Delta H_{f,\text{pred}}$ and $\Delta H_{f,\text{rand}}$ for all seven models. All models show higher MAE on ΔH_d and lower F_1 scores using $\Delta H_{f,\text{rand}}$ instead of $\Delta H_{f,\text{pred}}$ as input, demonstrating that the ML models do generally exhibit some degree of error cancellation.

The extent of error cancellation is model-dependent, and the worst-performing model in this work, *ElFrac*, exhibits the most substantial relative error cancellation, with 148% higher MAE on ΔH_d

and 14% lower F_1 when using $\Delta H_{f,\text{rand}}$ instead of $\Delta H_{f,\text{pred}}$. For *ElFrac* (and to a lesser extent the other modestly performing compositional models), the high error cancellation likely arises because of the wide distribution of predicted ΔH_f ($P[\Delta H_{f,\text{MP}} - \Delta H_{f,\text{pred}}]$), which drives up the error of the random error baseline dramatically. *Roost* is remarkably shown to have considerable error cancellation (80% higher MAE on ΔH_d using $\Delta H_{f,\text{rand}}$) despite the MAE on ΔH_d using $\Delta H_{f,\text{rand}}$ already being competitive with the actual predictions (ΔH_d using $\Delta H_{f,\text{pred}}$) made by the other compositional models.

However, we emphasize that even benefiting from this substantial error cancellation, *Roost* is not able to detect the stability of compounds in sparse chemical spaces (as shown in Fig. 5). The only model that performs suitably at this task is the structural representation, *CGCNN* (Fig. 7d), and this model exhibits a much smaller degree of error cancellation (MAE on ΔH_d increased by 26% and F_1 decreased by 3% using $\Delta H_{f,\text{rand}}$). Because $\Delta H_{f,\text{pred}}$ for *CGCNN* is sufficiently accurate (MAE on $\Delta H_f = 34$ meV/atom), the lack of error cancellation does not have a deleterious effect on stability predictions.

DISCUSSION

There have been a number of recent successes in the application of ML for materials design problems. These models have given the impression that ML can predict formation energies with near-DFT accuracy^{20,23,46}. However, the critical question of whether this implies that compound stability can be predicted by ML has not been rigorously assessed. In this work, we show that while indeed existing ML models can predict ΔH_f with relatively high accuracy from the chemical formula, they are insufficient to accurately distinguish stable from unstable compounds within an arbitrary chemical space. The error in predicting DFT-calculated ΔH_f by ML models is often compared favorably with the error DFT makes in predicting ΔH_f relative to experimentally obtained values. This comparison neglects the fact that the errors in DFT-calculated ΔH_f are beneficially systematic, whereas the errors made by the ML models are not. For DFT calculations, this leads to substantially lower errors for stability predictions (ΔH_d) than for ΔH_f . A similarly beneficial cancellation of errors does not occur for ML models and the errors in ΔH_d are comparable with ΔH_f , inhibiting accurate predictions of material stability. Hence, while the claim that ML-predicted formation energies have similar errors as DFT compared with experiment is technically correct, it does not imply that in their current state ML models are as useful as DFT, or that ML can replace DFT for the computationally guided discovery of novel compounds. As new ML models for formation energy are

developed, it is imperative to assess their viability as inputs for stability predictions and, most critically, for problems that resemble how the models would be implemented to address emerging materials design problems. In this work, we present a set of tests that facilitate this assessment and allow for direct comparison with existing ML models. All data and code required to repeat this set of stability analyses for the models shown in this work or any new model are available at <https://github.com/CJBartel/TestStabilityML>.

METHODS

Materials project data

All entries in the MP⁹ database with $\Delta H_f < 1$ eV/atom were queried on July 26, 2019 using the MP API⁴⁷. This produced 85,014 unique nonelemental chemical formulas. For each chemical formula, we obtained the formation energy per atom, ΔH_f , for all structures having that formula, and used the most negative (ground-state) ΔH_f for training the models and obtaining ΔH_d by the convex hull construction. MP applies a correction scheme to improve the agreement between DFT-calculated thermodynamic properties (ΔH_f and ΔH_d) and experiment^{15,48,49}. Additional details on the MP calculation procedure can be found at <https://materialsproject.org/docs/calculations>.

Although the MP database contains a wide range of inorganic crystalline solids, it is an evolving resource that periodically includes more and more compounds as they are discovered or calculated by the community. As such, the calculated ΔH_d that were used for training and testing each model are subject to change over time as new stable materials are added to the database. This fact is not unique to MP and is inherent in all open materials databases that would be considered for training and evaluating ML models on large datasets of DFT calculations. The ΔH_d and ΔH_f used for all compounds in this work are available within <https://github.com/CJBartel/TestStabilityML>.

General training approach

Fivefold cross-validation was used to produce the model-predicted $\Delta H_{f,pred}$ shown in Fig. 2. Each predicted value corresponds with the prediction made on that compound when it was in the validation set (i.e., not used for training). $\Delta H_{f,pred}$ was then used in the convex hull analysis to generate $\Delta H_{d,pred}$ shown in Fig. 3, from which stability classifications were made as shown in Fig. 4. For the Li–Mn–TM–O examples (Fig. 5 and Table 1), each model was trained on all MP entries except those 267 quaternary compounds belonging to the Li–Mn–TM–O chemical spaces. An analogous approach was used when training on ΔH_d instead of ΔH_f to generate the results shown in Fig. 6, Supplementary Figs. 3 and 4, Supplementary Table 1, and Supplementary Table 2.

Compositional model training

Three of the compositional representations—*ElFrac*, *Meredig*²⁰, and *Magpie*²¹—were implemented using *matminer*⁵⁰ and trained using gradient boosting as implemented in XGBoost³⁰ with 200 trees and a maximum depth of 5. Preliminary tests showed XGBoost and these hyperparameters led to the highest accuracy of tested algorithms. *AutoMat*²² was used as implemented in ref. 22. *Roost*²⁴ was trained for 500 epochs using an Adam optimizer with an initial learning rate of 5×10^{-4} and an L_1 loss function. *ElemNet* was implemented as described in ref. 23 using the Keras ML framework⁵¹. *ElemNet* was trained using an initial learning rate of 10^{-4} with an Adam optimizer for 200 epochs. Overall, 10% of the input data was set aside for validation, and the model weights from the epoch with best loss on the validation set were used for predictions.

Regarding training each representation as a classifier, for *ElFrac*, *Meredig*, *Magpie*, and *AutoMat*, we used an XGBoost classifier with the same parameters as used for regression. For *ElemNet*, we added a sigmoid activation function to the output and used cross entropy loss for training. All other aspects of these models were identical to those trained for regression. *Roost* was excluded from the classification analysis as modifying this representation to perform classification required more extensive changes than for the other representations.

Learning curves for all compositional models trained on ΔH_f are provided in Supplementary Fig. 5 along with training and inference times in Supplementary Table 3. The code used to train and evaluate all models is available at <https://github.com/CJBartel/TestStabilityML>.

CGCNN training

We used a nested fivefold cross-validation to train the CGCNN²⁵ model for the MP ΔH_f dataset. As a general procedure for cross-validation, the dataset was split into five groups and each group was iteratively taken as a hold-out test set. For each fold, we split the training set to 75% training and 25% validation, thus the overall ratio of training, validation, and test was 60%, 20%, and 20%, respectively. The CGCNN model was iteratively updated by minimizing the loss (mean squared error) on the training set, and the validation score (MAE) was monitored after each epoch. After 1000 epochs, the model with the best validation score was selected and then evaluated on the hold-out test set. Results of the fivefold hold-out test sets were accumulated as the final predictions of the dataset.

For the Li–Mn–TM–O case in which the test set is defined, we split the remaining compounds into five groups and iteratively took each group as the validation set (20%) and the remaining as the training set (80%). The best CGCNN model of each fold was selected as the one with the best validation score (MAE). We then applied the 5 CGCNN models to the 267 Li–Mn–TM–O test compounds and used the average of the predicted ΔH_f for each model.

DATA AVAILABILITY

All data necessary for reproducing this work are freely available via the Materials Project database at <https://materialsproject.org>.

CODE AVAILABILITY

A public repository at <https://github.com/CJBartel/TestStabilityML> contains the following items: code for training each compositional model in this work, code for assessing the stability of compounds given predicted formation energies (for the models shown in this work or any new model), the formation and decomposition energy data for all models studied in this work, and code for generating all figures and tables in the main text and Supplementary Information.

Received: 28 January 2020; Accepted: 12 June 2020;

Published online: 10 July 2020

REFERENCES

- Himanan, L., Geurts, A., Foster, A. S. & Rinke, P. Data-driven materials science: status, challenges, and perspectives. *Adv. Sci.* **0**, 1900808 (2019).
- Schleder, G. R., Padilha, A. C. M., Acosta, C. M., Costa, M. & Fazzio, A. From DFT to machine learning: recent approaches to materials science—a review. *J. Phys.* **2**, 032001 (2019).
- Goldsmith, B. R., Esterhuizen, J., Liu, J.-X., Bartel, C. J. & Sutton, C. A. Machine learning for heterogeneous catalyst design and discovery. *AIChE-J.* **64**, 2311–2323 (2018).
- Butler, K. T., Davies, D. W., Cartwright, H., Isayev, O. & Walsh, A. Machine learning for molecular and materials science. *Nature* **559**, 547–555 (2018).
- Ramprasad, R., Batra, R., Pailania, G., Mannodi-Kanakkithodi, A. & Kim, C. Machine learning in materials informatics: recent applications and prospects. *npj Comput. Mater.* **3**, 54 (2017).
- Schmidt, J., Marques, M. R. G., Botti, S. & Marques, M. A. L. Recent advances and applications of machine learning in solid-state materials science. *npj Comput. Mater.* **5**, 83 (2019).
- Pizzi, G., Cepellotti, A., Sabatini, R., Marzari, N. & Kozinsky, B. AiiDA: automated interactive infrastructure and database for computational science. *Comput. Mater. Sci.* **111**, 218–230 (2016).
- Kirklin, S. et al. The Open Quantum Materials Database (OQMD): assessing the accuracy of DFT formation energies. *npj Comput. Mater.* **1**, 15010 (2015).
- Jain, A. et al. Commentary: the Materials Project: a materials genome approach to accelerating materials innovation. *APL Mater.* **1**, 011002 (2013).
- Draxl, C. & Scheffler, M. NOMAD: the FAIR concept for big data-driven materials science. *MRS Bull.* **43**, 676–682 (2018).
- Curtarolo, S. et al. AFLOW: an automatic framework for high-throughput materials discovery. *Comput. Mater. Sci.* **58**, 218–226 (2012).
- Choudhary, K., Kalish, I., Beams, R. & Tavazza, F. High-throughput identification and characterization of two-dimensional materials using density functional theory. *Sci. Rep.* **7**, 5179 (2017).
- Hellenbrandt, M. The Inorganic Crystal Structure Database (ICSD)—present and future. *Crystallogr. Rev.* **10**, 17–22 (2004).
- Davies, D. W. et al. Computational screening of all stoichiometric. *Inorg. Mater. Chem.* **1**, 617–627 (2016).

15. Hautier, G., Ong, S. P., Jain, A., Moore, C. J. & Ceder, G. Accuracy of binary functional theory in predicting formation energies of ternary oxides from density functionals and its implication on phase stability. *Phys. Rev. B* **85**, 155208 (2012).
16. Bartel, C. J., Weimer, A. W., Lany, S., Musgrave, C. B. & Holder, A. M. The role of decomposition reactions in assessing first-principles predictions of solid stability. *npj Comput. Mater.* **5**, 4 (2019).
17. Bartel, C. J. et al. Physical descriptor for the Gibbs energy of inorganic crystalline solids and temperature-dependent materials chemistry. *Nat. Commun.* **9**, 4168 (2018).
18. Ong, S. P., Wang, L., Kang, B. & Ceder, G. Li–Fe–P–O₂ phase diagram from first principles calculations. *Chem. Mater.* **20**, 1798–1807 (2008).
19. Zunger, A. Inverse design in search of materials with target functionalities. *Nat. Rev. Chem.* **2**, 0121 (2018).
20. Meredig, B. et al. Combinatorial screening for new materials in unconstrained composition space with machine learning. *Phys. Rev. B* **89**, 094104 (2014).
21. Ward, L., Agrawal, A., Choudhary, A. & Wolverton, C. A general-purpose machine learning framework for predicting properties of inorganic materials. *npj Comput. Mater.* **2**, 16028 (2016).
22. Dunn, A., Wang, Q., Ganose, A., Dopp, D. & Jain, A. Benchmarking materials property prediction methods: the Matbench test set and automatminer reference algorithm. Preprint at <https://arxiv.org/abs/2005.00707>.
23. Jha, D. et al. ElemNet: deep learning the chemistry of materials from only elemental composition. *Sci. Rep.* **8**, 17593 (2018).
24. Goodall, R., & Lee, A. Predicting materials properties without crystal structure: deep representation learning from stoichiometry. <https://arxiv.org/abs/1910.00617>.
25. Xie, T. & Grossman, J. C. Crystal graph convolutional neural networks for an accurate and interpretable prediction of material properties. *Phys. Rev. Lett.* **120**, 145301 (2018).
26. Deml, A. M., O'Hayre, R., Wolverton, C. & Stevanović, V. Predicting density functional theory total energies and enthalpies of formation of metal-nonmetal compounds by linear regression. *Phys. Rev. B* **93**, 085142 (2016).
27. Faber, F. A., Lindmaa, A., von Lilienfeld, O. A. & Armiento, R. Machine learning energies of 2 million elpasolite ABC2D6 crystals. *Phys. Rev. Lett.* **117**, 135502 (2016).
28. Ward, L. et al. Including crystal structure attributes in machine learning models of formation energies via Voronoi tessellations. *Phys. Rev. B* **96**, 024104 (2017).
29. Chen, C., Ye, W., Zuo, Y., Zheng, C. & Ong, S. P. Graph networks as a universal machine learning framework for molecules and crystals. *Chem. Mater.* **31**, 3564–3572 (2019).
30. Chen, T. & Guestrin, C. XGBoost: a scalable tree boosting system. *Proceedings of the 22nd ACM SIGKDD International Conference on Knowledge Discovery and Data Mining - KDD '16* 785–794 (2016). <https://doi.org/10.1145/2939672.2939785>.
31. Stevanović, V., Lany, S., Zhang, X. & Zunger, A. Correcting density functional theory for accurate predictions of compound enthalpies of formation: fitted elemental-phase reference energies. *Phys. Rev. B* **85**, 115104 (2012).
32. Pandey, M. & Jacobsen, K. W. Heats of formation of solids with error estimation: the mBEEF functional with and without fitted reference energies. *Phys. Rev. B* **91**, 235201 (2015).
33. Zhang, Y. et al. Efficient first-principles prediction of solid stability: towards chemical accuracy. *npj Comput. Mater.* **4**, 9 (2018).
34. Miedema, A. R. Simple model for alloys. *Philips Tech. Rev.* **33**(no. 6), 149–160 (1973).
35. Isaacs, E. B. & Wolverton, C. Performance of the strongly constrained and appropriately normed density functional for solid-state materials. *Phys. Rev. Mater.* **2**, 063801 (2018).
36. Aykol, M., Dwaraknath, S. S., Sun, W. & Persson, K. A. Thermodynamic limit for synthesis of metastable inorganic materials. *Sci. Adv.* **4**, eaaq0148 (2018).
37. Sun, W. et al. The thermodynamic scale of inorganic crystalline metastability. *Sci. Adv.* **2**, e1600225 (2016).
38. Xu, K. et al. Show, attend and tell: neural image caption generation with visual attention. Preprint at <https://arxiv.org/abs/1502.03044>.
39. Thackeray, M. M., David, W. I. F., Bruce, P. G. & Goodenough, J. B. Lithium insertion into manganese spinels. *Mater. Res. Bull.* **18**, 461–472 (1983).
40. Armstrong, A. R. & Bruce, P. G. Synthesis of layered LiMnO₂ as an electrode for rechargeable lithium batteries. *Nature* **381**, 499–500 (1996).
41. Thackeray, M. M. et al. Li₂MnO₃-stabilized LiMO₂ (M = Mn, Ni, Co) electrodes for lithium-ion batteries. *J. Mater. Chem.* **17**, 3112–3125 (2007).
42. Lee, J. et al. Reversible Mn²⁺/Mn⁴⁺ double redox in lithium-excess cathode materials. *Nature* **556**, 185–190 (2018).
43. Noh, J. et al. Inverse design of solid-state materials via a continuous representation. *Matter*, <https://doi.org/10.1016/j.matt.2019.08.017>.
44. Isayev, O. et al. Universal fragment descriptors for predicting properties of inorganic crystals. *Nat. Commun.* **8**, 15679 (2017).
45. Bartók, A. P., Kondor, R. & Csányi, G. On representing chemical environments. *Phys. Rev. B* **87**, 184115 (2013).
46. Jha, D. et al. Enhancing materials property prediction by leveraging computational and experimental data using deep transfer learning. *Nat. Commun.* **10**, 5316 (2019).
47. Ong, S. P. et al. The materials application programming interface (API): a simple, flexible and efficient API for materials data based on REpresentational State Transfer (REST) principles. *Comput. Mater. Sci.* **97**, 209–215 (2015).
48. Jain, A. et al. Formation enthalpies by mixing GGA and GGA+U calculations. *Phys. Rev. B* **84**, 045115 (2011).
49. Wang, L., Maxisch, T. & Ceder, G. Oxidation energies of transition metal oxides within the GGA+U framework. *Phys. Rev. B* **73**, 195107 (2006).
50. Ward, L. et al. Matminer: an open source toolkit for materials data mining. *Comput. Mater. Sci.* **152**, 60–69 (2018).
51. Chollet, F. et al. Keras. Available at: <https://keras.io> (2015).

ACKNOWLEDGEMENTS

This work was primarily funded by the U.S. Department of Energy, Office of Science, Office of Basic Energy Sciences, Materials Sciences and Engineering Division under Contract No. DE-AC02-05-CH11231 (Materials Project program KC23MP). High Performance Computing resources were sponsored by the U.S. Department of Energy's Office of Energy Efficiency and Renewable Energy, located at NREL. This research also used the Savio computational cluster resource provided by the Berkeley Research Computing program at the University of California, Berkeley (supported by the UC Berkeley Chancellor, Vice Chancellor for Research, and Chief Information Officer) and the Lawrence computational cluster resource provided by the IT Division at the Lawrence Berkeley National Laboratory (Supported by the Director, Office of Science, Office of Basic Energy Sciences, of the U.S. Department of Energy under Contract No. DE-AC02-05CH11231).

AUTHOR CONTRIBUTIONS

C.J.B., A.T., and G.C. conceived the project. C.J.B., A.T., Q.W., and A.D. designed the project. A.T., Q.W., and A.D. implemented the machine learning models. C.J.B. performed the stability analysis, processed the results, and drafted the manuscript. A. J. and G.C. supervised the project. All authors reviewed and edited the manuscript.

COMPETING INTERESTS

The authors declare no competing interests.

ADDITIONAL INFORMATION

Supplementary information is available for this paper at <https://doi.org/10.1038/s41524-020-00362-y>.

Correspondence and requests for materials should be addressed to C.J.B. or G.C.

Reprints and permission information is available at <http://www.nature.com/reprints>

Publisher's note Springer Nature remains neutral with regard to jurisdictional claims in published maps and institutional affiliations.



Open Access This article is licensed under a Creative Commons Attribution 4.0 International License, which permits use, sharing, adaptation, distribution and reproduction in any medium or format, as long as you give appropriate credit to the original author(s) and the source, provide a link to the Creative Commons license, and indicate if changes were made. The images or other third party material in this article are included in the article's Creative Commons license, unless indicated otherwise in a credit line to the material. If material is not included in the article's Creative Commons license and your intended use is not permitted by statutory regulation or exceeds the permitted use, you will need to obtain permission directly from the copyright holder. To view a copy of this license, visit <http://creativecommons.org/licenses/by/4.0/>.

© The Author(s) 2020