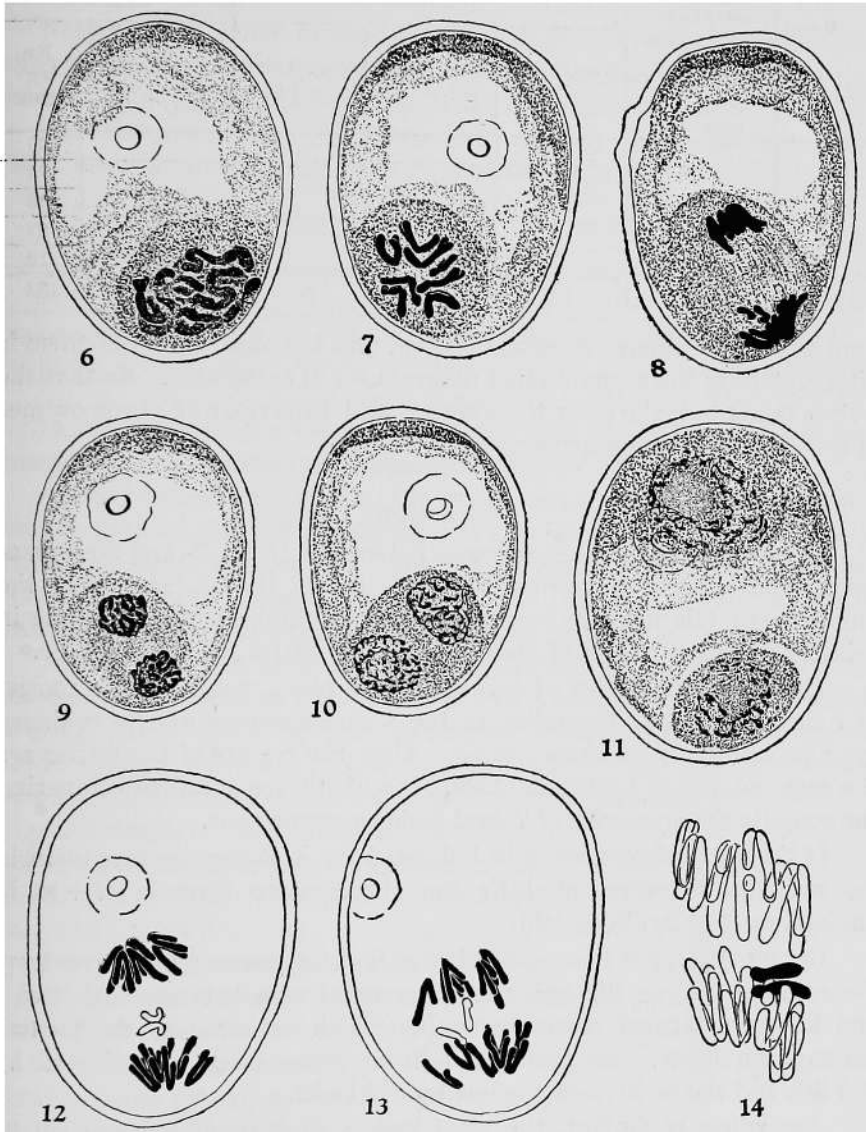


The generative nucleus divides again to form two elongated sperm nuclei. The metaphasic chromosomes in this division are smaller



Figs. 6-14. Primary nuclear division in pollen grains of 8-chromosome rye. $\times 940$ for Figs. 6-14, $\times 2130$ for Fig. 14. 6. Prophase. 7. Metaphase. 8. Anaphase; showing irregular distribution, the extra chromosome is going to generative nucleus without division. 9. Late anaphase. 10. Telophase. 11. Vegetative nucleus moved to the side where the germ pore is located. 12. Early anaphase; the extra chromosome is retarded. 13. Early anaphase; 2 halves of the extra chromosome are going to the different poles. 14. Anaphase; the generative nucleus receives 2 halves of the extra chromosome, but the vegetative ordinary 7 chromosomes.

