

RESEARCH

Open Access

A data repository and analysis framework for spontaneous neural activity recordings in developing retina

Stephen John Eglen^{1*}, Michael Weeks², Mark Jessop², Jennifer Simonotto^{3,4}, Tom Jackson² and Evelyne Sernagor⁵

Abstract

Background: During early development, neural circuits fire spontaneously, generating activity episodes with complex spatiotemporal patterns. Recordings of spontaneous activity have been made in many parts of the nervous system over the last 25 years, reporting developmental changes in activity patterns and the effects of various genetic perturbations.

Results: We present a curated repository of multielectrode array recordings of spontaneous activity in developing mouse and ferret retina. The data have been annotated with minimal metadata and converted into HDF5. This paper describes the structure of the data, along with examples of reproducible research using these data files. We also demonstrate how these data can be analysed in the CARMEN workflow system. This article is written as a literate programming document; all programs and data described here are freely available.

Conclusions: 1. We hope this repository will lead to novel analysis of spontaneous activity recorded in different laboratories. 2. We encourage published data to be added to the repository. 3. This repository serves as an example of how multielectrode array recordings can be stored for long-term reuse.

Keywords: Retinal waves, Spontaneous activity, Electrophysiology, HDF5, Multielectrode arrays

Dedication

We dedicate this paper to the memory of our dear friend and colleague Professor Colin Ingram who died December 15th 2013. Colin was the lead investigator on the CARMEN project, from which this study arose.

Background

The retina is the neural circuit within the eye responsible for converting light signals into neural activity. During at least the first postnatal week of life in the mouse, retinal ganglion cells (RGCs) are spontaneously active, generating waves of activity that propagate across the retina. These spontaneous activity patterns are thought to help refine the development of neuronal connections, since blocking

or perturbing the activity leads to altered connectivity patterns. For reviews on the nature and role of spontaneous activity in the nervous system, see [1,2].

Retinal waves can be studied using both imaging methods and multielectrode arrays (MEAs). We have collected and annotated these recordings to allow researchers to compare the spatiotemporal properties of recordings obtained from different research groups. We have focused on curating recordings collected by MEAs, because although there are several types of array recording platforms available on the market, the underlying data after spike detection and sorting is simply a set of event times denoting when an action potential was detected on a particular electrode.

This paper describes the repository we have curated from many key papers investigating the nature of retinal spontaneous activity. We have converted these data files into a common format so that it can be easily shared

*Correspondence: sje30@cam.ac.uk

¹Cambridge Computational Biology Institute, University of Cambridge, Wilberforce Road, CB3 0WA Cambridge, UK

Full list of author information is available at the end of the article

Table 1 Descriptions of the MEA layouts in the repository, along with their name and number (n) of recordings (Dynamic)

Array	n	Description
MCS_8x8_100um	154	60 electrodes in square lattice (corners missing) with 100 μm spacing (Multi Channel Systems).
MCS_8x8_200um	70	60 electrodes in square lattice (corners missing) with 200 μm spacing (Multi Channel Systems).
APS_64x64_42um	48	4096 electrodes in square lattice with 42 μm spacing (L Berdondini, IIT).
litke_hex_60um	29	512 electrodes on hexagonal lattice with 60 μm spacing (AM Litke, UCSC).
EJC1_hex_60um	54	61 electrodes on hexagonal lattice with 60 μm spacing (EJ Chichilnisky, Salk).
stanford_hex_60um	11	61 electrodes on hexagonal lattice with 60 μm spacing (Stanford).

with others, and provide some scripts to analyse these recordings. We created this repository for several reasons:

1. By building a repository from many sources we are able to effectively compare findings from laboratories acquired under different experimental conditions, and from different transgenic mice.
2. There are few public datasets of MEA recordings, although some are available accompanying research papers [3].
3. We hope this platform will encourage future researchers to contribute their data. Many funding agencies now require data to be archived and shared for several years, and we hope this will serve as an example of how to share this type of data.
4. Converting data to a standard open format, such as HDF5, should ensure that they can be read for many years to come. By contrast, keeping old datasets in proprietary formats may mean that the data are effectively unreadable in a few years.
5. We have used these data as a demonstration for the workflow system in the CARMEN virtual laboratory.

This article is written as an example of “reproducible research”, in that the results should be reproducible by

others in a straightforward manner, given the same software and data [4]. The notion of reproducible research is beginning to be practised quite widely in some areas, such as Computational Biology [5], but is not yet that common within most fields, including Neuroscience [6,7]. Figures and tables marked (Dynamic) in the legends of this article are regenerated dynamically, involving recomputation as needed. (Figures and tables marked (Static) are those that required no computation.) The source file for this article contains \LaTeX and R code, from which the paper is generated (see section “Availability of supporting data”). Links to all files required to regenerate the paper are provided on the accompanying website [8].

Data description

The project web page [8] contains links to the data and code, and will list any updates to the repository. The data are freely available on the CARMEN portal [9]. Free registration to the CARMEN system is required to access the data.

The data provided to us from different laboratories arrived in several text and binary formats. We converted them to one common format to promote their reuse. We chose the open format HDF5 [10] because it provides an efficient and portable framework for storing large datasets. It is supported by many popular computational environments, such as R, Python, Mathematica, Matlab and Julia, and is freely available on all major operating systems. HDF5 is used across many scientific disciplines and is well-tested.

HDF5 stores objects in a hierarchical tree that can be fully specified by the user. Our approach is to store the principal data items (such as spike times and electrode positions) for a recording in the top level of the tree. Relevant metadata about recordings (such as the age of the retina, and the species) are stored in objects under the `/meta/` group of the tree.

Data format for storage of MEA recordings

The following objects are stored in the root of the HDF5 data files:

1. `epos`: an $N \times 2$ matrix, where N is the number of spike trains in the recording. Row i stores the (x, y)

Table 2 Keys and citations of the data sources in the repository

Key	n	Citation
Blankenship2011	17	[11]
Demas2003	37	[12]
Demas2006	41	[13]
Hennig2011	8	[14]
Kirkby2013	22	[15]
Maccione2014	48	[16]
Stacy2005	7	[17]
Stafford2009	29	[18]
Sun2008	62	[19]
Torborg2004	54	[22]
Wong1993	11	[29]
Xu2011	30	[26]

n is the number of files associated with each key (Dynamic).

Table 3 Metadata items stored in the repository

Name	Type	Default	Description	Table
key	String	—	A primary key to indicate the study that the file is associated with. This is typically of the form <i>Wong1993</i> , i.e. surname of first author and year of main paper [29].	Table 2
species	String	—	Species name; most recordings are from mouse, but we also have ferret recordings [29]. Although ages for both animals are given in postnatal days, ferret and mice have different gestational periods, and so cannot be directly compared.	Table 4
age	Integer	—	Postnatal age of the animal. For one study [29], adult recordings were represented as age 500 days. (There are currently no embryonic recordings, but these could be represented by negative values; zero is the day of birth.)	Table 5
genotype	String	"wt"	Genotype (of the mouse), with the default "wt" indicating a wild-type mouse.	Table 6
cond	String	"ctl"	A brief description of the conditions under which the spontaneous activity were made. e.g. some recordings were made in dark reared ("dr") mice, and sometimes pharmacological agents were used. If no condition is supplied, control ("ctl") is assumed.	Table 7

Values with no default are compulsory. The final column refers to subsequent tables for more details on each name (Static).

location assigned to spike train i in this recording. The values x and y are specified in μm .

2. `sCount`: a vector of length N . `sCount[i]` stores the number of spikes included in spike train i .
3. `spikes`: a vector of length S , where $S = \text{sum}(sCount)$. These are the spike times (in seconds). The spike trains for each electrode are concatenated into one long vector, so that the spikes for electrode $j \in [1, N]$ are stored in elements a to b , where $a = \sum_{i=1}^{j-1} sCount[i]$ and $b = a + sCount[j] - 1$. Within each spike train, the spike times are sorted, smallest first.
4. `array`: a string describing the MEA used to record the activity. Table 1 lists the values used to date.
5. `names`: an optional vector of strings of length N ; `names[i]` stores the name assigned to spike train i .

To help summarize each recording, we have also created a `/summary` group containing information which can be readily computed from the spike trains. These summary points can be read from HDF5 files on their own (rather than reading the entire file) and so provides an efficient cache of this information. The following fields are provided.

1. `/summary/N`: the number of spike trains.
2. `/summary/duration`: the duration of the recording in seconds, rounded up to the nearest second.

3. `/summary/frate`: a vector of length N . Element i stores the firing rate in Hz of spike train i .
4. `/summary/totalspikes`: the total number of spike trains in the file.

Data sources

Table 2 lists the main studies included in the repository, and the number of files in each collection. A key challenge in creating the repository was writing functions to parse the various formats of source data from the different research groups. This has now been done for each of the major formats. When each data set was converted, tests were performed to check that our results matched those presented in the original publications; some of these checks are discussed later. First we describe each of the key studies included in the repository:

Blankenship2011 This study investigated the impact of knocking out two connexin isoforms (Cx36 or Cx45) upon spontaneous activity [11]. Recordings of wild-type, single or double (Cx36 and Cx45) knock-outs were performed at postnatal day 11/12 (P11/12).

Demas2003 Recordings over an extended period (P9–P42) were made in wild-type mice, along with mice reared in the dark [12]. This study also served as a baseline for subsequent recordings in transgenic mice [13].

Demas2006 This set contains data recorded from *nob* mutant mouse, where retinal waves persist at late developmental stages [13].

Hennig2011 A set of eight recordings investigating the effects of chronic bicuculline application at two critical ages when the effect of GABA upon RGCs switches from excitatory to inhibitory [14].

Table 4 Numbers of recordings for each species (Dynamic)

Species	n
Ferret	11
Mouse	355

Table 5 Numbers of files from each study (rows) for each postnatal age (columns) (Dynamic)

	0	1	2	3	4	5	6	7	8	9	10	11	12	13	15	21	30	42	500
Blankenship2011	0	0	0	0	0	0	0	0	0	0	0	17	0	0	0	0	0	0	0
Demas2003	0	0	0	0	0	0	0	0	0	2	0	5	0	3	9	8	0	10	0
Demas2006	0	0	0	0	0	0	0	10	0	0	0	0	10	0	8	13	0	0	0
Hennig2011	0	0	0	0	0	2	2	0	0	2	2	0	0	0	0	0	0	0	0
Kirkby2013	0	0	0	0	2	7	10	3	0	0	0	0	0	0	0	0	0	0	0
Maccione2014	0	0	1	2	4	4	6	2	4	7	5	7	3	3	0	0	0	0	0
Stacy2005	0	0	0	0	0	7	0	0	0	0	0	0	0	0	0	0	0	0	0
Stafford2009	0	0	0	0	0	0	29	0	0	0	0	0	0	0	0	0	0	0	0
Sun2008	0	1	3	2	13	17	3	4	4	4	2	6	1	2	0	0	0	0	0
Torborg2004	0	0	0	2	12	9	0	1	3	0	16	11	0	0	0	0	0	0	0
Wong1993	1	1	0	0	1	1	0	0	0	0	0	0	1	0	2	2	1	0	1
Xu2011	0	0	0	0	30	0	0	0	0	0	0	0	0	0	0	0	0	0	0

Kirkby2013 Recent recordings from wild-type and $\beta 2$ knock-out (KO) mice recorded in the first postnatal week [15].

Maccione2014 Wild-type recordings in developing mouse retina recorded from P2 to P13 using a high density (4096 electrode) MEA [16]. This study presents recordings with high spatial resolution obtained at pan retinal scale. It reports that waves become localized hotspots shortly before eye opening and that cellular recruitment within waves increases significantly during the second postnatal week.

Stacy2005 A set of further control recordings in wild-type mice are provided [17]. In this study, retinal waves were also recorded in transgenic mice where cholinergic neurotransmission was inhibited in most of the retina.

However, recordings from the transgenic animal could not be found post-publication.

Stafford2009 A detailed set of recordings at one age (P6) showing that $\beta 2$ KO mice still generate correlated waves [18]; see also [19]. A directional bias in control waves was also reported for the first time.

Sun2008 Two different versions of the $\beta 2$ KO transgenic mice were studied and, in comparison to earlier studies [20], were shown to have correlated activity extending over larger distances than wild type. Although the key paper [19] focuses on postnatal days 4 and 5, recordings from a range of days are provided, and were analysed separately [21].

Torborg2004 This key summarises data that appeared in several publications [20,22-24]. These were the first MEA

Table 6 Numbers of recordings of each genotype included in the repository

	Beta2 KO	Beta2 KO/Cx36 KO	Beta2 Picciotto	Beta2(TG)	Beta2 Xu	Cx36 KO	Cx36 KO/Cx45 KO	Cx45 KO	nob	wt
Blankenship2011	0	0	0	0	0	2	6	4	0	5
Demas2003	0	0	0	0	0	0	0	0	0	37
Demas2006	0	0	0	0	0	0	0	0	25	16
Hennig2011	0	0	0	0	0	0	0	0	0	8
Kirkby2013	11	0	0	0	0	0	0	0	0	11
Maccione2014	0	0	0	0	0	0	0	0	0	48
Stacy2005	0	0	0	0	0	0	0	0	0	7
Stafford2009	0	0	0	0	0	0	0	0	0	29
Sun2008	0	0	21	0	18	0	0	0	0	23
Torborg2004	11	7	0	0	0	19	0	0	0	17
Wong1993	0	0	0	0	0	0	0	0	0	11
Xu2011	0	0	0	17	0	0	0	0	0	13

Note that Wong1993 data are from ferret (Dynamic).

Table 7 Pharmacological and environmental conditions under which spontaneous activity were recorded

Cond	n
10 microM forskolin	1
25 microM APV + 25 microM CNQX; wash then 50 microM Mecamylamine	1
25 microM APV + 50 microM CNQX	1
2.88 microM FPL	2
2 microM forskolin	2
2 microM strychnine	1
50 microM Carbenoxolone	1
bic	4
ctl	332
dr	19
wash	2

Where possible, the descriptions of the conditions follow those provided with the original data (Dynamic).

recordings of spontaneous activity in the $\beta 2$ KO mouse, and showed that although individual RGCs were spontaneously active, the correlations in firing of neighbouring RGCs were strongly reduced. There are also recordings combining the $\beta 2$ KO line with a gap junction knock-out (CX36), and recordings under different pharmacological conditions.

Wong1993 These are the first MEA recordings of retinal waves, in ferret at different developmental ages. (Some data from here were presented also in [25].) This was the first paper to introduce the key measure of correlated activity, the correlation index, that has been subsequently used in most studies. Although the recordings are relatively short, they highlighted strong distance-dependent correlations gradually decaying with age. (Conversion of

Table 8 Summary of spike sorting methods used to create spike trains (Static)

Key	Spike sorting method
Blankenship2011	Plexon offline sorter
Demas2003	Plexon offline sorter
Demas2006	Plexon offline sorter
Hennig2011	Wave_clus [44]
Kirkby2013	Plexon offline sorter
Maccione2014	None
Stacy2005	None
Stafford2009	Mixture of Gaussians model [45]
Sun2008	Plexon offline sorter
Torborg2004	Manual clustering
Wong1993	Manual clustering
Xu2011	Plexon offline sorter

these files was complicated as they were binary files, so we converted them through a custom macintosh program written for these data by Markus Meister.)

Xu2011 To further investigate the effect of cholinergic neurotransmission, a transgenic line (where $\beta 2$ -nAChR was expressed in only RGCs of $\beta 2$ KO mice) was generated [26]. In this $\beta 2$ (TG) line, waves were restored, although the spatial extent of correlations was reduced.

Citing the data

We are grateful to our colleagues for sharing their recordings. If you use any of these data sets, we request that you acknowledge the relevant authors by citing the corresponding papers (listed in Table 2).

Minimal metadata

Our approach to metadata is deliberately minimal, simply describing what we think are some of the essential features of the recordings, such as developmental age, and genotype. This of course means that many details are missing, but in most cases we hope that they can be extracted (manually) from the corresponding publications. We store the metadata as named items in the HDF5 file, under the /meta/ group. For example, the developmental age of the recording is stored in /meta/age. Tables 1, 3, 4, 5, 6 and 7 describe the metadata that are included in the HDF5 files.

We attempted to include metadata regarding spike detection and sorting. However, many different methods for spike detection and sorting have been used in the last 25 years. These vary from manual, semi-automated to fully automated. Furthermore, the level of details included in publications varied significantly. Rather than encode these in the metadata, we instead provide a brief textual summary of the methods in Table 8.

Analyses

We now provide some examples of reproducible research using the repository. The aim is to summarise the main features of the repository, rather than to provide novel analyses of these data.

R package

We have used the R programming environment to develop a package of tools for the analysis of spontaneous activity. R, however, is not required to use these data files. This R package (called *sjemea*) was created in 2001 (to support work subsequently published [12]) and is still under development. The package primarily focuses on the batch analysis of data; other open tools more suitable towards interactive analysis are available [27,28]. We now give several examples of analysing the repository using code from this R package.

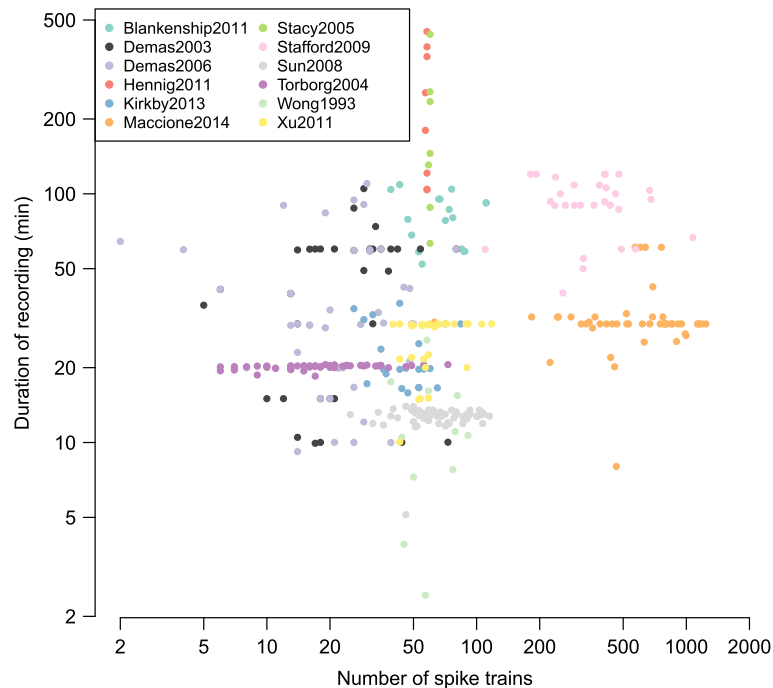


Figure 1 Basic features of recordings in the repository. Each recording is summarised by its number of spike trains and its duration. The colour of each point indicates which collection the recording comes from. Both axes are plotted on a log scale. We currently have 366 recordings in the repository, occupying 298 MB on disc (Dynamic).

Overview of the repository

Figure 1 provides an overview of the repository, showing that recordings range from just a few minutes to many hours. In particular, we see that two different groups recorded waves continuously for up to eight hours [14,17].

As all recordings were from extracellular electrodes, each electrode can detect activity from multiple neurons. Most, but not all, recordings have been spike-sorted to discriminate activity from multiple on each electrode. We therefore refer to spike trains coming from “units” throughout this paper to avoid confusion between multi-unit activity from several neurons and inferred activity from a single neuron. Most recordings contain fewer than 100 spike trains because they were made on MEAs consisting of 60 or 64 electrodes. There are also two clear groups of recordings with around 500–1300 units which were recorded from the two higher-density arrays [16,18].

Fourplot

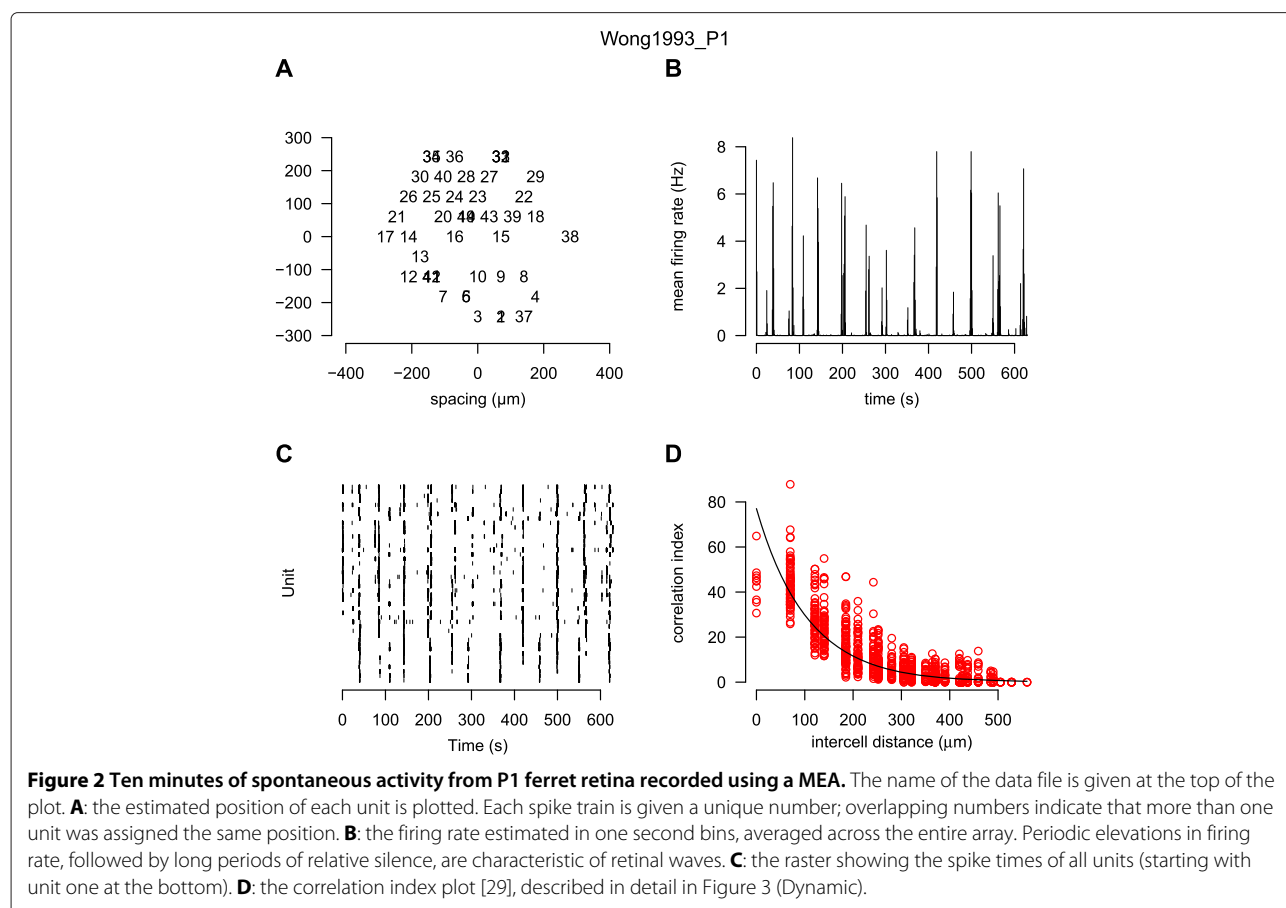
The “fourplot” is our one page summary plot of a recording which we use as an initial screen to check its quality. Figure 2 shows one such example. This plot allows us to quickly evaluate the recording using the features described in the figure legend. The accompanying website has a gallery section showing the fourplot for each datafile in the repository.

Correlation indices in neonatal ferret retina

Retinal waves induce correlations in the firing patterns of neighbouring RGCs. This was first demonstrated in the analysis of ferret retinal waves using the correlation index measure [29]. The correlation index measures the degree that two units spike together within some small time window (typically 50 ms). Figure 3 shows the correlation index as a function of the distance separating any given pair of units. This figure almost exactly replicates Figure eight of the prior study [29], with the only exception that we also show correlation indices for pairs of units with zero distance separating them.

Correlation indices in wild-type and transgenic mice

Cholinergic neurotransmission is required for the generation of retinal waves in early development [30,31]. One key transgenic line has been global knock-out of the $\beta 2$ subunit of the nicotonic acetylcholine receptor (nAChR), termed $\beta 2$ KO here. Initial reports suggested that $\beta 2$ KO mice lack retinal waves [20,32], but subsequent studies reported retinal waves in these mice [18,19]. These differences might have occurred because of different recording conditions, notably temperature and bath medium [18]. Given the importance of these results, we have collected and curated most of the key recordings published to date that quantify spontaneous activity in $\beta 2$ KO mice.



The effects of transgenically rescuing $\beta 2$ -nAChR into just RGCs, leaving it knocked out in the rest of the nervous system, were recently investigated [26]. In this genetic manipulation, termed $\beta 2$ (TG), retinal waves were correlated over shorter distances than waves in wild-type mice (Figure one(G) of [26]). We have recreated that result by recalculating the correlation indices. Figure 4 has the same key properties as previously reported with the notable exception that the correlation indices in both wild-type and $\beta 2$ (TG) mice are about half the magnitude compared to those originally reported. However, the shape of the two groups, and the overall conclusions, are unaffected. The discrepancy between the two results is likely to be an artifact of the method previously used [26], although their code is no longer available to confirm this.

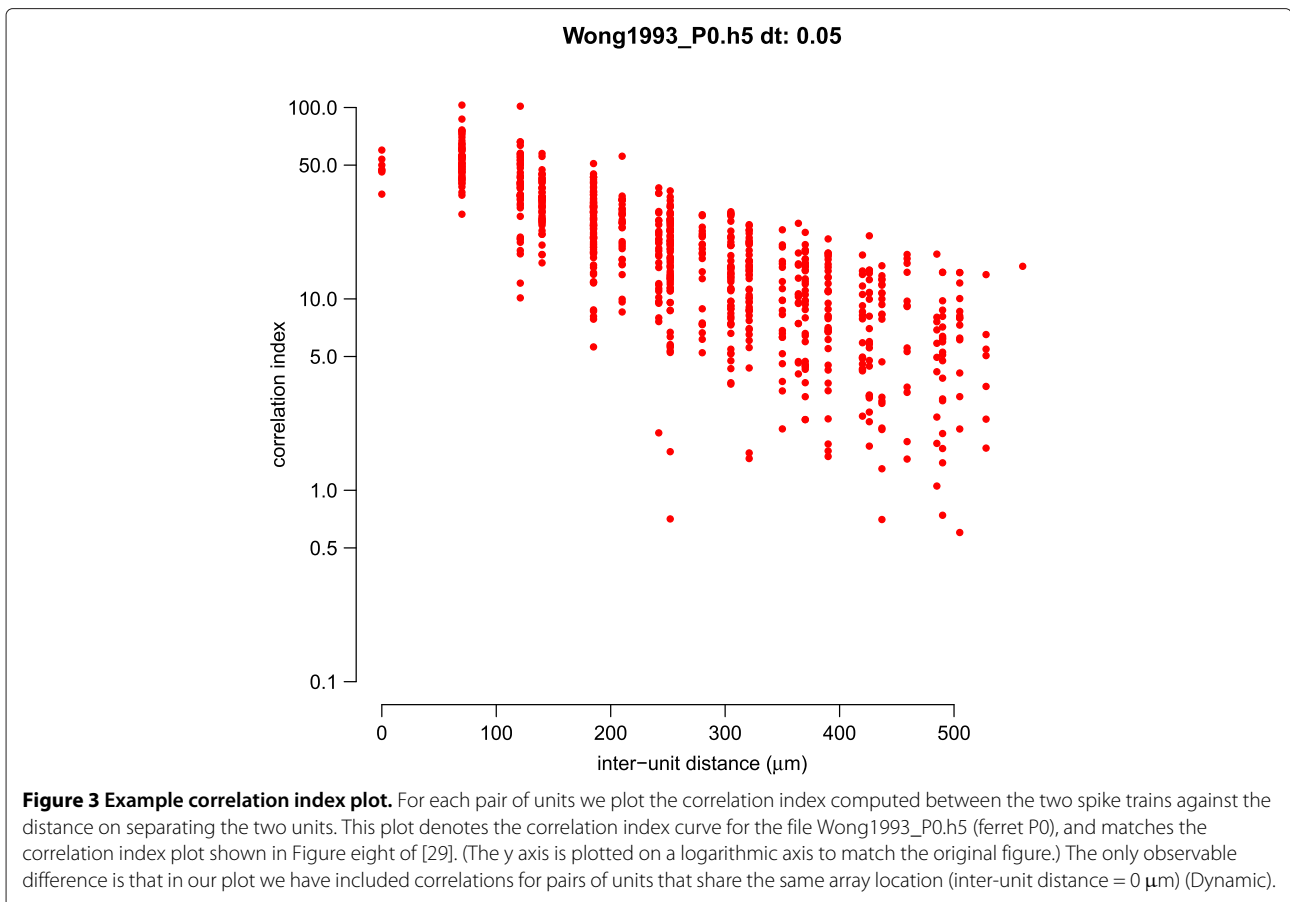
CARMEN application: burst analysis

We have made our data freely available in the CARMEN system [33]. The CARMEN Virtual Laboratory is a collaborative online facility for neuroscientists. Data can be uploaded to a repository, and shared with other neuroscientists. Extensive metadata [34] can be attached to the data, and a search facility allows data to be located in the repository. The system is currently targeted towards

electrophysiology data, and predominantly MEA and electroencephalography (EEG) data.

Useful neuroscience analysis routines can be converted into CARMEN services [35]. Service code can be written in a range of programming languages (including Matlab, Python, R, C/C++, Java), and can be easily wrapped into a service using the CARMEN Service Builder tool. Metadata attached to each service provides information for the user and the system. Once a service has been registered with the CARMEN system, users can run them via the portal, using any available data on the repository. The service is executed within the CARMEN system's execution environment, which is a private cloud of heterogeneous servers. The execution environment can support multiple execution server environments; currently these are Windows Server, Centos5 Linux and Scientific Linux 4 platforms. The execution details are hidden from the user.

The CARMEN portal also deploys a workflow tool within the browser, to allow users to tie services together into a processing pipeline. In order to support the interaction of services, a common data standard for all data types is used; the Neural Data Translation Format (NDF). NDF provides a standard format for neural time series



data, segment data, and event data [36]. In addition it has a rich metadata header which provides a detailed description of the data contents, and which supports the addition of annotations and other relevant attachments (e.g., visual or audio files). A workflow editor provides a graphical means to construct and edit workflows. A workflow enactment engine allows the workflow to be run over the execution servers. The heterogeneous nature of the service infrastructure means that a workflow can be constructed from services that are written using different programming languages and for differing platforms.

To demonstrate the virtual laboratory workflows on these data, three services were built in Matlab and compiled into a standalone executable for inclusion into the service framework:

1. HDF5 to NDF converter — This reads in the HDF5 file and converts it into an NDF neural event data file.
2. A burst detection service — This finds bursts independently within each spike train of a recording [14]. The service takes input data in the form of an NDF neural event file.
3. A graphing service to plot burst durations of multiple input files.

The CARMEN workflow facility (Figure 5) chains these services together so that given an input file, it is first converted into NDF and then the burst times are computed. The output from the independent burst analysis services are then compared to generate a plot such as Figure 6. This figure demonstrates that median burst duration is around 0.1 s and there is good agreement between recordings from different laboratories, albeit with one recording showing a few bursts longer than 2 s.

Discussion

Role of the repository

Given the ongoing debate about whether neuronal activity instructs the development of neuronal circuits [37,38], we believe it is important to understand the spatiotemporal properties of waves in different recordings. This repository provides a framework for systematic studies of spontaneous activity, looking for example at the effects of particular mutations, such as the $\beta 2$ KO. Furthermore, we can now begin to study the variability between laboratories when recording spontaneous activity in the retina, as has already been reported for cortical cultures [39]. We hope this repository will also lead to increased data reuse.

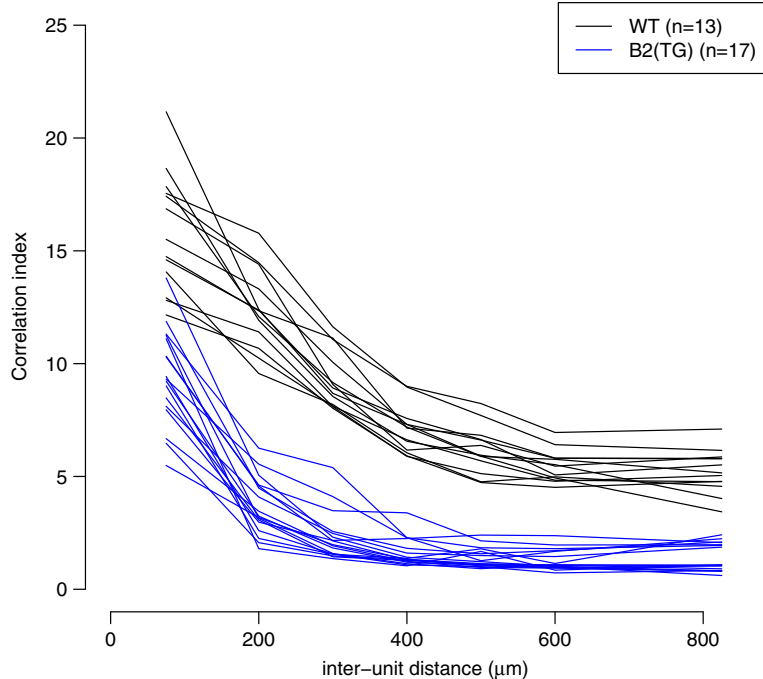


Figure 4 Family of correlation index plots to summarise retinal wave data recorded at P4 [26]. Each line represents the mean correlation index, where the inter-unit distance has been grouped into approximately 100 μm bins, from one recording. The colour of the line denotes whether the recording was taken from a wild-type or $\beta 2(\text{TG})$ mouse (Dynamic).

Collecting new data

We hope that the repository will prove useful and we encourage investigators to provide recordings of spontaneous activity. We typically require only spike times (rather than voltage traces) and a description of how to map units to positions on the array. The minimal metadata is also required, typically in a spreadsheet. It is preferable if the data have already been presented in an article, so that

we can refer to that article. Unpublished data can also be accepted as long as the investigator is aware that the data are made freely available.

The current focus of the repository is on collecting spontaneous activity from developing retina. Since spontaneous activity is present in other systems, we also anticipate extending the repository to include data from, for example, cortical and hippocampal cultures [40].

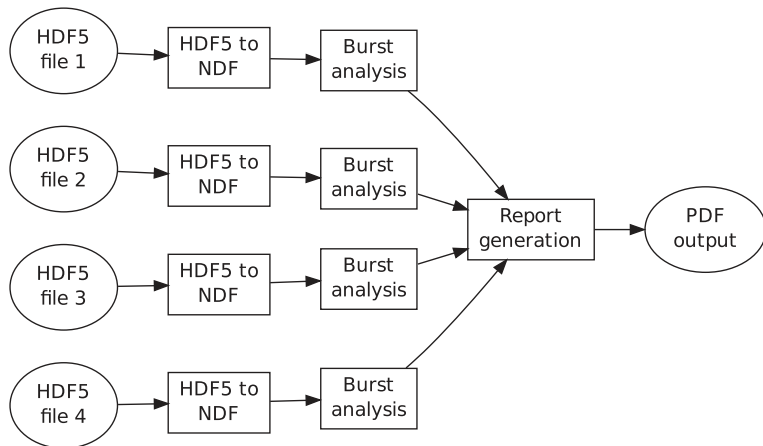


Figure 5 Example of the CARMEN workflow facility. Ellipses denote files and boxes denote CARMEN services. Four HDF5 files are independently converted into NDF for burst analysis. The outputs (in this case, the duration of each burst detected on each electrode) are then collated into a report generation service to produce a graphical summary, shown in Figure 6 (Static).

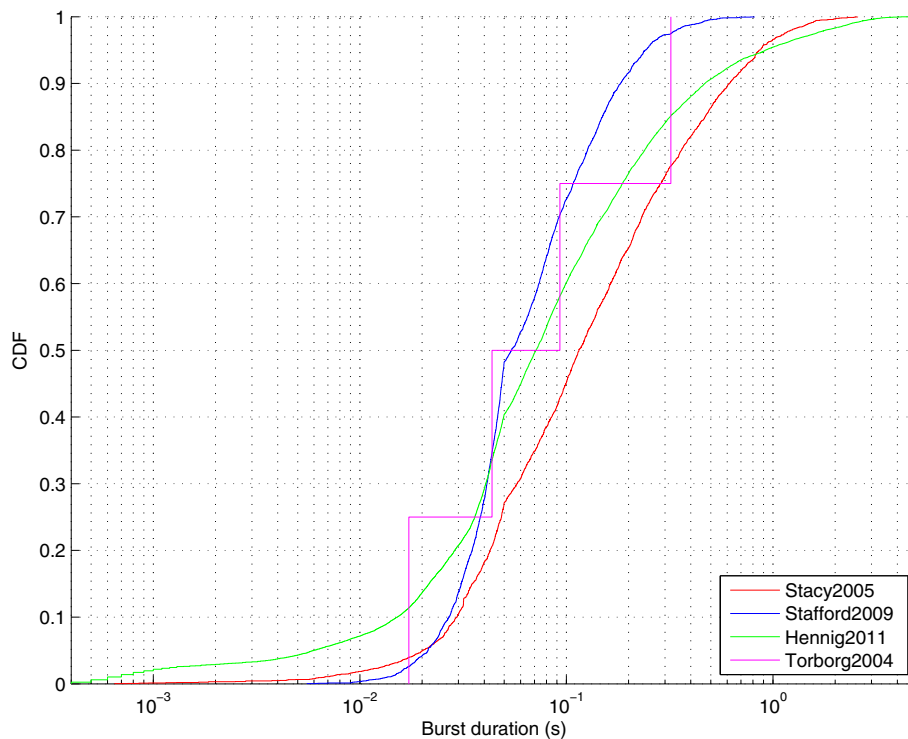


Figure 6 Burst durations for spontaneous activity recorded from four laboratories at postnatal day 5 or 6. This file is the output from the CARMEN workflow illustrated in Figure 5. One file was selected from four different datasets. Each curve shows the cumulative distribution (denoted CDF) of burst durations. The number of bursts detected from each recording were Stacy2005: 2903 bursts (from 60 units); Stafford2009: 3338 (571); Hennig2011: 16896 (58); Torborg2004: 4 (13) (Static).

Generating new standards

To date, there are no established standards for storing spike trains recorded from MEAs. However, one key aim of the datasharing program of the International Neuroinformatics Coordinating Facility (INCF) is to establish such standards. We anticipate that the data provided here can be a useful test case for evaluating any proposed standards [41]. Given the relatively simple format in which our data are currently provided, we imagine that changing the data files to accommodate any new standards should be straightforward.

Methods

All data reported in this paper have been previously published, see Table 2. Details of the experimental procedures are available in those articles. In all cases, recordings of spike times (rather than voltage traces) were provided. Files were then converted into the common HDF5 framework described in this paper. During this conversion, data were checked where possible with previous reports, for example, descriptions of mean firing rates. Metadata were validated using a separate script. The fourplot (Figure 2) for each recording was also checked. In a few instances this led to discussions with the original authors, or some data being excluded.

Availability of supporting data

The HDF5 files are available as a zip file [9], and accompanying code is linked to from the project web page [8]. This article is an example of a literate programming document. It has been created in R using the `knitr` package [42]. Figures and tables in this paper are generated dynamically as the document is compiled. Several R packages are required to run the analysis. Materials are archived in the Gigascience database [43], and full details are also given on the “Code” section of the accompanying website.

Abbreviations

CARMEN: Code analysis, repository and modelling for E-Neuroscience; CDF: Cumulative distribution function; CRAN: Comprehensive R archive network; EEG: Electroencephalography; HDF5: Hierarchical data format, version 5; INCF: International neuroinformatics coordinating facility; KO: Knock-Out; MEA: Multielectrode array; NDF: Neural data translation format; Pn: Postnatal day n , e.g. P5 for postnatal day 5; RGC: Retinal ganglion cell; TG: Transgenic.

Competing interests

The authors declare that they have no competing interests.

Authors' contributions

SJE and ES conceived and designed the project. SJE and JDS collected and pre-processed data from groups. SJE curated and processed data, as well as contributed code. MJ, TJ and MW carried out CARMEN workflow analysis. SJE, TJ, ES and MW wrote the manuscript. All authors read and approved the final manuscript.

Acknowledgements

We thank all the investigators who have contributed data to the repository. Thanks to Matthias Hennig and Matthew Down for providing a burst analysis algorithm for use in the CARMEN workflow. Andrew Morton provided a Neuroexplorer script for converting data files. This work was supported by grants from EPSRC (EP/E002331/1), BBSRC (BB/H023577/1 and BB/I000984/1) and Wellcome Trust (083205/B/07/Z).

Author details

¹Cambridge Computational Biology Institute, University of Cambridge, Wilberforce Road, CB3 0WA Cambridge, UK. ²Advanced Computer Architecture Group, Computer Science Department, University of York, YO10 5GH York, UK. ³School of Computing Science, Newcastle University, NE1 7RU, Newcastle, UK. ⁴National Heart and Lung Institute, Imperial College London, Hammersmith Campus, W12 0NN, London, UK. ⁵Institute of Neuroscience, Faculty of Medical Sciences, Newcastle University, Framlington Place, NE2 4HH, Newcastle, UK.

Received: 21 October 2013 Accepted: 13 March 2014

Published: 26 March 2014

References

1. Wong ROL: **Retinal waves and visual system development.** *Annu Rev Neurosci* 1999, **22**:29–47. doi:10.1146/annurev.neuro.22.1.29.
2. Blankenship AG, Feller MB: **Mechanisms underlying spontaneous patterned activity in developing neural circuits.** *Nat Rev Neurosci* 2010, **11**:18–29. doi:10.1038/nrn2759.
3. Wagenaar DA, Pine J, Potter SM: **An extremely rich repertoire of bursting patterns during the development of cortical cultures.** *BMC Neurosci* 2006, **7**:11. doi:10.1186/1471-2202-7-11.
4. Gentleman RC, Carey VJ, Bates DM, Bolstad B, Dettling M, Dudoit S, Ellis B, Gautier L, Ge Y, Gentry J, Hornik K, Hothorn T, Huber W, Iacus S, Irizarry R, Leisch F, Li C, Maechler M, Rossini AJ, Sawitzki G, Smith C, Smyth G, Tierney L, Yang JYH, Zhang J: **Bioconductor: open software development for computational biology and bioinformatics.** *Genome Biol* 2004, **5**:80. doi:10.1186/gb-2004-5-10-r80.
5. Goecks J, Nekrutenko A, Taylor J, Galaxy Team: **Galaxy: a comprehensive approach for supporting accessible, reproducible, and transparent computational research in the life sciences.** *Genome Biol* 2010, **11**:86. doi:10.1186/gb-2010-11-8-r86.
6. Delescluse M, Franconville R, Joucla S, Lieury T, Pouzat C: **Making neurophysiological data analysis reproducible: why and how?** *J Physiol Paris* 2011, **106**:159–170. doi:10.1016/j.jphysparis.2011.09.011.
7. Stevens J-LR, Elver M, Bednar JA: **An automated and reproducible workflow for running and analyzing neural simulations using lancet and IPython notebook.** *Front Neuroinform* 2013, **7**:44. doi:10.3389/fninf.2013.00044.
8. **Home Page for the Retinal Wave Repository.** [http://www.damtp.cam.ac.uk/user/eglen/waverepo]
9. **Zip File of HDF5 Files on CARMEN.** [https://portal.carmen.org.uk/#link=URN:LSID:portal.carmen.org.uk:metadata:36156]
10. **HDF5 Home Page.** [http://www.hdfgroup.org/HDF5]
11. Blankenship AG, Hamby AM, Firl A, Vyas S, Maxeiner S, Willecke K, Feller MB: **The role of neuronal connexins 36 and 45 in shaping spontaneous firing patterns in the developing retina.** *J Neurosci* 2011, **31**:9998–10008. doi:10.1523/jneurosci.5640-10.2011.
12. Demas J, Eglen SJ, Wong ROL: **Developmental loss of synchronous spontaneous activity in the mouse retina is independent of visual experience.** *J Neurosci* 2003, **23**:2851–2860.
13. Demas J, Sagdullaev BT, Green E, Jaubert-Miazza L, McCall MA, Gregg RG, Wong ROL, Guido W: **Failure to maintain eye-specific segregation in nob, a mutant with abnormally patterned retinal activity.** *Neuron* 2006, **50**:247–259. doi:10.1016/j.neuron.2006.03.033.
14. Hennig MH, Grady J, van Coppenhagen J, Sernagor E: **Age-dependent homeostatic plasticity of GABAergic signaling in developing retinal networks.** *J Neurosci* 2011, **31**:12159–12164. doi:10.1523/jneurosci.3112-11.2011.
15. Kirkby LA, Feller MB: **Intrinsically photosensitive ganglion cells contribute to plasticity in retinal wave circuits.** *Proc Natl Acad Sci USA* 2013, **110**:12090–12095. doi:10.1073/pnas.1222150110.
16. Maccione A, Hennig MH, Gandolfo M, Muthmann O, van Coppenhagen J, Eglen SJ, Berdondini L, Sernagor E: **Following the ontogeny of retinal waves: Pan-Retinal recordings of population dynamics in the neonatal mouse.** *J Physiol* 2014. doi:10.1113/jphysiol.2013.262840.
17. Stacy RC, Demas J, Burgess RW, Sanes JR, Wong ROL: **Disruption and recovery of patterned retinal activity in the absence of acetylcholine.** *J Neurosci* 2005, **25**:9347–9357. doi:10.1523/jneurosci.1800-05.2005.
18. Stafford BK, Sher A, Litke AM, Feldheim DA: **Spatial-temporal patterns of retinal waves underlying activity-dependent refinement of retinofugal projections.** *Neuron* 2009, **64**:200–212. doi:10.1016/j.neuron.2009.09.021.
19. Sun C, Warland DK, Ballesteros JM, van der List D, Chalupa LM: **Retinal waves in mice lacking the beta2 subunit of the nicotinic acetylcholine receptor.** *Proc Natl Acad Sci USA* 2008, **105**:13638–13643. doi:10.1073/pnas.0807178105.
20. McLaughlin T, Torborg CL, Feller MB, O'Leary DDM: **Retinotopic map refinement requires spontaneous retinal waves during a brief critical period of development.** *Neuron* 2003, **40**:1147–1160. doi:10.1016/S0896-6273(03)00790-6.
21. Sun C, Speer CM, Wang G-Y, Chapman B, Chalupa LM: **Epibatidine application in vitro blocks retinal waves without silencing all retinal ganglion cell action potentials in developing retina of the mouse and ferret.** *J Neurophysiol* 2008, **100**:3253–3263. doi:10.1152/jn.90303.2008.
22. Torborg C, Wang C-T, Muir-Robinson G, Feller MB: **L-type calcium channel agonist induces correlated depolarizations in mice lacking the beta2 subunit nAChRs.** *Vision Res* 2004, **44**:3347–3355. doi:10.1016/j.visres.2004.08.015.
23. Hansen KA, Torborg CL, Elstrott J, Feller MB: **Expression and function of the neuronal gap junction protein connexin 36 in developing mammalian retina.** *J Comp Neurol* 2005, **493**:309–320. doi:10.1002/cne.20759.
24. Torborg CL, Hansen KA, Feller MB: **High frequency, synchronized bursting drives eye-specific segregation of retinogeniculate projections.** *Nat Neurosci* 2005, **8**:72–78. doi:10.1038/nn1376.
25. Meister M, Wong RO, Baylor DA, Shatz CJ: **Synchronous bursts of action potentials in ganglion cells of the developing mammalian retina.** *Science* 1991, **252**:939–943. doi:10.1126/science.2035024.
26. Xu H-P, Furman M, Mineur YS, Chen H, King SL, Zenisek D, Jimmy Zhou Z, Butts DA, Tian N, Picciotto MR, Crair MC: **An instructive role for patterned spontaneous retinal activity in mouse visual map development.** *Neuron* 2011, **70**:1115–1127. doi:10.1016/j.neuron.2011.04.028.
27. Bonomini MP, Ferrandez JM, Bolea JA, Fernandez E: **DATA-MEANS: an open source tool for the classification and management of neural ensemble recordings.** *J Neurosci Methods* 2005, **148**:137–146. doi:10.1016/j.jneumeth.2005.04.008.
28. Bologna LL, Pasquale V, Garofalo M, Baljon PL, Maccione A, Martinoia S, Chiappalone M: **Investigating neuronal activity by SPYCODE multi-channel data analyzer.** *Neural Netw* 2010, **23**:685–697. doi:10.1016/j.neunet.2010.05.002.
29. Wong RO, Meister M, Shatz CJ: **Transient period of correlated bursting activity during development of the mammalian retina.** *Neuron* 1993, **11**:923–938. doi:10.1016/0896-6273(93)90122-8.
30. Sernagor E, Grzywacz NM: **Influence of spontaneous activity and visual experience on developing retinal receptive fields.** *Curr Biol* 1996, **6**:1503–1508. doi:10.1016/s0960-9822(96)00755-5.
31. Feller MB, Wellis DP, Stellwagen D, Werblin FS, Shatz CJ: **Requirement for cholinergic synaptic transmission in the propagation of spontaneous retinal waves.** *Science* 1996, **272**:1182–1187. doi:10.1126/science.272.5265.1182.
32. Bansal A, Singer JH, Hwang BJ, Xu W, Beaudet A, Feller MB: **Mice lacking specific nicotinic acetylcholine receptor subunits exhibit dramatically altered spontaneous activity patterns and reveal a limited role for retinal waves in forming ON and OFF circuits in the inner retina.** *J Neurosci* 2000, **20**:7672–7681.
33. **CARMEN Portal Home Page.** [https://portal.carmen.org.uk].
34. Jessop M, Weeks M, Austin J: **CARMEN: a practical approach to metadata management.** *Philos Trans A Math Phys Eng Sci* 2010, **368**:4147–4159. doi:10.1098/rsta.2010.0147.
35. Weeks M, Jessop M, Fletcher M, Hodge V, Jackson T, Austin J: **The CARMEN software as a service infrastructure.** *Philos Trans A Math Phys Eng Sci* 2013, **371**:20120080. doi:10.1098/rsta.2012.0080.

36. Liang B, Simonotto J, Knowles A, Fletcher M: **The Neurophysiology Data Translation Format (NDF) Specification — V1.2.1.** 2010. [http://www.carmen.org.uk/standards/CarmenDataSpecs.pdf].
37. Feller MB: **Retinal waves are likely to instruct the formation of eye-specific retinogeniculate projections.** *Neural Dev* 2009, **4**:24. doi:10.1186/1749-8104-4-24.
38. Chalupa LM: **Retinal waves are unlikely to instruct the formation of eye-specific retinogeniculate projections.** *Neural Dev* 2009, **4**:25. doi:10.1186/1749-8104-4-25.
39. Novellino A, Scelfo B, Palosaari T, Price A, Sobanski T, Shafer TJ, Johnstone AFM, Gross GW, Gramowski A, Schroeder O, Jügel K, Chiappalone M, Benfenati F, Martinoia S, Tedesco MT, Defranchi E, D'Angelo P, Whelan M: **Development of micro-electrode array based tests for neurotoxicity assessment of interlaboratory reproducibility with neuroactive chemicals.** *Front Neuroeng* 2011, **4**:4. doi:10.3389/fneng.2011.00004.
40. MacLaren EJ, Charlesworth P, Coba MP, Grant SGN: **Knockdown of mental disorder susceptibility genes disrupts neuronal network physiology in vitro.** *Mol Cell Neurosci* 2011, **47**:93–99. doi:10.1016/j.mcn.2010.12.014.
41. Teeters JL, Benda J, Davison AP, Eglen S, Gerhard S, Gerkin RC, Grewe J, Harris K, Jackson T, Mouček R, Pröpfer R, Sessions HL, Smith LS, Sobolev A, Sommer FT, Stoewer A, Wachtler T: **Considerations for developing a standard for storing electrophysiology data in HDF5.** *Front Neuroinform* 2013. doi:10.3389/conf.fninf.2013.09.00069.
42. Xie Y: *Dynamic Documents with R and Knitr.* Chapman & Hall/CRC The R Series. Boca Raton: Taylor & Francis; 2013.
43. Eglen SJ, Weeks M, Jessop M, Simonotto J, Jackson T, Sernagor E: **Supporting Material for “A data repository and analysis framework for spontaneous neural activity recordings in developing retina”.** *Gigascience Database*. http://dx.doi.org/10.5524/100089.
44. Quiroga RQ, Nadasdy Z, Ben-Shaul Y: **Unsupervised spike detection and sorting with wavelets and superparamagnetic clustering.** *Neural Comput* 2004, **16**:1661–1687. doi:10.1162/089976604774201631.
45. Litke A, Bezayiff N, Chichilnisky EJ, Cunningham W, Dabrowski W, Grillo A, Grivich M, Grybos P, Hottowy P, Kachiguine S, Kalmar RS, Mathieson K, Petrusca D, Rahman M, Sher A: **What does the eye tell the brain?: development of a system for the large-scale recording of retinal output activity.** *IEEE Trans Nucl Sci* 2004, **51**:1434–1440. doi:10.1109/TNS.2004.832706.

doi:10.1186/2047-217X-3-3

Cite this article as: Eglen et al.: A data repository and analysis framework for spontaneous neural activity recordings in developing retina. *GigaScience* 2014 **3**:3.

Submit your next manuscript to BioMed Central and take full advantage of:

- Convenient online submission
- Thorough peer review
- No space constraints or color figure charges
- Immediate publication on acceptance
- Inclusion in PubMed, CAS, Scopus and Google Scholar
- Research which is freely available for redistribution

Submit your manuscript at
www.biomedcentral.com/submit

