

A discipline of knowledge and the graphical law

Anindya Kumar Biswas, Department of Physics;
North-Eastern Hill University, Mawkynroh-Umshing, Shillong-793022.
email:anindya@nehu.ac.in

August 6, 2014

Abstract

We study English dictionaries of five subjects. We draw in the log scale, number of entries starting with an alphabet vs rank of the alphabet, both normalised. We find that the graphs are closer to the curves of reduced magnetisation vs reduced temperature for various approximations of Ising model.

I Introduction and Results

Magnetisation and linguistics are two widely separated distinct areas of academic investigations. It was interesting to find a curve of magnetisation existing beneath a written natural language, [1]. The author has studied the word (and verb,adverb,adjective) contents along the letters in a language. The letters were arranged in ascending order of their ranks from the rank one. The letter with the highest number of words starting with, was taken as of rank one. For a natural language, a dictionary from it to English, was a natural choice for that type of study. The author has found that behind each language which was subjected to study, there is a curve of magnetisation. From that the author has conjectured that behind any written natural language there are curves of magnetisation, for words, verbs, adverbs and adjectives respectively. The graphical law was found also to exist in the contemporary chinese usages.

In this work, we continue our search for the graphical law into various disciplines of knowledge. We describe how a graphical law is hidden within a subject in this article. We take the dictionary of five subjects,[2]-[6]. These are science, philosophy, sociology, law and construction. Then we count the independent entries, one by one from the beginning to the end, starting with different alphabets. For science, highest number of entries occur for the alphabet C , lowest for Y . For philosophy, highest number of entries occur for the alphabet C , lowest for X . For sociology, highest number of entries occur for the alphabet S , lowest for Y . For law, highest number of entries occur for the alphabet C , lowest for X . For construction, highest number of entries occur for the alphabet S ,

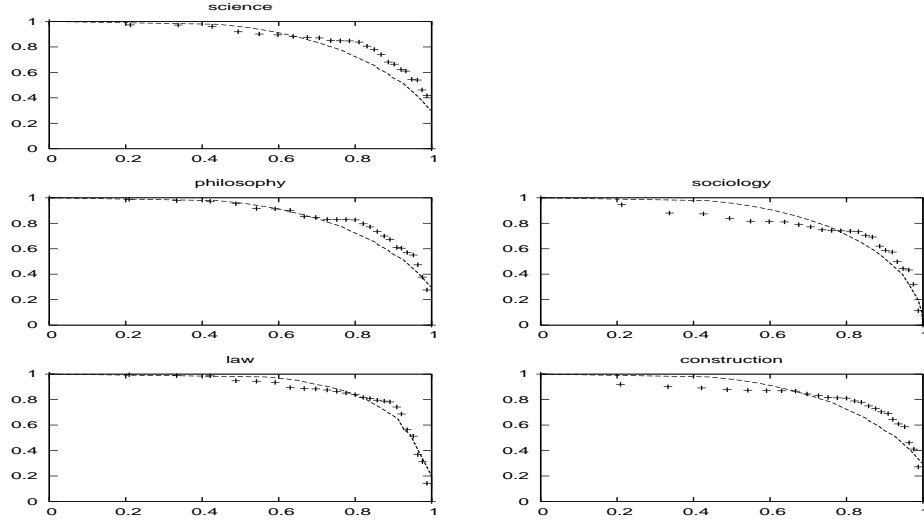


Figure 1: Vertical axis is $\frac{\ln f}{\ln f_{max}}$ and horizontal axis is $\frac{\ln k}{\ln k_{lim}}$. The + points stands for the subject represented by the titles. For law the reference curve is Bethe line for four neighbours. For sociology the comparator is Bragg-Williams line in absence of magnetic field. For the rest the fit curve is Bragg-Williams in presence of little magnetic field.

lowest for X . Then, we assort the alphabets according to their rankings. For science, the alphabet C has the lowest rank one and the rank of the alphabet Y is twentyfive. We take natural logarithm of both number of entries, denoted by f and the respective rank, denoted by k . k is a positive integer starting from one. Since each subject has an alphabet, number of occurrences initiating with it being very close to one or, one, we attach a limiting rank, k_{lim} , and a limiting number of occurrences for each subject. The limiting rank is just maximum rank (maximum rank plus one) if it is one (close to one) and the limiting number of entries, f_{lim} , is one. For science k_{lim} is twentysix, f_{lim} is one and f_{max} is one thousand one hundred fifty seven. As a result, when k varies from one to k_{lim} , f varies from f_{max} to one. In other words, $\frac{\ln f}{\ln f_{max}}$ varies from one to zero with $\frac{\ln k}{\ln k_{lim}}$ changing from zero to one. Then we plot $\frac{\ln f}{\ln f_{max}}$ against $\frac{\ln k}{\ln k_{lim}}$. This is fig.1. We have plotted the points using gnuplot, availing of using facility. Datas for each subject is appended at the end of the paper.

On each plot we superimpose a reference curve. The reference curves are obtained from the magnetisation vs temperature curves available from the theory of magnetisation, in particular, from the theory of Ising model. We restrict, moreover, to the Bragg-Williams and Bethe-Peierls approximations of the model. A brief Introduction of the Ising model is given in the appendix.

However, we observe that the points belonging to subjects are not matched with respective comparators fully in fig.1. We notice that the Bragg-Williams line in

presence of little magnetic field is nearest fit to the resulting points for science, philosophy and construction. For sociology the comparator is Bragg-Williams line in absence of magnetic field. Bethe line for four neighbours is the relevant curve for law.

Naturally, we try doing higher order normalisations with $lnf_{nextmax}$, $lnf_{nextnextmax}$, $lnf_{nextnextnextmax}$ and try to see whether fits improve and if so whether two consecutive fits agree. We do it in the following way. We ignore the letters with the highest number of occurrences and redo the plot, normalising the $lnfs$ with next-to-maximum $lnf_{nextmax}$, and starting from $k = 2$. The resulting points come closer to the reference magnetisation curves. We observe, in fig.2, that points for the subject sociology now align with Bragg-Williams line in presence of little magnetic field whereas, for construction, new reference line is $\gamma = 4.1$ Bethe curve.

We then ignore the letters with the highest and next highest number of occurrences and redo the plot, normalising the $lnfs$ with next-to-next-to-maximum $lnf_{nextnextmax}$, and starting from $k = 3$. We see, in the fig.3, that points come closer for the subject sociology to Bethe line for $\gamma = 4$. For construction, reference line remains $\gamma = 4.1$ Bethe curve, with points coming closer.

Looking for better fits, we then ignore the letters with the highest, next highest number and next to next highest number of occurrences and redo the plot, normalising the $lnfs$ with next-to-next-to-maximum $lnf_{nextnextnextmax}$, and starting from $k = 4$. For sociology Bethe line for $\gamma = 4$ continues to be the reference line, albeit closer, in the fig.4. For construction, points have veered little bit towards Bethe line for $\gamma = 4.2$ though the degree of fitness has decreased. For the subject construction, Bethe line for $\gamma = 4.1$ in fig.3 has got the best visual fit.

For science, successive normalisations have brought the points closer and closer to Bethe line for $\gamma = 4.05$ in fig.2 \rightarrow fig.4. Similarly, For philosophy, successive normalisations have gotten the points closer and closer to Bethe line for $\gamma = 4$ in fig.2 \rightarrow fig.4. Whereas, for law, successive normalisations have aligned the points closer and closer to Bethe line for $\gamma = 4$ in fig.1 \rightarrow fig.4.

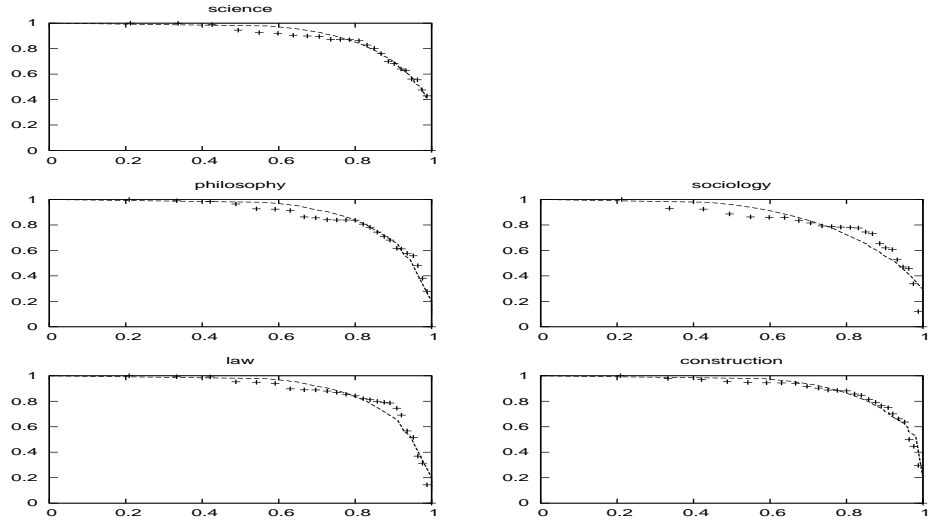


Figure 2: Vertical axis is $\frac{\ln f}{\ln f_{nextmax}}$ and horizontal axis is $\frac{\ln k}{\ln k_{lim}}$. The + points is for the subject in the titles. The Bethe lines are the reference curves for law and philosophy with $\gamma = 4$, for science with $\gamma = 4.05$ and for construction with $\gamma = 4.1$. For sociology, the fit curve is Bragg-Williams in presence of little magnetic field.

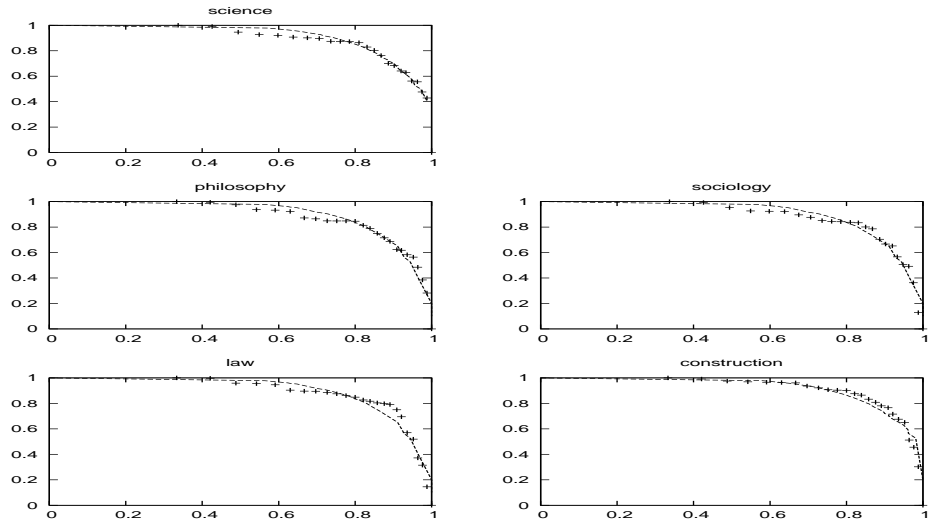


Figure 3: The + points represent the subjects as represented by the titles. Vertical axis is $\frac{\ln f}{\ln f_{nextnextmax}}$ and horizontal axis is $\frac{\ln k}{\ln k_{lim}}$. The Bethe lines are the reference curves for law, philosophy and sociology with $\gamma = 4$, for science with $\gamma = 4.05$ and for construction with $\gamma = 4.1$.

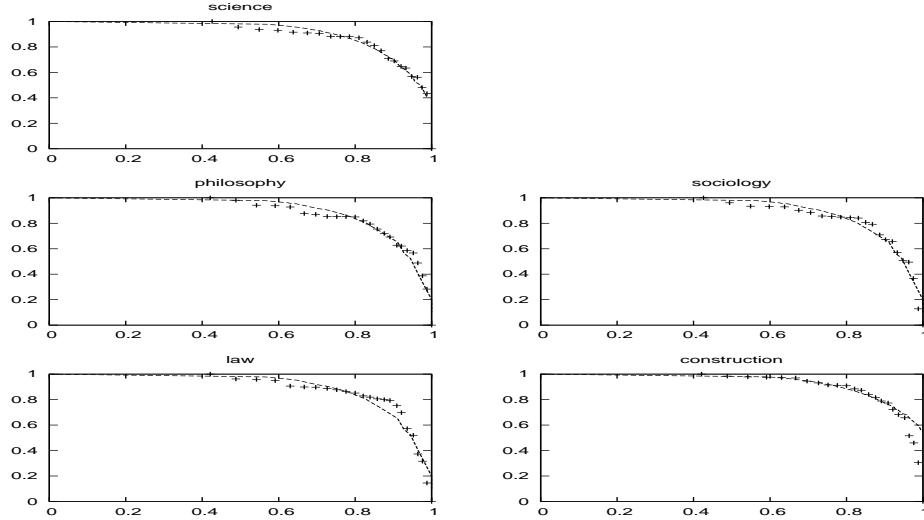


Figure 4: The + points represent the subjects as represented by the titles. Vertical axis is $\frac{\ln f}{\ln f_{\text{nestneztneztmax}}}$ and horizontal axis is $\frac{\ln k}{\ln k_{\text{lim}}}$. The Bethe lines are the reference curves for law, philosophy and sociology with $\gamma = 4$, for science with $\gamma = 4.05$ and for construction with $\gamma = 4.2$.

II Conclusion

From the figures (fig.1-fig.4), we observe that there are curves of magnetisation, behind each subject, enabling us to put the five subjects, depending on the best visual fits, in the following classification

science	philosophy	sociology	law	construction
Bethe(4.05)	Bethe(4)	Bethe(4)	Bethe(4)	Bethe(4.1)

In other words, we conclude that the graphical law exists beneath the subjects, [2]-[6]. The associated correspondances are,

$$\frac{\ln f}{\text{Normaliser}} \longleftrightarrow \frac{M}{M_{\text{max}}},$$

$$\frac{\ln k}{\ln k_{\text{lim}}} \longleftrightarrow \frac{T}{T_c}.$$

Moreover, k corresponds to temperature in an exponential scale, [7]. As temperature decreases, i.e. $\ln k$ decreases, f increases. The alphabets which are recording higher entries compared to those which have lesser entries are at lower temperature. As a subject expands, the alphabets which get enriched more and

more, fall at lower and lower temperatures. This is a manifestation of cooling effect, as was first observed in [8], in another way.

III Acknowledgement

We would like to thank NEHU library for allowing us to use dictionary of Law and Administration, [6].

IV appendix

IV.1 datas

IV.1.1 Science

k	lnk	lnk/lnk _{lim}	f	lnf	lnf/lnf _{max}	lnf/lnf _{nextmax}	lnf/lnf _{nextnextmax}	lnf/lnf _{nextnextnextmax}
1	0	0	1157	7.05	1	Blank	Blank	Blank
2	0.69	0.212	955	6.86	0.973	1	Blank	Blank
3	1.10	0.337	943	6.85	0.972	0.999	1	Blank
4	1.39	0.426	877	6.78	0.962	0.988	0.990	1
5	1.61	0.494	655	6.48	0.919	0.945	0.946	0.956
6	1.79	0.549	573	6.35	0.901	0.926	0.927	0.937
7	1.95	0.598	551	6.31	0.895	0.920	0.921	0.931
8	2.08	0.638	497	6.21	0.881	0.905	0.907	0.916
9	2.20	0.675	478	6.17	0.875	0.899	0.901	0.910
10	2.30	0.706	464	6.14	0.871	0.895	0.896	0.906
11	2.40	0.736	400	5.99	0.850	0.873	0.874	0.883
12	2.48	0.761	394	5.98	0.848	0.872	0.873	0.882
13	2.56	0.785	391	5.97	0.847	0.870	0.872	0.881
14	2.64	0.810	367	5.91	0.838	0.862	0.863	0.872
15	2.71	0.831	292	5.68	0.806	0.828	0.829	0.838
16	2.77	0.850	244	5.50	0.780	0.802	0.803	0.811
17	2.83	0.868	185	5.22	0.740	0.761	0.762	0.770
18	2.89	0.887	122	4.80	0.681	0.700	0.701	0.708
19	2.94	0.902	108	4.68	0.664	0.682	0.683	0.690
20	3.00	0.920	81	4.39	0.623	0.640	0.641	0.647
21	3.04	0.933	74	4.30	0.610	0.627	0.628	0.634
22	3.09	0.948	47	3.85	0.546	0.561	0.562	0.568
23	3.14	0.963	45	3.81	0.540	0.555	0.556	0.562
24	3.18	0.975	26	3.26	0.462	0.475	0.476	0.481
25	3.22	0.988	19	2.94	0.417	0.429	0.429	0.434
26	3.26	1	1	0	0	0	0	0

IV.1.2 Philosophy

k	lnk	lnk/lnk _{lim}	f	lnf	lnf/lnf _{max}	lnf/lnf _{next-max}	lnf/lnf _{next-next-max}	lnf/lnf _{next-next-next-max}
1	0	0	344	5.84	1	Blank	Blank	Blank
2	0.69	0.209	321	5.77	0.988	1	Blank	Blank
3	1.10	0.333	301	5.71	0.978	0.990	1	Blank
4	1.39	0.421	293	5.68	0.973	0.984	0.995	1
5	1.61	0.488	262	5.57	0.954	0.965	0.975	0.981
6	1.79	0.542	211	5.35	0.916	0.927	0.937	0.942
7	1.95	0.591	206	5.33	0.913	0.924	0.933	0.938
8	2.08	0.630	194	5.27	0.902	0.913	0.923	0.928
9	2.20	0.667	146	4.98	0.853	0.863	0.872	0.877
10	2.30	0.697	140	4.94	0.846	0.856	0.865	0.870
11	2.40	0.727	128	4.85	0.830	0.841	0.849	0.854
12	2.48	0.752	127	4.84	0.829	0.839	0.848	0.852
13	2.56	0.776	126	4.84	0.829	0.839	0.848	0.852
14	2.64	0.800	125	4.83	0.827	0.837	0.846	0.850
15	2.71	0.821	105	4.65	0.796	0.806	0.814	0.819
16	2.77	0.839	91	4.51	0.772	0.782	0.790	0.794
17	2.83	0.858	73	4.29	0.735	0.744	0.751	0.755
18	2.89	0.876	60	4.09	0.700	0.709	0.716	0.720
19	2.94	0.891	51	3.93	0.673	0.681	0.688	0.692
20	3.00	0.909	35	3.56	0.610	0.617	0.623	0.627
21	3.04	0.921	34	3.53	0.604	0.612	0.618	0.621
22	3.09	0.936	28	3.33	0.570	0.577	0.583	0.586
23	3.14	0.952	25	3.22	0.551	0.558	0.564	0.567
24	3.18	0.964	16	2.77	0.474	0.480	0.485	0.488
25	3.22	0.976	9	2.20	0.377	0.381	0.385	0.387
26	3.26	0.988	5	1.61	0.276	0.279	0.282	0.283
27	3.30	1	1	0	0	0	0	0

IV.1.3 Sociology

k	lnk	lnk/lnk _{lim}	f	lnf	lnf/lnf _{max}	lnf/lnf _{nextmax}	lnf/lnf _{nextnextmax}	lnf/lnf _{nextnextnextmax}
1	0	0	445	6.10	1	Blank	Blank	Blank
2	0.69	0.212	322	5.77	0.946	1	Blank	Blank
3	1.10	0.337	215	5.37	0.880	0.931	1	Blank
4	1.39	0.426	207	5.33	0.874	0.924	0.993	1
5	1.61	0.494	167	5.12	0.839	0.887	0.953	0.961
6	1.79	0.549	145	4.98	0.816	0.863	0.927	0.934
7	1.95	0.598	142	4.96	0.813	0.860	0.924	0.931
8	2.08	0.638	141	4.95	0.811	0.858	0.922	0.929
9	2.20	0.675	123	4.81	0.789	0.834	0.896	0.902
10	2.30	0.706	111	4.71	0.772	0.816	0.877	0.884
11	2.40	0.736	97	4.57	0.749	0.792	0.851	0.857
12	2.48	0.761	94	4.54	0.744	0.787	0.845	0.852
13	2.56	0.785	92	4.52	0.741	0.783	0.842	0.848
14	2.64	0.810	90	4.50	0.738	0.780	0.838	0.844
15	2.71	0.831	88	4.48	0.734	0.776	0.834	0.841
16	2.77	0.850	74	4.30	0.705	0.745	0.801	0.807
17	2.83	0.868	68	4.22	0.692	0.731	0.786	0.792
18	2.89	0.887	44	3.78	0.620	0.655	0.704	0.709
19	2.94	0.902	36	3.58	0.587	0.620	0.667	0.672
20	3.00	0.920	33	3.50	0.574	0.607	0.652	0.657
21	3.04	0.933	21	3.04	0.498	0.527	0.566	0.570
22	3.09	0.948	15	2.71	0.444	0.470	0.505	0.508
23	3.14	0.963	14	2.64	0.433	0.458	0.492	0.495
24	3.18	0.975	7	1.95	0.320	0.338	0.363	0.366
25	3.22	0.988	2	0.69	0.113	0.120	0.128	0.128
26	3.26	1	1	0	0	0	0	0

IV.1.4 Construction

k	lnk	lnk/lnk _{lim}	f	lnf	lnf/lnf _{max}	lnf/lnf _{next-max}	lnf/lnf _{next-next-max}	lnf/lnf _{next-next-next-max}
1	0	0	1289	7.16	1	Blank	Blank	Blank
2	0.69	0.209	727	6.59	0.920	1	Blank	Blank
3	1.10	0.333	634	6.45	0.901	0.979	1	Blank
4	1.39	0.421	593	6.39	0.892	0.970	0.991	1
5	1.61	0.488	539	6.29	0.878	0.954	0.975	0.984
6	1.79	0.542	519	6.25	0.873	0.948	0.969	0.978
7	1.95	0.591	508	6.23	0.870	0.945	0.966	0.975
8	2.08	0.630	501	6.22	0.869	0.944	0.964	0.973
9	2.20	0.667	495	6.20	0.866	0.941	0.961	0.970
10	2.30	0.697	421	6.04	0.844	0.917	0.936	0.945
11	2.40	0.727	385	5.95	0.831	0.903	0.922	0.931
12	2.48	0.752	347	5.85	0.817	0.888	0.907	0.915
13	2.56	0.776	340	5.83	0.814	0.885	0.904	0.912
14	2.64	0.800	335	5.81	0.811	0.882	0.901	0.909
15	2.71	0.821	283	5.65	0.789	0.857	0.876	0.884
16	2.77	0.839	265	5.58	0.779	0.847	0.865	0.873
17	2.83	0.858	214	5.37	0.750	0.815	0.833	0.840
18	2.89	0.876	185	5.22	0.729	0.792	0.809	0.817
19	2.94	0.891	154	5.04	0.704	0.765	0.781	0.789
20	3.00	0.909	140	4.94	0.690	0.750	0.766	0.773
21	3.04	0.921	102	4.62	0.645	0.701	0.716	0.723
22	3.09	0.936	78	4.36	0.609	0.662	0.676	0.682
23	3.14	0.952	67	4.20	0.587	0.637	0.651	0.657
24	3.18	0.964	27	3.30	0.461	0.501	0.512	0.516
25	3.22	0.976	19	2.94	0.411	0.446	0.456	0.460
26	3.26	0.988	7	1.95	0.296	0.279	0.302	0.305
27	3.30	1	1	0	0	0	0	0

IV.1.5 Law

k	lnk	lnk/lnk _{lim}	f	lnf	lnf/lnf _{max}	lnf/lnf _{next-max}	lnf/lnf _{next-next-max}	lnf/lnf _{next-next-next-max}
1	0	0	2203	7.70	1	Blank	Blank	Blank
2	0.69	0.209	2115	7.66	0.995	1	Blank	Blank
3	1.10	0.333	2015	7.61	0.988	0.993	1	Blank
4	1.39	0.421	1977	7.59	0.986	0.991	0.997	1
5	1.61	0.488	1473	7.30	0.948	0.953	0.959	0.962
6	1.79	0.542	1435	7.27	0.944	0.949	0.955	0.958
7	1.95	0.591	1342	7.20	0.935	0.940	0.946	0.949
8	2.08	0.630	970	6.88	0.894	0.898	0.904	0.906
9	2.20	0.667	917	6.82	0.886	0.890	0.896	0.899
10	2.30	0.697	907	6.81	0.884	0.889	0.895	0.897
11	2.40	0.727	842	6.74	0.875	0.880	0.886	0.888
12	2.48	0.752	781	6.66	0.865	0.869	0.875	0.877
13	2.56	0.776	698	6.55	0.851	0.855	0.861	0.863
14	2.64	0.800	642	6.46	0.839	0.843	0.849	0.851
15	2.71	0.821	538	6.29	0.817	0.821	0.827	0.829
16	2.77	0.839	501	6.22	0.808	0.812	0.817	0.819
17	2.83	0.858	449	6.12	0.795	0.799	0.804	0.806
18	2.89	0.876	433	6.07	0.788	0.792	0.798	0.800
19	2.94	0.891	412	6.02	0.782	0.786	0.791	0.793
20	3.00	0.909	302	5.71	0.742	0.745	0.750	0.752
21	3.04	0.921	199	5.29	0.687	0.691	0.695	0.697
22	3.09	0.936	77	4.34	0.564	0.567	0.570	0.572
23	3.14	0.952	52	3.95	0.513	0.516	0.519	0.520
24	3.18	0.964	17	2.83	0.368	0.369	0.372	0.373
25	3.22	0.976	11	2.40	0.312	0.313	0.315	0.316
26	3.26	0.988	3	1.10	0.143	0.144	0.145	0.145
27	3.30	1	1	0	0	0	0	0

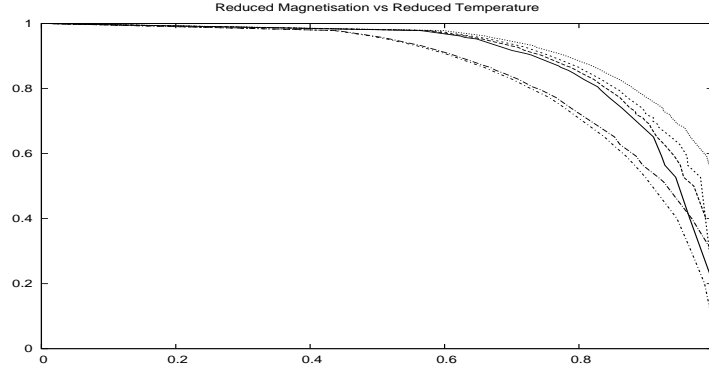


Figure 5: Reduced magnetisation vs reduced reduced temperature for Bragg-Williams(lower two curves, outer one in presence of magnetic field, $c = 0.01$), Bethe(upper lines, for $\gamma = 4, 4.05, 4.1, 4.2$, outward). Vertical axis refers to reduced magnetisation and horizontal axis represents reduced temperature.

IV.2 Magnetisation

We give a brief introduction to the magnetisation curves of Ising model. Ising model is a classical model of lattice of interacting spins at a particular ambient temperature. Each spin has a magnetic moment associated with it. The net magnetic moment of the lattice is referred to as the magnetisation. For an Ising model, in Bragg-Williams approximation([9], [10]), spontaneous magnetisation per lattice site, in unit of Bohr magneton, or, reduced spontaneous magnetisation, $\frac{M}{M_{max}}$ is \bar{L}_0 . \bar{L}_0 ranges from zero to one in magnitude. Variation of magnetisation with reduced temperature, $\frac{T}{T_c}$, is given by

$$\ln \frac{1 + \bar{L}_0}{1 - \bar{L}_0} = \frac{2(\bar{L}_0 + c)}{\frac{T}{T_c}}. \quad (1)$$

Plot of \bar{L}_0 vs $\frac{T}{T_c}$ is used as reference curve. In the presence of magnetic field, $c \neq 0$, the curve bulges outward. Bragg-Williams is a Mean Field approximation. In an approximation scheme which is improvement over the Bragg-Williams, due to Bethe-Peierls, [9], reduced magnetisation varies with reduced temperature, for γ neighbours, as

$$\frac{0.693}{\ln \frac{factor-1}{factor^{\frac{\gamma-1}{\gamma}} - factor^{\frac{1}{\gamma}}}} = \frac{T}{T_c}; factor = \frac{\frac{M}{M_{max}} + 1}{1 - \frac{M}{M_{max}}}. \quad (2)$$

The curves relevant for our study are shown in the same figure, fig.5. We use equations(1) and (2) to generate magnetisation vs temperature tables given here. We plot the tables and obtain the curves of magnetisation. For a snapshot of different kind of magnetisation curves for magnetic materials the reader is

urged to give a google search "reduced magnetisation vs reduced temperature curve".

IV.3 Reduced magnetisation vs reduced temperature datas

BW stands for reduced temperature in Bragg-Williams approximation, calculated from the equation(1). Bethe(4) represents reduced temperature in the Bethe-Peierls approximation, for four nearest neighbours, computed from the equation(2). The data set is used, partly, to plot fig.5. Empty spaces in the table mean corresponding point pairs were not used for plotting a line.

BW	BW(c=0.01)	Bethe(4)	reduced magnetisation
0	0	0	1
0.435	0.439	0.563	0.978
0.439	0.443	0.568	0.977
0.491	0.495	0.624	0.961
0.501	0.507	0.630	0.957
0.514	0.519	0.648	0.952
0.559	0.566	0.654	0.931
0.566	0.573	0.7	0.927
0.584	0.590	0.7	0.917
0.601	0.607	0.722	0.907
0.607	0.613	0.729	0.903
0.653	0.661	0.770	0.869
0.659	0.668	0.773	0.865
0.669	0.676	0.784	0.856
0.679	0.688	0.792	0.847
0.701	0.710	0.807	0.828
0.723	0.731	0.828	0.805
0.732	0.743	0.832	0.796
0.756	0.766	0.845	0.772
0.779	0.788	0.864	0.740
0.838	0.853	0.911	0.651
0.850	0.861	0.911	0.628
0.870	0.885	0.923	0.592
0.883	0.895	0.928	0.564
0.899	0.918		0.527
0.904	0.926	0.941	0.513
0.946	0.968	0.965	0.400
0.967	0.998	0.965	0.300
0.987		1	0.200
0.997		1	0.100
1	1	1	0

Bethe3.9	Bethe4.05	Bethe4.1	Bethe4.2	reduced magnetisation
0	0	0	0	1
0.550	0.574	0.582	0.598	0.978
0.553	0.577	0.585	0.602	0.977
0.605	0.632	0.640	0.662	0.961
0.616	0.642	0.653	0.669	0.957
0.625	0.656	0.666	0.683	0.952
0.667	0.699	0.712	0.734	0.931
0.674	0.709	0.720	0.736	0.927
0.687	0.719	0.734	0.753	0.917
0.703	0.736	0.748	0.771	0.907
0.709	0.743	0.754	0.777	0.903
0.746	0.782	0.795	0.820	0.869
0.750	0.788	0.800	0.824	0.865
0.758	0.796	0.807	0.833	0.856
0.764	0.804	0.816	0.841	0.847
0.783	0.822	0.833	0.860	0.828
0.796	0.837	0.851	0.878	0.805
0.803	0.844	0.859	0.884	0.796
0.819	0.861	0.872	0.901	0.772
0.834	0.876	0.894	0.925	0.740
0.840	0.884	0.898	0.926	0.730
	0.885	0.900	0.935	0.720
0.846	0.895		0.938	0.710
0.852	0.899	0.910	0.943	0.700
0.8611	0.905	0.917	0.947	0.690
0.8608	0.907	0.919	0.957	0.680
0.875	0.916	0.937	0.966	0.651
0.882	0.927	0.950	0.975	0.628
0.889	0.942	0.961	0.990	0.592
0.901	0.951	0.962	0.994	0.564
	0.956			0.527
0.905	0.971	0.971		0.500
	0.989			0.400
0.924				0.350
				0.300
0.938				0.250
0.944				0.200
0.960				0.150
0.9997				0.100
1	1	1	1	0

References

- [1] Anindya Kumar Biswas, "Graphical Law beneath each written natural language", arXiv:1307.6235v3[physics.gen-ph].
- [2] Oxford Dictionary of Science, edited by J. Daintith and E. Martin, sixth edition, 2010; Great Clarendon Street, Oxford OX26DP.
- [3] Simon Blackburn, Oxford Dictionary of Philosophy, second edition, 2008; Oxford University Press Inc. New York.
- [4] John Scott and G. Marshall, Oxford Dictionary of Sociology, third edition, 2009; Oxford University Press, Great Clarendon Street, Oxford OX26DP.
- [5] C. Gorse, D. Johnston and M. Pritchard; Oxford Dictionary of Construction, Surveying and Civil Engineering, 2012; Oxford University Press, Great Clarendon Street, Oxford OX26DP.
- [6] Dictionary of Law and Administration, 2000, National Law Development Foundation, Para Road, CCS Building, Shivpuram, Lucknow-17, India.
- [7] Sonntag, Borgnakke and Van Wylen, Fundamentals of Thermodynamics, p206-207, fifth edition, 2002, John Wiley and Sons Inc.
- [8] Alexander M. Petersen, Joel N. Tenenbaum, Shlomo Havlin, H. Eugene Stanley, and Matjaž Perc, "Languages cool as they expand: Allometric scaling and the decreasing need for new words,", Sci. Rep.2(2012) 943, arXiv:1212.2616v1. and references therein.
- [9] W. L. Bragg and E. J. Williams, Proc. Soc. London Ser. A 145,699(1934); Kerson Huang, Statistical Mechanics, second edition, John Wiley and Sons.
- [10] R. K. Pathria, Statistical Mechanics, Pergamon Press.