

# UC Berkeley

## UC Berkeley Previously Published Works

### Title

A genome-scale CRISPR interference guide library enables comprehensive phenotypic profiling in yeast.

### Permalink

<https://escholarship.org/uc/item/22b8762c>

### Journal

BMC genomics, 22(1)

### ISSN

1471-2164

### Authors

McGlinchy, Nicholas J  
Meacham, Zuriah A  
Reynaud, Kendra K  
[et al.](#)

### Publication Date

2021-03-01

### DOI

10.1186/s12864-021-07518-0


Peer reviewed

METHODOLOGY ARTICLE

Open Access



# A genome-scale CRISPR interference guide library enables comprehensive phenotypic profiling in yeast

Nicholas J. McGlinchy<sup>1</sup>, Zuriyah A. Meacham<sup>1</sup>, Kendra K. Reynaud<sup>1,2</sup>, Ryan Muller<sup>1</sup>, Rachel Baum<sup>1</sup> and Nicholas T. Ingolia<sup>1,2,3\*</sup> 

## Abstract

**Background:** CRISPR/Cas9-mediated transcriptional interference (CRISPRi) enables programmable gene knock-down, yielding loss-of-function phenotypes for nearly any gene. Effective, inducible CRISPRi has been demonstrated in budding yeast, and genome-scale guide libraries enable systematic, genome-wide genetic analysis.

**Results:** We present a comprehensive yeast CRISPRi library, based on empirical design rules, containing 10 distinct guides for most genes. Competitive growth after pooled transformation revealed strong fitness defects for most essential genes, verifying that the library provides comprehensive genome coverage. We used the relative growth defects caused by different guides targeting essential genes to further refine yeast CRISPRi design rules. In order to obtain more accurate and robust guide abundance measurements in pooled screens, we link guides with random nucleotide barcodes and carry out linear amplification by in vitro transcription.

**Conclusions:** Taken together, we demonstrate a broadly useful platform for comprehensive, high-precision CRISPRi screening in yeast.

**Keywords:** CRISPR interference, Budding yeast, Pooled screening

## Background

Systematic genetic analysis — the comprehensive assessment of phenotypes across a large and defined collection of genetic perturbations — is a powerful approach for learning the organizing principles of molecular and cellular processes. Systematic analyses provide quantitative phenotypic profiles that serve as a rich and nuanced source of information, as well as identifying key candidate genes in the manner of a classical genetic screen. Truly comprehensive, systematic analysis was realized first in budding yeast (*Saccharomyces cerevisiae*), with the creation of the deletion collection, an arrayed library

of ~ 6000 yeast strains that each contain one barcoded gene knock-out [1, 2]. Subsequently, RNA interference was harnessed for large-scale genetic analysis in many organisms [3, 4] and cell models [5]. More recently, programmable RNA-guided DNA targeting by Cas9 and other CRISPR-associated proteins has emerged as an enabling technology for systematic genetic analysis. In its native form, Cas9 cleaves DNA at sites complementary to a short guide RNA [6], often leading to mutations mediated by error-prone repair pathways [7]. Guide RNA libraries thereby enable comprehensive, targeted mutagenesis that offers advantages for comprehensive genetic screening [8].

Catalytically inactive Cas9 (dCas9) retains RNA-guided DNA binding activity that can be harnessed for many other purposes. When dCas9 is fused with another

\* Correspondence: [ingolia@berkeley.edu](mailto:ingolia@berkeley.edu)

<sup>1</sup>Department of Molecular and Cell Biology, Berkeley, CA 94720, USA

<sup>2</sup>Biophysics Graduate Group, University of California, Berkeley, CA 94720, USA

Full list of author information is available at the end of the article



© The Author(s). 2021 **Open Access** This article is licensed under a Creative Commons Attribution 4.0 International License, which permits use, sharing, adaptation, distribution and reproduction in any medium or format, as long as you give appropriate credit to the original author(s) and the source, provide a link to the Creative Commons licence, and indicate if changes were made. The images or other third party material in this article are included in the article's Creative Commons licence, unless indicated otherwise in a credit line to the material. If material is not included in the article's Creative Commons licence and your intended use is not permitted by statutory regulation or exceeds the permitted use, you will need to obtain permission directly from the copyright holder. To view a copy of this licence, visit <http://creativecommons.org/licenses/by/4.0/>. The Creative Commons Public Domain Dedication waiver (<http://creativecommons.org/publicdomain/zero/1.0/>) applies to the data made available in this article, unless otherwise stated in a credit line to the data.

protein, it targets this fusion partner to the genomic sequence specified by a guide RNA, enabling an array of novel approaches to measure and manipulate the genome [9]. Targeting co-repressor proteins to eukaryotic promoters leads to CRISPR-mediated transcriptional interference (CRISPRi), a powerful and general approach to reduce transcription from the targeted locus [10]. CRISPRi yields reproducible, partial loss-of-function phenotypes that are well suited for systematic genetic analysis [11, 12]. Essential genes can be analyzed easily with CRISPRi, and knock-down can be quickly activated and quickly relieved by conditional expression of the dCas9 fusion protein or the guide RNA. Genome-wide CRISPRi libraries are thus highly desirable even in budding yeast, where deletion collections and other resources are available.

Optimized tools exist to support CRISPRi screening in budding yeast. Transcriptional interference by dCas9-mediated recruitment of repressor domains was pioneered in yeast, and potent CRISPRi has been achieved with a dCas9-Mxi1 fusion that links dCas9 with a fragment of a mammalian repressor [10]. Single guide RNAs (sgRNAs) can be expressed from an RNA Polymerase III promoter taken from the yeast *RPR1* gene [13]. Furthermore, embedding tetracycline operator (tetO) sites in this promoter confers tetracycline-inducible guide expression, and thus regulated CRISPRi activity [13]. This inducible guide expression system has been used to create substantial collections of effective guides spanning up to ~1600 genes [14–18], which have provided rules for guide RNA design [14, 15, 19, 20]. In yeast, as in many eukaryotes, chromatin accessibility at a target DNA sequence and the position of this sequence relative to the transcription start site are key determinants of effective CRISPRi [14]. Guides binding nucleosome-free sites in the region 200 bp just upstream of the transcription start site were most likely to be active; although these two factors are correlated, each appears to be important individually.

Using these rules, we have generated and validated a genome-wide CRISPRi screening system for budding yeast. We first constructed a comprehensive library of episomal guide expression plasmids. In order to quantify guide abundance in screens, we link guide RNAs with random nucleotide barcodes and amplify these barcodes by *in vitro* transcription. We used this barcoded guide library to carry out a pooled growth screen in a continuous culture of prototrophic yeast in minimal synthetic media. Guides produced distinctive, reproducible fitness effects that could be inferred from exponential dynamics of their abundance during competitive growth. We found guides having strong growth defects for the great majority of essential genes, showing that our library provides excellent coverage. Comparisons of the active and

inactive guides allowed us to further refine design rules for yeast CRISPRi and better assign target genes to guide sites at closely-spaced, divergent promoters, which are common in yeast. Our system for high coverage, high efficacy inducible CRISPRi screening provides a broadly useful tool for the budding yeast community with numerous applications.

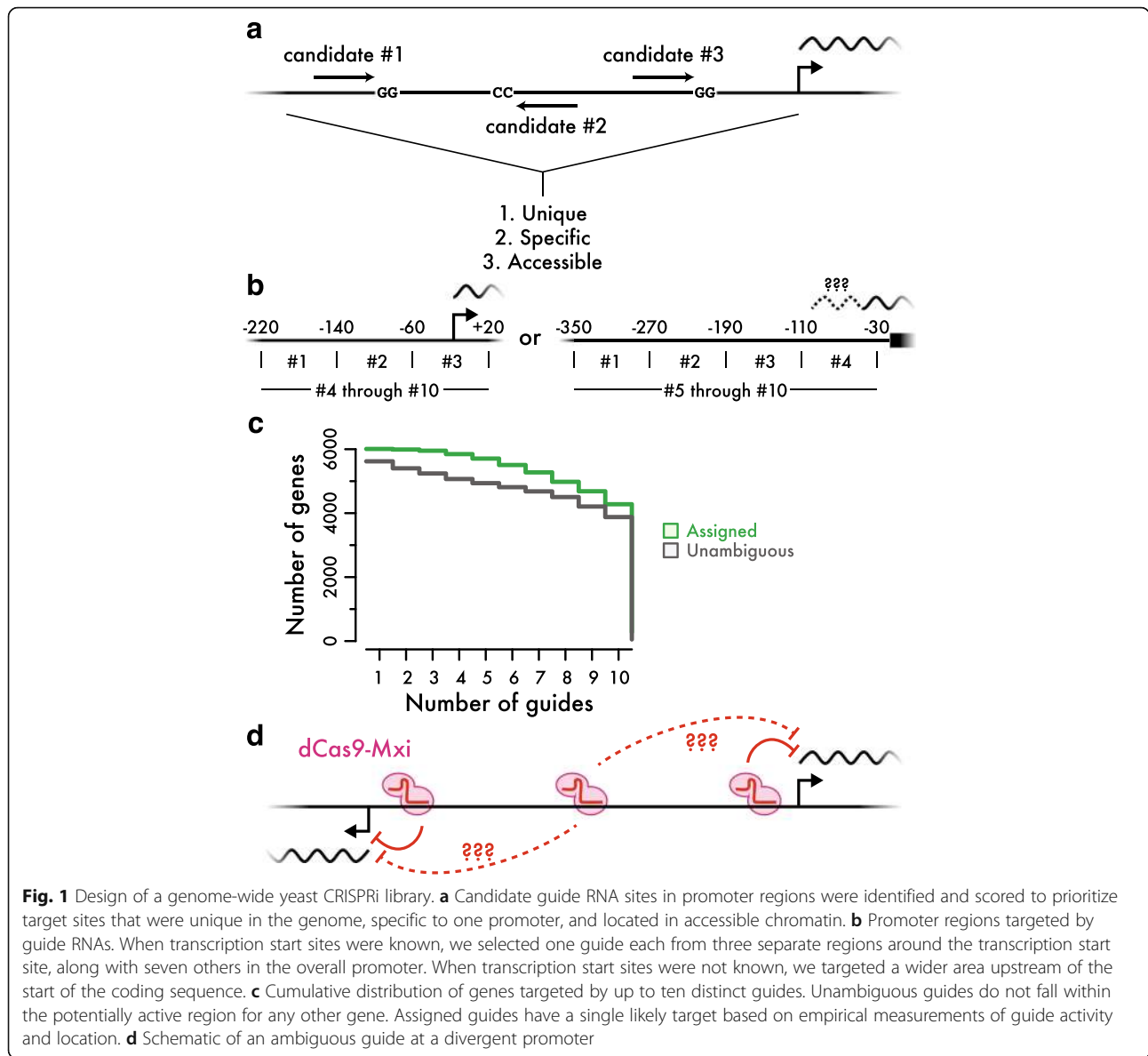
## Results

### Design of a guide RNA library for genome-wide CRISPRi in budding yeast

We set out to design a library of yeast guide RNAs suitable for genome-wide CRISPRi screening. In yeast, the efficiency of transcriptional interference is affected by the distance between the target sequence and the transcription start site and by the accessibility of the DNA at that target [14]. Even after controlling for these parameters, only a fraction of guide RNAs inhibit transcription effectively [14, 15, 19], and so we aimed to select up to ten guides for each of the annotated genes in the yeast genome [21].

We implemented a deterministic target site selection scheme based on heuristics that seemed likely to pick active and specific guides (Fig. 1a). We chose guides first by preferring target sequences that were unique in the genome, and target positions expected to inhibit transcription from one promoter specifically. We then prioritized guides according to accessibility as determined by ATAC-Seq [22]. We also ensured that our guides were distributed across the full range of positions where CRISPRi appears effective [14] by selecting at least one target site from each of a few different zones within the overall promoter region (Fig. 1b). When the transcription start site was known from transcript isoform sequencing [23], we picked targets in a range from 220 base pairs upstream of this transcriptional start through 20 nucleotides downstream [14]. When no transcriptional start site was available, we picked targets between 350 and 30 nucleotides upstream of the coding sequence. Using these rules, we designed 61,094 guides targeting all annotated protein-coding genes, excepting those predicted open reading frames characterized as “dubious”, and also against non-coding RNAs (Additional file 1: Table S1). The majority of genes were targeted by ten unique and unambiguous guides (Fig. 1c).

The compact yeast genome, containing many divergently transcribed genes separated by only a few hundred base pairs, poses challenges for guide design. Guides falling in the overlapping region between two divergently transcribed promoters have at least the potential to target either gene (Fig. 1d). Roughly 10% of the guides we selected were potentially ambiguous in this way, in addition to a very small fraction of non-unique guide sequences. Since the distance between a guide and



a promoter is a key determinant of its efficacy [15], we were able to assign many of these potentially ambiguous guides to one likely target. As described below, our own results corroborate this assignment based on large-scale empirical measures of guide activity, further enhancing our coverage of the genome.

**Linear amplification of guide-linked nucleotide barcodes by in vitro transcription enables precise measurements of guide frequency**

Pooled CRISPR screening relies on measurements of guide RNA abundance in a population of cells, typically carried out by high-throughput sequencing [12]. Phenotypic effects manifest as changes in these guide frequencies caused by competitive growth under different conditions or by flow cytometric sorting for specific

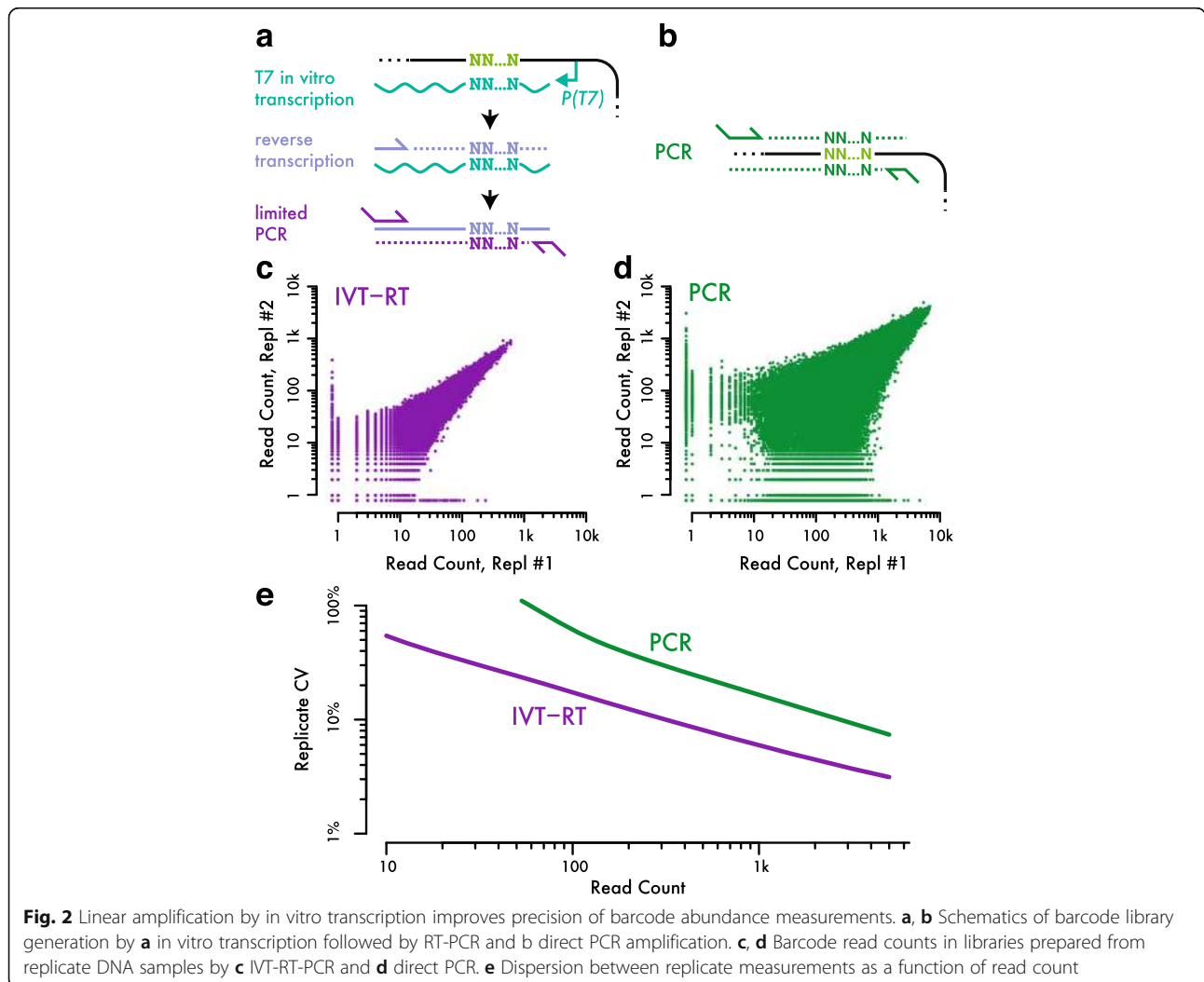
phenotypes. We therefore sought the most precise and robust approach to measure the abundance of guide RNA expression plasmids from yeast. Rather than sequencing guides directly, we used arbitrary nucleotide barcodes embedded in the guide RNA expression plasmid. One advantage of sequencing these barcodes is that each guide can be linked to a few different barcodes, providing replicate measurements of its effect within a single experiment [24, 25]. In contrast, direct guide sequencing cannot distinguish between independently transformed lineages within a single experiment. Barcode sequencing also allows us to distinguish defective guide RNA expression constructs, which typically cause no phenotypic effects, from sequencing errors arising during quantitation. We can detect and correct single-nucleotide sequencing errors that we observe when

quantifying barcodes while excluding barcodes linked to guides with errors introduced during synthesis or cloning.

High-throughput sequencing of barcodes (or guide RNAs) requires substantial, selective amplification of DNA recovered from cells. Pooled screening approaches typically use populations of 1 million to 100 million cells, each yielding one or a few copies of the DNA to be counted [12]. High-throughput sequencing requires roughly 10 billion input molecules, and the DNA samples recovered from cell pools are generally amplified at least a thousand-fold to create a sequencing library [26]. Exponential PCR can easily achieve this amplification, but also introduces multiplicative noise, and stochastic events occurring in early PCR cycles are amplified along with the underlying barcode abundances. Linear amplification by in vitro transcription offers an attractive alternative to PCR amplification [27] and has been used productively in single-cell DNA and RNA sequencing approaches [28–30]. We confirmed that in vitro

transcription of template plasmid isolated from budding yeast yielded ~ 5000-fold amplification over a wide range of template DNA amounts and tolerated substantial non-template DNA. Amplification by in vitro transcription is also specific for the promoter sequence embedded in the plasmid, in contrast to effective but non-specific amplification approaches used in single-cell genome sequencing [31].

We devised a strategy for measuring barcode abundance by sequencing, using initial linear amplification by in vitro transcription, that substantially reduced noise relative to direct PCR amplification (Fig. 2). The RNA product of in vitro transcription is reverse transcribed back into DNA (IVT-RT), which serves as a template for limited PCR that generates double-stranded DNA with flanking sequences required for high-throughput sequencing (Fig. 2a). In order to validate our IVT-RT library generation strategy and compare it directly with PCR amplification, we transformed yeast with a plasmid library containing ~ 250,000 random nucleotide



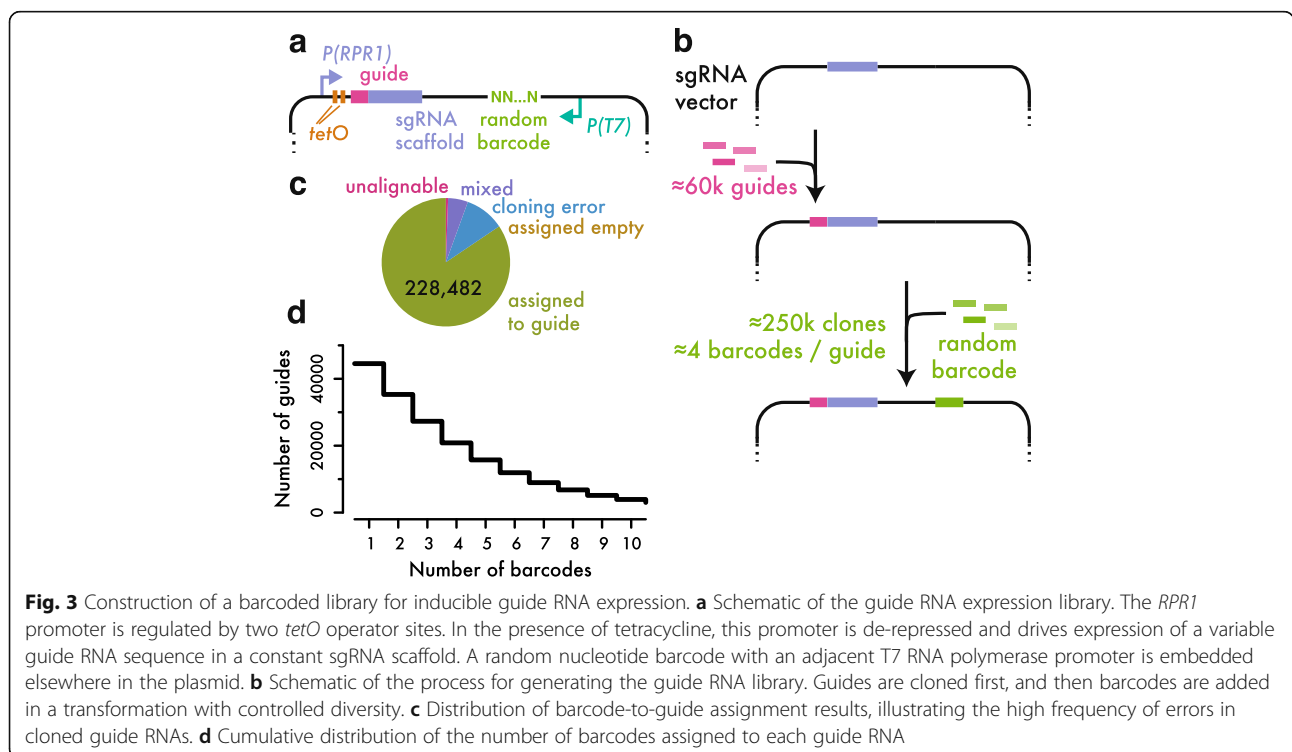
barcodes, carried out batch selection for transformants, and recovered plasmid DNA from two replicate samples drawn from this transformed population. IVT-RT libraries generated from these replicate DNA samples showed substantially better quantitative agreement than matched libraries constructed by direct PCR amplification (Fig. 2c, d). Duplicate IVT-RT libraries from the same population showed a correlation  $r = 0.98$ , whereas PCR libraries correlated substantially worse,  $r = 0.93$ . Dispersion estimates from replicate IVT-RT libraries showed markedly lower variances than matched PCR libraries at equivalent read depth (Fig. 2e), which translates into more precise guide abundance measurements and thus greater statistical power to resolve phenotypic differences.

**Construction of a barcoded, genome-wide library of inducible guide RNAs**

Based on these observations, we generated a genome-wide yeast CRISPRi guide expression library with linear IVT-RT amplification of linked nucleotide barcodes (Fig. 3a). Our library includes only the guide RNA cassette, and requires separate expression of the rest of the inducible CRISPRi machinery, as we found that smaller plasmids containing just the guide RNAs improved both the diversity of pooled transformations and the yield of subsequent plasmid recovery. We first introduced guide RNAs into a tetracycline-inducible derivative of a RNA polymerase III promoter in a high-efficiency, bacterial cloning reaction that maximized

library diversity (Fig. 3b and Additional file 2: Fig. S1). We then added barcodes in a second cloning step and controlled the yield of the bacterial transformation in order to capture an average of 4 barcodes per guide RNA (Fig. 3b and Additional file 2: Fig. S2). While greater barcode diversity is beneficial to a point, limiting the number of barcodes allows us to maintain a substantial number of cells per barcode, which is important for robust barcode counting, and to assign barcodes to guide RNAs reliably.

We linked each barcode to its associated guide by high-throughput sequencing. In order to ensure reliable guide RNA assignments, we required at least three independent, concordant sequencing reads to establish a barcode-to-guide assignment. This criterion should exclude cases where PCR amplification during library preparation “uncouples” a barcode from the associated guide RNA, which has been reported to confound a range of barcoded screening techniques [32]. We identified ~270,000 barcodes, in good agreement with our expectation for ~250,000 distinct clones in the library. We excluded ~10% of barcodes that were linked to guides with errors introduced in cloning and synthesis (Fig. 3c). The high rate of defective guides emphasizes the value of barcoded libraries, which can identify these ineffective constructs. We also eliminated barcodes with substantial evidence linking them to two distinct guide RNAs (~5% of the total), which probably reflect technical artifacts uncoupling the true, unique association [32]. Our final barcoded library included ~45,000



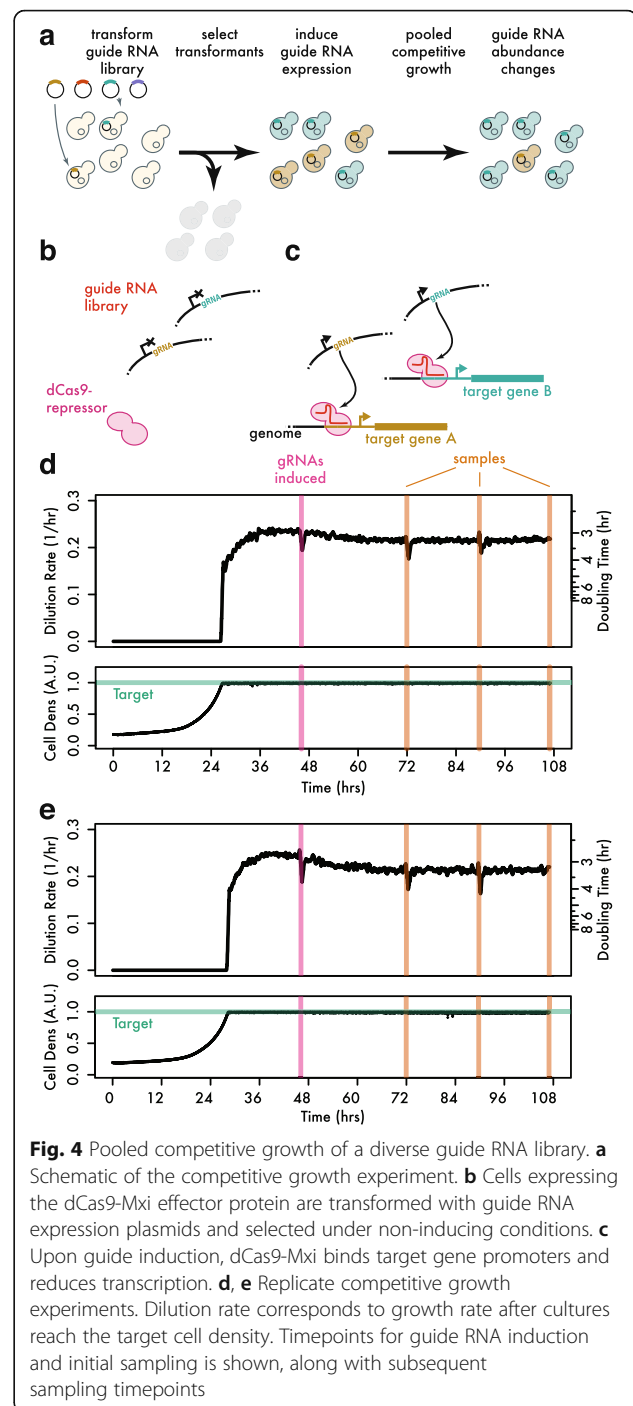
distinct guides, with a median of 3 barcodes per guide and ~35,000 guides linked to more than one barcode (Fig. 3d and Additional file 3: Table S2). We also recovered 344 distinct barcodes (~1% of the total) lacking a guide RNA entirely and thus expressing only the truncated single guide RNA scaffold. We presume that these “empty” guide RNA expression constructs will have little phenotypic effect and treat these barcodes as internal negative controls.

### CRISPRi growth phenotypes recapitulate known loss-of-function phenotypes genome-wide

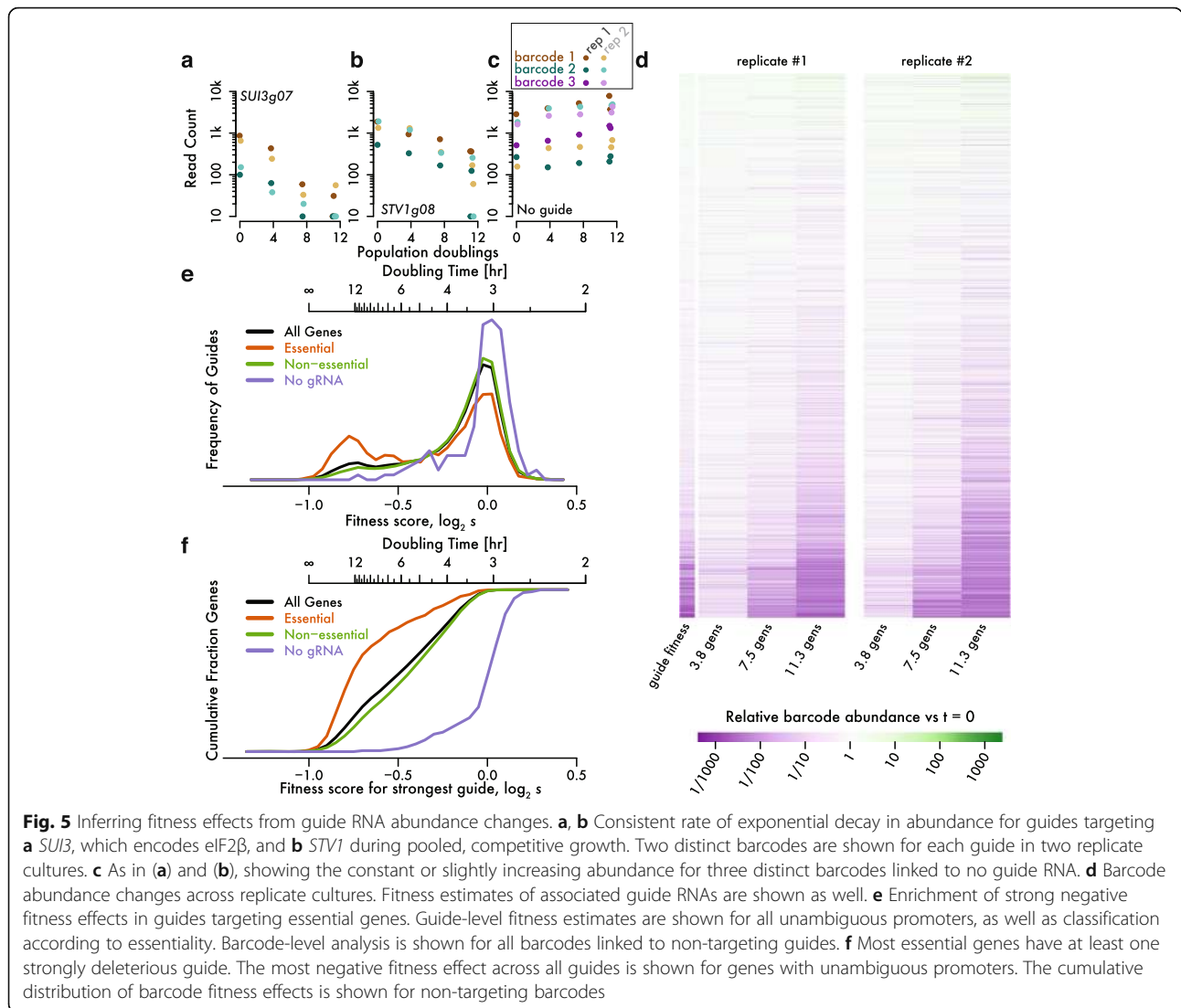
We wished to assess the growth phenotypes of our CRISPRi guides in a pooled yeast population. Plasmids containing guides that slow cell growth will decrease in abundance because they replicate along with the host cell, and we can measure the depletion of the associated barcodes by high-throughput sequencing. We wanted to ensure that even guides with strong negative phenotypes were present in our population at the start of the experiment, however. By using an inducible promoter to drive guide RNA expression [13, 14], we were able to establish a pooled population of cells that contain a diverse library of guide RNA plasmids, but do not express these guides (Fig. 4a, b). We then induced guide expression and followed the changes in the abundance of each guide, driven by its CRISPRi phenotype (Fig. 4a, c).

We also sought to maintain consistent culture conditions during the course of our competitive pooled growth experiment. After transforming our guide RNA expression library into yeast, we selected transformants — without guide induction — by growth in continuous liquid culture using a turbidostat bioreactor [33]. We then used this selected population to inoculate a second bioreactor culture in yeast minimal media. After the biological replicate cultures achieved a consistent growth rate in minimal media, we sampled the population and added tetracycline to induce guide RNA expression in these two replicate cultures (Fig. 4d, e). We then took three additional samples from each replicate over ~60 h of growth in the presence of tetracycline and prepared high-throughput sequencing libraries to quantify barcode abundance at each timepoint and in each replicate (Additional file 4: Table S3). We further prepared technical duplicate samples from each culture at the final timepoint in order to obtain an empirical estimate of the technical variability in our barcode abundance measurements.

Barcode abundances followed exponential dynamics during competitive growth, reflecting the fitness of the associated guide RNA. For example, the barcodes linked with one individual guide targeting *SUI3*, an essential gene encoding a translation initiation factor, declined consistently following guide induction and were almost



gone after 12 generations (Fig. 5a). The rate of decline was similar for two distinct barcodes linked to this guide in each of the two replicate cultures, demonstrating that barcode abundance changes provide a robust and quantitative measure of fitness. Likewise, two distinct barcodes for a guide targeting *STV1*, a non-essential gene, show a reproducible but more gradual decline in abundance (Fig. 5b). In contrast, three distinct barcodes with no guide showed constant or slightly increasing



abundance, starting from a wide range of initial values (Fig. 5c). The consistency of these individual trajectories, for distinct barcodes and in replicate cultures (Fig. 5d), suggested that we could model these barcode sequencing data and infer quantitative growth rates.

We took this approach to determine the fitness effect of 35,223 guide RNAs. We analyzed 123,506 barcodes showing adequate abundance (at least 64 reads) at the pre-induction timepoint. Barcode count data from four timepoints was fit with a negative binomial regression in a generalized linear model including a parameter that estimated the rate of change in barcode frequency across time. This change corresponds to the change in abundance of cells expressing the linked guide during pooled competitive growth, and thus to the fitness effect caused by guide expression. We verified the robustness of these measurements using two kinds of internal replication in our

experimental design. We compared fitness estimates between different barcodes associated with the same guide RNA and found a strong correlation between these barcodes ( $r = 0.79$ ), which represent independent lineages expressing the same guide. Furthermore, higher correlations could be obtained by filtering more stringently on pre-induction read counts, suggesting that statistical sampling during high-throughput sequencing contributes to apparent differences between barcodes linked to the same guide. We then produced guide-level fitness estimates by averaging barcode-level estimates using inverse-variance weighting (Additional file 5: Table S4). When we analyzed our biological replicate cultures individually, we found a strong ( $r = 0.69$ ) correlation between the fitness estimates in the two replicates. This correlation was substantially stronger ( $r = 0.83$ ) when restricted to guides with more than one barcode



measured in each replicate, highlighting the value of barcoding in producing reliable fitness measurements.

A substantial subset of guides showed a strong negative fitness, while we saw no strong positive effects, consistent with our expectation that gene knock-down is much more likely to slow growth than to accelerate it (Fig. 5e). As we knew the number of generations between each sample, we could calibrate these measurements and obtain an actual selective coefficient  $s$  reflecting the change in abundance over one doubling of the overall population. We use the fitness score  $\log_2 s$ , where a fitness score of 0 corresponds to doubling at the same rate as the population overall, and a cell that ceases growth entirely has  $s = 0.5$  and a fitness score of  $-1$ . We saw many fitness scores around  $-0.8$  or below, but essentially none below  $-1$ . The minimum fitness we observe does not reflect any inherent limitation of our model, which could capture the dynamics of a guide whose abundance declined faster than 2-fold each generation. We interpret this lower bound as an indication that our fitness estimates are quantitatively accurate. Our experiment measures directly the abundance of guide expression plasmids, which are likely to persist in genetically eliminated cells that could never again divide, and even in the cell wall “ghosts” remaining when yeast lose plasma membrane integrity. Such a persistent, non-replicating plasmid will decline in relative abundance by half each generation, yielding a fitness of  $-1$ .

We expected that strongly negative fitness effects would arise most often in guide RNAs that block expression of essential genes. To avoid ambiguity in determining the gene targeted by a guide RNA, we excluded divergent promoters where CRISPRi could in theory affect either or both genes (Fig. 1d) and restricted our analysis to 3521 unambiguous genes. Among this group, guides targeting one of 644 essential genes showed a clear bimodal fitness distribution with a distinct peak at very low fitness (Fig. 5e). In contrast, non-essential genes showed a modest depletion at very low fitness. Even in carefully designed guide RNA libraries, the majority of guides are ineffective, and so it is expected that many guides targeting essential genes nonetheless show little or no growth defect. Importantly, however, our library contained at least one guide with a strong fitness effect for almost every essential gene (Fig. 5f). It does not seem that CRISPRi efficacy should be higher on essential genes than on any others, and so this result argues that our library contained effective guides against most genes.

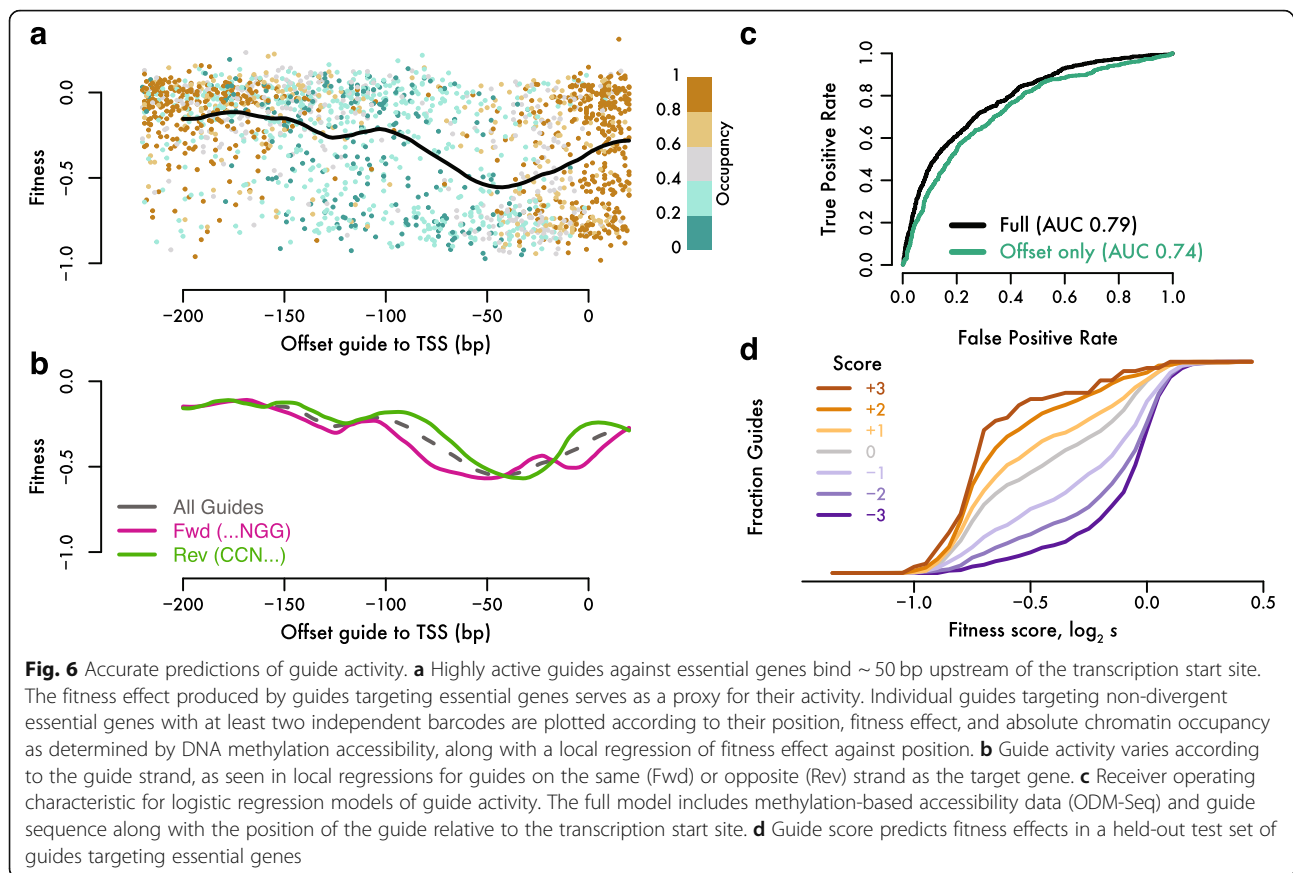
We also saw guides that provoked a serious fitness defect ( $\log_2 s < -0.5$ ) by targeting non-essential genes. Gene ontology analysis of the fitness estimates for non-essential gene knock-down provided two explanations for this phenomenon (Additional file 6: Tables S5

through S7). This analysis revealed a strong enrichment for ribosomal proteins (“translation” (GO:0006412) Mann-Whitney  $q < 3 \times 10^{-7}$ ). Many yeast ribosomal proteins are encoded by paralogous duplicate genes, and so they are not individually essential but show significant growth phenotypes when deleted [34]. We also observed enrichment for amino acid and nucleotide biosynthetic pathways (“purine nucleotide biosynthetic process” (GO:0006164), “leucine metabolic process” (GO:0006551), and “histidine biosynthetic process” (GO:0000105) all Mann-Whitney  $q < 0.05$ ). These metabolic processes should be required for growth in our experimental conditions — prototrophic yeast grown on minimal synthetic media lacking these nutrients. In contrast, the canonical list of essential genes was defined by viability of yeast on rich media, where these pathways are not required. Our ability to detect the conditional essentiality of histidine, leucine, threonine, and purine biosynthesis thus illustrates the value of our library for genetic screening.

#### Logistic regression provides well-calibrated predictions of guide RNA activity

Our guide RNA library includes effective guides against most essential genes, along with many ineffective guides for these same targets. This compendium offered the opportunity to better understand what features predicted guide efficacy. Focusing on the 644 essential genes with unambiguous promoters, we analyzed 1967 guides that targeted one of these genes and had at least two distinct, high-abundance barcodes in our data set.

The position of the guide relative to the transcription start site greatly impacted the efficacy of CRISPRi (Fig. 6a), consistent with previous observations [14]. All of our guides fell within a 240 nucleotide window around the transcription start site, and we ensured that guides were distributed across this region at each promoter. As seen in other analyses of budding yeast CRISPRi, strong fitness effects were most likely for guides binding roughly 50 bases upstream of the transcription start site, and fell off substantially on either side [15]. Furthermore, we saw differences between guides matching the coding versus the template strand (Fig. 6b). On either strand, guides showed the strongest average fitness effect when the invariant protospacer-adjacent motif (PAM) recognized directly by the Cas9 protein fell 50 bases upstream of the transcription start site. Notably, the Mxi1 repressor domain is fused to the C-terminus of dCas9 [10], which interacts with the PAM in the target-bound complex [35]. It seems that the distance between the repressor domain and the transcription start site is the key predictor of efficacy, rather than the region of DNA occupied by the dCas9 protein.



We used the strong positional bias of CRISPRi efficiency to resolve the likely target genes for guides at divergent promoters. Transcriptional start sites are typically separated by over 200 nucleotides, and so very few guides fall into the high-efficacy region for both genes. At a few closely-spaced promoters, it may prove impossible to inhibit just one gene potently and specifically by CRISPRi. In most cases, however, we can determine the target gene for each guide, increasing the number of specific guides for each gene in our library (Fig. 1c).

Accessibility of target site DNA correlates with guide activity in yeast and mammalian CRISPRi. Chromatin accessibility is partly confounded with position effects, as active yeast promoters show well-defined organization, with a nucleosome-free region around the transcription start site bounded by a positioned +1 nucleosome [36]. To investigate this effect in our library, we took accessibility measurements from a recent study that probed for DNA sensitive to *in vitro* methylation (ODM-Seq), which is blocked by nucleosome occupancy [37]. While the correlation between accessibility and position is apparent, it does not seem to explain the pattern of guide activity. Open chromatin typically extends over 100 bp upstream of the transcription start site, whereas guide activity falls off at shorter distances (Fig. 6a). Thus, it appears that

position and accessibility contribute separately to guide activity, leading us to seek a statistical model that could predict effective CRISPRi.

We developed a logistic regression model for active guides based on the target site position, sequence, and accessibility. We accounted for the complex relationship between position and activity empirically, using the local regression of quantitative fitness effect against the distance to the transcription start site (Fig. 6a) as one parameter in a larger regression model. Position alone predicted activity well (AUC 0.74; Fig. 6c), and performance improved substantially when methylation-based ODM-Seq accessibility and nucleotide sequence features were added (AUC 0.79; Fig. 6c). Both accessibility and sequence features individually improved model performance in *k*-fold cross-validation (Additional file 7: Fig. S3). Incorporating strand-specific position effects (Fig. 6b) decreased residual variance significantly, but did not improve model performance in cross-validation (Additional file 7: Fig. S3), and so we retained the strand-independent model. We also tested the relative contributions of ODM-Seq and ATAC-Seq accessibility data. While ATAC-Seq alone did contribute to model performance, we found that ODM-Seq yielded significant further improvement, whereas adding ATAC-Seq data did not improve on a

model that already incorporated ODM-Seq data, and so we used ODM-Seq accessibility alone.

Our model produced well-calibrated predictions of guide activity when assessed on a separate set of 3480 guides. These guides were held out of model development and validation, either because they targeted essential genes at divergent promoters, or because they were linked with only one high-abundance barcode. Most high-scoring guides produced fitness effects, whereas few low-scoring guides impaired growth, demonstrating that our regression model generalized well to these other guides (Fig. 6d). Furthermore, among guides with a logit-transformed score of 0, corresponding to equal odds of activity or inactivity, we observed a median fitness close to our threshold value for active guides. This quantitative agreement between model predictions and measured activity on a distinct test set not used for model development indicates that our score directly indicates the likelihood that a guide is active.

## Discussion

We provide a strategy for genome-wide CRISPR interference screening in budding yeast. We overcome the unpredictable activity of guide RNAs by designing up to ten distinct guides per gene, producing a library that contains at least one active guide against most genes, as assessed by our ability to induce growth defects on essential targets (Fig. 5e). Our library is similar in size and design to other, contemporaneous budding yeast CRISPRi guide libraries [38, 39], and we expect that these similar designs achieve comparable coverage. In our work, we also show that random nucleotide barcodes with linear IVT-RT amplification provide significant advantages for robust and quantitative CRISPR screening. Random nucleotide barcodes enable multiple, independent measurements of guide RNAs within a single experiment (Fig. 5a, b) and distinguish sequencing errors from defective guides (Fig. 3c). Linear amplification by in vitro transcription improves the quantitative reproducibility of barcode abundance measurements in sequencing data and reduces the occurrence of extreme outliers (Fig. 2). Barcoding and linear amplification are complementary and separable features — barcodes can be amplified by PCR, of course, and an embedded T7 RNA polymerase promoter can be used to transcribe guides themselves in vitro.

Systematic genetics in budding yeast benefits from a wealth of techniques for analyzing defined loss-of-function phenotypes. Most notably, barcoded deletion strains are available for most non-essential genes [2], along with mating and selection schemes for high-throughput crosses [40, 41]. Many essential genes are addressed by resources such as partial loss-of-function “DAmP” alleles [42] and titratable promoter alleles [43].

Inducible CRISPRi offers a valuable addition to this arsenal. It treats essential and non-essential genes on an equal footing by providing consistent partial-loss-of-function effects resulting from reduced transcription. It also limits the accumulation of suppressor mutations and other genetic aberrations that arise during long-term propagation of strains with heritable genetic lesions. Our library of inducible guides, and other similar efforts [39], now bring comprehensive and inducible CRISPRi screening to yeast.

## Conclusions

Genome-wide CRISPRi also provides practical features that are advantageous for many comprehensive genetic analyses. It is straightforward to carry out screens in nearly any genetic background, as guides are introduced in a single, pooled transformation of episomal plasmids. Indeed, the ease of carrying out a screen using this CRISPRi library approaches that of standard forward genetic screens. Deep sequencing of guide-linked barcodes (or guides themselves) then reveals a quantitative profile of phenotypes across the genome. We anticipate many uses for this screening system [44], as well as future refinements of guide RNA design based on data presented here.

## Methods

### Plasmids

Plasmids were constructed by standard molecular biology techniques as described below and verified by Sanger sequencing (Additional File 8: Table S8). Restriction enzymes were obtained from NEB and high-fidelity (HF) variants were used when available. Q5 polymerase (NEB M0491S) was used for PCR, assembly reactions were carried out using Gibson Assembly Master Mix (NEB E2611L).

pNTI647 was generated by amplifying the adjacent dCas9-Mxi and TetR expression cassettes from pNTI601 (pRS416-dCas9-Mxi1 + TetR + pRPR1(TetO)-NotI-gRNA, Addgene #73796) [14] using primers NM721 and NM734 (Additional file 8: Table S8). This insert was assembled into pCfB2225 (AddGene #67553), an “EasyClone 2.0” vector for KanMX-marked integration into the XII-2 safe harbor location [45].

pNTI661 was generated in several steps from pNTI601. The *URA3* marker was replaced by the *K. lactis LEU2* marker from pUG73 [46] by amplifying this marker using primers NI-993 and NI-994 (Additional file 8: Table S8), as well as amplifying a backbone fragment of pNTI601 using primers NI-995 and NI-996 (Additional file 8: Table S8), and assembling these back into pNTI601 digested with SpeI and KpnI. Primers KS524 and KS525 (Additional file 8: Table S8) were used to amplify the region of the vector excluding dCas9-

MxiI and TetR, which was recircularized by Gibson assembly. The barcode site was introduced by amplifying the guide RNA expression cassette with NI-1019 and NI-1020 and re-ligating the resulting product back into the vector after a SacI/SpeI digestion of both vector and PCR amplicon. Finally, the NotI site for guide RNA cloning was replaced with a BamHI-HindIII cassette by digesting the vector with NotI and performing Gibson assembly with the NI-1030 oligonucleotide.

pNTI698 was generated by amplifying the *HIS3*, *MET17*, and *URA3* genes from pHLUMv2 (AddGene #64166) [47] using p698Fwd and p698Rev primers (Additional file 8: Table S8). This insert was assembled into pCfB2223 (AddGene #67544), an “EasyClone 2.0” vector for KanMX-marked integration into the X-3 safe harbor location [45], digested with EcoNI. Note that the KanMX marker is disrupted by the *HIS3-MET17-URA3* cassette and the plasmid no longer confers resistance.

## Yeast

### Strains

Yeast were derived from *S. cerevisiae* strain BY4741 (ThermoFisher), a haploid MATa his3Δ1 leu2Δ0 LYS2 met15Δ ura3Δ0 derivative of S288c.

NIY416 was derived from BY4741 by transformation with integrating plasmid pNTI647 digested with NotI, followed by selection for kanamycin resistance.

NIY425 was derived from NIY416 by transformation with integrating plasmid pNTI698 digested with NotI, followed by selection for Ura and Met prototrophy.

### Media

Minimal media was prepared using 67. g / l yeast nitrogen base with ammonium sulfate and without amino acids (BD 291920) and 200. g / l dextrose (Fisher D16–500). Synthetic complete drop-out media minus leucine (SCD<sup>-</sup>Leu) was prepared using 67. g / l yeast nitrogen base with ammonium sulfate and without amino acids, 1.62 g / l synthetic drop-out mix minus leucine (US Bio D9626), and 200. g / l dextrose.

### High-efficiency transformations

High-efficiency yeast transformations were carried out by growing yeast cultures overnight at 30 °C with shaking and diluting these cultures to prepare fresh dilution cultures at an OD<sub>600</sub> of 0.05. Dilution cultures were grown at 30 °C with shaking until they reached an OD<sub>600</sub> of 0.5 and then 20 ml of culture was taken for each transformation. Cells were pelleted by centrifugation at 3000×g for 10 min and the supernatant was decanted. Cells were resuspended in 10. ml sterile deionized water and pelleted again by centrifugation at 3000×g for 5 min, the supernatant was decanted, and any residual liquid was removed with a pipettor. Cells were then

resuspended in 1.0 ml lithium acetate 100 mM, transferred to a microcentrifuge tube, and pelleted by centrifugation at 10,000×g for 10 s. Supernatant was removed by aspiration and cells were resuspended in 1.0 ml lithium acetate 100 mM and pelleted again at 10,000×g for 10 s. Supernatant was removed by aspiration, and 240 μl of 50% w/v polyethylene glycol was layered gently on top of cells, followed by 20. μl of freshly boiled salmon sperm DNA 10 mg / ml (Invitrogen 15,632,011), 36. μl lithium acetate 1.0 M, and 64. μl plasmid DNA. The microcentrifuge tubes were then vortexed vigorously to resuspend cells and incubated for 20 min in a 42 °C water bath, vortexing once during the incubation to maintain cells in suspension. Following this incubation, cells were pelleted by centrifugation at 10,000×g for 10 s and the transformation mixture was removed with a pipettor. Cells were resuspended in 1 ml sterile deionized water, pelleted by centrifugation at 10,000×g for 10 s, and the water was removed with a pipettor. Finally, cells were resuspended in 1.0 ml sterile deionized water per transformation.

### Guide library design

#### External data sets

Yeast genome sequence (R64–1-1, sacCer3) [48] and CDS annotations [21] were downloaded from the UCSC genome browser, and yeast gene information was downloaded directly from the Saccharomyces Genome Database [21]. Transcript isoform data was obtained from Pelechano et al. [23]. ATAC-seq data was obtained from from Schep et al. [22], GEO accession GSE66386.

#### Gene annotations

All major transcript isoforms (mTIFs) from Pelechano et al. [23] annotated to cover one intact ORF were considered for gene annotation. Considering the set of mTIFs for a gene, the modal (highest read count) transcription start site (TSS) was chosen as the representative transcription start site for the gene. When no transcript was annotated for the ORF, the annotated CDS was used for guide design and target prediction.

#### Guide scoring

All possible guides were identified by searching for GG dinucleotides, representing the Cas9 protospacer adjacent motif (PAM) in the yeast genome sequence. Guide site uniqueness was assessed by aligning each target sequence (20 base protospacer followed by “NGG” PAM) against the yeast genome reference using Bowtie2 [49]. Target sequences with multiple perfect genomic alignments were considered non-unique. Guides were associated with gene TSSes when the center of the target sequence fell between – 220 and + 20 nucleotides relative to the TSS. Guides were associated with CDS genes

when the center of the sequence fell between -350 and 0 nucleotides relative to the CDS. Guides were considered specific when these targeting rules associated the guide with only one single target gene. Target accessibility was determined by averaging ATAC-Seq accessibility, ranging from 0.0 for inaccessible to 1.0 for fully accessible, across all nucleotide positions in the target sequence in two replicate ATAC-Seq data sets. When no data was available, a value of 0.0 was used.

#### **Guide selection**

Guides were prioritized by first preferring unique guides, and then specific guides, and finally by greater ATAC-Seq accessibility. For each TSS-annotated gene, the highest-scoring guides were chosen for three zones spanning [-220, -141], [-140, -61], and [-60, +20] nucleotides relative to the TSS. For each CDS-annotated gene, the highest-scoring guides were chosen for four zones spanning [-350, -271], [-270, -191], [-190, -111], and [-110, -30] nucleotides relative to the start of the CDS. Additional guides were chosen, highest score first, until ten guides were chosen or all possible guides in the targeting region were exhausted.

#### **Barcoded guide expression library**

##### **Guide library construction**

The guide RNA expression vector pNTI661 was digested by taking 3.0 µg plasmid in a 75 µl reaction with 1x final concentration CutSmart buffer (NEB B7204S) with 60 U BamHI-HF (NEB R3136L) and 60 U HindIII-HF (NEB R3104S), incubated for 1 h at 37 °C, and then purified with a DNA Clean & Concentrator (Zymo D4013). The guide RNA oligonucleotide library was amplified using Q5 polymerase (NEB M0491S) according to the manufacturers instructions, using 100 pg guide oligonucleotide pool (CustomArray, Inc.) as a template and oligonucleotides NM636 and NM637 (Additional file 8: Table S8) for amplification, with 15 cycles of amplification using 10 s denaturation, 15 s annealing at 58 °C, and 15 s extension. Amplified guide RNAs were cloned in a 100 µl assembly reaction with 1.0 µg linearized pNTI661 and 1.7 µl guide RNA PCR using 2 × NEBuilder HiFi DNA Assembly Master Mix (NEB E2621L), which was incubated for 1 h at 50 °C and then purified with a DNA Clean & Concentrator with final elution into 10 µl. Purified DNA was used to transform high efficiency competent 10-beta *E. coli* (NEB C3019H), using 2.5 µl purified DNA per reaction in four independent transformations of 50 µl competent cells. Following transformation, transformations were pooled into 100 ml LB Carb liquid media and grown with vigorous shaking until reaching an OD<sub>600</sub> of 3. Plasmid DNA was extracted with a QIAGEN Plasmid Midi Kit (QIAGEN 12143).

##### **Barcode addition**

The guide expression library was digested again with BamHI-HF along with exonucleases in order to digest and degrade the majority of the guide-free plasmids. A 50 µl digestion reaction was prepared using 2 µg plasmid DNA in 1x final concentration CutSmart buffer with 20 U BamHI-HF, 5 U lambda exonuclease (NEB M0262S), and 20 U *E. coli* exonuclease I (NEB 0293S). Digestion was carried out for 1 h at 37 °C, followed by heat inactivation for 20 min at 80 °C. DNA was then purified using a Zymo DNA Clean & Concentrator column, with elution into 20 µl. The library was then linearized for barcode assembly in a 50 µl digestion reaction using 18 µl of eluted DNA from the previous digestion in 1x final concentration CutSmart buffer with 20 U SphI-HF (NEB R3182S). Digestion was carried out for 1 h at 37 °C, and DNA was purified again using a Zymo DNA Clean & Concentrator column.

Random nucleotide barcodes with embedded T7 RNA polymerase promoters were generated by PCR amplification from 1.0 µl NI-1026 oligonucleotide using NI-1027 and NI-1041 oligonucleotide primers (Additional file 8: Table S8). A 50 µl PCR using Q5 polymerase (NEB M0491S) according to the manufacturers instructions, with 15 cycles of amplification using 5 s denaturation, 10 s annealing at 65 °C, and 5 s extension. Product was purified using a DNA Clean & Concentrator column. Amplified barcodes were introduced in a 100 µl NEBuilder HiFi Assembly reaction containing 1 µg linearized guide library and 110 ng purified barcode PCR. DNA was purified using a DNA Clean & Concentrator column with final elution into 10 µl. Purified DNA was used to transform high efficiency competent 10-beta *E. coli*, using 2.5 µl purified DNA per reaction in four independent transformations of 50 µl competent cells. Following transformation, transformations were pooled into a single, 4.0 ml pool. Dilutions were plated on LB Carb agar plates to assess transformation efficiency, and 55% of the transformation was used to inoculate a 50 ml LB Carb culture while 22, 8, 6, and 4% were used to inoculate four separate 25 ml LB Carb cultures. Higher-inoculum 55 and 22% cultures were grown at 26 °C overnight, while lower-inoculum 8, 6, and 4% cultures were grown at 30 °C overnight. Based on the estimated yield of ~1.1 M transformants, the 22% culture was selected. DNA was isolated using a QIAGEN Plasmid Mini kit to produce the barcoded guide expression library.

##### **Comparative barcode amplification**

##### **Guide library transformation and yeast growth**

BY4741 was transformed with barcoded guide expression library in one high-efficiency transformation of ~100 M cells using 64 µl of plasmid DNA at 100 ng / µl.

Dilutions were plated on SCD -Leu agar plates in order to estimate the transformation efficiency, indicating a yield of ~330,000 independent transformants. The rest of the transformation was used to inoculate 100 ml of SCD -Leu media and grown for ~24 h at 30 °C with shaking, at which point the OD<sub>600</sub> increased roughly 4-fold, to 0.82. A new 100 ml SCD -Leu culture was inoculated with 400 µl of this culture and growth at 30 °C with shaking was continued overnight to yield a final OD<sub>600</sub> of 1.7. Four aliquots of 25 ml each were taken for yeast plasmid DNA extractions. Yeast were pelleted by centrifugation for 10 min at 3100×g, and media was discarded. Cells were resuspended in 1.0 ml sterile deionized water, pelleted 10,000×g for 30 s, and water was removed by aspiration. Washed yeast pellets were stored at -80 °C.

#### **Linear amplification by in vitro transcription**

Half of one plasmid extraction was used to prepare a 25 µl digestion in 1x final concentration CutSmart buffer with 20 U XhoI (NEB R0146L) and incubated 1 h at 37 °C. DNA was purified using a DNA Clean & Concentrator column with elution into 20. µl, and 18 µl of purified DNA was used as template in a 30 µl HiScribe T7 Quick High Yield RNA Synthesis reaction (NEB E2050S) following the protocol for short templates and incubated overnight at 37 °C. Template was degraded by adding 20 µl water followed by 4 U DNase I and continuing incubation for 15 min at 37 °C and RNA was then purified using an RNA Clean & Concentrator, with final elution into 15. µl. Purified RNA was assessed using a High Sensitivity RNA ScreenTape with an Agilent TapeStation 2200. Reverse transcription was carried out using 10 ng of purified RNA in a reaction with ProtoScript II (NEB M0368S) using 2.0 pmol NI-1032 as a gene-specific primer (Additional file 8: Table S8). Primer and template were denatured 5 min at 65 °C, kept on ice to prepare reactions, and then incubated 1 h at 42 °C followed by heat inactivation at 65 °C for 20 min. A 50 µl PCR reaction using Q5 was prepared using 5.0 µl RT product as a template without further purification, along with NEB-Next Multiplex Oligos for Illumina (NEB E7600S) as primers, and amplified for 7 cycles using 5 s denaturation, 10 s annealing at 65 °C, and 10 s extension. PCR products were purified using AMPure XP beads according to the manufacturer's instructions, using a 2 beads: 1 PCR ratio and final elution in 20. µl Tris•Cl 10 mM, pH 8.0. Products were validated using a High Sensitivity D1000 ScreenTape on an Agilent TapeStation 2200, pooled, and analyzed by 50 base single-read deep sequencing on an Illumina HiSeq with 10% phiX control. Note that the first 25 bases comprise high-diversity barcode libraries whereas the subsequent bases are monotemplate.

#### **Exponential PCR amplification**

First-round PCR was performed using Q5 polymerase, 10% of extracted yeast plasmid DNA as a template, and primers NI-956 and NI-1032 (Additional file 8: Table S8), and amplified for 16 cycles using 10 s denaturation, 15 s annealing at 65 °C, and 10 s extension. PCR products were purified using AMPure XP beads according to the manufacturer's instructions, using a 2 beads: 1 PCR ratio and final elution in 20. µl Tris•Cl 10 mM, pH 8.0. Second-round PCR was performed exactly as described for linear amplification by in vitro transcription, except that 1.0 µl of purified first-round PCR product was used as a template. PCR libraries were validated, pooled, and sequenced in parallel with linear amplification libraries.

#### **Barcode analysis**

Barcode sequencing data was analyzed by trimming the 3' adapter sequence "GCATGCGTGAAGTGGCGGCCT-GATA" using Cutadapt, discarding all sequences that either lacked a linker or contained a barcode sequence less than 10 nucleotides long. Barcodes were tabulated using a custom tool, "bc-count", that collapses single-nucleotide mismatches. Barcode counts were collated across all four libraries and filtered to remove barcodes that occurred in only one library or had fewer than 33 reads total across all 4 libraries. Barcodes were also filtered to remove sequences containing XhoI sites. Barcode counts were plotted, and DESeq2 was used to estimate read count-dispersion relationships from barcode count tables.

#### **Barcoded-to-guide assignment**

##### **Sequencing library construction**

First-round PCR was carried out in 50 µl using Q5 polymerase with 100 ng barcoded guide library as template and primers NI-1038 and NI-956 (Additional file 8: Table S8), and 12 cycles of amplification were performed using 10 s denaturation, 15 s annealing at 67 °C, and 20 s extension. PCR products were purified using AMPure XP beads at an 0.8 beads: 1 PCR ratio and final elution in 15. µl Tris•Cl 10 mM, pH 8.0. Second-round PCR was performed with 1.0 µl of first-round PCR as template and primers NI-798 and NI-826 (Additional file 8: Table S8), and 15 cycles of amplification were performed using 10 s denaturation, 15 s annealing at 65 °C, and 20 s extension. PCR products were again purified using AMPure XP beads and validated using a High Sensitivity D1000 ScreenTape on an Agilent TapeStation 2200 prior to 150 base paired-end sequencing on an Illumina MiSeq. PhiX control DNA was mixed to account for monotemplate regions of the library. Barcode sequencing data is available under accession SRR10356224.

### Sequencing data analysis

Barcodes in R1 reads were trimmed to remove the 3' adapter sequence "GCATGCGTGAAGTGGCGCGCCT-GATAGCTCGTTTAAACTG" and read pairs lacking this adapter in the R1 read, or reads with residual barcodes less than 12 nucleotides long, were discarded. Trimmed barcodes were collapsed to combine barcodes with single-nucleotide mismatches using the custom "bc-seqs" program, and guide sequences in R2 were then trimmed to remove the 5' adapter "CGAAAC" and the 3' adapter "AAGTTAAAT", leaving 20 bases of constant sequence on each side of the variable 20 nucleotide guide sequence. Read pairs where less than 20 nucleotides of residual guide sequence remained were discarded. Remaining guide sequences were aligned against a library of guide sequences using bowtie2. These alignments were used to compute barcode assignments using the custom "bc-grna" program. This tool grouped all guide alignments associated with the same barcode sequence, discarded sequences with low-quality ( $Q < 30$ ) bases, and then eliminated all barcodes that lacked at least 3 high-quality guide reads. Barcodes are assigned to guides when they are supported by at least 3 high-quality reads, at least 90% of these reads align to the same guide sequence and the majority alignment to that guide has no mismatches, insertions, or deletions. Barcodes where  $< 90\%$  of all reads aligned to a single majority guide were considered heterogeneous and discarded. Barcodes where the majority alignment contained mismatches, insertions, or deletions were considered defective guides. The number of barcodes in each of these categories is tabulated in the "grna-assign-barcode-fates.txt" file and the high-quality barcode-to-guide assignments are given in the "grna-assign-barcode-grna-good.txt" file.

### Competitive growth

#### Guide library transformation

Guide RNA library was transformed into NIY425 as described in "High-efficiency transformations." Three independent transformations were pooled and used to inoculate a turbidostat [33] containing ~200 ml SCD -Leu media at an initial  $OD_{600}$  of 0.1. The culture was maintained for ~24 h at a target  $OD_{600}$  of 0.5, at 30 °C with continuous aeration and stirring. A 40 ml culture was combined with 40 ml fresh, pre-warmed SCD -Leu media and grown in batch culture at 30 °C with shaking for 4.5 h, reaching an  $OD_{600}$  of 2.0. Cells were pelleted by centrifugation for 10 min at 3100×g, room temperature and media was discarded. Cells were resuspended in 8.0 ml sterile deionized water and split into 8 aliquots of 1.0 ml. Cells were pelleted 10,000×g for 30 s and water was removed by aspiration. Cells were resuspended in 0.80 ml sterile 30% glycerol in deionized

water, flash frozen in liquid nitrogen, and stored at -80 °C.

### Competitive growth

Two independent turbidostats [33] each containing ~200 ml minimal media were inoculated with aliquots of the guide library transformant pool, yielding an initial  $OD_{600}$  of 0.1. Turbidostats were grown at 30 °C with continuous aeration and stirring, with a target  $OD_{600}$  of 0.5. After ~46 h, a 50 ml sample was withdrawn from each turbidostat and processed as described for "Guide library transformation and yeast growth" in "Comparative barcode amplification." Turbidostat media was then replaced with minimal media containing 250 µg / l anhydrotetracycline and growth was continued, with additional 50 ml samples taken at ~72 h, ~90 h, and ~107 h.

### Barcode abundance library construction

Plasmid DNA was extracted from frozen yeast pellets. Barcodes were amplified and sequenced as described above for "Linear amplification by in vitro transcription" in "Comparative barcode amplification," except that 1–10 ng of in vitro transcription product was used as a reverse transcription template, and 12 cycles of PCR amplification were carried out in the final step of library generation.

### Sequencing data analysis

Barcode abundance was tabulated as described above for "Comparative barcode amplification" and barcodes were matched to guides using the results of "Barcode-to-guide assignment."

### Fitness effect analyses

Barcodes were filtered to eliminate entries that did not have at least 64 reads tabulated for the pre-induction sample in at least one replicate culture. These filtered barcode counts were then analyzed using DESeq2 with the model  $counts \sim gens + culture$ , where *gens* was a numerical factor that was 0.0 for pre-induction samples and then 3.75, 7.5, and 11.25 for the three post-induction timepoints, and *culture* was a discrete factor for the two replicate cultures. The *gens* parameter from this linear model was taken as an estimate of the selective coefficient per population doubling for each barcode. Guide-level analysis was performed by taking the weighted mean of the estimate for each individual barcode, using the standard error estimate to compute  $1/Var$  weights for each barcode. Fitness effect distributions were calculated by first filtering for genes with unambiguous guide targeting, where TSS data was available and no guide RNA had an alternate target gene identified by our approach. A list of essential genes was

downloaded from the *Saccharomyces* genome deletion project [1, 2].

### Guide efficacy analysis

Efficacy models were fitted using 1967 guides against essential genes with unambiguous targeting and fitness effects derived from more than one barcode. The offset between the guide target and the transcription start site was calculated based on the center of the 23 nucleotide target sequence. The relationship between fitness effect and guide-to-TSS offset was modeled with a local regression ( $\alpha = 0.25$ ) across the  $-220$  to  $+20$  range used for guide selection. Accessibility data was derived from Oberbeckmann et al. ODM-Seq data [37], using the lowest occupancy value in a 33 nucleotide window including the full target sequence and 5 flanking nucleotides on each side. The fitness threshold for active guides,  $s < -0.38$  was defined according to the 5th percentile of all negative controls. Logistic regression against activity classification was performed using the model  $active \sim OffsetPred + ODM + nt01 + \dots + nt20$ , where *OffsetPred* was the predicted value from the local regression of guide position, *ODM* was the ODM-Seq accessibility data, and *nt01* through *nt20* were 20 discrete factors representing the variable guide sequence. Alternative models excluded the *ODM* variable or the 20 sequence factors, included ATAC-Seq data from Schep et al. [22] used in guide design, or used two distinct, strand-specific local regressions for *OffsetPred*. Models (local regression and logistic regression together) were tested by *k*-fold cross-validation with  $k = 10$ , and the final model was generated using all guides. This final model was used to score 3480 guides (1491 active, i.e.,  $\log_2 s < -0.38$ ) against essential genes that had been held out of the model development because they targeted divergent promoters or had just one barcode quantified.

### Abbreviations

ATAC-Seq: assay for transposase-accessible chromatin using sequencing; CRIS PR: clustered regularly interspaced short palindromic repeats; CRISPRi: CRISPR interference; DAmP: decreased abundance by mRNA [erturbation]; DNA: deoxyribonucleic acid; gRNA: guide RNA; IVT: in vitro transcription; ODM-seq: occupancy measurement via DNA methylation and high-throughput sequencing; PAM: protospacer-adjacent motif; PCR: polymerase chain reaction; RNA: ribonucleic acid; RT: reverse transcription

### Supplementary Information

The online version contains supplementary material available at <https://doi.org/10.1186/s12864-021-07518-0>.

**Additional file 1: Table S1.** Sequences, genomic coordinates, and gene targets for designed guide RNAs.

**Additional file 2: Figures S1 and S2.** Detailed strategy for library construction and sequencing.

**Additional file 3: Table S2** Guide RNAs associated with random nucleotide barcodes.

**Additional file 4: Table S3.** Barcode abundance measurements from deep sequencing.

**Additional file 5: Table S4.** Guide RNA fitness estimates derived from four timepoints of growth in two biological replicate cultures.

**Additional file 6: Tables S5 through S7.** Gene ontology enrichment analysis of guide RNA fitness effects.

**Additional file 7: Figure S3.** Receiver operating characteristic for logistic regression models of guide activity.

**Additional file 8: Table S8.** Table of custom oligonucleotide sequences used in this study.

### Acknowledgements

pRS416-dCas9-Mxi1 + TetR + pRPRI(TetO)-NotI-gRNA was a gift from Ronald Davis. pCFB2223 and pCFB2225 were gifts from Irina Borodina. pH LUM (version 2) was a gift from Markus Ralsler.

### Authors' contributions

NJM and NTI conceived and designed the study. NJM, ZAM, and KKR constructed and validated the CRISPRi plasmids. NJM, ZAM, and RM tested barcode amplification strategies. ZAM carried out the growth screen with assistance from RB. NTI analyzed sequencing data. All authors read and approved the final manuscript.

### Funding

This work was supported by grants DP2CA195768 and R01GM130996 from the National Institutes of Health (N.I.H.). The funding agency played no role in the design of the study, the collection, analysis or interpretation of the data, or in writing the manuscript.

### Availability of data and materials

The datasets and computer code produced in this study are available in the following databases:

- High-throughput sequencing data are available from the NCBI SRA under BioProject PRJNA579997 at <https://www.ncbi.nlm.nih.gov/bioproject/PRJNA579997>
  - Scripts to analyze these data and generate figures for this manuscript, along with key data tables including the guide RNA library, the barcode-to-guide assignment table, and the guide-level fitness data, are available on GitHub at <https://github.com/ingolia-lab/yeast-crispri>.
  - Plasmids and barcoded guide RNA libraries are available from AddGene.
- The following existing data sets were used in this analysis:
- Genomic sequence was downloaded from <http://hgdownload.cse.ucsc.edu/goldenPath/sacCer3/bigZips/chromFa.tar.gz>.
  - Gene models were downloaded from <http://hgdownload.cse.ucsc.edu/goldenPath/sacCer3/database/sgdGene.txt.gz>.
  - Gene annotation information was downloaded from [https://downloads.yeastgenome.org/curation/chromosomal\\_feature/SGD\\_features.tab](https://downloads.yeastgenome.org/curation/chromosomal_feature/SGD_features.tab).
  - Experimentally derived transcript isoform data were downloaded from <http://steinmetzlab.embl.de/TIFSeq/data/Supplemental/Supplementary%20Data%202.zip>.
  - Yeast essential gene lists were downloaded from [http://www.sequence.stanford.edu/group/yeast\\_deletion\\_project/Essential\\_ORFs.txt](http://www.sequence.stanford.edu/group/yeast_deletion_project/Essential_ORFs.txt).
  - ATAC-Seq data were obtained from the NCBI GEO database accession GSE66386.
  - ODE-Seq data were obtained from NCBI GEO accession GSE141051.

### Declarations

#### Ethics approval and consent to participate

Not applicable.

#### Consent for publication

Not applicable.

#### Competing interests

The authors declare that they have no competing interests.



**Author details**<sup>1</sup>Department of Molecular and Cell Biology, Berkeley, CA 94720, USA.<sup>2</sup>Biophysics Graduate Group, University of California, Berkeley, CA 94720, USA.<sup>3</sup>California Institute for Quantitative Biosciences, University of California, Berkeley, Berkeley, CA 94720, USA.

Received: 9 August 2020 Accepted: 8 March 2021

Published online: 23 March 2021

**References**

- Winzler EA, Shoemaker DD, Astromoff A, Liang H, Anderson K, Andre B, Bangham R, Benito R, Boeke JD, Bussey H, et al. Functional characterization of the *S. cerevisiae* genome by gene deletion and parallel analysis. *Science*. 1999;285(5429):901–6.
- Giaever G, Chu AM, Ni L, Connelly C, Riles L, Veronneau S, Dow S, Lucau-Danila A, Anderson K, Andre B, et al. Functional profiling of the *Saccharomyces cerevisiae* genome. *Nature*. 2002;418(6896):387–91.
- Fraser AG, Kamath RS, Zipperlen P, Martinez-Campos M, Sohrmann M, Ahringer J. Functional genomic analysis of *C. elegans* chromosome I by systematic RNA interference. *Nature*. 2000;408(6810):325–30.
- Gonczy P, Echeverri C, Oegema K, Coulson A, Jones SJ, Copley RR, Duperon J, Oegema J, Brehm M, Cassin E, et al. Functional genomic analysis of cell division in *C. elegans* using RNAi of genes on chromosome III. *Nature*. 2000;408(6810):331–6.
- Paddison PJ, Silva JM, Conklin DS, Schlabach M, Li M, Aruleba S, Balija V, O'Shaughnessy A, Gnoj L, Scobie K, et al. A resource for large-scale RNA-interference-based screens in mammals. *Nature*. 2004;428(6981):427–31.
- Jiang F, Doudna JA. CRISPR-Cas9 structures and mechanisms. *Annu Rev Biophys*. 2017;46:505–29.
- Jasin M, Haber JE. The democratization of gene editing: insights from site-specific cleavage and double-strand break repair. *DNA Repair (Amst)*. 2016;44:6–16.
- Morgens DW, Deans RM, Li A, Bassik MC. Systematic comparison of CRISPR/Cas9 and RNAi screens for essential genes. *Nat Biotechnol*. 2016;34(6):634–6.
- Dominguez AA, Lim WA, Qi LS. Beyond editing: repurposing CRISPR-Cas9 for precision genome regulation and interrogation. *Nat Rev Mol Cell Biol*. 2016;17(1):5–15.
- Gilbert LA, Larson MH, Morsut L, Liu Z, Brar GA, Torres SE, Stern-Ginossar N, Brandman O, Whitehead EH, Doudna JA, et al. CRISPR-mediated modular RNA-guided regulation of transcription in eukaryotes. *Cell*. 2013;154(2):442–51.
- Gilbert LA, Horlbeck MA, Adamson B, Villalta JE, Chen Y, Whitehead EH, Guimaraes C, Panning B, Ploegh HL, Bassik MC, et al. Genome-scale CRISPR-mediated control of gene repression and activation. *Cell*. 2014;159(3):647–61.
- Kampmann M. CRISPRi and CRISPRa screens in mammalian cells for precision biology and medicine. *ACS Chem Biol*. 2018;13(2):406–16.
- Farzadfar F, Perli SD, Lu TK. Tunable and multifunctional eukaryotic transcription factors based on CRISPR/Cas. *ACS Synth Biol*. 2013;2(10):604–13.
- Smith JD, Suresh S, Schlecht U, Wu M, Wagih O, Peltz G, Davis RW, Steinmetz LM, Parts L, St Onge RP. Quantitative CRISPR interference screens in yeast identify chemical-genetic interactions and new rules for guide RNA design. *Genome Biol*. 2016;17:45.
- Smith JD, Schlecht U, Xu W, Suresh S, Horecka J, Proctor MJ, Aiyar RS, Bennett RA, Chu A, Li YF, et al. A method for high-throughput production of sequence-verified DNA libraries and strain collections. *Mol Syst Biol*. 2017;13(2):913.
- Ferreira R, Skrekas C, Hedin A, Sanchez BJ, Siewers V, Nielsen J, David F. Model-assisted fine-tuning of central carbon metabolism in yeast through dCas9-based regulation. *ACS Synth Biol*. 2019;8(11):2457–63.
- Jaffe M, Dziulko A, Smith JD, St Onge RP, Levy SF, Sherlock G. Improved discovery of genetic interactions using CRISPRiSeq across multiple environments. *Genome Res*. 2019;29(4):668–81.
- Bowman EK, Deaner M, Cheng JF, Evans R, Oberortner E, Yoshikuni Y, Alper HS. Bidirectional titration of yeast gene expression using a pooled CRISPR guide RNA approach. *Proc Natl Acad Sci U S A*. 2020;117(31):18424–30.
- Jensen ED, Ferreira R, Jakociunas T, Arsovska D, Zhang J, Ding L, Smith JD, David F, Nielsen J, Jensen MK, et al. Transcriptional reprogramming in yeast using dCas9 and combinatorial gRNA strategies. *Microb Cell Factories*. 2017;16(1):46.
- Jensen MK. Design principles for nuclease-deficient CRISPR-based transcriptional regulators. *FEMS Yeast Res*. 2018;18(4):foy039.
- Cherry JM, Hong EL, Amundsen C, Balakrishnan R, Binkley G, Chan ET, Christie KR, Costanzo MC, Dwight SS, Engel SR, et al. *Saccharomyces cerevisiae* genome database: the genomics resource of budding yeast. *Nucleic Acids Res*. 2012;40(Database issue):D700–5.
- Schep AN, Buenrostro JD, Denny SK, Schwartz K, Sherlock G, Greenleaf WJ. Structured nucleosome fingerprints enable high-resolution mapping of chromatin architecture within regulatory regions. *Genome Res*. 2015;25(11):1757–70.
- Pelechano V, Wei W, Steinmetz LM. Extensive transcriptional heterogeneity revealed by isoform profiling. *Nature*. 2013;497(7447):127–31.
- Michlits G, Hubmann M, Wu SH, Vainorius G, Budusan E, Zhuk S, Burkard TR, Novatchkova M, Aichinger M, Lu Y, et al. CRISPR-UMI: single-cell lineage tracing of pooled CRISPR-Cas9 screens. *Nat Methods*. 2017;14(12):1191–7.
- Schmierer B, Botla SK, Zhang J, Turunen M, Kivioja T, Taipale J. CRISPR/Cas9 screening using unique molecular identifiers. *Mol Syst Biol*. 2017;13(10):945.
- van Dijk EL, Auger H, Jaszczyszyn Y, Thermes C. Ten years of next-generation sequencing technology. *Trends Genet*. 2014;30(9):418–26.
- Van Gelder RN, von Zastrow ME, Yool A, Dement WC, Barchas JD, Eberwine JH. Amplified RNA synthesized from limited quantities of heterogeneous cDNA. *Proc Natl Acad Sci U S A*. 1990;87(5):1663–7.
- Eberwine J, Yeh H, Miyashiro K, Cao Y, Nair S, Finnell R, Zettel M, Coleman P. Analysis of gene expression in single live neurons. *Proc Natl Acad Sci U S A*. 1992;89(7):3010–4.
- Hashimshony T, Wagner F, Sher N, Yanai I. CEL-Seq: single-cell RNA-Seq by multiplexed linear amplification. *Cell Rep*. 2012;2(3):666–73.
- Chen C, Xing D, Tan L, Li H, Zhou G, Huang L, Xie XS. Single-cell whole-genome analyses by linear amplification via transposon insertion (LIANTI). *Science*. 2017;356(6334):189–94.
- Huang L, Ma F, Chapman A, Lu S, Xie XS. Single-cell whole-genome amplification and sequencing: methodology and applications. *Annu Rev Genomics Hum Genet*. 2015;16:79–102.
- Hegde M, Strand C, Hanna RE, Doench JG. Uncoupling of sgRNAs from their associated barcodes during PCR amplification of combinatorial CRISPR screens. *PLoS One*. 2018;13(5):e0197547.
- McGeachy AM, Meacham ZA, Ingolia NT. An accessible continuous-culture Turbidostat for pooled analysis of complex libraries. *ACS Synth Biol*. 2019;8(4):844–56.
- Cheng Z, Mugler CF, Keskin A, Hodapp S, Chan LY, Weis K, Mertins P, Reggev A, Jovanovic M, Brar GA. Small and large ribosomal subunit deficiencies lead to distinct gene expression signatures that reflect cellular growth rate. *Mol Cell*. 2019;73(1):36–47 e10.
- Anders C, Niewoehner O, Duerst A, Jinek M. Structural basis of PAM-dependent target DNA recognition by the Cas9 endonuclease. *Nature*. 2014;513(7519):569–73.
- Yuan GC, Liu YJ, Dion MF, Slack MD, Wu LF, Altschuler SJ, Rando OJ. Genome-scale identification of nucleosome positions in *S. cerevisiae*. *Science*. 2005;309(5734):626–30.
- Oberbeckmann E, Wolff M, Krietenstein N, Heron M, Ellins JL, Schmid A, Krebs S, Blum H, Gerland U, Korber P. Absolute nucleosome occupancy map for the *Saccharomyces cerevisiae* genome. *Genome Res*. 2019;29(12):1996–2009.
- Lian J, Schultz C, Cao M, Hamedirad M, Zhao H. Multi-functional genome-wide CRISPR system for high throughput genotype-phenotype mapping. *Nat Commun*. 2019;10(1):5794.
- Momen-Roknabadi A, Oikonomou P, Zegans M, Tavazoie S. An inducible CRISPR interference library for genetic interrogation of *Saccharomyces cerevisiae* biology. *Commun Biol*. 2020;3(1):723.
- Tong AH, Evangelista M, Parsons AB, Xu H, Bader GD, Page N, Robinson M, Raghibizadeh S, Hogue CW, Bussey H, et al. Systematic genetic analysis with ordered arrays of yeast deletion mutants. *Science*. 2001;294(5550):2364–8.
- Pan X, Yuan DS, Xiang D, Wang X, Sookhai-Mahadeo S, Bader JS, Hieter P, Spencer F, Boeke JD. A robust toolkit for functional profiling of the yeast genome. *Mol Cell*. 2004;16(3):487–96.
- Schuldiner M, Collins SR, Thompson NJ, Denic V, Bhamidipati A, Punna T, Ihmels J, Andrews B, Boone C, Greenblatt JF, et al. Exploration of the function and organization of the yeast early secretory pathway through an epistatic miniarray profile. *Cell*. 2005;123(3):507–19.
- Mnaimneh S, Davierwala AP, Haynes J, Moffat J, Peng WT, Zhang W, Yang X, Pootoolal J, Chua G, Lopez A, et al. Exploration of essential gene functions via titratable promoter alleles. *Cell*. 2004;118(1):31–44.

44. Muller R, Meacham ZA, Ferguson L, Ingolia NT. CiBER-seq dissects genetic networks by quantitative CRISPRi profiling of expression phenotypes. *Sci*. 2020;370(6522):eabb9662.
45. Stovicek V, Borja GM, Forster J, Borodina I. EasyClone 2.0: expanded toolkit of integrative vectors for stable gene expression in industrial *Saccharomyces cerevisiae* strains. *J Ind Microbiol Biotechnol*. 2015;42(11):1519–31.
46. Gueldener U, Heinisch J, Koehler GJ, Voss D, Hegemann JH. A second set of loxP marker cassettes for Cre-mediated multiple gene knockouts in budding yeast. *Nucleic Acids Res*. 2002;30(6):e23.
47. Mulleder M, Campbell K, Matsarskaia O, Eckerstorfer F, Ralsler M. *Saccharomyces cerevisiae* single-copy plasmids for auxotrophy compensation, multiple marker selection, and for designing metabolically cooperating communities. *F1000Res*. 2016;5:2351.
48. Engel SR, Dietrich FS, Fisk DG, Binkley G, Balakrishnan R, Costanzo MC, Dwight SS, Hitz BC, Karra K, Nash RS, et al. The reference genome sequence of *Saccharomyces cerevisiae*: then and now. *G3 (Bethesda)*. 2014;4(3):389–98.
49. Langmead B, Salzberg SL. Fast gapped-read alignment with bowtie 2. *Nat Methods*. 2012;9(4):357–9.

### Publisher's Note

Springer Nature remains neutral with regard to jurisdictional claims in published maps and institutional affiliations.

**Ready to submit your research? Choose BMC and benefit from:**

- fast, convenient online submission
- thorough peer review by experienced researchers in your field
- rapid publication on acceptance
- support for research data, including large and complex data types
- gold Open Access which fosters wider collaboration and increased citations
- maximum visibility for your research: over 100M website views per year

**At BMC, research is always in progress.**

Learn more [biomedcentral.com/submissions](https://biomedcentral.com/submissions)

