

A Habitable Fluvio-Lacustrine Environment at Yellowknife Bay, Gale Crater, Mars

J. P. Grotzinger,^{1*} D. Y. Sumner,² L. C. Kah,³ K. Stack,¹ S. Gupta,⁴ L. Edgar,⁵ D. Rubin,^{6†} K. Lewis,⁷ J. Schieber,⁸ N. Mangold,⁹ R. Milliken,¹⁰ P. G. Conrad,¹¹ D. DesMarais,¹² J. Farmer,¹³ K. Siebach,¹ F. Calef III,¹³ J. Hurowitz,¹⁴ S. M. McLennan,¹⁴ D. Ming,¹⁵ D. Vaniman,¹⁶ J. Crisp,¹³ A. Vasavada,¹³ K. S. Edgett,¹⁷ M. Malin,¹⁷ D. Blake,¹² R. Gellert,¹⁸ P. Mahaffy,¹¹ R. C. Wiens,¹⁹ S. Maurice,²⁰ J. A. Grant,²¹ S. Wilson,²¹ R. C. Anderson,¹³ L. Beegle,¹³ R. Arvidson,²² B. Hallet,²³ R. S. Sletten,²³ M. Rice,¹ J. Bell III,⁵ J. Griffes,¹ B. Ehlmann,^{1,13} R. B. Anderson,²⁴ T. F. Bristow,¹² W. E. Dietrich,²⁵ G. Dromart,²⁶ J. Eigenbrode,¹¹ A. Fraeman,²² C. Hardgrove,¹⁷ K. Herkenhoff,²⁴ L. Jandura,¹³ G. Kocurek,²⁷ S. Lee,¹³ L. A. Leshin,²⁸ R. Leveille,²⁹ D. Limonadi,¹³ J. Maki,¹³ S. McCloskey,¹³ M. Meyer,³⁰ M. Minitti,⁵ H. Newsom,³¹ D. Oehler,¹⁵ A. Okon,¹³ M. Palucis,²⁵ T. Parker,¹³ S. Rowland,³² M. Schmidt,³³ S. Squyres,³⁴ A. Steele,³⁵ E. Stolper,¹ R. Summons,³⁶ A. Treiman,³⁷ R. Williams,¹⁶ A. Yingst,¹⁶ MSL Science Team‡

The Curiosity rover discovered fine-grained sedimentary rocks, which are inferred to represent an ancient lake and preserve evidence of an environment that would have been suited to support a martian biosphere founded on chemolithoautotrophy. This aqueous environment was characterized by neutral pH, low salinity, and variable redox states of both iron and sulfur species. Carbon, hydrogen, oxygen, sulfur, nitrogen, and phosphorus were measured directly as key biogenic elements; by inference, phosphorus is assumed to have been available. The environment probably had a minimum duration of hundreds to tens of thousands of years. These results highlight the biological viability of fluvial-lacustrine environments in the post-Noachian history of Mars.

The environmental history of early Mars is mostly written in stone. The first few billion years of Mars' geologic history document surface environments considerably different than the surface today, prompting a succession of coordinated surface and orbiter missions over the past two decades aimed at ultimately determining if Mars ever had an early biosphere. Water is the essential ingredient for all life as we understand it; therefore, past missions have sought environments in which water was abundant and possibly long-lived. However, to create an environment that could have been habitable by microorganisms, the presence of water alone is insufficient: A source of energy to fuel microbial metabolism is required, as are the elements carbon, hydrogen, sulfur, nitrogen, and phosphorous (and a host of others at trace levels). The Mars Science Laboratory (MSL) rover Curiosity was designed and built to search for these materials and, thus, potentially delineate one or more habitable environments at the Gale crater landing site. We show here that Gale crater once contained an ancient lake that would have been well suited to support a martian biosphere founded on chemolithoautotrophy.

Exploration for habitable environments is Curiosity's core mission objective. Achieving this goal necessitates a challenging set of science measurements on just the right rocks to extend beyond the search for aqueous environments. To enhance the probability of mission success, we adopted an exploration strategy that

included well-defined secondary objectives in addition to exploring Gale's central mountain, Aeolis Mons (informally known as Mt. Sharp), the mission's primary science target. The selection of the Gale crater field site, where Curiosity landed on 6 August 2012, 5:32 UTC, was based on the recognition that it retained records of multiple and diverse ancient aqueous environments and thus enhanced the potential that one or more of those settings might have provided the combination of factors necessary to sustain a habitable environment (1). Another important factor included mapping the landing ellipse ahead of landing so that no matter where the rover touched down, our first drive would take us in the direction of a science target deemed to have the greatest value, as weighed against longer-term objectives and the risk of mobility failure.

Mapping and Geologic Framework for Exploration

Gale crater is 154 km in diameter with a central mountain of stratified rock. Gale straddles the crustal dichotomy boundary, a topographic demarcation between heavily cratered uplands and sparsely cratered lowlands. In the vicinity of Gale, the dichotomy boundary is crossed by numerous incised valley networks suggestive of surface aqueous flows that discharged to the north across the lowlands (2). Gale's stratigraphy, mineralogy, and landforms have been well studied from orbit (3–6). A broader context for understanding Mt. Sharp has been devel-

oped (7), along with Gale's relevance to MSL's goals (1, 8). The primary mission objective is to examine the lower foothills of Mt. Sharp (Fig. 1A), located outside of the landing ellipse, where hematitic and hydrated clay- and sulfate-bearing strata were detected from orbit (5, 9) and are accessible by the rover (1).

The surface mission was planned in advance (1) to take into account the drive distance from anywhere in the landing ellipse up to and across the Mt. Sharp foothills, including time for sampling and analyses en route. The landing ellipse is located in the broad valley (Aeolis Palus) between the Gale crater rim and Mt. Sharp (Fig. 1A). Depending on where

¹Division of Geologic and Planetary Sciences, California Institute of Technology, Pasadena, CA 91125, USA. ²Department of Earth and Planetary Sciences, University of California, Davis, CA 95616, USA. ³Department of Earth and Planetary Sciences, University of Tennessee, Knoxville, TN 37996, USA. ⁴Department of Earth Science and Engineering, Imperial College London, London SW7 2AZ, UK. ⁵School of Earth and Space Exploration, Arizona State University, Tempe, AZ 85287, USA. ⁶U.S. Geological Survey, Santa Cruz, CA 95060, USA. ⁷Department of Geoscience, Princeton University, Princeton, NJ 08544, USA. ⁸Department of Geological Sciences, Indiana University, Bloomington, IN 47405, USA. ⁹Laboratoire Planétologie et Géodynamique de Nantes (LPGN), LPGN/CNRS UMR6112 and Université de Nantes, 44322 Nantes, France. ¹⁰Department of Geological Sciences, Brown University, Providence, RI 02912, USA. ¹¹NASA Goddard Space Flight Center, Greenbelt, MD 20771, USA. ¹²Department of Space Sciences, NASA Ames Research Center, Moffett Field, CA 94035, USA. ¹³Jet Propulsion Laboratory, California Institute of Technology, Pasadena, CA 91109, USA. ¹⁴Department of Geosciences, State University of New York State at Stony Brook, Stony Brook, NY 11794–2100, USA. ¹⁵Jacobs Technology, NASA Johnson Space Center, Houston, TX 77058, USA. ¹⁶Planetary Science Institute, Tucson, AZ 85719, USA. ¹⁷Malin Space Science Systems, San Diego, CA 92121, USA. ¹⁸Department of Physics, University of Guelph, Guelph, Ontario N1G 2W1, Canada. ¹⁹Space Remote Sensing, Los Alamos National Laboratory, Los Alamos, NM 87544, USA. ²⁰Institut de Recherche en Astrophysique et Planétologie (IRAP), Université de Toulouse/CNRS, 31400 Toulouse, France. ²¹Center for Earth and Planetary Studies, National Air and Space Museum, Smithsonian Institution, Washington, DC 20560, USA. ²²Department of Earth and Planetary Sciences, Washington University in St. Louis, St. Louis, MO 63130, USA. ²³Department of Earth and Space Sciences, University of Washington, Seattle, WA 98195, USA. ²⁴U.S. Geological Survey, Flagstaff, AZ 86001, USA. ²⁵Department of Earth and Planetary Science, University of California, Berkeley, CA 94720, USA. ²⁶Laboratoire de Géologie de Lyon, Université de Lyon, 69364 Lyon, France. ²⁷Department of Geological Sciences, University of Texas at Austin, Austin, TX 78712, USA. ²⁸School of Science, Rensselaer Polytechnic Institute, Troy, NY 12180, USA. ²⁹Canadian Space Agency, St-Hubert, Quebec J3Y 8Y9, Canada. ³⁰NASA Headquarters, Washington, DC 20546, USA. ³¹Institute of Meteoritics, University of New Mexico, Albuquerque, NM, 87131 USA. ³²Department of Geology and Geophysics, University of Hawaii at Manoa, Honolulu, HI 96822, USA. ³³Department of Earth Sciences, Brock University, St. Catharines, Ontario L2S 3A1, Canada. ³⁴Department of Astronomy, Cornell University, Ithaca, NY 14853, USA. ³⁵Geophysical Laboratory, Carnegie Institution for Science, Washington, DC 20015, USA. ³⁶Department of Earth and Planetary Science, Massachusetts Institute of Technology, Cambridge, MA 02139, USA. ³⁷Lunar and Planetary Institute, Houston, TX 77058, USA.

*Corresponding author. E-mail: grotz@gps.caltech.edu

†Present address: Department of Earth and Planetary Sciences, University of California, Santa Cruz, CA 95064, USA.

‡MSL Science Team authors and affiliations are listed in the supplementary materials.

Exploring Martian Habitability

Curiosity touched down, potential secondary science targets within the landing ellipse included the Peace Vallis alluvial (water-deposited) fan lobe; a high-thermal inertia terrain localized downslope from and adjacent to the fan; several fresh craters; and inverted stream channels. In the case of the current study, a secondary target near the landing site became a notable objective, with the decision (10) made after landing to drive in the opposite direction of the Mt. Sharp entry point to sample stratified rocks of relatively high

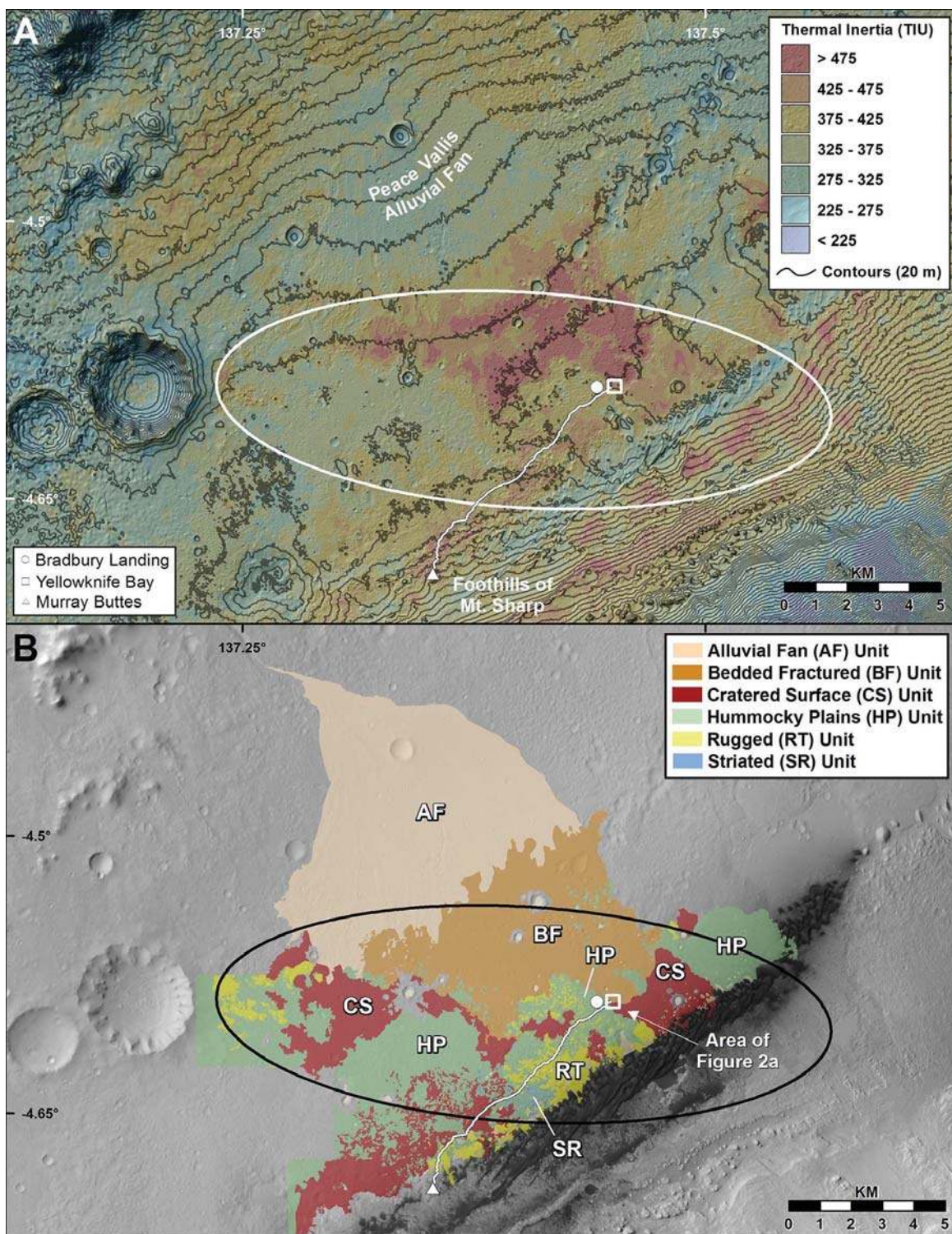
thermal inertia exposed at Yellowknife Bay (11) (Figs. 1A and 2A).

Geologic mapping (12), building on earlier efforts (4), proved critically important to selecting the postlanding drive direction and science targets. This work provided the broader context in which to understand the strata drilled by Curiosity in Yellowknife Bay. The MSL team-generated map (Fig. 1B) reveals six units (13) that are distinguished based on variations in thermal inertia; textural attributes such as the

presence of scarps and lineations consistent with bedding; surface roughness based on shadowing; apparent relative albedo; and patterns of albedo variation such as those indicating fractures, bedding, or mottling. These units include the Peace Vallis alluvial fan (AF); an immediately adjacent and downslope light-toned, bedded, fractured unit (BF); surfaces with relatively high crater densities (CS); tonally smooth but hummocky plains (HP); light-toned topographically variable or rugged terrain (RT); and light-toned

Fig. 1. Regional context maps. (A) Location of Bradbury landing site and Yellowknife Bay in relation to the topography and thermal inertia of the broad valley between Gale crater's rim and Mt. Sharp.

The white ellipse denotes the landing ellipse; the white line represents the intended drive route from Yellowknife Bay to the Mt. Sharp entry point at Murray Buttes. (B) A geological map was constructed based largely on HiRISE image data and was used to demarcate major terrain types for exploration by Curiosity. The MSL Science Team chose to drive the rover to Yellowknife Bay where three terrains intersect in a triple junction. One of these terrains (BF) very closely coincides with higher values of thermal inertia, and it was also recognized that rocks at Yellowknife Bay are downslope of those forming the AF unit, suggesting a genetic link. The black ellipse is the landing ellipse; the white line represents the intended drive route from Yellowknife Bay to the Mt. Sharp entry point. The legend for symbols in (A) also applies to those in (B).



striated rocks (SR). By sol 440 (where 1 sol is a martian day), the RT and SR units had not been examined by Curiosity and are not discussed further. Both are considered as exposures of bedrock based on textures and higher thermal inertia values. The CS unit was inspected only from a distance during the traverses to and from Yellowknife Bay and probably reflects lateral equivalents of bedrock studied by Curiosity, discussed further below.

The HP unit is exposed in the vicinity of Bradbury Landing (14) and has lower values of thermal inertia. It is composed dominantly of loose materials, including clasts interpreted to be impact ejecta, but also displays erosional remnants of underlying bedrock. Analyzed clasts have basaltic, alkalic (K- and Na-rich) compositions (15), and some clasts and soils contain crystals of probable feldspar (16). Windows through this material in the vicinity of Bradbury

Landing, including the excavation zones produced by Curiosity's descent rockets, expose pebble conglomerate bedrock of fluvial (stream-related) origin (17).

The AF and BF units are important because of their intimate spatial association and possible relation to rocks exposed at Yellowknife Bay. The AF unit is defined by the Peace Vallis fan, which extends from the northwest rim of Gale crater (Fig. 1B); it may be the youngest component of a much more extensive alluvial plain that flanks the crater wall (4). The Peace Vallis fan probably formed by routing of eroded crater rim-derived rock fragments and any materials that accumulated there after crater formation, through Peace Vallis followed by downstream spreading and deceleration of flows and deposition of sediments in the downslope direction. The upslope part of the AF unit is marked by smooth mottled surfaces punctuated by slope-

aligned linear ridges with a relief of 0.5 to 2.5 m interpreted as inverted stream channels. Downslope, this unit passes into the widespread BF unit that continues all the way to Yellowknife Bay, where it is coincident with the stratified bedrock exposed there and the terrain that marks the floor of the "bay" (18) itself. Although map relations suggest that the BF unit represents distal fan facies (rock types), these relations do not require that the Yellowknife Bay BF exposures be contemporaneous with the Peace Vallis lobe of the alluvial plain; they could represent an older component of the alluvial plain, separated from the youngest activity by an unconformity (see below). Nevertheless, the close spatial association implies a genetic link, with the BF unit having formed in a probably distal alluvial or even lacustrine (lake-related) setting, consistent with earlier mapping (4).

Geologic units in the interior of Gale crater display a range of relative ages and preserve a substantial record of geologic activity since the crater formed close to the Noachian–Early Hesperian boundary ~3.7 billion years ago (6). The oldest units are probably of Early Hesperian age and likely include the bulk of the alluvial plain that extends downslope of the crater rim. The Peace Vallis alluvial lobe (map unit AF) appears to represent the latest stage of transport and deposition on the alluvial plain.

Our mapping shows that strata exposed at Yellowknife Bay are probably fan, distal fan, or downslope equivalents such as lacustrine deposits. Despite the ambiguity in the relative age of these strata, the fluvial-lacustrine depositional context remains intact, and this is what motivated the MSL Science Team to explore these rocks.

Stratigraphy and Sedimentology of Yellowknife Bay Rocks

Bradbury Landing occurs near the crest of a broad topographic high, several kilometers in width, informally called Bradbury Rise. To the north and east, the rise descends to rocks of the BF unit. After landing, the team-consensus decision was to traverse eastward and downhill to the HP-BF contact, as close as possible to the triple junction where the CS unit also intersects (Fig. 1B). Between Bradbury Landing and Yellowknife Bay, Curiosity crossed a straight-line distance of 445 m and descended 18 m in elevation. Most of this distance was spent traversing the clast-strewn HP unit, with its occasional outcrops of pebble conglomerate facies. Beginning at the Bathurst Inlet outcrop, a succession of strata was encountered with good exposure down to the floor of Yellowknife Bay (Fig. 2A). In ascending order, these strata are informally named the Sheepbed (>1.5 m thick), Gillespie Lake (~2.0 m thick), and Glenelg members (~1.7 m thick); the assemblage of members is known as the Yellowknife Bay formation, and the exposed section is ~5.2 m thick. (Fig. 3 and table S1). Strata are largely decimeter-scale in thickness and comprise a heterogeneous assemblage

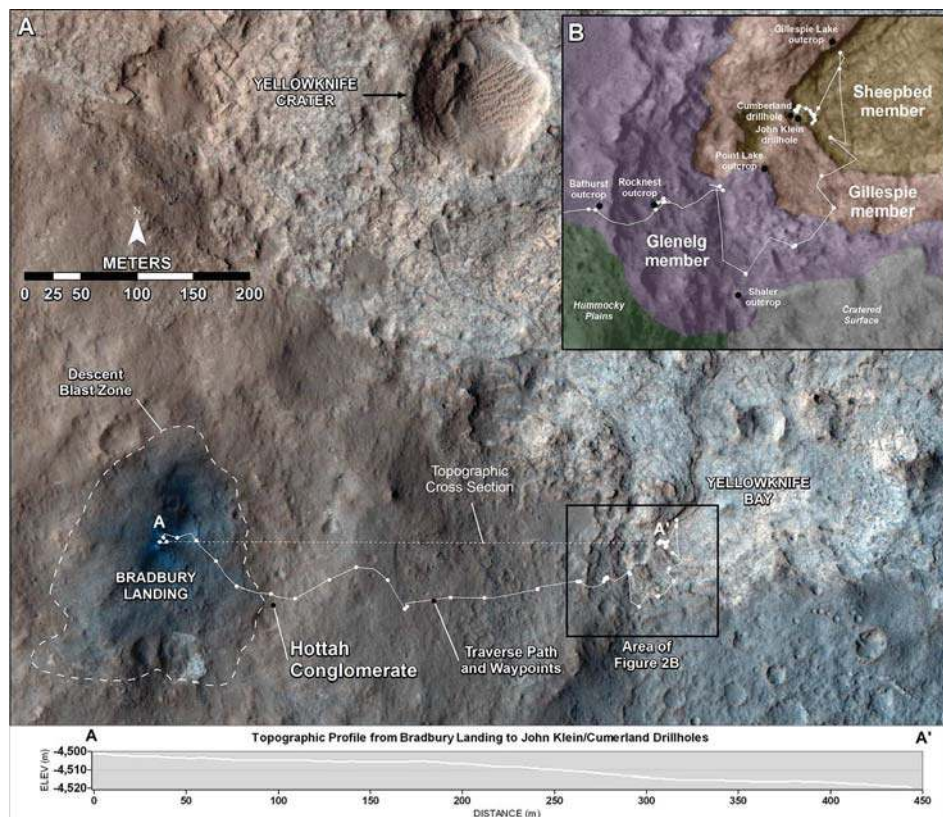


Fig. 2. Local context maps. (A) HiRISE image (PSP_010573_1755) of Bradbury Landing showing Curiosity's position after landing and the path of eventual traverse to Yellowknife Bay, where the John Klein and Cumberland holes were drilled. The area of this image is approximated by the circle and square symbols in Fig. 1B. Yellowknife Bay derives its name from Yellowknife crater, which is located within the broad expanse of the BF map unit. The BF unit probably represents the Yellowknife Bay formation at more regional scales. Cross section (A to A') shows topography from Bradbury Landing to Yellowknife Bay. (B) The inset shows a detailed geological map of the southwest part of Yellowknife Bay. Three maps units (HP, CS, BF) intersect just south of the Shaler outcrop. The BF map unit is subdivided into three members (see text). Key outcrops are shown that provided information leading to the development of a stratigraphy shown in Fig. 4. Note that the contact between Sheepbed member and Gillespie Lake member erodes to form a topographic step that is visible from orbit and can be traced for hundreds of meters around Yellowknife Bay. Therefore, it seems likely that much of the Yellowknife Bay topographic depression was created by eolian erosion of the Sheepbed mudstone member (see text). See Fig. 4 for mapped stratigraphic units. Locations of Rocknest (scoop location and rocky outcrops) and John Klein and Cumberland (drill) sampling locations are shown.

Exploring Martian Habitability

of mostly detrital sedimentary rocks of basaltic bulk composition. Breaks in outcrop continuity due to accumulated loose materials on the slope (Fig. 3) introduce a degree of uncertainty in understanding lateral extent of bedding; the lowest stratigraphic members (Sheepbed and Gillespie Lake) are best exposed around the perimeter of Yellowknife Bay (Fig. 2B). The Glenelg member contains a diverse suite of facies formed of beds with demonstrably less lateral continuity, although most beds can be traced for at least tens of meters.

The basal Sheepbed and Gillespie Lake members are characterized (19) by elemental compositions broadly consistent with a provenance that, on average, is similar to typical martian upper crust (20). In addition, these rocks carry the signal of higher thermal inertia as seen from orbit. Subtle geochemical variations within and between these units mostly reflect minor variations in provenance. A marked change in composition, best reflected by a sharp increase in K_2O contents and K_2O/Al_2O_3 ratios (Fig. 4), takes place higher in the section in the Glenelg member (Bathurst Inlet outcrop), suggesting a fundamental change in the provenance to one dominated by more alkaline igneous rocks (16, 21). This change could result from either propagation of the fluvial system headwaters into an area with more alkaline igneous rocks or a shift to more locally derived volcanic debris, such as reworked volcanic rocks or ash deposits (21). Major element compositions do not indicate substantial chemical weathering in the sediment source area, which implicates a frigid or arid climate, a high-relief source area undergoing rapid erosion, or a combination of these factors (19, 21).

In general, the Yellowknife Bay formation (Fig. 4) is composed of fine-, medium-, and coarse-grained sandstones of basaltic composition. The Shaler outcrop (~125 cm thick) consists of a heterogeneous assemblage of interstratified platy coarser-grained beds comprising sandstones and likely pebbly units, separated by recessive, probably finer-grained intervals. Coarser-grained intervals are characterized by distinct decimeter-scale trough cross-bedding (Fig. 5A). Recessive intervals are marked by downward-tapering cracks that terminate upward at bedding planes and are probably filled with sediment from the overlying bed. The rock termed "Rocknest-3" is very fine-grained, finely laminated sandstone or siltstone with shrinkage cracks (Fig. 5B). Volcanic or impact-related base-surge deposition is excluded by the abundance of decimeter-scale and compound cross-bedding, the absence of stoss-side cross-stratification with preservation only of bedform toesets, and variable cross-bed dip directions. Furthermore, there are hierarchical scales of cross-stratification at the Shaler outcrop, indicating migration of superimposed bedforms of different scales. These attributes are most consistent with a former fluvial environment characterized by bedload and suspended load transport and variable, but net southeast flow directions. However, some eolian bedload transport is suggested by intercalated beds with pinstripe lamination. Most paleocurrent data are restricted to 90° of variability (fig. S1); however, some scatter to almost 180°, which is consistent with migration of three-dimensional (3D) superimposed bedforms (22). The inferred sediment transport direction suggests derivation of sediments from the direction of the Gale crater rim.

A fluvial interpretation is further supported by the tapered, likely sediment-filled cracks that are most easily accounted for by desiccation-induced shrinkage of finer-grained interbeds. These interbeds could represent either fluvial overbank deposits, slack water deposits in the troughs between bedform crests, or intercalated tongues of proximal lacustrine facies.

The Point Lake outcrop (~50 cm thick) is noteworthy for its pervasive centimeter-scale voids (Fig. 5C). These voids could possibly point to a volcanic origin, specifically a vesicular lava flow (23). Alternatively, it is possible that this facies also represents a pebbly debris flow or gas-charged intrusive sedimentary sill (24, 25). Scattered blebs of light-toned material were evaluated as calcium sulfate by ChemCam (19) and appear to fill voids and narrow fractures. Thus, it is possible that the rock could be a sandstone with leached nodular evaporites (26).

The Sheepbed and stratigraphically overlying Gillespie Lake members (Figs. 3 and 4) make up the exposed base of the Yellowknife Bay formation, and their contact has eroded to form a decimeter-scale distinctive topographic step observable in High Resolution Imaging Science Experiment (HiRISE) orbiter image data (Fig. 2A). The Gillespie Lake member consists of amalgamated, sheetlike sandstones. Bedding generally has a massive appearance, though poorly defined cross-bedding is present. The basal bed of the Gillespie Lake member is formed of poorly sorted, angular to moderately well-rounded, medium to very coarse sand of bulk basaltic composition (Fig. 5D). Some of the largest grains have translucent luster. Very little residual porosity between grains is evident, which suggests

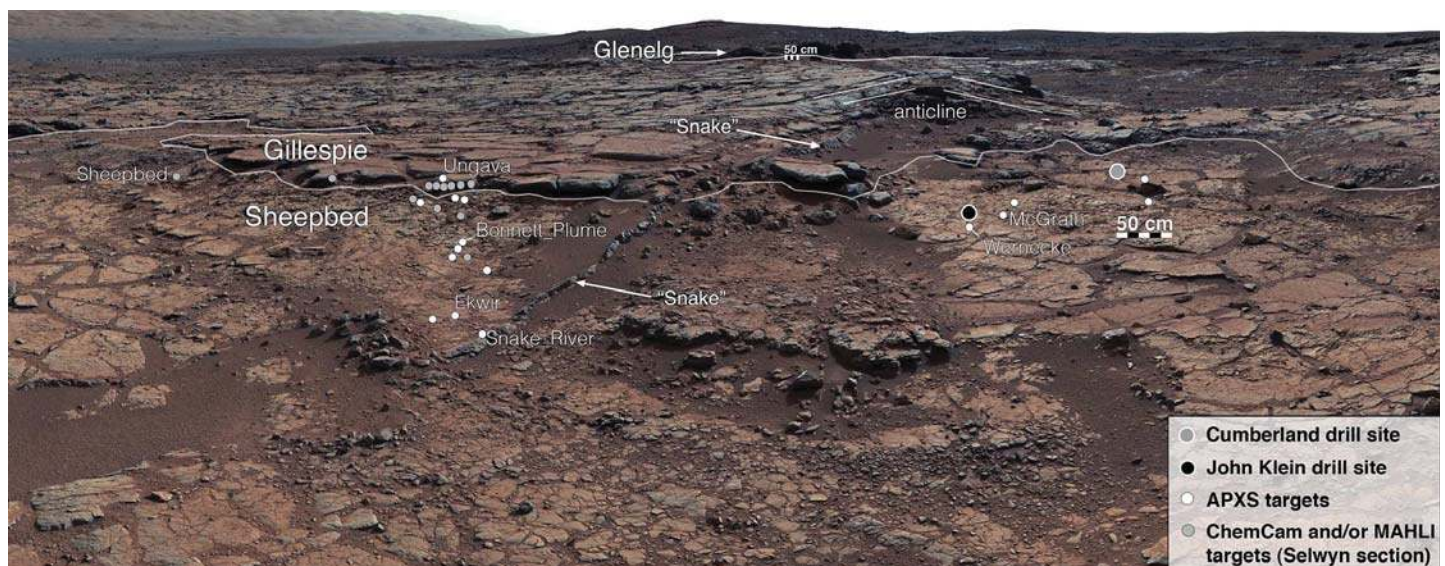


Fig. 3. Mastcam mosaic of Yellowknife Bay formation. View from the base of the exposed section up through Sheepbed, Gillespie Lake, and basal Glenelg members. Locations of drill holes and APXS measurements are shown. High density of APXS measurements between Snake River and Ungava targets delineates the route of the Selwyn reference section. Note the "snake" feature cutting up through the section and terminating in a small anticline. White dots represent combined APXS, MAHLI, and ChemCam measurements; gray dots

denote ChemCam or MAHLI only. Both scale bars are 50 cm long with 10-cm-spaced white and black sections. The lower scale bar is ~8 m away from Curiosity; the upper scale bar is ~30 m away. The 111-image mosaic was acquired on sol 137, by M-34 sequence 818. This figure shows only a small portion of the full mosaic. The foothills of Mt. Sharp are visible in the distance, upper left, southwest of camera position. For mosaic image identification numbers (IDs), see (31).

a high degree of cementation; what porosity does exist appears as sparse, millimeter-scale irregular vugs (void spaces). This basal bed has a sharp, erosional base that shows centimeter-scale scouring into the underlying Sheepbed member mudstones and appears to show lateral variation in its thickness. The poor sorting, massive bedding, and variability of grain shape in the Gillespie Lake sandstones are most consistent with fluvial transport and deposition. The sheetlike geometry of the beds, extending over hundreds of meters,

and the absence of well-developed channel bodies may indicate deposition as distal fan lobes, as documented in examples from ancient alluvial fans on Earth (27).

The pebble conglomerate outcrops distributed across the HP map unit have an uncertain stratigraphic relation with respect to the Yellowknife Bay formation. On one hand, the conglomerate exposures occur at a topographically high level above flat-lying rocks of the Yellowknife Bay formation; the simplest interpretation would in-

voke superposition and, therefore, a younger age for the conglomerate than the Yellowknife Bay formation. However, regional mapping allows for, but does not require, an alternative possibility in which flat-lying Yellowknife Bay rocks unconformably onlap older rocks that underlie the HP map unit; in this interpretation, the conglomerate is relatively older. Unfortunately, outcrop between Yellowknife Bay rocks and the nearest conglomerate is very poor, and it is not possible to observe a contact. Therefore, both

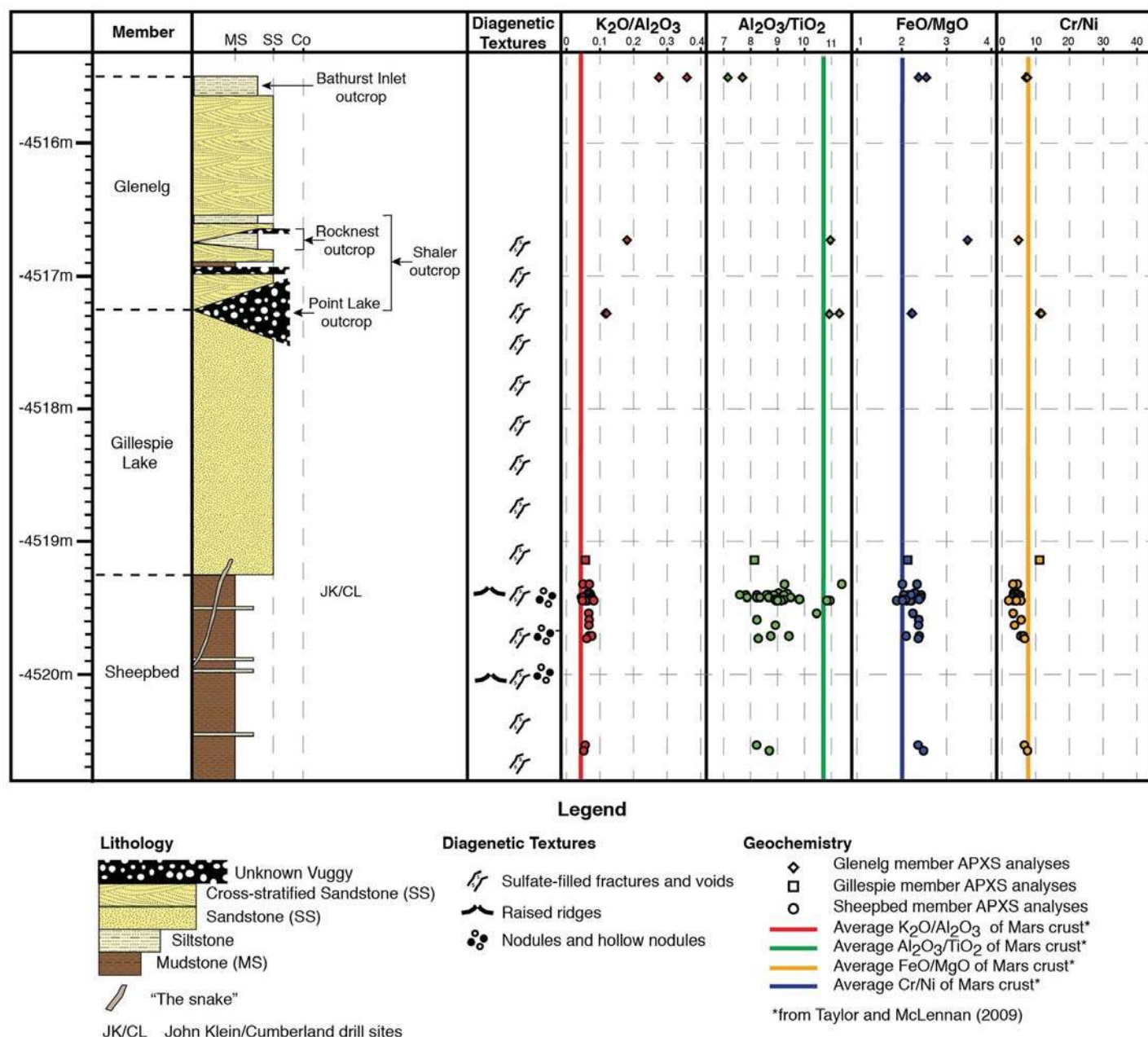


Fig. 4. Stratigraphy of the Yellowknife Bay formation plotted with elemental and oxide ratios measured by the Curiosity APXS instrument. The Yellowknife Bay section was split into three members distinguished by lithological properties (facies, textures), chemical composition, and attributes observed from orbit by HiRISE. The stratigraphic column highlights differences in grain size between the Yellowknife Bay members and the presence

of stratification styles; primary textures; and diagenetic textures including nodules, hollow nodules, raised ridges, sulfate-filled fractures, and vugs. APXS analyses are plotted as ratios to highlight compositional trends throughout the Yellowknife Bay formation. Average Mars crustal composition for each ratio (colored vertical lines) (20) is plotted for comparison to Curiosity APXS measurements.

Exploring Martian Habitability

options are feasible, but in either case, these rocks all belong to the same genetically related suite of fluvial-lacustrine sediments derived from the crater rim.

Sheepbed Mudstone Member

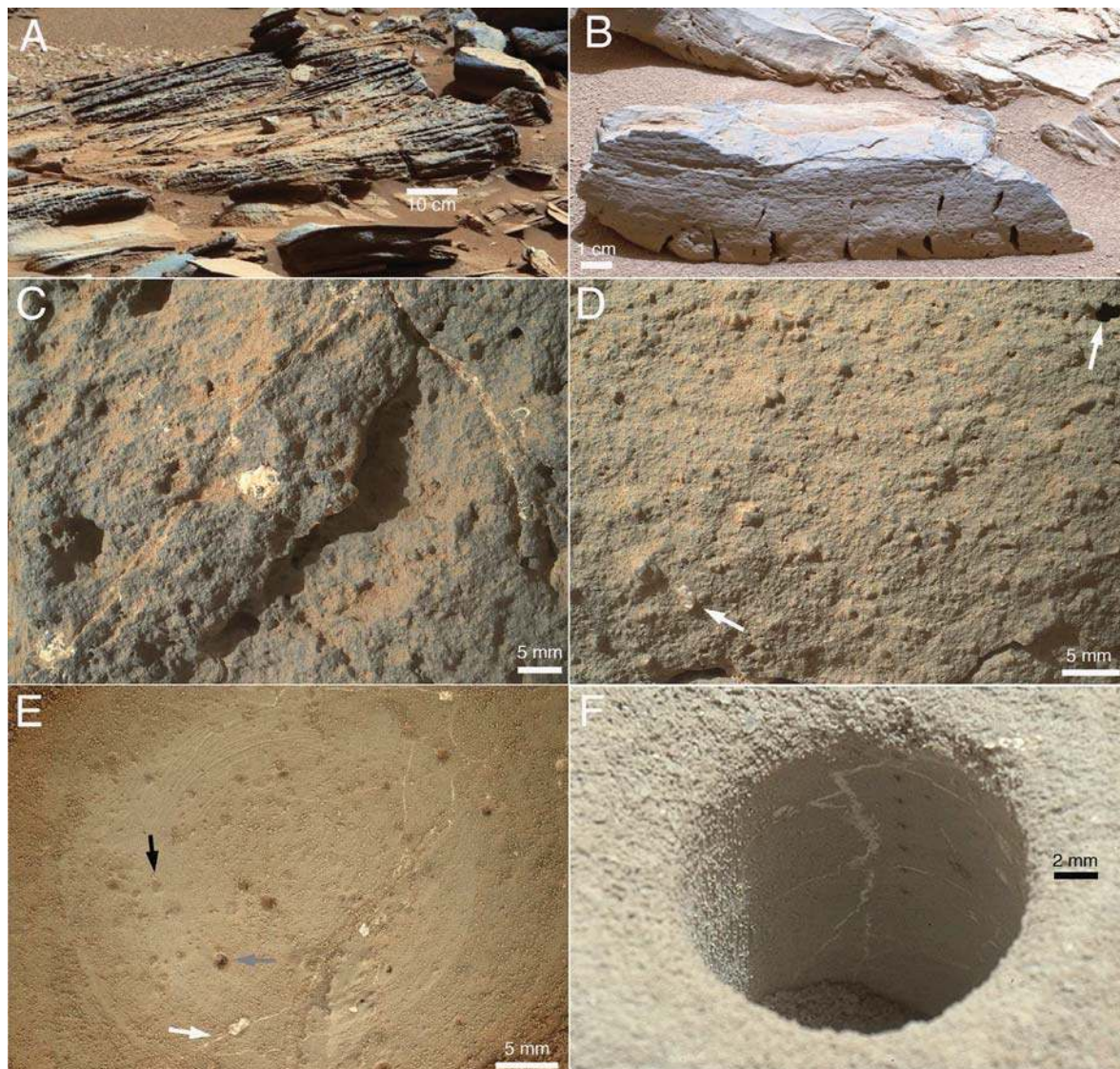
At a minimum, the Sheepbed member extends laterally across the width of the outcrop belt traversed by the rover: ~60 m. The Sheepbed member closely coincides with the BF map unit and from orbit is highlighted by its light tone and extensive meter- to decameter-scale fracture network. Tracing of the distinctive erosional pro-

file of the Sheepbed–Gillespie Lake contact shows that the Sheepbed member probably extends around the full width of Yellowknife Bay and covers a minimum area of ~4 km². However, we presume the Sheepbed member extends beneath the overlying rocks of the Gillespie Lake member; therefore, these are highly conservative minimum estimates. A reference section localized near the Selwyn target (Fig. 3) yields a thickness of 1.5 m for the member. This is a minimum thickness because its base is not exposed.

A detailed traverse (Selwyn reference section) using Mastcam, ChemCam, Alpha Particle

X-ray Spectrometer (APXS), and Mars Hand Lens Imager (MAHLI) measurements was conducted across the Sheepbed member for the purpose of providing context for the first samples obtained by drilling (Figs. 3 and 4). Observations revealed a patchy distribution of diagenetic (postdepositional) features, including nodules and veins, as discussed below. Mineralogic data show that the Sheepbed member has a substantial quantity of saponitic smectite clay minerals (~20%), probably formed by aqueous alteration of olivine (28). Geochemical results (19) show that both Sheepbed and Gillespie

Fig. 5. Sedimentary rocks of the Yellowknife Bay formation. (A) Shaler outcrop shows a variety of facies, including compound cross-bedding. The image was white-balanced and acquired by Mastcam-100 on sol 120. Image ID is 0120MR00075201302-00690E01_DXXX. (B) The Rocknest-3 rock, which represents the middle part of the Glenelg member, is fine-grained with planar lamination, shrinkage cracks, and millimeter-scale voids (well developed in the lower third section of the rock). This image is a subset of a mosaic of images that were white-balanced and acquired with Mastcam-100 on sol 59. Image IDs, as part of SEQID mcam00270, are 0059MR00027000001031-41E01_DXXX, 0059MR000-2700010103142E01_DXXX, 0059MR00027000201031-43E02_DXXX, and 0059MR-0002700030103144E01_DXXX. (C) Vuggy, medium-grained texture in the Point Lake outcrop ("Measles Point" target), middle of the Point Lake member. Note the thin fractures filled with light-toned material, interpreted as sulfate. ChemCam data show that white blebs, such as the one in the center, are composed of calcium sulfate. This focus merge product was acquired by MAHLI on sol 303, ID 0303MH0002900000103786R00. (D) Medium- to coarse-grained sandstone at the Gillespie Lake outcrop (see Fig. 2B), basal bed of the Gillespie Lake member. This bed is composed of poorly sorted, moderately well-rounded, dark to light grains, some of which have glassy luster (lower left arrow). A small amount of vuggy porosity is evident (upper right arrow), but otherwise the rock appears well cemented. The image was acquired by MAHLI on sol 132, ID 0132MH0001580010101221E01. (E) Mudstone in Sheepbed member, "Wernecke target" (see Fig. 3). The rock has been brushed, revealing homogeneous, fine-grained texture. Outlines of nodules (black arrow), void spaces (gray arrow), and sulfate-filled voids can be seen, and only those voids connected by hairline fractures (white arrow) have been filled with sulfates. Note the surface scoring by brush bristles, indicating softness of mudstone. The image was acquired by MAHLI on sol 169, ID 0169MH0002080020102218C00. (F) John Klein drill hole (see Fig. 3) reveals gray-colored cuttings, rock powder, and interior wall. Note the homogeneous, fine grain size of mudstone and the irregular network of sulfate-filled hairline fractures. An array of eight ChamCam shot points can be seen. The diameter of the hole is 1.6 cm. The image was acquired by MAHLI on sol 270, ID 0270MH0002540050102794C00.



sediments were derived from a provenance with a composition similar to average martian crust and that experienced negligible chemical weathering before deposition at Yellowknife Bay. Relatively subtle differences exist between the lower and upper parts of the Sheepbed, such that the top exhibits higher $\text{Al}_2\text{O}_3/\text{TiO}_2$ and Ni, consistent with a slight provenance change. A further change in trace elements (higher Cr, lower Ni and Ge), which occurs across the Sheepbed–Gillespie Lake contact, could result from either provenance differences or mineral sorting (e.g., chromite) associated with grain-size differences. Both APXS measurements and high-spatial resolution ChemCam targeted analyses provide evidence that crosscutting veins and fractures are composed of Ca-sulfate (see below).

The highest-resolution MAHLI images were acquired on sol 150 (Ekwir) and sol 169 (Wemecke) after brushing of the outcrop (Fig. 5E). These images reveal a very fine grain size based on the outlines of darker grains, and nearly all discernible grains are finer than 50 μm . By definition, a mudstone is a fine-grained sedimentary rock composed of 50% or more particles smaller than 62 μm (29). Although we cannot directly resolve and observe these <50- μm grains, we do know that ~20% are clays. It seems likely that the entire Sheepbed member is finer than most facies observed by Curiosity during the traverse down to Yellowknife Bay. Drilling of the outcrop produces gray powder and cuttings that are substantially different in color from the modern surface (Fig. 5F). Inspection of the drill hole reveals a gray rock that is fine-grained and homogeneous in texture, with the exception of light-toned fractures filled with minerals.

Independent evidence for the fine grain size of the Sheepbed mudstone comes from inferences of the physical responses of brushing and measurements made during drilling. The rotary motion of bristles during brushing substantially scored the surface of the outcrop in a fashion that shows deflections (Fig. 5E) around apparently harder, embedded dark nodules, suggesting that the mudstone matrix is softer. Comparison with terrestrial analog data suggests weak to medium hardness for the mudstone (30). Additional estimates of rock hardness are provided by comparison of rover engineering testbed data derived from terrestrial analogs with drill hardness data from the Sheepbed member (31). These data sets suggest that the Sheepbed rock is comparable to fluvial-to-lacustrine siltstones and mudstones collected from the ~10-million-year-old Ridge Basin of southern California (buried to depths of several kilometers) but not as hard as feldspathic sandstones derived from the same basin or as soft as pure commercially available kaolinite.

Sheepbed mudstones contain a few very thin intercalated beds that resist erosion (Fig. 4). These interbeds have not been studied in detail, but Mastcam data show them to be 1 to 2 cm thick and with substantial lateral continuity, as some can be traced for more than 100 m. Over-

all, the primary texture and grain size has a very uniform, massive appearance; it is well known, however, that lamination can be difficult to detect in many mudstones (29).

The very fine grain size, its apparently uniform distribution through the member, and the substantial lateral extent of centimeter-scale interbeds are all consistent with deposition of the primary grains due to settling from suspension, either from the atmosphere or a water column. The former might involve volcanic ash, eolian dust, or very distal impact fallout. Because the composition of the Sheepbed mudstone is basaltic and we cannot ascertain the very finest grain sizes, it is hard to discount an airfall origin. However, mapping relations, regional context, and local sedimentologic constraints all point to a distal alluvial fan or proximal lacustrine setting. In this setting, sediment-laden fluvial flows can deposit extensive fine-grained deposits, either as overbank flood deposits or at their downstream termination where they enter a body of standing water, such as a lake. Here, the decrease in flow turbulence as flows thin overbank and spread when leaving a channel, or encounter the still water of a lake, leads to deposition of suspended fines. We favor the lake interpretation because of the lateral extent and thickness of the Sheepbed member, the absence of fluvial channel bodies laterally adjacent to mudstone beds, and the fact that the mudstone underlies the Gillespie Lake member fluvial sheet sandstones over a large areal extent. Given our limited observations, it is difficult to exclude the hypothesis that this lake may have been seasonally dry (playa), or whether it responded to longer-term wet-dry climatic fluctuations. However, the compositional data favoring low salinity for the lake waters (19) and specific diagenetic textures discussed below (cement-filled syneresis cracks, rather than sediment desiccation cracks) suggest that it was perennially wet for the stratigraphic interval we examined.

Strata dominated by fluvial sediments that predate the advent of terrestrial vegetation on Earth are generally devoid of fines, except as occasional mud drapes that are preserved between sets of cross-stratified dune or bar deposits (32, 33). Sweeping of very broad and shallow channels that produce sheet flood deposits result in reworking of thin floodplain deposits that tend to not be preserved in the stratigraphic record. In addition, eolian reworking between flow events, in the absence of terrestrial vegetation to anchor fines, is also regarded as an efficient mechanism to sweep fines away from sites of deposition. Thus, a shallow lacustrine environment, which sequesters fine sediments over long time scales, is considered to be the most likely interpretation for the Sheepbed mudstone.

The grain size and composition may be inconsistent with typical Mars dust, which is even finer in grain size and characterized by SO_3 contents approaching 7% (20, 34), rather than

the Sheepbed mudstone, which is closer to 1% SO_3 (19). Although it seems conceptually possible to deposit relatively thick intervals of dust (35, 36), this might not be expected on an alluvial fan that is intermittently active enough to result in the substantial amounts of coarser-grained sediment accumulation seen in the Yellowknife Bay formation. Furthermore, estimates of dust accumulation rates are very low [on the order of 10 cm per million years (37)], as compared with fluvial or even lacustrine sediment accumulation rates, which are orders of magnitude higher (38).

Sheepbed compositions likely discount an origin as pure volcanic ash. Apart from variation imposed by sulfate-rich diagenetic features, the Sheepbed is geochemically uniform with an adjusted volatile-free composition close to average martian crust (19). Individual volcanic ash eruptions might be expected to display some variation in composition, and it would be coincidental for individual eruptions to all have a composition essentially the same as the average crust. If the >1.5-m-thick Sheepbed member represented a single eruption, this would require a local source that is not observed in the vicinity of Gale crater [probably within a few tens of kilometers for 1 m of thickness (39)].

Diagenesis of the Sheepbed Mudstone

A diverse set of diagenetic features that postdate deposition is observed in the Sheepbed mudstone member. Early diagenetic features include nodules, hollow nodules, and raised ridges (Figs. 6, A to C). These features are crosscut by later fractures, filled with light-toned cements (Fig. 6D) shown to be variably hydrated sulfate minerals based on ChemCam, APXS, Mastcam, and Chemistry and Mineralogy instrument (CheMin) data. Additionally, a dike-like feature known as the “snake” obliquely crosscuts the Sheepbed–Gillespie Lake contact and extends for several meters (Fig. 3).

Concentrations of nodules and hollow nodules have patchy distributions and pass laterally (Fig. 7) into mudstones that have raised ridges. Nodules are expressed as millimeter-scale protrusions of the outcrop with 3D differential relief suggesting crudely spherical geometry (Fig. 6A). The mean diameter of 4501 nodules is 1.2 mm, with minimum and maximum diameters of 0.4 and 8.2 mm, respectively. Brushing shows that nodules are more resistant to brush-induced etching and, thus, harder than the surrounding mudstone (Fig. 5E). Mastcam, MAHLI, and ChemCam Remote Micro-Imager (RMI) data show that nodules are dispersed from one another, cluster in patches (Fig. 7), do not form their own beds, and show no evidence of size grading, despite a broad range in diameters. These constraints suggest that the nodules are of concretionary origin rather than volcanic or impact lapilli (40, 41). Furthermore, no associated out-sized clasts that might be interpreted as potential bombs, or any breccias, are observed. Comparison of John Klein (fewer nodules and hollow

Exploring Martian Habitability

nodules) and Cumberland (more nodules and hollow nodules) compositional data indicates that nodule and hollow-nodule rim growth may have involved iron-bearing compounds such as the mineral akaganeite or even clay minerals (19, 28).

Hollow nodules are millimeter-scale circular rims with hollow centers (Fig. 6B). Three-dimensional exposures sometimes reveal pedestal-like structures with a circular rim surrounding a hollow, bowl-like depression. The outcrop therefore has a locally pitted appearance, suggesting erosional exposure of approximately spherical voids that had resistant rims, similar to the nodules. Resistance to weathering by the rims of the hollow nodules is indicated by the presence of lineations and “wind tails” carved into the outcrop, presumably by eolian saltation abrasion. Development of pedestals likely records lowering of the outcrop surface by prolonged eolian abrasion. Mastcam, MAHLI, and ChemCam RMI data show that hollow nod-

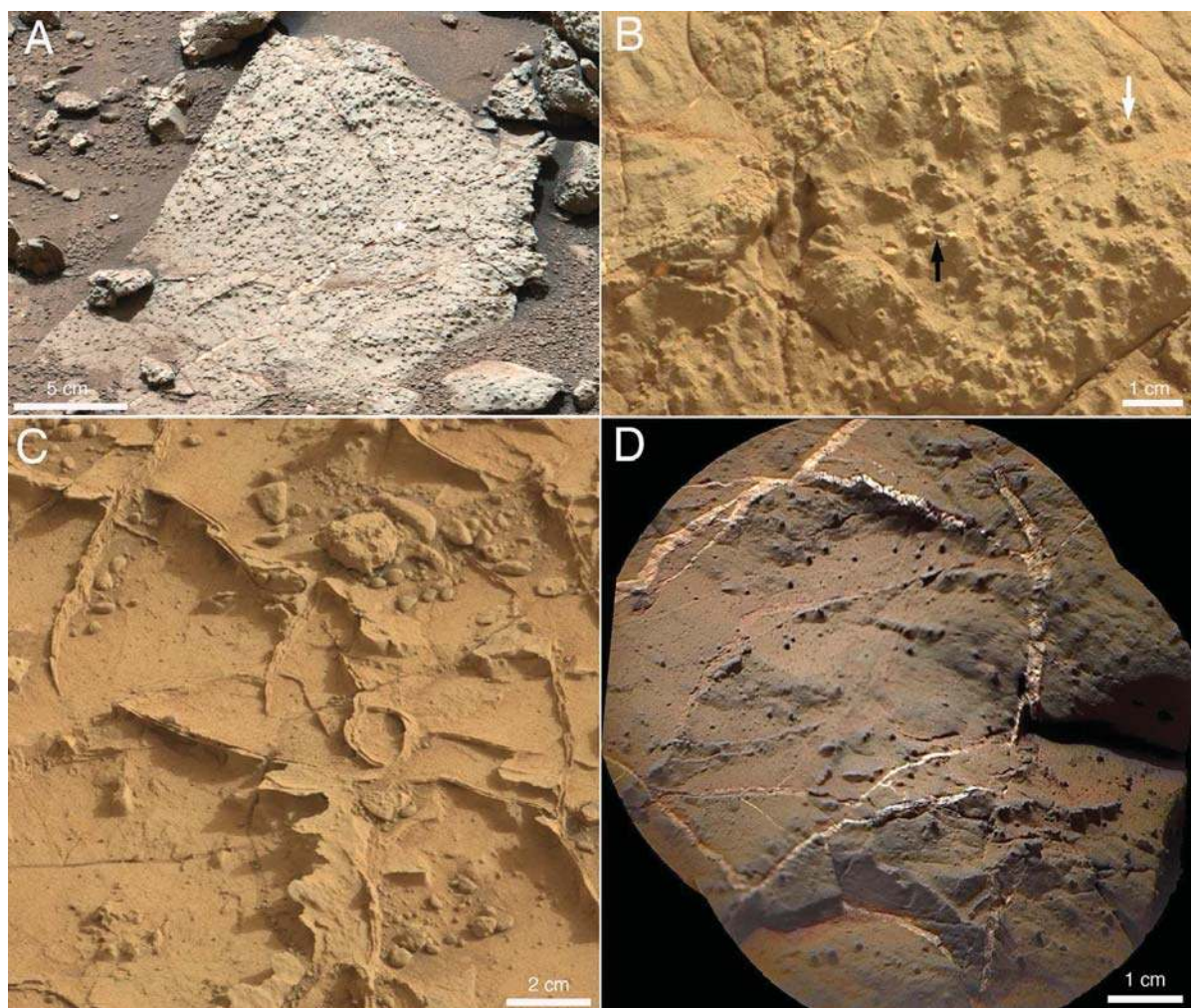
ules are similar in size to nodules with mean diameters of 1.2 mm, as well as minimum and maximum diameters of 0.6 and 5.6 mm, respectively ($n = 1248$ hollow nodules). We note that the upper size limit of hollow nodules is considerably smaller than that for nodules. The interior mean diameter of the void space defining the hollow is 0.7 mm ($n = 45$).

Hollow nodules are regarded as void spaces preserved within the Sheepbed mudstone. However, the hollow nodules are distinctly different from millimeter-scale diagenetic vugs, such as in the Gillespie Lake member or Burns formation of Meridiani Planum (40), in that the hollow nodules are associated with a ubiquitous circumscribed rim. Spherical voids of this type have not been observed previously on Mars and perhaps relate to their ability to be preserved—in this case, within fine mudstone sediments. Two options are possible to explain the void space,

which creates the hollow observed in outcrop: In the first hypothesis, the void space would represent a vanished mineral, whose higher solubility allowed easy dissolution during subsequent diagenetic fluid percolation events. Such minerals might have grown displacively in the sediment [for example, in evaporites (26)], thereby eliminating the need for the void to have been primary. However, no examples of filled hollow nodules were observed, with one very specific exception: Where hairline fractures filled with light-toned sulfate minerals intersect hollow nodules, the hollow nodules also are filled with sulfates. Otherwise, hollow nodules are devoid of any remnant of an earlier mineral. The sulfate-filled fractures represent a later phase of diagenesis (see below), and therefore, the sulfate minerals are not considered part of the primary environment.

This allows for a second hypothesis in which the hollow nodules represent primary voids,

Fig. 6. Diagenetic features of the Sheepbed member. (A) The Sheepbed target shows that millimeter-scale nodules, interpreted as concretions, are locally abundant. Note their dispersed distribution. The outcrop is crosscut by sulfate-filled fractures. This image is a subset of a mosaic acquired by Mastcam34 on sol 192. Image IDs are 0192ML-0010170240105705E01_DXXX and 0192ML00101-70070105688E01_DXXX. The image has been white-balanced. (B) Hollow nodules at the Bonnett Plume target (see Fig. 3) are defined by circular cross-sections through voids with raised rims (white arrow). Voids are filled with sulfate minerals where intersected by hairline fractures (black arrow) but are otherwise unfilled. The image was white-balanced and acquired by Mastcam-100 on sol 159. Image ID is 0159MR0008640050-201360E01_DXXX. (C) Raised ridges near the McGrath target have spindle-shaped terminations (see Fig. 3). Note the broadly varying strikes with dips ranging from vertical to 45°. Ridges most commonly have parallel sides, but they also have one or two additional infilling bands. All contour the local topography of the fracture margin and are interpreted as infilling cements. The image was white-balanced and acquired by Mastcam-100 on sol 164. Image ID is 0164MR0008850000201589E01_DXXX. (D) Sulfate-filled fractures at the Sheepbed target (see Fig. 3) are consistent with brittle deformation of lithified mudstone, followed by precipitation of sulfate from



mineralizing fluids. Note the abundant millimeter-scale nodules. The fracture fills are mostly flush with the bedrock surface, which contrasts with the nodules that weather in relief. This image is a ChemCam RMI mosaic that has been pan-sharpened using white-balanced Mastcam-100 color data. Images used in this composite are CR0_408676341EDR_F0051398CCAM01126M1, CR0_408675268EDR_F0051398CCAM01126M1, and Mastcam-100 ID 0126MR0007800000200786E01_DXXX.

such as gas bubbles formed during or soon after deposition. Several mechanisms could generate gas during or after sedimentation, including diagenetic dissolution and precipitation reactions that might produce gas as a by-product. These might include hydrogen gas produced during authigenic clay mineral formation via olivine “saponitization” (28); ultraviolet (UV) photo-oxidation of reduced minerals, such as siderite, to produce authigenic iron oxide (e.g., magnetite) and hydrogen gas (42); pressure-induced release of dissolved gas from sedimentary pore fluids; and processes that reflect distinct Mars environments, such as boiling of water in the presence of critically low atmospheric water vapor pressure. Data are insufficient to distinguish among these possibilities. However, the last of these can be discounted by the presence of thin interbeds within the Sheepbed mudstone, which suggests that wholesale churning of the mudstone did not occur. A final possibility considers the potential role of microbes, if life had ever evolved

on Mars. Terrestrial sediments are pervaded by microbes, which produce a variety of gases that become trapped as bubbles where lithification is early and rapid (43). However, it should be clear enough that this mechanism can only be invoked as a serious possibility after all other abiotic hypotheses have been discounted. This is not the case for our current data set, and we include this only for the sake of completeness.

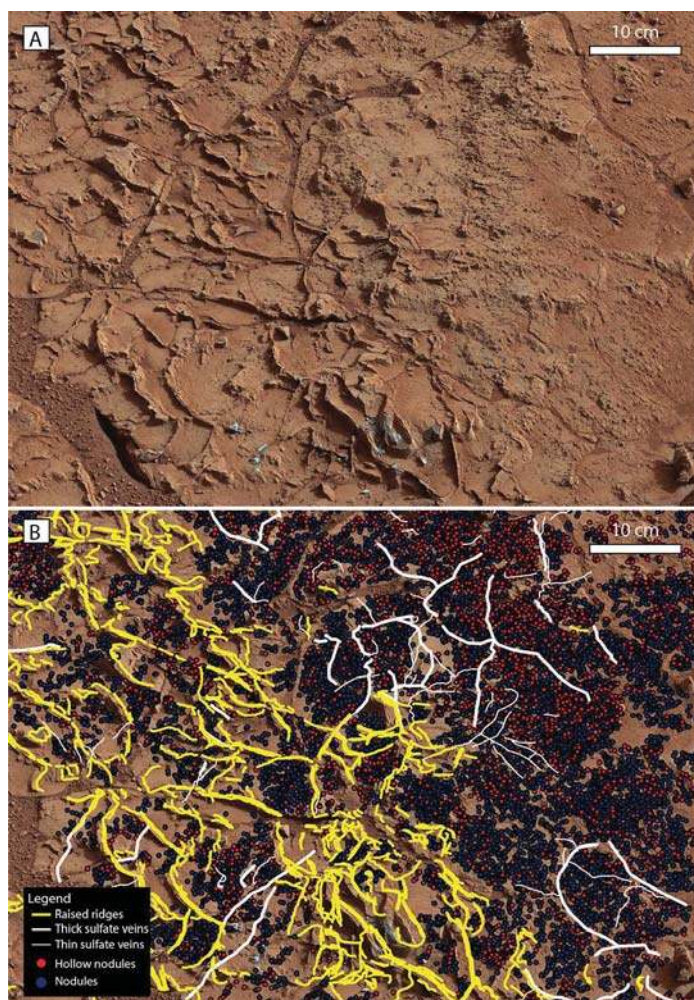
Raised ridges (44) are narrow, curvilinear ridges that weather in raised relief, and, as mentioned above, they substitute laterally for nodules and hollow nodules (Fig. 7). The raised ridges are restricted to the Sheepbed mudstone, but one poorly constrained example was noted at a higher stratigraphic level (observed only from a distance; exact stratigraphic position and facies are uncertain). Measurement of 1619 raised ridges in the Sheepbed suggests that they extend at least several centimeters in length and have a mean width of 2.7 mm, with maximum widths of up to 5.8 mm. Raised ridges have spindle-

shaped, pointed terminations (Fig. 6C). Most have subvertical orientation but can dip more gently, down to 45° or less, and their strike trends in all directions (Fig. 6C). Intersections of 90° between ridges are common. A distinctive attribute is that most ridges show internal banding, which contours the trend of the ridge, following closely all local deviations, including right-angle bends. Two parallel bands are most common, although three to four are also observed (Fig. 6C). Raised ridges are most simply interpreted as early diagenetic cracks that formed in consolidated or even partly lithified mudstone, then filled with one or more generations of cement that isopachously encrust the margins of the cracks. This infilling material has greater resistance to eolian erosion than the mudstone, resulting in its expression as ridges. ChemCam and APXS analyses have identified elevated Mg, Fe, Si, Cl, Li, and Br in the raised ridges, but insufficient evidence exists to confidently identify specific mineral phases (19). A strong correlation exists between Mg, Fe, and Cl, possibly indicating that a chloride phase may be present, but if so, it can only explain a small amount of the Mg and Fe enrichment. Alternatively, the correlation could result from a phase other than a chloride that contains substantial Cl. For example, ChemMin data suggest the presence of akaganeite (28).

Taken alone, the development of very early cracks in fluvial-to-lacustrine mudstones might be most simply explained by desiccation of wet sediment: Generally, desiccation cracks have polygonal geometry. Therefore, the nonpolygonal geometry of the cracks is unexpected, as are the isopachous, banded materials that fill in the fractures. Furthermore, the abundance of raised ridges is anticorrelated with the abundance of nodules and hollow nodules, suggesting that all three phenomena are genetically related, which is not observed for desiccation cracks on Earth. An alternative mechanism proposes that syn-depositional pore fluids (perhaps mixing with surface runoff waters) may have been important in driving diagenetic reactions that triggered early mineral precipitation, gas production, and volume contraction close to the sediment-water interface. On Earth, a related but poorly understood process known as “syneresis” is thought to relate to clay mineral flocculation during mixing of saline and less saline waters, resulting in differential contraction of the substrate (45). Seismic shaking, perhaps induced by impacts on Mars, may help facilitate this process (46). The result is spindle-shaped cracks, a few centimeters long, that look very much like the Sheepbed raised ridges. In most cases on Earth, the cracks are filled by other sediments; however, in one very particular instance known as “molar tooth structure,” spindle-shaped cracks and related subspherical voids are filled with mineral (calcite) cement. The origin of subaqueous cracks on Earth is poorly understood, though the involvement of gas in generating the cracks and voids

Fig. 7. Map of diagenetic features showing spatial relations between fabric elements. The rock surface coincides with a bedding plane. Note that nodules and hollow nodules pass laterally into raised ridges, suggesting variations in lithologic or diagenetic fluid properties (see text). (A) A subset of the Mastcam-100 workspace mosaic acquired by the Curiosity on sol 164. This perspective mosaic is white-balanced and was used as a base map. (B) The sol 164 workspace mosaic annotated to show the distribution of early diagenetic features (nodules, hollow nodules, raised ridges) and later diagenetic features (thick to thin sulfate-filled fractures).

Erosion-resistant raised ridges were outlined individually and generally exhibit parallel sets of isopachous linings. Thin (<5 mm in width) sulfate veins have relatively constant thickness, whereas thicker sulfate veins have more variable thickness. Both sets of veins crosscut other diagenetic features. Hollow nodules are circular features (~1 mm in diameter) that stand out in raised relief from the outcrop surface and are distinguished from nodules by the presence of a small depression in the center of the feature. Because hollow nodule diameters are often at or below the resolution limits of this mosaic (confirmed by MAHLI observations), hollow nodules are probably underrepresented relative to nodules. This image is a subset of the Mastcam-100 workspace mosaic from sol 164. For mosaic image IDs, see (31).



represented by molar tooth structure is likely (43, 47). As with the hollow nodules, a number of processes could generate gases in martian sediments. In general, the distribution of subaqueous shrinkage cracks reflects differential strength of the substrate materials, which may similarly be represented in the Sheepbed member by the spatial segregation of the nodules and hollow nodules versus raised ridges.

A distinct feature within lower Yellowknife Bay strata is a dike-like, dark-toned rock unit referred to as the “snake,” named after the target Snake River (see Fig. 3). This feature extends from the lowest stratigraphic level of the exposed Sheepbed member, crosscuts the Sheepbed–Gillespie Lake contact, and tapers out within the middle of the overlying Gillespie Lake member (Figs. 3 and 4). The snake is 6 to 10 cm wide and can be traced across bedding for ~5 m, cutting up through almost 1 m of stratigraphic section. MAHLI images of unbrushed parts of the snake suggest that it has a fine-grained clastic texture, but with larger fragments present suggestive of intraclasts (fig. S2). Elemental data show it to be similar in major elements but distinct from the Sheepbed member in trace element abundances (19). The snake can be traced to its stratigraphically highest position, where it terminates in a small anticline. At this terminus, thicker, massive beds extend laterally away from the core of the anticline. The snake has several possible interpretations, including a narrow igneous dike of basaltic composition; a large-scale crack that is filled from above, perhaps associated with subaerial exposure or ice wedging; or a sedimentary intrusion associated with compaction and dewatering of the mudstone or subadjacent strata.

The fine-grained, basaltic composition of the snake makes it hard to exclude an igneous intrusion with basaltic composition. The feature is so thin that grain-size variations consistent with chilled margins would be unexpected at scales within MAHLI’s limit of resolution; the entire dike would be expected to be very fine grained. Filling from above is discounted due to the presence of the small anticline, which suggests injection of fluidized material from below rather than settling of sediment from above. In addition, no evidence of layering, suggestive of downward percolation of sediments, is observed within the feature. Furthermore, no other crack-like features are observed to extend downward from a common stratigraphic surface. The third possibility—intrusion of plastically deformed sedimentary materials—occurs in some sedimentary environments with high sedimentation rates (24, 25, 48, 49). Upward and lateral injection of compacting muds and sands is most commonly expressed as dikes and sills that both crosscut strata and intrude along bedding planes. The similarity of both composition and texture to that of the Sheepbed mudstone, the presence of possible intraclasts, and upward deflection of strata at its terminus are all consistent with

sedimentary injection (24, 25). This suggests a sediment accumulation rate for the Yellowknife Bay formation (or sediments below it) that was high enough so that pore fluid pressures built up to the point where expulsion along discrete zones of weakness, rather than along grain boundaries, was the preferred pathway for escape of compacting sediments and interstitial pore fluids. As the porosity and permeability of the sediment was reduced via compaction and cementation, the strata may have ruptured, allowing fluids to escape and form sedimentary dikes and sills. Finally, this process could have been aided by impact-induced seismic activity (50).

Fractures filled with light-toned sulfate cements also are regarded to have formed later in the diagenetic sequence because they cut the entire Yellowknife Bay formation. In contrast to the raised ridges, the sulfate-filled fractures are flush, even slightly depressed, with respect to adjacent unfractured outcrop (Figs. 6 and 7). Sulfate-filled fractures have highly diverse orientations spanning from vertical to subhorizontal; range in length from less than 1 cm to more than 30 cm; and range in width from “hairline” (submillimeter) to 8 mm, with a mean width of 2.3 mm (Figs. 5E and 6D). MAHLI images of the John Klein drill hole show that sulfate-filled fractures of hairline width have complex orientations with horizontal as well as vertical trends (Fig. 5F). Where these hairline-width fractures intersect hollow nodule void spaces (Fig. 5E), the latter are also filled with hydrated and anhydrous calcium sulfate minerals, as determined by CheMin, ChemCam, and APXS data (19, 28). At a larger scale, the observation of fracture-filling hydrated sulfate mineralogy can be extended through Mastcam observations. Calibrated Mastcam spectra show evidence for hydration associated with most but not all of the fracture fills, including limited hydration in hairline fractures that penetrate and fill the void space of hollow nodules (28).

To form, the sulfate-filled fractures first require lithification of the Sheepbed and Gillespie Lake members to allow applied stress to cause brittle strain of the bedrock (51). Once open, the fracture networks then act as conduits for fluid transport, resulting in precipitation of cementing minerals within these initially low permeability sedimentary rocks. The fracture networks were possibly created by hydraulic fracturing due to high fluid pressures that would have been obtained during burial of Yellowknife Bay strata (51). The variation in hydration state of vein-filling sulfate mineralogy between gypsum, bassinite, and anhydrite could reflect primary variations in environmental conditions during deposition or, alternatively, diagenesis associated with burial and/or desiccation during subsequent erosion and exposure (28).

A final observation regarding later diagenesis concerns the Gillespie Lake sandstone member, which shows evidence for possible secondary porosity. Irregular vugs larger than the diameter of the average grain size (Fig. 5D) suggest that

larger grains, or perhaps clusters of grains, were leached during fluid circulation. Alternatively, it is possible that these vugs represent intraclasts of mudstone that degraded by weathering. Another possibility is dissolution of preferentially more soluble early diagenetic minerals; however, the irregular shape of the vugs is not consistent with dissolved evaporite crystals.

The diagenesis of the Sheepbed member suggests a complex aqueous history involving at least two distinctly different water masses. After emplacement in distal alluvial-to-lacustrine environments, pore spaces in primary sediments were occluded by cements, and early diagenetic hollow nodule voids (gas bubbles?) may have been formed, along with concretions. At approximately the same time, nonpolygonal fissures in the lithifying sediment opened up and became lined with void-filling isopachous rim cements. All of these events, with the exception of hollow nodule void formation, must have occluded much of the primary porosity. This episode of diagenesis did not substantially change the bulk rock chemistry of these units relative to average martian basalt and are thus considered to have involved isochemical alteration (19). This suggests that clay mineral and magnetite formation happened largely in situ, as a result of alteration of olivine to form authigenic saponitic smectite (19, 28). In addition to pore-filling cement, it is possible that these minerals also precipitated as concretions, as well as isopachous rim cements within raised ridge fractures. After lithification, fracture porosity was created that was then filled with a distinctly different fluid that resulted in precipitation of sulfate cements (19, 28). The absence of elevated sulfate abundances in the Sheepbed mudstone, except for within these fractures, indicates that cementation and permeability reduction of the mudstone was extensive enough so that sulfate-rich fluids percolating through fractures and hairline fractures did not invade the mudstone or sandstone matrix (19, 28). The first diagenetic fluid, possibly derived from the waters that transported sediments, was dominated by dissolved silicate and iron oxide minerals. The second, subsequent fluid was dominated by sulfates and perhaps sampled a broader, basin-wide hydrologic system. CheMin and Sample Analysis at Mars instrument (SAM) data additionally point to a substantial x-ray amorphous fraction of material that could have been involved in diagenesis, as well as potential sulfide minerals (28, 52).

Sheepbed Mudstone: Record of Habitable Environment

The regional geologic context, sedimentologic framework, and geochemistry and mineralogy of the Sheepbed mudstone all point to an ancient environment that would have been habitable to a broad range of prokaryotic microorganisms. The relatively neutral pH indicated by clay mineral stability (28); high water activity indicated by low salinity for primary and early

diagenetic environments (19); the variable redox states indicated by presence of magnetite, sulfate, and sulfide minerals and compounds (28, 52); and the apparent long duration of the aqueous environment(s) all support this interpretation.

The Sheepbed mudstone closely coincides with the BF map unit (Fig. 1), suggesting that this rock unit may have extended beyond the confines of Yellowknife Bay and minimally covered an area of ~30 km², not including buried or eroded equivalents. Repeated flows of water (17) and the likely presence of a body of standing water point to a sustained habitable environment. The durations of the primary, early diagenetic, and later diagenetic aqueous environments were substantial enough to create geologic and geochemical fingerprints of prolonged fluvio-lacustrine and diagenetic processes markedly similar to those that formed commonly during early Earth history (32, 53, 54).

A rough estimate of the minimum duration of the lacustrine environment is provided by the minimum thickness of the Sheepbed member. Given 1.5 m, applying a mean sediment accumulation rate for lacustrine strata of 1 m per 1000 years (38) yields a duration of 1500 years. Lacustrine sediment accumulation rates vary by several orders of magnitude (38); thus, the hypothesized lake could represent hundreds to tens of thousands of years. If the aqueous environments represented by overlying strata are considered, such as the Gillespie Lake and Glenelg members, then this duration increases. Indeed, the regional geologic context suggests that the Yellowknife Bay formation may be just a small part of a thick series of fluvio-lacustrine rocks that may exist in the subsurface for hundreds of meters. Moreover, it is possible that hundreds of meters of fluvial-lacustrine strata have been eroded. The sulfate-filled fractures are consistent with some amount of burial, and independent support for this is allowed (but not required) by possible incipient chloritization of mudstone smectite (28). Therefore, it is entirely plausible that, collectively, these hundreds of meters of strata could represent millions to tens of millions of years.

Episodic drying of this lake environment seems certain over this long time scale if not over shorter spans represented by thicknesses equivalent to the exposed Sheepbed mudstone. However, even if the lake was dry periodically or if unconformities interrupted the continuity of fluvial-lacustrine sedimentation, the presence of former groundwater—well documented for many ancient Mars phenomena (55–57)—may have provided a refugium to sustain a chemolithotrophic biosphere. Episodic lake rejuvenation would permit a subsurface chemoautotrophic microbiota to emerge to the surface in response to a rise in groundwater level.

We can more specifically assess the habitability of the former environment represented by the Sheepbed mudstone from a perspective shaped by our knowledge of terrestrial biology. This ap-

proach involves identification of the chemical and physical environmental requirements that would support prokaryotic microbes, if similarly simple forms of life had ever evolved on Mars. Bacteria and archaea represent ancient, abundant, and metabolically diverse domains of life on Earth and are able to withstand a wide range of environmental conditions (58–61). They can engage in a multitude of autotrophic and heterotrophic pathways and use a variety of electron donor-acceptor pairs for acquisition of carbon and energy (62–65). We can envisage many combinations of terrestrial microbes that would be suited to form a martian biosphere founded on chemolithoautotrophy at Yellowknife Bay.

As a first step, it is useful to assess the key nutrients required to support terrestrial bacteria and archaea (66). The defining chemistry is inorganic: elemental inventory, liquid water, redox potential (Eh), pH, redox couples, and a diversity of chemical compounds. Organic molecules are not required environmental constituents because they can be synthesized *de novo* through the primitive autotrophic pathways, such as methanogenesis and acetogenesis (67). We have measured H, O, S, C, N, and P in minerals and other compounds with the APXS, ChemCam, CheMin, and SAM instruments, as well as important metals such as Fe, Mg, and Mn (19, 28, 52). All but P are observed in SAM evolved gas analysis (EGA) data as volatiles, and all but P and N are known to be part of mineral structures observed in CheMin data. We do not have the capability to determine whether P would have been bioavailable, and CheMin observed no highly soluble P-bearing minerals. On the other hand, CheMin data indicate substantial breakdown of olivine in the mudstone at Cumberland (28), and P can be a trace-to-minor element in that mineral (68), suggesting potential P mobility during diagenesis. Nitrogen-bearing compounds, in both reduced and oxidized forms, were measured by SAM during EGA (52). Evolved NO (mass-to-charge ratio = 30) has an abundance that is substantially above background, pointing to a likely source within the mudstone. Bioavailable N could conceivably have been derived from the atmosphere via fixation by sulfide minerals during reactions similar to that seen in pyrrhotite, pyrite, and magnetite assemblages on Earth (69, 70).

SAM EGA data from John Klein show carbon to be present, either in crystalline (carbonate?) phases below 1% abundance, as a carbonate-bearing component in the x-ray amorphous material detected by CheMin, or derived from complex organic sources not detectable by SAM. Thus, most or all the major ingredients required to support life are present in the Sheepbed mudstone.

As a second step, we identify plausible redox couples represented by minerals and other compounds preserved in the Sheepbed mudstone that might have comprised basic energy-yielding reactions for an elementary microbial community (66). The presence of both sulfur and iron is indicated by ChemCam, APXS, CheMin,

and SAM data. Further, observation of key inorganic volatiles such as H₂O, H₂S, SO₂, H₂, and CO₂, generated during SAM pyrolysis (52), suggests a wider range of redox conditions for the surface of ancient Mars than previously recognized based on Viking, Phoenix, and Mars Exploration Rover data (71–74). For example, SAM analysis of the John Klein sample shows higher H₂S/SO₂ average ratios than were found for the Rocknest soil sample: 0.06 for John Klein (52) versus 0.01 for Rocknest (75). These data suggest a higher proportion of reduced sulfur relative to oxidized sulfur pointing to a plausible redox couple for prokaryotic respiration.

Iron also presents intriguing possibilities for redox coupling. CheMin analyses indicate the presence of a substantial quantity of likely authigenic magnetite (~7% of crystalline components) in Sheepbed mudstones (28). The presence of an authigenic, partially reduced Fe-oxide phase in a martian sedimentary rock represents a notable departure from previous secondary Fe-mineral detections on Mars, where ferric iron has proven to be the dominant redox state (76–78). The magnetite measured by CheMin does show evidence for oxidation of some of its ferrous iron to form the ferric defect-spinel maghemite (28). The gray color of the freshly exposed Sheepbed mudstone (Fig. 5F) contrasts sharply with the reddish color of the freshly exposed, highly oxidized, hematite-bearing rocks of Meridiani Planum (79), emphasizing the lower oxidation state of iron in the Sheepbed mudstone. There are a number of potential mechanisms for the production of authigenic magnetite, all of which are promoted by waters with relatively low Eh and neutral to alkaline pH (80). Under such conditions, aqueous Fe²⁺-hydroxide species can precipitate and ultimately transform to magnetite. Perhaps not coincidentally, neutral-to-alkaline pH conditions also are likely to promote the formation of clay minerals. Potential authigenic magnetite formation pathways include UV-promoted reactions with dissolved Fe²⁺ in the water column (81) or with carbonate minerals in the sediment (42), and partial oxidation of dissolved Fe²⁺ by dissolved O₂ (80). Perhaps the most likely scenario is via clay formation and saponitization (28). However the magnetite may have formed, the additional presence of Fe³⁺ in nanophase iron oxide indicated by combined APXS/CheMin and SAM data (19, 28, 52) provides the other half of an iron-based redox couple in the Sheepbed mudstone.

Salinity provides another important constraint on habitability because it affects water activity, which, when low, can restrict cellular physiology (82–84). All natural waters contain dissolved ions that, through their interactions with water molecules, limit the availability of H₂O for hydration reactions. Water activity is defined by microbiologists as $a_w = n_1/(n_1 + n_2)$, where n_1 equals moles of water and n_2 equals moles of solute (82). Most terrestrial organisms cannot survive below $a_w = 0.9$, a few halophilic

bacteria grow at $a_w = 0.85$, and some archaea can grow at $a_w = 0.75$ (83). In the Burns formation at Meridiani Planum, the abundance of calcium and magnesium sulfate minerals detected by the Opportunity rover is so great that it conservatively reconstructs to an ancient water activity of $a_w = 0.78$ to 0.86 , and possibly as low as $a_w = 0.5$ (85). This shows that water activity was so low during deposition and diagenesis of the Burns formation that even though water was present, the environment would probably have been uninhabitable to all but the hardest halophiles (86). In contrast, the Sheepbed mudstone provides evidence for both low salinity sediment-transporting water and early diagenetic water, given its very low sulfur and chlorine content (19). It is possible that small amounts of chloride salt were present (19, 28); however, these were in low enough abundance (<1 to 2%) so as to not substantially reduce water activity and create a challenge for prokaryotic microbes. Higher salinities are indicated for the waters that percolated through late diagenetic fractures; however, these were probably of modest salinity given their exclusively calcium sulfate composition (85). On Earth, calcium sulfate precipitation is common in evaporitic environments that thrive with diverse microorganisms (87). Furthermore, there is evidence that halophiles may resist the destructive effects of radiation (88), thought to limit habitability in the martian surface environment (89).

Finally, estimates of pH are similarly important for understanding habitability. Again, in the Burns formation at Meridiani Planum, the presence of jarosite indicates low pH with ancient waters that contained sulfuric acid (40). However, such low pH does not discount the presence of life; terrestrial analog environments show that microbes can survive under these conditions because they have adapted their biochemistries to maintain near neutral conditions internally (90). Nevertheless, the presence of more neutral waters allows a broader range of microorganisms to be viable. The presence of clay minerals in the Sheepbed mudstone, the absence of any evidence for Al mobility, and the absence of iron sulfate minerals, even in the sulfate-filled late diagenetic veins, indicates a relatively neutral pH. This neutral pH could have existed for all phases of aqueous history, from the primary waters of deposition that may have created a body of standing water, to early diagenesis, and through the close of late diagenesis.

At Yellowknife Bay, there is no hint of the strongly acidic conditions that have been thought to especially describe the planet's younger history of aqueous alteration, sedimentation, and habitability (74, 83, 91). The record of aqueous activity at Yellowknife Bay is likely prolonged and complex, involving several stages of diagenesis, including clay formation, that culminate with precipitation of calcium sulfate salts in veins, but without attendant indicators of acidic waters such as iron sulfates. The sim-

plest interpretation of the sequence of diagenetic events would involve progressive desiccation of mildly saline, pH-neutral waters—a very Earth-like scenario (92). Such conditions have been envisaged for the very early history of Mars (91), but it is only recently that they have been considered viable for a younger age (7, 93, 94). The surprising result is that the stratigraphy of Yellowknife Bay may not only preserve evidence of a habitable environment, but one that is relatively young by martian standards. In the most conservative scenario allowed by geologic mapping, the Yellowknife Bay formation represents part of the older fill of Gale crater, and therefore is roughly Early Hesperian in age (6), perhaps overlapping with or postdating times of bedded sulfate formation elsewhere on Mars. This would indicate that times of sustained surface water, neutral pH, and authigenic clay formation extended later into Mars' history. The potentially young age of clay formation (and habitability) does not invalidate the general trend that most rocks that interacted with water early in Mars' history produced clays, and those that interacted later produced sulfates. However, much like Earth's time-dependent records of iron formation (95, 96) and carbonates (97, 98), it points to the need to understand those special conditions, which allow a distinctive aqueous environment to persist for broad spans of geologic time or to recur when the favorable conditions again emerge. Curiosity's detection of a relatively young and markedly Earth-like habitable environment at Gale crater underscores the biologic potential of relatively young fluvio-lacustrine environments.

References and Notes

1. J. P. Grotzinger *et al.*, Mars Science Laboratory Mission and Science Investigation, Mars Science Laboratory Mission and Science Investigation. *Space Sci. Rev.* **170**, 5–56 (2012). doi: [10.1007/s11214-012-9892-2](https://doi.org/10.1007/s11214-012-9892-2)
2. R. P. I. Irwin III, A. D. Howard, R. A. Craddock, J. M. Moore, An intense terminal epoch of widespread fluvial activity on early Mars: 2. Increased runoff and paleolake development. *J. Geophys. Res.* **110**, E12S15 (2005). doi: [10.1029/2005JE002460](https://doi.org/10.1029/2005JE002460)
3. M. C. Malin, K. S. Edgett, Sedimentary rocks of early Mars. *Science* **290**, 1927–1937 (2000). doi: [10.1126/science.290.5498.1927](https://doi.org/10.1126/science.290.5498.1927); pmid: [11110654](https://pubmed.ncbi.nlm.nih.gov/11110654/)
4. R. B. Anderson, J. F. Bell III, Geologic mapping and characterization of Gale crater and implications for its potential as a Mars Science Laboratory landing site. *The Mars Journal* **5**, 76–128 (2010). doi: [10.1555/mars.2010.0004](https://doi.org/10.1555/mars.2010.0004)
5. R. E. Milliken, D. L. Bish, Sources and sinks of clay minerals on Mars. *Philos. Mag.* **90**, 2293–2308 (2010). doi: [10.1080/14786430903575132](https://doi.org/10.1080/14786430903575132)
6. B. J. Thomson *et al.*, Constraints on the origin and evolution of the layered mound in Gale crater, Mars using Mars Reconnaissance Orbiter data. *Icarus* **214**, 413–432 (2011). doi: [10.1016/j.icarus.2011.05.002](https://doi.org/10.1016/j.icarus.2011.05.002)
7. J. P. Grotzinger, R. E. Milliken, The sedimentary rock record of Mars: Distribution, origins, and global stratigraphy, in *Sedimentary Geology of Mars*, J. Grotzinger, R. E. Milliken, Eds. (SEPM Special Publication, Tulsa, OK, 2012), vol. 102.
8. J. P. Grotzinger, Beyond water on Mars. *Nat. Geosci.* **2**, 231–233 (2009). doi: [10.1038/ngeo480](https://doi.org/10.1038/ngeo480)
9. A. Fraeman *et al.*, A hematite-bearing layer in Gale crater: Mapping and implications for past aqueous conditions. *Geology* **41**, 1103–1106 (2013). doi: [10.1130/G34613.1](https://doi.org/10.1130/G34613.1)
10. This decision was made by the entire MSL Science Team with strong consensus to drive a relatively short distance (~500 m) to examine rocks with higher thermal inertia values that also had an apparently strong spatial association with the AF unit. The prediction based on mapping was that fluvial and/or lacustrine rocks potentially derived from the crater rim might be encountered. The strata exposed at the base of Mt. Sharp are still considered to be the primary mission objective, and the team has established a departure date from Yellowknife Bay of the first week in July 2013.
11. The names used for rock and soil targets studied by Curiosity and reported in this paper are derived from established rock formations of northern Canada. In turn, these names derive from names of local geographic features where they occur, per convention, such as mountains, streams, lakes, bays, etc. This choice of naming scheme celebrates the city of Yellowknife, Northwest Territories, long known to be a port of departure for geologic mapping expeditions into some of the oldest rocks of North America. Yellowknife crater was designated by the International Astronomical Union, and Yellowknife Bay demarcates the area into which Curiosity descended to study its geologic history.
12. A base map was created based on 25-cm-per-pixel HiRISE visible image data, 1-m-per-pixel elevation data, and 100-m-per-pixel Thermal Emission Imaging System data that was subdivided into 140 1.2° by 1.2-km (0.025°) quadrangles and mapped in detail by more than 30 team members. The group map was compiled, consolidated, and iteratively refined into a single GIS project.
13. In addition, minor units of eolian fill and/or bedforms and ejecta blankets adjacent to larger craters are present but are not discussed further.
14. Bradbury Landing refers to the patch of ground where Curiosity touched down on the surface of Mars. It commemorates the noted science fiction writer Raymond Bradbury and was designated by NASA.
15. E. M. Stolper *et al.*, The petrochemistry of Jake_M: A martian mugearite. *Science* **341**, 1239463 (2013). doi: [10.1126/science.1239463](https://doi.org/10.1126/science.1239463); pmid: [24072927](https://pubmed.ncbi.nlm.nih.gov/24072927/)
16. P.-Y. Meslin *et al.*, Soil diversity and hydration as observed by ChemCam at Gale crater, Mars. *Science* **341**, 1238670 (2013). doi: [10.1126/science.1238670](https://doi.org/10.1126/science.1238670); pmid: [24072924](https://pubmed.ncbi.nlm.nih.gov/24072924/)
17. R. M. E. Williams *et al.*, Martian fluvial conglomerates at Gale crater. *Science* **340**, 1068–1072 (2013). doi: [10.1126/science.1237317](https://doi.org/10.1126/science.1237317); pmid: [23723230](https://pubmed.ncbi.nlm.nih.gov/23723230/)
18. The morphology of the “bay” is the result of postdepositional erosion, perhaps by eolian processes, as shown by the exposures of stratified rock that record dissection. These are eroded rocks and not, for example, shoreline berms. Therefore, the present-day topography does not reflect that at the time of deposition of those strata.
19. S. M. McLennan *et al.*, Elemental geochemistry of sedimentary rocks at Yellowknife Bay, Gale crater, Mars. *Science* **343**, 1244734 (2014).
20. S. R. Taylor, S. M. McLennan, *Planetary Crusts: Their Composition, Origin, and Evolution* (Cambridge Univ. Press, Cambridge, 2009).
21. M. E. Schmidt *et al.*, APXS of first rocks encountered by Curiosity in Gale crater: Geochemical diversity and volatile element (K and Zn) enrichment. *Lunar Planet. Sci. Conf.* **44**, abstract 1278 (2013).
22. N. D. Smith, Some sedimentological aspects of planar cross-stratification in a sandy braided river. *J. Sediment. Petrol.* **42**, 624–634 (1972).
23. G. A. Macdonald, Pahoehe, aa, and block lava. *Am. J. Sci.* **251**, 169–191 (1953). doi: [10.2475/ajs.251.3.169](https://doi.org/10.2475/ajs.251.3.169)
24. A. Hurst, A. Scott, M. Vigorito, Physical characteristics of sand injectites. *Earth Sci. Rev.* **106**, 215–246 (2011). doi: [10.1016/j.earscirev.2011.02.004](https://doi.org/10.1016/j.earscirev.2011.02.004)

25. J. A. Ross, J. Peakall, G. M. Keevil, An integrated model of extrusive sand injectites in cohesionless sediments. *Sedimentology* **58**, 1693–1715 (2011). doi: [10.1111/j.1365-3091.2011.01230.x](https://doi.org/10.1111/j.1365-3091.2011.01230.x)
26. M. El-Tabakh, R. Riccioni, B. C. Schreiber, Evolution of late Triassic rift basin evaporites (Passaic Formation): Newark Basin, Eastern North America. *Sedimentology* **44**, 767–790 (1997). doi: [10.1046/j.1365-3091.1997.d01-47.x](https://doi.org/10.1046/j.1365-3091.1997.d01-47.x)
27. J. A. Fisher, G. J. Nichols, D. A. Waltham, Unconfined flow deposits in distal sectors of fluvial distributary systems: Examples from the Miocene Luna and Huesca Systems, northern Spain. *Sediment. Geol.* **195**, 55–73 (2007). doi: [10.1016/j.sedgeo.2006.07.005](https://doi.org/10.1016/j.sedgeo.2006.07.005)
28. D. T. Vaniman *et al.*, Mineralogy of a mudstone at Yellowknife Bay, Gale crater, Mars. *Science* **343**, 1243480 (2014).
29. P. E. Potter, J. B. Maynard, P. Depetris, *Mud and Mudstones* (Springer, Berlin, 2005).
30. P. B. Attewell, I. W. Farmer, *Principles of Engineering Geology* (Chapman and Hall, London, New York, 1976).
31. Supplementary materials are available on Science Online.
32. D. Winston, Fluvial Systems of the Precambrian Belt Supergroup, Montana and Idaho, U.S.A. *Fluvial Sedimentology Memoir* **5**, 343 (1977).
33. D. S. McCormick, J. P. Grotzinger, Distinction of marine from alluvial Facies in the Paleoproterozoic (1.9 Ga) burnside formation, Kilohigok basin, N.W.T., Canada. *J. Sediment. Petrol.* **63**, 398–419 (1993).
34. A. S. Yen *et al.*, An integrated view of the chemistry and mineralogy of martian soils. *Nature* **436**, 49–54 (2005). doi: [10.1038/nature03637](https://doi.org/10.1038/nature03637); pmid: [16001059](https://pubmed.ncbi.nlm.nih.gov/16001059/)
35. P. R. Christensen, Regional dust deposits on Mars: Physical properties, age, and history. *J. Geophys. Res. Solid Earth* **91**, 3533–3545 (1986). doi: [10.1029/JB091iB03p03533](https://doi.org/10.1029/JB091iB03p03533)
36. N. T. Bridges, D. R. Muhs, in *Sedimentary Geology of Mars* (SEPM Special Publication, Tulsa, OK, 2012), vol. 102, pp. 169–182.
37. N. Mangold, V. Ansan, P. Masson, C. Vincendon, Estimate of aeolian dust thickness in Arabia Terra, Mars: Implications of a thick mantle (>20 m) for hydrogen detection. *Geomorphol.: Relief, Processes, Environ.* **12**, 2009, 23–32 (2009).
38. P. M. Sadler, Sediment accumulation rates and the completeness of stratigraphic sections. *J. Geol.* **89**, 569–584 (1981). doi: [10.1086/628623](https://doi.org/10.1086/628623)
39. A. M. Sarna-Wojcicki, S. Shipley, R. B. Waitt, D. Dzurisin, S. H. Wood, in *The 1980 Eruptions of Mount St. Helens, Washington*, P. W. Lipman, D. R. Mullineaux, Eds. (U.S. Geological Survey Professional Paper, Reston, VA, 1981), vol. 1250, pp. 577–600.
40. S. M. McLennan *et al.*, Provenance and diagenesis of the evaporite-bearing Burns formation, Meridiani Planum, Mars. *Earth Planet. Sci. Lett.* **240**, 95–121 (2005). doi: [10.1016/j.epsl.2005.09.041](https://doi.org/10.1016/j.epsl.2005.09.041)
41. P. Fralick, J. P. Grotzinger, L. Edgar, in *Sedimentary Geology of Mars*, J. P. Grotzinger, R. E. Milliken, Eds. (SEPM Special Publication, Tulsa, OK, 2012), vol. 102.
42. J. D. Kim, N. Yee, V. Nanda, P. G. Falkowski, Anoxic photochemical oxidation of siderite generates molecular hydrogen and iron oxides. *Proc. Natl. Acad. Sci. U.S.A.* **110**, 10073–10077 (2013). doi: [10.1073/pnas.1308958110](https://doi.org/10.1073/pnas.1308958110); pmid: [23733945](https://pubmed.ncbi.nlm.nih.gov/23733945/)
43. G. Furniss, J. F. Rittel, D. Winston, Gas bubble and expansion crack origin of “molar-tooth” calcite structures in the Middle Proterozoic Belt Supergroup, western Montana. *J. Sediment. Res.* **68**, 104–114 (1998). doi: [10.2110/jsr.68.104](https://doi.org/10.2110/jsr.68.104)
44. The term “raised ridges” may seem redundant, but the designation “raised” is meant to denote the substantial height of the ridges compared to their width.
45. P. S. Plummer, V. A. Gostin, Shrinkage cracks: Desiccation or syneresis? *J. Sediment. Res.* **51**, 1147–1156 (1981).
46. B. R. Pratt, Syneresis cracks: Subaqueous shrinkage in argillaceous sediments caused by earthquake-induced dewatering. *Sediment. Geol.* **117**, 1–10 (1998). doi: [10.1016/S0037-0738\(98\)00023-2](https://doi.org/10.1016/S0037-0738(98)00023-2)
47. M. D. Pollock, L. C. Kah, J. K. Bartley, Morphology of molar-tooth structures in Precambrian carbonates: Influence of substrate rheology and implications for genesis. *J. Sediment. Res.* **76**, 310–323 (2006). doi: [10.2110/jsr.2006.021](https://doi.org/10.2110/jsr.2006.021)
48. A. Hurst, J. A. Cartwright, D. Duranti, in *Subsurface Sediment Mobilisation*, R. R. H. P. Van Rensbergen, A. J. Maltman, C. K. Morley, Ed. (Geological Society of London Special Publication, London, 2003), vol. 216, pp. 123–137.
49. I. A. Kane, Development and flow structures of sand injectites: The Hind Sandstone Member injectite complex, Carboniferous, UK. *Mar. Pet. Geol.* **27**, 1200–1215 (2010). doi: [10.1016/j.marpetgeo.2010.02.009](https://doi.org/10.1016/j.marpetgeo.2010.02.009)
50. M. Huuse, J. Cartwright, A. Hurst, N. Steinsland, in *Sand Injectites: Implications for Hydrocarbon Exploration and Production*, A. Hurst, J. Cartwright, Eds. (American Association of Petroleum Geologists Memoir, Tulsa, OK, 2007), vol. 87.
51. J. W. Cosgrove, Hydraulic fracturing during the formation and deformation of a basin: A factor in the dewatering of low-permeability sediments. *AAPG Bull.* **85**, 737–748 (2001).
52. D. W. Ming *et al.*, Volatile and organic compositions of sedimentary rocks in Yellowknife Bay, Gale crater, Mars. *Science* **343**, 1245267 (2014).
53. J. D. Collinson, Sedimentology of unconformities within a fluvio-lacustrine sequence: Middle Proterozoic of Eastern North Greenland. *Sediment. Geol.* **34**, 145–166 (1983). doi: [10.1016/0037-0738\(83\)90084-2](https://doi.org/10.1016/0037-0738(83)90084-2)
54. L. B. Aspler, J. R. Chiarenzelli, B. L. Cousens, Fluvial, lacustrine and volcanic sedimentation in the Angikuni sub-basin, and initiation of ~1.84–1.79 Ga Baker Lake Basin, western Churchill Province, Nunavut, Canada. *Precambrian Res.* **129**, 225–250 (2004). doi: [10.1016/j.precamres.2003.10.004](https://doi.org/10.1016/j.precamres.2003.10.004)
55. H. H. Kieffer, B. M. Jakosky, C. Snyder, M. Matthews, *Mars*, H. H. Kieffer, B. M. Jakosky, C. Snyder, M. Matthews, Eds. (Univ. of Arizona Press, Tucson, AZ, 1992).
56. J. F. Bell III, *The Martian Surface: Composition, Mineralogy, and Physical Properties*, J. F. Bell III, Ed. (Cambridge Univ. Press, New York, 2008).
57. J. C. Andrews-Hanna, K. W. Lewis, Early Mars hydrology: 2. Hydrological evolution in the Noachian and Hesperian epochs. *J. Geophys. Res. Planets* **116**, E02007 (2011). doi: [10.1029/2010JE003709](https://doi.org/10.1029/2010JE003709)
58. C. R. Woese, G. E. Fox, Phylogenetic structure of the prokaryotic domain: The primary kingdoms. *Proc. Natl. Acad. Sci. U.S.A.* **74**, 5088–5090 (1977). doi: [10.1073/pnas.74.11.5088](https://doi.org/10.1073/pnas.74.11.5088); pmid: [270744](https://pubmed.ncbi.nlm.nih.gov/270744/)
59. E. I. Friedmann, Endolithic microorganisms in the antarctic cold desert. *Science* **215**, 1045–1053 (1982). doi: [10.1126/science.215.4536.1045](https://doi.org/10.1126/science.215.4536.1045); pmid: [17771821](https://pubmed.ncbi.nlm.nih.gov/17771821/)
60. K. O. Stetter, Extremophiles and their adaptation to hot environments. *FEBS Lett.* **452**, 22–25 (1999). doi: [10.1016/S0014-5793\(99\)00663-8](https://doi.org/10.1016/S0014-5793(99)00663-8); pmid: [10376671](https://pubmed.ncbi.nlm.nih.gov/10376671/)
61. M. Rossi *et al.*, Extremophiles 2002. *J. Bacteriol.* **185**, 3683–3689 (2003). doi: [10.1128/JB.185.13.3683-3689.2003](https://doi.org/10.1128/JB.185.13.3683-3689.2003); pmid: [12813059](https://pubmed.ncbi.nlm.nih.gov/12813059/)
62. K. H. Nealson, Sediment bacteria: Who's there, what are they doing, and what's new? *Annu. Rev. Earth Planet. Sci.* **25**, 403–434 (1997). doi: [10.1146/annurev.earth.25.1.403](https://doi.org/10.1146/annurev.earth.25.1.403); pmid: [11540735](https://pubmed.ncbi.nlm.nih.gov/11540735/)
63. H. G. Schlegel, *General Microbiology* (Cambridge Univ. Press, Cambridge, ed. 7, 1993).
64. G. Gottschalk, *Microbial Metabolism* (Springer, New York, 1994).
65. R. J. Parkes *et al.*, Deep sub-seafloor prokaryotes stimulated at interfaces over geological time. *Nature* **436**, 390–394 (2005). doi: [10.1038/nature03796](https://doi.org/10.1038/nature03796); pmid: [16034418](https://pubmed.ncbi.nlm.nih.gov/16034418/)
66. K. H. Nealson, P. G. Conrad, Life: past, present and future. *Philos. Trans. R. Soc. London Ser. B* **354**, 1923–1939 (1999). pmid: [10670014](https://pubmed.ncbi.nlm.nih.gov/10670014/)
67. D. Z. Sousa *et al.*, Activity and viability of methanogens in anaerobic digestion of unsaturated and saturated long-chain fatty acids. *Appl. Environ. Microbiol.* **79**, 4239–4245 (2013). doi: [10.1128/AEM.00035-13](https://doi.org/10.1128/AEM.00035-13); pmid: [23645196](https://pubmed.ncbi.nlm.nih.gov/23645196/)
68. M. S. Milman-Barris *et al.*, Zoning of phosphorous in igneous olivine. *Contrib. Mineral. Petrol.* **155**, 739–765 (2008). doi: [10.1007/s00410-007-0268-7](https://doi.org/10.1007/s00410-007-0268-7)
69. M. A. Schoonen, Y. Xu, Nitrogen reduction under hydrothermal vent conditions: Implications for the prebiotic synthesis of C-H-O-N compounds. *Astrobiology* **1**, 133–142 (2001).
70. D. P. Summers, R. C. B. Basa, B. Khare, D. Rodoni, Abiotic nitrogen fixation on terrestrial planets: Reduction of NO to ammonia by FeS. *Astrobiology* **12**, 107–114 (2012). doi: [10.1089/ast.2011.0646](https://doi.org/10.1089/ast.2011.0646); pmid: [22283408](https://pubmed.ncbi.nlm.nih.gov/22283408/)
71. V. I. Oyama, B. J. Berdahl, G. C. Carle, Preliminary findings of the Viking gas exchange experiment and a model for martian surface chemistry. *Nature* **265**, 110–114 (1977). doi: [10.1038/265110a0](https://doi.org/10.1038/265110a0)
72. H. P. Klein, The Viking Biological Investigation, General aspects. *J. Geophys. Res.* **82**, 4677–4680 (1977). doi: [10.1029/J5082i028p04677](https://doi.org/10.1029/J5082i028p04677)
73. M. H. Hecht *et al.*, Detection of perchlorate and the soluble chemistry of martian soil at the Phoenix lander site. *Science* **325**, 64–67 (2009). pmid: [19574385](https://pubmed.ncbi.nlm.nih.gov/19574385/)
74. S. W. Squyres, A. H. Knoll, Sedimentary rocks and Meridiani Planum: Origin, diagenesis, and implications for life of Mars. *Earth Planet. Sci. Lett.* **240**, 1–10 (2005). doi: [10.1016/j.epsl.2005.09.038](https://doi.org/10.1016/j.epsl.2005.09.038)
75. L. A. Leshin *et al.*, Volatile, isotope, and organic analysis of martian fines with the Mars Curiosity rover. *Science* **341**, 1238937 (2013). doi: [10.1126/science.1238937](https://doi.org/10.1126/science.1238937); pmid: [24072926](https://pubmed.ncbi.nlm.nih.gov/24072926/)
76. R. E. Milliken *et al.*, Opaline silica in young deposits on Mars. *Geology* **36**, 847–850 (2008). doi: [10.1130/G24967A.1](https://doi.org/10.1130/G24967A.1)
77. R. V. Morris *et al.*, Mössbauer mineralogy of rock, soil, and dust at Gusev crater, Mars: Spirit's journey through weakly altered olivine basalt on the plains and pervasively altered basalt in the Columbia Hills. *J. Geophys. Res. Planets* **111**, E02513 (2006). doi: [10.1029/2005JE002584](https://doi.org/10.1029/2005JE002584)
78. R. V. Morris *et al.*, Mossbauer mineralogy of rock, soil, and dust at Meridiani Planum, Mars: Opportunity's journey across sulfate-rich outcrop, basaltic sand and dust, and hematite lag deposits. *J. Geophys. Res.* **111**, E12515 (2006).
79. J. F. Bell 3rd *et al.*, Pancam multispectral imaging results from the Opportunity Rover at Meridiani Planum. *Science* **306**, 1703–1709 (2004). doi: [10.1126/science.1105245](https://doi.org/10.1126/science.1105245); pmid: [15576603](https://pubmed.ncbi.nlm.nih.gov/15576603/)
80. R. M. Cornell, U. Schwertmann, *The Iron Oxides: Structure, Properties, Reactions, Occurrence and Uses* (Wiley-VCH, Weinheim, Germany, ed. 2, 2003).
81. G. N. Schrauzer, T. D. Guth, Hydrogen evolving systems. 1. The formation of molecular hydrogen from aqueous suspensions of iron(II) hydroxide and reactions with reducible substrates, including molecular nitrogen. *J. Am. Chem. Soc.* **98**, 3508–3513 (1976). doi: [10.1021/ja00428a019](https://doi.org/10.1021/ja00428a019)
82. W. D. Grant, Life at low water activity. *Philos. Trans. R. Soc. London Ser. B* **359**, 1249–1267 (2004). doi: [10.1098/rstb.2004.1502](https://doi.org/10.1098/rstb.2004.1502); pmid: [15306380](https://pubmed.ncbi.nlm.nih.gov/15306380/)
83. A. H. Knoll, J. Grotzinger, Water on Mars and the prospect of martian life. *Elements* **2**, 169–173 (2006). doi: [10.2113/gselements.2.3.169](https://doi.org/10.2113/gselements.2.3.169)
84. J. P. Williams, J. E. Hallsworth, Limits of life in hostile environments: No barriers to biosphere function? *Environ. Microbiol.* **11**, 3292–3308 (2009). doi: [10.1111/j.1462-2920.2009.02079.x](https://doi.org/10.1111/j.1462-2920.2009.02079.x); pmid: [19840102](https://pubmed.ncbi.nlm.nih.gov/19840102/)
85. N. J. Tosca, A. H. Knoll, S. M. McLennan, Water activity and the challenge for life on early Mars. *Science* **320**, 1204–1207 (2008). doi: [10.1126/science.1155432](https://doi.org/10.1126/science.1155432); pmid: [18511686](https://pubmed.ncbi.nlm.nih.gov/18511686/)
86. S. Fendrihan *et al.*, Spherical particles of halophilic archaea correlate with exposure to low water activity—implications for microbial survival in fluid inclusions of ancient halite. *Geobiology* **10**, 424–433 (2012). doi: [10.1111/j.1472-4669.2012.00337.x](https://doi.org/10.1111/j.1472-4669.2012.00337.x); pmid: [22804926](https://pubmed.ncbi.nlm.nih.gov/22804926/)
87. C. Demergasso *et al.*, Distribution of prokaryotic genetic diversity in athalassohaline lakes of the Atacama Desert, Northern Chile. *FEMS Microbiol. Ecol.* **48**, 57–69 (2004). doi: [10.1016/j.femsec.2003.12.013](https://doi.org/10.1016/j.femsec.2003.12.013); pmid: [19712431](https://pubmed.ncbi.nlm.nih.gov/19712431/)

88. A. Kish *et al.*, Salt shield: Intracellular salts provide cellular protection against ionizing radiation in the halophilic archaeon, *Halobacterium salinarum* NRC-1. *Environ. Microbiol.* **11**, 1066–1078 (2009). doi: [10.1111/j.1462-2920.2008.01828.x](https://doi.org/10.1111/j.1462-2920.2008.01828.x); pmid: [19452594](https://pubmed.ncbi.nlm.nih.gov/19452594/)
89. L. R. Dartnell, L. Desorgher, J. M. Ward, A. J. Coates, Modelling the surface and subsurface martian radiation environment: Implications for astrobiology. *Geophys. Res. Lett.* **34**, L02207 (2007). doi: [10.1029/2006GL027494](https://doi.org/10.1029/2006GL027494)
90. A. I. López-Archilla, I. Marin, R. Amils, Microbial community composition and ecology of an acidic aquatic environment: The Tinto River, Spain. *Microb. Ecol.* **41**, 20–35 (2001). pmid: [11252161](https://pubmed.ncbi.nlm.nih.gov/11252161/)
91. J.-P. Bibring *et al.*, Global mineralogical and aqueous mars history derived from OMEGA/Mars Express data. *Science* **312**, 400–404 (2006). doi: [10.1126/science.1122659](https://doi.org/10.1126/science.1122659); pmid: [16627738](https://pubmed.ncbi.nlm.nih.gov/16627738/)
92. T. F. Bristow, R. E. Milliken, Terrestrial perspective on authigenic clay mineral production in ancient martian lakes. *Clays Clay Miner.* **59**, 339–358 (2011). doi: [10.1346/CCMN.2011.0590401](https://doi.org/10.1346/CCMN.2011.0590401)
93. S. L. Murchie *et al.*, A synthesis of martian aqueous mineralogy after 1 Mars year of observations from the Mars Reconnaissance Orbiter. *J. Geophys. Res. Planets* **114**, E00D06 (2009). doi: [10.1029/2009JE003342](https://doi.org/10.1029/2009JE003342)
94. A. G. Fairén *et al.*, Noachian and more recent phyllosilicates in impact craters on Mars. *Proc. Natl. Acad. Sci. U.S.A.* **107**, 12095–12100 (2010). doi: [10.1073/pnas.1002889107](https://doi.org/10.1073/pnas.1002889107); pmid: [20616087](https://pubmed.ncbi.nlm.nih.gov/20616087/)
95. H. L. James, A. F. Trendall, Banded iron formation: Distribution in time and paleoenvironmental significance, *Mineral Deposits and the Evolution of the Biosphere: Dahlem Workshop Report*, H. D. Holland, A. M. Schidlowski, Eds. (Springer, Berlin, Heidelberg, New York, 1982), vol. 3.
96. A. Bekker *et al.*, Iron formation: The sedimentary product of a complex interplay among mantle, tectonic, oceanic, and biospheric processes. *Econ. Geol.* **105**, 467–508 (2010). doi: [10.2113/gsecongeo.105.3.467](https://doi.org/10.2113/gsecongeo.105.3.467)
97. J. P. Grotzinger, in *Controls on Carbonate Platforms and Basin Development*, P. D. Crevello, J. L. Wilson, J. F. Sarg, J. F. Read, Eds. (SEPM Special Publication, Tulsa, OK, 1989), vol. 44, pp. 79–106.
98. J. P. Grotzinger, N. P. James, in *Carbonate Sedimentation and Diagenesis in the Evolving Precambrian World*, J. P. Grotzinger, N. P. James, Eds. (SEPM Special Publication, Tulsa, OK, 2000), vol. 67, pp. 3–20.

Acknowledgments: We are indebted to the MSL Project engineering and management teams for their exceptionally skilled and diligent efforts in making the mission as effective as possible and enhancing science operations. We are also grateful to all those MSL Science Team members who participated in tactical and strategic operations. Without the support of both the engineering and science teams, the data presented here could not have been collected. Some of this research was carried out at the Jet Propulsion Laboratory, California Institute of Technology, under a contract with NASA. Data presented in this paper are archived in the Planetary Data System (pds.nasa.gov).

Supplementary Materials

www.sciencemag.org/content/343/6169/1242777/suppl/DC1
Supplementary Text
Figs. S1 to S4
Tables S1 and S2
References (99, 100)
MSL Science Team Author List

4 July 2013; accepted 6 November 2013
Published online 9 December 2013;
[10.1126/science.1242777](https://doi.org/10.1126/science.1242777)



Supplementary Materials for

A Habitable Fluvio-Lacustrine Environment at Yellowknife Bay, Gale Crater, Mars

J. P. Grotzinger,* D. Y. Sumner, L. C. Kah, K. Stack, S. Gupta, L. Edgar, D. Rubin, K. Lewis, J. Schieber, N. Mangold, R. Milliken, P. G. Conrad, D. DesMarais, J. Farmer, K. Siebach, F. Calef III, J. Hurowitz, S. M. McLennan, D. Ming, D. Vaniman, J. Crisp, A. Vasavada, K. S. Edgett, M. Malin, D. Blake, R. Gellert, P. Mahaffy, R. C. Wiens, S. Maurice, J. A. Grant, S. Wilson, R. C. Anderson, L. Beegle, R. Arvidson, B. Hallet, R. S. Sletten, M. Rice, J. Bell III, J. Griffes, B. Ehlmann, R. B. Anderson, T. F. Bristow, W. E. Dietrich, G. Dromart, J. Eigenbrode, A. Fraeman, C. Hardgrove, K. Herkenhoff, L. Jandura, G. Kocurek, S. Lee, L. A. Leshin, R. Leveille, D. Limonadi, J. Maki, S. McCloskey, M. Meyer, M. Minitti, H. Newsom, D. Oehler, A. Okon, M. Palucis, T. Parker, S. Rowland, M. Schmidt, S. Squyres, A. Steele, E. Stolper, R. Summons, A. Treiman, R. Williams, A. Yingst, MSL Science Team

*Corresponding author. E-mail: grotz@gps.caltech.edu

Published 9 December 2013 on *Science Express*

DOI: 10.1126/science.1242777

This PDF file includes:

Supplementary Text
Figs. S1 to S4
Tables S1 and S2
MSL Science Team Author List
Full Reference List

Supplementary Text

Drill testing of rock hardness

Data collected during terrestrial drill testing on relevant analog samples provide constraints on the physical properties of the rocks drilled at the John Klein and Cumberland drill sites on Mars. The first two analogs consisted of a feldspathic sandstone and a mud/siltstone collected from the Pliocene age Ridge Basin Group, north of the Golden State Highway Old Road, below the Pyramid Lake Dam north of Castaic, CA. These rocks are estimated to be 5-10 million years old, and buried to depths of several kilometers. The third was a pure kaolinite, obtained from the Standard Industrial Mineral mine in Bishop, CA, and the fourth was a large sample of anhydrite-gypsum collected from the Fish Creek Gypsum deposit located in the Salton Trough, south west of the Salton Sea, CA and owned by U. S. Gypsum Mine company.

Drill testing was performed in a drill hardware testbed at the NASA Jet Propulsion Laboratory that houses a flight duplicate MSL drill assembly (100). The drill is mounted to a stage that holds the drill system in place as the rotary percussion drill bit and surrounding sample acquisition tube are fed into rock samples using flight-like drilling algorithms. The drill and its supporting hardware are contained within a vacuum chamber and tests were performed under Mars ambient atmospheric pressure (~10mbar) during drill testing. In an attempt to more closely replicate the likely hydration state of rocks on Mars, all analogue rock samples were baked in an oven at 110° C for a period not less than 2 days prior to drilling in order to drive off adsorbed and loosely bound water to better resemble conditions expected to be present on target rocks on Mars.

While the *Curiosity* rover does not possess a dedicated instrument for direct determination of rock hardness, a hardness test procedure that uses the drill hardware for *in situ* determination of rock hardness and cohesiveness has been developed. MSL “Hardness tests” are performed by measuring the depth of penetration of MSL’s spade-shaped drill bit tip after a number of discrete motions that result in drill-rock interaction with a non-rotating drill bit. These include depth measurements after the drill bit is loaded against the rock surface with a 130N force, after the drill is “tapped” against the rock with a single tap of the percussion actuator, and six subsequent depth of penetration measurements after the drill bit is advanced (without rotation) into the rock at increasing levels of percussion energy. The 6 percuss levels increase in energy with level 1-6 having 0.05 J per blow, 0.20, 0.31, 0.45, 0.61, to 0.81 J per blow, respectively. The results of these hardness tests provide insight into the relative resistance to penetration of various analogue rock samples for comparison to data collected during drilling operations on Mars. [Figure S3](#) plots our hardness test results for the four analog samples discussed above along with hardness test results from the John Klein and Cumberland drill samples collected by the *Curiosity* rover on Mars. Note that hardness tests were performed at two locations on the John Klein rock face; one for a mini-drill hole (~20 mm total penetration depth) and one for the full-depth drill hole, from which sample was

collected and delivered to *Curiosity's* onboard analytical instruments. For the Cumberland hardness test, the drill bit tip appears to have advanced deeper into the rock for a given step in the test procedure. In fact, the Cumberland hardness test was terminated at Step 8 because a depth >0.8mm was achieved. Altogether these observations suggest that the Cumberland rock target was less resistant to penetration (i.e., softer) than the John Klein target.

A somewhat different picture emerges from Rate of Penetration (ROP) data, which measures the speed at which the drill bit and its surrounding sample acquisition tube are fed into a rock. While this data is a complex function of the intrinsic rock hardness, the cohesive strength of rock, and the engineering parameters of the drill system, it is interesting to compare data from our analogue samples to ROP data collected on Mars. ROP data collection occurs during rotary-percussive drilling, after the hardness test is performed and after a series of rotary-percussion “hole start” motions are performed that effectively create a shallow pilot hole to keep the drill bit from walking across the rock face during the drilling operation. As shown in [Figure S4](#), the John Klein and Cumberland ROP data fall in between the feldspathic sandstone and kaolinite test data, and appear most similar to data collected on the Ridge group mud/siltstone and the anhydrite-gypsum from the Salton Sea. It is important to note that for *in situ* drilling operations on Mars, the percussion level was intentionally limited to a level lower than the drill system’s maximum percussion level, owing to hardware safety concerns for first time drilling operations. These limits were not applied during analogue drill testing on Earth. Therefore, it is possible that a faster ROP could have been realized during John Klein drilling operations had the percussion level been allowed to advance to higher levels. Therefore, the ROP data for John Klein should probably be considered a lower limit on the ROP for this *in situ* drilling operation.

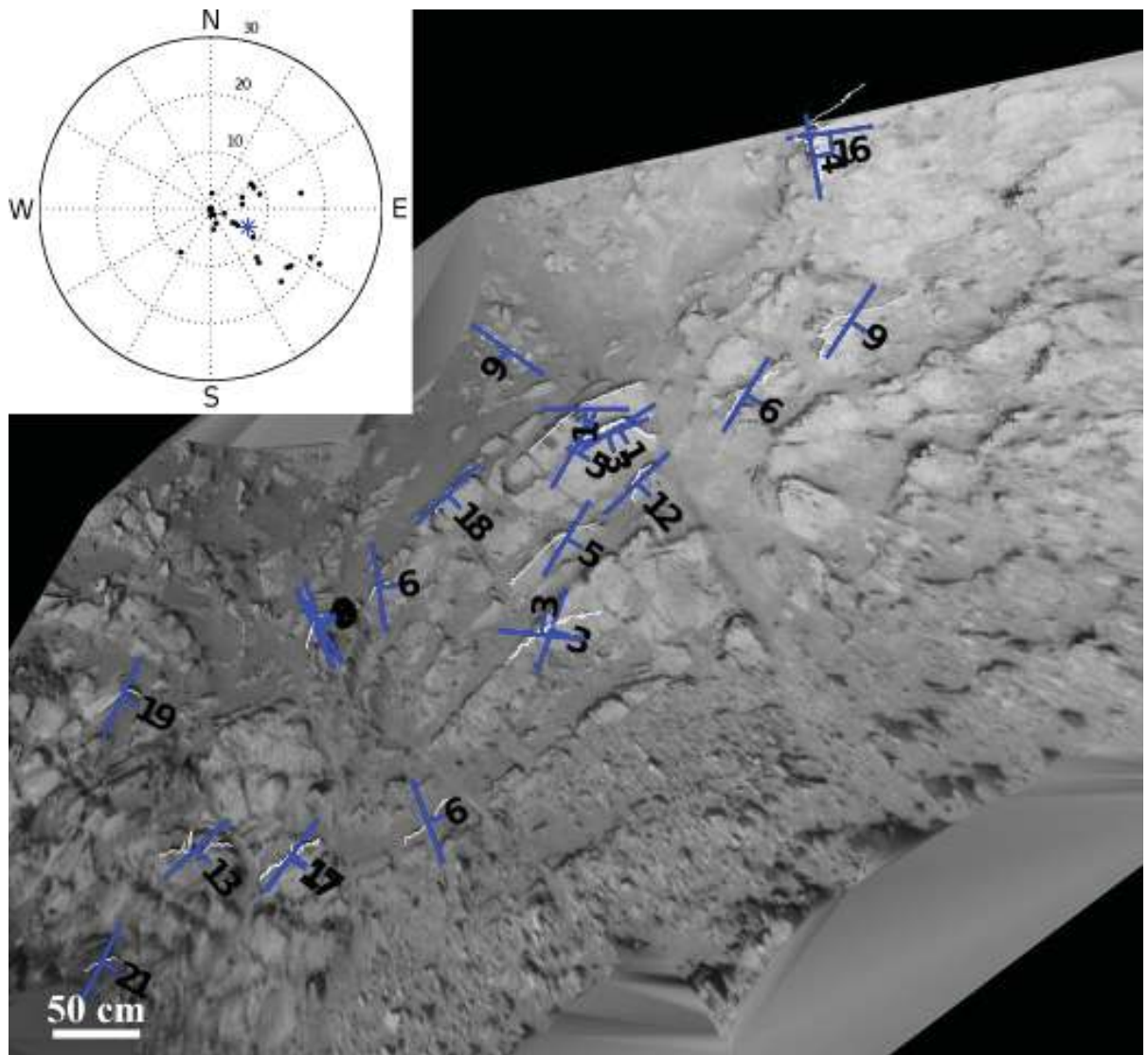


Fig. S1.

Three-dimensional bedding orientation measurements were extracted from Sol 120 Navcam images of the outcrop, which have been vertically projected in this map.

Measurements were made via orthogonal regression, via the method of Lewis et al. (99). Dip marks denote individual measurements of bedding traces, shown in white.

The polar plot shows each measurement that satisfied our error constraints ($N=25$), along with the mean bedding attitude in blue. In general, cross-strata at Shaler dip to the southeast, at a mean dip of 7 degrees, oriented 64 degrees south of east. Although individual measurements show some scatter in dip azimuth, nearly all beds are oriented within 90 degrees of the inferred mean flow direction, consistent with fluvial transport and associated bedform geometries. See Supplementary Text, below, for image IDs.



Fig. S2

Texture of the “snake” as seen by MAHLI on Sol 149 (6 Jan 2013). Note uniformly fine grain size and presence of pits that may reflect void spaces and, in some cases, erosion of softer components that may represent intraclasts. Image ID: 0149MH0000750010101287C00.

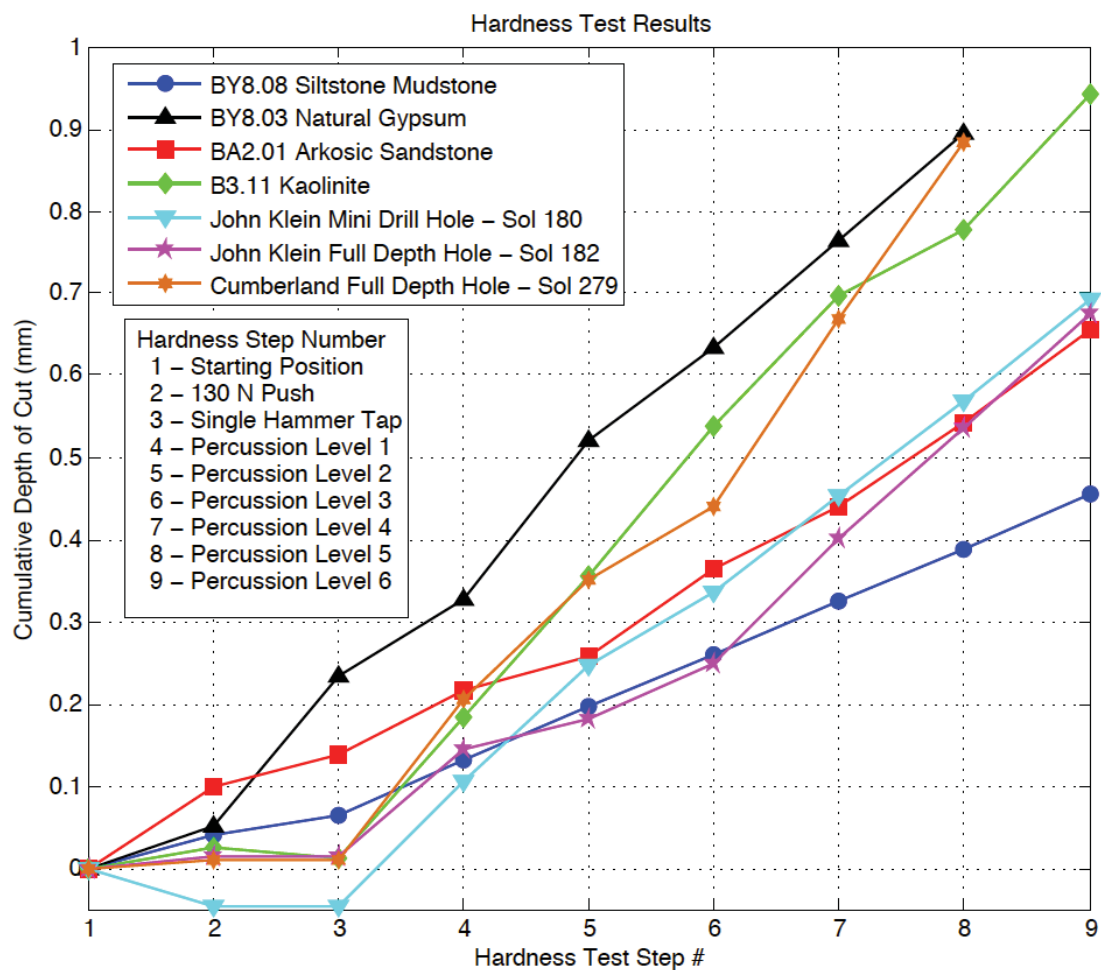


Fig. S3

Hardness test results for analogue samples plotted together with the John Klein and Cumberland data on a graph of cumulative depth of cut (mm) versus Hardness test step #.

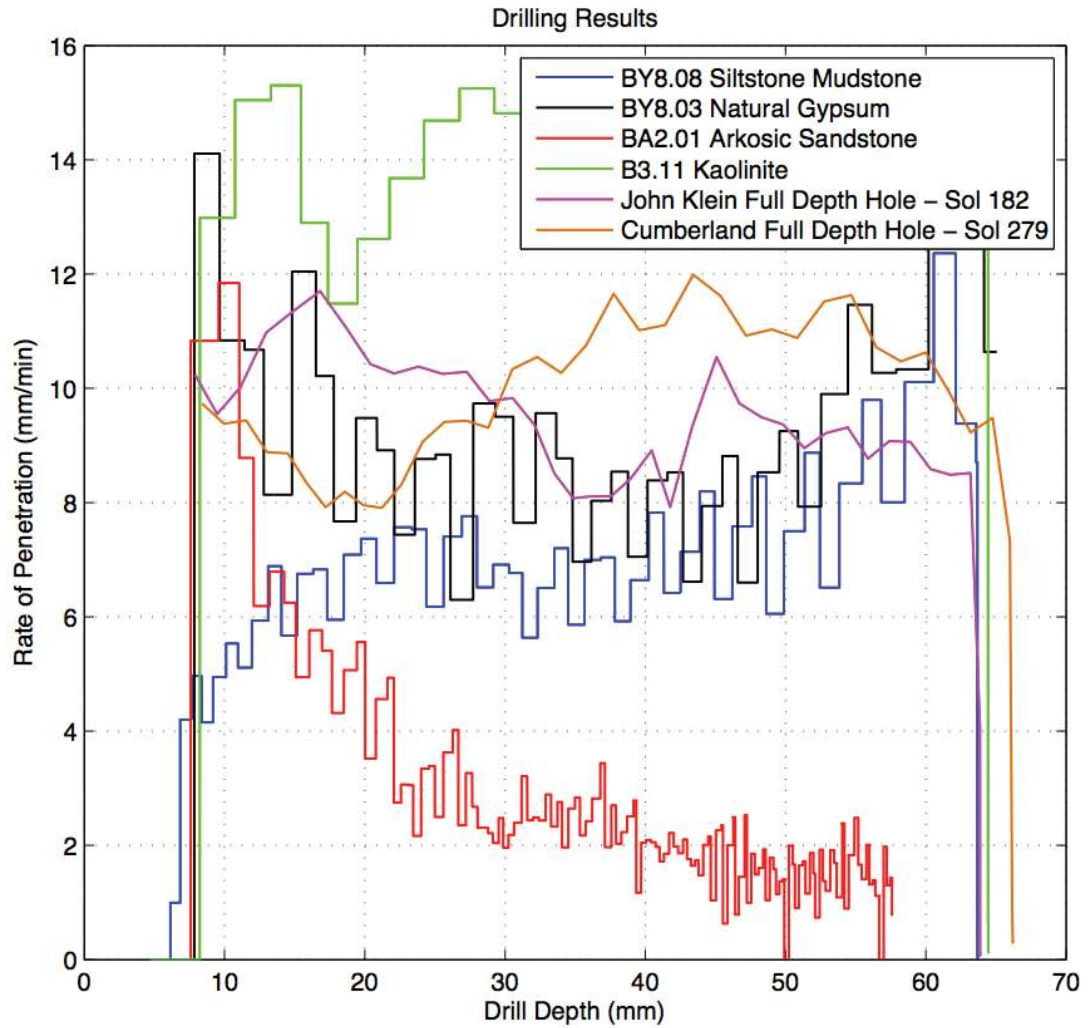


Fig. S4

Rate of Penetration (ROP) results for analog samples plotted together with the John Klein and Cumberland data on a graph of ROP (mm/min) against drill depth (mm).

Table S1.
Stratigraphic Nomenclature

Name	Unit Description	Exposure and Contacts
Glenelg member	<p>Intermixed facies, including those represented by the following outcrops:</p> <p>1) Bathurst Inlet outcrop</p> <ul style="list-style-type: none"> • Centimeter- to decimeter-thick beds • Grain size not resolvable with MAHLI; likely fine sand, silt, or clay-sized. • Basaltic composition with a significant enrichment in alkaline elements. <p>2) Shaler outcrop</p> <ul style="list-style-type: none"> • Centimeter- to decimeter-thick beds with variable resistance to erosion • Grain size varies from finer than fine sand up to granule, sorted into discrete layers. • Diverse sedimentary structures, including planar lamination, low angle truncations, and trough cross stratification; rare fine-grained layers have vertical cracks filled with more resistant sediment. • Downward-tapering sediment-filled cracks interpreted to have formed by desiccation. • Basaltic composition <p>3) Point Lake outcrop</p> <ul style="list-style-type: none"> • 20-50 cm-thick layers of unknown origin • Meter-long fractures define meter-scale polygons; weathered surfaces are rough. • cm-scale vuggy porosity; rare bright, sulfate-filled fractures • Basaltic composition <p>4) Rocknest outcrop</p> <ul style="list-style-type: none"> • Decimeter-sized rocks of unknown origin, lacking stratigraphic context • Some rocks show faint planar lamination to low angle cross 	<ul style="list-style-type: none"> • Caps Yellowknife Bay formation stratigraphy. The “cratered surface” map unit, to the southeast of Yellowknife Bay, may represent the expression of the upper surface of a resistant bed near the top of the formation, or the top of the formation itself. • Upper beds (e.g. Bathurst Inlet outcrop) weather resistantly, and typically overlie slopes covered with scree, which may be underlain by facies similar to those in the Shaler outcrop. • Facies represented by the Point Lake and Rocknest outcrops are exposed as discontinuous layers and a ≤ 200 m² platform of resistant beds. • Lower contact: sharp with the underlying Gillespie Lake member. • Upper contact: not exposed, or consists of the geomorphic cratered surface.

	<p>lamination or massive; lens-shaped voids interpreted as desiccation cracks.</p> <ul style="list-style-type: none"> • Some rocks are texturally similar to Point Lake outcrop with rough weathered surfaces. • Basaltic composition with significant enrichment in alkaline elements. 	
Gillespie Lake member	<ul style="list-style-type: none"> • Decimeter-thick beds of uniformly smooth weathering sandstone; • Meter-long fractures define meter-scale polygons; • Medium to very coarse sand with diverse grain colors and some translucent grains at base of the unit • Hints of small-scale cross stratification including possible ripple crests on bedding planes. • Rare millimeter-scale bright, sulfate-filled fractures. • Basaltic composition 	<ul style="list-style-type: none"> • Well exposed and laterally continuous regionally. • Lower contact: sharp with centimeters of relief; lowermost bed always caps a small scarp, often overhanging. Contact is nearly horizontal for 100's m to the east and northeast. • Upper contact: sharp and well exposed under the Point Lake outcrop, but poorly exposed elsewhere.
Sheepbed member	<ul style="list-style-type: none"> • Decimeter-thick beds with variable resistance to erosion • Abundant meter-long fractures define meter-scale polygons; fractures are centimeters to decimeters wide and sand-filled. • Dominant grain size in upper 50 cm is below the resolution of MAHLI, likely silt to clay-sized. • Variable concentrations of bright cement-filled fractures, hairline fractures, and millimeter-scale bright spherical "hollow nodules", all filled with calcium sulfate. • Dark, raised, intersecting ridges frequently rise above centimeter-scale polygons in meter-diameter patches. Ridges dip in various directions, have a composition similar to that of the host rocks, and show a small magnesium enrichment. • Meter-scale patches contain high concentrations of millimeter-scale nodules, interpreted as concretions. Concretions have the same color as raised ridges. Hollow nodules are also present, as well as some 	<ul style="list-style-type: none"> • The upper 50 cm of this unit weathers recessively and is well exposed to covered in loose sand. • Lower contact: not defined • Upper contact: sharp with centimeters of erosional relief, often overhanging. Regionally mappable due to topographic expression.

	filled with calcium sulfate. • Basaltic composition with ~20% smectite, ~50% igneous minerals; and ~30% X-ray amorphous material. Elevated magnetite likely authigenic.	
--	--	--

Table S2.

Image Identification Numbers for Mosaics

Figure 3 Image IDs :

0137ML0008180080104153E01_DXXX, 0137ML0008180090104154E01_DXXX,
 0137ML0008180100104155E01_DXXX, 0137ML0008180110104156E01_DXXX,
 0137ML0008180120104157E01_DXXX, 0137ML0008180130104158E01_DXXX,
 0137ML0008180140104159E01_DXXX, 0137ML0008180150104160E01_DXXX,
 0137ML0008180160104161E01_DXXX, 0137ML0008180170104162E01_DXXX,
 0137ML0008180340104179E01_DXXX, 0137ML0008180350104180E01_DXXX,
 0137ML0008180360104181E01_DXXX, 0137ML0008180370104182E01_DXXX,
 0137ML0008180380104183E01_DXXX, 0137ML0008180390104184E01_DXXX,
 0137ML0008180400104185E01_DXXX, 0137ML0008180410104186E01_DXXX,
 0137ML0008180420104187E01_DXXX, 0137ML0008180430104188E01_DXXX,
 0137ML0008180570104202E01_DXXX, 0137ML0008180580104203E01_DXXX,
 0137ML0008180590104204E02_DXXX, 0137ML0008180600104205E01_DXXX,
 0137ML0008180610104206E01_DXXX, 0137ML0008180620104207E01_DXXX,
 0137ML0008180630104208E01_DXXX, 0137ML0008180640104209E01_DXXX,
 0137ML0008180650104210E01_DXXX, 0137ML0008180660104211E01_DXXX,
 0137ML0008180800104225E01_DXXX, 0137ML0008180810104226E01_DXXX,
 0137ML0008180820104227E01_DXXX, 0137ML0008180830104228E02_DXXX,
 0137ML0008180840104229E01_DXXX, 0137ML0008180850104230E01_DXXX,
 0137ML0008180860104231E01_DXXX, 0137ML0008180870104232E01_DXXX,
 0137ML0008180880104233E01_DXXX

Figure 7 Image IDs:

0164MR0008850030201592E01_DXXX, 0164MR0008850050201594E01_DXXX,
 0164MR0008850060201595E01_DXXX, 0164MR0008850070201596E01_DXXX,
 0164MR0008850100201599E01_DXXX, 0164MR0008850110201600E01_DXXX,
 0164MR0008850120201601E01_DXXX, 0164MR0008850130201602E01_DXXX

Figure S1 Image IDs:

NLA_408156277EDR_F0050742NCAM00213M1.IMG,
NLA_408156312EDR_F0050742NCAM00215M1.IMG,
NLA_408156347EDR_F0050742NCAM00215M1.IMG,
NLA_408156382EDR_F0050742NCAM00215M1.IMG

Supplementary Text: Mars Science Laboratory (MSL) Science Team

Aalto University

Osku Kemppinen

Applied Physics Laboratory (APL) at Johns Hopkins University

Nathan Bridges, Jeffrey R. Johnson, Michelle Minitti

Applied Research Associates, Inc. (ARA)

David Cremers

Arizona State University (ASU)

James F. Bell III, Lauren Edgar, Jack Farmer, Austin Godber, Meenakshi Wadhwa,
Danika Wellington

Ashima Research

Ian McEwan, Claire Newman, Mark Richardson

ATOS Origin

Antoine Charpentier, Laurent Peret

Australian National University (ANU)

Penelope King

Bay Area Environmental Research Institute (BAER)

Jennifer Blank

Big Head Endian LLC

Gerald Weigle

Brock University

Marie Schmidt

Brown University

Shuai Li, Ralph Milliken, Kevin Robertson, Vivian Sun

California Institute of Technology (Caltech)

Michael Baker, Christopher Edwards, Bethany Ehlmann, Kenneth Farley, Jennifer Griffes, John Grotzinger, Hayden Miller, Megan Newcombe, Cedric Pilorget, Melissa Rice, Kirsten Siebach, Katie Stack, Edward Stolper

Canadian Space Agency (CSA)

Claude Brunet, Victoria Hipkin, Richard Léveillé, Geneviève Marchand, Pablo Sobrón Sánchez

Capgemini France

Laurent Favot

Carnegie Institution of Washington

George Cody, Andrew Steele

Carnegie Mellon University

Lorenzo Flückiger, David Lees, Ara Nefian

Catholic University of America

Mildred Martin

Centre National de la Recherche Scientifique (CNRS)

Marc Gailhanou, Frances Westall, Guy Israël

Centre National d'Etudes Spatiales (CNES)

Christophe Agard, Julien Baroukh, Christophe Donny, Alain Gaboriaud, Philippe Guillemot, Vivian Lafaille, Eric Lorigny, Alexis Paillet, René Pérez, Muriel Saccoccio, Charles Yana

Centro de Astrobiología (CAB)

Carlos Armiens-Aparicio, Javier Caride Rodríguez, Isaías Carrasco Blázquez, Felipe Gómez Gómez, Javier Gómez-Elvira, Sebastian Hettrich, Alain Lepinette Malvitte, Mercedes Marín Jiménez, Jesús Martínez-Frías, Javier Martín-Soler, F. Javier Martín-Torres, Antonio Molina Jurado, Luis Mora-Sotomayor, Guillermo Muñoz Caro, Sara Navarro López, Verónica Peinado-González, Jorge Pla-García, José Antonio Rodríguez Manfredi, Julio José Romeral-Planelló, Sara Alejandra Sans Fuentes, Eduardo Sebastian Martinez, Josefina Torres Redondo, Roser Urqui-O'Callaghan, María-Paz Zorzano Mier

Chesapeake Energy

Steve Chipera

Commissariat à l'Énergie Atomique et aux Énergies Alternatives (CEA)

Jean-Luc Lacour, Patrick Mauchien, Jean-Baptiste Sirven

Concordia College

Heidi Manning

Cornell University

Alberto Fairén, Alexander Hayes, Jonathan Joseph, Steven Squyres, Robert Sullivan, Peter Thomas

CS Systemes d'Information

Audrey Dupont

Delaware State University

Angela Lundberg, Nouredine Melikechi, Alissa Mezzacappa

Denver Museum of Nature & Science

Julia DeMarines, David Grinspoon

Deutsches Zentrum für Luft- und Raumfahrt (DLR)

Günther Reitz

eINFORMe Inc. (at NASA GSFC)

Benito Prats

Finnish Meteorological Institute

Evgeny Atlaskin, Maria Genzer, Ari-Matti Harri, Harri Haukka, Henrik Kahanpää, Janne Kauhanen, Osku Kemppinen, Mark Paton, Jouni Polkko, Walter Schmidt, Tero Siili

GeoResources

Cécile Fabre

Georgia Institute of Technology

James Wray, Mary Beth Wilhelm

Géosciences Environnement Toulouse (GET)

Franck Poitrasson

Global Science & Technology, Inc.

Kiran Patel

Honeybee Robotics

Stephen Gorevan, Stephen Indyk, Gale Paulsen

Imperial College

Sanjeev Gupta

Indiana University Bloomington

David Bish, Juergen Schieber

Institut d'Astrophysique Spatiale (IAS)

Brigitte Gondet, Yves Langevin

Institut de Chimie des Milieux et Matériaux de Poitiers (IC2MP)

Claude Geffroy

Institut de Recherche en Astrophysique et Planétologie (IRAP), Université de Toulouse

David Baratoux, Gilles Berger, Alain Cros, Claude d'Uston, Olivier Forni, Olivier Gasnault, Jérémie Lasue, Qiu-Mei Lee, Sylvestre Maurice, Pierre-Yves Meslin, Etienne Pallier, Yann Parot, Patrick Pinet, Susanne Schröder, Mike Toplis

Institut des Sciences de la Terre (ISTerre)

Éric Lewin

inXitu

Will Brunner

Jackson State University

Ezat Heydari

Jacobs Technology

Cherie Achilles, Dorothy Oehler, Brad Sutter

Laboratoire Atmosphères, Milieux, Observations Spatiales (LATMOS)

Michel Cabane, David Coscia, Guy Israël, Cyril Szopa

Laboratoire de Géologie de Lyon : Terre, Planète, Environnement (LGL-TPE)

Gilles Dromart

Laboratoire de Minéralogie et Cosmochimie du Muséum (LMCM)

François Robert, Violaine Sautter

Laboratoire de Planétologie et Géodynamique de Nantes (LPGN)

Stéphane Le Mouélic, Nicolas Mangold, Marion Nachon

Laboratoire Génie des Procédés et Matériaux (LGPM)

Arnaud Buch

Laboratoire Interuniversitaire des Systèmes Atmosphériques (LISA)

Fabien Stalport, Patrice Coll, Pascaline François, François Raulin, Samuel Teinturier

Lightstorm Entertainment Inc.

James Cameron

Los Alamos National Lab (LANL)

Sam Clegg, Agnès Cousin, Dorothea DeLapp, Robert Dingler, Ryan Steele Jackson, Stephen Johnstone, Nina Lanza, Cynthia Little, Tony Nelson, Roger C. Wiens, Richard B. Williams

Lunar and Planetary Institute (LPI)

Andrea Jones, Laurel Kirkland, Allan Treiman

Malin Space Science Systems (MSSS)

Burt Baker, Bruce Cantor, Michael Caplinger, Scott Davis, Brian Duston, Kenneth Edgett, Donald Fay, Craig Hardgrove, David Harker, Paul Herrera, Elsa Jensen, Megan R. Kennedy, Gillian Krezoski, Daniel Krysak, Leslie Lipkaman, Michael Malin, Elaina McCartney, Sean McNair, Brian Nixon, Liliya Posiolova, Michael Ravine, Andrew Salamon, Lee Saper, Kevin Stoiber, Kimberley Supulver, Jason Van Beek, Tessa Van Beek, Robert Zimdar

Massachusetts Institute of Technology (MIT)

Katherine Louise French, Karl Iagnemma, Kristen Miller, Roger Summons

Max Planck Institute for Solar System Research

Fred Goesmann, Walter Goetz, Stubbe Hviid

Microtel

Micah Johnson, Matthew Lefavor, Eric Lyness

Mount Holyoke College

Elly Breves, M. Darby Dyar, Caleb Fassett

NASA Ames

David F. Blake, Thomas Bristow, David DesMarais, Laurence Edwards, Robert Haberle, Tori Hoehler, Jeff Hollingsworth, Melinda Kahre, Leslie Keely, Christopher McKay, Mary Beth Wilhelm

NASA Goddard Space Flight Center (GSFC)

Lora Bleacher, William Brinckerhoff, David Choi, Pamela Conrad, Jason P. Dworkin, Jennifer Eigenbrode, Melissa Floyd, Caroline Freissinet, James Garvin, Daniel Glavin, Daniel Harpold, Andrea Jones, Paul Mahaffy, David K. Martin, Amy McAdam, Alexander Pavlov, Eric Raaen, Michael D. Smith, Jennifer Stern, Florence Tan, Melissa Trainer

NASA Headquarters

Michael Meyer, Arik Posner, Mary Voytek

NASA Jet Propulsion Laboratory (JPL)

Robert C. Anderson, Andrew Aubrey, Luther W. Beegle, Alberto Behar, Diana Blaney, David Brinza, Fred Calef, Lance Christensen, Joy A. Crisp, Lauren DeFlores, Bethany Ehlmann, Jason Feldman, Sabrina Feldman, Gregory Flesch, Joel Hurowitz, Insoo Jun, Didier Keymeulen, Justin Maki, Michael Mischna, John Michael Morookian, Timothy Parker, Betina Pavri, Marcel Schoppers, Aaron Sengstacken, John J. Simmonds, Nicole Spanovich, Manuel de la Torre Juarez, Ashwin R. Vasavada, Christopher R. Webster, Albert Yen

NASA Johnson Space Center (JSC)

Paul Douglas Archer, Francis Cucinotta, John H. Jones, Douglas Ming, Richard V. Morris, Paul Niles, Elizabeth Rampe

Nolan Engineering

Thomas Nolan

Oregon State University

Martin Fisk

Piezo Energy Technologies

Leon Radziemski

Planetary Science Institute

Bruce Barraclough, Steve Bender, Daniel Berman, Eldar Noe Dobrea, Robert Tokar, David Vaniman, Rebecca M. E. Williams, Aileen Yingst

Princeton University

Kevin Lewis

Rensselaer Polytechnic Institute (RPI)

Laurie Leshin

Retired

Timothy Cleghorn, Wesley Huntress, Gérard Manhès

Salish Kootenai College

Judy Hudgins, Timothy Olson, Noel Stewart

Search for Extraterrestrial Intelligence Institute (SETI I)

Philippe Sarrazin

Smithsonian Institution

John Grant, Edward Vicenzi, Sharon A. Wilson

Southwest Research Institute (SwRI)

Mark Bullock, Bent Ehresmann, Victoria Hamilton, Donald Hassler, Joseph Peterson, Scot Rafkin, Cary Zeitlin

Space Research Institute

Fedor Fedosov, Dmitry Golovin, Natalya Karpushkina, Alexander Kozyrev, Maxim Litvak, Alexey Malakhov, Igor Mitrofanov, Maxim Mokrousov, Sergey Nikiforov, Vasily Prokhorov, Anton Sanin, Vladislav Tretyakov, Alexey Varenikov, Andrey Vostrukhin, Ruslan Kuzmin

Space Science Institute (SSI)

Benton Clark, Michael Wolff

State University of New York (SUNY) Stony Brook

Scott McLennan

Swiss Space Office

Oliver Botta

TechSource

Darrell Drake

Texas A&M

Keri Bean, Mark Lemmon

The Open University

Susanne P. Schwenzer

United States Geological Survey (USGS) Flagstaff

Ryan B. Anderson, Kenneth Herkenhoff, Ella Mae Lee, Robert Sucharski

Universidad de Alcalá

Miguel Ángel de Pablo Hernández, Juan José Blanco Ávalos, Miguel Ramos

Universities Space Research Association (USRA)

Myung-Hee Kim, Charles Malespin, Ianik Plante

University College London (UCL)

Jan-Peter Muller

University Nacional Autónoma de México (UNAM)

Rafael Navarro-González

University of Alabama

Ryan Ewing

University of Arizona

William Boynton, Robert Downs, Mike Fitzgibbon, Karl Harshman, Shaunna Morrison

University of California Berkeley

William Dietrich, Onno Kortmann, Marisa Palucis

University of California Davis

Dawn Y. Sumner, Amy Williams

University of California San Diego

Günter Lugmair

University of California San Francisco

Michael A. Wilson

University of California Santa Cruz

David Rubin

University of Colorado Boulder

Bruce Jakosky

University of Copenhagen

Tonci Balic-Zunic, Jens Frydenvang, Jaqueline Kløvgaard Jensen, Kjartan Kinch, Asmus Koefoed, Morten Bo Madsen, Susan Louise Svane Stipp

University of Guelph

Nick Boyd, John L. Campbell, Ralf Gellert, Glynis Perrett, Irina Pradler, Scott VanBommel

University of Hawai'i at Manoa

Samantha Jacob, Tobias Owen, Scott Rowland

University of Helsinki

Evgeny Atlaskin, Hannu Savijärvi

University of Kiel

Eckart Boehm, Stephan Böttcher, Sönke Burmeister, Jingnan Guo, Jan Köhler, César Martín García, Reinhold Mueller-Mellin, Robert Wimmer-Schweingruber

University of Leicester

John C. Bridges

University of Maryland

Timothy McConnochie

University of Maryland Baltimore County

Mehdi Benna, Heather Franz

University of Maryland College Park

Hannah Bower, Anna Brunner

University of Massachusetts

Hannah Blau, Thomas Boucher, Marco Carmosino

University of Michigan Ann Arbor

Sushil Atreya, Harvey Elliott, Douglas Halleaux, Nilton Rennó, Michael Wong

University of Minnesota

Robert Pepin

University of New Brunswick

Beverley Elliott, John Spray, Lucy Thompson

University of New Mexico

Suzanne Gordon, Horton Newsom, Ann Ollila, Joshua Williams

University of Queensland

Paulo Vasconcelos

University of Saskatchewan

Jennifer Bentz

University of Southern California (USC)

Kenneth Nealson, Radu Popa

University of Tennessee Knoxville

Linda C. Kah, Jeffrey Moersch, Christopher Tate

University of Texas at Austin

Mackenzie Day, Gary Kocurek

University of Washington Seattle

Bernard Hallet, Ronald Sletten

University of Western Ontario

Raymond Francis, Emily McCullough

University of Winnipeg

Ed Cloutis

Utrecht University

Inge Loes ten Kate

Vernadsky Institute

Ruslan Kuzmin

Washington University in St. Louis (WUSTL)

Raymond Arvidson, Abigail Fraeman, Daniel Scholes, Susan Slavney, Thomas Stein,
Jennifer Ward

Western University

Jeffrey Berger

York University

John E. Moores

References and Notes

1. J. P. Grotzinger, J. Crisp, A. R. Vasavada, R. C. Anderson, C. J. Baker, R. Barry, D. F. Blake, P. Conrad, K. S. Edgett, B. Ferdowski, R. Gellert, J. B. Gilbert, M. Golombek, J. Gómez-Elvira, D. M. Hassler, L. Jandura, M. Litvak, P. Mahaffy, J. Maki, M. Meyer, M. C. Malin, I. Mitrofanov, J. J. Simmonds, D. Vaniman, R. V. Welch, R. C. Wiens; Mars Science Laboratory Mission and Science Investigation, Mars Science Laboratory Mission and Science Investigation. *Space Sci. Rev.* **170**, 5–56 (2012). [doi:10.1007/s11214-012-9892-2](https://doi.org/10.1007/s11214-012-9892-2)
2. R. P. I. Irwin III, A. D. Howard, R. A. Craddock, J. M. Moore, An intense terminal epoch of widespread fluvial activity on early Mars: 2. Increased runoff and paleolake development. *J. Geophys. Res.* **110**, E12S15 (2005). [doi:10.1029/2005JE002460](https://doi.org/10.1029/2005JE002460)
3. M. C. Malin, K. S. Edgett, Sedimentary rocks of early Mars. *Science* **290**, 1927–1937 (2000). [doi:10.1126/science.290.5498.1927](https://doi.org/10.1126/science.290.5498.1927)
4. R. B. Anderson, J. F. Bell III, Geologic mapping and characterization of Gale crater and implications for its potential as a Mars Science Laboratory landing site. *The Mars Journal* **5**, 76–128 (2010). [doi:10.1555/mars.2010.0004](https://doi.org/10.1555/mars.2010.0004)
5. R. E. Milliken, D. L. Bish, Sources and sinks of clay minerals on Mars. *Philos. Mag.* **90**, 2293–2308 (2010). [doi:10.1080/14786430903575132](https://doi.org/10.1080/14786430903575132)
6. B. J. Thomson, N. T. Bridges, R. Milliken, A. Baldridge, S. J. Hook, J. K. Crowley, G. M. Marion, C. R. de Souza Filho, A. J. Brown, C. M. Weitz, Constraints on the origin and evolution of the layered mound in Gale crater, Mars using Mars Reconnaissance Orbiter data. *Icarus* **214**, 413–432 (2011). [doi:10.1016/j.icarus.2011.05.002](https://doi.org/10.1016/j.icarus.2011.05.002)
7. J. P. Grotzinger, R. E. Milliken, The sedimentary rock record of Mars: Distribution, origins, and global stratigraphy, in *Sedimentary Geology of Mars*, J. Grotzinger, R. E. Milliken, Eds. (SEPM Special Publication, Tulsa, OK, 2012), vol. 102.
8. J. P. Grotzinger, Beyond water on Mars. *Nat. Geosci.* **2**, 231–233 (2009). [doi:10.1038/ngeo480](https://doi.org/10.1038/ngeo480)
9. A. Fraeman, R. E. Arvidson, J. G. Catalano, J. P. Grotzinger, R. V. Morris, S. L. Murchie, K. M. Stack, D. C. Humm, J. A. McGovern, F. P. Seelos, K. D. Seelos, C. E. Viviano, A hematite-bearing layer in Gale crater: Mapping and implications for past aqueous conditions. *Geology* **41**, 1103–1106 (2013). [doi:10.1130/G34613.1](https://doi.org/10.1130/G34613.1)
10. This decision was made by the entire MSL Science Team with strong consensus to drive a relatively short distance (~500 m) to examine rocks with higher thermal inertia values that also had an apparently strong spatial association with the AF unit. The prediction based on mapping was that fluvial and/or lacustrine rocks potentially derived from the crater rim might be encountered. The strata exposed at the base of Mt. Sharp are still considered to be the primary mission objective, and the team has established a departure date from Yellowknife Bay of the first week in July 2013.
11. The names used for rock and soil targets studied by Curiosity and reported in this paper are derived from established rock formations of northern Canada. In turn, these names derive from names of local geographic features where they occur, per convention, such as

mountains, streams, lakes, bays, etc. This choice of naming scheme celebrates the city of Yellowknife, Northwest Territories, long known to be a port of departure for geologic mapping expeditions into some of the oldest rocks of North America. Yellowknife crater was designated by the International Astronomical Union, and Yellowknife Bay demarcates the area into which Curiosity descended to study its geologic history.

12. A base map was created based on 25-cm-per-pixel HiRISE visible image data, 1-m-per-pixel elevation data, and 100-m-per-pixel Thermal Emission Imaging System data that was subdivided into 140 1.2- by 1.2-km (0.025°) quadrangles and mapped in detail by more than 30 team members. The group map was compiled, consolidated, and iteratively refined into a single GIS project.
13. In addition, minor units of eolian fill and/or bedforms and ejecta blankets adjacent to larger craters are present but are not discussed further.
14. Bradbury Landing refers to the patch of ground where Curiosity touched down on the surface of Mars. It commemorates the noted science fiction writer Raymond Bradbury and was designated by NASA.
15. E. M. Stolper, M. B. Baker, M. E. Newcombe, M. E. Schmidt, A. H. Treiman, A. Cousin, M. D. Dyar, M. R. Fisk, R. Gellert, P. L. King, L. Leshin, S. Maurice, S. M. McLennan, M. E. Minitti, G. Perrett, S. Rowland, V. Sautter, R. C. Wiens; MSL Science Team, The petrochemistry of Jake_M: A martian mugearite. *Science* **341**, 1239463 (2013). [doi:10.1126/science.1239463](https://doi.org/10.1126/science.1239463)
16. P.-Y. Meslin, O. Gasnault, O. Forni, S. Schröder, A. Cousin, G. Berger, S. M. Clegg, J. Lasue, S. Maurice, V. Sautter, S. Le Mouélic, R. C. Wiens, C. Fabre, W. Goetz, D. Bish, N. Mangold, B. Ehlmann, N. Lanza, A. M. Harri, R. Anderson, E. Rampe, T. H. McConnochie, P. Pinet, D. Blaney, R. Lévêillé, D. Archer, B. Barraclough, S. Bender, D. Blake, J. G. Blank, N. Bridges, B. C. Clark, L. DeFlores, D. Delapp, G. Dromart, M. D. Dyar, M. Fisk, B. Gondet, J. Grotzinger, K. Herkenhoff, J. Johnson, J. L. Lacour, Y. Langevin, L. Leshin, E. Lewin, M. B. Madsen, N. Melikechi, A. Mezzacappa, M. A. Mischna, J. E. Moores, H. Newsom, A. Ollila, R. Perez, N. Renno, J. B. Sirven, R. Tokar, M. de la Torre, L. d’Uston, D. Vaniman, A. Yingst; MSL Science Team, Soil diversity and hydration as observed by ChemCam at Gale crater, Mars. *Science* **341**, 1238670 (2013). [doi:10.1126/science.1238670](https://doi.org/10.1126/science.1238670)
17. R. M. E. Williams, J. P. Grotzinger, W. E. Dietrich, S. Gupta, D. Y. Sumner, R. C. Wiens, N. Mangold, M. C. Malin, K. S. Edgett, S. Maurice, O. Forni, O. Gasnault, A. Ollila, H. E. Newsom, G. Dromart, M. C. Palucis, R. A. Yingst, R. B. Anderson, K. E. Herkenhoff, S. Le Mouélic, W. Goetz, M. B. Madsen, A. Koefoed, J. K. Jensen, J. C. Bridges, S. P. Schwenzer, K. W. Lewis, K. M. Stack, D. Rubin, L. C. Kah, J. F. Bell 3rd, J. D. Farmer, R. Sullivan, T. Van Beek, D. L. Blaney, O. Pariser, R. G. Deen; MSL Science Team, Martian fluvial conglomerates at Gale crater. *Science* **340**, 1068–1072 (2013). [doi:10.1126/science.1237317](https://doi.org/10.1126/science.1237317)
18. The morphology of the “bay” is the result of postdepositional erosion, perhaps by eolian processes, as shown by the exposures of stratified rock that record dissection. These are eroded rocks and not, for example, shoreline berms. Therefore, the present-day topography does not reflect that at the time of deposition of those strata.

19. S. M. McLennan, R. B. Anderson, J. F. Bell III, J. C. Bridges, F. Calef III, J. L. Campbell, B. C. Clark, S. Clegg, P. Conrad, A. Cousin, D. J. Des Marais, G. Dromart, M. D. Dyar, L. A. Edgar, B. L. Ehlmann, C. Fabre, O. Forni, O. Gasnault, R. Gellert, S. Gordon, J. A. Grant, J. P. Grotzinger, S. Gupta, K. E. Herkenhoff, J. A. Hurowitz, P. L. King, S. Le Mouélic, L. A. Leshin, R. Lévêillé, K. W. Lewis, N. Mangold, S. Maurice, D. W. Ming, R. V. Morris, M. Nachon, H. E. Newsom, A. M. Ollila, G. M. Perrett, M. S. Rice, M. E. Schmidt, S. P. Schwenzer, K. Stack, E. M. Stolper, D. Y. Sumner, A. H. Treiman, S. VanBommel, D. T. Vaniman, A. Vasavada, R. C. Wiens, R. A. Yingst, MSL Science Team, Elemental geochemistry of sedimentary rocks at Yellowknife Bay, Gale crater, Mars. *Science* **343**, 1244734 (2014).
20. S. R. Taylor, S. M. McLennan, *Planetary Crusts: Their Composition, Origin, and Evolution* (Cambridge Univ. Press, Cambridge, 2009).
21. M. E. Schmidt *et al.*, APXS of first rocks encountered by Curiosity in Gale crater: Geochemical diversity and volatile element (K and Zn) enrichment. *Lunar Planet. Sci. Conf.* **44**, abstract 1278 (2013)
22. N. D. Smith, Some sedimentological aspects of planar cross-stratification in a sandy braided river. *J. Sediment. Petrol.* **42**, 624–634 (1972).
23. G. A. Macdonald, Pahoehoe, aa, and block lava. *Am. J. Sci.* **251**, 169–191 (1953).
[doi:10.2475/ajs.251.3.169](https://doi.org/10.2475/ajs.251.3.169)
24. A. Hurst, A. Scott, M. Vigorito, Physical characteristics of sand injectites. *Earth Sci. Rev.* **106**, 215–246 (2011). [doi:10.1016/j.earscirev.2011.02.004](https://doi.org/10.1016/j.earscirev.2011.02.004)
25. J. A. Ross, J. Peakall, G. M. Keevil, An integrated model of extrusive sand injectites in cohesionless sediments. *Sedimentology* **58**, 1693–1715 (2011). [doi:10.1111/j.1365-3091.2011.01230.x](https://doi.org/10.1111/j.1365-3091.2011.01230.x)
26. M. El-Tabakh, R. Riccioni, B. C. Schreiber, Evolution of late Triassic rift basin evaporites (Passaic Formation): Newark Basin, Eastern North America. *Sedimentology* **44**, 767–790 (1997). [doi:10.1046/j.1365-3091.1997.d01-47.x](https://doi.org/10.1046/j.1365-3091.1997.d01-47.x)
27. J. A. Fisher, G. J. Nichols, D. A. Waltham, Unconfined flow deposits in distal sectors of fluvial distributary systems: Examples from the Miocene Luna and Huesca Systems, northern Spain. *Sediment. Geol.* **195**, 55–73 (2007). [doi:10.1016/j.sedgeo.2006.07.005](https://doi.org/10.1016/j.sedgeo.2006.07.005)
28. D. T. Vaniman, D. L. Bish, D. W. Ming, T. F. Bristow, R. V. Morris, D. F. Blake, S. J. Chipera, S. M. Morrison, A. H. Treiman, E. B. Rampe, M. Rice, C. N. Achilles, J. Grotzinger, S. M. McLennan, J. Williams, J. Bell III, H. Newsom, R. T. Downs, S. Maurice, P. Sarrazin, A. S. Yen, J. M. Morookian, J. D. Farmer, K. Stack, R. E. Milliken, B. Ehlmann, D. Y. Sumner, G. Berger, J. A. Crisp, J. A. Hurowitz, R. Anderson, D. DesMarais, E. M. Stolper, K. S. Edgett, S. Gupta, N. Spanovich, MSL Science Team, Mineralogy of a mudstone at Yellowknife Bay, Gale crater, Mars. *Science* **343**, 1243480 (2014).
29. P. E. Potter, J. B. Maynard, P. Depetris, *Mud and Mudstones* (Springer, Berlin, 2005).
30. P. B. Attewell, I. W. Farmer, *Principles of Engineering Geology* (Chapman and Hall, London, New York, 1976).

31. Supplementary materials are available on *Science Online*.

32. D. Winston, Fluvial Systems of the Precambrian Belt Supergroup, Montana and Idaho, U.S.A. *Fluvial Sedimentology Memoir* **5**, 343 (1977).
33. D. S. McCormick, J. P. Grotzinger, Distinction of marine from alluvial Facies in the Paleoproterozoic (1.9 Ga) burnside formation, Kilohigok basin, N.W.T., Canada. *J. Sediment. Petrol.* **63**, 398–419 (1993).
34. A. S. Yen, R. Gellert, C. Schröder, R. V. Morris, J. F. Bell III, A. T. Knudson, B. C. Clark, D. W. Ming, J. A. Crisp, R. E. Arvidson, D. Blaney, J. Brückner, P. R. Christensen, D. J. DesMarais, P. A. de Souza Jr., T. E. Economou, A. Ghosh, B. C. Hahn, K. E. Herkenhoff, L. A. Haskin, J. A. Hurowitz, B. L. Joliff, J. R. Johnson, G. Klingelhöfer, M. B. Madsen, S. M. McLennan, H. Y. McSween, L. Richter, R. Rieder, D. Rodionov, L. Soderblom, S. W. Squyres, N. J. Tosca, A. Wang, M. Wyatt, J. Zipfel, An integrated view of the chemistry and mineralogy of martian soils. *Nature* **436**, 49–54 (2005). [Medline](#) [doi:10.1038/nature03637](https://doi.org/10.1038/nature03637)
35. P. R. Christensen, Regional dust deposits on Mars: Physical properties, age, and history. *J. Geophys. Res. Solid Earth* **91**, 3533–3545 (1986). [doi:10.1029/JB091iB03p03533](https://doi.org/10.1029/JB091iB03p03533)
36. N. T. Bridges, D. R. Muhs, Duststones on Mars: source, transport, deposition, and erosion, in *Sedimentary Geology of Mars* (SEPM Special Publication, Tulsa, OK, 2012), vol. 102, pp. 169–182.
37. N. Mangold, V. Ansan, P. Masson, C. Vincendon, Estimate of aeolian dust thickness in Arabia Terra, Mars: Implications of a thick mantle (>20 m) for hydrogen detection. *Geomorphol.: Relief, Processes, Environ.* **1/2009**, 23–32 (2009).
38. P. M. Sadler, Sediment accumulation rates and the completeness of stratigraphic sections. *J. Geol.* **89**, 569–584 (1981). [doi:10.1086/628623](https://doi.org/10.1086/628623)
39. A. M. Sarna-Wojcicki, S. Shipley, R. B. Waitt, D. Dzurisin, S. H. Wood, in *The 1980 Eruptions of Mount St. Helens, Washington*, P. W. Lipman, D. R. Mullineaux, Eds. (U.S. Geological Survey Professional Paper, Reston, VA, 1981), vol. 1250, pp. 577–600.
40. S. M. McLennan, J. F. Bell III, W. M. Calvin, P. R. Christensen, B. C. Clark, P. A. de Souza, J. Farmer, W. H. Farrand, D. A. Fike, R. Gellert, A. Ghosh, T. D. Glotch, J. P. Grotzinger, B. Hahn, K. E. Herkenhoff, J. A. Hurowitz, J. R. Johnson, S. S. Johnson, B. Jolliff, G. Klingelhöfer, A. H. Knoll, Z. Learner, M. C. Malin, H. Y. McSween Jr., J. Pockock, S. W. Ruff, L. A. Soderblom, S. W. Squyres, N. J. Tosca, W. A. Watters, M. B. Wyatt, A. Yen, Provenance and diagenesis of the evaporite-bearing Burns formation, Meridiani Planum, Mars. *Earth Planet. Sci. Lett.* **240**, 95–121 (2005). [doi:10.1016/j.epsl.2005.09.041](https://doi.org/10.1016/j.epsl.2005.09.041)
41. P. Fralick, J. P. Grotzinger, L. Edgar, in *Sedimentary Geology of Mars*, J. P. Grotzinger, R. E. Milliken, Eds. (SEPM Special Publication, Tulsa, OK, 2012), vol. 102.
42. J. D. Kim, N. Yee, V. Nanda, P. G. Falkowski, Anoxic photochemical oxidation of siderite generates molecular hydrogen and iron oxides. *Proc. Natl. Acad. Sci. U.S.A.* **110**, 10073–10077 (2013). [Medline](#) [doi:10.1073/pnas.1308958110](https://doi.org/10.1073/pnas.1308958110)

43. G. Furniss, J. F. Rittel, D. Winston, Gas bubble and expansion crack origin of “molar-tooth” calcite structures in the Middle Proterozoic Belt Supergroup, western Montana. *J. Sediment. Res.* **68**, 104–114 (1998). [doi:10.2110/jsr.68.104](https://doi.org/10.2110/jsr.68.104)
44. The term “raised ridges” may seem redundant, but the designation “raised” is meant to denote the substantial height of the ridges compared to their width.
45. P. S. Plummer, V. A. Gostin, Shrinkage cracks: Desiccation or syneresis? *J. Sediment. Res.* **51**, 1147–1156 (1981).
46. B. R. Pratt, Syneresis cracks: Subaqueous shrinkage in argillaceous sediments caused by earthquake-induced dewatering. *Sediment. Geol.* **117**, 1–10 (1998). [doi:10.1016/S0037-0738\(98\)00023-2](https://doi.org/10.1016/S0037-0738(98)00023-2)
47. M. D. Pollock, L. C. Kah, J. K. Bartley, Morphology of molar-tooth structures in Precambrian carbonates: Influence of substrate rheology and implications for genesis. *J. Sediment. Res.* **76**, 310–323 (2006). [doi:10.2110/jsr.2006.021](https://doi.org/10.2110/jsr.2006.021)
48. A. Hurst, J. A. Cartwright, D. Duranti, in *Subsurface Sediment Mobilisation*, R. R. H. P. Van Rensbergen, A. J. Maltman, C. K. Morley, Ed. (Geological Society of London Special Publication, London, 2003), vol. 216, pp. 123–137.
49. I. A. Kane, Development and flow structures of sand injectites: The Hind Sandstone Member injectite complex, Carboniferous, UK. *Mar. Pet. Geol.* **27**, 1200–1215 (2010). [doi:10.1016/j.marpetgeo.2010.02.009](https://doi.org/10.1016/j.marpetgeo.2010.02.009)
50. M. Huuse, J. Cartwright, A. Hurst, N. Steinsland, Seismic characterization of large-scale sandstone intrusions, in *Sand Injectites: Implications for Hydrocarbon Exploration and Production*, A. Hurst, J. Cartwright, Eds. (American Association of Petroleum Geologists Memoir, Tulsa, OK, 2007), vol. 87.
51. J. W. Cosgrove, Hydraulic fracturing during the formation and deformation of a basin: A factor in the dewatering of low-permeability sediments. *AAPG Bull.* **85**, 737–748 (2001).
52. D. W. Ming, P. D. Archer Jr., D. P. Glavin, J. L. Eigenbrode, H. B. Franz, B. Sutter, A. E. Brunner, J. C. Stern, C. Freissinet, A. C. McAdam, P. R. Mahaffy, M. Cabane, P. Coll, J. L. Campbell, S. K. Atreya, P. B. Niles, J. F. Bell III, D. L. Bish, W. B. Brinckerhoff, A. Buch, P. G. Conrad, D. J. Des Marais, B. L. Ehlmann, A. G. Fairén, K. Farley, G. J. Flesch, P. Francois, R. Gellert, J. A. Grant, J. P. Grotzinger, S. Gupta, K. E. Herkenhoff, J. A. Hurowitz, L. A. Leshin, K. W. Lewis, S. M. McLennan, K. E. Miller, J. Moersch, R. V. Morris, R. Navarro-González, A. A. Pavlov, G. M. Perrett, I. Pradler, S. W. Squyres, R. E. Summons, A. Steele, E. M. Stolper, D. Y. Sumner, C. Szopa, S. Teinturier, M. G. Trainer, A. H. Treiman, D. T. Vaniman, A. R. Vasavada, C. R. Webster, J. J. Wray, R. A. Yingst, MSL Science Team, Volatile and organic compositions of sedimentary rocks in Yellowknife Bay, Gale crater, Mars. *Science* **343**, 1245267 (2014).
53. J. D. Collinson, Sedimentology of unconformities within a fluvio-lacustrine sequence: Middle Proterozoic of Eastern North Greenland. *Sediment. Geol.* **34**, 145–166 (1983). [doi:10.1016/0037-0738\(83\)90084-2](https://doi.org/10.1016/0037-0738(83)90084-2)
54. L. B. Aspler, J. R. Chiarenzelli, B. L. Cousens, Fluvial, lacustrine and volcanic sedimentation in the Angikuni sub-basin, and initiation of ~1.84–1.79 Ga Baker Lake Basin, western

- Churchill Province, Nunavut, Canada. *Precambrian Res.* **129**, 225–250 (2004).
[doi:10.1016/j.precamres.2003.10.004](https://doi.org/10.1016/j.precamres.2003.10.004)
55. H. H. Kieffer, B. M. Jakosky, C. Snyder, M. Matthews, *Mars*, H. H. Kieffer, B. M. Jakosky, C. Snyder, M. Matthews, Eds. (Univ. of Arizona Press, Tucson, AZ, 1992).
 56. J. F. Bell III, *The Martian Surface: Composition, Mineralogy, and Physical Properties*, J. F. Bell III, Ed. (Cambridge Univ. Press, New York, 2008).
 57. J. C. Andrews-Hanna, K. W. Lewis, Early Mars hydrology: 2. Hydrological evolution in the Noachian and Hesperian epochs. *J. Geophys. Res. Planets* **116**, E02007 (2011).
[doi:10.1029/2010JE003709](https://doi.org/10.1029/2010JE003709)
 58. C. R. Woese, G. E. Fox, Phylogenetic structure of the prokaryotic domain: The primary kingdoms. *Proc. Natl. Acad. Sci. U.S.A.* **74**, 5088–5090 (1977). [Medline](#)
[doi:10.1073/pnas.74.11.5088](https://doi.org/10.1073/pnas.74.11.5088)
 59. E. I. Friedmann, Endolithic microorganisms in the antarctic cold desert. *Science* **215**, 1045–1053 (1982).[doi:10.1126/science.215.4536.1045](https://doi.org/10.1126/science.215.4536.1045)
 60. K. O. Stetter, Extremophiles and their adaptation to hot environments. *FEBS Lett.* **452**, 22–25 (1999). [Medline](#) [doi:10.1016/S0014-5793\(99\)00663-8](https://doi.org/10.1016/S0014-5793(99)00663-8)
 61. M. Rossi, M. Ciarabella, R. Cannio, F. M. Pisani, M. Moracci, S. Bartolucci, Extremophiles 2002. *J. Bacteriol.* **185**, 3683–3689 (2003). [Medline](#) [doi:10.1128/JB.185.13.3683-3689.2003](https://doi.org/10.1128/JB.185.13.3683-3689.2003)
 62. K. H. Nealson, Sediment bacteria: Who's there, what are they doing, and what's new? *Annu. Rev. Earth Planet. Sci.* **25**, 403–434 (1997). [Medline](#) [doi:10.1146/annurev.earth.25.1.403](https://doi.org/10.1146/annurev.earth.25.1.403)
 63. H. G. Schlegel, *General Microbiology* (Cambridge Univ. Press, Cambridge, ed. 7, 1993).
 64. G. Gottschalk, *Microbial Metabolism* (Springer, New York, 1994).
 65. R. J. Parkes, G. Webster, B. A. Cragg, A. J. Weightman, C. J. Newberry, T. G. Ferdelman, J. Kallmeyer, B. B. Jørgensen, I. W. Aiello, J. C. Fry, Deep sub-seafloor prokaryotes stimulated at interfaces over geological time. *Nature* **436**, 390–394 (2005). [Medline](#)
[doi:10.1038/nature03796](https://doi.org/10.1038/nature03796)
 66. K. H. Nealson, P. G. Conrad, Life: past, present and future. *Philos. Trans. R. Soc. London Ser. B* **354**, 1923–1939 (1999). [Medline](#)
 67. D. Z. Sousa, A. F. Salvador, J. Ramos, A. P. Guedes, S. Barbosa, A. J. Stams, M. M. Alves, M. A. Pereira, Activity and viability of methanogens in anaerobic digestion of unsaturated and saturated long-chain fatty acids. *Appl. Environ. Microbiol.* **79**, 4239–4245 (2013). [Medline](#) [doi:10.1128/AEM.00035-13](https://doi.org/10.1128/AEM.00035-13)
 68. M. S. Milman-Barris, J. R. Beckett, M. B. Baker, A. E. Hofmann, Z. Morgan, M. R. Crowley, D. Vielzeuf, E. Stolper, Zoning of phosphorous in igneous olivine. *Contrib. Mineral. Petrol.* **155**, 739–765 (2008). [doi:10.1007/s00410-007-0268-7](https://doi.org/10.1007/s00410-007-0268-7)
 69. M. A. Schoonen, Y. Xu, Nitrogen reduction under hydrothermal vent conditions: Implications for the prebiotic synthesis of C-H-O-N compounds. *Astrobiology* **1**, 133–142 (2001).

70. D. P. Summers, R. C. B. Basa, B. Khare, D. Rodoni, Abiotic nitrogen fixation on terrestrial planets: Reduction of NO to ammonia by FeS. *Astrobiology* **12**, 107–114 (2012). [Medline](#) [doi:10.1089/ast.2011.0646](#)
71. V. I. Oyama, B. J. Berdahl, G. C. Carle, Preliminary findings of the Viking gas exchange experiment and a model for martian surface chemistry. *Nature* **265**, 110–114 (1977). [doi:10.1038/265110a0](#)
72. H. P. Klein, The Viking Biological Investigation, General aspects. *J. Geophys. Res.* **82**, 4677–4680 (1977). [doi:10.1029/JS082i028p04677](#)
73. M. H. Hecht, S. P. Kounaves, R. C. Quinn, S. J. West, S. M. Young, D. W. Ming, D. C. Catling, B. C. Clark, W. V. Boynton, J. Hoffman, L. P. Deflores, K. Gospodinova, J. Kapit, P. H. Smith, Detection of perchlorate and the soluble chemistry of martian soil at the Phoenix lander site. *Science* **325**, 64–67 (2009). [Medline](#)
74. S. W. Squyres, A. H. Knoll, Sedimentary rocks and Meridiani Planum: Origin, diagenesis, and implications for life of Mars. *Earth Planet. Sci. Lett.* **240**, 1–10 (2005). [doi:10.1016/j.epsl.2005.09.038](#)
75. L. A. Leshin, P. R. Mahaffy, C. R. Webster, M. Cabane, P. Coll, P. G. Conrad, P. D. Archer Jr., S. K. Atreya, A. E. Brunner, A. Buch, J. L. Eigenbrode, G. J. Flesch, H. B. Franz, C. Freissinet, D. P. Glavin, A. C. McAdam, K. E. Miller, D. W. Ming, R. V. Morris, R. Navarro-González, P. B. Niles, T. Owen, R. O. Pepin, S. Squyres, A. Steele, J. C. Stern, R. E. Summons, D. Y. Sumner, B. Sutter, C. Szopa, S. Teinturier, M. G. Trainer, J. J. Wray, J. P. Grotzinger; MSL Science Team, Volatile, isotope, and organic analysis of martian fines with the Mars Curiosity rover. *Science* **341**, 1238937 (2013). [doi:10.1126/science.1238937](#)
76. R. E. Milliken, G. A. Swayze, R. E. Arvidson, J. L. Bishop, R. N. Clark, B. L. Ehlmann, R. O. Green, J. P. Grotzinger, R. V. Morris, S. L. Murchie, J. F. Mustard, C. Weitz, Opaline silica in young deposits on Mars. *Geology* **36**, 847–850 (2008). [doi:10.1130/G24967A.1](#)
77. R. V. Morris, G. Klingelhöfer, C. Schröder, D. S. Rodionov, A. Yen, D. W. Ming, P. A. de Souza Jr., I. Fleischer, T. Wdowiak, R. Gellert, B. Bernhardt, E. N. Evlanov, B. Zubkov, J. Foh, U. Bonnes, E. Kankeleit, P. Gütlisch, F. Renz, S. W. Squyres, R. E. Arvidson, Mössbauer mineralogy of rock, soil, and dust at Gusev crater, Mars: Spirit's journey through weakly altered olivine basalt on the plains and pervasively altered basalt in the Columbia Hills. *J. Geophys. Res. Planets* **111**, E02S13 (2006). [doi:10.1029/2005JE002584](#)
78. R. V. Morris *et al.*, Mossbauer mineralogy of rock, soil, and dust at Meridiani Planum, Mars: Opportunity's journey across sulfate-rich outcrop, basaltic sand and dust, and hematite lag deposits. *J. Geophys. Res.* **111**, E12S15 (2006).
79. J. F. Bell 3rd, S. W. Squyres, R. E. Arvidson, H. M. Arneson, D. Bass, W. Calvin, W. H. Farrand, W. Goetz, M. Golombek, R. Greeley, J. Grotzinger, E. Guinness, A. G. Hayes, M. Y. Hubbard, K. E. Herkenhoff, M. J. Johnson, J. R. Johnson, J. Joseph, K. M. Kinch, M. T. Lemmon, R. Li, M. B. Madsen, J. N. Maki, M. Malin, E. McCartney, S. McLennan, H. Y. McSween Jr., D. W. Ming, R. V. Morris, E. Z. Dobrea, T. J. Parker, J. Proton, J. W. Rice Jr., F. Seelos, J. M. Soderblom, L. A. Soderblom, J. N. Sohl-Dickstein, R. J. Sullivan, C. M. Weitz, M. J. Wolff, Pancam multispectral imaging results from the

- Opportunity Rover at Meridiani Planum. *Science* **306**, 1703–1709 (2004).
[doi:10.1126/science.1105245](https://doi.org/10.1126/science.1105245)
80. R. M. Cornell, U. Schwertmann, *The Iron Oxides: Structure, Properties, Reactions, Occurrence and Uses* (Wiley-VCH, Weinheim, Germany, ed. 2, 2003).
81. G. N. Schrauzer, T. D. Guth, Hydrogen evolving systems. 1. The formation of molecular hydrogen from aqueous suspensions of iron(II) hydroxide and reactions with reducible substrates, including molecular nitrogen. *J. Am. Chem. Soc.* **98**, 3508–3513 (1976).
[doi:10.1021/ja00428a019](https://doi.org/10.1021/ja00428a019)
82. W. D. Grant, Life at low water activity. *Philos. Trans. R. Soc. London Ser. B* **359**, 1249–1267 (2004). [Medline](https://pubmed.ncbi.nlm.nih.gov/15021502/) [doi:10.1098/rstb.2004.1502](https://doi.org/10.1098/rstb.2004.1502)
83. A. H. Knoll, J. Grotzinger, Water on Mars and the prospect of martian life. *Elements* **2**, 169–173 (2006). [doi:10.2113/gselements.2.3.169](https://doi.org/10.2113/gselements.2.3.169)
84. J. P. Williams, J. E. Hallsworth, Limits of life in hostile environments: No barriers to biosphere function? *Environ. Microbiol.* **11**, 3292–3308 (2009). [Medline](https://pubmed.ncbi.nlm.nih.gov/19207914/)
[doi:10.1111/j.1462-2920.2009.02079.x](https://doi.org/10.1111/j.1462-2920.2009.02079.x)
85. N. J. Tosca, A. H. Knoll, S. M. McLennan, Water activity and the challenge for life on early Mars. *Science* **320**, 1204–1207 (2008). [doi:10.1126/science.1155432](https://doi.org/10.1126/science.1155432)
86. S. Fendrihan, M. Dornmayr-Pfaffenhuemer, F. W. Gerbl, A. Holzinger, M. Grösbacher, P. Briza, A. Erler, C. Gruber, K. Plätzer, H. Stan-Lotter, Spherical particles of halophilic archaea correlate with exposure to low water activity—implications for microbial survival in fluid inclusions of ancient halite. *Geobiology* **10**, 424–433 (2012). [Medline](https://pubmed.ncbi.nlm.nih.gov/22633714/)
[doi:10.1111/j.1472-4669.2012.00337.x](https://doi.org/10.1111/j.1472-4669.2012.00337.x)
87. C. Demergasso, E. O. Casamayor, G. Chong, P. Galleguillos, L. Escudero, C. Pedrós-Alió, Distribution of prokaryotic genetic diversity in athalassohaline lakes of the Atacama Desert, Northern Chile. *FEMS Microbiol. Ecol.* **48**, 57–69 (2004). [Medline](https://pubmed.ncbi.nlm.nih.gov/15381013/)
[doi:10.1016/j.femsec.2003.12.013](https://doi.org/10.1016/j.femsec.2003.12.013)
88. A. Kish, G. Kirkali, C. Robinson, R. Rosenblatt, P. Jaruga, M. Dizdaroglu, J. DiRuggiero, Salt shield: Intracellular salts provide cellular protection against ionizing radiation in the halophilic archaeon, *Halobacterium salinarum* NRC-1. *Environ. Microbiol.* **11**, 1066–1078 (2009). [Medline](https://pubmed.ncbi.nlm.nih.gov/19207914/) [doi:10.1111/j.1462-2920.2008.01828.x](https://doi.org/10.1111/j.1462-2920.2008.01828.x)
89. L. R. Dartnell, L. Desorger, J. M. Ward, A. J. Coates, Modelling the surface and subsurface martian radiation environment: Implications for astrobiology. *Geophys. Res. Lett.* **34**, L02207 (2007). [doi:10.1029/2006GL027494](https://doi.org/10.1029/2006GL027494)
90. A. I. López-Archilla, I. Marin, R. Amils, Microbial community composition and ecology of an acidic aquatic environment: The Tinto River, Spain. *Microb. Ecol.* **41**, 20–35 (2001).
[Medline](https://pubmed.ncbi.nlm.nih.gov/1155432/)
91. J.-P. Bibring, Y. Langevin, J. F. Mustard, F. Poulet, R. Arvidson, A. Gendrin, B. Gondet, N. Mangold, P. Pinet, F. Forget, M. Berthé, J. P. Bibring, A. Gendrin, C. Gomez, B. Gondet, D. Jouglet, F. Poulet, A. Soufflot, M. Vincendon, M. Combes, P. Drossart, T. Encrenaz, T. Fouchet, R. Merchiorri, G. Belluci, F. Altieri, V. Formisano, F. Capaccioni, P. Cerroni, A. Coradini, S. Fonti, O. Korablev, V. Kottsov, N. Ignatiev, V. Moroz, D. Titov,

- L. Zasova, D. Loiseau, N. Mangold, P. Pinet, S. Douté, B. Schmitt, C. Sotin, E. Hauber, H. Hoffmann, R. Jaumann, U. Keller, R. Arvidson, J. F. Mustard, T. Duxbury, F. Forget, G. Neukum, Global mineralogical and aqueous mars history derived from OMEGA/Mars Express data. *Science* **312**, 400–404 (2006). [doi:10.1126/science.1122659](https://doi.org/10.1126/science.1122659)
92. T. F. Bristow, R. E. Milliken, Terrestrial perspective on authigenic clay mineral production in ancient martian lakes. *Clays Clay Miner.* **59**, 339–358 (2011). [doi:10.1346/CCMN.2011.0590401](https://doi.org/10.1346/CCMN.2011.0590401)
 93. S. L. Murchie, J. F. Mustard, B. L. Ehlmann, R. E. Milliken, J. L. Bishop, N. K. McKeown, E. Z. Noe Dobrea, F. P. Seelos, D. L. Buczkowski, S. M. Wiseman, R. E. Arvidson, J. J. Wray, G. Swayze, R. N. Clark, D. J. Des Marais, A. S. McEwen, J.-P. Bibring, A synthesis of martian aqueous mineralogy after 1 Mars year of observations from the Mars Reconnaissance Orbiter. *J. Geophys. Res. Planets* **114**, E00D06 (2009). [doi:10.1029/2009JE003342](https://doi.org/10.1029/2009JE003342)
 94. A. G. Fairén, V. Chevrier, O. Abramov, G. A. Marzo, P. Gavin, A. F. Davila, L. L. Tornabene, J. L. Bishop, T. L. Roush, C. Gross, T. Kneissl, E. R. Uceda, J. M. Dohm, D. Schulze-Makuch, J. A. Rodríguez, R. Amils, C. P. McKay, Noachian and more recent phyllosilicates in impact craters on Mars. *Proc. Natl. Acad. Sci. U.S.A.* **107**, 12095–12100 (2010). [Medline doi:10.1073/pnas.1002889107](https://doi.org/10.1073/pnas.1002889107)
 95. H. L. James, A. F. Trendall, Banded iron formation: Distribution in time and paleoenvironmental significance, *Mineral Deposits and the Evolution of the Biosphere: Dahlem Workshop Report*, H. D. Holland, A. M. Schidlowski, Eds. (Springer, Berlin, Heidelberg, New York, 1982), vol. 3.
 96. A. Bekker, J. F. Slack, N. Planavsky, B. Krapez, A. Hofmann, K. O. Konhauser, O. J. Rouxel, Iron formation: The sedimentary product of a complex interplay among mantle, tectonic, oceanic, and biospheric processes. *Econ. Geol.* **105**, 467–508 (2010). [doi:10.2113/gsecongeo.105.3.467](https://doi.org/10.2113/gsecongeo.105.3.467)
 97. J. P. Grotzinger, in *Controls on Carbonate Platforms and Basin Development*, P. D. Crevello, J. L. Wilson, J. F. Sarg, J. F. Read, Eds. (SEPM Special Publication, Tulsa, OK, 1989), vol. 44, pp. 79–106.
 98. J. P. Grotzinger, N. P. James, in *Carbonate Sedimentation and Diagenesis in the Evolving Precambrian World*, J. P. Grotzinger, N. P. James, Eds. (SEPM Special Publication, Tulsa, OK, 2000), vol. 67, pp. 3–20.
 99. K. W. Lewis, O. Aharonson, J. P. Grotzinger, R. L. Kirk, A. S. McEwen, T. A. Suer, Quasi-periodic bedding in the sedimentary rock record of Mars. *Science* **322**, 1532–1535 (2008). [doi:10.1126/science.1161870](https://doi.org/10.1126/science.1161870)
 100. R. C. Anderson, L. Jandura, A. B. Okon, D. Sunshine, C. Roumeliotis, L. W. Beegle, J. Hurowitz, B. Kennedy, D. Limonadi, S. McCloskey, M. Robinson, C. Seybold, K. Brown, Collecting samples in Gale crater, Mars; an Overview of the Mars Science Laboratory sample acquisition, sample processing and handling system. *Space Sci. Rev.* **170**, 57–75 (2012). [doi:10.1007/s11214-012-9898-9](https://doi.org/10.1007/s11214-012-9898-9)