

RESEARCH

Open Access



# A metagenomic study of the gut microbiome in Behcet's disease

Zi Ye<sup>1†</sup>, Ni Zhang<sup>1†</sup>, Chunyan Wu<sup>2</sup>, Xinyuan Zhang<sup>3</sup>, Qingfeng Wang<sup>1</sup>, Xinyue Huang<sup>1</sup>, Liping Du<sup>1</sup>, Qingfeng Cao<sup>1</sup>, Jihong Tang<sup>1</sup>, Chunjiang Zhou<sup>1</sup>, Shengping Hou<sup>1</sup>, Yue He<sup>1</sup>, Qian Xu<sup>2,4</sup>, Xiao Xiong<sup>2</sup>, Aize Kijlstra<sup>5</sup>, Nan Qin<sup>2,6</sup> and Peizeng Yang<sup>1\*</sup>

## Abstract

**Background:** Behcet's disease (BD) is a recalcitrant, multisystemic inflammatory disease that can lead to irreversible blindness. Microbial agents have been considered to contribute to the pathogenesis of this disease, but the underlying mechanisms remain unclear. In this study, we investigated the association of gut microbiome composition with BD as well as its possible roles in the development of this disease.

**Methods:** Fecal and saliva samples were collected from 32 active BD patients and 74 healthy controls. DNA extracted from fecal samples was subjected to metagenomic analysis, whereas DNA extracted from saliva samples was subjected to 16S rRNA gene sequencing analysis. The results were used to compare the composition and biological function of the microbiome between patients and healthy controls. Lastly, transplantation of pooled fecal samples from active BD patients into B10R/III mice undergoing experimental autoimmune uveitis (EAU) was performed to determine the causal relationship between the gut microbiome and BD.

**Results:** Fecal samples from active BD patients were shown to be enriched in *Bilophila* spp., a sulfate-reducing bacteria (SRB) and several opportunistic pathogens (e.g., *Parabacteroides* spp. and *Paraprevotella* spp.) along with a lower level of butyrate-producing bacteria (BPB) *Clostridium* spp. and methanogens (*Methanoculleus* spp. *Methanomethylophilus* spp.). Analysis of microbial functions revealed that capsular polysaccharide transport system, oxidation-reduction process, type III, and type IV secretion systems were also increased in active BD patients. Network analysis showed that the BD-enriched SRB and opportunistic pathogens were positively correlated with each other, but they were negatively associated with the BPB and methanogens. Animal experiments revealed that fecal microbiota transplantation with feces from BD patients significantly exacerbated EAU activity and increased the production of inflammatory cytokines including IL-17 and IFN- $\gamma$ .

**Conclusions:** Our findings revealed that BD is associated with considerable gut microbiome changes, which is corroborated by a mouse study of fecal microbiota transplants. A model explaining the association of the gut microbiome composition with BD pathogenesis is proposed.

**Keywords:** Behcet's disease, Gut microbiome, Metagenomic analysis, Fecal microbiota transplant

\* Correspondence: [peizengycmu@126.com](mailto:peizengycmu@126.com)

<sup>†</sup>Zi Ye and Ni Zhang contributed equally to this work.

<sup>1</sup>The First Affiliated Hospital of Chongqing Medical University, Chongqing Key Lab of Ophthalmology, Chongqing Eye Institute, Chongqing 400016, China

Full list of author information is available at the end of the article



## Background

Behcet's disease (BD) is a chronic, multisystemic, inflammatory disorder characterized by recurrent attacks of oral ulcers, genital ulcers, skin lesions, and uveitis [57, 65]. BD is a great public health concern, as it is one of the most common causes of blindness. Studies have shown that dysregulated autoimmunity associated with genetic factors and infectious agents may contribute to its pathogenesis [57, 65]. Aberrant activities of T helper 1 (Th1), Th17, and regulatory T (Treg) cells were observed in BD patients [57, 65]. Recent studies showed that the gut microbiome might play a crucial role in modulating Th1, Th17, and Treg cells [1, 22, 58]. Dysbiosis of the gut microbiome has been observed in many inflammatory autoimmune diseases, including multiple sclerosis (MS) [3], rheumatoid arthritis (RA) [68], ankylosing spondylitis [62], systemic lupus erythematosus (SLE) [19], and inflammatory bowel disease (IBD) [38]. Likewise, alteration of the gut microbiome was also shown to be associated with BD [9, 52, 54]. However, these studies on BD were based on 16S rRNA gene amplicon sequencing method that has its limitations, including potential skewing the microbial composition due to amplification bias [45] and inability to examine most microbes at species and strain level [24]. To thoroughly investigate the microbial components associated with the disease, we herein performed a metagenomic study of the gut microbiome in BD patients along with a group of healthy controls. Our results show that BD patients display a characteristic composition and functional profile of the gut microbiome different from that of healthy controls. Importantly, fecal transplantation into B10RIII mice undergoing experimental autoimmune uveitis (EAU) with pooled stool samples from BD patients exacerbated the eye symptoms in these animals. Based on the findings of this study, we propose a model to explain the association between the gut microbiome composition and BD pathogenesis.

## Methods

### Study participants

Thirty-two ocular BD patients receiving no medication except topical corticosteroids and cycloplegics for at least 1 month along with 74 sex-, age-, and BMI-matched healthy controls were recruited for this study. Individuals with cardiovascular diseases, diabetes, other inflammatory diseases, and infectious diseases were excluded. Diagnosis of BD was based on the diagnostic criteria of the international study group for BD [26]. Prior to sample collection, the subjects had not received antibiotics or probiotics for at least 1 month. Active BD was defined according to the presence of active intraocular inflammation. The demographic data (e.g., age, gender, and BMI), clinical manifestations and treatment information of all

patients and healthy controls were recorded (Additional file 1: Table S1). The study was approved by the Ethics Committee of Chongqing Medical University. Signed informed consent was obtained from all participants at the beginning of the study. All procedures were performed in accordance with the Declaration of Helsinki.

### Sample collection and DNA extraction

Fresh fecal samples and saliva samples were collected from the recruited subjects or B10RIII mice (fecal samples only) and were transported to our laboratory with an ice pack within 2 h. All samples were then frozen immediately and stored at  $-80^{\circ}\text{C}$  prior to analyses.

DNA was extracted from the samples using the QIAamp Fast DNA Stool Mini Kit (Qiagen, Hilden, Germany) according to the manufacturer's instructions. Briefly, 20  $\mu\text{l}$  proteinase K solution (20 mg/ml) and 100 mg zirconium beads (0.1 mm) were added to the pellet before the mixture was fully homogenized on a Mini-Beadbeater (FastPrep, Thermo Electron Corporation, USA) and then supplemented with buffer AL. The resulting mixture was incubated at  $70^{\circ}\text{C}$  for 10 min and supplemented with 200  $\mu\text{l}$  ethanol (96%) before being loaded onto the QIAamp Mini spin column and centrifuged at 8000 g for 1 min. The column was washed successively with 500  $\mu\text{l}$  buffer AW1 and 500  $\mu\text{l}$  buffer AW2. Finally, DNA was eluted with 100  $\mu\text{l}$  buffer AE. DNA concentration was measured using a NanoDrop (ThermoFisher, USA). The integrity and size of the extracted DNA were examined with electrophoresis on 1% agarose gel containing 0.5  $\mu\text{g/ml}$  ethidium bromide.

### Sequencing of 16S rRNA gene amplicon

DNA from 58 saliva samples (15 from untreated active BD patients and 43 from healthy controls) was subjected to amplification of polymerase chain reaction (PCR) using primers directed at hypervariable region 3–4 (V3–V4) of the 16S rRNA gene (341F and 806R). The PCR products were quantified using Qubit (Invitrogen, Carlsbad, CA, USA), multiplexed at even concentration and subject to 300 bp pair-end sequencing on Illumina MiSeq platform (Illumina, Inc., San Diego, CA, USA). The resulting raw reads were filtered using a quality control criterion (i.e., minimum average quality score = 20; maximum number of ambiguous N base = 3) and matched to sequences spanning the entire V3–V4 amplicon using PANDAseq [36]. A total of 2,642,548 merged sequences were generated from all samples, resulting in an average yield of  $45,561 \pm 6485$  sequences/sample. Merged sequences with 97% nucleotide sequence identity (97% identity) were binned into operational taxonomic units (OTUs) using UPARSE [11]. Based on the RDP classifier, a representative sequence of each OTU

was assigned to a taxonomic level in the RDP database using 0.8 as the minimum confidence threshold [8]. The OTU table was rarefied to 29,723 sequences/sample. Alpha and beta diversity were calculated using QIIME with the default parameters [25].

### Metagenomic sequencing

Following the Illumina TruSeq DNA Sample Prep v2 Guide (Illumina, Inc., San Diego, CA, USA), we constructed the DNA paired-end libraries with an insert size of 500 bp for the 76 fecal samples (24 from untreated active BD patients and 52 from normal controls). The quality of all libraries was evaluated using an Agilent bioanalyzer (Agilent Technologies, Wokingham, UK) and the DNA LabChip 1000 kit. All samples were subject to 150 bp paired-end sequencing on an Illumina HiSeq 4000 platform (Illumina, Inc., San Diego, CA, USA).

Raw reads were filtered to trim nucleotides from the 3' end using a quality threshold of 30 and remove adaptor contamination and low-quality reads (e.g., reads containing more than 50% nucleotides below Q30, reads short than 70 bp, and reads mapped to the human genome based on alignment with SOAPaligner 2.21 [28]). As a consequence, an average of 95.82% high quality reads was obtained from all samples.

### De novo assembly and construction of the gene catalog

To construct the gut gene catalog, SOAPdenovo [33] (version 2.04) was used to assemble the high quality reads from each sample into contigs. MetaGeneMark [41] (version 3.26) was used to predict open reading frames (ORFs) in contigs. To obtain a non-redundant gene set, pairwise comparison of predicted ORFs (filtered with a length of 100 bp) was performed using CD-HIT [29] (version 4.5.7) at 95% identity and 90% coverage. The final non-redundant gene catalog contained 1,502,032 microbial genes, which had an average length of 766 bp. Functional annotations were carried out by BLASTP search against the eggNOG 3.0 database [21] and KEGG database [23] ( $e$  value  $\leq 1e^{-5}$  and high-scoring segment pair scoring  $> 60$ ). For each functional feature (KO in KEGG database or OG in eggNOG), we estimated its abundance by accumulating the relative abundance of all genes belonging to this feature.

### Taxonomic and gene profiling

SOAPalign2.21 was used to align clean reads to the microbial reference genomes downloaded from the National Center for Biological Information (NCBI, <http://www.ncbi.nlm.nih.gov>) (74,201 genomes, including 65,770 bacterial, 898 archaeal, 1508 fungal and 6025 viral genomes). The taxonomic relative abundance profile was generated following the procedure described by Qin et al. [48]. Reads aligned to multiple taxa were

allocated proportionally to read counts uniquely mapped to these taxa (normalized by genome length). The same strategy was performed for the gene abundance profile.

### MGS analysis

Genes were clustered into Metagenomic Species (MGS) following the method described by Le Chatelier et al. [27] and Nielsen et al. [40], as described in the following section. First, based on the abundance variation across all individuals, the differentially abundant genes ( $P < 0.05$  in Wilcoxon test) with a Spearman correlation coefficient ( $\rho$ )  $> 0.8$  were clustered using single-linkage clustering according to their abundance variation across all individuals. Second, the mean abundance of each cluster with more than 25 genes was computed, and clusters with  $\rho > 0.8$  were fused to produce MGS. The taxonomic annotation and abundance profile of each MGS were generated according to the taxonomy and the relative abundance of the corresponding genes. Following the previously described procedure [48], each MGS was assigned to a taxonomical assignment from strain to super kingdom level, with a threshold of  $> 90\%$  of the genes in this MGS as well as with the best hit to the same phylogenetic group ( $> 95\%$  identity and  $> 90\%$  overlap of query).

### Classifier

We used random forest model (randomForest package in R) to build the classifier based on the abundance profiling of MGSs. The predictive performance (estimated by 10-fold cross-validation) was optimal when the top 13 most discriminatory MGSs were included, showing that these 13 MGSs had the most discriminatory power. Using these 13 MGSs as predictors, a mean classification error of 0.18 was achieved, and the area under the receiver operating characteristic (ROC) curve (AUC) was 0.811(95% confidence interval (CI) 0.70–0.92, sensitivity 87.5%, and specificity 67.3%). The ROC curve was plotted using the pROC R package.

### Correlation network

SparCC [15] was used to construct the association network of BD. Briefly, bootstrapping of 100 repetitions was used to compute the  $P$  value for each correlation. The resulting two-sided pseudo  $P$  values were adjusted for multiple comparisons using the Benjamini and Hochberg correction [2]. Only significant correlations with an adjusted  $P < 0.1$  were presented in the network, which was visualized with Cytoscape3.0.2.

### Animals and reagents

B10RIII mice were purchased from Jackson Laboratory (Bar Harbor, ME, USA) and housed under standard (specific pathogen free) conditions. Human interphotoreceptor

retinoid binding protein peptide spanning amino acid residues 161–180 (IRBP<sub>161–180</sub>, SGIPYIISYLHPGNTILHVD) was purchased from Shanghai Sangon Biological Engineering Technology and Services Ltd. Co. Complete Freund's adjuvant (CFA) supplemented with 1.0 mg/ml *Mycobacterium tuberculosis* strain (MTB) was purchased from Sigma-Aldrich (St. Louis, MO, USA). The animal study was approved by the Ethics Committee of the First Affiliated Hospital of Chongqing Medical University and was carried out according to the ARVO Statement for the Use of Animals in Ophthalmic and Vision Research.

### Fecal microbiome transplantation in mice

Eleven B10RIII mice were first treated with an antibiotic cocktail containing ampicillin (1 mg/ml), neomycin (1 mg/ml), metronidazole (1 mg/ml), and vancomycin (0.5 mg/ml) (all purchased from Sigma-Aldrich) for 3 weeks as described previously [37, 49]. Stool samples from five untreated BD patients and five healthy controls were used to colonize the B10RIII mice. The metadata of these donors are shown in Additional file 1: Table S1. Fecal microbiota transplant was performed as described previously [69]. Briefly, a fecal sample from each donor was resuspended in PBS to a final concentration of 200 mg/ml and then equal volumes of donor suspensions were pooled. Each mouse was orally administered with 200 µl of the pooled fecal suspension once a day for 1 week after the antibiotic treatment (four mice receiving pooled fecal suspension from untreated active BD patients, four mice receiving pooled fecal suspension from healthy controls, and the others transferred with PBS only). At day 7, mice were sacrificed and cecal content was obtained for subsequent analysis.

### EAU induction and lymphocyte response evaluation

Mice were immunized subcutaneously at the base of the tail and bilateral thighs with 25 µg human interphotoreceptor retinoid-binding protein peptide spanning amino acid residues 161–180 (IRBP<sub>161–180</sub>, SGIPYIISYLHPGNTILHVD) peptide in 100 ml PBS, emulsified 1:1 v/v in complete Freund's adjuvant (CFA), supplemented with 1.0 mg/ml *M. tuberculosis* (MTB) after fecal transplantation. Clinical and histological scoring was performed as described previously [6, 59]. The spleen was removed from immunized mice on day 14, and spleen cells were separated. RNA was extracted from spleen cells and used as the template to generate cDNA using the PrimeScript RT reagent Kit with gDNA Eraser (TaKaRa, Otsu, Japan). Expression of IL-17 and IFN-γ mRNA was determined by real-time PCR analysis using the Power SYBR Green PCR Master MIX (Biosystems, Warrington, UK) on an ABI 7500 Real-time PCR System (Applied Biosystems, CA, USA). The primers for IL-17, IFN-γ, and β-actin were as follows: IL-17 forward: 5'-CTCA

ACCGTTCCACGTCACCCT-3' and reverse: 5'-CCAGCTTCCCTCCGCATT-3'; IFN-γ forward: 5'-TCAA GTGGCATAGATGTGGAAGAA-3' and reverse: 5'-TG GCTCTGCAGGATTTTCATG-3'; β-actin forward: 5'-GGCTGTATTCCCCTCCATCG-3' and reverse: 5'-C CAGTTGGTAACAATGCCATGT-3'.

### Statistical analyses

The non-parametric Wilcoxon test (wilcox.test in R) was employed to analyze the statistical significance of the gene, KO, OG, enzyme, and different taxonomic (phylum, genus, species) levels. The relative abundance of these features was subjected to statistical analyses. The Benjamini-Hochberg method was used for correction in multiple comparisons in which a *P* value < 0.1 was considered significant. Enriched features with an adjusted *P* < 0.1 were identified, and the enrichment group was then determined according to a higher rank-sum value. Linear discriminant analysis (LDA) effect size (LEfSe) analysis [51] was used to determine the features (organisms, KOs, or OGs) most likely to explain differences between the BD and healthy control group. Different features with an LDA score cut-off of 2.0 were identified. KO modules with a reporter score of *Z* > 1.6 was identified as an enriched module, which was computed from the *Z* scores of individual KOs [14, 43].

## Results

### Altered gut microbial composition in BD patients.

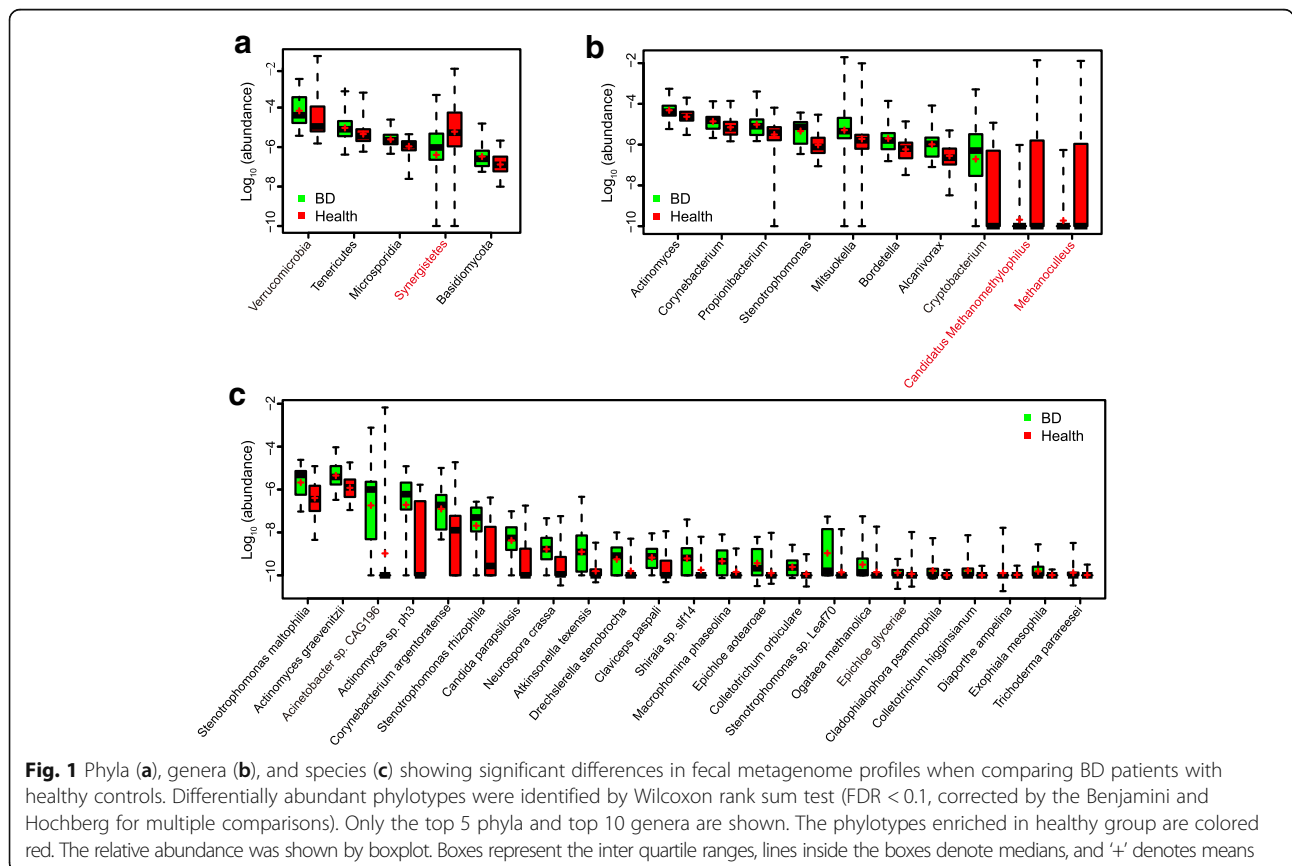
To investigate the composition and function of the gut microbiome in BD patients, we sequenced the metagenome of 76 fecal samples (24 from untreated active BD patients and 52 gender- and age-matched healthy controls) (Additional file 1: Table S1). An average of 6.4 ± 2.1 Gb clean reads was generated per sample (Additional file 1: Table S2). The clean reads were aligned to the reference genomes from the National Center for Biological Information (NCBI) and Human Microbiome Project (HMP) catalogs. The results showed that *Bacteroidetes*, *Firmicutes*, and *Proteobacteria* were dominant phyla in both BD patients and healthy controls. The relative abundances of 97 genera and 23 species were significantly different between the BD patients and healthy controls (Additional file 1: Table S3). Up to 96 genera were enriched in BD patients, including 38 belonging to the fungal phylum *Ascomycota*, followed by two bacterial taxa, *Proteobacteria* (15 genera), and *Actinobacteria* (15 genera). Five genera were enriched in healthy controls and 2 of them were methanogens (*Methanoculleus* and *Methanomethylphilus*). At the species level, 23 microbes were enriched in the BD patients. Some of these are considered opportunistic pathogens, such as *Stenotrophomonas* spp., *Actinomyces* spp.,

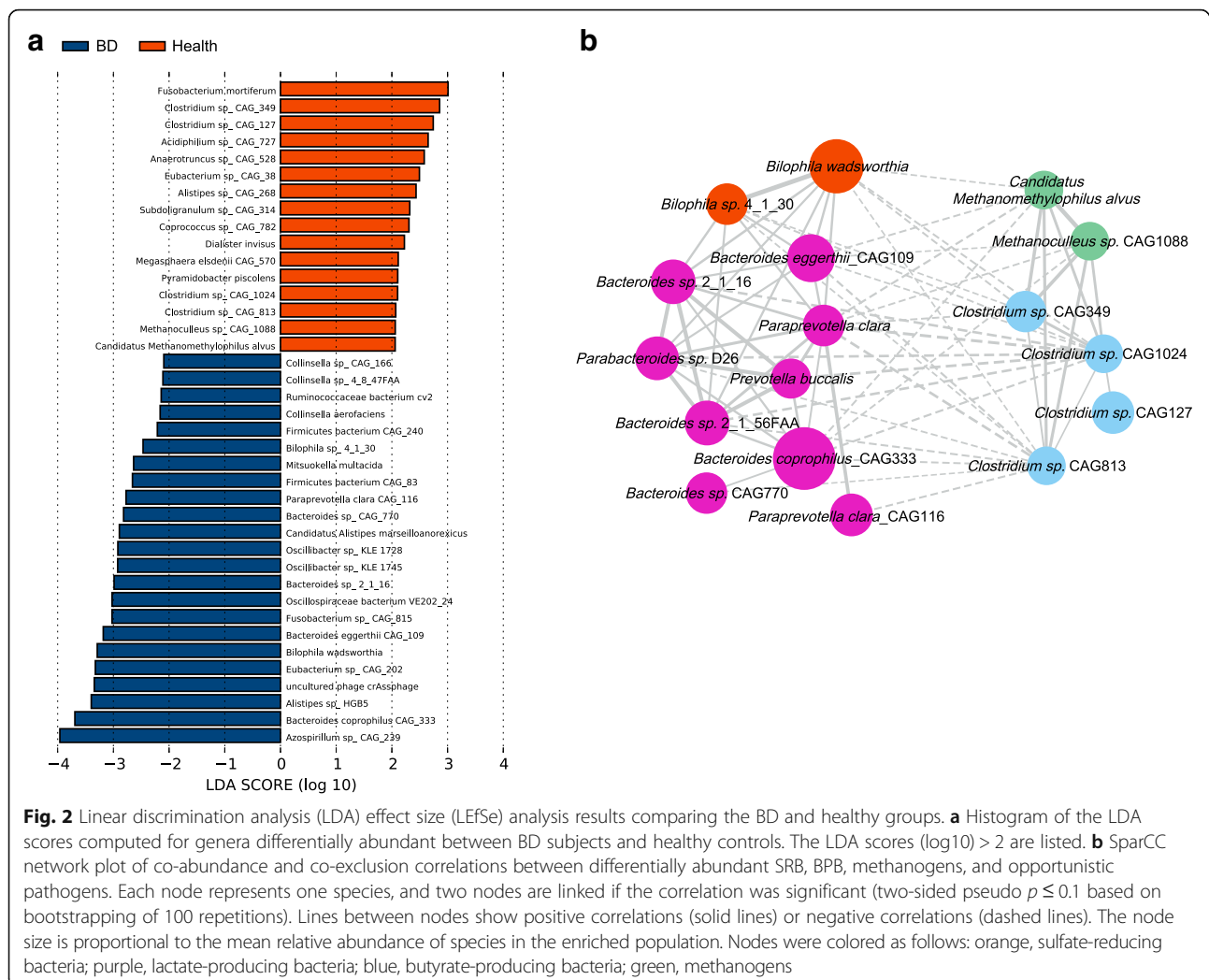


and *Corynebacterium* spp. (Fig. 1). Hence, our analysis revealed that BD patients displayed apparent differences in their gut microbial composition. Interestingly, at both genus and species levels, fungi showed a significant presence (49 of the 96 differential genera and 16 of the 23 differential species, Additional file 1: Table S3 and Fig. 1c).

To further investigate the features more likely to explain the differences between the BD and healthy groups, linear discriminant analysis (LDA) effect size (LEfSe) was performed by coupling standard tests for statistical significance with additional analyses examining biological consistency and effect relevance. Features with an LDA score cut-off of 2.0 were identified as being different. The results showed that sulfate-reducing bacteria (SRB) *Bilophila* spp. and opportunistic pathogens including *Parabacteroides* spp., *Paraprevotella* spp., and *Fusobacterium* spp. were significantly enriched in BD, whereas methanogens *Methanoculleus* spp., *Methanomethylophilus* spp., and butyrate-producing bacteria (BPB) *Clostridium* spp. were negatively associated with the patients (Fig. 2a). These results together disclosed that SRB and opportunistic pathogens were enriched in BD patients while methanogens and BPB were enriched in healthy controls.

**Metagenomic species (MGSs) profiling for the BD patients**  
 MGS profiling was also performed to investigate the BD-associated microbial components. A total of 17,896 microbial genes were found to be significantly different between the BD patients and healthy controls. Subsequent relative abundance profiling identified 13 MGSs. Of those, 11 were enriched in the BD group and 2 were enriched in the healthy control group (Fig. 3a). Twelve of the MGSs could be assigned to a known microbial taxon (Additional file 1: Table S4). We noticed that the genus *Bilophila*, *Alistipes*, *Paraprevotella*, and species *Faecalibacterium prausnitzii* were BD-enriched MGSs and that the strain *Clostridium* sp. CAG:127 was an enriched MGS in the healthy controls (Additional file 1: Table S4). Of these MGSs, one BD-enriched MGS belonged to SRB (*Bilophila*), one belonged to opportunistic pathogens (*Paraprevotella*), whereas one BD-depleted MGS belonged to BPB (*Clostridium* sp. CAG:127). Overall, the results of MGS profiling (Fig. 3) were in agreement with that of the microbial composition analysis (Figs. 1 and 2). Using the 13 MGSs as microbiome markers to discriminate the BD group from the healthy control group, the area under the receiver operating characteristic curve (AUC) was 81.1%, and the 95% confidence interval (CI) was 70–92% (Fig. 3d).





### Examination of interactions among differentially abundant microbes

SparCC network plot of co-abundance and co-exclusion correlations [15] was constructed to investigate the possible interactions between the differentially abundant microbes. Two patterns were apparent from the network. First, SRB and opportunistic pathogens formed one cluster whereas BPB and methanogens formed the other. Intra-cluster associations were mostly positive whereas inter-cluster associations were mostly negative (Fig. 2b). These results indicated that there were complex interactions between these microbes, although more studies are needed to further elucidate these interactions.

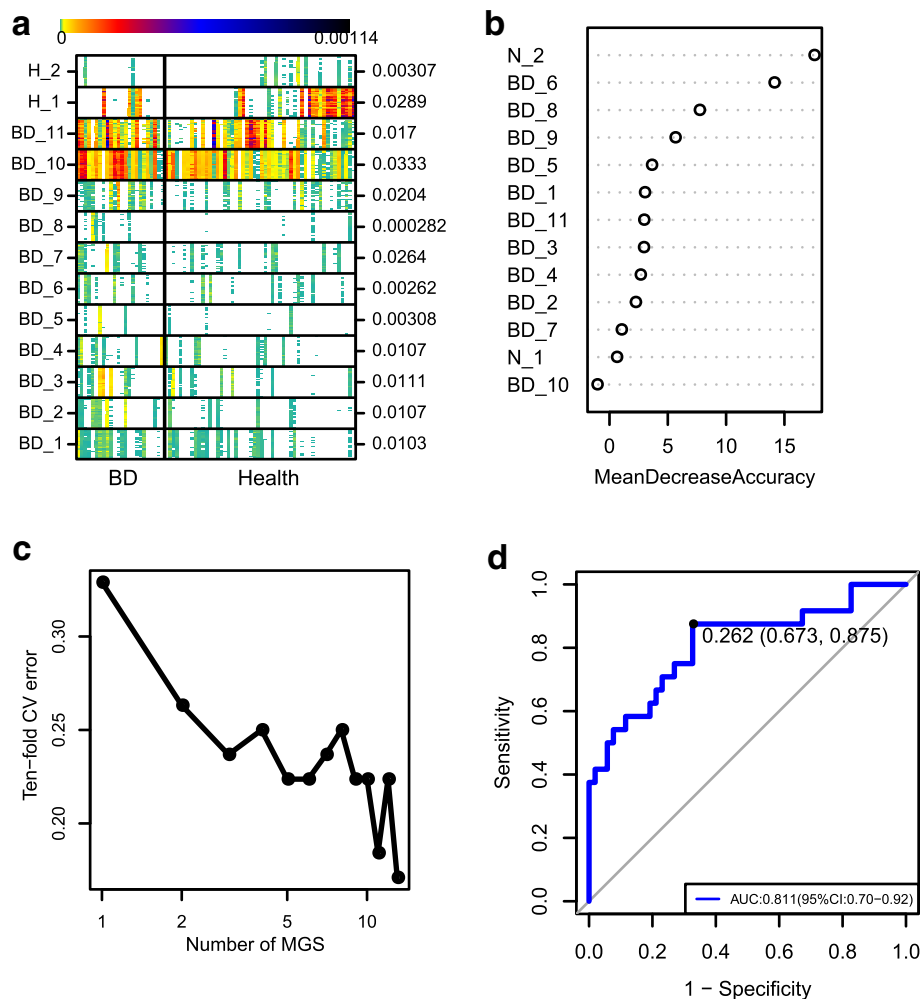
### Altered gut microbial function in BD patients

A LEfSe analysis was performed to investigate whether the differences in gut microbiome composition also had functional consequences concerning the expression of certain genes. We identified 25 KEGG (Kyoto Encyclopedia of Genes and Genomes database) orthologues (KO) and 13

eggNOG (evolutionary genealogy of genes: Non-supervised Orthologous Group database) orthologues (OG) that were significantly different between the BD patients and healthy controls (Additional file 1: Tables S5 and S6). The results showed that several KOs or OGs associated with the oxidation-reduction process were enhanced in BD patients. Furthermore, one BD-depleted KO was found to be associated with lysozyme, which has antibacterial properties due to the fact that it degrades peptidoglycans in the bacterial cell wall [12]. At the module level, the BD group was enriched in the capsular polysaccharide transport system, as well as in the types III and IV secretion systems (Additional file 1: Table S7).

### Altered oral microbial composition in BD patients

Recurrent oral ulcers are one of the most common clinical features in BD. To understand the profile of the oral microbiome and its association with the gut microbiome in BD, 16S rRNA gene amplicon sequencing was performed for 58 saliva samples (15 from untreated active



**Fig. 3** MGSs analysis. **a** The heatmap of 25 'tracer' genes abundance for each MGS were shown. Individuals are represented along the horizontal axis. Abundance of genes in rows is indicated by color gradient (white, not detected), and the enrichment significance is shown on the right with *P* value by Wilcoxon test. **b** The relative importance of each MGS in the predictive random forest model using the mean decreasing accuracy. **c** Relationship between the numbers of MGSs included in random forest model and the corresponding predictive performance (estimated by 10-fold cross-validation). **d** The ROC curve for the random forest model using 13 MGSs

BD patients and 43 from gender- and age-matched healthy controls). The results showed that *Bifidobacteriales* were enriched in BD at the order level. At the genus level, *Bifidobacterium*, *Prevotella*, and *Scardovia* were enriched in BD (Additional file 1: Table S8). Similar results were obtained with LEfSe analysis (Additional file 2: Figure S2). These results suggested that BD patients also have alterations in their oral microbiota composition.

#### Effect of fecal transplantation on experimental autoimmune uveitis (EAU) in B10RIII mice

The aforementioned experiments showed that the composition and function of the gut microbiome is different in active BD patients when compared to healthy controls. We further investigated whether the feces from

active BD patients could influence the development and severity of uveitis in an experimental animal model (EAU). The EAU model in mice is currently the best model for human autoimmune uveitis including BD and is widely used to study the pathogenetic mechanisms, prevention, or treatment strategies [7]. Stool samples from five BD patients or healthy controls were used to colonize B10RIII mice pretreated with antibiotics. Based on analyses of the Shannon index and PCoA, the recipient mice, with either the BD patients or healthy controls as the feces donor, showed significantly higher microbial diversity than, and different microbial functions from, their non-recipient counterparts (Additional file 2: Figure S1). Importantly, we observed an enrichment in *Bilophila*, *Alistipes*, and *Paraprevotella* in the BD-treated group, which was in line with the MGS results of the human

gut microbiome (Additional file 2: Figure S1c, Additional file 1: Table S9).

After fecal transplantation, mice were immunized with the retinal protein peptide IRBP<sub>161–180</sub> combined with CFA for EAU induction. At 14 days after immunization, we compared the clinical and histological scores as well as the expression of BD-associated cytokines in spleens between the BD-recipient group and healthy control-recipient group. The results showed that severe uveitis manifested by ciliary injection, corneal edema, and cells in the aqueous humor as well as posterior synechiae were observed in the BD-recipient group, which was supported by the clinical scores ranging from 2 to 4.5 (Fig. 4a). In the healthy control-recipient group and PBS-treated group, only a slight intraocular inflammatory reaction including conjunctival and/or ciliary injection was observed, evidenced by the clinical scores ranging between 0 and 1.5 (Fig. 4b, c). The BD-recipient mice showed a more severe clinical manifestation than the healthy control-recipient group and PBS-treated group (both  $P = 0.012$ , Fig. 4g). Histological analysis showed that the retinal architecture exhibited severe folding in the BD-recipient group (Fig. 4d). Massive infiltrates of inflammatory cells were observed throughout the retina and choroid as well as in the vitreous cavity in the group of mice receiving fecal transplants from BD patients (Fig. 4d). In comparison, only scattered inflammatory cells were observed in the vitreous cavity of mice receiving feces from healthy controls as well as in the PBS-treated animals. No significant folding of the retinal architecture was observed in these two groups (Fig. 4e, f). In line with our clinical results, the histological score in the BD-recipient group was significantly higher than that in the healthy control-recipient group and PBS treated-group (both  $P = 0.002$ , Fig. 4h). The expression of IL-17 and IFN- $\gamma$  mRNA was significantly increased in the BD-recipient group as compared with the healthy control-recipient group (IL-17,  $P < 0.001$ ; IFN- $\gamma$ ,  $P = 0.009$ ; Fig. 4i, j) or PBS-treated group (IL-17,  $P = 0.006$ ; IFN- $\gamma$ ,  $P = 0.014$ ; Fig. 4i, j).

## Discussion

In this study, we show that patients with BD have a distinct gut microbiome signature. BD is a systemic vascular disorder influenced by genetic and environmental factors [9, 57, 65]. As a host factor, the gut microbiome has recently received considerable attention for its potential role in the pathogenesis of BD [9, 52, 54], although a causal relationship has yet to be established. We applied the metagenomic method to characterize the disease-associated microbiome, whereby we identified possible gut microbiome biomarkers (including microbial composition and function) in BD patients. Fecal transplantation into mice using BD patients' feces

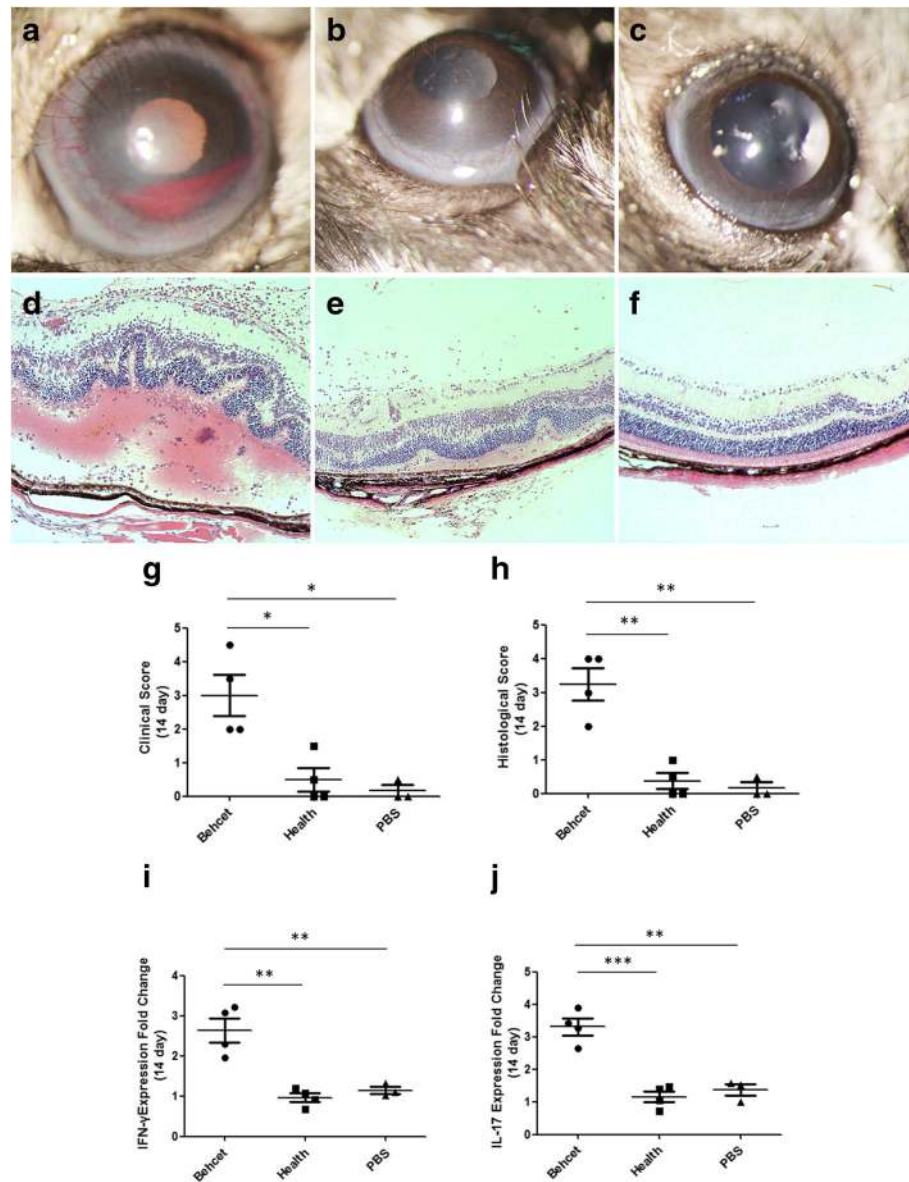
exacerbated the development of intraocular inflammation as well as IL-17 and IFN- $\gamma$  production in these animals. Taken together, these results indicate that gut microbiome composition might contribute to the development of this disease.

We established a gut microbial gene repertoire of BD and found that some opportunistic pathogens and SRB were enriched in the BD patients, while BPB and methanogens were enriched in the healthy controls. These data are in agreement with two recent studies from Italy and Japan [9, 54] that suggested that gut microbiome abnormalities are implicated in BD pathogenesis.

SRB are pro-inflammatory bacteria and have been shown to be involved in a number of inflammatory or immune diseases, including type 2 diabetes (T2D) [47], metabolic syndrome [66], and inflammatory bowel disease (IBD) [46]. *Bilophila wadsworthia*, a species of SRB, promotes a Th1-mediated immune response in dietary-fat-induced colitis [10]. SRB species inhibit butyrate  $\beta$ -oxidation and degrade butyrate [39, 46]. Butyrate is a beneficial metabolite that protects the integrity of the intestinal epithelial barrier and maintains host immune homeostasis by inducing differentiation of Treg cells [16, 60]. A decreased butyrate level leads to intestinal epithelium barrier dysfunction and facilitates the expression of various inflammatory components such as the microbe-associated molecular pattern (MAMP) or pathogen-associated molecular pattern (PAMP) factors, which can affect intestinal epithelial cells (IEC) [44]. Moreover, hydrogen sulfide (H<sub>2</sub>S), which is a cytotoxic byproduct of SRB and exerts pro-inflammatory effects at high concentrations [4, 55], can exacerbate intestinal epithelial barrier damage.

BPB are considered a group of beneficial bacteria and can ferment dietary fibers to produce butyrate [42]. As such, they have a protective role in human colonic health [32] and may have a therapeutic effect in IBD [17]. Previous studies have shown that the level of BPB was decreased in IBD patients [17, 61] and T2D patients [47], a finding that is in agreement with our current observation in BD patients. Methanogens are another group of bacteria revealed in this study to be associated with BD. Methane, which is generated by methanogens in the gastrointestinal tract of humans, is believed to ameliorate oxidative stress injury and can suppress the inflammatory response in various tissues and organs including the retina [63], colon [67], liver [64], and brain [53]. The present study also showed that depletion of methanogens in BD is associated with enriched functional components related to the oxidation-reduction processes. Interestingly, co-occurrence network analysis showed that SRB were negatively associated with BPB and methanogens in the BD group. A high level of H<sub>2</sub>S and a low level of butyrate were detected when SRB and BPB were co-cultured with lactate-producing bacteria





**Fig. 4** Effect of transplantation of feces from BD patients on EAU. Pooled feces from active BD patients transferred to B10RIII mice by oral gavage. Pooled feces from healthy individuals and PBS were transferred to mice as control groups. EAU was induced by immunization with IRBP<sub>161-180</sub>. On day 14 after EAU induction, clinical and histological scores of BD patients' feces-treated group (**a** and **d**), healthy' feces-treated group (**b** and **e**), and PBS-treated group (**c** and **f**) were determined. Combined data in (**g**) for clinical score and (**h**) for histological score. Each point represents an individual eye. The horizontal bars denote the average scores of each group. The spleens were also removed from EAU mice on day 14 after induction. IFN- $\gamma$  (**i**) and IL-17 (**j**) mRNA levels were evaluated by real-time PCR

[35]. Because SRB can use lactate and hydrogen as substrates to produce  $H_2S$ , SRB are in competition for substrates with lactate-utilizing bacteria and hydrogen-consuming bacteria such as BPB and methanogens. This might explain the negative correlation between SRB and BPB or methanogens found in the BD patients. The interactions between these three groups of bacteria have not yet been fully examined in humans. We believe that the metagenomic data obtained in our study may help studies on other autoimmune or metabolic diseases

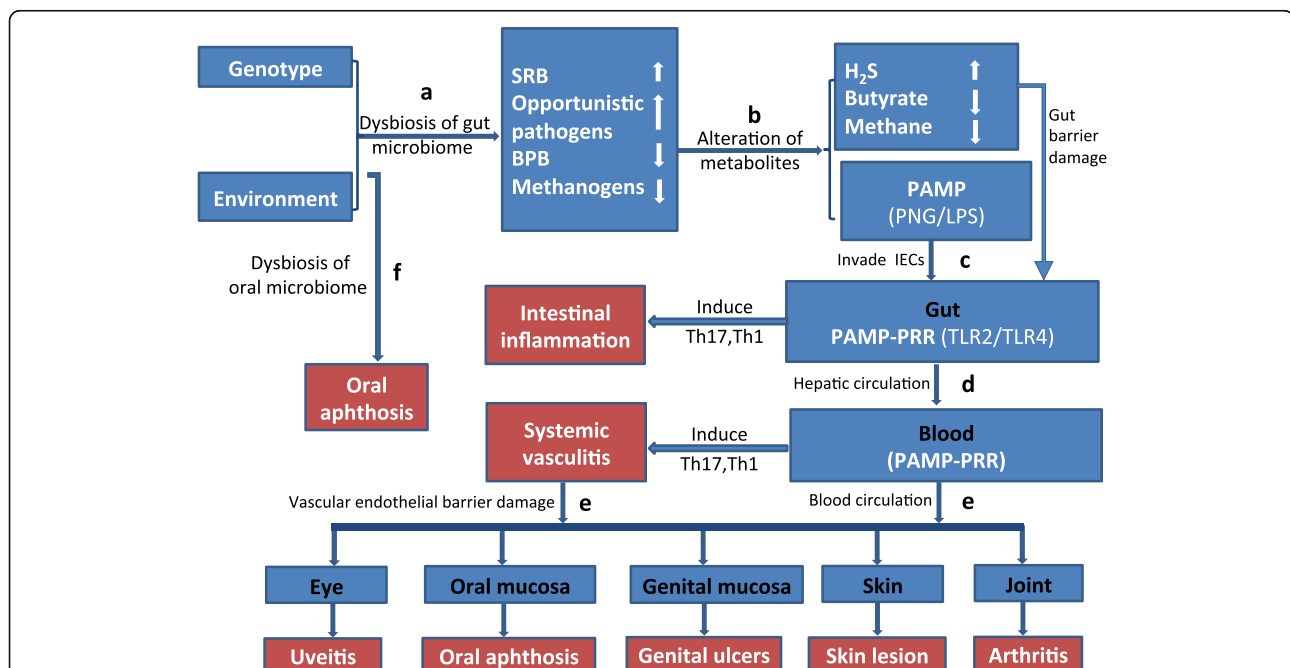
involving these bacteria such as RA, IBD, and MS [3, 38, 68]. The hypothesis mentioned above is, of course, speculative and further research is needed to support it.

Several opportunistic pathogens such as *Stenotrophomonas* spp., *Actinomyces* spp., *Corynebacterium* spp., and *Paraprevotella* spp. were observed to be enriched in active BD patients and were implicated in various diseases in susceptible hosts [5, 34, 56]. *Stenotrophomonas maltophilia*, which was found to be enriched in BD patients, is associated with the type IV secretion system

(T4SS) [50]. Interestingly, T4SS, along with type III secretion system (T3SS), was also found herein to coincide with BD-enriched functional components (Additional file 1: Table S7). Opportunistic pathogens may need T3SS or T4SS to deliver effector proteins into host cells, thereby inducing inflammatory responses [18, 20]. On the other hand, these opportunistic pathogens can produce lipopolysaccharide (LPS) and peptidoglycans (PGN), which function as so-called MAMPs or PAMPs and can trigger an inflammatory response via host cell receptors such as TLR4 and TLR2 [30]. The PGN-related functional component was also shown to be enriched in the BD patients investigated (Additional file 1: Table S6). These findings are consistent with previous studies from our group in which we showed that PGN/TLR2 and LPS/TLR4 pathways are involved in the aberrant immune response observed in BD [13, 30, 31]. We also demonstrated that TLR2 gene polymorphisms were involved in the susceptibility to BD and

that the TLR2 mRNA expression was increased following stimulation with PGN in healthy carriers of the susceptibility genes of BD [13].

Based on the aforementioned findings, we propose herein a hypothesis to explain the association between the gut microbiome signature and BD. BPB and methanogens are beneficial bacteria that can maintain proper host immune homeostasis. However, the balance may be tipped by an overgrowth of some opportunistic pathogens such as SRB, *Stenotrophomonas* spp., *Actinomyces* spp., and *Paraprevotella* spp., which leads to a decrease of BPB and methanogens. These abnormalities can induce intestinal epithelial barrier damage and facilitate the effector molecules or MAMP/PAMPs (PGN/LPS) to enter the IEC. Meanwhile, the process induces an over-expression of corresponding PRRs (TLR2/TLR4). Subsequently, as reported in previous studies, the ligands PGN/LPS can interact with receptors such as TLR2/TLR4. A decreased level of BPB and methanogens may



**Fig. 5** Chart of possible mechanisms explaining the relation between gut microbiome composition and development of Behcet's disease. **a** Dysbiosis of the gut microbiome might be caused via dietary intake in individuals carrying the susceptibility genes for BD. The dysbiosis of the gut microbiome in BD is characterized by enriched sulfate-reducing bacteria (SRB) and some opportunistic pathogens in association with depleted butyrate-producing bacteria (BPB) and methanogens. **b** Gut metabolism in BD shows an overwhelming presence of H<sub>2</sub>S and shortage of butyrate and methane. This abnormal environment can contribute to the intestinal epithelial barrier damage and facilitate effector molecules or pathogen-associated molecular pattern (PAMP) to invade the intestinal epithelial cells (IEC). **c** The PAMPs including PNG/LPS combine with their corresponding pattern recognition receptors (PRR) TLR2/TLR4 on IEC. This process leads to chronic inflammation involving hyperactivation of T helper 1 (TH1) and T helper 17 (TH17) cells in the gut. **d** The effector molecules or PAMP migrate to blood vessels through the hepatic circulation. Then, they recognize the receptors of TLR/TLR4 on vascular endothelial cells (VEC) and induce systemic vasculitis via the subsequent activation of TH1 and TH17 cells. **e** A damaged vascular endothelial barrier due to the systemic vasculitis. The effector molecules or PAMP can further migrate to organs or tissues such as the eye, joint, skin, oral, and genital mucosa through the damaged vascular endothelial barrier. Subsequently, the PAMP recognize the receptors TLR2/TLR4 in these organs or tissues, which result in various clinical manifestations of BD, such as uveitis, arthritis, skin lesions, oral, or genital ulcers. **f** Since oral ulcers (aphthosis) can be induced by both disturbances of the oral microbiome and dysbiosis of the gut microbiome, it presents as the most common clinical feature in BD

**Table 1** Links between the disturbed gut microbiome and their possible immune signaling pathway in BD patients

Disturbed gut microbiome	Enriched group	Species	Possible PAMP	Possible PRP	Possible related immune cells	Possible related immune cytokine	Reference
SRB	BD	<i>Bilophila</i> spp.	LPS, H <sub>2</sub> S	TLR4	Upregulation Th1 cells	IFN- $\gamma$	[7, 39, 60]
Opportunistic pathogens	BD	<i>Stenotrophomonas</i> spp., <i>Actinomyces</i> spp., <i>Corynebacterium</i> spp., <i>Paraprevotella</i> spp.	T3SS, T4SS, LPS, PGN	TLR2, TLR4	Upregulation Th1 and Th17 cells	Unknown	[5, 18, 34, 35, 50, 56]
BPB	N	<i>Clostridium</i> spp.	Butyrate	TLR- MyD88	Unregulation Treg cell	IL-10	[16, 46, 66]
Methanogens	N	<i>Methanoculleus</i> spp., <i>Methanomethylophilus</i> spp.	Methane	TLR- MyD88	Macrophages	IL-10	[32]

SRB sulfate-reducing bacteria; BPB butyrate-producing bacteria; PAMP pathogen-associated molecular pattern; PRP pattern recognition receptors; BD Behcet's disease; N normal controls; PGN peptidoglycan; LPS lipopolysaccharides; TLR Toll-like receptors; H<sub>2</sub>S hydrogen sulfide; T3SS type III secretion system; T4SS type IV secretion system

lead to an impaired control of the PGN/LPS- induced TLR-MyD88 pathway, which in turn induces a series of inflammatory reactions including systemic vasculitis in BD (for more details see Fig. 5 and Table 1). Of note, in this hypothesis, we would like to emphasize that it is the “disease-associated microbial community” (DAMC) rather than a single pathogen that plays a crucial role in disease pathogenesis. In this study, SRB and some other opportunistic pathogens together constitute the DAMC of BD.

Examination of the oral microbiome composition of BD patients revealed an abnormal level of *Prevotella*, which were also observed in the gut. This implies that changes in the bacterial composition can play a role in disease pathogenesis via both the intestines as well as the oral cavity. Our results are in part similar to a recent study on the oral microbiome in BD from the USA [52], which showed an increase of *Bifidobacterium* and a decrease of *Neisseria*.

We also attempted to identify bacterial biomarkers that may help in the diagnosis BD by generating 13 different MGS markers. When using these markers, we were able to distinguish BD patients from healthy controls with a moderate degree of certainty (AUC = 82.69). Analysis of a large size of samples is needed and further study should be carried out to explore whether these biomarkers can be useful in prevention, diagnosis, or prognosis of BD.

To determine whether the gut microbiome contributes to the development of BD, fecal transplantation was performed in mice undergoing autoimmune uveitis. We demonstrated that mice, colonized with whole gut microbiome from BD patients, showed an exacerbation of disease activity and an excessive production of pro-inflammatory cytokines. These results might confirm the hypothesis that the “DAMC” serves as a pathogen-like entity and contributes to the development of intraocular inflammatory disease. We must point out, however, that the gut microbiome in mice colonized

with patients' feces was not in complete conformity with the MGS results in patients. This might be due to the influence of the indigenous microbial community in mice, since the antibiotics treatment was stopped when the fecal transplantation was performed. This issue may be addressed by using germ-free mice in future experiments.

Taken together, we found a disturbed composition of the gut microbiome in BD patients and analyzed possible mechanisms underlying its role in disease pathogenesis. Based on the results, we propose a model of DAMC to explain the microbial involvement in the pathogenesis of BD. We realize that our model is speculative and hope that it will lead to further studies to elucidate the complex interactions between the gut microbiome and pathogenesis of this debilitating disease.

## Additional files

**Additional file 1:** Supplementary Tables. (XLSX 279 kb)

**Additional file 2:** Supplementary Figures. (PDF 975 kb)

## Abbreviations

AUC: Area under the receiver operating characteristic curve; BD: Behcet's disease; BPB: Butyrate-producing bacteria; CI: Confidence interval; DAMC: Disease-associated microbial community; DAMP: Damage-associated molecular patterns; EAU: Experimental autoimmune uveitis; eggNOG: Evolutionary genealogy of genes: Non-supervised Orthologous Groups database; H<sub>2</sub>S: Hydrogen sulfide; HMP: Human Microbiome Project; IBD: Inflammatory bowel disease; IEC: Intestinal epithelial cells; KEGG: Kyoto Encyclopedia of Genes and Genomes database; KO: KEGG orthologues; LEfSe: Linear discriminant analysis effect size; LPS: Lipopolysaccharide; MAMP: Microbe-associated molecular pattern; MGSs: Metagenomic species; MS: Multiple sclerosis; NCBI: National Center for Biological Information; OG: eggNOG orthologues; ORFs: Non-redundant open reading frames; OTUs: Operational taxonomic units; PAMP: Pathogen-associated molecular pattern; PGN: Peptidoglycans; RA: Rheumatoid arthritis; SLE: Systemic lupus erythematosus; SRB: Sulfate-reducing bacteria; T3SS: Type III secretion system; Th cell: T helper cell; TLRs: Toll-like receptors; Treg cell: Regulatory T cell

## Acknowledgements

This work was supported by National Key R&D Program of China (2016YFC0904000), Natural Science Foundation Major International (Regional) Joint Research Project (81720108009), National Natural Science

Foundation Project (81700826, 31670118, 81301475, 81770916, 81470620, 81770914), Chongqing Key Laboratory of Ophthalmology (CSTC, 2008CA5003), Chongqing Science and Technology Platform and Base Construction Program (cstc2014pt-sy10002), Natural Science Foundation of Zhejiang Province (LR15H030002), the Natural Science Foundation Project of Chongqing (cstc2017shmsA130073), Chongqing applied basic research projects and cutting-edge technology (cstc2016jcyjA1196) and Research fund for Traditional Chinese Medicine of Chongqing Health and Family Planning Commission (ZY20141013).

#### Availability of data and materials

Metagenomic sequencing data for all BD samples have been deposited in NCBI with the accession number of PRJNA431482 and metagenomic sequencing data for all control samples have been deposited in NCBI with accession number of PRJNA356225.

#### Authors' contributions

ZY, NZ, and PY conceived and directed the study. CW, YZ, NZ, QX, XX, and NQ analyzed the data. PY made the clinical diagnoses. QW, XH, JT, QC, CZ, LD, SH, and YH collected the samples. ZY, NZ, XH, JT, and QW extracted the fecal and salivary DNA. ZY, QW, and XH performed the animal experiment. CW and QX performed the 16S rRNA gene amplicon sequencing and metagenomic sequencing. ZY and NZ drafted the manuscript. PY, NQ, and AK reviewed the data interpretation and helped revise the final versions of the manuscript. All authors read and approved the final manuscript.

#### Ethics approval and consent to participate

All procedures followed the tenets of the Declaration of Helsinki and were approved by the Ethics Committee of Chongqing Medical University with written informed consent.

#### Competing interests

We declare that we have no financial and personal relationships with other people or organizations that can inappropriately influence our work, there is no professional or other personal interest of any nature or kind in any product, service, and/or company that could be construed as influencing the position presented in, or the review of, the manuscript entitled, "A metagenomic study of the gut microbiome in Behcet's disease".

#### Publisher's Note

Springer Nature remains neutral with regard to jurisdictional claims in published maps and institutional affiliations.

#### Author details

<sup>1</sup>The First Affiliated Hospital of Chongqing Medical University, Chongqing Key Lab of Ophthalmology, Chongqing Eye Institute, Chongqing 400016, China. <sup>2</sup>Realbio Genomics Institute, Shanghai 201114, China. <sup>3</sup>Beijing Institute of Ophthalmology, Beijing Tongren Eye Center, Beijing Tongren Hospital, Capital Medical University, Beijing Ophthalmology & Visual Sciences Key Lab, Beijing 100730, China. <sup>4</sup>Shenzhen Jinrui Biotechnology, Co. Ltd., Shenzhen 518000, China. <sup>5</sup>University Eye Clinic Maastricht, Maastricht, The Netherlands. <sup>6</sup>Shanghai Tenth People's Hospital Affiliated to Tongji University, Shanghai 200072, China.

Received: 8 January 2018 Accepted: 25 July 2018

Published online: 04 August 2018

#### References

- Atarashi K, Tanoue T, Shima T, Imaoka A, Kuwahara T, Momose Y, Cheng G, Yamasaki S, Saito T, Ohba Y, et al. Induction of colonic regulatory T cells by indigenous clostridium species. *Science*. 2011;331:337–41.
- Benjamini Y, Hochberg Y. Controlling the false discovery rate: a practical and powerful approach to multiple testing. *J R Stat Soc Ser B Methodol*. 1995;57:289–300.
- Berer K, Gerdes LA, Cekanaviciute E, Jia X, Xiao L, Xia Z, Liu C, Klotz L, Stauffer U, Baranzini SE, et al. Gut microbiota from multiple sclerosis patients enables spontaneous autoimmune encephalomyelitis in mice. *Proc Natl Acad Sci U S A*. 2017;114:10719–24.
- Bhatia M. H2S and inflammation: an overview. *Handb Exp Pharmacol*. 2015; 230:165–80.
- Brooke JS. *Stenotrophomonas maltophilia*: an emerging global opportunistic pathogen. *Clin Microbiol Rev*. 2012;25:2–41.
- Caspi RR. Experimental autoimmune uveoretinitis in the rat and mouse. *Curr Protoc Immunol*. 2003;Chapter 15:Unit 15 6.
- Caspi RR. A look at autoimmunity and inflammation in the eye. *J Clin Invest*. 2010;120:3073–83.
- Cole JR, Wang Q, Fish JA, Chai B, McGarrell DM, Sun Y, Brown CT, Porras-Alfaro A, Kuske CR, Tiedje JM. Ribosomal database project: data and tools for high throughput rRNA analysis. *Nucleic Acids Res*. 2014;42:D633–D42.
- Consolandi C, Turroni S, Emmi G, Severgnini M, Fiori J, Peano C, Biagi E, Grassi A, Rampelli S, Silvestri E, et al. Behcet's syndrome patients exhibit specific microbiome signature. *Autoimmun Rev*. 2015;14:269–76.
- Devkota S, Wang Y, Musch MW, Leone V, Fehlner-Peach H, Nadimpalli A, Antonopoulos DA, Jabri B, Chang EB. Dietary-fat-induced taurocholic acid promotes pathobiont expansion and colitis in IL10<sup>-/-</sup> mice. *Nature*. 2012; 487:104–8.
- Edgar RC. UPARSE: highly accurate OTU sequences from microbial amplicon reads. *Nat Meth*. 2013;10:996–8.
- Ellison RT 3rd, Giehl TJ. Killing of gram-negative bacteria by lactoferrin and lysozyme. *J Clin Invest*. 1991;88:1080–91.
- Fang J, Hu R, Hou S, Ye Z, Xiang Q, Qi J, Zhou Y, Kijlstra A, Yang P. Association of TLR2 gene polymorphisms with ocular Behcet's disease in a Chinese Han population. *Invest Ophthalmol Vis Sci*. 2013;54:8384–92.
- Feng Q, Liang S, Jia H, Stadlmayr A, Tang L, Lan Z, Zhang D, Xia H, Xu X, Jie Z, et al. Gut microbiome development along the colorectal adenoma-carcinoma sequence. *Nat Commun*. 2015;6:6528.
- Friedman J, Alm EJ. Inferring correlation networks from genomic survey data. *PLoS Comput Biol*. 2012;8:e1002687.
- Furusawa Y, Obata Y, Fukuda S, Endo TA, Nakato G, Takahashi D, Nakanishi Y, Uetake C, Kato K, Kato T, et al. Commensal microbe-derived butyrate induces the differentiation of colonic regulatory T cells. *Nature*. 2013;504: 446–50.
- Geirnaert A, Calatayud M, Grootaert C, Laukens D, Devriese S, Smaghe G, De Vos M, Boon N, Van de Wiele T. Butyrate-producing bacteria supplemented in vitro to Crohn's disease patient microbiota increased butyrate production and enhanced intestinal epithelial barrier integrity. *Sci Rep*. 2017;7:11450.
- Gillespie JJ, Phan IQ, Driscoll TP, Guillotte ML, Lehman SS, Rennoll-Bankert KE, Subramanian S, Beier-Sexton M, Myler PJ, Rahman MS, et al. The rickettsia type IV secretion system: unrealized complexity mired by gene family expansion. *Pathog Dis*. 2016;74
- He Z, Shao T, Li H, Xie Z, Wen C. Alterations of the gut microbiome in Chinese patients with systemic lupus erythematosus. *Gut Pathog*. 2016;8:64.
- Hueck CJ. Type III protein secretion systems in bacterial pathogens of animals and plants. *Microbiol Mol Biol Rev*. 1998;62:379–433.
- Jensen LJ, Julien P, Kuhn M, von Mering C, Muller J, Doerks T, Bork P. eggNOG: automated construction and annotation of orthologous groups of genes. *Nucleic Acids Research*. 2008;36:D250–D4.
- Kamada N, Seo SU, Chen GY, Nunez G. Role of the gut microbiota in immunity and inflammatory disease. *Nat Rev Immunol*. 2013;13:321–35.
- Kanehisa M, Goto S, Kawashima S, Okuno Y, Hattori M. The KEGG resource for deciphering the genome. *Nucleic Acids Res*. 2004;32:D277–D80.
- Konstantinidis KT, Tiedje JM. Prokaryotic taxonomy and phylogeny in the genomic era: advancements and challenges ahead. *Curr Opin Microbiol*. 2007;10:504–9.
- Kuczynski J, Stombaugh J, Walters WA, Gonzalez A, Caporaso JG, Knight R. Using QIIME to analyze 16S rRNA gene sequences from microbial communities. *Curr Protoc Bioinformatics*. 2011;Chapter 10:Unit 10.7.
- Criteria for diagnosis of Behcet's disease. International Study Group for Behcet's disease. *Lancet*. 1990;335:1078–80.
- Le Chatelier E, Nielsen T, Qin J, Prifti E, Hildebrand F, Falony G, Almeida M, Arumugam M, Batto JM, Kennedy S, et al. Richness of human gut microbiome correlates with metabolic markers. *Nature*. 2013;500:541–6.
- Li R, Li Y, Kristiansen K, Wang J. SOAP: short oligonucleotide alignment program. *Bioinformatics*. 2008;24:713–4.
- Li W, Godzik A. Cd-hit: a fast program for clustering and comparing large sets of protein or nucleotide sequences. *Bioinformatics*. 2006;22:1658–9.
- Liang L, Tan X, Zhou Q, Zhu Y, Tian Y, Yu H, Kijlstra A, Yang P. IL-1beta triggered by peptidoglycan and lipopolysaccharide through TLR2/4 and ROS-NLRP3 inflammasome-dependent pathways is involved in ocular Behcet's disease. *Invest Ophthalmol Vis Sci*. 2013;54:402–14.

31. Liu X, Wang C, Ye Z, Kijlstra A, Yang P. Higher expression of toll-like receptors 2, 3, 4, and 8 in ocular Behcet's disease. *Invest Ophthalmol Vis Sci*. 2013;54:6012–7.
32. Louis P, Flint HJ. Diversity, metabolism and microbial ecology of butyrate-producing bacteria from the human large intestine. *FEMS Microbiol Lett*. 2009;294:1–8.
33. Luo R, Liu B, Xie Y, Li Z, Huang W, Yuan J, He G, Chen Y, Pan Q, Liu Y, et al. SOAPdenovo2: an empirically improved memory-efficient short-read de novo assembler. *GigaScience*. 2012;1:1–6.
34. Lv LX, Fang DQ, Shi D, Chen DY, Yan R, Zhu YX, Chen YF, Shao L, Guo FF, Wu WR, et al. Alterations and correlations of the gut microbiome, metabolism and immunity in patients with primary biliary cirrhosis. *Environ Microbiol*. 2016;18:2272–86.
35. Marquet P, Duncan SH, Chassard C, Bernalier-Donadille A, Flint HJ. Lactate has the potential to promote hydrogen sulphide formation in the human colon. *FEMS Microbiol Lett*. 2009;299:128–34.
36. Masella AP, Bartram AK, Truszkowski JM, Brown DG, Neufeld JD. PANDAseq: paired-end assembler for illumina sequences. *BMC Bioinformatics*. 2012;13:1–7.
37. Moon C, Baldridge MT, Wallace MA, Burnham CA, Virgin HW, Stappenbeck TS. Vertically transmitted faecal IgA levels determine extra-chromosomal phenotypic variation. *Nature*. 2015;521:90–3.
38. Morgan XC, Tickle TL, Sokol H, Gevers D, Devaney KL, Ward DV, Reyes JA, Shah SA, LeLeiko N, Snapper SB, et al. Dysfunction of the intestinal microbiome in inflammatory bowel disease and treatment. *Genome Biol*. 2012;13:R79.
39. Muyzer G, Stams AJ. The ecology and biotechnology of sulphate-reducing bacteria. *Nat Rev Microbiol*. 2008;6:441–54.
40. Nielsen HB, Almeida M, Juncker AS, Rasmussen S, Li J, Sunagawa S, Plichta DR, Gautier L, Pedersen AG, Le Chatelier E, et al. Identification and assembly of genomes and genetic elements in complex metagenomic samples without using reference genomes. *Nat Biotech*. 2014;32:822–8.
41. Noguchi H, Park J, Takagi T. MetaGene: prokaryotic gene finding from environmental genome shotgun sequences. *Nucleic Acids Res*. 2006;34:5623–30.
42. Nyland L, Nermes M, Isolauri E, Salminen S, de Vos WM, Satokari R. Severity of atopic disease inversely correlates with intestinal microbiota diversity and butyrate-producing bacteria. *Allergy*. 2015;70:241–4.
43. Patil KR, Nielsen J. Uncovering transcriptional regulation of metabolism by using metabolic network topology. *Proc Natl Acad Sci U S A*. 2005;102:2685–9.
44. Peng L, Li ZR, Green RS, Holzman IR, Lin J. Butyrate enhances the intestinal barrier by facilitating tight junction assembly via activation of AMP-activated protein kinase in Caco-2 cell monolayers. *J Nutr*. 2009;139:1619–25.
45. Pinto AJ, Raskin L. PCR biases distort bacterial and archaeal community structure in pyrosequencing datasets. *PLoS One*. 2012;7:e43093.
46. Pitcher MC, Beatty ER, Cummings JH. The contribution of sulphate reducing bacteria and 5-aminosalicylic acid to faecal sulphide in patients with ulcerative colitis. *Gut*. 2000;46:64–72.
47. Qin J, Li Y, Cai Z, Li S, Zhu J, Zhang F, Liang S, Zhang W, Guan Y, Shen D, et al. A metagenome-wide association study of gut microbiota in type 2 diabetes. *Nature*. 2012;490:55–60.
48. Qin N, Yang F, Li A, Prifti E, Chen Y, Shao L, Guo J, Le Chatelier E, Yao J, Wu L, et al. Alterations of the human gut microbiome in liver cirrhosis. *Nature*. 2014;513:59–64.
49. Rakoff-Nahoum S, Paglino J, Eslami-Varzaneh F, Edberg S, Medzhitov R. Recognition of commensal microflora by toll-like receptors is required for intestinal homeostasis. *Cell*. 2004;118:229–41.
50. Rocco F, De Gregorio E, Colonna B, Di Nocera PP. *Stenotrophomonas maltophilia* genomes: a start-up comparison. *Int J Med Microbiol*. 2009;299: 535–46.
51. Segata N, Izard J, Waldron L, Gevers D, Miropolsky L, Garrett WS, Huttenhower C. Metagenomic biomarker discovery and explanation. *Genome Biol*. 2011;12:R60.
52. Seoudi N, Bergmeier LA, Drobniowski F, Paster B, Fortune F. The oral mucosal and salivary microbial community of Behcet's syndrome and recurrent aphthous stomatitis. *J Oral Microbiol*. 2015;7:27150.
53. Shen M, Fan D, Zang Y, Chen Y, Zhu K, Cai Z, Liu Y, Sun X, Liu J, Gong J. Neuroprotective effects of methane-rich saline on experimental acute carbon monoxide toxicity. *J Neurol Sci*. 2016;369:361–7.
54. Shimizu J, Kubota T, Takada E, Takai K, Fujiwara N, Arimitsu N, Ueda Y, Wakisaka S, Suzuki T, Suzuki N. Bifidobacteria abundance-featured gut microbiota compositional change in patients with Behcet's disease. *PLoS One*. 2016;11:e0153746.
55. Szabo C. Hydrogen sulphide and its therapeutic potential. *Nat Rev Drug Discov*. 2007;6:917–35.
56. Tada A, Senpuku H, Motozawa Y, Yoshihara A, Hanada N, Tanzawa H. Association between commensal bacteria and opportunistic pathogens in the dental plaque of elderly individuals. *Clin Microbiol Infect*. 2006;12:776–81.
57. Takeuchi M, Kastner DL, Remmers EF. The immunogenetics of Behcet's disease: a comprehensive review. *J Autoimmun*. 2015;64:137–48.
58. Tanabe S. The effect of probiotics and gut microbiota on Th17 cells. *Int Rev Immunol*. 2013;32:511–25.
59. Uchio E, Kijima M, Tanaka S, Ohno S. Suppression of experimental uveitis with monoclonal antibodies to ICAM-1 and LFA-1. *Invest Ophthalmol Vis Sci*. 1994;35:2626–31.
60. Wang HB, Wang PY, Wang X, Wan YL, Liu YC. Butyrate enhances intestinal epithelial barrier function via up-regulation of tight junction protein Claudin-1 transcription. *Dig Dis Sci*. 2012;57:3126–35.
61. Wang W, Chen L, Zhou R, Wang X, Song L, Huang S, Wang G, Xia B. Increased proportions of Bifidobacterium and the lactobacillus group and loss of butyrate-producing bacteria in inflammatory bowel disease. *J Clin Microbiol*. 2014;52:398–406.
62. Wen C, Zheng Z, Shao T, Liu L, Xie Z, Le Chatelier E, He Z, Zhong W, Fan Y, Zhang L, et al. Quantitative metagenomics reveals unique gut microbiome biomarkers in ankylosing spondylitis. *Genome Biol*. 2017;18:142.
63. Wu J, Wang R, Ye Z, Sun X, Chen Z, Xia F, Sun Q, Liu L. Protective effects of methane-rich saline on diabetic retinopathy via anti-inflammation in a streptozotocin-induced diabetic rat model. *Biochem Biophys Res Commun*. 2015;466:155–61.
64. Ye Z, Chen O, Zhang R, Nakao A, Fan D, Zhang T, Gu Z, Tao H, Sun X. Methane attenuates hepatic ischemia/reperfusion injury in rats through Antiapoptotic, anti-inflammatory, and Antioxidative actions. *Shock*. 2015;44:181–7.
65. Zeidan MJ, Saadoun D, Garrido M, Klatzmann D, Six A, Cacoub P. Behcet's disease pathophysiology: a contemporary review. *Auto Immun Highlights*. 2016;7:4. <https://doi.org/10.1007/s13317-016-0074-1>.
66. Zhang C, Zhang M, Wang S, Han R, Cao Y, Hua W, Mao Y, Zhang X, Pang X, Wei C, et al. Interactions between gut microbiota, host genetics and diet relevant to development of metabolic syndromes in mice. *ISME J*. 2010;4:232–41.
67. Zhang X, Li N, Shao H, Meng Y, Wang L, Wu Q, Yao Y, Li J, Bian J, Zhang Y, et al. Methane limit LPS-induced NF-kappaB/MAPKs signal in macrophages and suppress immune response in mice by enhancing PI3K/AKT/GSK-3beta-mediated IL-10 expression. *Sci Rep*. 2016;6:29359.
68. Zhang X, Zhang D, Jia H, Feng Q, Wang D, Liang D, Wu X, Li J, Tang L, Li Y, et al. The oral and gut microbiomes are perturbed in rheumatoid arthritis and partly normalized after treatment. *Nat Med*. 2015;21:895–905.
69. Zheng P, Zeng B, Zhou C, Liu M, Fang Z, Xu X, Zeng L, Chen J, Fan S, Du X, et al. Gut microbiome remodeling induces depressive-like behaviors through a pathway mediated by the host's metabolism. *Mol Psychiatry*. 2016;21:786–96.

**Ready to submit your research? Choose BMC and benefit from:**

- fast, convenient online submission
- thorough peer review by experienced researchers in your field
- rapid publication on acceptance
- support for research data, including large and complex data types
- gold Open Access which fosters wider collaboration and increased citations
- maximum visibility for your research: over 100M website views per year

**At BMC, research is always in progress.**

Learn more [biomedcentral.com/submissions](https://biomedcentral.com/submissions)

