

Supplementary materials for:

A Naphthalimide Fluorophore with Efficient Intramolecular PET and ICT Processes: Application in Molecular Logic

Haixia Wang,^{a,b} Haixia Wu,^a Lin Xue,^a Yan Shi,^a Xiyu Li*^a

*Key laboratory of colloid and interface chemistry, Ministry of Education, Department of
Chemistry, Shandong University, Jinan, China, 250100; Department of Chemistry, Henan Normal
University, Xinxiang, China, 453007*

Contents

Page S1: Title of the paper, authors along with the contents.

Page S2: Copy of the ¹H spectra of **2** and **3**.

Page S3: Copy of the ¹³C NMR spectrum of **3**.

Figure S1. ^1H NMR spectrum of **2** in CDCl_3

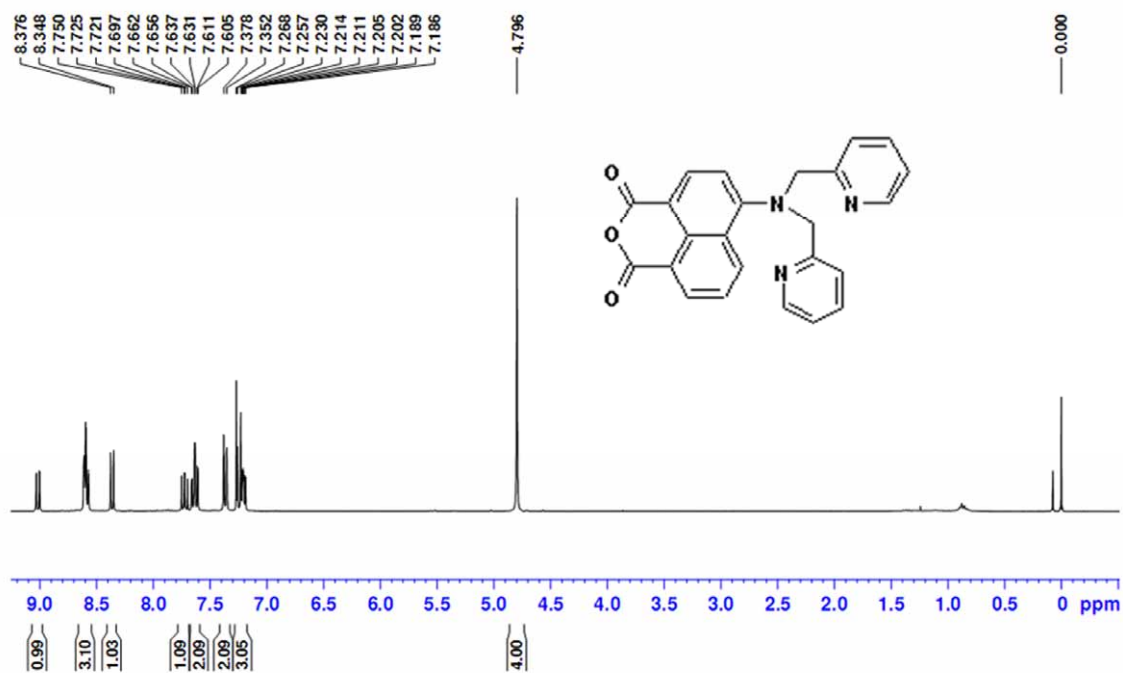


Figure S2. ^1H NMR spectrum of **3** in CDCl_3

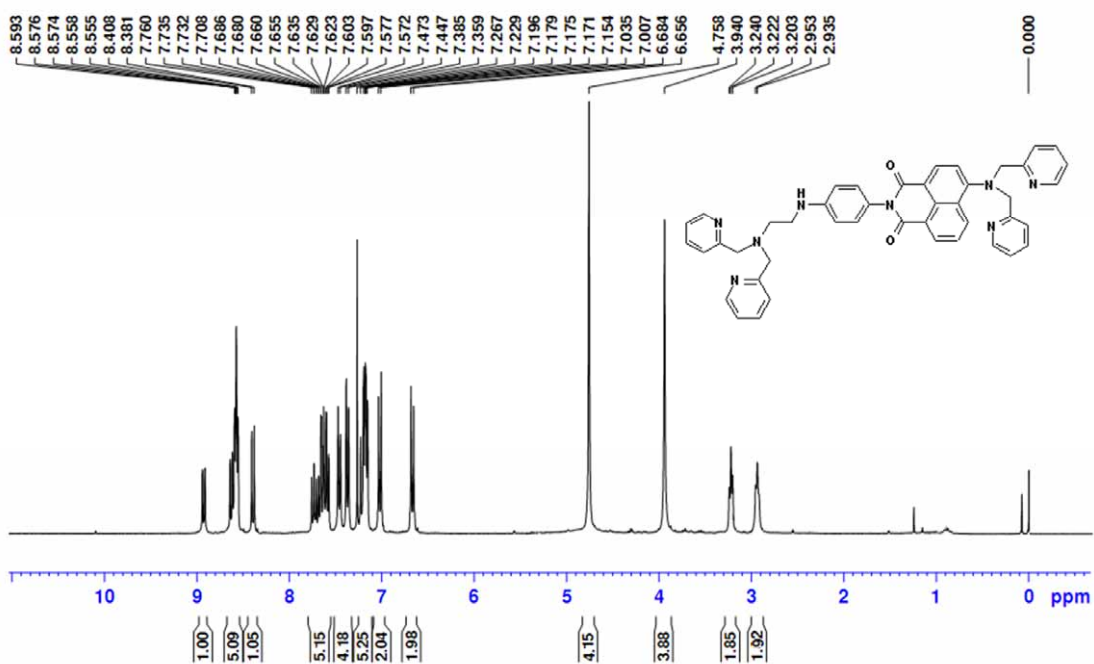


Figure S3. ^{13}C NMR spectrum of **3** in CDCl_3

