

# UC San Diego

## UC San Diego Previously Published Works

### Title

A new class of temporarily phenotypic enhancers identified by CRISPR/Cas9-mediated genetic screening.

### Permalink

<https://escholarship.org/uc/item/1mb5w37j>

### Journal

Genome research, 26(3)

### ISSN

1088-9051

### Authors

Diao, Yarui  
Li, Bin  
Meng, Zhipeng  
et al.

### Publication Date

2016-03-01

### DOI

10.1101/gr.197152.115

Peer reviewed

## Method

# A new class of temporarily phenotypic enhancers identified by CRISPR/Cas9-mediated genetic screening

Yarui Diao,<sup>1,7</sup> Bin Li,<sup>1</sup> Zhipeng Meng,<sup>2</sup> Inkyung Jung,<sup>1</sup> Ah Young Lee,<sup>1</sup> Jesse Dixon,<sup>1,3,4</sup> Lenka Maliskova,<sup>5</sup> Kun-liang Guan,<sup>2</sup> Yin Shen,<sup>5,7</sup> and Bing Ren<sup>1,6</sup>

<sup>1</sup>Ludwig Institute for Cancer Research, University of California, San Diego, La Jolla, California 92093, USA; <sup>2</sup>Department of Pharmacology and Moores Cancer Center, University of California, San Diego, La Jolla, California 92093, USA; <sup>3</sup>Medical Scientist Training Program, University of California, San Diego, La Jolla, California 92093, USA; <sup>4</sup>Biomedical Sciences Graduate Program, University of California, San Diego, La Jolla, California 92093, USA; <sup>5</sup>Institute for Human Genetics and Department of Neurology, University of California, San Francisco, San Francisco, California 94143, USA; <sup>6</sup>Department of Cellular and Molecular Medicine, Institute of Genomic Medicine and Moores Cancer Center, University of California, San Diego, La Jolla, California 92093, USA

With <2% of the human genome coding for proteins, a major challenge is to interpret the function of the noncoding DNA. Millions of regulatory sequences have been predicted in the human genome through analysis of DNA methylation, chromatin modification, hypersensitivity to nucleases, and transcription factor binding, but few have been shown to regulate transcription in their native contexts. We have developed a high-throughput CRISPR/Cas9-based genome-editing strategy and used it to interrogate 174 candidate regulatory sequences within the 1-Mbp *POU5F1* locus in human embryonic stem cells (hESCs). We identified two classical regulatory elements, including a promoter and a proximal enhancer, that are essential for *POU5F1* transcription in hESCs. Unexpectedly, we also discovered a new class of enhancers that contribute to *POU5F1* transcription in an unusual way: Disruption of such sequences led to a temporary loss of *POU5F1* transcription that is fully restored after a few rounds of cell division. These results demonstrate the utility of high-throughput screening for functional characterization of noncoding DNA and reveal a previously unrecognized layer of gene regulation in human cells.

[Supplemental material is available for this article.]

A remarkable feature of multicellular organisms is that they develop distinct sets of highly specialized cells using the same genetic blueprints. The developmental program in each species is governed by complex transcriptional regulatory circuitry composed of large numbers of transcription factors and *cis*-regulatory elements (Lee and Young 2013; Gorkin et al. 2014; Levine et al. 2014). Large-scale studies such as ENCODE and Roadmap Epigenomics projects have annotated millions of candidate *cis*-regulatory elements in the mammalian genome (Gerstein et al. 2012; Shen et al. 2012; Xie et al. 2013) based on biochemical signatures such as histone modification, transcriptional factor binding, and DNase I hypersensitivity. These putative regulatory regions harbor a disproportionately large number of sequence variants associated with human traits and diseases, leading to the notion that genetic lesions in *cis*-regulatory sequences contribute substantially to common human diseases (Maurano et al. 2012; Roadmap Epigenomics Consortium et al. 2015). A major bottleneck in advancing this hypothesis is a lack of high-throughput means to functionally characterize the large number of predicted *cis*-regulatory elements with regard to their contributions to target gene expression.

Traditional molecular genetic approaches have uncovered a small number of *cis*-regulatory sequences that confer spatiotemporal gene expression patterns to specific target genes in human cells

(Li et al. 2002), but more effective methods are needed for functional characterization of the large number of candidate enhancers annotated recently in the human genome (The ENCODE Project Consortium 2012; Roadmap Epigenomics Consortium et al. 2015). Transgenic mouse experiments used to validate enhancer activities *in vivo* (Visel et al. 2009) are limited to elements functioning in embryonic tissues, are of a modest throughput, and do not inform about the cognate target gene. High-throughput reporter assays in cultured cells, another strategy for validating tens of thousands of putative enhancers simultaneously (Melnikov et al. 2012; Patwardhan et al. 2012), test enhancer activities using heterologous promoters outside of their native chromatin context and do not inform on the target genes of the elements either.

In order to fully assess the contribution of a candidate enhancer to gene expression, it is necessary to delete or modify the element in its endogenous location. The bacterial clustered regularly interspaced short palindromic repeats (CRISPR)/Cas9 genome editing method has proven as a versatile tool for rapid alteration of genetic sequences in cells (Cong et al. 2013; Mali et al. 2013) with high specificity and efficiency (Jinek et al. 2012). CRISPR/Cas9 is capable of interrogating genome function for both transcribed genes and noncoding sequences. For example, deletion of a

<sup>7</sup>These authors contributed equally to this work.

Corresponding authors: [yin.shen@ucsf.edu](mailto:yin.shen@ucsf.edu), [biren@ucsd.edu](mailto:biren@ucsd.edu)

Article published online before print. Article, supplemental material, and publication date are at <http://www.genome.org/cgi/doi/10.1101/gr.197152.115>.

© 2016 Diao et al. This article is distributed exclusively by Cold Spring Harbor Laboratory Press for the first six months after the full-issue publication date (see <http://genome.cshlp.org/site/misc/terms.xhtml>). After six months, it is available under a Creative Commons License (Attribution-NonCommercial 4.0 International), as described at <http://creativecommons.org/licenses/by-nc/4.0/>.

candidate super-enhancer located 130 kb downstream from the *Sox2* gene resulted in a 90% reduction of *Sox2* transcription in mouse embryonic stem cells (Li et al. 2014; Zhou et al. 2014a). High-throughput CRISPR/Cas9 strategies have been developed for functional screening of protein coding genes essential for several physiological traits, such as cell vibration and intoxication in human cells (Shalem et al. 2014; Wang et al. 2014; Zhou et al. 2014b). Conceivably, this high-throughput CRISPR/Cas9 strategy can be used for large-scale identification and functional characterization of *cis*-regulatory elements. A recent study has identified the functional cores of human-specific erythroid enhancers by utilizing pooled single guide RNA (sgRNA) libraries targeted to three candidate enhancers of the *BCL11A* gene (Canver et al. 2015). Similarly, several enhancers were identified for *TP53* and *ESR1* genes in human BJ cells with this approach (Korkmaz et al. 2016).

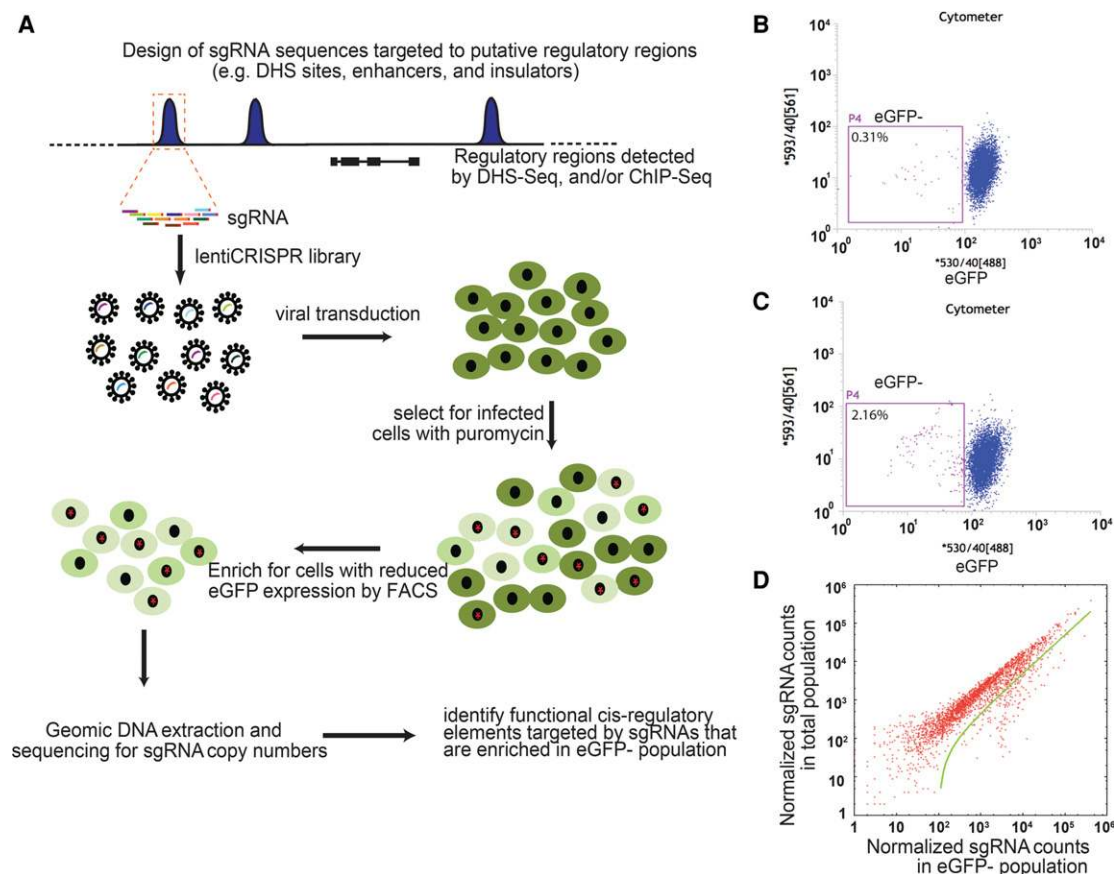
Here, we describe a large-scale CRISPR/Cas9-mediated functional screening of *cis*-regulatory elements in human genome. Application of this strategy to *POU5F1* in the human embryonic

stem cells (hESCs) uncovered both classical *cis*-regulatory elements and a class of noncanonical elements that regulate transcription in an unexpected manner.

## Results

### High-throughput screening for functional *cis*-regulatory elements in the *POU5F1* locus

To identify *cis*-regulatory elements involved in the transcriptional control of *POU5F1* we focused on 174 candidate *cis*-regulatory elements located within the gene's topological associated domain (TAD) (Fig. 1A; Dixon et al. 2012; Gerstein et al. 2012; Xie et al. 2013). Previous studies have shown that the human genome is partitioned into highly conserved and stable TADs (Dixon et al. 2012; Nora et al. 2012; Sexton and Cavalli 2015), within which the majority of the enhancer-promoter looping events occur (Jin et al. 2013). The TAD containing the *POU5F1* gene (Chr 6: 30,520,000–31,561,000) consists of 87 RefSeq annotated genes



**Figure 1.** Experimental design of a high-throughput CRISPR/Cas9-mediated screen for identifying *cis*-regulatory elements. (A) Workflow of lentiCRISPR screening strategy to identify functional regulatory elements. sgRNA library sequences were designed to create random mutations at 174 predicted regulatory regions (blue peaks) in the *POU5F1* TAD via nonhomologous end joining (NHEJ). sgRNA sequences were synthesized in an array-based oligo pool, cloned into the lentiCRISPR plasmid, and packaged into lentiviral libraries. We then used lentiviral libraries to infect H1 *POU5F1*-eGFP cells to generate random mutagenesis of the 174 candidate regions. hESCs with mutations at *cis*-regulatory elements affecting *POU5F1* expression can be identified as eGFP<sup>-</sup> cells. (B) Control H1 *POU5F1*-eGFP without lentiviral infection were dissociated into single cells and subjected to FACS analysis to determine the eGFP<sup>-</sup> (P4) gate for eGFP<sup>-</sup> population; 0.31% indicates the ratio of P4 in parental live singlets. (C,D) The H1 *POU5F1*-eGFP cells were infected with lentiCRISPR library by spin infection at low multiplicity of infection (MOI). Twenty-four hours after infection, the cells were cultured for 7 d under puromycin selection; for another 10 d, without puromycin. (C) The cells were subjected to FACS analyses. (2.16%) The ratio of P4 in parental population. (D) The eGFP<sup>-</sup> P4 population was collected by FACS sorting. Genomic DNA was isolated from P4 and nonsorted control cells, followed by PCR amplification of sgRNA sequence and deep sequencing. Scatter plot for sgRNA read counts in eGFP<sup>-</sup> cells compared with the control cells after LOESS normalization. Dots underneath the green line are sgRNAs with at least twofold enrichment in the eGFP<sup>-</sup> cells compared with the control population.

and 174 putative *cis*-regulatory elements with chromatin features of enhancers, CTCF binding, and/or DNase I hypersensitivity (Supplemental Table S1). Presently, it is unclear which candidate *cis*-regulatory elements are involved in *POU5F1* expression. Given the presence of many other genes within this TAD, we expect that only a small number of elements are involved in regulating *POU5F1* transcription.

We designed 1964 sgRNA sequences (Supplemental Table S2) targeting these putative *cis*-regulatory elements with an average of 11 sgRNA per element (Supplemental Fig. S1A). On average, each sgRNA could result in genetic disruption of the target locus with 30% probability under our experimental conditions (Li et al. 2014). Therefore, we expect >98% probability of introducing mutations to an element with 11 sgRNAs. As negative controls, we also designed 1415 ineffective sgRNA sequences that complement sequences in the 174 elements but lack a NGG/NCG protospacer adjacent motif (PAM) sequence necessary for effective targeting in vivo (Supplemental Table S2). Additionally, we also included 539 sgRNA to target regions bearing no evidence for regulatory function. We infected the H1 POU5F1-IRES-eGFP reporter line (Zwaka and Thomson 2003) with the lentiviral libraries expressing the above sgRNAs along with the Cas9 protein. The infected cells were selected in puromycin media for 7 d and expanded in regular media (Fig. 1A) before being sorted based on the eGFP signals, which reflects transcription levels of the cotranscribed *POU5F1* gene.

We next isolated cells with reduced eGFP signals (eGFP<sup>-</sup>) (Fig. 1B,C), amplified the sgRNA inserts from the integrated lentiviral sequences, and determined the enriched sgRNAs by deep sequencing. We computed the relative enrichment of each sgRNA in the eGFP<sup>-</sup> cells compared with the total cell population after LOESS normalization. We performed the experiment four times and identified a list of sgRNA sequences with at least twofold enrichment in the eGFP<sup>-</sup> population in each experiment (Fig. 1D; Supplemental Fig. S1B–D). Unexpectedly, many negative control sgRNAs, those lacking the PAM sequence, were tested positive in each experiment. These false hits were most likely due to the small fraction of eGFP<sup>-</sup> population (~0.3%) that naturally exists in the parental H1 POU5F1-eGFP line (Fig. 1B). To eliminate these false positives, we required that a positive *cis*-regulatory element should have at least two distinct sgRNAs enriched by twofold or more in the eGFP<sup>-</sup> population in at least three out of the four independent experiments (Supplemental Table S3; Supplemental Fig. S2A). By use of this criterion, no negative control sgRNA passed the filter, while six *cis*-regulatory elements were identified as positives (Fig. 2A). These elements are located with various linear genomic distances from the *POU5F1* transcription start site (TSS), ranging from -1.4 to 491 kbp (Fig. 2A,B). Among these positive hits are the *POU5F1* promoter and a proximal enhancer (DHS\_115) located 1.4 kbp upstream of the TSS, confirming the essential role of *POU5F1* promoter in controlling gene expression, and also providing additional functional evidence for the *POU5F1* proximal enhancer (Chia et al. 2010; Xie et al. 2013).

Next, we tested whether the identified elements could function as enhancers in the classical reporter assays (DHS\_37, CTCF\_38, DHS\_65, DHS\_108, and DHS\_115). We cloned genomic fragments corresponding to each element into a reporter plasmid containing the 360-bp *POU5F1* core promoter region and a luciferase reporter gene. All elements, with the exception of DHS\_65, exhibited significant enhancer activities in the H1 cells compared with the control plasmid containing only the *POU5F1* core promoter sequence (Fig. 2C). DHS\_115, located 1.4 kb upstream of *POU5F1*, activated the reporter more than 26-fold, and this activity

can be further boosted by DHS\_37 when tested in combination (Supplemental Fig. S3A). These results suggest that most of the elements testing positive in the CRISPR/Cas9 sgRNA screening may function as enhancers.

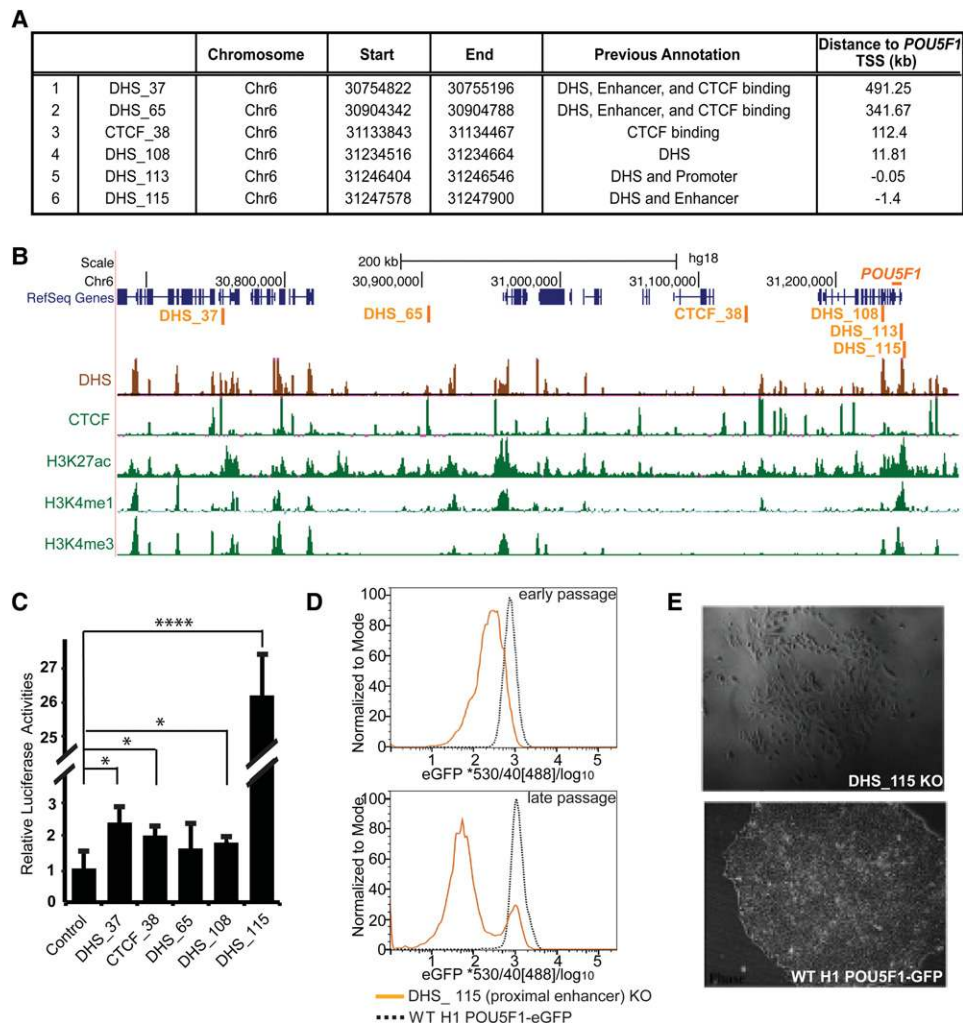
Consistent with the results from the reporter assay, a cell clone with mutations at DHS\_115 (one allele with 13-bp deletion and the other allele with 4-bp substitution of the 17-bp original sequences) exhibited reduced eGFP levels, which decreased further in additional passages (Fig. 2D; Supplemental Fig. S3B). Cells with mutations at this proximal enhancer could not be expanded as they quickly differentiated (Fig. 2E), suggesting that DHS\_115 is a major regulator of *POU5F1* expression in hESCs. Of note, this region is within a previously defined hESC-specific proximal enhancer region (Chr 6: 31,247,052–31,248,218) that controls *POU5F1* expression in primed hESCs (Gafni et al. 2013).

### Temporary phenotype after deletion of DHS\_37, DHS\_65, and DHS\_108

Of the remaining four distal regulatory regions, DHS\_37, CTCF\_38, DHS\_65, and DHS\_108, three (DHS\_37, DHS\_65 and DHS\_108) display strong DNase I hypersensitivity in hESCs, and we decided to further study their functionalities. We deleted these elements individually in the H1 POU5F1-eGFP cells with a pair of sgRNAs flanking each region. In contrast to cells with mutations at DHS\_115, cells with biallelic deletion of DHS\_37, DHS\_65, or DHS\_108 do not show any growth defects. In addition, all biallelic KO clones exhibit temporary loss of *POU5F1* transcription in a subpopulation of cells: Reduced *POU5F1* transcription during initial culturing, indicated by decreased eGFP signals, was seen in a variable fraction of each clonal population (Fig. 3A; Supplemental Fig. S4A). Interestingly, after two additional passages in culture, each clonal population reverted to wild-type *POU5F1* expression (Supplemental Fig. S4B). To confirm the transient nature of the *POU5F1* down-regulation in these cells, we used hESC-specific markers SSEA4 and Tra1-60 to isolate the SSEA4<sup>+</sup>/Tra1-60<sup>+</sup>/eGFP<sup>-</sup> cell population (Supplemental Fig. S5) and found that this eGFP<sup>-</sup> pluripotent hESC population rapidly regained eGFP signals after a few cell divisions in culture (Fig. 3B). Furthermore, loss of two or even all three of these elements in hESCs led to transient reduction of eGFP levels that was quickly regained upon additional passages (Fig. 3D,E; Supplemental Fig. S4A). This observation confirmed the involvement of these elements in regulating *POU5F1* expression in hESCs. More intriguingly, the existence of both eGFP<sup>+</sup> and eGFP<sup>-</sup> cells from the same genotype indicated that deletion of these elements produced heterogeneous effects (Fig. 3A).

The transient loss of *POU5F1*-eGFP expression in the above clones is surprising. In order to rule out the possibility that contaminating parental POU5F1-eGFP hESCs outgrew mutant clones over time, we followed the growth and eGFP signals of single-cell clones with fluorescence microscopy over a period of 3 d after clonal isolation and expansion post transfection with CRISPR/Cas9 genome editing vectors (Fig. 3C). DHS\_37, DHS\_65, and DHS\_108 KO clones (-/-) gradually gained eGFP expression, while the wild-type clones displayed constant eGFP signals. Therefore, the temporary, but detectable, loss of eGFP signals in the above clones could not be due to contaminant parental POU5F1-eGFP hESCs.

The eGFP<sup>-</sup> cells are positive for the hESC marks SSEA4 and Tra1-60, indicating these cells can maintain pluripotency even with the transient loss of *POU5F1* expression. Additionally, despite the reduced expression level of *POU5F1*, these cells showed wild-type expression levels for other stem markers, including



**Figure 2.** Characterization of *cis*-regulatory elements identified near *POU5F1*. (A) A list of regulatory elements regulating *POU5F1* transcription identified from the lentiCRISPR screening with coordinates (hg18). Each element was identified by at least two distinct sgRNAs enriched by twofold or more in the eGFP<sup>-</sup> population in at least three out of the four independent screenings. (B) Genome browser snapshot shows the location and epigenetic environment for each element in H1 hESCs. (C) Reporter assays for the six identified *cis*-regulatory elements. H1 hESC cells were transfected with various luciferase reporter plasmid as indicated. Two days post transfection, cells were lysed and subjected to luciferase reporter assays. All tested elements are cloned into the control reporter plasmid containing the 360-bp *POU5F1* minimal promoter sequence driving reporter gene expression. DHS\_115 exhibits the highest enhancer activities ([\*\*\*\*]  $P < 10^{-9}$ ), while the other four elements show either minimal (DHS\_37, CTCF\_28, and DHS\_108 with [\*]  $P < 0.05$ ) or no enhancer activities (DHS\_65 with  $P = 0.27$ ) compared with the control reporter plasmid containing *POU5F1* promoter only. (D) FACS analysis showed that the DHS\_115 biallelic mutant hESCs (orange line) gradually lose *POU5F1*-eGFP expression in culture over time compared with parental H1 *POU5F1*-eGFP line (dash line). (E) Phase images of hESCs with biallelic mutations at DHS\_115 locus (*top*) and wild-type hESCs (*bottom*). Deletions of DHS\_115 sequences lead hESCs to lose pluripotency and become differentiated in the culture (*top*).

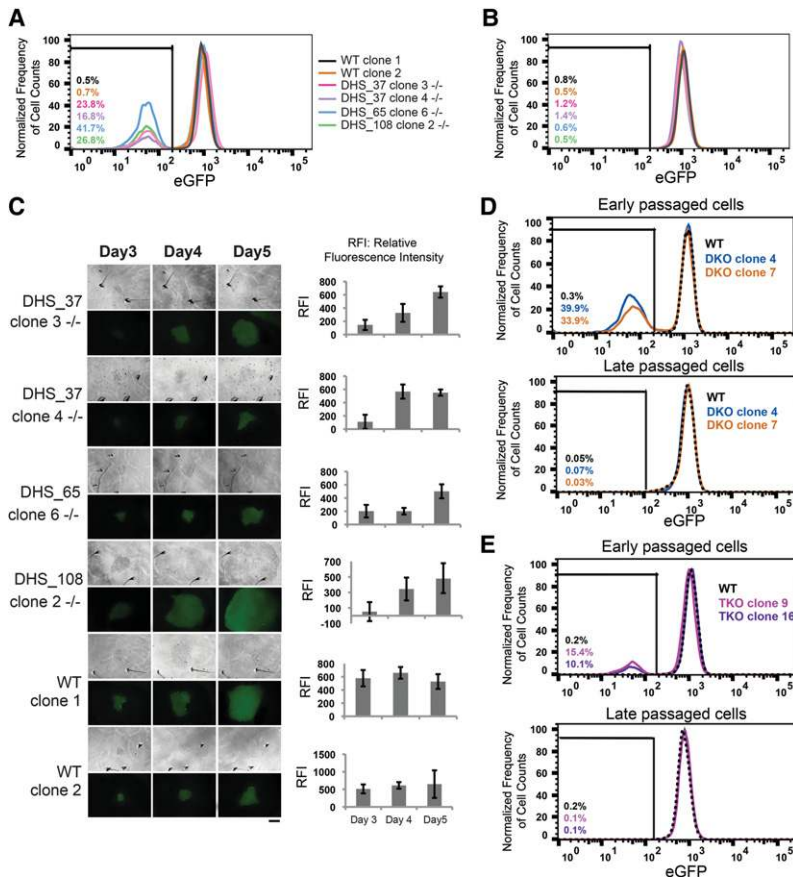
*NANOG* and *SOX2* (Supplemental Fig. S6A). ChIP-seq analysis of H3K27ac in two distinct DHS37<sup>-/-</sup> clones revealed little change in active chromatin landscape compared with the parental cells (Supplemental Fig. S6B). Furthermore, the recovered eGFP<sup>+</sup> cells have no obvious defects for early differentiation as the embryoid bodies (EBs) derived from these cells expressed similar levels of marker genes for three germ layers (endoderm-specific marker *AFP*, ectoderm-specific marker *SOX1*, and mesoderm-specific marker T brachyury transcription factor) (Supplemental Fig. S6C).

#### DHS\_65 and DHS\_108 act in *cis* to regulate *POU5F1* expression

DHS\_37, DHS\_65, and DHS\_108 sequences overlapped with protein coding genes or lncRNA, namely, *PPP1R18*, *LINC00243*, and *TCF19*, respectively (Supplemental Fig. S4A). Both *PPP1R18* and

*TCF19* are transcribed in H1 cells (Djebali et al. 2012). To rule out the possibility that *POU5F1* reduction may be due to disruption of their gene products, we generated cell clones with monoallelic deletion of these elements and examined if genetic disruption at these loci would affect *POU5F1* transcription in *cis* (on the same allele) but not in *trans* (from the homologous chromosome). If the phenotype of transient loss of *POU5F1*-eGFP expression is due to indirect effects such as mutations in other gene products, we would expect to see reduced eGFP no matter on which allele the deletion of those elements occurs. On the other hand, if these elements act in *cis* to modulate *POU5F1* transcription, we should observe the transient down-regulation of eGFP expression only in mutants bearing deletion on that allele.

To carry out this analysis, we took advantage of the recently phased H1 genome (Selvaraj et al. 2013; Dixon et al. 2015) and



**Figure 3.** Characterization of Temp enhancers. (A–C) Biallelic clones with single deletions at DHS\_37, DHS\_65, and DHS\_108 loci were generated by cotransfection of a pair of pX330 plasmids expressing sgRNAs flanking each locus. Each clone was cultured for 2 wk before their *POU5F1* expression levels were assessed using FACS analysis of eGFP in early passages (A) and late passages (B). (A) In early passages, biallelic mutant clones showed heterogeneous eGFP expression levels. (B) eGFP<sup>+</sup> cells isolated from (A) restored eGFP level. (C) Colony image tracing experiments showed that mutant clones gradually regain eGFP expression in culture over time. Bar graph represents average relative fluorescence intensity (RFI) for each colony quantified by ImageJ. Scale bar, 200  $\mu$ m. (D) DHS\_37 and DHS\_108 (–/–, –/–) double knockout (DKO) clones were generated by two rounds of deletion of each region by CRISPR/Cas9 and confirmed by Sanger sequencing. DKO cells exhibit transient loss of eGFP expression that can be recovered after long-term culture. (E) DHS\_37, DHS\_65, and DHS\_108 (–/–, –/–, –/–) triple knockout (TKO) clones were generated by three rounds of deletion of regions by CRISPR/Cas9 and confirmed by Sanger sequencing. TKO cells exhibit transient loss of eGFP expression that can be recovered after long-term culture.

identified the haplotype of the eGFP allele (P1) and wild-type allele (P2) by targeted sequencing of the region that contains multiple SNPs across the *POU5F1* gene (Supplemental Fig. S7A). We then inferred the allelic information for DHS\_65 and DHS\_108 based on the phased SNPs in each element. We were able to distinguish clones with a deletion on the eGFP-knockin allele versus the clones with a deletion in the other allele by linking SNPs near DHS\_65 and DHS\_108 to the SNPs on the eGFP allele. We obtained two heterozygous clones for the DHS\_65 KO (clone 8<sup>+/–</sup> with deletion on P1 allele and clone 7<sup>+/–</sup> with deletion on P2 allele) and three heterozygous clones for the DHS\_108 KO (clone 1<sup>+/–</sup> and clone 6<sup>+/–</sup> with deletions on P1 allele and clone 4<sup>+/–</sup> with deletion on P2 allele) (Supplemental Fig. S7B,C). We followed their *POU5F1*-eGFP levels from initial isolation over the period of a week and observed only clones with mutations on the P1 allele exhibited a transient loss of eGFP expression. In contrast, the mutant clones (DHS\_65 clone 7 and DHS\_108 clone 4) with deletion on the P2 allele showed normal levels of eGFP expression over this period

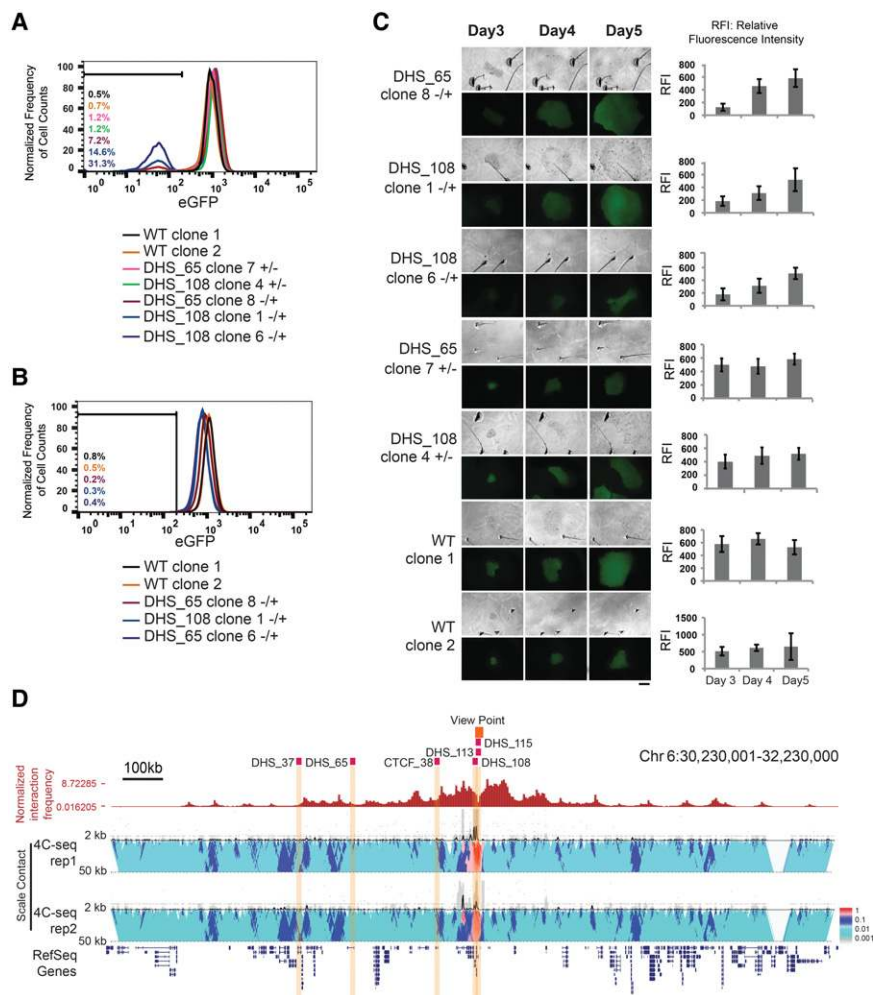
(Fig. 4A). Additionally, cells with the P1 deletion (–/+) regained *POU5F1*-eGFP expression upon additional passages in culture (Fig. 4B,C). Those results support our model that DHS\_65 and DHS\_108 act in *cis* to regulate *POU5F1* transcription.

Taken together, the above results indicate that DHS\_65, DHS\_108, and possibly DHS\_37 are a novel class of *cis*-regulatory elements that exert detectable and temporary phenotypes on target gene expression. The main feature of these noncanonical elements is that their disruption leads to a temporary loss of target gene expression. With comparison to the classical enhancers such as DHS\_115, these temporarily phenotypic (“Temp”) enhancers show weak enhancer activity in reporter assays (Fig. 2C). However, they display other common characteristics of enhancers, such as chromatin accessibility, and the requirement for gene activation in vivo. For example, DHS\_108 region is enriched for RNA polymerase II ChIP-seq signals (The ENCODE Project Consortium 2012), while three other distal elements (DHS\_37, DHS\_65, and CTCF\_38) are associated with multiple transcription factors that are highly expressed in hESCs such as TEAD4, YY1, and SIN3A (The ENCODE Project Consortium 2012).

RAD21, a subunit of the cohesin complex, is also found at DHS\_37, DHS\_65, and DHS\_108 (Supplemental Fig. S8; The ENCODE Project Consortium 2012). Since the cohesin complex has been implicated in mediating chromatin interactions between enhancers and promoters (Kagey et al. 2010; Zuin et al. 2014), we hypothesized that chromatin loops may exist between these three elements and the *POU5F1* promoter. We first analyzed previously published Hi-C data for H1 cells (Dixon et al. 2012) and examined the chromatin interactions centered at the *POU5F1* promoter. We found that all Temp enhancers, namely, DHS\_37, DHS\_65, and DHS\_108, are located near regions that show high levels of chromatin interactions with the *POU5F1* promoter. To confirm this observation, we also performed 4C-seq experiments in H1 *POU5F1*-eGFP cells. Again, we found these elements near regions displaying high and consistent interaction frequencies with the *POU5F1* promoter (Fig. 4D). Taken together, our results suggest that Temp enhancers may be involved in local higher-order chromatin structure to regulate *POU5F1* expression, a hypothesis that requires additional in depth investigation in the future.

## Discussion

In the current study, we describe a high-throughput CRISPR/Cas9 screening approach for functional analysis of transcriptional regulatory sequences. Applying it to 174 candidate *cis*-regulatory



**Figure 4.** DHS\_65 and DHS\_108 regulate *POU5F1* in cis. (A–C) Cell clones harboring monoallelic deletion of DHS\_65 and DHS\_108 were generated by cotransfection of H1 *POU5F1*-eGFP cells with a pair of pX330 plasmids expressing sgRNAs flanking each locus. P1 is the eGFP-containing allele, while P2 is the non-eGFP allele according to the SNP phasing information in the H1 genome (see Methods; Supplemental Fig. S7). Genotype information for mutant clones is indicated by + (WT) or – (KO) labeling in the order of P1/P2. FACS analysis was performed for the parental cell line and monoallelic mutant clones for DHS\_65 and DHS\_108 at early passages (A) and late passages (B). Note only the P1 allele (eGFP allele) deletion impaired eGFP expression in a subpopulation of cells for each clone, while the eGFP levels in the clones for P2 allele (non-eGFP allele) deletion were not affected. The GFP– population sorted from clones in A regained eGFP signals comparable with the wild-type clones in B. (C) Time-course colony image tracing experiments showed monoallelic mutant clones with P1 allele deletion gradually regain eGFP expression in culture, while mutant clones with P2 allele deletion and WT clones exhibit constant eGFP signal levels. Bar graphs represent RFI for each colony quantified by ImageJ. Scale bar, 200  $\mu$ m. (D) A genome browser snapshot for chromatin interaction frequencies originating from the *POU5F1* promoter. (Top) Normalized chromatin interaction counts in a published Hi-C data set (Dixon et al. 2012). (Bottom) Contact profiles at the *POU5F1* locus from two replicates of 4C-seq with the *POU5F1* promoter as the bait (highlighted in dark orange). Contact profiles (curves) indicate the frequencies of chromatin interactions, while the probability of interactions is quantified in a multiscale analysis as previously described (van de Werken et al. 2012). Five million H1 *POU5F1*-eGFP cells were used for each 4C-seq experiment. 4C-seq data were processed with 4C-seq pipeline (van de Werken et al. 2012).

elements in the 1-Mbp *POU5F1* locus, we identified not only classical regulatory elements but also a class of noncanonical enhancers, termed Temp enhancers. The Temp enhancers carry the following properties: (1) They reside in the open chromatin regions, and (2) their loss leads to temporary reduction in transcription of the target gene. Similar to shadow enhancers (Perry et al. 2010), these elements show weak enhancer activities in vitro reporter assays and are located distal from their cognate target

promoter. However, they differ from shadow enhancers in their transitory characteristics in gene regulation. The high-throughput screening described in the current study can pick up such elements because the genetic labeling of *POU5F1* with the eGFP reporter allowed isolation of single cells with transient reduction in *POU5F1* transcription by FACS.

Functions of known *cis*-regulatory elements are generally classified based on their roles in driving or influencing transcription at a population level in specific cell types. For example, promoters are required for initiation of transcription, while enhancers can drive transcription from a heterologous promoter independent of relative locations. Insulators, on the other hand, block transcriptional activation when inserted in between an enhancer and a promoter. Loss of these elements typically leads to stable and permanent effects on transcription. In contrast to these well-characterized *cis*-regulatory elements, the Temp enhancers reported in the current study exhibit temporal and reversible defects in transcription. While there is a requirement for the Temp enhancers in expression, evident in the early stage of sequence disruption, the cell can quickly adapt to loss of the sequence after a few cell divisions, suggesting a high degree of robustness of the transcriptional regulatory process. On the other hand, Temp enhancers are conserved in the mouse *Pou5f1* locus with the same genomic distributions as in human *POU5F1* locus and contain features of potential regulatory activities marked by histone marks such as H3K4me3, H3K9ac, or H3K27ac (Supplemental Fig. S9).

How do Temp enhancers contribute to transcription? We can envision at least three models for their action: First, activation of a gene by the Temp enhancers may be needed only transiently at the initiation phase of transcription. Such a “hit-and-run” model was previously proposed for the immunoglobulin heavy-chain enhancer but was subsequently disputed upon further experimentation (Wabl and Burrows 1984; Schaffner 1988; Porton et al. 1990). Second, the Temp enhancers may play a role in local chromatin organization, by facilitating or stabilizing enhancer and promoter contacts, in a similar way as CTCF binding sites at the super-enhancer domains (Downen et al. 2014; Narendra et al. 2015). Indeed, a recent study showed that scaffold associated regions (SARs) are enriched near actively transcribed genes (Keaton et al. 2011). The elements discovered in this study could be SARs supporting *POU5F1* expression by maintaining a proper

chromatin structure. Upon disruption of a stable transcriptional state due to loss of an existing SAR, other SARs can replace the previous one in mutant cells to re-establish or maintain the chromatin structure. In a static state, when the transcriptional network in a cell population has been established, only a portion of such elements that are in use can be detected by our screening method. Detection of more elements will require additional studies in populations of cells at different transcriptional states. Third, Temp enhancers may facilitate the movement of *POU5F1* to remote transcription factories for activation. RNA polymerases have been shown to exist in discrete loci in the nuclear space, which are termed transcription factories (Jackson et al. 1993). It has been posited that genes need to move into these nuclear space in order for RNA synthesis to take place. We speculate that Temp enhancers may play a role in the maintenance of association between the gene and the factories. Regardless of which model may explain the nature of the Temp enhancers, our results highlight the importance of analyzing *cis*-regulatory element function in a temporally sensitive manner. Previous studies examining dynamics of transcriptional control of integrated transgenes after disruption of a canonical enhancer have provided deep insights into mechanisms of enhancer function, suggesting that enhancers increase the likelihood of gene activation rather than the expression level (Magis et al. 1996; Walters et al. 1996; Francastel et al. 1999). The Temp enhancers, although demonstrating a temporary phenotype in gene expression instead of more long-lasting effects typical of canonical enhancers, may function similarly by increasing the probability of transcription of the targeted gene, possibly with the help of a strong proximal enhancer.

Our study may not identify all regulatory elements that could play a compensatory role in supporting *POU5F1* expression. For example, *cis* elements that lack canonical epigenetic features in hESCs used for their annotations would not be targeted by our sgRNA design. A better strategy will be to delete all regions in the *POU5F1* TAD regardless of their epigenetic status utilizing the dual sgRNA approach. From the number of positive elements that we detected, we expect that Temp enhancers to be abundant in the human genome. This approach can be applied to identify regulatory sequences for any gene provided that a protein tag could be engineered into the gene. It would be interesting to utilize this approach to identify regulatory elements necessary to fine-tune the expression levels of broadly expressed genes in multiple cell types.

## Methods

### Design of sgRNA in the putative regulatory regions in *POU5F1* locus

We extracted sequence information of mapped DNase I hypersensitivity (DHS) sites, CTCF binding sites, and predicted enhancers in H1 cells from the 1-Mb TAD containing *POU5F1* (Chr 6: 30,520,000–31,561,000) according to previous studies (Gerstein et al. 2012; Xie et al. 2013). To design sgRNAs, we first identified all potential 20-bp sequences followed by the PAM sequences (NGG) in those regions. Second, in order to maximize the Cas9 target specificity, we narrowed down the list by ensuring that the guide sequences together with the PAM sequences didn't map to other genomic loci when three mismatches are allowed. The control sgRNA sequences were designed so that they are still within the 1-Mb TAD but no overlap with putative regulatory regions. In addition, we incorporated an additional 1415 ineffective sgRNA sequences within the putative regulatory regions, which are not

followed by PAM sequences. These ineffective sgRNA sequences served as negative controls. The sgRNA oligo library was synthesized by LC Sciences. The sequences of the sgRNA are described in Supplemental Table S1.

### Cell culture

The *POU5F1*-eGFP H1 hESC line was purchased from WiCell and described previously (Zwaka and Thomson 2003). The cells were cultured on Matrigel-coated (Corning, catalog no. 354277) plates, maintained in Essential 8 medium (Life Technologies, catalog no. A1517001), and passaged by Accutase (Stemcell Technologies, catalog no. A1517001) with 10  $\mu$ M ROCK inhibitor Y-27632 (Stemcell Technologies, catalog no. 72302) supplement.

### Lentiviral CRISPR/Cas9 screening

Briefly, the screening was performed following previous protocol described by Shalem et al. (2014) with minor modifications. For detailed information, see the Supplemental Material.

### CRISPR/Cas9 gRNA sequence data analysis

A total of eight short-sequence-reads data sets were generated from four independent experiments and analyzed together for the present study. YD36 corresponds to eGFP<sup>-</sup> population 14 d post infection. YD37 corresponds to the total, unsorted population from the same experiment, and is used as the control for YD36. YD38 corresponds to eGFP<sup>-</sup> population 10 d post infection from a second replicate, and YD39 is the total, unsorted population control. YD44 corresponds to the eGFP<sup>-</sup> population 10 d post infection from the third replicate, and YD45 is the total, unsorted population. YD46 correspond to the eGFP<sup>-</sup> population 10 d post infection from the fourth replicate, and YD47 is the total, unsorted population. The sequence read lengths of each data set are 50 bp. (See Supplemental Table S3 for details.)

The sequence reads were first mapped to sgRNA library based on exact match; then the frequencies of each sgRNA in each sample are normalized using the LOESS normalization method implemented in R version 3.0.2 (R Core Team 2013). A subsequence with length of either 20 or 21, with the prefix of the sequence matching ACACC and suffix matching GTTTT, is extracted and compared to the whole length of the sgRNA. For each pair of eGFP<sup>-</sup> population and the control, the sgRNA frequencies in control samples are normalized using the standard LOESS normalization method; the normalized control sgRNA frequencies are then used as the expected frequencies to compare with sgRNA frequencies from the eGFP<sup>-</sup> population sample. The sgRNAs with a minimum of 50 reads in either eGFP<sup>-</sup> population or control and also with a minimum of twofold enrichment are identified as positive hits. To further identify *cis*-regulatory elements involved in *POU5F1* expression, we determined the *cis*-regulatory elements with two positive sgRNA hits in at least three replicates. By use of this criterion, none of the negative control sgRNAs passed the filter (Supplemental Fig. S2).

### Transfection and luciferase reporter assay

Luciferase assays were conducted as previously described (Heintzman et al. 2007). For detailed information, see the Supplemental Material.

### Knockout of *POU5F1*-eGFP *cis*-regulatory elements with CRISPR/Cas9 system

CRISPR/Cas9 constructs targeting DHS\_37, DHS\_65, and DHS\_108 was made following a protocol described earlier (Cong et al. 2013). The ssDNA oligo pairs (F and R for each DHS site) are listed



below and cloned into the pX330-U6-Chimeric\_BB-CBh-hSpCas9 (Addgene plasmid no. 42230) vector: DHS\_37\_5'\_F, caccGAAA TCACAGGGTGGGTCGAC; DHS\_37\_5'\_R, aaacGTCGACCCACCC TGTGATTTTC; DHS\_37\_3'\_F, caccGCCCTCCGAGAGTTCGGTAC; DHS\_37\_3'\_R, aaacGTACCGAAGTCTCGGAGGGGC; DHS\_65\_5'\_F, caccGCCAACTGTACAGGCGCCCC; DHS\_65\_5'\_R, aaacGGGGC GCCTGTACAAGTTGGC; DHS\_65\_3'\_F, caccGTGAATCTTGAT CCCCATCGC; DHS\_65\_3'\_R, aaacGCGATGGGGATCAAGATTC AC; DHS\_108\_5'\_F, caccGCGCGGGTAGATCCGAAACG; DHS\_108\_5'\_R, aaacCGTTTCGGATCTACCCGCGC; DHS\_108\_3'\_F, caccGCATAACTGGTTGAACCTCCG; and DHS\_108\_5'\_R, aaacCGAGTTCAACCAGTTATGC.

After validating the sgRNA sequences by Sanger sequencing, a pair of plasmids targeting 5'- and 3'- boundary of the same element was mixed at 1:1 ratio and cotransfected with plasmid expressing mCherry into POU5F1-eGFP cells by hESCs Nucleofector Kit 2 (Lonzo, catalog no. VPH-5022) according to the manufacturer's instruction. Three days post transfection, the cells were sorted into a Matrigel-coated 96-well plate (single cell per well) in E8 media supplemented with 10  $\mu$ M ROCK inhibitor. After 10 to 12 d recovering, the viable single cell in each well would form a visible single colony. These colonies were defined as P1 passage described in this study. The P1 colonies were then transferred to 24-well plates for expanding, and they were defined as P2 passage. When the P2 cells were confluent in the 24-well plate, the cells were dissociated and analyzed or sorted using BD FACSAria II. A subpopulation of P2 cells was collected and treated with QuickExtract DNA extraction solution (Epicentre, catalog no. QE0905T), followed by genotyping PCR, TOPO cloning (Life Technologies, catalog no. K2800-20), and Sanger sequencing for sequence verification. The genotyping experiment was conducted as previously described (Shalem et al. 2014) with the following primers: DHS\_37\_GT\_F, GCATGAGCCACAGGAGGTAG; DHS\_37\_GT\_R, CGCTTCTCT CCCTCAACC; DHS\_65\_GT\_F, GAGGCAGCATCTAACCTTGC; DHS\_65\_GT\_R, TCCTTACCATGTGGCATTG; DHS\_108\_GT\_F, GAATCCGAAGGAGGGGTAG; DHS\_108\_GT\_R, CGTGCAATACG AACACATCA; DHS\_115\_GT\_F, GATGCTAGGGAATTCGATCCCT; and DHS\_115\_GT\_R, ATCCGAGCTCTGCAGGATTGCT.

### FACS sorting and analysis

The wild-type and mutant POU5F1-eGFP cells were dissociated with Accutase and stained with APC-SSEA-4 (1:100, R&D Systems, catalog no. FAB1435) and PE-Tra1-60 (1:50, eBioscience, catalog no. 12-8863-82) for 30 min, followed by FACS sorting and analysis. The FACS data were analyzed using FlowJo software.

### Cell imaging

Fluorescence microscopy was performed with a LEICA DM microscope, and a LEICA DFC400 digital camera captured the images. The images were taken under 10 $\times$  objective lens with the following setting: exposure time 10 sec, gain 6 $\times$ , saturation 3.00, and gamma 2.0. The fluorescent images were quantified with ImageJ software.

### HI POU5F1-eGFP phasing

Determination of the haplotypes containing the targeted eGFP fusion and the nontargeted native *POU5F1* allele was performed as follows. As the homology arms of the targeting vector contain DNA not native to the H1 genome, only sequencing from the nontargeted allele can provide useful information in terms of the haplotype of the targeted and nontargeted alleles. Therefore, we designed primers that would span from a common locus in the 5' region of the *POU5F1* gene to the 3' end of the *POU5F1* gene, downstream to where the fusion with the eGFP transgene would

occur. Therefore, these primers will only amplify the native, nontargeted allele. TOPO cloning and Sanger sequencing of the PCR product identified that five out of five possible genotypes were derived from the P2 allele in four out of four independent clones, indicating that the P2 allele contains the native locus, and by deduction, the P1 allele must contain the targeted eGFP transgene: *POU5F1* 5' common primer, AACAGGGAATGGGTGAATGA; *POU5F1* 3' specific primer, TTTAAGTGTGTCTATCTACTGTGTC.

### Data access

The sequencing data from this study have been submitted to the NCBI Gene Expression Omnibus (GEO; <http://www.ncbi.nlm.nih.gov/geo/>) under accession number GSE75450.

### Acknowledgments

We thank Yunjiang Qiu, Zhen Ye, and Samantha Kuan for technical assistance. This work is supported by National Institutes of Health (NIH) (2P50 GM085764) and by the Ludwig Institute for Cancer Research (to B.R.). Y.D. is supported by the Human Frontier Science Program Long Term Fellowship.

*Author contributions:* Y.S., Y.D., and B.R. designed research; Y.S., Y.D., A.Y.L., J.D., and L.M. performed experiments; Y.S., Y.D., B.L., and I.J. analyzed data; Z.M. and K.G. packaged lentiCRISPR library; and Y.S., Y.D., and B.R. wrote the paper.

### References

- Canver MC, Smith EC, Sher F, Pinello L, Sanjana NE, Shalem O, Chen DD, Schupp PG, Vinjamur DS, Garcia SP, et al. 2015. *BCL11A* enhancer dissection by Cas9-mediated *in situ* saturating mutagenesis. *Nature* **527**: 192–197.
- Chia NY, Chan YS, Feng B, Lu X, Orlov YL, Moreau D, Kumar P, Yang L, Jiang J, Lau MS, et al. 2010. A genome-wide RNAi screen reveals determinants of human embryonic stem cell identity. *Nature* **468**: 316–320.
- Cong L, Ran FA, Cox D, Lin S, Barretto R, Habib N, Hsu PD, Wu X, Jiang W, Marraffini LA, et al. 2013. Multiplex genome engineering using CRISPR/Cas systems. *Science* **339**: 819–823.
- Dixon JR, Selvaraj S, Yue F, Kim A, Li Y, Shen Y, Hu M, Liu JS, Ren B. 2012. Topological domains in mammalian genomes identified by analysis of chromatin interactions. *Nature* **485**: 376–380.
- Dixon JR, Jung I, Selvaraj S, Shen Y, Antosiewicz-Bourget JE, Lee AY, Ye Z, Kim A, Rajagopal N, Xie W, et al. 2015. Chromatin architecture reorganization during stem cell differentiation. *Nature* **518**: 331–336.
- Djebali S, Davis CA, Merkel A, Dobin A, Lassmann T, Mortazavi A, Tanzer A, Lagarde J, Lin W, Schlesinger F, et al. 2012. Landscape of transcription in human cells. *Nature* **489**: 101–108.
- Downen JM, Fan ZP, Hnisz D, Ren G, Abraham BJ, Zhang LN, Weintraub AS, Schuijers J, Lee TI, Zhao K, et al. 2014. Control of cell identity genes occurs in insulated neighborhoods in mammalian chromosomes. *Cell* **159**: 374–387.
- The ENCODE Project Consortium. 2012. An integrated encyclopedia of DNA elements in the human genome. *Nature* **489**: 57–74.
- Francastel C, Walters MC, Groudine M, Martin DI. 1999. A functional enhancer suppresses silencing of a transgene and prevents its localization close to centromeric heterochromatin. *Cell* **99**: 259–269.
- Gafni O, Weinberger L, Mansour AA, Manor YS, Chomsky E, Ben-Yosef D, Kalma Y, Viukov S, Maza I, Zviran A, et al. 2013. Derivation of novel human ground state naive pluripotent stem cells. *Nature* **504**: 282–286.
- Gerstein MB, Kundaje A, Hariharan M, Landt SG, Yan KK, Cheng C, Mu XJ, Khurana E, Rozowsky J, Alexander R, et al. 2012. Architecture of the human regulatory network derived from ENCODE data. *Nature* **489**: 91–100.
- Gorkin DU, Leung D, Ren B. 2014. The 3D genome in transcriptional regulation and pluripotency. *Cell Stem Cell* **14**: 762–775.
- Heintzman ND, Stuart RK, Hon G, Fu Y, Ching CW, Hawkins RD, Barrera LO, Van Calcar S, Qu C, Ching KA, et al. 2007. Distinct and predictive chromatin signatures of transcriptional promoters and enhancers in the human genome. *Nat Genet* **39**: 311–318.
- Jackson DA, Hassan AB, Errington RJ, Cook PR. 1993. Visualization of focal sites of transcription within human nuclei. *EMBO J* **12**: 1059–1065.

- Jin F, Li Y, Dixon JR, Selvaraj S, Ye Z, Lee AY, Yen CA, Schmitt AD, Espinoza CA, Ren B. 2013. A high-resolution map of the three-dimensional chromatin interactome in human cells. *Nature* **503**: 290–294.
- Jinek M, Chylinski K, Fonfara I, Hauer M, Doudna JA, Charpentier E. 2012. A programmable dual-RNA-guided DNA endonuclease in adaptive bacterial immunity. *Science* **337**: 816–821.
- Kagey MH, Newman JJ, Bilodeau S, Zhan Y, Orlando DA, van Berkum NL, Ebmeier CC, Goossens J, Rahl PB, Levine SS, et al. 2010. Mediator and cohesin connect gene expression and chromatin architecture. *Nature* **467**: 430–435.
- Keaton MA, Taylor CM, Layer RM, Dutta A. 2011. Nuclear scaffold attachment sites within ENCODE regions associate with actively transcribed genes. *PLoS One* **6**: e17912.
- Korkmaz G, Lopes R, Ugalde AP, Nevedomskaya E, Han R, Myacheva K, Zwart W, Elkon R, Agami R. 2016. Functional genetic screens for enhancer elements in the human genome using CRISPR-Cas9. *Nat Biotechnol* doi: 10.1038/nbt.3450.
- Lee TI, Young RA. 2013. Transcriptional regulation and its misregulation in disease. *Cell* **152**: 1237–1251.
- Levine M, Cattoglio C, Tjian R. 2014. Looping back to leap forward: Transcription enters a new era. *Cell* **157**: 13–25.
- Li Q, Peterson KR, Fang X, Stamatoyannopoulos G. 2002. Locus control regions. *Blood* **100**: 3077–3086.
- Li Y, Rivera CM, Ishii H, Jin F, Selvaraj S, Lee AY, Dixon JR, Ren B. 2014. CRISPR reveals a distal super-enhancer required for Sox2 expression in mouse embryonic stem cells. *PLoS One* **9**: e114485.
- Magis W, Fiering S, Groudine M, Martin DI. 1996. An upstream activator of transcription coordinately increases the level and epigenetic stability of gene expression. *Proc Natl Acad Sci* **93**: 13914–13918.
- Mali P, Yang L, Esvelt KM, Aach J, Guell M, DiCarlo JE, Norville JE, Church GM. 2013. RNA-guided human genome engineering via Cas9. *Science* **339**: 823–826.
- Maurano MT, Humbert R, Rynes E, Thurman RE, Haugen E, Wang H, Reynolds AP, Sandstrom R, Qu H, Brody J, et al. 2012. Systematic localization of common disease-associated variation in regulatory DNA. *Science* **337**: 1190–1195.
- Melnikov A, Murugan A, Zhang X, Tesileanu T, Wang L, Rogov P, Feizi S, Gnirke A, Callan CG Jr, Kinney JB, et al. 2012. Systematic dissection and optimization of inducible enhancers in human cells using a massively parallel reporter assay. *Nat Biotechnol* **30**: 271–277.
- Narendra V, Rocha PP, An D, Raviram R, Skok JA, Mazzoni EO, Reinberg D. 2015. Transcription. CTCF establishes discrete functional chromatin domains at the *Hox* clusters during differentiation. *Science* **347**: 1017–1021.
- Nora EP, Lajoie BR, Schulz EG, Giorgetti L, Okamoto I, Servant N, Piolot T, van Berkum NL, Meisig J, Sedat J, et al. 2012. Spatial partitioning of the regulatory landscape of the X-inactivation centre. *Nature* **485**: 381–385.
- Patwardhan RP, Hiatt JB, Witten DM, Kim MJ, Smith RP, May D, Lee C, Andrieu JM, Lee SI, Cooper GM, et al. 2012. Massively parallel functional dissection of mammalian enhancers *in vivo*. *Nat Biotechnol* **30**: 265–270.
- Perry MW, Boettiger AN, Bothma JP, Levine M. 2010. Shadow enhancers foster robustness of *Drosophila* gastrulation. *Curr Biol* **20**: 1562–1567.
- Porton B, Zaller DM, Lieberson R, Eckhardt LA. 1990. Immunoglobulin heavy-chain enhancer is required to maintain transfected  $\gamma$ 2A gene expression in a pre-B-cell line. *Mol Cell Biol* **10**: 1076–1083.
- R Core Team. 2013. *R: a language and environment for statistical computing*. R Foundation for Statistical Computing, Vienna, Austria. <http://www.R-project.org/>.
- Roadmap Epigenomics Consortium, Kundaje A, Meuleman W, Ernst J, Bilenky M, Yen A, Heravi-Moussavi A, Kheradpour P, Zhang Z, Wang J, et al. 2015. Integrative analysis of 111 reference human epigenomes. *Nature* **518**: 317–330.
- Schaffner W. 1988. Gene regulation: a hit-and-run mechanism for transcriptional activation? *Nature* **336**: 427–428.
- Selvaraj S, Dixon JR, Bansal V, Ren B. 2013. Whole-genome haplotype reconstruction using proximity-ligation and shotgun sequencing. *Nat Biotechnol* **31**: 1111–1118.
- Sexton T, Cavalli G. 2015. The role of chromosome domains in shaping the functional genome. *Cell* **160**: 1049–1059.
- Shalem O, Sanjana NE, Hartenian E, Shi X, Scott DA, Mikkelsen TS, Heckl D, Ebert BL, Root DE, Doench JG, et al. 2014. Genome-scale CRISPR-Cas9 knockout screening in human cells. *Science* **343**: 84–87.
- Shen Y, Yue F, McCleary DF, Ye Z, Edsall L, Kuan S, Wagner U, Dixon J, Lee L, Lobanenkov VV, et al. 2012. A map of the *cis*-regulatory sequences in the mouse genome. *Nature* **488**: 116–120.
- van de Werken HJ, Landan G, Holwerda SJ, Hoichman M, Klous P, Chachik R, Splinter E, Valdes-Quezada C, Oz Y, Bouwman BA, et al. 2012. Robust 4C-seq data analysis to screen for regulatory DNA interactions. *Nat Methods* **9**: 969–972.
- Visel A, Blow MJ, Li Z, Zhang T, Akiyama JA, Holt A, Plajzer-Frick I, Shoukry M, Wright C, Chen F, et al. 2009. ChIP-seq accurately predicts tissue-specific activity of enhancers. *Nature* **457**: 854–858.
- Wabl MR, Burrows PD. 1984. Expression of immunoglobulin heavy chain at a high level in the absence of a proposed immunoglobulin enhancer element in *cis*. *Proc Natl Acad Sci* **81**: 2452–2455.
- Walters MC, Magis W, Fiering S, Eidemiller J, Scalzo D, Groudine M, Martin DI. 1996. Transcriptional enhancers act in *cis* to suppress position-effect variegation. *Genes Dev* **10**: 185–195.
- Wang T, Wei JJ, Sabatini DM, Lander ES. 2014. Genetic screens in human cells using the CRISPR-Cas9 system. *Science* **343**: 80–84.
- Xie W, Schultz MD, Lister R, Hou Z, Rajagopal N, Ray P, Whitaker JW, Tian S, Hawkins RD, Leung D, et al. 2013. Epigenomic analysis of multilineage differentiation of human embryonic stem cells. *Cell* **153**: 1134–1148.
- Zhou HY, Katsman Y, Dhaliwal NK, Davidson S, Macpherson NN, Sakthidevi M, Collura F, Mitchell JA. 2014a. A *Sox2* distal enhancer cluster regulates embryonic stem cell differentiation potential. *Genes Dev* **28**: 2699–2711.
- Zhou Y, Zhu S, Cai C, Yuan P, Li C, Huang Y, Wei W. 2014b. High-throughput screening of a CRISPR/Cas9 library for functional genomics in human cells. *Nature* **509**: 487–491.
- Zuin J, Dixon JR, van der Reijden MI, Ye Z, Kolovos P, Brouwer RW, van de Corput MP, van de Werken HJ, Knoch TA, van IWF, et al. 2014. Cohesin and CTCF differentially affect chromatin architecture and gene expression in human cells. *Proc Natl Acad Sci* **111**: 996–1001.
- Zwaka TP, Thomson JA. 2003. Homologous recombination in human embryonic stem cells. *Nat Biotechnol* **21**: 319–321.

Received July 18, 2015; accepted in revised form January 20, 2016.



## A new class of temporarily phenotypic enhancers identified by CRISPR/Cas9-mediated genetic screening

Yarui Diao, Bin Li, Zhipeng Meng, et al.

*Genome Res.* 2016 26: 397-405 originally published online January 26, 2016

Access the most recent version at doi:[10.1101/gr.197152.115](https://doi.org/10.1101/gr.197152.115)

---

**Supplemental Material** <http://genome.cshlp.org/content/suppl/2016/01/21/gr.197152.115.DC1.html>

**References** This article cites 48 articles, 14 of which can be accessed free at:  
<http://genome.cshlp.org/content/26/3/397.full.html#ref-list-1>

**Creative Commons License** This article is distributed exclusively by Cold Spring Harbor Laboratory Press for the first six months after the full-issue publication date (see <http://genome.cshlp.org/site/misc/terms.xhtml>). After six months, it is available under a Creative Commons License (Attribution-NonCommercial 4.0 International), as described at <http://creativecommons.org/licenses/by-nc/4.0/>.

**Email Alerting Service** Receive free email alerts when new articles cite this article - sign up in the box at the top right corner of the article or [click here](#).

---

To subscribe to *Genome Research* go to:  
<http://genome.cshlp.org/subscriptions>