

扁胸切叶蚁属一新种
(膜翅目: 蚁科)

吴 坚 萧刚柔

(中国林业科学研究院林业研究所)

扁胸切叶蚁属 (*Vollenhovia* Mayr) 昆虫分布于亚洲、大洋洲及非洲的塞舌尔群岛, 通常生活于树木洞穴或朽木中。扁胸切叶蚁为捕食性昆虫, 捕食等翅目、双翅目和鳞翅目成虫和幼虫。该属全世界记载有 61 种, 我国仅记载了分布于台湾的 1 种, 即台湾扁胸切叶蚁 *Vollenhovia satoi* Santschi。现增加 1 新种, 分布于湖南省南部。模式标本保存于中国林业科学研究院林业研究所昆虫标本馆。

褐红扁胸切叶蚁 *Vollenhovia pyrrhoris* 新种

工蚁 (正模): 体长 2.8 毫米; 头长 0.62 毫米; 头宽 0.54 毫米; 头比 87; 头长 (含上颚) 0.80 毫米; 触角柄节长 0.46 毫米; 复眼最大直径 0.12 毫米; 腹柄长 0.53 毫米。

头矩形, 两侧几平直; 后头后缘中央凹入, 后头角圆形; 复眼大, 位于头部下侧方。触角 12 节; 柄节短, 逐渐向端部膨大, 伸达复眼至后头之间; 柄节长度几与第 2-11 节相等, 触角第 2 节长度几与第 3-5 节长度总和相等, 触角第 3-9 节宽大于长, 端部 3 节明显组成棒状。唇基前缘中央凹入; 上颚具 6 齿。胸部背板扁平, 略有突起, 以前胸最宽; 前一中胸背板缝不明显, 中胸一并胸腹节背板缝清晰; 并胸腹节着生有 2 个细小的齿, 不明显, 但其边缘总是具突起的扁边。腹柄不具柄, 其下具一亚三角形片状板; 腹柄结节高; 第 1 结节背方几乎扁; 第 2 结节背方圆形, 略宽于第 1 结节。后腹部长而窄。足较短, 腿节和胫节粗大, 跗节爪简单。

上颚仅具非常稀疏的刻点; 头部和胸部具密的纵向细刻纹和细刻点。第 1 结节刻点细密, 第 2 结节大部光滑。后腹部光滑, 具光泽。整个虫体 (包括足和触角) 遍布近乎直立或倾斜的黄色长柔毛。

体褐红色; 唇基、触角和足红黄色, 腹部端半部具较多褐色成分。

变异: 工蚁体长 2.6-3.0 毫米; 头比 85-93; 一般个体小者头近方形。有些个体体色具较多的黄色成分; 头部和腹末通常色较深。

雌虫 (无翅): 体长 3.5 毫米。与工蚁近似。触角柄节仅伸达复眼上方; 单眼存在, 大; 并胸腹节具明显的齿。体红褐色, 触角和足具较多的黄色成分。

正模: 1♀, 湖南省宜章县莽山, 1978.-VI-18。副模: 18♀♀, 同正模; 10♀♀, 湖

南省武冈县, 1978-X-6; 9♀♀, 1♀, 湖南省衡山县南岳, 1980-VIII-23。以上标本均为尹世才采集。

本新种工蚁与台湾扁胸切叶蚁 *V. Satoi* Santschi 近似, 但本种身体较光滑而有光泽, 体色较淡和结节形状的明显不同, 可与之相区别。

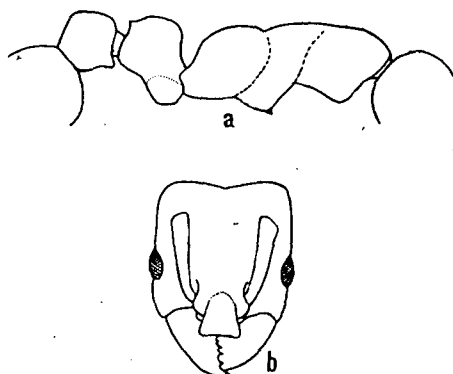


图1 褐红扁胸切叶蚁 *Vollenhovia pyrrhoris* sp. n.

a. 胸—腹部侧面观 (lateral view of alitrunk and petiole) b. 头部正面观 (full-face dorsal view of head).

参考文献

1. Ettershank, G. 1966, A generic revision of the world Myrmicinae related to *Solenopsis* and *Pheidologeton* (Hymenoptera: Formicidae). *Aust. J. Zool.*, 14: 73-171.
2. Santschi, F. 1937, Fourmis du Japon et de Formose. *Bull. Ann.Soc. ent.Belg.*, 77: 361-388.

A NEW SPECIES OF THE GENUS *VOLLENHOVIA* FROM CHINA (HYMENOPTERA: FORMICIDAE)

Wu Jian Xiao Gangrou

(Forest Research Institute, Chinese Academy of Forestry, Beijing, China)

In this paper, a new species of the genus *Vollenhovia* from Hunan Province of China is described. All the types are preserved in the Insect Collections, the Forest Research Institute, the Chinese Academy of Forestry, Beijing, China.

Vollenhovia pyrrhoris n. sp.

Worker (Holotype): TL 2.8mm; HL 0.62mm; HW 0.54mm; CI 87; head length with mandibles 0.80mm; scape length 0.46mm; greatest diameter of eye 0.12mm; petiole length 0.53mm.

Head rectangular, with the straight, parallel sides and the broadly concave occipital border; the occipital angles rounded; eyes rather large, in front of the middle of the head laterally; antennae 12-jointed; scape short and swollen distally, reaching about half the distance between eyes and the occipital border of the head; antennal funiculus exceeding the length of the scape by the length of the terminal segment; antennal segment 2 as long as segments 3-5 together, segments 3-9 broader than long, the three terminal segments forming a distinct club; anterior border of the clypeus notched in the middle; mandibles with 6 graduated teeth. Thorax flat, somewhat convex, broad in the pronotum; promesonotal suture obsolete; mesoepinotal suture distinct; epinotum bearing two very small teeth, often indistinct, but always margined along the sides of the declivous surface. Petiole not pedunculate, with a subtriangular lamellate plate beneath; nodes high, the 1st node flat above, the 2nd node round above and a little broader than the 1st one, which is straight in front, Gaster long and narrow. Legs rather short; femora and tibiae swollen, tarsal claws simple.

Mandibles very scattered punctured; head and thorax finely striated and punctured; finely and closely punctured on the 1st node of the petiole, and smooth the 2th one; gaster smooth and shining. Whole body, including legs and antennae, covered with a number of pale yellow, rather long, suberect or reclinate hairs.

Color brownish red; clypeus, antennae and legs reddish yellow.

Variation: TL 2.6-3.0mm; CI 85-93. The head of smaller ants more subsquare. Some specimens having more yellowish in color, usually darker in the head and the end of the gaster.

Female (Apterous): TL 3.5mm. Resembling the worker. Antennal scape only reaching the level of the top of the eye; ocelli present, large; epinotal teeth distinct. Color reddish brown; antennae, legs and gaster yellowish.

Holotype: 1 ♀, Mangshan Forestry Centre, Yizhang County of Hunan Province, 18-VI-1978. Paratype: 18 ♀ ♀, data as holotype; 10 ♀ ♀, Wugang County of Hunan Province, 6-X-1978; 9 ♀ ♀, 1 ♀, Nanyun Mt., Heshan Country of Hunan Province, 23-VIII-1980. All the specimens were collected by Mr. Yi Shicai.

This species resembles *V. satoi* Santschi of Taiwan, but differs from it by the more smooth and shining body, the shape of the petiolar nodes, and the lighter color.