

INVITED REVIEW

A perspective view of sodium iodide symporter research and its clinical implications

Garcilaso Riesco-Eizaguirre^{1,2} and Pilar Santisteban¹¹Instituto de Investigaciones Biomédicas 'Alberto Sols', Consejo Superior de Investigaciones Científicas y Universidad Autónoma de Madrid, Madrid, Spain and ²Servicio de Endocrinología y Nutrición, Hospital Universitario La Paz, Madrid, Spain

(Correspondence should be addressed to P Santisteban; Email: psantisteban@iib.uam.es)

Abstract

The sodium iodide symporter (NIS) is an intrinsic plasma membrane protein that mediates active iodide transport into the thyroid gland and into several extrathyroidal tissues, in particular the lactating mammary gland. Cloning and molecular characterization of the NIS have allowed the investigation of its key role in thyroid physiology as well as its potential pathophysiological and therapeutic implications in benign and malignant thyroid diseases. Similarly, elucidating the mechanisms underlying the regulation of NIS in lactating mammary gland and breast cancer, in which more than 80% of cases express endogenous NIS, may lead to findings that have novel implications for pathophysiology and therapy. Two approaches may, in the future, pave the way to extend the use of radioiodide treatment to nonthyroidal cancer. One is based on the reinduction of endogenous NIS expression in thyroid and breast cancer by targeting the main mechanisms involving tumoral transformation and dedifferentiation. The other is based on the application of NIS as a novel cytoreductive gene therapy strategy. NIS offers the unique advantage that it can be used both as a reporter and as a therapeutic gene, so that it is possible to image, monitor, and treat the tumor with radioiodide, just as in differentiated thyroid cancer. This review summarizes the main recent findings in NIS research that have a direct impact on diagnosis and therapeutic management.

European Journal of Endocrinology 155 495–512

Introduction

The ability of the thyroid gland to concentrate iodide has long provided the basis for diagnosis and therapeutic management of benign thyroid diseases and thyroid cancer. As early as 1896, Baumann found for the first time that the thyroid gland concentrates iodide by a factor of 20–40 times with respect to plasma under physiological conditions (1). Given the extraordinary importance of iodide in the thyroid, a large body of research followed this discovery, increasing our knowledge of thyroid gland physiology and pathology. Another important breakthrough occurred in 1942, when, in the Massachusetts Institute of Technology (MIT), taking advantage of this unique iodide-concentrating characteristic, radioactive iodide was supplied to patients in order to image and, eventually, destroy their thyroid glands (2, 3). Since then, thousands of patients have been given radioiodide for medical purposes, improving significantly the management of thyroid diseases. A third breakthrough occurred in 1996 when the sodium iodide symporter (NIS) was finally cloned, first in rats (4) and then in humans (5). This has improved our understanding of thyroid pathophysiology tremendously, and has opened a promising field in

cancer research; it has opened the way for new strategies to reexpress endogenous NIS in thyroid and breast cancer, as well as to induce ectopic functional NIS expression by gene transfer in nonthyroidal cancers (6). Radioiodide treatment that formerly was beneficial only in thyroid diseases can eventually be extended to a wide range of nonthyroidal cancers.

NIS is an integral plasma membrane glycoprotein that mediates active transport of iodide into the follicular thyroid cell, the first step in thyroid hormone synthesis. The symporter cotransports two sodium ions (Na^+) along with one iodide ion (I^-), with the transmembrane sodium gradient serving as the driving force for iodide uptake. The electrochemical sodium gradient that allows NIS to be functional is maintained by the ouabain-sensitive Na^+/K^+ -ATPase. NIS-mediated iodide transport is inhibited by the competitive inhibitors thiocyanate and perchlorate. Inside the cell, iodide is driven through the apical membrane to the follicular lumen by pendrin (the Pendred syndrome gene product) (7) and other unknown systems, in a process called iodide efflux. Thus, cell polarization plays a central role in correct iodide transport. The formerly named apical iodide transporter (AIT), currently known as Na^+ /monocarboxylate transporter (SMCT), has been

proven not to transport iodide in thyroid cells (8). In a very complex process, thyroperoxidase (TPO) catalyzes an oxidative reaction consisting of iodide oxidation, its binding to tyrosine residues of thyroglobulin (Tg), and the oxidative coupling of two iodotyrosines will further provide triiodothyronine (T₃) and thyroxine (T₄). Thyroglobulin is a large protein that accumulates in the thyroid colloid and this process is called iodide organification and can be inhibited by propylthiouracil and methimazole, which are TPO enzyme-activity inhibitors. TPO has no biological activity in the absence of H₂O₂, which is likely to be the limiting factor for Tg iodination when iodide supply is normal. The H₂O₂-generating system is a calcium dependent and trans-membrane system, whose main enzymes are thyroid oxidase (ThOX)1 and ThOX2 also called 'Duox' for dual oxidase) belonging to the nicotinamide adenine dinucleotide phosphate hydrogen (NADPH) oxidase (NOX) family and have been recently cloned (9). After endocytosis and phagolysosomal degradation of thyroglobulin, T₃ and T₄ are released to the plasma. The entire process, including iodide transport and NIS expression, is regulated by thyroid-stimulating hormone (TSH), which interacts with the TSH receptor (TSHR; a seven-transmembrane receptor coupled to heterotrimeric G-protein) localized in the basolateral membrane, and stimulates cAMP-related pathways.

The human *NIS* gene is localized on chromosome 19p12–13.2, and encodes a glycoprotein of 643 aminoacids (aa) with a molecular mass of approximately 70–90 kDa. The gene comprises 15 exons interrupted by 14 introns and has an open reading frame of 1929 nucleotides. As a member of the solute carrier family (SLC5A5, according to the Online Mendelian Inheritance in Man (OMIM) classification; MIM number: 601843), all of which use the electrochemical sodium gradient as the driving force, NIS is predicted to have a 13-transmembrane segment pattern with the N-terminus facing the extracellular milieu, and the COOH-terminus facing the cytosol (10). There are three sites of glycosylation in the mature form of NIS, but glycosylation does not seem to play any role in the stability, activity, or targeting to the membrane of the symporter (11). NIS is also a phosphoprotein, and the major phosphorylation region is the COOH terminus (12). The purpose of this review is to summarize the most recent findings on NIS research emphasizing its diagnostic and therapeutic implications.

Regulation of NIS

Main factors that regulate NIS expression

TSH TSH is the main hormonal regulator of thyroid function, and the majority of its actions are mediated by activation of adenylate cyclase through the GTP-binding protein, G α s. It has long been established that

TSH stimulates iodide transport into the thyroid cells via the cAMP pathway in a protein synthesis-dependent manner (13, 14). After the cloning of NIS, further studies revealed that at least two mechanisms are used by TSH through cAMP to regulate iodide transport. The first and most obvious one positively regulates *NIS* gene transcription, as demonstrated in studies *in vitro* (15, 16) and *in vivo*. The second one induces the activity of the NIS protein (12, 17), presumably by post-translational modifications, which are essential for NIS trafficking to the membrane, and will be commented on in detail later.

Iodide Apart from TSH, the main factor regulating the accumulation of iodide in the thyroid and, thus, NIS activity, has long been considered to be iodide itself. It is a well-known phenomenon among physicians that high doses of iodide cause an acute and transient decrease in thyroid function and it is used occasionally to obtain rapid remission in severe hyperthyroidism. Wolff and Chaikoff reported in 1948 that organic binding of iodide (which later was shown to be mediated by TPO) in the rat thyroid *in vivo* was blocked when iodide plasma levels reached a critical high threshold, a phenomenon known as the acute Wolff–Chaikoff effect (18). Wolff *et al.* reported in 1949 that as early as 2 days after onset of this acute inhibitory effect, an escape or adaptation from the effect occurred, so that the level of organification of iodide was restored and normal hormone biosynthesis reappeared. This phenomenon constitutes a highly specialized intrinsic autoregulatory system that protects the thyroid from high doses of iodide, but at the same time ensures adequate iodide uptake for hormone biosynthesis (19).

The mechanism underlying the inhibition of iodide organification by high levels of iodide, the acute Wolff–Chaikoff effect remains poorly understood after all these years. Grollman *et al.* observed that the presence of methimazole (MMI), an inhibitor of TPO activity, abolished the iodide uptake-suppressing effect of iodide (20). This action suggested to the authors that the Wolff–Chaikoff effect is mediated by an intracellular iodinated compound, and they proposed the iodolipids as candidates, since these compounds have been shown to inhibit the TSH-mediated adenylate cyclase activity.

The cloning of *NIS* has provided new tools to improve our understanding of the escape from the Wolff–Chaikoff effect. One *in vivo* study reported that acute administration of iodide to rats decreased the NIS mRNA levels at 6 h and the protein levels at 24 h, and this inhibitory effect was maintained during chronic iodide ingestion (6 days). These results clearly suggest that escape is due to a decrease in NIS expression (21). The same group studied the effect of high doses of iodide on NIS regulation in FRTL-5 cells. Surprisingly, high

doses of iodide during 24 and 48 h did not decrease the NIS mRNA levels, but did decrease the NIS protein levels in a dose-dependent manner, suggesting that in this *in vitro* thyroid cell model, iodide modulates NIS at a post-transcriptional level (22). These results are in sharp contrast with the previous *in vivo* study reported by the same authors. Furthermore, in another study, a 50% decrease in both iodide uptake and NIS mRNA levels after iodide administration during 48 h was observed in FRTL-5 cells (23). Whether the different results concerning NIS regulation by iodide at a transcriptional and/or post-transcriptional level are due to different experimental conditions is something that needs to be clarified.

Cytokines and growth factors Cytokines, such as tumor necrosis factor (TNF)- α , TNF- β , interferon (IFN)- γ , interleukin (IL)-1 α , IL-1 β , and IL-6 have been proven to inhibit NIS mRNA expression and iodide uptake activity in FRTL-5 and human thyroid cells (24–26). One *in vivo* study observed significant inhibition of thyroidal NIS mRNA and protein expression in transgenic mice that develop hypothyroidism following thyroid-targeted expression of IFN- γ (27). The fact that all these cytokines exert inhibitory effects on NIS expression matches well with the mechanisms underlying autoimmune hypothyroidism, as T-cell recognition of autoantigens in the thyroid leads to a mixed pattern of cytokine production. Moreover, the thyroid cells also produce a number of proinflammatory molecules, which will tend to exacerbate the autoimmune process leading to hypothyroidism.

Transforming growth factor (TGF)- β , a potent inhibitor of growth and DNA synthesis in thyroid cells, decreased TSH-induced NIS expression as well as TSH-induced iodide uptake activity in FRTL-5 cells (25, 26). In contrast with other cytokines, TGF- β also induced a change in FRTL-5 cells from a cuboidal to a flattened morphology (25). Similarly, IGF-I also decreased TSH-induced NIS mRNA levels, although it has the opposite effect on TPO and thyroglobulin (Tg) mRNA levels (28).

Thyroglobulin Tg acts as a potent suppressor of thyroid-specific genes, including NIS mRNA levels and subsequent iodide uptake activity. The mechanism underlying this inhibitory effect is not well understood. One group has observed that suppression of thyroid-specific gene expression by purified 12S, 19S, and 27S follicular Tg was dependent on their ability to bind to the FRTL-5 membrane. This binding was blocked by an antibody against the thyroid apical membrane asialoglycoprotein receptor, which is a phosphoprotein that is critical for ATP-mediated inactivation of receptor-mediated endocytosis (29). Whether it acts directly or

indirectly, Tg-mediated suppression of NIS expression may represent a negative feedback autoregulatory mechanism that counterbalances TSH stimulation of follicular function (30). This is in accordance with the particular distribution of NIS observed when immunohistochemistry (IHC) is performed in normal thyroid; there is a low or null NIS expression in bigger thyroid follicles (containing larger amounts of Tg), which show inactive and flattened epithelial cells, in contrast with the smaller follicles where NIS expression is increased and cells are cuboidal reflecting a higher activity in order to produce more Tg.

Estradiol Estradiol increases proliferation and down-regulates NIS expression and iodide uptake in FRTL-5 cells, suggesting that this may contribute to the higher prevalence of goiter in women (31).

Signal transduction pathways

TSH–TSH-R–cAMP–protein kinase (PKA) signaling is the central pathway for thyroid proliferation and differentiation, in sharp contrast with other tissues where cAMP triggers inhibitory effects on proliferation. Thus, the integrity of this pathway is essential for NIS expression, although the exact mechanism by which PKA promotes NIS expression is still unknown. Additionally, PKA-independent signaling has been shown to play a complementary role in thyroid differentiation. In FRTL-5 cells, chronic stimulation with TSH downregulates PKA (32) and acute stimulation with cAMP agonists under these conditions results in increased NIS transcriptional activity without PKA activation (33). The MEK–ERK pathway has been proposed as a PKA-independent pathway, as MEK inhibition partially inhibits cAMP-induced NIS gene transcription (43%) (33), and this pathway seems to be stimulated by TSH through Rap-1 without PKA activation (34, 35). However, activation of the MAPK pathway in response to TSH/cAMP has not been confirmed by other groups, including ours (36, 37), leaving this issue as a matter of controversy. Another pathway, the p38 MAPK pathway, has been proven to have a stimulatory effect on NIS gene expression, although it seems to do it in a PKA-dependent way (38).

Recently, our group has shown that at least two inhibitory pathways are likely to counterbalance the aforementioned pathways, resulting in an overall balance (Fig. 1). The PI3K pathway downregulates NIS expression in thyroid cells. In FRTL-5 cells, we have demonstrated that IGF-I inhibits the cAMP-induced NIS expression through the PI3K pathway (28). Similarly, expression of a Ras mutant that selectively stimulates PI3K markedly decreases the TSH-induced NIS expression in WRT rat thyroid cells (39). The second inhibitory pathway is the TGF- β /Smad signaling. As

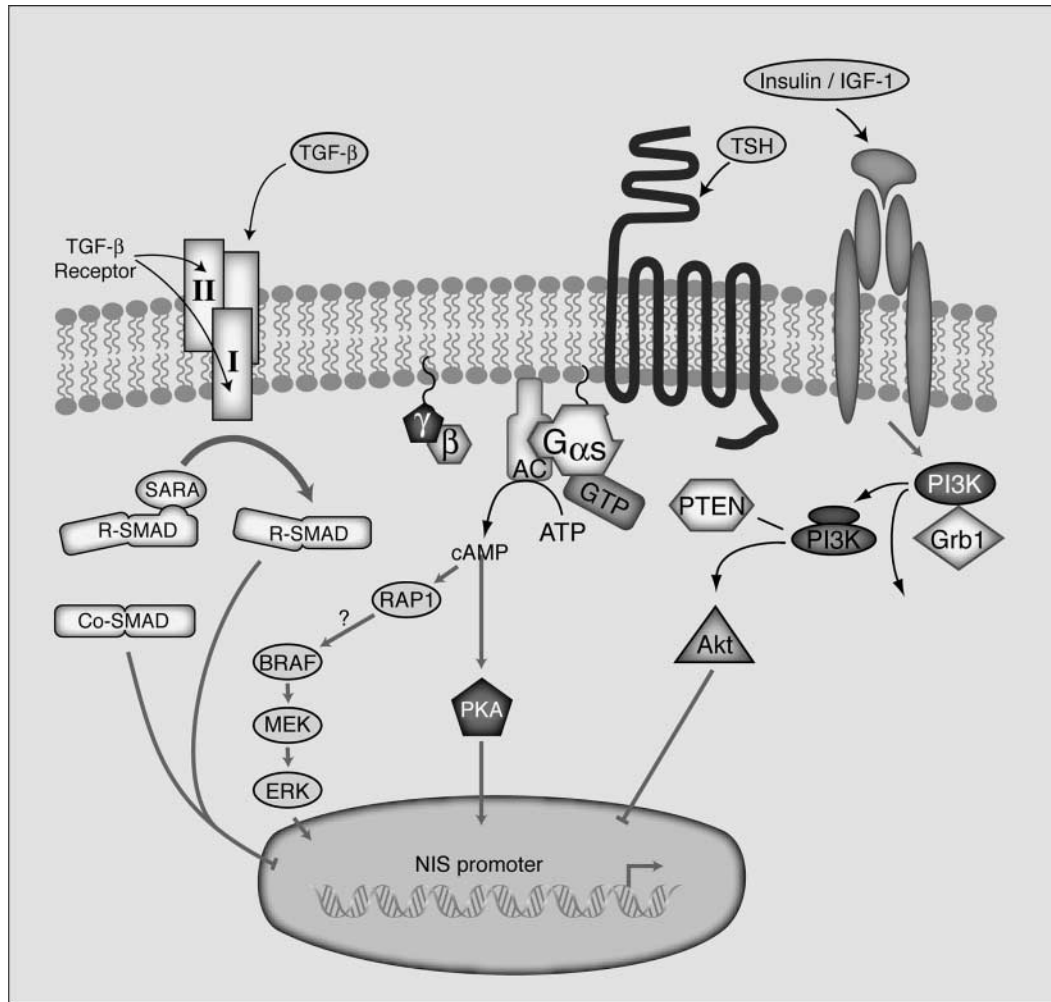


Figure 1 Signal transduction pathways involved in sodium iodide symporter (NIS) regulation. The figure shows the main stimulatory pathway based on thyroid-stimulating hormone receptor (TSH-R)–cAMP both protein kinase (PKA)-dependent and PKA-independent and the two inhibitory pathways described by our group based on insulin-like growth factor (IGF)-I–PI3K–Akt and transforming growth factor (TGF)-β–Smad, AC, adenylate cyclase.

mentioned earlier, TGF-β decreases TSH-induced NIS expression and iodide uptake activity in FRTL-5 cells (25, 26). Our group further demonstrated that TGF-β-induced downregulation of NIS is mediated via Smad by decreasing Pax-8 mRNA levels and impairing PAX-8 binding to the NIS promoter due to the physical interaction between Smad-3 and Pax-8 (40).

NIS transcriptional activity

Cell type-specific gene transcription is dependent on a set of transcription factors whose combination is unique to that cell type. Three transcription factors, thyroid transcription factor (TTF)-1, FOXE-1, and Pax-8, have been implicated in the control of the genes encoding thyroid-specific proteins, such as thyroglobulin (Tg), thyroid peroxidase (TPO), and TSH receptor (TSH-R). TTF-1 is a homeodomain (HD)-containing protein,

present in the developing thyroid, lung, and diencephalon (41). FOXE-1, a forkhead protein, has been detected in the endoderm of the developing foregut, including the thyroid anlage, and in the anterior pituitary (42), while the paired-domain (PD) factor, PAX-8, is present in thyroid, kidney, and the central nervous system (43).

The structures of Tg and TPO promoters are very similar to each other. TTF-1 and PAX-8 bind to a specific region of both promoters, and DNA sequences recognized by both factors largely overlap (44). TTF-1 and PAX-8 could be used as alternatives to each other, depending on the functional requirements of Tg and TPO promoters (45). On the other hand, the structure of the TSH-R promoter is different from Tg and TPO (46). The TSH-R promoter lacks the PAX-8-binding site, and gene expression depends on TTF-1 and other factors that interact with a cAMP-response element (CRE) (47).

The structure of the rat NIS promoter has been studied in detail in the past few years. There are two main regulatory regions: the proximal NIS promoter localized between nucleotides -124 and -420 relative to the transcription start site, and the NIS upstream enhancer (NUE) localized between nucleotides -2260 and -2495 (16, 33) (Fig. 2). The NIS proximal promoter contains binding sites for TITF-1 (48), NTF-1 (NIS-TSH-responsive factor-1) (49), and Sp-1 (50), whereas the NUE contains binding sites for PAX-8 and TITF-1 and cAMP-responsive element (CRE)-like sequences. Although the role and importance of these regions and factors need further investigation, it is clear that the NUE is essential for NIS transcriptional activity and that the functional interaction between PAX-8 and a factor binding at the CRE-like sequence is necessary to achieve thyroid-specific transcription in a cAMP-dependent manner. By contrast, TITF-1 seems not to be necessary to induce NUE-dependent transcription (16, 33).

Post-transcriptional regulation of NIS

NIS needs to be localized in the plasma membrane to be fully functional. This is important not only for iodide transport into the thyroid gland, but also for radioiodide therapy in thyroid cancer. The decrease in iodide uptake observed in most thyroid cancers is due to impaired NIS targeting of, or retention at, the plasma membrane (see section NIS and thyroid cancer). Therefore, it is of considerable interest to elucidate the mechanisms that regulate the subcellular distribution of NIS).

After TSH deprivation, cultured rat thyroid cells still express NIS for several days due to its long half-life (3–5 days), but it is no longer retained in the membrane and iodide transport decreases dramatically within the

first 24 h. This suggests that there are TSH-dependent mechanisms other than the transcriptional ones that keep NIS at the plasma membrane in thyroid cells (12). As NIS is a phosphoprotein and phosphorylation has been reported to play a role in regulating the targeting of other transporters, this mechanism has been postulated to be responsible for TSH-mediated post-transcriptional regulation of NIS. In fact, its phosphorylation pattern seems to be partially modulated by TSH in a PKA-dependent manner. (12). However, whether NIS phosphorylation is involved in trafficking and/or retention in the basolateral plasma membrane is something that has not yet been demonstrated. NIS also contains several sequences involved in protein–protein interactions. For instance, NIS contains a PDZ-target motif at the COOH-terminal tail that is recognized by PDZ-binding proteins, which have been implicated in regulating the internalization of other transporters. Other target motifs are also present at the COOH-terminal tail, such as a dileucine motif, which interacts directly with the clathrin-coated machinery (6).

NIS and benign thyroid disease

Congenital hypothyroidism (CH), a disease with an incidence of 1 in 3000 in neonates, has an irreversible deleterious effect on the development of the newborn leading to neurological defects if not treated. The most common cause of permanent CH is thyroid dysgenesis (85–90%) in which the transcription factor genes, *TITF-1*, *FOXE-1*, and *PAX-8*, play an obvious role in the etiology. Inborn errors of thyroid hormonogenesis are responsible for 10–15% of CH cases and usually have autosomal recessive inheritance, consistent with a single gene mutation. Mutations in thyroid-specific

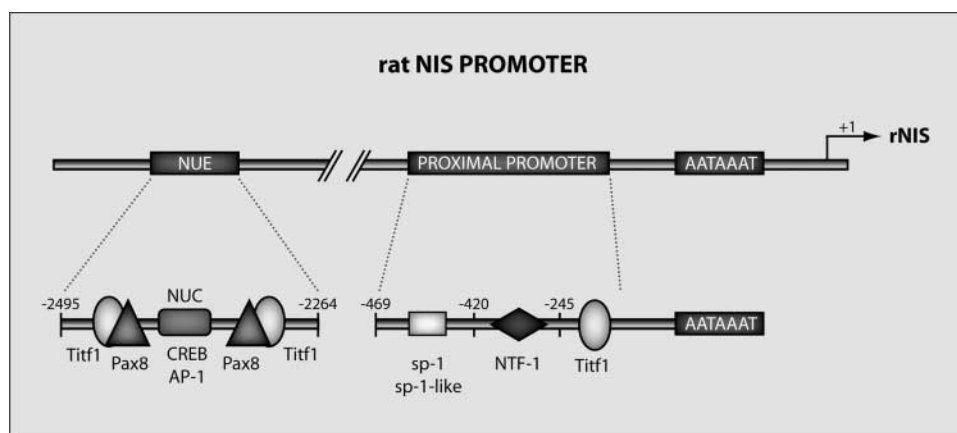


Figure 2 Diagram of the rat sodium iodide symporter (NIS) promoter showing the major transcription start site +1 and the proximal promoter and the NIS upstream enhancer (NUE). The proximal promoter contains binding site for thyroid transcription factor-1 (TITF-1), NIS-thyroid-stimulating hormone-responsive factor (NTF)-1, and Sp-1. The NUE contains two Pax-8 and two TITF-1-binding sites as well as a cAMP-responsive element (CRE)-like binding site.

genes, such as *TPO*, *Tg*, and *TSH-R* and more recently, *THOX* and *Pendrin*, have been identified among causes of congenital hypothyroidism. Iodide transport defect (ITD; OMIM 274400) is a cause of CH mediated by NIS mutations with an autosomal recessive inheritance pattern. After the cloning of *NIS*, 11 mutations in this symporter have been identified so far: G93R, Q267E, C272X, T354P, 515X, Y531X, G543E, G395R, V59E, deletion 143–323, and deletion 439–443 (51–59). They are either nonsense, alternative splicing, frameshift, deletion, or missense mutations of the *NIS* gene. A variable degree of hypothyroidism, goiter, reduced or absent iodide uptake and low iodide saliva:plasma ratio was observed in all these patients.

Although the clinical picture of these patients has been well described, only four mutations have been characterized at the molecular level to date: T354P, G395R, Q267E, and recently, G543E. The mechanisms underlying the lack of activity of these four mutants have provided some new insights, but still there is a long way to go to decipher the structural and functional mechanisms by which NIS is able to cotransport two Na^+ and one I^- . The hydroxyl group at residue 354 was shown to be essential for NIS function (57), and the presence of a small and uncharged aa residue at position 395 is required for NIS activity (60). Although one study based on flow cytometry using a monoclonal NIS antibody found impaired trafficking to the membrane of the Q267E mutation (61), a more extensive study using the same monoclonal NIS antibody and several approaches (biotinylation, flow cytometry, and immunofluorescence) conclusively demonstrated that Q267E NIS was properly targeted to the plasma membrane. In fact, the authors found this mutant decreased (but did not abolish) iodide uptake by lowering the turnover number of NIS, or in other words, by decreasing the maximal rate of transport activity (58). None of these three aforementioned mutations affected NIS expression or trafficking to the plasma membrane. Interestingly, the G543E mutation, located on the cytoplasmic side of transmembrane segment XIII, impairs NIS maturation and trafficking to the membrane, and NIS is retained intracellularly, presumably because of aberrant folding (59).

Many studies have focused on the potential role of NIS as a novel autoantigen in the pathogenesis of autoimmune thyroid disease (AITD). At least two reviews have summarized all the results obtained from these studies (6, 62) in detail, and there are no recent advances in this area. Briefly, both reviews conclude that, although there is evidence that autoantibodies directed against NIS are present in sera from patients with AITD, the biological effect of anti-NIS autoantibodies remains unclear and NIS does not seem to play a major role as an autoantigen.

NIS and thyroid cancer

Iodide uptake is diminished in thyroid cancer compared with normal thyroid tissue. Induction of hypothyroidism to elevate endogenous TSH or administration of human recombinant TSH is used by physicians to enhance iodide uptake, proving that cancer cells still maintain a certain degree of differentiation and hormonal responsiveness. When thyroid cancer undergoes total loss of differentiation, no iodide uptake is observed, and the prognosis is clearly worse. Overall, low or absent NIS expression was thought to occur under these circumstances. Unexpectedly, after the cloning of *NIS*, studies based on IHC and reverse transcriptase (RT)-PCR revealed that up to 70–80% of thyroid cancers expressed or even overexpressed NIS, yet this expression was mainly cytoplasmic and not targeted to the basolateral membrane (63–65). These observations pointed out that targeting of, and retention in, the plasma membrane are essential for NIS to be fully functional, explaining why iodide uptake is diminished in thyroid cancer (Fig. 3).

In an attempt to explore the use of NIS as a biological marker in thyroid cancer, a large retrospective study was performed in order to determine whether NIS protein expression in primary differentiated thyroid cancer tumors correlated with the subsequent ^{131}I uptake by metastatic lesions in the same patients. Although the authors found that positive NIS immunoreactivity in primary tumors seemed to be predictive of subsequent recurrences positive in ^{131}I scans, this study did not take into account whether NIS was expressed in the membrane and negative NIS staining did not predict ^{131}I scan-negative metastasis (66). Another study demonstrated that low NIS expression assessed by RT-PCR correlated with more aggressive tumors (67). In accordance with these data is our recent study, where BRAF-positive papillary thyroid carcinoma correlated with scan-negative recurrences and impairment of NIS targeting to the membrane as assessed by IHC (68). Overall, NIS expression may have a role as a new biological marker in the post-operative management of patients with differentiated thyroid carcinoma, but these findings need further confirmation in prospective studies.

Oncogenic mutations of *BRAF* and *RAS* family genes as well as *RET* rearrangements play an important role in malignant transformation and tumor progression of thyroid cancer. These oncoproteins contribute to the partial or complete loss of differentiation of thyroid cancers, where a favorable prognosis highly depends on the degree of differentiation. Studies *in vitro* have found that the activation of these three oncogenes decreases NIS mRNA levels among other thyroid-specific genes (69–71). Interestingly, we further demonstrated that BRAF not only decreases NIS protein expression, but also impairs NIS targeting to the membrane both *in vitro* and *in vivo* (68). This finding is concordant with the

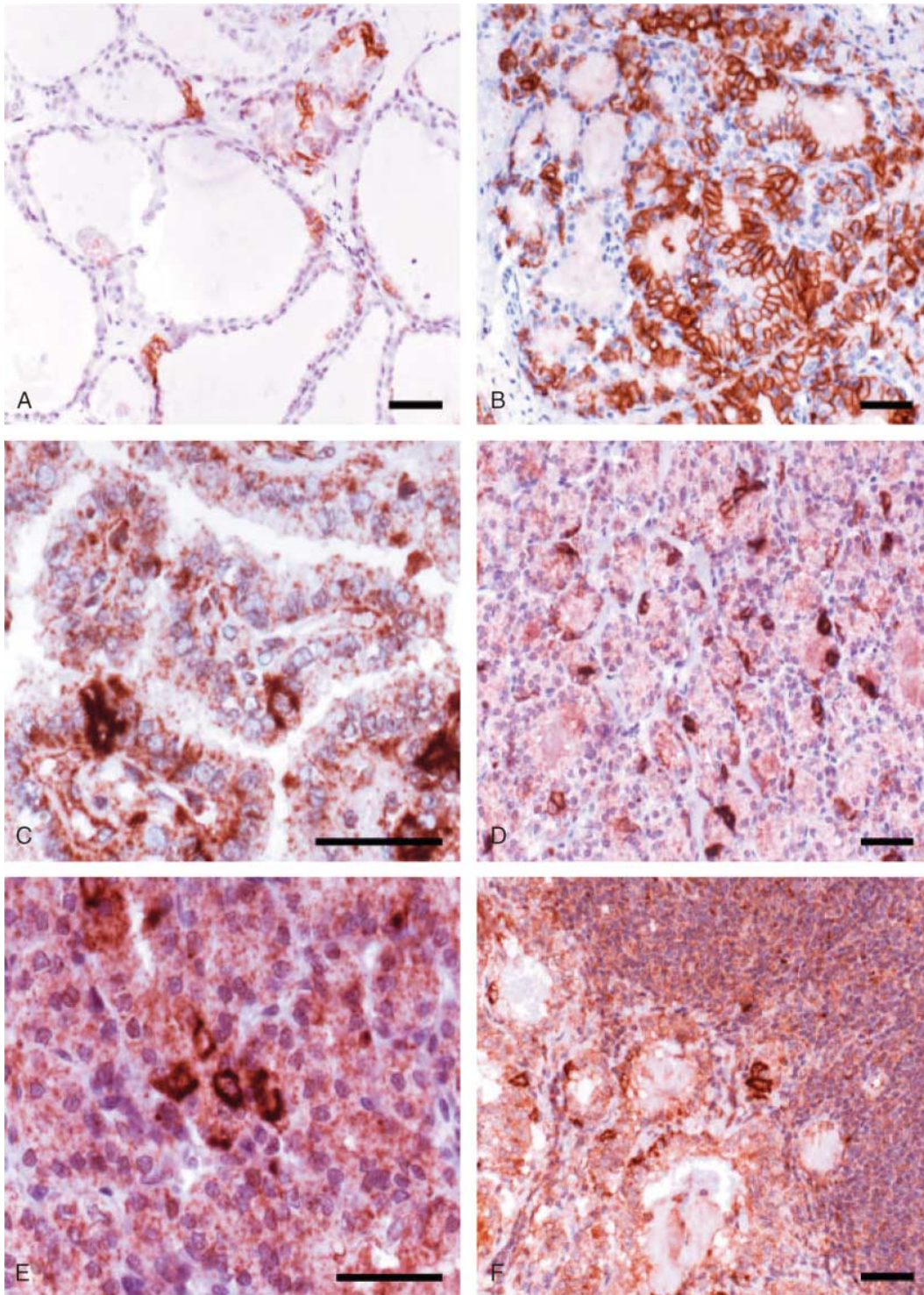


Figure 3 Sodium iodide symporter (NIS) expression in several samples of papillary thyroid cancer (PTC). Four micrometer sections were probed with anti-NIS Ab. (A) Normal thyroid tissue showing plasma membrane immunoreactivity in 10–20% of the follicular cells (original magnification 20 \times). (B) Graves disease showing follicular hyperplasia and predominant plasma membrane staining in more than 90% of the cells, used as positive control (original magnification 20 \times). (C) Classic PTC with intracellular immunoreactivity and distinct plasma membrane in > 10% of the cells (original magnification 40 \times). (D) Follicular variant of PTC with intracellular immunoreactivity and distinct plasma membrane in > 10% of the cells (original magnification 20 \times). (E) Several cells with distinct plasma membrane in a follicular variant of PTC (original magnification 40 \times). (F) Lymphatic node with metastases of PTC showing distinct plasma membrane immunoreactivity (original magnification 20 \times (adapted from our own data; 68)).

association between BRAF mutation and a high frequency of recurrences that have lost the ability of concentrating iodide, as reported by our group and Xing's group (68, 72).

Induction of endogenous NIS expression in thyroid cancer

Since thyroid cancer conserves a certain degree of differentiation, one logical approach is to redifferentiate the cell and reinduce endogenous NIS expression. Several compounds, known to have tumor-inhibitory effects, have partially succeeded in reaching this goal:

Retinoic acid (RA) RA is a vitamin A derivative that plays a central role in differentiation and cell growth. There are two types of nuclear receptors that mediate RA actions, the retinoic acid receptors (RAR) and the retinoid X receptors (RXR). RAR has three isoforms, α , β , and γ , with a specific pattern of development and tissue distribution. All *trans* RA (*tRA*), a 'pan-retinoid' (nonselective) ligand to all RAR isomers, has been proved to induce NIS mRNA in two thyroid cancer cell lines, yet iodide uptake studies were not performed (73). It is worth noting that the same authors observed the opposite effect in the normal thyroid cell line FRTL-5 (73). Several clinical trials have been done using *tRA* in order to increase radioiodide uptake and improve clinical outcome of patients with recurrent thyroid cancer (see review by Dohan *et al.*) (6). In general terms, radioiodide uptake was improved in 20–42% of the cases, but tumor shrinkage was observed in very few cases after $^{131}\text{I}^-$ treatment. The largest study was carried out on 50 iodide scan-negative patients: 26% had a significant increase in radioiodide uptake, but only 16% had reduced tumor volume (74).

Troglitazone This antidiabetic compound is a peroxisome proliferator-activated receptor- γ (PPAR- γ) agonist that, among others effects, inhibits cell proliferation and induces apoptosis. Although the role of these nuclear receptors in carcinogenesis remains to be elucidated, the rearrangement PPAR- γ /PAX-8 occurs frequently in the follicular thyroid carcinoma and in the follicular variant of papillary thyroid carcinoma (75, 76). This rearrangement results in an inactivation of PPAR- γ function. Troglitazone has been reported not only to inhibit proliferation and induce apoptosis but also, interestingly, to increase NIS mRNA in several thyroid cancer cell lines (77, 78). More studies are needed to confirm these promising results *in vivo*.

Histone deacetylase (HDAC) inhibitors Epigenetic modifications, such as histone deacetylation play an

important role in the regulation of gene expression and are likely to be involved in carcinogenesis. Histones are the core protein components of nucleosomes and their acetylation status regulates, in part, gene expression. Deacetylated histones are generally associated with silencing of gene expression, and aberrant acetylation is associated with several solid tumors and hematological malignancies. Inhibitors of HDACs, such as depsipeptide, trichostatin A (TSA), or valproic acid (VPA), have been shown to inhibit transformed cell growth *in vitro* and *in vivo* and to induce differentiation and/or apoptosis in many tumor cells, and are thus proving to be an exciting therapeutic approach to cancer (79).

Depsipeptide (FR901228) is an HDAC inhibitor that significantly increases NIS mRNA and iodide uptake in several thyroid cancer cell lines, including anaplastic cancer cell lines (80). Interestingly, depsipeptide induces concomitant expression of TPO, Tg, and TTF-1 leading to efficient iodide accumulation and retention *in vivo*. This suggests that the induction of iodide organification and a decreased iodide efflux are also restored by depsipeptide. Although depsipeptide exhibited cytotoxic effects *in vitro*, tumor volume reduction in *in vivo* models has not yet been reported. TSA is another HDAC inhibitor that increases mRNA NIS levels in several cancer cell lines, although iodide uptake induced by TSA has not yet been confirmed (81). Finally, VPA, a class I selective histone deacetylase inhibitor widely used as an anti-convulsant, promotes differentiation in some poorly differentiated thyroid cancer cell lines but not in others. One group observed that VPA-induced NIS gene expression, NIS membrane localization, and iodide accumulation in NPA cells (poorly differentiated). However, in ARO cells (anaplastic), only induction of NIS mRNA was observed, and this was not followed by any change in iodide uptake (82). Another group observed that NIS and Tg mRNA levels were upregulated by 93–370% in three thyroid follicular cell lines, but remained unchanged in a papillary cell line. However, no iodide uptake was performed in this study. In addition, VPA was highly effective at suppressing growth, with apoptosis induction and cell cycle arrest being the underlying mechanisms (83).

Overall, HDAC inhibitors are a promising therapy in thyroid cancer. Several HDAC inhibitors are in clinical trials with cancer patients. They are well tolerated, cause accumulation of acetylated histones in peripheral mononuclear cells and tumors and, more importantly, have clinical activity with objective tumor regression.

Demethylating agents DNA methylation, another epigenetic modification, is a covalent modification of cytosine residues that occurs at the dinucleotide sequence CpG in vertebrates. Nearly, half of all human genes have CpG islands associated with transcriptional start sites. Unmethylated CpG islands are seen in highly

transcribed genes, whereas heavily methylated CpG islands inhibit transcription (84). Although overall DNA methylation is often decreased in cancers, CpG islands in critical gene promoter regions can become hypermethylated, resulting in loss of gene expression. Abnormal patterns of DNA methylation are observed consistently in human tumors, including benign and malignant human thyroid tumors (85, 86). The human NIS gene has three CpG-rich regions. One region is located in the promoter, extending upstream for about 100 base pairs from the transcription start site. Two additional CpG-rich sequences are present downstream from this region, one of them extending to the first intron, corresponding to the human NIS (hNIS) untranslated region, and the other one extending to the coding region within the first exon (86). In seven human thyroid carcinoma cell lines lacking hNIS mRNA, treatment with 5-azacytidine (a demethylating agent) and sodium butyrate (HDAC inhibitor) was able to restore hNIS mRNA expression in four cell lines and iodide transport in two of them. Investigation of methylation patterns in these cell lines revealed that successful restoration of hNIS transcription was associated with demethylation of hNIS DNA in the untranslated region within the first exon. However, when 23 human thyroid tumor samples were studied, analysis of DNA methylation in the three CpG-rich regions of hNIS failed to define specific methylation patterns associated with NIS transcriptional failure. Furthermore, although loss of this NIS expression corresponded with loss of radioiodide uptake, some thyroid carcinomas with positive hNIS mRNA expression did not concentrate iodide, suggesting additional post-transcriptional mechanisms for loss of hNIS function (86). Likewise, Neumann *et al.* observed a lack of correlation between NIS mRNA and protein expression and NIS promoter methylation in benign cold thyroid nodules (87).

NIS and breast cancer

During late pregnancy and lactation, active transport of iodide takes place in the mammary gland in order to provide an adequate supply of iodide to the newborn. This delivery of iodide is essential for sufficient thyroid hormone production and subsequent proper development of the newborn's nervous system, skeletal muscle, and lungs. Tazebay *et al.* characterized the NIS protein in the mammary gland (mgNIS), and demonstrated that NIS is exclusively present in the mammary gland during gestation and lactation but not in nonlactating mammary gland, in contrast with the constitutive expression of NIS in the thyroid (88). Although hormonal regulation of mgNIS is not well understood, estrogens, oxytocin, and prolactin seem to play an important role.

Towards the end of gestation, high levels of mgNIS expression and a substantial increase in $^{125}\text{I}^-$ transport are achieved, indicating that induction of mgNIS expression precedes suckling. Both prolactin and oxytocin, which are released simultaneously in response to suckling, enhance the expression of mgNIS after delivery. In fact, the combination of estrogen, prolactin, and oxytocin (in the absence of progesterone) led to the highest levels of mgNIS expression in ovariectomized mice that received a high amount of exogenous estrogen. Interestingly, estrogens need to be above a certain threshold for oxytocin and prolactin to enhance mgNIS expression, otherwise prolactin antagonizes the stimulatory effect of oxytocin and no NIS expression is observed (89). Accordingly, Cho *et al.* observed that radioiodide uptake into lactating mammary gland was partially inhibited by treatment with selective oxytocin antagonists or bromocriptine, suggesting that radioiodide uptake in the mammary gland is, at least in part, modulated by oxytocin and prolactin (90). In cultured mammary explants, other lactogenic hormones, such as insulin and cortisol have been proven to stimulate functional NIS expression (88).

Tazebay *et al.* also demonstrated, using *in vivo* scintigraphic imaging, functional mgNIS activity that could be inhibited by perchlorate in experimental mammary adenocarcinomas in nongestational and nonlactating female transgenic mice carrying either an activated *Ras* oncogene or overexpressing the *Neu* oncogene. Most importantly, they also examined human breast tissue specimens and found that 87% of the 23 invasive carcinomas and 83% of the six ductal carcinomas *in situ* expressed mgNIS, compared with only 23% of the 13 noncancerous samples adjacent to, or in the vicinity of, the tumors. In addition, none of eight normal samples from reductive mammoplasties expressed mgNIS. They detected both plasma membrane and intracellular staining in some malignant breast cells, in contrast with the distinct basolateral plasma membrane staining of rat lactating mammary gland tissues (88). Using immunohistochemical methods, Wapnir *et al.* studied NIS protein expression in 371 human breast samples. They found NIS positivity in 76% of invasive breast carcinomas, 88% of ductal carcinomas *in situ*, and 80% of fibroadenomas, whereas the majority of normal breast samples (87%) excluding gestational/lactational changes were negative. Both intracellular and plasma membrane immunoreactivity were observed in all types of breast cancer, although it was not quantified (65).

The high prevalence of mgNIS expression in human breast cancer (more than 80%) reported in the aforementioned studies indicates that mgNIS is upregulated with high frequency during malignant transformation of breast tumors, and therefore, has a potential diagnostic and therapeutic value. Moon *et al.* found that $^{99\text{m}}\text{Tc}$ -pertechnetate scintigraphy revealed positive uptake in 4 out of 25 patients with breast tumors that

further correlated with the mgNIS expression in the breast tumor (91). Furthermore, in another study, 27 women were scanned with $^{99m}\text{TcO}_4$ or $^{123}\text{I}^-$ to assess NIS activity in their breast carcinoma metastases. Thyroid suppression was implemented with T_3 . NIS expression was evaluated in index and/or metastatic tumor samples by IHC. Iodide uptake was noted in 25% of NIS-expressing tumors (two out of eight). The remaining cases did not show NIS expression or activity. The authors also estimated, by dosimetry, the feasibility of radioiodide ablation of metastases and proposed that T_3 /methimazole downregulation of thyroidal NIS makes $^{131}\text{I}^-$ radioablation of breast carcinoma metastases possible with negligible thyroid uptake and radiation damage (92).

In conclusion, although more extensive studies in humans are necessary, functional expression of endogenous NIS in breast cancer and its metastases has been documented in both experimental mice and humans. These findings have a tremendous potential for the use of radioiodide in the diagnosis and treatment of breast cancer, as discussed later.

Induction of endogenous NIS in breast cancer

Not only the nonselective *t*RA, but also isoform-selective RAR agonists have been investigated in breast cancer in order to reinduce endogenous and functional NIS expression. *t*RA stimulates NIS gene expression and iodide uptake in the estrogen receptor (ER)-positive human breast cancer cell line MCF-7. Moreover, systemic *t*RA treatment of immunodeficient mice with MCF-7 cell xenografts markedly stimulated NIS expression and iodide uptake (93). However, lack of sufficient iodide retention and the potential toxicity of *t*RA due to the high doses required, led the same authors to investigate additional agents to enhance NIS expression. On the one hand, they observed that an isoform-selective retinoid, RAR- β/γ agonist combined with 9-*cis* RA, an RXR agonist, were more efficient and had less adverse effects than nonselective retinoids. On the other hand, dexamethasone significantly enhanced RA-induced NIS expression and cell-selective cytotoxicity of $^{131}\text{I}^-$ in MCF-7 cells. The authors concluded that the combination of RAR- β/γ selective agonist and dexamethasone synergistically increased iodide uptake and retention *in vitro*, reducing the effective dose of RA required and suggesting higher efficacy of $^{131}\text{I}^-$ treatment (94). Similar results concerning this synergistic interaction between dexamethasone and RA were also obtained by another group (95). Additionally, the cardiac homeobox transcription factor Nkx-2.5 seems to be involved in the RA-mediated induction of NIS in MCF-7 cells and can also induce NIS expression and iodide uptake by itself (96). Dohan *et al.* reported that not only hydrocortisone, but also

isobutylmethylxanthine (IBMX), a phosphodiesterase inhibitor, markedly stimulated *t*RA-induced NIS protein expression and plasma membrane targeting in MCF-7 cells. Interestingly, the stimulatory effect of IBMX on NIS expression was not mediated by phosphodiesterase inhibition but by purinergic signaling. By contrast, neither iodide nor cAMP had a significant effect on NIS expression in MCF-7 (97). Overall, further insights are needed to understand the regulatory factors of NIS expression in mammary cells, which markedly differ from the thyroid. Therapeutic efficacy in breast cancer based on radioiodide will likely depend on manipulating NIS regulation.

NIS in other tissues

Despite the high specificity of thyroid uptake, radioiodine concentration has been demonstrated in a variety of nonthyroidal tissues, including salivary and lacrimal glands, stomach, choroid plexus, ciliary body of the eye, skin, placenta, lactating mammary gland, and thymus. Iodide transport in nonthyroidal tissues is known to be mediated by an active iodide translocating system that maintains an iodide gradient between secreted fluid and serum (96). Thyroidal and nonthyroidal iodide transport activities share several functional similarities, such as inhibition by thiocyanate and perchlorate as well as generation of iodide concentration gradients of similar magnitude. However, nonthyroidal tissues do not transport in a TSH-dependent manner and do not have the ability to organify accumulated iodide (with the possible exception of the lactating mammary gland where iodide is organified by binding to caseins and other milk proteins in correlation with peroxidase activity) (98).

The placenta transfers iodide and small amounts of thyroid hormones from mother to fetus. The molecular mechanisms of iodide transport from mother to fetus are not clear. Several groups demonstrated NIS expression in normal human placenta, preferentially in cytotrophoblast cells (99, 100). NIS is also expressed in the JAr choriocarcinoma cell line and the iodide transport in these cells appears to be regulated by human chorionic gonadotropin (hCG), which exerts its effects on iodide uptake through the stimulation of both NIS mRNA and protein expression (101). The BeWo choriocarcinoma cell line not only expresses NIS and accumulates iodide, but also this transporter is located in the apical (maternal) membrane of the cells, consistent with functional studies in bicameral chambers. Moreover, this cell line also expresses pendrin, and efflux of iodide occurs through a DIDS (a nonspecific inhibitor of anion exchangers including pendrin)-sensitive anion exchanger. Based on these results, the authors hypothesize that the trophoblast accumulates iodide through NIS and releases it to the fetal compartment through pendrin (102).

Accumulation of radioiodine by salivary and lacrimal glands and the gastrointestinal tract, including gastric mucosa and colon, is a common finding when performing whole body scintigraphy in patients with thyroid cancer after thyroidectomy (103) and may play a role in some of the dose-related side-effects associated with radioiodine therapy (104). In the salivary and lacrimal glands, NIS protein has been detected in the basolateral membrane of all ductal epithelial cells (105, 106). Similarly, NIS immunoreactivity has been detected in the basolateral membrane of mucin-secreting epithelial cells in the gastric mucosa and in the basolateral membrane of the epithelial cells lining mucosal crypts in the colon mucosa (106). This suggests that NIS is involved in active iodine transport from the serum to the secreted fluid of these exocrine glands and in the pathogenesis of salivary, lacrimal, and gastrointestinal dysfunction following radioiodine therapy. In addition, it has been postulated that inorganic iodide secreted by these exocrine glands to their corresponding mucosa followed by oxidation to hypoiodite may act as an antimicrobial agent, offering mucosal protection against environmental microorganisms (106). However, one important question remains to be elucidated: whether NIS is involved in the absorption of iodide by the gastrointestinal tract, as NIS has not been found in the apical membrane of the epithelial cells of the gastrointestinal tract.

As expected, NIS has been detected in clinically known iodide transporting tissues, namely thyroid, salivary gland, and stomach. Surprisingly, in a large survey using IHC methods, the following tissues were found to express NIS: bladder mucosa, endometrial glands, renal distal and collecting tubules, bronchial epithelium, intrahepatic bile canaliculi, gallbladder mucosa cells, prostate epithelium, and pancreatic exocrine cells. Immunoreactivity was particularly strong in the endometrium, bladder, kidney, and bile canaliculi. Additional tissues were found to have NIS expression, although it was not constant: adrenal, epididymis, and small bowel (65). In the same study, NIS was also found in carcinomas involving the following organs: bladder, cervix, oropharynx, colon, lung, pancreas, prostate, skin including melanoma, stomach, ovary, and endometrium. In the vast majority of these tumors, NIS was detected predominantly in the intracellular compartment and the expression was weak compared with thyroid and breast cancer where NIS immunoreactivity is intense and seemingly overexpressed. Although the authors did not find NIS immunoreactivity in normal lung alveolar tissue, cervix, esophagus, ovary, spleen, and skin, 46–68% of the corresponding malignant tissues demonstrated weak immunoreactivity (65). More studies are needed to confirm these interesting results and to elucidate the mechanisms underlying the expression of NIS during the malignant transformation of these carcinomas.

NIS gene transfer

One of the most promising areas in NIS research is the possibility of using NIS as a novel therapeutic gene in human cancer in order to extend the use of radioiodide therapy to nonthyroidal cancer. Indeed, NIS has been successfully transferred to several cancer cell lines enabling these cells to concentrate iodide. Since Shimura and coworkers transfected successfully rat NIS cDNA into malignant transformed rat thyroid cells (FRTL-Tc) that ordinarily do not show iodide transport activity (107), a large body of evidence has shown the feasibility of inducing functional NIS expression in extrathyroidal tumors or its restoration in undifferentiated thyroid malignancies. NIS has been transferred into carcinoma cell lines derived from cervix cancer (108), breast cancer (108, 109), glioma (110), hepatoma (111), prostate carcinoma (112–114), non-small cell lung cancer (115), follicular thyroid carcinoma (116), myeloma (117), ovarian cancer (118), and pancreatic cancer (119). Table 1 summarizes all these studies, which have been extensively reviewed elsewhere (120, 121).

However, enabling cells to concentrate radioiodide is not sufficient. Radioiodide must be retained long enough to exert its cytotoxic effect, and the real challenge is to overcome the lack of therapeutic efficacy of accumulated radioiodide in cancer cells. This can be apparently attributed to the rapid radioisotope efflux observed. The radiation dose necessary to have a discernible therapeutic effect is not achieved because of the insufficient retention time of radioiodide ($^{131}\text{I}^-$) in the tumor (a few hours) in contrast with the long half-life (8 days) of this isotope. Several approaches have been proposed to overcome this problem. Boland *et al.* used modified vectors and/or higher viral doses to improve the efficiency, yet this does not seem to be plausible for therapeutic purposes because of toxicity (108). Contradictory data concerning lithium salts, increasing the effective half-life of radioiodide in one study (122) but not in another (111), points to the need of more studies to confirm further the practical use of this pharmacological approach. For their part, Smit *et al.* decided to modify iodide environmental conditions of nude mice by using a low-iodide diet and thyroid ablation (116). The short half-life of iodide in NIS-transfected tumors could only be partially improved under these conditions. Stimulating the organification process is another approach aimed at expanding the retention time of iodide inside the cell. In fact, many authors are skeptical about NIS gene transfer into nonthyroidal tumors as these are unable to organify and, thus, retain iodide. As has been explained before, the thyroid is the only tissue known to organify iodide to a significant extent. Iodide organification is the covalent incorporation of iodide into selected tyrosyl residues of the Tg molecule and, thus, causes radioiodide to be retained within the gland for several days. TPO is the enzyme responsible for iodide organification. Huang *et al.* cotransfected non-small cell lung cancer cells with

Table 1 Main studies based on *NIS* gene therapy.

Author	Year	Tumor cell lines	Observations
Shimura <i>et al.</i>	1997	Transformed rat thyroid cells (FRTL-Tc)	Use of eukaryotic expression vector under CMV promoter. Lack of retention, low absorbed dose and tumor unresponsiveness
Mandell <i>et al.</i>	1999	Melanoma (A375), liver (BNL.1 ME), colon (CT26), ovarian (IGROV)	Use of a retroviral vector under SV40 promoter. Only imaging.
Cho <i>et al.</i>	2000	Glioma (F98)	Use of retroviral vector under LTR promoter. Intracerebral brain tumor model.
Boland <i>et al.</i>	2000	Cervix (SiHa), prostate (DU 145 and PC-3), breast (MCF-7 T-47D), lung (A549), and colon cancer (HT-29)	Use of Ad. vector under CMV promoter. Intratumoral injection <i>in vivo</i> . Only imaging.
Nakamoto <i>et al.</i>	2000	Breast (MCF-7)	Use of eukaryotic expression vector. Only imaging
Spitzweg <i>et al.</i>	2000	Prostate adenocarcinoma (LNCaP)	Use of eukaryotic expression vector under prostate-specific antigen (PSA) promoter.
Groot-Wassink <i>et al.</i>	2002	Human pancreatic adenocarcinoma (HPAF)	Ad. vector under CMV promoter. Positron emission tomography (PET) imaging using ¹²⁴ I
Smit <i>et al.</i>	2002	Follicular thyroid carcinoma (FTC 133)	Eukaryotic expression vector under CMV promoter. Radioiodine kinetics improved by conventional conditioning with thyroid ablation and low-iodide diet
Sieger <i>et al.</i>	2003	Hepatoma (MH3924A)	Use of the retroviral vector under glucose transporter 1 gene (GTI-1.3) promoter
Haberkon <i>et al.</i>	2003	Rat prostate adenocarcinoma (Dunning R3327subline AT1)	Retroviral vector under the elongation factor 1 α (EF1- α) promoter. Associated with lack of retention, low absorbed dose and tumor unresponsiveness.
Dingli <i>et al.</i>	2003	Myeloma (KAS-6/1 and MM1).	Use of self-inactivating (SIN) lentiviral vector under minimal immunoglobulin promoter
Faivre <i>et al.</i>	2004	Model of hepatocarcinoma induced by diethylnitrosamine in immunocompetent Wistar rats	Ad. vector under CMV promoter injected in the portal vein
Shen <i>et al.</i>	2004	Glioma (F98)	Rhenium, a potent β (-) emitter, is more efficient than ¹³¹ I to enhance survival.
Dwyer <i>et al.</i>	2005	Breast cancer (MDA-MB-231)	Ad. vector under MUC1 promoter. Intratumoral injection <i>in vivo</i>
Dwyer <i>et al.</i>	2005	Preclinical large animal model (dogs) of locally recurrent prostate cancer	Direct intraprostatic injection of Ad. vector under de CMV promoter.
Cengic <i>et al.</i>	2005	Medullary thyroid carcinoma (TT)	Use of calcitonin promoter. Only <i>in vitro</i> study.
Scholz <i>et al.</i>	2005	Colon carcinoma (HCT 116)	Use of carcinoembryonic antigen (CEA) promoter. Only <i>in vitro</i> study
Dwyer <i>et al.</i>	2006	Ovarian cancer (OVCAR-3)	Use of CMV promoter better than MUC1 promoter. Intratumoral injection <i>in vivo</i>
Dwyer <i>et al.</i>	2006	Pancreatic cancer (Capan 2)	Ad. vector under MUC1 promoter. Intratumoral injection <i>in vivo</i>

CMV, cytomegalovirus; LTR, long terminal repeat; Ad., adenoviral.

human *NIS* and *TPO* genes. This strategy led to increases in radioiodide uptake and retention, and proved promising (115). By contrast, Boland *et al.* did not obtain a significant increase in the iodide retention time in SiHa human cervix tumor cells, even though the production of an enzymatically active TPO was tested and a significant increase in iodide organification was observed in the targeted cells (123). Furuya *et al.* transferred both TITF-1 and *NIS* using adenoviral vectors into poorly differentiated human thyroid cells and achieved significantly induced iodide retention and organification in tumors formed in nude mice. Transfection of TITF-1 alone induced reexpression of TPO and Tg, but not *NIS* expression (124).

That iodide organification is a prerequisite for radioiodide retention is quite arguable, since several groups

have recently demonstrated good responses to radioiodide therapy in tumor cells lacking organification. The use of tissue-specific promoters appears to be an important breakthrough in order to improve the overall outcomes in the current studies. Spitzweg *et al.* obtained excellent results by stably transfecting the human prostate adenocarcinoma cell line LNCaP with *NIS* cDNA under the control of the prostate-specific antigen (PSA) promoter. However, the authors used a dose of 3 mCi of ¹³¹I⁻ per mouse to achieve tumor reduction, higher than the doses used in the previous studies (114). A lower dose (1 mCi) was used by the same group in *NIS*-transfected myeloma in nude mice based on biodistribution results. They used an immunoglobulin promoter and enhancer elements in a self-inactivating (SIN) lentiviral vector leading to a specific and high-level

transgene expression in myeloma cells. Myeloma is a very radiosensitive malignancy and, concordantly, a complete eradication of tumor xenografts was observed. Furthermore, the authors studied the percentage of nontransduced cells and all of them were killed by electrons emitted by $^{131}\text{I}^-$ from distant cells, the so-called 'bystander effect' (125). The same group also found a therapeutic effect of $^{131}\text{I}^-$ in colon carcinoma and medullary thyroid carcinoma cell lines following induction of tumor-specific iodide uptake activity by CEA and calcitonin promoter-directed NIS expression respectively, although these studies were only carried out *in vitro* (126). Another promoter of the *MUC1* gene (encoding a transmembrane glycoprotein) seems to be more versatile, as it is overexpressed in many tumor types, including breast, pancreatic and ovarian tumors. Indeed, a 58-fold increase in iodide uptake using $^{123}\text{I}^-$, and an 83% reduction in tumor volume after a therapeutic dose of $^{131}\text{I}^-$ was observed in infected *MUC1*/NIS-positive breast cancer tumor xenografts (109). In pancreatic tumor xenografts, administration of therapeutic doses of $^{131}\text{I}^-$ resulted in significant regression of *MUC1*/NIS transduced tumors, with a mean 50% reduction in volume within 10 weeks of therapy. Interestingly, intravenous injection of Ad5/CMV/NIS resulted in robust iodide uptake throughout mouse liver, whereas no uptake was detected in the liver of animals given Ad5/*MUC1*/NIS intravenously (119). However, in ovarian cancer xenografts, $^{123}\text{I}^-$ imaging revealed a clearly less intense image and a lack of tumor reduction after a therapeutic dose of $^{131}\text{I}^-$ in *MUC1*/NIS-transduced tumors. By contrast, a 53% reduction in tumor volume was seen in CMV/NIS-transduced tumors (118).

A surprising study by Faivre *et al.* has provided new insights, as they used an animal model completely different from the conventional tumor-xenografted nude mice. They used an aggressive model of hepatocarcinoma induced by diethylnitrosamine in immunocompetent Wistar rats. After portal vein injection of an adenoviral vector containing the cytomegalovirus promoter (Ad-CMV-rNIS), they obtained marked and sustained (>11 days) iodide uptake as well as strong inhibition of tumor growth and prolonged survival of hepatocarcinoma-bearing rats after radioiodide treatment. Although they observed a massive iodide efflux *in vitro* in human hepatic tumor cell lines, the sustained iodide uptake *in vivo* was attributed to permanent recycling of the effluent radioiodide via the high hepatic blood flow, and not to an active retention mechanism. They supported this idea *in vivo* through the specific inhibition of NIS by sodium perchlorate that led to a rapid iodide efflux from the liver (127). Another promising study by Dwyer and coworkers demonstrated the successful introduction of localized and functional NIS expression in the prostate gland of dogs with locally recurrent prostate cancer using adenovirus-mediated NIS expression under the control of the CMV promoter.

No vector-related toxicity was observed, providing further evidence of the safety and efficacy of NIS as a therapeutic gene. This study was carried out in preparation for a phase I clinical trial for prostate cancer (113).

Finally, positron emission tomography (PET), a high-resolution imaging modality useful for *in vivo* imaging, can be used in NIS-transduced tumors using ^{124}I , an isotope that emits positrons. PET combined with computerized tomography has a ten times higher resolution than conventional imaging and permits precise anatomical localization. In an attempt to develop this promising approach, two studies have demonstrated that hNIS expression in tumor xenograft models can be monitored by PET after intravenous injection of ^{124}I , demonstrating the potential of this approach for noninvasive imaging (128, 129).

Overall, compared with other genes used in gene therapy, NIS offers the unique advantage that it can be used both as a reporter and as a therapeutic gene. NIS gene transfer makes it possible to image, monitor and treat the tumor with radioiodide, just as in differentiated thyroid cancer.

Alternative NIS-transported radioisotopes

Rhenium (Re) is a chemical analog of Technetium (Tc) and chemical and biodistribution properties are practically identical to those of Tc. Dadachova *et al.* have recently proposed the use of ^{188}Re for the treatment of NIS-expressing tumors (130). ^{188}Re is a powerful β -emitting radionuclide with a 16.7-h half-life, which is effective over a higher tissue range (23–32 mm), meaning that ^{188}Re can be used for treatment of relatively large tumors. Dosimetry calculations carried out by the same group indicate that in the absence of organification, ^{188}Re -perrhenate delivers a 4.5-fold higher dose to a 2 g tumor in a human than ^{131}I . Encouraging therapy results have been reported in hNIS-transfected hepatocarcinoma cells (131) and in hNIS-expressing glioma tumors in rats (132).

Astatine (^{211}At) is an α -emitting radiohalide with a very high-linear energy, which makes its relative biological efficiency close to maximal, and a short tissue range (60 μm). Several reports have tested this radioisotope in NIS-expressing cancer cell lines (133–135). However, its scarce availability and nontrivial safety issues in production and handling makes this alternative NIS-transported radioisotope unsuitable at present.

Conclusion

As discussed throughout this article, NIS research extends from detailed molecular characterization and

elucidation of regulatory processes at several levels of the follicular thyroid cell, to novel medical applications in human malignancies. NIS has turned out to be a versatile molecule that is expressed and regulated differently in several extra thyroidal tissues, including the breast – and this can be effectively transferred to a wide variety of cancers, from prostate to glioma that do not express NIS endogenously, providing the basis for a novel cyto-reductive gene therapy strategy.

Acknowledgements

We are grateful to Ministerio de Educación y Ciencia (Grant BFU 2004-03 169) and Instituto de Salud Carlos III (Grants FIS: RCMN (C03/08), RCGC, C03/10, and PI 041216), Spain for supporting our work. G Riesco-Eizaguirre is recipient of a Grant for MD training from FIS, Instituto de Salud Carlos III (Spain).

References

- Baumann E. Über den Jodgehalt der Schilddrüsen von Menschen und Tieren. *Hoppe-Seyler's Zeitschrift für Physiologische Chemie* 1986 **22** 1–17.
- Hertz S, Roberts A & Salter WT. Radioactive iodine as an indicator in thyroid physiology. IV. The metabolism of iodine in Graves' disease. *Journal of Clinical Investigation* 1942 **21** 25.
- Hertz S & Roberts A. Application of radioactive iodine in therapy of Graves' disease. *Journal of Clinical Endocrinology* 1942 **21** 624.
- Dai G, Levy O & Carrasco N. Cloning and characterization of the thyroid iodide transporter. *Nature* 1996 **379** 458–460.
- Smanik PA, Liu Q, Furminger TL, Ryu K, Xing S, Mazzaferri EL & Jhian SM. Cloning of the human sodium iodide symporter. *Biochemical and Biophysical Research Communications* 1996 **226** 339–345.
- Dohan O, De la Vieja A, Paroder V, Riedel C, Artani M, Reed M, Ginter CS & Carrasco N. The sodium/iodide symporter (NIS): characterization, regulation, and medical significance. *Endocrine Reviews* 2003 **24** 48–77.
- Scott DA, Wang R, Kreman TM, Sheffield VC & Karniski LP. The pendred syndrome gene encodes a chloride-iodide transport protein. *Nature Genetics* 1999 **21** 440–443.
- Paroder V, Spencer SR, Paroder M, Arango D, Schwartz S Jr, Mariadason JM, Augenlicht LH, Eskandari S & Carrasco N. Na(+)/monocarboxylate transport (SMCT) protein expression correlates with survival in colon cancer: molecular characterization of SMCT. *PNAS* 2006 **103** 7270–7275.
- De Deken X, Wang D, Many MC, Costagliola S, Libert F, Vassart G, Dumont JE & Miot F. Cloning of two human thyroid cDNAs encoding new members of the NADPH oxidase family. *Journal of Biological Chemistry* 2000 **275** 23227–23233.
- Levy O, Dai G, Riedel C, Ginter CS, Paul EM, Lebowitz AN & Carrasco N. Characterization of the thyroid Na⁺/I⁻ symporter with an anti-COOH terminus antibody. *PNAS* 1997 **94** 5568–5573.
- Levy O, De la Vieja A, Ginter CS, Riedel C, Dai G & Carrasco N. N-linked glycosylation of the thyroid Na⁺/I⁻ symporter (NIS). Implications for its secondary structure model. *Journal of Biological Chemistry* 1998 **273** 22657–22663.
- Riedel C, Levy O & Carrasco N. Post-transcriptional regulation of the sodium/iodide symporter by thyrotropin. *Journal of Biological Chemistry* 2001 **276** 21458–21463.
- Weiss SJ, Philp NJ, Ambesi-Impiombato FS & Grollman EF. Thyrotropin-stimulated iodide transport mediated by adenosine 3', 5'-monophosphate and dependent on protein synthesis. *Endocrinology* 1984 **114** 1099–1107.
- Nissim M, Lee KO, Petrick PA, Dahlberg PA & Weintraub BD. A sensitive thyrotropin (TSH) bioassay based on iodide uptake in rat FRTL-5 thyroid cells: comparison with the adenosine 3', 5'-monophosphate response to human serum TSH and enzymatically deglycosylated bovine and human TSH. *Endocrinology* 1987 **121** 1278–1287.
- Kogai T, Endo T, Saito T, Miyazaki A, Kawaguchi A & Onaya T. Regulation by thyroid-stimulating hormone of sodium/iodide symporter gene expression and protein levels in FRTL-5 cells. *Endocrinology* 1997 **138** 2227–2232.
- Ohno M, Zannini M, Levy O, Carrasco N & Di Lauro R. The paired-domain transcription factor Pax-8 binds to the upstream enhancer of the rat sodium/iodide symporter gene and participates in both thyroid-specific and cyclic-AMP-dependent transcription. *Molecular and Cellular Biology* 1999 **19** 2051–2060.
- Paire A, Bernier-Valentin F, Selmi-Ruby S & Rousset B. Characterization of the rat thyroid iodide transporter using anti-peptide antibodies. Relationship between its expression and activity. *Journal of Biological Chemistry* 1997 **272** 18245–18249.
- Wolff J & Chaikoff I. Plasma inorganic iodide as a homeostatic regulator of thyroid function. *Journal of Biological Chemistry* 1948 **174** 555–564.
- Wolff J, Chaikoff I, Goldberg R & Meier J. The temporary nature of the inhibitory action of excess iodide on organic iodide synthesis in the normal thyroid. *Endocrinology* 1949 **45** 504.
- Grollman E, Smolar A, Ommaya A, Tombaccini D & Santisteban P. Iodine suppression of iodide uptake in FRTL-5 thyroid cells. *Endocrinology* 1986 **118** 2477–2482.
- Eng PH, Cardona GR, Fang SL, Previti M, Alex S, Carrasco N, Chin WW & Braverman LE. Escape from the acute Wolff-Chaikoff effect is associated with a decrease in thyroid sodium/iodide symporter messenger ribonucleic acid and protein. *Endocrinology* 1999 **140** 3404–3410.
- Eng P, Cardona G, Previti M, Chin W & Braverman L. Regulation of the sodium iodide symporter by iodide in FRTL-5 cells. *European Journal of Endocrinology* 2001 **144** 139–144.
- Spitzweg C, Joba W, Morris JC & Heufelder AE. Regulation of sodium iodide symporter gene expression in FRTL-5 rat thyroid cells. *Thyroid* 1999 **9** 821–830.
- Ajjan RA, Watson PF, Findlay C, Metcalfe RA, Crisp M, Ludgate M & Weetman AP. The sodium iodide symporter gene and its regulation by cytokines found in autoimmunity. *Journal of Endocrinology* 1998 **158** 351–358.
- Pekari AE & Hersham JM. Tumor necrosis factor, ceramide, transforming growth factor-beta1, and aging reduce Na⁺/I⁻ symporter messenger ribonucleic acid levels in FRTL-5 cells. *Endocrinology* 1998 **139** 703–712.
- Pekari AE, Levin SR, Johnson DG, Berg L & Hersham JM. Tumor necrosis factor-alfa (TNF-alfa) and transforming growth factor-beta1 (TGF-beta1) inhibit the expression and activity of Na⁺/K⁺ATPase in FRTL-5 rat thyroid cells. *Journal of Interferon and Cytokine Research* 1997 **4** 185–195.
- Caturegli P, Hejazi M, Suzuki K, Dohan O, Carrasco N & Kohn LD. Hypothyroidism in transgenic mice expressing IFN-gamma in the thyroid. *PNAS* 2000 **97** 1719–1724.
- Garcia B & Santisteban P. PI3K is involved in the IGF-I inhibition of TSH-induced sodium/iodide symporter gene expression. *Molecular Endocrinology* 2002 **16** 342–352.
- Ulianich L, Suzuki K, Mori A, Nakazato M, Pietrarello M, Goldsmith P, Pacifico F, Consiglio E, Formisano S & Kohn LD. Follicular thyroglobulin (TG) suppression of thyroid-restricted genes involves the apical membrane asialoglycoprotein receptor and TG phosphorylation. *Journal of Biological Chemistry* 1999 **274** 25099–25107.

- 30 Suzuki K, Mori A, Saito J, Moriyama E, Ulianich L & Kohn LD. Follicular thyroglobulin suppresses iodide uptake by suppressing expression of the sodium/iodide symporter gene. *Endocrinology* 1999 **140** 5422–5430.
- 31 Furlanetto TW, Nguyen LQ & Jameson JL. Estradiol increases proliferation and down-regulates the sodium/iodide symporter gene in FRTL-5 cells. *Endocrinology* 1999 **140** 5705–5711.
- 32 Armstrong R, Wen W, Meinkoth J, Taylor S & Montminy M. A refractory phase in cyclic AMP-responsive transcription requires down regulation of protein kinase A. *Molecular and Cellular Biology* 1995 **15** 1826–1832.
- 33 Taki K, Kogai T, Kanamoto Y, Hershman JM & Brent GA. A thyroid-specific far-upstream enhancer in the human sodium/iodide symporter gene requires Pax-8 binding and cyclic adenosine 3', 5'-monophosphate response element-like sequence binding proteins for full activity and is differentially regulated in normal and thyroid cancer cells. *Molecular Endocrinology* 2002 **16** 2266–2282.
- 34 Iacovelli L, Capobianco L, Salvatore L, Sallèse M, D'Ancona GM & De Blasi A. Thyrotropin activates mitogen-activated protein kinase pathway in FRTL-5 by a cAMP-dependent protein kinase A-independent mechanism. *Molecular Pharmacology* 2001 **60** 924–933.
- 35 Chun JT, Di Dato V, D'Andrea B, Zannini M & Di Lauro R. The CRE-like element inside the 5'-upstream region of the rat sodium/iodide symporter gene interacts with diverse classes of b-Zip molecules that regulate transcriptional activities through strong synergy with Pax-8. *Molecular Endocrinology* 2004 **18** 2817–2829.
- 36 Correze C, Blondeau JP & Pomerance M. The thyrotropin receptor is not involved in the activation of p42/p44 mitogen-activated protein kinases by thyrotropin preparations in Chinese hamster ovary cells expressing the human thyrotropin receptor. *Thyroid* 2000 **10** 747–752.
- 37 Medina DL & Santisteban P. Thyrotropin-dependent proliferation of *in vitro* rat thyroid cell systems. *European Journal of Endocrinology* 2000 **143** 161–178.
- 38 Pomerance M, Abdullah HB, Kamerji S, Correze C & Blondeau JP. Thyroid-stimulating hormone and cyclic AMP activate p38 mitogen-activated protein kinase cascade. Involvement of protein kinase A, rac1, and reactive oxygen species. *Journal of Biological Chemistry* 2000 **275** 40539–40546.
- 39 Cass LA & Meinkoth JL. Ras signaling through PI3K confers hormone-independent proliferation that is compatible with differentiation. *Oncogene* 2000 **19** 924–932.
- 40 Costamagna E, Garcia B & Santisteban P. The functional interaction between the paired domain transcription factor Pax8 and Smad3 is involved in transforming growth factor-beta repression of the sodium/iodide symporter gene. *Journal of Biological Chemistry* 2004 **279** 3439–3446.
- 41 Lazzaro D, Price M, de Felice M & Di Lauro R. The transcription factor TTF-1 is expressed at the onset of thyroid and lung morphogenesis and in restricted regions of the foetal brain. *Development* 1991 **113** 1093–1104.
- 42 Zannini M, Avantaggiato V, Biffali E, Arnone MI, Sato K, Pischetola M, Taylor BA, Phillips SJ, Simeone A & Di Lauro R. TTF-2, a new forkhead protein, shows a temporal expression in the developing thyroid which is consistent with a role in controlling the onset of differentiation. *EMBO Journal* 1997 **16** 3185–3197.
- 43 Plachov D, Chowdhury K, Walther C, Simon D, Guenet JL & Gruss P. Pax8, a murine paired box gene expressed in the developing excretory system and thyroid gland. *Development* 1990 **110** 643–651.
- 44 Czerny T, Schaffner G & Busslinger M. DNA sequence recognition by Pax proteins: bipartite structure of the paired domain and its binding site. *Genes and Development* 1993 **7** 2048–2061.
- 45 De Felice M, Damante G, Zannini M, Francis-Lang H & Di Lauro R. Redundant domains contribute to the transcriptional activity of the thyroid transcription factor 1. *Journal of Biological Chemistry* 1995 **270** 26649–26656.
- 46 Ikuyama S, Niller HH, Shimura H, Akamizu T & Kohn LD. Characterization of the 5'-flanking region of the rat thyrotropin receptor gene. *Molecular Endocrinology* 1992 **6** 793–804.
- 47 Ikuyama S, Shimura H, Hoeffler JP & Kohn LD. Role of the cyclic adenosine 3', 5'-monophosphate response element in efficient expression of the rat thyrotropin receptor promoter. *Molecular Endocrinology* 1992 **6** 1701–1715.
- 48 Endo T, Kaneshige M, Nakazato M, Ohmori M, Harii N & Onaya T. Thyroid transcription factor-1 activates the promoter activity of rat thyroid Na⁺/I⁻ symporter gene. *Molecular Endocrinology* 1997 **11** 1747–1755.
- 49 Ohmori M, Endo T, Harii N & Onaya T. A novel thyroid transcription factor is essential for thyrotropin-induced up-regulation of Na⁺/I⁻ symporter gene expression. *Molecular Endocrinology* 1998 **12** 727–736.
- 50 Xu J, Kogai T, Brent GA & Hershman JM. A GC box in the human sodium iodide symporter gene promoter is essential for full activity. *Thyroid* 2002 **12** 107–114.
- 51 Tonacchera M, Agretti P, de Marco G, Elisei R, Perri A, Ambrogini E, De Servi M, Ceccarelli C, Viacava P, Refetoff S, Panunzi C, Bitti ML, Vitti P, Chiovato L & Pinchera A. Congenital hypothyroidism due to a new deletion in the sodium/iodide symporter protein. *Clinical Endocrinology* 2003 **59** 500–506.
- 52 Pohlenz J, Medeiros-Neto G, Gross JL, Silveiro SP, Knobel M & Refetoff S. Hypothyroidism in a Brazilian kindred due to iodide trapping defect caused by a homozygous mutation in the sodium/iodide symporter gene. *Biochemical and Biophysical Research Communications* 1997 **240** 488–491.
- 53 Kosugi S, Inoue S, Matsuda A & Jhiang SM. Novel, missense and loss-of-function mutations in the sodium/iodide symporter gene causing iodide transport defect in three Japanese patients. *Journal of Clinical Endocrinology and Metabolism* 1998 **83** 3373–3376.
- 54 Kosugi S, Bhayana S & Dean HJ. A novel mutation in the sodium/iodide symporter gene in the largest family with iodide transport defect. *Journal of Clinical Endocrinology and Metabolism* 1999 **84** 3248–3253.
- 55 Fujiwara H, Tatsumi K, Tanaka S, Kimura M, Nose O & Amino N. A novel V59E missense mutation in the sodium iodide symporter gene in a family with iodide transport defect. *Thyroid* 2000 **10** 471–474.
- 56 Fujiwara H, Tatsumi K, Miki K, Harada T, Okada S, Nose O, Kodama S & Amino N. Recurrent T354P mutation of the Na⁺/I⁻ symporter in patients with iodide transport defect. *Journal of Clinical Endocrinology and Metabolism* 1998 **83** 2940–2943.
- 57 Levy O, Ginter CS, De la Vieja A, Levy D & Carrasco N. Identification of a structural requirement for thyroid Na⁺/I⁻ symporter (NIS) function from analysis of a mutation that causes human congenital hypothyroidism. *FEBS Letters* 1998 **429** 36–40.
- 58 De La Vieja A, Ginter CS & Carrasco N. The Q267E mutation in the sodium/iodide symporter (NIS) causes congenital iodide transport defect (ITD) by decreasing the NIS turnover number. *Journal of Cell Science* 2004 **117** 677–687.
- 59 De la Vieja A, Ginter CS & Carrasco N. Molecular analysis of a congenital iodide transport defect: G543E impairs maturation and trafficking of the Na⁺/I⁻ symporter. *Molecular Endocrinology* 2005 **19** 2847–2858.
- 60 Dohan O, Gavrielides MV, Ginter C, Amzel LM & Carrasco N. Na⁺/I⁻ symporter activity requires a small and uncharged amino acid residue at position 395. *Molecular Endocrinology* 2002 **16** 1893–1902.
- 61 Pohlenz J, Duprez L, Weiss RE, Vassart G, Refetoff S & Costagliola S. Failure of membrane targeting causes the functional defect of two mutant sodium iodide symporters. *Journal of Clinical Endocrinology and Metabolism* 2000 **85** 2366–2369.
- 62 Spitzweg C & Morris JC. The sodium iodide symporter: its pathophysiological and therapeutic implications. *Clinical Endocrinology* 2002 **57** 559–574.

- 63 Saito T, Endo T, Kawaguchi A, Ikeda M, Katoh R, Kawaoi A, Muramatsu A & Onaya T. Increased expression of the sodium/iodide symporter in papillary thyroid carcinomas. *Journal of Clinical Investigation* 1998 **101** 1296–1300.
- 64 Dohan O, Baloch Z, Banreji Z, Livolsi V & Carrasco N. Rapid communication: predominant intracellular overexpression of the Na^+/I^- symporter (NIS) in a large sampling of thyroid cancer cases. *Journal of Clinical Endocrinology and Metabolism* 2001 **86** 2697–2700.
- 65 Wapnir IL, van de Rijn M, Nowels K, Amenta PS, Walton K, Montgomery K, Greco RS, Dohan O & Carrasco N. Immunohistochemical profile of the sodium/iodide symporter in thyroid, breast, and other carcinomas using high density tissue microarrays and conventional sections. *Journal of Clinical Endocrinology and Metabolism* 2003 **88** 1880–1888.
- 66 Castro MR, Bergert ER, Goellner JR, Hay ID & Morris JC. Immunohistochemical analysis of sodium iodide symporter expression in metastatic differentiated thyroid cancer: correlation with radioiodine uptake. *Journal of Clinical Endocrinology and Metabolism* 2001 **86** 5627–5632.
- 67 Ward LS, Santarosa PL, Granja F, da Assumpcao LV, Savoldi M & Goldman GH. Low expression of sodium iodide symporter identifies aggressive thyroid tumors. *Cancer Letters* 2003 **200** 85–91.
- 68 Riesco-Eizaguirre G, Gutierrez-Martinez P, Garcia-Cabezas M, Nistal M & Santisteban P. The oncogene BRAF^{V600E} is associated with a high risk of recurrence and less differentiated papillary thyroid carcinoma due to the impairment of Na^+/I^- targeting to the membrane. *Endocrine-Related Cancer* 2006 **13** 257–269.
- 69 Santoro M, Melillo RM, Grieco M, Berlingieri MT, Vecchio G & Fusco A. The TRK and RET tyrosine kinase oncogenes cooperate with ras in the neoplastic transformation of a rat thyroid epithelial cell line. *Cell Growth and Differentiation* 1993 **4** 77–84.
- 70 Knauf JA, Ouyang B, Croyle M, Kimura E & Fagin JA. Acute expression of RET/PTC induces isozyme-specific activation and subsequent downregulation of PKCepsilon in PCCL3 thyroid cells. *Oncogene* 2003 **22** 6830–6838.
- 71 Mitsutake N, Knauf JA, Mitsutake S, Mesa C Jr, Zhang L & Fagin JA. Conditional BRAFV600E expression induces DNA synthesis, apoptosis, dedifferentiation, and chromosomal instability in thyroid PCCL3 cells. *Cancer Research* 2005 **65** 2465–2473.
- 72 Xing M, Westra WH, Tufano RP, Cohen Y, Rosenbaum E, Rhoden KJ, Carson KA, Vasko V, Larin A, Tallini G, Tolaney S, Holf EH, Hui P, Umbricht CB, Basaria S, Ewertz M, Tufano AP, Califano JA, Ringel MD, Zeiger MA, Sidransky D & Ladenson PW. BRAF mutation predicts a poorer clinical prognosis for papillary thyroid cancer. *Journal of Clinical Endocrinology and Metabolism* 2005 **90** 6373–6379.
- 73 Schmutzler C, Winzer R, Meissner-Weigl J & Kohrle J. Retinoic acid increases sodium/iodide symporter mRNA levels in human thyroid cancer cell lines and suppresses expression of functional symporter in nontransformed FRTL-5 rat thyroid cells. *Biochemical and Biophysical Research Communications* 1997 **240** 832–838.
- 74 Simon D, Korber C, Krausch M, Segering J, Groth P, Gorges R, Grunwald F, Muller-Gartner HW, Schmutzler C, Kohrle J, Roher HD & Reiners C. Clinical impact of retinoids in redifferentiation therapy of advanced thyroid cancer: final results of a pilot study. *European Journal of Nuclear Medicine and Molecular Imaging* 2002 **29** 775–782.
- 75 Marques AR, Espadinha C, Catarino AL, Moniz S, Pereira T, Sobrinho LG & Leite V. Expression of PAX8-PPAR gamma 1 rearrangements in both follicular thyroid carcinomas and adenomas. *Journal of Clinical Endocrinology and Metabolism* 2002 **87** 3947–3952.
- 76 Castro P, Rebocho AP, Soares RJ, Magalhaes J, Roque L, Trovisco V, Vieira de Castro I, Cardoso-de-Oliveira M, Fonseca E, Soares P & Sobrino-Simoes M. PAX8-PPARgamma rearrangement is frequently detected in the follicular variant of papillary thyroid carcinoma. *Journal of Clinical Endocrinology and Metabolism* 2006 **91** 213–220.
- 77 Park JW, Zarnegar R, Kanauchi H, Wong MG, Hyun WC, Ginzinger DG, Lobo M, Cotter P, Duh QY & Clark OH. Troglitazone, the peroxisome proliferator-activated receptor-gamma agonist, induces antiproliferation and redifferentiation in human thyroid cancer cell lines. *Thyroid* 2005 **15** 222–231.
- 78 Ohta K, Endo T, Haraguchi K, Hershman JM & Onaya T. Ligands for peroxisome proliferator-activated receptor gamma inhibit growth and induce apoptosis of human papillary thyroid carcinoma cells. *Journal of Clinical Endocrinology and Metabolism* 2001 **86** 2170–2177.
- 79 Marks P, Rifkind RA, Richon VM, Breslow R, Miller T & Kelly WK. Histone deacetylases and cancer: causes and therapies. *Nature Reviews Cancer* 2001 **1** 194–202.
- 80 Kitazono M, Robey R, Zhan Z, Sarlis NJ, Skarulis MC, Aikou T, Bates S & Fojo T. Low concentration of the histone deacetylase inhibitor, depsipeptide (FR901228), increases expression of the Na^+/I^- symporter and iodine accumulation in poorly differentiated thyroid carcinoma cells. *Journal of Clinical Endocrinology and Metabolism* 2001 **86** 3430–3435.
- 81 Furuya F, Shimura H, Suzuki H, Taki K, Ohta K, Haraguchi K, Onaya T, Endo T & Kobayashi T. Histone deacetylase inhibitors restore radioiodide uptake and retention in poorly differentiated and anaplastic thyroid cancer cells by expression of the sodium/iodide symporter thyroperoxidase and thyroglobulin. *Endocrinology* 2004 **145** 2865–2875.
- 82 Fortunati N, Catalano MG, Arena K, Brignardello E, Piovesan A & Boccuzzi G. Valproic acid induces the expression of the Na^+/I^- symporter and iodine uptake in poorly differentiated thyroid cancer cells. *Journal of Clinical Endocrinology and Metabolism* 2004 **89** 1006–1009.
- 83 Shen WT, Wong TS, Chung WY, Wong MG, Kebebew E, Duh QY & Clark OH. Valproic acid inhibits growth, induces apoptosis, and modulates apoptosis-regulatory and differentiation gene expression in human thyroid cancer cells. *Surgery* 2005 **138** 979–985.
- 84 Baylin SB. Tying it all together: epigenetics, genetics, cell cycle, and cancer. *Science* 1997 **277** 1948–1949.
- 85 Matsuo K, Tang SH, Zeki K, Gutman RA & Fagin JA. Aberrant deoxyribonucleic acid methylation in human thyroid tumors. *Journal of Clinical Endocrinology and Metabolism* 1993 **77** 991–995.
- 86 Venkataraman GM, Yatin M, Marcinek R & Ain KB. Restoration of iodide uptake in dedifferentiated thyroid carcinoma: relationship to human Na^+/I^- symporter gene methylation status. *Journal of Clinical Endocrinology and Metabolism* 1999 **84** 2449–2457.
- 87 Neumann S, Schuchardt K, Reske A, Reske A, Emmrich P & Paschke R. Lack of correlation for sodium iodide symporter mRNA and protein expression and analysis of sodium iodide symporter promoter methylation in benign cold thyroid nodules. *Thyroid* 2004 **14** 99–111.
- 88 Tazebay UH, Wapnir IL, Levy O, Dohan O, Zuckier LS, Zhao QH, Deng HF, Amenta PS, Fineberg S, Pestell RG & Carrasco N. The mammary gland iodide transporter is expressed during lactation and in breast cancer. *Nature Medicine* 2000 **6** 871–878.
- 89 Cho JY, Leveille R, Kao R, Rousset B, Parlow AF, Burak WE, Jr, Mazzaferri EL & Jhiang SM. Hormonal regulation of radioiodide uptake activity and Na^+/I^- symporter expression in mammary glands. *Journal of Clinical Endocrinology and Metabolism* 2000 **85** 2936–2943.
- 90 Rillema JA, Yu TX & Jhiang SM. Effect of prolactin on sodium iodide symporter expression in mouse mammary gland explants. *American Journal of Physiology, Endocrinology and Metabolism* 2000 **279** E769–E772.
- 91 Moon DH, Lee SJ, Park KY, Park KK, Ahn SH, Pai MS, Chang H, Lee HK & Ahn IM. Correlation between ^{99m}Tc-pertechnetate

- uptakes and expressions of human sodium iodide symporter gene in breast tumor tissues. *Nuclear Medicine and Biology* 2001 **28** 829–834.
- 92 Wapnir IL, Goris M, Yudd A, Dohan O, Adelman D, Nowels K & Carrasco N. The Na^+/I^- symporter mediates iodide uptake in breast cancer metastases and can be selectively down-regulated in the thyroid. *Clinical Cancer Research* 2004 **10** 4294–4302.
- 93 Kogai T, Kanamoto Y, Che LH, Taki K, Moatamed F, Schultz JJ & Brent GA. Systemic retinoic acid treatment induces sodium/iodide symporter expression and radioiodide uptake in mouse breast cancer models. *Cancer Research* 2004 **415** 422.
- 94 Kogai T, Kanamoto Y, Li AI, Che LH, Ohashi E, Taki K, Chandraratna RA, Saito T & Brent GA. Differential regulation of sodium/iodide symporter gene expression by nuclear receptor ligands in MCF-7 breast cancer cells. *Endocrinology* 2005 **146** 3059–3069.
- 95 Unterholzner S, Willhauck MJ, Cengic N, Schutz M, Goke B, Morris JC & Spitzweg C. Dexamethasone stimulation of retinoic acid-induced sodium iodide symporter expression and cytotoxicity of ^{131}I in breast cancer cells. *Journal of Clinical Endocrinology and Metabolism* 2006 **91** 69–78.
- 96 Dentice M, Luongo C, Elefante A, Romino R, Ambrosio R, Vitale M, Rossi G, Fenzi G & Salvatore D. Transcription factor Nkx-2.5 induces sodium/iodide symporter gene expression and participates in retinoic acid- and lactation-induced transcription in mammary cells. *Molecular and Cellular Biology* 2004 **18** 7863–7877.
- 97 Dohan O, De la Vieja A & Carrasco N. Hydrocortisone and purinergic signaling stimulate sodium/iodide symporter (NIS)-mediated iodide transport in breast cancer cells. *Molecular Endocrinology* 2006 **20** 1121–1137.
- 98 Carrasco N. Iodide transport in the thyroid gland. *Biochimica et Biophysica Acta* 1993 **1154** 65–82.
- 99 Mitchell AM, Manley SW, Morris JC, Powell KA, Bergert ER & Mortimer RH. Sodium iodide symporter (NIS) gene expression in human placenta. *Placenta* 2001 **22** 256–258.
- 100 Bidart JM, Lacroix L, Evain-Brion D, Caillou B, Lazar V, Frydman R, Bellet D, Filetti S & Schlumberger M. Expression of Na^+/I^- symporter and Pendred syndrome genes in trophoblast cells. *Journal of Clinical Endocrinology and Metabolism* 2000 **85** 4367–4372.
- 101 Arturi F, Lacroix L, Presta I, Scarpelli D, Caillou B, Schlumberger M, Russo D, Bidart JM & Filetti S. Regulation by human chorionic gonadotropin of sodium/iodide symporter gene expression in the JAr human choriocarcinoma cell line. *Endocrinology* 2002 **143** 2216–2220.
- 102 Manley SW, Li H & Mortimer RH. The BeWo choriocarcinoma cell line as a model of iodide transport by placenta. *Placenta* 2005 **26** 380–386.
- 103 McDougall IR. Whole-body scintigraphy with radioiodine-131. A comprehensive list of false-positives with some examples. *Clinical Nuclear Medicine* 1995 **20** 869–875.
- 104 Van Nostrand D, Neutze J & Atkins F. Side effects of 'rational dose' iodine-131 therapy for metastatic well-differentiated thyroid carcinoma. *Journal of Nuclear Medicine* 1986 **27** 1519–1527.
- 105 Vayre L, Sabourin JC, Caillou B, Ducreux M, Schlumberger M & Bidart JM. Immunohistochemical analysis of Na^+/I^- symporter distribution in human extra-thyroidal tissues. *European Journal of Endocrinology* 1999 **141** 382–386.
- 106 Spitzweg C, Joba W, Schriever K, Goellner JR, Morris JC & Heufelder AE. Analysis of human sodium iodide symporter immunoreactivity in human exocrine glands. *Journal of Clinical Endocrinology and Metabolism* 1999 **84** 4178–4184.
- 107 Shimura H, Haraguchi K, Miyazaki A, Endo T & Onaya T. Iodide uptake and experimental ^{131}I therapy in transplanted undifferentiated thyroid cancer cells expressing the Na^+/I^- symporter gene. *Endocrinology* 1997 **138** 4493–4496.
- 108 Boland A, Ricard M, Opolon P, Bidart JM, Yeh P, Filetti S, Schlumberger M & Perricaudet M. Adenovirus-mediated transfer of the thyroid sodium/iodide symporter gene into tumors for a targeted radiotherapy. *Cancer Research* 2000 **60** 3484–3492.
- 109 Dwyer RM, Bergert ER, O'Connor MK, Gendler SJ & Morris JC. *In vivo* radioiodide imaging and treatment of breast cancer xenografts after MUC1-driven expression of the sodium iodide symporter. *Clinical Cancer Research* 2005 **11** 1483–1489.
- 110 Cho JY, Xing S, Liu X, Buckwalter TL, Hwa L, Sferra TJ, Chiu IM & Jhiang SM. Expression and activity of human Na^+/I^- symporter in human glioma cells by adenovirus-mediated gene delivery. *Gene Therapy* 2000 **7** 740–749.
- 111 Sieger S, Jiang S, Schonsiegel F, Eskerski H, Kubler W, Altmann A & Haberkorn U. Tumour-specific activation of the sodium/iodide symporter gene under control of the glucose transporter gene 1 promoter (GTI-1.3). *European Journal of Nuclear Medicine and Molecular Imaging* 2003 **30** 748–756.
- 112 Haberkorn U, Kinscherf R, Kissel M, Kubler W, Mahmut M, Sieger S, Eisenhut M, Peschke P & Altmann A. Enhanced iodide transport after transfer of the human sodium iodide symporter gene is associated with lack of retention and low absorbed dose. *Gene Therapy* 2003 **10** 774–780.
- 113 Dwyer RM, Schatz SM, Bergert ER, Myers RM, Harvey ME, Classic KL, Blanco MC, Frisk CS, Marler RJ, Davis BJ, O'Connor MK, Russell SJ & Morris JC. A preclinical large animal model of adenovirus-mediated expression of the sodium-iodide symporter for radioiodide imaging and therapy of locally recurrent prostate cancer. *Molecular Therapy* 2005 **12** 835–841.
- 114 Spitzweg C, O'Connor MK, Bergert ER, Tindall DJ, Young CY & Morris JC. Treatment of prostate cancer by radioiodine therapy after tissue-specific expression of the sodium iodide symporter. *Cancer Research* 2000 **60** 6526–6530.
- 115 Huang M, Batra RK, Kogai T, Lin YQ, Hershman JM, Lichtenstein A, Sharma S, Zhu LX, Brent GA & Dubinett SM. Ectopic expression of the thyroperoxidase gene augments radioiodide uptake and retention mediated by the sodium iodide symporter in non-small cell lung cancer. *Cancer Gene Therapy* 2001 **8** 612–618.
- 116 Smit JW, Schroder-van der Elst JP, Karperien M, Que I, Stokkel M, van der Heide D & Romijn JA. Iodide kinetics and experimental (^{131}I) therapy in a xenotransplanted human sodium-iodide symporter-transfected human follicular thyroid carcinoma cell line. *Journal of Clinical Endocrinology and Metabolism* 2002 **87** 1247–1253.
- 117 Dingli D, Diaz RM, Bergert ER, O'Connor MK, Morris JC & Russell SJ. Genetically targeted radiotherapy for multiple myeloma. *Blood* 2003 **102** 489–496.
- 118 Dwyer RM, Bergert ER, O'Connor MK, Gendler SJ & Morris JC. Sodium iodide symporter-mediated radioiodide imaging and therapy of ovarian tumor xenografts in mice. *Gene Therapy* 2006 **13** 60–66.
- 119 Dwyer RM, Bergert ER, O'Connor MK, Gendler SJ & Morris JC. Adenovirus-mediated and targeted expression of the sodium/iodide symporter permits *in vivo* radioiodide imaging and therapy of pancreatic tumors. *Human Gene Therapy* 2006 **17** 661–668.
- 120 Spitzweg C, Harrington KJ, Pinke LA, Vile RG & Morris JC. Clinical review 132: the sodium iodide symporter and its potential role in cancer therapy. *Journal of Clinical Endocrinology and Metabolism* 2001 **86** 3327–3335.
- 121 Dadachova E & Carrasco N. The Na^+/I^- symporter (NIS): imaging and therapeutic applications. *Seminars in Nuclear Medicine* 2004 **34** 23–31.
- 122 Nakamoto Y, Saga T, Misaki T, Kobayashi H, Sato N, Ishimori T, Kosugi S, Sakahara H & Konishi J. Establishment and characterization of a breast cancer cell line expressing Na^+/I^- symporters for radioiodide concentrator gene therapy. *Journal of Nuclear Medicine* 2000 **41** 1898–1904.
- 123 Boland A, Magnon C, Filetti S, Bidart JM, Schlumberger M, Yeh P & Perricaudet M. Transposition of the thyroid iodide uptake and organification system in nonthyroid tumor cells by adenoviral vector-mediated gene transfers. *Thyroid* 2002 **12** 19–26.

- 124 Furuya F, Shimura H, Miyazaki A, Taki K, Ohta K, Haraguchi K, Onaya T, Endo T & Kobayashi T. Adenovirus-mediated transfer of thyroid transcription factor-1 induces radioiodide organification and retention in thyroid cancer cells. *Endocrinology* 2004 **145** 5397–5405.
- 125 Dingli D, Peng KW, Harvey ME, Greipp PR, O'Connor MK, Cattaneo R, Morris JC & Russell SJ. Image-guided radio-virotherapy for multiple myeloma using a recombinant measles virus expressing the thyroidal sodium iodide symporter. *Blood* 2004 **103** 1641–1646.
- 126 Scholz CengicN, IV, Baker CH, Harrington KJ, Maletz K, Bergert ER, Vile R, Goke B, Morris JC & Spitzweg C. Radioiodine therapy of colon cancer following tissue-specific sodium iodide symporter gene transfer. *Gene Therapy* 2005 **272** 280.
- 127 Faivre J, Clerc J, Gerolami R, Herve J, Longuet M, Liu B, Roux J, Moal F, Perricaudet M & Brechot C. Long-term radioiodine retention and regression of liver cancer after sodium iodide symporter gene transfer in wistar rats. *Cancer Research* 2004 **64** 8045–8051.
- 128 Dingli D, Kemp BJ, O'Connor MK, Morris JC, Russell SJ & Lowe VJ. Combined I-124 positron emission tomography/computed tomography imaging of NIS gene expression in animal models of stably transfected and intravenously transfected tumor. *Molecular Imaging and Biology* 2005 **8** 16–23.
- 129 Groot-Wassink T, Aboagye EO, Wang Y, Lemoine NR, Reader AJ & Vassaux G. Quantitative imaging of Na/I symporter transgene expression using positron emission tomography in the living animal. *Molecular Therapy* 2004 **9** 436–442.
- 130 Dadachova E, Bouzahzah B, Zuckier LS & Pestell RG. Rhenium-188 as an alternative to Iodine-131 for treatment of breast tumors expressing the sodium/iodide symporter (NIS). *Nuclear Medicine and Biology* 2002 **29** 13–18.
- 131 Kang JH, Chung JK, Lee YJ, Shin JH, Jeong JM, Lee DS & Lee MC. Establishment of a human hepatocellular carcinoma cell line highly expressing sodium iodide symporter for radionuclide gene therapy. *Journal of Nuclear Medicine* 2004 **45** 1571–1576.
- 132 Shen DH, Marsee DK, Schaap J, Yang W, Cho JY, Hinkle G, Nagaraja HN, Kloos RT, Barth RF & Jhiang SM. Effects of dose, intervention time, and radionuclide on sodium iodide symporter (NIS)-targeted radionuclide therapy. *Gene Therapy* 2004 **11** 161–169.
- 133 Lindencrona U, Nilsson M & Forssell-Aronsson E. Similarities and differences between free ^{211}At and ^{125}I -transport in porcine thyroid epithelial cells cultured in bicameral chambers. *Nuclear Medicine and Biology* 2001 **28** 41–50.
- 134 Carlin S, Mairs RJ, Welsh P & Zalutsky MR. Sodium-iodide symporter (NIS)-mediated accumulation of [^{211}At]astatide in NIS-transfected human cancer cells. *Nuclear Medicine and Biology* 2002 **29** 729–739.
- 135 Carlin S, Akabani G & Zalutsky MR. *In vitro* cytotoxicity of ^{211}At -astatide and ^{131}I -iodide to glioma tumor cells expressing the sodium/iodide symporter. *Journal of Nuclear Medicine* 2003 **44** 1827–1838.

Received 23 May 2006

Accepted 17 July 2006