

A Review of Fetal ECG Signal Processing; Issues and Promising Directions

Reza Sameni¹ and Gari D. Clifford^{2,3}

¹ School of Electrical & Computer Engineering, Shiraz University, Shiraz, Iran

² Institute of Biomedical Engineering, Department of Engineering Science,
University of Oxford, UK

³ Division of Sleep Medicine, Department of Medicine, Harvard University,
Boston, USA

Emails: rsameni@shirazu.ac.ir , gari.clifford@eng.ox.ac.uk

Abstract

The field of electrocardiography has been in existence for over a century, yet despite significant advances in adult clinical electrocardiography, signal processing techniques and fast digital processors, the analysis of fetal ECGs is still in its infancy. This is, partly due to a lack of availability of gold standard databases, partly due to the relatively low signal-to-noise ratio of the fetal ECG compared to the maternal ECG (caused by the various media between the fetal heart and the measuring electrodes, and the fact that the fetal heart is simply smaller), and in part, due to the less complete clinical knowledge concerning fetal cardiac function and development. In this paper we review a range of promising recording and signal processing techniques for fetal ECG analysis that have been developed over the last forty years, and discuss both their shortcomings and advantages. Before doing so, however, we review fetal cardiac development, and the etiology of the fetal ECG. A selection of relevant models for the fetal/maternal ECG mixture is also discussed. In light of current understanding of the fetal ECG, we then attempt to justify recommendations for promising future directions in signal processing, and database creation.

1 Introduction

Heart defects are among the most common birth defects and the leading cause of birth defect-related deaths [1, 2]. Every year, about one out of 125 babies are born with some form of congenital heart defects [3]. The defect may be so slight that the baby appears healthy for many years after birth, or so severe that its life is in immediate danger. Congenital heart defects originate in early stages of pregnancy when the heart is forming and they can affect any of the parts or functions of the heart. Cardiac anomalies may occur due to a genetic syndrome, inherited disorder, or environmental factors such as infections or drug misuse [4, 1]. However, except for during labor, fetal electrocardiography has not proved an effective tool for imaging specific structural defects. Rather, fetal electrocardiography has been confined to more global issues such as general ischemia due to specific fetal positioning that chokes the umbilical cord [5]. The reason for this limitation is that the noninvasive fetal electrocardiogram (ECG) is contaminated by fetal brain activity, myographic (muscle) signals (from both the mother and fetus), movement artifacts and multiple layers of different dielectric biological media through which the electrical signals must pass.

When continuous electronic fetal heart rate monitoring was introduced into clinical practice in the 1970s, there was enormous optimism that the widespread use of this technology would reduce the incidence of intra-partum fetal injury and death. Unfortunately, fetal heart rate monitoring has not lived up to its initial promise. A meta-analysis of nine randomized, controlled trials comparing fetal monitoring to intermittent auscultation of the fetal heart rate showed that current monitoring techniques increase the use of cesarean, forceps, and vacuum delivery, but do not reduce perinatal morbidity or mortality [6].

Since the advent of fetal heart rate monitoring 40 years ago, there have been no clinically significant advances in intra-partum fetal monitoring. Moreover, continuous fetal monitoring is utilized in over 85% of labor episodes in the United States, and represents the standard of care [7]. Fetal monitoring today is based entirely on the fetal heart rate and does not incorporate characteristics of the fetal ECG (fECG)

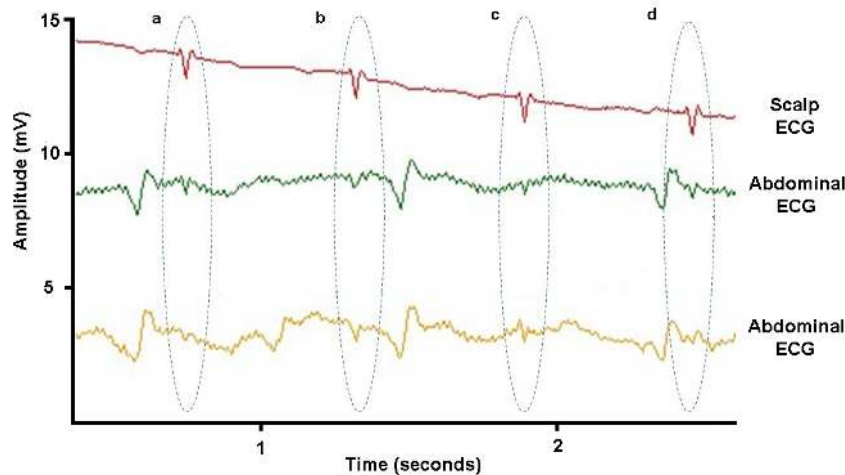


Figure 1: Fetal ECG recorded invasively (upper trace) through a fetal scalp electrode, and non-invasively (lower two traces) through electrodes placed on the mother’s abdomen. Fetal heart beats are circled and labeled a, b, c and d.

waveform characteristics that are the cornerstone of cardiac evaluation of both children and adults. The primary reason for the exclusion of this most critical source of information from clinical practice is that the technology to reliably measure fECG is largely unavailable. As a consequence, research correlating ECG characteristics to neonatal outcomes has not been done on a large scale.

Most cardiac defects have some manifestation in the morphology of cardiac electrical signals, which are recorded by electrocardiography and are believed to contain much more information as compared with conventional sonographic methods [8]. However, no signal processing technique has been able to reliably deliver an undistorted fECG signal from electrodes placed on the maternal abdomen because of the low signal-to-noise ratio (SNR) of the fECG recorded from the maternal body surface. The application of fetal electrocardiography has therefore been almost completely limited to heart-beat analysis and invasive ECG recordings, e.g., by placing an electrode on the fetal scalp during labor. Although this is currently the only way to reliably measure fECG waveform, it can be accomplished only under limited clinical circumstances, presenting a risk to the fetus’ safety.

Fig. 1 illustrates an example of a short segment of fECG recorded both invasively (upper trace) through a fetal scalp electrode, and non-invasively (lower two traces) through electrodes placed on the mother’s abdomen. Four fetal beats (labeled a, b, c and d) are circled on all three traces. Note the abdominal traces contain much smaller fetal beats embedded in significant broadband noise, and much larger amplitude artifacts (transient oscillations) which are due to the mother’s heart¹. Note also that the artifacts manifest both in between and on top of fetal heart beats, with a similar morphology to the fetal heart beats.

In Fig. 2 the amplitude and frequency range of fECG have been compared with other biosignals and artifacts. Accordingly, the fECG is much weaker than the other biosignals. Moreover, from the signal processing perspective, there is no specific domain (time, space, frequency, or feature) in which the fECG can be totally separated from the interfering signals. Fig. 3 illustrates the fact that the main part of the fetal heart beat on the electrocardiogram (the QRS complex) lies in the same frequency domain as the adult QRS complex, as well as broadband muscle noise.

2 Historical Review of Early Work

The fetal electrocardiogram was first observed by M. Cremer in 1906 [13]. The early works in this area were performed by using the galvanometric apparatus of that time, which were limited by the very low amplitude of the fetal signals. As measurement and amplification techniques improved, fetal

¹Here we distinguish continuous *noise* from rapidly transient *artifacts* due to their different origins and the signal processing techniques adopted for their removal.

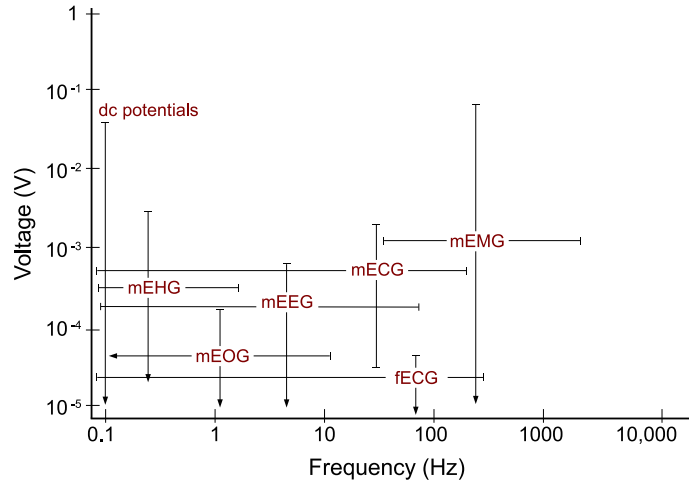


Figure 2: The amplitude and frequency range of different biosignals, some of which interfere with fetal cardiac signals [9, 10, 11]. The labels in this figure stand for the maternal electrocardiogram (mECG), electroencephalogram (mEEG), electrooculogram (mEOG), electromyogram (mEMG), electrohystrogram (mEHG), and the fetal ECG (fECG). Note that the amplitude of these signals also depends on the site from which the data is recorded.

electrocardiography became more feasible and popular [14, 15]. The limiting factor was then the low fetal SNR, especially in presence of the strong maternal cardiac interference; a problem which exists up to now. In the 1960's intra-uterine electrodes (placed between the intact membranes of the fetus and the wall of the uterus) provided SNR improvement for fECG analysis [16]. However, the technique was short lived due to the inherent danger of premature rupture of the membranes induced by the insertion of the electrode. Hon [17] introduced the use of the first *direct* electrode, inserted through the cervix, and fixed to the presenting part of the fetus after rupture of the membranes (typically to the fetal scalp).

Shortly afterwards, with the developments in computer science and signal processing techniques, automatic signal processing and adaptive filtering techniques were used for fetal R-wave detection [18], and maternal cardiac interference cancellation from abdominal electrodes [19, 20]. However, the techniques never provided more than approximate fetal heart rate estimates, and the issue of fECG analysis has since been considered as challenging problem for both the biomedical and signal processing communities.

In order to quantify the volume of past and current research interest in this field, the number of publications in the field of fetal electrocardiography and magnetocardiography, which have been registered in PubMed [21], can be seen in Fig. 4. We can see that after a sharp peak in the 1960's, the trend seems to have been decreasing until the year 2000 (of course in terms of the number of publications). But in the last decade, the interest has again increased, especially for fetal magnetocardiography. This should be partially seen as a result of novel low-noise and low-price measurement and digitizing systems, and partially due to the developments in array signal processing and adaptive filtering techniques. Of course, comparing this with the total number of publications in the field of electrocardiography and magnetocardiography (both for adults and fetuses) in Fig. 5, we notice that fetal cardiography is still in its preliminary stages and there is still a long way to go, for making fetal cardiography a clinically trustable means of fetal cardiac monitoring. It should also be noted that as illustrated in Fig. 6, despite the increase in the number of investigations involving the electrocardiogram or magnetocardiogram (MCG: see section 4.2) in Fig. 5, when normalizing the number of these works by the total number of publications registered in PubMed over the same period, we notice that the percentage of studies in ECG studies has decreased since the 1980's, while MCG research has gained more interest. In section 5, we categorize some of the existing methods in this area from different viewpoints and describe their merits and drawbacks.

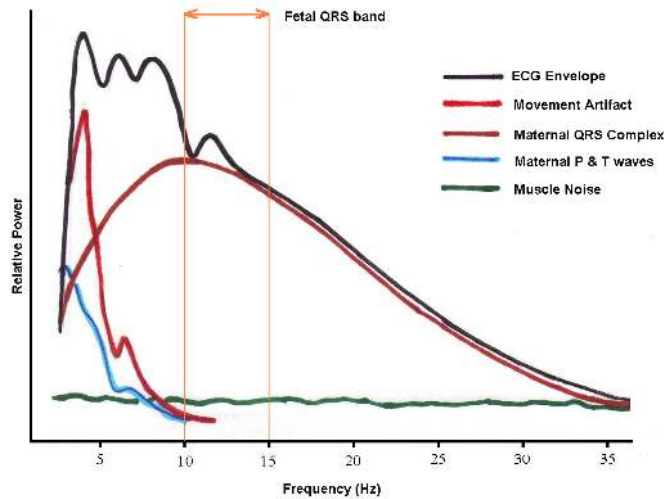


Figure 3: A general representation of the signal, artifacts and noise present in the ECG in the frequency domain. The region in which the fECG QRS complex manifests is also marked. Note that the fECG largely overlaps with the maternal ECG and other interference. The fECG information also overlaps with the undesired signals in time, space, and feature domains as well; therefore, methods that only work in one specific domain are not able to fully separate the fetal cardiac signals. Image adapted from [12].

3 Physiology of the Fetal Heart

3.1 Fetal Heart Development

The heart is among the first organs developed in the fetus and undergoes a considerable amount of growth in the very early stages of pregnancy [22] (Fig. 7). The most critical period of this development is between 3 and 7 weeks after fertilization, when a simple heart tube assumes the shape of a four-chambered heart (Fig. 8).

The heart is believed to begin beating by the 3rd week of life and pumps its own blood through a separate closed circulatory system with its own blood type. Shortly after, the eye, ear and respiratory systems begin to form. The fetal heart can then be externally monitored by ultrasound imaging in the 7th to 9th week [22]; although only vague images are recordable at this step. The cardiac waveforms and beat-to-beat variability of the heart rate are not measurable in ultrasound imaging. At 20 weeks, the fetal heart beat can be heard without amplification, with a rate of around 120-160 beats per minute, but

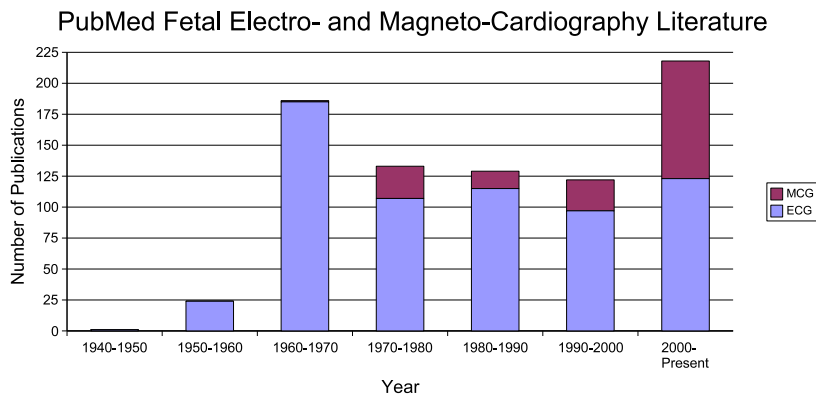


Figure 4: Number of publications in the field of *fetal* electrocardiography and magnetocardiography, registered in PubMed [21].

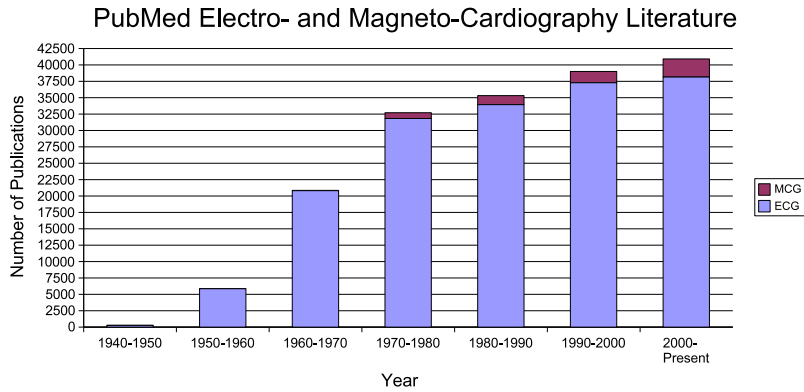


Figure 5: Number of publications in the field of electrocardiography and magnetocardiography, registered in PubMed [21].

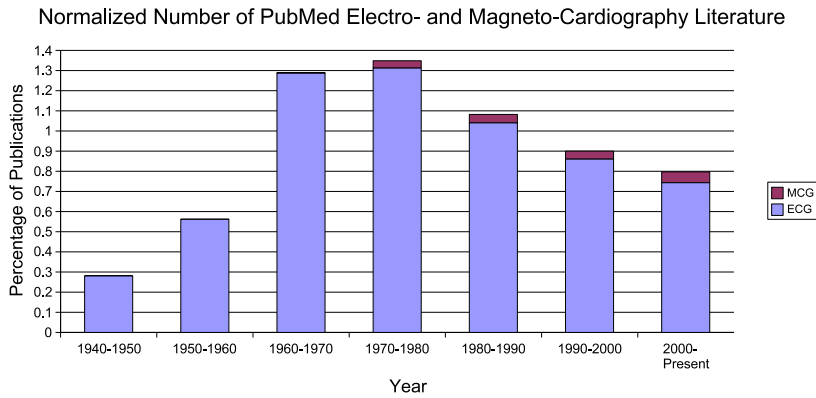


Figure 6: The percentage of publications in the field of electrocardiography and magnetocardiography normalized by the number of publications in all subjects, registered in PubMed [21].

little extra diagnostic information can be ascertained from auscultation above heart rate.

Therefore, the fECG and MCG that contain morphological information of the cardiac activity have received much interest. These signals can be recorded from the maternal abdomen as early as the eighteenth to twentieth week after conception [8, 23].

At 6 weeks post fertilization, brain waves can be recorded, the skeleton is complete and most reflexes are present. However, the embryo is only about 0.5cm in length and the head, mouth, liver, and intestines are just beginning to take shape. At 12-14 weeks (when the fetus weighs around 30g and is about 7cm long), the muscles begin to develop and spontaneous movements can be observed which intensify with age.

Rather late into the pregnancy, at around 26 weeks, the fetus begins to inhale and exhale. Of course, the fetus is not breathing air and oxygenating the blood through this action. This is thought to aid with the production of surfactant and exercise the respiratory system before birth. Although the fetus is capable of living outside the womb at 23-24 weeks, this would be considered premature at birth, and the normal gestation time is approximately 40 weeks [25]. In fact, at 23 weeks there is only a 15% chance of viability outside of womb with the viability probability rising to 56% at 24 weeks and 79% at 25 weeks.

3.2 Fetomaternal Compartments

A simplified anatomy of the fetomaternal compartments can be seen in Fig. 9. Accordingly, the fetus is surrounded by several different anatomical layers with different electrical conductivities [26, 27]. The

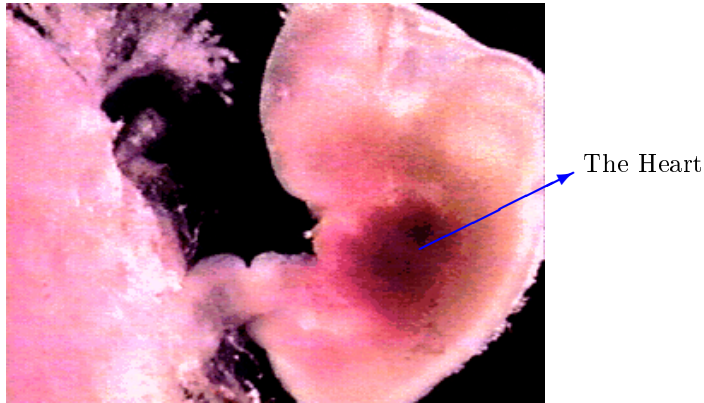


Figure 7: The fetus and its heart in the early stages of development; adapted with permission from [24].

highest and lowest conductivity are found in the amniotic fluid and the *vernix caseosa*, respectively. Both of these layers surround the fetus completely.

In the maternal abdomen compartments, the skin and the subcutaneous fat also have a poor conductivity – about ten times smaller than the muscle tissue [27, 28]. Therefore these two layers, which are the interface of the surface electrodes and the internal tissues, have considerable influence on the recorded fECG. All of these different tissues and layers form a so called, *volume conductor*, in which the fetal cardiac signals propagates up-to the maternal body surface. This volume conductor is not a steady conductor and its electric conductivity and geometric shape constantly change throughout gestation. Specifically, in the second half of gestation (20th week onward), in which the ECG and MCG are recordable from external electrodes, it is known that the amniotic fluid [29, 30], the placenta, and the fetus itself [31] are all increasing in volume. The very low conductivity *vernix caseosa* layer is formed between the 28th and 32nd weeks of gestation [26, 27]. It almost electrically shields the fetus and makes the recording of fetal surface ECG very difficult. However, for normal pregnancies (non-premature deliveries), the layer slowly dissolves in the 37th to 38th weeks of pregnancy [28]. In previous studies, different interpretations have been presented for the fECG signals recorded during the third trimester of gestation (after the forming of the *vernix caseosa*), based on preferred current pathways such as the umbilical cord, the oronasal cavity, or even random holes in the *vernix caseosa* [26, 27]. The preferred current pathway hypothesis, besides the intrinsic weakness of the fECG and its gradual development, also explains some of the differences between adult and fECG and vectorcardiogram shapes.

3.3 Fetal Presentations

During the first two trimesters of pregnancy the fetus does not have a specific presentation and moves about a lot. By the middle of the third trimester the fetus commonly settles in a head-down position known as the *vertex* presentation, which is more appropriate for birth [32]. However, as shown in Figs. 10 and 11 the fetus may also settle in other less probable presentations. The presentation of the fetus influences the fetal cardiac signals recorded from the maternal body surface over different leads [33].

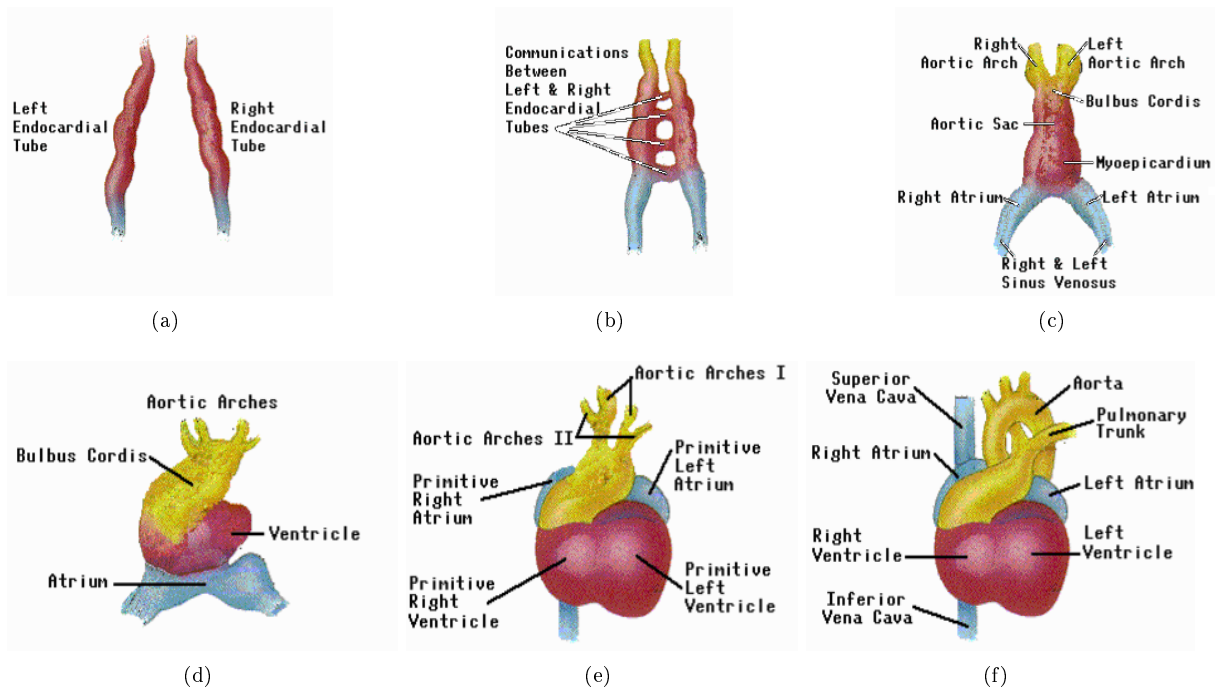


Figure 8: Development stages of the fetal heart during gestation in chronological order (from a to f); adapted with permission from [24].

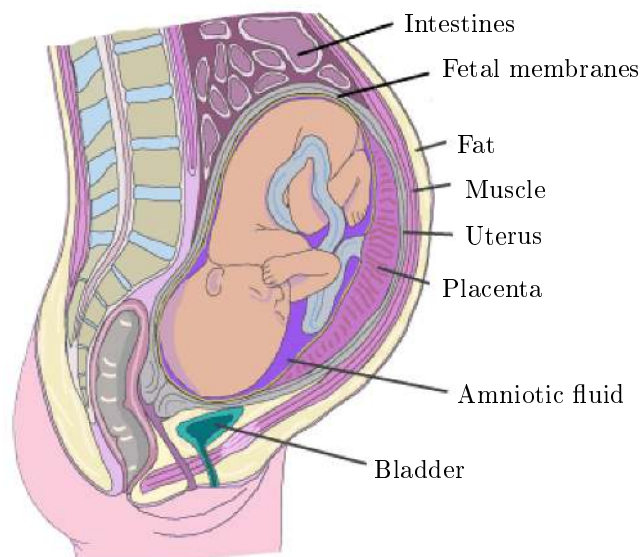


Figure 9: The major fetomaternal compartments that influence the fetal cardiac surface potentials; adapted with permission from [28]. The *vernix caseosa* is formed over the fetal skin.

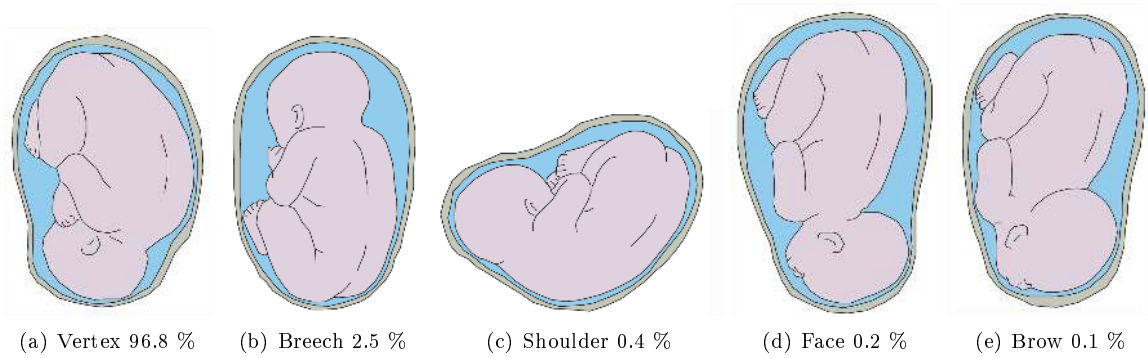


Figure 10: Different fetal presentations and the percentage of incidence at the end of gestation; adapted with permission from [28].

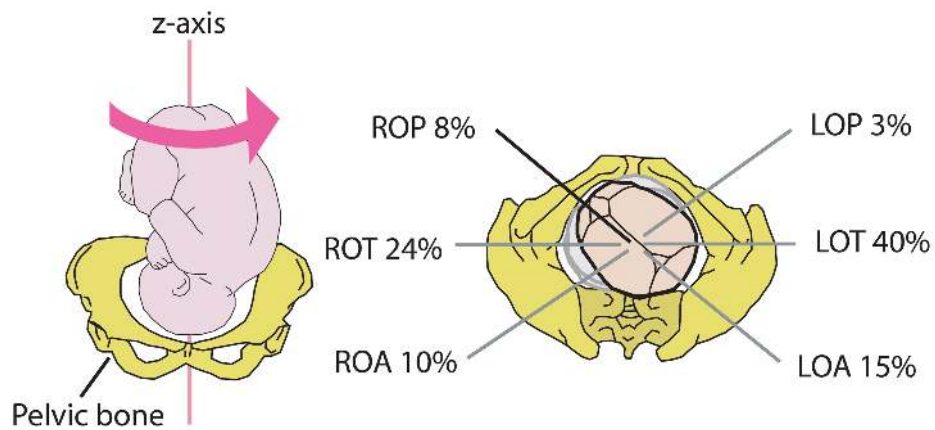


Figure 11: Different fetal vertex positions and their incidence at the end of gestation; adapted with permission from [28]. In the right side abbreviations, L stands for left, R for right, O for occiput, A for anterior, T for transverse and P for posterior. The LOA position is seen in the left graph.

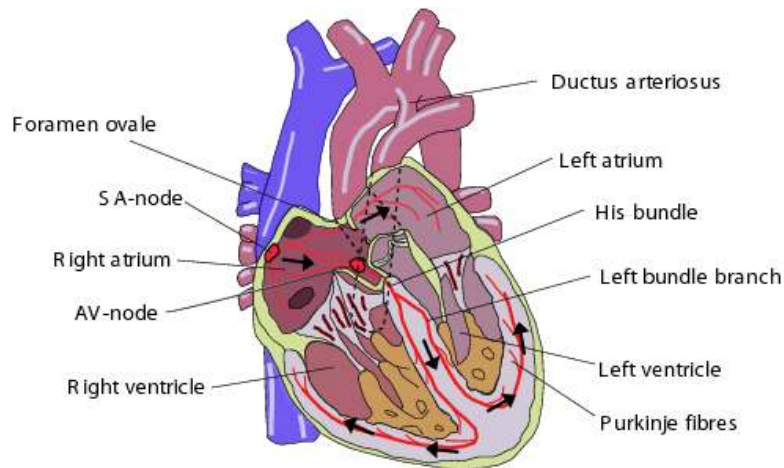


Figure 12: The anatomy of the fetal heart; adapted with permission from [28].

3.4 Anatomy of the Fetal Heart

The anatomy of a fully developed fetal heart is depicted in Fig. 12. There are some functional differences between the fetal and adult hearts. It is known that after birth, the left ventricle pumps blood to the body and the right ventricle pumps the blood to the lungs for acquiring oxygen. However, for the fetus the fetal oxygen is supplied by the *placenta*; therefore the blood is no longer pumped to the lungs for this purpose. Instead both ventricles pump the blood throughout the body (including the lungs) [28]. For this purpose there are two shunts, namely the the *foramen ovale* and the *ductus arteriosus* that link the outgoing vessels of both ventricles. This allows blood to enter the right atrium and to bypass the pulmonary circulation. A similar adaptation in the fetus is the *ductus venosus*, which is a vessel that allows blood to bypass the liver. It carries blood with oxygen and nutrients from the umbilical cord straight to the right side of the fetal heart [34].

After birth, the *foramen ovale* closes with the first breaths and the *ductus arteriosus* partially closes in 10 to 15 hours after birth and takes up-to three weeks for complete closure. The *ductus venosus* also closes shortly after birth, when the umbilical cord is cut and blood flow between the mother and fetus stops [34]. There are also other minor changes in the physiology of the baby's heart and its circulatory system that take place within the first year after birth.

3.5 Electrical Activity of the Fetal Heart

While the mechanical function of the fetal heart differs from an adult heart, its beat-to-beat electrical activity is rather similar. The wave-like pumping action of the heart is controlled by a network of neural fibers that are distributed throughout the *myocardium* and coordinate its regular contraction and relaxation [35]. The myocardial stimulation starts from the *sinoatrial node* (SA-node), which serves as the natural pacemaker for the heart. The SA-node is a cluster of cells located in the upper-right posterior wall of the right atrium, which sends the electrical impulse that triggers each heartbeat. This impulse further stimulates the second cluster of cells, namely the *atrioventricular node* (AV-node) that is situated in the lower posterior wall of the right atrium. After the AV-node, the depolarization front enters the bundle of His, the left and right bundles, and ends in the Purkinje fibers, depolarizing the ventricular muscles in its way.

The procedure of myocardium contraction is known as the *depolarization* (or *systole*) cycle that is followed by the *repolarization* (or *diastole*) cycle, in which the myocardium relaxes and becomes ready for the next activation. A complete cardiac cycle is depicted in Fig. 13.

3.6 The Electrocardiogram Morphology

The ECG measured on the body surface is a result of the stage-wise activation of the myocardium and results in the so-called PQRST-complex depicted in Fig. 13. This letter representation was first coined by

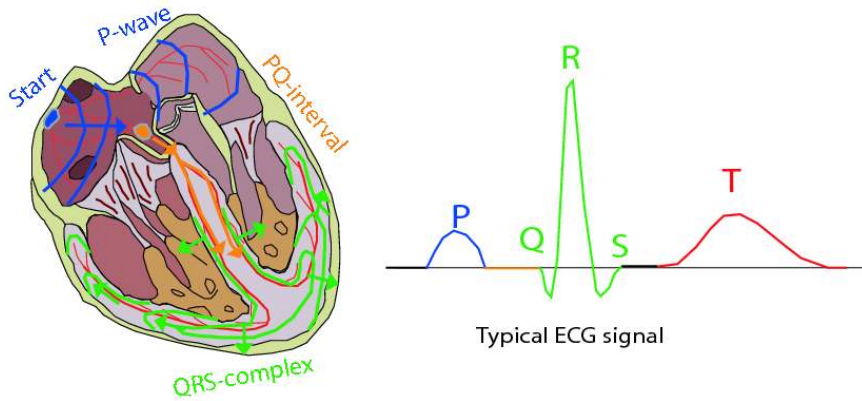


Figure 13: The activation cycle of the fetal heart; adapted with permission from [28].

Einthoven in 1895 [36, 37]. In this notation, the P-wave accounts for the spreading of the depolarization front through the atria. During the next 50ms, only very weak signals are recordable, as it takes some time for the depolarization front to travel through the AV-node and since only a small number of myocardial cells take part in the atrioventricular conduction the signals are very small² [38]. Next, the ventricles are depolarized resulting in the QRS-complex. At the same time the atria are repolarized; however this repolarization is obscured by the depolarization of the ventricles. Finally we have the T-wave, which corresponds to the repolarization of the ventricles. In some measurements the T-wave is followed by a small wave known as the U-wave, which for normal ECG, is believed to be due to repolarization of the His-Purkinje system [37]. Other hypotheses for the origin of the U-wave have been suggested in [39]. The segment between the end of the U-wave up-to the beginning of the next P-wave is known as the *isoelectric segment* of the ECG, in which the myocardium does not have a measurable activity.

Morphologically, adults and fetuses have rather similar ECG patterns; but the relative amplitudes of the fetal complexes undergo considerable changes throughout gestation and even after birth. The most considerable change concerns the T-waves, which are rather weak for fetuses and newborns [23].

3.7 Fetal Heart Rate and Heart Rate Variability

The changes in fetal heart rate (FHR) and fetal heart rate variability (FHRV) are not well understood, particularly since the fetal central nervous system may not be fully formed at birth. Although there is no direct neural link to the fetus from the mother, it is thought that maternal activity can affect the fetal heart rate and blood pressure indirectly through the action of transmitted hormones (cortisol/catecholamines) and possibly directly through compromised placental vasculature or blood volume [40, 41, 42]. Moreover, the maternal and fetal HR can become entrained, but the mechanism of entrainment is not clear [40]. In general though, the mother and fetus(es) have separate autonomic nervous systems which are indirectly linked (mostly with the mother affecting the fetus) by changes in blood pressure and hormones.

At 20 weeks, the FHR has a baseline value of around 120 to 160 beats per minute (BPM). However, although the variations of the fetal heart rate are different to children and adults, the FHR is known to possess circadian variations which evolve over the course of the pregnancy [43]. Structurally, the *heart-rate variability* (HRV) of the fetus is also known to be simpler (less dynamic) than an adult. However, as the fetal autonomic nervous system evolves, the HRV patterns also become more and more complex [44, 45]. A typical example of this complexity is depicted in Fig. 14.

Recently Muro *et al.* [46] made FHR recordings at 21, 24, 27, 30, 33, and 36 weeks from a normal pregnant woman and found significant diurnal variations in all the recorded gestational ages. Furthermore, they found the amplitude of diurnal variation increased with advancing gestation. The FHR baseline recorded at night (midnight–9:00 hours) significantly decreased from 24 to 30 weeks, while the afternoon/evening FHR baseline (15:00–21:00 hours) decreased after 27 weeks. These findings suggest that the changes in the diurnal variations of FHR baseline with advancing gestation reflect the process of development of the fetal nervous system.

²Note that although frequently addressed as being *isoelectric*, the PQ segment is not isoelectric [38].

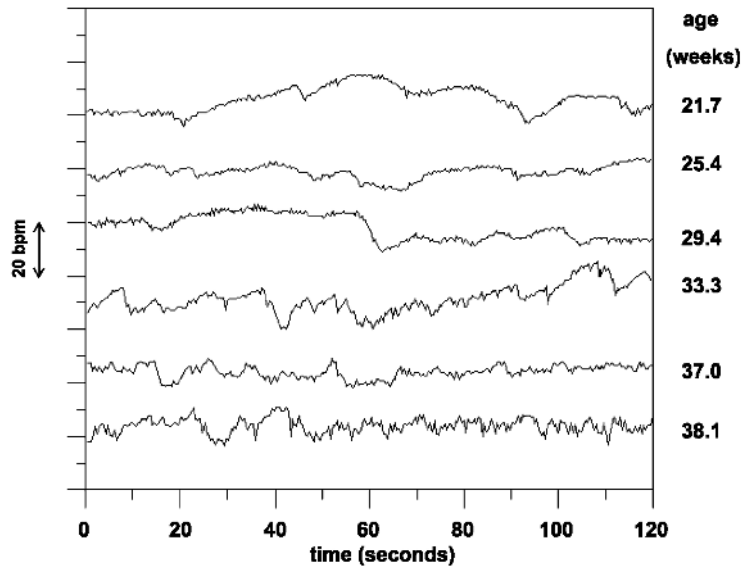


Figure 14: The increasing complexity in fetal HRV time-series in different gestational ages; adapted with permission from [45].

Lunshof *et al.* [47] showed that a significant diurnal rhythm in basal FHR was present in 73% of their fetal study population, and this rhythm was closely related to the maternal heart rate rhythm. They also found that diurnal rhythms in FHRV, accelerations, and activity were present in only 30% to 50% of the fetuses. Lange *et al.* found that FHRV changed with gestational age and mean HR, or activity levels, but not on gender or time of day.

It is also known that number of heart rate accelerations and decelerations per hour that a fetus experiences may also be related to its health, and is a function of gestational age. The rate and duration of episodes of sustained fetal tachycardia (SFT)³, increases with gestational age [48]. Shono *et al.* [48] analyzed 24 h FHR in 102 normal pregnant women (at 30-41 weeks) to determine the gestational age related changes in SFT. For 38-39 weeks, nocturnal SFTs (19:00–07:00 hours) were significantly more frequent than during day-time (07:00–19:00 hours). At 30-31 weeks of gestation, there were no significant episodes, but in the 40th week, the rate and average duration increased to 85% and 114 min.

3.8 The Diagnostic Fetal ECG

Currently fECG analysis is used in the clinical domain almost entirely to analyze heart rate and the associated variability. Morphological analysis of the fECG is generally not undertaken for cardiac-anomaly populations for the following reasons:

- Although structural heart defects are the most common structural fetal defect, they are rare (present in less than 1% of the population).
- Structural defects are evaluated using echocardiography, because the problem is structural, not conductive.
- There is no evidence that structural defects have abnormal conduction (although this has never been studied in-utero) or that it would be useful in clinical predictive medicine.
- By far the most common arrhythmia is premature atrial contractions, which are usually benign.
- Pathologic fetal heart block arrhythmias are extremely rare, and usually occur in patients with systemic lupus erythematosus (SLE).

³An increase in FHR from 160 BPM or more and persisting for more than 1.5 to 2 hours is considered to be SFT.

One notable exception is the recent arrival of commercial monitoring systems that provide proxy ST-segment analyses using the waveform from the fetal scalp electrode (e.g. the STAN monitor from Neoventa Medical, Goteborg, Sweden). Beginning in the late 1990s, European investigators began using the STAN monitor in routine clinical practice. This system is based on an analysis of the quantitative ratio between the amplitude of the fetal T-wave and the fetal R-wave and on the presence or absence of a biphasic ST segment. The ratio is used clinically either to provide reassurance or raise concern in the event of a non-ominous but non-reassuring fetal heart tracing. The physiologic basis for this test is the observation that repolarization of the adult myocardium is extremely sensitive to hypoxia, resulting in elevation of the ST-segment in adults with coronary artery disease. Similar findings have been demonstrated in fetal sheep, with experimental hypoxia leading to elevation in the ST-segment and T-waves in the fetal ECG [49]. The change in this ratio is thought to represent altered cellular ionic currents during anaerobic cardiac metabolism [50, 51].

This metric that compares the voltage amplitude of two components of the ECG waveform (the T-wave and the R-wave) can be accomplished reliably even in the absence of a standard ECG vector. This characteristic is critical because the fetal position is uncertain and subject to change, and thus vector-based analyses are inherently problematic in a fetal population. A series of clinical trials were begun that compared use of the STAN algorithm in addition to standard fetal monitoring with fetal monitoring alone. Early results demonstrated that use of STAN helped to identify cases of intra-partum acidosis [52, 53, 54, 55, 56].

One of the inherent limitations of this approach to fetal cardiac monitoring, however, is that it requires placement of a fetal scalp electrode, which is possible only during labor. Moreover, only one dimension of the electrical activity of the heart can be imaged using this type of electrode. This means that the sensitivity of such a technique is particularly limited by noise and is confined to problems that affect the entire heart. Activity that affects other portions of the heart, or is only a subtle effect, will be missed by such electrodes. Another issue that affects the scalp electrode includes movement of the fetus, which will appear as axis movements. If several ECG leads were available, such problems could potentially be addressed, providing more specific analysis, earlier in pregnancy.

4 Data Collection

An essential component to evaluating any fECG analysis algorithm is a representative and high quality database. Fetal ECG data collection can either be *invasive* or *noninvasive*. In invasive methods, the recording electrodes have direct contact with the fetal skin, which may only be achieved by using an *intra-uterine* electrode during labor [57, 58, 59]. The signals recorded by invasive methods have better quality as compared with noninvasive methods; but the procedure is rather inconvenient and is limited to recordings during labor. On the other hand, noninvasive methods use the signals recorded from the maternal abdomen, which can be done in any stage of pregnancy using dozens of electrodes. However, the low fECG SNR and the other interferences are the limiting factors of this method. Nevertheless, due to the numerous advantages of the noninvasive method, a large body of research has been conducted towards the development of signal processing techniques for retrieving the fECG from noninvasive recordings.

4.1 Modern Data Collection Techniques and Open Databases

When assembling (or using) a fECG database it is essential to consider the number of electrodes, type of electrode, heterogeneity of the patient population, conditions and gestational ages, as well as the data quality (in terms of presence of noise, sampling frequency, and amplitude resolution). In terms of recording quality, for morphological analysis, one would expect that doubling or trebling adult requirements would be a suitable approach, leading to sampling frequencies of around 2 kHz and resolution of 16 bits. No current standards exist for electrode location, but concentric circles on the abdomen, covering all available angles will provide the maximal coverage.

Currently there are two public databases widely used by the signal processing community. The first, known as the *Daisy* dataset [60], consists of a single dataset of cutaneous potential recording of a pregnant woman. A total of 8 channels (4 abdominal and 3 thoracic) are available, sampled at 250 Hz and lasting 10 seconds. This dataset is part of a database know as the SISTA (Signals, Identification, System Theory and Automation) database from the SISTA group of the department of Electrical Engineering of the

Katholieke Universiteit Leuven, Belgium

The second database, known as the *Non-Invasive Fetal Electrocardiogram Database*, is a series of 55 multichannel abdominal fECG recordings taken from a single subject over a period of 20 weeks. This database was recently contributed to PhysioBank [61]⁴. The recordings are in the EDF+ format, and include two thoracic (maternal ECG) signals and three or four abdominal (maternal+fetal ECG) signals. The signals were recorded at 1kHz, 16bit resolution with a bandpass filter (0.01Hz-100Hz) and a main notch filter (50Hz). The recordings contain 2 thoracic signals and 3 or 4 abdominal signals. The data has been prepared for PhysioNet by the Digital Signal Processing Group (GPDS) of the Electronics Engineering Department, ETSE Escuela Técnica Superior de Ingeniería, University of València, Spain.

However, no existing public database contains any associated clinical information or data from more than one subject. Moreover, there is no gold standard measurement in any of these databases (from the scalp electrode).

4.2 Alternative Measurement Techniques

In previous works, besides electrocardiography, the well-being of the fetal heart has also been monitored by other techniques [8], including:

- Echocardiography [62, 63]; also known as sonography of the heart which is based on standard ultrasound techniques.
- Phonocardiography [5, 64, 65]; which is a graphic registration of the heart sounds and murmurs produced by the contracting heart (including its valves and associated great vessels), picked up as vibrations and transformed by a piezoelectric crystal microphone into a varying electrical output according to the pressure imposed by the sound waves [66, 67].
- Pulse Oximetry [68]; is used to measure oxygen saturation of fetal blood as an adjunct to electronic fetal heart monitoring. The amount of reflected infra-red light is used to determine the relative amount of oxygen in the blood under the fetus' skin. To do this, a custom catheter is passed through the dilated cervix, after the rupture of the membranes, to lodge against the cheek where the probe is sited. Fetal pulse oximetry is a relatively new fetal assessment technology. After consideration of the results of a multicenter randomized, controlled, clinical trial on fetal pulse oximetry in the United States, the U.S. Food and Drug Administration approved the technology for clinical use on May 12, 2000. However, recent studies indicate that knowledge of the fetal oxygen saturation is not associated with a reduction in the rate of cesarean delivery or with improvement in the condition of the newborn [68], and the product is used only for research purposes.
- Cardiotocography [69]; which is the simultaneous measurement of the fetal heart rate with an ultrasound transducer, and the uterine contractions with a pressure-sensitive transducer (called a tocodynamometer), for measuring the strength and frequency of uterine contractions [70].
- Magnetocardiography [71, 28, 72, 73, 74]; which is a technique to measure the magnetic fields of cardiac signals using extremely sensitive devices such as the Superconducting Quantum Interference Device (SQUID) [75].

Among these methods, echocardiography is perhaps the most commercially the most available means of fetal cardiac monitoring. However, the ECG and the MCG contain more information, since most cardiac abnormalities have some manifestation on the ECG or MCG morphology or RR-interval timing [8]. Note that due to the morphologic similarity of the MCG and ECG, MCG processing methods are similar to the ECG-based ones; although using the current SQUID technology for magnetic recordings, the SNR of the fetal MCG is usually higher than its ECG. However, ECG recording apparatus are simpler and currently more affordable as compared with MCG systems.

5 Data Analysis

We can categorize the existing fetal data analysis literature by their methodologies. The existing methods in this area include:

⁴<http://www.physionet.org/physiobank/database/nifecgdb/>

5.1 Direct Fetal ECG Analysis

In early works, fECG detection was done over raw data without any processing. For instance in [76], some special cases were reported in which due to the *vertex* presentation of the fetus, the fetal R-peaks appeared as positive peaks while the maternal peaks had negative peaks. In such cases, the detection of the fetal RR-intervals is rather simple and may be achieved by simple peak detection, even without the removal of the maternal ECG. However, these methods are not always applicable and highly depend on the fetal presentation and gestational age.

5.2 Adaptive Filtering

Different variants of adaptive filters have been used for maternal ECG cancellation and fECG extraction. These methods consist of training an adaptive or matched filter for either removing the maternal ECG using one or several maternal reference channels [19, 57], or directly training the filter for extracting the fetal QRS waves [18, 77]. *Ad hoc*, adaptive filters such as ‘partition-based weighted sum filters’ [78], and least square error fittings [79], have also been used for this purpose.

Note that the existing adaptive filtering methods for maternal ECG artifact removal, either require a reference maternal ECG channel that is morphologically similar to the contaminating waveform, or require several linearly independent channels to roughly reconstruct any morphologic shape from the three references [19]. Both of these approaches are practically inconvenient and with limiting performance, since the morphology of the maternal ECG contaminants highly depends on the electrode locations and it is not always possible to reconstruct the complete maternal ECG morphology from a linear combination of the reference electrodes⁵. Therefore, a maternal ECG cancellation method that would not require any excess reference electrodes or at most a single reference without the morphologic similarity constraint is of great interest.

The Kalman Filtering framework, developed in [81, 82, 80], which can be considered as members of the general class of adaptive filters, are promising approaches that use only an arbitrary maternal ECG reference for maternal ECG cancellation and fECG enhancement. This framework can be extended to more advanced filter types such as the Particle Filter in future research.

5.3 Linear Decomposition

Decomposition of single or multi-channel recordings is another common approach. In this method, the signals are decomposed into different components by using suitable basis functions. The basis functions can be selected from classes that are somehow in coherence with the time, frequency, or scale characteristics of the fetal components. Wavelet decomposition [83, 84], and matching pursuits [85], are among these methods.

Spatial filtering techniques such as singular value decomposition (SVD) [86, 20, 87, 88, 89], blind and semi-blind source separation [90], can be considered as *data-driven* decomposition methods, which construct the required basis functions from the data itself, by maximizing some statistical measure of signal separation. In [91, 92], it has been shown that for fECG extraction blind source separation methods outperform adaptive filters such as the one proposed in [19]. One of the advantages of spatial filtering over conventional adaptive filters is that they can also separate the maternal and fetal complexes with temporal overlap.

Different variants of blind and semi-blind source separation methods have been used for fECG extraction [93, 94]. These methods are commonly based on the assumption of independent components (or more generally independent subspaces) for the maternal and fetal signals, or the existence of some temporal structure for the desired signals [95, 96, 97]. Blind source separation methods have also been combined with wavelet decomposition for extracting and denoising the fECG signals [98, 99]. One of the key problems in blind source separation approaches is that there is an implicit assumption that the signals and noises are mixed in a linear and stationary manner. Since both the fetal and maternal signals move (as they breathe, and shift positions), the stationary mixing is often not a good approximation.

Decomposition methods are currently the most common and effective way of fECG extraction and denoising. However, the existing methods are rather generic and have not been fully customized to the periodic structures of ECG. Therefore, a challenging issue is to design multichannel signal processing

⁵See [80] for the limitations of the single dipole model of the heart.

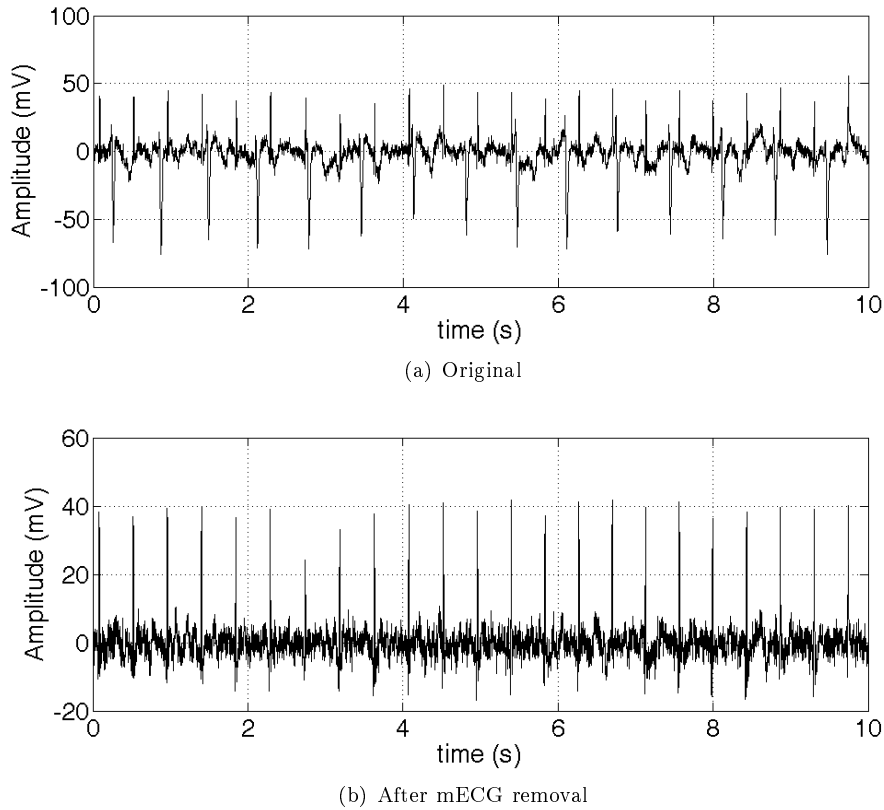


Figure 15: Upper plot: Mixture of maternal and fetal ECG. Maternal beats are negative spikes (HR = 90 BPM). Fetal beats are the smaller, positive spikes (HR = 138 BPM). Lower plot: Extracted fECG (before denoising). Note that number of beats and relative positions are preserved and so fetal HR estimation and HRV is viable.

methods (linear or nonlinear) that are specific to ECG/MCG signals. One recently described approach [100, 80, 101] involving adaptive blind source decomposition techniques, combined with model-based signal processing has shown promising results. Figs. 15 and 16 illustrate typical results of these new approaches. Note in particular that the clinical features are preserved in these examples. Another notable feature of the extracted fetal ECG is that the respiratory influence on the QRS complex is preserved. This opens up the possibility that fetal respiration activity could be routinely monitored and investigations be performed to associate particular respiratory patterns with subsequent neonatal problems such as sudden infant death syndrome or neonatal apnea.

5.4 Nonlinear Decomposition

Linear decomposition methods using either fixed basis functions (e.g. wavelets), or data-driven basis functions (e.g. singular vectors) have limited performance for nonlinear or degenerate mixtures of signal and noise. In fact, fetal signals and other interferences and noises are not always ‘linearly separable’ [80]. One solution for such cases is to use nonlinear transforms for separating the signal and noise parts of the observations. Of course, nonlinear transforms are rather *ad hoc* and require some prior information about the desired and undesired parts of the signal. In [102, 103, 104, 105], using nonlinear projections, a series of maternal ECG cancellation and fECG enhancement methods have been developed. These methods consist of using the noisy signal and its delayed versions for constructing a state-space representation of the signal, smoothing the state-space trajectory using conventional or PCA smoothers [106], and transferring the samples back to the time-domain representation. These methods are very attractive from the point that they are applicable to as few as one single maternal abdominal channel. However, the selection of the required time-lags is empirical and the important inter-beat variations of the cardiac signals can be wiped-out during the state-space smoothing. Moreover, they have higher computational complexity as

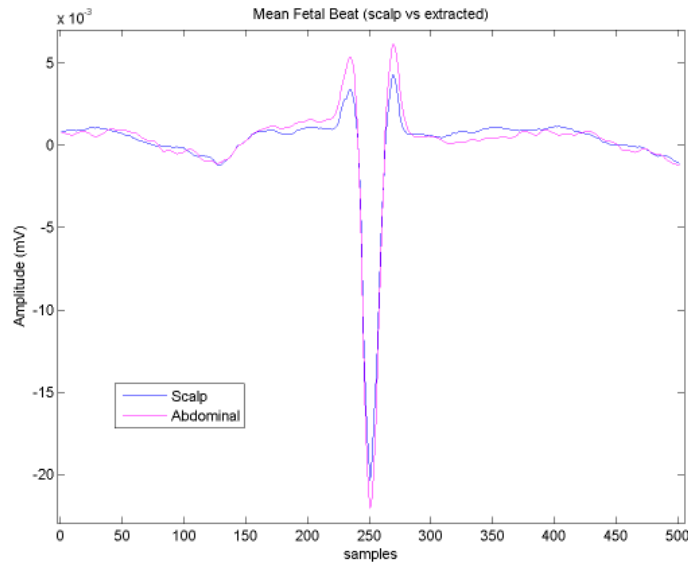


Figure 16: Average fetal heart beat morphology taken from scalp electrode (blue line) and average fetal heart beat extracted from abdominal maternal/fetal mixture (magenta line). Note the preservation of clinical features (R-peak, QT-interval, ST-segment).

compared with linear methods, and the correct embedding dimension can change as the noise statistics change.

Another recently developed technique is a deflation method of subspace decomposition, which uses a combination of linear projection (and back-projections) with linear/nonlinear denoising schemes [101]. This method is very promising and has found various applications including the extraction of the fECG from low SNR channels with few number of electrodes [101].

In Table 1, a general comparison is made between the existing methods of fECG analysis. Accordingly, each method has its own benefits and limitations and is applicable for specific scenarios.

5.5 Forward Modeling vs. Inverse Solutions

An important aspect of noninvasive cardiac signal studies (either for adults or fetuses) is to find relationships between the cardiac potentials generated at the heart level and the potentials recorded on the body surface. This problem is known as the *forward problem* of electrocardiography, for which electromagnetic principles are used with electrophysiological models of cardiac potentials and volume conduction models, to predict the potentials that can appear on the body surface. Forward modeling also provides valuable insight for the more practical problem of estimating the cardiac potentials from body surface recordings, namely the *inverse solution*. Forward and inverse problems have long been studied for adult cardiac signals [107, 108]; but there are only few works of this sort for fetal cardiac signals.

Some pioneer studies on fetomaternal compartment conductivities and fECG modeling were presented in [26, 27, 109, 110], where the fECG and the volume conductor medium from the fetal heart up-to the maternal abdominal leads were modeled and simulated. They have also questioned some previous results on the conductivity of the maternal internal body tissues and note that the fECG –as seen from the maternal abdomen– does not have the same dimensionality throughout pregnancy. This may partially be due to the physiological changes of the fetal heart itself, and partially due to the low conductivity of the *vernix caseosa* that surrounds the fetus and electrically shields it from the outside world in certain gestational ages. Some of these findings have also been verified with experimental results.

In a more recent study, the problem of reliability of the fetal MCG and ECG has been studied using forward modeling in normal and pathologic cases [28]. They use different models for different stages of gestation. Specifically, in the forward modeling of the last trimester of gestation, they considered a layer of *vernix caseosa* containing two holes and achieved fECG maps that resembled the actual measured

maps. The holes in the *vernix caseosa* were considered over the mouth of the fetus and the onset of the umbilical cord, corresponding to the preferred current pathways. Other issues concerning the low-amplitude of the fetal T-waves are also presented in this work. However, for the processing of their real data, they used simple methods such as average waveform subtraction of the maternal MCG.

6 Modeling the Fetal ECG

6.1 The Fetal Heart Source

The myocardium, during its contraction, may electrically be considered as a surface of potentials. The resultant electrical activity of the heart has been modeled with various methods ranging from *single dipole models* to *activation maps* [111]. Among these methods, the simplest and yet the most popular is the single dipole model that is believed to explain 80%–90% of the representation power of the body surface potentials [112], and the ECG and VCG are based on it. According to the single dipole model, the cardiac electrical activity may be represented by a time-varying rotating vector, the origin of which is assumed to be at the center of the heart and its end sweeps a quasi-periodic region in the space.

This vector may be mathematically represented in the Cartesian coordinates, as follows:

$$\mathbf{d}(t) = x(t)\hat{\mathbf{a}}_x + y(t)\hat{\mathbf{a}}_y + z(t)\hat{\mathbf{a}}_z, \quad (1)$$

where $\hat{\mathbf{a}}_x$, $\hat{\mathbf{a}}_y$, and $\hat{\mathbf{a}}_z$ are the unit vectors of the standard three vectorcardiogram body axes

With this definition, and by assuming the body *volume conductor* as a passive resistive medium which only attenuates the source field [107], any ECG signal recorded from the body surface would be a linear projection of the dipole vector $\mathbf{d}(t)$, onto the direction of the recording electrode axes $\mathbf{v} = a\hat{\mathbf{a}}_x + b\hat{\mathbf{a}}_y + c\hat{\mathbf{a}}_z$:

$$ECG(t) = \langle \mathbf{d}(t), \mathbf{v} \rangle = a \cdot x(t) + b \cdot y(t) + c \cdot z(t) \quad (2)$$

In its most simplified form we can consider the dipole source of $\mathbf{d}(t)$ inside a homogeneous infinite volume conductor. The potential generated by this dipole at a distance of $|\mathbf{r}|$ is:

$$\phi(t) - \phi_0 = \frac{\mathbf{d}(t) \cdot \mathbf{r}}{4\pi\sigma|\mathbf{r}|^3} = \frac{1}{4\pi\sigma} \left[x(t) \frac{r_x}{|\mathbf{r}|^3} + y(t) \frac{r_y}{|\mathbf{r}|^3} + z(t) \frac{r_z}{|\mathbf{r}|^3} \right] \quad (3)$$

where ϕ_0 is the reference potential, $\mathbf{r} = r_x\hat{\mathbf{a}}_x + r_y\hat{\mathbf{a}}_y + r_z\hat{\mathbf{a}}_z$ is the vector which connects the center of the dipole to the observation point, and σ is the conductivity of the volume conductor [107, 113].

The ECG signals recorded from the body surface are the potential differences between two different points. Equation (3) therefore indicates how the coefficients a , b , and c in (2) can be related to the radial distance of the electrodes and the volume conductor material. (In reality the volume conductor is neither homogeneous nor infinite, leading to a much more complex relationship between the dipole source and the body surface potentials.)

A 3-dimensional orthogonal vector representation of the ECG, (the VCG), is also possible by using three of the above models. Basically any set of three linearly independent ECG electrode leads can be used to construct the VCG. However, in order to achieve an orthonormal representation that best resembles the dipole vector $\mathbf{d}(t)$, a set of three orthogonal leads that correspond with the three body axes are selected. The normality of the representation is further achieved by attenuating the different leads with *a priori* knowledge of the body volume conductor, to compensate for the non-homogeneity of the body thorax [113]. The *Frank lead system* [114], or the *corrected Frank lead system* [115] which has better orthogonality and normalization, are conventional methods for recording the VCG.

More generally, the cardiac signals may be represented by a multi-pole with N degrees of freedom. In [26] it has been discussed that the electrical activity of the fetal cardium is rather similar to an adult heart (especially in the second half of gestation), however due to the considerable distance between the recording electrodes and the fetal heart(s), and also due to the very low conductivity layers such as the *vernix caseosa* that (almost) electrically insulate the fetus from the outside world, the fetal electrical activity may be effectively modeled with a single dipole.

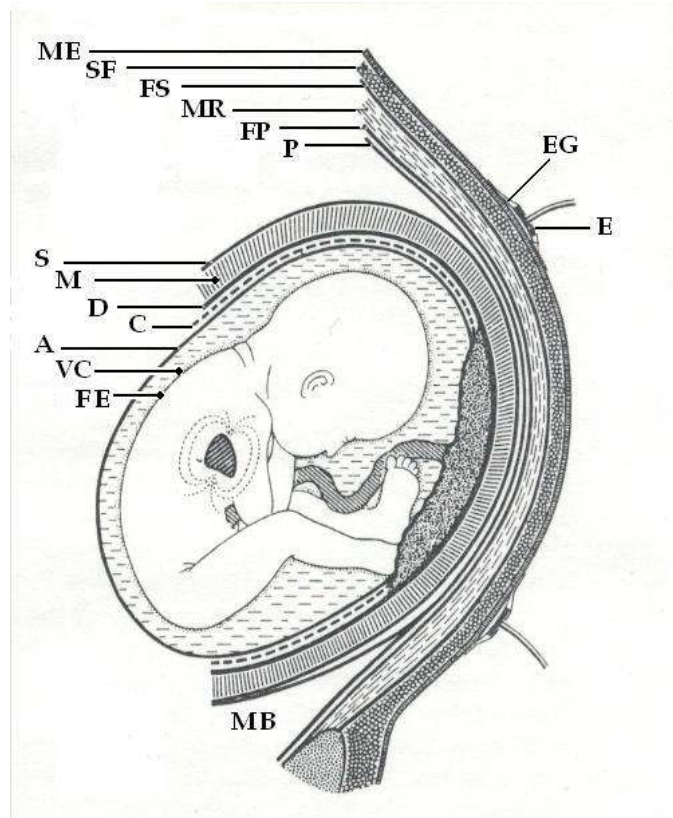


Figure 17: Schematic representation of the media through which the current generating the fECG is conducted to the surface of the maternal abdomen at approximately 30 weeks. ME: Maternal Epidermis; SF: Subcutaneous Fat; FS: Fascia Superficialis; MR: Musculus Rectus Abdominalis; FP: Fascia Profunda; P: Peritoneum; E: Electrode; EG: Electrode Gel; S: Serosa; M: Myometrium; D: Decidua; C: Chorion; A: Amnion; VC: Vernix Caseosa; FE: Fetal Epidermis; MB; Maternal Bladder. Adapted from [26].

6.2 The Propagation Media

As suggested by Geselowitz [116, 107] since the effective frequency range of the ECG is below 1-2KHz and considering the distance between the body surface electrodes and the cardiac sources, the propagation medium of the maternal body may be considered as a linear instantaneous medium. The body surface recordings are hence a linear instantaneous projection of the cardiac sources and artifacts onto the axes of the recording electrode pairs. It is however known that the electrical impedance of the body volume conductor changes with respiration. Therefore despite of its linearity, the propagation medium is time-varying and the body surface recordings are rather nonstationary.

Seminal work performed by Oostendorp *et al.* [26, 27, 109, 110] in the 1980's provides one of the most complete pictures of how the abdominal fECG transpires at the surface electrodes. In their work, they considered all the conductive media through which the fECG passes before being recorded at the mother's abdominal skin surface. Fig. 17 illustrates the media through which the current generating the fECG is conducted to the surface of the maternal abdomen (at approximately 30 weeks into gestation), where it is then recorded. Note that there are many layers of biomaterial, with differing dielectric constants. However, the largest difference between any of these layers is the vernix caseosa (which forms between weeks 22-30) which has a conductivity of $\sigma = 10^{-7}$ to $10^{-5}\Omega^{-1}m^{-1}$. All other materials involved have a conductivity of $\sigma = 10^{-2}$ to $10^1\Omega^{-1}m^{-1}$. Moreover, the vernix is the only material which introduces a significant frequency dependency of the conductivity or phase. In fact, the vernix can cause a phase shift up to $\pi/2$ radians [109].

6.3 A Synthetic Fetal ECG Model

Based on the single channel ECG model proposed in [117] (and later updated in [118], [119], and [120]), the following dynamic model was suggested by Sameni *et al.* [121] for the $\mathbf{d}(t)$ dipole vector:

$$\begin{aligned}\dot{\theta} &= \omega \\ \dot{x} &= -\sum_i \frac{\alpha_i^x \omega}{(b_i^x)^2} \Delta\theta_i^x \exp\left[-\frac{(\Delta\theta_i^x)^2}{2(b_i^x)^2}\right] \\ \dot{y} &= -\sum_i \frac{\alpha_i^y \omega}{(b_i^y)^2} \Delta\theta_i^y \exp\left[-\frac{(\Delta\theta_i^y)^2}{2(b_i^y)^2}\right] \\ \dot{z} &= -\sum_i \frac{\alpha_i^z \omega}{(b_i^z)^2} \Delta\theta_i^z \exp\left[-\frac{(\Delta\theta_i^z)^2}{2(b_i^z)^2}\right]\end{aligned}\tag{4}$$

where $\Delta\theta_i^x = (\theta - \theta_i^x) \bmod(2\pi)$, $\Delta\theta_i^y = (\theta - \theta_i^y) \bmod(2\pi)$, $\Delta\theta_i^z = (\theta - \theta_i^z) \bmod(2\pi)$, and $\omega = 2\pi f$, where f is the beat-to-beat heart rate.

The first equation in (4) therefore generates a circular trajectory rotating with the frequency of the heart rate. Each of the three coordinates of the dipole vector $\mathbf{d}(t)$, is modeled by a summation of Gaussian functions with the amplitudes of α_i^x , α_i^y , and α_i^z ; widths of b_i^x , b_i^y , and b_i^z ; and located at the rotational angles of θ_i^x , θ_i^y , and θ_i^z . The intuition behind this set of equations is, that the baseline of each of the dipole coordinates is pushed up and down, as the trajectory approaches the centers of the Gaussian functions, generating a moving and variable length vector in the (x, y, z) space. Moreover, by adding perturbations or deviations to the parameters of (4) (i.e. considering them as random variables rather than deterministic constants), it is possible to generate more realistic cardiac dipoles with inter-beat variations.

Such a model, is of course, a simple approximation. However, it does provide a possible framework for testing signal processing algorithms. Various mixing models can be used to generate arbitrary projections onto a surface such as the maternal abdomen. See Sameni *et al.* [121] for more information.

7 Current Challenges

Despite of the richness of the literature, there are still several key areas that require further study in the field of fetal electrocardiography, particularly in the domain of multichannel noninvasive maternal abdominal measurements. The objective is to retrieve the fECG morphology with the highest possible fidelity, as required for morphological studies. In this context, the limiting factors and challenging signal processing issues include:

- weakness of fetal cardiac potentials and low conductivity layers surrounding the fetus which lead to low amplitude fECG at the maternal body surface;
- high interference of maternal ECG, uterus contraction, maternal respiratory, and motion artifact signals;
- possible movements of the fetus and the need for a sort of ‘canonical representation’ of the fetal cardiac signals with respect to the fetal body axis;
- development of automatic procedures that can be applied to long datasets with minimal interaction with an expert operator;
- providing confidence measures for the estimated cardiac signals and finding theoretical bounds for the amount of ‘retrievable information’ from body surface recordings in presence of noise.

Moreover, conventional ECG filtering methods are commonly based on some measure of time, frequency, or scale separability of signals and noise, which is common with all denoising techniques. However, cardiac signals have additional pseudo periodic structure, which appear not to have been well-utilized in ECG denoising schemes.

In previous studies multichannel decomposition methods have been commonly applied to the observed signals rather ‘blindly’ and there is generally no guarantee that the fetal components be extracted as

separate components. Therefore, an important issue is to increase the probability of extracting the fetal components and also to improve the quality of the extracted components, through appropriate preprocessing and using *a priori* information about the signal/noise mixtures. This is a necessary step for developing robust fetal ECG/MCG extraction algorithms.

Linear decomposition methods are very common, not only due to the validity of linear model itself but also for the simplicity of these models. (A discussion about the validity of linear models for ECG decomposition is presented in [80].) However, as mentioned before, there are cases in which the desired signals are not linearly separable and nonlinear decomposition is inevitable. (See [80] for related discussions.) Therefore, an interesting field of study is to combine linear and nonlinear techniques to benefit from the simplicity of linear transforms and the power of nonlinear methods at the same time.

Another related issue is to find physiological interpretations for components extracted by multichannel source separation techniques. While these methods are commonly based on the maximization of rather abstract statistical criteria, such as statistical independence, it is not very evident what the resultant components physically correspond to, when applied to real data. For cardiac signals, this issue is more crucial, when we consider that the heart is a distributed source and not a point source.

Morphologic modeling of the fECG is another issue of interest. While previous fetal ECG/MCG models concentrate on forward models based on electromagnetic and volume conduction theories [26, 28], for evaluating signal processing techniques based on body surface potentials, more abstract models are required. In fact, in order to evaluate and compare single or multichannel processing techniques, we need models that enable us to manipulate the signal processing aspects of the simulated signals such as their morphology, RR interval timing, fetal position, dimensionality, and SNR, without going into the details of signal propagation and volume conduction theories. For adult ECG, an example of such models was developed in [117], where single channel adult ECG was modeled with a dynamic model. However, the existing models have not considered the multidimensional nature of the ECG and are not appropriate for the evaluation of multichannel techniques that use the ‘mutual information’ of the different channels.

8 Recommendations and Future Possibilities

These observations lead us to make several suggestions for future directions. First, a set of public gold standard databases are required, such as those for adult ECGs found at PhysioNet [61]. Such a database would need to contain high quality ECG (2 kHz, 16 bit) multichannel recordings of hundreds of normal and abnormal fetuses for several stages of pregnancy and different conditions. Accompanying clinical information such as outcome Apgar score, maternal medical state and history, and possibly limited genetic information should also be recorded, together with the results of tests such as amniocentesis. Clinical annotations should also be recorded, such as fetal location, contractions, movements, artifacts and clinical events (such as decelerations).

Since the exact (or even approximate) optimal combination of electrode positions is currently unknown, and likely to be dependent on the location and activity of the fetus, a large number of surface electrodes needs to be used (perhaps around 32), covering most of the abdomen. From this, it may be possible to determine (dynamically), which subset of electrodes provides the maximal amount of information for a given presentation [122]. Nevertheless, one should note that the registration of large number of robust signals from the abdomen in long recording sessions, is challenging from, both, the measurement and clinical aspect. The measurement aspect concerns the design of low-noise multichannel recording systems and the sensor development technology. The clinical aspect concerns the difficulty of attaching/detaching large numbers of sensors to/from the abdomen of pregnant women. In order to have good contact with the skin, the clinician has to clean the skin and firmly attach the sensors. This procedure is rather time-taking and stressful for the pregnant woman (even for volunteer subjects).

For dilated mothers, fetal scalp electrodes may have been placed and could provide a gold (or rather silver) standard by which we can compare the processed abdominal fECG. Comparisons of clinical parameters, such as ST-level, QT-interval and R-peak location (for HRV studies) should be compared to ensure that the extraction methods do not lead to clinically significant changes in these parameters (for both healthy and unhealthy subjects).

Such a database will allow the objective comparison of different signal processing techniques for fECG extraction. Without such a resource, we are unable to judge which algorithms provide the best performance for a given condition. Since complex real time processing is now possible on modern embedded

systems, it is important that we assess how intelligent systems, neuro-fuzzy networks, morphological operators and other modern classification techniques can be employed to make the extracted information more useful for clinical applications.

One other area in which work is still required is that of modeling the fetal dipole and conductive medium of the womb, particularly in terms of personalized medicine. If patient-specific models can be made through simple non-invasive tests such as ultrasound- or impedance- based methods, then signal processing methods can use such information to make more accurate attempts at cleaning up the signal and extracting useful information.

Since robust and accurate fetal morphology extraction systems have not been properly evaluated, little work has been performed on the meaning of arrhythmias and changes in variability in the fetus. The underlying rhythms of the fECG, and associated phenomena such as respiration, require detailed investigations to determine what abnormal changes are indicative of adverse events, and can be used to provide decision support.

Finally, data fusion and information integration is almost a completely unexplored area of fetal monitoring. For better predictive performance and more accurate decision support, it is likely that a combination of cardiac activity recording modalities, such as the phonocardiogram, MCG, ultrasound, etc together with the invasive and/or non-invasive ECG will provide improved performance. Of course, simply adding data sources together does not guarantee more information, since extremely noisy signals may in fact lead to a reduction in the quality of the data. Therefore, the development of accurate and reliable signal quality metrics is essential. Signal quality metrics can be used either as a primary rejection scheme (whereby the channel is suppressed when the quality is below some pre-defined threshold) or can be used in a continuous fashion to unweight the contributions of a channel that is *less* trustworthy. For example, Li *et al.* [123, 124] have described a framework in which signal quality can be used to automatically used to reject variables derived from unreliable channels of data.

In conclusion, there are many areas in the field of fECG analysis which require attention before we can trust the results being produced by research algorithms and commercial devices. However, recent developments in signal processing are encouraging, and new developments in the field have the potential to positively impact patient care at little extra cost in terms of hardware.

9 Acknowledgments

The authors would like to thank the anonymous reviewers and Dr. A. Wolfberg for their helpful comments in preparing this manuscript. Parts of this work are derived from Dr. Sameni's Ph.D. thesis and therefore we would like to thank Profs. C. Jutten and M.B. Shamsollahi (who co-supervised Dr. Sameni), Prof. A. Van Oosterom and Dr. T. Oostendorp for their cooperation in sourcing their early works, and Dr. J. Stinstra, Dr. C.D. Lawrence, and Prof. R. T. Wakai for permitting the usage of some of the figures of this article. We would also like to thank Dr. Wolfberg and Courtenay Pettigrew for their efforts in collecting some of the data used in this article, and Jay Ward and Jim Robertson of MindChild Limited for their work on the data collection system and data review.

10 Disclosures

Both authors hold shares in MindChild Medical Inc., North Andover, MA, USA and patents in the field of ECG analysis.

References

- [1] *Congenital Heart Defects*, March of Dimes, 2005. [Online]. Available: http://www.marchofdimes.com/professionals/14332_1212.asp
- [2] A. M. Minino, M. P. Heron, S. L. Murphy, and K. D. Kochanek, "Deaths: Final data for 2004," *National Vital Statistics Reports*, vol. 55, no. 19, August 2007.
- [3] *Congenital Heart Defects in Children Fact Sheet*, American Heart Association, 2008. [Online]. Available: <http://www.americanheart.org/children>

- [4] E. Pajkrt, B. Weisz, H. V. Firth, and L. S. Chitty, "Fetal cardiac anomalies and genetic syndromes." *Prenat Diagn*, vol. 24, no. 13, pp. 1104–1115, Dec 2004. [Online]. Available: <http://dx.doi.org/10.1002/pd.1067>
- [5] A. Zuckerwar, R. Pretlow, J. Stoughton, and D. Baker, "Development of a piezopolymer pressure sensor for a portable fetal heart rate monitor," *IEEE Trans. Biomed. Eng.*, vol. 40, no. 9, pp. 963–969, 1993.
- [6] A. M. Vintzileos, D. Nochimson, E. R. Guzman, R. A. Knuppel, M. Lake, and B. S. Schifrin, "Intrapartum electronic fetal heart rate monitoring versus intermittent auscultation: a meta-analysis," *Obstet Gynecol*, pp. 149–55, 1995.
- [7] A. C. O. G. Practice, Bulletin, "Intrapartum fetal heart rate monitoring: Nomenclature, interpretation, and general management principles," American College of Obstetricians and Gynecologists, Tech. Rep. 109, 2009.
- [8] M. Peters, J. Crowe, J.-F. Piéri, H. Quartero, B. Hayes-Gill, D. James, J. Stinstra, and S. Shakespeare, "Monitoring the fetal heart non-invasively: a review of methods," *J. Perinat. Med.*, vol. 29, pp. 408–416, 2001.
- [9] J. G. Webster, Ed., *Medical Instrumentation: Application and Design*, 3rd ed. John Wiley & Sons, 1998.
- [10] D. Devedeux, C. Marque, S. Mansour, G. Germain, and J. Duchêne, "Uterine electromyography: a critical review." *Am J Obstet Gynecol*, vol. 169, no. 6, pp. 1636–1653, Dec 1993.
- [11] S. Snowden, N. A. Simpson, and J. J. Walker, "A digital system for recording the electrical activity of the uterus." *Physiol Meas*, vol. 22, no. 4, pp. 673–679, Nov 2001.
- [12] W. J. Tompkins, Ed., *Biomedical Digital Signal Processing: C Language Examples and Laboratory Experiments for the IBM PC*. Englewood Cliffs, NJ: Prentice Hall, 1993.
- [13] M. Cremer, "Über die Direkte Ableitung der Aktionströme des Menschlichen Herzens vom Oesophagus und Über das Elektrokardiogramm des Fetus," *Münchener Medizinische Wochenschrift*, vol. 53, pp. 811–813, April 1906.
- [14] A. V. N. Goodyer, A. J. Geiger, and W. M. Monroe, "Clinical fetal electrocardiography," *Yale J. Biol. Med.*, no. 15, pp. 1–19, 1942.
- [15] D. B. Lindsley, "Heart and Brain Potentials of Human Fetuses in Utero," *The American Journal of Psychology*, vol. 55, no. 3, pp. 412–416, July 1942.
- [16] C. Sureau, "Electrocardiographie foetale humaine normale," *Bull. Soc. Roy. Belg. Gynec. Obstet.*, vol. 123, no. 30, 1960.
- [17] E. H. Hon, "The instrumentation of fetal heart rate and fetal electrocardiography i. a fetal heart rate monitor," *Conn Med*, vol. 24, pp. 289–293, 1960.
- [18] A. G. Farvet, "Computer Matched Filter Location of Fetal R-Waves," *Medical & Biological Engineering*, vol. 6, no. 5, pp. 467–475, September 1968.
- [19] B. Widrow, J. Glover, J. McCool, J. Kaunitz, C. Williams, H. Hearn, J. Zeidler, E. Dong, and R. Goodlin, "Adaptive noise cancelling: principles and applications," *Proc. IEEE*, vol. 63, no. 12, pp. 1692–1716, 1975.
- [20] A. van Oosterom, "Spatial filtering of the fetal electrocardiogram," *J. Perinat Med.*, vol. 14, no. 6, pp. 411–419, 1986.
- [21] *PubMed*, The U.S. National Library of Medicine and the National Institutes of Health, 2008. [Online]. Available: <http://www.pubmed.gov/>
- [22] L. Jana, *Early Fetal Heart Development: 0-9 Weeks*, The Dr. Spock Company, 2004. [Online]. Available: <http://www.drspock.com/article/0,1510,5287,00.html>

- [23] P. van Leeuwen, S. Lange, A. Klein, D. Geue, and D. H. Grünemeyer, “Dependency of magneto-cardiographically determined fetal cardiac time intervals on gestational age, gender and postnatal biometrics in healthy pregnancies,” *BMC Pregnancy Childbirth*, vol. 4, no. 6, 2004.
- [24] C. D. Lawrence, *Fetal Heart Development*, 1995. [Online]. Available: <http://user.gru.net/clawrence/vccl/chpt1/embryo.htm>
- [25] M. C. Allen, P. K. Donohue, and A. E. Dusman, “The limit of viability – neonatal outcome of infants born at 22 to 25 weeks’ gestation,” *Bull. Soc. Roy. Belg. Gynec. Obstet.*, vol. 329, no. 22, pp. 1597–1601, Oct 1993.
- [26] T. Oostendorp, *Modeling the Fetal ECG*. Ph.D. dissertation, K. U. Nijmegen, The Netherlands, 1989.
- [27] T. Oostendorp, A. van Oosterom, and H. Jongasma, “Electrical properties of tissues involved in the conduction of fetal ECG,” *Biomed Eng Comput*, vol. 27, pp. 322–324, 1989.
- [28] J. Stinstra, “Reliability of the fetal magnetocardiogram,” Ph.D. dissertation, University of Twente, Enschede, The Netherlands, 2001. [Online]. Available: <http://doc.utwente.nl/35964/>
- [29] R. A. Brace and E. J. Wolf, “Normal amniotic fluid volume changes throughout pregnancy.” *Am J Obstet Gynecol*, vol. 161, no. 2, pp. 382–388, Aug 1989.
- [30] E. F. Magann, J. D. Bass, S. P. Chauhan, R. A. Young, N. S. Whitworth, and J. C. Morrison, “Amniotic fluid volume in normal singleton pregnancies.” *Obstet Gynecol*, vol. 90, no. 4 Pt 1, pp. 524–528, Oct 1997.
- [31] P. N. Baker, I. R. Johnson, P. A. Gowland, J. Hykin, V. Adams, P. Mansfield, and B. S. Worthington, “Measurement of fetal liver, brain and placental volumes with echo-planar magnetic resonance imaging.” *Br J Obstet Gynaecol*, vol. 102, no. 1, pp. 35–39, Jan 1995.
- [32] E. K. Osei and K. Faulkner, “Fetal position and size data for dose estimation.” *Br J Radiol*, vol. 72, no. 856, pp. 363–370, Apr 1999.
- [33] J. B. Roche and E. H. Hon, “The fetal electrocardiogram. V. Comparison of lead systems,” *Am J Obstet Gynecol*, vol. 92, pp. 1149–1159, Aug 1965.
- [34] M. J. Sexton and L. A. Latson, *Fetal blood flow*, Healthwise, Inc., October 2005. [Online]. Available: <http://www.memorialhermann.org/>
- [35] *Physiology*, Cardiovascular Consultants, 2006. [Online]. Available: <http://www.cardioconsult.com/Physiology/>
- [36] W. Einthoven, “Über die Form des menschlichen electrocardiogramms,” *Arch Gesamte Physiol.*, vol. 60, pp. 101–123, 1895.
- [37] J. W. Hurst, “Naming of the waves in the ECG, with a brief account of their genesis,” *Circulation*, vol. 98, no. 18, pp. 1937–1942, Nov 1998.
- [38] Z. Ihara, A. van Oosterom, and R. Hoekema, “Atrial repolarization as observable during the PQ interval,” *Journal of Electrocardiology*, vol. 39, pp. 290–297, 2006.
- [39] R. Barr, “Genesis of the electrocardiogram,” in *Comprehensive Electrocardiology*, P. W. Macfarlane and T. T. V. Lawrie, Eds. Oxford: Pergamon Press, 1989, ch. 5, pp. 129–151.
- [40] N. Horimoto, S. Morokuma, and H. Nakano, “Does maternal blood cortisol entrain fetal diurnal rhythm?” *Early Human Development*, vol. 76, no. 1, pp. 55–64, 2004.
- [41] C. Maggioni, G. Cornelissen, K. Otsuka, F. Halberg, D. Consonni, and U. Nicolini, “Circadian rhythm of maternal blood pressure and fetal growth,” *Biomed Pharmacother*, vol. 59, no. 1, pp. S86–S91, October 2005.

- [42] V. E. Murphy, R. Smith, W. B. Giles, and V. L. Clifton, "Endocrine Regulation of Human Fetal Growth: The Role of the Mother, Placenta, and Fetus," *Endocr Rev*, vol. 27, no. 2, pp. 141–169, 2006. [Online]. Available: <http://edrv.endojournals.org/cgi/content/abstract/27/2/141>
- [43] L. K. Hornberger and D. J. Sahn, "Rhythm abnormalities of the fetus." *Heart*, vol. 93, no. 10, pp. 1294–1300, Oct 2007. [Online]. Available: <http://dx.doi.org/10.1136/hrt.2005.069369>
- [44] P. van Leeuwen, S. Lange, H. Bettermann, D. Grönemeyer, and W. Hatzmann, "Fetal heart rate variability and complexity in the course of pregnancy," *Early Hum Dev*, vol. 54, no. 3, pp. 259–269, Apr 1999.
- [45] R. T. Wakai, "Assessment of fetal neurodevelopment via fetal magnetocardiography." *Exp Neurol*, vol. 190 Suppl 1, pp. S65–S71, Nov 2004. [Online]. Available: <http://dx.doi.org/10.1016/j.expneurol.2004.04.019>
- [46] M. Muro, H. Shono, M. Shono, A. Uchiyama, and T. Iwasaka, "Changes in diurnal variations in the fetal heart rate baseline with advancing gestational age," *Sleep and Biological Rhythms*, vol. 2:1, pp. 83–85, 2004.
- [47] S. Lunshof, K. Boer, H. Wolf, G. van Hoffen, N. Bayram, and M. Mirmiran, "Fetal and maternal diurnal rhythms during the third trimester of normal pregnancy: Outcomes of computerized analysis of continuous twenty-four-hour fetal heart rate recordings," *American Journal of Obstetrics and Gynecology*, vol. 178, pp. 247–254, 1998.
- [48] H. Shono, M. Muro, M. Kohara, Y. Ito, T. Nagasawa, and H. Sugimori, "Fetal heart rate recorder for long-duration use in active full-term pregnant women," *Obstetrics & Gynecology*, vol. 83, pp. 301–6, 1994.
- [49] K. R. Greene and K. G. Rosen, "Long-term st waveform changes in the ovine fetal electrocardiogram: the relationship to spontaneous labour and intrauterine death," *Clinical Physics and Physiological Measurement*, vol. 10, no. 4B, pp. 33–40, 1989. [Online]. Available: <http://stacks.iop.org/0143-0815/10/33>
- [50] K. Rosen, A. Dagbjartsson, B. Henriksson, H. Lagercrantz, and I. Kjellmer, "The relationship between circulating catecholamines and st waveform in the fetal lamb electrocardiogram during hypoxia 3," *Am J Obstet Gynecol*, vol. 149, pp. 190–195, 1984.
- [51] J. Westgate, L. Bennet, C. Brabyn, C. Williams, and A. Gunn, "St waveform changes during repeated umbilical cord occlusions in near-term fetal sheep," *Am J Obstet Gynecol*, vol. 184, pp. 743–751, 2001.
- [52] J. Westgate, M. Harris, J. S. H. Curnow, and K. R. Greene, "Randomised trial of cardiotocography alone or with st waveform analysis for intrapartum monitoring," *The Lancet*, vol. 340, no. 8813, pp. 194 – 198, 1992. [Online]. Available: <http://www.sciencedirect.com/science/article/B6T1B-49K5G3B-7H/2/821ed8d2f7a9e29f6c095caae5df4ea>
- [53] I. Amer-Wahlin, C. Hellsten, H. Noren, H. Hagberg, A. Herbst, I. Kjellmer, H. Lilja, C. Lindoff, M. Mansson, L. Martensson, P. Olofsson, A. Sundstrom, and K. Marsal, "Cardiotocography only versus cardiotocography plus st analysis of fetal electrocardiogram for intrapartum fetal monitoring: a swedish randomised controlled trial," *Lancet*, vol. 358, pp. 534–538, 2001.
- [54] A. Kwee, van der Hoorn-van den Beld CW, J. Veerman, A. Dekkers, and G. Visser, "Stan s21 fetal heart monitor for fetal surveillance during labor: an observational study in 637 patients," *J Matern Fetal Neonatal Med*, vol. 15, pp. 400–407, 2004.
- [55] I. Amer-Wahlin, K. Kallen, A. Herbst, H. Rydhstroem, A. Sundstrom, and K. Marsal, "Implementation of new medical techniques: experience from the swedish randomized controlled trial on fetal ecg during labor," *J Matern Fetal Neonatal Med*, vol. 18, pp. 93–100, 2005.

- [56] M. Westerhuis, K. Moons, E. van Beek, S. Bijvoet, A. Drogtop, H. van Geijn, J. van Lith, B. Mol, J. Nijhuis, S. G. Oei, M. Porath, R. Rijnders, N. Schuitemaker, I. van der Tweel, G. Visser, C. Willekes, and A. Kwee, "A randomised clinical trial on cardiotocography plus fetal blood sampling versus cardiotocography plus st-analysis of the fetal electrocardiogram (stan(r)) for intrapartum monitoring," *BMC Pregnancy and Childbirth*, vol. 7, no. 1, p. 13, 2007. [Online]. Available: <http://www.biomedcentral.com/1471-2393/7/13>
- [57] N. J. Outram, E. C. Ifeachor, P. W. J. V. Eetvelt, and J. S. H. Curnow, "Techniques for optimal enhancement and feature extraction of fetal electrocardiogram," in *IEE Proc.-Sci. Meas. Technol.*, vol. 142, no. 6, November 1995, pp. 482–489.
- [58] E. Genevier, A. Deans, M. Carter, and P. Steer, "Separation of fetal and maternal ECG complexes from a mixed signal using an algorithm based on linear regression," *Medical Engineering & Physics*, vol. 17, no. 7, pp. 514–522, October 1995.
- [59] K.-C. Lai and J. J. Shynk, "A successive cancellation algorithm for fetal heart-rate estimation using an intrauterine ECG signal," *IEEE Trans. Biomed. Eng.*, vol. 49, no. 9, pp. 943–954, 2002.
- [60] B. De Moor, *Database for the Identification of Systems (DaISy)*, 1997. [Online]. Available: <http://homes.esat.kuleuven.be/~smc/daisy/>
- [61] A. L. Goldberger, L. A. N. Amaral, L. Glass, J. M. Hausdorff, P. C. Ivanov, R. G. Mark, J. E. Mietus, G. B. Moody, C.-K. Peng, and H. E. Stanley, "PhysioBank, PhysioToolkit, and PhysioNet: Components of a new research resource for complex physiologic signals," *Circulation*, vol. 101, no. 23, pp. e215–e220, June 2000, circulation Electronic Pages: <http://circ.ahajournals.org/cgi/content/full/101/23/e215>.
- [62] J. Wladimiroff and G. Pilu, Eds., *Ultrasound and the Fetal Heart*. New York, NY: Parthenon Publishing, 1996.
- [63] J. A. Drose, *Fetal Echocardiography*. Saunders W B Co, 1998.
- [64] F. Kovacs, M. Torok, and I. Habermajer, "A rule-based phonocardiographic method for long-term fetal heart rate monitoring," *IEEE Trans. Biomed. Eng.*, vol. 47, no. 1, pp. 124–130, 2000.
- [65] P. Várady, L. Wildt, Z. Benyó, and A. Hein, "An advanced method in fetal phonocardiography," *Computer Methods and Programs in Biomedicine*, vol. 71, no. 3, pp. 283–296, 2003.
- [66] *CancerWEB*, Centre for Cancer Education, University of Newcastle upon Tyne, 1998. [Online]. Available: <http://cancerweb.ncl.ac.uk/>
- [67] *Phonocardiography*, Encyclopaedia Britannica, Inc., 2008. [Online]. Available: <http://www.britannica.com/>
- [68] S. L. Bloom, C. Y. Spong, E. Thom, M. W. Varner, D. J. Rouse, S. Weininger, S. M. Ramin, S. N. Caritis, A. Peaceman, Y. Sorokin, A. Sciscione, M. Carpenter, B. Mercer, J. Thorp, F. Malone, M. Harper, J. Iams, and G. Anderson, "Fetal pulse oximetry and cesarean delivery," *N Engl J Med*, vol. 355, no. 21, pp. 2195–2202, 2006, for the National Institute of Child Health and Human Development Maternal-Fetal Medicine Units Network. [Online]. Available: <http://content.nejm.org/cgi/content/abstract/355/21/2195>
- [69] M. G. Signorini, G. Magenes, S. Cerutti, and D. Arduini, "Linear and nonlinear parameters for the analysis of fetal heart rate signal from cardiotocographic recordings," *IEEE Trans Biomed Eng*, vol. 50, no. 3, pp. 365–374, Mar 2003. [Online]. Available: <http://dx.doi.org/10.1109/TBME.2003.808824>
- [70] H. P. van Geijn, "Developments in CTG analysis," *Baillieres Clin Obstet Gynaecol.*, vol. 10, no. 2, pp. 185–209, June 1996.
- [71] V. Kariniemi and K. Hukkinen, "Quantification of fetal heart rate variability by magnetocardiography and direct electrocardiography," *Am J Obstet Gynecol*, vol. 128, no. 5, pp. 526–30, July 1977.

- [72] M. Chen, R. T. Wakai, and B. V. Veen, "Eigenvector based spatial filtering of fetal biomagnetic signals." *J Perinat Med*, vol. 29, no. 6, pp. 486–496, 2001.
- [73] H. ter Brake, A. Rijpma, J. Stinstra, J. Borgmann, H. Holland, H. Krooshoop, M. Peters, J. Flokstra, H. Quartero, and H. Rogalla, "Fetal magnetocardiography: clinical relevance and feasibility," *Physica C*, vol. 368, pp. 10–17, March 2002. [Online]. Available: <http://www.ingentaconnect.com/content/els/09214534/2002/00000368/00000001/art01132>
- [74] R. Wakai and W. Lutter, "Matched-filter template generation via spatial filtering: application to fetal biomagnetic recordings," *IEEE Trans. Biomed. Eng.*, vol. 49, no. 10, pp. 1214–1217, 2002.
- [75] R. Kautz, "Jim Zimmerman and the SQUID," *Applied Superconductivity, IEEE Transactions on*, vol. 11, no. 1, pp. 1026–1031, March 2001.
- [76] S. D. Larks, "Present status of fetal electrocardiography," *Bio-Medical Electronics, IRE Transactions on*, vol. 9, no. 3, pp. 176–180, July 1962.
- [77] Y. Park, K. Lee, D. Youn, N. Kim, W. Kim, and S. Park, "On detecting the presence of fetal R-wave using the moving averaged magnitude difference algorithm," *IEEE Trans. Biomed. Eng.*, vol. 39, no. 8, pp. 868–871, August 1992.
- [78] M. Shao, K. Barner, and M. Goodman, "An interference cancellation algorithm for noninvasive extraction of transabdominal fetal electroencephalogram (TaFEEG)," *IEEE Trans. Biomed. Eng.*, vol. 51, no. 3, pp. 471–483, 2004.
- [79] S. M. M. Martens, C. Rabotti, M. Mischi, and R. J. Sluijter, "A robust fetal ECG detection method for abdominal recordings," *Physiol Meas*, vol. 28, no. 4, pp. 373–388, Apr 2007. [Online]. Available: <http://dx.doi.org/10.1088/0967-3334/28/4/004>
- [80] R. Sameni, "Extraction of Fetal Cardiac Signals from an Array of Maternal Abdominal Recordings," Ph.D. dissertation, Sharif University of Technology – Institut National Polytechnique de Grenoble, July 2008. [Online]. Available: <http://www.sameni.info/Publications/Thesis/PhDThesis.pdf>
- [81] R. Sameni, M. B. Shamsollahi, C. Jutten, and G. D. Clifford, "A Nonlinear Bayesian Filtering Framework for ECG Denoising," *IEEE Trans. Biomed. Eng.*, vol. 54, no. 12, pp. 2172–2185, Dec 2007.
- [82] R. Sameni, M. B. Shamsollahi, and C. Jutten, "Model-based Bayesian filtering of cardiac contaminants from biomedical recordings," *Physiological Measurement*, vol. 29, no. 5, pp. 595–613, May 2008.
- [83] C. Li, C. Zheng, and C. Tai, "Detection of ECG characteristic points using wavelet transforms," *Biomedical Engineering, IEEE Transactions on*, vol. 42, no. 1, pp. 21–28, January 1995.
- [84] A. Khamene and S. Negahdaripour, "A new method for the extraction of fetal ecg from the composite abdominal signal," *Biomedical Engineering, IEEE Transactions on*, vol. 47, no. 4, pp. 507–516, April 2000.
- [85] M. Akay, M. Akay, and E. Mulder, "Examining fetal heart-rate variability using matching pursuits," *IEEE Eng. Med. Biol. Mag.*, vol. 15, no. 5, pp. 64–67, 1996.
- [86] A. A. Damen and J. Van Der Kam, "The use of the singular value decomposition in electrocardiography," *Med Biol Eng Comput*, vol. 20, no. 4, pp. 473–82, July 1982.
- [87] J. Vanderschoot, D. Callaerts, W. Sansen, J. Vandewalle, G. Vantrappen, and J. Janssens, "Two methods for optimal MECG elimination and FECG detection from skin electrode signals," *IEEE Trans Biomed Eng*, vol. BME-34, pp. 233–243, 1987.
- [88] D. Callaerts, "Signal separation methods based on singular value decomposition and their application to the real-time extraction of the fetal electrocardiogram from cutaneous recordings," Ph.D. dissertation, K.U.Leuven - E.E. Dept., Dec. 1989.

- [89] P. P. Kanjilal, S. Palit, and G. Saha, "Fetal ECG extraction from single-channel maternal ECG using singular value decomposition," *IEEE Trans. Biomed. Eng.*, vol. 44, pp. 51–59, Jan. 1997.
- [90] V. Zarzoso, A. K. Nandi, and E. Bacharakis, "Maternal and fetal ECG separation using blind source separation methods," *IMA J. Math. Appl. Med. Biol.*, vol. 14, pp. 207–225, 1997.
- [91] V. Zarzoso and A. K. Nandi, "Comparison between blind separation and adaptive noise cancellation techniques for fetal electrocardiogram extraction," in *IEE Colloq. Medical Applications for Signal Processing*, 1999, pp. 1/1–1/6.
- [92] V. Zarzoso and A. Nandi, "Noninvasive fetal electrocardiogram extraction: blind separation versus adaptive noise cancellation," *Biomedical Engineering, IEEE Transactions on*, vol. 48, no. 1, pp. 12–18, January 2001.
- [93] J.-F. Cardoso, "Multidimensional independent component analysis," in *Proceedings of the IEEE International Conference on Acoustics, Speech, and Signal Processing (ICASSP '98)*, vol. 4, May 1998, pp. 1941–1944.
- [94] L. De Lathauwer, B. De Moor, and J. Vandewalle, "Fetal electrocardiogram extraction by blind source subspace separation," *IEEE Trans. Biomed. Eng.*, vol. 47, pp. 567–572, May 2000.
- [95] A. K. Barros and A. Cichocki, "Extraction of specific signals with temporal structure." *Neural Comput.*, vol. 13, no. 9, pp. 1995–2003, Sep 2001. [Online]. Available: <http://dx.doi.org/10.1162/089976601750399272>
- [96] Z.-L. Zhang and Z. Yi, "Extraction of temporally correlated sources with its application to non-invasive fetal electrocardiogram extraction," *Neurocomputing*, vol. 69, no. 7-9, pp. 894–899, 2006.
- [97] Y. Li and Z. Yi, "An algorithm for extracting fetal electrocardiogram," *Neurocomput.*, vol. 71, no. 7-9, pp. 1538–1542, 2008.
- [98] V. Vigneron, A. Paraschiv-Ionescu, A. Azancot, O. Sibony, and C. Jutten, "Fetal electrocardiogram extraction based on non-stationary ICA and wavelet denoising," *Signal Processing and Its Applications, 2003. Proceedings. Seventh International Symposium on*, vol. 2, pp. 69–72 vol.2, 1-4 July 2003.
- [99] M. G. Jafari and J. A. Chambers, "Fetal electrocardiogram extraction by sequential source separation in the wavelet domain." *IEEE Trans Biomed Eng*, vol. 52, no. 3, pp. 390–400, Mar 2005. [Online]. Available: <http://dx.doi.org/10.1109/TBME.2004.842958>
- [100] R. Sameni, C. Jutten, and M. B. Shamsollahi, "Multichannel electrocardiogram decomposition using periodic component analysis," *IEEE Trans. Biomed. Eng.*, vol. 55, no. 8, pp. 1935–1940, Aug. 2008.
- [101] —, "A Deflation Procedure for Subspace Decomposition," *IEEE Transactions on Signal Processing*, vol. 58, no. 4, pp. 2363–2374, April 2010.
- [102] T. Schreiber and D. T. Kaplan, "Signal separation by nonlinear projections: The fetal electrocardiogram," *Phys. Rev. E.*, vol. 53, pp. R4326–R4329, 1996.
- [103] —, "Nonlinear noise reduction for electrocardiograms," *Chaos*, vol. 6, no. 1, pp. 87–92, 1996.
- [104] M. Richter, T. Schreiber, and D. T. Kaplan, "Fetal ECG Extraction with Nonlinear State-Space Projections," *IEEE Trans. Biomed. Eng.*, vol. 45, no. 1, pp. 133–137, January 1998.
- [105] H. Kantz and T. Schreiber, "Human ECG: nonlinear deterministic versus stochastic aspects," vol. 145, no. 6, Nov 1998, pp. 279–284.
- [106] M. Kotas, "Projective filtering of time-aligned ECG beats," *IEEE Trans. Biomed. Eng.*, vol. 51, no. 7, pp. 1129–1139, 2004.
- [107] D. B. Geselowitz, "On the Theory of the Electrocardiogram," *Proc. IEEE*, vol. 77, pp. 857–876, Jun. 1989.

- [108] R. Gulrajani, “The forward and inverse problems of electrocardiography,” *Engineering in Medicine and Biology Magazine, IEEE*, vol. 17, no. 5, pp. 84–101, 122, Sep/Oct 1998.
- [109] T. F. Oostendorp, A. van Oosterom, and H. W. Jongsma, “The fetal ECG throughout the second half of gestation,” *Clin Phys physiol Meas.*, vol. 10, no. 2, pp. 147–160, 1989.
- [110] ———, “The effect of changes in the conductive medium on the fetal ECG throughout gestation,” *Clin. Phys. physiol Meas.*, vol. 10 Sup. B, pp. 11–20, 1989.
- [111] O. Dössel, “Inverse problem of electro- and magnetocardiography: Review and recent progress,” *Int. J. Bioelectromagnetism*, vol. 2, no. 2, 2000. [Online]. Available: <http://www.ijbem.org/volume2/number2/doessel/paper.htm>
- [112] A. van Oosterom, “Beyond the dipole; modeling the genesis of the electrocardiogram,” *100 years Einthoven*, pp. 7–15, 2002, the Einthoven Foundation, Leiden.
- [113] J. A. Malmivuo and R. Plonsey, *Bioelectromagnetism, Principles and Applications of Bioelectric and Biomagnetic Fields*. Oxford University Press, 1995. [Online]. Available: <http://butler.cc.tut.fi/~malmivuo/bem/bembook>
- [114] E. Frank, “An Accurate, Clinically Practical System For Spatial Vectorcardiography,” *Circulation*, vol. 13, no. 5, pp. 737–749, 1956. [Online]. Available: <http://circ.ahajournals.org/cgi/content/abstract/13/5/737>
- [115] G. F. Fletcher, G. Balady, V. F. Froelicher, L. H. Hartley, W. L. Haskell, and M. L. Pollock, “Exercise Standards : A Statement for Healthcare Professionals From the American Heart Association,” *Circulation*, vol. 91, no. 2, pp. 580–615, 2001. [Online]. Available: <http://circ.ahajournals.org>
- [116] D. B. Geselowitz, “On bioelectric potentials in an inhomogeneous volume conductor,” *Biophys J*, vol. 7, pp. 1–11, 1967.
- [117] P. E. McSharry, G. D. Clifford, L. Tarassenko, and L. A. Smith, “A Dynamic Model for Generating Synthetic Electrocardiogram Signals,” *IEEE Trans. Biomed. Eng.*, vol. 50, pp. 289–294, March 2003.
- [118] G. D. Clifford and P. E. McSharry, “A realistic coupled nonlinear artificial ECG, BP, and respiratory signal generator for assessing noise performance of biomedical signal processing algorithms,” *Proc of SPIE International Symposium on Fluctuations and Noise*, vol. 5467, no. 34, pp. 290–301, 2004.
- [119] R. Sameni, M. B. Shamsollahi, C. Jutten, and M. Babaie-Zadeh, “Filtering Noisy ECG Signals Using the Extended Kalman Filter Based on a Modified Dynamic ECG Model,” in *Proceedings of the 32nd Annual International Conference on Computers in Cardiology*, Lyon, France, September 25-28 2005, pp. 1017–1020.
- [120] G. D. Clifford, “A novel framework for signal representation and source separation,” *Journal of Biological Systems*, vol. 14, no. 2, pp. 169–183, June 2006.
- [121] R. Sameni, G. D. Clifford, C. Jutten, and M. B. Shamsollahi, “Multichannel ECG and Noise Modeling: Application to Maternal and Fetal ECG Signals,” *EURASIP Journal on Advances in Signal Processing*, vol. 2007, pp. Article ID 43407, 14 pages, 2007, ISSN 1687-6172, doi:10.1155/2007/43407. [Online]. Available: <http://www.hindawi.com/GetArticle.aspx?doi=10.1155/2007/43407>
- [122] R. Sameni, F. Vrins, F. Parmentier, C. Hérail, V. Vigneron, M. Verleysen, C. Jutten, and M. Shamsollahi, “Electrode Selection for Noninvasive Fetal Electrocardiogram Extraction using Mutual Information Criteria,” in *Proc. of the 26th International Workshop on Bayesian Inference and Maximum Entropy Methods in Science and Engineering (MaxEnt 2006)*, vol. 872, CNRS, Paris, France, July 8-13 2006, pp. 97–104.

- [123] Q. Li, R. G. Mark, and G. D. Clifford, "Robust heart rate estimation from multiple asynchronous noisy sources using signal quality indices and a Kalman filter," *IOP Physiol Meas*, vol. 29, no. 1, pp. 15–32, Jan 2008.
- [124] —, "Artificial arterial blood pressure artifact models and an evaluation of a robust blood pressure and heart rate estimator," *BioMedical Engineering OnLine*, vol. 8, no. 1, p. 13, 2009. [Online]. Available: <http://www.biomedical-engineering-online.com/content/8/1/13>

Table 1: Comparison of the different methods and their applications

	Method	Overall Performance	SNR improvement	Computational Cost	Realtime*	Implementation Complexity	Operator interaction	Applications/Comments
Single-Channel	FIR/IIR Filtering	Low	Low	Low	Yes	Simple	Not required	Simple frequency domain denoising
	Wiener Filtering	Medium	Medium	Medium	Possible	Medium	Not required	Denoising using morphologic or spectral priors; realtime implementation is only possible for the causal Wiener filter
	Wavelet Denoising	Medium	Medium	Low	Yes	Medium	Not required	More robust denoising for signal-noise mixtures having different scales
	Adaptive Filtering	Medium	Medium	Medium	Yes	Medium	Sometimes required	Low quality maternal ECG cancellation or fetal ECG enhancement for fetal HRV analysis or average morphologic studies; extendable to multichannels
	Nonlinear Filtering	Medium	Medium/High	High	No	Complex	Required	Maternal ECG cancellation or fetal ECG enhancement in single channel recordings or degenerate multichannel mixtures
	Kalman Filtering	High	High	Median	Yes	Complex	Sometimes required	ECG denoising, maternal ECG removal or fetal ECG enhancement having the R-peaks of the signal and with rather consistent morphologic shape; extendable to multichannels
	PCA/SVD/Factor Analysis	Low	Low	Low	Possible[88]	Simple	Not required	Dimension reduction for high-dimensional data and noise removal
Multichannel**	ICA	Medium	Medium	Medium/High	No	Medium/Complex	Required	Blind or semi-blind decomposition of multichannel maternal-fetal mixtures without considerable <i>a priori</i> information and in relatively high SNRs SNR improvement not guaranteed
	π CA	Medium	High	Low	No	Simple	Not required	Decomposition of multichannel ECG mixtures having the R-peaks of the signal; dimension reduction with minimal ECG information loss
	Subspace Decomposition by Deflation	High	High	Medium/High	No	Complex	Sometimes required	Decomposition of (possibly) degenerate multichannel mixtures of desired and undesired subspaces having <i>a priori</i> information about the signal-noise structures

* Here we have not considered the possibility of block delayed realtime analysis.

** The indicated performances and complexities of multichannel methods are generally higher than single-channel methods; the qualitative descriptions should only be compared within each group separately.