



UNIVERSITY
OF WOLLONGONG
AUSTRALIA

University of Wollongong
Research Online

Faculty of Engineering and Information Sciences -
Papers: Part A

Faculty of Engineering and Information Sciences

2017

A robust and tuneable mid-infrared optical switch enabled by bulk Dirac fermions

Chunhui Zhu
Nanjing University

Fengqiu Wang
Nanjing University, fwang@nju.edu.cn

Yafei Meng
Nanjing University

Xiang Yuan
Nanjing University

Faxian Xiu
Nanjing University

See next page for additional authors

Publication Details

Zhu, C., Wang, F., Meng, Y., Yuan, X., Xiu, F., Luo, H., Wang, Y., Li, J., Lv, X., He, L., Xu, Y., Liu, J., Zhang, C., Shi, Y., Zhang, R. & Zhu, S. (2017). A robust and tuneable mid-infrared optical switch enabled by bulk Dirac fermions. *Nature Communications*, 8, 14111-1-14111-7.

Research Online is the open access institutional repository for the University of Wollongong. For further information contact the UOW Library:
research-pubs@uow.edu.au

A robust and tuneable mid-infrared optical switch enabled by bulk Dirac fermions

Abstract

Pulsed lasers operating in the mid-infrared (3–20 μm) are important for a wide range of applications in sensing, spectroscopy, imaging and communications. Despite recent advances with mid-infrared gain platforms, the lack of a capable pulse generation mechanism remains a significant technological challenge. Here we show that bulk Dirac fermions in molecular beam epitaxy grown crystalline Cd_3As_2 , a three-dimensional topological Dirac semimetal, constitutes an exceptional ultrafast optical switching mechanism for the mid-infrared. Significantly, we show robust and effective tuning of the scattering channels of Dirac fermions via an element doping approach, where photocarrier relaxation times are found flexibly controlled over an order of magnitude (from 8 ps to 800 fs at 4.5 μm). Our findings reveal the strong impact of Cr doping on ultrafast optical properties in Cd_3As_2 and open up the long sought parameter space crucial for the development of compact and high-performance mid-infrared ultrafast sources.

Disciplines

Engineering | Science and Technology Studies

Publication Details

Zhu, C., Wang, F., Meng, Y., Yuan, X., Xiu, F., Luo, H., Wang, Y., Li, J., Lv, X., He, L., Xu, Y., Liu, J., Zhang, C., Shi, Y., Zhang, R. & Zhu, S. (2017). A robust and tuneable mid-infrared optical switch enabled by bulk Dirac fermions. *Nature Communications*, 8 14111-1-14111-7.

Authors

Chunhui Zhu, Fengqiu Wang, Yafei Meng, Xiang Yuan, Faxian Xiu, Hongyu Luo, Yazhou Wang, Jianfeng Li, Xinjie Lv, Liang He, Yongbing Xu, Junfeng Liu, C Zhang, Yi Shi, Rong Zhang, and Shining Zhu

ARTICLE

Received 3 Jun 2016 | Accepted 29 Nov 2016 | Published 20 Jan 2017

DOI: 10.1038/ncomms14111

OPEN

A robust and tuneable mid-infrared optical switch enabled by bulk Dirac fermions

Chunhui Zhu^{1,2,*}, Fengqiu Wang^{1,2,*}, Yafei Meng^{1,2,*}, Xiang Yuan^{2,3}, Faxian Xiu^{2,3}, Hongyu Luo⁴, Yazhou Wang⁴, Jianfeng Li⁴, Xinjie Lv^{2,5}, Liang He^{1,2}, Yongbing Xu^{1,2}, Junfeng Liu⁶, Chao Zhang⁷, Yi Shi^{1,2}, Rong Zhang^{1,2} & Shining Zhu^{2,5}

Pulsed lasers operating in the mid-infrared (3–20 μm) are important for a wide range of applications in sensing, spectroscopy, imaging and communications. Despite recent advances with mid-infrared gain platforms, the lack of a capable pulse generation mechanism remains a significant technological challenge. Here we show that bulk Dirac fermions in molecular beam epitaxy grown crystalline Cd_3As_2 , a three-dimensional topological Dirac semimetal, constitutes an exceptional ultrafast optical switching mechanism for the mid-infrared. Significantly, we show robust and effective tuning of the scattering channels of Dirac fermions via an element doping approach, where photocarrier relaxation times are found flexibly controlled over an order of magnitude (from 8 ps to 800 fs at 4.5 μm). Our findings reveal the strong impact of Cr doping on ultrafast optical properties in Cd_3As_2 and open up the long sought parameter space crucial for the development of compact and high-performance mid-infrared ultrafast sources.

¹School of Electronic Science and Engineering, Nanjing University, Nanjing 210093, China. ²Collaborative Innovation Center of Advanced Microstructures, Nanjing University, Nanjing 210093, China. ³State Key Laboratory of Surface Physics and Department of Physics, Fudan University, Shanghai 200433, China. ⁴School of Optoelectronic Information, University of Electronic Science and Technology of China, Chengdu 610054, China. ⁵National Laboratory of Solid State Microstructures and School of Physics, Nanjing University, Nanjing 210093, China. ⁶Department of Physics, South University of Science and Technology of China, Shenzhen 518055, China. ⁷School of Physics and Institute for Superconducting and Electronic Materials, University of Wollongong, New South Wales 2522, Australia. *These authors contributed equally to this work. Correspondence and requests for materials should be addressed to F.W. (email: fwang@nju.edu.cn) or to F.X. (email: faxian@fudan.edu.cn) or to J.F.L. (email: lijianfeng@uestc.edu.cn).

Short-pulsed lasers have proved indispensable for many branches of science and engineering such as spectroscopy, biomedical research and telecommunications^{1,2}. The key component to achieve pulsed operation is a passive optical switch, also termed saturable absorber, which can transit between different absorption states on an ultrafast timescale³. Although an optical switch may take different physical forms, semiconductor saturable absorber mirrors (SESAMs), a breakthrough in ultrafast photonics in the early 1990s (ref. 4), are at present the most prevalent approach used for ultrashort pulse generation in the near-infrared. Compared with alternative technologies, a most compelling advantage of SESAMs is the ease with which device parameters can be precisely customized with great reproducibility⁵, thanks to the use of mature semiconductor growth techniques, for instance, molecular beam epitaxy (MBE). The design freedom of SESAMs has also opened a desirably large parameter space, enabling the access to robust pulsation regimes and continuous improvement of output characteristics for near-infrared ultrafast lasers³.

The development of compact short-pulsed lasers in the mid-infrared has historically been hindered by the poor availability of gain materials, thus expedient techniques based on near-infrared sources and nonlinear frequency conversion have become today's norm for mid-infrared pulse generation^{6–8}. The rapid maturing of mid-infrared gain platforms^{9–11} in recent years is calling for saturable absorbers with performance levels on par with their near-infrared counterparts. While being a powerful optical switching solution^{12–15}, SESAMs nevertheless exhibit a relatively narrow nonlinear optical bandwidth and limited long-wavelength access, that is, typically $\sim 3\ \mu\text{m}$ (ref. 16). Low-dimensional materials, including carbon nanotubes^{17,18}, graphene^{19–21}, transition-metal dichalcogenides²², black phosphorus^{23,24} and other emerging two-dimensional materials, have been considered for low-cost substitutes for SESAMs^{25,26}. However, the defect-prone exfoliation and transfer processes inevitably lead to poor repeatability and reliability and it has been challenging to tune the intrinsic nonlinear optical response in these material systems. Therefore, improving the performance levels of current mid-infrared short-pulsed lasers critically depends on the availability of a capable mid-infrared optical switch, preferably with figures of merit on par with those of SESAMs.

Cd_3As_2 , a representative three-dimensional topological Dirac semimetal (TDS), exhibits stable bulk Dirac states where conduction and valence bands touch at the Dirac nodes and the Dirac fermions disperse linearly along all three momentum directions^{27,28}. Interband transitions between the two Dirac bands in Cd_3As_2 naturally provides a highly robust and amenable light-Dirac fermion-interaction platform, ideally suited for enabling new optical functionalities in the mid-infrared range.

Here, by probing the mid-infrared optical response of bulk Dirac fermions, we show that MBE-grown Cd_3As_2 can act as an ultrafast ($< 10\ \text{ps}$) optical switch in the mid-infrared with operation covering at least the $3\text{--}6\ \mu\text{m}$ range. Through an element doping scheme (that is Cr atoms replacing Cd atoms in the compound), flexible tuning of the photocarrier recovery time over an order of magnitude is achieved. Furthermore, the robust parameter customization of Cd_3As_2 allows the access to different pulsation regimes in a $3\ \mu\text{m}$ fibre laser in an on-demand manner, pointing to the potential of greatly upgraded performance levels of mid-infrared pulsed lasers. Although various exotic physical phenomena, such as ultra-high mobility and giant negative magnetoresistance, have been uncovered in three-dimensional TDS systems^{29–32}, our findings show that this emerging class of quantum materials can be harnessed to fill a long known gap in the field of mid-infrared lasers and photonics.

Results

Cd_3As_2 film growth and characterization. We first prepared high-quality Cd_3As_2 films under ultra-high vacuum in MBE system (see Methods section). The thickness of the film was *in situ* monitored by reflection high-energy electron diffraction (RHEED). As shown in Fig. 1 inset, a typical RHEED pattern of Cd_3As_2 films shows bright and streaky lines, indicating a good surface morphology and crystallinity. X-ray diffraction measurements were also performed (Fig. 1). A series of peaks can be well resolved and indexed as $\{112\}$ crystal plane (the un-indexed peaks come from the mica substrate), further confirming the good crystallinity of the sample³³. Magneto-transport measurements on the Cd_3As_2 films were conducted using a physical property measurement system with a superconducting magnet (9 T). The Shubnikov–de Haas oscillations, non-trivial Berry phase and vanishingly small effective mass confirmed the Dirac nature of Cd_3As_2 thin film (see Supplementary Fig. 1). Hall measurements revealed an electron mobility of $\sim 3,300\ \text{cm}^2\ \text{V}^{-1}\ \text{s}^{-1}$ at room temperature and $5,400\ \text{cm}^2\ \text{V}^{-1}\ \text{s}^{-1}$ at low temperature (2.5 K).

Ultrafast nonlinear optical spectroscopy. Photoexcitation and carrier relaxation are fundamental processes that govern the optical response of materials. For Cd_3As_2 , an optical conductivity over broad mid-infrared wavelengths that is linked to the intrinsic Dirac band dispersion provides an important prerequisite for robust and tuneable light–matter interactions³⁴. To investigate the ultrafast optical switching characteristics of Cd_3As_2 , mid-infrared ultrafast pump-probe spectroscopy is performed (see Methods section). It should be noted that, while degenerate probing is known to better approximate saturable absorber dynamics³⁵, non-degenerate measurements offer the advantage of convenient scaling of probe wavelengths, owing to the ease of beam alignment ($\sim 6\ \mu\text{m}$ in our setup). Figure 2a and Supplementary Fig. 2a show the non-degenerate and degenerate transient transmission spectra, respectively (a $400\ \text{nm}$ thick Cd_3As_2 film is used to avoid quantum confinement effects). Both measurements reveal photobleaching signatures arising from Pauli blocking³⁶, indicating that Cd_3As_2 exhibits saturable absorption over the entire spectral range investigated ($1.6\text{--}6\ \mu\text{m}$). We further confirm this nonlinear optical response by a pump fluence-dependent change of $\Delta T/T_0$, as shown in Supplementary Fig. 3. A pure mica substrate is found to yield no transient response under the same conditions. Supplementary Fig. 2b illustrates the correlation between the non-degenerate and degenerate photocarrier processes, where τ_{nondeg} is seen to reproduce the value of τ_{deg} . We therefore attribute the fast

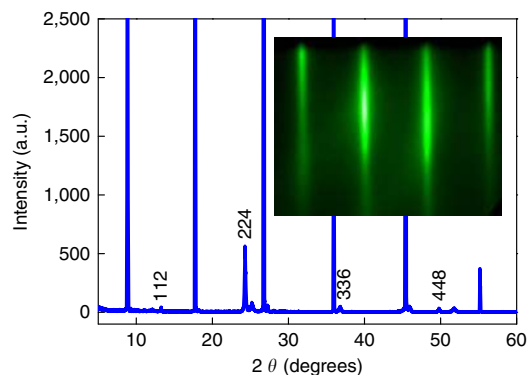


Figure 1 | Characterizations of Cd_3As_2 thin film. X-ray diffraction pattern for Cd_3As_2 thin film sample. The marked peaks correspond to $\{112\}$ crystal plane of Cd_3As_2 , while the other peaks come from the mica substrate. The inset is an *in situ* RHEED pattern.

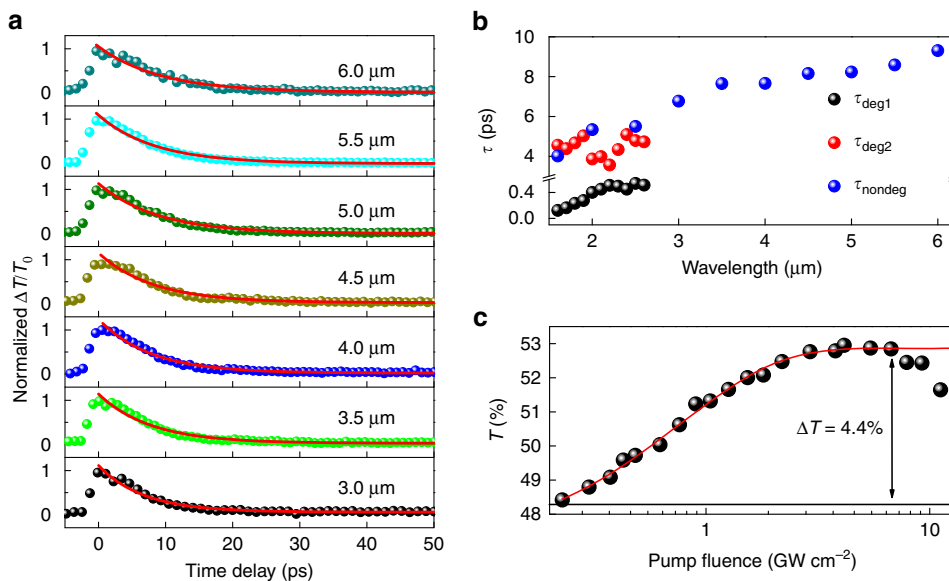


Figure 2 | Ultrafast nonlinear optical properties of Cd₃As₂ films with 400 nm thickness. (a) The non-degenerate ultrafast pump-probe results with the probe wavelength varying from 3 to 6 μm, and red solid lines correspond to a mono-exponential fit for τ_{nondeg} . (b) Fitted relaxation time constants τ versus probing wavelengths for both the degenerate (black and red points) and non-degenerate (blue points) measurements. (c) The nonlinear absorption at a wavelength of 3 μm (black points) and fitting with a simple saturation model (red line), $T(I) = 1 - \Delta T \times \exp(-I/I_{\text{sat}}) - T_{\text{ns}}$, where I , ΔT , I_{sat} and T_{ns} are the input intensity, modulation depth, saturation intensity and non-saturable absorbance, respectively. A modulation depth of 4.4% and a saturation intensity of $\sim 0.78 \text{ GW cm}^{-2}$ are obtained. The horizontal black line is the base line.

component τ_{deg1} to the coherent nonlinear optical response resulting from carrier–carrier scattering³⁷ and the slow component τ_{deg2} (τ_{nondeg}) to the incoherent response, typically associated with carrier–phonon coupling³⁸. In addition, we qualitatively investigate the relative weight of the two relaxation components by plotting the ratio of the slow component’s amplitude, defined as $\Delta T/T_0$ at 3 ps, to the fast component’s amplitude, defined as $\Delta T/T_0$ at 0 ps, as a function of probe wavelength. The increasing ratio shown in Supplementary Fig. 2c indicates that the slower, incoherent carrier processes have an increasingly dominant role as the excitation photon energy shifts closer to the Dirac node. Figure 2b summarizes all the fitted time constants for the pump-probe investigation, where τ_{nondeg} is seen to slow down from 4 to 9.3 ps as the probe wavelength was increased to $\sim 6 \mu\text{m}$. It should be noted that these time constants are appreciably longer than two-dimensional Dirac fermions in graphene. As theoretical investigations reveal that carrier–acoustic phonon scattering occurs on the microsecond timescale³⁹, it is reasonable to attribute the primary relaxation process to optical phonon coupling, and the increase of the recovery time can be accounted for by the reduced optical phonon energy in Cd₃As₂ ($\sim 15 \text{ meV}$) with respect to graphene (162–198 meV)^{36,40}. In brief, these experimental results unambiguously confirm that MBE-grown Cd₃As₂ thin films exhibit ultrafast saturable absorption over broad mid-infrared wavelengths from 3 to 6 μm.

To directly reveal the saturable absorption properties of Cd₃As₂, we further performed a nonlinear absorption measurement at a wavelength of 3 μm with an optical parametric amplifier (OPA) delivering $\sim 100 \text{ fs}$ pulses. Figure 2c shows the power-dependent transmittance of Cd₃As₂. A rollover typically seen in saturable absorbers at high intensity irradiation is observed at fluences exceeding 7 GW cm^{-2} and the sample is found substantially damaged at a fluence of $\sim 12 \text{ GW cm}^{-2}$ (ref. 41). The measurement data can be fitted by a simple saturation model⁴², $T(I) = 1 - \Delta T \times \exp(-I/I_{\text{sat}}) - T_{\text{ns}}$, where I , ΔT , I_{sat} and T_{ns} are the input intensity, modulation depth,

saturation intensity and non-saturable absorbance, respectively. This yields a modulation depth of $\sim 4.4\%$ and a saturation intensity of $\sim 0.78 \text{ GW cm}^{-2}$. At a wavelength of 2 μm, we obtain a modulation depth of $\sim 3.4\%$, a saturation intensity of $\sim 0.25 \text{ GW cm}^{-2}$ and a damage threshold of $\sim 10 \text{ GW cm}^{-2}$ with $\sim 100 \text{ fs}$ pulse irradiation (Supplementary Fig. 4a). Similar figures of merit were obtained by using a longer (6 ps) 2 μm pulses from a mode-locked fibre laser (Supplementary Fig. 4b).

Photocarrier recovery time customization. Flexible and precise parameter customization is the most important feature that differentiates SESAMs from other saturable absorber technologies and makes SESAMs adaptable to various laser formats, that is fibre, solid-state or semiconductor chip lasers^{3–5}. However, flexible parameter tuning has not been experimentally achieved for mid-infrared saturable absorbers. Among various device parameters, recovery time represents the most fundamental one. Other properties, such as modulation depth and saturation intensity, can typically be controlled by engineering either the recovery time or the device geometry⁵. It should be noted that, for saturable absorber operation, the slow recovery component typically has a more dominant role than the fast component, especially during the initial pulse formation stage³. Therefore, various strategies targeting the tuning of the slow component of the relaxation time of SESAMs have been proposed^{43–45}, of which low-temperature growth⁴⁴ and postgrowth ion-implantation⁴⁵ have proven most effective. Here we introduce chromium (Cr) as a dopant to the Cd₃As₂ film (see Methods section). Compared with low-temperature growth and ion-implantation, one potential advantage of using the Cr doping approach is significantly reduced defects in the sample lattices. In Supplementary Fig. 5, Supplementary Fig. 6 and Supplementary Note 1, we show that the Cr atoms occupy specific (f1) positions instead of distributing randomly (Supplementary Tables 1 and 2), which subsequently leads to the opening of a quasi-particle gap ($\sim 50 \text{ meV}$ for the 2% Cr-doped sample)^{46,47}. The optical conductivity of Cr-doped

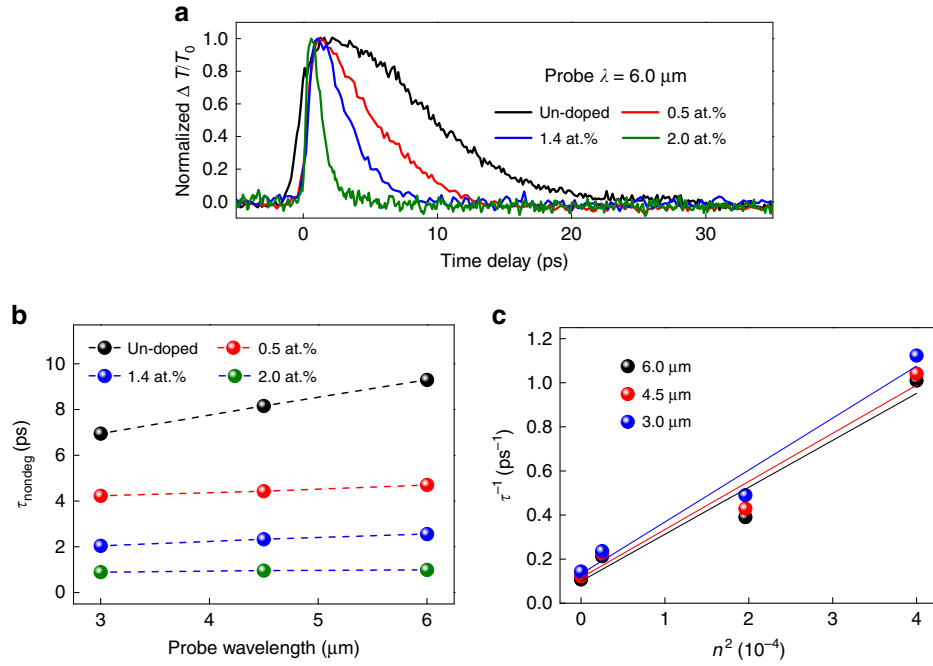


Figure 3 | Relaxation time customization by element doping. (a) Time-resolved $\Delta T/T_0$ traces at a probe wavelength of $6.0 \mu\text{m}$ for the Cd_3As_2 samples with different Cr concentrations, showing faster photocarrier relaxation times for higher Cr concentrations. (b) The fitted recovery time constants as a function of Cr concentration at probe wavelengths of 3.0 , 4.5 and $6.0 \mu\text{m}$. The data points obtained from the same sample are connected by dashed lines to guide the eye. (c) Linear relationship between the inverse relaxation time τ^{-1} and the square of the doping concentration n^2 . The lines (linear fitting) reveal that the scattering rate agrees with the equation $\tau_i^{-1}(\text{total}) = \tau_i^{-1}(0) + D\Delta^2$, where Δ is the doping-induced band gap and $\tau_i^{-1}(0)$ and D are constants that are independent of the band gap.

Cd_3As_2 was also calculated (see Supplementary Note 2). As shown in Supplementary Fig. 7, the linear optical absorption is not sensitively dependent on Cr doping for the photon energies of interest. However, the gap opening is expected to lead to strong impact on the photocarrier relaxation dynamics⁴⁸. Figure 3a presents the non-degenerate pump-probe results at $6 \mu\text{m}$ for Cd_2As_3 films with different Cr concentrations (up to 2 at.%). The photocarrier recovery times of Cr-doped Cd_3As_2 become appreciably faster at higher Cr concentrations for all wavelengths within $3\text{--}6 \mu\text{m}$ (Supplementary Fig. 8). The time constants as a function of Cr concentration are summarized in Fig. 3b. Without any particular optimization, a relaxation time tuning across an order of magnitude (for example, from 8 ps to 800 fs at $\sim 4.5 \mu\text{m}$) is already achieved, which opens up the long sought-after parameter space for mid-infrared optical switches.

To elaborate the physical mechanisms for the observed relaxation time tuning, we analysed the relaxation dynamics by considering Fermi's golden rule and the Boltzmann equation. It is assumed that the Cr doping opens a gap at the Dirac point, and the gap size is directly proportional to the dopant concentration in the lowest-order coupling⁴⁹. The eigenvector of the current system is shown in Supplementary Note 2. Based on Fermi's golden rule, the carrier relaxation rate (inverse relaxation time) from the initial state $|\mathbf{k}, s\rangle$ to the final state $|\mathbf{k} + \mathbf{q}, s'\rangle$ is given by^{39,50–53},

$$W_{fi} = \frac{2\pi}{\hbar} \sum \left\{ |M_-|^2 [n_{\text{ph}}(\omega_{\mathbf{q}}) + 1] \delta(E_s(\mathbf{k} + \mathbf{q}) - E_s(\mathbf{k}) - \omega_{\mathbf{q}}) + n_{\text{ph}}(\omega_{\mathbf{q}}) + |M_+|^2 n_{\text{ph}}(\omega_{\mathbf{q}}) \delta(E_s(\mathbf{k} - \mathbf{q}) - E_s(\mathbf{k}) + \omega_{\mathbf{q}}) \right\}. \quad (1)$$

where n_{ph} is the phonon distribution function, $\omega_{\mathbf{q}}$ is the phonon energy and M_{\pm} is the electron–phonon interaction matrix element for emitting and absorbing one phonon. The Boltzmann equation for the electron distribution function, $f_{\mathbf{k}}^s$,

can be written as,

$$\frac{\partial f_{\mathbf{k}}^s}{\partial t} = - \sum_{\mathbf{k}', s'} \left[f_{\mathbf{k}}^s (1 - f_{\mathbf{k}'}^{s'}) W_{s, s'}(\mathbf{k}, \mathbf{k}') - f_{\mathbf{k}'}^{s'} (1 - f_{\mathbf{k}}^s) W_{s, s}(\mathbf{k}', \mathbf{k}) \right]. \quad (2)$$

From this equation, the energy loss rate P can be calculated⁵³, and the relaxation time is given by, $\tau_t = E/P$. The dependence of the relaxation time on the doping concentration can be qualitatively analysed as follows. The interaction matrix element is given as,

$$M = \langle \phi_{\tau, s}(\mathbf{k}) | H_{\text{int}} | \phi_{\tau', s'}(\mathbf{k} + \mathbf{q}) \rangle. \quad (3)$$

For phonon-mediated carrier relaxation, only two processes contribute to the transition, intranode/interband (11, 11) scattering and internode/interband (11, -11) scattering. The second contribution vanishes in pure Dirac system where the phonon scattering between states from the different nodes are forbidden⁵⁴. However, in the present system, where Cr doping induces a band gap opening, both scattering terms contribute. The scattering matrix elements now include (using the eigenvectors shown in Supplementary Note 2),

$$M(11, 11) = C(\mathbf{q}) \frac{(E_{\mathbf{k}}^+ + M_z k_z)(E_{\mathbf{k}+\mathbf{q}}^+ + M_z(k_z + q_z) + A^2 k_- (k_+ q_+)) + \Delta^2}{\sqrt{4E_{\mathbf{k}}^+ E_{\mathbf{k}+\mathbf{q}}^+ (E_{\mathbf{k}}^+ + M_z k_z)(E_{\mathbf{k}+\mathbf{q}}^+ + M_z(k_z + q_z))}}. \quad (4)$$

$$M(11, -11) = C(\mathbf{q}) \frac{Aq - \Delta}{\sqrt{4E_{\mathbf{k}}^+ E_{\mathbf{k}+\mathbf{q}}^+ (E_{\mathbf{k}}^+ + M_z k_z)(E_{\mathbf{k}+\mathbf{q}}^+ + M_z(k_z + q_z))}}. \quad (5)$$

where $k_{\pm} = k_x \pm ik_y$ and $E_{\pm} = \pm \sqrt{M_z^2 k_z^2 + A^2 k_{\parallel}^2 + \Delta^2}$. It should be noted that $C(\mathbf{q})$ depends on the details of electron–phonon interaction, the deformation parameter, electron effective mass and the phonon frequency but is independent of the band gap. Now the scattering rate (inverse scattering time) is the sum of the rate owing to each scattering channels,

$\tau_t^{-1}(\text{total}) = \tau_t^{-1}(\text{intranode}) + \tau_t^{-1}(\text{internode})$. The leading correction in both $|M(11,11)|^2$ and $|M(11,-11)|^2$ is proportional to Δ^2 if higher-order terms are ignored. It is given in the form

$$\tau_t^{-1}(\text{total}) = \tau_t^{-1}(0) + D\Delta^2. \quad (6)$$

The change of the relaxation rate owing to the gap opening is thus $\delta\tau_t^{-1}(\Delta) = D\Delta^2$. Although both $\tau_t^{-1}(0)$ and D need to be calculated numerically, the fact that the relaxation rate increases with the band gap size always holds. This band gap dependence has been confirmed in our numerical simulation. To investigate whether our experimental results agree with the above numerical analysis, we plot the experimental inverse relaxation time as a function of the square of the doping concentration n^2 in Fig. 3c. Rather good agreement with the theoretical prediction is obtained. From these results, it is reasonable to assign the observed faster relaxation time (at higher Cr concentrations) to additional doping-induced scattering channels as well as the enhancement of intranode scattering, arising from the alteration of the band structure near the Dirac point.

On-demand pulsed operation in a mid-infrared laser. To illustrate the benefits of an enlarged parameter space, we demonstrated on-demand access to different pulsation regimes in a home-built 3 μm fluoride fibre laser using Cd_3As_2 films with different relaxation times. We chose to employ a fibre laser test bed because it is readily available in our laboratory; the

demonstration may be performed on other mid-infrared laser types, such as an extracavity semiconductor laser. Figure 4a shows the pulsed laser setup (see Methods section for details). First, the un-doped Cd_3As_2 film with relatively long time constant (~ 7 ps at a wavelength of $\sim 3 \mu\text{m}$) was used. When the pump power reached 58 mW, continuous wave (CW) emission turned into Q-switched mode-locking envelope as shown in Fig. 4b. With further increasing pump power, both the duration and period of the Q-switched envelope decreased as expected for Q-switching operation⁵⁵. The Q-switched mode-locking state changed swiftly into CW mode-locking at a pump power of 80 mW and could be maintained up to a pump power of 290 mW as shown in Fig. 4c. The pulse period of 70 ns matched well with the calculated cavity round trip time. The optical spectrum of the mode-locked pulses is shown in Fig. 4d. A centre wavelength of 2,860 nm and a full-width half-maximum of 6.2 nm were achieved. Furthermore, the radio-frequency spectra of the pulses were also measured, confirming robust and stable mode-locking operation (Fig. 4e). The pulse duration was measured by a home-built mid-infrared autocorrelator and a pulse width of 6.3 ps was inferred (Fig. 4f). It is clear that stable mode-locking is achieved with the un-doped sample. Then the Cr-doped Cd_3As_2 films with shorter relaxation times were introduced into the cavity in turn. It was found that the threshold to achieve CW mode-locking increased with shortening relaxation time of the Cd_2As_3 , as higher intensities are now required to saturate the conduction band⁵. More specifically, in the case where the Cd_2As_3 film with the relaxation time of 0.5 ps (2% Cr doping concentration) was used

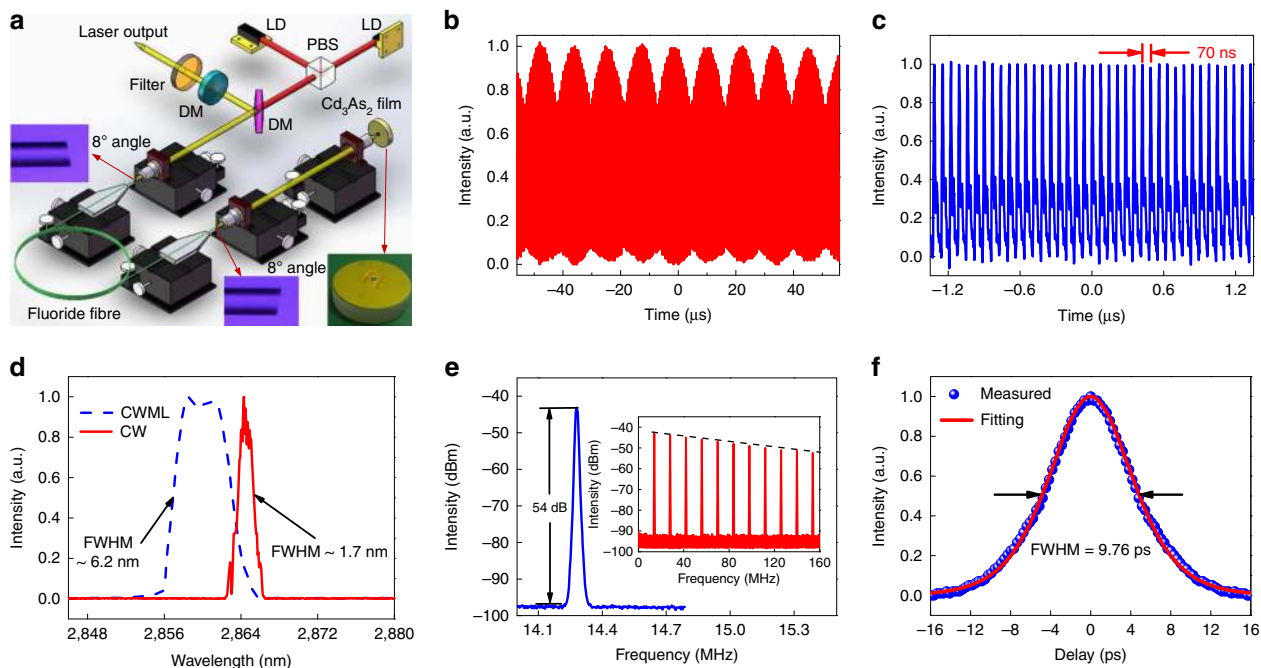


Figure 4 | Ultrafast mid-infrared fibre laser based on Cd_3As_2 saturable absorber. (a) Schematic of the fibre laser setup, where LD, PBS and DM are diode laser, polarized beam splitter and dichroic mirror, respectively. (b) Q-switched mode-locked pulses at a pump power of 57.6 mW. (c) CW mode-locked (CWML) pulses at a pump power of 286.9 mW. There is no discernible envelope modulation, indicating stable operation. (d) Output optical spectrum. It is observed that the centre wavelength of CW operation (by moving the focussed beam onto a spot of the gold mirror clear of the Cd_3As_2 sample) was red-shifted to 2864.3 nm, as the decreased intracavity loss led to a lower initial Stark manifold of the $5J_6$ energy level. Meanwhile, the full-width at half-maximum (FWHM) was decreased to 1.7 nm as a result of fewer required spectral Fourier components. (e) Radio-frequency (RF) spectrum at a scanning span of 0.8 MHz with a resolution bandwidth of 10 kHz. The repetition rate and signal-to-noise ratio were 14.28 MHz and 54 dB, respectively. The inset shows the RF spectrum with a broader scanning range from 0 to 160 MHz. The smooth roll-off of the clean harmonic frequency components indicated that no Q-switched modulation and multiple pulsing were presented in this operation regime. (f) Autocorrelation trace measured with an intensity autocorrelator. The blue points are the experimental results and the red line is the fitting result using a Sech^2 function. The FWHM of the autocorrelation trace is 9.8 ps, corresponding to a pulse duration of 6.3 ps (a deconvolution factor of 1.54 is used to account for the Sech^2 pulse shape). For b-d,f, the intensities are normalized by the maximum value of measured physical quantities.

only the Q-switched pulsation regime was accessible as shown in Supplementary Fig. 9. The simple adjustment of the mid-infrared optical switch is expected to greatly facilitate more thorough studies of pulsation regimes of various mid-infrared lasers. It should be noted that, although the technical characteristics of the demonstrated mode-locked laser are similar to those enabled by SESAMs or low-dimensional materials (such as graphene and black phosphorus)^{56–60}, Cd₃As₂ possesses advantages in terms of scaling to longer mid-infrared wavelength as well as flexibility in customizing the relaxation time.

Discussion

It is worth pointing out that the high level of parameter customization of Cd₃As₂ has broad implications. For example, quantum cascade lasers (QCLs) provide an excellent gain platform in the mid-infrared range^{11,61–63}. However, up until now, robust mode locking of QCLs is only achievable through active mode locking techniques^{64–67}. Our findings make it possible to verify whether mid-infrared QCLs might be passively mode-locked, a subject that can only be fully investigated with a flexibly configurable optical switch.

In conclusion, we have demonstrated a highly robust and tuneable mid-infrared optical switch based on the emerging three-dimensional Dirac semimetal Cd₃As₂. Owing to the strong light-matter interaction of bulk Dirac fermions and the compatibility with MBE growth, the use of Cd₃As₂ ensures synthesis scalability, broadband operation and flexible parameter control. These features effectively make the Cd₃As₂-based approach a capable mid-infrared counterpart to the highly adaptable near-infrared SESAMs. Our work represents a step forward in the development of compact mid-infrared ultrafast sources for advanced sensing, communication, spectroscopy and medical diagnostics. It may be further extended to active photonic devices, including optical modulators and light-emitting devices, working in the mid- to far-infrared range.

Methods

Cd₃As₂ film growth. A series of Cd₃As₂ thin films were grown in a CREATEC MBE system with base pressure $<2 \times 10^{10}$ mbar. The substrates were degassed at 350 °C for 30 min to remove any molecule that was absorbed on the mica substrates prior to the growth. The Cd₃As₂ thin film deposition was carried out by co-evaporating high-purity Cd (99.999%) and As (99.999%) from dual-filament and valve-cracker effusion cells, respectively. The beam flux ratio of Cd to As was fixed around 3, and the growth process was *in situ* monitored by RHEED. For Cr doping, another cell with Cr (99.999%) was used for co-evaporation and the doping concentration was precisely controlled by adjusting the cell temperature, and the doping concentration is calibrated by energy-dispersion X-ray spectroscopy inside a scanning electron microscope.

Pump-probe measurement. Both the degenerate and the non-degenerate pump-probe setup is based on an 800 nm, 1 kHz Ti: Sapphire amplifier system (Libra, Coherent Inc.). For the non-degenerate pump-probe experiment, a portion of the laser output energy with a wavelength of 800 nm is used to excite photo-carriers in the sample, and the remaining part is fed into an optical parametric amplifier (OPA-SOLO, Coherent Inc.) to generate probe beam with wavelengths from 1.6 to 6 μm . For the degenerate pump-probe measurement, the idler beam (1.6–2.6 μm) of the OPA is split into pump and probe. Both pump and probe pulses have durations of ~ 100 fs. For all the measurements, the used pump fluence is about $300 \mu\text{J cm}^{-2}$, except for the pump fluence-dependent measurement. In addition, the pump fluence is 20 times larger than the probe fluence. The pump-induced change of probe is detected using a lithium tantalate pyroelectric detector (DET-L-PYC5-R-P, Newport) photodetector and a lock-in amplifier referenced to a 500 Hz chopped pump.

Nonlinear absorption measurement. The 2 and 3 μm femtosecond pulses (~ 100 fs) were generated by the same OPA system used in the pump-probe measurements, and picosecond pulses (~ 6 ps) were obtained from a mode-locked thulium fiber laser (NPI Lasers, Inc.) operating at 1,950 nm with 32 MHz repetition.

3 μm fibre laser setup. The pulsed fibre laser setup is described in Fig. 4a. Two commercially available diode lasers (Eagleyard Photonics, Berlin) centred at $\sim 1,150$ nm were employed to pump the gain fibre after polarization multiplexing via a polarized beam splitter (PBS) and then focussed by an antireflection-coated (for ~ 1150 nm) ZnSe objective lens (Innovation Photonics, LFO-5-6-3 μm , 0.25 NA) with a 6.0 mm focal length. Note that this objective lens also acts as the collimator of the light out-coupled from the fibre core. A dichroic mirror with $\sim 96\%$ transmittance at 1150 nm and 95% reflectance at $\sim 3 \mu\text{m}$ was placed between the PBS and ZnSe objective lens at an angle of 45° with respect to the pump beam to direct the laser. Another specifically designed dichroic mirror with 80% reflection at $\sim 3 \mu\text{m}$ was used to act as output coupler. A 3 μm filter with a full-width half-maximum of 500 nm was used to block the residual pump. The gain fibre (Fiberlabs, Japan) was a piece of commercial double-cladding Ho³⁺/Pr³⁺ co-doped fluoride fibre. It has an octagonal pump core with a diameter of 125 μm and NA of 0.5 and a circular core with a diameter of 10 μm and NA of 0.2. The concentration of the Ho³⁺ and Pr³⁺ were 30,000 and 2,500 p.p.m., respectively, thus the selected fibre length of 6.8 m provided $>90\%$ pump absorption efficiency. Both ends of the fibre were cleaved at an angle of 8° to avoid parasitic lasing in the cavity. First, the laser from the angle-cleaved fibre end far from the pump source was collimated employing a ZnSe objective lens with a specifically designed coating (Innovation Photonics, LFO-5-12-3 μm , 0.13 NA) with a focal length of 12 mm ($>95\%$ transmission at 3 μm , and $<10\%$ transmission at 1150 nm). Then the collimated light was focussed with a second identical ZnSe objective lens onto the terminated feedback assembled by pasting the Cd₂As₃ films on a commercial gold-protected mirror (Thorlabs), as shown in the inset of Fig. 4a. Here the terminator was mounted onto a high-precision six-dimension adjuster to perform position optimization.

Data availability. All important data supporting the findings of this study are included in this published article (and its Supplementary Information files). Further data sets are available from the corresponding author on reasonable request.

References

- Jackson, S. D. Towards high-power mid-infrared emission from a fibre laser. *Nat. Photonics* **6**, 423–431 (2012).
- Schliesser, A., Picqué, N. & Hänsch, T. Mid-infrared frequency combs. *Nat. Photonics* **6**, 440–449 (2012).
- Keller, U. Recent developments in compact ultrafast lasers. *Nature* **424**, 831–838 (2003).
- Keller, U. *et al.* Solid-state low-loss intracavity saturable absorber for Nd:YLF lasers: an antiresonant semiconductor Fabry-Perot saturable absorber. *Opt. Lett.* **17**, 505–507 (1992).
- Keller, U. *et al.* Semiconductor saturable absorber mirrors (SESAMs) for femtosecond to nanosecond pulse generation in solid-state lasers. *IEEE J. Sel. Top. Quantum Electron.* **2**, 435–453 (1996).
- Fischer, C. & Sigrist, M. W. Mid-IR difference frequency generation. *Top. Appl. Phys.* **89**, 97–140 (2003).
- Foreman, S. M., Jones, D. J. & Ye, J. Flexible and rapidly configurable femtosecond pulse generation in the mid-IR. *Opt. Lett.* **28**, 370–372 (2003).
- Erny, C. *et al.* Mid-infrared difference-frequency generation of ultrashort pulses tunable between 3.2 and 4.8 μm from a compact fiber source. *Opt. Lett.* **32**, 1138–1140 (2007).
- Sorokina, I. T. Crystalline mid-infrared lasers. *Top. Appl. Phys.* **89**, 255–349 (2003).
- Mirov, S. B. *et al.* Progress in mid-IR Cr²⁺ and Fe²⁺ doped II–VI materials and lasers [Invited]. *Opt. Mater. Express* **1**, 898–910 (2011).
- Hofstetter, D. & Faist, J. High performance quantum cascade lasers and their applications. *Top. Appl. Phys.* **89**, 61–96 (2003).
- Quarterman, A. H. *et al.* A passively mode-locked external-cavity semiconductor laser emitting 60-fs pulses. *Nat. Photonics* **3**, 729–731 (2009).
- Sorokin, E., Sorokina, I. T., Mandon, J., Guelachvili, G. & Picqué, N. Sensitive multiplex spectroscopy in the molecular fingerprint 2.4 μm with a Cr²⁺:ZnSe femtosecond laser. *Opt. Express* **15**, 16540–16545 (2007).
- Bernhardt, B. *et al.* Mid-infrared dual-comb spectroscopy with 2.4 μm Cr²⁺:ZnSe femtosecond lasers. *Appl. Phys. B* **100**, 3–8 (2010).
- Li, J. *et al.* Mid-infrared passively switched pulsed dual wavelength Ho³⁺-doped fluoride fiber laser at 3 μm and 2 μm . *Sci. Rep.* **5**, 10770 (2015).
- BATOP GmbH company, SAM product list <http://www.batop.de/products/saturable-absorber/saturable-absorber-mirror/saturable-absorber-mirror.html>.
- Set, S. Y., Yaguchi, H., Tanaka, Y. & Jablonski, M. Laser mode locking using a saturable absorber incorporating carbon nanotubes. *J. Lightwave Technol.* **22**, 51–56 (2004).
- Wang, F. *et al.* Wideband-tuneable, nanotube mode-locked, fibre laser. *Nat. Nanotechnol.* **3**, 738–742 (2008).
- Bao, Q. L. *et al.* Atomic-Layer Graphene as a saturable absorber for ultrafast pulsed lasers. *Adv. Funct. Mater.* **19**, 3077–3083 (2009).

20. Hasan, T. *et al.* Nanotube polymer composites for ultrafast photonics. *Adv. Mater.* **21**, 3874–3899 (2009).
21. Sun, Z. *et al.* Graphene mode-locked ultrafast laser. *ACS Nano* **4**, 803–810 (2010).
22. Wang, K. P. *et al.* Ultrafast saturable absorption of two-dimensional MoS₂ nanosheets. *ACS Nano* **7**, 9260–9267 (2013).
23. Lu, S. B. *et al.* Broadband nonlinear optical response in multilayer black phosphorus: an emerging infrared and mid-infrared optical material. *Opt. Express* **23**, 11183–11194 (2015).
24. Sotor, J. *et al.* Ultrafast thulium-doped fiber laser mode locked with black phosphorus. *Opt. Lett.* **40**, 3885–3888 (2015).
25. Martinez, A. & Sun, Z. Nanotube and graphene saturable absorbers for fibre lasers. *Nat. Photonics* **7**, 842–845 (2013).
26. Sun, Z., Martinez, A. & Wang, F. Optical modulators with 2D layered materials. *Nat. Photonics* **10**, 227–238 (2016).
27. Liu, Z. K. *et al.* A stable three-dimensional topological Dirac semimetal Cd₃As₂. *Nat. Mater.* **13**, 677–681 (2014).
28. Neupane, M. *et al.* Observation of a three-dimensional topological Dirac semimetal phase in high-mobility Cd₃As₂. *Nat. Commun.* **5**, 3786 (2014).
29. Cao, J. *et al.* Landau level splitting in Cd₃As₂ under high magnetic fields. *Nat. Commun.* **6**, 7779 (2015).
30. Liang, T. *et al.* Ultrahigh mobility and giant magnetoresistance in the Dirac semimetal Cd₃As₂. *Nat. Mater.* **14**, 280–284 (2015).
31. Li, C. Z. *et al.* Giant negative magnetoresistance induced by the chiral anomaly in individual Cd₃As₂ nanowires. *Nat. Commun.* **6**, 10137 (2015).
32. Aggarwal, L. *et al.* Unconventional superconductivity at mesoscopic point contacts on the 3D Dirac semimetal Cd₃As₂. *Nat. Mater.* **15**, 32–37 (2016).
33. Liu, Y. *et al.* Gate-tunable quantum oscillations in ambipolar Cd₃As₂ thin films. *NPG Asia Mater.* **7**, e221 (2015).
34. Neubauer, D. *et al.* Interband optical conductivity of [001]-oriented Dirac semimetal Cd₃As₂. *Phys. Rev. B* **93**, 121202(R) (2016).
35. Xu, S. *et al.* Ultrafast nonlinear photoresponse of single-wall carbon nanotubes: a broadband degenerate investigation. *Nanoscale* **8**, 9304–9309 (2016).
36. Weber, C. P. *et al.* Transient reflectance of photoexcited Cd₃As₂. *Appl. Phys. Lett.* **106**, 231904 (2015).
37. Li, T. *et al.* Femtosecond population inversion and stimulated emission of dense Dirac fermions in graphene. *Phys. Rev. Lett.* **108**, 167401 (2012).
38. Lu, W. *et al.* Ultrafast relaxation dynamics of photo-excited Dirac fermion in three dimensional Dirac semimetal cadmium arsenide. Preprint at <http://arxiv.org/abs/1608.07361> (2016).
39. Lundgren, R. & Fiete, G. A. Electronic cooling in Weyl and Dirac semimetals. *Phys. Rev. B* **92**, 125139 (2015).
40. Maultzsch, J., Reich, S., Thomsen, C., Requierdt, H. & Ordejón, P. Phonon dispersion in graphite. *Phys. Rev. Lett.* **92**, 075501 (2004).
41. Saraceno, C. J. *et al.* SESAMs for high-power oscillators: design guidelines and damage thresholds. *IEEE J. Sel. Top. Quantum Electron.* **18**, 29–41 (2012).
42. Chen, Y. *et al.* Large energy, wavelength widely tunable, topological insulator Q-switched erbium-doped fiber laser. *IEEE J. Sel. Top. Quantum Electron.* **20**, 0900508 (2014).
43. Rutz *et al.* Parameter tunable GaInNAs saturable absorbers for mode locking of solid-state lasers. *J. Cryst. Growth* **301–302**, 570–574 (2007).
44. Haiml, M. *et al.* Optical nonlinearity in low-temperature-grown GaAs: microscopic limitations and optimization strategies. *Appl. Phys. Lett.* **74**, 3134–3136 (1999).
45. Delpon, E. L. *et al.* Ultrafast excitonic saturable absorption in ion-implanted InGaAs/InAlAs multiple quantum wells. *Appl. Phys. Lett.* **72**, 759–761 (1998).
46. Yuan, X. *et al.* Direct observation of Landau level resonance and mass generation in Dirac semimetal Cd₃As₂ thin films. Preprint at <http://arxiv.org/abs/1601.02316> (2016).
47. Jin, H. *et al.* The electronic and magnetic properties of transition-metal element doped three-dimensional topological Dirac semimetal in Cd₃As₂. *J. Mater. Chem. C* **3**, 3547–3551 (2015).
48. Haug, H. & Koch, S. W. *Quantum Theory of the Optical and Electronic Properties of Semiconductors*. 5th edn (World Scientific, 2009).
49. Sato, T. *et al.* Unexpected mass acquisition of Dirac fermions at the quantum phase transition of a topological insulator. *Nat. Phys.* **7**, 840–844 (2011).
50. Xu, W. & Zhang, C. Resonant absorption of terahertz electromagnetic waves by heated electrons in AlGaAs/GaAs heterostructures. *Appl. Phys. Lett.* **68**, 3305 (1996).
51. Xu, W. & Zhang, C. Magneto-photon-phonon resonances in two-dimensional semiconductor systems driven by terahertz electromagnetic fields. *Phys. Rev. B* **54**, 4907 (1996).
52. Xu, W. & Zhang, C. Enhancement of terahertz acoustic-phonon generation by the magnetic field applied parallel to a two-dimensional semiconductor system. *Appl. Phys. Lett.* **68**, 823 (1996).
53. Sergeev, A., Reizer, Y. M. & Mitin, V. Deformation electron-phonon coupling in disordered semiconductors and nanostructures. *Phys. Rev. Lett.* **94**, 136602 (2005).
54. Wehling, T. O., Black-Schaffer, A. M. & Balatsky, A. V. Dirac materials. *Adv. Phys.* **63**, 1–76 (2014).
55. Li, J., Hudson, D. D., Liu, Y. & Jackson, S. D. Efficient 2.87 μm fiber laser passively switched using a semiconductor saturable absorber mirror. *Opt. Lett.* **37**, 3747–3749 (2012).
56. Hu, T., Hudson, D. D. & Jackson, S. D. Stable, self-starting, passively flexibly control fiber ring laser of the 3 μm class. *Opt. Lett.* **39**, 2133–2136 (2014).
57. Haboucha, A. *et al.* Fiber Bragg grating stabilization of a passively mode-locked 2.8 μm Er³⁺: fluoride glass fiber laser. *Opt. Lett.* **39**, 3294–3297 (2014).
58. Tang, P. *et al.* Watt-level passively mode-locked Er³⁺-doped ZBLAN fiber laser at 2.8 μm. *Opt. Lett.* **40**, 4855–4858 (2015).
59. Zhu, G. *et al.* Graphene mode-locked fiber laser at 2.8 μm. *IEEE Photonics Technol. Lett.* **28**, 7–10 (2016).
60. Qin, Z. P. *et al.* Mid-infrared mode-locked pulse generation with multilayer black phosphorus as saturable absorber. *Opt. Lett.* **41**, 56–58 (2016).
61. Faist, J. *et al.* Quantum cascade laser. *Science* **264**, 553–556 (1994).
62. Liu, P. Q. *et al.* Highly power-efficient quantum cascade lasers. *Nat. Photonics* **4**, 95–98 (2010).
63. Yao, Y., Hoffman, A. J. & Gmachl, C. F. Mid-infrared quantum cascade lasers. *Nat. Photonics* **6**, 432–439 (2012).
64. Wang, C. Y. *et al.* Mode-locked pulses from mid-infrared quantum cascade lasers. *Opt. Express* **17**, 12929–12943 (2009).
65. Barbieri, S. *et al.* Coherent sampling of active mode-locked terahertz quantum cascade lasers and frequency synthesis. *Nat. Photonics* **5**, 306 (2011).
66. Wang, Y. & Belyanin, A. Active mode-locking of mid-infrared quantum cascade lasers with short gain recovery time. *Opt. Express* **23**, 4173–4185 (2015).
67. Revin, D. G., Hemingway, M., Wang, Y., Cockburn, J. W. & Belyanin, A. Active mode locking of quantum cascade lasers operating in external ring cavity. *Nat. Commun.* **7**, 11440 (2016).

Acknowledgements

This work was supported in part by the National Basic Research Program of China (2013CB932900, 2014CB921101, 2011CB301900); National Natural Science Foundation of China (61378025, 61427812, 61274102, 61504056, 61322407, 11474058, 61377042, 61435003, 61322407, 11474058, 61674040); National Young 1,000 Talent Plan; A 'Jiangsu Shuangchuang Team' Program; State Key Laboratory of Advanced Optical Communication Systems Networks, China; Program for New Century Excellent Talents in University of Ministry of Education of China (NCET-13-0094); and Jiangsu NSF (BK20140054).

Author contributions

F.W., F.X. and J.F.L. conceived the project and, together with Y.S. and R.Z., supervised the project. X.Y. and F.X. prepared the Cd₃As₂ samples and performed transport characterizations. C.H.Z., Y.M. and X.L. performed ultrafast pump-probe experiments. L.H. and Y.X. contributed to the analysis of the transport data. H.L., Y.W. and J.F.L. carried out the pulsed mid-infrared fiber laser experiment. J.L. and C.Z. contributed to the theoretical analysis of relaxation dynamics and the numerical calculation of optical conductivities of the samples. F.W., F.X., J.F.L. and S.Z. co-wrote the paper with all authors contributing to discussion and preparation of the manuscript.

Additional information

Supplementary Information accompanies this paper at <http://www.nature.com/naturecommunications>

Competing financial interests: F.W., C.H.Z., Y.M., Y.X., R.Z., and S.Z. have filed a Chinese patent based on this work (application no. 201610019501.3).

Reprints and permission information is available online at <http://ngp.nature.com/reprintsandpermissions/>

How to cite this article: Zhu, C. *et al.* A robust and tuneable mid-infrared optical switch enabled by bulk Dirac fermions. *Nat. Commun.* **8**, 14111 doi: 10.1038/ncomms14111 (2017).

Publisher's note: Springer Nature remains neutral with regard to jurisdictional claims in published maps and institutional affiliations.



This work is licensed under a Creative Commons Attribution 4.0 International License. The images or other third party material in this article are included in the article's Creative Commons license, unless indicated otherwise in the credit line; if the material is not included under the Creative Commons license, users will need to obtain permission from the license holder to reproduce the material. To view a copy of this license, visit <http://creativecommons.org/licenses/by/4.0/>

Reproduced with permission of the copyright owner. Further reproduction prohibited without permission.