

# A *Spitzer* Survey for Dust in Type II<sub>n</sub> Supernovae

Ori D. Fox<sup>1</sup>, Roger A. Chevalier<sup>2</sup>, Michael F. Skrutskie<sup>2</sup>, Alicia M. Soderberg<sup>3</sup>, Alexei V. Filippenko<sup>4</sup>, Mohan Ganeshalingam<sup>4</sup>, Jeffrey M. Silverman<sup>4</sup>, Nathan Smith<sup>4,5</sup>, and Thea N. Steele<sup>4</sup>

ori.d.fox@nasa.gov

## ABSTRACT

Recent observations suggest that Type II<sub>n</sub> supernovae (SNe II<sub>n</sub>) may exhibit late-time (>100 days) infrared (IR) emission from warm dust more than other types of core-collapse SNe. Mid-IR observations, which span the peak of the thermal spectral energy distribution, provide useful constraints on the properties of the dust and, ultimately, the circumstellar environment, explosion mechanism, and progenitor system. Due to the low Type II<sub>n</sub> rate (<10% of all core-collapse SNe), few IR observations exist for this subclass. The handful of isolated studies, however, show late-time IR emission from warm dust that, in some cases, extends for five or six years post-discovery. While previous *Spitzer*/IRAC surveys have searched for dust in SNe, none have targeted the Type II<sub>n</sub> subclass. This article presents results from a warm *Spitzer*/IRAC survey of the positions of all 68 known SNe II<sub>n</sub> within a distance of 250 Mpc between 1999 and 2008 that have remained unobserved by *Spitzer* more than 100 days post-discovery. The detection of late-time emission from ten targets (~15%) nearly doubles the database of existing mid-IR observations of SNe II<sub>n</sub>. Although optical spectra show evidence for new dust formation in some cases, the data show that in most cases the likely origin of the mid-IR emission is pre-existing dust, which is continuously heated by optical emission generated by ongoing circumstellar interaction between the forward shock and circumstellar medium. Furthermore, an emerging trend suggests these SNe “turn off” at ~1000–2000 days post-discovery once the forward shock overruns the dust shell. The mass-loss rates associated with these

---

<sup>1</sup>NASA Goddard Space Flight Center, Greenbelt, MD 20771

<sup>2</sup>Department of Astronomy, University of Virginia, Charlottesville, VA 22903

<sup>3</sup>Harvard-Smithsonian Center for Astrophysics, Cambridge, MA 02138

<sup>4</sup>Department of Astronomy, University of California, Berkeley, CA 94720-3411

<sup>5</sup>Department of Astronomy/Steward Observatory, Tucson, AZ 85721

dust shells are consistent with luminous blue variable (LBV) progenitors having similar mass-loss histories.

*Subject headings:* circumstellar matter — supernovae: general — supernovae: individual — dust, extinction — infrared: stars

## 1. Introduction

Type II<sub>n</sub> supernovae (SNe; see Filippenko 1997 for a review) have gained considerable attention over the past decade. Representing *less* than 10% of all core-collapse events (Smith et al. 2011), this subclass comprises *more* than 50% of the rare sample of SNe observed to exhibit a late-time (>100 days) infrared (IR) excess with respect to the optical blackbody counterpart, typically suggesting the presence of warm dust (e.g., Gerardy et al. 2002; Fox et al. 2009, 2010, and see Table 1). Named (Schlegel 1990) for their relatively “narrow” ( $\lesssim 700 \text{ km s}^{-1}$ ) emission lines arising from a dense, slowly moving, pre-existing circumstellar medium (CSM), these SNe II<sub>n</sub> may be more prone to have warm dust than any other SN type since (1) dust is able to form in the cool, dense, post-shock layers not available in other SNe (e.g., Pozzo et al. 2004; Smith et al. 2009c), and (2) the same type of luminous blue variable (LBV)-like progenitor shell ejections that create the dense CSM also produce massive dusty shells that can be seen as an echo (e.g., Smith et al. 2008c; Miller et al. 2010a).

The origin and heating mechanism of the dust, however, can be ambiguous. Disentangling the various dust models offers important clues regarding the supernova’s circumstellar environment, explosion mechanism, and even progenitor system (e.g., Fox et al. 2010). For example, if shock heated, the dust temperature correlates with the gas density (Dwek 1987; Dwek et al. 2008), which can be used to trace the progenitor’s mass-loss history (e.g., Smith et al. 2009c; Fox et al. 2010). Alternatively, the discovery of significant amounts of newly formed SN dust would provide the much sought evidence necessary to confirm SN dust models (e.g., Nozawa et al. 2003, 2008). At this point, the observed dust yields all tend to be 2–3 orders of magnitude smaller than predicted by the models (e.g., Kozasa et al. 2009; Meikle et al. 2011, and references therein).

Mid-IR observations, which span the peak of the thermal emission from warm dust, offer the most useful constraints on the dust properties. Yet observations at these wavelengths remain sparse. In fact, the Fox et al. (2010) *Spitzer Space Telescope* IRS spectrum of SN 2005ip is the *only* mid-IR spectrum of a SN II<sub>n</sub> to date. Estimated to have a rate of no more than  $10 \text{ yr}^{-1}$  out to 150 Mpc (Dahlén & Fransson 1999), the number of nearby SNe II<sub>n</sub> is small, and SNe II<sub>n</sub> at greater distances are not easy targets.

The few observed dust-forming SNe IIn, however, are anomalously bright and linger for many years at mid-IR wavelengths, thereby making remnant archeology possible. While 79 SNe IIn within a distance of 250 Mpc were discovered during the years 1999–2008, only 11 of these positions have archived *Spitzer* IRAC data collected (either intentionally or serendipitously) more than a few months post-discovery. Five of these eleven events ( $\sim 45\%$ ) show evidence for late-time IR emission, in some cases up to six years post-discovery: SNe 1999bw (Sugerman et al. 2004; Thompson et al. 2009), 1999el (Carlo et al. 2002), 2002bu (Thompson et al. 2009)<sup>1</sup>, 2003lo (Meikle et al. 2005), and 2005ip (Fox et al. 2009, 2010).

We therefore executed a warm *Spitzer* follow-up survey of the remaining 68 Type IIn events discovered in the years 1999–2008<sup>2</sup>. This paper presents the results of the survey, including the positive detection of late-time emission from ten targets, which more than doubles the database of existing mid-IR observations of SNe IIn. For some targets, optical and near-IR photometry and spectroscopy also exist. In §2 we summarize the observations and data-reduction techniques. *Spitzer* photometry constrains the dust mass, temperature, and, thereby, luminosity. Section 3 implements the methods presented by Fox et al. (2010) to explore the origin and heating mechanism of these components; in most cases, results are compared to SN 2005ip. Section 4 discusses the overall trends, circumstellar model, and progenitor system, while §5 summarizes the results and discusses future work.

## 2. Observations

### 2.1. Mid-Infrared Warm *Spitzer* IRAC Survey and Photometry

Warm *Spitzer*/IRAC (Fazio et al. 2004) surveyed the positions of the 69 SNe IIn in the sample. Although the *Spitzer* warm mission is limited to IRAC bands 1 ( $3.6 \mu\text{m}$ ) and 2 ( $4.5 \mu\text{m}$ ), ground-based observations cannot compare because they have limited sensitivity past  $2 \mu\text{m}$  given the rapidly rising thermal background. Furthermore, these two bands span the peak of the blackbody emission from warm dust ( $100 \lesssim T_d \lesssim 1000 \text{ K}$ ), providing potential constraints on the dust temperature, mass (and thus the luminosity). Assuming peak luminosities comparable to that of SN 2005ip (Fox et al. 2010) for each SN, we developed Astronomical Observation Requests (AORs) that would yield signal-to-noise ratio (SNR)  $\gtrsim 25$  at  $4.5 \mu\text{m}$  to ensure a reliable extraction of the temperature and mass from the fluxes in

---

<sup>1</sup>Note, on the other hand, that despite evidence for dust formation, Smith et al. (2010) suggest that SN 2002bu may be a SN impostor instead of a genuine SN.

<sup>2</sup>We also included the well-studied Type IIn SN 1997ab, for a total of 69 SNe.

the two bands. All integration times were rounded up to a multiple of 5 min to maintain a simple and straightforward AOR. Table 2 lists the observational details.

The Leopard<sup>3</sup> software package provided access to the Post Basic Calibrated Data (pbcd), which are already fully coadded and calibrated. Supernova detections were initially identified with photometry routines ( $\text{SNR} \gtrsim 3$ ) and later confirmed with a visual inspection. Of the 69 SN positions surveyed, 10 SNe exhibit late-time emission (see Figure 1).

The background flux in most of the SN host galaxies is bright and exhibits rapid spatial variations, making faint detections difficult for the DAOPHOT point-spread function (PSF) photometry package in IRAF<sup>4</sup> and limiting the accuracy of sky-brightness measurements using the annuli in the IRAF APPHOT (aperture photometry) package. Although template subtraction is a commonly used technique to minimize photometric confusion from the underlying galaxy, no pre-SN observations exist. Instead, photometry was performed by using a single aperture, with a radius defined by a fixed multiple of the PSF full width at half-maximum intensity (FWHM), to estimate both the SN and average background flux. This technique allowed the user to visually identify only local background associated with the SN, as opposed to the annuli imposed by APPHOT. Figure 2 illustrates this technique in the case of SN 2005cp, where the circles identify the apertures used to extract both the SN and background fluxes. Nearby stellar and nuclear flux, which would normally be included by the sky annuli, do not significantly contribute to the SN flux and are ignored by this technique.

Pixel fluxes were converted from  $\text{mJy sr}^{-1}$  to mJy according to the IRAC Data Handbook version 3, which discusses the pixel size and aperture correction in detail. The DAOPHOT and APPHOT results for the brighter SNe agreed within the uncertainties. Because DAOPHOT did not succeed in detecting the fainter events, however, we only include results from APPHOT. These fluxes are listed in Table 3 and plotted in Figure 3. In some cases, coincident near-IR data from several other instruments exists (see below).

## 2.2. *Spitzer* Survey Supernova Detections

SN 2005cp was discovered in UGC 12886 on 2005 June 20.48 (UT dates are used throughout this paper;  $R \approx 17.4$  mag) by Lee et al. (2005) and spectrally classified by

---

<sup>3</sup>Leopard can be downloaded from <http://ssc.spitzer.caltech.edu/propkit/spot/>.

<sup>4</sup>IRAF: the Image Reduction and Analysis Facility is distributed by the National Optical Astronomy Observatory, which is operated by the Association of Universities for Research in Astronomy (AURA) under cooperative agreement with the National Science Foundation (NSF).

Modjaz et al. (2005). The line profiles consist of both a narrow (FWHM  $\approx 400$  km s $^{-1}$ ) and intermediate (FWHM  $\approx 4000$  km s $^{-1}$ ) component.

**SN 2005gn** was discovered in ESO 488-G30 on 2005 October 13.53 ( $R \approx 18.0$  mag) by Luckas et al. (2005) and Prasad & Li (2005), and spectrally classified by Blanc et al. (2005) and Marsden (2005). The line profiles consist of narrow, intermediate, and broad features, although no line widths were reported.

**SN 2006jd** was discovered in UGC 4179 on 2006 October 12.54 ( $R \approx 17.2$  mag) by Itagaki et al. (2006) and Prasad & Li (2006). It was classified as a SN IIn, but no line widths were reported. Immler et al. (2007) found an associated X-ray luminosity of  $L_X = 2.5 \times 10^{41}$  erg s $^{-1}$  and a visual magnitude  $V = 19.1$  on 2007 November 16.73. *Swift*/XRT measured an X-ray luminosity  $L_X = 2.5 \times 10^{41}$  erg s $^{-1}$  on day 400 (Immler et al. 2007), and Chandra & Soderberg (2007) reported a radio flux density of 238  $\mu$ Jy on day 405.

**SN 2006qq** was discovered in ESO 553-G36 on 2006 October 27.40 ( $R \approx 17.0$ ,  $M_V = -18.4$  mag) by Prasad et al. (2006) and classified by Silverman et al. (2006). The line profiles consist of narrow (FWHM  $\approx 900$  km s $^{-1}$ ) emission upon a relatively featureless continuum.

**SN 2007rt** was discovered in UGC 6109 on 2007 November 24.54 ( $R \approx 16.8$  mag) by Li (2007). It was spectrally classified as a SN IIn about 2–3 months past maximum light (Blondin & Berlind 2007). The line profiles consist of both an intermediate (FWHM  $\approx 2500$  km s $^{-1}$ ) and broad (FWHM  $\approx 10,000$  km s $^{-1}$ ) component. A moderate-resolution spectrum reveals an additional narrow H $\alpha$  P-Cygni profile (FWHM  $\approx 100$  km s $^{-1}$ ) and evidence for new dust formation (Trundle et al. 2009). On day 48, Chandra & Soderberg (2008b) did not detect any radio emission and assigned an upper limit of  $< 9$   $\mu$ Jy.

**SN 2008J** was discovered in MCG -02-7-33 on 2008 February 15.19 ( $R \approx 15.4$  mag) by Thrasher et al. (2008) and classified by (Stritzinger et al. 2008). The line profiles consist of both a narrow and intermediate component, although the line widths were not listed.

**SN 2008cg** was discovered in FGC 1965 on 2008 May 5.39 ( $R \approx 16.7$ ) by Drake et al. (2008) and classified by (Blondin & Hernandez 2008). The line profiles consist of both a narrow (FWHM  $\approx 300$  km s $^{-1}$ ) and intermediate (FWHM  $\approx 1500$  km s $^{-1}$ ) component. *Swift*/UVOT measured  $V = 17.9$  mag on day 58 (Immler et al. 2008). On day 57, however, Chandra & Soderberg (2008a) did not detect any radio emission and assigned an upper limit of  $< 7$   $\mu$ Jy.

**SN 2008en** was discovered in UGC 564 on 2008 August 3.06 ( $R \approx 18.2$  mag) by Boles (2008) and spectrally classified by Steele et al. (2008). These spectra reveal broad (FWHM  $\approx 3700$  km s $^{-1}$ ) Balmer and He I emission lines.

**SN 2008gm** was discovered in NGC 7530 on 2008 October 22.09 ( $R \approx 17.0$  mag) by Pignata et al. (2008) and classified by (Prieto et al. 2008). The line profiles consist of both a narrow (FWHM  $\approx 300$  km s $^{-1}$ ) and intermediate (FWHM  $\approx 1600$  km s $^{-1}$ ) component. Two days following the discovery, Soderberg (2008) did not detect any radio emission and assigned an upper limit of  $< 0.08$  mJy ( $3\sigma$ ).

**SN 2008ip** was discovered in NGC 4846 on 2008 December 31.75 ( $R \approx 15.7$  mag) by Nakano et al. (2009) and classified by Challis & Calkins (2009). No spectral line widths were given. Chandra & Soderberg (2009) report no radio counterpart on day 5 and assign a  $3\sigma$  upper limit of 0.096 mJy (8.46 GHz).

### 2.3. Near-Infrared Photometry and Spectroscopy

Nearly coincident near-IR photometric data were collected for several targets with the Persson Auxiliary Nasmyth Infrared Camera (PANIC; Martini et al. 2004) mounted on the 6.5-m Magellan (Walter Baade) Telescope at the Las Campanas Observatory, Chile. PANIC obtained  $J$ - and  $K_s$ -band photometry of SNe 2008gm (363 days post-discovery), 2008cg (659 days), 2006jd (1230 days), and 2005cp (1582 days). Standard near-IR data-reduction techniques were implemented. The relatively small galaxy sizes allow data frames to double as sky exposures, provided a sufficiently large dither avoids an overlapping galaxy from one exposure to the next. Photometry was performed with the DAOPHOT PSF-fitting techniques. The results are plotted in Figure 3 adjacent to the *Spitzer* photometry and, together, are treated as a single epoch given the near simultaneity of the observations relative to the overall epoch of observation.

TripleSpec, a 0.9–2.5  $\mu\text{m}$ , resolution  $R = 3000$  spectrograph operating at Apache Point Observatory in NM (Wilson et al. 2004; Herter et al. 2008), was used to obtain a spectrum of SN 2006jd on day 1250 post-discovery and a spectrum of SN 2005ip on day 862 post-discovery (originally published by Fox et al. 2010). Forty minutes of on-source integration consisted of 8 independent 5 min exposures nodding between 2 different slit positions. We extracted the spectra with a modified version of the IDL-based *SpexTool* (Cushing et al. 2004). Any underlying galactic and sky emission are approximated in *SpexTool* by a polynomial fit and subtracted from the SN. The results are again plotted in Figure 3 and, combined with the *Spitzer* data, treated as a single epoch.

## 2.4. Optical Photometry and Spectroscopy

Table 4 summarizes the optical spectra obtained with various instruments. Data were obtained with the dual-arm Low Resolution Imaging Spectrometer (LRIS; Oke et al. 1995) mounted on the 10-m Keck I telescope, as well as with the Kast double spectrograph (Miller & Stone 1993) mounted on the Shane 3-m telescope at Lick Observatory. Keck/LRIS spectra were obtained using the 600/4000 or 400/3400 grisms on the blue side and the 400/8500 grating on the red side, along with a 1'' wide slit. This resulted in a wavelength coverage of 3200–9200 Å and a typical resolution of 5–7 Å. Almost every Lick/Kast spectrum was obtained using the 600/4310 grism on the blue side and the 300/7500 grating on the red side, along with a 2'' wide slit. This resulted in a wavelength coverage of 3300–10,400 Å and resolutions of about 5–7 Å and 10–12 Å on the blue and red sides, respectively. Most observations had the slit aligned along the parallactic angle to reduce differential light losses (Filippenko 1982).

The spectra were reduced using standard techniques (e.g., Foley et al. 2003). Routine CCD processing and spectrum extraction were completed with IRAF, and the data were extracted with the optimal algorithm of Horne (1986). We obtained the wavelength scale from low-order polynomial fits to calibration-lamp spectra. Small wavelength shifts were then applied to the data after cross-correlating a template sky to an extracted night-sky spectrum. Using our own IDL routines, we fit a spectrophotometric standard-star spectrum to the data in order to flux calibrate the SN and to remove telluric absorption lines (Wade & Horne 1988; Matheson et al. 2000).

Keck/LRIS also obtained *BVRI* photometry of SNe 2006jd (1609 days) and 2007rt (1223 days) on 2011 March 9. Observations of each target consisted of two dithered 120-s exposures in each band. Again, the data were reduced using standard techniques and routine CCD processing with IRAF. Table 5 lists the photometric results. Only SN 2006jd was detected (see Figure 4), but upper limits for SN 2007rt are also provided.

## 2.5. Dust Composition, Temperature, and Mass

Assuming only thermal emission, the combined near-IR and mid-IR spectra provide a strong constraint on the dust temperature and mass, and thus on the IR luminosity. Assuming optically thin dust with mass  $M_d$ , with a particle radius  $a$ , at a distance  $d$  from the observer, thermally emitting at a single equilibrium temperature  $T_d$ , Fox et al. (2010) show that the flux can be written as

$$F_\nu = \frac{M_d B_\nu(T_d) \kappa_\nu(a)}{d^2}, \quad (1)$$

where  $B_\nu(T_d)$  is the Planck blackbody function and  $\kappa_\nu(a)$  is the dust mass absorption coefficient. (The dust need not be optically thin, but §3.3 shows that optically thin dust is consistent with the pre-existing dust scenario.)

For simple dust populations of a single size composed entirely of either silicate or graphite, the IDL MPFIT function (Markwardt 2009) finds the best fit (see Figure 5) of Equation 1 by varying  $M_d$  and  $T_d$  to minimize the value of  $\chi^2$ . The absorption coefficients,  $\kappa$ , are given in Figure 4 of Fox et al. (2010). The combined photometry and near-IR spectra of SNe 2006jd and 2005ip are best fit by a multi-component model. As opposed to a single component with a continuous temperature distribution, a second, hotter component at a single temperature dominates the near-IR flux, while also contributing to the 3.6  $\mu\text{m}$  flux. For the remaining SNe, the small number of photometric data points limits our fits to a single component. Since a second, hotter component may be contributing to the shorter wavelength flux, we treat the derived dust temperatures for these SNe as upper limits (see §3.3 below for significance).

Table 6 lists the best fitting parameters (i.e., temperature and mass, as well as IR luminosity) for several grain sizes. Overall, grain size has little consequence on the goodness of fit or resulting parameters. The only size-dependent parameter in Equation 1 is  $\kappa$ , but Figure 4 of Fox et al. (2010) shows that the dust-opacity coefficient for both graphite and silicate is independent of grain radius at IR wavelengths ( $>1 \mu\text{m}$ ) for grain sizes  $<1 \mu\text{m}$ , which is typical for most grains. A grain size of  $a = 0.1 \mu\text{m}$  is therefore assumed throughout the rest of this paper, including the results plotted in Figure 5.

In general, the derived dust temperatures, masses, and luminosities are all higher if we assume silicate grain composition. The limited number of data points (2 or 3 in most cases), however, limits the best-fitting function in Figure 5 from distinguishing between the two compositions. The most obvious differentiating feature is the 9  $\mu\text{m}$  silicate emission feature, but the warm IRAC data do not extend beyond  $\sim 5 \mu\text{m}$ . Both compositions are therefore considered throughout the rest of this paper.

Figure 6 plots the temperature, mass, and IR luminosity for  $a = 0.1 \mu\text{m}$  grains for both the graphite and silicate fits, as well as the near-IR evolution of the Type IIIn SNe 2005ip (Fox et al. 2009) and 1995N (Gerardy et al. 2002). By chance, the newly (re)discovered SNe all fall at nearly periodic spacings. If their labels were removed, one might be fooled into thinking the figure plotted evolutionary data for a single SN. The luminosity curve plateaus to a point between 1000 and 2000 days ( $\sim 3\text{--}5 \text{ yr}$ ), at which time it seems to slowly fade with an  $e$ -fold time of several hundred days. Although many of the points are upper limits, the trend appears to closely follow the observed near-IR decline of SN 1995N. Furthermore, at least half of the SNe have derived dust masses  $M_d > 10^{-2} M_\odot$  (and most of the rest have



masses  $M_d > 10^{-3} M_\odot$ ). If newly formed, these dust masses would be some of the largest amounts of newly formed dust observed in SNe to date, providing significant credibility to SN dust models (e.g., Nozawa et al. 2003, 2008). Before any conclusions are drawn, however, we must first disentangle the composition, origin, and heating mechanism of the dust.

### 3. Analysis: Dust Origin and Heating Mechanism

The dust can have several different origins and heating mechanisms. It may be newly formed or it may have been in place at the time of the explosion. If newly formed, the dust may have condensed in the expanding SN ejecta (e.g., Elmhamdi et al. 2004) or in the cool, dense shell of post-shocked gas lying between the forward and reverse shocks (Pozzo et al. 2004; Smith et al. 2008b). In both cases, several heating mechanisms are possible, including radioactivity, radiative heating by the optical emission from circumstellar interaction, and collisional heating by hot gas in the reverse shock.

Alternatively, pre-existing dust may be collisionally heated by hot, shocked gas or radiatively heated by either the peak SN luminosity or the late-time optical emission from circumstellar interaction. In the radiative heating case, the dust reprocesses the optical light and thermal radiation persists until the dust grains cool sufficiently. If this pre-existing dust is distributed in a shell with a light-crossing time greater than the duration of the optical emission, an “IR echo” is evident due to light-travel-time effects. Multiple scenarios can also contribute to the late-time IR flux, as in the cases of SNe 2004et (Kotak et al. 2009), 2004dj (Meikle et al. 2011), and 2006jc (Mattila et al. 2008).

With a detailed analysis of SN 2005ip, Fox et al. (2010) illustrate how to use late-time mid-IR observations, along with optical photometry and spectra, to disentangle the various dust models. First, a few variables must be defined. The blackbody radius, given as  $r_{\text{bb}} = L_{\text{bb}} / (4\pi\sigma T_{\text{bb}}^4)^{1/2}$ , where  $\sigma$  is the Stefan-Boltzmann constant, defines the *minimum* shell size of an observed dust component. The shock radius, given as  $r_s = v_s t$  for a constant shock velocity  $v_s$ , defines the maximum radius that the forward shock can travel in a time  $t$ . Table 7 lists the associated blackbody and shock radii for each SN. Notice that unlike the shock radius, the blackbody radius is *not* a function of the observation epoch.

The shock velocity corresponds to the optical spectral line widths. Three width components are typical for SNe IIn (see Figures 7, 8, and 9, as well as §2.2): narrow ( $\lesssim 700 \text{ km s}^{-1}$ ), intermediate ( $\sim 1000\text{--}5000 \text{ km s}^{-1}$ ), and broad ( $\sim 5000\text{--}15,000 \text{ km s}^{-1}$ ). The narrow lines, which give the Type IIn subclass its name, originate in the slow, dense, pre-existing circumstellar environment when excited by X-ray and ultraviolet (UV) emission generated by the

forward shock. The broad lines arise from the rapidly expanding SN ejecta. The intermediate lines correspond to the forward-shock front, which decelerates as it passes through the dense, slowly moving CSM.

Chugai & Danziger (1994) propose that two unique forward-shock velocities can coexist if the progenitor’s wind is clumpy or asymmetric, as opposed to homogeneous and spherical. A relatively rarefied wind allows uninhibited shocks to maintain the observed high velocities, while a much slower shock propagates through the denser regions. Since the exact geometry of the CSM is not well known, we consider two shock velocities representative of both the broad ( $v_s \approx 15,000 \text{ km s}^{-1}$ ) and intermediate ( $v_s \approx 2500 \text{ km s}^{-1}$ ) components.

A final useful parameter is the late-time optical luminosity,  $L_{\text{opt}}$ . At early times, radioactive decay dominates the optical luminosity. At later times, once the radioactive component fades, interaction between the forward shock and a sufficiently dense CSM can generate X-rays and UV radiation, which can be reprocessed by the dense gas and emitted at optical wavelengths, as in the case of SN 2005ip (e.g., Smith et al. 2009c). For most of the SNe in this paper, however, few late-time optical observations exist, especially at epochs coincident with the *Spitzer* observations. Aside from SNe 2006jd and 2007rt (see Table 5 and Trundle et al. 2009), we assume a late-time optical luminosity equal to that observed in SN 2005ip ( $\log(L_{\text{opt}}/L_{\odot}) = 7.8$ ; Fox et al. 2010).

### 3.1. Newly Formed Dust

New dust may condense in either the slowly moving ejecta or in the cool, dense shell behind the forward shock (and in front of the reverse shock). Since the dust will preferentially absorb emission from redshifted (far-side) material, the lack of attenuation in the red wing of the optical emission lines provides a straightforward method for testing whether the dust is newly formed. (Due to the SN geometry, dust in the slowly moving ejecta closest to the core absorbs redshifted emission from the broad, intermediate, and narrow lines, while dust in the cool dense shell beyond the fastest ejecta absorbs redshifted emission only from the intermediate and narrow components.)

Typically, such emission-line evidence for dust formation occurs at later epochs, once the ejecta expand and become optically thin. For the first 40-50 days, larger optical depths in the ejecta suppress the redshifted emission (Chugai 2001) so that attenuation in the red wing is little indication of newly formed dust. Smith et al. (2009c) spectroscopically confirm new dust formation in SN 2005ip as early as day 60 post-discovery (similar to the “Type IIn-like” SN 2006jc, in which new dust was confirmed as early as 51 days after the peak

brightness (Smith et al. 2008b)). Trundle et al. (2009) also provide spectroscopic evidence of dust formation for SN 2007rt.

Of the remaining SNe in this sample, late-time spectra exist only for SNe 2006jd, 2008cg, and 2008J (see Table 4). Figures 7, 8, and 9 plot the H $\alpha$  line from these optical spectra with the flux normalized to the underlying continuum level, and the velocity scale chosen with the narrow H $\alpha$  emission feature at  $v = 0$  km s $^{-1}$ . In some cases, the negative (blueshifted) velocity axis is mirrored (dotted line) on the positive (redshifted) side to provide a qualitative comparison between the redshifted and blueshifted components. Figure 7 shows no evidence of absorption in SN 2006jd (in fact, it exhibits an excess likely due to the [N II]  $\lambda$ 6583 line).

Alternatively, Figures 8 and 9 show the broad ( $\sim 10^4$  km s $^{-1}$ ) and intermediate ( $\sim 10^3$  km s $^{-1}$ ) components of the H $\alpha$  line of SNe 2008cg and 2008J at late times. Both SNe show some degree of increasing absorption in the red wing relative to the blue wing from days  $\geq 63$  and 224, respectively. Simultaneous absorption in both the broad and intermediate components implies that dust is forming in the ejecta. Still, the dust masses listed in Table 6 are  $M_d \leq 10^{-2} M_\odot$ , which is less than in SN 2005ip and much lower than the  $M_d = 0.1$ – $1 M_\odot$  predicted by the SN dust models (e.g., Nozawa et al. 2003, 2008). Furthermore, the relative contribution of this newly formed dust to the overall mid-IR flux is not immediately clear. Along with the fact that the remaining SNe in this sample do not have late-time spectra, we must therefore consider the pre-existing dust models for all of these SNe.

### 3.2. Shock Heating

In the shock heating scenario, hot electrons in the post-shocked gas collisionally heat pre-existing dust grains (Dwek 1987; Dwek et al. 2008). Fox et al. (2010) derive the *estimated* mass of dust heated by the forward shock, which serves as a useful consistency check when compared to the *observed* dust mass. For the forward shock at time  $t$ , the mass of the shocked gas is

$$M_g(M_\odot) \approx 8.3 \times 10^{-5} \left( \frac{v_s}{1000 \text{ km s}^{-1}} \right)^3 \left( \frac{t}{\text{yr}} \right)^2 \left( \frac{a}{\mu\text{m}} \right) \quad (2)$$

for a hydrogen atomic mass  $m_H$ , shock velocity  $v_s$ , and grain size  $a$ , provided that the sputtering time scale  $\tau_{\text{sputt}} < (t, \tau_{\text{cool}})$ , where  $\tau_{\text{cool}}$  is the radiative cooling time scale. The dust mass is then given by assuming a Galactic dust-to-gas mass ratio,  $Z_d = M_d/M_g \approx 0.01$ .

Table 8 compares the expected dust masses for the *fastest* shocks ( $v = 15,000$  km s $^{-1}$ ) to the observed masses listed in Table 6. SNe 2008ip, 2008gm, 2005gn, and 2005cp have dust masses consistent with the models, but these cases all assume a forward shock traveling at a constant speed of  $v_s \approx 15,000$  km s $^{-1}$  throughout the entire expansion without experiencing

any deceleration. While this may be possible for the two SNe from 2008, it is not likely for the two events from 2005. Furthermore, SNe 2008ip and 2008gm have noticeably small blackbody radii that are fairly consistent with their shock radii ( $r_{\text{bb}} \approx r_{\text{s2}}$ ), which may provide further support for the shock-heating argument. The predicted dust masses for the remaining SNe, however, are more than an order of magnitude lower than observed, thereby ruling out shock heating for most of these events.

### 3.3. Radiative Heating

Optical emission from the SN may radiatively heat a shell of pre-existing dust at a radius  $r$  to a temperature  $T_{\text{d}}$ . Fox et al. (2010) outline three basic scenarios. For the first two scenarios, the peak SN luminosity heats the dust, and light-travel-time effects cause the thermal radiation from the dust grains to reach the observer over an extended period of time, thereby forming an “IR echo” (e.g., Bode & Evans 1980; Dwek 1983; Emmering & Chevalier 1988). First, the dust may be distributed spherically symmetrically around the star at the time of the explosion. The SN peak luminosity then vaporizes the dust out to the evaporation radius  $r_{\text{evap}}$ , and heats the inside of the remaining dust shell to a temperature roughly equal to the vaporization temperature ( $T_{\text{d}} \approx T_{\text{evap}}$ ). Alternatively, the dust may be distributed in a shell at a radius  $r > r_{\text{evap}}$  (most likely formed by a progenitor eruption hundreds to thousands of years prior to the SN). The SN peak luminosity heats the inside of this shell to a temperature  $T_{\text{d}} \leq T_{\text{evap}}$ . The light-echo plateau duration  $t_{\text{p}}$  defines the minimum shell radius,  $r_{\text{p}} = ct_{\text{p}}/2$ . In many cases (e.g., Fox et al. 2009), the resulting IR luminosity plateau occurs on year-long time scales, corresponding to the light travel time across the inner edge of the dust shell.

In the final scenario, the dust may be distributed in a shell at radii between the evaporation and plateau radii,  $r_{\text{evap}} \leq r \leq r_{\text{p}}$ . The late-time optical luminosity generated by circumstellar interaction,  $L_{\text{opt}}$ , continuously heats the dust shell. This scenario is not so much a traditional IR echo as it is a reprocessing of the optical emission by the dust.<sup>5</sup> If the circumstellar interaction occurs on a time scale greater than the light travel time across the dust shell (which we assume it does in these cases), the shell radius does not set the IR plateau length. The observed flux therefore accounts for the entire shell.

For a simple light-echo model dominated by flux from only the innermost, warmest dust

---

<sup>5</sup>Some authors refer to this as a circumstellar interaction echo (Gerardy et al. 2002), but the reader should note that the heating mechanism is radiation from the shocks, rather than direct collisional heating by the shocks themselves.

at a single temperature  $T_d$ , Fox et al. (2010) show that by balancing the energy absorbed and emitted by the dust grains, the SN optical luminosity  $L_{\text{opt}}$  is related to the dust temperature and inner shell radius by

$$L_{\text{opt}} = \frac{64}{3} \rho a r^2 \sigma T_{\text{SN}}^4 \frac{\int B_\nu(T_d) \kappa(\nu) d\nu}{\int B_\nu(T_{\text{SN}}) Q_{\text{abs}}(\nu) d\nu}, \quad (3)$$

for a dust bulk (volume) density  $\rho$  and an effective SN blackbody temperature  $T_{\text{SN}}$ . When using this equation, we generally assume  $a = 0.1 \mu\text{m}$  grains and a SN temperature  $T_{\text{SN}} \approx 10,000 \text{ K}$ , although the results are fairly insensitive to the choice of temperature. The luminosity is treated as a central point source, assuming the emitting region is internal to a spherically symmetric dust shell.

Using Equation 3, Figure 10 plots contours of the *expected* dust temperature as a function of shell radius  $r$  for various optical luminosities. We choose luminosities  $10^7 \leq L_{\text{opt}} \leq 10^{11} L_\odot$ , which span the observed peak and late-time optical luminosities for these SNe. Overplotted are the *observed* dust temperatures and radii derived from the *Spitzer* data (see Tables 6 and 7). Only dust with graphite composition is considered, as silicate grains require much higher luminosities than observed ( $> 10^{11} L_\odot$ ) to heat dust grains of comparable sizes to the observed temperatures.

Considering the first scenario above, the vaporization radii  $r_{\text{evap}}$  are all  $< 1 \text{ ly}$ , which is too small to produce an IR echo over the observed year-long time scales. At the other extreme, Figure 10(a) tests the second scenario by comparing the expected and observed temperatures assuming the dust lies at the plateau radii  $r_p$  defined by the light-echo plateau duration  $t_p$ . At these radii, the SNe require unrealistically large peak luminosities ( $> 10^{10} L_\odot$ ) to power the observed echo. Not only are the required peak luminosities significantly larger than the measured ones, but they are larger than the most luminous core-collapse events ever found (Quimby et al. 2007). In each case, we therefore rule out an IR echo powered by the peak luminosity.

Figure 10(b) tests the final scenario, in which the optical luminosity generated by continuous interaction between the forward shock and CSM offers an alternative heating mechanism. In this case, the dust is assumed to lie at the smallest radius allowed by the observations, defined by the larger of the blackbody and slow-shock radii in Table 7 ( $r_{\text{min}} = \text{MAX}(r_{\text{bb}}, r_{\text{s2}})$ ; the dust must always lie beyond the shock radius or else it would have been destroyed, but at the same time cannot lie at radii smaller than the blackbody radius).

The observed dust temperatures for most of the SNe require optical luminosities  $10^7 < L_{\text{opt}} < 10^8 L_\odot$ . While such late-time optical luminosities are larger than observed in most SN

subclasses, they are quite realistic for Type IIn events. For example, late-time observations show  $L_{\text{opt}}$  (SN 2005ip) =  $10^{7.8} L_{\odot}$  on days  $>900$  (Smith et al. 2009c),  $L_{\text{opt}}$  (SN 2006jd) =  $10^{7.7} L_{\odot}$  on day 1609 (Table 5), and  $L_{\text{opt}}$  (SN 2007rt)  $\approx 10^8 L_{\odot}$  on day 562 (Trundle et al. 2009)<sup>6</sup>.

The dust temperatures for some of the SNe, particularly SNe 2007rt and 2006jd, do fall above the expected values for a luminosity  $L_{\text{opt}} \approx 10^8 L_{\odot}$ . However, in these cases a second, hotter dust component may be contributing to the mid-IR flux. Already, we know from the fits in Figure 5 that SN 2006jd has a hotter dust component. Also, Trundle et al. (2009) show that new dust forms in SN 2007rt, although they do not measure the temperature. Similarly, Figures 8 and 9 exhibit evidence for new dust formation in SNe 2008cg and 2008J. Like SN 2005ip (Fox et al. 2010), this newly formed dust may be hotter than the mid-IR dust component. In these cases, the observed *Spitzer* temperatures would be only upper limits. The resulting lower dust temperatures and corresponding lower blackbody radii would place these points significantly closer to their luminosity contour lines.

Late-time optical observations are not available for SNe 2005cp, 2005gn, 2006qq, 2008J, 2008cg, 2008en, 2008gm, and 2008ip, but almost all of these points fall close to or along luminosity contours comparable to observed late-time optical luminosities of SNe 2005ip, 2006jd, and 2007rt. In general, the data are fairly consistent with heating by optical emission generated by continuous circumstellar interaction. Using different methods, Gerardy et al. (2002) reached a similar conclusion in their study of late-time emission from five SNe. Two of the Gerardy et al. targets, SNe 1999Z and 1997ab, are actually on our initial target list. The fact that we failed to detect any late-time mid-IR emission comes as little surprise given that the forward shock would eventually destroy the pre-existing dust shells, a trend we observe in Figure 6 and discuss more below in §4.

A simple calculation shows that the pre-existing dust shells in this model are optically thin at IR wavelengths, consistent with assumptions for deriving the dust mass in Equation 1. For a dust shell given by a blackbody radius  $r_{\text{bb}}$ , the optical depth can be written as

$$\tau_{\text{bb}} = \frac{M_{\text{d}}}{4\pi r_{\text{bb}}^2} \kappa_{\text{avg}}, \quad (4)$$

where  $\kappa_{\text{avg}} = 435 \text{ cm}^2 \text{ g}^{-1}$  is the absorption coefficient for graphite averaged over 1–15  $\mu\text{m}$  (see Figure 4 of Fox et al. 2010). For each SN except SN 2005ip,  $\tau_{\text{bb}} < 1$ . Using the additional spectroscopic data for SN 2005ip provided by Fox et al. (2010), however, we derive

---

<sup>6</sup>We reconcile the fact that our most recent optical observations do not detect SN 2007rt by noting that our observations were made nearly 500 days following the original *Spitzer* observations.

an optical depth  $\tau_{\text{bb}} \approx 0.5$ . Furthermore, since the blackbody radii are only lower limits, these optical depths are all upper limits.

#### 4. Trends, Progenitors, and Overall Model

For the above scenario, in which UV and optical emission from circumstellar interaction radiatively heats pre-existing dust, the observed dust mass accounts for the entire dust shell since the shell-radius light travel time ( $2r_{\text{min}}/c$ ) is significantly smaller than the circumstellar interaction time scale given by the epoch of observation (see Table 7). Assuming a dust-to-gas mass ratio expected in the H-rich envelope of a massive star,  $Z_{\text{d}} = M_{\text{d}}/M_{\text{g}} \approx 0.01$ , the pre-existing dust mass corresponds to a progenitor mass-loss rate

$$\dot{M} = \frac{M_{\text{d}}}{Z_{\text{d}}\Delta r}v_{\text{w}} \quad (5)$$

$$= 0.75\left(\frac{M_{\text{d}}}{M_{\odot}}\right)\left(\frac{v_{\text{w}}}{120 \text{ km s}^{-1}}\right)\left(\frac{0.05 \text{ ly}}{r}\right)\left(\frac{r}{\Delta r}\right)(M_{\odot} \text{ yr}^{-1}), \quad (6)$$

for a wind speed  $v_{\text{w}}$ . The SNe in §2.2 have narrow line profiles with FWHM in the range  $\sim 100\text{--}500 \text{ km s}^{-1}$ . Since these narrow lines originate in the slow, dense, pre-existing circumstellar environment, they are typically assumed to directly correspond to the progenitor wind speed.

Assuming a thin shell,  $\Delta r/r = 1/10$ , Table 9 lists the associated mass-loss rate for each SN. The fact that this dust is collected within a shell at a radius larger than the evaporation radius,  $r > r_{\text{evap}}$ , suggests that the progenitor likely underwent a period of increased mass loss prior to the SN at a time  $t_{\text{eruption}} \approx r_{\text{min}}/v_{\text{w}}$ , which corresponds to tens to hundreds of years (see Table 9). Such an eruptive event is inferred in many other Type IIn events (e.g., Chugai & Danziger 1994; Salamanca et al. 2002; Gal-Yam et al. 2007; Smith et al. 2007, 2008a, 2009a). The properties are generally consistent with LBVs during their giant eruptions, which have wind speeds on the order of hundreds of  $\text{km s}^{-1}$  and mass-loss rates  $\dot{M} = 10^{-5} - 10^{-4} M_{\odot} \text{ yr}^{-1}$  (Humphreys & Davidson 1994), but can reach much higher (Smith & Owocki 2006; Smith et al. 2007). In fact, the total dust-shell masses are in the range  $10^{-5} < M_{\text{d}} < 10^{-1} M_{\odot}$  (see Table 6), which, assuming a dust-to-gas mass ratio  $Z_{\text{d}} \approx 0.01$ , are also consistent with the range of LBV shell masses observed by Smith & Owocki (2006).

The story starts to get interesting when we revisit Figure 6. Overall, a significant percentage of the SNe IIn from the past 10 years ( $\sim 15\%$ ) show late-time mid-IR emission (and the percentage is over 50% when only considering SNe with explosion dates within 5 years of the observations.) After about 1000–2000 days (3–5 years) post-discovery, the

luminosity begins to steadily decline, which likely occurs when the forward shock ultimately overruns and destroys the pre-existing dust shell. The apparent consistency amongst these SNe suggests that the progenitors all tend to undergo a massive outburst at nearly the same period prior to going SN (i.e., tens to hundreds of years). If indeed the progenitors are LBVs, which are associated with initial stellar masses  $M_0 > 25 M_\odot$  (Smith et al. 2004), this result could have significant implications on mass-loss properties of the high mass, low-metallicity stars observed in the early universe (e.g., Smith & Owocki 2006). These conclusions are also particularly noteworthy for stellar evolution theorists, whose models do not place LBVs in the final pre-SN phase (Schaller et al. 1992; Langer 1993; Langer et al. 1994; Stothers & Chin 1996; Maeder et al. 2005; Maeder & Meynet 2008).

Of course, LBVs are not necessarily the progenitor of all SNe IIn, and several caveats should be mentioned. Primarily, there is a significant diversity among the targets in this sample. Not only can some of the SNe with late-time emission be explained with other models (e.g., shock heating), but a large percentage of the sample does not exhibit any late-time X-ray, optical, IR, or radio emission. Of well-studied SNe IIn, many show varying degrees of circumstellar interaction (Li et al. 2002; Trundle et al. 2009). In the extreme case of SN 1986J, for example, late-time optical emission is observed more than two decades post-detection (Milisavljevic et al. 2008). (The faded  $H\alpha$  line relative to the strong [O I] line, however, suggests that the bulk of the emission is generated by the reverse shock, *not* the forward shock.) Not only do the observations vary, but several other SNe IIn have shown evidence for red supergiant (RSG) progenitors (Fransson et al. 2002; Smith et al. 2009b). Furthermore, Dwarkadas (2011) invokes several other scenarios to explain the dense circumstellar shells, including wind-blown bubbles, high-density clumps, or even very short Wolf-Rayet stages following the LBV outbursts.

## 5. Conclusion

The *Spitzer* survey in this paper targets 68 SNe IIn discovered in 1999-2008 without late-time mid-IR observations, as well as the well-studied Type IIn SN 1997ab. Ten of the 69 SNe ( $\sim 15\%$ ) display late-time mid-IR emission from warm dust. Table 10 summarizes the evidence available to support the multiple origins and heating mechanisms explored for each SN. Although some SNe show evidence of newly formed dust or shock heating of pre-existing dust, observations for almost every SN are consistent with the scenario in which pre-existing dust is radiatively heated by optical emission from late-time circumstellar interaction between the forward shock and dense CSM (see the third scenario of §3.3). A similar conclusion was reached by Gerardy et al. (2002) regarding several other Type IIn



events that have since faded.

Although the model has not yet been confirmed, a trend amongst the Type IIn subclass begins to emerge. The late-time IR emission associated with this subclass appears to originate from a pre-existing dust shell expelled by the progenitor star. With some basic assumptions, the dust-shell properties indicate that the progenitor winds and mass-loss rates are most consistent with the properties of LBVs. In almost every case, the LBVs appear to undergo a similar eruptive event as they evolve along toward their stellar death. These results therefore contribute to the growing evidence that SNe are not likely major sources of dust, although their progenitors might be if the forward shock does not ultimately destroy the dust.

Still, several caveats exist that offer alternative explanations for the dense dust shells without invoking LBV progenitors. The advantage to the model in this paper is that it allows us make predictions. If the dust is distributed in a shell, and the heating mechanism is indeed continuous radiation generated by the forward shock, we expect the shock to eventually overtake the shell radius and destroy the dust. As the dust is destroyed, the late-time mid-IR emission should begin to significantly decrease. While we see this general trend in Figure 6, no single SN IIn has multi-epoch mid-IR data that reveal the SN “turning off.”

We can calculate the approximate point in time when this will happen as  $t \approx R_{\text{bb}}/v_s$ , where  $v_s$  is the forward-shock velocity. In general, the faster shock radii ( $r_{s1}$ ) extend beyond the blackbody radii, but the slower shock radii ( $r_{s2}$ ) do not. For the observed blackbody radii,  $0.01 < R_{\text{bb}} < 0.1$  light year, and slow shock velocities,  $v_s \approx 2500 \text{ km s}^{-1}$ , we would expect the shock to overtake the shell at about 1–10 yr. Once the shock destroys the dust, the luminosity decline will occur on time scales consistent with the dust-shell radius ( $t_{\text{decline}} = 2r_{\text{bb}}/c \approx 3 \text{ yr}$ ), as the dust destruction on the near side of the shell will be observed before dust destruction on the far side. This time scale is consistent with the apparent decline (determined from the upper limits) in Figure 6. Of course, slower shock speeds or asymmetric shell geometries would result in varying time scales, but mid-IR monitoring of these SNe will help to constrain the various models and geometries.

This work is based on observations made with the *Spitzer Space Telescope* (PID 60122), which is operated by the Jet Propulsion Laboratory, California Institute of Technology, under a contract with NASA. Support for this work was provided by NASA through an award issued by JPL/Caltech. O.D.F. is grateful for support from the NASA Postdoctoral Program (NPP). R.A.C. was supported by NSF grant AST-0807727. A.V.F. is grateful for

the support of NSF grant AST-0908886 and the TABASGO Foundation. J.M.S. thanks Marc J. Staley for a graduate fellowship. Some of the data presented herein were obtained at the W. M. Keck Observatory, which is operated as a scientific partnership among the California Institute of Technology, the University of California, and NASA; the observatory was made possible by the generous financial support of the W. M. Keck Foundation. We thank the staffs of the Lick and Keck Observatories for their assistance with the observations. We are also grateful to many students and postdocs who helped take and reduce the optical spectra.

## REFERENCES

- Andrews, J. E., et al. 2010, *ApJ*, 715, 541
- . 2011, arXiv:1102.2431
- Blanc, N., et al. 2005, *A TEL*, 635, 1
- Blondin, S., & Berlind, P. 2007, *IAU Circ.*, 1156, 1
- Blondin, S., & Hernandez, J. 2008, *IAU Circ.*, 1295, 1
- Bode, M. F., & Evans, A. 1980, *MNRAS*, 193, 21
- Boles, T. 2008, *IAU Circ.*, 1459, 1
- Botticella, M. T., et al. 2009, *MNRAS*, 398, 1041
- Carlo, E. D., et al. 2002, *ApJ*, 573, 144
- Challis, P., & Calkins, M. 2009, *CBET*, 1649, 1
- Chandra, P., & Soderberg, A. 2007, *A TEL*, 1297, 1
- . 2008a, *A TEL*, 1594, 1
- . 2008b, *A TEL*, 1359, 1
- . 2009, *A TEL*, 1891, 1
- Chugai, N. N. 2001, *Monthly Notices of the Royal Astronomical Society*, 326, 1448
- Chugai, N. N., & Danziger, I. J. 1994, *MNRAS*, 268, 173
- Cushing, M. C., Vacca, W. D., & Rayner, J. T. 2004, *PASP*, 116, 362

- Dahlén, T., & Fransson, C. 1999, *A&A*, 350, 349
- Drake, A. J., Djorgovski, S. G., Mahabal, A., Graham, M. J., Williams, R., Beshore, E. C., Larson, S. M., & Christensen, E. 2008, *IAU Circ.*, 1366, 1
- Dwarkadas, V. V. 2011, *MNRAS*, 23
- Dwek, E. 1983, *ApJ*, 274, 175
- Dwek, E. 1987, *ApJ*, 322, 812
- Dwek, E., et al. 2008, *ApJ*, 676, 1029
- Elias, J. H., Matthews, K., Neugebauer, G., & Soifer, B. T. 1986, *BAAS*, 18, 1016
- Elmhamdi, A., Danziger, I. J., Cappellaro, E., Valle, M. D., Gouiffes, C., Phillips, M. M., & Turatto, M. 2004, *A&A*, 426, 963
- Elmhamdi, A., et al. 2003, *MNRAS*, 338, 939
- Emmering, R. T., & Chevalier, R. A. 1988, *AJ*, 95, 152
- Fazio, G. G., et al. 2004, *ApJS*, 154, 10
- Fesen, R. A. 1998, *AJ*, 115, 1107
- Filippenko, A. V. 1982, *PASP*, 94, 715
- . 1997, *ARA&A*, 35, 309
- Foley, R. J., et al. 2003, *PASP*, 115, 1220
- Fox, O., et al. 2009, *ApJ*, 691, 650
- Fox, O. D., Chevalier, R. A., Dwek, E., Skrutskie, M. F., Sugerman, B. E. K., & Leisenring, J. M. 2010, *ApJ*, 725, 1768
- Fransson, C., et al. 2002, *ApJ*, 572, 350
- Gal-Yam, A., et al. 2007, *ApJ*, 656, 372
- Garnavich, P., Noriega-Crespo, A., & Moro-Martin, A. 1996, *IAU Circ.*, 6314, 1
- Gerardy, C. L., et al. 2002, *ApJ*, 575, 1007
- Graham, J. R., & Meikle, W. P. S. 1986, *MNRAS*, 221, 789

- Graham, J. R., et al. 1983, *Nature*, 304, 709
- Herter, T. L., et al. 2008, *Proc. of SPIE*, 7014, 30
- Horne, K. 1986, *PASP*, 98, 609
- Humphreys, R. M., & Davidson, K. 1994, *PASP*, 106, 1025
- Immler, S., Brown, P. J., Filippenko, A. V., & Pooley, D. 2007, *ATEL*, 1290, 1
- Immler, S., Filippenko, A. V., & Pooley, D. 2008, *ATEL*, 1598, 1
- Itagaki, K., et al. 2006, *IAU Circ.*, 8762, 1
- Kotak, R., Meikle, P., van Dyk, S. D., Höflich, P. A., & Mattila, S. 2005, *ApJ*, 628, L123
- Kotak, R., Meikle, W. P. S., Adamson, A., & Leggett, S. K. 2004, *MNRAS*, 354, L13
- Kotak, R., et al. 2006, *ApJ*, 651, L117
- . 2009, *ApJ*, 704, 306
- Kozasa, T., Nozawa, T., Tominaga, N., Umeda, H., Maeda, K., & Nomoto, K. 2009, *arXiv:0903.0217*
- Langer, N. 1993, *Space Sci Rev*, 66, 365
- Langer, N., Hamann, W.-R., Lennon, M., Najarro, F., Pauldrach, A. W. A., & Puls, J. 1994, *A&A*, 290, 819
- Lee, E., Ponticello, N. J., & Li, W. 2005, *IAU Circ.*, 8550, 1
- Leibundgut, B., Kirshner, R. P., Pinto, P. A., Rupen, M. P., Smith, R. C., Gunn, J. E., & Schneider, D. P. 1991, *ApJ*, 372, 531
- Lewis, J. R., et al. 1994, *MNRAS*, 266, L27
- Li, W. 2007, *IAU Circ.*, 1148, 1
- Li, W., Filippenko, A. V., Dyk, S. D. V., Hu, J., Qiu, Y., Modjaz, M., & Leonard, D. C. 2002, *PASP*, 114, 403
- Luckas, P., Trondal, O., Schwartz, M., Prasad, R. R., Shimasaki, K., Lee, E., & Li, W. 2005, *IAU Circ.*, 8616, 2

- Maeder, A., & Meynet, G. 2008, in *Mass Loss from Stars and the Evolution of Stellar Clusters*, ed. A. de Koter, L. J. Smith, & L. B. F. M. Waters, Vol. 388, 3
- Maeder, A., Meynet, G., & Hirschi, R. 2005, in *Cosmic Abundances as Records of Stellar Evolution and Nucleosynthesis*, ed. T. G. B. III & F. N. Bash, Vol. 336, 79
- Maguire, K., et al. 2010, *MNRAS*, 284
- Markwardt, C. B. 2009, *Astronomical Data Analysis Software and Systems XVIII ASP Conference Series*, 411, 251
- Marsden, B. G. 2005, *IAU Circ.*, 260, 5
- Martini, P., Persson, S. E., Murphy, D. C., Birk, C., Shectman, S. A., Gunnels, S. M., & Koch, E. 2004, *Proc. of SPIE*, 5492, 1653
- Matheson, T., Filippenko, A. V., Ho, L. C., Barth, A. J., & Leonard, D. C. 2000, *AJ*, 120, 1499
- Mattila, S., et al. 2008, *MNRAS*, 389, 141
- Meikle, P., et al. 2011, arXiv:1103.2885
- Meikle, W. P., et al. 2005, *Spitzer Proposal*, 20256
- Meikle, W. P. S., et al. 2006, *ApJ*, 649, 332
- . 2007, *ApJ*, 665, 608
- Merrill, K. M. 1980, *IAU Circ.*, 3444, 3
- Milisavljevic, D., Fesen, R. A., Leibundgut, B., & Kirshner, R. P. 2008, *ApJ*, 684, 1170
- Miller, A. A., Smith, N., Li, W., Bloom, J. S., Chornock, R., Filippenko, A. V., & Prochaska, J. X. 2010a, *AJ*, 139, 2218
- Miller, A. A., et al. 2010b, *MNRAS*, 404, 305
- Miller, J. S., & Stone, R. P. S. 1993, *Lick Obs. Tech. Rep. 66* (Santa Cruz: Lick Obs.)
- Modjaz, M., Kirshner, R., Challis, P., & Calkins, M. 2005, *IAU Circ.*, 8628, 2
- Nakano, S., Kobayashi, T., Kadota, K., Itagaki, K., Denisenko, D., Korotkiy, S., & Kryachko, T. 2009, *CBET*, 1641, 1

- Nozawa, T., Kozasa, T., Umeda, H., Maeda, K., & Nomoto, K. 2003, *ApJ*, 598, 785
- Nozawa, T., et al. 2008, *ApJ*, 684, 1343
- Oke, J. B., et al. 1995, *PASP*, 107, 375
- Pastorello, A., et al. 2002, *MNRAS*, 333, 27
- Pignata, G., et al. 2008, *IAU Circ.*, 1549, 1
- Pozzo, M., Meikle, W. P. S., Fassia, A., Geballe, T., Lundqvist, P., Chugai, N. N., & Sollerman, J. 2004, *MNRAS*, 352, 457
- Prasad, R. R., & Li, W. 2005, *CBET*, 252, 1
- . 2006, *IAU Circ.*, 673, 1
- Prasad, R. R., Li, W., & Folatelli, G. 2006, *IAU Circ.*, 766, 1
- Prieto, J. L., et al. 2008, *ApJL*, 681
- Quimby, R. M., Aldering, G., Wheeler, J. C., Höflich, P., Akerlof, C. W., & Rykoff, E. S. 2007, *ApJ*, 668, L99
- Salamanca, I., Terlevich, R. J., & Tenorio-Tagle, G. 2002, *MNRAS*, 330, 844
- Schaller, G., Schaerer, D., Meynet, G., & Maeder, A. 1992, *Astronomy and Astrophysics Supplement Series*, 96, 269
- Schlegel, E. M. 1990, *MNRAS*, 244, 269
- Silverman, J. M., Wong, D., Filippenko, A. V., & Chornock, R. 2006, *IAU Circ.*, 766, 2
- Smith, N., Chornock, R., Li, W., Ganeshalingam, M., Silverman, J. M., Foley, R. J., Filippenko, A. V., & Barth, A. J. 2008a, *ApJ*, 686, 467
- Smith, N., Chornock, R., Silverman, J. M., Filippenko, A. V., & Foley, R. J. 2009a, *ApJ*, 709, 856
- Smith, N., Foley, R. J., & Filippenko, A. V. 2008b, *ApJ*, 680, 568
- Smith, N., Hinkle, K. H., & Ryde, N. 2009b, *AJ*, 137, 3558
- Smith, N., Li, W., Filippenko, A. V., & Chornock, R. 2011, *MNRAS*, 314
- Smith, N., & Owocki, S. P. 2006, *ApJ*, 645, L45

- Smith, N., Silverman, J. M., Ganeshalingam, M., & Filippenko, A. V. 2010, arXiv:1010.3718v2
- Smith, N., Vink, J. S., & de Koter, A. 2004, ApJ, 615, 475
- Smith, N., et al. 2007, ApJ, 666, 1116
- . 2008c, ApJ, 686, 485
- . 2009c, ApJ, 695, 1334
- Soderberg, A. 2008, ATEL, 1811, 1
- Steele, T. N., Ganeshalingam, M., Chornock, R., & Filippenko, A. V. 2008, IAU Circ., 1465, 4
- Stothers, R. B., & Chin, C.-W. 1996, ApJ, 468, 842
- Stritzinger, M., Folatelli, G., & Morrel, N. 2008, IAU Circ., 1218, 2
- Sugerman, B., Meixner, M., Fabbri, J., & Barlow, M. 2004, IAU Circ., 8442, 2
- Sugerman, B. E. K., et al. 2006, Science, 313, 196
- Szalai, T., Vinkó, J., Balog, Z., Gáspár, A., Block, M., & Kiss, L. L. 2011, A&A, 527, 61
- Telesco, C., Becklin, E., Koehler, R., & Gatley, I. 1981, IAU Circ., 3613, 2
- Thompson, T. A., Prieto, J. L., Stanek, K. Z., Kistler, M. D., Beacom, J. F., & Kochanek, C. S. 2009, ApJ, 705, 1364
- Thrasher, P., Li, W., & Filippenko, A. V. 2008, IAU Circ., 1211, 1
- Trundle, C., et al. 2009, A&A, 504, 945
- Tsvetkov, D. Y. 2008, Peremennye Zvezdy, 28, 6
- Wade, R. A., & Horne, K. 1988, ApJ, 324, 411
- Weiler, K. W., Panagia, N., & Sramek, R. A. 1990, ApJ, 364, 611
- Wilson, J. C., et al. 2004, Proc. of SPIE, 5492, 1295

Table 1. All SNe with **Observed** Late-Time IR Excess \*

SN	Subclass	<i>Spitzer</i> Observations?/ Detections?	Reference
1979c	II	No/No	Merrill (1980)
1980k	II	No/No	Telesco et al. (1981)
1982e	?	No/No	Graham et al. (1983); Graham & Meikle (1986)
1982l	II	No/No	Graham & Meikle (1986)
1982r	I	No/No	Graham & Meikle (1986)
1985l	II	No/No	Elias et al. (1986); Fesen (1998)
1986J	IIIn	No/No	Weiler et al. (1990); Leibundgut et al. (1991)
1987A	II	Yes/Yes	Many Authors
1993J	IIb	No/No	Lewis et al. (1994); Matheson et al. (2000)
1994Y	?	No/No	Garnavich et al. (1996)
1995G	IIIn	No/No	Pastorello et al. (2002)
1995N	IIIn	No/No	Gerardy et al. (2002)
1997ab	IIIn	No/No	Gerardy et al. (2002)
1998S	IIIn	No/No	Gerardy et al. (2002); Pozzo et al. (2004)
1999Z	IIIn	No/No	Gerardy et al. (2002)
1999bw	IIIn	Yes/Yes	Sugerman et al. (2004)
1999el	IIIn	No/No	Gerardy et al. (2002); Carlo et al. (2002)
1999em	IIP	No/No	Elmhamdi et al. (2003)
2002bu	IIIn	Yes/Yes	Thompson et al. (2009)
2002hh	IIP	Yes/Yes	Meikle et al. (2006)
2002ic	Ia/IIIn	No/No	Kotak et al. (2004)
2003gd	IIP	Yes/Yes	Sugerman et al. (2006); Meikle et al. (2007)
2004dj	IIP	Yes/Yes	Kotak et al. (2005, 2006); Szalai et al. (2011)
2004et	IIP	Yes/Yes	Kotak et al. (2009); Maguire et al. (2010)
2005af	IIP	No/No	Kotak et al. (2006)
2005kd	IIIn	No/No	Tsvetkov (2008)
2005ip	IIIn	No/No	Fox et al. (2009); Smith et al. (2009c)
2006gy	IIIn	No/No	Smith et al. (2009a)
2006jc	Ib	No/No	Smith et al. (2008b)
2006tf	IIIn	No/No	Smith et al. (2008a)
2007it	IIP	Yes/Yes	Andrews et al. (2011)
2007od	IIP	No/No	Andrews et al. (2010)
2007rt	IIIn	No/No	Trundle et al. (2009)
2008S	IIIn	No/No	Botticella et al. (2009)
2008iy	IIIn	No/No	Miller et al. (2010b)



\*Grey highlights SNe Type IIn. Representing *less* than 10% of all core-collapse events, this subclass comprises *more* than 50% of the rare sample of SNe observed to exhibit a late-time (>100 days) infrared (IR) excess with respect to the optical blackbody counterpart.

Table 2. *Spitzer* Survey Targets

SN	JD (−2,450,000)	Epoch (days)	$\alpha$ (J2000)	$\delta$ (J2000)	Distance (Mpc)	$t_{\text{int}}$ (s)
1997ab	5140	5018	09:51:00.40	+20:04:24.0	50	300
1999Z	5065	4104	10:22:37.23	+27:21:19.8	210	1800
1999eb	5170	3612	01:43:45.45	+04:13:25.9	75	300
2000P	5322	3450	13:07:10.53	−28:14:02.5	31	300
2000cl	5063	3631	10:37:16.07	−41:37:47.8	38	300
2000ct	5066	3335	17:01:03.64	+33:28:45.0	124	300
2000eo	5068	3247	03:09:08.17	−10:17:55.3	44	300
2000ev	5174	3264	06:47:52.00	+84:10:02.2	61	300
2001I	5322	3180	03:43:57.28	+39:17:39.4	68	300
2001ey	5074	3002	22:26:30.77	−06:23:28.6	105	300
2001fa	5065	2872	01:48:22.22	+11:31:34.4	71	300
2001ir	5209	2937	08:36:28.12	−11:50:03.5	81	300
2002A	5075	2864	07:22:36.14	+71:35:41.5	40	300
2002bj	5209	2784	05:11:46.41	−15:08:10.8	50	300
2002bv	5146	2796	07:50:01.13	+30:01:32.2	115	300
2002cb	5186	2950	13:04:23.97	+47:35:53.2	123	300
2002ea	5118	2584	02:08:25.08	+14:20:52.8	61	300
2002fj	5108	2792	08:40:45.10	−04:07:38.5	60	300
2003as	5078	2455	05:28:45.81	+49:52:59.1	95	300
2003ei	5095	2296	16:28:40.30	+12:46:05.8	110	300
2003hy	5084	2290	21:54:22.72	+15:09:37.8	101	300
2003hy	5084	2290	21:54:22.72	+15:09:37.8	101	300
2003jh	5202	2166	04:16:37.30	−12:23:32.9	122	300
2004F	5151	2067	03:17:53.80	−07:17:43.0	73	300
2004ay	5065	1977	18:28:57.57	+51:38:55.7	133	300
2004ec	5322	1825	17:08:04.96	+26:22:44.4	171	900
2004gd	5113	1835	07:09:11.71	+20:36:10.6	72	300
2005R	5075	1938	11:14:56.81	+33:49:35.7	151	600
2005aq	5135	1671	04:31:38.82	−04:35:06.8	56	300
2005av	5066	1657	20:44:37.58	−68:45:10.6	43	300

Table 2—Continued

SN	JD (−2,450,000)	Epoch (days)	$\alpha$ (J2000)	$\delta$ (J2000)	Distance (Mpc)	$t_{\text{int}}$ (s)
2005bx	5065	1711	13:50:24.95	+68:33:19.4	132	300
2005cl	5084	1635	21:02:02.35	−06:17:35.7	107	300
2005cp	5066	1523	23:59:30.88	+18:12:09.6	91	300
2005cy	5066	1498	18:26:49.11	+51:08:30.4	138	300
2005db	5111	1495	00:41:26.79	+25:29:51.6	62	300
2005dr	5108	1476	05:02:17.18	+07:38:21.4	157	600
2005ds	5322	1470	17:57:39.89	+27:50:18.4	97	300
2005ep	5151	1421	16:56:35.49	+58:01:30.2	121	300
2005gl	5072	1417	00:49:50.02	+32:16:56.8	65	300
2005gn	5065	1479	05:48:49.07	−24:22:45.5	165	600
2005ly	5108	1349	01:23:28.84	+30:46:45.7	143	600
2005ma	5187	1384	04:49:53.91	−10:45:23.4	62	300
2006aa	5075	1547	11:53:19.89	+20:45:18.2	85	300
2006am	5139	1276	14:27:37.24	+41:15:35.4	37	300
2006bo	5322	1320	20:30:41.90	+09:11:40.8	63	300
2006bv	5077	1348	12:41:01.55	+63:31:11.6	35	300
2006cu	5322	1181	14:47:43.31	+09:39:33.9	119	300
2006cy	5159	1426	13:08:01.23	+26:06:59.0	150	600
2006dc	5118	1179	16:16:04.04	−22:37:16.7	107	300
2006eh	5140	1127	02:50:11.95	+47:03:20.5	114	300
2006fp	5200	1082	22:45:41.13	+73:09:47.8	21	300
2006gy	5073	1111	03:17:27.06	+41:24:19.5	76	300
2006jd	5201	1149	08:02:07.43	+00:48:31.5	77	300
2006qq	5108	1048	05:19:50.43	−20:58:06.4	119	300
2007K	5081	1069	09:14:26.21	+36:06:52.4	90	300
2007ak	5322	965	05:20:40.75	+08:48:16.0	66	300
2007bb	5062	953	07:01:07.46	+51:15:57.3	86	300
2007cm	5066	964	12:42:45.18	+55:08:57.1	66	300
2007pk	5322	660	01:31:47.07	+33:36:54.1	69	300
2007rt	5203	780	11:02:34.29	+50:34:58.5	93	300

Table 2—Continued

SN	JD (−2,450,000)	Epoch (days)	$\alpha$ (J2000)	$\delta$ (J2000)	Distance (Mpc)	$t_{\text{int}}$ (s)
2008B	5066	597	15:02:43.65	+23:20:07.8	79	300
2008J	5135	593	02:34:24.20	−10:50:38.5	66	300
2008aj	5322	812	13:33:06.33	+33:08:59.0	102	300
2008be	5066	636	14:27:48.71	+69:41:50.8	123	300
2008cg	5135	474	15:54:15.15	+10:58:25.0	151	600
2008en	5065	386	00:55:13.56	+35:26:26.2	151	600
2008fm	5169	351	23:49:03.51	+26:47:39.3	157	600
2008gm	5199	301	23:14:12.39	−02:46:52.4	49	300
2008ip	5088	490	12:57:50.20	+36:22:33.5	63	300

Table 3. *Spitzer* Survey Detections

SN	Epoch (days)	3.6 $\mu\text{m}^*$ ( $10^{17}$ erg s $^{-1}$ cm $^{-2}$ A $^{-1}$ )	4.5 $\mu\text{m}^*$ ( $10^{17}$ erg s $^{-1}$ cm $^{-2}$ A $^{-1}$ )
2005cp	1523	0.58(0.15)	0.45(0.10)
2005gn	1479	0.26(0.10)	0.17(0.06)
2005ip	948	13.30(0.32)	11.20(0.32)
2006jd	1149	4.64(0.40)	4.01(0.30)
2006qq	1048	0.32(0.16)	0.35(0.11)
2007rt	780	3.64(0.35)	2.88(0.25)
2008J	593	5.83(0.42)	4.01(0.28)
2008cg	474	0.69(0.17)	0.52(0.11)
2008en	386	0.70(0.15)	0.50(0.10)
2008gm	301	0.11(0.09)	0.05(0.05)
2008ip	438	0.12(0.08)	0.10(0.05)

\* $1\sigma$  uncertainties are given in parentheses.

Table 4. Summary of Optical Spectra

SN	Epoch (days)	Instrument	Blue Resolution	Red Resolution	Integration (s)
SN 2005cp	10	Lick/Kast	7.7	10.4	900
SN 2006jd	395	Keck/LRIS	6.5	7	900
	564	Keck/LRIS	6.5	5.8	600
SN 2006qq	1	Lick/Kast	6	10.9	1800
	20	Lick/Kast	6.7	10.0	2100
SN 2008J	32	Lick/Kast	4.9	11.9	900
	199	Lick/Kast	6	11	900
	224	Lick/Kast	6.7	12.3	900
	236	Lick/Kast	7.4	12.3	1200
	251	Lick/Kast	4.6	11.0	1200
	266	Lick/Kast	4.4	11.0	1200
	313	Lick/Kast	4.8	5	1200
SN 2008cg	3	Lick/Kast	5.3	11.6	1800
	10	Lick/Kast	5.5	11.7	1800
	55	Lick/Kast	5.9	10.8	1500
	63	Lick/Kast	6	11.3	1500
	114	Keck/LRIS	4.5	7	454
SN 2008en	5	Lick/Kast	6.7	12.5	1800
SN 2008gm	5	Keck/LRIS	6.5	7	400

Table 5. Summary of Keck/LRIS Optical Photometry

SN	Epoch (days)	$B$ (mag)	$R$ (mag)	$I$ (mag)	Luminosity ( $\log(L_{\text{opt}}/L_{\odot})$ )
SN 2006jd	1609	$25.0 \pm 0.5$	$20.3 \pm 0.5$	$22.5 \pm 0.5$	$7.6 \pm 0.4$
SN 2007rt	1223	$>25$	$>24$	$>24$	$<6.1$

Table 6. *Spitzer* Fitting Parameters

$a$ ( $\mu\text{m}$ )	$T_d$ (K)	Graphites		$T_d$ (K)	Silicates		$T_d$ (K)	Blackbody	
		$M_d$ ( $M_\odot$ )	$L_d$ ( $L_\odot$ )		$M_d$ ( $M_\odot$ )	$L_d$ ( $L_\odot$ )		$M_d$ ( $M_\odot$ )	$L_d$ ( $L_\odot$ )
<b>SN 2005cp</b>									
0.01	575	7.39e-3	5.65e+7	648	1.51e-2	2.06e+8	710	9.09e-6	6.86e+7
0.10	554	6.81e-3	5.63e+7	643	1.55e-2	2.07e+8	710	9.08e-5	6.85e+7
0.30	580	1.79e-3	5.15e+7	614	1.78e-2	2.13e+8	710	2.70e-4	6.79e+7
<b>SN 2005gn</b>									
0.01	776	2.06e-3	8.39e+7	991	3.12e-3	1.72e+8	1220	1.52e-6	1.06e+8
0.10	737	1.92e-3	8.36e+7	981	3.18e-3	1.73e+8	1220	1.51e-5	1.06e+8
0.30	735	6.75e-4	7.52e+7	917	3.67e-3	1.75e+8	1220	4.50e-5	1.05e+8
<b>SN 2005ip</b>									
0.01	483.	4.73e-2	1.36e+8	525.	9.12e-2	6.23e+8	567.	5.12e-5	1.49e+8
0.10	468.	4.34e-2	1.35e+8	522.	9.30e-2	6.26e+8	567.	5.11e-4	1.48e+8
0.30	469.	1.46e-2	1.19e+8	503.	1.07e-1	6.50e+8	567.	1.52e-3	1.47e+8
<b>SN 2006jd</b>									
0.01	602.	3.21e-2	3.18e+8	733.	4.90e-2	9.94e+8	836.	2.70e-5	4.03e+8
0.10	579.	2.96e-2	3.17e+8	728.	5.00e-2	1.00e+9	836.	2.70e-4	4.02e+8
0.30	561.	1.13e-2	2.65e+8	692.	5.76e-2	1.02e+9	836.	8.01e-4	3.98e+8
<b>SN 2006qq</b>									
0.01	518	1.71e-2	7.30e+7	601	2.75e-2	2.94e+8	672	1.45e-5	8.68e+7
0.10	501	1.58e-2	7.27e+7	598	2.79e-2	2.95e+8	672	1.45e-4	8.66e+7
0.30	500	5.54e-3	6.66e+7	575	3.16e-2	3.03e+8	672	4.30e-4	8.58e+7
<b>SN 2007rt</b>									
0.01	653	2.39e-2	3.71e+8	793	3.76e-2	9.84e+8	926	1.92e-5	4.37e+8
0.10	625	2.22e-2	3.70e+8	787	3.83e-2	9.87e+8	926	1.92e-4	4.36e+8
0.30	624	7.79e-3	3.41e+8	747	4.37e-2	1.00e+9	926	5.70e-4	4.32e+8
<b>SN 2008J</b>									
0.01	739	9.41e-3	2.92e+8	930	1.44e-2	6.37e+8	1125	7.13e-6	3.58e+8
0.10	704	8.73e-3	2.91e+8	921	1.47e-2	6.40e+8	1125	7.12e-5	3.58e+8
0.30	702	3.07e-3	2.64e+8	865	1.69e-2	6.48e+8	1125	2.12e-4	3.54e+8
<b>SN 2008cg</b>									
0.01	629	1.43e-2	1.80e+8	716	2.93e-2	5.52e+8	975	7.70e-6	2.17e+8
0.10	604	1.32e-2	1.79e+8	710	3.02e-2	5.57e+8	975	7.69e-5	2.16e+8
0.30	635	3.43e-3	1.67e+8	675	3.48e-2	5.70e+8	975	2.28e-4	2.14e+8
<b>SN 2008en</b>									
0.01	714	7.23e-3	1.84e+8	888	1.11e-2	4.23e+8	1062	5.58e-6	2.23e+8
0.10	681	6.70e-3	1.84e+8	881	1.14e-2	4.25e+8	1062	5.57e-5	2.22e+8

Table 6—Continued

$a$ ( $\mu\text{m}$ )	Graphites			Silicates			Blackbody		
	$T_d$ (K)	$M_d$ ( $M_\odot$ )	$L_d$ ( $L_\odot$ )	$T_d$ (K)	$M_d$ ( $M_\odot$ )	$L_d$ ( $L_\odot$ )	$T_d$ (K)	$M_d$ ( $M_\odot$ )	$L_d$ ( $L_\odot$ )
0.30	679	2.36e-3	1.68e+8	829	1.30e-2	4.31e+8	1062	1.66e-4	2.20e+8
<b>SN 2008gm</b>									
0.01	757	7.00e-5	2.47e+6	890	1.40e-4	5.36e+6	1013	8.31e-8	2.73e+6
0.10	721	6.47e-5	2.46e+6	880	1.45e-4	5.39e+6	1013	8.29e-7	2.73e+6
0.30	766	1.69e-5	2.36e+6	827	1.68e-4	5.48e+6	1013	2.46e-6	2.70e+6
<b>SN 2008ip</b>									
0.01	634	4.52e-4	5.93e+6	765	7.12e-4	1.66e+7	886	3.66e-7	6.96e+6
0.10	608	4.18e-4	5.91e+6	759	7.25e-4	1.66e+7	886	3.66e-6	6.95e+6
0.30	606	1.47e-4	5.46e+6	721	8.27e-4	1.69e+7	886	1.09e-5	6.88e+6

Table 7. Blackbody, Shock, and Plateau Radii

SN	Epoch (days)	$r_{\text{bb}}$ (ly)	$r_{\text{s}2}(2500 \text{ km s}^{-1})$ (ly)	$r_{\text{s}1}(15,000 \text{ km s}^{-1})$ (ly)	$r_{\text{p}}$ (ly)
2005cp	1523	0.038	0.033	0.20	2.1
2005gn	1479	0.016	0.032	0.19	2.0
2005ip	948	0.031	0.020	0.12	1.3
2006jd	1149	0.067	0.025	0.15	1.6
2006qq	1048	0.048	0.022	0.14	1.4
2007rt	780	0.057	0.017	0.10	1.1
2008J	593	0.035	0.013	0.077	0.81
2008cg	474	0.036	0.010	0.061	0.65
2008en	386	0.031	0.008	0.050	0.53
2008gm	301	0.004	0.007	0.039	0.41
2008ip	438	0.008	0.010	0.057	0.60



Table 8. Predicted Dust Masses From Shock Heating ( $v=15,000 \text{ km s}^{-1}$ ) vs. Observed

SN	Predicted $M_d (M_\odot)$	Graphites	Silicates
		Observed $M_d (M_\odot)$	Observed $M_d (M_\odot)$
2005cp	4.9e-3	6.8e-3	1.6e-2
2005gn	4.6e-3	1.9e-3	3.2e-3
2005ip	1.9e-3	4.3e-2	9.3e-2
2006jd	2.8e-3	3.0e-2	5.0e-2
2006qq	2.3e-3	1.6e-2	2.8e-2
2007rt	1.3e-3	2.2e-2	3.8e-2
2008J	7.4e-4	8.7e-3	1.5e-2
2008cg	4.7e-4	1.3e-2	3.0e-2
2008en	3.1e-4	6.7e-3	1.1e-2
2008gm	1.9e-4	6.5e-5	1.4e-4
2008ip	4.0e-4	4.2e-4	7.3e-4

Table 9. Mass Loss Associated with Radiatively Heated Graphite Dust Shell

SN	$\dot{M} \times (10\Delta r)/r$ ( $M_\odot \text{ yr}^{-1}$ )	$t_{\text{eruption}}$ (yr)
2005cp	2.2e-3	30
2005gn	7.5e-4	25
2005ip	1.8e-3	235
2006jd	2.8e-3	106
2006qq	9.2e-3	17
2007rt	1.2e-3	181
2008J	1.6e-3	55
2008cg	2.3e-3	57
2008en	1.4e-3	49
2008gm	1.6e-4	4
2008ip	3.3e-4	13

Table 10. Evidence for Dust Origin and Heating Mechanism

SN	Newly Formed?	Shock Heating?	IR Echo?	Shock Echo?
2005cp	no	maybe	no	yes
2005gn	no	maybe	no	maybe
2005ip	yes	no	no	yes
2006jd	no	no	no	maybe
2006qq	no	no	no	yes
2007rt	yes <sup>7</sup>	no	no	maybe
2008J	maybe	maybe	no	maybe
2008cg	yes	no	no	yes
2008en	no	maybe	no	yes
2008gm	no	yes	no	yes
2008ip	no	yes	no	yes

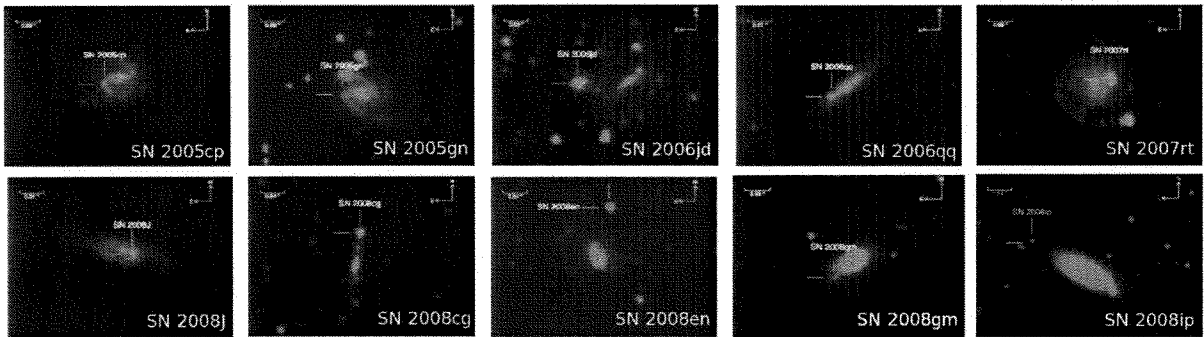


Fig. 1.— False-color  $3.6 \mu\text{m}$  and  $4.5 \mu\text{m}$  combined *Spitzer*/IRAC images of the 10 SNe II discovered by our survey (P60122) to exhibit late-time mid-IR emission.

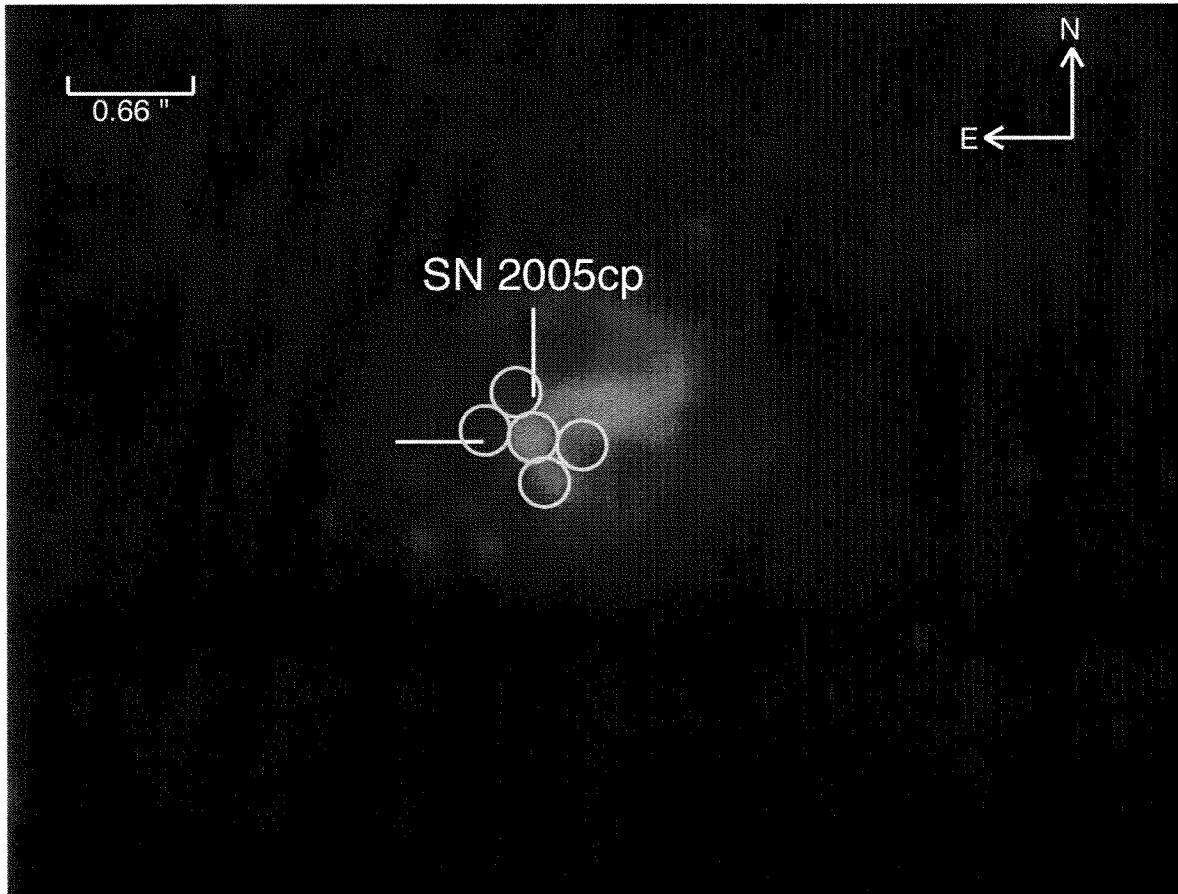


Fig. 2.— Illustration of the aperture-photometry routine implemented instead of DAOPHOT and APPHOT (which utilizes both an inner aperture and outer annulus). A single aperture, identified by the green circles, extracts the flux from both the SN and a user-selected background. This technique allows the user to visually identify and extract local background representative of the underlying SN flux. Nearby stellar and nuclear flux can be ignored.

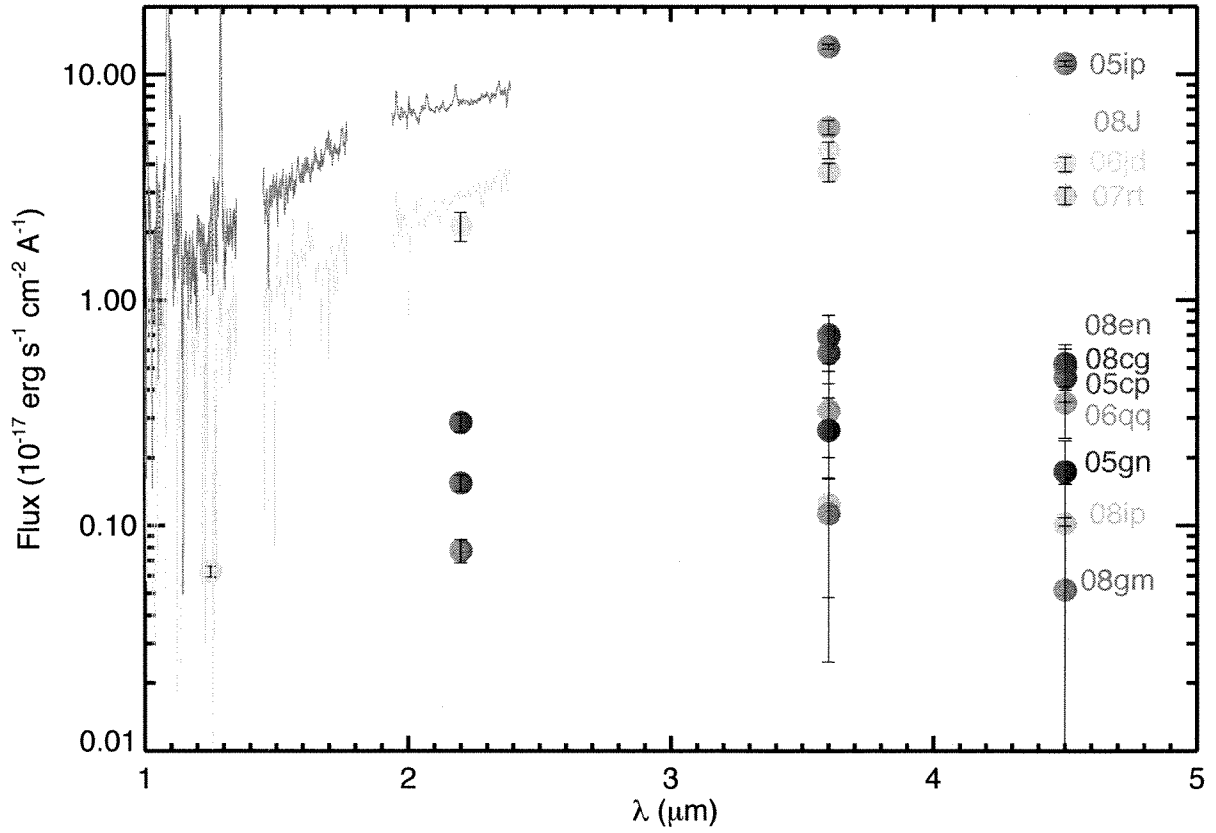


Fig. 3.— Photometry of the SNe detected by *Spitzer*/IRAC bands 1 ( $3.6 \mu\text{m}$ ) and 2 ( $4.5 \mu\text{m}$ ), as well as near-IR photometry obtained by Magellan/PANIC. Overplotted are the APO/TripleSpec near-IR spectra of SN 2006jd and SN 2005ip.

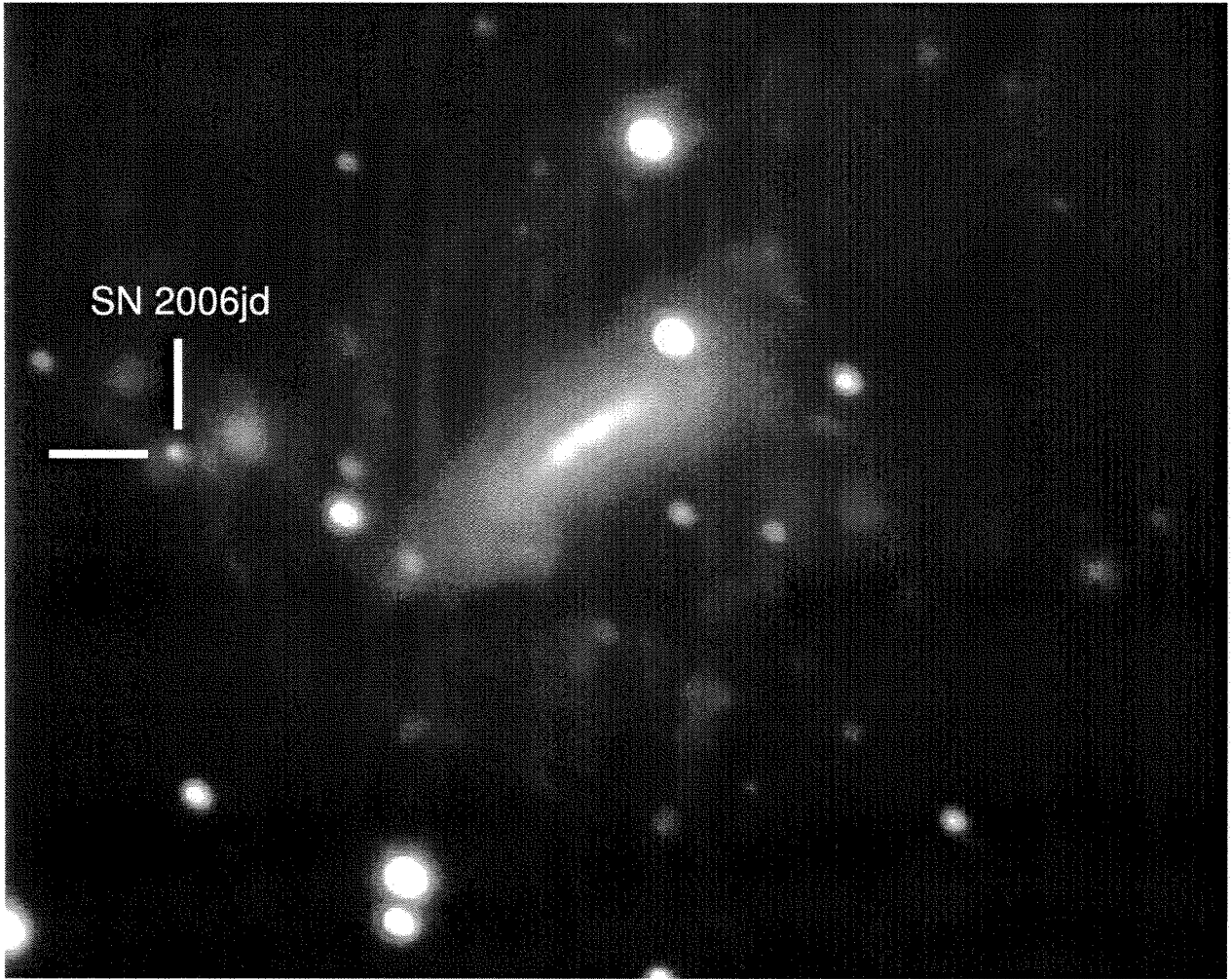
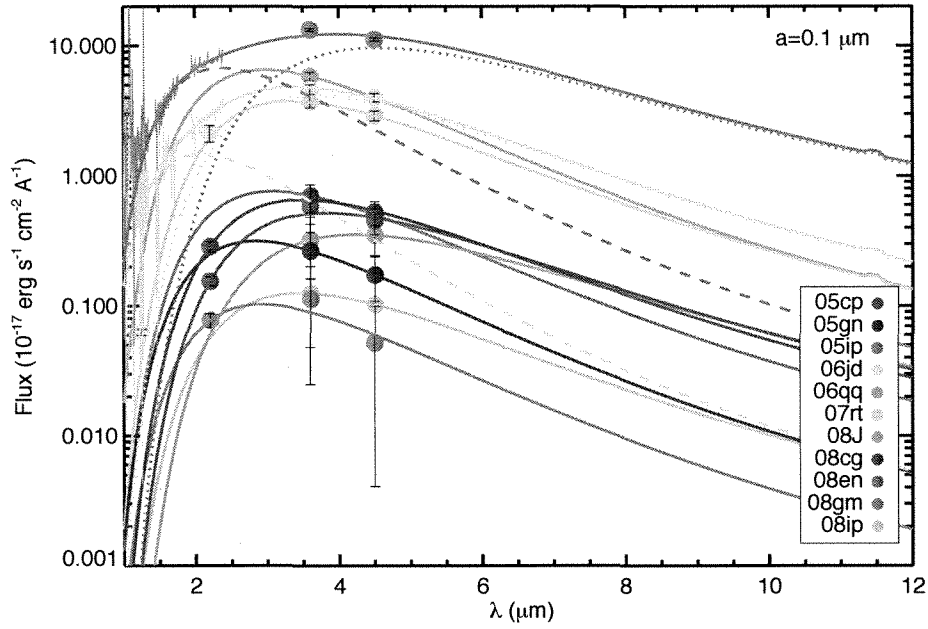
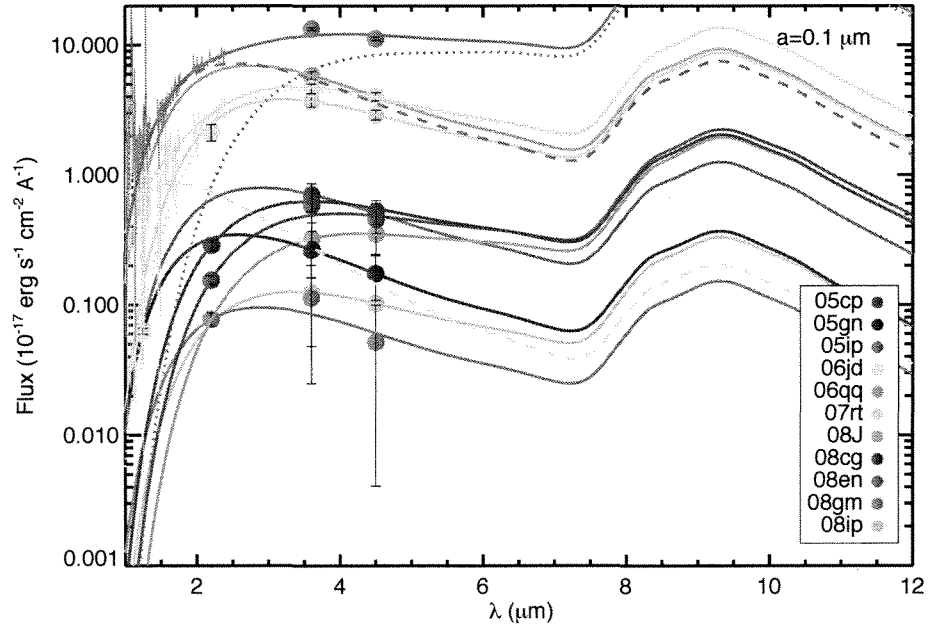


Fig. 4.— False-color *BRI* combined Keck/LRIS images of SN 2006jd on day 1609 post-detection. The SN remains bright at optical wavelengths nearly 4.5 years after the explosion.



(a) Graphite



(b) Silicate

Fig. 5.— Best fits of Equation 1 (both graphite and silicate compositions) to the combined near-IR and mid-IR data. A warm ( $\sim 400\text{--}600$  K) dust component fits most observations well. SNe 2006jd and 2005ip (those with near-IR spectra) are better fit by a multi-component model, where a second, hotter component dominates the near-IR flux. The most obvious feature differentiating between the graphite and silicate models is the  $9\ \mu\text{m}$  silicate emission feature. The warm IRAC data do not extend beyond  $\sim 5\ \mu\text{m}$ , limiting any distinction between the two compositions.

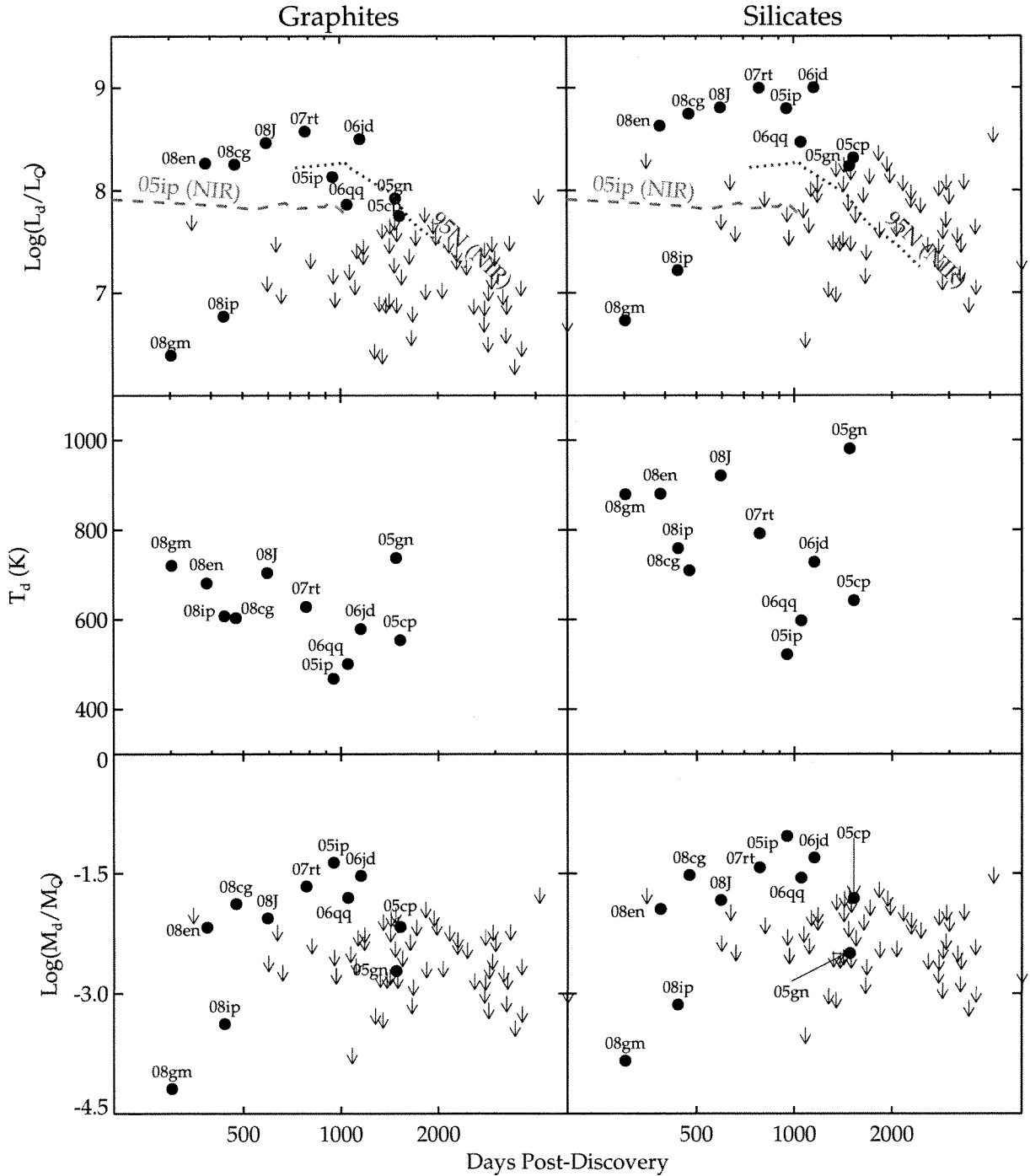


Fig. 6.— The temperature, mass, and IR luminosity of the observed late-time dust component of each SN, as listed in Table 6 for  $a = 0.1 \mu\text{m}$  grains of both compositions. Downward arrows indicate upper limits. Also plotted is the near-IR evolution of the Type IIIn SNe 2005ip (Fox et al. 2009) and 1995N (Gerardy et al. 2002). The number of SNe that exhibit late-time IR emission drops dramatically after  $\sim 1000$  days, and the trend appears to closely follow the observed decline of SN 1995N. Generally, the dust masses are  $M_d > 10^{-3} M_\odot$ , and many are even  $M_d > 10^{-2} M_\odot$ . Ultimately, these variables can be used to disentangle the composition, origin, and heating mechanism of the dust (see §3). As discussed in §4, many



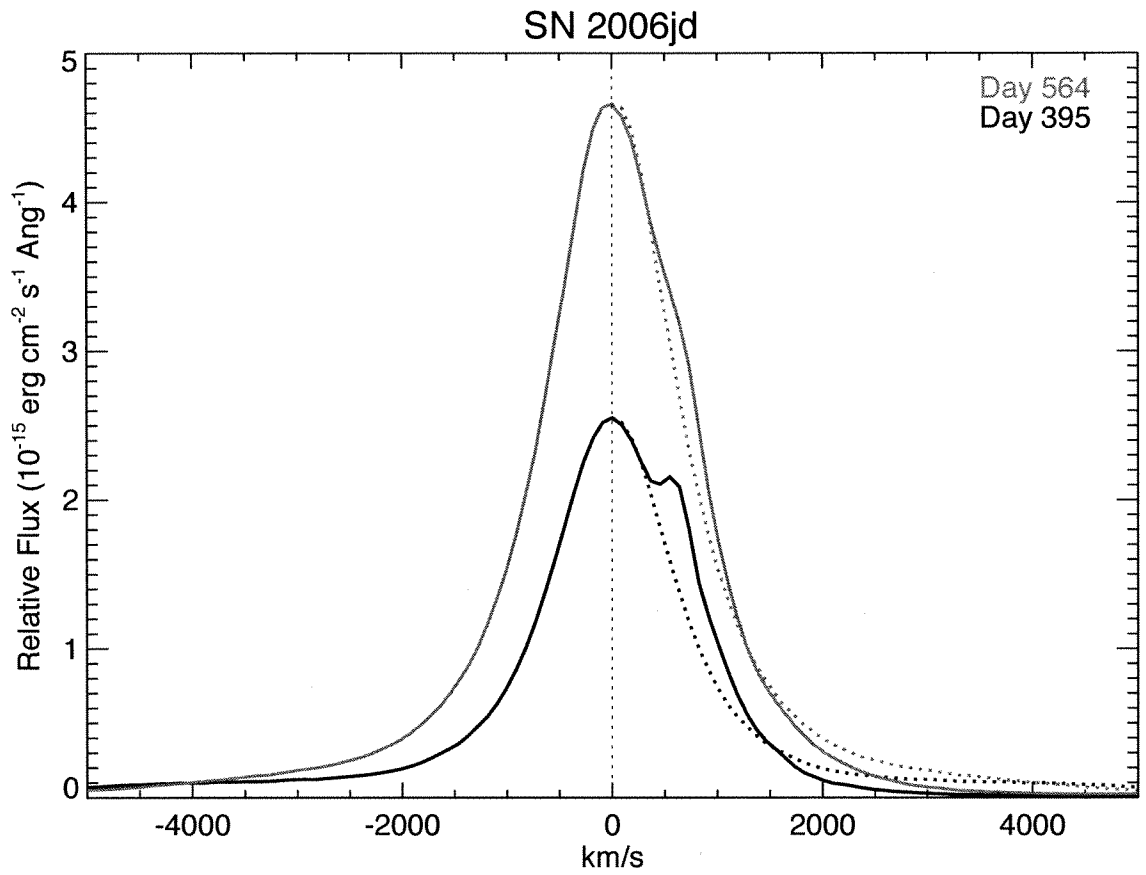


Fig. 7.—  $\text{H}\alpha$  line from optical spectra of SN 2006jd at late-times. These spectra show no evidence of absorption. In fact, it exhibits an excess likely due to the  $[\text{N II}] \lambda 6583$  line.

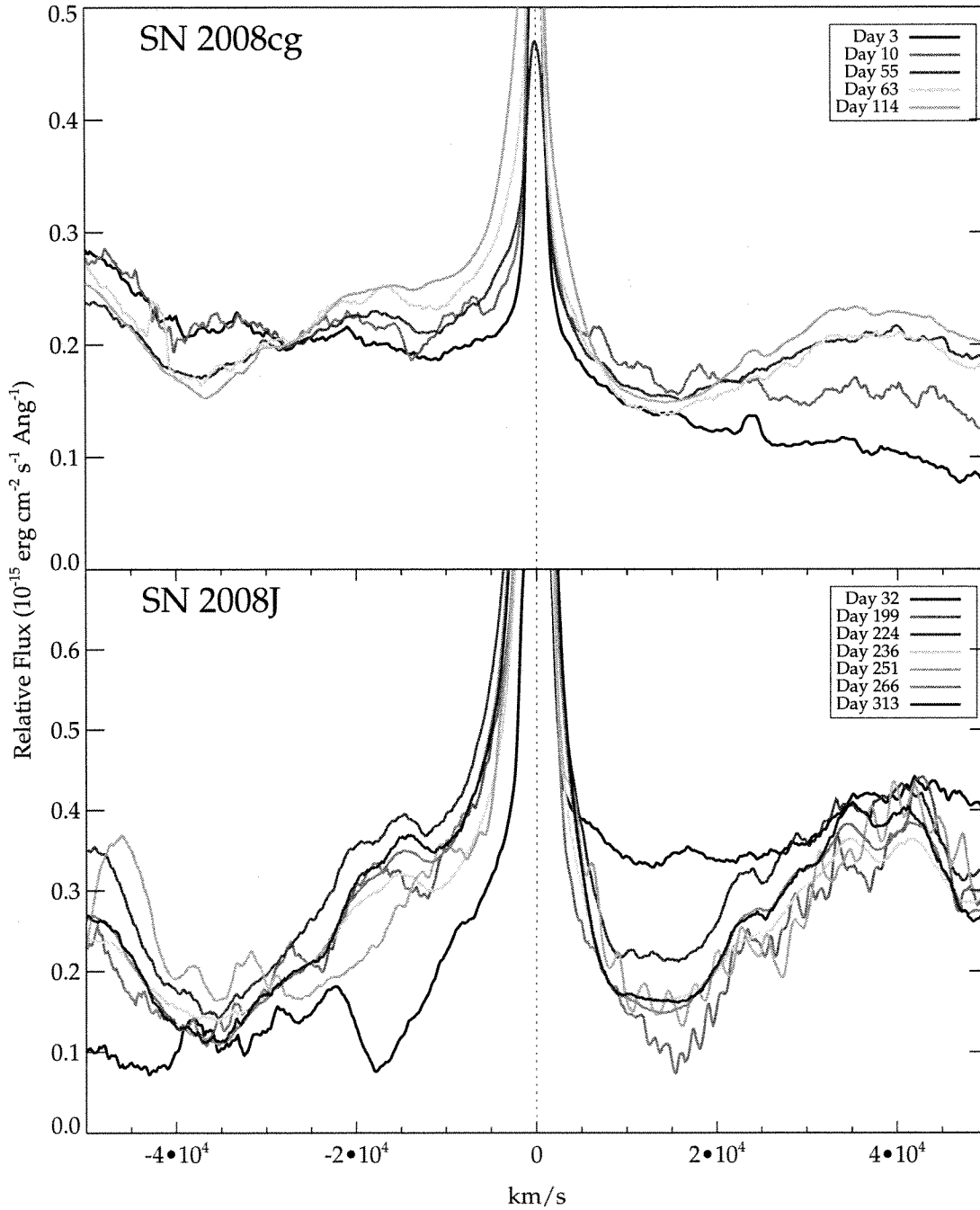


Fig. 8.— Spectroscopic evolution of the broad component of the  $H\alpha$  line in SNe 2008cg and 2008J. It shows increased suppression of the red wing relative to the blue wing with time, especially in SN 2008cg, which offers clear evidence of new dust formation in the rapidly expanding ejecta.

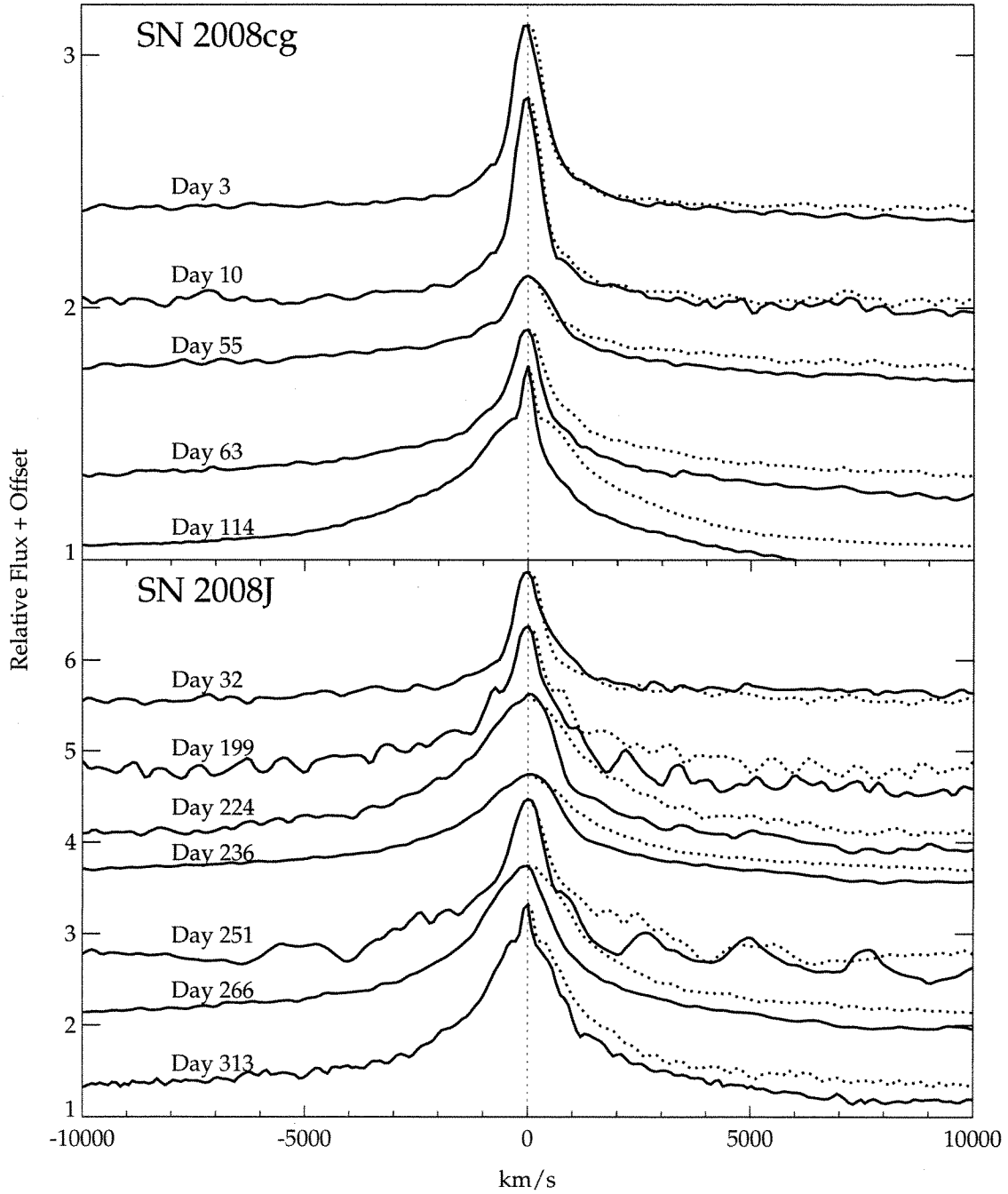
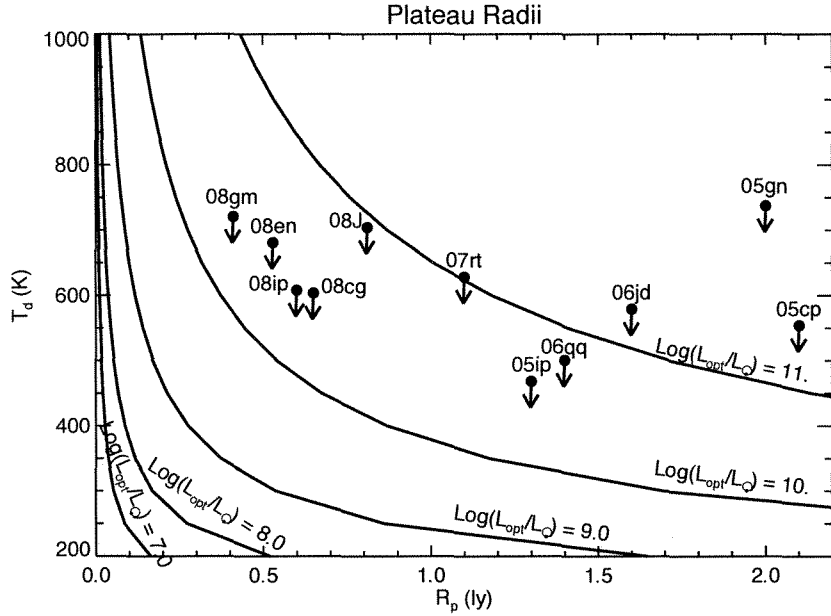
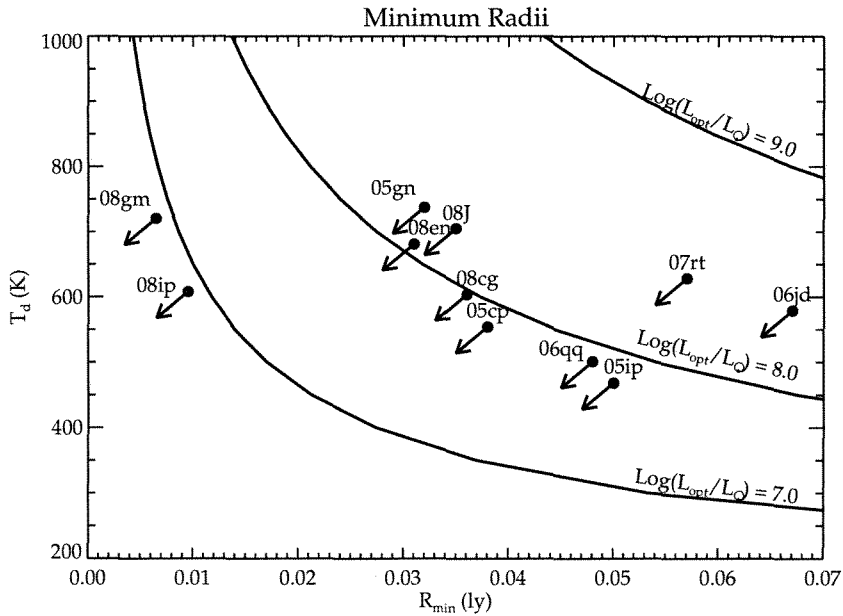


Fig. 9.— Spectroscopic evolution of the intermediate component of the  $H\alpha$  line in SNe 2008cg and 2008J, showing increased suppression of the red side relative to the blue side with time. The simultaneous absorption in the broad component (Figure 8), however, suggests that the dust forms in the ejecta.



(a) Infrared Echo for  $r = r_p > r_{\text{evap}}$



(b) Continuous Radiative Heating of Dust Shell for  $r_{\text{evap}} \leq r_{\text{min}} < r_p$

Fig. 10.— Testing the possibility of radiative heating of a pre-existing dust shell (only graphites are considered here). In case (a), the dust shell lies at the plateau radius  $r_p$ , defined by the observed light-curve duration, and is heated by the peak SN luminosity, which is typically in the range  $10^9 \leq L_{\text{opt}} < 10^{10} L_{\odot}$ . Overplotted are the observed dust temperatures and radii. The required luminosities to heat the dust are too high. In case (b), the dust lies at a radius  $r_{\text{min}} = \text{MAX}(r_{\text{bb}}, r_{s2})$ , and is heated by optical emission generated by continuous circumstellar interaction, typically observed to be  $10^7 \leq L_{\text{opt}} \leq 10^8 L_{\odot}$ . Aside from a few caveats, the observed temperatures are consistent with the expected values given by the contours.