

A Survey of PCN-Based Admission Control and Flow Termination

Michael Menth, Frank Lehrieder, Bob Briscoe, Philip Eardley, Toby Moncaster, Jozef Babiarz, Anna Charny, Xinyang (Joy) Zhang, Tom Taylor, Kwok-Ho Chan, Daisuke Satoh, Ruediger Geib, and Georgios Karagiannis

Abstract—Pre-congestion notification (PCN) provides feedback about load conditions in a network to its boundary nodes. The PCN working group of the IETF discusses the use of PCN to implement admission control (AC) and flow termination (FT) for prioritized realtime traffic in a DiffServ domain. Admission control (AC) is a well-known flow control function that blocks admission requests of new flows when they need to be carried over a link whose admitted PCN rate already exceeds an admissible rate. Flow termination (FT) is a new flow control function that terminates some already admitted flows when they are carried over a link whose admitted PCN rate exceeds a supportable rate. The latter condition can occur in spite of AC, e.g., when traffic is rerouted due to network failures.

This survey gives an introduction to PCN and is a primer for this new technology. It presents and discusses the multitude of architectural design options in an early stage of the standardization process in a comprehensive and streamlined way before only a subset of them is standardized by the IETF. It brings PCN from the IETF to the research community and serves as historical record.

Index Terms—Quality of service, admission control, flow termination, congestion notification, token bucket.

I. INTRODUCTION

IP NETWORKS were initially designed to perform packet forwarding without priorities. To achieve quality of service (QoS), the differentiated services (DS, DiffServ) concept introduced various service classes called per-hop behaviors (PHBs) [10]. To avoid congestion for premium traffic in a network, admission control (AC) limits the number of high-priority flows. It is a well-established flow control function for packet-switched communication networks supporting high-quality realtime applications such as voice and video. It is

Manuscript received 14 October 2008; revised 3 April 2009. This work is funded by Deutsche Forschungsgemeinschaft (DFG) under grant TR257/18-2; by Trilogy, a research project supported by the European Community under its Seventh Framework Programme; and by the National Institute of Information and Communications Technology (NICT), Tokyo, Japan. It reflects only the views of the author.

Michael Menth and Frank Lehrieder are with the University of Würzburg, Inst. of Computer Science, Germany (e-mail: menth@informatik.uni-wuerzburg.de).

Bob Briscoe, Philip Eardley, and Toby Moncaster are with BT Research, UK.

Jozef Babiarz is with Nortel Networks, Ottawa, Canada.

Anna Charny and Xinyang (Joy) Zhang are with Cisco Systems, Boxborough, MA.

Tom Taylor and Kwok-Ho Chan are with Huawei Technologies, Canada/USA.

Daisuke Satoh is with NTT Advanced Technology Corporation, Japan.

Ruediger Geib is with Deutsche Telekom Netzproduktion GmbH, Germany.

Georgios Karagiannis is with the University of Twente/CTIT, The Netherlands.

Digital Object Identifier 10.1109/SURV.2010.040710.00078

useful when capacity overprovisioning is difficult, too costly, or just not possible. The resource reservation protocol RSVP [11] supports admission control with per-flow reservations in each RSVP-aware node. This is a rather heavy burden for transit routers that need to keep per-flow states just to perform correct AC decisions.

AC is not enough to keep the traffic load in a DiffServ domain low. When links or nodes fail, traffic is rerouted which possibly leads to congestion on backup paths. This degrades the QoS for all flows on the congested links. In such a case, the traffic load should be quickly reduced by terminating some of the admitted flows. This is achieved by a new flow control function which is called flow termination (FT). It complements AC and is useful not only in failure cases but also in other cases of overload which might be caused, e.g., by flash crowds [4], [20], [33] or unexpected rate increases of admitted flows.

The Internet Engineering Task Force (IETF) currently standardizes simple, robust, and scalable AC and FT mechanisms for DiffServ domains based on pre-congestion notification (PCN) [24]. A new prioritized traffic class for admitted PCN traffic is defined. The rate of aggregate PCN traffic is metered on all links of a DiffServ domain and packets are appropriately marked when certain rate thresholds (admissible rate, supportable rate) are exceeded. Thereby, the PCN egress nodes are notified about load conditions inside the network before congestion occurs. This information is used to perform the AC and FT decisions.

For the time being, several partly incompatible and competing proposals for PCN-based AC and FT exist. However, the objective of the standardization process is to define only one or two mechanisms to achieve compatibility among vendors. This paper develops an integrated overview of methods for metering and marking, PCN encoding, AC, and FT that have been presented in different proposals. To that end, a unifying nomenclature is developed. This presentation on the level of individual concepts and features instead of packaged deployment scenarios facilitates an objective discussion of pros and cons and deepens the understanding of PCN and its associated algorithms. Thereby, it is a step forward concerning the standardization of a future PCN architecture. Moreover, the paper preserves the wealth of diverse ideas for PCN-based AC and FT beyond standardization.

The paper is structured as follows. Sect. II reviews the historic roots of PCN and related work. Sect. III introduces different types of pre-congestion, explains the basic idea of PCN, and illustrates its use in the Internet. Sect. IV presents

metering and marking algorithms and Sect. V discusses how PCN marks can be encoded into the current IPv4 header. Sect. VI and Sect. VII review various AC and FT methods. Existing proposals are reviewed by Sect. VIII. Finally, Sect. IX summarizes this work.

II. HISTORIC ROOTS OF PCN AND RELATED WORK

We review related work regarding random early detection (RED), explicit congestion notification (ECN), and stateless core concepts for AC as they can be viewed as historic roots of PCN.

A. Random Early Detection (RED)

RED was originally presented in [27], and in [12] it was recommended for deployment in the Internet. It was intended to detect incipient congestion on a link and to throttle only some TCP flows early to avoid severe congestion and to improve the TCP throughput. RED measures the average buffer occupation *avg* in routers and packets are dropped or marked with a probability that increases linearly with the average queue length *avg*. Thus, a few packets are dropped before buffer overflow occurs which possibly leads to early rate reduction of some TCP flows prior to severe overload. An overview of RED and related mechanisms can be found in [62].

B. Explicit Congestion Notification

Explicit congestion notification (ECN) is built on the idea of RED to signal incipient congestion to TCP senders in order to reduce their sending window [60]. Packets of non-ECN-capable flows can be differentiated by a “not-ECN-capable transport” codepoint (not-ECT, ‘00’) from packets of an ECN-capable flow which have an “ECN-capable transport” codepoint (ECT). In case of incipient congestion, RED gateways possibly drop not-ECT packets while they just switch the codepoint of ECT packets to “congestion experienced” (CE, ‘11’) instead of discarding them. This improves the TCP throughput since packet retransmission is no longer needed in this case. Both the ECN encoding in the packet header and the behavior of ECN-capable senders and receivers after the reception of a marked packet is defined in [60]. ECN comes with two different codepoints for ECT: ECT(0) (‘10’) and ECT(1) (‘01’). They serve as nonces to detect cheating network equipment or receivers [68] that do not conform to the ECN semantics. The four codepoints are encoded in the (“currently unused”) bits of the DS field in the IP header which is a redefinition of the type of service octet [56]. The ECN bits can be redefined by other protocols and [26] provides guidelines for that. They are likely to be reused for encoding of PCN marks.

C. Admission Control

Recent surveys and classifications of AC methods can be found in [1], [39], [41], [66], [72]. We explain the problem with per-flow reservations, reservation aggregation to mitigate that problem, and show which problems still remain. We briefly review some specific AC methods that can be seen

as forerunners of the PCN principle. They measure the rate of admitted traffic on each link of a network and give feedback to the network boundary if that rate exceeds a pre-configured admissible rate threshold. Thereby, no per-flow reservations need to be kept for a link and the network core remains stateless. This is a key property of PCN-based AC.

1) *Aggregation of Per-Flow Reservations*: Admission control can be performed in the Internet using the resource reservation protocol RSVP [11]. It sets up per-flow states in any node along the path which leads to a large number of states on links carrying many flows. The setup and maintenance of these states is a large burden for routers and makes them more complex. RSVP aggregation [7] improves this scalability concern by setting up tunnels so that individual flows need to be handled only at the edge nodes of the network. However, an n^2 scalability problem of aggregated tunnels still remains when n boundary nodes set up overlay reservations for premium communication. Forecasts predict that the average number of flows of typical edge-to-edge premium service tunnels is very low and their distribution is long-tailed [23]. As a consequence, the majority of aggregated reservations do not carry traffic most of the time but need to be supported by core nodes. Thus, other simple solutions for AC with better scaling properties in core routers are needed. PCN requires neither per-flow nor per-tunnel information in transit nodes.

2) *Admission Control Based on Reservation Tickets*: To keep a reservation for a flow across a network alive, ingress routers send reservation tickets in regular intervals to the egress routers. Intermediate routers measure the rate of the observed tickets and can thereby estimate the expected load of reserved traffic. In case of a new reservation request, the ingress router sends probe tickets, intermediate routers forward them to the egress router if they have still enough capacity to support the new flow, and the egress router bounces them back to the ingress router to indicate a successful reservation. If intermediate routers do not have enough resources to carry another flow, they discard the probe tickets, the ingress router does not receive a positive response, and the reservation request is blocked. The tickets can also be encoded by a packet state. Several stateless core mechanisms work according to this idea [2], [69], [70].

3) *Admission Control Based on Packet Marking*: Gibbens and Kelly [29], [30], [36] theoretically investigated AC based on the feedback of marked packets whereby packets are marked by routers based on a virtual queue with configurable bandwidth. This core idea is adopted by PCN. The important difference to RED-like packet marking is that marking decisions are based on a virtual instead of a physical queue. This allows to limit the utilization of the link bandwidth by premium traffic to arbitrary values between 0 and 100%. Karsten and Schmitt [34], [35] integrated these ideas into the IntServ framework and implemented a prototype. They point out that the marking can also be based on the CPU usage of the routers instead of the link utilization if this turns out to be the limiting resource for packet forwarding. An early version of PCN-based AC has been reported in [67].

4) *Resilient Admission Control*: In resilient networks, rerouting or protection switching deviates traffic in case of a failure to backup paths. Overviews of such techniques can

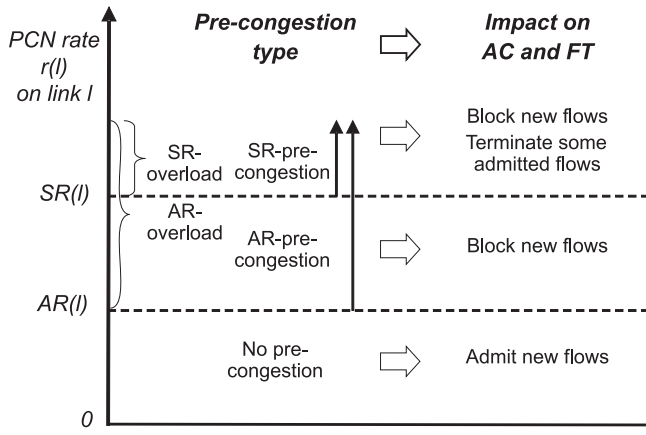


Fig. 1. The admissible and the supportable rate ($AR(l), SR(l)$) define three types of pre-congestion.

be found in [58] and [21]. The objective of resilient AC is to work properly even in case of failures and to avoid termination of already admitted traffic. Transit nodes of a network without reservation states seem to be a prerequisite for resilient AC. In case of a failure, traffic just needs to be rerouted but reservation states do not need to be recovered. Resilient AC admits only so much traffic that it can still be carried after rerouting in a protected failure scenario [46], [53]. It is necessary since overload occurs in wide area networks mostly due to link failures and not due to increased user activity [31]. It can be implemented with PCN by setting the admissible rate thresholds low enough so that admitted traffic is not lost due to rerouting in likely failure scenarios. In particular, the PCN traffic rate on a link after rerouting must be low enough so that flow termination is not triggered. Algorithms to configure PCN-based AC and FT for resilient AC are presented in [45]. It also optimizes IP routing to maximize the rate of admissible traffic for resilient AC.

III. PCN-BASED FLOW CONTROL

This section explains the basic idea of PCN-based admission control (AC) and flow termination (FT) and discusses its application in an edge-to-edge and end-to-end context in the Internet.

A. Pre-Congestion Notification (PCN)

PCN defines a new traffic class that receives preferred treatment by PCN nodes similar to the expedited forwarding per-hop-behavior (EF PHB) in DiffServ [32]. It provides information to support admission control (AC) and flow termination (FT) for this traffic type. PCN introduces an admissible and a supportable rate threshold ($AR(l), SR(l)$) for each link l of the network which imply three different load regimes as illustrated in Fig. 1. If the PCN traffic rate $r(l)$ is below $AR(l)$, there is no pre-congestion and further flows may be admitted. If the PCN traffic rate $r(l)$ is above $AR(l)$, the link is AR-pre-congested and the rate above $AR(l)$ is AR-overload. In this state, no further flows should be admitted. If the PCN traffic rate $r(l)$ is above $SR(l)$, the link is SR-pre-congested and the rate above $SR(l)$ is SR-overload. In this state, some already admitted flows should be terminated to reduce the PCN rate

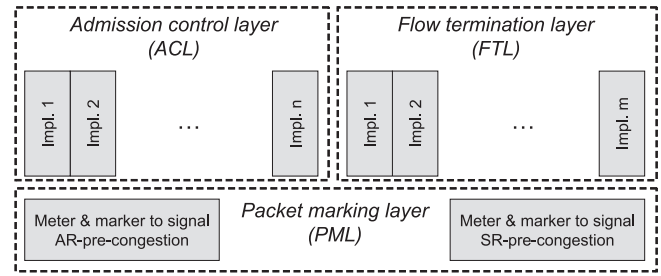


Fig. 2. Packet metering and marking is performed on all interfaces of a PCN domain; the markings are evaluated at the network edges to support AC and FT.

$r(l)$ below $SR(l)$. A path is AR-pre-congested if at least one of its links is AR-pre-congested and it is SR-pre-congested if at least one of its links is SR-pre-congested; otherwise it is not pre-congested.

B. A Two-Level Architecture for PCN-Based AC and FT

PCN-based AC and FT can be described as a two-level architecture which is illustrated in Fig. 2. PCN nodes monitor the PCN rate on their links and mark packets depending on the type of pre-congestion. These mechanisms constitute the packet marking layer (PML). Different proposals exist for the PML, but within a single PCN domain, the same methods need to be implemented in all PCN nodes. PCN egress nodes or PCN endpoints evaluate the packet markings and their essence is reported to the AC and FT entities. Based on this notification, further flows are admitted or blocked and already admitted flows are terminated if necessary. The AC and FT algorithms constitute the admission control and flow termination layer (ACL, FTL). Different implementations of the ACL and FTL may be deployed within a single PCN domain as long as they coexist in a fair way, i.e. block or terminate traffic at the same PCN traffic rate.

C. Edge-to-Edge PCN

Edge-to-edge PCN assumes that some end-to-end signalling protocol (e.g. SIP or RSVP) or a similar mechanism requests admission for a new flow to cross a so-called PCN domain similar to the IntServ-over-DiffServ concept [9]. Thus, edge-to-edge PCN is a per-domain QoS mechanism and presents an alternative to RSVP clouds or extreme capacity overprovisioning. This is illustrated in Fig. 3. Traffic enters the PCN domain only through PCN ingress nodes and leaves it only through PCN egress nodes. Ingress nodes set a special header codepoint to make the packets distinguishable from other traffic and the egress nodes clear the codepoint. The nodes within a PCN domain are PCN nodes. They monitor the PCN traffic rate on their links and possibly remark the traffic in case of AR- or SR-pre-congestion. PCN egress nodes evaluate the markings of the traffic and send a digest to the AC and FT entities of the PCN domain.

D. End-to-End PCN

End-to-end PCN [50] assumes that all links providing QoS support implement PCN metering and marking. The

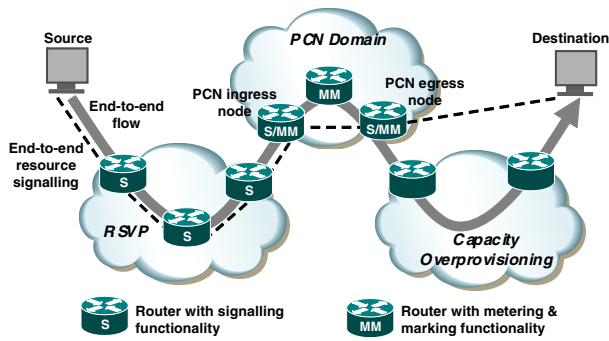


Fig. 3. Edge-to-edge PCN is triggered by admission requests from external signalling protocols and guarantees QoS within a single PCN domain.

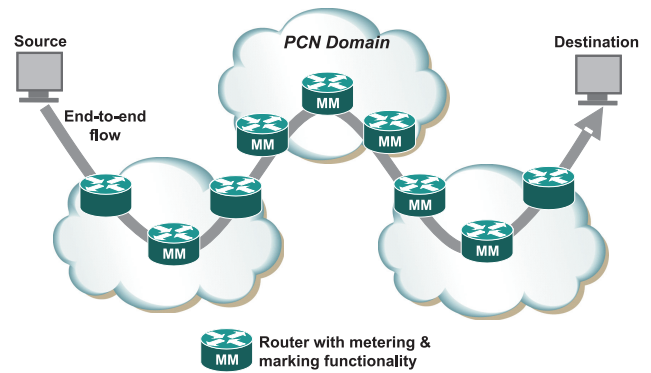


Fig. 4. End-to-end PCN flows transparently traverse edge-to-edge PCN domains and perceive them as islands with only PCN-capable nodes from which they receive preferred treatment.

communication endpoints, i.e. source and destination of a PCN flow or proxies thereof, react to the packet markings in a similar way as to ECN but perform AC and FT instead of rate reduction. Since PCN sources and destinations take over the functionality of PCN ingress and egress nodes, the concept of a PCN domain is no longer needed. Packets from end-to-end PCN flows are preferentially forwarded by all upgraded PCN nodes in the Internet. When they traverse an edge-to-edge PCN domain, they do not receive special treatment by the network boundaries, but they are metered, possibly marked, and preferentially forwarded like packets from edge-to-edge PCN flows. This is illustrated in Fig. 4. As end-to-end PCN can protect QoS only on links supporting PCN metering and marking, its deployment in the Internet is more attractive when sufficiently many edge-to-edge PCN islands already exist. However, end-to-end PCN is rather a solution for deployment in corporate networks than in the general Internet because of trust issues. Therefore, the current charter of the IETF WG on PCN covers only the standardization of edge-to-edge PCN.

Mechanisms for end-to-end PCN are more challenging than for edge-to-edge PCN. An ingress-egress aggregate (IEA) comprises all PCN flows between one PCN ingress node and another PCN egress node. With edge-to-edge PCN, the PCN egress node can evaluate the packet markings per IEA and base its AC and FT decisions on aggregated feedback of multiple flows. With end-to-end PCN, individual PCN endpoints can evaluate the markings of only their own flows. This limits the choices of applicable metering- and marking as well as AC and FT algorithms for end-to-end PCN [50].

IV. METERING AND MARKING

The core idea of PCN is that packets are metered and marked on the links of a PCN domain to give feedback about its pre-congestion state to its boundary nodes. Four fundamentally different metering and marking algorithms are used to detect pre-congestion: excess marking, excess marking with marking frequency reduction, exhaustive marking, and fractional marking. In the following, we describe the metering and marking algorithms based on token buckets (TB). Other principles, e.g. virtual queues [47], can also be used for implementation.

Input: token bucket parameters S , R , IU , F , packet size B and marking M , current time now

$$F = \min(S, F + (now - IU) \cdot R);$$

$$IU = now;$$

if ($M \neq \text{marked}$) **then**

if ($F < B$) **then**

$M = \text{marked};$

else

$F = F - B;$

end if

end if

Algorithm 1: EXCESS MARKING: only those packets exceeding the reference rate R are marked.

A. Excess Marking

Excess marking [25] marks those packets that exceed a certain reference rate R on a link so that the non-marked traffic rate is at most R . When configured with the admissible or supportable rate (AR , SR) as reference rate, the rate of the excess-marked traffic is an estimate of the AR - or SR -overload.

1) *Plain Excess Marking:* Plain excess marking uses a TB with a bucket size S . The TB is continuously filled with tokens with a reference rate R and the variable F shows its fill state, i.e. the number of tokens in the bucket. The variable IU records the time when the TB was last updated and the global variable now indicates the current time.

Algorithm 1 is called for each packet. First, the fill state F of the TB is updated and so is IU . Only unmarked packets are metered and marked. If F is smaller than the packet size B , the packet is marked. Otherwise, the number of tokens in the bucket is reduced by the packet size B .

This type of marking behavior has the great advantage that it is readily available in today's routers. It is used by various proposals [6], [18], [19], [42] that are reviewed in Sect. VIII-A, Sect. VIII-B, Sect. VIII-C, and Sect. VIII-D.

2) *Excess Marking with Packet Size Independent Marking (PSIM):* The marking in Algorithm 1 depends on the packet size B . This can lead to unfair treatment of flows with large packets if the packet markings are used as hints whether a certain flow should be admitted or terminated [50]. Packet size independent marking can be achieved by substituting

Input: token bucket parameters S, R, IU, F, T , packet size B and marking M , current time now

```

 $F = \min(S, F + (now - IU) \cdot R);$ 
 $IU = now;$ 
if ( $F < T$ ) then
   $M = \text{marked};$ 
end if
 $F = \max(0, F - B);$ 

```

Algorithm 2: THRESHOLD MARKING: all packets are marked if the PCN rate exceeds the reference rate R .

the condition ($F < B$) in Algorithm 1 by ($F < 0$). As a consequence, the fill state can become negative for a while.

B. Excess Marking with Marking Frequency Reduction (MFR)

The proposals in [6] and [71] (see Sect. VIII-C and Sect. VIII-G) require that only a fraction of the traffic rate, that is above the reference rate R , is marked. This can be achieved by excess marking with marking frequency reduction (MFR). Simple MFR takes only the number of marked packets into account while proportional MFR takes also their size into account. We show how both options can be implemented.

1) *Excess Marking with Simple MFR:* Simple MFR is achieved by extending Algorithm 1 with (**if** ($M = \text{marked}$) **then** $F = \min(S, F + I)$) at its very end. Thus, a fixed increment of I tokens is added to the TB for each marked packet. Note that it is irrelevant whether the packet was marked by the current call of the algorithm or by a previous call at a preceding node.

2) *Excess Marking with Proportional MFR:* It was shown in [50], that MFR in proportion to the size of marked packets improves the control over some FT algorithms. It can be achieved by scaling the increment I with the size of the marked packet: $I = \beta \cdot B$ where β is a constant scaling factor.

C. Exhaustive Marking

Exhaustive marking marks all packets on a link when the metered rate exceeds its reference rate R . We present two different implementations that provide similar marking behavior.

1) *Threshold Marking:* The basic structure of threshold marking is similar to the one of excess marking. However, packets are marked if the fill state F of the TB is lower than a configured threshold T , i.e., marking is independent of the packet size. Moreover, the fill state F is reduced by the size of each metered packet regardless of whether it was already marked or not. Algorithm 2 explains threshold marking in detail.

If the metered traffic rate exceeds the reference rate R , the tokens are faster consumed than refilled and the fill state F of the TB goes to zero and remains small. Therefore, F stays below the marking threshold T and all packets are marked. Threshold marking is applied by [6], [18], [42], and [65] (see Sect. VIII-A, Sect. VIII-C, Sect. VIII-D, and Sect. VIII-E).

Input: token bucket parameters S, R, IU, F, T , counter Cnt , denominator N of fraction $1/N$, packet size B and marking M , current time now

```

 $F = \min(S, F + (now - IU) \cdot R);$ 
 $IU = now;$ 
if ( $F < T$ ) then
  if ( $Cnt < 0$ ) then
     $M = \text{marked};$ 
     $Cnt = Cnt + N \cdot B;$ 
  end if
   $Cnt = Cnt - B;$ 
end if
 $F = \max(0, F - B);$ 

```

Algorithm 3: FRACTIONAL MARKING: $1/N$ of the traffic is marked if the PCN rate exceeds the reference rate R .

2) *Ramp Marking:* The intention of ramp marking is to start marking early when the fill state of the TB is still high. Packets are marked with a probability that depends on the TB fill state F . It linearly increases from an upper TB threshold T_{ramp} to a lower TB threshold T . If F is below T , all packets are marked. Ramp marking can emulate threshold marking by setting $T_{ramp} = T$. Ramp marking is clearly inspired by RED. In contrast to RED [27], the marking probability depends on the current TB fill state F instead of an exponential average thereof. Ramp marking is more complex and computationally expensive than threshold marking since it requires random numbers. Ramp marking was considered as an alternative to threshold marking in [14]. Ramp and threshold marking have been investigated in [47], but no significant benefit of ramp marking was found.

D. Fractional Marking

In contrast to exhaustive marking, fractional marking marks only $1/N$ of the traffic when the metered rate exceeds its reference rate R . Algorithm 3 achieves that behavior. It is a simple extension of threshold marking and requires an additional byte counter Cnt . Its behavior differs from threshold marking only if the fill state F of the token bucket falls below its threshold T . In that case, the packet is marked only if the counter Cnt is negative and then the counter Cnt is increased by $N \cdot B$. Afterwards, the counter Cnt is decreased by the packet size B regardless of its value. This modification effects that only $1/N$ of the PCN traffic is marked when the metered rate exceeds the reference rate R . This algorithm also achieves packet size independent marking. The algorithm can be easily modified so that $1/N$ of the packets are marked instead $1/N$ of the data rate. Fractional marking is used in [65] (see Sect. VIII-E).

E. Summary of PCN Marking Methods

The presented metering and marking methods are summarized in Fig. 5. Excess marking marks the metered traffic that exceeds the reference rate of the marker. There are two excess marking methods: plain excess marking has the

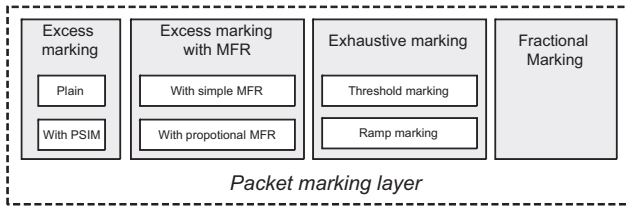


Fig. 5. Overview of different marking schemes.

tendency to mark larger packets with higher probability. This is different for excess marking with packet size independent marking. Excess marking with marking frequency reduction (MFR) marks traffic in proportion to the metered traffic that exceeds the reference rate. The strength of the MFR can be independent of or proportional to the size of the marked packets. Exhaustive marking marks all packets if the metered traffic exceeds the reference rate. In contrast to threshold marking, ramp marking reacts more sensitive to fluctuations of the metered traffic. In case of short-term traffic bursts, it marks more packets than threshold marking when the rate of the metered traffic is still below the reference rate, but this does not significantly impact the behavior of PCN-based AC and FT. Fractional marking is similar to threshold marking, but it marks only $1/N$ of the traffic when the metered traffic exceeds its reference rate.

V. ENCODING OPTIONS FOR PCN MARKING

PCN requires an encoding scheme to record in the IP header whether a packet belongs to a PCN flow and whether it has been re-marked by a PCN node due to pre-congestion. The difficulty is that there are almost no free bits in the IP header that can be used for that purpose so that bits which are already in use need to be reused. First, we briefly summarize general encoding issues and then we present several encoding options that are currently discussed in IETF. Finally, we present an abstraction that allows to speak about packet markings without the knowledge of the exact encoding scheme.

A. Encoding Issues with DSCPs, the ECN Field, and Tunneling

The differentiated services (DS) field in the IP header [56] is planned to be reused for PCN encoding. The type of service (TOS) octet in the IPv4 header [57] and the traffic class octet in the IPv6 header [22] were redefined to the DS field in [56]. It consists of the 6 bit DiffServ codepoint (DSCP) and the 2 bit “currently unused” (CU) field. Later, the CU field was renamed to the explicit congestion notification (ECN) field [59], [60]. Encoding in MPLS is even more challenging. To differentiate traffic, the 4 bytes shim header has only the 3 bit EXP-field for experimental use [61]. It has recently been renamed to the traffic class (TC) field [3].

In the following, we explain constraints that need to be respected when reusing the DS field for PCN encoding.

1) *Problems with DSCPs*: DSCPs are intended to indicate the per-hop behavior (PHB) for a packet. The PHB denotes how a packet is to be scheduled and buffered or dropped inside a DiffServ node. It has only local meaning as ingress nodes of

DiffServ domains can change the DSCP of a packet. This is a potential threat to the persistence of PCN markings when PCN should ever be extended towards multiple domains. The DSCP may be reused either to just indicate that a packet belongs to a PCN-enabled flow or to indicate both whether a packet belongs to the PCN class and whether it is marked or not. The latter requires at least two DSCPs which is problematic as only very few DSCPs are available. In addition, if more than a single PCN class should ever be supported, the number of required DSCPs scales with the number of supported PCN classes.

2) *Problems with the ECN Field and Tunneling*: Tunneling adds another IP header to a packet. The header of the original packet becomes the inner header and the new header becomes the outer header which is processed by forwarding nodes. The encoding scheme must cope with tunneling within PCN domains. However, various tunneling schemes limit the persistence of the ECN field in the top-most IP header to a different degree. Two IP-in-IP tunnelling modes are defined in [60] and a third one in [63] for IP-in-IPsec tunnels.

The limited-functionality option in [60] requires that the ECN codepoint in the outer header is set to not-ECT. As a consequence, ECN routers along the tunnel drop packets instead of marking them in case of congestion. The tunnel egress just decapsulates the packet and leaves the ECN codepoints of the inner packet header unchanged. This tunneling mode is not useful for tunnels inside PCN regions because the ECN marking information from the outer ECN field is lost upon decapsulation.

The full-functionality option in [60] requires that the ECN codepoint in the outer header is copied from the inner header unless the inner header codepoint is CE. In this case, the outer header codepoint is set to ECT(0). This choice has been made for security reasons to disable the ECN fields of the outer header as a covert channel. Upon decapsulation, the ECN codepoint of the inner header remains unchanged unless the outer header ECN codepoint is CE. In this case, the inner header codepoint is also set to CE. This preserves outer header information if it is CE. However, the fact that CE marks of the inner header are not visible in the outer header is a problem for all sorts of excess marking as they take already marked traffic into account (see Sect. IV-A and Sect. IV-A2). Moreover, it is a problem for some FT mechanisms that require preferred dropping of marked packets to work properly (see Sect. VII-F2, VIII-A, and VIII-B).

Tunneling with IPsec copies the inner header ECN bits to the outer header ECN bits [63, Sect. 5.1.2.1] upon encapsulation. Upon decapsulation, CE-marks of the outer header are copied into the inner header, the other marks are ignored. With this tunneling mode, CE marks of the inner header become visible to all meters, markers, and droppers for tunneled traffic. In addition, information from the outer header can be propagated into the inner header. Therefore, only IPsec tunnels should be used inside PCN domains when ECN bits are reused for PCN encoding. However, limitations still apply. Only the CE codepoint can be used to re-mark packets as the change of one of the other codepoints in the outer header to any other codepoint is not persistent after decapsulation.

3) *Problems with the ECN Field*: The guidelines in [26] describe how the ECN bits can be reused while being compat-

ible with [60]. A CE mark of a packet must never be changed to another ECN codepoint. Furthermore, a not-ECT mark of a packet must never be changed to one of the ECN-capable codepoints ECT(0), ECT(1), or CE. When the ECN field is reused for PCN marking, care must be taken that this rule is enforced when PCN packets leave the PCN domain. There are two basic options to handle ECN flows when the ECN field is reused for PCN marking in a DiffServ domain.

a) Disabling ECN: The PCN ingress node sets the appropriate ECN mark in incoming packets to indicate that they are initially unmarked. The PCN egress node resets their ECN field to not-ECT to make sure that previous not-ECT marks are not changed to any other ECN marks through the PCN domain. This disables ECN for PCN flows so that they cannot profit from both ECN and PCN. As it is prohibitive to change CE marks to not-ECT, CE-marked packets must be dropped by PCN ingress nodes.

b) Tunneling ECN Marks: Another option is tunneling ECT- or CE-marked packets through the PCN domain using the limited-functionality mode. This preserves the original ECN field so that PCN egress nodes receive PCN feedback and end systems receive ECN feedback which is not modified by the PCN domain. Moreover, CE-marked packets do not need to be dropped by the PCN ingress node.

B. Encoding Options

Different proposals for PCN-based AC and FT require a different number of codepoints to mark packets. Therefore, many encoding options have been presented and discussed in IETF [16]. However, we review only those that use a DSCP to indicate PCN traffic, use the ECN field to indicate the marking, and conform with the limitations due to tunneling.

Most encoding schemes require a single DSCP, designated as DSCP *m*, others need two different DSCPs, designated as DSCP *m* and DSCP *n*. These DSCPs should be usable both for non-PCN and for PCN traffic. Therefore, a general rule is that not-ECT indicates non-PCN traffic while the codepoints ECT(0), ECT(1), and CE may be reused for the encoding of PCN marks. A candidate DSCP for being reused as DSCP *m* is the VOICE-ADMIT DSCP which is currently about to be standardized to indicate EF-PHB for AC-controlled flows [8]. As a consequence, VOICE-ADMIT flows cannot profit from ECN unless their packets are tunneled through the PCN domain and PCN marking is then applied only to the outer header as described in Sect. V-A3.

1) Baseline Encoding: Baseline encoding has been presented in [54]. The meaning of the ECN field if the PCN DSCP is set is summarized in Table I. The not-ECT codepoint is used as “not-PCN” indicating that this traffic is not under PCN control. ECT(0) is reused to label “not-marked” (NM) PCN packets and CE is reused to label “PCN-marked” (PM) packets. ECT(1) is reserved for “experimental use” (EXP) to allow encoding extensions. When PCN packets enter a PCN domain, they are marked with a NM codepoint and they are possibly re-marked to PM by PCN nodes. Hence, this encoding scheme allows the use of a single marking scheme which may be, e.g., excess or threshold marking.

2) PCN 3-State Encoding Extension in a Single DSCP (3-in-1): 3-in-1 encoding [15] is an extension of baseline encoding and assumes that the re-marking limitations due to tunneling (see Sect. V-A2) will be resolved in the future, e.g., by [13]. That means, ECT(1) and CE must be copied from the outer header to the inner header upon decapsulation. As a consequence, two different marking schemes can be concurrently used: ECT(1) indicates that packets are marked by the one scheme and CE indicates that packets are marked by the other scheme. As most proposals use threshold and excess (traffic) marking, these codepoints are called ThM and ETM (cf. Table I). Since they allow re-marking of ThM-marked packets to ETM-marked packets but not vice-versa, CE is chosen for ETM to be compatible with [26].

3) Packet-Specific Dual Marking: Packet-specific dual marking (PSDM) has been presented in [43], [44] as an extension of baseline encoding. It also supports two concurrent marking schemes. However, in contrast to 3-in-1 encoding it does not assume any changes to the tunneling rules and supports only one marking scheme per packet. Table I summarizes the meaning of its ECN field. Unmarked packets that are subject to excess marking have the not-ETM (“not excess-traffic-marked”) codepoint in their header while unmarked packets that are subject to threshold marking have the not-ThM (“not threshold-marked”) codepoint. When a packet is marked by the marking scheme it is subject to, its codepoint is set to “PCN-marked” (PM). The marking algorithms must be configured so that excess marking re-marks only not-ETM packets to PM and threshold marking re-marks only not-ThM packets to PM. PSDM is useful when AC relies on probe packets (see Sect. VI-A and Sect. VI-C) that are subject to threshold marking and FT relies on data packets that are subject to excess marking. The benefit of PSDM is that two marking schemes are supported using only a single DSCP. When routers implement two marking schemes, but only one of them is used, the routers do not need to be configured which marking scheme applies as the packets tell them which marking scheme to use. This is another benefit of the PSDM semantics.

4) PCN 3-State Encoding Extension in two DSCPs (3-in-2): 3-in-2 encoding [55] is an extension of baseline encoding that supports two concurrent marking schemes. In contrast to PSDM, both marking schemes can apply to all PCN packets and in contrast to 3-in-1, 3-in-2 does not assume modified tunneling rules. As only the CE codepoint can be used for re-marking, another DSCP *n* is needed in addition to DSCP *m* for which ECN is also disabled. The meaning of the combined DSCP and ECN field is summarized in Table I. When packets of a PCN flow enter a PCN domain, their DS field is set to NM. When packets are threshold- or excess-traffic-marked, their DS field is set to ThM or to ETM. Excess markers meter NM- and ThM-packets and possibly re-mark them to ETM. Threshold markers meter all PCN packets and possibly re-mark only NM-packets to ThM.

5) 3-in-2 Encoding with Limited ECN Support (3-in-2-LES): 3-in-2-LES is an extension of 3-in-2 encoding [55]. It suggests to set the DS field of packets belonging to PCN-enabled flows to NM(not-ECT), NM(ECT(0)), NM(ECT(1)), or NM(CE) according to the value in the ECN field before

TABLE I
INTERPRETATION OF THE ECN FIELD FOR VARIOUS PCN ENCODING OPTIONS.

Encoding	DSCP	not-ECT ('00')	ECT(0) ('10')	ECT(1) ('01')	CE ('11')
Baseline	DSCP m	not-PCN	NM	EXP	PM
3-in-1	DSCP m	not-PCN	NM	ThM	ETM
PSDM	DSCP m	not-PCN	not-ETM	not-ThM	PM
3-in-2	DSCP m	not-PCN	NM	CU	ThM
3-in-2	DSCP n	not-PCN	CU	CU	ETM
3-in-2-LES	DSCP m	not-PCN	NM(Not-ECT)	NM(CE)	ThM
3-in-2-LES	DSCP n	not-PCN	NM(ECT(0))	NM(ECT(1))	ETM

they enter the PCN domain (see Table I). This encoding can be used in two different ways. Normally, endpoints wish to receive only ECN feedback. In that case, ingress nodes drop CE-packets (see Sect. V-A3). Egress nodes restore the original codepoint X from NM(X) and re-mark ThM- and ETM-packets to not-ECT. This preserves the ECN field of PCN packets without tunneling if they were not re-marked by PCN nodes. If endpoints wish to receive combined ECN and PCN feedback which may be useful in the future [64], they must signal this explicitly. Then, the ingress node does not need to drop CE-packets. Moreover, the egress node restores the original codepoint X from NM(X) and re-marks ThM- and ETM-packets to CE.

6) *Providing PCN Feedback to ECN Receivers*: If ECN receivers wish to receive combined ECN feedback from outside PCN domains and PCN feedback from inside PCN domains [64], this needs to be signaled explicitly to PCN ingress and egress nodes (see Sect. V-B5). This behavior can be achieved when PCN ingress nodes encapsulate the packets in IPsec tunnels and PCN egress nodes decapsulate this traffic. Thus, ECN marks are saved through the PCN domain and potential PCN marks are added (see Sect. V-A2).

C. Encoding Abstraction

In the remainder of this paper, we abstract from the specific encoding scheme. We assume that all unmarked packets are labelled with “no-pre-congestion” (NP), packets are re-marked to “admission-stop” (AS) when the reference rate of the marker was set to the admissible rate and to “excess-traffic” (ET) when the reference rate of the marker was set to the supportable rate. When two concurrent marking schemes are in use, AS-marked packets are possibly re-marked to ET but not vice-versa.

VI. PCN-BASED ADMISSION CONTROL (AC)

When PCN markers are configured with the admissible rates of the links, they start marking traffic as soon as the PCN rate on the links exceeds that rate. Then, egress nodes detect AS-marked packets and this information is used to perform AC. There are basically two different approaches for PCN-based AC. Probe-based AC for individual flows relies on the feedback of probe packets that are associated only with these flows. IEA-based AC relies on the current AC state of the ingress-egress aggregate (IEA). We review both of them in the following.

A. Probe-Based AC for Individual Flows (PBAC-IF)

We first explain the general concept of PBAC-IF by explicit PBAC-IF and then present how implicit PBAC-IF works without explicit probe packets.

1) *Explicit Probing*: With explicit probing, the PCN ingress node generates upon admission request one or more unmarked probe packets and sends them to the appropriate PCN egress node. The egress node returns the probe packets to the PCN ingress node and if the PCN ingress node receives all of them unmarked, the new flow can be admitted, otherwise it must be blocked. This delays the probing decision by at least one round trip time of the PCN domain. Probing basically works with any marking scheme. However, with exhaustive marking, a single probe packet is enough to test whether the prospective path of the new flow is AR-pre-congested. With excess or fractional marking, only some packets are marked and many probe packets are needed for a reliable admission decision [48].

If the PCN ingress node does not know the corresponding PCN egress node for an admission request, the probe packets can be sent to the final destination and they are intercepted by the respective PCN egress node to avoid that they leak out of the PCN domain. In case of multipath routing, probe packets must even have the same source and destination address and port as the future data packets to guarantee that they are forwarded on the same path. This is due to the fact that routers usually apply flow-based load balancing algorithms [40].

2) *Implicit Probing*: Probing can also be done implicitly, e.g., in the presence of an end-to-end resource reservation protocol such as RSVP [6]. To establish a reservation, RSVP sends a PATH message to explore the path of the future data packets and each RSVP-enabled node sets up a PATH state. The destination responds with a RESV message to set up the reservation (RESV state) hop-by-hop along the explored path. PATH and RESV messages are periodically sent to refresh the flow states as they otherwise expire (soft state principle). We briefly explain how PATH and RESV messages can be reused for probing. Interior nodes of a PCN domain are usually RSVP-disabled so that PCN ingress and egress node are neighboring RSVP nodes. When the PCN egress node receives an initial PATH message, it forwards the message as usual if it is not AS-marked. Otherwise, it sends back a PATHERR message to the previous RSVP hop to indicate that the new flow should be blocked. Thus, when the PCN ingress node receives an initial RESV message, the corresponding PATH message was not AS-marked when travelling across the PCN domain and the respective flow can be admitted. In contrast to explicit probing, implicit probing does not require explicit probe packets and it does not delay the reservation setup.

B. Ingress-Egress-Aggregate-Based AC (IEABAC)

IEABAC assumes that all traffic from one PCN ingress to another PCN egress node takes the same path. Each IEA is

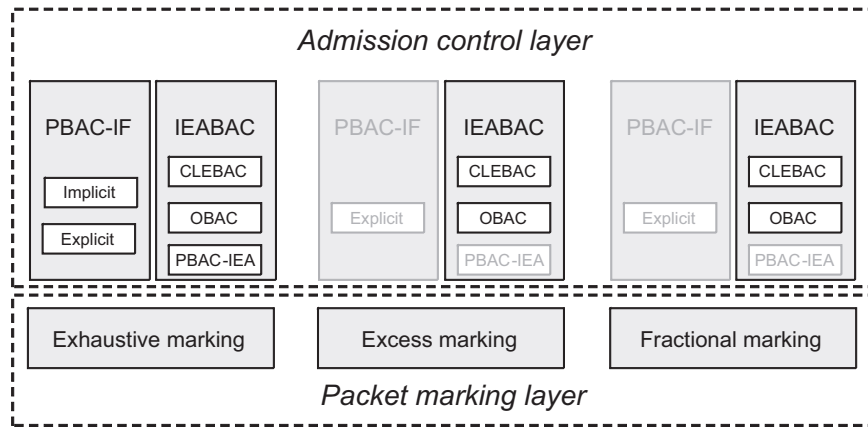


Fig. 6. Applicability of AC methods with different marking schemes; technically difficult solutions are greyed out.

associated with a single AC state K whose value is either *admit* or *block*. When a new flow requests admission, the AC entity needs to find out which IEA the new flow belongs to and then it admits or blocks it depending on the AC state K of that IEA. More precisely, the PCN ingress node keeps the AC state K and the PCN egress node sends admission-stop and admission-continue messages to toggle the admission control state K of the PCN ingress node. In the following, we present three different methods to control the AC state K of an IEA.

1) *CLE-Based AC (CLEBAC)*: With CLEBAC, the PCN egress node measures the rates of AS-marked and non-AS-marked data traffic (ASR , $nASR$) per IEA [6], [18], [71]. This is done based on measurement intervals of duration D_{MI} . Then, the congestion level estimates $CLE = \frac{ASR}{ASR+nASR}$ are calculated. If the CLE is smaller than or equal to a certain threshold T_{CLE} , the AC state K is set to *admit*; otherwise it is set to *block*. This method has two parameters: D_{MI} and T_{CLE} .

To avoid oscillations of the AC state K , the following hysteresis may be used. If the CLE value exceeds an admission-stop threshold T_{CLE}^{AStop} , the AC state K is turned to *block*; if it falls below an admission-continue threshold T_{CLE}^{ACont} , the AC state K is turned to *admit*; otherwise, the AC state K is not changed. This method depends on three parameters: D_{MI} , T_{CLE}^{AStop} , and T_{CLE}^{ACont} .

Another variant calculates the CLE based on an exponentially weighted moving average (EWMA), i.e., $CLE_{new} = w \cdot \frac{ASR}{ASR+nASR} + (1-w) \cdot CLE_{old}$ [19].

CLEBAC can be used with any marking scheme. With exhaustive marking, the admission result is rather insensitive to the value of the CLE-thresholds between 0 and 1 [48]. With excess or fractional marking, the CLE-thresholds must be set to positive values close to 0.

2) *Observation-Based AC (OBAC)*: With OBAC, the PCN egress node observes the data traffic per IEA and turns the AC state K of an IEA to *block* when it detects an AS-marked packet [6]. It turns the state back to *admit* when it has not seen an AS-marked packet for D_{block}^{min} time. D_{block}^{min} is the only configuration parameter of OBAC. OBAC works well with exhaustive marking, excess marking, and fractional marking.

3) *PBAC for IEAs (PBAC-IEA)*: With PBAC-IEA, the PCN ingress node sends explicit probe packets in regular intervals to the PCN egress node. This kind of probing is simpler

than PBAC-IF since it does not need to make sure that probe packets take the same path as prospective data packets of an admission request. If a probe packet is missing or if it is AS-marked, it turns the AC-state K of the IEA to *block*. It turns K back to *admit* when it has not detected missing or AS-marked packets for D_{block}^{min} time. The frequency of probe packets and D_{block}^{min} are the two parameters of this method. This method can also be applied with any marking scheme. However, excess and fractional marking require a higher frequency of probe packets for reliable admission decisions than exhaustive marking.

C. Discussion of PCN-Based AC Methods

We briefly discuss the applicability of the presented AC methods with different marking schemes, their usefulness in case of low flow aggregation per IEA, their applicability with multipath routing and for end-to-end PCN, and their impact on timeliness and accuracy of AC decisions.

1) *Applicability of AC Methods with Different Marking Schemes*: Fig. 6 summarizes the options for PCN-based AC. Basically, any AC method can be combined with any marking scheme. However, threshold marking yields clearer feedback than excess or fractional marking and leads to faster and more reliable control of the AC state K for IEABAC. This is only an issue for IEAs with a small number of admitted PCN flows. Moreover, excess and fractional marking require more probe packets for any kind of PBAC so that explicit PBAC-IF and PBAC-IEA are impractical and implicit PBAC-IF is even impossible. The same holds for excess marking with MFR which is omitted in the figure.

Hence, PBAC methods require threshold marking to work well. In contrast, most FT method require excess marking. Therefore, the application of PBAC calls for two marking schemes which is more difficult for PCN encoding than a single marking scheme. However, it can be achieved with PSDM when probe traffic is only subject to threshold marking and data traffic is subject to excess marking.

2) *Usefulness of AC Methods in Case of Low Flow Aggregation per IEA*: When the average number of PCN flows per IEA is small, many IEAs are even empty. This scenario is even quite likely in the future [23] for large networks carrying realtime flows in spite of many PCN flows per

link. Empty IEAs are problematic for CLEBAC and OBAC because they cannot block new admission requests. As a result, overadmission can easily occur [49]. This cannot happen with all PBAC methods including PBAC-IEA.

3) *Applicability of AC Methods with Multipath Routing:* All IEABAC method including PBAC-IEA cannot cope with multipath routing as the admission of a new request is taken independently of the prospective path of the associated flow. Therefore, flows are possibly admitted although their paths are already *AR*-pre-congested and they are possibly blocked although their paths are not *AR*-pre-congested. This cannot happen with implicit or explicit per-flow probing when probe packets take the same path as future data packets of the flow.

4) *Applicability of AC Methods for End-to-End PCN:* In case of end-to-end PCN, IEAs do not exist as end systems are the control entities of PCN flows. Therefore, all IEABAC methods are not applicable in this context and only PBAC-IF methods remain for this application scenario.

5) *Impact of AC Methods on Timeliness and Accuracy of Admission Decisions:* Implicit PBAC-IF is based on recent PCN feedback and does not delay admission decision. Explicit PBAC-IF is also based on recent PCN feedback and delays admission decisions by at least one round trip time of the PCN domain which is quite short. IEABAC methods do not delay admission decisions as they are performed based on the local AC state K . However, the AC state K may have been set a while ago and does not reflect the current pre-congestion state of the associated path. The parameters to control that delay are D_{MI} for CLEBAC, D_{block}^{min} for OBAC and PBAC-IEA, as well as the frequency of probe packets for PBAC-IEA. Moreover, the use of excess or fractional marking for AC also leads to delayed control of the AC state K as only a few packets are marked in case of *AR*-pre-congestion.

VII. PCN-BASED FLOW TERMINATION (FT)

FT methods use PCN feedback to detect *SR*-pre-congestion and terminate already admitted flows if necessary. There are basically three different approaches: measured-rate based flow termination (MRT), geometric flow termination (GFT), and marked-packet based flow termination (MPT).

We provide some general remarks about flow termination, present the different mechanisms in detail, point out general problems with some FT methods, and finally discuss and summarize the shown mechanisms.

A. General Remarks about Flow Termination

We briefly discuss basic termination strategies, the impact of multipath routing, show some motivation for and implications of single marking schemes, and explain what we understand by over- and undertermination.

1) *Basic Termination Strategies:* We assume that a FT entity can terminate already admitted PCN flows if necessary. Termination implies sending a teardown message, e.g. *RESVTEAR* in *RSVP*, and modifying packet filters in the PCN ingress nodes to exclude terminated flows from prioritized forwarding. Basically, the FT entity can be collocated with PCN ingress nodes, PCN egress nodes, or it may be located in a central node.

PCN ingress and egress nodes can inform the FT entity to remove admitted PCN traffic in three different ways. They may signal the IDs of explicit flows that need to be terminated, they signal the PCN rate that should be terminated (termination rate TR), or they signal the PCN rate that should not be terminated (edge-to-edge supportable rate ESR). While the flows to be terminated are already determined in the first case, the two other options allow the FT entity to choose the flows to be terminated from a larger set of flows, e.g. all flows of a specific IEA. This allows to support termination policies such as low or high termination priorities which can be a useful feature to support emergency calls.

To work properly, the FT entity must know reliable rate information about admitted flows, e.g., through measurement results or traffic descriptors that are possibly also applied in ingress policers. Traffic descriptors usually overestimate the flow rates. As a result, too little traffic is terminated when tearing down flows with an overall rate equal to the termination rate TR ; this requires additional termination steps. Likewise, too much traffic is terminated when tearing down all flows except for a set of flows with an overall rate equal to the edge-to-edge supportable rate ESR ; this immediately leads to overtermination.

2) *Impact of Multipath Routing:* If multipath routing is used in a network, flows of a single IEA may take different paths [40]. Some of these paths may be *SR*-pre-congested, others not. Depending on the configuration of marking algorithms, a marked packet denotes that the corresponding flow is carried over an *AR*- or *SR*-pre-congested path. We call such a flow also marked. Therefore, marked flows are good candidates for termination while non-marked flows of the same IEA may be carried over non-pre-congested paths. Thus, termination of only marked flows is important for a fast reduction of *SR*-overload and the persistence of flows on non-pre-congested paths [51]. The PCN egress node can record recently marked flows and the FT entity may choose only marked flows for termination. In that case, packet size independent marking (see Sect. IV-A2) should be used to achieve termination fairness among flows with small and large packets. Moreover, this idea requires that the FT entity is collocated with the PCN egress node or the PCN egress nodes need to communicate the information about marked flows to the FT entity.

3) *AC and FT with Only Two Codepoints:* The intuitive approach for PCN marking is dual marking which requires three codepoints (NM, AS, ET). A threshold marker with the reference rate set to the admissible rate re-marks all NM-marked packets to AS in case of *AR*-pre-congestion and an excess marker with the reference rate set to the supportable rate re-marks all NM- or AS-marked traffic above the supportable rate to ET. Therefore, with dual marking it is easy to detect *AR*-pre-congestion and to determine the amount of *SR*-overload.

However, three PCN codepoints are more difficult to claim than only two codepoints due to the unavailability of free codepoints in the IP header (see Sect. V). Therefore, concepts supporting both AC and FT methods with only two different codepoints are attractive. This can be achieved by using different fractions of marked PCN traffic to differentiate between

AR- and SR-pre-congestion. We review two approaches in the following.

a) *Fractional and Threshold Marking*: The proposal in [65] proposes to use fractional marking with the reference rate set to the admissible rate and threshold marking with the reference rate set to the supportable rate. As a consequence, in case of AR-pre-congestion only a fraction of the PCN traffic is marked and in case of SR-pre-congestion all PCN traffic is marked. However, the amount of marked PCN traffic gives no information about the quantity of the SR-overload. In Sect. VII-C we present a termination method which works with this two-codepoint marking scheme.

b) *Single Marking*: Single marking [17], [19] uses excess marking with the reference rate set to the admissible rate as a single marking scheme. As a consequence, as soon as packets are marked, AR-pre-congestion can be detected which is required for AC. Furthermore, the admissible and supportable rate on all links are connected by

$$SR = u \cdot AR \quad (1)$$

using a domain-wide constant u . And as soon as the proportion of marked packets is larger than $\frac{u}{u+1}$, SR-pre-congestion can be detected which is required for FT. This approach has the additional advantage that only a single marking scheme is needed and that excess marking already exists. Both lead to simpler and cheaper hardware. In Sect. VII-B and Sect. VII-D we show how FT methods can use marked AR-overload for their termination decisions.

4) *Over- and Undertermination*: A FT method is expected to terminate only so much traffic that the PCN rate on a SR-pre-congested link is reduced to its supportable rate. If more traffic is terminated, we talk about overtermination. If less traffic is terminated, we talk about undertermination. Inaccurate PCN feedback due to statistical variation or wrong PCN feedback due to multipath routing can cause overtermination. Undertermination can occur in combination with multipath routing and single marking schemes (see Sect. VII-E1).

B. Measured-Rate Based Flow Termination (MRT)

MRT requires excess marking in PCN nodes. All operations are performed per IEA. PCN egress nodes classify the received PCN traffic into IEAs and measure the rate of marked or unmarked traffic based on measurement intervals of duration D_{MI} . Flow termination is possibly triggered at the end of such measurement intervals.

1) *MRT with Directly Measured Termination Rates (MRT-DTR)*: MRT-DTR calculates a direct estimate of the termination rate TR and signals it to the FT entity which terminates an appropriate set of flows from the IEA. To avoid overtermination, TR should not be overestimated and a minimum inter-termination time D_{term}^{inter} between consecutive termination actions is required to make sure that the new measurement results for that IEA already reflect the last termination action.

a) *MRT-DTR with Marked SR-Overload*: When the reference rate of the excess marker is set to the supportable rate, SR-overload is marked. The PCN egress node takes the measured rates of ET-marked traffic per IEA as a direct estimate of the termination rate TR . In case of packet loss, the

termination rate TR is underestimated and several termination steps are needed. Preferential dropping of unmarked packets mitigates this problem.

b) *MRT-DTR with Marked AR-Overload*: When the reference rate of the excess marker is set to the admissible rate, AR-overload is marked. The PCN egress node measures the rates of AS-marked and non-AS-marked traffic ($ASR, nASR$) and calculates the termination rate by $TR = nASR + ASR - u \cdot nASR = ASR - (u - 1) \cdot nASR$. In case of packet loss, the termination rate TR is underestimated if marked and unmarked packets are lost with the same probability. Preferential dropping of marked packets leads to a stronger underestimation of TR while preferential dropping of unmarked packets leads to overestimation of TR .

2) *MRT with Edge-to-Edge Supportable Rates (MRT-ESR)*: MRT-ESR calculates an estimate of the edge-to-edge supportable rate ESR and signals it to the FT entity. It terminates an appropriate set of flows from the IEA so that the overall rate of the remaining flows is ESR . Traffic must be terminated only if the PCN egress node has detected SR-pre-congestion which needs to be signalled explicitly. To avoid overtermination, ESR should not be underestimated. A minimum inter-termination time between consecutive termination actions is not required. The advantage of MRT-ESR compared to MRT-DTR is that a single termination step suffices to remove overload even in case of severe packet loss.

a) *MRT-ESR with Marked SR-Overload*: The PCN egress node takes the measured rates of non-ET-marked traffic per IEA as a direct estimate of the edge-to-edge supportable rate ESR . Termination is required only if ET-marked packets have been observed. To avoid overtermination in case of packet loss, preferential dropping of marked packets is needed.

b) *MRT-ESR with Marked AR-Overload*: The PCN egress node measures the rates of AS-marked and non-AS-marked traffic ($ASR, nASR$) and calculates the edge-to-edge supportable rate by $ESR = u \cdot nASR$. Traffic must be terminated only if $nASR + ASR > u \cdot nASR$ holds. To avoid overtermination in case of packet loss, preferential dropping of marked packets is needed.

3) *MRT with Indirectly Measured Termination Rates (MRT-ITR)*: With MRT-ITR, the PCN egress node provides an estimate of the edge-to-edge supportable rate ESR and the PCN ingress node provides an estimate of the ingress rate IR per IEA. The termination rate is calculated as $TR = IR - ESR$. Appropriate signalling is required to convey the information from the PCN ingress and the PCN egress node to the FT entity together with an indication whether termination is required at all. MRT-ITR works with both marked SR-overload and marked AR-overload. The edge-to-edge supportable rate ESR as well as the indication of SR-pre-congestion are derived as in Sect. VII-B2a and Sect. VII-B2b, respectively. To avoid overtermination in case of packet loss, preferential dropping of marked packets is required to make sure that edge-to-edge supportable rates ESR are correctly measured.

Like MRT-ESR, MRT-ITR accounts for lost PCN traffic. Its disadvantage is that measurement of IR is also required and that the rates IR and ESR must be timely correlated to avoid over- or underestimated termination rates [51].

C. Geometric Flow Termination (GFT)

GFT assumes that the reference rate of threshold marking is set to the supportable rate. Furthermore, fractional marking based on the admissible rate is assumed for AC (see Sect. VIII-E). Thus, in case of *AR*-pre-congestion, a small fraction of the packets is marked while in case of *SR*-pre-congestion, all packets are marked. As the marking is done with the same codepoint, the PCN egress node computes the CLE (see Sect. VI-B1) for a specific IEA to differentiate both cases. Hence, when the CLE value is larger than a certain threshold, *SR*-pre-congestion is signalled to the FT entity which terminates a fixed percentage x of the flows of the corresponding IEA. Possibly several and sufficiently spaced termination steps are required to remove the entire *SR*-overload. The PCN rate decreases like $(1-x)^k$ where k is the number of termination steps. This geometric decrease leads to the name GFT. If the termination percentage x is small, the termination process takes long. If x is large, overtermination likely occurs.

D. Marked-Packet Based Flow Termination (MPT)

With MPT, individual marked packets trigger the termination of single flows. As a result, MPT terminates flows successively and the *SR*-overload is gradually reduced which may still be fast. This is different to MRT and GFT which terminate several flows in one shot. MPT terminates only recently marked flows by communicating their flow ID to the FT entity which may be collocated with the PCN egress node. This is an important feature in networks with multipath routing (see Sect. VII-A2).

We first present three MPT mechanisms that require the reference rates of the marker to be set to the supportable rates [50]. Then, we present a conversion algorithms that converts marked *AR*-overload into marked *SR*-overload which makes two of the three presented MPT methods applicable in a single marking context.

1) *MPT Based on Excess Marking with Marking Frequency Reduction (MPT-MFR)*: MPT-MFR requires excess marking with MFR and the reference rate of the marker must be set to the supportable rate of the link. A flow is terminated as soon as one of its packets is ET-marked [6]. If every packet exceeding the supportable rate is ET-marked, many flows are terminated within short time so that overtermination occurs. Therefore, MPT-MFR requires that packets are ET-marked less frequently, i.e., the PCN nodes should apply packet size independent excess marking (see Sect. IV-A2) with proportional MFR (see Sect. IV-B2). Then, only one packet is ET-marked for σ_b bytes that exceed the supportable rate on a link. The parameter σ_b controls the termination speed of MPT-MFR and its proper choice prevents overtermination [50].

2) *MPT Based on Plain Excess Marking for Individual Flows (MPT-IF)*: With MPT-IF, PCN packets are metered and marked by plain excess marking and the reference rate of the marker is set to the supportable rate. Also here, packet size independent marking (see Sect. IV-A2) is important to achieve termination fairness among flows with small and large

Input: counter Cnt , maximum counter size Cnt_{max} , packet size B and marking M

```

if ( $M == \text{unmarked}$ ) then
   $Cnt = \min(Cnt_{max}, Cnt + (u - 1) \cdot B)$ ;
else if ( $Cnt \geq 0$ ) then   $\{(M == \text{AS})\}$ 
   $Cnt = Cnt - B$ ;
   $M = \text{unmarked}$ ;
else
   $M = \text{ET}$ ;
end if

```

Algorithm 4: MARKING CONVERSION: converts a stream with AS- and non-AS-marked packets into a stream with ET- and non-ET-marked packets.

packets. The PCN egress node maintains a credit counter for each flow. This counter is reduced by the size of each received marked packet. When the counter is zero or negative, the flow is terminated. The initialization of the credit counter controls the termination speed of MPT-IF in case of *SR*-pre-congestion. The credit counter needs to be set to an appropriate value when the flow is admitted to avoid slow termination or overtermination [50].

3) *MPT Based on Plain Excess Marking for IEAs (MPT-IEA)*: MPT-IEA is a modification of MPT-IF for IEAs and assumes the same marking behavior. The motivation is to choose flows to be terminated from a larger set to support termination policies. The egress node of an IEA maintains a credit counter for that IEA which is reduced by the size of each received ET-marked packet belonging to the IEA [52]. When a packet arrives and the counter is already zero or negative, a recently marked flow f of the IEA is terminated. Then, the credit counter is incremented by the product of that flow's rate R_f and some time constant T_{inc} . The choice of this constant determines the speed of the *SR*-overload reduction, but it should not be too small to avoid overtermination [50].

4) *Marking Conversion from AR-Overload to SR-Overload*: The two algorithms MPT-IF and MPT-IEA require marked *SR*-overload. To support single marking, they should also work with marked *AR*-overload. In [37] an algorithm was presented that converts an AS-marked stream into an ET-marked stream by unmarking some AS-marked packets. That means marked *AR*-overload is converted into marked *SR*-overload. When preprocessing an AS-marked packet stream with that algorithm, MPT-IF and MPT-IEA can be used as termination method without any modification.

The conversion algorithm is shown in Algorithm 4. It is called for each packet arrival and either converts an existing AS-mark into an ET-mark or clears it. The algorithm keeps a counter Cnt with maximum value Cnt_{max} . The counter Cnt indicates how many AS-marked bytes can be re-marked to unmarked before a next AS-marked packet will not be re-marked. For each non-AS-marked byte, the counter Cnt is incremented by $u - 1$, but it cannot exceed Cnt_{max} . When a packet arrives AS-marked and if the counter Cnt is not negative, the packet is re-marked to unmarked and the counter Cnt is reduced by the packet size B . Otherwise, the packet remains marked which is then interpreted as ET-mark.

The conversion algorithm implements packet size independent re-marking as the re-marking decisions are taken independently of the packet size. A sufficiently large maximum Cnt_{max} for the counter is needed to tolerate short-term variations of packet markings, i.e. a burst of S AS-marked bytes should not be ET-marked. However, this tolerance also delays initial re-marking. The authors of [37] studied the performance of MPT based on AR-overload using marking conversion and showed that it can lead to significant overtermination.

E. General Problems of FT Methods

Like overtermination expresses the fact that more traffic than needed is terminated, undertermination means that less traffic is removed than necessary. In case of multipath routing, over- and undertermination possibly occur for IEA-based FT methods (MRT and MPT-IEA). In scenarios with multiple bottlenecks, overtermination occurs for all FT methods. We briefly illustrate these two fundamental problems in the following.

1) *Over- and Undertermination due to Multipath Routing:* With multipath routing, flows of the same IEA possibly take different paths from the ingress to the egress node of the PCN domain. Fig. 7 shows that these paths can experience different levels of pre-congestion.

MRT and MPT-IEA are IEA-based FT methods. While the termination of only marked flows is an important feature of MPT-IEA, MRT is mostly discussed without this feature. Therefore, we focus in the following on the more specific MRT method. With MRT based on SR-overload, the egress node detects SR-pre-congestion by received ET-marked packets. Thus, SR-overload can be recognized when at least one flow is carried over a SR-pre-congested path which triggers FT. FT terminates flows, but possibly also non-marked flows. The termination process continues until enough flows on the SR-pre-congested paths are terminated. Several termination steps are required because flows on non-SR-pre-congested paths are possibly also terminated. This can lead to overtermination. MPT does not suffer from this problem as it terminates flows only if at least one of their packets was ET-marked. This guarantees that only flows of SR-pre-congested paths are terminated.

This is different with MRT based on AR-overload. Packets are AS-marked so that egress nodes recognize AR-pre-congestion when they receive marked packets and only if the fraction of received AS-marked packets is large enough, SR-pre-congestion is detected. Thus, if a single path is SR-pre-congested and the other paths are not, the egress node possibly cannot detect SR-pre-congestion. If the egress node detects SR-pre-congestion, admitted flows are removed until SR-pre-congestion cannot be recognized anymore, i.e., until the fraction of AS-marked packets is small enough. This may be a case where one path is not pre-congested at all and another path is even SR-pre-congested. When flows are removed, flows from non-SR-pre-congested paths are possibly also removed. Thus, undertermination may be observed on some paths while overtermination is observed on other paths when the termination process has completed.

With MPT-IF, packet markings are evaluated per flow and so end systems can detect whether a flow runs over an SR-pre-

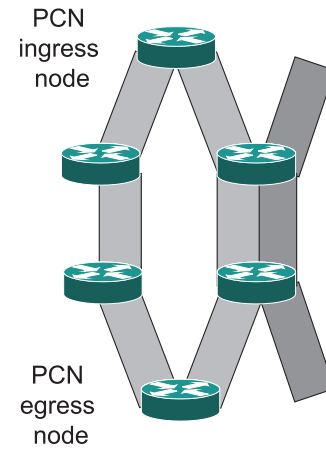


Fig. 7. A multipath can consist of non-pre-congested and AR- or SR-pre-congested paths. IEA-based FT methods possibly lead to overtermination when they react to marked SR-overload. They possibly lead to over- and undertermination when they react to marked AR-overload.

congested path. This is different with MPT-IEA when marking conversion is used to cope with marked AR-overload. The marking conversion algorithm is applied to the overall traffic. If there is substantial traffic from only lightly pre-congested paths, the conversion algorithm possibly receives too few AS-markings to produce ET-markings so that SR-pre-congestion cannot be detected and undertermination occurs. If SR-pre-congestion is detected, overtermination can occur although only ET-marked flows are terminated because the ET-markings can result from AS-marked packets carried on AR- or SR-pre-congested paths.

We briefly consider GFT. On the one hand, SR-pre-congestion cannot be detected when the fraction of marked packets is smaller than a certain CLE threshold. Then undertermination occurs. On the other hand, GFT is usually applied with fractional marking based on the admissible rate and threshold marking based on the supportable rate. Then, marked flows were possibly marked due to AR-pre-congestion only instead of SR-pre-congestion. Hence, the condition that a flow is marked is not a sufficient condition that it is carried over an SR-pre-congested path.

A detailed study of over- and undertermination due to multipath routing is provided in [51] and [37].

2) *Overtermination due to Multiple Bottlenecks:* When a link or node fails, flows are possibly rerouted over a backup path and the rerouted traffic causes simultaneous pre-congestion on several links which we call multiple bottlenecks. We consider the multiple bottleneck scenario in Fig. 8. There are 2, 3, and 4 serial links. Aggregate 0 represents rerouted traffic and the other aggregates provide cross traffic for each link. We assume that the rerouted traffic turns all links into SR-pre-congestion so that traffic is terminated. This problem has been studied in [38]. The packets of aggregate 0 are marked on all links and, therefore, its percentage of marked packets is larger than after just crossing the most pre-congested link. As a result, too much traffic is terminated and overtermination occurs. This effect of increased marking percentage is so strong, that MRT based on marked AR-overload starts terminating already when none of the links is SR-pre-congested.

The strength of the overtermination depends on the traffic load on the links relative to the supportable rate SR , the fraction of rerouted traffic, the number of pre-congested links, and the parameter u which controls $SR = u \cdot AR$ for MRT based on AR -overload. For MPT the same phenomenon is observed. Thus, it is common to all known FT methods, but it is significantly stronger when they trigger termination based on AR -overload.

F. Summary and Discussion of FT Methods

We briefly summarize the presented FT methods and compare their behavior under packet loss, their requirements regarding packet drop policies, their behavior with a small number of flows per IEA, and their ability to support multipath routing, termination policies, and end-to-end PCN.

1) *Summary of FT-Methods:* As illustrated in Fig. 9, FT methods work with different marking schemes. The most intuitive marking scheme for FT purposes is excess marking with the reference rate set to the supportable rate as the marked traffic provides an estimate for the SR -overload in the absence of traffic loss. It is the base for measured-rate based flow termination (MRT) as well as for marked-packet based flow termination (MPT) for individual flows (MPT-IF) or for IEAs (MPT-IEA). To allow for a single marking that supports both AC and FT, excess marking with the admissible rate as reference rate is required. All MRT methods and MPT for individual flows and IEAs can be adapted for that purpose. MPT with marking frequency reduction (MFR) requires excess marking with MFR with the reference rate set to the supportable rate. Finally, geometric flow termination (GFT) works with threshold marking whose reference rate is set to the supportable rate. MRT and MPT methods cannot work with threshold marking as they need some feedback that is proportional to the SR -overload to control the termination rate. Conversely, it does not make sense to use GFT when such information is available as GFT cannot profit from it.

2) *Behavior under Packet Loss and Required Packet Drop Policies:* GFT terminates a fixed fraction of the admitted traffic. Therefore, its termination speed is independent of the strength of the SR -overload. However, the time to reduce the SR -overload increases with SR -overload regardless whether packets are lost. GFT is used only with threshold marking which marks all packets or none. Therefore, the dropping policy does not impact the termination behavior.

As MPT-MFR uses excess marking with MFR, only a few packets are marked, and every marked packet terminates a flow. If marked packets are lost, the termination process is significantly delayed. If all marked packets are lost, termination does not work anymore. Hence, MPT-MFR benefits from preferential dropping of unmarked packets in case of packet loss. However, this FT mechanism breaks when all marked packets are lost which can happen if they are preferentially dropped in case of packet loss (see [50]).

MPT-IF and MPT-IEA use excess marking. When marked packets are lost, the per flow or per IEA credit counters are decremented more slowly and the termination process is delayed. Hence, MPT-IF and MPT-IEA benefit from preferential dropping of unmarked packets. Preferential dropping of marked packets can delay the termination process significantly,

but it does not break it as long as some marked packets remain. Thus, the difference between supportable rate and link bandwidth must be sufficiently large.

With MRT-DTR, termination rates are slightly underestimated in case of random packet loss. Preferential dropping of non-ET-marked packets maximizes the termination speed of MRT-DTR based on SR -overload whereas it leads to significant overestimation of the termination rates for MRT-DTR based on AR -overload and thereby to overtermination. Preferential dropping of ET-marked packets increases the underestimation of termination rates and slows down the termination process even more. MRT-ESR and MRT-ITR require preferential dropping of marked packets to avoid overtermination in case of packet loss but then they remove SR -overload traffic very fast even in the presence of large traffic loss.

When a PCN domain is equipped with upgraded PCN nodes but also with some legacy routers that do not implement PCN, AC and FT can be provided for all links that are operated by a PCN router. However, if packet loss occurs at legacy nodes which do not implement the required packet drop strategy, then all MRT methods except for MRT-DTR based on SR -overload are likely to cause overtermination when the unmarked packets are dropped. Hence, legacy nodes can safely be used only when MRT-DTR based on SR -overload, GFT, or all MPT methods are used for FT.

3) *Behavior with a Small Number of Flows per IEA:* MRT methods terminate a desired fraction of the traffic. However, if the number of flows is very small like 0-3 flows per IEA, MRT cannot always terminate the exact desired fraction. This can lead to over- or undertermination depending on the strategy [51]. For MRT based on AR -overload, significant overtermination can occur even for 10 flows per IEA. The percentage of marked packets per IEA fluctuates due to stochastic effects. Even in the absence of SR -pre-congestion, this percentage can be sometimes so high that termination is triggered which leads to overtermination. MPT methods based on marked SR -overload work well even with a small number of flows per IEA. Flows are terminated successively one after another and termination stops if the SR -pre-congestion is removed [50]. MPT methods based on marked AR -overload also cause significant overtermination for similar reasons as the MRT methods.

4) *Support of Multipath Routing:* MPT-MFR and MPT-IF terminate only flows that are carried over SR -pre-congested paths even if they react to marked AR - or SR -overload. With MPT-IEA and all MRT methods, termination decisions can basically be taken at the PCN egress node so that local information about recently marked flows can be respected. However, current proposals choose to have the FT entity collocated with the PCN ingress nodes so that support for multipath routing requires additional signalling. If MPT-IEA and MRT react to marked SR -overload, marked flows are always safe candidates for termination. This is different when these FT methods react to AR -overload since then under- and overtermination possibly occurs (see Sect. VII-E1). GFT alone works well with multipath routing. However, it was designed for scenarios with fractional marking based on the admissible rate, threshold marking based on the supportable rate, and

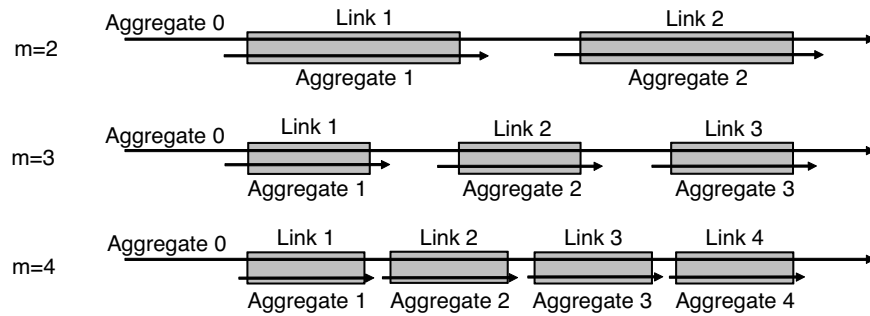


Fig. 8. Multiple bottleneck scenarios: all links are pre-congested, aggregate 0 represents rerouted traffic while other aggregates provide cross traffic. Overtermination occurs since traffic of aggregate 0 receives more markings than appropriate.

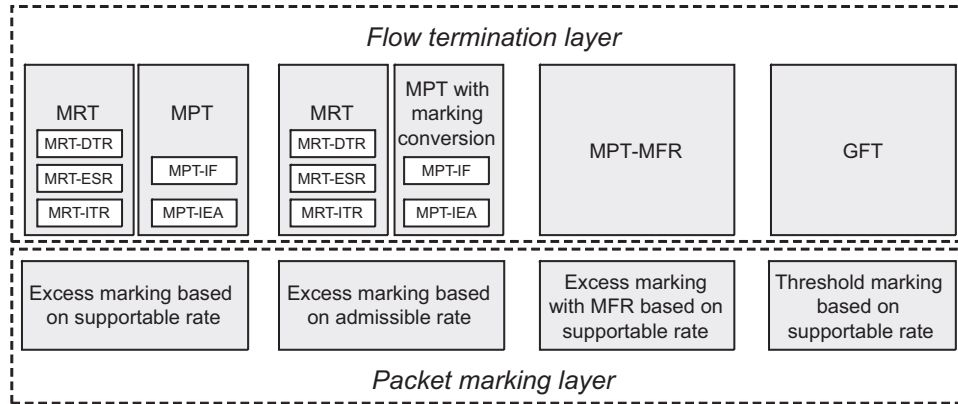


Fig. 9. Applicability of FT methods with different marking schemes.

baseline encoding (see Sect. VIII-E). Therefore, marked flows can result from *AR*- or *SR*-pre-congested paths. Under these circumstances, it is not possible to guarantee correct flow termination decisions in networks with multipath routing.

5) *Support of Termination Policies*: If the FT entity can select flows to be terminated from a larger set, then termination policies can be enforced. This works well for all IEA-based FT methods, i.e. for all MRT methods, for GFT and for MPT-IEA. MPT-MFR and MPT-IF decide only whether a particular flow is terminated. Therefore, termination policies cannot be enforced.

6) *Support of End-to-End PCN*: End-to-end PCN requires FT mechanism that can decide whether an admitted flow should be terminated when only the packet markings of that flow are given. MRT and GFT are not applicable as they tend to terminate a traffic fraction which is either proportional to the strength of the observed *SR*-overload or fixed. Therefore, they fail when they are applied to individual flows. MPT-IEA basically becomes MPT-IF if applied to individual flows instead to IEAs. Hence, only MPT-IF and MPT-MFR remain for application with end-to-end PCN and work well for that purpose.

VIII. EXISTING PROPOSALS

Various proposals for PCN-based AC and FT were presented in individual drafts in the PCN WG with different nomenclature. They all implement the edge-to-edge PCN concept. We briefly review their marking as well as their AC and

FT methods using the nomenclature presented in this paper. In addition, we highlight their benefits and shortcomings.

A. “Controlled Load” (CL) PCN

An early draft [5] is a predecessor of [18] and describes a PCN architecture to support a controlled load service within a single domain. The detailed algorithms are documented in [14]. CL uses threshold marking based on admissible rates and excess marking based on supportable rates. General dual marking is used which requires two DSCPs. CLEBAC based on ThM- and ETM-packets is used for AC (see Sect. VI-B1) and MRT-ITR is used for FT (see Sect. VII-B3). Therefore, preferential dropping of ThM- and ETM-marked packets is needed to prevent overtermination in case of packet loss.

CL requires two DSCPs for PCN encoding, it cannot block admission requests for empty IEAs, IEABAC and the specific description of MRT-ITR do not work with multipath routing, and MRT in general does not work well with a small number of flows per IEA. However, threshold marking gives clear feedback about *AR*-pre-congestion so that AC works already well for a small number of flows per IEA.

B. “Single Marking” (SM)

The SM proposal has been first presented in [17] which is a predecessor to [19]. The proposal has been evaluated in [73], [74]. SM uses excess marking based on admissible rates as a single marking scheme (see Sect. IV-A). It uses baseline encoding which requires only a single DSCP. It

implements CLEBAC for AC and MRT-ITR based on *AR*-overload for FT (see Sect. VI-B1 and Sect. VII-B3). Therefore, it requires preferential dropping of marked packets to avoid overtermination in case of packet loss.

The benefits of SM are that only a single marking scheme is needed and that only a single DSCP is used. Shortcomings are the fact that CLEBAC cannot block admission requests for empty IEAs, CLEBAC and the specific description of MRT-ITR do not work with multipath routing, and SM requires a large number of flows per IEA that MRT and CLEBAC based on excess marking work well.

C. “Three State Marking” (3sm)

3sm has been presented in [6]. It uses threshold marking based on admissible rates and excess marking with MFR based on supportable rates (see Sect. IV-C1 and Sect. IV-B). General dual marking is used which requires two DSCPs. CLEBAC or OBAC is used for AC and explicit or implicit PBAC-IF may be applied as an alternative (see Sect. VI-B1, Sect. VI-B2, Sect. VI-A). MPT-MFR is used for FT (see Sect. VII-D1). Therefore, preferential dropping of non-ETM-marked packets is beneficial for fast termination, but it is not required to work properly. However, preferential dropping of ETM-marked packets is detrimental.

Shortcomings of 3sm are the fact that it requires two DSCPs for PCN encoding. When used with probing, AC and FT in 3sm work well with multipath routing and with a small number of flows per IEA. 3sm is able to block admission requests for empty IEAs. Moreover, 3sm can be easily adapted for end-to-end PCN.

D. “Packet-Specific Dual Marking” (PSDM)

PSDM has been proposed in [42] and [43]. It uses threshold marking based on admissible rates to possibly re-mark probe packets and excess marking based on supportable rates to possibly re-mark data packets. PSDM encoding is used to mark the packets (see Sect. V-B3), which requires the reuse of only a single DSCP. In an early stage, PBAC-IEA can be used as it is easy to implement (see Sect. VI-C) which allows to block admission requests even for empty IEAs. In a later stage, explicit and implicit PBAC-IF may be used to cope with multipath routing (see Sect. VI-A1 and Sect. VI-A2). Any flow termination method may be used that reacts to marked *SR*-overload. It should be chosen such that multipath routing can be well supported. Preferred packet dropping policies depend on the choice of the FT method.

PSDM requires only a single DSCP, it can work with small number of flows per IEA, it can block admission requests for empty IEAs if necessary, and it works well with multipath routing when the enhanced PBAC methods are used. It also supports end-to-end PCN when MPT-IF is used for FT.

E. “Fractional and Threshold Marking PCN” (FTM-PCN)

FTM-PCN has been proposed in [65]. It uses fractional marking based on the admissible rate and threshold marking based on the supportable rate for marking purposes (see Sect. IV-C1 and Sect. IV-D). Both marking schemes use

baseline encoding so that only a single DSCP needs to be reused for PCN. CLEBAC is used for AC and GFT is used for FT (see Sect. VI-B1 and Sect. VII-C).

The benefit of FTM-PCN is that only a single DSCP is required for PCN marking, but it has also several drawbacks. Its AC method cannot block traffic for empty IEAs, its FT method is either slow or leads to overtermination, and neither AC nor FT work with multipath routing.

F. “Signaling 3 PCN States with Baseline Encoding (3-State-PCN)”

3-State-PCN has been proposed in [28]. It uses threshold marking based on the admissible rate and fractional marking based on the supportable rate for marking purposes (see Sect. IV-C1 and Sect. IV-D). Both marking schemes use baseline encoding so that only a single DSCP needs to be reused for PCN. If egress nodes detect that all packets of an IEA are marked, they infer *AR*-pre-congestion on its path, while if they detect only some marked packets, they infer *SR*-pre-congestion. Therefore, fractional marking must possibly unmark some packets if threshold marking has marked all of them before. Implicit PBAC-IF is applied using a path-coupled per-flow signalling protocol which is not necessarily RSVP (see Sect. VI-A2). An option for FT is GFT (see Sect. VII-C).

The benefit of 3-State-PCN is that only a single DSCP is required for PCN marking and that implicit PBAC-IF can be applied which is useful in some deployment scenarios. However, it has also some known disadvantages: not all flows are blocked in case of *SR*-pre-congestion and *AR*-pre-congestion on consecutive links can erase potential information about *SR*-pre-congestion on previous links by marking all packets.

G. “Load Control PCN” (LC-PCN)

In contrast to other proposals, LC-PCN [71] uses rate measurement on PCN links instead of metering algorithms to detect *AR*- and *SR*-pre-congestion. In case of *AR*-pre-congestion, a traffic rate proportional to the *AR*-overload is AS-marked and CLEBAC is used to perform AC. In addition, LC-PCN also supports PBAC-IF. To make it work with a single probe packet in spite of excess marking, probe packets are recognized by the marking algorithm and explicitly AS-marked in case of *AR*-pre-congestion. LC-PCN implements MRT-DTR with marked *AR*-overload (see Sect. VII-B1b)). To cope better with multipath routing, the marking algorithm is expected to re-mark all non-AS-marked packets to “affected” in case of *SR*-pre-congestion so that the flows to be removed can be chosen from a large set of either AS- or affected-marked flows. LC-PCN optionally AS-marks only a fraction $\frac{1}{N}$ of the *AR*-overload on PCN links, and the PCN egress nodes multiply the rates of AS-marked packets by N . This marking reduction allows to implicitly track lost excess traffic when non-AS-marked packets are preferentially dropped; however, MRT-DTR with marked *AR*-overload requires preferential dropping of AS-marked packets to avoid overtermination. More details are in the draft [71]. LC-PCN works with multipath routing and admission requests can be blocked for empty IEAs when PBAC-IF is used. The major drawbacks of LC-PCN are its complex marking algorithms and the fact that three codepoints are needed which requires the reuse of two DSCPs.

TABLE II
LIST OF ABBREVIATIONS

Acronym	Meaning
AC	admission control
ACL	admission control layer
AR	admissible rate
AS	admission-stop
ASR	rate of AS-marked traffic
CE	congestion experienced
CL	Controlled Load (proposal)
CLE	congestion level estimate
CLEBAC	CLE-based AC
CU	currently unused
DS	differentiated services
DSCP	DS codepoint
ECMP	equal-cost multipath
ECN	explicit congestion notification
ECT	ECN-capable transport
ESR	edge-to-edge supportable rate
ET	excess traffic
ETM	excess-traffic marked
ETR	rate of ET-marked traffic
EWMA	exponentially weighted moving average
EXP	experimental use
FT	flow termination
FTL	flow termination layer
FTM-PCN	Fractional and Threshold Marking PCN (proposal)
IEA	ingress-egress aggregate
IEABAC	IEA-based AC
IETF	Internet Engineering Task Force
IR	ingress rate
LC-PCN	Load Control PCN (proposal)
MFR	marking frequency reduction
MPT	marked-packet based flow termination
MPT-IF	MPT for individual flows
MPT-IEA	MPT for IEAs
MPT-MFR	MPT with MFR
MRT	measured-rate based flow termination
MRT-DTR	MRT with directly measured termination rates
MRT-ESR	MRT with edge-to-edge supportable rates
MRT-ITR	MRT with indirectly computed termination rates
MTU	maximum transfer unit
<i>n</i> ASR	rate of not-AS-marked traffic
<i>n</i> ETR	rate of not-ET-marked traffic
NM	not marked
not-ETM	not-excess-traffic-marked
not-ThM	not threshold-marked
OBAC	observation-based AC
PBAC	probe-based AC
PBAC-IEA	probe-based AC for IEAs
PBAC-IF	probe-based AC for individual flows
PCN	pre-congestion notification
PM	PCN-marked
PML	packet marking layer
PSDM	packet-specific dual marking (proposal)
QoS	quality of service
RED	random early detection
RSVP	Resource reSerVation Protocol
SM	Single-Marking (proposal)
SR	supportable rate
TB	token bucket
TC	traffic class
ThM	threshold marked
TR	termination rate
VOICE-ADMIT	name of a standardized DSCP
3sm	Three-State Marking (proposal)
3-State-PCN	Signaling 3 PCN States with Baseline Encoding (proposal)
3-in-1	3 state encoding in 1 DSCP
3-in-2	3 state encoding in 2 DSCPs
3-in-2-LES	3-in-2 with limited ECN support

IX. SUMMARY

In this paper, we have presented a simplified description of pre-congestion notification (PCN) in an edge-to-edge and end-

to-end context. We provided compact formulations of various marking behaviors, gave insights into problems and solutions with PCN encoding, and provided an ontology of admission control (AC) and flow termination (FT) algorithms. We discussed how they can be combined with different marking behaviors and different configurations thereof and compared their pros and cons. Existing proposals were summarized in the unified PCN terminology of the paper and their benefits and shortcomings were discussed.

The paper provides an overview of most PCN ideas, it improves their understanding by a streamlined nomenclature, clarifies commonalities and differences of existing approaches, and helps to think in terms of design options rather than in terms of fixed-package proposals which fosters the consensus building process in IETF. The paper preserves the wealth of PCN concepts that will be strongly limited by the standardization process.

REFERENCES

- [1] M. H. Ahmed. Call Admission Control in Wireless Networks: A Comprehensive Survey. *IEEE Commun. Surveys Tutorials*, 7(1), 2005.
- [2] W. Almesberger, T. Ferrari, and J.-Y. Le Boudec. SRP: A Scalable Resource Reservation for the Internet. *Computer Communications*, 21(14):1200–1211, Nov. 1998.
- [3] L. Andersson and R. Asati. RFC5462: Multiprotocol Label Switching (MPLS) Label Stack Entry: “EXP” Field Renamed to “Traffic Class” Field, Feb. 2009.
- [4] I. Ari, B. Hong, E. L. Miller, S. A. Brandt, and D. D. E. Long. Managing Flash Crowds on the Internet. In *International Symposium on Modeling, Analysis and Simulation of Computer and Telecommunication Systems (MASCOTS)*, Orlando, FL, USA, Oct. 2003.
- [5] B. Briscoe et al. An Edge-to-Edge Deployment Model for Pre-Congestion Notification: Admission Control over a DiffServ Region. <http://tools.ietf.org/id/draft-briscoe-tsvwg-cl-architecture-04.txt>, Oct. 2006.
- [6] J. Babiarz, X.-G. Liu, K. Chan, and M. Menth. Three State PCN Marking. <http://tools.ietf.org/html/draft-babiarz-pcn-3sm>, Nov. 2007.
- [7] F. Baker, C. Iturralde, F. Le Faucheur, and B. Davie. RFC3175: Aggregation of RSVP for IPv4 and IPv6 Reservations, Sept. 2001.
- [8] F. Baker, J. Polk, and M. Dolly. DSCPs for Capacity-Admitted Traffic. <http://tools.ietf.org/id/draft-ietf-tsvwg-admitted-realtime-dscp>, Mar. 2010.
- [9] Y. Bernet, P. Ford, R. Yavatkar, F. Baker, L. Zhang, M. Speer, R. Braden, B. Davie, J. Wroclawski, and E. Felstaine. RFC2998: A Framework for Integrated Services Operation over DiffServ Networks, Nov. 2000.
- [10] S. Blake, D. L. Black, M. A. Carlson, E. Davies, Z. Wang, and W. Weiss. RFC2475: An Architecture for Differentiated Services, Dec. 1998.
- [11] B. Braden, L. Zhang, S. Berson, S. Herzog, and S. Jamin. RFC2205: Resource ReSerVation Protocol (RSVP) - Version 1 Functional Specification, Sept. 1997.
- [12] B. Braden et al. RFC2309: Recommendations on Queue Management and Congestion Avoidance in the Internet, Apr. 1998.
- [13] B. Briscoe. Tunnelling of Explicit Congestion Notification. <http://tools.ietf.org/html/draft-ietf-tsvwg-ecn-tunnel>, Mar. 2010.
- [14] B. Briscoe, P. Eardley, D. Songhurst, F. L. Faucheur, A. Charny, J. Babiarz, K. Chan, S. Dudley, G. Karagiannis, A. Bader, and L. Westberg. Pre-Congestion Notification Marking. <http://www.ietf.org/internet-drafts/draft-briscoe-tsvwg-cl-phb-03.txt>, Oct. 2006.
- [15] B. Briscoe and T. Moncaster. PCN 3-State Encoding Extension in a single DSCP. <http://www.ietf.org/internet-drafts/draft-ietf-pcn-3-in-1-encoding-02.txt>, Mar. 2010.
- [16] K. Chan, G. Karagiannis, T. Moncaster, M. Menth, P. Eardley, and B. Briscoe. Pre-Congestion Notification Encoding Comparison. <http://tools.ietf.org/html/draft-ietf-pcn-encoding-comparison>, Mar. 2010.
- [17] A. Charny, F. L. Faucheur, V. Liatsos, and J. Zhang. Pre-Congestion Notification Using Single Marking for Admission and Preemption. <http://tools.ietf.org/id/draft-ietf-pcn-single-marking-03.txt>, Nov. 2007.
- [18] A. Charny, F. Huang, G. Karagiannis, M. Menth, and T. Taylor. PCN Boundary Node Behavior for the Controlled Load (CL) Mode of Operation. <http://tools.ietf.org/html/draft-ietf-pcn-cl-edge-behaviour>, Mar. 2010.

- [19] A. Charny, J. Zhang, G. Karagiannis, M. Menth, and T. Taylor. PCN Boundary Node Behavior for the Single-Marking (SM) Mode of Operation. <http://tools.ietf.org/html/draft-ietf-pcn-sm-edge-behaviour>, Mar. 2010.
- [20] X. Chen and J. Heidemann. Flash Crowd Mitigation via Adaptive Admission Control Based on Application-Level Observation. *ACM Trans. Internet Technology*, 5(3):532–562, Aug. 2005.
- [21] P. Cholda, A. Mykkeltveit, B. E. Helvik, O. J. Wittner, and A. Jajszczyk. A Survey of Resilience Differentiation Frameworks in Communication Networks. *IEEE Commun. Surveys Tutorials*, 9(4):32–55, 2007.
- [22] S. Deering and R. Hinden. RFC2460: Internet Protocol Version 6 (IPv6) Specification, Dec. 1998.
- [23] P. Eardley. Traffic Matrix Scenario. <http://www.ietf.org/mail-archive/web/pcn/current/msg00831.html>, Oct. 2007.
- [24] P. Eardley (Ed.). RFC5559: Pre-Congestion Notification (PCN) Architecture, June 2009.
- [25] P. Eardley (Ed.). RFC5670: Metering and Marking Behaviour of PCN Nodes, Nov. 2009.
- [26] S. Floyd. RFC4774: Specifying Alternate Semantics for the Explicit Congestion Notification (ECN) Field, Feb. 2007.
- [27] S. Floyd and V. Jacobson. Random Early Detection Gateways for Congestion Avoidance. *IEEE/ACM Trans. Netw.*, 1(4):397–413, Aug. 1993.
- [28] R. Geib. Signaling 3 PCN States with Baseline Encoding. <http://tools.ietf.org/id/draft-geib-baseline-encoding-3state-00.txt>, Sept. 2008.
- [29] R. J. Gibbens and F. P. Kelly. Distributed Connection Acceptance Control for a Connectionless Network. In *16th International Teletraffic Congress (ITC)*, pages 941 – 952, Edinburgh, UK, June 1999.
- [30] R. J. Gibbens and F. P. Kelly. Resource Pricing and the Evolution of Congestion Control. *Automatica*, 35(12):1969–1985, 1999.
- [31] S. Iyer, S. Bhattacharyya, N. Taft, and C. Diot. An Approach to Alleviate Link Overload as Observed on an IP Backbone. In *IEEE Infocom*, San Francisco, CA, April 2003.
- [32] V. Jacobson, K. Nichols, and K. Poduri. RFC2598: An Expedited Forwarding PHB, June 1999.
- [33] J. Jung, B. Krishnamurthy, and M. Rabinovich. Flash Crowds and Denial of Service Attacks: Characterization and Implications for CDNs and Web Sites. In *International World Wide Web Conference (WWW)*, Honolulu, Hawaii, USA, May 2002.
- [34] M. Karsten and J. Schmitt. Admission Control based on Packet Marking and Feedback Signalling – Mechanisms, Implementation and Experiments. Technical Report 03/2002, Darmstadt University of Technology, 2002.
- [35] M. Karsten and J. Schmitt. Packet Marking for Integrated Load Control. In *IFIP/IEEE Symposium on Integrated Management (IM)*, 2005.
- [36] F. Kelly, P. Key, and S. Zachary. Distributed Admission Control. *IEEE J. Sel. Areas Commun.*, 18(12):2617–2628, 2000.
- [37] F. Lehrieder and M. Menth. Marking Conversion for Pre-Congestion Notification. In *IEEE International Conference on Communications (ICC)*, Dresden, Germany, June 2009.
- [38] F. Lehrieder and M. Menth. PCN-Based Flow Termination with Multiple Bottleneck Links. In *IEEE International Conference on Communications (ICC)*, Dresden, Germany, June 2009.
- [39] S. R. Lima, P. Carvalho, and V. Freitas. Admission Control in Multi-service IP Networks: Architectural Issues and Trends. *IEEE Commun. Mag.*, 45(4):114 – 121, Apr. 2007.
- [40] R. Martin, M. Menth, and M. Hemmkepler. Accuracy and Dynamics of Hash-Based Load Balancing Algorithms for Multipath Internet Routing. In *IEEE International Conference on Broadband Communication, Networks, and Systems (BROADNETS)*, San Jose, CA, USA, Oct. 2006.
- [41] M. Menth. *Efficient Admission Control and Routing in Resilient Communication Networks*. PhD thesis, University of Würzburg, Faculty of Computer Science, July 2004.
- [42] M. Menth. Deployment Models for PCN-Based Admission Control and Flow Termination Using Packet-Specific Dual Marking (PSDM). <http://tools.ietf.org/html/draft-menth-pcn-psdm-deployment>, Oct. 2008.
- [43] M. Menth, J. Babiarz, and P. Eardley. Pre-Congestion Notification Using Packet-Specific Dual Marking. In *International Workshop on the Network of the Future (Future-Net)*, Dresden, Germany, June 2009.
- [44] M. Menth, J. Babiarz, T. Moncaster, and B. Briscoe. PCN Encoding for Packet-Specific Dual Marking (PSDM). <http://tools.ietf.org/html/draft-ietf-pcn-psdm-encoding>, June 2009.
- [45] M. Menth and M. Hartmann. Threshold Configuration and Routing Optimization for PCN-Based Resilient Admission Control. *Computer Networks*, 53(11):1771 – 1783, July 2009.
- [46] M. Menth, S. Kopf, J. Charzinski, and K. Schrodi. Resilient Network Admission Control. *Computer Networks*, 52(14):2805–2815, Oct. 2008.
- [47] M. Menth and F. Lehrieder. Comparison of Marking Algorithms for PCN-Based Admission Control. In *14th GI/ITG Conference on Measuring, Modelling and Evaluation of Computer and Communication Systems (MMB)*, pages 77–91, Dortmund, Germany, Mar. 2008.
- [48] M. Menth and F. Lehrieder. Performance Evaluation of PCN-Based Admission Control. In *International Workshop on Quality of Service (IWQoS)*, Enschede, The Netherlands, June 2008.
- [49] M. Menth and F. Lehrieder. Applicability of PCN-Based Admission Control. Technical Report, No. 468, University of Würzburg, Institute of Computer Science, Mar. 2010.
- [50] M. Menth and F. Lehrieder. PCN-Based Marked Flow Termination. Technical Report, No. 469, University of Würzburg, Institute of Computer Science, Mar. 2010.
- [51] M. Menth and F. Lehrieder. Performance Evaluation of PCN-Based Flow Termination. *accepted for Computer Networks*, 2010.
- [52] M. Menth, F. Lehrieder, P. Eardley, A. Charny, and J. Babiarz. Edge-Assisted Marked Flow Termination. <http://tools.ietf.org/html/draft-menth-pcn-emft>, Feb. 2008.
- [53] M. Menth, R. Martin, and J. Charzinski. Capacity Overprovisioning for Networks with Resilience Requirements. In *ACM SIGCOMM*, Pisa, Italy, Sept. 2006.
- [54] T. Moncaster, B. Briscoe, and M. Menth. RFC5696: Baseline Encoding and Transport of Pre-Congestion Information, Nov. 2009.
- [55] T. Moncaster, B. Briscoe, and M. Menth. A PCN Encoding Using 2 DSCPs to Provide 3 or More States. <http://tools.ietf.org/html/draft-ietf-pcn-3-state-encoding>, Feb. 2010.
- [56] K. Nichols, S. Blake, F. Baker, and D. L. Black. RFC2474: Definition of the Differentiated Services Field (DS Field) in the IPv4 and IPv6 Headers, Dec. 1998.
- [57] J. Postel. RFC791: Internet Protocol, Aug. 1981.
- [58] S. Rai, B. Mukherjee, and O. Deshpande. IP Resilience within an Autonomous System: Current Approaches, Challenges, and Future Directions. *IEEE Commun. Mag.*, 43(10):142–149, Oct. 2005.
- [59] K. Ramakrishnan and S. Floyd. RFC2481: A Proposal to Add Explicit Congestion Notification (ECN) to IP, Jan. 1999.
- [60] K. Ramakrishnan, S. Floyd, and D. Black. RFC3168: The Addition of Explicit Congestion Notification (ECN) to IP, Sept. 2001.
- [61] E. Rosen, D. Tappan, G. Fedorkow, Y. Rekhter, D. Farinacci, T. Li, and A. Conta. RFC3032: MPLS Label Stack Encoding, Jan. 2001.
- [62] S. Ryu, C. Rump, and C. Qiao. Advances in Internet Congestion Control. *IEEE Commun. Surveys Tutorials*, 5(1), 2003.
- [63] S. Kent and K. Seo. RFC4301: Security Architecture for the Internet Protocol, Dec. 2005.
- [64] Z. Sarker and I. Johansson. Usecases and Benefits of end to end ECN support in PCN Domains. <http://www.ietf.org/internet-drafts/draft-sarker-pcn-ecn-usecases-01.txt>, May 2008.
- [65] D. Satoh, Y. Maeda, O. Phanachet, and H. Ueno. Single PCN Threshold Marking by Using PCN Baseline Encoding for Both Admission and Termination Controls. <http://tools.ietf.org/id/draft-satoh-pcn-st-marking-01.txt>, Mar. 2009.
- [66] K. Shiimoto, N. Yamanaka, and T. Takahashi. Overview of Measurement-Based Connection Admission Control Methods in ATM Networks. *IEEE Commun. Surveys Tutorials*, 2(1), 1999.
- [67] D. J. Songhurst, P. Eardley, B. Briscoe, C. di Cairano Gilfedder, and J. Tay. Guaranteed QoS Synthesis for Admission Control with Shared Capacity. technical report TR-CXR9-2006-001, BT, Feb. 2006.
- [68] N. Spring, D. Wetherall, and D. Ely. RFC3540: Robust Explicit Congestion Notification (ECN), June 2003.
- [69] I. Stoica and H. Zhang. Providing Guaranteed Services without per Flow Management. In *ACM SIGCOMM*, Boston, MA, Sept. 1999.
- [70] R. Szabó, T. Henk, V. Rexhepi, and G. Karagiannis. Resource Management in Differentiated Services (RMD) IP Networks. In *International Conference on Emerging Telecommunications Technologies and Applications (ICETA 2001)*, Kosice, Slovak Republic, Oct. 2001.
- [71] L. Westberg, A. Bhargava, A. Bader, G. Karagiannis, and H. Mekkes. LC-PCN: The Load Control PCN Solution. <http://tools.ietf.org/id/draft-westberg-pcn-load-control-05.txt>, Nov. 2008.
- [72] S. Wright. Admission Control in Multi-Service IP Networks: A Tutorial. *IEEE Communications Surveys & Tutorials*, 9(1), 2007.
- [73] J. Zhang, A. Charny, V. Liatsos, and F. L. Faucher. Performance Evaluation of CL-PHB Admission and Pre-emption Algorithms. <http://www.ietf.org/internet-drafts/draft-zhang-pcn-performance-evaluation-02.txt>, July 2007.
- [74] X. Zhang and A. Charny. Performance Evaluation of Pre-Congestion Notification. In *International Workshop on Quality of Service (IWQoS)*, Enschede, The Netherlands, June 2008.

Michael Menth studied computer science and mathematics at the University of Wuerzburg/Germany and Austin/Texas. He worked at the University of Ulm/Germany and Wuerzburg and obtained his Ph.D. in 2004. Since then he has been assistant professor and heading the research group “Next Generation Networks” at the Institute of Computer Science in Wuerzburg. His special interests are performance analysis, optimization of communication networks, resource management, resilience issues, and future Internet. Dr. Menth holds numerous patents and patent applications and received various scientific awards for innovative work.

Frank Lehrieder studied computer science and business administration at the Universities of Wuerzburg/Germany and Madrid/Spain and received his diploma degree in computer science in 2008. Since then, he has been a researcher at the Institute of Computer Science in Wuerzburg and pursuing his Ph.D. His special interests are performance evaluation and resource management for future Internet infrastructures.

Bob Briscoe is chief researcher in BT’s Networks Research Centre and leads BT’s Future Communications Architecture programme, using expertise in engineering, economic and social control of computing networks. In the late-1980s, he managed the transition to IP of many of BT’s R&D networks and systems. In 2000, he set-up and led the Market Managed Multi-service Internet (M3I) consortium. He also helped incubate Qariba, an on-demand bandwidth start-up that BT re-absorbed to create its Internet QoS products. In 2003, he initiated the Communications Research Network (CRN) to remove blockages to the future health of the industry. He is heavily involved in re-defining the Internet architecture, particularly through IETF standardisation.

Philip Eardley works in BT’s Networks Research Centre. He is technical manager of the European collaborative Trilogy project, trilogy-project.org, and also active at the IETF, particularly in the PCN working group. His research interests include future Internet architecture, resource control and accountability, inter-domain routing, and the impact on these technical topics of commercial and social control. Previous research interests include IP mobility, free space optical communications, and erbium doped fibre amplifiers.

Toby Moncaster is a researcher in the Networks Research Centre of BT Innovate. Most of his work is in the field of network and transport protocol design and simulation. He is particularly interested in the field of network accountability. He is an active participant in the IETF, particularly in the PCN and Transport Area working groups. He received his M.Eng. degree in Electronics and Telecommunications from the University of Essex.

Jozef Babiarz graduated with honors in electronics engineering technology at Mohawk College in 1979. He is responsible for advanced technology development at Nortel. His current focus is on technologies enabling ubiquitous wireless access within the campus using IEEE 802.11. Prior to this, Jozef performed research and development of measurement-based admission control in IP networks. He has over 25 years experience in the development of various technologies for networking and telecommunication markets.

Anna Charny obtained a B.Sc. in applied mathematics from the Institute of Physics and Technology in Moscow, Russia, and a M.Sc. in mathematics from the State University in Tver, Russia. She holds a M.Sc. and a Ph.D. in computer science from the Massachusetts Institute of Technology (Cambridge, MA). She worked as a research associate at Moscow State University in Russia from 1986-1987 and was a visiting professor at the Imperial College of London from 2004-2006. She was principal engineer at Digital Equipment Corporation in Littleton, MA, from 1994-1998 and at Cabletron Systems in Andover, MA, from 1998-1999. Since 1999 she is technical leader at Cisco Systems in Boxborough, MA. Dr. Charny holds multiple US patents and patent applications. Her special interests are network algorithms and performance evaluation with emphasis on quality of service, scheduling algorithms, traffic management, traffic engineering and optimization.

Xinyang (Joy) Zhang studied computer science and statistics at Cornell University and obtained her Ph.D. in 2009. Her research interests are performance evaluation, quality of service, and Internet routing. She is currently a researcher at Cisco Systems.

Tom Taylor obtained a M.Sc. in Mathematics in 1963. After spending ten years as an operations research analyst in industry, government, and academia he joined Bell-Northern Research, subsequently merged into its parent Nortel Networks, in 1973. He retired from Nortel in 2007 and has since been a consultant to that company and to Huawei Technologies. Tom has been active in IP-related standards for the last twelve years, particularly as they relate to VoIP and multimedia services. He is currently co-Chair of the IETF Audio Video Transport Working Group and Rapporteur, Security Coordination, in ITU-T Study Group 11.

Kwok Ho Chan received a B.Sc. from Columbia University in New York City, USA. He has been working for over 25 years as an architect, researcher, and implementor of IP technologies for Nortel, Bay Networks, and Wellfleet Communications and works now for Huawei Technologies in the USA. His focus is on QoS and network resource management for transport networks. He has been participating in IETF for more than 10 years.

Daisuke Satoh graduated from Waseda University with the B.E. and M.E. degrees in electronics and communication engineering in 1992 and 1994, respectively, and received a Ph.D. in information and computer science in 2002. He joined NTT in 1994. Currently he is working as a senior engineer on teletraffic issues in NTT Advanced Technology Corp. His research interests include teletraffic issues, software reliability and theory, and application of finite difference. Dr. Satoh is a member of IEICE, JSIAM, and the Operations Research Society of Japan.

Ruediger Geib is a senior R&D engineer of Deutsche Telekom Network Production’s center for technical engineering and works on Internet backbone QoS architecture. He started to investigate measurement-based admission control for network sections operating DiffServ-based QoS in 2003 and is a founding member of IETF’s PCN working group. He is active on many network-centric end-to-end IP QoS topics ranging from data forwarding, control plane to service validation, and data provisioning for accounting and network planning.

Georgios Karagiannis holds a M.Sc. degree (1993) and a Ph.D. degree (2002) in electrical engineering from the University of Twente, the Netherlands. From 1994 to 1998 he was working as a researcher and since 2003 as an assistant professor at the Design and Analysis of Communication Systems (DACS) group at the same university. In between he was working in the Wireless Multimedia Research unit of Ericsson Eurolab in Enschede, the Netherlands. His research interests are in the fields of fixed, mobile and wireless (inter)networking, end-to-end QoS signaling and provisioning, mobility and routing in vehicular communication networks, and performance evaluation.