



THE UNIVERSITY *of* EDINBURGH

Edinburgh Research Explorer

A systematic review and meta-analysis of poor sleep, insomnia symptoms and stress in undergraduate students

Citation for published version:

Gardani, M, Bradford, DRR, Russell, K, Allan, S, Beattie, L, Ellis, JG & Akram, U 2022, 'A systematic review and meta-analysis of poor sleep, insomnia symptoms and stress in undergraduate students', *Sleep medicine reviews*, vol. 61, 101565. <https://doi.org/10.1016/j.smrv.2021.101565>

Digital Object Identifier (DOI):

[10.1016/j.smrv.2021.101565](https://doi.org/10.1016/j.smrv.2021.101565)

Link:

[Link to publication record in Edinburgh Research Explorer](#)

Document Version:

Peer reviewed version

Published In:

Sleep medicine reviews

General rights

Copyright for the publications made accessible via the Edinburgh Research Explorer is retained by the author(s) and / or other copyright owners and it is a condition of accessing these publications that users recognise and abide by the legal requirements associated with these rights.

Take down policy

The University of Edinburgh has made every reasonable effort to ensure that Edinburgh Research Explorer content complies with UK legislation. If you believe that the public display of this file breaches copyright please contact openaccess@ed.ac.uk providing details, and we will remove access to the work immediately and investigate your claim.



A systematic review and meta-analysis of poor sleep, insomnia symptoms and stress in undergraduate students

Gardani M*¹, Bradford D.R.R.², Russell K³, Allan S⁴, Beattie L⁴, Ellis, J.⁵, Akram U⁶

¹ School of Health in Social Science, University of Edinburgh, UK

² MRC/CSO Social and Public Health Sciences Unit, University of Glasgow

³ School of Psychological Sciences and Health, University of Strathclyde, UK

⁴ Institute of Health and Wellbeing, University of Glasgow, UK

⁵ Department of Psychology, Faculty of Health & Life Sciences, Northumbria University, UK

⁶ Department of Psychology, Sociology and Politics, Sheffield Hallam University, UK

For submission to: Sleep Medicine Reviews

Words: 5363 (main body) + Tables

References: 95

Number of Tables: 2

Number of Figures: 5

*Corresponding author contact details

Dr Maria Gardani: School of Health in Social Science, University of Edinburgh, Old Medical House, Teviot Pl,

Email: mgardani@exseed.ed.ac.uk

Summary

University students experience high prevalence of mental health problems and exacerbation of mental health difficulties, including sleep disturbances and stress during their studies. Stress and poor sleep quality and/or insomnia are interlinked outcomes for this population. The aim was to conduct a systematic review, and meta-analyses, of the relationships between sleep quality and/or insomnia with stress in students.

Full-text articles of studies exploring the associations of stress with poor sleep quality and/or insomnia in undergraduate students using validated tools and published in peer-reviewed journals were eligible for inclusion.

Thirty-four studies, resulting in 37 effect sizes, included and all were suitable for meta-analysis. The weighted pooled effect size between sleep quality and stress was for .39 (25 studies, $n = 10,065$), whereas a slightly higher pooled association of .41 was demonstrated for insomnia and stress (12 studies, $n = 5,564.5$).

Pooled associations show moderate effects for associations between sleep quality, insomnia and stress in undergraduate students. High heterogeneity in meta-analyses was found, suggesting the findings should be considered cautiously. Future research should focus on longitudinal studies exploring sleep difficulties across the academic year, whilst university services should consider psychoeducation for stress and sleep in university students, especially during transition to university.

Abstract: 200 words

Keywords: Sleep; Insomnia; Sleep initiation and maintenance disorder; Stress; University; Student; Undergraduate

List of Abbreviations

AIS – Athens insomnia scale

BDI - Beck's depression inventory

CES - Center for epidemiologic studies depression scale

DASS - Depression anxiety stress scale

ESM – Experience sampling methodologies

ESS - Epworth sleepiness scale

GAD – General anxiety disorder

HPA - Hypothalamic-pituitary-adrenocortical

ICSRLE - Inventory of college students' recent life experiences

ISI – Insomnia severity index

MeSH- Medical Subject Headings

MSQ-I - Mini sleep questionnaire – insomnia

SCI – Sleep condition indicator

STAI - State trait anxiety inventory

PHQ - Patient health questionnaire

PSS – Perceived stress scale

PSQI - Pittsburgh sleep quality index

USQ - Undergraduate stress questionnaire

QIDS - Quick inventory of depressive symptomatology

Introduction

University and college students are particularly vulnerable to psychological distress and the exacerbation, or first onset, of mental health difficulties [1]. In individuals that are studying for a degree in higher education stress levels were associated with poorer quality of life and well-being [2]. Over the past five years, poor mental well-being and distress appear to be rising in this population [3] with the most prominently reported difficulties including stress, anxiety, depression, suicidal ideation, and insomnia symptoms [1]. University and college students report insufficient sleep or poor subjective sleep quality [4], with recent evidence showing that approximately 30% of students meet criteria of insomnia [5]. Considering how poor sleep or lack of sleep opportunity negatively affects cognitive functions [6], it is no surprise that poor sleep is associated with decreased academic performance in young adults [7]. Recent evidence highlights the importance of longer, regular sleep as a positive contributor to academic performance in university students [8].

Sleep and stress are closely linked, at multiple levels, with current evidence supporting a bidirectional association between sleep and stress [9]. Experiences of stress are linked to appraisals of potential environmental threat and the stress reaction involves the autonomic nervous system and hypothalamic-pituitary-adrenocortical (HPA) activity [10]. Hyperactivity of HPA is evident in several clinical conditions including depression and insomnia [11]. Transitions between wakefulness and sleep states involve sleep- and wake-promoting networks, such as the ascending arousal system [12], which are altered in insomnia and are primarily linked to hyperarousal [13].

Stress is the mental or emotional pressure experienced when an individual is faced with adverse or demanding circumstances that are perceived to or exceed their ability to cope [14]. Stressful events are considered as precipitating factors for the onset of insomnia [15] alongside the individual's resources to manage the stressor encountered [16]. These observations have driven several theoretical models on the onset and maintenance of insomnia in variations of the initial stress-diathesis model, also known as "3P model" put forward by Spielman et al. [15]. Specifically, this model describes predisposing, precipitating, and perpetuating factors in the development and maintenance of insomnia. These factors may be biological, behavioural, environmental, or psychological in nature. Perlis et al, (1997) links transient stress to acute insomnia via the psychophysiological activation of the hyperarousal system [17], whereas the attention-intention-effort pathway links stress system activation to sleep disruption which becomes an attentional focus [18]. These models account for the development of chronic insomnia following instances of acute insomnia and early insomnia, which develops as a biopsychosocial response to a perceived or actual stressor [19]. Several factors have been identified to contribute to the transition from acute to chronic insomnia [20], including markers linked to the stress response such as blood pressure, respiratory rate, and activation of the HPA axis in those with a predisposition for insomnia [21,22].

The majority of student population face many stressors that may contribute to the experience of poor sleep quality, insomnia and stress, including the ever-increasing cost of living and tuition fees that expose students to financial strain which may be related to socioeconomic status [23]. Transitioning to university level study in some cases is perceived as a stressor in its own right as it is accompanied by a higher degree of academic independence (e.g., less structured methods of learning) and expectations (e.g., capability, quality) [24]. Furthermore, personal independence may be associated with late night social and activities related to university culture could provide an opportunity for (increased) alcohol intake and possible substance abuse [24] that is associated with poor sleep quality in this population cohort [25]. Finally, the experience of overlapping deadlines and late working hours, albeit study or part-time work, inherently contributes to circadian disruption. Taken together, these factors likely contribute to an environment that precipitates not only the experience of stress, but also disturbed sleep [1].

To date no systematic review has explored the association of poor sleep quality and/or insomnia with stress in undergraduate students. Despite the plethora of studies investigating the presence of sleep disturbances in student populations, no single study has systematically evaluated the findings and attempted to synthesise and report a pooled level of association. The current review aims to systematically evaluate the quality of this evidence base, summarize methodological features, and conduct meta-analyses of poor sleep quality and insomnia associations with stress in undergraduate university students.

Methods

The protocol was registered with the International Prospective Register of Systematic Reviews (PROSPERO; registration CRD42018111665) and the Preferred Reporting Items for Systematic Reviews and Meta-analysis (PRISMA) [26] was followed as guidance for the searching and reporting. Searches were performed by MG. MG and DB independently screened titles and abstracts. Hand searches were carried out by MG and KR on the reference lists of the included studies with the full texts of any new studies screened against the inclusion exclusion criteria. Each full text was screened by two authors blindly (so all papers were reviewed in combinations of the authors in pairs MG, DB, KR, UA, SA). Any disagreements were settled by discussion between reviewers or the decision by the first author (MG). KR, LB and SA performed quality assessment. Results were synthesised by MG and meta-analyses were conducted by DB.

Search strategy

In consultation with a librarian a concept-based literature search was conducted using keywords relating to sleep and stress in undergraduate students. The literature search was conducted on five electronic databases [Medline (Ovid), Web of Science (Core), Embase (Ovid), PsychInfo (Ebsco) and PsychArticles (Ebsco)] up to 13th January 2020. The search strategy was developed by the research team using keywords and medical subject heading terms (MeSH) to encompass sleep disturbances and insomnia and stress alongside population specific keywords for university and college undergraduate students (see supplementary material).

Study inclusion criteria

Pre-registered eligibility criteria, as per our systematic review protocol (https://www.crd.york.ac.uk/prospero/display_record.php?RecordID=111665), were applied throughout the screening process to determine eligibility of articles for inclusion in the review, based on P(IC)OS (see below). When reviewers were unable to determine eligibility directly from the publication, they contacted the study authors to request further clarifications.

Population

Only studies that included participants that were undergraduate students were eligible for inclusion. When studies reported mixed student cohorts, e.g. comprised of undergraduate and postgraduate students or not enough information was reported, the authors of the study were contacted for clarification. Studies were excluded if authors did not respond or could not provide a detailed breakdown of sample demographics.

Outcome measures

The main outcome of interest of this review is the association of sleep quality and insomnia (diagnosis or symptoms) with stress in undergraduate students. Only studies that investigated these associations were included in the review. When the effects of the associations were not reported in the full-text, the authors contacted the study authors for further details. Studies were included only if they used validated measures for all outcomes of interest (sleep quality, insomnia, and stress).

Type of study

Only full-text original empirical studies published in English in peer-reviewed journals were eligible for inclusion in the review. Reviews, meta-analyses, comments, replies, clinical guidelines, conference abstracts, theses, editorial letters, and book chapters were excluded from the review as well as grey literature.

Study design

All studies that explored an association between sleep quality, insomnia and stress were included in the review. When studies collected data using a longitudinal or interventional design only data at baseline were considered.

Data Extraction

A template was designed and piloted for the data extraction by the first author to ensure that all important findings to inform the data synthesis and meta-analyses were captured. Data extraction was done by all the authors. Extracted data included i) citation details (authors, publication year), ii) study setting, iii) sample characteristics (age, gender, size), iv) outcome measures for sleep quality, insomnia and stress, v) outcome measures for comorbidities when reported (anxiety and depression), and vi) effect sizes and type of statistical analyses reported (correlation/association coefficient or simple linear regression coefficient within the range $\pm .50$ as recommendations) [27].

Assessment of risk of bias

To critically appraise the studies, an adapted version of the Newcastle Ottawa Scale was employed. The scale was modified in order to reflect the inclusion criteria so that the quality was determined with relevance to the research designs of the potentially identified studies. Firstly, as the decision was taken to only include studies that utilised validated measures of sleep and stress, the scale items assessing “ascertainment of exposure” and “assessment of the outcome” were removed. Secondly, as correlation/association coefficients were the effect size estimates chosen for the meta-analysis, the scale item pertaining to adjusting for confounding factors was also excluded. Assessment criteria relating to the methodological quality of the studies was based on a framework that has been utilised in previous work [28]. This instrument has two sets of criteria (methodology and analysis) and is included in the supplementary material of this review. Quality ratings ranging from 0 to 2 indicated low quality, 3–5 moderate quality, and 6–8 high quality. Agreement between reviewers was very high (Kappa=0.87).

Data analysis

The primary approach was to produce a systematic narrative review of the results from the included studies, accompanied by tabulated details of the included studies as well as the quality ratings for the included studies. Meta-analysis techniques, as detailed below, were used to pool the reported associations. The main group analyses focus on associations of 1) insomnia and stress and 2) sleep quality and stress, based on the outcome measures employed by the respective studies.

To estimate a pooled effect size across all included studies, the correlation/association coefficients were extracted from each study along with the sample size. When multiple effect sizes were reported for the same construct within a primary study (e.g., where two measures of stress were used) they were averaged. One study [29] used the reverse-scored Sleep Condition Indicator so the sign of sleep-related effect sizes extracted from this study was multiplied by -1 . When correlation/association coefficients had a skewed distribution, effect sizes were converted to Fisher's Z scores to achieve a normal distribution. All effect sizes extracted from primary studies and used in the meta-analysis were continuous (correlation, association, or linear regression coefficients). Meta-analyses were carried out using R v.3.6.3 [30] and a random effects model fitted using the *metafor* package [31]. Weighted pooled effect sizes (and 95 CIs) are reported as Pearson's correlation coefficients which have been back-transformed from Fisher's Z scores. The data were inspected for outliers and influential studies. Heterogeneity was assessed using the I^2 statistic. An I^2 was classed to indicate low (25%), medium (50%) or large (75%) heterogeneity [32]. Subgroup analyses were performed to investigate potential sources of heterogeneity. Publication bias was assessed using Egger's regression test and Kendall's rank correlation coefficient.

Results

A total of 3,910 studies were identified and following removal of duplicates using Endnote (Version X8.2) 2,432 studies were screened independently by two authors using Rayann [33]. Following hand searching of the final included studies, six additional studies were added in the full screening database resulting in a total of 2,438 studies. Title screening resulted in 2,182 studies were excluded leaving 256 papers for full text screening. Of the 256 available papers, 222 were excluded based on the *a priori* criteria. Of note, 76 studies were excluded as at least one measure used was not validated and sleep or stress was explored via single item questions or Likert scale responses, such as "How do you rate your sleep quality?". In total 18 studies were not available despite various attempts to source manuscripts, leaving a remaining 34 studies for inclusion in the data synthesis (Figure 1). Agreement between reviewers on title screening was calculated at 92%. Crude collated inter-rater agreement between all pairs of reviewers was 96.3%; Cohen's Kappa = 0.85; Scott's Pi = 0.85 [34].

Study authors were emailed to request supplementary results or data where clear associations were not reported, or if clarification was required as per the inclusion criteria (e.g., confirming whether samples referred to as "students" exclusively comprised undergraduate students. Ten of the 34 [29,35–43] studies were included after study authors provided clarifications, statistics, or additional data by email.

[Figure 1- PRISMA flow chart]

Study characteristics

Details of study characteristics are presented in Table 1 and included a total of n=14,704 undergraduate student participants. The majority of the studies were cross-sectional (n=32) with only two longitudinal studies [37,42] including one intervention study [37]. All studies except one [44] reported mean age and standard deviation of the participants. The weighted mean age across studies (excluding [44], n=14,245) was 21.7y (range 18.4-26.9). The weighted mean percentage of females across all studies (including [44]) was 69.2% (range 24-93).

[Insert Table 1]

Study setting

The studies included were recent, ranging from 2010 to 2020 [45]. The geographical location of the studies varied widely with the majority of (n=15) studies conducted in North America [37,44,46–58]. The remaining studies were based in Iran (n=3) [39,41,59], Saudi Arabia (n=2) [35,36], India (n=2) [59,60], and one taking place in each of Australia, Canada, China, Egypt, Germany, Poland, South Korea, Sweden and the UK (n=9) [29,42,43,62–67].

Outcomes of Sleep Quality, Insomnia and Stress

Six studies used multiple sleep measures; four of these used two sleep measures [46–48,54] and two studies used three [29,50]. Most of the studies [29,35,37–40,42–52,54–56,58,62–64,66] (n = 25) used the Pittsburgh Sleep Quality Index (PSQI) [68]. Ten (n=10) studies [29,41,47,50,53,54,57,59,60,69] used the Insomnia Severity Index (ISI) [70], and one for each of the Athens Insomnia Scale (AIS) [71], Mini Sleep Questionnaire – Insomnia (MSQ-I) [72], and Sleep Condition Indicator (SCI) [73] were reported.

One study measured stress using two instruments [47] whereas all others used a single measurement for stress. Across the 44 reported associations of sleep and stress – where by sleep here indicated measures of sleep quality and insomnia combined, variants of the Perceived Stress Scale (PSS) [74] were most commonly employed (n=28) with PSS-10 used in 15 studies (n = 15) [36,38,43,45–49,52,53,57–59,65,67], PSS-14 in four studies (n=4) [29,40,50,51] and the PSS-4 in two (n=2) [37,55]. Different versions of the Depression Anxiety Stress Subscale (DASS) [75] were used in ten studies (n=10) with the DASS-21 used in nine (n=9) [35,39,41,42,44,54,63,64,69,69] and the DASS-42 in one (n=1) [60]. Two studies (n=2) used the Inventory of College Students' Recent Life Experiences (ICSRLE) [47,56], one (n=1) used the Undergraduate Stress Questionnaire (USQ) [62], and another

(n=1) used the stress component of the Patient Health Questionnaire- Deutsche (PHQ-Deutsche) [66].

Sleep quality and stress main results

Twenty-six effect sizes relating sleep quality to stress (range 0.19-0.55) all using the PSQI were generated across 25 studies (as above) with one study [47] reporting two effect sizes (as these authors collected two stress measures, PSS-10 and ICSRLE). Stress was measured using variants of the PSS and resulting in 15 effect sizes (PSS-10 = 9 [38,43,45–49,52,58], PSS-14 = 4 [29,40,50,51], PSS-4 = 2 [37,55]), DASS 21 stress subscale in seven effect sizes [35,39,42,44,54,63,64], ICSRLE in two effect sizes [47,56], USQ in one effect size [62], and the stress component of the PHQD in one effect size [66].

Insomnia and stress main results

Fourteen effect sizes for insomnia and stress were reported across 12 studies (range 0.25-0.55) [29,41,47,50,53,54,57,59,60,65,67,69] (with Benham, 2019 [47] and Hellstrom et al, [29] including two effect sizes each). Insomnia was measured by the ISI in 11 effect sizes [29,41,47,50,53,54,57,59,60,69], with the remaining three effect sizes using the AIS [67], SCI [29], and MSQI [65]. Stress was measured by variants of the PSS in nine effect sizes (PSS-10 = 6 [47,53,57,59,65,67], PSS-14 = 3 [29,50]), variants of the DASS stress subscale in four effect sizes (DASS21 = 3 [41,54,69], DASS-42 = 1 [60]), and the ICSRLE in one effect size [47].

Outcomes of Comorbidities

Nineteen studies (n=19) included measures of anxiety and/or depression [35,39,41–44,50,52–54,56–60,63,64,66,69]. Of these, 10 studies used variants of the DASS to measure stress and thus, reporting the subscales of anxiety and depression [35,39,41,42,44,54,60,63,64,69] (See Table 1).

Associations of Comorbidities

A total of 41 combinations of associations (effect sizes) between the outcomes of interest such as: sleep quality, insomnia, sleepiness, depression and anxiety were reported from 19 studies (as above): 13 for sleep quality and depression [35,39,42–44,50,52,54,56,58,63,64,66], 11 for sleep quality and anxiety [35,39,42–44,50,54,58,63,64,66], eight (n=8) for insomnia and depression [40,49,52,53,56 58,59,68], seven (n=7) for insomnia and anxiety [41,50,54,57,59,60,69], one for sleepiness and depression [50], and one for sleepiness and anxiety [50]. Results of the meta-analysis of these comorbidities are presented in Table 2. Associations between stress and depression were reported by 22 effect sizes from 19 studies

(as above) and between stress and anxiety were reported by 15 studies [35,39,41–44,50,54,57–60,63,64,69].

Assessment of bias/ Study Quality

Quality scores ranged from 2 to 8 ($M=3.47$). Eight studies were rated as low quality [39,41,45,47,56,65,67,69], twenty-four were rated as moderate quality [29,35,36,38,42–44,46,48–55,57,58,60–62,64,66,76] and two were rated as high quality [37,59] indicating that most of the available evidence is of moderate quality. Most of the evidence ($n=32$) relies on cross-sectional research designs, which prevents the assessment of temporal precedence and limits any inferences regarding causality. Furthermore, most studies did not detail their hypotheses ($n=20$), nor did they provide a power calculation or indicate whether sufficient power was achieved ($n=27$).

Meta-analyses

Sleep quality and Stress

The weighted pooled effect size (25 studies, $n = 10,065$) for sleep quality and stress was $r = .39$ (95% CI: .35, .43, $p < 0.001$; $I^2 = 80.03\%$; $\tau^2 = 0.010$; $Q [24] = 133.7216$, $p < 0.001$). A forest plot of the pooled effect sizes is shown in Figure 1. Both regression and rank correlation tests for asymmetry were not statistically significant (Egger's $p = 0.650$, Kendall's $\tau = .02$, $p = 0.908$). Figure 2 shows the related funnel plot.

Insomnia and Stress

The weighted pooled effect size (12 studies, $n = 5,564.5$) for insomnia and stress was $r = .41$ (95% CI: .36, .46, $p < 0.001$; $I^2 = 80.96\%$; $\tau^2 = 0.009$; $Q [11] = 67.72$, $p < 0.001$). A forest plot of the pooled effect sizes is shown in Figure 3. Both regression and rank correlation tests for asymmetry were not statistically significant (Egger's $p = 0.179$, Kendall's $\tau = .33$, $p = 0.153$). Figure 4 shows the related funnel plot.

Co-morbidities

Results of the meta-analyses for combinations of the outcomes of interest and the reported comorbidities are presented in Table 2. The pooled effect sizes for stress and anxiety, as well as stress and depression, are also reported. The studies included in these meta-analyses are reported in the supplementary material.

[Insert Figures 2 – 5 Here]

[Insert Table 2 - Here]

Discussion

The aim of this review was to systematically identify studies that explore the associations of sleep quality, insomnia and stress in undergraduate students. This systematic review is the first to synthesise peer-reviewed scientific evidence from 34 studies across thirteen countries and empirically assess the pooled associations between sleep quality (25 studies) or insomnia (12 studies) and stress in a total of $n=14,704$ undergraduate university students. We also provide estimates of effect sizes using random effects model meta-analyses techniques. Included studies used various measures of sleep quality, insomnia and stress and in some studies, researchers used multiple measures of both sleep quality and insomnia [29,47,54]. The effect sizes for the associations between outcomes of interest were uniformly positive effect sizes reported in the included studies. The effect size ranged from small to moderate (.19 to .55) for sleep quality and stress with similar range for insomnia and stress (.25 to .53). The weighted pooled effect size between sleep quality and stress was .39 (25 studies, $n = 10,065$), whereas a slightly higher pooled association of .41 was found for insomnia and stress (12 studies, $n = 5,564.5$). These effect sizes should be considered with caution given the high heterogeneity identified (80.03% and 80.96% respectively) in the meta-analyses [32]. However, heterogeneity is fairly typical in epidemiological sleep meta-analyses [77]. Methodological limitations notwithstanding, the results of this review indicate a significant interplay of stress and sleep and/or insomnia in undergraduate students.

With the increase of mental health problems in student groups, there is evidence of a surge of studies published investigating sleep and stress in students. This is reflected in the included studies as the earliest studies in this review have been published in 2010 [37,46,52]. Most studies included in this review were comprised of rather small sample sizes ranging from 71 to 941 students and, despite some diversity in study location, sampling was disproportionately limited to North America ($n=15$) and Asia ($n=12$). Very few studies were conducted in Europe ($n=4$), Australia ($n=1$), or Africa ($n=1$). Most studies collected cross-sectional data ($n=32$) with only two employing a longitudinal approach [37,42]. Moreover, a disproportionate preponderance of female participants was observed, and several of the included studies [$n=12$] restricted their student population to include only those deemed as psychologically healthy [40,44,57]. A variation was observed in the quality ratings of the included studies, where eight were considered low quality, twenty-four as moderate quality, and only two of high quality.

Stress and Sleep interplay

Stress-sleep reactivity is the process by which a given cognitive, physiological, or environmental stressor results in a disruption of the sleep system [78]. Sleep reactivity itself is a predisposing factor for insomnia according to some researchers [78], with recent evidence demonstrating that stress-sleep reactivity was associated with poor psychological health, and this relationship was found to be moderated by perceived stress in normal sleepers

[79]. In a recent study, Stress-sleep reactivity was identified as a feature of acute insomnia but it was not implicated in the transition from acute to chronic insomnia [20]. Individual differences in the stress-induced sleep disturbances are considerable either in the severity or reporting, for review see [9]. However, the studies in the current review explored the associations of sleep quality and/or insomnia and stress using self-report measures of perceived stress.

The interaction between sleep and psychological stress is likely bidirectional in nature, where daytime stressors serve to impair the subsequent sleep process, and the experience of poor sleep impairs the adequacy of daytime functioning [80]. From the cognitive and neurocognitive perspectives, academic stress may contribute to the experience of insomnia due to increased worry and ruminative thinking when attempting to initiate sleep [17,81]. The initial temporal nature of this thinking may orient towards academic and psychosocial worry and rumination, consequently leading to delayed sleep-onset through a combination of negatively toned cognitive activity and physiological hyperarousal [82]. Over time, the subsequent daytime consequences of insomnia likely further impair the ability to cope with social, interpersonal, and academic stressors typically faced by students and thus contribute to stress. To compensate, individuals may employ behavioural strategies to compensate for the effects of their transient sleep loss (e.g., increased time in bed through napping or attempting sleep earlier than normal). Paradoxically, these strategies increase the likelihood that the initially acute experience of insomnia perpetuates into a chronic problem [18].

Sleep and Stress in Students

Sleep quality over the academic year is subject to the dynamic interplay of personal, academic, and environmental events. Indeed, negative family life events and academic stress both predict symptoms of insomnia, and poor sleep quality and stress before exams are associated with poorer academic performance [8]. For example, in a sample of college students, John-Henderson et al.,[55] determined the incidence of significant life stressors in the preceding year to be associated with an increased number of sleep disturbances, but not sleep efficiency or latency, hypnotic medication use, daytime dysfunction or global scores as determined by the PSQI. Moreover, students appear to exhibit worse sleep in the 5 weeks before their exams compared to the rest of the semester [83]. Future studies should also consider the influence of physical activity, caffeine intake or smoking which have been identified as potential confounds, mediators and/ moderators of the relationships between stress and sleep [84,85].

In an academic setting, longitudinal studies or studies that account for variation in stress across an academic year would enable disentanglement of the effects of various stressors as mediating factors of sleep disturbances in this population. Indeed, one of the included studies demonstrated the expected increase in stress and self-reported sleep disturbances as the students progressed from periods of low to higher stress [42]. The students that demonstrated increased sleep disturbances during more demanding periods were characterised by higher trait worry paired with greater high-frequency heart rate variability. This suggests a possible

profile of those more vulnerable to the effects of stress on sleep [42]. Studies exploring stress related to academic demands which exceed the capabilities of the students should differentiate amongst stressors and their subsequent effects on sleep. Similarly, these studies may benefit from using measures of academic stress that differentiate between specific academic experiences, such as test anxiety which may affect sleep in the short term [86].

Whilst many institutions provide student-focused mental health and wellbeing services, the prevalence of mental health difficulties is increasing in this population [3]. Furthermore, limited funding of services results in long waiting lists with students having to wait up to three months to receive support [3]. Systematic monitoring of student mental health would allow universities to appropriately allocate session availability and staffing, whilst determining the specific needs of students leading to a subsequent improvement in the efficacy of in-house treatment and assessment [87]. In the context of sleep, Holmen et al. recently examined the student perception of sleep-related uncertainties and the specific sleep-related interests of Norwegian students in the context of sleep-promotion. Here, screen-time, stress, shift-work, and sleep quality were identified as key areas of interest to students [88]. Sleep disturbance and insomnia are a less stigmatising mental health symptom even in the presence of comorbid mental health problems [89] and may, therefore, increase the likelihood of students requesting support. Currently a wealth of knowledge demonstrates the efficacy of Cognitive Behavioural Therapy for insomnia (CBTi) interventions to alleviate insomnia symptoms [90,91]. Furthermore, various methods of delivery and session structures have been shown to be efficacious, such as group interventions, online and a single shot [91]. Individuals in an acute phase of insomnia may be offered a single session CBTi and a self-help pamphlet which has been previously evidenced as effective in ameliorating acute insomnia [92].

Considering the above, it is therefore crucial for student wellbeing services to expand any programmes offered to reduce the negative consequences of disturbed sleep, drawing from the CBTi literature. Many sleep-based interventions have been demonstrated to improve subjective sleep amongst university students, using various methods involving sleep-education and monitoring, mindfulness and relaxation, and text message-based recommendations drawn from the National Sleep Foundation recommendations for good sleep practices [93,94]. Indeed, a recent review of psychological interventions targeting sleep in university students found: small to medium effect sizes in studies providing sleep hygiene; small to large effects for those employing relaxation techniques; and large effects in those providing CBT approaches [90]. While the experience of stress may be habitual of the university lifestyle, the interventional reduction of excessive stress appears another worthwhile target [95]. Indeed, several meta-analytic studies highlight the therapeutic role of cognitive behavioural and mindfulness relaxation techniques in reducing stress amongst university samples [95].

Limitations of current review

One limitation of this systematic review and meta-analysis should be the high heterogeneity of the pooled effect sizes of the associations of sleep and stress. Following subgroup analysis, the instances of heterogeneity remained high. Thus, the current findings should be considered with caution. Furthermore, it should be noted that most studies were cross-sectional which limits conclusions regarding temporal ordering in the context of theories as to insomnia development and maintenance.

Transition to university is a period of upset for some young students [24] that is associated with new onset or exacerbation of mental health difficulties [3]. Future studies should consider reporting these variables to enable characterization of those most vulnerable to sleep disturbances. The present review included a convenience exploratory meta-analysis of comorbidities as most studies included outcomes of comorbidities that relate to sleep and insomnia outcomes. These pooled associations were calculated using the effect sizes reported in the included studies and are not the outcome of a systematic exploration of the literature. Future systematic reviews and meta-analyses should systematically explore the associations of comorbid conditions in the student population.

Seventy-five studies were excluded from the final analysis due to the use of non-validated measures. The ongoing and problematic use of single item or bespoke in-house scales to measure sleep and stress fails to adequately capture the true extent of symptom experience in the student population, often leading to altered prevalence statistics and misrepresentation of the captured problem. Future work should aim to consistently use validated measures of stress and sleep disturbances.

A number of studies were excluded as papers were not located despite the efforts to contact the corresponding authors or other members of the research team. As such, although a comprehensive search was undertaken the results may not be fully representative of the actual relationship due to missing manuscripts. Furthermore, the review included only studies published in English language, and thus studies in other languages may provide different results to the ones reported here.

Conclusion

Sleep quality, insomnia and stress are interlinked phenomena which affect university students and have negative consequences for their academic performance and mental health. The pooled associations in this review show moderate and comparable effect sizes for both sleep quality and stress as well as insomnia and stress in undergraduate university students. However, due to the high heterogeneity among studies and a preponderance of cross-sectional studies, the findings from the meta-analysis should be interpreted with care. Our findings also highlight methodological challenges including the high variability between the studies and the lack of longitudinal approaches to capture the interplay between sleep disturbances and the variation in stress across the academic year. Such studies would permit the role of stress in the development and maintenance of insomnia to be more fully elucidated, as well as facilitating the identification of personality traits and risk factors that characterise vulnerable individuals. Given the importance of sleep to wellbeing, it is important for university policy-makers to promote good sleep health amongst students.

Practice Points

1. Both poor sleep quality and insomnia symptoms are moderately associated with stress.
2. The presence of sleep disturbance and insomnia symptoms should be assessed routinely by College and University counselling and mental health services, and may present a risk factor for ongoing and subsequent difficulties.
3. In a preventative effort, students may benefit from sleep psychoeducation, especially during transition phases.
4. Treating sleep offers potential to improve student health and wellbeing, and potentially benefit assessment performance and experiences.

Research Agenda

1. More studies should provide a prospective and/or longitudinal design approach to understand symptom progression and the possible exaggeration of these at various points of the academic curriculum such as exams, including via ESM.
2. How, and to what extent, stress contributes to the development and maintenance of insomnia, and other mental health conditions, should be considered longitudinally in this population.
3. Future studies should measure and report pertinent characteristics such as field of studies and ethnic background, in addition to known risk factors, to aid the understanding of who may benefit from psychoeducation on sleep.
4. Single-item and bespoke measures which are not reported to be validated should be avoided.

References

- *[1] Akram U, Ypsilanti A, Gardani M, Irvine K, Allen S, Akram A, et al. Prevalence and psychiatric correlates of suicidal ideation in UK university students. *Journal of Affective Disorders* 2020;272:191–7. <https://doi.org/10.1016/j.jad.2020.03.185>.
- [2] Ribeiro S, Stickgold R. Sleep and school education. *Trends in Neuroscience and Education* 2014;3:18–23. <https://doi.org/10.1016/j.tine.2014.02.004>.
- [3] Thorley C. IMPROVING STUDENT MENTAL HEALTH IN THE UK'S UNIVERSITIES n.d.:2.
- [4] Becker SP, Jarrett MA, Luebbe AM, Garner AA, Burns GL, Kofler MJ. Sleep in a large, multi-university sample of college students: sleep problem prevalence, sex differences, and mental health correlates. *Sleep Health* 2018;4:174–81. <https://doi.org/10.1016/j.sleh.2018.01.001>.
- *[5] Sivertsen B, Vedaa Ø, Harvey AG, Glozier N, Pallesen S, Aarø LE, et al. Sleep patterns and insomnia in young adults: A national survey of Norwegian university students. *J Sleep Res* 2019;28:e12790. <https://doi.org/10.1111/jsr.12790>.
- [6] Walker MP, Stickgold R. Sleep, Memory, and Plasticity. *Annual Review of Psychology* 2006;57:139–66. <https://doi.org/10.1146/annurev.psych.56.091103.070307>.
- [7] Taylor DJ, Vatthauer KE, Bramoweth AD, Ruggero C, Roane B. The Role of Sleep in Predicting College Academic Performance: Is it a Unique Predictor? *Behavioral Sleep Medicine* 2013;11:159–72. <https://doi.org/10.1080/15402002.2011.602776>.
- [8] Okano K, Kaczmarzyk JR, Dave N, Gabrieli JDE, Grossman JC. Sleep quality, duration, and consistency are associated with better academic performance in college students. *Npj Sci Learn* 2019;4:1–5. <https://doi.org/10.1038/s41539-019-0055-z>.
- [9] Kalmbach DA, Anderson JR, Drake CL. The impact of stress on sleep: Pathogenic sleep reactivity as a vulnerability to insomnia and circadian disorders. *Journal of Sleep Research* 2018;27:e12710. <https://doi.org/10.1111/jsr.12710>.
- [10] Ulrich-Lai YM, Herman JP. Neural regulation of endocrine and autonomic stress responses. *Nat Rev Neurosci* 2009;10:397–409. <https://doi.org/10.1038/nrn2647>.
- [11] Balbo M, Leproult R, Van Cauter E. Impact of Sleep and Its Disturbances on Hypothalamo-Pituitary-Adrenal Axis Activity. *International Journal of Endocrinology* 2010;2010:e759234. <https://doi.org/10.1155/2010/759234>.
- [12] Saper CB, Fuller PM, Pedersen NP, Lu J, Scammell TE. Sleep State Switching. *Neuron* 2010;68:1023–42. <https://doi.org/10.1016/j.neuron.2010.11.032>.
- [13] Riemann D, Krone LB, Wulff K, Nissen C. Sleep, insomnia, and depression. *Neuropsychopharmacology* 2020;45:74–89. <https://doi.org/10.1038/s41386-019-0411-y>.
- [14] Lazarus R, Folkman S. *Stress, appraisal, and coping*, 1974. <https://doi.org/10.4135/9781412952576.n198>.
- [15] Spielman AJ, Caruso LS, Glovinsky PB. A behavioral perspective on insomnia treatment. *Psychiatr Clin North Am* 1987;10:541–53.
- [16] Germain A, Buysse DJ, Ombao H, Kupfer DJ, Hall M. Psychophysiological reactivity and coping styles influence the effects of acute stress exposure on rapid eye movement sleep. *Psychosom Med* 2003;65:857–64. <https://doi.org/10.1097/01.psy.0000079376.87711.b0>.
- [17] Perlis ML, Giles DE, Mendelson WB, Bootzin RR, Wyatt JK. Psychophysiological insomnia: the behavioural model and a neurocognitive perspective. *J Sleep Res* 1997;6:179–88. <https://doi.org/10.1046/j.1365-2869.1997.00045.x>.
- [18] Espie CA, Broomfield NM, MacMahon KMA, Macphee LM, Taylor LM. The attention-intention-effort pathway in the development of psychophysiological insomnia: a theoretical review. *Sleep Med Rev* 2006;10:215–45. <https://doi.org/10.1016/j.smr.2006.03.002>.

- [19] Ellis JG, Gehrman P, Espie CA, Riemann D, Perlis ML. Acute insomnia: current conceptualizations and future directions. *Sleep Med Rev* 2012;16:5–14. <https://doi.org/10.1016/j.smr.2011.02.002>.
- *[20] Ellis JG, Perlis ML, Espie CA, Grandner MA, Bastien CH, Barclay NL, et al. The natural history of insomnia: predisposing, precipitating, coping, and perpetuating factors over the early developmental course of insomnia. *Sleep* n.d. <https://doi.org/10.1093/sleep/zsab095>.
- *[21] Bonnet MH, Arand DL. Hyperarousal and insomnia: state of the science. *Sleep Med Rev* 2010;14:9–15. <https://doi.org/10.1016/j.smr.2009.05.002>.
- [22] Chen IY, Jarrin DC, Ivers H, Morin CM. Investigating psychological and physiological responses to the Trier Social Stress Test in young adults with insomnia. *Sleep Med* 2017;40:11–22. <https://doi.org/10.1016/j.sleep.2017.09.011>.
- [23] O’Neill S, McLafferty M, Ennis E, Lapsley C, Bjourson T, Armour C, et al. Socio-demographic, mental health and childhood adversity risk factors for self-harm and suicidal behaviour in College students in Northern Ireland. *Journal of Affective Disorders* 2018;239:58–65. <https://doi.org/10.1016/j.jad.2018.06.006>.
- [24] Cleary M, Walter G, Jackson D. “Not always smooth sailing”: mental health issues associated with the transition from high school to college. *Issues Ment Health Nurs* 2011;32:250–4. <https://doi.org/10.3109/01612840.2010.548906>.
- [25] Navarro-Martínez R, Chover-Sierra E, Colomer-Pérez N, Vlachou E, Andriuseviciene V, Cauli O. Sleep quality and its association with substance abuse among university students. *Clinical Neurology and Neurosurgery* 2020;188:105591. <https://doi.org/10.1016/j.clineuro.2019.105591>.
- [26] Moher D, Liberati A, Tetzlaff J, Altman DG. Preferred reporting items for systematic reviews and meta-analyses: the PRISMA statement. *BMJ* 2009;339:b2535. <https://doi.org/10.1136/bmj.b2535>.
- [27] Peterson RA, Brown SP. On the Use of Beta Coefficients in Meta-Analysis. *Journal of Applied Psychology* 2005;90:175–81. <https://doi.org/10.1037/0021-9010.90.1.175>.
- *[28] Russell K, Allan S, Beattie L, Bohan J, MacMahon K, Rasmussen S. Sleep problem, suicide and self-harm in university students: A systematic review. *Sleep Med Rev* 2019;44:58–69. <https://doi.org/10.1016/j.smr.2018.12.008>.
- [29] Hellström A, Hagell P, Broström A, Ulander M, Luik AI, Espie CA, et al. A classical test theory evaluation of the Sleep Condition Indicator accounting for the ordinal nature of item response data. *PLoS ONE* 2019;14:e0213533. <https://doi.org/10.1371/journal.pone.0213533>.
- [30] R: The R Project for Statistical Computing n.d. <https://www.r-project.org/> (accessed April 13, 2021).
- [31] Viechtbauer W. Conducting Meta-Analyses in R with the metafor Package. *Journal of Statistical Software* 2010;36:1–48. <https://doi.org/10.18637/jss.v036.i03>.
- [32] Higgins JPT, Thompson SG, Deeks JJ, Altman DG. Measuring inconsistency in meta-analyses. *BMJ* 2003;327:557–60. <https://doi.org/10.1136/bmj.327.7414.557>.
- [33] Ouzzani M, Hammady H, Fedorowicz Z, Elmagarmid A. Rayyan—a web and mobile app for systematic reviews. *Syst Rev* 2016;5. <https://doi.org/10.1186/s13643-016-0384-4>.
- [34] Cohen J. A Coefficient of Agreement for Nominal Scales. *Educational and Psychological Measurement* 1960;20:37–46. <https://doi.org/10.1177/001316446002000104>.
- [35] Al-Khani AM, Sarhandi MI, Zaghloul MS, Ewid M, Saquib N. A cross-sectional survey on sleep quality, mental health, and academic performance among medical students in Saudi Arabia. *BMC Res Notes* 2019;12:665. <https://doi.org/10.1186/s13104-019-4713-2>.
- [36] Alsaggaf MA, Wali SO, Merdad RA, Merdad LA. Sleep quantity, quality, and insomnia symptoms of medical students during clinical years. *Saudi Med J* 2016;37:173–82. <https://doi.org/10.15537/smj.2016.2.14288>.
- [37] Caldwell K, Harrison M, Adams M, Quin RH, Greeson J. Developing Mindfulness in College Students Through Movement-Based Courses: Effects on Self-Regulatory Self-Efficacy, Mood,

- Stress, and Sleep Quality. *Journal of American College Health* 2010;58:433–42.
<https://doi.org/10.1080/07448480903540481>.
- [38] Haidar SA, Karavetian M, Radwan H, de Vries NK. University Lebanese students are not immune to the metabolic syndrome. *MNM* 2019;12:23–32. <https://doi.org/10.3233/MNM-180237>.
- [39] Najafi Kalyani M, Jamshidi N, Salami J, Pourjam E. Investigation of the Relationship between Psychological Variables and Sleep Quality in Students of Medical Sciences. *Depression Research and Treatment* 2017;2017:1–6. <https://doi.org/10.1155/2017/7143547>.
- [40] Rebello C, Kallingappa P, Hegde P. Assessment of perceived stress and association with sleep quality and attributed stressors among 1st-year medical students: A cross-sectional study from Karwar, Karnataka, India. *Tzu Chi Med J* 2018;30:221.
https://doi.org/10.4103/tcmj.tcmj_85_17.
- [41] Doos Ali Vand H, Gharraee B, Farid A-AA, Bandi MG. Prediction of insomnia severity based on cognitive, metacognitive, and emotional variables in college students. *Explore (NY)* 2014;10:233–40. <https://doi.org/10.1016/j.explore.2014.04.005>.
- [42] MacNeil S, Deschênes SS, Caldwell W, Brouillard M, Dang-Vu T-T, Gouin J-P. High-Frequency Heart Rate Variability Reactivity and Trait Worry Interact to Predict the Development of Sleep Disturbances in Response to a Naturalistic Stressor. *Ann Behav Med* 2017;51:912–24.
<https://doi.org/10.1007/s12160-017-9915-z>.
- [43] Liffman S, Thorsteinsson EB, Brown RF, Hine DW. Mediators and moderators of stress—Fatigue and psychological distress—Fatigue relationships in a non-clinical sample. *Psychology and Education: An Interdisciplinary Journal* 2012;49:29–45.
- [44] Markarian SA, Pickett SM, Deveson DF, Kanona BB. A model of BIS/BAS sensitivity, emotion regulation difficulties, and depression, anxiety, and stress symptoms in relation to sleep quality. *Psychiatry Research* 2013;210:281–6. <https://doi.org/10.1016/j.psychres.2013.06.004>.
- [45] Najem J, Saber M, Aoun C, El Osta N, Papazian T, Rabbaa Khabbaz L. Prevalence of food addiction and association with stress, sleep quality and chronotype: A cross-sectional survey among university students. *Clinical Nutrition* 2020;39:533–9.
<https://doi.org/10.1016/j.clnu.2019.02.038>.
- [46] Benham G. Sleep: an important factor in stress-health models. *Stress and Health* 2010;26:204–14. <https://doi.org/10.1002/smi.1304>.
- [47] Benham G. The Sleep Health Index: Correlations with standardized stress and sleep measures in a predominantly Hispanic college student population. *Sleep Health* 2019;5:587–91.
<https://doi.org/10.1016/j.sleh.2019.07.007>.
- [48] Benham G, Charak R. Stress and sleep remain significant predictors of health after controlling for negative affect. *Stress Health* 2019;35:59–68. <https://doi.org/10.1002/smi.2840>.
- [49] Briones EM, Benham G. An examination of the equivalency of self-report measures obtained from crowdsourced versus undergraduate student samples. *Behav Res* 2017;49:320–34.
<https://doi.org/10.3758/s13428-016-0710-8>.
- [50] Dietch JR, Taylor DJ, Sethi K, Kelly K, Bramoweth AD, Roane BM. Psychometric Evaluation of the PSQI in U.S. College Students. *Journal of Clinical Sleep Medicine* 2016;12:1121–9.
<https://doi.org/10.5664/jcsm.6050>.
- [51] Furman M, Joseph N, Miller-Perrin C. Associations Between Coping Strategies, Perceived Stress, and Health Indicators. *PsiChiJournal* 2018;23:61–72. <https://doi.org/10.24839/2325-7342.JN23.1.61>.
- [52] Graham JE, Streitel KL. Sleep quality and acute pain severity among young adults with and without chronic pain: the role of biobehavioral factors. *J Behav Med* 2010;33:335–45.
<https://doi.org/10.1007/s10865-010-9263-y>.
- [53] Gress-Smith JL, Roubinov DS, Andreotti C, Compas BE, Luecken LJ. Prevalence, Severity and Risk Factors for Depressive Symptoms and Insomnia in College Undergraduates: Depressive

- Symptoms and Insomnia in College. *Stress Health* 2015;31:63–70.
<https://doi.org/10.1002/smi.2509>.
- [54] Hellberg SN, Buchholz JL, Abramowitz JS. Insomnia and obsessive-compulsive symptom dimensions: The mediating role of anxiety and depression. *Journal of Obsessive-Compulsive and Related Disorders* 2019;23:100482. <https://doi.org/10.1016/j.jocrd.2019.100482>.
- [55] John-Henderson NA, Palmer CA, Thomas A. Life stress, sense of belonging and sleep in American Indian college students. *Sleep Health* 2019;5:352–8.
<https://doi.org/10.1016/j.sleh.2019.04.001>.
- [56] Vargas PA, Robles E. Asthma and allergy as risk factors for suicidal behavior among young adults. *Journal of American College Health* 2019;67:97–112.
<https://doi.org/10.1080/07448481.2018.1462822>.
- [57] Wilkerson A, Boals A, Taylor DJ. Sharpening our Understanding of the Consequences of Insomnia: The Relationship Between Insomnia and Everyday Cognitive Failures. *Cogn Ther Res* 2012;36:134–9. <https://doi.org/10.1007/s10608-011-9418-3>.
- [58] Zhang Y, Peters A, Chen G. Perceived Stress Mediates the Associations between Sleep Quality and Symptoms of Anxiety and Depression among College Nursing Students. *International Journal of Nursing Education Scholarship* 2018;15. <https://doi.org/10.1515/ijnes-2017-0020>.
- [59] Haghighi M, Gerber M. Does mental toughness buffer the relationship between perceived stress, depression, burnout, anxiety, and sleep? *International Journal of Stress Management* 2019;26:297–305. <https://doi.org/10.1037/str0000106>.
- [60] Gupta S, Epari V, Pradhan S. Association of Internet Addiction with Insomnia, Depression, Anxiety and Stress among University Students - A Cross-Sectional Study. 2018;30:6.
- [61] Rebello CR, Kallingappa PB, Hegde PG. Assessment of perceived stress and association with sleep quality and attributed stressors among 1st-year medical students: A cross-sectional study from Karwar, Karnataka, India. *Tzu Chi Med J* 2018;30:221–6.
https://doi.org/10.4103/tcmj.tcmj_85_17.
- [62] Barnes J, Koch L, Wilford C, Boubert L. An Investigation into Personality, Stress and Sleep with Reports of Hallucinations in a Normal Population—Hallucinations in Normal Population. *PSYCH* 2011;02:371–5. <https://doi.org/10.4236/psych.2011.24058>.
- [63] Chen H. Roles of Mindfulness and Perceived Social Support in Mediating the Effect of Psychological Distress on Sleep Quality of College Students 2018.
<https://doi.org/10.14704/NQ.2018.16.4.1213>.
- [64] Fawzy M, Hamed SA. Prevalence of psychological stress, depression and anxiety among medical students in Egypt. *Psychiatry Research* 2017;255:186–94.
<https://doi.org/10.1016/j.psychres.2017.05.027>.
- [65] Kim H-J. Validation of the Korean Version of the Mini-Sleep Questionnaire-Insomnia in Korean College Students. *Asian Nurs Res (Korean Soc Nurs Sci)* 2017;11:1–5.
<https://doi.org/10.1016/j.anr.2017.01.001>.
- [66] Schlarb AA, Claßen M, Hellmann SM, Vögele C, Gulewitsch MD. Sleep and somatic complaints in university students. *J Pain Res* 2017;10:1189–99. <https://doi.org/10.2147/JPR.S125421>.
- [67] Średniawa A, Drwiła D, Krotos A, Wojtaś D, Kostecka N, Tomasik T. Insomnia and the level of stress among students in Krakow, Poland. *Trends Psychiatry Psychother* 2019;41:60–8.
<https://doi.org/10.1590/2237-6089-2017-0154>.
- [68] Buysse DJ, Reynolds CF, Monk TH, Berman SR, Kupfer DJ. The Pittsburgh Sleep Quality Index: a new instrument for psychiatric practice and research. *Psychiatry Res* 1989;28:193–213.
[https://doi.org/10.1016/0165-1781\(89\)90047-4](https://doi.org/10.1016/0165-1781(89)90047-4).
- [69] Younes F, Halawi G, Jabbour H, El Osta N, Karam L, Hajj A, et al. Internet Addiction and Relationships with Insomnia, Anxiety, Depression, Stress and Self-Esteem in University Students: A Cross-Sectional Designed Study. *PLoS One* 2016;11:e0161126.
<https://doi.org/10.1371/journal.pone.0161126>.

- [70] Bastien C. Validation of the Insomnia Severity Index as an outcome measure for insomnia research. *Sleep Medicine* 2001;2:297–307. [https://doi.org/10.1016/S1389-9457\(00\)00065-4](https://doi.org/10.1016/S1389-9457(00)00065-4).
- [71] Soldatos CR, Dikeos DG, Paparrigopoulos TJ. The diagnostic validity of the Athens Insomnia Scale. *Journal of Psychosomatic Research* 2003;55:263–7. [https://doi.org/10.1016/S0022-3999\(02\)00604-9](https://doi.org/10.1016/S0022-3999(02)00604-9).
- [72] Natale V, Fabbri M, Tonetti L, Martoni M. Psychometric goodness of the Mini Sleep Questionnaire. *Psychiatry and Clinical Neurosciences* 2014;68:568–73. <https://doi.org/10.1111/pcn.12161>.
- [73] Espie CA, Kyle SD, Hames P, Gardani M, Fleming L, Cape J. The Sleep Condition Indicator: a clinical screening tool to evaluate insomnia disorder. *BMJ Open* 2014;4:e004183. <https://doi.org/10.1136/bmjopen-2013-004183>.
- [74] Cohen S, Kamarck T, Mermelstein R. A Global Measure of Perceived Stress. *Journal of Health and Social Behavior* 1983;24:385–96. <https://doi.org/10.2307/2136404>.
- [75] Lovibond PF, Lovibond SH. The structure of negative emotional states: Comparison of the Depression Anxiety Stress Scales (DASS) with the Beck Depression and Anxiety Inventories. *Behaviour Research and Therapy* 1995;33:335–43. [https://doi.org/10.1016/0005-7967\(94\)00075-U](https://doi.org/10.1016/0005-7967(94)00075-U).
- [76] Chen H. Roles of Mindfulness and Perceived Social Support in Mediating the Effect of Psychological Distress on Sleep Quality of College Students. *Neuroquantology* 2018;16. <https://doi.org/10.14704/nq.2018.16.4.1213>.
- [77] Li L, Wang Y-Y, Wang S-B, Zhang L, Li L, Xu D-D, et al. Prevalence of sleep disturbances in Chinese university students: a comprehensive meta-analysis. *J Sleep Res* 2018;27:e12648. <https://doi.org/10.1111/jsr.12648>.
- *[78] Drake CL, Pillai V, Roth T. Stress and Sleep Reactivity: A Prospective Investigation of the Stress-Diathesis Model of Insomnia. *Sleep* 2014;37:1295–304. <https://doi.org/10.5665/sleep.3916>.
- [79] Ellis JG, Allen S, Perlis M, Grandner M, Gardani M, Espie C. Sleep Reactivity and Psychological Health in Normal Sleepers: the moderating role of stress 2018. <https://doi.org/10.31234/osf.io/nxz42>.
- [80] Prather AA. Chapter 24 - Sleep, stress, and immunity. In: Grandner MA, editor. *Sleep and Health*, Academic Press; 2019, p. 319–30. <https://doi.org/10.1016/B978-0-12-815373-4.00024-1>.
- [81] Harvey AG. A cognitive model of insomnia. *Behav Res Ther* 2002;40:869–93. [https://doi.org/10.1016/S0005-7967\(01\)00061-4](https://doi.org/10.1016/S0005-7967(01)00061-4).
- [82] Drake C, Richardson G, Roehrs T, Scofield H, Roth T. Vulnerability to Stress-related Sleep Disturbance and Hyperarousal. *Sleep* 2004;27:285–91. <https://doi.org/10.1093/sleep/27.2.285>.
- [83] Ahrberg K, Dresler M, Niedermaier S, Steiger A, Genzel L. The interaction between sleep quality and academic performance. *Journal of Psychiatric Research* 2012;46:1618–22. <https://doi.org/10.1016/j.jpsychires.2012.09.008>.
- [84] Jahrami Haitham, BaHammam Ahmed S., Bragazzi Nicola Luigi, Saif Zahra, Faris MoezAllIslam, Vitiello Michael V. Sleep problems during the COVID-19 pandemic by population: a systematic review and meta-analysis. *Journal of Clinical Sleep Medicine* n.d.;17:299–313. <https://doi.org/10.5664/jcsm.8930>.
- [85] Atoui S, Chevance G, Romain A-J, Kingsbury C, Lachance J-P, Bernard P. Daily associations between sleep and physical activity: A systematic review and meta-analysis. *Sleep Med Rev* 2021;57:101426. <https://doi.org/10.1016/j.smrv.2021.101426>.
- [86] Hamilton N, Freche R, Zhang Y, Zeller G, Carroll I. Test Anxiety and Poor Sleep: A Vicious Cycle. *IntJ Behav Med* 2021;28:250–8. <https://doi.org/10.1007/s12529-021-09973-1>.
- [87] Beiter R, Nash R, McCrady M, Rhoades D, Linscomb M, Clarahan M, et al. The prevalence and correlates of depression, anxiety, and stress in a sample of college students. *J Affect Disord* 2015;173:90–6. <https://doi.org/10.1016/j.jad.2014.10.054>.

- *[88] Holmen H, Riiser K, Løyland B, Sandbekken IH, Almendingen K, Andenæs R, et al. Students' top 10 priorities of research uncertainties on students' sleep: a pragmatic James Lind Alliance approach. *BMJ Open* 2021;11:e043697. <https://doi.org/10.1136/bmjopen-2020-043697>.
- [89] Bradley J, Freeman D, Chadwick E, Harvey AG, Mullins B, Johns L, et al. Treating Sleep Problems in Young People at Ultra-High Risk of Psychosis: A Feasibility Case Series. *Behav Cogn Psychother* 2018;46:276–91. <https://doi.org/10.1017/S1352465817000601>.
- *[90] Friedrich A, Schlarb AA. Let's talk about sleep: a systematic review of psychological interventions to improve sleep in college students. *J Sleep Res* 2018;27:4–22. <https://doi.org/10.1111/jsr.12568>.
- [91] Baglioni C, Altena E, Bjorvatn B, Blom K, Bothelius K, Devoto A, et al. The European Academy for Cognitive Behavioural Therapy for Insomnia: An initiative of the European Insomnia Network to promote implementation and dissemination of treatment. *Journal of Sleep Research* 2020;29:e12967. <https://doi.org/10.1111/jsr.12967>.
- *[92] Ellis JG, Cushing T, Germain A. Treating Acute Insomnia: A Randomized Controlled Trial of a "Single-Shot" of Cognitive Behavioral Therapy for Insomnia. *Sleep* 2015;38:971–8. <https://doi.org/10.5665/sleep.4752>.
- [93] Gipson CS, Chilton JM, Dickerson SS, Alfred D, Haas BK. Effects of a sleep hygiene text message intervention on sleep in college students. *J Am Coll Health* 2019;67:32–41. <https://doi.org/10.1080/07448481.2018.1462816>.
- [94] Schlarb AA, Friedrich A, Claßen M. Sleep problems in university students – an intervention. *Neuropsychiatr Dis Treat* 2017;13:1989–2001. <https://doi.org/10.2147/NDT.S142067>.
- [95] Yusuf M, Nicoloso-SantaBarbara J, Grey N, Moyer A, Lobel M. Meta-Analytic Evaluation of Stress Reduction Interventions for Undergraduate and Graduate Students. *International Journal of Stress Management* 2019;26:132–45. <https://doi.org/10.1037/str0000099>.

Figure 1. PRISMA flow chart

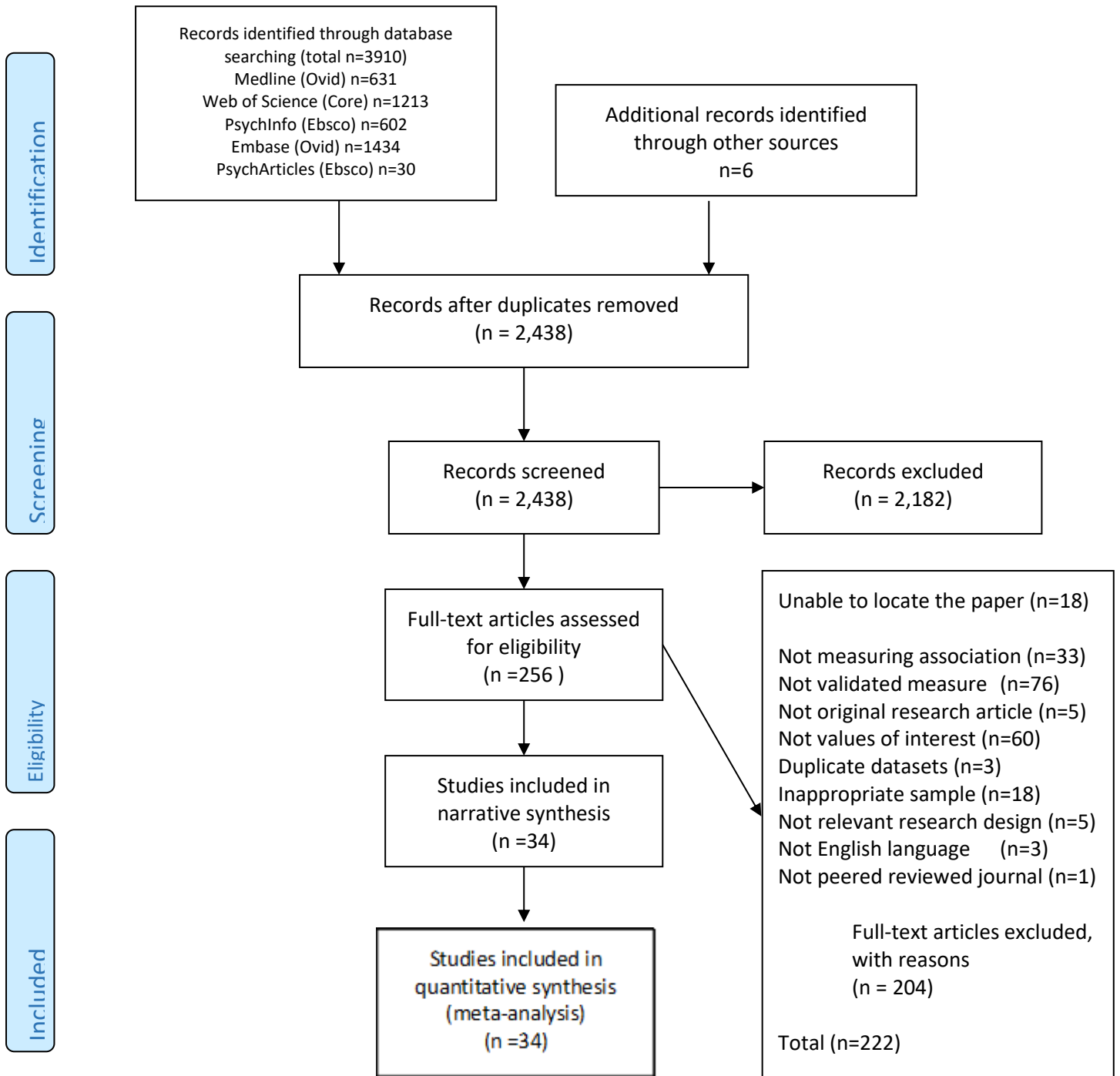


Figure 2.

Figure 2: Forest plot of effect sizes for sleep quality and stress. Size of filled squares indicates weight, whiskers show 95% CI, dashed line and filled diamond centred on pooled effect size and width of the diamond reflects 95% CI for pooled effect size.

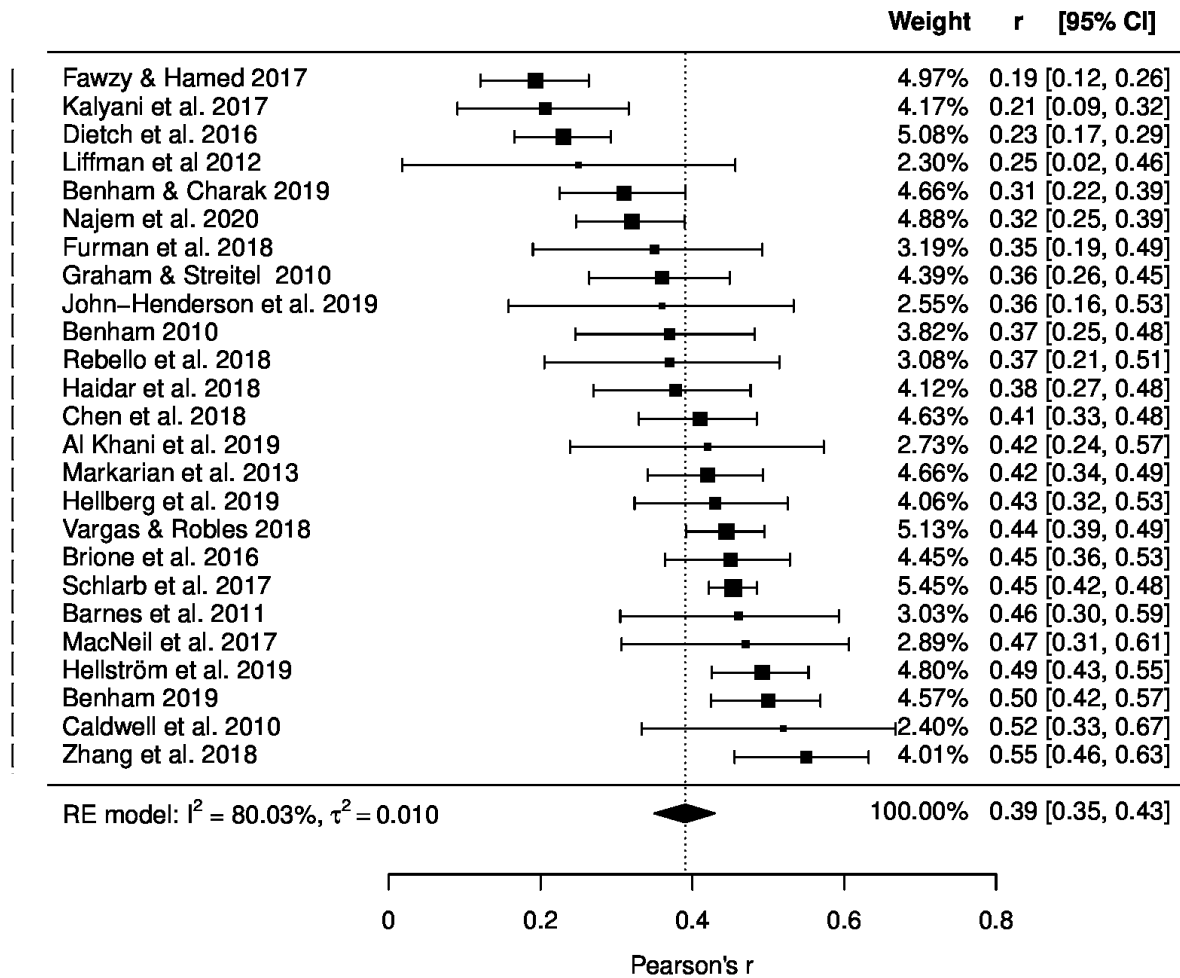


Figure 3.

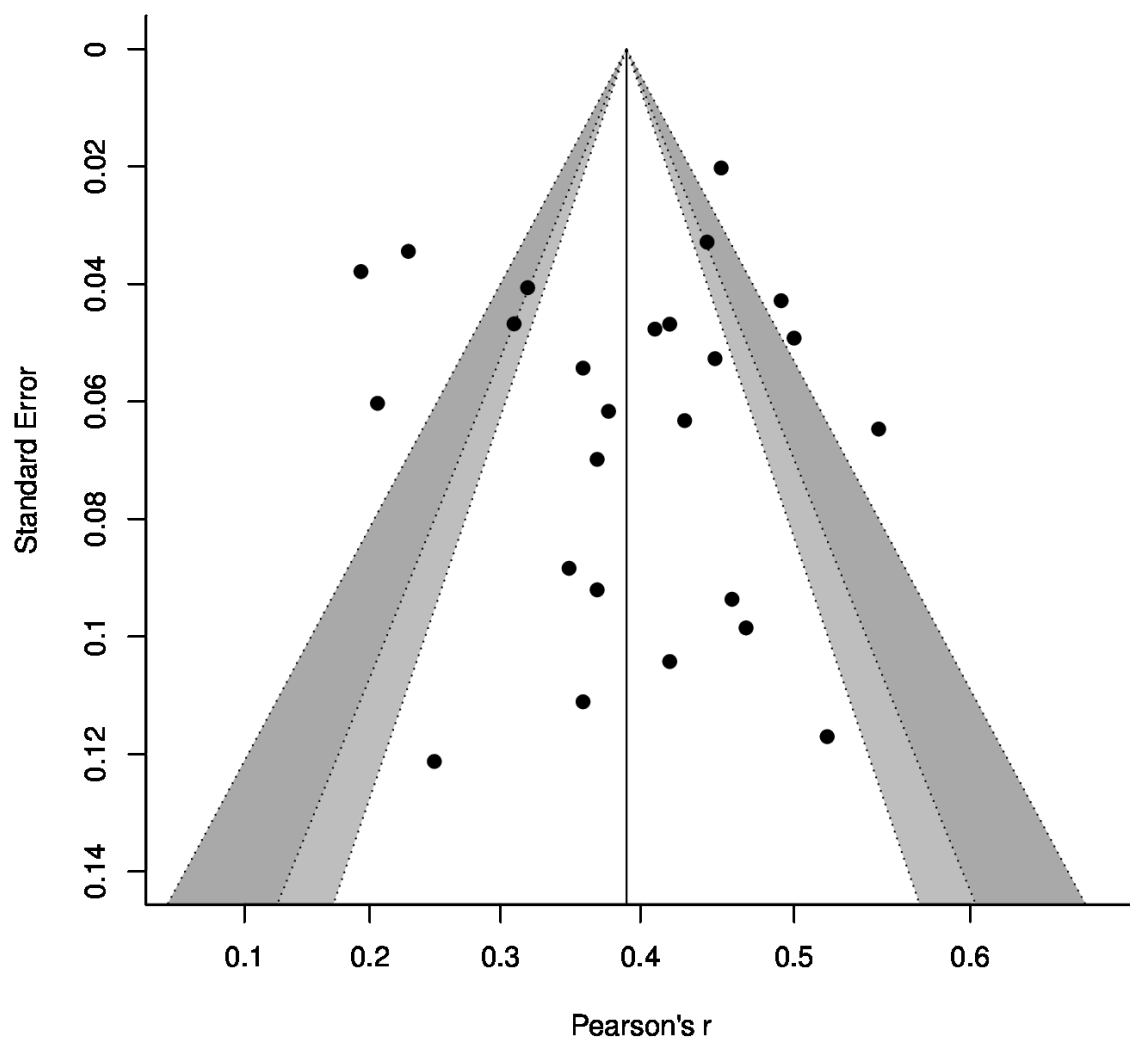


Figure 3: Funnel plot of effect sizes for sleep quality and stress. Vertical line centred on pooled effect size ($r = .39$), light grey = 90-95 confidence region, dark grey = 95-99% confidence region.

Figure 4.

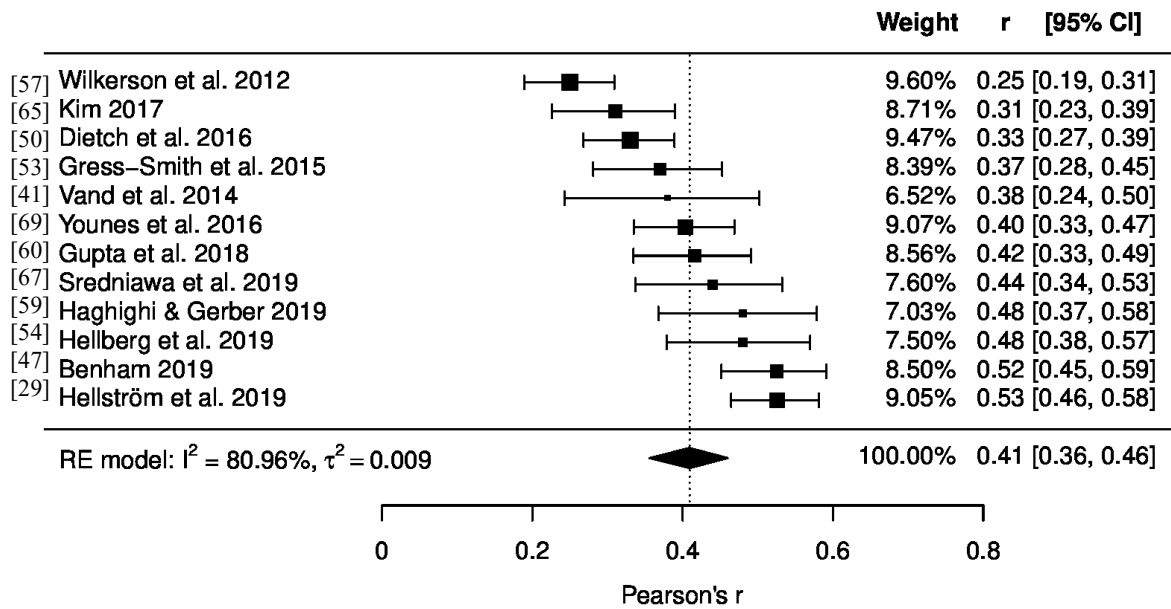


Figure 4: Forest plot of effect sizes for insomnia and stress. Size of filled squares indicates weight, whiskers show 95% CI, dashed line and filled diamond centred on pooled effect size and width of diamond reflects 95% CI for pooled effect size.

Figure 5.

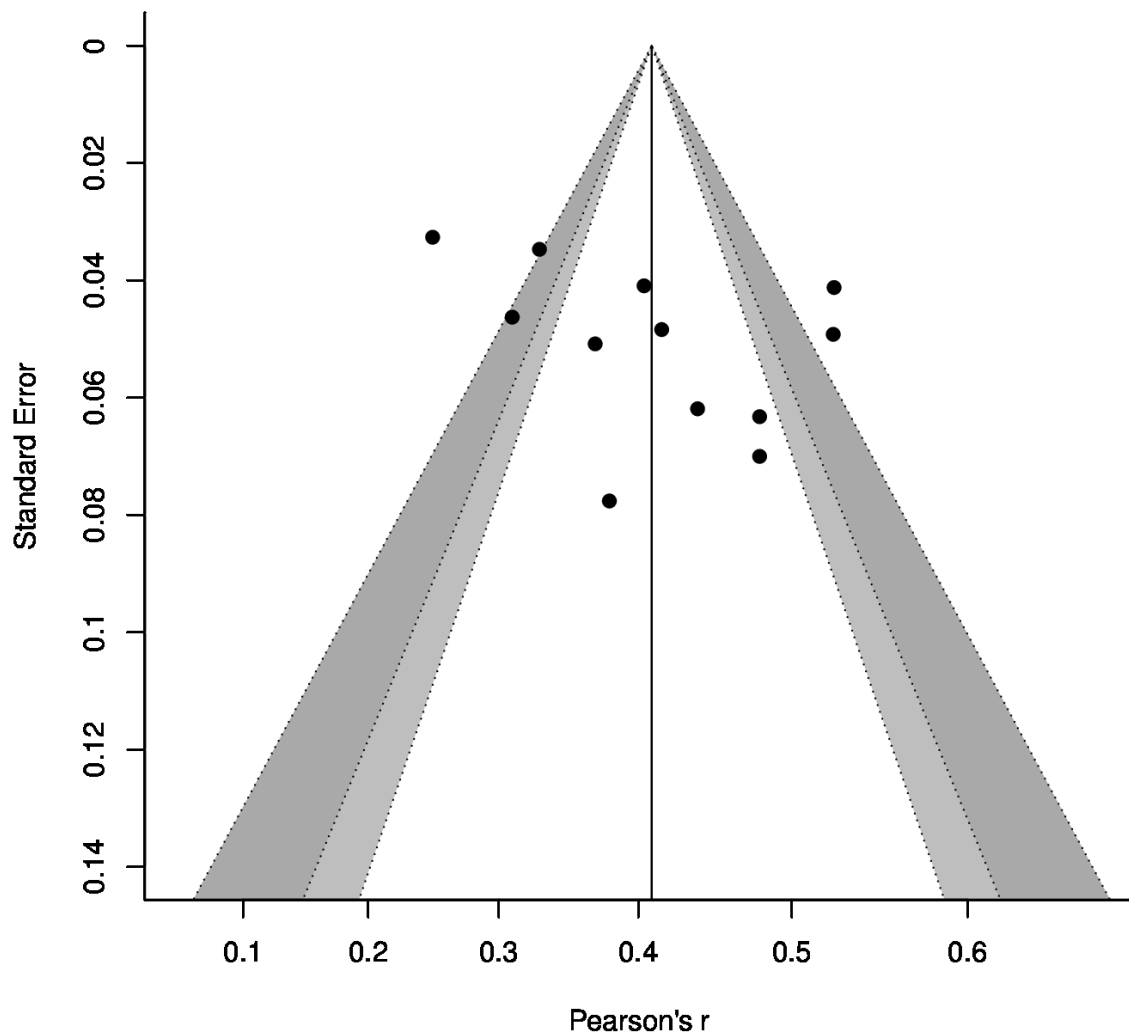


Figure 5: Funnel plot of effect sizes for insomnia and stress. Vertical line centred on pooled effect size ($r = .41$), light grey region = 90-95% confidence, dark grey region = 95-99% confidence region.

Figure 6.

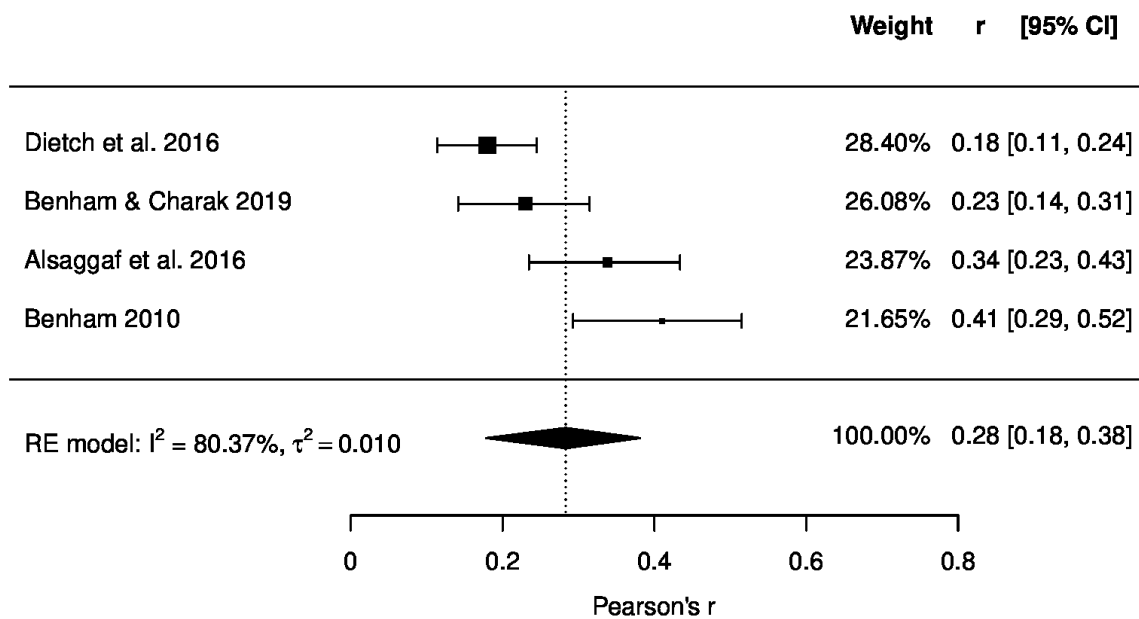


Figure 6: Forest plot of effect sizes for sleepiness and stress. Size of filled squares indicates weight, whiskers show 95% CI, filled diamond centred on pooled effect size and width reflects 95% CI for pooled effect size. [XX]

Figure 7

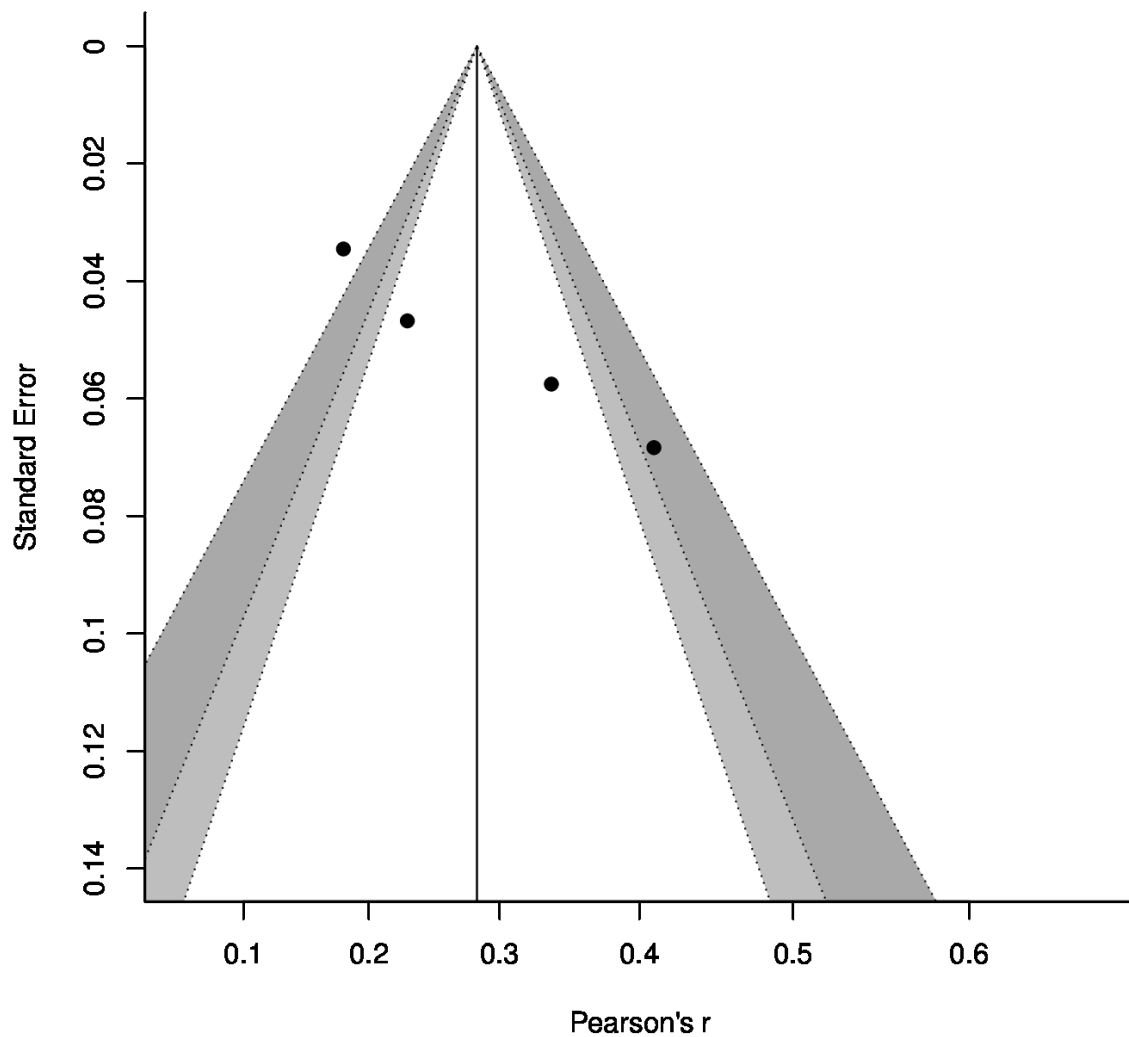


Figure 7: Funnel plot of effect sizes for sleepiness and stress. Vertical line centred on pooled effect size ($r = .28$), light grey = 90-95 confidence region, dark grey = 95-99% confidence region.