



OPEN

DATA DESCRIPTOR

A Taxonomically-verified and Vouchered Checklist of the Vascular Plants of the Republic of Guinea

George Gosline¹✉, Ehoarn Bidault², Xander van der Burgt¹, Daniel Cahen¹, Gill Challen¹, Nagnouma Condé³, Charlotte Couch^{1,3}, Thomas L. P. Couvreur^{4,5}, Léo-Paul M. J. Dagallier⁶, Iain Darbyshire¹, Sally Dawson¹, Tokpa Seny Doré³, David Goyder¹, Aurélie Grall⁷, Pépé Haba³, Pierre Haba³, David Harris⁸, D. J. Nicholas Hind¹, Carel Jongkind⁹, Gbamon Konomou³, Isabel Larridon¹, Gwilym Lewis¹, Alexandra Ley¹⁰, Michael Lock¹, Eve Lucas¹, Sékou Magassouba³, Simon Mayo¹, Denise Molmou³, Alexandre Monro¹, Jean Michel Onana¹¹, Jorge Paiva¹², Alan Paton¹, Sylvia Phillips¹, Ghillean Prance¹, Alejandro Quintanar¹³, Saba Rokni¹, Toral Shah¹, Brian Schrire¹, André Schuiteman¹, Ana Rita Giraldes Simões¹, Marc Sosef⁹, Tariq Stévant^{2,9}, R. Doug Stone¹⁴, Tim Utteridge¹, Paul Wilkin¹, Martin Xanthos¹, Eimear Nic Lughadha¹✉ & Martin Cheek¹

The Checklist of the Vascular Plants of the Republic of Guinea (CVPRG) is a specimen-based, expert-validated knowledge product, which provides a concise synthesis and overview of current knowledge on 3901 vascular plant species documented from Guinea (Conakry), West Africa, including their accepted names and synonyms, as well as their distribution and status within Guinea (indigenous or introduced, endemic or not). The CVPRG is generated automatically from the Guinea Collections Database and the Guinea Names Backbone Database, both developed and maintained at the Royal Botanic Gardens, Kew, in collaboration with the staff of the National Herbarium of Guinea. A total of 3505 indigenous vascular plant species are reported of which 3328 are flowering plants (angiosperms); this represents a 26% increase in known indigenous angiosperms since the last floristic overview. Intended as a reference for scientists documenting the diversity and distribution of the Guinea flora, the CVPRG will also inform those seeking to safeguard the rich plant diversity of Guinea and the societal, ecological and economic benefits accruing from these biological resources.

Background & Summary

The conservation of biological diversity is a common concern of humankind, but states have sovereign rights over their own biological resources and are responsible for conserving their biodiversity and using their biological resources sustainably (Convention on Biological Diversity, <https://www.cbd.int>). A consequence of these rights and responsibilities is that each state needs an overview of the species present within their borders. Development and refinement of such inventories for plants was a major focus in the early 21st century, in response to the CBD's Global Strategy for Plant Conservation^{1,2}.

Many tropical countries face great challenges in preparing national plant inventories. The tropics are home to most of the c. 350,000 known vascular plant species, but their plant diversity is relatively poorly-documented, and vital reference materials are often inaccessible in herbaria overseas. Thus, herbarium research or fieldwork

¹Royal Botanic Gardens, Kew, Richmond, UK. ²Missouri Botanical Garden, St. Louis, USA. ³Herbier National de Guinée, UGAN-Conakry, Conakry, Guinea. ⁴DIADE, Univ Montpellier, CIRAD, IRD, Montpellier, France. ⁵Naturalis Biodiversity Centre, Botany Section, Leiden, The Netherlands. ⁶New York Botanical Garden, Bronx, USA. ⁷University of Basel, Basel, Switzerland. ⁸Royal Botanic Garden, Edinburgh, Scotland. ⁹Meise Botanic Garden, Meise, Belgium. ¹⁰Martin Luther University, Halle, Germany. ¹¹Université de Yaoundé 1, Cameroon; IRAD-Herbier National Camerounais, Yaoundé, Cameroon. ¹²University of Coimbra, Coimbra, Portugal. ¹³Real Jardín Botánico de Madrid CSIC, Madrid, Spain. ¹⁴University of KwaZulu-Natal, Durban, South Africa. ✉e-mail: g.gosline@kew.org; niclughadha@kew.org

regularly yields additions to the known flora: either species new to science^{3–8} or species known to science but documented for the first time in the country of interest.

The Checklist of Vascular Plants of the Republic of Guinea (CVPRG) is a comprehensive listing of all 3505 vascular plant species documented as occurring naturally within Guinea (3328 flowering plants, 177 pteridophytes). Also listed are 396 non-indigenous species recorded in Guinea, but introduced plants are less frequently collected so coverage is incomplete. For each vascular plant species reported from Guinea, we aimed to cite at least one expert-verified, collection-based record, including all taxa recorded in the Flore de la Guinée⁹ which documented 2633 indigenous angiosperm species. These voucher specimens provide auditable evidence of the occurrence of each taxon in Guinea.

The CVPRG is a specimen-based, expert-validated knowledge product, generated automatically from the Guinea Collections Database and the Guinea Names Backbone Database, both developed and maintained at the Royal Botanic Gardens, Kew (hereafter Kew), in collaboration with the National Herbarium of Guinea. Earlier iterations of CVPRG underwent expert review by 42 regional or taxon specialists who co-authored this data descriptor. The CVPRG is published in two formats: a Darwin Core Archive available from GBIF¹⁰ and a printable pdf available from Zenodo¹¹.

The Guinea Collections Database is based on an extract from Kew's Wet Tropics Africa database comprising records from environmental surveys for mining projects 2005–2015, records from botanical exploration and Red Listing activity in relation to Tropical Important Plant Areas¹² and specimen records cited by⁹ of taxa not represented in other sources. These records were complemented by: (i) data from GBIF for specimens deposited in herbaria at Kew, Missouri Botanical Garden and Muséum National d'Histoire Naturelle, Paris (K, MO, P; codes follow Index Herbariorum (Thiers, B.M. Index Herbariorum. <http://sweetgum.nybg.org/science/ih/>)); (ii) data from P georeferenced via the Guinea Biodiversity Information for Development (BID) project^{13–15}; data from MO, and from the herbaria of Meise Botanic Garden (BR) and Naturalis Biodiversity Centre (WAG) informed by the Rainbio database¹⁶.

The Guinea Names Backbone Database is based on a download from the African Plant Database (APD (version 4.0.0) Conservatoire et Jardin botaniques de la Ville de Genève and South African National Biodiversity Institute, Pretoria, <http://africanplantdatabase.ch> (accessed 29 July 2021)) for tropical Africa. This was complemented by records from Plants of the World Online (POWO. Facilitated by the Royal Botanic Gardens, Kew. <http://www.plantsoftheworldonline.org/2019-2022>) for all taxa reported in⁹.

Guinea is unusual among tropical African countries in having a recently published Flora⁹, but all data therein are over 30 years old, mostly over 50 years old. The first decades of the 21st century saw rapid growth in botanical fieldwork in Guinea, yielding numerous herbarium specimens documenting the Guinean flora. However, this period saw major tree-cover loss (25% in 2000–2018) in the Forestière region, home to Guinea's greatest known plant diversity¹⁷. Against a backdrop of habitat loss due to subsistence and cash-crop farming, exacerbated by growing threats from mining, CVPRG is a key resource for those researching, communicating about and seeking to safeguard Guinea's rich plant diversity and the social, ecological and economic benefits accruing from these biological resources. CVPRG provides an evidence-base for prioritising species for extinction risk assessment, and for species- or area-focused action plans. It will inform Guinea's forthcoming biodiversity management plan and serve both as a foundation for future research and a baseline against which change in Guinea's flora can be monitored.

Methods

Geographic and taxonomic scope. *Study area.* The geographic scope of our study is the Republic of Guinea (245,857 km²), also known as Guinea-Conakry, formerly Guinée Française or French Guinea, situated in West Africa (Fig. 1). The country is dominated by the Guinea Highlands. They form or influence the vegetation types that give Guinea its diverse flora and have many narrow endemics¹⁸. The Highlands are the highest and most extensive in coastal continental Africa west of the Cameroon Highlands which lie 2000 km to the east. The Guinea Highlands rise to between 1000–2000 m above sea-level and are divided into two portions, separated by a 500 m elevation saddle that coincides with the western frontier of Sierra Leone with Guinea. Major rivers such as the Niger, Senegal and Mano arise in the Highlands, hence the country is known as the “water tower” of West Africa. Rainfall is monsoonal, falling mainly in May–October. The highest rainfall occurs at the coast, Conakry (4000 mm/a) falling to 1000 mm/a near the border with Mali in the north. In the northwest, the Fouta Djallon highlands are entirely confined to Guinea except for some foothills in Mali and Senegal. The Fouta Djallon are sandstone table mountains with some lateritic bowal (grassland areas lacking trees). This formation was formerly connected with the American Guiana Shield and its tepuis before the opening of the Atlantic. The geologically different Loma-Man Highlands to the southeast fall mainly into Guinea, but extend from Mts Loma in northern Sierra Leone to the Man Mts of western Ivory Coast. The well-known Nimba mountains straddle the borders between Ivory Coast, Guinea, and Liberia.

The dominant intact vegetation types of Guinea are woodland and grassland. Much of the latter occurs on lateritic or sandstone hardpans (bowal) which are widespread and common, and sometimes seasonally inundated. Granitic inselbergs occur in clusters scattered across the country. The native vegetation is very reduced and fragmented, and agriculture is extensive. 96% of original forest was recorded as lost before the end of the 20th century¹⁹ and Guinea burns from end to end in the dry season due to fires set to promote forage for livestock. Wetland areas have been extended and modified for cultivation of West African rice (*Oryza glaberrima* Steud.), the traditional staple crop.

Taxonomic scope and biogeographic interest. Our study aims to encompass the vascular plants known to date from Guinea, highlighting the unique and relatively little-studied flora of this country which is perhaps best known to botanists for its amphi-Atlantic plant taxa. Most famously, the only indigenous Bromeliaceae species not restricted to the New World, *Pitcairnia feliciana* (A. Chev.) Harms & Mildbr. uniquely occurs in Guinea, as a localised

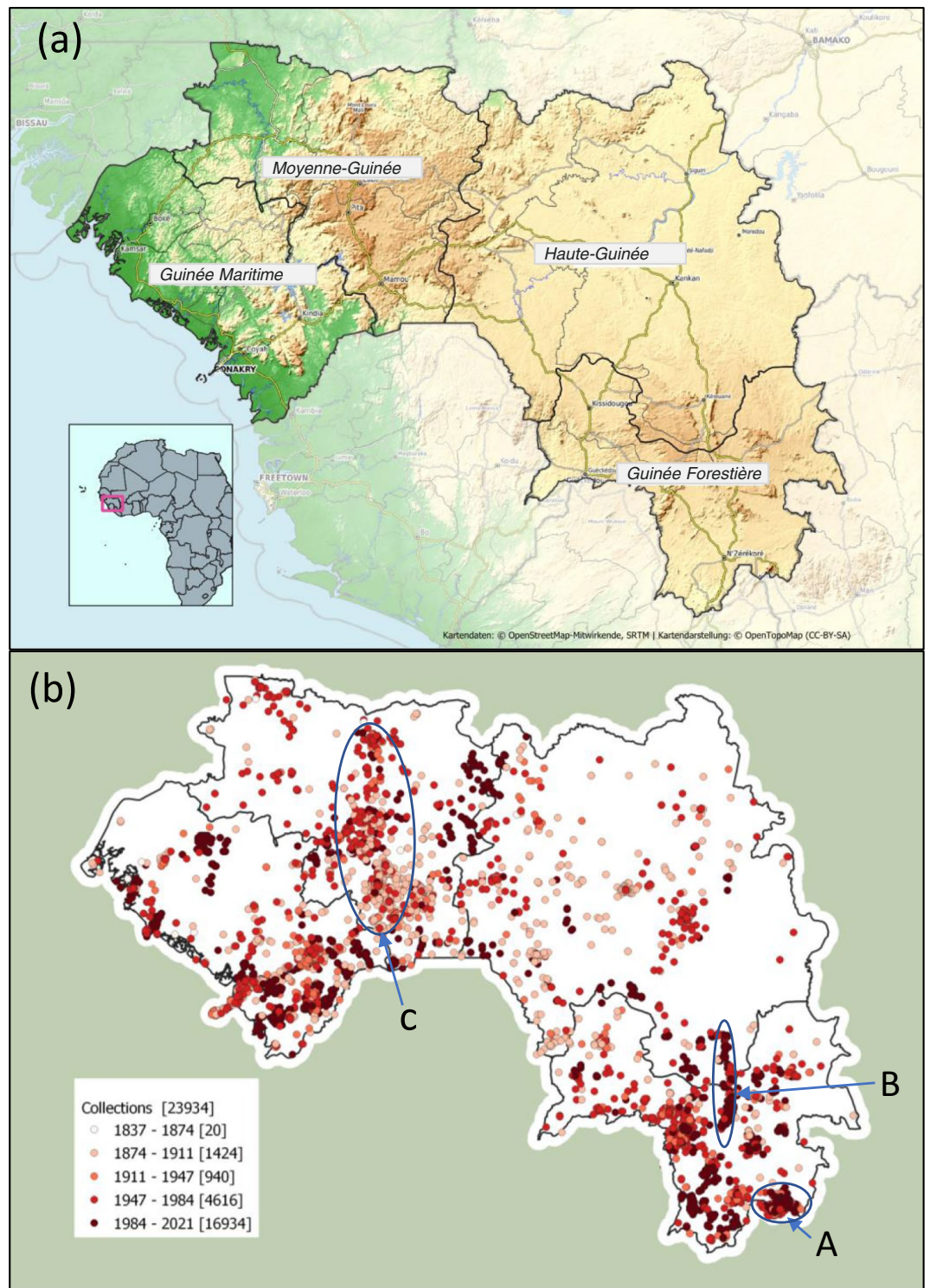


Fig. 1 Maps showing Guinea's location, political and geographic features (a), and distribution of botanical collections in space and time (b). (a) Map showing location in West Africa of Republic of Guinea and the four regions in which it is divided. Inset shows Guinea's location in West Africa. Main map shows boundaries of Guinea's four regions which are used to summarise species distributions in the Checklist of Vascular Plants of the Republic of Guinea. (b): Map of collection locations of the georeferenced collections in the Guinea Collections Database. Spatial biases in collecting patterns include the following collecting 'hotspots': **A** Mts Nimba; **B** Mts Simandou; **C** around the major towns of the Fouta Djallon: Mamou, Dalaba, Pita, Labe and Mali.

sandstone cliff endemic of the Fouta Djallon. Less well-known is that the lowland wetland species *Maschalocephalus dinklagei* Gilg & K. Schum., the only Rapateaceae species not restricted to the New World, also occurs in Guinea, as well as in neighbouring Sierra Leone and Liberia²⁰. Similarly, molecular phylogenetic data have shown that

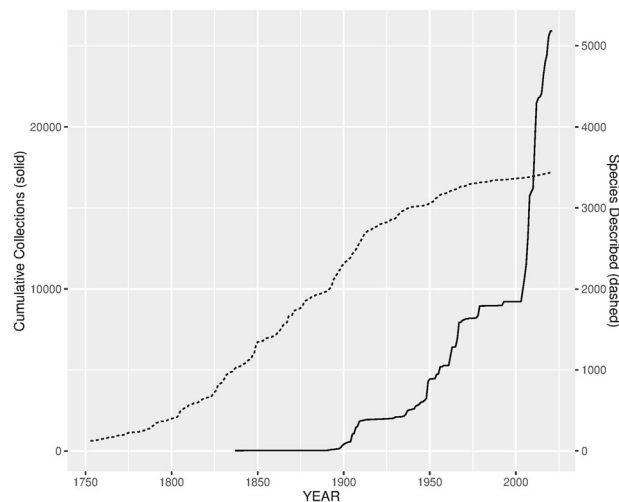


Fig. 2 Growth in numbers of plant species known from Guinea and in the numbers of herbarium specimens documenting the Guinea flora. Increase over time in: (i) plant species recorded from the Republic of Guinea, plotted (dashed trace) by the date when species was first described (which may predate their first record from Guinea by many years) and (ii) herbarium specimens collected in Guinea and incorporated in the Guinea Plant Collections database, plotted (solid trace) by their year of collection.

Flerydora felicis A. Chev. a monotypic tree also endemic to sandstone cliffs, is the only African representative of an otherwise New World clade of Ochnaceae²¹. It is likely that further molecular phylogenetic research will uncover more such amphi-Atlantic disjunctions such as the recent discovery that *Soyauxia* Oliv. (formerly Medusandraceae) is in fact an African member of the Peridiscaceae, until then considered endemic to S America^{22,23}.

Baseline resources and rationale for methodological choices. *Existing documentation of Guinea vascular plants.* The Flora of Guinea was considered well-known due to the surveys that began in 1837 with the collections of Heudelot (which were often misleadingly labelled as Senegambia). During the French colonial period (1898–1958) sampling was expanded by collectors such as Chevalier, Jacques-Félix, Adam and Schnell who also published new records and taxa new to science based on their collections and those of others. The culmination of this work was the Flore (Angiospermes) de la République de Guinée⁹ which is largely extracted from the Flora of West Tropical Africa²⁴, greatly augmented by c. 4000 additional records made by Lisowski in the post-colonial period (1958 onwards) when Guinea was supported by the Soviet Union. Lisowski completed his Flora in 2000 but publication was delayed until 2009. He mainly followed the generic and family concepts of²⁴, and recorded 2633 indigenous species of angiosperms and a further 395 cultivated or introduced angiosperm species.

However, botanical surveys in the 21st century, principally in the Loma-Man of Guinea in connection with proposed mining projects in or near the Simandou and Nimba ranges, increased the numbers of herbarium specimens and of recorded plant species known for Guinea^{25–29} (Fig. 2). This continued with the initiation in 2016 of the Guinea Tropical Important Plant Areas (TIPA) programme^{30–33}, which seeks to identify, document and delineate areas of particular importance for plant conservation within Guinea.

Choice of specimen-based approach. It is possible to extract plant species checklists for countries or regions of interest from global resources such as Plants of the World Online (<http://www.plantsoftheworldonline.org>) but such lists can inflate species numbers³⁴, and are not usually verifiable by means of voucher specimens cited for each area from which the species is reported (specimen-based). Therefore, development of an updated, expert-verified, specimen-based checklist with authoritatively updated nomenclature was the preferred approach to provide a solid, evidence-based foundation both for future research and for biodiversity management. We sought to report all vascular plant species known to occur naturally within Guinea, each supported by at least one authoritatively identified voucher specimen collected within Guinea, deposited in a collection and accessible to researchers, physically and/or digitally.

Data acquisition and processing. Creating a comprehensive, contemporary specimen-based checklist of a region requires two parallel workflows:

- Gathering all available data on field collections within the region and validation of identifications.
- Creating a “names backbone” of accepted taxon names and synonyms.

Here we describe data acquisition and processing for each of these workflows, before reporting how they were brought together for iterative checklist creation and expert validation steps.

Sources for specimens recorded in Guinea Collections database	Number of Records
P	6067
K	11919
WAG	3605
POZG	3502
MO	2998
BR	187
RainBio ¹⁶ record - specimen not seen	2365
Lisowski Flora ⁹ - no herbarium catalogue number	1034
Taxonomic specialists (including Roux ⁶²)	35

Table 1. Summary of sources of collections data recorded in the Guinea Collections Database, from which the Checklist of Vascular Plants of the Republic Guinea was compiled. Herbarium codes follow Index Herbariorum (Thiers, B.M. Index Herbariorum. <http://sweetgum.nybg.org/science/ih/>): P = Muséum National d'Histoire Naturelle, Paris; K = Royal Botanic Gardens, Kew; WAG = Naturalis Biodiversity Centre, Leiden; POZG = Adam Mickiewicz University, Poznan; MO = Missouri Botanical Garden; BR = Meise Botanic Garden.

Collections data acquisition. Plant specimen data was collected from a variety of existing digital resources including herbarium collection databases at the Royal Botanic Gardens, Kew (K), the Missouri Botanical Garden (MO), and the MNHN, Paris (P), the herbarium at Adam Mickiewicz University (POZG), the herbarium of the Naturalis Biodiversity Centre (WAG), from GBIF^{35–38}, and from datasets developed for earlier projects including Guinea BID^{13–15}, Guinea TIPAs and Rainbio¹⁴. Data were also extracted from Lisowski's Flore de la Guinée⁹. All our collections data sources are detailed in Table 1. This data was reduced to a common record format and consolidated in a Microsoft Access database, the Guinea Collection Database comprising 32330 records.

We aimed to ensure that collections coverage in this database was sufficient to have at least one expert-verified collection-based record cited of each vascular plant taxon found in Guinea, including all taxa recorded in the Flore de la Guinée⁹. A secondary objective was to obtain an idea of the geographic range of each taxon within Guinea (28164 collections are georeferenced at varying levels of accuracy). We have not attempted to record in our database every plant collection ever made in Guinea nor to georeference all specimens, an endeavour beyond the scope of the project.

Collections data processing. All taxon names obtained from specimens are standardised to accepted names based on our names backbone database (see below). When specimens are collected, duplicates are generally sent to several herbaria. There may be several specimen records for any given collection event and therefore individual plant. A process of deduplication based on matching collection number, taxon name, and date was performed; a preferred duplicate was selected with the most complete metadata. 1486 duplicate records have been excluded from the analysis.

Names data acquisition. A custom names backbone database was built, the Guinea Names Backbone Database. The starting point was a download in 2019 from the African Plant Database (APD (version 4.0.0), Conservatoire et Jardin botaniques de la Ville de Genève and South African National Biodiversity Institute, Pretoria, <http://africanplantdatabase.ch> (accessed 29 July 2021)) for the tropical Africa area. From Plants of the World Online (POWO, facilitated by the Royal Botanic Gardens, Kew. <http://www.plantsoftheworldonline.org/2019-2022>) records for all taxa in⁹ and all taxa shown as present in Guinea were downloaded and the information matched by taxon name and added to the Guinea Names Backbone Database. Data records have been added for taxa new to science as they have been published. Resources consulted during compilation included publications describing species or genera new to science^{39–42}; other taxonomic literature such as taxonomic monographs, revisions, synopses or checklists^{43–66}; phylogenetic studies^{67–75}; nomenclatural updates^{76–81}; collectors' biographies or itineraries^{82,83}; and the following online data resources resulting from earlier and/or ongoing compilation endeavours: the BioPortal of Naturalis Biodiversity Centre (<https://bioportal.naturalis.nl>); the Botanical Collections resource hosted by Meise Botanic Garden (<http://www.botanicalcollections.be/#/en/home>); the AMUNATCOLL Database of Natural History Collections of the Faculty of Biology Adam Mickiewicz University, Poznan (<https://amunatcoll.pl>); Hassler, M. (2004 - 2021): World Ferns. Synonymic Checklist and Distribution of Ferns and Lycophytes of the World. Version 12.4 (<https://www.worldplants.de/world-ferns/ferns-and-lycophytes-list>); Missouri Botanical Garden's Tropicos (<http://www.tropicos.org/Home.aspx>).

Names data processing. Lisowski's Flore (Angiospermes) de la République de Guinée⁹ was taken as a starting point for synonymy in the printable version of the CVPRG¹¹. We endeavoured to ensure that any taxon name that is accepted by Lisowski⁹ or is a current specimen identification, but which is no longer considered an accepted name, is included in synonymy in CVPRG. This pragmatic decision was based on the primary objective: to produce a useful checklist reflecting current taxonomy, and it follows established practice in the region^{84–90}. More comprehensive synonymy data based on 31,357 synonyms derived from World Checklist of Vascular Plants (now available via POWO <https://powo.science.kew.org/about-wcwp>) was incorporated in the Darwin Core Archive version of the CVPRG downloadable from GBIF¹⁰.

Checklist generation and expert validation. *Names data expert validation.* The expert opinions of 42 checklist authors, each specialising in a different taxonomic group or in the flora of the region as a whole (Supplementary Table 1), were used to clean the Guinea Names Backbone Database. Where sources disagreed as to the accepted name and synonymy, a choice has been made by the specialist concerned. For groups where no specialist was available (e.g. Moraceae, Vitaceae), APD was followed.

Collections data expert validation. Collection records from the Guinea Collections Database were sent to the expert reviewers along with draft checklist family reports. Experts were not asked to confirm every collection determination, but rather to review taxa with few collections (generally three or fewer) or outside of recorded distributions shown on POWO. The vast majority of taxon name changes since 2010 are due to nomenclatural changes. Guinea species which lacked taxonomist-verified records from any other country were assigned as endemics (Supplementary Table 2) after checking herbarium records, APD, POWO, GBIF, and taxonomic literature^{9,20,26,30,31,91–104}.

Generation of the checklist. The checklist is generated automatically from the Guinea Collections Database and the Guinea Names Backbone Database. This prevents the databases and text copy from getting out of sync. The collections are grouped and summarized using Access queries (SQL) and exported to an XML file. This file was then used to generate versions of the checklist in Word document form for publication as a printable pdf¹¹ and as Darwin Core data¹⁰ which was uploaded to GBIF using their Integrated Publishing Toolkit (IPT, <https://www.gbif.org/ipt>), applying GBIF guidelines for checklist publication (<https://ipt.gbif.org/manual/en/ipt/latest/checklist-data>).

Each expert screened and annotated draft checklist accounts of the taxa in which they specialise (Supplementary Table 1) in late 2019, in mid-2021 and finally, in mid-2022. Final updates to the checklist were made in August 2022. All changes were incorporated in the Guinea Collections Database and Guinea Names Backbone Database before the creation of the printable version of the checklist¹¹ and the corresponding Darwin Core dataset¹⁰.

Structure of the printable checklist. Data records from the Guinea Collections Database and Guinea Names Backbone Database are grouped and summarised to create family lists comprising one or more species treatments. Within the checklist, the angiosperm families are ordered following Angiosperm Phylogeny Group IV¹⁰⁵, while the Pteridophytes follow WorldFerns (Hassler, Michael (2004 - 2022): World Ferns. Synonymic Checklist and Distribution of Ferns and Lycophytes of the World. Version 14.2 - www.worldplants.de/ferns/).

Each species treatment includes the accepted species name and, where applicable, selected synonyms. Species treatments also include: an indication as to whether the species is considered endemic to Guinea or introduced to Guinea; voucher information in the form of key details for one preserved specimen, representing auditable evidence of the presence of the species in Guinea; followed by geographic distribution data summarising the frequency of collection records from each of the major regions of Guinea.

Within each family, accepted names of indigenous and introduced species are ordered alphabetically in a single sequence by genus and specific epithet. Selected synonyms, if any, appear immediately below their accepted name. Data for infraspecific taxa (subspecies or varieties) appear below the corresponding species entry. Details of publishing authors follow each name at species or infraspecific rank, except for autonyms.

The most recent specimen in the Guinea Collections Database of each species or infraspecific taxon is generally presented as a voucher. The voucher information usually comprises the collector(s) name(s) and collecting number, followed by the date of collection and, where available, an ID unique to that specimen (usually a barcode). This allows users to rapidly find and view any corresponding specimen details and images made available by the herbarium where the specimen is deposited (indicated by an alphabetical prefix to the ID number) or via an aggregator such as GBIF. No digital record of a herbarium specimen has been located for 642 species. 157 species are vouchered by K specimens which have not yet received a barcode (indicated by “WTA” in the barcode field). 413 taxa are vouchered by specimens cited in Lisowski⁹, indicated by “Lisowski” or “Berhaut” in the barcode field. The majority of these have collection information, with the specimens believed to be at Paris (P) where, although digitised, specimen images are not yet available for searching by country, due to minimal transcription of label data. Future work is planned to locate and validate the Paris specimens. 28 fern taxa are included based on distribution data in Roux’s Synopsis of the Lycopodiophyta and Pteridophyta of Africa, Madagascar and neighbouring islands⁶² and therefore marked as “lit.” A few collections are supplied by researchers with no barcodes. Where no specimen is known to exist, an observation reported by Lisowski⁹ is listed in place of a voucher citation. 75 species are included based solely on observations recorded in Lisowski⁹. Of these 63 are introduced species. Thus, all but 12 indigenous angiosperm species are vouchered.

Each species treatment ends with a summary of the relevant specimens available for Guinea as a whole (‘Total’), followed by a breakdown of collections number for each of the four geographic regions of Guinea: Guinée Forestière (GF), Haut Guinée (HG), Moyenne Guinée (MG), Guinée Maritime (GM, = Basse Guinée (GN-BA) in¹⁰) (See Fig. 1a). These collection counts give an indication of the relative frequency of each species across Guinea’s regions but should be considered with caution in light of known biases in sampling intensity (Fig. 1b). Collection counts for species and their infraspecific taxa may differ where some collections are identified to species-level but not to variety or subspecies.

Statistical overview of the checklist. The CVPRG records a total of 3505 indigenous species known from Guinea, of which 3328 are angiosperms and the remaining 177 are pteridophytes. Thus, the total number of angiosperms considered indigenous to Guinea is now 26% greater than the 2633 species reported by Lisowski⁹. In

DwC Taxon core	
Field Name	Notes
id	Taxon identifier. The numeric portion of the IPNI Life Sciences Identifier (LSID) for the taxon.
taxonID	The taxon identifier. Same as the id field above.
family	The name of the family to which the taxon belongs.
specificEpithet	The species epithet which is combined with the genus name to make a binomial name for a species
infraSpecificEpithet	The infraspecific epithet which is combined with a binomial to make a trinomial name at infraspecific rank, most commonly a subspecies or variety
scientificName	Concatenation of genus with species and, where applicable, infraspecific epithets to make a binomial or trinomial name
scientificNameAuthorship	The author or authors responsible for publication of the scientific name
taxonRank	The level in the taxonomic hierarchy where the taxon name fits
taxonomicStatus	Indication of taxonomic opinion re the name: accepted, synonym or unplaced
acceptedNameUsageID	Taxon number (taxonID) of the accepted name for a synonym (found in this same file).
parentNameUsageID	taxonID of the species record for varieties and subspecies.

Table 2. Content of Taxon core data download available from GBIF. Field names (which appear as column headers in the download) and explanatory notes on their content.

total, 81 species and one subspecies are reported as endemic to Guinea (i.e. 2% of the known flora). A further 26 species and one subspecies previously considered endemic to Guinea are reported as occurring in other countries (See Supplementary Table 2 for a complete list of endemic species, and those previously considered endemic, with life form and habitat for each). Of the 39 species and one subspecies occurring in Guinea which have been reported as new to science since Lisowski's Flora⁹, 14 (35%) are known only from Guinea and six of these have been assessed as Endangered or Critically Endangered on the IUCN Red List of Threatened Species. The remaining eight species await assessment. (See Supplementary Table 3 for a complete list of these species with habitat, IUCN category (where available) and distribution beyond Guinea (where applicable)).

Data Records

The download of the data set(s) is available via the GBIF.org repository under a CC-BY 4.0 Licence in a Darwin Core Archive File.

The CVPRG has been published as a Checklist dataset¹⁰ on GBIF. The data may be examined and downloaded from GBIF: <https://doi.org/10.15468/f5gb45>.

Darwin Core Archive (DwC-A) is a standardized format for sharing biodiversity data as a set of one or more data tables. The Taxon core data table contains 34,048 records, each with the data fields listed in Table 2. These comprise 4,195 accepted names and 29,821 synonyms. The IPNI plant ID (<https://www.ipni.org>) is used as the stable identifier for taxa.

Two extension data tables are also part of the DwC Archive. An extension record supplies extra information about a core record.

The Occurrence extension contains one record per taxon, that of the voucher specimen chosen to evidence the presence of the taxon within Guinea. It comprises 4024 voucher records in total, each with the data fields listed in Table 3.

The Species Distribution extension contains one or more records per taxon: one for the country and one for each region within Guinea from which the Guinea Collections database contains at least one specimen of the taxon, making 10419 records in total, each with the data fields listed in Table 4.

Together, the data in the three data tables described above (Tables 2–4) include all the data presented in the CVPRG with the following exceptions: (i) the indication of species considered endemic to Guinea; (ii) the numbers of specimens of each species known from Guinea as a whole and from each of the four regions of Guinea. These omissions are due to the limitations of the Darwin Core format.

Technical Validation

The checklist was built and formatted directly from the Guinea Collections Database, avoiding transcription errors. Where three or fewer collections exist for a taxon, the specimens have been examined by taxonomic experts to validate the identifications.

Our Guinea Names Backbone Database was constructed based on a download of the African Plant Database 15/01/2019. Data from POWO for taxa in the TDWG Guinea area were downloaded and matched to the APD data. Where the two sources did not match, the experts' opinions were used to select an accepted name. Further names from recent literature have been incorporated (See under Names Data Acquisition above). In all cases, the opinions of the checklist authors have been followed.

All names were automatically checked against our Guinea Names Backbone Database. This process resolved all names to the accepted name for the checklist. Any synonyms found to be current on specimens were automatically included in the synonyms list.

Authors and basionyms were copied from the Guinea Names Backbone Database, again avoiding transcription errors. Where homonyms exist (identical binomials or trinomials intended to refer to different entities), the collection and geographic range were checked to verify the correct author string.

DwC Taxon Occurrence extension	
Field Name	Notes
id	taxonID of associated taxon
basisOfRecord	Always "MaterialCitation" indicating a voucher
occurrenceID	Unique identifier for occurrence record
catalogNumber	Barcode of the specimen when available. First letters indicate herbarium where specimen is deposited. For specimens lacking barcodes, "Lisowski" indicates source is Lisowski's Flora.
recordNumber	Collector's collection number
recordedBy	Collector
eventDate	Date of collection
countryCode	Always GN
decimalLatitude	When available
decimalLongitude	When available
taxonID	taxonID of the associated taxon. (Same as id)
scientificName	Full scientific name without author

Table 3. Content of Taxon Occurrence data download available from GBIF. Field names (which appear as field headers in the download) and explanatory notes on their content.

DwC Taxon Species Distribution extension	
Field Name	Notes
id	taxonID to which the record refers
locationID	Region of Guinea from which specimen of taxon is in Guinea Collections Database:
	GN-BA Basse-Guinée
	GN-FO Guinée Forestière
	GN-HA Haute-Guinée
	GN-MO Moyenne-Guinée
locality	Basse-Guinée
	Guinée Forestière
	Haute-Guinée
	Moyenne-Guinée
countryCode	Always GN
establishmentMeans	"native" or "introduced" Note that many introduced species are now naturalized.

Table 4. Content of Taxon Species Distribution data download available from GBIF. Field names (which appear as field headers in the download) and explanatory notes on their content.

Collections were automatically assigned to geographic region based on their geographic coordinates available. All collections bearing geolocation data beyond Guinea's borders were checked and either their coordinates were corrected, or the collections were excluded from the checklist.

Usage Notes

Like almost any resource documenting a tropical flora, the CVPRG will be out of date almost as soon as it is published. In fact, publication of a checklist has been shown to stimulate publication of further research on the flora documented. In Guinea, new data on the flora can be expected to include: descriptions of species new to science; records of species already known to science but recorded for the first time in Guinea; new perspectives on the endemism of species currently known only from Guinea; assessments of the extinction risk of species occurring in Guinea; reports on cultural and economic uses of Guinea plants.

Depending on their reasons for consulting the CVPRG, potential users may also wish to consult additional resources to obtain as complete a picture as possible on one or more of the above aspects for the subset of species of interest to them. Here we itemize some of the key resources of relevance for obtaining updates on the different facets of the data.

Species described as new to science. Description of species new to science^{3–8,20,25–29,31–33,39,48,49,55,62,66,92,97–100,103,104,106–112} has accelerated in Guinea in the past 10 to 15 years (see Supplementary Table 3 for examples) and this trend looks set to continue. Users wishing to find details of Guinea species described as new to science post-dating our work should consult the International Plant Names Index (IPNI, International Plant Names Index. <http://www.ipni.org>, The Royal Botanic Gardens, Kew, Harvard University Herbaria & Libraries and Australian National Botanic Gardens 2022) in the first instance, as newly published species are indexed there throughout the year and the web resource is updated daily. These newly described species will also appear in APD and POWO eventually.

Species newly recorded as present in Guinea. The majority of the growth in numbers of indigenous species known from Guinea arises from extensions to the known range of species already known from elsewhere in Africa. The specimens evidencing such changes to known ranges may be sought in aggregators such as GBIF or collection lists such as Tropicos. Such range extensions will be reflected in APD and POWO eventually.

Corrections to the endemism status reported for Guinea plants. Corrections to the endemism status reported for Guinea plants may be sought in aggregators such as GBIF or collection catalogues such as Tropicos. A more fully informed view on the endemism status of many species must await completion of digitisation of the African collections at Kew and completion of digitisation of label data from MNHN (P).

Assessments of the extinction risk of Guinea plants. Data on the extinction risk of many Guinea vascular plant species can be found on the IUCN Red List of Threatened Species (IUCN. 2022. The IUCN Red List of Threatened Species. Version 2022-1. <https://www.iucnredlist.org>), to which new assessments are added two or three times per year. Assessment efforts are ongoing, most recently within the framework of the Guinea Tropical Important Plant Areas programme.

Overview and site-specific data. Data on any or all of the above topics may also be found in the data sheets which support recognition and delineation of Tropical Important Plant Areas in Guinea, available via the Tropical Important Plant Areas Explorer (Royal Botanic Gardens, Kew. Tropical Important Plant Areas Explorer texas.kew.org)

Code availability

No custom code was used to generate this dataset.

Received: 14 November 2022; Accepted: 15 May 2023;

Published online: 26 May 2023

References

1. Paton, A. J. *et al.* Towards Target 1 of the Global Strategy for Plant Conservation: a working list of all known plant species—progress and prospects. *Taxon* **57**, 602–611, <https://doi.org/10.2307/25066027> (2008).
2. Paton, A. & Nic Lughadha, E. The irresistible target meets the unachievable objective: what have 8 years of GSPC implementation taught us about target setting and achievable objectives? *Bot. J. Linn. Soc.* **166**, 250–260, <https://doi.org/10.1111/j.1095-8339.2011.01155.x> (2011).
3. Bidault, E., Lowry, P. P. & Stévant, T. *Polystachya orophila* (Orchidaceae, Polystachyinae), a new species from tropical West Africa, and clarification on the nomenclature and taxonomy of *P. microbambusa*. *Phytotaxa* **260**, 247–257, <https://doi.org/10.11646/phytotaxa.260.3.4> (2016).
4. Jongkind, C. C. *Cola baldwinii* (Malvaceae: Sterculioideae), a new forest tree species from Liberia, Sierra Leone and Guinée. *Plant Ecology and Evolution* **146**, 246–249, <https://doi.org/10.5091/plecevo.2013.801> (2013).
5. Jongkind, C. C. Two new *Gaertnera* species (Rubiaceae) from West Africa. *Willdenowia* **48**, 391–397, <https://doi.org/10.3372/wi.48.48308> (2018).
6. Prance, G. T. & Jongkind, C. C. A revision of African Lecythidaceae. *Kew Bull.* **70**, 1–68, <https://doi.org/10.1007/S12225-014-9547-4> (2015).
7. Breteler, F. J. Description of a new species of *Neuropeltis* (Convolvulaceae) with a synopsis and a key to all African species. *Plant Ecology and Evolution* **143**, 176–180, <https://doi.org/10.5091/plecevo.2010.387> (2010).
8. Breteler, F. J. & Wieringa, J. J. A synopsis of *Mendoncia* (Acanthaceae) in continental Africa including the description of two new species from western Central Africa and a new subspecies from West Africa. *Blumea* **63**, 109–119, <https://doi.org/10.3767/blumea.2018.63.02.03> (2018).
9. Lisowski, S. Flore (Angiospermes) de la République de Guinée. *Scripta Botanica Belgica* **41** (2009).
10. Gosline, G. *et al.* Checklist of the Vascular Plants of the Republic of Guinea. Version 1.10. *Herbier National de Guinée (HNG)* <https://doi.org/10.15468/f5gb45> (2023).
11. Gosline, G. *et al.* Checklist of the Vascular Plants of the Republic of Guinea—printable format (1.10). *Zenodo*. <https://doi.org/10.5281/zenodo.7734985> (2023).
12. Darbyshire, I. *et al.* Important Plant Areas: revised selection criteria for a global approach to plant conservation. *Biodiversity and Conservation* **26**, 1767–1800 (2017).
13. Magassouba, S., Sow, B., Guilavogui, P., Condé, N. & Doré, T. S. La liste Rouge des plantes menacées de la Guinée (BID-AF2015-0042-NAC). *Herbier National de Guinée (HNG)*. <https://doi.org/10.15468/rqn53h> (2017).
14. Sow, B., Doumbouya, S., Guilavogui, P., Condé, N. & Doré, T. S. La seconde liste Rouge des plantes menacées de la Guinée (BID-AF2015-0042-NAC). *Herbier National de Guinée (HNG)* <https://doi.org/10.15468/1so6av> (2018).
15. Magassouba, S., Guilavogui, P., Sow, B. & Doré, T. S. La liste (3) Rouge des plantes menacées de la Guinée. *Herbier National de Guinée (HNG)* <https://doi.org/10.15468/fyscsm> (2019).
16. Dauby, G. *et al.* RAINBIO: a mega-database of tropical African vascular plants distributions. *PhytoKeys* **74**, 1–18, <https://doi.org/10.3897/phytokeys.74.9723> (2016).
17. Fitzgerald, M., Nackoney, J., Potapov, P. & Turubanova, S. Agriculture is the primary driver of tree cover loss across the Forestière region of the Republic of Guinea, Africa. *Environmental Research Communications* **3**, 121004, <https://doi.org/10.1088/2515-7620/ac4278> (2021).
18. Couch, C. *et al.* Piloting development of species conservation action plans in Guinea. *Oryx*, 1–10 <https://doi.org/10.1017/S0030605322000138> (2022).
19. Sayer, J.A., Harcourt, C.S. & Collins, N.M. *The Conservation Atlas of Tropical Forests: 485 Africa*. (IUCN and Simon and Schuster, Cambridge, 1992)
20. Cheek, M., Haba, P. M., Konomou, G. & van der Burgt, X. M. *Ternstroemia guineensis* (Ternstroemiaceae), a new endangered, submontane shrub with neotropical affinities, from Kounounkan, Guinea, W. Africa. *Willdenowia* **49**, 351–360, <https://doi.org/10.3372/wi.49.49306> (2019).
21. Schneider, J. V. *et al.* Phylogenetics, ancestral state reconstruction, and a new infrafamilial classification of the pantropical Ochnaceae (Medusagynaceae, Ochnaceae s. str., Quiinaceae) based on five DNA regions. *Molecular phylogenetics and evolution* **78**, 199–214, <https://doi.org/10.1016/j.ympev.2014.05.018> (2014).

22. Breteler, F. J., Bakker, F. T. & Jongkind, C. C. A synopsis of *Soyauxia* (Peridiscaceae, formerly Medusandraceae) with a new species from Liberia. *Plant Ecology and Evolution*. **148**, 409–419, <https://doi.org/10.5091/plecevo.2015.1040> (2015).
23. Soltis, D. E. *et al.* Monophyly and relationships of the enigmatic family *Peridiscaceae*. *Taxon* **56**, 65–73, <https://doi.org/10.2307/25065736> (2007).
24. Keay, R. W. J., Hepper, F. N., & Alston, A. H. G. *Flora of West Tropical Africa. Vol 1-3.* (Crown Agents for Oversea Governments and Administrations, London, 1954-1972)
25. Goyder, D. J. *Xysmalobium samoritourei* (Apocynaceae: Asclepiadoideae), a new species from the Guinea Highlands of West Africa. *Kew Bull.* **63**, 473–475, <https://doi.org/10.1007/s12225-008-9059-1> (2009).
26. van der Burgt, X. M., Haba, P. K., Haba, P. M. & Goman, A. S. *Eriosema triforum* (Leguminosae: Papilionoideae), a new unifoliolate species from Guinea, West Africa. *Kew Bull.* **67**, 263–271, <https://doi.org/10.1007/s12225-012-9357-5> (2012).
27. Cheek, M. & van der Burgt, X. *Gymnosiphon samoritoureanus* (Burmanniaceae) a new species from Guinea, with new records of other achlorophyllous heteromycotrophs. *Kew Bull.* **65**, 83–88, <https://doi.org/10.1007/s12225-010-9180-9> (2010).
28. Fischer, E., Darbyshire, I. & Cheek, M. *Striga magnibracteata* (Orobanchaceae), a new species from Guinée and Mali. *Kew Bull.* **66**, 1–5, <https://doi.org/10.1007/s12225-011-9296-6> (2012).
29. Cheek, M. & Williams, T. *Psychotria samoritourei* (Rubiaceae), a new liana species from Loma-Man in Upper Guinea, West Africa. *Kew Bull.* **7**, 1–6, <https://doi.org/10.1007/S12225-016-9638-5> (2016).
30. Couch, C., *et al.* *Threatened Habitats and Tropical Important Plant Areas (TIPAs) of Guinea, West Africa.* (Kew: Royal Botanic Gardens, Kew, 2019.)
31. Cheek, M., Haba, P. K. & Cisse, S. *Hibiscus fabiana* sp. nov. (*Malvaceae*) from the Guinea Highlands (West Africa). *Blumea* **65**, 69–74, <https://doi.org/10.3767/blumea.2020.65.01.08> (2020).
32. Cheek, M. & Haba, P. M. Spiny African *Allophylus* (Sapindaceae): a synopsis. *Kew Bull.* **71**, 57, <https://doi.org/10.1007/S12225-016-9672-3> (2016).
33. Phillipson, P., Hooper, O., Haba, P., Cheek, M. & Paton, A. Three species of *Coleus* (Lamiaceae) from the Guinean Highlands: a new species, a new combination and clarification of *Coleus splendidus*. *Kew Bull.* **74**, 24, <https://doi.org/10.1007/s12225-019-9812-7> (2019).
34. Camara-Leret, R. *et al.* New Guinea has the world's richest island flora. *Nature* **584.7822**, 579–583, <https://doi.org/10.1038/s41586-020-2549-5> (2020).
35. Occdownload GBIF.org. GBIF Occurrence Download *The Global Biodiversity Information Facility* <https://doi.org/10.15468/dl.lmsnoy> (2019).
36. Occdownload GBIF.org. GBIF Occurrence Download. *The Global Biodiversity Information Facility* <https://doi.org/10.15468/dl.dz8qrk> (2021).
37. Occdownload GBIF.org. (08 October 2021) GBIF Occurrence Download. *The Global Biodiversity Information Facility* <https://doi.org/10.15468/dl.t5yqhk> (2021).
38. Occdownload GBIF.org. GBIF Occurrence Download. *The Global Biodiversity Information Facility* <https://doi.org/10.15468/dl.etpf8v> (2022).
39. Verloove, F., Browning, J. & Mesterhazy, A. *Pycreus rubidomontanus* (Cyperaceae), a widespread but undescribed species from tropical West Africa. *Phytotaxa* **405**, 83–90, <https://doi.org/10.11646/phytotaxa.405.2.3> (2019).
40. Cheek, M. & Lebbie, A. *Lebbiea* (Podostemaceae-Podostemoideae), a new, nearly extinct genus with foliose tepals, in Sierra Leone. *Plos one* **13**, e0203603, <https://doi.org/10.1371/journal.pone.0203603> (2018).
41. Cheek, M. *et al.* Discovering Karima (Euphorbiaceae), a New Crotonoid Genus from West Tropical Africa Long Hidden within Croton. *PLOS ONE* **11**, e0152110, <https://doi.org/10.1371/journal.pone.0152110> (2016).
42. Vianna F, M. D. M., Maia, V. H., Mansano, V. D. F. & da Costa, A. F. Maria, a new genus of Moraceae. *Albertoa* **38**, 289–292 (2013).
43. Berg, C. C. Revisions of African Moraceae (Excluding *Dorstenia*, *Ficus*, *Musanga* and *Myrianthus*). *Bulletin du Jardin botanique National de Belgique/Bulletin van de Nationale Plantentuin van België* **47**, 267–407 (1977).
44. Breteler, F. J. Revision of the African genus *Crotonogyne* (Euphorbiaceae). *Plant Ecology and Evolution* **151**, 352–379, <https://doi.org/10.5091/plecevo.2018.1445> (2018).
45. Chantarasuwan, B., Berg, C. C. & van Welzen, P. C. A Revision of *Ficus* Subsection *Urostigma* (Moraceae). *Systematic Botany* **38**, 653–686, <https://doi.org/10.1600/036364413X670241> (2013).
46. Cheek, M. & Luke, Q. *Calophyllum* (Clusiaceae – Guttiferae) in Africa. *Kew Bull* **71**, 20, <https://doi.org/10.1007/S12225-016-9637-6> (2016).
47. Cheek, M. *et al.* A synoptic revision of *Inversodicraea* (Podostemaceae). *Blumea* **62**, 125–156, <https://doi.org/10.3767/blumea.2017.62.02.07> (2017).
48. Champluvier, D. & Darbyshire, I. A revision of the genera *Brachystephanus* and *Oreacanthus* (Acanthaceae) in tropical Africa. *Syst. Geog. Pl.* **79**, 115–192 (2009).
49. Darbyshire, I., Pearce, L. & Banks, H. The genus *Isoglossa* (Acanthaceae) in west Africa. *Kew Bull.* **66**, 425–439, <https://doi.org/10.1007/s12225-011-9292-x> (2011).
50. Chen, X., He, H. & Zhang, L.-B. A monograph of the Anisophylleaceae (Cucurbitales) with description of 18 new species of Anisophyllea. *Phytotaxa* **229**, 1–189, <https://doi.org/10.11646/phytotaxa.229.1.1> (2015).
51. Chisumpa, S. M. & Brummitt, R. K. Taxonomic Notes on Tropical African Species of *Protea*. *Kew Bull.* **42**, 815–853 (1987).
52. Couch, C. *et al.* Threatened plants species of Guinea-Conakry: A preliminary checklist. <https://peerj.com/preprints/3451> 10.7287/peerj.preprints.3451v4 (2019).
53. Damen, T. H. J., Van der Burg, W. J., Wiland-Szymańska, J. & Sosef, M. S. M. Taxonomic novelties in African *Dracaena* (Dracaenaceae). *Blumea-Biodiversity, Evolution and Biogeography of Plants* **63**, 31–53, <https://doi.org/10.3767/blumea.2018.63.01.05> (2018).
54. Descourvières, P. *et al.* A new genus of angraecoid orchids (Orchidaceae: Angraecinae) with highly distinctive pollinaria morphology, including three new species from tropical West and Central Africa. *Phytotaxa* **373**, 99–120, <https://doi.org/10.11646/phytotaxa.373.2.1> (2018).
55. Droissart, V. *et al.* Synopsis of the Genus *Chamaeangis* (Orchidaceae), including Two New Taxa. *Systematic Botany* **34**, 285–296, <https://doi.org/10.1600/036364409788606361> (2009).
56. de la Estrella, M., Wieringa, J. J., Breteler, F. J. & Ojeda, D. I. Re-evaluation of the genus *Englerodendron* (Leguminosae–Detarioideae), including *Isomacrolobium* and *Pseudomacrolobium*. *Australian Systematic Botany* **32**, 564–571, <https://doi.org/10.1071/SB18075> (2019).
57. Jongkind, C. C. H. & Lemmene, R. H. M. J. *The Connaraceae: A Taxonomic Study With Emphasis On Africa.* (Wageningen University and Research 1989).
58. Kanga, S. M., Sonké, B. & Couvreur, T. L. P. *Raphia vinifera* (Arecaceae; Calamoideae): Misidentified for far too long. *Biodiversity Data Journal* **7**, e37757, <https://doi.org/10.3897/BDJ.7.e37757> (2019).
59. Lachenaud, O. & Onana, J.-M. The West and Central African species of *Vepris* Comm. ex A.Juss. (Rutaceae) with simple or unifoliolate leaves, including two new combinations. *Adansonia* **43**, 107–116, <https://doi.org/10.5252/adansonia2021v43a10> (2021).
60. Radcliffe-Smith, A. Notes on African Euphorbiaceae: XI: *Margaritaria discoidea*: A Re-Appraisal. *Kew Bulletin* **36**, 219–221 (1981).

61. Roalson, E. H. & Hall, J. C. New Generic Concepts for African Cleomaceae. *Systematic Botany* **42**, 925–942, <https://doi.org/10.1600/036364417X696393> (2017).
62. Roux, J. P. *Synopsis Of The Lycopodiophyta And Pteridophyta Of Africa, Madagascar And Neighbouring Islands*. (South African National Biodiversity Institute 2009).
63. Schnell, R. Contribution à l'étude botanique de la chaîne de Fon (Guinée). *Bulletin du Jardin botanique de l'État a Bruxelles* **31**, 15–54 (1961).
64. Szlachetko, D. L. & Kowalkowska, A. Contributions to the Orchid Flora of Guinea, West Africa. (Polish Academy of Sciences, W. Szafer Institute of Botany, 2007).
65. Verdcourt, B. Studies in the Leguminosae-Papilionoideae for the 'Flora of Tropical East Africa': V. *Kew Bulletin* **25**, 65–169 (1971).
66. Cheek, M. *et al.* Addressing the *Vepris verdoorniana* complex (Rutaceae) in West Africa, with two new species. *Kew Bull.* **74**, 53, <https://doi.org/10.1007/S12225-019-9837-Y> (2019).
67. Berg, C. C. *Ficus laurifolia* (Moraceae) finally in position. *Blumea* **56**, 159–160, <https://doi.org/10.3767/000651911X592119> (2011).
68. Borg, D. *et al.* Phylogeny of two African genera of Sapotaceae – Englerophytum and Synsepalum *Edinburgh Journal of Botany* 1–37 <https://doi.org/10.1017/S0960428619000040> (2019).
69. Clayton, J., Fernando, E., Soltis, P. & Soltis, D. Molecular Phylogeny of the Tree-of-Heaven Family (Simaroubaceae) Based on Chloroplast and Nuclear Markers. *International Journal of Plant Sciences* **168**, 1325–1339, <https://doi.org/10.1086/521796> (2007).
70. Gardner, E. M. *et al.* Repeated parallel losses of inflexed stamens in Moraceae: Phylogenomics and generic revision of the tribe Moreae and the reinstatement of the tribe Olmedieae (Moraceae). *Taxon*, **70**, 946–988. <https://doi.org/10.1002/tax.12526>
71. Guo, X. *et al.* Cutting up the climbers: Evidence for extensive polyphyly in Friesodielsia (Annonaceae) necessitates generic realignment across the tribe Uvarieae. *Taxon* **66**, 3–19, <https://doi.org/10.12705/661.1> (2017).
72. Hong-Wa, C. & Besnard, G. Intricate patterns of phylogenetic relationships in the olive family as inferred from multi-locus plastid and nuclear DNA sequence analyses: A close-up on Chionanthus and Noronhia (Oleaceae). *Molecular Phylogenetics and Evolution* **67**, 367–378, <https://doi.org/10.1016/j.ympev.2013.02.003> (2013).
73. Veranso-Libalah, M. C., Stone, R. D., Fongod, A. G. N., Couvreur, T. L. P. & Kadereit, G. Phylogeny and systematics of African Melastomataceae (Melastomataceae). *Taxon* **66**, 584–614, <https://doi.org/10.12705/663.5> (2017).
74. Wells, T. *et al.* Combination of Sanger and target-enrichment markers supports revised generic delimitation in the problematic 'Urera clade' of the nettle family (Urticaceae). *Molecular Phylogenetics and Evolution* **158**, 107008, <https://doi.org/10.1016/j.ympev.2020.107008> (2021).
75. Zhang, Q. Phylogeny, biogeography, and breeding system evolution in Moraceae. **194**. <https://theses.hal.science/tel-02268575/document>
76. Buchwalder, K., Samain, M.-S., Sankowsky, G., Neinhuis, C. & Wanke, S. Nomenclatural updates of Aristolochia subgenus Pararistolochia (Aristolochiaceae). *Australian Systematic Botany* **27**, 48, <https://doi.org/10.1071/SB13042> (2014).
77. Cribb, P. & Carlswald, B. New combinations in Aerangis, Diaphanthe and Podangis (Orchidaceae, subtribe Angraecinae). *Phytotaxa* **71**, 42, <https://doi.org/10.11646/phytotaxa.71.1.8> (2012).
78. Filho, M. D. M. V., Maia, V. H., de Freitas Mansano, V. & da Costa, A. F. Hijmania, a replacement name for Maria (Moraceae). *Phytotaxa* **247**, 97–98, <https://doi.org/10.11646/phytotaxa.247.1.8> (2016).
79. Larridon, I., Goetghebeur, P. & Roalson, E. H. New combinations and a new name for including Nemum species in Bulbostylis (Abildgaardieae: Cyperaceae). *Phytotaxa* **418**, 112–114, <https://doi.org/10.11646/phytotaxa.420.4.5> (2019).
80. Paton, A. J. *et al.* Nomenclatural changes in Coleus and Plectranthus (Lamiaceae): a tale of more than two genera. *PhytoKeys* **129**, 1–158, <https://doi.org/10.3897/phytokeys.129.34988> (2019).
81. Wood, J. R. I. & Scotland, R. W. Misapplied names, synonyms and new species of Ipomoea (Convolvulaceae) from South America. *Kew Bull* **72**, 9, <https://doi.org/10.1007/S12225-017-9680-Y> (2017).
82. Gledhill, D. G. F. Scott-Elliot and His Plant Localities. *Taxon* **18**, 425–428 (1969).
83. Symoens, J.-J., Wiland-Szymańska, J. & Lejoly, J. Stanislaw Lisowski (Vilnius, 11 février 1924 - Poznań, 2 mai 2002). *Systematics and Geography of Plants* **74**, 9–16 (2004).
84. Cable, S. & Cheek, M. *The Plants of Mt Cameroon, a Conservation Checklist*. (Royal Botanic Gardens, Kew, 1998).
85. Cheek, M., Harvey, Y.B., Onana, J.-M. *The Plants of Dom. Bamenda Highlands, Cameroon: A Conservation Checklist* (Royal Botanic Gardens, Kew, 2010).
86. Cheek, M., Harvey, Y., Onana, J.-M. *The Plants of Mefou Proposed National Park. Yaoundé, Cameroon: A Conservation Checklist*. (Royal Botanic Gardens, Kew, 2011).
87. Cheek, M., Onana, J.-M., Pollard, B.J. *The Plants of Mount Oku and the Ijim Ridge, Cameroon, a Conservation Checklist*. (Royal Botanic Gardens, Kew, 2000).
88. Cheek, M., Pollard, B. J., Darbyshire, I., Onana, J. M. & Wild, C. *The Plants of Kupe, Mwanenguba and the Bakossi Mts, Cameroon. A Conservation Checklist*. (Royal Botanic Gardens, Kew, 2004).
89. Harvey, Y. B., Pollard, B. J., Darbyshire, I., Onana, J.-M., Cheek, M. *The Plants of Bali Ngemba Forest Reserve, Cameroon: A Conservation Checklist*. (Royal Botanic Gardens, Kew, 2004).
90. Harvey, Y.B., Tchiengue, B., Cheek, M. *The Plants of the Lebialem Highlands, a Conservation Checklist*. (Royal Botanic Gardens, Kew, 2010).
91. van der Burgt, X. M., Haba, P. M., Magassouba, S. & Veranso-Libalah, M. C. *Benna alternifolia* (Melastomataceae: Sonerileae), a new herbaceous genus and species from Guinea, West Africa. *Willdenowia* **52**, 25–37, <https://doi.org/10.3372/wi.52.52102> (2022).
92. Tadesse, M. An account of *Bidens* (Compositae: Heliantheae) for Africa. *Kew Bull.* **48**, 437–516 (1993).
93. Descoings, B. Vitacées Africaines Nouvelles. *Bull. Soc. Bot. de France*. **114**, 349–356 (1968).
94. Phillips, S. M. & Mesterházy, A. Revision of small ephemeral species of Eriocaulon (Eriocaulaceae) in West Africa with long involucre bracts. *Kew Bull.* **70**, 1–17, <https://doi.org/10.1007/S12225-014-9557-2> (2015).
95. Williams, E. & Cheek, M. *Gladiolus chevalierianus*. The IUCN Red List of Threatened Species **2019**: e.T116135940A116135943. <https://doi.org/10.2305/IUCN.UK.2019-2.RLTS.T116135940A116135943.en>. Accessed on 04 November (2022).
96. Van Der Burgt, X. M., Konomou, G., Haba, P. M. & Magassouba, S. *Gladiolus mariae* (Iridaceae), a new species from fire-free shrubland in the Kounounkan Massif, Guinea. *Willdenowia* **49**, 117–126, <https://doi.org/10.3372/wi.49.49112> (2019).
97. Cheek, M., Molmou, D., Jennings, L., Magassouba, S. & van der Burgt, X. *Inversodicraea koukoutamba* and *I. tassing* (Podostemaceae), new waterfall species from Guinea, West Africa. *Blumea* **64**, 216–224, <https://doi.org/10.3767/blumea.2019.64.03.03> (2019).
98. Cheek, M. & Haba, P. *Inversodicraea* Engl. resurrected and *I. pepehabei* sp. nov. (Podostemaceae), a submontane forest species from the Republic of Guinea. *Kew Bull.* **71**, 1–8, <https://doi.org/10.1007/S12225-016-9673-2> (2016).
99. Cheek, M. *et al.* A key to the species of *Keetia* (Rubiaceae-Vanguerieae) in West Africa, with three new, threatened species from Guinea and Ivory Coast. *Kew Bull.* **73**, 1–15 (2018).
100. Cheek, M. *et al.* *Kindia* (Pavetteae, Rubiaceae), a new cliff-dwelling genus with chemically profiled colleter exudate from Mt Gangan, Republic of Guinea. *PeerJ* **6**, e4666, <https://doi.org/10.7717/peerj.4666> (2018).
101. Phillips, S. M., Fofana, F. & Cheek, M. *Mesanthemum tuberosum* Lecomte resurrected from *M. prescottianum* (Bong.) Körn. (Eriocaulaceae), variation and lectotypification. *Kew Bull.* **73**, 1–8, <https://doi.org/10.1007/S12225-018-9744-7> (2018).
102. Cheek, M., Molmou, D., Magassouba, S. & Ghogue, J. P. Taxonomic revision of *Saxicolella* (Podostemaceae), African waterfall plants highly threatened by Hydro-Electric projects. *Kew Bull.* **77**, 403–433, <https://doi.org/10.1007/S12225-022-10019-2> (2022).

103. van der Burgt, X. M. *et al.* *Talbotiella cheekii* (Leguminosae: Detarioideae), a new tree species from Guinea. *Kew Bull.* **73**, 1–8, <https://doi.org/10.1007/S12225-018-9755-4> (2018).
104. Xanthos, M., Konomou, G., Haba, P. M. & van der Burgt, X. M. *Trichantheum tenerium* (Poaceae: Panicoideae), a new species from Guinea-Conakry. *Kew Bull.* **75**, 1–7, <https://doi.org/10.1007/S12225-020-9864-8> (2020).
105. Angiosperm Phylogeny Group. *et al.* An update of the Angiosperm Phylogeny Group classification for the orders and families of flowering plants: APG IV. *Bot. J. Linn. Soc.* **181**, 1–20, <https://doi.org/10.1111/boj.12385> (2016).
106. Rosen, D. J. New species of *Eleocharis* subgen. *Limnochloa* (Cyperaceae) from the old and new world tropics. *Novon* **20**, 73–77, <https://doi.org/10.3417/2008028> (2010).
107. Jongkind, C. C. *Jasminum cuneatum* Jongkind (Oleaceae), a new species from Guinée, Liberia and Côte d'Ivoire. *Adansonia* **32**, 141–143, <https://doi.org/10.5252/a2010n1a9> (2010).
108. Koenen, E. J. & de Wilde, J. J. A taxonomic revision of the reinstated genus *Leplaea* and the newly recognized genus *Neoguarea* (Meliaceae, Sapindales): the exclusion of *Guarea* from Africa. *Plant Ecology and Evolution* **145**, 209–241, <https://doi.org/10.5091/plevevo.2012.656> (2012).
109. Jongkind, C. & de Winter, W. *Blotiella confusa* Jongkind & W. de Winter, sp. nov. (Dennstaedtiaceae), a new species from lowland tropical West Africa, and its distinction from *B. reducta* (C. Chr) RM Tryon. *Adansonia* **37**, 7–12, <https://doi.org/10.5252/a2015/n1a1> (2015).
110. Maas-van de Kamer, H., Maas, P. J. M., Wieringa, J. J. & Specht, C. D. Monograph of African Costaceae. *Blumea* **61**, 280–318, <https://doi.org/10.3767/000651916X694445> (2016).
111. Bauters, K., Goetghebeur, P., Asselman, P., Meganck, K. & Larridon, I. Molecular phylogenetic study of *Scleria* subgenus *Hypoporum* (Sclerieae, Cyperoidae, Cyperaceae) reveals several species new to science. *PLoS one* **13**, e0203478, <https://doi.org/10.1371/journal.pone.0203478> (2018).
112. Xu, K. W., Chen, C. W., KAMAU, P., Liao, W. B. & Zhang, L. B. Four new species of the fern genus *Hymenasplenium* (Aspleniaceae) from Africa and Asia. *Phytotaxa* **416**, 34–42, <https://doi.org/10.11646/phytotaxa.416.1.4> (2019).

Acknowledgements

This work was completed thanks to the continued support by Université Gamal Abdel Nasser de Conakry for Herbar National de Guinée. Work towards the checklist was partly funded through a grant from the Global Biodiversity Information Facility, Biodiversity Information for Development programme (reference number AF2015-0042-NAC) 'Towards a Red Data Book for Guinea' in collaboration with the Darwin Initiative-funded Tropical Important Plant Areas project (Darwin Project 23-002) and completed with support from Fondation Franklinia (2020-24). We thank all those involved in fieldwork in Guinea over the past 10 years who helped to gather data, notably Fatoumata Fofana Madé, Almamy Diallo, Natalie König, Oliver Hooper, Abdoulaye Baldé, Albert Guilavogui & Boubacar Sow; and Kew volunteers Margaret Joachim & Rosemary Lomer who georeferenced herbarium specimens for both projects. This work has been enabled by the Memorandum of Understanding between Royal Botanic Gardens, Kew, and Herbar National de Guinée since 2008.

Author contributions

G.G., C.C., I.D., M.C. conceived the dataset. G.G. developed the data structure, compiled the data and constructed the checklist, with contributions from all co-authors. G.G., E.N.L., M.C. wrote first drafts of sections of the Data Descriptor. N.C., T.S.D., S.M. georeferenced historic specimen data. E.B., X.v.d.B., N.C., C.C., I.D., T.S.D., P.e.H., P.i.H., C.J., G.K., I.L., S.M., D.M., T.S., M.C. collected new specimen data. G.G., E.B., X.v.d.B., D.C., G.C., C.C., T.L.P.C., L.-P.M.J.D., I.D., S.D., T.S.D., D.G., A.G., D.H., N.H., C.J., G.K., I.L., G.L., A.L., M.L., E.L., S.M., A.M., J.M.O., J.P., A.P., S.P., G.P., A.Q., S.R., T.S., B.S., A.S., A.R.G.S., M.S., T.S., R.D.S., T.U., P.W., M.X., E.N.L., M.C. contributed to the revision of the Checklist. All co-authors contributed to the revision of the Data Descriptor and approved the final ms.

Competing interests

The authors declare no competing interests.

Additional information

Supplementary information The online version contains supplementary material available at <https://doi.org/10.1038/s41597-023-02236-6>.

Correspondence and requests for materials should be addressed to G.G. or E.N.L.

Reprints and permissions information is available at www.nature.com/reprints.

Publisher's note Springer Nature remains neutral with regard to jurisdictional claims in published maps and institutional affiliations.



Open Access This article is licensed under a Creative Commons Attribution 4.0 International License, which permits use, sharing, adaptation, distribution and reproduction in any medium or format, as long as you give appropriate credit to the original author(s) and the source, provide a link to the Creative Commons license, and indicate if changes were made. The images or other third party material in this article are included in the article's Creative Commons license, unless indicated otherwise in a credit line to the material. If material is not included in the article's Creative Commons license and your intended use is not permitted by statutory regulation or exceeds the permitted use, you will need to obtain permission directly from the copyright holder. To view a copy of this license, visit <http://creativecommons.org/licenses/by/4.0/>.

© Crown 2023