

# A Three-Dimensional Computed Tomography Analysis of Craniofacial Asymmetry in Malaysian Infants with Cleft Lip and Palate

Nikki TZIAVARAS<sup>1</sup>, Suzanna MIHAILIDIS<sup>1</sup>, Zainul RAJION<sup>2</sup>, Asilah YUSOF<sup>2</sup>, Peter John ANDERSON<sup>1,2,3</sup>, Grant TOWNSEND<sup>1</sup>

Submitted: 26 Nov 2009  
Accepted: 28 May 2010

<sup>1</sup> Craniofacial Biology Research Group, School of Dentistry, University of Adelaide, South Australia 5005, Australia

<sup>2</sup> School of Dental Sciences, Universiti Sains Malaysia Health Campus, 16150 Kubang Kerian, Kelantan, Malaysia

<sup>3</sup> The Australian Craniofacial Unit, Adelaide Women's and Children's Hospital, South Australia 5005, Australia

## Abstract

**Background:** The application of three-dimensional computed tomography (3D CT) to analyse craniofacial morphology in individuals with cleft lip and palate (CLP) enables detailed assessments to be made of asymmetry in the region of the cleft and in regions distant from the cleft. The aim of this study was to compare craniofacial morphology in a sample of Malaysian infants with unoperated CLP with a control sample of unaffected Malaysian infants.

**Methods:** The study sample comprised 29 individuals: 10 with unilateral CLP (UCLP), 5 with bilateral CLP (BCLP), 7 with cleft lip and primary palate (CLPP), and 7 with isolated cleft palate (ICP). The control sample consisted of 12 non-cleft (NC) infants. All subjects were between 0.4 and 12.2 months of age. Nine mid-facial and 4 nasal bone landmarks were located on 3D CT scans and compared to a midline reference plane, which was created using the landmarks basion, sella, and nasion. Unpaired *t* tests and *F* tests were used to compare means and variances between sample groups, whereas paired *t* tests were used for comparisons within the UCLP and NC groups.

**Results:** Differences in variances of some mid-facial breadths and nasal bone dimensions were found in both male and female cleft groups when compared to the NC sample. In the UCLP group, some nasal bone and facial breadth dimensions were larger than in the NC sample and the nasal bone tended to deviate to the contralateral side of the cleft.

**Conclusion:** CLP affects the size and orientation of the nasal bones and is associated with an altered morphology of some facial bones at positions distant from the region of the cleft.

**Keywords:** cleft lip, cleft palate, facial asymmetry, infant, radiology, three-dimensional imaging, tomography

## Introduction

Patients with orofacial clefts present with a variety of problems including dental anomalies, malocclusions, disorders of speech and hearing, and secondary facial deformities (1,2). Non-syndromic cleft lip, with or without cleft palate, is relatively common. It demonstrates a prevalence that ranges from 0.04 to 0.79 per 1000 live births (3) and 1 in every 500 to 550 live births, with the highest rates observed among the Asians (4). Although functional or iatrogenic factors are generally thought to affect normal facial morphology and growth potential (5,6), it is understood that there is an underlying genetic basis for the formation of clefts (7). Specifically, the *MSX1* gene has been associated with cleft

palate, and the *MSX1* and *TGFβ3* genes have been associated with cleft lip, with or without cleft palate (7,8). Conversely, other researchers have found little evidence supporting these findings (9). Changes in facial growth and development in cleft children likely reflect the combined effect of genes and the environment; that is, clefts result from multifactorial influences that affect the growth potential of the face and the overall symmetry of the soft tissues and facial bones (5). Regardless of the pathogenesis or genetics, anomalous developmental conditions, such as cleft lip and palate (CLP), are often associated with increased levels of asymmetry, which have been described as fluctuating or directional asymmetry (10). Fluctuating asymmetry refers to small, random differences in size between sides

of the body, for example the face, and is thought to reflect developmental instability, whereas directional asymmetry involves a consistent trend in which one side is larger or smaller than the other and may be influenced by homeobox genes (10–12). The assessment of facial asymmetry is an important component of evaluating the success of surgical repair in CLP and is linked to psychological issues such as perceptions of attractiveness and intelligence (13). Therefore, the present study included an assessment of asymmetry by comparing landmark measurements from the left and right sides of the face.

Methodologically, cephalometric and panoramic radiographs have traditionally served as the primary option for the radiographic analysis of craniofacial morphology. However, there are limitations in the measurement of asymmetry using two-dimensional (2D) radiographs, such as the super-imposition of structures and the reliance on machine positioning relative to the external auditory meati, which can be asymmetric within individuals (14). Hence, three dimensional (3D) imaging techniques have been developed to overcome the shortcomings of conventional 2D methods and were applied in the present study; specifically, 3D computed tomography (CT) was used. Other available 3D imaging techniques include morphoanalysis, laser scanning, stereolithography, 3D ultrasonography, 3D facial morphometry, digigraph imaging, Moiré topography, and contour photography (1). Data obtained with 3D CT scanning can be used for soft and hard tissues analysis, whereas methods based on laser techniques are used mainly for the analysis of soft tissue surfaces. Consequently, 3D CT scanning was deemed most suitable for data collection in our study.

The overall aim of this study was to compare the craniofacial morphologies in a sample of unoperated Malaysian infants with CLP with those in a sample of age-matched, unaffected, non-cleft (NC) Malaysian infants. Differences in morphologies of the nasal bones were emphasised. A midline plane constructed from the landmarks basion (ba), sella (s), and nasion (n) was used to assess asymmetry in the selected craniofacial variables in both the CLP and the NC groups.

## Materials and Methods

The Malaysian patient database established at the Australian Craniofacial Unit (ACFU), Adelaide Women's and Children's Hospital, provided the 3D CT scans of the subjects. The

Malaysian cleft sample comprised 29 randomly selected individuals (12 females, 17 males): 10 with unilateral CLP (UCLP), 5 with bilateral CLP (BCLP), 7 with cleft lip and primary palate (CLPP), and 7 with isolated cleft palate (ICP). The control (NC) sample consisted of 12 Malaysian infants (4 females, 8 males) with no craniofacial abnormalities. Ideally, CT scans obtained from normal individuals would provide the ideal control group; however, the radiation dose involved in acquiring CT scans of healthy individuals cannot be justified. There should be sufficient medical and diagnostic reasons for performing a CT investigation. Hence, the NC subjects in the present study were patients with medical conditions that were sufficiently significant to justify the performance of CT scans (for example, meningitis and mild hydrocephalus). However, these conditions did not cause abnormalities in craniofacial growth and morphology (15), as confirmed by preliminary comparisons of the cranial base and facial dimensions of individuals with mild hydrocephalus and of other controls, which revealed estimates within the normal measurement range. All individuals included in the study were of Malay ethnicity. The age of the cleft patients ranged 1.1–12.2 months with a mean of 3.8 (SD 2.5) months, whereas the age for the NC group ranged 0.4–11.9 months with a mean of 4.8 (SD 2.8) months. Ethical approval was obtained from the Adelaide Women's and Children's Hospital Research Ethics Committee.

The Persona software package developed at the ACFU was utilised for 3D reconstruction of the craniofacial images and determination of the 3D coordinates of osseous landmarks on a silicon graphics computer workstation. This package enables the display of the CT scan data simultaneously around a 3D marker in windows showing axial, sagittal, and coronal sections, and it provides an accurate 3D reconstruction of the external craniofacial bones and the cranial base. The Persona software package enables the 3D positions of landmarks to be located with high precision, which allows the automatic generation of slices through selected points. The thickness of the scan data slices can vary 1.25–2.00 mm. Preliminary analyses using 68 landmark comparisons (61 distances, 7 angles) indicated the presence of random measurement errors ranging 0.2–1.1 mm for distances between landmarks, whereas the random errors for angular variables ranged 1.0°–2.7° (15). In general, the measurement errors were considered relatively small and unlikely to bias the results.

In the present study, 13 osseous landmarks were located on the mid-facial region of subjects due to their close proximity to the clefts (Table 1, Figure 1) (16,17). A midline reference plane was created using the following landmarks: ba, s, and n (Figure 2). Breadth variables were then estimated by measuring the distances from mid-face osseous landmarks to the midline reference plane, whereas nasal bone dimensions were estimated by measuring the distances and angles between nasal osseous landmarks (Figure 3).

The influence of gender was investigated by comparing variables between male and female subjects in both cleft and NC samples. To explore the presence of any association between the side of the cleft and the direction of nasal bone deviations, the UCLP and NC samples were compared as follows: bilateral variables that coincided with the location of the cleft were measured, and asymmetry was assessed by subtracting the ipsilateral from the contralateral measurements.

The data were screened and subsequently corrected for outliers when necessary. Double determinations were performed to assess the magnitude of any systematic or random errors, and Dahlberg statistics were calculated for each variable (18).

Although the 2 groups were as closely matched for age as possible, the age range in the cleft group was slightly greater than that in the NC group. Additional age adjustments were applied to the data following the regression analyses of each variable against age in both the cleft and NC samples. Hence, all of the presented data are age-adjusted.

Comparison of the mean values and variances between male and female cleft and NC groups were performed using unpaired t tests and F tests with a significance level of  $P < 0.05$ . Comparisons between measurements on right and left sides of the face within the UCLP group and within the NC sample were conducted using paired t tests. The R (R Foundation for Statistical Computing, Vienna, AT) and Excel (Microsoft Corporation, Redmond, WA, US) statistical programmes were used to analyse the collected data.

## Results

### *Male cleft and NC samples*

Table 2 shows selected landmark distances which revealed the greatest differences in mean values between male cleft and NC samples. Cleft males exhibited greater distances from mid-face

landmarks (snml, orl, gol, ztl, ztr, and ofl) to the midline reference plane (na-s-ba) and greater breadth distances (ofl-ofr, gol-gor, and ztl-ztr) than did NC males but none of these differences in mean values was significant statistically. However, 5 of the variables (gol, ztl, ztr, gol-gor, and ztl-ztr) displayed significantly unequal variances ( $P < 0.05$ ), with variances in NC males exceeding those in cleft males.

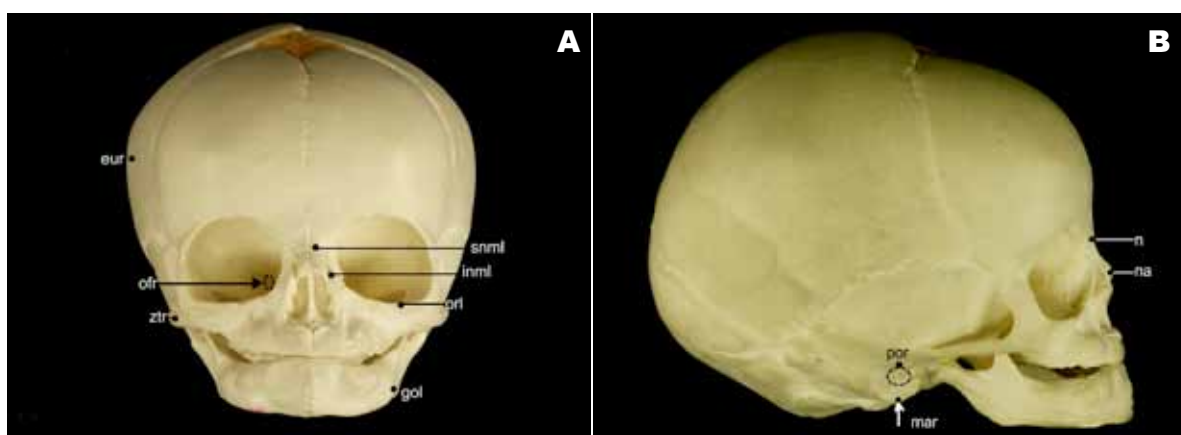
### *Female cleft and NC samples*

Table 3 presents selected landmark distances and angles which showed the greatest differences in mean values between female cleft and NC samples. All variables were larger in the female cleft group than the NC group, including the distances from mid-face landmarks to the midline plane (inmr, eul, gor, mal, pol, and ztr) and the mid-facial breadths (mal-mar). Dimensions of the nasal bone that showed the largest differences between the female cleft group compared with the NC group were na-n and inmr. Angulations depicted by the variables snml-n-snmr and inml-na-inmr were also larger in the female cleft group compared with the NC group. None of these differences in mean values was significant statistically, although the difference in mean values for inmr to the midline plane and snml-n-snmr both reached borderline significance ( $P = 0.05$ ). Five of the variables (eul, mal, ztr, mal-mar, and n-na plane) showed significant heterogeneity in their variances ( $P < 0.05$  each), with variances in NC females exceeding those in cleft females for all variables except n-na plane. . The nasal bone in the female cleft group showed a significant deviation to the right compared with the NC sample ( $P < 0.05$ ) and this angle also showed significantly greater variability in the cleft group compared with the NC group ( $P < 0.05$ ).

### *UCLP and NC samples*

Comparison of the UCLP and NC samples (prior to consideration of the cleft location) revealed several statistically significant differences in mean landmark distances, as reported in Table 4. All nasal bone dimensions were larger in the UCLP group than the NC group, with significant differences in dimensions na-n, snmr-n, and snml-snmr ( $P < 0.05$  each). Facial breadth distances were also larger in the UCLP group than the NC group, with significant differences in dimensions orl-orr and ztl-ztr ( $P < 0.05$  each).

Table 5 presents the bilateral variables that were associated with significant differences



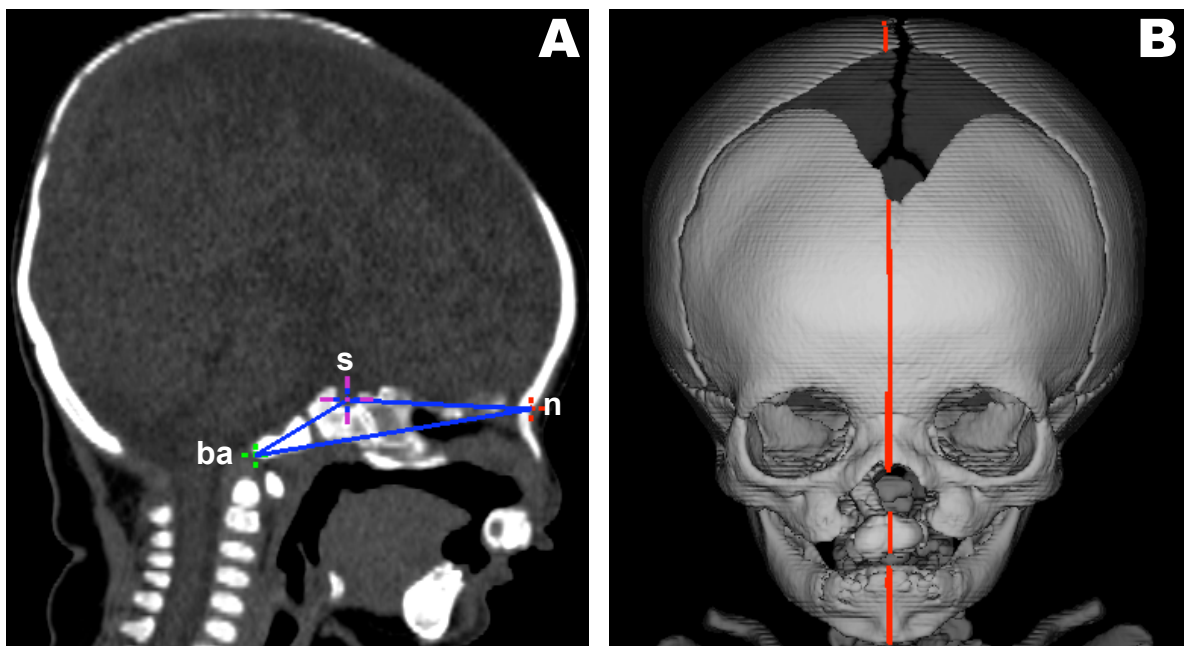
**Figure 1:** (A) Frontal and (B) right lateral views of a skull depicting osseous landmarks described in Table 1 (excluding sella and basion)

**Table 1:** Description of the 13 osseous landmarks identified on three-dimensional computed tomography scans (16,17)

Landmark	Abbreviation	Definition
Nasale	na	Tip of the nasal bone
Superior naso-maxillare l/r	snml/snmr	Most superior point on the naso-maxillary suture
Inferior naso-maxillare l/r	inml/inmr	Most inferior point on the naso-maxillary suture
Nasion	n	Most anterior point on the fronto-nasal suture (when the suture was not clearly identifiable, the deepest point on the nasal notch was substituted)
Sella	s	Centre of the sella turcica
Basion	ba	Mid-sagittal point on the anterior margin of the foramen magnum (at the saddle point)
Gonion l/r	gol/gor	Point on the angle of the mandible located by bisection of the angle formed by the mandibular line and the ramus line
Orbitale l/r	orl/orr	Most inferior point on the infraorbital margin
Zygo-temporale l/r	ztl/ztr	Mid-point of the bony concavity formed between the frontal and temporal processes of the zygomatic bone
Optic foramen l/r	ofl/ofr	Centre of the anterior opening of the optic canal
Porion l/r	pol/por	Most superior point on the margin of the external auditory meatus
Mastoidale l/r	mal/mar	Most inferior point on the mastoid process
Euryon l/r	eul/eur	Most lateral point on the skull

Letters l and r denote left and right, respectively.



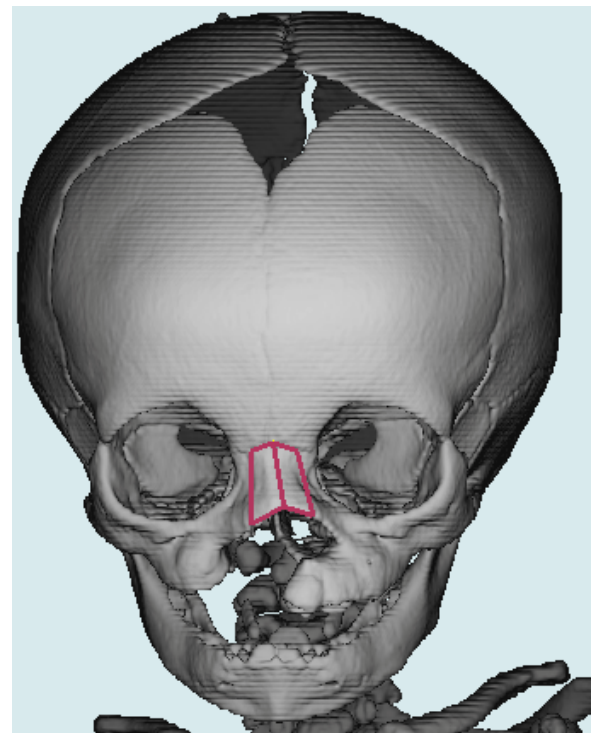


**Figure 2:** Computed tomography images of the reference plane constructed from 3 osseous landmarks: nasion (n), sella (s), and basion (ba). (A) Sagittal view of “wire frame” constructed midline reference plane. (B) Frontal view of reference plane bisecting a BCLP patient.

between right and left sides of the face when the location of the cleft was considered. To determine cleft-side (ipsilateral) to non-cleft-side (contralateral) dimensional differences, measurements for the ipsilateral side of the cleft were subtracted from those obtained for the contralateral side of the cleft. The results showed that the distances from the ipsilateral zt and the contralateral zt to the midline reference plane were significantly different ( $P < 0.05$ ), with a larger distance measured on the contralateral side of the cleft. Additionally, a significant degree of deviation ( $P < 0.001$ ) was observed for the nasal bone variable na–n, which deviated away from the cleft side. In the NC sample, no significant differences were detected between the left and right sides of the face.

## Discussion

Despite several growth theories (19), our understanding of the cellular and molecular control mechanisms involved in human craniofacial development remains incomplete. It is believed that during the course of normal craniofacial development, the histogenesis and functional maturity of muscles, nerves, and vessels may influence one another (19). Abnormal craniofacial development, such as clefting, is also likely to influence the growth and development



**Figure 3:** Frontal view of three-dimensional computed tomography image of nasal bone “wire frame”.

**Table 2:** Descriptive statistics for selected variables in male non-cleft (NC) and cleft groups

	Males NC (n = 8)			Males Cleft (n = 17)			P value
	Mean (mm)	SEM	SD	Mean (mm)	SEM	SD	
<b>Distance from landmark to midline plane, na-s-ba (mm)</b>							
Snml (nasal bone)	- 3.64	0.33	0.93	- 4.52	0.28	1.15	NS
Orl	- 16.81	0.64	1.81	- 18.01	0.37	1.53	NS
Gol	- 26.59	1.37	3.87	- 28.52	0.56	2.31	0.04*
Ztl	- 37.15	1.72	4.86	- 39.32	0.63	2.60	0.02*
Ztr	37.44	1.77	5.01	39.47	0.64	2.64	0.02*
Ofl	- 7.90	0.42	1.19	- 8.77	0.23	0.95	NS
<b>Breadth distance (mm)</b>							
Ofl-ofr	16.05	0.72	2.04	17.24	0.43	1.77	NS
Gol-gor	53.05	2.51	7.10	56.58	0.97	4.00	0.03*
Ztl-ztr	74.64	3.49	9.87	78.94	1.24	5.11	0.01*

Positive mean values indicate the right side of the skull, while negative mean values indicate the left side of the skull. \* $P < 0.05$  indicates significant difference and NS indicates non-significant difference ( $P > 0.05$ ) in variances between NC and cleft groups by *F* test.

Abbreviations: gol = gonion left, gor = gonion right, ofl = optic foramen left, ofr = optic foramen right, orl = orbitale left, snml = superior naso-maxillare left, ztl = zygo-temporale left, ztr = zygo-temporale right.

of adjacent facial and dental structures, which can result in noticeable alterations in facial shape and symmetry. By comparing landmark variables between cleft and NC individuals by gender, it was possible to explore the dimensional impact of clefting on the adjacent facial structures and to assess whether clefting affects males and females differently. Hence, our findings provide information that is important for practising dentists, who play an important role within the multidisciplinary team of health professionals that manage cleft patients.

Earlier research on sex differences in CLP has demonstrated little variation in the craniofacial morphology of infants (20) or children aged 6 to 10 years (21,22). Our study demonstrated that mean measurements tended to be larger in the cleft sample than the NC sample, for both males and females. There were also some variables that showed significant heterogeneity in variances between cleft and NC samples for both sexes. Mid-facial breadths in the combined cleft sample revealed that an orofacial cleft may influence facial growth away from the immediate cleft location and contribute to asymmetry. Asymmetry in cleft patients has been reported in the orbital, maxillary and nasal regions (23). Similar results

were obtained in the present study; the left optic foramen and orbitale in the male sample tended to be further from the midline compared with the contralateral side. There was also some evidence that the zygoma bone in the mid-face region may be affected, which indicates a possible direct influence of the cleft on horizontal mid-facial breadths in comparison with unaffected individuals. We found that regardless of the cleft type, the mandible showed some tendency to be larger in the cleft sample compared with the NC sample, which differs from previous research (24). In general, clefts can influence facial growth away from the immediate cleft location, and these changes in facial morphology may subsequently influence oral function and alignment and growth of the dentition.

Very few studies have reported on the size and orientation of the nasal bones in CLP patients using either radiographs (25) or 3D CT (26), and to our knowledge, no studies have provided results concerning asymmetry. We found that males with clefts tended to show larger superior portions of the left nasal bone and greater left mid-facial breadths compared with the NC group, which suggested potentially left-dominant facial growth. In females, clefts had a somewhat

different effect on nasal bone morphology, which tended to be larger superiorly and deviated to the right with a flatter and longer shape. This morphology suggested a possible effect of the cleft on the prominence of the nasal bridge. Results reported in the literature investigating nasal bone morphology range from reports of considerably shorter nasal bones in subjects with cleft lip compared with subjects with cleft palate (25), to longer nasal bones in cleft patients from 6 years of age through to adulthood compared with non-cleft individuals (26). A combination of the cleft location together with normal lateral growth of the frontal bone and maxilla may explain the increase in nasal bone angulation observed superiorly. It is possible that the inferior dimensions of the nasal bone are less affected by CLP because they form the superior portion of the nasal cavity and are therefore influenced to a lesser degree by the surrounding craniofacial bones. Furthermore,

the facial muscles may affect the growth and deviation of facial bones, including the nasal bones (19). It is important to bear in mind that there are differences in craniofacial morphology among ethnic groups and caution is needed in extrapolating findings from one population to another. Nevertheless, head breadth dimensions in Malaysian infants in the 0–1 age group are similar to those reported for Caucasians (15).

Analysis of the UCLP group showed that severe clefts together with dominant lateral growth of the skull resulted in a number of significant differences between the UCLP and the NC groups. These findings are supported by previous research with respect to transverse asymmetry in individuals with UCLP (27,28,29). Nasal bone lengths in UCLP tended to be longer in both vertical and horizontal dimensions compared with the NC group. This result is supported by evidence showing that UCLP individuals have

**Table 3:** Descriptive statistics for selected variables in female non-cleft (NC) and cleft groups

	Females NC (n = 4)			Females Cleft (n = 12)			P value
	Mean (mm/°)	SEM	SD	Mean (mm/°)	SEM	SD	
<b>Distance from landmark to midline plane, na--s--ba (mm)</b>							
Inmr (nasal bone)	4.58	0.42	0.84	5.86	0.37	1.28	NS
Eur	- 51.43	4.57	9.14	- 54.66	1.31	4.54	0.04*
Gor	24.30	1.81	3.62	25.86	0.66	2.29	NS
Mal	- 30.18	3.57	7.14	- 32.40	0.84	2.91	0.01*
Pol	- 31.35	2.42	4.84	- 33.24	0.82	2.84	NS
Ztr	34.20	2.87	5.74	36.47	0.81	2.81	0.03*
<b>Breadth distance (mm)</b>							
Mal--mar	59.83	6.46	12.92	63.42	1.60	5.54	0.02*
<b>Nasal bone distance (mm)</b>							
Na-n	10.03	1.46	2.92	11.41	0.47	1.63	NS
<b>Angle (°)</b>							
Snml-n-snmr	123.03	5.86	11.36	140.50	4.50	15.59	NS
Inml-na-inmr	107.10	7.39	14.78	120.58	2.58	9.80	NS
<b>Nasal bone deviation (°)</b>							
n-na plane	- 4.00	0.65	1.30	2.00	1.52	5.27	<0.001**

Positive mean values indicate the right side of the skull, while negative mean values indicate the left side of the skull. \* $P < 0.05$  indicates significant difference, \*\* $P < 0.001$  indicates highly significant difference, and NS indicates non-significant difference ( $P > 0.05$ ) in variances between NC and cleft groups by  $F$  test.

Abbreviations: eul = euryon left, gol = gonion left, gor = gonion right, inml = inferior naso-maxillare left, inmr = inferior naso-maxillare right, mal = mastoidale left, mar = mastoidale right, n = nasion, na = nasale, pol = porion left, snml = superior naso-maxillare left, snmr = superior naso-maxillare right, ztr = zygo-temporale right.

a high frequency of disproportionately wide noses in relation to the nose height both pre- and post-surgical treatment (30), whereas other researchers have documented that children with UCLP have significant nasal asymmetry that persists after primary surgery (13). In the present study, a significant degree of nasal bone deviation away from the cleft was detected in the UCLP group.

The 3D CT technology employed in this study provides more accurate and reliable measurements

compared with earlier methodologies that utilise coronal cephalometric or panoramic radiographs. These methods are limited due to super-imposition; for example, landmarks that are positioned more posteriorly, such as s and ba, may be difficult to locate due to overlap with more anteriorly positioned anatomical structures. Furthermore, cephalometric results rely on positioning the radiographic unit relative to the external auditory meati, which can exhibit intra- and inter-individual variations. Although there

**Table 4:** Descriptive statistics for nasal bone and facial breadth dimensions in cleft lip and palate (UCLP), without considering the side of the cleft, and non-cleft (NC) control groups

	UCLP (n = 10)			NC (n = 12)			P value
	Mean (mm)	SEM	SD	Mean (mm)	SEM	SD	
<b>Nasal bone distance (mm)</b>							
Na--n	12.58	0.44	1.39	10.66	0.58	2.01	0.02*
Inml--snml	13.43	0.51	1.61	11.70	0.61	2.11	NS
Inmr--snmr	13.27	0.50	1.58	11.90	0.57	1.97	NS
Snml--n	5.52	0.46	1.45	4.48	0.38	1.32	NS
Snmr--n	5.61	0.48	1.52	4.33	0.33	1.14	0.03*
Snml--snmr	10.50	0.91	2.88	7.79	0.62	2.15	0.02*
<b>Breadth distance (mm)</b>							
Orl-orr	36.72	1.24	3.92	33.28	0.94	3.26	0.04*
Gol-gor	57.11	1.40	4.43	52.09	2.11	7.31	NS
Mal-mar	68.85	1.28	4.05	63.93	3.19	11.05	NS
Ztl-ztr	80.49	1.60	5.06	72.87	3.01	10.43	0.04*

\*P < 0.05 indicates significant difference and NS indicates non-significant difference (P > 0.05) in mean values between NC and UCLP groups by unpaired t test.

Abbreviations: gol = gonion left, gor = gonion right, inml = inferior naso-maxillare left, inmr = inferior naso-maxillare right, mal = mastoidale left, mar = mastoidale right, n = nasion, na = nasale, orl = orbitale left, orr = orbitale right, snml = superior naso-maxillare left, snmr = superior naso-maxillare right, ztl = zygo-temporale left, ztr = zygo-temporale right.

**Table 5:** Mean distances that demonstrated statistically significant differences between ipsilateral and contralateral sides in the UCLP group (n = 10)

	Mean (mm)	SEM	SD	P value
<b>Nasal bone distance (mm)</b>				
Na-n	-7.97	0.88	2.78	<0.001*
<b>Mid-facelandmark distances (mm)</b>				
Zt-zt	0.72	0.31	0.98	0.045*

Positive mean value indicates the ipsilateral side of the cleft, while negative mean value indicates the contralateral side of the cleft. \* P < 0.05 indicates significant difference and \*\*P < 0.001 indicates highly significant difference in mean values between ipsilateral and contralateral sides in the UCLP group by paired t test.

Abbreviations: n = nasion, na = nasale, zt = zygo-temporale.



are advantages in using the 3D CT methodology, technological advances lead to the loss of some comparability between studies with software updates, e.g., differences in the definitions and identification of landmarks between different software programs.

A relatively small sample size and pooling of the different types of clefts for some of the analyses present further limitations to the present study. However, considering the difficulties involved in obtaining samples from unoperated CLP patients for whom CT scans are available, we think that the sample size is acceptable. It is expected that infants with an isolated cleft palate ( $n = 7$ ) are more likely to demonstrate facial morphologies that are more symmetric than those of infants with UCLP. Hence, analyses that explored differences in facial asymmetry between cleft and NC groups (Tables 4 and 5) were not based on pooled cleft data and included only UCLP infants from the cleft group. Given that the aims of the present study were to compare craniofacial morphology, including asymmetry, between samples of unoperated infants with CLP (regardless of the cleft type) and a control NC sample of unaffected infants, we consider the aims to have been adequately met by the pooling of cleft types for some but not all of the presented analyses. An additional issue related to the sample is the age distribution in the cleft and NC groups. The age range in the cleft group was slightly greater, i.e., 1.1–12.2 months and a mean of 3.8 (SD 2.5) months, than that in the NC group, i.e., 0.4–11.9 months and a mean of 4.8 (SD 2.8) months. A few older children were included in the cleft group because their primary operation had been postponed due to other health problems, such as upper respiratory tract infection and aspiration pneumonia. Although this represents a limitation of the present study, the cleft and NC groups were age-matched as closely as possible. They demonstrated very similar age distributions, means, and SDs, and all of the presented data were age-adjusted.

Our assumption that the midline points ( $n-s-ba$ ) can reliably represent a mid-facial plane that divides the face into two equal halves has been drawn from the literature (27,31); however, this may be debatable. For example, the spatial position of  $n$  could be affected by the type of cleft, and those of  $ba$  and  $s$  may be affected in subjects with hydrocephalus. Therefore, preliminary analyses were conducted and revealed that the positions of the 3 landmarks were apparently not significantly affected by abnormalities in craniofacial morphology in either the cleft or NC groups. A number of investigators have reported

significant differences in the size and shape of the cranial base of individuals with CLP compared with NC individuals. In contrast, very few differences in post-natal cranial base morphology and growth have been noted between individuals with isolated cleft lip and NC individuals. In the present study, the cranial base values ( $n-ba$  and  $n-s-ba$ ) did not differ significantly between the groups. Although not demonstrated in our study, a trend toward a greater cranial base length in NC individuals compared to cleft individuals has been reported previously (32).

## Conclusion

Differences in mid-facial breadths and nasal bone dimensions were associated with clefting (UCLP versus NC). The nasal bones of individuals in the UCLP group deviated away from the cleft. It is important for members of the multidisciplinary team that manages cleft patients to have an understanding of how clefts affect not only dental and oral structures but also other surrounding anatomical structures. This study shows that CLP affects the size and orientation of the nasal bones and is also associated with alterations in the morphology of other facial bones at positions distant from the region of the cleft.

## Acknowledgements

This research was supported by the Australian Dental Research Foundation. We gratefully acknowledge the guidance and expertise of Dr David Netherway in the planning and execution of this study.

## Authors' contributions

Conception and design: NT, ZR, AY, GT  
 Analysis and interpretation of the data: NT, SM, GT  
 Drafting of the article: NT, SM, PJA, GT  
 Critical revision of the article: SM, PJA, GT  
 Final approval of the article: NT, SM, ZR, AY, PJA, GT  
 Provision of patients, collection and assembly of data: ZR, AY  
 Statistical expertise: GT  
 Obtaining of funding: NT, GT

## Correspondence

Dr Suzanna Mihailidis  
BDS, BEc, PhD (Adelaide)  
Craniofacial Biology Research Group  
School of Dentistry, The University of Adelaide  
South Australia 5005, Australia  
Tel: + 61 (0)8 83035968  
Fax: + 61 (0)8 83130793  
Email: [suzanna.mihailidis@adelaide.edu.au](mailto:suzanna.mihailidis@adelaide.edu.au)

## References

1. Hajeer MY, Ayoub AF, Millett DT. Three-dimensional assessment of facial soft-tissue asymmetry before and after orthognathic surgery. *Br J Oral Maxillofac Surg.* 2004;**42(5)**:396–404.
2. Enemark H, Bolund S, Jorgensen I. Evaluation of unilateral cleft lip and palate treatment: Long term results. *Cleft Palate J.* 1990;**27(4)**:354–361.
3. Hujoel PP, Bollen AM, Mueller BA. First-year mortality among infants with facial clefts. *Cleft Palate Craniofac J.* 1992;**29(5)**:451–455.
4. Tolarová MM, Cervenka J. Classification and birth prevalence of orofacial clefts. *Am J Med Genet.* 1998;**75(2)**:126–137.
5. Honda Y, Suzuki A, Ohishi M, Tashiro H. Longitudinal study on the changes of maxillary arch dimensions in Japanese children with cleft lip and/or palate: Infancy to 4 years of age. *Cleft Palate Craniofac J.* 1995;**32(2)**:149–155.
6. Ross RB. Treatment variables affecting facial growth in complete unilateral cleft lip and palate. *Cleft Palate J.* 1987;**24(1)**:5–77.
7. Pirinen S. Genetic craniofacial aberrations. *Acta Odontol Scand.* 1998;**56(6)**:356–359.
8. Carinci F, Pezzetti F, Scapoli L, Martinelli M, Avataggiato A, Carinci P, et al. Recent developments in orofacial cleft genetics. *J Craniofac Surg.* 2003;**14(2)**:130–143.
9. Jugessur A, Lie RT, Wilcox AJ, Murray JC, Taylor JA, Saugstad OD, et al. Variants of developmental genes (TGFA, TGFB3, and MSX1) and their associations with orofacial clefts: A case-parent triad analysis. *Genet Epidemiol.* 2003;**24(3)**:230–239.
10. Neiswanger K, Cooper ME, Liu YE, Hu DN, Melnick M, Weinberg SM, et al. Bilateral asymmetry in Chinese families with cleft lip with or without cleft palate. *Cleft Palate Craniofac J.* 2005;**42(2)**:192–196.
11. McIntyre GT, Mossey PA. Asymmetry of the parental craniofacial skeleton in orofacial clefting. *J Orthod.* 2002;**29(4)**:299–305.
12. Saha S, Loesch D, Chant D, Welhann J, El-Saadi O, Fañanás L, et al. Directional and fluctuating asymmetry in finger and a–b ridge counts in psychosis: A case-control study. *BMC Psychiatry.* 2003;**3**:3.
13. Hood CA, Bock M, Hosey MT, Bowman A, Ayoub AF. Facial asymmetry—3D assessment of infants with cleft lip & palate. *Int J Paediatr Dent.* 2003;**13(6)**:404–410.
14. Katsumata A, Fujishita M, Maeda M, Arijii Y, Arijii E, Langlais RP. 3D-CT evaluation of facial asymmetry. *Oral Surg Oral Med Oral Pathol Oral Radiol Endod.* 2005;**99(2)**:212–220.
15. Yusof A. Craniofacial growth changes in Malaysian Malay children and young adults: A cross-sectional 3-dimensional CT study [dissertation]. [Adelaide (AU)]: University of Adelaide; 2007.
16. Abbott AH, Netherway DJ, David DJ, Brown T. Application and comparison of techniques for three-dimensional analysis of craniofacial anomalies. *J Craniofac Surg.* 1990;**1(3)**:119–134.
17. Abbott AH, Netherway DJ, Niemann DB, Clark B, Yamamoto M, Cole J, et al. CT-determined intracranial volume for a normal population. *J Craniofac Surg.* 2000;**11(3)**:211–223.
18. Dahlberg G. Statistical methods for medical and biological students. London: George Allen & Unwin Ltd; 1940.
19. Breitsprecher L, Fanghänel J, Metelmann HR, Mlynski G, Würfel F, Freise K, et al. The influence of the muscles of facial expression on the development of the mid-face and the nose in cleft lip and palate patients. A reflection of functional anatomy, facial esthetics and physiology of the nose. *Ann Anat.* 1999;**181(1)**:19–25.
20. Nanci A. Ten Cate's Oral Histology: Development, structure, and function. 6th ed. Missouri: Mosby; 2003.
21. Krogman WM, Jain RB, Long RE Jr. Sex differences in craniofacial growth from one month to ten years of cleft lip and palate. *Cleft Palate J.* 1982;**19(1)**:62–71.
22. Long RE Jr, Jain RB, Krogman WM. Possible sex-discriminant variables in craniofacial growth in clefting. *Am J Orthod.* 1982;**82(5)**:392–402.
23. Zemann W, Santler G, Kärcher H. Analysis of mid-face asymmetry in patients with cleft lip, alveolus and palate at the age of 3 months using 3D-COSMOS measuring system. *J Craniomaxillofac Surg.* 2002;**30(3)**:148–152.
24. Filho OGS, Normando ADC, Filho LC. Mandibular growth in patients with cleft lip and/or cleft palate—The influence of cleft type. *Am J Orthod Dentofacial Orthop.* 1993;**104(3)**:269–275.
25. Nielsen BW, Mølsted K, Skovgaard LT, Kjaer I. Cross-sectional study of the length of the nasal bone in cleft lip and palate subjects. *Cleft Palate Craniofac J.* 2005;**42(4)**:417–422.
26. Trotman CA, Ross RB. Craniofacial growth in bilateral cleft lip and palate: Ages six years to adulthood. *Cleft Palate Craniofac J.* 1993;**30(3)**:261–273.
27. Kyrkanides S, Klambani M, Subtelny JD. Cranial base and facial skeleton asymmetries in individuals with unilateral cleft lip and palate. *Cleft Palate Craniofac J.* 2000;**37(6)**:556–561.

28. Laspos CP, Kyrkanides S, Tallents RH, Moss ME, Subtelny JD. Mandibular and maxillary asymmetry in individuals with unilateral cleft lip and palate. *Cleft Palate Craniofac J.* 1997;**34(3)**:232–239.
29. Mølsted K, Dahl E. Asymmetry of the maxilla in children with complete unilateral cleft lip and palate. *Cleft Palate J.* 1990;**27(2)**:184–190.
30. Farkas LG, Hajnis K, Posnick JC. Anthropometric and anthroposcopic findings of the nasal and facial region in cleft patients before and after primary lip and palate repair. *Cleft Palate Craniofac J.* 1993;**30(1)**:1–12.
31. Kwon TG, Park HS, Ryoo HM, Lee SH. A comparison of craniofacial morphology in patients with and without facial asymmetry—A three-dimensional analysis with computed tomography. *Int J Oral Maxillofac Surg.* 2006;**35(1)**:43–48.
32. Mars M, Houston WJ. A preliminary study of facial growth and morphology in unoperated male unilateral cleft lip and palate subjects over 13 years of age. *Cleft Palate J.* 1990;**27(1)**:7–10.