

Running Head: A YEAR WITHOUT A CONVICTION

A Year without a Conviction: An Integrated Examination of Potential Mechanisms for
Successful Re-Entry in High-Risk Violent Prisoners

Devon L. L. Polaschek and Julia A. Yesberg

Victoria University of Wellington

Preeti Chauhan

John Jay College of Criminal Justice

Author notes

Devon L. L. Polaschek, School of Psychology, Victoria University of Wellington.

Julia A. Yesberg, School of Psychology, Victoria University of Wellington.

Preeti Chauhan, Department of Psychology, John Jay College of Criminal Justice

Devon Polaschek is now at the School of Psychology, The University of Waikato.

Julia Yesberg is now at the Mayor's Office for Policing and Crime, London.

This research was supported in part by grants from the New Zealand Department of Corrections, Victoria University of Wellington, and Fulbright New Zealand. We thank all those Corrections staff and offenders who contributed to this research.

Correspondence concerning this article should be addressed to Devon L. L. Polaschek, School of Psychology, The University of Waikato, Private Bag 3105, Hamilton 3240, New Zealand. Email: devon.polaschek@waikato.ac.nz

Abstract

Some high-risk prisoners on parole “beat the odds”: remaining in the community through their first year without incurring even minor reconvictions. What makes the difference? We investigated three potential mechanisms for post-release survival—lower dynamic risk, greater readiness for parole, and earlier and longer parole oversight—in two samples: 120 men who had completed 8 to 12 months in an intensive treatment unit for high-risk prisoners, and 151 comparison prisoners who had received less or no treatment. Based on structural equation modeling, results indicated that treatment status (completer or comparison), and readiness for release each directly predicted when and for how long a prisoner would be on parole, which in turn predicted reconviction. Significant indirect pathways indicated that lower dynamic risk, better release readiness and longer/earlier parole oversight all contributed to the lower rates of reconviction in high-risk prisoners, whether treated or not.

Keywords: parole, psychological treatment, high-risk, treatment readiness, dynamic risk

Introduction

In the first 12 months after their release, half of New Zealand's high-risk prisoners are reimprisoned for new offenses. Half of those do not even survive the first 100 days without committing an offense serious enough to return them to custody (Nadesu, 2007). So how is it that some do? This study examines putative mechanisms for avoiding reconviction altogether in the first 12 months of after release for two samples of high-risk male prisoners: completers of an intensive psychological treatment program, and a similar sample who had less or no significant treatment prior to release. Three mechanisms are explored: lower pre-release dynamic risk for reconviction, greater readiness for release, and type/length of parole.

Conceptual Approaches to Re-entry Success

The problem of high rates of released prisoners returning to custody is familiar across the English-speaking world, attracting substantial attention from government, policy-makers, legislators, correctional workers and others over several decades. A variety of strategies have been implemented in response, influenced by distinct ideas about the causes of prison returns. The first idea, deterrence theory assumes that threatening people with punishment will discourage new offending. According to this view, stringent monitoring with the threat of return to prison for even minor violations of parole will deter those released from breaking rules that lead to return. Although popular, this approach is largely not supported by research evidence (Travis & Western, 2014), and is not directly tested here.

A second main approach is rehabilitative, based on the notion that criminals have relatively stable but changeable individual characteristics that increase their propensity

for criminal behavior. A prison sentence alone has no particular effect on these characteristics: variously called dynamic risk factors, or criminogenic needs. But if dynamic risk factors are reduced or ameliorated by interventions based on cognitive and behavioral strategies during the sentence, prisoners will be released at lower risk of new offenses than before (Aos, Miller, and Drake 2006; Lipsey and Cullen 2007; Wong & Gordon, 2013). The best-known articulation of this approach is embodied in the empirically-based *Psychology of Criminal Conduct* (Bonta & Andrews, 2016), and referred to as the Risk-Need-Responsivity model. Major dynamic risk factors include antisocial temperamental features, peers and thought patterns; substance abuse; and poor family, employment and leisure functioning. Following from this model, dynamic risk levels at release predict recidivism, whether as a consequence of treatment, or because the prisoner had fewer risk factors in the first place (Howard & Dixon, 2013; Wong & Gordon, 2006).

The third approach, also often also viewed as rehabilitative, is referred to as re-entry, reintegration, or resettlement. According to this perspective, the primary reason people return to prison is not because they found the prospect insufficiently threatening, nor because they continued to be at risk of crime due to poor emotional regulation, ongoing drug use, criminal attitudes, criminal peers and the like. Rather, they re-entered the community without the basic necessities of life in place (Visher & Travis, 2011), such as adequate housing, health care, financial support, employment and social support (Burnett, 2009; Griffiths, Dandurand, & Murdoch 2007). The exact mechanisms involved are usually not specified, but the implication is that offenders may fall back into criminal behavior because they have few or no options for lawful survival. Long periods in prison

and associated penalties (e.g., offender registration, residential and employment restrictions) may even increase barriers to establishing oneself in the community, making return to prison a rational choice (Braga, Piehl, and Hureau 2009; Paternoster, 2010). This rather dismal perspective may be particularly relevant in the US where very high rates of imprisonment and geographic inequalities have concentrated parolees in a relatively narrow range of deprived and crime-infested urban neighborhoods (Travis & Western 2014; Visher & Travis, 2011). The re-entry perspective suggests that the combination of making plans that prepare the prisoner for release followed by post-release support, makes the difference between conviction-free survival and reconviction or reimprisonment (Duwe, 2013; Graffam & Shinkfield 2012; Mears & Cochran 2015; Veysey, Ostermann, & Lanterman 2014). These portrayals of the difficulties of re-entry contribute to our use of the term survival here to refer to the experiences of offenders who gain a foothold in the community on re-entry, and remain there without any new convictions.

There is widespread anecdotal evidence of poorly prepared prisoners entering the community, and comprehensive re-entry programs that include a community component have been subject to research (Braga, et al., 2009; Duwe, 2012; Garland & Hass 2015; Lattimore & Visher, 2013; Roman, Brooks, Lagerson, Chalfin, & Tereschenko, 2007; Taylor, 2013; Wilson & Davis, 2006; Zhang, Roberts, and Callanan 2006). But there is limited empirical evidence regarding readiness levels or the quality of preparation itself at the point of release (Visher & Lattimore, 2007; Wolff, Shi, & Schumann, 2012). Research using a sample related to the current study found that lower readiness for release predicted reconviction in high-risk treated prisoners, even when static risk of

reconviction was already taken into account (Polaschek, Kilgour, & Wilson, 2017). A series of studies of similar samples that measured the quality of release plans (e.g., accommodation, employment, social support) found that higher quality plans predicted improved recidivism outcomes (Dickson, Polaschek, & Casey, 2013; Willis & Grace, 2008, 2009, with child-sex offenders), and worked via the mechanism of improved experiences in the community (Dickson, Polaschek, & Wilson, 2017).

Evaluations of the Effects of Parole

Along with dynamic risk and readiness at release, the third important variable examined in this study is parole: the process by which prisoners finish their sentences with a term of oversight in the community, and various associated requirements (e.g., residential curfews, alcohol and drug treatment). There has been growing interest in establishing the effects of parole on recidivism, but there are several primary challenges to doing so.

The first problem to consider is that there are various types of parole release in use. For example, some prisoners are given sentences that must be served fully in custody, with no post-release oversight (Petersilia, 2003). Others may have a mandatory period of parole after a fixed term in prison (Ostermann & Hyatt, 2016; Wan, Poynton, Doorn, & Weatherburn, 2014), while for still others the timing and length of parole may be at the discretion of a parole board after prisoners have served some statutorily-specified minimum proportion of their sentence. The type of parole granted to a prisoner is therefore often related, at least in part, to characteristics of the prisoner that are themselves predictive of recidivism. For example, those who “max out” whether voluntarily or because they are denied early release may be at higher risk of recidivism

regardless of how their release is managed (Gottfredson, Mitchell-Herzfeld, & Flanagan, 1982), while those released early on discretion are likely to have completed programs in prison that may improve their release survival prospects. These associations thus create sample biases that need to be taken into account.

The second challenge is to factor in the prevailing policies and actual practices applied to those on parole. At best probation officers are both “cops and counsellors” (Kennealy, Skeem, Manchak, & Loudon, 2012) but extant research suggests that parole officers with primarily a surveillance or law enforcement orientation to parole are likely to increase recidivism in supervisees (Paparozzi & Gendreau, 2005; Richards & Jones, 2004), while a focus on a high quality, supportive relationship, human service, and discretion in processing parole violations may decrease recidivism (Bonta, Ruggie, Scott, Bourgon, & Yessine, 2008; Skeem, Eno Loudon, Polaschek, & Camp, 2007).

Given that parole policies and practices may influence the detection, prosecution and return to prison of those deemed to be in violation of them, a final consideration in evaluating the effects of parole is the outcome measures used. The use of parole violations alone as a recidivism outcome measure is problematic for this very reason; it can say more about the regime than the offender’s success or otherwise as a law-abiding citizen (Petersilia, 2003). Relatedly, in jurisdictions where brief periods in custody prevail in managing high rates of parole violation, examination of other types of recidivism outcome requires statistical controls for the amount of time in custody for violations, since this is time that takes away from the opportunity to commit new, community-based offenses. In other words, parole policies create methodological

challenges even with regard to the consistent measurement of outcomes (Ostermann, Salerno, & Hyatt, 2015).

Existing research varies in the extent to which it manages effectively these methodological issues. But the overall picture tends to suggest that release onto parole oversight predicts lower recidivism than no oversight, particularly while the supervision is ongoing (Ostermann, 2013; Vito, Higgins, & Tewksbury, 2017; Wan et al., 2014). This study builds on those findings by examining how in-prison treatment, prisoners' dynamic risk, and release readiness contribute to parole in predicting recidivism.

Treatment and Release Readiness for High-Risk New Zealand Prisoners

In New Zealand, high-risk offenders are identified using a static actuarial tool (Bakker, Riley & O'Malley 1999) as those who are estimated to be at least 70% likely to be reconvicted of an offense leading to reimprisonment in the following five years. High-risk prisoners are eligible for treatment in one of four intensive psychological treatment programs located in dedicated program units in four geographically disparate prisons, and providing primarily cognitive-behavioral assessment and treatment over 8 to 12 months. We refer to these units as High Risk Special Treatment Units (HRSTUs). The program's design is consistent with the Risk-Need-Responsivity model of offender rehabilitation (Bonta & Andrews, 2016). Prisoners spend 8 to 10 hours each week in a structured group with 9 others and 2 program facilitators, working through a manualized program designed to address common dynamic risk factors (e.g., criminal attitudes, poor emotional regulation and self-control). Within the constraints of the usual prison rules and regulations, the unit environments are run according to principles that support change (Whitehead, 2014). Notably, New Zealand's indigenous Māori population is strikingly

overrepresented among prisoners eligible to attend these programs. As a result, both the unit and the program include principles, practices and customs that recognize that the majority of participants are non-European.

About two-thirds of those who start the program complete it. Earlier evaluations found the program to be modestly effective in reducing recidivism (Kilgour & Polaschek 2012; Polaschek 2011) for program completers, with no concomitant increase in recidivism for those who did not complete it (see Polaschek & Kilgour 2013, for more information about the program itself). Program completion is also associated with a significant reduction in dynamic risk of recidivism (Polaschek, Yesberg, Bell, Casey, & Dickson, 2016).

Release preparation is integrated into the tasks a prisoner is expected to complete while in the unit; the use of treatment resources to assist prisoners in overcoming personal hurdles to effective planning is hypothesized to increase program impact. Good plans cover housing, employment, prosocial support and strategies for managing risky situations. The overall approach is similar to the pre-release phase of Operation Greenlight (Wilson & Davis 2006).

Despite the availability of HRSTU treatment, the majority of high-risk prisoners do not attend one of these units. Reasons for not doing so include: referral with insufficient time left on sentence, too short a sentence, unwillingness to be referred (e.g., wanting to keep job at current prison, wanting to remain close to family) and attendance at other programs such as drug and alcohol treatment. During the duration of this research project, formal assistance with release planning for these men varied from one-to-one planning with a Corrections staff member, to no assistance.

The Role of the New Zealand Parole Board in Releasing High-Risk Prisoners

New Zealand has a mixture of mandatory and discretionary parole regimes. All prisoners in this study had been sentenced to at least two years' imprisonment, making them eligible for either type of release, with a minimum of at least six months of parole with conditions specified by the national parole board. These prisoners can apply for discretionary parole (i.e., release before the end of the imprisonment sentence) after one-third of their sentence has been served. If the application is successful—typically only in the last third or so of the sentence—it results in a term of parole of six months plus the time that remains on the original prison sentence when parole is granted.

So, in contrast to most jurisdictions, if the parole board refuses early release or prisoners decide to “max out” they will still have a mandatory six months on parole *after* the expiration of their prison sentence. There are similar requirements for each type of parole; in both cases the parole board sets conditions for the parole license, and probation officers provide similar levels of contact and support. Current policy in parole supervision emphasizes a balance between consistent monitoring for compliance with parole conditions, and active help with reintegration. Therefore, officers have some discretion about responses to non-compliance (i.e., processing parole violations).

Research Aims

The primary aim of this study was to test the longitudinal model depicted in Figure 1. Two key mechanisms are investigated in the initial part of the model: estimated dynamic risk of violence and crime, and the quality of preparation for release (readiness for release). Although dynamic risk at release and readiness for release appear on the same level in the model, the unidirectional arrow between the two indicates that we theorize

that progress on dynamic risk factors needs to occur before a prisoner can engage fully with developing a good release plan. Release planning requires that the offender recognize personal risk factors, take responsibility for them, and work co-operatively with others (e.g., staff, family) to develop resources to minimize them.

The model also incorporates both parole length and reconviction, shedding light on parole decision making, and on whether parole itself may be a risk-reducing intervention, when the other mechanisms are taken into account. No direct measures of the amount of support provided on parole were available, so parole length serves as a proxy variable for the amount of service. New Zealand's parole regime prevents parole type and length being examined together in the same model because they are too highly related. Instead, a second model was tested with parole type (early vs. end of sentence) substituted for parole length, to establish which variable is the more informative in understanding interrelationships between mechanisms and reconviction.

Our research questions were: (a) because parole length and type co-vary, are the results similar for a model in which parole type is substituted for parole length? (b) how did dynamic risk and release readiness information factor into the parole board's decisions about type of parole; (c) what direct and indirect effects did intensive treatment completion have in the model, compared to less or no rehabilitative programming? Were there the same mechanisms involved in reconviction for both samples? And finally, (d) what are the relative contributions of dynamic risk of reconviction, the quality of reentry preparation and post-release supervision (i.e., parole length) to the prediction of reconviction in the first twelve months following release on parole?

INSERT FIGURE 1 ABOUT HERE

Method

Samples

We compared and combined two samples in our analyses. The treatment sample was drawn from men who completed treatment in an HRSTU and had been released into the community for at least 12 months ($n = 120$). A further 151 men were included from among those who were eligible for referral but had not undertaken the HRSTU program prior to parole (the comparison sample).

Prisoners eligible for referral to one of the HRSTUs have at least a 70% risk of returning to prison in the five years following release (their RoC*RoI score, see below), are serving imprisonment sentences of at least 2 years, are over the age of 20, have a low-medium or minimum security rating, and have sufficient time left on their sentence to complete the program.

The comparison sample was recruited from men who were eligible for referral for an assessment at an HRSTU¹. Comparisons were not necessarily “untreated”. Seventy-seven percent reported in pre-release interviews that they had taken part in some form of treatment on their current prison sentence. Most frequently they had been provided with individual psychological treatment (32% of the sample). Twenty-five percent had completed a program at a specialized substance dependency treatment unit (variable in length), 18% had completed a medium intensity rehabilitation program (about 140 hours long), 10% had taken part in a short motivational program², 15% had spent time within a Māori Focus Unit, 9% in a Christian faith-based Unit, and 9% in a restorative justice program.

Procedure

Prisoners were recruited individually between 2010 and 2013 by members of the research team through initial contacts made by prison staff. We identified potential participants each month with the assistance of the national parole board, Department of Corrections records and notifications from the HRSTUs. A team of senior PhD students undertook most of the data collection. All were trained and supervised by a senior academic clinician with extensive experience in correctional psychology.

Potential participants were recruited just after a parole board appearance at which they had been advised of an imminent release date. They were informed of the study details, and if they provided written consent, they were then interviewed individually and completed several questionnaires. Usually within days of the interview the participant was paroled, and his progress was then monitored in the community³.

Measures

Violence Risk Scale (Wong & Gordon, 2000). The Violence Risk Scale (VRS) is a 26-item instrument; completed by a qualified and trained assessor using file notes, staff observational data, and information from interviews with the prisoner. Each item is scored on a 4-point scale from absent, or present but unrelated to violence (0) to strongly present and/or related to violence (3), depending on the item⁴; higher scores indicate higher risk. Of the 26 items, 6 comprise the static risk subscale: largely historical items (e.g., current age, age at first violent conviction, quality of early upbringing). The remaining 20 are dynamic: they may alter as a function of successful program participation (e.g., impulsivity, criminal peers, substance use). Although the VRS was designed specifically to assess violence risk in violent offenders, its predictive ability with any type of offending in those with a history of violence has been demonstrated to

be at least as good as for violence alone (Wong & Gordon 2006). Only the 20 items comprising the dynamic scale are used in this study.

Release Proposal Feasibility Assessment - Revised (Wilson, 2011). The RPFA-R is an 11-item staff-rated tool used to evaluate the quality of a prisoner's planned release circumstances, which we refer to here as "readiness for release." Items include: employment, accommodation, previous parole noncompliance, anticipated community and personal support, whether there is a relapse/safety plan in place, whether former victims are likely to be encountered, expected exposure to destabilizing factors, ability to deal with stress, alcohol and drug abuse history and financial circumstances. Items are rated on a scale from 0 to 2, with higher scores indicating poorer anticipated release circumstances. Items are summed to provide a RPFA-R total score, which has been found to predict recidivism (Polaschek, Kilgour, et al. 2017).

Demographic, criminal history, and recidivism data. These data were obtained from New Zealand Department of Corrections electronic records which include access to the single nationalized database in which all criminal convictions are recorded. Static estimates of the current likelihood of convictions leading to future imprisonment were made using the RoC*RoI. The RoC*RoI (Bakker, Riley, & O'Malley 1999) is the Department of Corrections' tool for actuarial risk assessment, developed and cross-validated on two samples; each sample comprised 24,000 offenders. Expressed as a probability between 0 and 1, it is an offender's estimated risk of reconviction leading to re-imprisonment over the following five years. The RoC*RoI score is generated by computer algorithm, based largely on criminal history variables. It requires no clinical judgment or manual calculations, and can be re-estimated at any time, although once it is

high, it changes very slowly, and not at all in response to convictions for offenses committed in prison. During development, the RoC*RoI demonstrated high predictive validity—an AUC of 0.76 (Bakker, O'Malley, & Riley 1998)—and more recent analyses confirm its predictive validity over three years post-release (Nadesu, 2007).

Data Preparation

Scores on VRSs and RPFA-Rs were based on information collected immediately prior to the offender's release. Both VRSs and RPFA-Rs either (a) had recently been completed by therapy staff at the end of treatment and reviewed by senior staff as part of routine clinical practice; or (b) were completed by research assistants based on the pre-release interview with the prisoner and file information, and similarly reviewed.

No inter-rater reliability data were available when the scales were scored during therapy; scoring differences were resolved by therapy staff through discussion to consensus. Of the pre-release VRSs completed by the research assistants, a second trained research assistant completed 40 to estimate inter-rater reliability. The second rater was blind to the first rater's scores, independently reviewing and rescored the information gathered from interviews and electronic offender records. Overall, inter-rater reliability was “almost perfect” for the static items (Landis & Koch 1977): Cohen's kappa (κ) = 0.97, $p < .001$, and very good for the dynamic items: $\kappa = 0.89$, $p < .001$. Item κ s ranged between 0.63 and 1.00. No inter-rater reliability data were collected for RPFA-Rs.

After all other data were collected, we extracted three recidivism indices: any reconviction (excluding violations of parole), reconviction for violence, and reconviction resulting in reimprisonment. We report all three in the descriptive statistics for this study but the modeling analyses presented here are based only on which offenders were

reconvicted of any new offense other than breaches of parole, based on the date of the actual offense that led to the conviction. We chose reconviction as the recidivism outcome (i.e., instead of parole violation, violent reconviction or reconvictions leading to imprisonment) because it had a higher base rate than any of these other indices, and because its absence best captured what study participants indicated was their view of successfully desisting from offending over the first 12 months following release⁵.

Planned Analyses

After reporting descriptive results on the key variables for the samples, we explored the bivariate correlations between dynamic risk at release (VRS dynamic scale), readiness for release (RPFA-R), length of parole and reconviction, using SPSS 22 for Mac.

Next, we examined a series of path models to enable simultaneous testing of both the direct and indirect relationships between whether offenders were HRSTU-treated or not, dynamic risk, release readiness, and length of parole, on recidivism (see Figure 1). We conducted individual parameter testing by setting each parameter to zero and examining model fit. Pathways that did not worsen model fit compared to the baseline model were set to zero to identify the final, best-fitting model. We examined indirect effects with the Model INDIRECT command and report bias-corrected bootstrapped 95% confidence intervals. In order to assist in interpreting the role of the proxy parole length variable we repeated testing of the baseline model substituting parole type for parole length. We also conducted multi-group analyses for treated and comparison offenders. Here, the baseline model allowed for each parameter to vary by group. Next, we constrained each parameter to be equal to determine whether it worsened model fit. If it did not, then the parameters were constrained to be equal for the final model.

Path models were tested using Mplus (Version 7.2; Muthén & Muthén 1998-2012). The categorical outcome variable dictated the use of weight least squares mean and variance adjusted estimator (WLSMV), which does not compute the conventional chi square difference test because the differences do not follow a chi square distribution. Instead the mean adjusted robust chi square difference test (DIFFTEST) was used to calculate differences in the comparative fit of models (Muthén, & Muthén). The relative fit of each model was evaluated based on both the resulting chi square statistic and other standard fit indices: the root mean square error of approximation (RMSEA; values < .08 indicate reasonable fit) and the Comparative Fit Index (CFI; values > .80 suggest adequate fit; Browne & Cudeck 1993). Although we examined absolute indices of fit, our primary interest was based on relative fit, parsimony, and variance explained.

Results

Descriptive Data

Table 1 contains sample descriptive data. Because sample membership was non-random, we thoroughly explored potential differences between the two samples on variables that preceded the possible effects of treatment and that could be correlated with reconviction (e.g., criminal history, age). Referring to Table 1, differences were all non-significant except for the number of days that the prisoners were sentenced to spend in prison (i.e., if they served their full sentence). The number of days was significantly longer for the treated sample, relative to the comparison sample. However, length of sentence given was not correlated with reconvictionⁱ.

INSERT TABLE 1 ABOUT HERE

The remaining four variables in Table 1 on which the two samples differed were dynamic risk for violence, readiness for release, length of parole granted, and parole type (i.e., early release vs. end of sentence). And this is the pattern seen in Table 1: the treatment sample had significantly lower dynamic risk scores for violence (VRS dynamic) at release with a medium effect size, and better readiness for release (i.e. lower scores on the RPFA-R); a small effect. The treatment sample was given longer parole periods consistent with the significantly higher likelihood that they would be released prior to the end of their sentence. Both differences—the length of parole order given and the proportion released early—were large effect sizes. On average, treatment sample men were on parole for more than a year whereas the comparison sample averaged about 10 months.

By conventional standards the treatment program “worked” (see Table 2): in the first 12 months following release, significantly fewer treatment sample members were reconvicted for violence, or were reimprisoned as a result of new convictions. There was a similar effect size for any reconviction, although it did not reach conventional significance. In addition to showing consistent effects in favor of the treatment sample, Table 2 also reveals why the base-rate of reconviction in these high-risk samples makes a period as short as 12 months suitable for recidivism analyses.

INSERT TABLE 2 ABOUT HERE

Next, we calculated Pearson’s correlations to describe the bivariate relationships between the variables to be modeled. Estimated violence risk based on dynamic factors (VRS dynamic), level of release preparedness (RPFA-R), and length of parole demonstrated medium to large correlations with each other, for both treatment and

comparison samples. As expected, the RoC*RoI emerged as an important covariate of reconviction. However, VRS dynamic and RPFA-R scores showed weak and, especially for the VRS, mostly non-significant correlations with both the RoC*RoI and with reconviction. We examined whether correlation coefficients in Table 3 were significantly different for the two samples, using a Fisher's Z test. No differences were statistically significant.

More than half of the combined sample was released at the end of their sentences, and therefore had a parole length of 6 months. For all subsequent analyses parole length was transformed, by recoding into 4 categories (1 = 6 months or less, 2 = 6 to 9 months, 3 = 9 to 12 months, 4 = more than 12 months).

INSERT TABLE 3 ABOUT HERE

Longitudinal Structural Models of Reconviction

Combined sample analyses. The baseline model estimating all pathways in Figure 1 accounted for 24% of the variance in reconviction ($\chi^2 = 14.56$, $df = 3$, $p < .01$; CFI = .92, RMSEA = .12). Individual parameter testing of this model—systematically re-estimating the model with one pathway at a time set to zero—found that all but four pathways worsened model fit. The significant pathways were: treatment status to dynamic risk (Path A; $\Delta\chi^2 = 23.0$, $p < .001$), treatment status to parole length (Path C; $\Delta\chi^2 = 32.2$, $p < .001$); dynamic risk to release readiness (Path D; $\Delta\chi^2 = 45.9$, $p < .001$), dynamic risk to parole length (Path E; $\Delta\chi^2 = 4.5$, $p \leq .001$), release readiness to parole length (Path F; $\Delta\chi^2 = 11.9$, $p < .001$), parole length to reconviction (Path J; $\Delta\chi^2 = 21.2$, $p < .001$) and RoC*RoI to reconviction (Path L; $\Delta\chi^2 = 8.9$, $p = .003$). The revised model—with the four non-significant pathways removed—accounted for the same amount of variance in

reconviction as the original model and was equivalent in fit ($\chi^2 = 19.88$, $df = 7$, $p < .001$; $\Delta\chi^2 = 9.0$; $p = .06$; CFI = .91, RMSEA = .08, $r^2 = .20$). The four pathways that did not alter fit when set to zero were: from treatment status to release readiness (Path B; $\Delta\chi^2 = 1.00$, $p = .31$), from dynamic risk to reconviction (Path G; $\Delta\chi^2 = 3.2$, $p = .07$), from release readiness to reconviction (Path H; $\Delta\chi^2 = 2.03$, $p = .15$), and from treatment status to reconviction (Path K; $\Delta\chi^2 = 1.11$, $p = .29$).

INSERT FIGURE 2 ABOUT HERE

Figure 2 illustrates this best fitting model for predicting reconviction. It shows that although removing the pathway between dynamic risk for violence and reconviction significantly reduced model fit in the previous step, this pathway was not significant in the revised model: indicated by the broken line ($p = .07$). All other direct pathways remained significant (all $ps < .01$). So, whether or not an offender attended and completed HRSTU treatment was significantly associated with dynamic risk for violence but not readiness for release, when all the other relationships were considered. Treatment status also retained a significant direct relationship with parole length independent of its relationship to dynamic risk. Parole length was a strong predictor of recidivism and is the only variable that directly predicted reconviction, other than the RoC*RoI, which, as anticipated, retained a strong independent relationship to reconviction.

Next, we examined indirect pathways based on the best-fitting model (Figure 2), allowing us to investigate whether specific variables mediate the relationship between treatment status and reconviction. Table 4 lays out the results of these analyses. It reveals that all but two of these indirect pathways were significant, with the remaining two approaching conventional significance levels (both $ps < .10$). Taken together the findings

suggest that the best way to understand differences in reconviction rates between treated and comparison offenders is through the effects of treatment on intermediate variables that are expected to be better in treated men. Treatment completers have longer parole periods because they are more likely to be released early. Through early release, treatment exerts a significant indirect effect on reconviction. However, both the dynamic and release readiness play a role here too; there is a significant indirect effect such that treated men have lower dynamic risk which in turn is associated with better readiness for release, leading to longer parole length and from there to lower reconviction. This pathway supports the conclusion that although dynamic risk for violence and readiness for release do not have their own direct relationships to reconviction, they instead operate to make early release more likely, and early release in turn, through its effect on parole length, reduces reconviction.

INSERT TABLE 4 ABOUT HERE

But the length of parole given, rather than early release, is included in the baseline model in Figure 1. To clarify the role of early parole compared to parole length, a second series of path models were examined. The only change from the model in Figure 1 was the substitution of a dichotomous variable—type of parole (0 = end of sentence, 1 = before end of sentence)—instead of length of parole. The results were similar overall. The baseline model estimating all pathways (as in Figure 1) accounted for a similar amount of variance (22%) and was significant, with similar fit indices ($\chi^2 = 8.97$, $df = 3$, $p = .03$; $CFI = .91$, $RMSEA = .09$). The same direct pathways made significant or non-significant contributions, respectively, to the fit. However, none of the indirect pathways were significant. Hence, while parole length mediated the relationship between various factors

to reconviction in the earlier models, type of parole did not. This difference suggests that parole length provides a more sensitive and informative measure of the interrelationships between the proposed mechanisms than does the type of decision made by the parole board.

Analyses by treatment status. We conducted a series of multiple-group analyses on the revised model in Figure 2, to determine if there were different pathways to reconviction for men from the treatment sample relative to the comparison sample. The baseline model, with all of the pathways for both groups estimated, accounted for 29.8% of the variance for the treatment group and 16.5% for the comparison group ($\chi^2 = 11.73$, $df = 4$, $p = .02$; CFI = .94, RMSEA = .12). There were no noteworthy differences in fit in the alternative models, which sequentially constrained one pathway at a time to equality for both treated and comparison men. Thus, consistent with the earlier bivariate correlations (Table 3) there were no significant differences in the relevant mechanisms or how they interacted for treatment vs. comparison samples.

Discussion

How do high-risk offenders survive their first year of re-entry without reconviction? Our first aim was to evaluate the relative contributions of three possible mechanisms in predicting who will remain free of reconviction during this period. Overall, we found that treatment status, dynamic risk and release readiness operated interactively through parole length to determine reconviction. Longer parole appeared to protect these high-risk offenders from reconviction. We first discuss the top part of the model—the findings in relation to parole length (or parole type) as an outcome (Paths A to F)—and then examine the whole model (Paths A to L) as it predicts reconviction.

Parole Length and Type: Evaluating Predictors of Parole Board Decisions

We found similar direct relationships in the models for parole length and parole type: our first research question. This result enables us to comment on the determinants of both aspects of parole board decisions together. Addressing our second research question, dynamic violence risk and readiness for release were each univariate predictors of parole length and type (Table 2). But in Figure 2, release readiness was directly and independently influential in both early parole and parole length decisions; and it mediated the relationship between dynamic risk and parole length/type.

This result was particularly interesting because when they evaluate prisoners for release, the parole board is not provided with scores on the instruments used in this study; instead they are given a selection of the qualitative information also used to make the study's ratings. The current findings suggest that board members are attending to relevant information in making decisions about parole, despite the considerable challenges to doing so (Gobeil & Serin, 2010; Mooney & Daffern, 2014). Notably, it appears they are placing a premium on the quality of release preparation, as arguably they should.

Effects of intensive psychological treatment

Our third research question required that we compare the results for the intensively treated with the less/untreated comparison sample. As we noted earlier, Table 2 shows that by the standards of a quasi-experimental recidivism outcome study, the HRSTU program works, especially when one considers that some of the comparison sample also undertook risk-reducing interventions: effect sizes for the recidivism of treatment vs. comparison men were in the range of .12 to .19, depending on the outcome considered.

Turning now to the structural equation model results (Figure 2), treatment status maintained a strong direct relationship with dynamic risk HRSTU-treated men obtained lower dynamic risk scores compared to the other sample, when both were assessed at the point of release (Table 1). Our previous research has found that HRSTU completers' VRS dynamic scores are significantly higher prior to treatment—similar to those of the comparison sample at release—but decline over the course of treatment (Polaschek, et al., 2016).

In fact, the overall pattern in this top portion of the model (Paths A, C, D, and F) suggests partial mediation: treatment status had a significant direct relationship to parole length even after accounting for the indirect pathways through dynamic risk for violence and release readiness. This direct pathway suggests that there remain variables that distinguish treatment and comparison men that have not been captured in this analysis: additional information that the parole board may be factoring into their decision-making process. One possibility is information about the current level of engagement in change on dynamic risk factors. Previous research on data from this project has found that HRSTU completers are also more engaged in change on dynamic risk factors than comparison men: the latter on average are only contemplating change at the point of release. But the mean stage of change score for treatment men is preparation (i.e., they have been rated as already exhibiting potentially risk-reducing changes in behavior when they appear to the parole board; Polaschek, et al., 2016). The board may pick up this difference. It may even be evident in how the prisoner interacts and talks about his progress and release plans, when he appears before them.

Overall Prediction of Reconviction

Our final research question reviews the model in its entirety (Figure 2). Of the direct pathways postulated in Figure 1, four were found to be non-significant, and three of these four (G, H, & K) were pathways to reconviction: from dynamic violence risk, release readiness, and treatment status, respectively. Treatment status, and release readiness (for treated offenders only) were significant univariate correlates of reconviction (see Table 3), but they failed to maintain independent predictive status in Figure 2. These results support the importance of multivariate analyses in treatment outcome evaluations. The inclusion of relevant intervening variables provides a considerably more informative picture of how high-risk prisoners—treated and less treated—may avoid reconviction. For example, although previous research has found release readiness scores were predictive of reconviction for HRSTU completers (Polaschek et al., 2017), this is the first study to demonstrate that this relationship is mediated by variables more proximate to reconviction (i.e., parole length).

The overall results have one other important implication: for the dynamic risk scores. This study found the VRS dynamic items scale was not significantly correlated with reconviction when considered on its own, in contrast to previous findings with Canadian prisoners (Lewis, Olver, & Wong, 2013; Wong & Gordon, 2006). Typically, this finding would be interpreted as indicating that the measure is not valid in this context and should be discarded. But the multivariate analyses used here show that this would be an erroneous conclusion. The VRS's role in the indirect pathways suggests that it is an important factor in both parole board decisions about parole length, and in reconviction. The time elapsed between VRS scoring at release and reconviction (or not), coupled with the positive effects of longer parole may be responsible for the lack of direct relationship

between the VRS dynamic scores and reconviction. This contention fits with other recent analyses showing that the more proximal a risk measurement is to reconviction, the stronger its predictive validity (Scanlan, 2015). For more distal assessments to be predictive, there must be no significant changes in the assessed variables subsequent to the assessment, or if there are, such changes must preserve the rank ordering of participants. Earlier research with a small sample of HRSTU completers showed that post-treatment change did not necessarily conform to these assumptions (Yesberg & Polaschek, 2014).

In fact, all three possible mechanisms—dynamic risk for violence, readiness for release and length of parole—have a role in explaining the relationship between treatment status and reconviction. Almost all indirect pathways tested were significant, including the longest one, from treatment status through dynamic violence risk, release readiness and parole length to reconviction. These results suggest that there are meaningful differences in HRSTU-treatment completers at every point in the model.

As we noted above, we did examine the model with parole type substituted for parole length and found the overall result was quite similar in regard to which direct relationships remained significant. However, the resulting loss of significant indirect relationships suggests the value of retaining the less parsimonious model that includes parole length, to acknowledge that it provides a more nuanced view of the links between the mechanisms and recidivism. For example, it serves as a reminder that it is probably not simply that “maxing out” vs any early release accounts for the relationship between the modelled variables and recidivism.

The strength and direction of the relationship between parole length (or type of parole) and recidivism argues strongly for more detailed future investigations into *how* parole may prevent recidivism, despite the challenges noted earlier in disentangling decision making about parole from parole itself, and in identifying which elements of parole are most likely to be responsible for any benefits.

Finally, there were no differences found in pathway fit by sample in the multi-group analyses, indicating that relationships between variables were similar regardless of treatment status. Although statistical power may have limited these analyses, on the face of it, there is no evidence that completing HRSTU treatment might interact in some unique way with parole length in protecting against recidivism. Again, this finding is consistent with previous research showing that both treatment and comparison samples evince similar amounts of dynamic factor-related change while on parole; the treatment sample starts parole at lower risk due to changes made in treatment (Polaschek et al., 2016), but then continues to change in the community at a similar rate to the comparison sample (Yesberg & Polaschek, 2017). The failure to find between-sample differences supports the view that similar processes account for survival in both treatment completers and comparison prisoners, although of course much more investigation of this contention is needed. However, it might be argued from the pattern of findings to date that a similar, but more cost-effective result could be achieved by diverting HRSTU resources, and simply releasing all offenders earlier onto a longer period of parole. This is an interesting idea, but one that is unlikely to be adopted. It would rightly be difficult to persuade a parole board to release earlier men they currently retain through to the ends of their sentences, because these men are likely to be at higher dynamic risk of reconviction, and

in possession of poorer release plans than those they do release early. Even HRSTU graduates who are held in prison for more than six months after the program show this pattern of being at higher risk straight after the program than those who are released immediately (Polaschek, 2015). Even when those retained to the end of their prison sentence *are* let out, their rates of parole failure in the first six months are significantly higher, as we have seen. Therefore, it seems likely that there are key changes that need to be made in prison, before the process of parole becomes a sufficiently safe one for the community that receives these parolees.

Limitations and Conclusions

This study has several important limitations. First, it does not directly investigate change. Therefore, although we have referred to release readiness and dynamic violence risk as plausible mechanisms that make desistance more likely, we have not demonstrated here that they are *changeable* mechanisms (Kroner & Yessine, 2013). Our approach is consistent with preliminary steps for identifying mechanisms in other fields such as public health. But here, just as has happened in those fields (Galea, Riddle, & Kaplan 2010), we acknowledge the importance of extending this type of preliminary research to demonstrating changeability.

Second, the design was quasi-experimental. Although the two samples were more similar than different on those variables that could be compared, unmeasured important pre-existing differences between men who “volunteer” to attend the HRSTU programs and those who take some other route to release may be hidden by the design. These results therefore require replication with other programs and jurisdictions. However, the most often cited concern about quasi-experimental designs—that the two groups differ on

motivation to change—can be partly addressed. Elsewhere we have shown that the level of engagement in change for the HRSTU sample prior to treatment was equivalent to the comparison sample at release. Both samples were primarily only contemplating change at these respective points (as measured on the VRS stage of change scale; see Polaschek, et al., 2016, for details). Furthermore, although the treatment sample attended the unit after providing informed consent, it was not uncommon for the parole board to tell them that they would not be getting early release unless they did attend. Lastly, most men in the comparison group consented to undertake a variety of less substantial treatments, suggesting that a number of them had some motivation to change. In short, the limited evidence available does not support the idea that the treatment sample was significantly different in engagement in change or motivation for change prior to attending an HRSTU.

Third, parole length co-varies with early release. Being granted early release may simply reflect parole board recognition of the progress an offender *has* made whereas length may be a proxy for a variety of processes associated with oversight in the community that we have not yet investigated (e.g., more helpful support from probation officer, more participation in post-release treatment). Further investigations should include additional variables that could cover both (a) the actual information used by the parole board in reaching its decisions and (b) the myriad post-decision factors that may influence longer term outcomes. Our model accounted for about a quarter of the variance, which although strong, suggests that other factors are also at play in determining reconviction. Promising post-release candidate variables include the quality of the relationship with the probation officer (Skeem, et al., 2007), relevant characteristics of the family or immediate social support (Bahr, Harris, Fisher, &

Armstrong, 2010), and of the neighborhood (Ostermann & Hyatt, 2016), and dynamic characteristics of offenders themselves, such as their on-going attitudes to desistance, abstinence from drug use, and involvement in enjoyable, positive activities (Bahr et al., 2010).

To reduce complexity, we looked only at one recidivism outcome in this study, which is not the recommended practice (Lösel 2001). We chose reconviction for any new criminal behavior and excluded violations of parole because we thought this definition was closest to the way offenders may think about complete desistance. However, predictors of other recidivism outcomes would also be worthy of examination.

This research raises the possibility that interventions that help offenders prepare for parole should be routinely available to high-risk prisoners, not simply those who are preparing for early release, as was the case until recently in New Zealand. It also suggests that longer parole may be a key tool in reducing recidivism for high-risk offenders. More detailed research on *how* longer parole works and with whom is now highly desirable.

The findings of this study also support the contention that treatment evaluation designs need to factor in the downstream consequences of program involvement (e.g., early parole, longer parole) in order to understand recidivism outcomes. In our view, the failure to consider the role of post-treatment factors in the relationship between custodial program attendance and recidivism may in no small part account for weak or non-existent links between in-program change and recidivism (Serin, Lloyd, Helmus, Derkzen, & Luong, 2013). But just as importantly, multivariate research on the impact of treatment is needed to more completely understand how treatment experiences translate into re-entry and post-treatment life.

In summary, the effects of treatment, and the processes involved in successful re-entry and desistance are complex to investigate. To date very few studies in correctional program evaluation have adopted approaches with the potential to shed light on how treatment works, and how newly-released prisoners survive in the community. The call for greater use of more varied multivariate modeling techniques in our field has been made (Helmus & Babchishin, 2017; Meehan & Stuart, 2007; Walters, 2007, but progress has been slow. The importance of investigations that use these approaches, for everyone from program designers to judges and policy-makers, will hopefully serve as a stimulus for more methodologically sophisticated future research.

References

- Aos, S., Miller, M., & Drake, E. (2006). *Evidence-based adult corrections programs: What works and what does not*. Olympia, WA: Washington State Institute for Public Policy.
- Bahr, S. J., Harris, L., Fisher, J. K., & Armstrong, A. H. (2010). Successful reentry: What differentiates successful and unsuccessful parolees? *International Journal of Offender Therapy and Comparative Criminology*, 54, 667-692.
- Bakker, L., O'Malley, J., & Riley, D. (1998). *Storm warning: Statistical models for predicting violence*. Wellington, NZ: Department of Corrections Psychological Service. Retrieved from <http://www.corrections.govt.nz/resources/storm-warning.html>
- Bakker, L., Riley, D., & O'Malley, J. (1999). *Risk of reconviction: Statistical models predicting four types of re-offending*. Wellington, NZ: Department of Corrections Psychological Service. Retrieved from <http://www.corrections.govt.nz/resources/risk-of-reconviction.html>
- Bonta, J., & Andrews, D. A. (2016). *The psychology of criminal conduct* (6th ed.). London: Routledge.
- Bonta, J., Rugge, T., Scott, T., Bourgon, G., & Yessine, A. (2008). Exploring the black box of community supervision. *Journal of Offender Rehabilitation*, 47, 248-270.
- Braga, A. A., Piehl, A. M., & Hureau, D. (2009). Controlling violent offenders released to the community: An evaluation of the Boston reentry initiative. *Journal of Research in Crime and Delinquency*, 46, 411-436.

- Browne, W. J., & Cudeck, R. (1993). Alternative ways of assessing model fit. In K. A. Bollen & J. S. Long (Eds.), *Testing structural equation models* (pp. 136-162). Newbury Park, CA: Sage.
- Burnett, R. (Ed.) (2009). *Post-corrections reintegration: Prisoner resettlement and desistance from crime* (2 ed.). Devon: Willan.
- Dickson, S. R., Polaschek, D.L.L., & Casey, A. R. (2013). Can the quality of high-risk violent prisoners' release plans predict recidivism following intensive rehabilitation? A comparison with risk assessment instruments. *Psychology, Crime and Law*, *19*, 371-389.
- Dickson, S. R., Polaschek, D.L.L., & Wilson, M. J. (2017). *How do plans enhance desistance? Translating release plans into parole experiences for high risk parolees*. Manuscript under review.
- Duwe, G. (2012). Evaluating the Minnesota Comprehensive Offender Reentry Plan (MCORP): Results from a randomized experiment. *Justice Quarterly*, *29*, 347-383.
- Duwe, G. (2013). *An Evaluation Of The Minnesota Comprehensive Offender Reentry Plan (MCORP): Pilot Project: Final Report*. Minnesota Department of Corrections, St Paul, Minnesota. Retrieved June 25, 2015 from www.doc.state.mn.us/pages/files/8913/8142/3580/MCORP_Evaluation_Final_DOC_Website.pdf
- Galea, S., Riddle, M., & Kaplan, G. A. (2010). Causal thinking and complex system approaches in epidemiology. *International Journal of Epidemiology*, *39*, 97-106.

- Garland, B. E., & Hass, A. Y. (2015). An outcome evaluation of a Midwestern prisoner reentry initiative. *Criminal Justice Policy Review*, 2015, 293-314.
- Gobeil, R., & Serin, R. C. (2009). Preliminary evidence of adaptive decision making techniques used by parole board members. *International Journal of Forensic Mental Health*, 8, 97-104.
- Gobeil, R., & Serin, R. C. (2010). Parole decision-making: Contributions from research. In J. M. Brown & E. A. Campbell (Eds.), *Cambridge Handbook of Forensic Psychology* (pp. 251-258). Cambridge, UK: CUP.
- Gottfredson, M. R., Mitchell-Herzfeld, S. D., & Flanagan, T. J. (1982). Another look at the effectiveness of parole supervision. *Journal of Research in Crime and Delinquency*, 19, 277-298.
- Graffam, J., & Shinkfield, A. (2012). The life conditions of Australian ex-prisoners: An analysis of interpersonal, subsistence, and support conditions. *Journal of Offender Therapy and Comparative Criminology*, 56, 897-916.
- Griffiths, C. T., Dandurand, Y., & Murdoch, D. (2007). *The social reintegration of offenders and crime prevention*. Ottawa: National Crime Prevention Centre. Retrieved from www.publicsafety.gc.ca/cnt/rsrscs/pblctns/scl-rntgrtn/index-eng.aspx
- Helmus, L. M., & Babchishin, K. M. (2017). Introduction to special issue "statistical issues and innovations in predicting recidivism". *Criminal Justice & Behavior*, 44, 5-7.

- Howard, P. D., & Dixon, L. (2013). Identifying change in the likelihood of violent recidivism: Causal dynamic risk factors in the OASys violence predictor. *Law and Human Behavior, 37*, 163-174.
- Kennealy, P. J., Skeem, J. L., Manchak, S. M., & Loudon, J. E. (2012). Firm, fair, caring officer-offender relationships protect against supervision failure. *Law and Human Behavior, 36*, 496-505.
- Kilgour, G., & Polaschek, D. (2012). *Special Treatment Unit Evaluation Project Report, June 2012*. New Zealand Department of Corrections, Wellington, New Zealand (unpublished report).
- Kroner, D. G., & Yessine, A. K. (2013). Changing risk factors that impact recidivism: In search of mechanisms of change. *Law and Human Behavior, 37*, 321-336.
- Landis, J.R., & Koch, G.G. (1977). The measurement of observer agreement for categorical data. *Biometrics, 33*, 159-174.
- Lattimore, P. K., & Visser, C. A. (2013). The impact of prison reentry services on short-term outcomes: Evidence from a multisite evaluation. *Evaluation Review, 37*, 274-313.
- Lewis, K., Olver, M. E., & Wong, S. C. P. (2013). The Violence Risk Scale: Predictive validity and linking treatment changes with recidivism in a sample of high risk and personality disordered offenders. *Assessment, 20*, 150-164.
- Lipsey, M. W., & Cullen, F. T. (2007). The effectiveness of correctional rehabilitation: A review of systematic reviews. *Annual Review of Law and Social Science, 3*, 297-320.

- Lösel, F. (2001). Evaluating the effectiveness of correctional programs: Bridging the gap between research and practice. In G. A. Bernfeld, D. P. Farrington & A. W. Leschied (Eds.), *Offender rehabilitation in practice* (pp. 67-92). Chichester: Wiley.
- Marques, J. K., Wiederanders, M., Day, D. M., Nelson, C., & van Ommeren, A. (2005). Effects of a relapse prevention program on sexual recidivism: Final results from California's sex offender treatment and evaluation project (SOTEP). *Sexual Abuse: A Journal of Research and Treatment, 17*, 79-107.
- Meehan, J.C., & Stuart, G. L. (2007). Using structural equation modeling with forensic samples. *Criminal Justice & Behavior, 34*, 1560-1587.
- Mears, D. P., & Cochran, J. C. (2015). *Prisoner reentry in the era of mass incarceration*. Thousand Oaks, CA: Sage.
- Mooney, J. L., & Daffern, M. (2014). Elucidating the factors that influence parole decision-making and violent offenders' performance on parole. *Psychiatry, Psychology and Law, 21*, 385-405.
- Muthén, L.K. & Muthén, B.O. (1998-2012). *Mplus User's Guide*. (7th ed.). Los Angeles, CA: Muthén & Muthén.
- Nadesu, A. (2007). *Reconviction patterns of released prisoners: A 36-months follow-up analysis*. Wellington, New Zealand: Department of Corrections Policy Development unpublished report. Retrieved from <http://www.corrections.govt.nz/resources/reconviction-patterns-of-released-prisoners-a-36-months-follow-up-analysis.html>

- Ostermann, M. (2013). Active supervision and its impact upon parolee recidivism rates. *Crime & Delinquency*, 59, 489-509.
- Ostermann, M., & Hyatt, J. M. (2016). Is something better than nothing? The effect of short terms of mandatory parole supervision. *Justice Quarterly*, 33, 785-810
- Ostermann, M., Salerno, L. M., & Hyatt, J. M. (2015). How different operationalizations of recidivism impact conclusions of effectiveness of parole supervision. *Journal of Research in Crime and Delinquency*, 52, 771-796.
- Paparozzi, M. A., & Gendreau, P. (2005). An intensive supervision program that worked: Service delivery, professional orientation, and organizational supportiveness. *The Prison Journal*, 85, 445-466.
- Paternoster, R. (2010). How much do we really know about criminal deterrence? *Journal of Criminal Law and Criminology*, 100, 765-823.
- Petersilia, J. (2003). *When prisoners come home: Parole and prisoner reentry*. New York: Oxford University Press.
- Polaschek, D. L. L. (2015, June). *Reintegration, rehabilitation, or both? Unpacking factors that contribute to community outcomes for high risk violent offenders*. Keynote address at the Third North American Corrections and Criminal Justice Psychology Conference, Ottawa, Canada.
- Polaschek, D. L. L., & Kilgour, T. G. (2013). New Zealand's Special Treatment Units: The development and implementation of intensive treatment for high-risk male prisoners. *Psychology, Crime & Law*, 11, 511-526.

- Polaschek, D. L. L., Kilgour, T. G., & Wilson, N. J. (2017). *Pre-release measurement of release plan feasibility: Scale development and predictive validity with high-risk prisoners*. Manuscript under review.
- Polaschek, D. L. L., Yesberg, J. A., Bell, R. K., Casey, A. R., & Dickson, S. R. (2016). Intensive psychological treatment of high-risk violent offenders: Outcomes and pre-release mechanisms. *Psychology, Crime, and Law*, 22, 344-365.
- Polaschek, D.L.L. (2011). High-intensity rehabilitation for violent offenders in New Zealand: Reconviction outcomes for high- and medium-risk prisoners. *Journal of Interpersonal Violence*, 26, 664-682.
- Richards, S. C., & Jones, R. S. (2004). Beating the perpetual incarceration machine: Overcoming structural impediments to re-entry. In S. Maruna & R. Immarigeon (Eds.), *After crime and punishment: Pathways to offender reintegration* (pp. 201-232). Cullompton, UK: Willan.
- Roman, J., Brooks, L., Lagerson, E., Chalfin, A., & Tereschenko, B. (2007). Impact and cost-benefit analysis of the Maryland Reentry Partnership Initiative. Washington DC: Urban Institute. Retrieved 28 May 2014 from <http://www.urban.org/research/publication/impact-and-cost-benefit-analysis-maryland-reentry-partnership-initiative>
- Scanlan, J. M. (2015). *Predicting community recidivism: An evaluation of the Dynamic Risk Assessment for Offender Re-entry (DRAOR) with a sample of community sentenced women and men*. (Unpublished Master's thesis) Victoria University of Wellington, New Zealand.

- Serin, R. C., Lloyd, C. D., Helmus, L., Derkzen, D. M., & Luong, D. (2013). Does intra-individual change predict offender recidivism? Searching for the Holy Grail in assessing offender change. *Aggression & Violent Behavior, 18*, 32-53.
- Skeem, J. L., Eno Loudon, J., Polaschek, D. L. L., & Camp, J. (2007). Assessing relationship quality in mandated community treatment: Blending care with control. *Psychological Assessment, 19*, 397-410.
- Taylor, C. J. (2013). Tolerance of minor setbacks in a challenging reentry experience: A evaluation of a federal reentry court. *Criminal Justice Policy Review, 24*, 49-70.
- Travis, J., & Western, B. (Eds.). (2014). *The growth of incarceration in the United States: Exploring causes and consequences*. Washington, DC: National Academies Press.
- Veysey, B. M., Ostermann, M., & Lanterman, J. L. (2014). The effectiveness of enhanced parole supervision and community services: New Jersey's serious and violent offender reentry initiative. *The Prison Journal, 94*, 435-453.
- Visher, C. A., & Lattimore, P. K. (2007, October). Major study examines prisoners and their reentry needs. *NIJ Journal, 258*, 30-33.
- Visher, C. A., & Travis, J. (2011). Life on the outside: Returning home after incarceration. *The Prison Journal, 91*(3supplement), 102S-119S.
- Vito, G. F., Higgins, G. E., & Tewksbury, R. (2017). The effectiveness of parole supervision: Use of propensity score matching to analyze reincarceration rates in Kentucky. *Criminal Justice Policy Review, 28*, 627-640.

- Walters, G. D. (2007). Using Poisson Class regression to analyze count data in correctional and forensic psychology: A relatively old solution to a relatively new problem. *Criminal Justice & Behavior*, *34*, 1659-1674.
- Wan, W., Poynton, S., Doorn, G. v., & Weatherburn, D. (2014). Parole supervision and reoffending. *Trends and Issues in Crime and Criminal Justice*, *485* (September), 1-7.
- Whitehead, P. R. (2014). Therapeutic communities: From a program in prison to the prison as a program. *Practice—The New Zealand Corrections Journal*, *2*(2), 47-53. Retrieved from <http://www.corrections.govt.nz/resources/journal.html>
- Willis, G. M., & Grace, R. C. (2008). The quality of community reintegration planning for child molesters: Effects on sexual recidivism. *Sexual Abuse: A Journal of Research and Treatment*, *20*, 218-240.
- Willis, G. M., & Grace, R. C. (2009). Assessment of community reintegration planning for sex offenders: Poor planning predicts recidivism. *Criminal Justice and Behavior*, *36*, 494-512.
- Wilson, J. A., & Davis, R. C. (2006). Good intentions meet hard realities: An evaluation of the Project Greenlight reentry program. *Criminology and Public Policy*, *5*, 303-338.
- Wilson, N. J. (2011). *Release proposal feasibility assessment - revised (RPFA-R) manual and rating booklet Version 4*. Department of Corrections. Wellington, New Zealand (unpublished manual).

- Wolff, N., Shi, J., & Schumann, B. E. (2012). Reentry preparedness among soon-to-be-released inmates and the role of time served. *Journal of Criminal Justice, 40*, 379-385.
- Wong, S., & Gordon, A. (2000). *Violence Risk Scale*: University of Saskatchewan, Canada (unpublished manual).
- Wong, S., & Gordon, A. (2006). The validity and reliability of the Violence Risk Scale: A treatment-friendly violence risk assessment tool. *Psychology, Public Policy, and Law, 12*, 279-309.
- Wong, S., & Gordon, A. (2013). The Violence Reduction Program: A treatment program for violence prone forensic clients. *Psychology, Crime & Law, 11*, 461-475.
- Yesberg, J. A., & Polaschek, D. L. L. (2014). Using information from the Violence Risk Scale to understand different patterns of treatment response: Implications for the management of intensively treated life-sentenced prisoners. *Journal of Interpersonal Violence, 29*, 2991-3013.
- Yesberg, J. A., & Polaschek, D. L. L. (2017). *Does change continue after psychological treatment? Comparing patterns of change on dynamic risk and protective factors for high-risk offenders on parole*. Manuscript under review.
- Zhang, S. X., Roberts, R. E. L., & Callanan, V. J. (2006). Preventing parolees from returning to prison through community-based reintegration. *Crime & Delinquency, 52*, 551-571.

Endnotes

¹ See Introduction for typical reasons for why they were not referred. Although they were eligible for referral “on paper” some declined to be referred, while others informed us they were never advised about the program.

² The effectiveness of individual psychological treatment is currently unknown. Department of Corrections Annual Reports show that the next three types of programs—substance dependency, medium intensity rehabilitation, and short motivational interventions (all provided by non-psychologists)—yielded absolute differences in reimprisonment rates compared to untreated offenders of between 0 and 7% during the timespan of this study (see <http://www.corrections.govt.nz/resources/annual-reports5.html>)

³ The design is thus quasi-experimental, using statistical methods to control for differences between the two samples. Random allocation of high-risk violent offenders to an untreated or less treated condition after they consent to more effective treatment is never likely to be ethically acceptable in this jurisdiction, and even were it possible, subsequent selective attrition within the intensive treatment condition could still be expected to result in non-equivalent groups (see for example, Marques, Wiederanders, Day, Nelson, & van Ommeren, 2005).

⁴ Some items are scored highly simply because they are characteristic of the offender (e.g., impulsivity), but others that may be strongly characteristic, require a functional link to violence in order to be scored highly (e.g., alcohol use).

⁵ Initially, we examined whether we could control for any expected differences between the two samples using propensity scores. However, the resulting regression equation

using these and other similar demographic and criminal history variables was non-significant: reflecting statistical equivalence.

Table 1
Means and standard deviations (or percentages) and statistical comparisons for sample descriptors

	Combined <i>n</i> = 271	Treatment <i>n</i> = 120	Comparison <i>n</i> = 151	<i>t</i> (<i>p</i>)	<i>d</i>
Age first conviction	16.1 (8.1)	16.0 (2.2)	16.2 (1.6)	0.71 (.47)	0.10
Age first violent conviction ^a	18.8 (3.7)	18.8 (3.9)	18.7 (3.5)	0.16 (.87)	0.03
Number previous convictions	69.9 (52.3)	69.80 (55.0)	70.0 (50.2)	0.04 (.97)	0.003
Number previous violent convictions	4.8 (4.3)	4.8 (4.1)	4.8 (4.5)	0.14 (.87)	0.00
Static imprisonment risk (RoC*RoI)	.74 (11)	0.74 (0.13)	0.74 (0.09)	0.41 (.69)	0.00
Prison sentence given (days)	1402 (945)	1578 (958)	1262 (914)	2.80 (.006)	0.34
Days served in prison	1217 (839)	1271 (799)	1173 (869)	0.95 (.34)	0.12
Age at parole	31.4 (8.1)	32.1 (7.9)	30.8 (8.3)	1.40 (.17)	0.16
Dynamic risk of violence (VRS dynamic)	39.8 (7.1)	37.6 (6.8)	41.6 (6.9)	4.80 (.001)	0.59
Readiness for release (RPFA-R)	13.1 (3.9)	12.4 (4.1)	13.6 (3.7)	2.60 (.01)	0.31
Parole length (days) ^b	328 (214)	413 (238)	260 (165)	6.00 (.001)	0.75
				χ^2 (<i>p</i>)	Cramer's <i>V</i> / Φ
Ethnicity ^d					
NZ Māori	67%	66	67	7.9 (.72)	0.17
Pasifika ^c	5%	5%	5		
NZ European/Pākehā	28%	29%	26%		
Other	1%	0	1		
Released before end of sentence	46%	82%	32%	66.9 (.001)	0.50

^aFor those with violent convictions: *n* = 112 (93%) treatment sample, *n* = 127 (84%) comparison sample

^bTransformed variable used in all analyses. Untransformed means are reported here for interpretability.

^cIncluding Samoan, Tongan, and Fijian nationals, and Cook Island Māori

^dTotal exceeds 100 due to rounding

Table 2.
Percentage reconvicted within 12 months of release from prison

	Combined sample	Treatment	Comparison	X^2	Φ	95% CI (Φ)
Parole violation	42.8	34.2	49.7	6.56 ^b	0.16	.03, .28
Any ^a	60.5	54.2	65.6	3.63 ^c	0.12	.01, .24
Violent	19.6	14.2	23.8	3.98 ^d	0.12	.01, .23
Reimprisonment	42.1	31.7	50.3	9.56 ^c	0.19	.06, .31

^aexcludes parole violations; 70% of the sample were reconvicted for any new offense when parole violations are included as the first reconviction.

^b $p = .010$, ^c $p = .057$, ^d $p = .046$, ^e $p = .002$

Table 3.
Pearson correlations for combined, treatment and comparison samples, for predictors and recidivism

	VRS dynamic	RPFA-R	Length of Parole	RoC*RoI	Reconviction
RPFA-R	.55**				
Treatment	.54**				
Comparison	.56**				
Length of parole	-.35**	-.33**			
Treatment	-.34**	-.27**			
Comparison	-.23**	-.35**			
Roc*RoI	.11	.13*	-.16**		
Treatment	.13	.15	-.13		
Comparison	.13	.13	-.25**		
Reconviction	.05	.13*	-.28**	.19**	
Treatment	.10	.17*	-.29**	.22**	
Comparison	.02	.11	-.22**	.17*	
Treatment status	.28**	.15**	-.45**	.03	.17 ⁺

* $p \leq .05$; ** $p \leq .01$; + $p = .057$

Table 4.
Standardized coefficients and standard errors for indirect pathways tested in best-fitting model for reconviction (Figure 2)

Indirect pathway	β	SE	p	95% CI
Treatment status → parole length → reconviction	.29	.07	< .01	0.14, 0.44
Release readiness → parole length → reconviction	.08	.03	< .01	0.02, 0.15
Treatment status → Dynamic risk → Release readiness → parole length	-.07	.03	< .01	-0.12, -0.02
Treatment status → Dynamic risk → Release readiness → parole length → reconviction	.03	.01	.022	0.001, 0.05

Note. Bias-corrected bootstrapped 95% confidence intervals are reported.

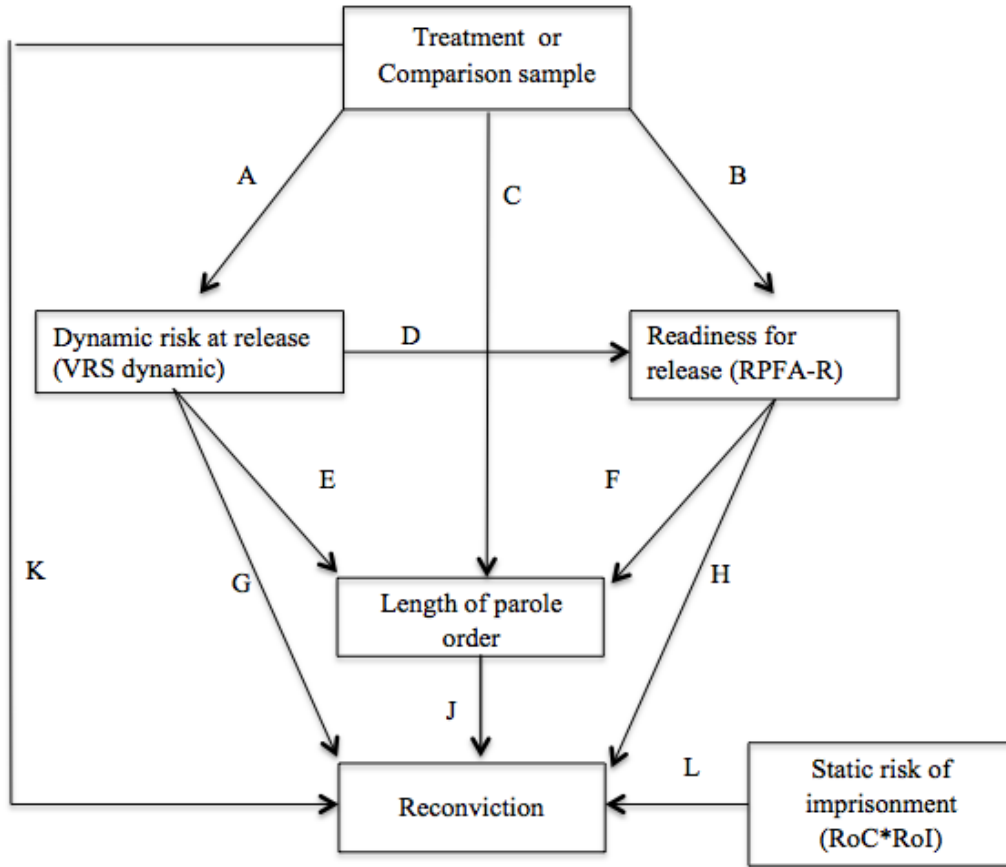


Figure 1
 Baseline model examining impact of treatment, violence risk, release readiness and length of parole order, on reconviction

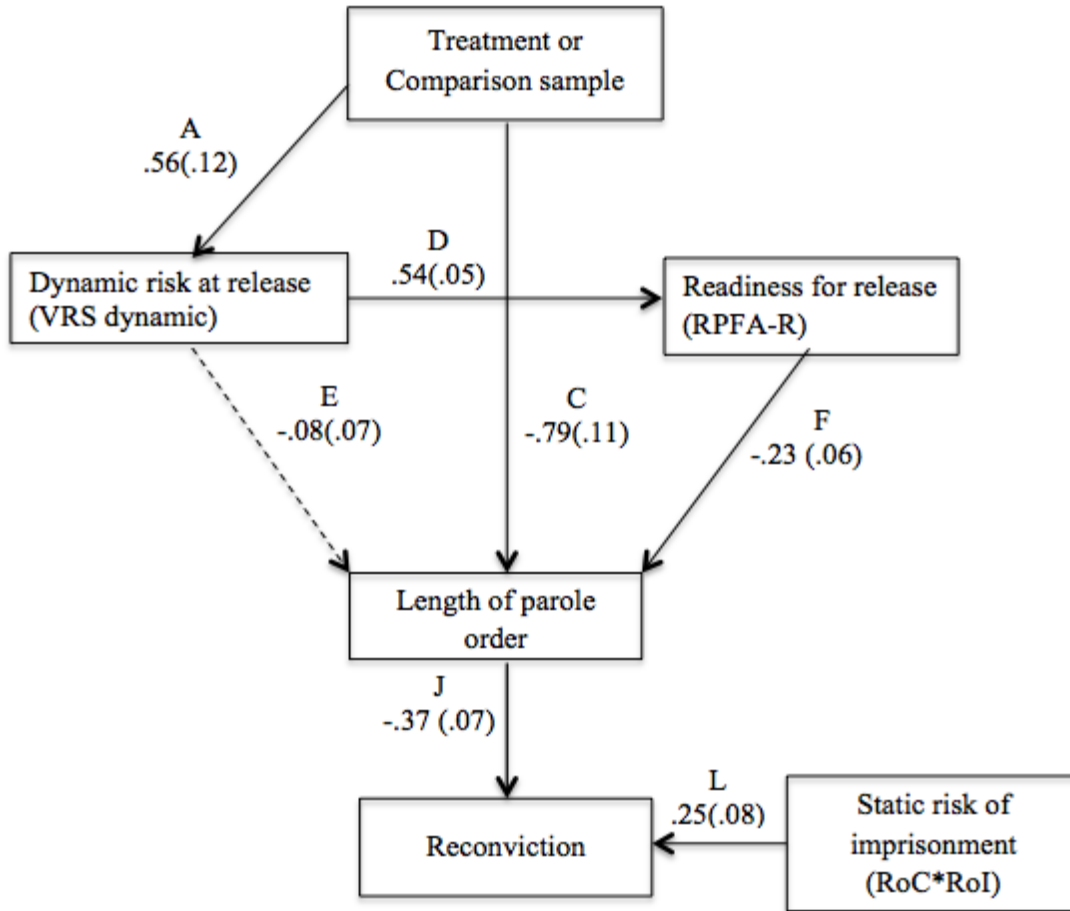


Figure 2

Standardized coefficients (and standard errors) for the best-fitting model for examining relationships between HRSTU treatment, dynamic violence risk, release readiness, length of parole, static imprisonment risk and any new conviction.

Note. Treatment status (i.e., Treatment or Comparison sample) was coded 1 = HRSTU treatment, 2 = Comparison.