

Review Article

Abnormalities in Glutamate Metabolism and Excitotoxicity in the Retinal Diseases

Makoto Ishikawa

Department of Ophthalmology, Akita Graduate University Faculty of Medicine, 1-1-1 Hondo, Akita 010-8543, Japan

Correspondence should be addressed to Makoto Ishikawa; mako@med.akita-u.ac.jp

Received 10 October 2013; Accepted 17 November 2013

Academic Editors: M. Hamann, M. Milanese, M. J. Seiler, and L. Tremolizzo

Copyright © 2013 Makoto Ishikawa. This is an open access article distributed under the Creative Commons Attribution License, which permits unrestricted use, distribution, and reproduction in any medium, provided the original work is properly cited.

In the physiological condition, glutamate acts as an excitatory neurotransmitter in the retina. However, excessive glutamate can be toxic to retinal neurons by overstimulation of the glutamate receptors. Glutamate excess is primarily attributed to perturbation in the homeostasis of the glutamate metabolism. Major pathway of glutamate metabolism consists of glutamate uptake by glutamate transporters followed by enzymatic conversion of glutamate to nontoxic glutamine by glutamine synthetase. Glutamate metabolism requires energy supply, and the energy loss inhibits the functions of both glutamate transporters and glutamine synthetase. In this review, we describe the present knowledge concerning the retinal glutamate metabolism under the physiological and pathological conditions.

1. Introduction

Glutamate is the most prevalent neurotransmitter in the visual pathway including the retina [1–3]. After release from the presynaptic neural terminal, glutamate binds to the postsynaptic glutamate receptors, inducing the influx of Na^+ and Ca^{2+} , resulting in membrane depolarization. When glutamate is in excess, it can become toxic to retinal neurons by overstimulation of the glutamate receptors [4–7]. In as early as 1957, Lucas and Newhouse [4] reported that subcutaneous administration of sodium L-glutamate induced necrosis in the inner retina of albino mice within a few hours of injection, indicating that high concentrations of glutamate cause retinal cell death. Therefore, efficient removal of glutamate from the extracellular space is critical for maintenance of retinal function and preventing the retinal neurons against glutamate toxicity (Figure 1).

Glutamate is metabolized by two major processes: its uptake and the subsequent enzymatic degradation. Derouiche and Rauen (1995) [8] have shown that glutamate is degraded into nontoxic glutamine by glutamine synthetase, following uptake by major glutamate transporter, GLAST, into Müller cells. A prerequisite for an effective glutamate-glutamine cycle in glial cells is the regulated coordination between glutamate uptake and glutamate degradation [9].

Although glutamate is considered as a potent exotoxin, exogenous glutamate is only weakly toxic to the retina when glutamate transporters on Müller glial cells are operational [10]. When glutamate transporter is pharmacologically blocked, inner retinal neurons are exposed by a higher amount of endogenous glutamate, resulting in severe excitotoxic degeneration [10]. These observations suggest that glutamate is neurotoxic when the uptake system is impaired rather than when the release is excessive.

The first part of this article surveys physiology of glutamate metabolism with particular interest in glutamate transporters (GLAST, GLT-1, EAAC-1), glutamine synthetase, and energy supply. The second part describes excitotoxic retinal degeneration induced by abnormalities of glutamate metabolism in the retinal ischemia, glaucoma, and diabetic retinopathy.

2. Glutamate Metabolism in the Physiological Condition

2.1. Glutamate Uptake by Glutamate Transporters. All neuronal and glial cells in the retina express high-affinity glutamate transporters [9]. At least five glutamate transporters have been cloned: GLAST (EAAT1), GLT-1 (EAAT2) [11, 12],

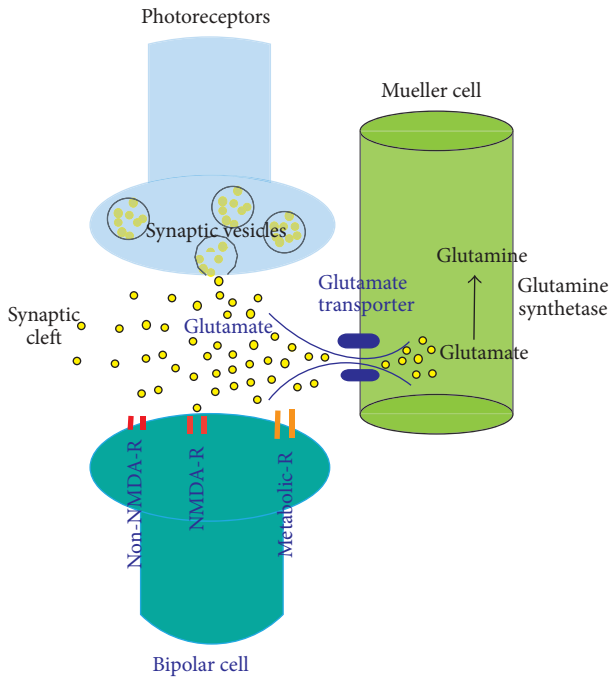


FIGURE 1: Glutamatergic synaptic transduction and uptake and metabolism of glutamate in the Müller cell. The photoreceptor cell synthesizes glutamate, which is continuously released during darkness. Glutamate released from the synaptic terminal reaches to the postsynaptic receptors of bipolar cell dendrites, then is promptly taken up from the synaptic cleft. The glutamate transporters are the predominant mechanism for uptake of glutamate in the Müller cell, and maintain the proper concentration of this potentially excitotoxic amino acid. Glutamate transported into the Müller cell is degraded to glutamine by glutamine synthetase.

EAAC-1 (EAAT3) [13], EAAT4 [14], and EAAT5 [15]. In the retina, four out of the five known EAATs have been described. Immunohistochemical analysis localize the distributions of these glutamate transporters, respectively, [16, 17]. GLAST is distributed in the Müller glial cells. GLT-1 and EAAT5 are colocalized in the photoreceptor cells and the bipolar cells. EAAC-1 (EAAT3) is localized in the horizontal cells, ganglion cells, and some amacrine cells.

Since glutamate is a potent neurotoxin, the functional role of glutamate transporters is critical to prevent the retinal excitotoxicity. Izumi et al. [10] reported the pharmacological blockade of glutamate transporters using TBOA (DL-threo- β -benzyloxyaspartate) [18–20]. TBOA is an inhibitor of all types of glutamate transporters, and does not evoke currents in neurons or glial cells. Izumi et al. [10] used TBOA alone and in combination with exogenous glutamate to examine the role of glial glutamate transporters in excitotoxic retinal degeneration. In the presence of TBOA, the potency of glutamate as a neurotoxin is greatly enhanced. Surprisingly, TBOA alone is neurotoxic, and the toxicity is inhibited by a combination of ionotropic NMDA and non-NMDA receptor antagonists, suggesting that the damage is excitotoxicity. Furthermore, TBOA-induced neuronal damage is inhibited by the glutamate release inhibitor, riluzole, suggesting that the

damage is mediated by endogenous glutamate, rather than resulted from a direct action of TBOA. These results strongly suggest that the neurotoxic actions of TBOA result from blocking glutamate transport, and pathological conditions or treatments that impair glial glutamate transport greatly augment the toxic effects of endogenous glutamate.

Recently, antisense knockout techniques or the construction of transgenic and gene knockout mouse models represent the successful approach to achieving suppression or elimination of a genetic message of specific glutamate transporters. In this section, we describe the characterization of these three glutamate transporter precisely based on the experimental results mainly obtained by gene engineering.

2.1.1. GLAST. GLAST is the prominent glutamate transporter in the retina, and mainly expressed in the Müller cells [1, 8, 21–24]. In the mouse Müller cells, glutamate removal by GLAST is calculated as 50% among the retinal glutamate transporters [25]. Glutamate uptake via GLAST is accompanied by cotransport of three Na^+ and one H^+ , and the countertransport of one K^+ at each glutamate transport. Sodium ions are extruded, at least in part, by Na^+/K^+ -adenosine triphosphate (ATP) use in a reaction that consumes ATP.

To elucidate the role of GLAST in the regulation of retinal function, Harada et al. [26] developed GLAST-deficient mice, and revealed reduction of the scotopic ERG b-wave, indicating the reduction of glutamate-mediated neurotransmission activity in the retina. After induction of the retinal ischemia by increasing intraocular pressure above systolic pressure for 60 min, more severe excitotoxic degeneration is found in GLAST-deficient mice than in wild-type, indicating that GLAST is neuroprotective against ischemia [27].

Barnett and Pow [28] injected intravitreally antisense oligonucleotides to GLAST into rat eyes. Although a marked reduction of GLAST activity was detected, the retinas displayed no evidence of excitotoxic neuronal degeneration, and the distribution of glutamate was unaffected by antisense treatment. Significant inhibition in GLAST function was apparent 5 days after injection of antisense oligonucleotide and was sustained for at least 20 days. The observed lack of neuronal degeneration suggests that reduced glutamate uptake into the Müller cells does not cause excitotoxic tissue damage.

However, Harada et al. [29] examined the long-term effect (32 weeks) of GLAST deficiency on the retinal morphology during postnatal development *in vivo*, and revealed spontaneous loss of retinal ganglion cell (RGC) and optic nerve degeneration without elevated intraocular pressure (IOP). In GLAST-deficient mice, administration of glutamate receptor antagonist prevented RGC loss. These findings suggest that GLAST is necessary to prevent retinal excitotoxicity.

Taken together, the glutamate removal by glutamate transporters is prerequisite for the maintenance of normal retinal transmission, and preventive against excitotoxicity.

2.1.2. GLT-1. Unlike in the central nervous system [30], it is considered that GLT-1 does not play a predominant role in the physiological glutamate transmission in the retina because

antisense GLT-1-knockout mice exhibit almost normal retinal function [24, 30]. However, other researchers reported that treatment with antisense oligonucleotides against GLT-1 increased vitreal glutamate levels leading to ganglion cell death in the rat retina [31], and the retinal damage induced by ischemia was exacerbated in GLT-1 deficient mice [26]. Harada et al. [29] tried to examine the long-term effect of GLT-1 deficiency on the retinal morphology during postnatal development *in vivo*. However, almost all of GLT-1^{-/-} mice died within 3 weeks. There seems to be no difference in RGC number between GLT-1^{+/-} mice and wild-type mice.

Despite these contradictory findings, the involvement of GLT-1 of the retina in the homeostasis of glutamate cannot be excluded.

2.1.3. Splice Variants of Glutamate Transporters. Splice variant is a result of alternative splicing of pre-mRNA where the exons are reattached in a different manner to produce different mRNAs [32]. Alternative splicing occurs in 95% of multiexonic genes [33]. Splice variants are translated from alternatively spliced mRNAs that contain diversities in amino acid sequence or biological properties.

(a) *GLAST*. The presence of three types of splice variants of GLAST (GLAST1a, GLAST1b, and GLAST1c) has been reported. GLAST1a and GLAST1b lack exon 3 and 9, respectively [34, 35]. GLAST1a preferentially located in the endfeet of the Müller cells. The localization of GLAST1a is different from normally expressed GLAST, which is entirely expressed in the Müller cell body [34]. However, the clarification of the precise role of GLAST1a in the retina is still remained. GLAST1b is expressed at low levels in neurons in the normal brain, while expression levels rise dramatically in neurons after a hypoxic insult, indicating that expression is regulated to maintain the homeostasis of the glutamate concentration [36]. GLAST1c lacks both exon 5 and 6 and coded for a 430 amino acid protein, [37]. GLAST1c is present in multiple species and is widely expressed by astroglial cells and oligodendrocytes in the brains of various mammalian species as well as in the optic nerve and the retinas of human. Similarities between GLAST1c and a functional prototypic transporter may support the speculation that GLAST1c is a functional glutamate transporter, and possibly represents a primitive form of GLAST. However, the precise localization of GLAST1c in the retina has not been identified.

(b) *GLT-1*. GLT-1 (EAAT2) exists in several distinct forms, including the originally described form (GLT-1a), along with GLT-1b (also called GLT1v) and GLT1c [38]. GLT-1a appears to be associated mainly with a population of amacrine cells, whereas GLT-1b is associated with cone photoreceptors, subpopulations of bipolar cells, and astrocytes [39, 40]. GLT-1c is normally only expressed by the photoreceptors in the mammalian retina [38]. In the rat, GLT1c is colocalized with GLT1b in cone photoreceptors. GLT1c expression is developmentally regulated, only appearing at around postnatal day 7 in the rat retina, when photoreceptors first exhibit a dark current [41]. In the normal eyes of humans and rats, GLT-1c was expressed only in photoreceptors. In glaucoma, there

was an apparent increase in expression of GLT-1c in retinal ganglion cells, including occasional displaced ganglion cells. Although the precise role of GLT-1c still remains to be elucidated, upregulation of GLT-1c might be an attempt to adapt to the pathological condition such as glaucoma.

Based on these findings, transcriptional regulation and mRNA splicing causing differential expression of GLAST or GLT-1 may affect glutamate transport and may provide an complicated mechanism for glutamate uptake.

(c) *EAAC-1*. EAAT3 is also known as excitatory amino acid carrier 1 (EAAC-1). EAAC-1 localizes in the synaptic layers (the outer and inner plexiform layers), horizontal cells, subgroups of amacrine cell, and the ganglion cell. In addition, immunoreactivity reveals the presence of EAAC-1-positive amacrine cells distant from the synaptic sites. Considering the location, EAAC-1 may regulate glutamate uptake in different manner both near and well away from synaptic sites. However, knockdown of the expression of GLAST or GLT-1 in rats using antisense oligonucleotides increased the extracellular glutamate concentration, whereas EAAC-1 knockdown mice showed no increase in extracellular glutamate [42]. These findings indicate that glutamate uptake is not a major role of EAAC1. EAAC-1 can transport cysteine significantly higher than GLAST or GLT-1 [43] and contribute to generate glutathione. Partial knock-down of EAAC-1 decreases the neuronal glutathione contents and increases oxidant levels [44]. These results indicate that EAAC-1 is responsible for the metabolism of glutathione, which plays a critical role as an antioxidant.

2.2. Glutamate Degradation by Glutamine Synthetase. Glutamine synthetase is the only enzyme to synthesize glutamine, and plays an important role in glutamate detoxification [45]. Glutamine synthetase seems critical for the cell survival, because the deficiency in the glutamine synthetase gene induces early embryonic death [46].

In the retina, glutamine synthetase is specifically localized in the Müller cells [47], and catalyzes the ATP-dependent condensation of glutamate [48]. In salamander retina, glutamine synthesis stimulates glial glycolysis to match energy demands [49]. Additionally, glutamine synthetase activity is most prominent in the presence of high levels of ammonia, and is more limited in the presence of low levels of ammonia [49]. Immunohistochemistry revealed that inhibition of glutamine synthetase by d,l-methionine,l-sulfoximine (MSO) caused a dramatic increase in the glutamate level in the Müller cells, and subsequently the rapid loss of the glutamate content of the photoreceptor cells, bipolar cells, and ganglion cells [8]. Barnett et al. [50] injected MSO intraocularly in Wistar rats, and revealed prompt suppression of the scotopic ERG b-wave, indicating the reduction of glutamatergic neurotransmission activity in the retina. These results also indicate that inhibition of glutamine synthetase may rapidly impair the retinal response to light.

2.3. Importance of Energy Supply in Glutamate Metabolism. Glutamate uptake can be influenced by changes in cellular

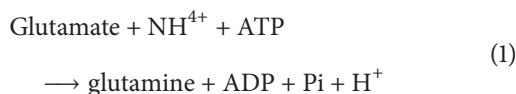
energy levels [51, 52]. ATP is the usable form of chemical energy for the central nervous system including the retina. ATP is provided by two different sources: oxidative metabolism and glycolysis. The generation of ATP through oxidative metabolism (oxidative ATP) is selectively blocked by oxygen deprivation. The generation of ATP through glycolysis (glycolytic ATP) is not blocked by glucose deprivation, as long as glycogen stores are available for use. Iodoacetate (IA) inhibits both oxidative and glycolytic ATP generation.

Oxygen deprivation produces little morphological change and does not induce glutamate-induced excitotoxicity. In contrast, inhibition of glycolysis by IA produced severe neuronal damage. The neuronal damage produced by IA was inhibited by pyruvate, a substrate that sustains oxidative energy pathways. In the presence of IA plus pyruvate, glutamate became neurotoxic at low concentrations through activation of non-NMDA receptors [53]. These results indicate that glycolytic energy metabolism plays a critical role in sustaining ionic balances that one required for Müller cell glutamate uptake, and glial uptake helps to prevent glutamate-mediated excitotoxicity.

Even in the presence of normal energy metabolism, however, ATP levels will be depressed when ATP consumption exceeds production. Thus, excessive neuronal activity and energy demands may acutely reduce ATP levels. Energy failure increases vulnerabilities of retinal neurons to excitotoxicity, because the critical steps in glutamate metabolism are ATP-dependent. In this section, we give an overview of the relations between the energy supply and the glutamate metabolism.

2.3.1. Glutamate Transporters. Although glutamate uptake by glutamate transporters does not require ATP consumption, Glutamate transport is the Na^+ -dependent glutamate transporters, which utilize ionic gradients of Na^+ , K^+ , and H^+ to drive glutamate transport against the concentration gradient. Since the ionic gradients are maintained by the sodium pump, they are dependent upon ATP production. When ATP levels drop, increased extracellular K^+ and reduced extracellular Na^+ result in a neurotoxic release of glutamate, and are attributed to reversed operation of glutamate transporters [54]. Reversal of the glutamate transporter is considered to facilitate the increase of extracellular glutamate concentration to excitotoxic levels. These findings also indicate that the glutamate transporter may transport glutamate in either direction depending on the ionic gradient across the plasma membrane.

2.3.2. Glutamine Synthetase. Degradation of glutamate by glutamine synthetase also consumes ATP molecule as in the following reaction:



in the presence of manganese or magnesium. Therefore, the suppression of intracellular ATP causes a decrease in glutamine synthetase activity.

GLAST and glutamine synthetase are the primary role players that transport glutamate into the Müller cell and convert it into glutamine. Jablonski et al. [55] reported the genetic regulation of both genes *Slc1a3* and *Glul* using an array of 75 recombinant inbred strains of mice. *Slc1a3* and *Glul* encode GLAST and glutamine synthetase, respectively. Interestingly, despite their independent regulation, gene ontology analysis of tightly correlated genes reveals that the enriched and statistically significant molecular function categories of both directed acyclic graphs have substantial overlap, indicating that the shared functions of the correlates of *Slc1a3* and *Glul* include production and usage of adenosine triphosphate (ATP). These results indicate that ATP depletion may induce excitotoxicity via downregulation of *Slc1a3* and *Glul*. Consistently, it has been reported that energy deprivation decreases glutamate uptake within 2-3 min [56].

In addition to the suppression on the glutamate transporters and glutamine synthetase, ATP depletion also induces the failures in membranous Na^+/K^+ pump maintaining the resting membrane potential, or in Ca^{2+} extrusion. Intracellular calcium increase leads to mitochondrial impairment, further accelerating ATP depletion [57]. Recently, Nguyen et al. propose a vicious cycle involving excitotoxicity, oxidative stress, and mitochondrial dynamics. Oxidative stress produced by mitochondrial impairment leads to the upregulation of the NMDA receptors, and exaggerates the excitotoxicity [58].

3. Abnormalities of Glutamate Metabolism

Excitotoxicity has been considered to be involved in several ocular pathologies including ischemia induced by retinal or choroidal vessel occlusion, glaucoma, and diabetic retinopathy [1-7]. Inhibition of retinal degeneration afforded by administration with glutamate receptor antagonists supports this hypothesis [1, 3, 8, 9, 59, 60].

Excitotoxic cell death does not always result from excess of glutamate. Extracellular levels of glutamate achieved during retinal ischemia [61-63] may not be sufficient to induce neuronal damage under normal conditions [64]. This suggests that clearance of glutamate is important in preventing retinal excitotoxicity in response to glutamate. In support of this, it has been shown that retinas of GLAST deficiency mice are extremely sensitive to the ischemic insults [26].

In this section, we describe the abnormalities of glutamate mechanisms in retinal ischemia, glaucoma, and diabetic retinopathy, respectively.

3.1. Retinal Ischemia. In general, ischemia means the pathological conditions with a restriction in blood flow, causing an inadequate supply of oxygen and glucose needed for cellular metabolism. In consequence, the prolonged retinal ischemia induces irreversible morphological and functional changes. For example, the experimental obstruction of the central retinal artery of old, atherosclerotic, hypertensive rhesus monkeys induced no remarkable changes within 97 min, while the longer the arterial obstruction, the more extensive the retinal damage [65].

Acute retinal ischemia induces irreversible damages as the consequence of ATP depletion [66–68]. ATP depletion lowers the function of $\text{Na}^+ - \text{K}^+$ -ATP pump, resulting in influx of Na^+ , Cl^- , and water, which can cause hypo-osmotic swelling of cell organelles and their dysfunction [69]. Reperfusion after ischemia has been known to induce more exaggerated retinal degeneration. The cessation of oxygen and nutrients supply during ischemia increases the susceptibility of the retina for inflammation [70] or the oxidative stress induced by the restoration of blood circulation. Excitotoxicity is considered as one of the essential elements to trigger the above-mentioned ischemia/reperfusion degeneration [71].

3.1.1. Glutamate Transporters. In the retinal ischemia, the expressional and functional changes of glutamate transporters have been reported. Barnett et al. [72] have reported that GLAST functions are reduced after retinal ischemia was induced by the central retinal artery occlusion for 60 min, while the GLAST expression appears to be normal. Decrease in glutamate uptake by GLAST may induce diffusion of glutamate into vitreous cavity or anterior chambers. In consistence, it is reported that glutamate concentration significantly increased in aqueous humor sample obtained from patients with retinal artery obstruction [73].

The ischemia/reperfusion model revealed a marked increase in GLAST mRNA expression in the inner retina [74]. By contrast, Barnett and Grozdanic [75] reported that the GLAST function recovers rapidly upon reperfusion, and suggest that the loss of transporter function might be due to acute metabolic changes induced by the ischemia [76–78], rather than rapid downregulation of transporter gene expression.

Recently, Russo et al. [79] evaluated the expression of GLAST and GLT-1 in a rat ischemia/reperfusion model. They reported that there were no remarkable changes in GLAST expression, while modulation of GLT-1 expression was observed in the isolated retinal synaptosomes. These results support a role for GLT-1 in glutamate accumulation observed in the retina following an ischemic event.

Despite of discrepancies, these findings suggest that glutamate transporters play an important role in the regulation of extracellular glutamate concentration under ischemic conditions.

3.1.2. Glutamine Synthetase. As glutamine synthetase consumes ATP to convert glutamate to glutamine [80], it seems plausible that ATP suppression in the ischemic retina [21] promptly induces the impairment of delegation of glutamate, resulting in the elevation of the extracellular concentration of glutamate. However, glutamine synthetase activity was relatively well preserved during 60 minutes of simulated acute retinal ischemia induced by deprivation of both oxygen and glucose using *ex vivo* rat retinal preparation [21]. Such results indicate that the retina can efficiently generate ATP from glycolysis despite of the deprivation of oxygen and glucose [81]. In ischemia/reperfusion rat eyes, it actually takes

several days to induce a significant depression of glutamine synthetase after the onset of the retinal ischemia [82–84].

The response of the retina to a postischemic reperfusion phase seems to depend upon the intensity of the ischemic stress. The other researcher reported that the expression in glutamine synthetase in Müller cells increased at 6 hours after ischemia reached its peak at 24 hours and decreased on day 14 compared with normal level in the ischemia/reperfusion model [85].

It is considered that glutamine synthetase activity may be upregulated for a short period after onset of ischemia to protect retinal neurons against excitotoxicity. As the rates of glycolysis decrease according to the depletion of glycogen storage, an intracellular ATP level falls, causing inhibition of glutamine synthetase. In addition, it is plausible that ischemia induced upregulation of protein kinase C delta, resulting in the downregulation of glutamine synthetase [86].

3.2. Glaucoma. Glaucoma is characterized by progressive and accelerated loss of retinal ganglion cells and their axons. The prominent pathological finding in glaucoma is the apoptotic cell death of the RGC [87]. However, the pathogenesis of apoptotic RGC death in glaucoma has not been clarified. It is hypothesized that glutamate-mediated excitotoxicity may contribute to pathogenesis of glaucoma [88]. Although an elevation of glutamate concentration in the vitreous humor was reported [89, 90], the following studies could not reproduce these results [91–94]. However, an elevation in the glutamate level in the vitreous humor is not necessary to induce excitotoxicity in the experimental animals or humans with glaucoma [95, 96]. It is because glutamate increase is likely to occur only in localized areas of the retina or optic nerve at any one time during glaucomatous neurodegeneration. If this is true, abnormalities in the glutamate metabolism result in excitotoxic damage to the RGC and contribute to the pathophysiology of glaucoma.

3.2.1. Glutamate Transporters. Glutamate transporters are critical for maintaining optimal extracellular concentrations of glutamate [4, 5, 59, 97, 98]. Since glutamate transport is the only mechanism for removing glutamate from the extracellular fluid, it is hypothesized that functional impairment of glutamate transporters may play a major role in excitotoxicity and contribute to the pathogenesis of glaucoma [99, 100]. Changes of GLAST, GLT-1, and its splice variant, and ECCA-1 have been reported in glaucoma.

GLAST. GLAST is the major glutamate transporter expressed in retinal Müller cells [48]. However, the expressional changes of GLAST in glaucoma are still controversial. Some studies have shown that GLAST expression diminishes [99–101] or remains stable [102] in experimental glaucoma, whereas others have reported an increased expression [103]. In this section, I will overview the role of GLAST in the pressure-dependent and the pressure-independent glaucoma models.

(a) Pressure-Dependent Glaucomatous Changes with GLAST. It is generally recognized that elevated intraocular pressure

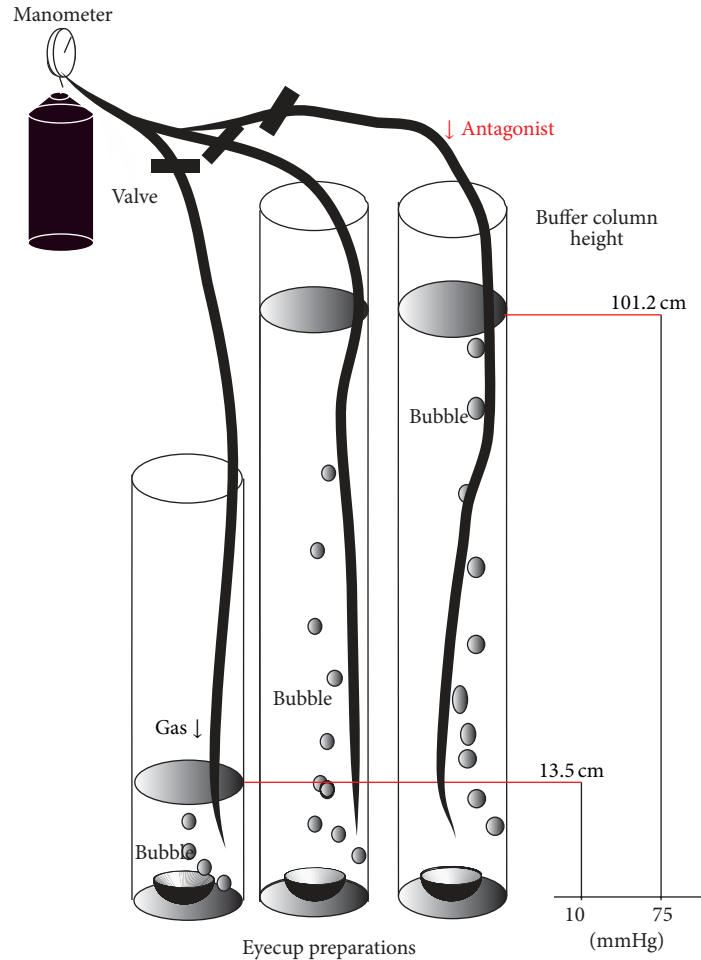


FIGURE 2: Outline of the present experiments. Eyecups preparations were sunken to the bottom of a glass cylinder with different heights. Each glass cylinder was filled with incubation buffer at 30°C for 24 hours. The buffer was bubbled with 95% O₂-5% CO₂. Hydrostatic pressure at the bottom of the cylinder was calculated to be 10 mmHg and 75 mmHg when a CSF was added to a height of 13.5 cm and 101.2 cm, respectively. Glutamate receptor antagonists or agonists were added to the buffer during some experiments.

is the most significant risk factor for accelerated ganglion cell death in glaucoma. However, the mechanism of cellular damage caused by elevated IOP is still unknown.

It has been reported that GLAST expression is reduced in experimental glaucoma models of rat [100] and mouse [101], as well as in glaucoma patients [99]. By contrast, there is another report that GLAST expression increased time-dependently in a rat glaucoma model [103]. These discrepancies might be mainly caused by the differences in the antibodies and glaucoma model.

We recently developed a rat *ex vivo* hydropressure model (Figure 2) to examine the expressional changes of GLAST induced by elevated pressure (75 mmHg) for 24 hours [104]. Such acute high pressures can induce retinal ischemia clinically and in *in vivo* glaucoma models [105–107]. The *ex vivo* hydrostatic pressure model takes advantages to exclude the effects of ischemia, and could investigate direct the effects of pressure-induced retinal injury on glutamate metabolism (Figure 3). In this acute model, Western blot and real-time RT-PCR analyses revealed that 75 mmHg pressure inhibited GLAST expression [104].

(b) *Pressure-Independent Glaucomatous Changes with GLAST*. The population-based study revealed that the normal-tension glaucoma is the most prevalent form of glaucoma in Japan. Moreover, in some glaucoma patients, significant IOP reduction does not prevent the progression of the disease. Harada et al. [29] show that GLAST deficient mice demonstrate spontaneous ganglion cell death and optic nerve degeneration without elevated IOP. In GLAST-deficient mice, administration of glutamate receptor blocker prevented RGC loss, indicating that GLAST is necessary to prevent excitotoxic retinal damage. Additionally, GLAST maintains the glutathione levels in Müller cells by transporting glutamate, the substrate for glutathione synthesis, into the cells. Glutathione has strong antioxidative properties. Taken together, GLAST deficiency leads to RGC degeneration caused by both excitotoxicity and oxidative stress.

GLT-1. GLT-1 is one of the major glutamate transporters along with GLAST, and is found only in cones and various types of bipolar cells. The characteristic localization of GLT-1 on bipolar cells in the vicinity of the ganglion cell implies

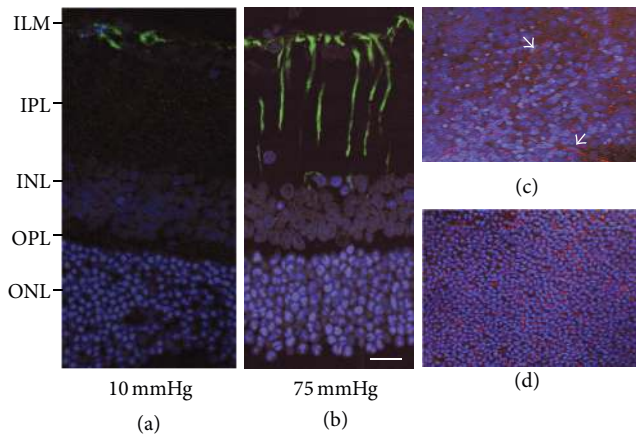


FIGURE 3: Immunofluorescent localization of glial fibrillary acidic protein by confocal fluorescent microscopy. (a) GFAP expression is recognized as FITC fluorescence, and localized in the Müller cells endfeet of (arrow) in a normal retina (10 mmHg). (b) Apparent fluorescent reaction is recognized in the Müller cell body (arrowheads) and the Müller cells endfeet (arrow) at 75 mmHg. (c) and (d) Tangential view of the GFAP expression at the level of the inner nuclear layer (c) and the outer nuclear layer (d). GFAP-stained Müller cell bodies were recognized as (rhodamine-stained) reddish dots among the DAPI- (4',6-diamidino-2-phenylindole dihydrochloride) stained nuclei. Note the obliquely running Müller cell process (arrows). Figures (a) to (d) are in the same magnification. Figures (a) to (d) are in the same magnification. Bar = 20 μm .

that GLT-1 may regulate glutamate concentration around ganglion cell synapse [100]. It is because the specific subtype of ganglion cells is known to degenerate during glaucoma [108].

GLT-1 is reported to be down-regulated in glaucomatous eyes in rats [100] and mice [101]. However, Park et al. [102] reported that GLT-1 was expressed in cone photoreceptors and some cone bipolar cells and the levels of expression were significantly increased in *in vivo* rat glaucoma model. In contrast, GLAST expression, which occurred in Müller cells, the main retinal glial cells, remained stable during the experimental period. These results suggest that integrity of GLT-1 may be a prerequisite for the maintenance of glutamate homeostasis in the retina undergoing glaucoma [109].

Additionally, one of the splice variants of GLT-1, GLT-1c, showed clear response against the IOP elevation. In normal eyes of humans and rats, GLT-1c was expressed only in photoreceptors. In glaucoma, there was additional preferential expression of GLT-1c in retinal ganglion cells [36]. The induction of GLT-1c expression by retinal ganglion cells may indicate that the perturbation in glutamate homeostasis is evident in glaucoma and that such anomalies selectively influence retinal ganglion cells. These results suggest that the expression of GLT-1c may represent an attempt by retinal ganglion cells to protect themselves against elevated levels of glutamate. GLT-1c may be a useful indicator of the extent of stress of the retinal ganglion cells and thus a tool for examining outcomes of potential therapeutic and experimental interventions.

EAAC-1. Harada et al. [29] utilized EAAC1-deficient mice and examined the long-term effect of retinal morphology during postnatal development on RGC survival *in vivo*. They found that EAAC-1-knockout mice showed spontaneously occurring RGC death and typical glaucomatous damage of the optic nerve without elevated IOP. The main role of EAAC-1 is to transport cysteine into RGCs as a precursor for neuronal glutathione synthesis [47, 110–112]. Thus, EAAC-1 deficiency induces RGC loss mainly through oxidative stress.

3.2.2. Glutamine Synthetase. It remains controversial whether pressure elevation changes the expression and activities of glutamine synthetase. Although increases in the expression of glutamine synthetase were reported after pressure elevation [21, 113, 114], decreases in activity and expression of glutamine synthetase have been also reported [115, 116]. Shen et al. [113] reported that high concentration of vitreal glutamate induced upregulation of glutamine synthetase. Such upregulation was blocked if IOP was acutely elevated for 24 hours, but was restored if IOP remained elevated for 1 week.

These findings suggest that moderate elevation of IOP causes only short-term functional changes of glutamate metabolism by retinal Müller cells. However, it is not known to what extent endogenous extracellular glutamate can regulate glutamine synthetase expression in normal eyes or in eyes with glaucoma.

In primary glaucoma in dogs [116], it is reported that decreases in glutamine synthetase immunoreactivity were associated with the damaged regions of the retina. These findings may indicate that the decrease in glutamine synthetase potentiates ischemia-induced early glutamate redistribution and neuronal damage in canine primary glaucoma.

Ishikawa et al. examined the enzyme activity [104] and expressional changes of GLAST [117] induced by elevated pressure (75 mmHg) for 24 hours using a rat *ex vivo* hydropressure model. In this acute model, elevated pressure suppresses activity and expression of glutamine synthetase. In addition, it is revealed that depressed GLAST expression results in downregulation of glutamine synthetase activity. These results may indicate that during pressure-loading, impairment of GLAST takes place first, and results in downregulation of glutamine synthetase activity as a second effect.

3.2.3. Energy Deprivation. It has been reported that the RGC loses the retrograde axonal transport by mechanical causes, resulting in apoptotic or necrotic cell death in the experimental glaucoma model induced by perilimbal and episcleral vein photocoagulation [118]. Axonal transport is the prominent energy-consuming process to transport cell organelles, neurotrophic factors, and other substances [119]. Ju et al. [120] reported that IOP elevation directly damaged mitochondria in the optic nerve head axons in the glaucomatous DBA/2J mice. Mitochondrial impairment induces cellular ATP reduction, resulting in disturbance of axonal transport and influence the viability of the retinal ganglion cells via retrograde axonal degeneration [121, 122]. Excitotoxicity is also considered to be closely associated with

ATP-depletion induced by mitochondrial dysfunction [123–128]. These results indicate the important features about the potential risk of energy deprivation in the glaucoma.

3.3. Diabetic Retinopathy. Diabetic retinopathy is the most common complication of the diabetes, and a leading cause of visual impairment during the working-age in the industrialized countries [129]. Diabetic retinopathy has been classically considered as a microcirculatory disease of the retina. However, it has been recently reported that retinal degeneration precedes the impairment of the microcirculation. In the early stage of the diabetic retinopathy, elevated levels of glutamate, oxidative stress, the overexpression of the renin-angiotensin system, and the upregulation of receptor for advanced glycation end-products play an essential role [130]. These results mean that main features of retinal degeneration are already present in the retinas of diabetes without any microcirculatory abnormalities. In the later stage, retinal excitotoxicity participates in vascular endothelial growth factor (VEGF-) induced microcirculatory abnormalities such as disruption of blood-retinal barrier or an increase in the vascular permeability.

The relationship between the excitotoxicity and the induction of VEGF is one of the most interesting pathways linking neurodegeneration with vascular impairment. NMDA receptors exert a tonic inhibition of VEGF secretion in cultures of rat purified Müller cells, thus indicating that in healthy retina glutamatergic stimulation could have a protective role [131]. In addition, it has been demonstrated that the elevation of VEGF expression and blood-retinal barrier (BRB) breakdown in streptozotocine-induced diabetic rats are blocked by the NMDA receptor channel blocker and the uncompetitive antagonist memantine [132].

These results suggest that hyperglycemia induces an increase in extracellular glutamate and the subsequent overactivation of NMDA receptors mediates VEGF production, BRB breakdown, and RGC damage observed in diabetic retinopathy. In this regard, it has recently been reported that the attenuation of retinal NMDA receptor activity by brimonidine (an alpha-2 adrenergic receptor agonist) results in a marked decrease in vitreoretinal VEGF and the inhibition of BRB breakdown in diabetic rats [132].

3.3.1. Glutamate Transporters. Increased concentration of glutamate in vitreous body of diabetic retinopathy patients has been reported [133]. Early in the course of diabetic retinopathy, the function of the glutamate transporter in Müller cells is reported to decrease by a mechanism that is likely to involve oxidation [134].

As the activity of glutamate transporter can be rapidly restored, it seems possible that targeting this molecule for therapeutic intervention may restore glutamate homeostasis, and ameliorate sight-threatening complications of diabetic retinopathy [135].

Recently, Lau et al. [136] reported decreases in the transcript levels of genes related to glutamate neurotransmission and transport as diabetes progresses in the rat retina. Diabetes caused significant decrease in the transcriptional expression

of glutamate transporter *SLC1A3* gene encoding GLAST protein, leading to the decreased removal of glutamate from the extracellular space, suggesting that diabetes impairs the glutamate transporter function of Müller cells. Consistently, faint GLAST immunoreactivity was restricted to the inner retina with the diabetic retinopathy compared with the throughout staining of the normal retina [137].

3.3.2. Glutamine Synthetase. In diabetic rats, an increase in glutamine synthetase and a decrease in glutamate transporter are reported [138]. Series Analysis of Gene Expression (SAGE) analysis of the diabetic retina revealed a 45.6% reduction in transcript levels of glutamine synthetase in streptozotocin-induced diabetic rats compared with normal rats [139]. RT-PCR and colorimetric enzyme activity assays revealed significant decreases in glutamine synthetase mRNA expression and the enzyme activity as early as the first month of diabetes development, with a progressive decrease in GS mRNA level and enzyme activity over a 12-month period. Northern blot analysis indicated a linear correlation between the reduction in glutamine synthetase expression and the time course of diabetic retinopathy, which was validated by real-time RT-PCR. These results implicate glutamine synthetase as a possible biomarker for evaluating the severity of developed diabetic retinopathy over the time course of diabetes progression. Immunohistochemistry revealed that antiglutamine synthetase labeling was prominent in the outer and inner plexiform layer as well as the ganglion cell layer in the normal control, while the signal was diminished in the diabetic retina compared to control retina [137]. By contrast, Silva et al. reported that Müller cells exposed to high-glucose medium produced higher levels of glutamine synthetase, but reduced levels of glutamate transporter [138].

4. Concluding Comments

Glutamate uptake and its enzymatic degradation are the critical steps to maintain the homeostasis of extracellular glutamate concentration in the retina. Down-regulation of these process induces excitotoxic neuronal degeneration in retinal diseases such as ischemia, glaucoma, and diabetic retinopathy. The abnormalities in glutamate metabolism are also caused by energy failure due to mitochondrial dysfunction. As glutamine synthetase consumes ATP to convert glutamate to glutamine, ATP depletion induces the impairment of delegation of glutamate, resulting in the elevation of the extracellular concentration of glutamate. Although glutamate transporters do not require ATP consumption, they are the Na⁺-dependent glutamate transporters, which utilize ionic gradients of Na⁺, K⁺, and H⁺ to drive glutamate transport against the concentration gradient. Since the ionic gradients are maintained by the sodium pump, they are dependent upon ATP production. When ATP levels drop, both glutamate uptake and degradation are remarkably inhibited, and the risk to induce excitotoxicity significantly increases.

Retinal ischemia induces irreversible excitotoxic degeneration as the consequence of ATP depletion. Reperfusion after ischemia induces exaggerated retinal degeneration.

In ischemia/reperfusion model, GLAST function decreases in the early phase, followed by prompt functional recovery. Glutamine synthetase activity is upregulated for a short period after onset of ischemia to protect retinal neurons against excitotoxicity. As the rates of glycolysis decrease according to the depletion of glycogen storage, glutamine synthetase activity decreases. In the experimental glaucoma model, elevated IOP suppresses GLAST expression first, and results in the downregulation of glutamine synthetase activity as a second effect. IOP elevation also damaged mitochondria, inducing cellular ATP depletion, resulting in ganglion cell death. In the diabetic rat, the decrease in the expression of glutamate transporters and glutamine synthetase is reported. Hyperglycemia also induces an glutamate excess, and the subsequent overactivation of NMDA receptors mediates VEGF production and RGC damage.

These results indicate the importance of maintaining the homeostasis of glutamate metabolism to prevent the excitotoxicity in retinal diseases such as the retinal ischemia, glaucoma, and diabetic retinopathy.

Acknowledgments

The author thanks Professor Takeshi Yoshitomi (Department of Ophthalmology Akita Graduate University School of Medicine) and Professor Yukitoshi Izumi (Department of Psychiatry Washington University School of Medicine) for their instructions and suggestions. This work was supported by JSPS KAKENHI Grant no. 24592666 to M.I.

References

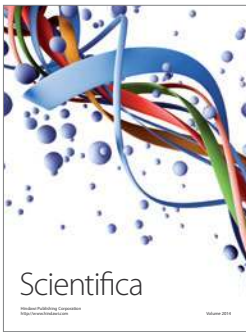
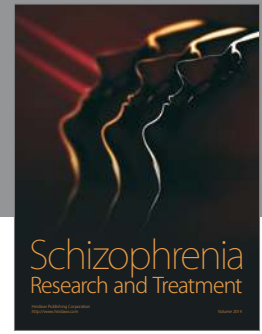
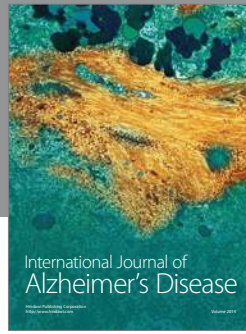
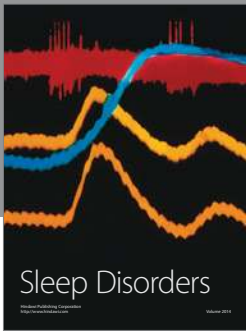
- [1] W. B. Thoreson and P. Witkovsky, "Glutamate receptors and circuits in the vertebrate retina," *Progress in Retinal and Eye Research*, vol. 18, no. 6, pp. 765–810, 1999.
- [2] S. C. Massey and R. F. Miller, "Excitatory amino acid receptors of rod- and cone-driven horizontal cells in the rabbit retina," *Journal of Neurophysiology*, vol. 57, no. 3, pp. 645–659, 1987.
- [3] S. C. Massey and R. F. Miller, "N-Methyl-D-aspartate receptors of ganglion cells in rabbit retina," *Journal of Neurophysiology*, vol. 63, no. 1, pp. 16–30, 1990.
- [4] D. R. Lucas and J. P. Newhouse, "The toxic effect of sodium l-glutamate on the inner layers of the retina," *Archives of Ophthalmol*, vol. 58, no. 2, pp. 193–201, 1957.
- [5] J. W. Olney, "The toxic effects of glutamate and related compounds in the retina and the brain," *Retina*, vol. 2, no. 4, pp. 341–359, 1982.
- [6] D. R. Sisk and T. Kuwabara, "Histologic changes in the inner retina of albino rats following intravitreal injection of monosodium L-glutamate," *Graefes Archive for Clinical and Experimental Ophthalmology*, vol. 223, no. 5, pp. 250–258, 1985.
- [7] C. K. Vorwerk, S. A. Lipton, D. Zurakowski, B. T. Hyman, B. A. Sabel, and E. B. Dreyer, "Chronic low-dose glutamate is toxic to retinal ganglion cells: toxicity blocked by memantine," *Investigative Ophthalmology and Visual Science*, vol. 37, no. 8, pp. 1618–1624, 1996.
- [8] A. Derouiche and T. Rauen, "Coincidence of L-glutamate/L-aspartate transporter (GLAST) and glutamine synthetase (GS) immunoreactions in retinal glia: evidence for coupling of GLAST and GS in transmitter clearance," *Journal of Neuroscience Research*, vol. 42, no. 1, pp. 131–143, 1995.
- [9] T. Rauen and M. Wiefßner, "Fine tuning of glutamate uptake and degradation in glial cells: common transcriptional regulation of GLAST1 and GS," *Neurochemistry International*, vol. 37, no. 2-3, pp. 179–189, 2000.
- [10] Y. Izumi, K. Shimamoto, A. M. Benz, S. B. Hammerman, J. W. Olney, and C. F. Zorumski, "Glutamate transporters and retinal excitotoxicity," *Glia*, vol. 39, no. 1, pp. 58–68, 2002.
- [11] T. Storck, S. Schulte, K. Hofmann, and W. Stoffel, "Structure, expression, and functional analysis of a Na⁺-dependent glutamate/aspartate transporter from rat brain," *Proceedings of the National Academy of Sciences of the United States of America*, vol. 89, no. 22, pp. 10955–10959, 1992.
- [12] G. Pines, Y. Zhang, and B. I. Kanner, "Glutamate 404 is involved in the substrate discrimination of GLT-1, a (Na⁺ + K⁺)-coupled glutamate transporter from rat brain," *Journal of Biological Chemistry*, vol. 270, no. 29, pp. 17093–17097, 1995.
- [13] Y. Kanai and M. A. Hediger, "Primary structure and functional characterization of a high-affinity glutamate transporter," *Nature*, vol. 360, no. 6403, pp. 467–471, 1992.
- [14] W. A. Fairman, R. J. Vandenberg, J. L. Arriza, M. P. Kavanaugh, and S. G. Amara, "An excitatory amino-acid transporter with properties of a ligand-gated chloride channel," *Nature*, vol. 375, no. 6532, pp. 599–603, 1995.
- [15] J. L. Arriza, S. Eliasof, M. P. Kavanaugh, and S. G. Amara, "Excitatory amino acid transporter 5, a retinal glutamate transporter coupled to a chloride conductance," *Proceedings of the National Academy of Sciences of the United States of America*, vol. 94, no. 8, pp. 4155–4160, 1997.
- [16] A. Bringmann, T. Pannicke, J. Grosche et al., "Müller cells in the healthy and diseased retina," *Progress in Retinal and Eye Research*, vol. 25, no. 4, pp. 397–424, 2006.
- [17] Y. Izumi, C. O. Kirby-Sharkey, A. M. Benz et al., "Swelling of Müller cells induced by AP3 and glutamate transport substrates in rat retina," *Glia*, vol. 17, no. 4, pp. 285–293, 1996.
- [18] K. Shimamoto, B. LeBrun, Y. Yasuda-Kamatani et al., "DL-threo- β -benzyloxyaspartate, a potent blocker of excitatory amino acid transporters," *Molecular Pharmacology*, vol. 53, no. 2, pp. 195–201, 1998.
- [19] K. Shimamoto, Y. Shigeri, Y. Yasuda-Kamatani, B. Lebrun, N. Yumoto, and T. Nakajima, "Syntheses of optically pure β -hydroxyaspartate derivatives as glutamate transporter blockers," *Bioorganic and Medicinal Chemistry Letters*, vol. 10, no. 21, pp. 2407–2410, 2000.
- [20] Y. Shigeri, K. Shimamoto, Y. Yasuda-Kamatani et al., "Effects of threo- β -hydroxyaspartate derivatives on excitatory amino acid transporters (EAAT4 and EAAT5)," *Journal of Neurochemistry*, vol. 79, no. 2, pp. 297–302, 2001.
- [21] Y. Izumi, S. B. Hammerman, C. O. Kirby, A. M. Benz, J. W. Olney, and C. F. Zorumski, "Involvement of glutamate in ischemic neurodegeneration in isolated retina," *Visual Neuroscience*, vol. 20, no. 2, pp. 97–107, 2003.
- [22] Y. Otori, S. Shimada, K. Tanaka, I. Ishimoto, Y. Tano, and M. Tohyama, "Marked increase in glutamate-aspartate transporter (GLAST/GluT-1) mRNA following transient retinal ischemia," *Molecular Brain Research*, vol. 27, no. 2, pp. 310–314, 1994.
- [23] T. Rauen, J. D. Rothstein, and H. Wässle, "Differential expression of three glutamate transporter subtypes in the rat retina," *Cell and Tissue Research*, vol. 286, no. 3, pp. 325–336, 1996.

- [24] K. P. Lehre, S. Davanger, and N. C. Danbolt, "Localization of the glutamate transporter protein GLAST in rat retina," *Brain Research*, vol. 744, no. 1, pp. 129–137, 1997.
- [25] V. P. Sarthy, L. Pignataro, T. Pannicke et al., "Glutamate transport by retinal Müller cells in glutamate/aspartate transporter-knockout mice," *Glia*, vol. 49, no. 2, pp. 184–196, 2005.
- [26] T. Harada, C. Harada, M. Watanabe et al., "Functions of the two glutamate transporters GLAST and GLT-1 in the retina," *Proceedings of the National Academy of Sciences of the United States of America*, vol. 95, no. 8, pp. 4663–4666, 1998.
- [27] J. D. Rothstein, M. Dykes-Hoberg, C. A. Pardo et al., "Knockout of glutamate transporters reveals a major role for astroglial transport in excitotoxicity and clearance of glutamate," *Neuron*, vol. 16, no. 3, pp. 675–686, 1996.
- [28] N. L. Barnett and D. V. Pow, "Antisense knockdown of GLAST, a glial glutamate transporter, compromises retinal function," *Investigative Ophthalmology and Visual Science*, vol. 41, no. 2, pp. 585–591, 2000.
- [29] T. Harada, C. Harada, K. Nakamura et al., "The potential role of glutamate transporters in the pathogenesis of normal tension glaucoma," *Journal of Clinical Investigation*, vol. 117, no. 7, pp. 1763–1770, 2007.
- [30] N. J. Maragakis, J. Dietrich, V. Wong et al., "Glutamate Transporter Expression and Function in Human Glial Progenitors," *Glia*, vol. 45, no. 2, pp. 133–143, 2004.
- [31] C. K. Vorwerk, R. Naskar, F. Schuettauf et al., "Depression of retinal glutamate transporter function leads to elevated intravitreal glutamate levels and ganglion cell death," *Investigative Ophthalmology and Visual Science*, vol. 41, no. 11, pp. 3615–3621, 2000.
- [32] D. L. Black, "Mechanisms of alternative pre-messenger RNA splicing," *Annual Review of Biochemistry*, vol. 72, pp. 291–336, 2003.
- [33] Q. Pan, O. Shai, L. J. Lee, B. J. Frey, and B. J. Blencowe, "Deep surveying of alternative splicing complexity in the human transcriptome by high-throughput sequencing," *Nature Genetics*, vol. 40, no. 12, pp. 1413–1415, 2008.
- [34] L. T. Macnab, S. M. Williams, and D. V. Pow, "Expression of the exon 3 skipping form of GLAST, GLAST1a, in brain and retina," *NeuroReport*, vol. 17, no. 18, pp. 1867–1870, 2006.
- [35] L. T. Macnab and D. V. Pow, "Central nervous system expression of the exon 9 skipping form of the glutamate transporter GLAST," *NeuroReport*, vol. 18, no. 8, pp. 741–745, 2007.
- [36] R. K. P. Sullivan, E. WoldeMussie, L. Macnab, G. Ruiz, and D. V. Pow, "Evoked expression of the glutamate transporter GLT-1c in retinal ganglion cells in human glaucoma and in a rat model," *Investigative Ophthalmology and Visual Science*, vol. 47, no. 9, pp. 3853–3859, 2006.
- [37] A. Lee, A. R. Anderson, S. J. Beasley, N. L. Barnett, P. Poronnik, and D. V. Pow, "A new splice variant of the glutamate-aspartate transporter: cloning and immunolocalization of GLAST1c in rat, pig and human brains," *Journal of Chemical Neuroanatomy*, vol. 43, no. 1, pp. 52–63, 2012.
- [38] T. Rauen, M. Wiefßner, R. Sullivan, A. Lee, and D. V. Pow, "A new GLT1 splice variant: cloning and immunolocalization of GLT1c in the mammalian retina and brain," *Neurochemistry International*, vol. 45, no. 7, pp. 1095–1106, 2004.
- [39] P. Reye, R. Sullivan, E. L. Fletcher, and D. V. Pow, "Distribution of two splice variants of the glutamate transporter GLT1 in the retinas of humans, monkeys, rabbits, rats, cats, and chickens," *Journal of Comparative Neurology*, vol. 445, no. 1, pp. 1–12, 2002.
- [40] P. Reye, R. Sullivan, and D. V. Pow, "Distribution of two splice variants of the glutamate transporter GLT-1 in the developing rat retina," *Journal of Comparative Neurology*, vol. 447, no. 4, pp. 323–330, 2002.
- [41] S. Holmseth, H. A. Scott, K. Real et al., "The concentrations and distributions of three C-terminal variants of the GLT1 (EAAT2; slc1a2) glutamate transporter protein in rat brain tissue suggest differential regulation," *Neuroscience*, vol. 162, no. 4, pp. 1055–1071, 2009.
- [42] L. Had-Aissouni, "Toward a new role for plasma membrane sodium-dependent glutamate transporters of astrocytes: maintenance of antioxidant defenses beyond extracellular glutamate clearance," *Amino Acids*, vol. 42, no. 1, pp. 181–197, 2012.
- [43] N. Zerangue and M. P. Kavanaugh, "Interaction of L-cysteine with a human excitatory amino acid transporter," *Journal of Physiology*, vol. 493, no. 2, pp. 419–423, 1996.
- [44] K. Aoyama, W. S. Sang, A. M. Hamby et al., "Neuronal glutathione deficiency and age-dependent neurodegeneration in the EAAC1 deficient mouse," *Nature Neuroscience*, vol. 9, no. 1, pp. 119–126, 2006.
- [45] H. Lie-Venema, T. B. Hakvoort, F. J. van Hemert, A. F. Moorman, and W. H. Lamers, "Regulation of the spatiotemporal pattern of expression of the glutamine synthetase gene," *Progress in Nucleic Acid Research and Molecular Biology*, vol. 61, pp. 243–308, 1998.
- [46] Y. He, T. B. M. Hakvoort, J. L. M. Vermeulen et al., "Glutamine synthetase deficiency in murine astrocytes results in neonatal death," *Glia*, vol. 58, no. 6, pp. 741–754, 2010.
- [47] R. E. Riepe and M. D. Norenburg, "Müller cell localisation of glutamine synthetase in rat retina," *Nature*, vol. 268, no. 5621, pp. 654–655, 1977.
- [48] A. Bringmann, T. Pannicke, B. Biedermann et al., "Role of retinal glial cells in neurotransmitter uptake and metabolism," *Neurochemistry International*, vol. 54, no. 3–4, pp. 143–160, 2009.
- [49] S. Poitry, C. Poitry-Yamate, J. Ueberfeld, P. R. MacLeish, and M. Tsacopoulos, "Mechanisms of glutamate metabolic signaling in retinal glial (Müller) cells," *Journal of Neuroscience*, vol. 20, no. 5, pp. 1809–1821, 2000.
- [50] N. L. Barnett, D. V. Pow, and S. R. Robinson, "Inhibition of Müller cell glutamine synthetase rapidly impairs the retinal response to light," *Glia*, vol. 30, no. 1, pp. 64–73, 2000.
- [51] D. Nicholls and D. Attwell, "The release and uptake of excitatory amino acids," *Trends in Pharmacological Sciences*, vol. 11, no. 11, pp. 462–468, 1990.
- [52] I. A. Silver and M. Erecinska, "Energetic demands of the Na⁺/K⁺ ATPase in mammalian astrocytes," *Glia*, vol. 21, pp. 35–45, 1997.
- [53] Y. Izumi, C. O. Kirby, A. M. Benz, J. W. Olney, and C. F. Zorumski, "Müller cell swelling, glutamate uptake, and excitotoxic neurodegeneration in the isolated rat retina," *Glia*, vol. 25, no. 4, pp. 379–389, 1999.
- [54] D. J. Rossi, T. Oshima, and D. Attwell, "Glutamate release in severe brain ischaemia is mainly by reversed uptake," *Nature*, vol. 403, no. 6767, pp. 316–321, 2000.
- [55] M. M. Jablonski, N. E. Freeman, W. E. Orr et al., "Genetic pathways regulating glutamate levels in retinal müller cells," *Neurochemical Research*, vol. 36, no. 4, pp. 594–603, 2011.
- [56] D. Jabaudon, M. Scanziani, B. H. Gähwiler, and U. Gerber, "Acute decrease in net glutamate uptake during energy deprivation," *Proceedings of the National Academy of Sciences of the United States of America*, vol. 97, no. 10, pp. 5610–5615, 2000.

- [57] A. Novelli, J. A. Reilly, P. G. Lysko, and R. C. Henneberry, "Glutamate becomes neurotoxic via the N-methyl-D-aspartate receptor when intracellular energy levels are reduced," *Brain Research*, vol. 451, no. 1-2, pp. 205–212, 1988.
- [58] D. Nguyen, M. V. Alavi, K.-Y. Kim et al., "A new vicious cycle involving glutamate excitotoxicity, oxidative stress and mitochondrial dynamics," *Cell Death and Disease*, vol. 2, no. 12, article e240, 2011.
- [59] T. Rauen, W. R. Taylor, K. Kuhlbrodt, and M. Wiessner, "High-affinity glutamate transporters in the rat retina: a major role of the glial glutamate transporter GLAST-1 in transmitter clearance," *Cell and Tissue Research*, vol. 291, no. 1, pp. 19–31, 1998.
- [60] T. Rauen, "Diversity of glutamate transporter expression and function in the mammalian retina," *Amino Acids*, vol. 19, no. 1, pp. 53–62, 2000.
- [61] P. Louzada-Junior, J. J. Dias, W. F. Santos, J. J. Lachat, H. F. Bradford, and J. Coutinho-Netto, "Glutamate release in experimental ischaemia of the retina: an approach using microdialysis," *Journal of Neurochemistry*, vol. 59, no. 1, pp. 358–363, 1992.
- [62] M. J. Neal, J. R. Cunningham, P. H. Hutson, and J. Hogg, "Effects of ischaemia on neurotransmitter release from the isolated retina," *Journal of Neurochemistry*, vol. 62, no. 3, pp. 1025–1033, 1994.
- [63] A. Muller, M. Villain, and C. Bonne, "The release of amino acids from ischemic retina," *Experimental Eye Research*, vol. 64, no. 2, pp. 291–293, 1997.
- [64] D. S. Casper, R. L. Trelstad, and L. Reif-Lehrer, "Glutamate-induced cellular injury in isolated chick embryo retina: muller cell localization of initial effects," *Journal of Comparative Neurology*, vol. 209, no. 1, pp. 79–90, 1982.
- [65] S. S. Hayreh, M. B. Zimmerman, A. Kimura, and A. Sanon, "Central retinal artery occlusion. Retinal survival time," *Experimental Eye Research*, vol. 78, no. 3, pp. 723–736, 2004.
- [66] H. Weiss, "The vitreous body as an energy depot in intraocular ischemia," *Bericht uber die Zusammenkunft. Deutsche Ophthalmologische Gesellschaft*, vol. 71, pp. 416–418, 1972.
- [67] D. Kaskel, H. Valenzuela, O. Hockwin, and M. Muntau, "Enzymologic and histologic investigations in normal and pressure ischemic retina of rabbits," *Albrecht von Graefes Archiv fur Klinische und Experimentelle Ophthalmologie*, vol. 200, no. 1, pp. 71–78, 1976.
- [68] P. Wassilewa, O. Hocksin, and I. Korte, "Glycogen concentration changes in retina, vitreous body and other eye tissues caused by disturbances of blood circulation," *Albrecht von Graefes Archiv fur Klinische und Experimentelle Ophthalmologie*, vol. 199, no. 2, pp. 115–120, 1976.
- [69] G. D. Zeevalk and W. J. Nicklas, "Activity at the GABA transporter contributes to acute cellular swelling produced by metabolic impairment in retina," *Vision Research*, vol. 37, no. 24, pp. 3463–3470, 1997.
- [70] S. Berger, S. I. Savitz, S. Nijhawan et al., "Deleterious role of TNF- α in retinal ischemia-reperfusion injury," *Investigative Ophthalmology and Visual Science*, vol. 49, no. 8, pp. 3605–3610, 2008.
- [71] N. N. Osborne, R. J. Casson, J. P. M. Wood, G. Chidlow, M. Graham, and J. Melena, "Retinal ischemia: mechanisms of damage and potential therapeutic strategies," *Progress in Retinal and Eye Research*, vol. 23, no. 1, pp. 91–147, 2004.
- [72] N. L. Barnett, D. V. Pow, and N. D. Bull, "Differential perturbation of neuronal and glial glutamate transport systems in retinal ischaemia," *Neurochemistry International*, vol. 39, no. 4, pp. 291–299, 2001.
- [73] Y. Wakabayashi, T. Yagihashi, J. Kezuka, D. Muramatsu, M. Usui, and T. Iwasaki, "Glutamate levels in aqueous humor of patients with retinal artery occlusion," *Retina*, vol. 26, no. 4, pp. 432–436, 2006.
- [74] A. Bringmann, O. Uckermann, T. Pannicke, I. Iandiev, A. Reichenbach, and P. Wiedemann, "Neuronal versus glial cell swelling in the ischaemic retina," *Acta Ophthalmologica Scandinavica*, vol. 83, no. 5, pp. 528–538, 2005.
- [75] N. L. Barnett and S. D. Grozdanic, "Glutamate transporter localization does not correspond to the temporary functional recovery and late degeneration after acute ocular ischemia in rats," *Experimental Eye Research*, vol. 79, no. 4, pp. 513–524, 2004.
- [76] R. A. Swanson, J. Liu, J. W. Miller et al., "Neuronal regulation of glutamate transporter subtype expression in astrocytes," *Journal of Neuroscience*, vol. 17, no. 3, pp. 932–940, 1997.
- [77] M. Conradt and W. Stoffel, "Inhibition of the high-affinity brain glutamate transporter GLAST-1 via direct phosphorylation," *Journal of Neurochemistry*, vol. 68, no. 3, pp. 1244–1251, 1997.
- [78] N. D. Bull and N. L. Barnett, "Antagonists of protein kinase C inhibit rat retinal glutamate transport activity in situ," *Journal of Neurochemistry*, vol. 81, no. 3, pp. 472–480, 2002.
- [79] R. Russo, F. Cavaliere, G. P. Varano et al., "Impairment of neuronal glutamate uptake and modulation of the glutamate transporter GLT-1 induced by retinal ischemia," *PLoS ONE*, vol. 8, no. 8, Article ID e69250, 2013.
- [80] E. Kosenko, M. Llansola, C. Montoliu et al., "Glutamine synthetase activity and glutamine content in brain: modulation by NMDA receptors and nitric oxide," *Neurochemistry International*, vol. 43, no. 4-5, pp. 493–499, 2003.
- [81] J. Stone, J. Maslim, K. Valter-Kocsi et al., "Mechanisms of photoreceptor death and survival in mammalian retina," *Progress in Retinal and Eye Research*, vol. 18, no. 6, pp. 689–735, 1999.
- [82] P. G. Hirrlinger, E. Ulbricht, I. Iandiev, A. Reichenbach, and T. Pannicke, "Alterations in protein expression and membrane properties during Müller cell gliosis in a murine model of transient retinal ischemia," *Neuroscience Letters*, vol. 472, no. 1, pp. 73–78, 2010.
- [83] D. Dorfman, D. C. Fernandez, M. Chianelli, M. Miranda, M. L. Aranda, and R. E. Rosenstein, "Post-ischemic environmental enrichment protects the retina from ischemic damage in adult rats," *Experimental Neurology*, vol. 240, pp. 146–156, 2013.
- [84] D. C. Fernandez, M. S. Chianelli, and R. E. Rosenstein, "Involvement of glutamate in retinal protection against ischemia/reperfusion damage induced by post-conditioning," *Journal of Neurochemistry*, vol. 111, no. 2, pp. 488–498, 2009.
- [85] X. Wang, X. Mo, D. Li et al., "Neuroprotective effect of transcorneal electrical stimulation on ischemic damage in the rat retina," *Experimental Eye Research*, vol. 93, no. 5, pp. 753–760, 2011.
- [86] M. Hlaváčková, K. Kožichová, J. Neckář et al., "Up-regulation and redistribution of protein kinase C- δ in chronically hypoxic heart," *Molecular Cell Biochemistry*, vol. 345, no. 1-2, pp. 271–282, 2010.
- [87] H. A. Quigley, R. W. Nickells, L. A. Kerrigan, M. E. Pease, D. J. Thibault, and D. J. Zack, "Retinal ganglion cell death in experimental glaucoma and after axotomy occurs by apoptosis," *Investigative Ophthalmology and Visual Science*, vol. 36, no. 5, pp. 774–786, 1995.

- [88] R. J. Casson, "Possible role of excitotoxicity in the pathogenesis of glaucoma," *Clinical and Experimental Ophthalmology*, vol. 34, no. 1, pp. 54–63, 2006.
- [89] D. E. Brooks, G. A. Garcia, E. B. Dreyer, D. Zurakowski, and R. E. Franco-Bourland, "Vitreous body glutamate concentration in dogs with glaucoma," *American Journal of Veterinary Research*, vol. 58, no. 8, pp. 864–867, 1997.
- [90] E. B. Dreyer, D. Zurakowski, R. A. Schumer, S. M. Podos, and S. A. Lipton, "Elevated glutamate levels in the vitreous body of humans and monkeys with glaucoma," *Archives of Ophthalmology*, vol. 114, no. 3, pp. 299–305, 1996.
- [91] L. Carter-Dawson, M. L. J. Crawford, R. S. Harwerth et al., "Vitreous glutamate concentration in monkeys with experimental glaucoma," *Investigative Ophthalmology and Visual Science*, vol. 43, no. 8, pp. 2633–2637, 2002.
- [92] R. A. Honkanen, S. Baruah, M. B. Zimmerman et al., "Vitreous amino acid concentrations in patients with glaucoma undergoing vitrectomy," *Archives of Ophthalmology*, vol. 121, no. 2, pp. 183–188, 2003.
- [93] H. Levkovitch-Verbin, K. R. G. Martin, H. A. Quigley, L. A. Baumrind, M. E. Pease, and D. Valenta, "Measurement of amino acid levels in the vitreous humor of rats after chronic intraocular pressure elevation or optic nerve transection," *Journal of Glaucoma*, vol. 11, no. 5, pp. 396–405, 2002.
- [94] S. Wamsley, B. T. Gabelt, D. B. Dahl et al., "Vitreous glutamate concentration and axon loss in monkeys with experimental glaucoma," *Archives of Ophthalmology*, vol. 123, no. 1, pp. 64–70, 2005.
- [95] A. J. Lotery, "Glutamate excitotoxicity in glaucoma: truth or fiction?" *Eye*, vol. 19, no. 4, pp. 369–370, 2005.
- [96] N. N. Osborne, G. Chidlow, and J. P. M. Wood, "Glutamate excitotoxicity in glaucoma: truth or fiction? By AJ Lotery," *Eye*, vol. 20, no. 12, pp. 1392–1394, 2006.
- [97] Y. Kanai and M. A. Hediger, "The glutamate/neutral amino acid transporter family SLC1: molecular, physiological and pharmacological aspects," *Pflugers Archiv European Journal of Physiology*, vol. 447, no. 5, pp. 469–479, 2004.
- [98] Y. Izumi, C. O. Kirby, A. M. Benz, J. W. Olney, and C. F. Zorumski, "Swelling of Müller cells induced by AP3 and glutamate transport substrates in rat retina," *Glia*, vol. 17, no. 4, pp. 285–293, 1996.
- [99] R. Naskar, C. K. Vorwerk, and E. B. Dreyer, "Concurrent downregulation of a glutamate transporter and receptor in glaucoma," *Investigative Ophthalmology and Visual Science*, vol. 41, no. 7, pp. 1940–1944, 2000.
- [100] K. R. G. Martin, H. Levkovitch-Verbin, D. Valenta, L. Baumrind, M. E. Pease, and H. A. Quigley, "Retinal glutamate transporter changes in experimental glaucoma and after optic nerve transection in the rat," *Investigative Ophthalmology and Visual Science*, vol. 43, no. 7, pp. 2236–2243, 2002.
- [101] F. Schuettauf, S. Thaler, S. Bolz et al., "Alterations of amino acids and glutamate transport in the DBA/2J mouse retina; possible clues to degeneration," *Graefes Archive for Clinical and Experimental Ophthalmology*, vol. 245, no. 8, pp. 1157–1168, 2007.
- [102] C. K. Park, J. Cha, S. C. Park et al., "Differential expression of two glutamate transporters, GLAST and GLT-1, in an experimental rat model of glaucoma," *Experimental Brain Research*, vol. 197, no. 2, pp. 101–109, 2009.
- [103] E. Woldemussie, M. Wijono, and G. Ruiz, "Müller cell response to laser-induced increase in intraocular pressure in rats," *Glia*, vol. 47, no. 2, pp. 109–119, 2004.
- [104] M. Ishikawa, T. Yoshitomi, C. F. Zorumski, and Y. Izumi, "Effects of acutely elevated hydrostatic pressure in a rat ex vivo retinal preparation," *Investigative Ophthalmology and Visual Science*, vol. 51, no. 12, pp. 6414–6423, 2010.
- [105] S. W. Park, K.-Y. Kim, J. D. Lindsey et al., "A selective inhibitor of Drp1, Mdivi-1, increases retinal ganglion cell survival in acute ischemic mouse retina," *Investigative Ophthalmology and Visual Science*, vol. 52, no. 5, pp. 2837–2843, 2011.
- [106] S. Yoneda, E. Tanaka, W. Goto, T. Ota, and H. Hara, "Topiramate reduces excitotoxic and ischemic injury in the rat retina," *Brain Research*, vol. 967, no. 1–2, pp. 257–266, 2003.
- [107] N. A. Whitlock, N. Agarwal, J.-X. Ma, and C. E. Crosson, "Hsp27 upregulation by HIF-1 signaling offers protection against retinal ischemia in rats," *Investigative Ophthalmology and Visual Science*, vol. 46, no. 3, pp. 1092–1098, 2005.
- [108] H. A. Quigley, "Neuronal death in glaucoma," *Progress in Retinal and Eye Research*, vol. 18, no. 1, pp. 39–57, 1999.
- [109] M. Persson and L. Rönnbäck, "Microglial self-defence mediated through GLT-1 and glutathione," *Amino Acids*, vol. 42, no. 1, pp. 207–219, 2012.
- [110] R. Dringen, B. Pfeiffer, and B. Hamprecht, "Synthesis of the antioxidant glutathione in neurons: supply by astrocytes of CysGly as precursor for neuronal glutathione," *Journal of Neuroscience*, vol. 19, no. 2, pp. 562–569, 1999.
- [111] G. Wu, Y.-Z. Fang, S. Yang, J. R. Lupton, and N. D. Turner, "Glutathione metabolism and its implications for health," *Journal of Nutrition*, vol. 134, no. 3, pp. 489–492, 2004.
- [112] W. Reichelt, J. Stabel-Burow, T. Pannicke, H. Weichert, and U. Heinemann, "The glutathione level of retinal Müller glial cells is dependent on the high-affinity sodium-dependent uptake of glutamate," *Neuroscience*, vol. 77, no. 4, pp. 1213–1224, 1997.
- [113] F. Shen, B. Chen, J. Danias et al., "Glutamate-induced glutamine synthetase expression in retinal Müller cells after short-term ocular hypertension in the rat," *Investigative Ophthalmology and Visual Science*, vol. 45, no. 9, pp. 3107–3112, 2004.
- [114] S. Zhang, H. Wang, Q. Lu et al., "Detection of early neuron degeneration and accompanying glial responses in the visual pathway in a rat model of acute intraocular hypertension," *Brain Research*, vol. 1303, pp. 131–143, 2009.
- [115] M. C. Moreno, P. Sande, H. A. Marcos, N. de Zavalía, M. I. K. Sarmiento, and R. E. Rosenstein, "Effect of glaucoma on the retinal glutamate/glutamine cycle activity," *The FASEB Journal*, vol. 19, no. 9, pp. 1161–1162, 2005.
- [116] C.-T. Chen, K. Alyahya, J. R. Gionfriddo, R. R. Dubielzig, and J. E. Madl, "Loss of glutamine synthetase immunoreactivity from the retina in canine primary glaucoma," *Veterinary Ophthalmology*, vol. 11, no. 3, pp. 150–157, 2008.
- [117] M. Ishikawa, T. Yoshitomi, C. F. Zorumski, and Y. Izumi, "Downregulation of glutamine synthetase via GLAST suppression induces retinal axonal swelling in a rat ex vivo hydrostatic pressure model," *Investigative Ophthalmology & Visual Science*, vol. 52, no. 9, pp. 6604–6616, 2011.
- [118] M. Vidal-Sanz, M. Salinas-Navarro, F. M. Nadal-Nicolás et al., "Understanding glaucomatous damage: anatomical and functional data from ocular hypertensive rodent retinas," *Progress in Retinal and Eye Research*, vol. 31, no. 1, pp. 1–27, 2012.
- [119] P. J. Hollenbeck and W. M. Saxton, "The axonal transport of mitochondria," *Journal of Cell Science*, vol. 118, no. 23, pp. 5411–5419, 2005.
- [120] W.-K. Ju, J. D. Lindsey, M. Angert, A. Patel, and R. N. Weinreb, "Glutamate receptor activation triggers OPA1 release and

- induces apoptotic cell death in ischemic rat retina," *Molecular Vision*, vol. 14, pp. 2629–2638, 2008.
- [121] W.-K. Ju, Q. Liu, K.-Y. Kim et al., "Elevated hydrostatic pressure triggers mitochondrial fission and decreases cellular ATP in differentiated RGC-5 cells," *Investigative Ophthalmology and Visual Science*, vol. 48, no. 5, pp. 2145–2151, 2007.
- [122] W.-K. Ju, K.-Y. Kim, J. D. Lindsey et al., "Elevated hydrostatic pressure triggers release of OPA1 and cytochrome C, and induces apoptotic cell death in differentiated RGC-5 cells," *Molecular Vision*, vol. 15, pp. 120–134, 2009.
- [123] D. G. Nicholls and M. W. Ward, "Mitochondrial membrane potential and neuronal glutamate excitotoxicity: mortality and millivolts," *Trends in Neurosciences*, vol. 23, no. 4, pp. 166–174, 2000.
- [124] W.-K. Ju, K.-Y. Kim, M. Angert et al., "Memantine blocks mitochondrial OPA1 and cytochrome c release and subsequent apoptotic cell death in glaucomatous retina," *Investigative Ophthalmology and Visual Science*, vol. 50, no. 2, pp. 707–716, 2009.
- [125] M. M. Y. Fan and L. A. Raymond, "N-Methyl-d-aspartate (NMDA) receptor function and excitotoxicity in Huntington's disease," *Progress in Neurobiology*, vol. 81, no. 5–6, pp. 272–293, 2007.
- [126] M. F. Beal, "Aging, energy, and oxidative stress in neurodegenerative diseases," *Annals of Neurology*, vol. 38, no. 3, pp. 357–366, 1995.
- [127] R. C. Henneberry, A. Novelli, J. A. Cox, and P. G. Lysko, "Neurotoxicity at the N-methyl-D-aspartate receptor in energy-compromised neurons. An hypothesis for cell death in aging and disease," *Annals of the New York Academy of Sciences*, vol. 568, pp. 225–233, 1989.
- [128] T. Nakamura, P. Cieplak, D.-H. Cho, A. Godzik, and S. A. Lipton, "S-Nitrosylation of Drp1 links excessive mitochondrial fission to neuronal injury in neurodegeneration," *Mitochondrion*, vol. 10, no. 5, pp. 573–578, 2010.
- [129] J. W. Y. Yau, S. L. Rogers, R. Kawasaki et al., "Global prevalence and major risk factors of diabetic retinopathy," *Diabetes Care*, vol. 35, no. 3, pp. 556–564, 2012.
- [130] C. Hernández and R. Simó, "Neuroprotection in diabetic retinopathy," *Current Diabetes Reports*, vol. 12, no. 4, pp. 329–337, 2012.
- [131] A. R. Cervantes-Villagrana, J. Garcia-Román, C. Gonzalez-Espinosa, and M. Lamas, "Pharmacological inhibition of n-methyl d-aspartate receptor promotes secretion of vascular endothelial growth factor in müller cells: effects of hyperglycemia and hypoxia," *Current Eye Research*, vol. 35, no. 8, pp. 733–741, 2010.
- [132] J. Kusari, S. X. Zhou, E. Padillo, K. G. Clarke, and D. W. Gil, "Inhibition of vitreoretinal VEGF elevation and blood-retinal barrier breakdown in streptozotocin-induced diabetic rats by brimonidine," *Investigative Ophthalmology and Visual Science*, vol. 51, no. 2, pp. 1044–1051, 2010.
- [133] J. Ambati, K. V. Chalam, D. K. Chawala et al., "Elevated γ -aminobutyric acid, glutamate, and vascular endothelial growth factor levels in the vitreous of patients with proliferative diabetic retinopathy," *Archives of Ophthalmology*, vol. 115, no. 9, pp. 1161–1166, 1997.
- [134] Q. Li and D. G. Puro, "Diabetes-induced dysfunction of the glutamate transporter in retinal Müller cells," *Investigative Ophthalmology and Visual Science*, vol. 43, no. 9, pp. 3109–3116, 2002.
- [135] D. G. Puro, "Diabetes-induced dysfunction of retinal Müller cells," *Transactions of the American Ophthalmological Society*, vol. 100, pp. 339–352, 2002.
- [136] J. C. Lau, R. A. Kroes, J. R. Moskal, and R. A. Linsenmeier, "Diabetes changes expression of genes related to glutamate neurotransmission and transport in the Long-Evans rat retina," *Molecular Vision*, vol. 19, pp. 1538–1553, 2013.
- [137] K. Zeng, H. Xu, M. Mi et al., "Dietary taurine supplementation prevents glial alterations in retina of diabetic rats," *Neurochemical Research*, vol. 34, no. 2, pp. 244–254, 2009.
- [138] K. C. Silva, M. A. Rosales, D. E. Hamassaki et al., "Green tea is neuroprotective in diabetic retinopathy," *Investigative Ophthalmology & Visual Science*, vol. 54, no. 2, pp. 1325–1336, 2013.
- [139] Y. Xu-hui, Z. Hong, W. Yu-hong, L. Li-juan, T. Yan, and L. Ping, "Time-dependent reduction of glutamine synthetase in retina of diabetic rats," *Experimental Eye Research*, vol. 89, no. 6, pp. 967–971, 2009.



Hindawi

Submit your manuscripts at
<http://www.hindawi.com>

