

## RESEARCH ARTICLE

# Acute kidney injury and acute kidney recovery following Transcatheter Aortic Valve Replacement

Marilou Peillex<sup>1</sup>, Benjamin Marchandot<sup>1</sup>, Kensuke Matsushita<sup>1,2</sup>, Eric Prinz<sup>3</sup>, Sebastien Hess<sup>1</sup>, Antje Reydel<sup>1</sup>, Marion Kibler<sup>1</sup>, Adrien Carmona<sup>1</sup>, Antonin Trimaille<sup>1</sup>, Joe Heger<sup>1</sup>, H el ene Petit-Eisenmann<sup>1</sup>, Annie Trinh<sup>1</sup>, Laurence Jesel<sup>1,2</sup>, Patrick Ohlmann<sup>1</sup>, Olivier Morel<sup>1,2\*</sup>

**1** Division of Cardiovascular Medicine, Nouvel H opital Civil, Strasbourg University Hospital, Strasbourg, France, **2** INSERM (French National Institute of Health and Medical Research), UMR 1260, Regenerative Nanomedicine, FMTS, Strasbourg, France, **3** Department of Nephrology, Nouvel H opital Civil, Strasbourg University Hospital, Strasbourg, France

\* [olivier.morel@chru-strasbourg.fr](mailto:olivier.morel@chru-strasbourg.fr)



## OPEN ACCESS

**Citation:** Peillex M, Marchandot B, Matsushita K, Prinz E, Hess S, Reydel A, et al. (2021) Acute kidney injury and acute kidney recovery following Transcatheter Aortic Valve Replacement. PLoS ONE 16(8): e0255806. <https://doi.org/10.1371/journal.pone.0255806>

**Editor:** Vincenzo Lionetti, Scuola Superiore Sant'Anna, ITALY

**Received:** January 9, 2021

**Accepted:** July 25, 2021

**Published:** August 10, 2021

**Peer Review History:** PLOS recognizes the benefits of transparency in the peer review process; therefore, we enable the publication of all of the content of peer review and author responses alongside final, published articles. The editorial history of this article is available here: <https://doi.org/10.1371/journal.pone.0255806>

**Copyright:**  2021 Peillex et al. This is an open access article distributed under the terms of the [Creative Commons Attribution License](https://creativecommons.org/licenses/by/4.0/), which permits unrestricted use, distribution, and reproduction in any medium, provided the original author and source are credited.

**Data Availability Statement:** The data underlying the results presented in the study are the property of the H opitaux Universitaires de Strasbourg. Furthermore, currently, we do not have

## Abstract

### Background

Acute kidney injury (AKI) is associated with a dismal prognosis in Transcatheter Aortic Valve replacement (TAVR). Acute kidney recovery (AKR), a phenomenon reverse to AKI has recently been associated with better outcomes.

### Methods

Between November 2012 to May 2018, we explored consecutive patients referred to our Heart Valve Center for TAVR. AKI was defined according to the VARC-2 definition. Mirroring the VARC-2 definition of AKI, AKR was defined as a decrease in serum creatinine ( $\geq 50\%$ ) or  $\geq 25\%$  improvement in GFR up to 72 hours after TAVR.

### Results

AKI and AKR were respectively observed in 8.3 and 15.7% of the 574 patients included. AKI and AKR patients were associated to more advanced kidney disease at baseline. At a median follow-up of 608 days (range 355–893), AKI and AKR patients experienced an increased cardiovascular mortality compared to unchanged renal function patients (14.6% and 17.8% respectively, vs. 8.1%, CI 95%,  $p < 0.022$ ). Chronic kidney disease, (HR: 3.9; 95% CI 1.7–9.2;  $p < 0.001$ ) was the strongest independent factor associated with AKI similarly to baseline creatinine level (HR: 1; 95% CI 1 to 1.1  $p < 0.001$ ) for AKR. 72-hours post procedural AKR (HR: 2.26; 95% CI 1.14 to 4.88;  $p = 0.021$ ) was the strongest independent predictor of CV mortality.

authorization to share any personal data with third external parties as the French legislation (Jardé law) does not allow a free sharing of human research participant data. Patients could be potentially identified based their age, sex, type of outcomes etc. in a single center study. Data could be made available upon request by submitting an email to President of the Scientific Board - Committee for Scientific Research of Hôpitaux Universitaires de Strasbourg, 1, place de l'hôpital, BP 426, 67091 Strasbourg cedex. Email: [emmanuel.andres@chrustrasbourg.fr](mailto:emmanuel.andres@chrustrasbourg.fr).

**Funding:** This work was supported by GERCA (Groupe pour l'Enseignement, la Recherche cardiologique en Alsace).

**Competing interests:** The authors have declared that no competing interests exist.

**Abbreviations:** ACE inhibitor, Angiotensin-converting enzyme inhibitor; AF, Atrial Fibrillation; AKI, Acute Kidney Injury; AKR, Acute Kidney Recovery; APT, Antiplatelet Therapy; ARBs, Angiotensin II Receptor Blockers; AS, Aortic stenosis; AVR, Aortic Valve Replacement; BMI, Body Mass Index; CAD, Coronary Artery Disease; CKD, Chronic Kidney Disease; COPD, Chronic Obstructive Pulmonary Disease; CRP, C-protein reactive; DAPT, Dual Antiplatelet Therapy; ECG, Electrocardiogram; EuroSCORE, Logistic EuroSCORE predicted risk of mortality at 30 days; GRF, Glomerular Filtration Rate; Hb, Haemoglobin Level; HF, Heart Failure; LV, Left Ventricle; LVEF, Left Ventricular Ejection Fraction; MACE, Major Adverse Cardiac Events; NOACs, Novel Oral Anticoagulant; TAVR, Transcatheter Aortic Valve Replacement; TTE, Transthoracic Echocardiography; VARC-2, Valve Academic Research Consortium-2 consensus.

## Conclusions

Both AKR and AKI negatively impact long term clinical outcomes of patients undergoing TAVR.

## Introduction

Acute kidney injury (AKI) is a frequent complication following transcatheter aortic valve replacement (TAVR) and is associated with poor prognosis. The reported incidence of post TAVR AKI is  $22.1\% \pm 11.2$  based on the Valve Academic Research Consortium-2 (VARC-2) definition [1,2]. Several risk factors of post procedural AKI have been identified including impaired baseline renal function, hemodynamic instability, sustained pacing, use of contrast medium, length of procedure and post procedural complications such as severe bleeding [3].

Acute kidney recovery (AKR), a phenomenon reverse to AKI has recently been investigated [4–6]. Indeed, TAVR represents a unique therapeutic modality in allowing instant reduction of the trans-aortic gradient, normalization of the aortic valve area and normalization of altered post-stenotic blood flow. In a kidney's perspective, rapid hemodynamic changes after TAVR including increased cardiac output, reduced left ventricular (LV) afterload and renal congestion may result in acute recovery of kidney function. So far, limited data exists on AKR and the entire spectrum of renal variations after TAVR including altered, unchanged or improved renal function. Therefore, this study aimed to investigate the incidence, predictors and prognostic impact of AKI and AKR amongst TAVR patients in a high-volume French hospital.

## Methods

### Patients

584 patients with severe aortic stenosis (AS) and high or intermediate surgical risk according to Logistic EuroSCORE were enrolled for TAVR at our institution (Nouvel Hôpital Civil, Strasbourg University, France) from November 2012 to May 2018. 10 patients with end-stage renal disease and ongoing dialysis were excluded. All participants gave their informed written consent and agreed to the anonymous processing of their data (France 2 registry IRB Information 911262). The FRANCE-2 registry (French Aortic National Corevalve and Edwards) is conducted by the French Society of Cardiology and the French Society of Thoracic and Cardiovascular Surgery. The study was approved by the CNIL's (Commission Nationale de l'Informatique et des Libertés) committee (ethical code number 911262).

### Definition of Acute kidney injury (AKI) and Acute kidney recovery (AKR)

Acute kidney injury (AKI) was defined according to the VARC-2 definition [1] as an absolute increase in serum creatinine  $\geq 0.3$  mg/dL ( $\geq 26.4$  mmol/L) OR  $\geq 50\%$  increase in serum creatinine up to 72 hours after TAVR.

As there is currently no consensual definition of AKR, we partially followed the definition proposed by Azarbal et al. [4] and mirroring the VARC-2 definition of AKI. Therefore AKR was defined 1) as an absolute decrease in serum creatinine to  $\geq 50\%$  ( $\geq 0.50$  decrease compared with baseline) up to 72 hours after the procedure OR 2) a  $\geq 25\%$  improvement in eGFR over 72 hours after the procedure or 3) a decrease of  $\geq 0.3$  mg/dL in serum creatinine over 72 hours after TAVR. Patients with unchanged renal function were those who had neither AKI nor AKR post-TAVR.

## Collection of data and outcomes

All baseline and follow-up variables were recorded and entered into a secure, ethics-approved database. Creatinine was systematically collected up to 72 hours in all patients after TAVR. Clinical endpoint including mortality, stroke, bleeding, access-related complications and conduction disturbances were assessed according to the definitions provided by the VARC-2 guidelines. All clinical events were adjudicated by an events validation committee.

The primary endpoint of the study was the incidence of AKI and AKR 72 hours after the procedure. The secondary endpoints included all-cause mortality; a composite endpoint defined by cardiovascular mortality (defined as any death with demonstrable cardiovascular cause or any death that was not clearly attributable to a non-cardiovascular cause), stroke, myocardial infarction and rehospitalization for heart failure (defined as any event requiring the administration of intravenous therapy); and finally bleeding complications assessed according to VARC-2 definition and red blood cell transfusion  $\geq$  2 Units requirement. These endpoints were compared across 3 categories: patients with AKI, AKR and unchanged renal function patients.

All patients were contacted by phone and questioned by a standardized questionnaire about their health status, symptoms, medications and the occurrence of adverse events.

## Statistical analysis

Quantitative variables were described according to AKI, AKR or unchanged renal function and expressed as means  $\pm$  standard deviation. Categorical variables were expressed as counts and percentages. Categorical variables were compared with chi-square tests or Fisher's exact tests. Continuous variables were compared with the use of parametric (ANOVA) or non-parametric Mann-Whitney tests as appropriate. To determine predictors of AKI and AKR regression analysis was performed. Variables with  $p < 0.05$  in univariate analysis were entered into a stepwise ascending multivariate analysis. Only one variable relating to chronic impairment of renal function was entered into the multivariate analysis model. Owing to collinearity between impairment of renal function and other parameters such as for example: EuroSCORE, chronic kidney disease etc. multivariate analysis was performed with only one variable relating to chronic renal function impairment. Calculations were performed using SPSS 17.0 for Windows (SPSS Inc., Chicago, IL, USA).

## Results

A total of 574 TAVR patients (mean age  $83.1 \pm 7.4$ , 43.6% male, LVEF 54% and EuroScore II  $22.8 \pm 14.4$ ) were included in the analysis. Mean baseline serum creatinine concentration was  $112 \pm 52$   $\mu\text{mol/L}$  and 17.3% of the global cohort had chronic kidney disease (CKD) as defined by baseline creatinine  $> 150 \mu\text{mol/L}$ . Most patients showed baseline CKD stage 3 (46% of the global cohort) and stage 4/5 (10.6% of the global cohort). Balloon and self-expandable devices were implanted in 352 (61.4%) and 222 (38.6%) patients respectively. No difference in contrast media volume administration was evidenced. Baseline, procedural and biological characteristics are summarized in Tables 1–3.

## Acute kidney injury, Acute kidney recovery and unchanged renal function

AKI was documented for 8.3%, AKR for 15.7% and unchanged renal function for 76% of the global cohort (Fig 1). Patients with AKI were associated with higher creatinine level at baseline ( $p < 0.001$ ) and more frequent chronic kidney disease as defined by serum creatinine level  $> 150 \mu\text{mol/L}$  ( $p < 0.001$ ) and history of atrial fibrillation ( $p = 0.07$ ). No significant

Table 1. Baseline characteristics.

	Global Cohort	Unchanged	AKI	AKR	p value
	n = 574	n = 436	n = 48	n = 90	
<b>Clinical parameters</b>					
Age—year	83.1±7.4	83.1±7.4	84.5±4.8	82.4±8.4	0.28
Male sex—no./total no. (%)	250(43.6%)	194(44.6%)	24(50%)	32(35.6%)	0.19
BMI—kg.m <sup>2</sup>	26.8±6.5	26.6±5.3	25.8±4.9	28±9.6	0.73
Hypertension	432 (75.3)	327 (75.7)	37 (77.1)	68 (75.6)	0.948
Diabetes mellitus	154 (26.8)	106 (24.3)	16 (33.3)	32 (35.6)	0.051
EuroSCORE (%)	22.8±14.4	22±14.1	25.6±15.6	25.2±14.8	0.2
COPD	93 (16.3%)	74(17.1%)	10(20.8%)	9(10%)	0.17
Stroke history	81 (14.1%)	58(13.3%)	8(16.7%)	15(16.7%)	0.62
AF history	238(41.5%)	170(39.1%)	26(54.2%)	42(46.7%)	0.07
NYHA II	234(40.8%)	185(42.5%)	17(35.4%)	32(35.6%)	0.34
NYHA III	281(48.9%)	211(48.3%)	25(52.1%)	45(50%)	0.86
NYHA IV	59(10.3%)	40(9.2%)	6(12.5%)	13(14.4%)	0.29
<b>Baseline ECG</b>					
Sinus rhythm	421(73.5%)	317(72.9%)	37(77.1%)	67(74.4%)	0.8
Paced rhythm	40(7%)	31(7.1%)	4(8.3%)	5(5.6%)	0.81
AF	149(26%)	115(26.4%)	11(12.5%)	23(25.6%)	0.07
LBBB	101(17.6%)	74(17%)	10(20.8%)	17(18.9%)	0.76
RBBB	74(12.9%)	52(12%)	6(12.5%)	16(17.8%)	0.32
<b>Baseline biological parameters</b>					
CKD (Creatinine>150umol/L)	99(17.3%)	52(12%)	22(45.8%)	25(27.8%)	<0.001
Creatinine level (μmol.L)	112±52	103±39	136±77	144±72	<0.001
eGRF Stage 1 -n (%)	63(11)	56 (12.9)	6(12.5)	1(1.1)	<0.001
eGRF Stage 2 -n (%)	187 (32.6)	163 (37.5)	9(18.8)	15 (16.7)	
eGRF Stage 3A -n (%)	149 (26)	112 (25.7)	11 (22.9)	26 (28.9)	
eGRF Stage 3B -n (%)	113 (19.7)	79 (18.2)	9 (18.8)	25 (27.8)	
eGRF Stage 4 -n (%)	55 (9.6)	24 (5.5)	12 (25)	19 (21.1)	
eGRF Stage 5 -n (%)	6 (1)	1 (0.2)	1 (2.1)	4 (4.4)	
Hb (g/dL)	12.2±1.7	12.1±1.7	12.6±1.6	12.1±1.5	0.24
Platelets (10 <sup>9</sup> /L)	224±73	225±71	218±86	225±74	0.82
CT-ADP	192±77	191±77	180±74	200±78	0.36
<b>Echocardiography</b>					
LVEF (%)	54±14	55±13	52±15	53±14	0.23
LV mass—g.m <sup>2</sup>	131±35	130±37	130±24	132±34	0.93
LVendDV (mm)	50±8	50±8	52±7	51±9	0.2
Mean Gradient (mmHg)	48±13	47±13	46±10	49±14	0.44
Pulmonary arterial pressure	40.7±14	40±13	41±13.5	42±16	0.62
CT-derived aortic valve calcification score	3388±1662	3348±1665	3392±1453	3580±1828	0.81

Abbreviations: AF: Atrial Fibrillation; AKI: Acute Kidney Injury; AKR: Acute Kidney Recovery; APT: Antiplatelets therapy; BMI: Body Mass Index; CKD: Chronic kidney disease; COPD: Chronic Obstructive Pulmonary Disease; CT: Computed tomography; CT-ADP: Closure time of adenosine diphosphate; ECG: Electrocardiogram; eGRF: Estimated Glomerular Filtration Rate; Stage 1 with normal or high GFR (GFR > 90 mL/min); Stage 2 Mild CKD (GFR = 60–89 mL/min); Stage 3A Moderate CKD (GFR = 45–59 mL/min); Stage 3B Moderate CKD (GFR = 30–45mL/min); Stage 4 Severe CKD (GFR = 15–29 mL/min); Stage 5 End Stage CKD (GFR <15 mL/min); Hb: hemoglobin; LBBB: Left bundle branch block; LV: Left Ventricular; LVendDV: Left Ventricular diastolic diameter; LVEF: Left ventricular ejection fraction; NYHA: New York Heart Association functional class; RBBB: Right bundle branch block; TAVR: Transcatheter Aortic Valve Replacement.

<https://doi.org/10.1371/journal.pone.0255806.t001>

Table 2. Procedural characteristics.

	Global Cohort	Unchanged	AKI	AKR	p value
	n = 574	n = 436	n = 48	n = 90	
<b>Balloon valvuloplasty before TAVR</b>	39(6.8%)	27(6.2%)	2(4.2%)	10(11.1%)	0.18
<b>Approach</b>					
Transfemoral - no./total no. (%)	512(89.5%)	396(91%)	38(80.9%)	78(86.7%)	0.061
<b>Valve</b>					
Sapien - no./total no. (%)	352(61.4%)	276(63.4%)	26(54.2%)	50(55.6%)	0.21
<b>Size Valve</b>					
23 mm - no./total no. (%)	170(29.7%)	131(30.1%)	13(27.1%)	26(28.9%)	0.89
26 mm - no./total no. (%)	196(34.2%)	153(35.2%)	15(31.3%)	28(31.1%)	0.68
29 mm - no./total no. (%)	177(30.9%)	132(30.3%)	14(29.2%)	31(34.4%)	0.72
31 mm - no./total no. (%)	21(3.7%)	13(3%)	5(10.4%)	3(3.3%)	0.034
34 mm - no./total no. (%)	8(1.4%)	5(1.1%)	1(2.1%)	2(2.2%)	0.67
Post Dilatation - no./total no. (%)	61(10.6%)	44(10.1%)	5(10.4%)	12(13.3%)	0.67
<b>Procedure</b>					
Contrast Volume (mL)	159±56	157±54	177±62	159±56	0.11
Procedure time (min)	82±25	80±24	87±21	87±28	0.024

Abbreviations: AKI: Acute Kidney Injury; AKR: Acute Kidney Recovery; TAVR: Transcatheter Aortic Valve Replacement.

<https://doi.org/10.1371/journal.pone.0255806.t002>

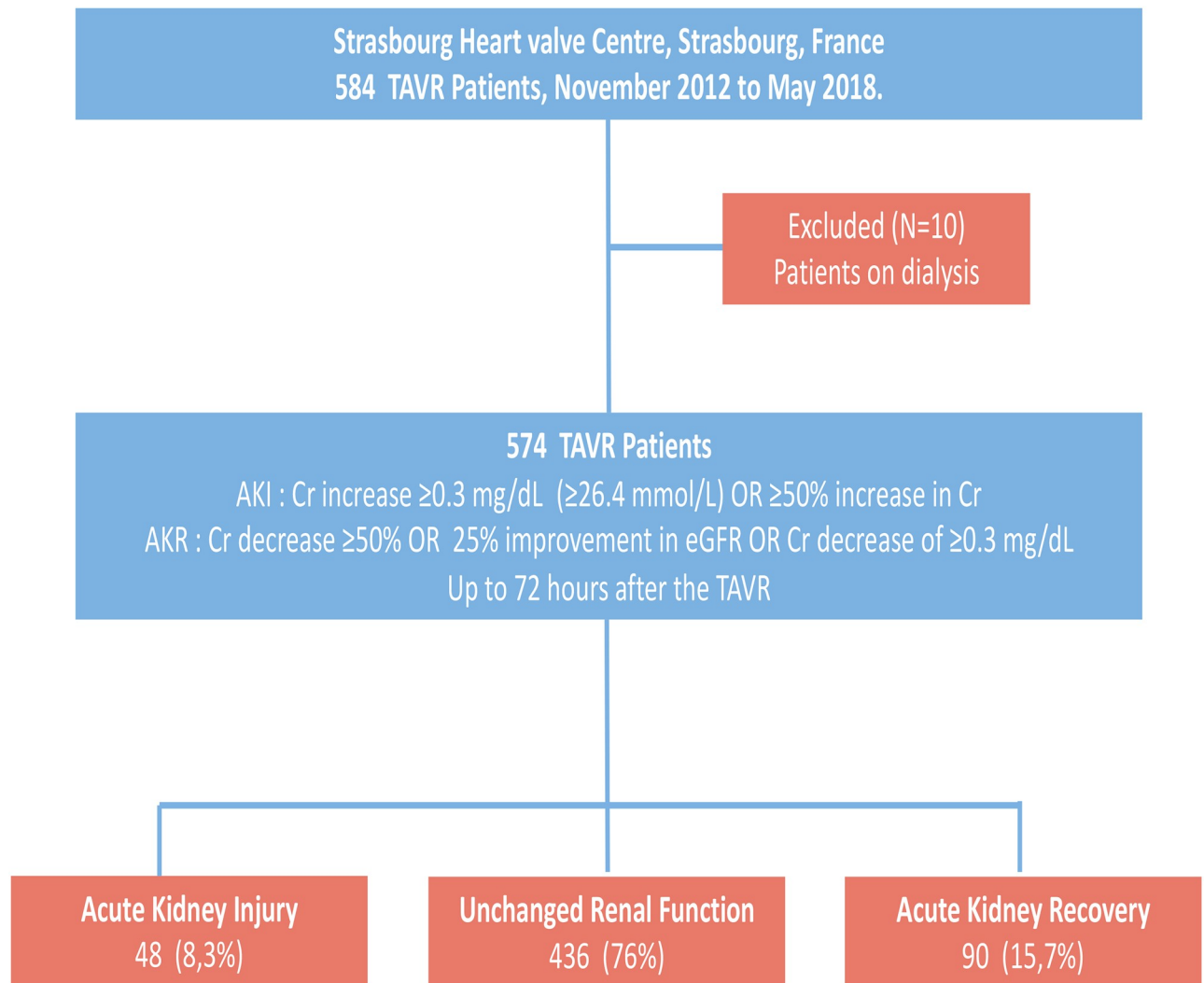
difference was noted according to the time of procedure (S1 Table). Post procedural bleeding, red blood cell transfusions and cardiovascular (CV) cause of death occurred more frequently in the AKI group. AKR patients experienced higher creatinine level at baseline. Similarly to AKI patients, the AKR group showed increased CV mortality rates compared to unchanged renal

Table 3. Biological parameters.

	Global Cohort	Unchanged	AKI	AKR	p value
	n = 574	n = 436	n = 48	n = 90	
<b>Creatinine level (μmol/L)</b>					
Baseline	112±52	103±39	136±77	144±72	<0.001
Post TAVR - Day 1	104±54	95±37	168±103	115±63	<0.001
Post TAVR - Day 3	106±54	98±39	177±89	106±63	<0.001
<b>Hb (g/dL)</b>					
Baseline	12.2±1.7	12.1±1.7	12.6±1.6	12.1±1.5	0.24
Post TAVR - Day 1	10.8±1.6	10.8±1.6	11.3±1.7	10.8±1.5	0.2
<b>Platelets (10<sup>9</sup>/L)</b>					
Baseline	224±73	225±71	218±86	225±74	0.82
Post TAVR - Day 1	178±60	178±57	180±70	177±64	0.96
<b>WBC Count (10<sup>9</sup>/L)</b>					
Baseline	7.6±3.3	7.5±2.9	8.8±6.4	7.6±2.3	0.08
Post TAVR - Day 1	9±3.4	9±3.5	8.8±3	9.2±3.3	0.77
<b>CRP (mg/L)</b>					
Baseline	9.8±12.2	9.2±11.1	12.4±13.4	11.2±15.9	0.17
Post TAVR - Day 1	21.5±24.9	20.2±33.9	20.8±32.2	23.5±42.2	0.23

Abbreviations: AKI: Acute Kidney Injury; AKR: Acute Kidney Recovery; CRP: C-reactive protein; Hb: haemoglobin; TAVR: Transcatheter Aortic Valve Replacement; WBC: white blood cell.

<https://doi.org/10.1371/journal.pone.0255806.t003>



**Fig 1. Flow chart of the study.** Acute kidney injury and Acute kidney recovery following TAVR in a large cohort registry. Among 574 TAVR patients, Acute Kidney Injury (AKI) was documented for 8.3%, Acute Kidney Recovery (AKR) for 15.7% and unchanged renal function for 76% of the global cohort.

<https://doi.org/10.1371/journal.pone.0255806.g001>

function patients. No significant differences in all-cause mortality nor other secondary MACE were evidenced between the three subsets of patients. All-cause mortality and cardiovascular events according to renal function variations after TAVR are listed in [Table 4](#).

At a median follow-up of 608 days (range 355–893), AKI and AKR patients experienced an increased cardiovascular mortality compared to unchanged renal function patients (14.6% and 17.8% respectively, vs. 8.1%, CI 95%,  $p < 0.022$ ) ([Fig 2](#)). No difference regarding all-cause mortality, non-CV death and MACE could be evidenced between the three subsets of patients ([Fig 3A-3C](#)).

### Predictors of AKI, AKR and cardiovascular mortality following TAVR

By univariate Cox analysis, EuroSCORE, chronic kidney disease (as defined by creatinine level  $> 150 \mu\text{mol/L}$ ), baseline creatinine level, contrast volume, bleeding (both immediate and

**Table 4. Impact of Acute kidney injury and recovery on all-cause mortality and cardiovascular events.**

	Global Cohort	Unchanged	AKI	AKR	p value
	n = 574	n = 436	n = 48	n = 90	
Death from any cause	125(21.8%)	86(19.8%)	13(27.1%)	26(28.9%)	0.106
CV Death	58 (10.1%)	44(8.1%)	7(14.6%)	16(17.8%)	0.012
Non-CV Death	62(10.8%)	50(11.5%)	5(10.4%)	7(7.8%)	0.61
Rehospitalization for HF	103(18%)	70(16.1%)	11(22.9%)	22(24.7%)	0.101
Myocardial Infarction	14(2.4%)	7(1.6%)	3(6.3%)	4(4.5%)	0.056
Stroke	45(7.9%)	29(6.7%)	7(14.6%)	9(10.1%)	0.107
MACE (Cardiovascular death, Rehospitalisation for HF, Stroke and/or infarct)	186(32.4%)	132(30.3%)	17(35.4%)	37(41%)	0.125
Post procedural bleeding					
Immediate all cause post procedural bleeding	170(29.7%)	113(26%)	24(50%)	33(36.7%)	0.001
Major and Life threatening Bleeding	68(11.9%)	44(10.1%)	11(22.9%)	13(14.4%)	0.024
Life threatening Bleeding	31(5.4%)	14(3.2%)	7(14.6%)	10(11.1%)	<0.001
Red blood cell transfusion >2Units	113(19.7%)	68(15.6%)	19(39.6%)	26(28.9%)	<0.001
Minor bleeding	71(12.4%)	55(12.6%)	6(12.5%)	10(11.1%)	0.93
Major and Life threatening Bleeding during ICU stay	99(17.3%)	58(13.3%)	18(37.5%)	23(25.6%)	<0.001
Bleeding at any time after discharge	131(22.9%)	89(20.5%)	19(39.6%)	23(25.6%)	0.009

Abbreviations: AKI: Acute Kidney Injury; AKR: Acute Kidney Recovery; CV: Cardiovascular; HF: Heart failure; ICU: intensive care unit; MACE: major adverse cardiovascular events; TAVR: Transcatheter Aortic Valve Replacement.

<https://doi.org/10.1371/journal.pone.0255806.t004>

major/life-threatening bleeding) were significant predictors of AKI (Table 5). In multivariate analysis, chronic kidney disease, (HR: 3.9; 95% CI 1.7–9.2;  $p < 0.001$ ) remained the strongest independent factor associated with AKI.

By univariate Cox analysis, baseline creatinine level, procedure duration and major/ life-threatening bleeding were significant predictors of AKR (Table 6). In multivariate analysis, baseline creatinine level (HR: 1; 95% CI 1 to 1.1  $p < 0.001$ ) remained the sole independent predictor of AKR.

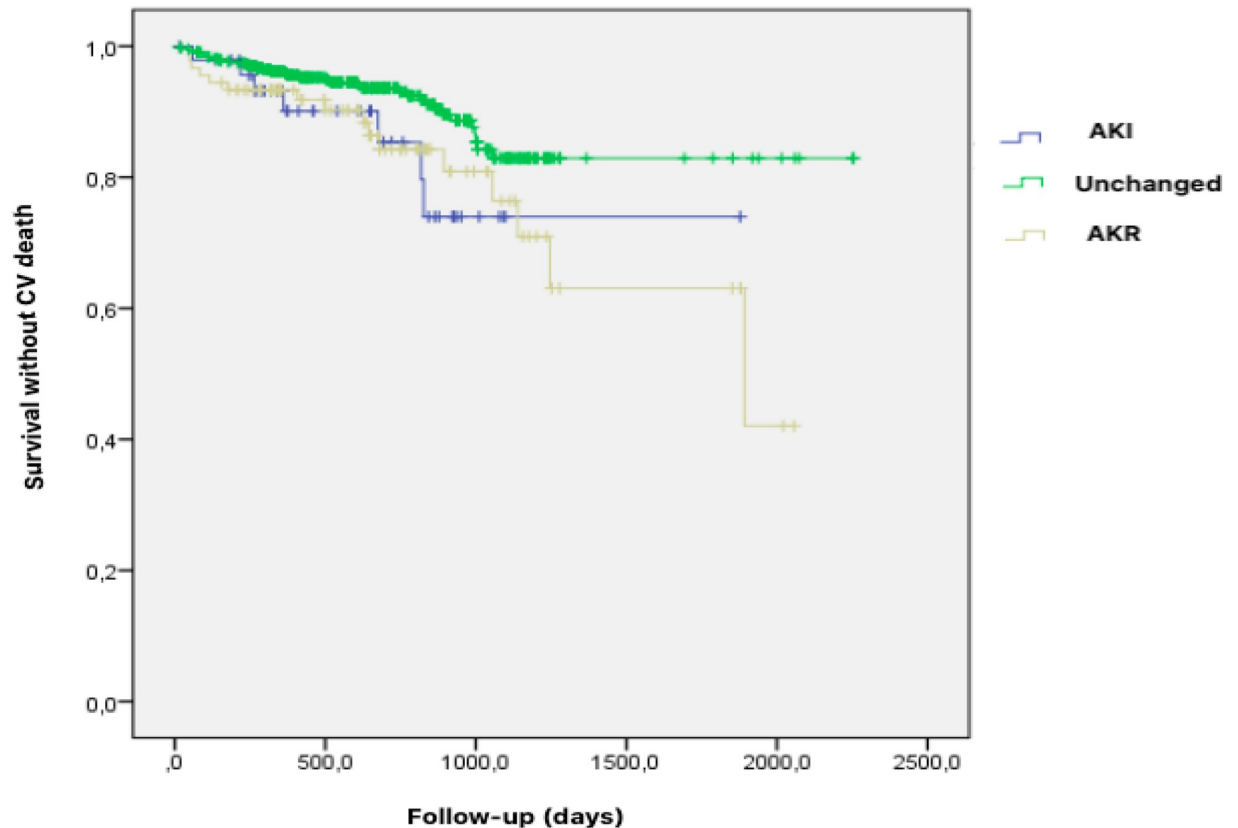
By univariate Cox analysis, chronic obstructive pulmonary disease (COPD), post procedural CRP level, and 72-hours post procedural AKR were significant predictors of CV mortality (Table 7). In multivariate analysis, COPD (HR: 2.4; 95% CI 1.17–4.95;  $p = 0.017$ ) and 72-hours post procedural AKR (HR: 2.26; 95% CI 1.14 to 4.88;  $p = 0.021$ ) remained strong independent of predictor of CV mortality.

## Discussion

To our knowledge, this is the first report highlighting a possible detrimental effect of post-TAVR acute kidney recovery. The salient results of the present study are as follows: (i) AKI was documented for 8.3% and AKR occurred in 15.7% of patients based upon Creatinine and/ or eGFR assessment and definitions, (ii) Both AKI and AKR had a dismal impact on CV mortality, (iii) baseline creatinine level was a strong and independent predictor associated to both AKI and AKR and finally (iv) 72-hours post procedural AKR was a strongest independent predictor of CV mortality.

### Acute kidney injury

Based on the VARC-2 definition [1], the reported incidence of post TAVR AKI is 22.1%  $\pm$  11.2 [2]. With 8.3% of AKI, our results are consistent with current existing evidence. Development



**Fig 2. Impact of Acute kidney injury (AKI), Acute kidney recovery (AKR) and unchanged renal function after TAVR on cardiovascular death.** Kaplan–Meier analysis for the probability of survival free from cardiovascular (CV) death after TAVR according to renal variations including altered (AKI), unchanged or improved (AKR) renal function. At a median follow-up of 608 days (range 355–893), AKI and AKR patients experienced an increased cardiovascular mortality compared to unchanged renal function patients (14,6% and 17,8% respectively, vs. 8,1%, CI 95%,  $p < 0.022$ ). **Abbreviations:** AKI = Acute Kidney Injury. AKR = Acute Kidney Recovery. CV = Cardiovascular. TAVR = Transcatheter Aortic Valve Replacement.

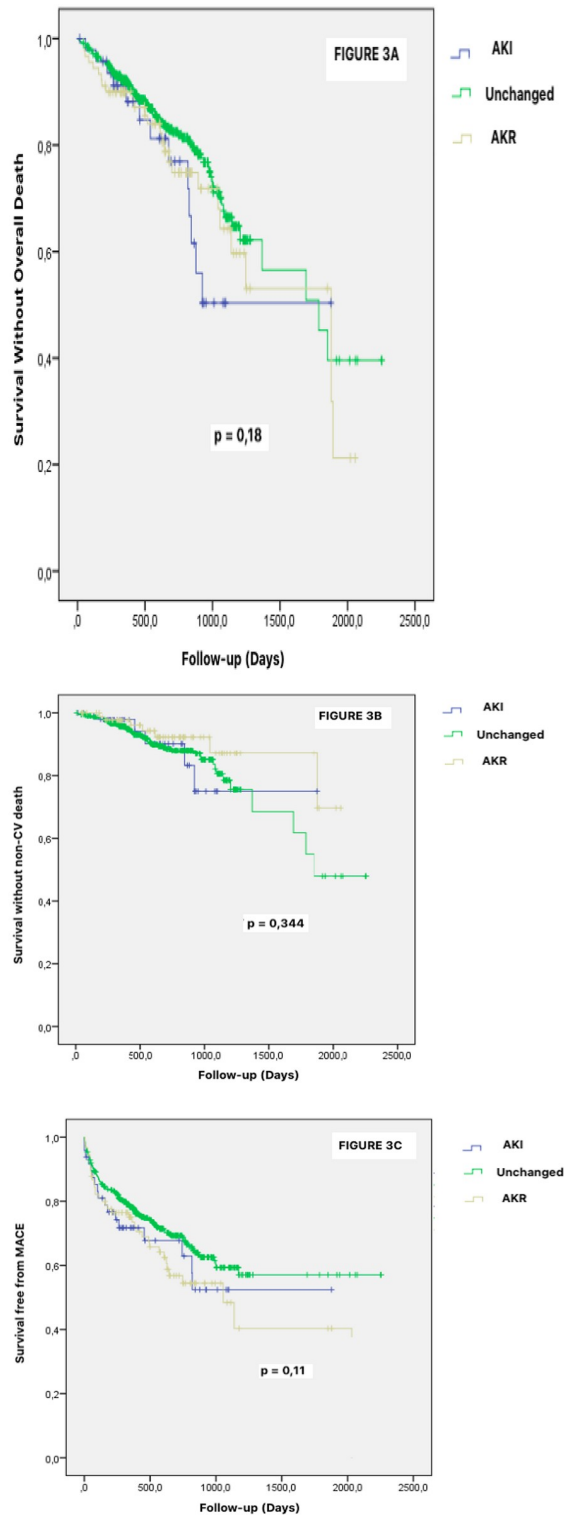
<https://doi.org/10.1371/journal.pone.0255806.g002>

of AKI after TAVR was associated with altered baseline renal function and worse outcomes. Our findings regarding AKI are consistent with prior findings and reports suggesting a strong relationship between red blood cell transfusion, bleedings and vascular complications [7,8]. Conversely, our study did not support a strong relationship between contrast volume nor aortic severity (LVEF, mean aortic gradient) and the development of AKI.

### Acute kidney recovery: Conflicting results with regards to earlier studies

Despite very limited data existing on AKR after TAVR, our intriguing results with increased CV mortality linked to AKR challenge the current evidences supporting a beneficial impact of AKR after TAVR. Based on 1) a 25% improvement in eGFR over 48 hours after the procedure or 2) a decrease of  $\geq 0.3$  mg/dL in serum creatinine over 48 hours after TAVR, Azarbal et al [4] demonstrated that AKR occurred in sizeable proportion (32,5%) of TAVR patients with male sex, lack of chronic beta-blocker utilization and baseline CKD as sole independent predictors of AKR. Nijenhuis et al [5] referred to AKR as a post to pre-TAVR ratio of serum creatinine of  $\leq 0.80$ . AKR was associated with a protective effect on two-year mortality (HR 0.53, 95%CI 0.30–0.93). Independent predictors of AKR were female gender, a preserved kidney function,





**Fig 3. Impact of Acute kidney injury (AKI), Acute kidney recovery (AKR) and unchanged renal function after TAVR on overall death, non-cardiovascular death and MACE.** Kaplan–Meier analysis for the probability of survival free overall death death (Fig 3A), non-cardiovascular death (Fig 3B) and MACE (Fig 3C) after TAVR according to renal variations including altered (AKI) and unchanged or improved (AKR) renal function. **Abbreviations:** AKI = Acute Kidney Injury. AKR = Acute Kidney Recovery. CV = Cardiovascular. TAVR = Transcatheter Aortic Valve Replacement.

<https://doi.org/10.1371/journal.pone.0255806.g003>

Table 5. Predictors of AKI after TAVR.

Predictors of AKI	Univariate	p value	Multivariate
	HR (95% CI)		HR (95% CI)
<b>Baseline Characteristics</b>			
Age	1.033 (0.987–1.082)	0.17	
Male sex	1.317 (0.729–2.380)	0.361	
BMI	0.97(0.83–1.1)	0.69	
EuroSCORE	1.021 (1.004–1.039)	0.015	
Chronic Kidney disease KD (Cr >150μmol.L)	4.934 (2.662–9.145)	<0.001	3.9(1.7–9.2)
Baseline Cr Level	1(1–1.1)	0.002	
Baseline LEVF	0.29 (0.3–2.4)	0.24	
Baseline Mean Aortic Gradient	0.99 (0.97–1)	0.45	
<b>Procedural Characteristics</b>			
Balloon Predilatation prior to TAVR procedure (emergency procedure)	0.57 (0.12–2.4)	0.45	
Transfemoral Approach	0.453 (0.207–0.991)	0.047	1(0.28–4.3)
Contrast volume	1.1 (1–1.1)	0.039	1.2(0.3–4.7)
Duration of procedure	1.1 (0.9–1.1)	0.13	
<b>Post procedural events</b>			
Immediate bleeding	2.6 (1.4–4.7)	0.002	
Major and life-threatening bleeding post TAVR	3.3(1.7–6.2)	0.016	

Abbreviations: AKI Acute Kidney Injury; AKR: Acute Kidney Recovery; CKD: Chronic Kidney Disease; Cr: Creatinine; LVEF: Left ventricular ejection fraction; TAVR: Transcatheter Aortic Valve Replacement.

Only one variable relating to chronic impairment of renal function was entered into the multivariate analysis model.

<https://doi.org/10.1371/journal.pone.0255806.t005>

absence of atrial fibrillation and hemoglobin level. Both studies have stressed the importance of the pathophysiological mechanisms and the adaptive response to hemodynamic changes after TAVR that hint AKR. Indeed, in AS patients: volume overload, low systemic pressures combined with increased central venous and pulmonary artery pressures can compromise renal perfusion and result in type 2 cardiorenal syndrome [9,10].

As TAVR procedure represents a unique therapeutic modality in allowing instant reduction of the trans-aortic gradient, normalization of the aortic valve area and swift reduction of LV overload such interventional procedure offers a unique opportunity to monitor the cardio-renal interactions. We face that the rapid hemodynamic changes that offer TAVR such as correction of diastolic dysfunction, potential improved LVEF and/or cardiac output [11,12] are key determinants paving the way to the pathophysiological explanation of improved renal function in the AKR subgroup. Altogether, the present data identify AKR as a reversible cardio-renal syndrome with a detrimental effect of cardio-renal syndrome widely acknowledged [13,14]. Challenging the initial paradigm of a protective condition of AKR in TAVR, our insights have emphasized the potential noxious impact on CV death of renal reversal changes after TAVR.

### Acute kidney recovery: A kidney perspective of extra-aortic valve cardiac damage?

A new staging for the extent of extra-aortic valve cardiac damage in aortic stenosis was recently proposed by Généreux et al. [15]. This original staging consisted of four stage: Stage 0: no

Table 6. Predictors of AKR after TAVR.

Predictors of AKI	Univariate	p value	Multivariate	p value
	HR (95% CI)		HR (95% CI)	
<b>Baseline characteristics</b>				
Age	0.99 (0.96–1)	0.424		
Male sex	0.66 (0.42–1.1)	0.085		
BMI	1.03 (0.948–1.13)	0.445		
EuroSCORE	1 (0.99–1)	0.24		
Chronic Kidney disease KD (Cr >150μmol.L)	2.16 (1.29–3.63)	0.003		
Baseline Cr Level	1 (1–1.1)	0.002	1 (1–1.1)	<0.001
Baseline LEVF	0.43 (0.089–2.1)	0.3		
Baseline Mean Aortic Gradient	1 (0.99–1)	0.3		
<b>Procedural characteristics</b>				
Balloon Predilatation prior to TAVR procedure (emergency procedure)	1.87(0.88–3.99)	0.1		
Transfemoral Approach	0.75(0.38–1.48)	0.41		
Contrast volume	1 (0.99–1)	0.96		
Duration of procedure	1 (1–1.1)	0.037	1 (0.99–1)	0.37
<b>Post procedural event</b>				
Immediate bleeding	1.54 (0.97–2.45)	0.067		
Major life bleeding post TAVR	2.63(1.19–5.79)	0.016	2.2(0.83–6)	0.109

Abbreviations: AKI: Acute Kidney Injury; AKR: Acute Kidney Recovery; CKD: Chronic Kidney Disease; Cr: Creatinine; LVEF: Left ventricular ejection fraction; TAVR: Transcatheter Aortic Valve Replacement.

Only one variable relating to chronic impairment of renal function was entered into the multivariate analysis model.

<https://doi.org/10.1371/journal.pone.0255806.t006>

extravalvular cardiac damage; Stage 1: left ventricular damage; Stage 2: left atrial or mitral valve damage; Stage 3: pulmonary vasculature damage or significant tricuspid regurgitation and stage 4: right ventricular damage.

Each increment in stage was independently (HR 1.46, 95% CI 1.27–1.67,  $P < 0.0001$ ) associated with increased mortality after aortic valve replacement (AVR). Our study surprisingly found that AKR was associated with increased CV mortality. To date, this novel approach of extra-valvular cardiac damage staging did not include hemodynamic parameters and cardiorenal interactions in particular. Given the interplay between worsening aortic stenosis and kidney function in cardiorenal syndrome, post TAVR AKR is likely to reflect a reversible cardiorenal syndrome and an “extra-cardiac damage” of AS. Importantly in the study by Génèreux et al. [15], the extent of cardiac damage was the strongest predictor of adverse outcomes: normalization of the aortic valve area and hemodynamics instantly occur but the detrimental impact of extravalvular consequences of AS may persist despite AVR [16]. Aortic stenosis may contribute to cardiorenal syndrome that improves with TAVR, but our observation suggests that reversible post TAVR cardiorenal syndrome patients still have increased mortality. The role of extra-valvular cardiac damage staging in aortic valve stenosis management is becoming a topic of interest [17]. Future research may determine the benefit of early TAVR in asymptomatic patients with cardiorenal syndrome [18]. Further studies are also needed to test the incremental value of additional imaging parameters (e.g. intrarenal Doppler ultrasonography [19]), renal and systemic hemodynamic parameters as well as blood biomarkers (e.g. serum Cystatin C) to build an extra cardiac damage staging schemes in the field of TAVR.

Table 7. Predictors of cardiovascular mortality.

Predictors of AKI				
	Univariate	p value	Multivariate	p value
	HR (95% CI)		HR (95% CI)	
<b>Baseline characteristics</b>				
Age	1.04 (0.99–1.09)	0.066		
Male sex	1.25 (0.74–2.09)	0.39		
BMI	0.92 (0.73–1.15)	0.45		
COPD	1.8(1–3.25)	0.049	2.4(1.17–4.95)	0.017
EuroSCORE	1(0.98–1.02)	0.81		
CKD (Cr level >150μmol.L)	2.44(1.41–4.19)	0.001		
AF	1.3(0.74–2.31)	0.35		
<b>Procedural characteristics</b>				
Transfemoral Approach	0.49 (0.25–0.96)	0.04	0.53(0.23–1.2)	0.13
<b>Post procedural characteristics</b>				
Hemoglobin	0.95(0.79–1.14)	0.6		
WBC count	1.04(0.97–1.13)	0.27		
CRP	1 (1.01–1.04)	0.016	1.02(1.01–1.04)	0.063
DAPT	0.58(0.35–0.98)	0.04	0.55(0.29–1.03)	0.06
Mean Aortic Gradient at one-month	0.95(0.89–1)	0.12		
Aortic regurgitation >1/4 at one-month	1.7(0.94–3.28)	0.07		
<b>Post procedural event</b>				
Immediate bleeding	0.81(0.45–1.45)	0.48		
AKI 72 hours	1.79(0.81–3.95)	0.14		
AKR 72 hours	1.82(1.02–3.25)	0.04	2.36(1.14–4.88)	0.021

Abbreviations: AF: Atrial Fibrillation; AKI: Acute Kidney Injury. AKR: Acute Kidney Recovery. CKD: Chronic Kidney Disease. COPD: Chronic Obstructive Pulmonary Disease. Cr: Creatinine; CRP: C-reactive protein; DAPT: Dual Antiplatelet Therapy; LVEF: Left ventricular ejection fraction; TAVR: Transcatheter Aortic Valve Replacement; WBC: White Blood Cell.

Only one variable relating to chronic impairment of renal function was entered into the multivariate analysis model.

<https://doi.org/10.1371/journal.pone.0255806.t007>

## Study limitations

Several limitations should be taken into account in the interpretation of the data. Consensus on the definition of acute kidney recovery is still lacking and standardization of AKR definition would aid communication across the field. We did not challenge the association of acute kidney recovery with cardiac output improvement, and/or LV function recovery. Therefore, we cannot exclude the role of potential confounders, and in particular hemodynamic parameters, that were not accounted for in our model. The limited sample size in each e-GRF subgroup and the relative inhomogeneity in e-GRF subgroups add uncertainty to cardiovascular and renal endpoints, particularly because the pathophysiology of AKI/AKR may differ between groups. Finally, it is a single-centre study with all inherent limitations due to the design of such study.

## Conclusion

Both AKR and AKI negatively impact long term clinical outcomes of patients undergoing transcatheter aortic valve replacement. Both AKI and AKR patients experienced significantly higher cardiovascular mortality than those without a change in renal function. Pre-TAVR

CKD was the strongest independent predictor of post-TAVR AKI while seventy-two hours AKR was the strongest independent predictor of cardiovascular mortality”.

## Supporting information

**S1 Table. AKI, AKR and unchanged renal function according to the time of procedure.** (DOCX)

## Author Contributions

**Conceptualization:** Olivier Morel.

**Data curation:** Marilou Peillex, Sebastien Hess, Antje Reydel, Marion Kibler, Adrien Carmona, Antonin Trimaille, Joe Heger, Hélène Petit-Eisenmann, Annie Trinh, Olivier Morel.

**Formal analysis:** Kensuke Matsushita, Laurence Jesel, Olivier Morel.

**Investigation:** Marilou Peillex, Benjamin Marchandot, Kensuke Matsushita, Eric Prinz, Sebastien Hess, Antje Reydel, Marion Kibler, Adrien Carmona, Antonin Trimaille, Joe Heger, Hélène Petit-Eisenmann, Annie Trinh, Patrick Ohlmann.

**Methodology:** Laurence Jesel, Olivier Morel.

**Project administration:** Olivier Morel.

**Resources:** Marilou Peillex, Eric Prinz, Sebastien Hess, Antje Reydel, Marion Kibler, Adrien Carmona, Antonin Trimaille, Joe Heger, Hélène Petit-Eisenmann, Annie Trinh, Olivier Morel.

**Supervision:** Olivier Morel.

**Validation:** Marilou Peillex, Benjamin Marchandot, Kensuke Matsushita, Eric Prinz, Laurence Jesel, Patrick Ohlmann, Olivier Morel.

**Writing – original draft:** Marilou Peillex, Benjamin Marchandot.

**Writing – review & editing:** Benjamin Marchandot, Kensuke Matsushita, Laurence Jesel, Patrick Ohlmann, Olivier Morel.

## References

1. Kappetein AP, Head SJ, Généreux P, Piazza N, van Mieghem N.M, Blackstone E. H, et al. Valve Academic Research Consortium2. Updated standardized endpoint definitions for transcatheter aortic valve implantation: the ValveAcademic Research Consortium-2 consensus document. *J Thorac Cardiovasc Surg.* 2013 Jan; 145(1):6–23.
2. Gargiulo G, Sannino A, Capodanno D, Perrino C, Capranzano P, Barbanti M, et al. Impact of postoperative acute kidney injury on clinical outcomes after transcatheter aortic valve implantation: A meta-analysis of 5,971 patients. *Catheter Cardiovasc Interv.* 2015 Sep; 86(3):518–27. <https://doi.org/10.1002/ccd.25867> Epub 2015 Feb 17. PMID: 25641565
3. Najjar M, Salna M, George I. Acute kidney injury after aortic valve replacement: incidence, risk factors and outcomes. *Expert Rev Cardiovasc Ther.* 2015; 13(3):301–316. <https://doi.org/10.1586/14779072.2015.1002467> PMID: 25592763
4. Azarbal A, Leadholm KL, Ashikaga T, Solomon RJ, Dauerman HL. Frequency and Prognostic Significance of Acute Kidney Recovery in Patients Who Underwent Transcatheter Aortic Valve Implantation. *Am J Cardiol.* 2018 Mar 1; 121(5):634–641. <https://doi.org/10.1016/j.amjcard.2017.11.043> PMID: 29329828
5. Nijenhuis VJ, Peper J, Vorselaars VMM, Swaans MJ, De Kroon T, Van der Heyden JAS, et al. Prognostic Value of Improved Kidney Function After Transcatheter Aortic Valve Implantation for Aortic Stenosis. *Am J Cardiol.* 2018 May 15; 121(10):1239–1245. <https://doi.org/10.1016/j.amjcard.2018.01.049> Epub 2018 Feb 12. PMID: 29525062

6. Cubeddu R.J, Asher C, Lowry A, Blackstone E.H, Kapadia S, Beohar N, et al. TCT-839 Transcatheter Aortic Valve Replacement for Severe Aortic Stenosis is More Likely to Improve than Worsen CKD Stage: Analysis of the PARTNER 1, 2A, and S3 Trials. *J Am Coll Cardiol*. 2018 Sep, 72 (13 Supplement) B335.
7. Liao YB, Deng XX, Meng Y, Zhao ZG, Xiong TY, Meng XJ, et al. Predictors and outcome of acute kidney injury after transcatheter aortic valve implantation: a systematic review and meta-analysis. *EuroIntervention*. 2017 Apr 20; 12(17):2067–2074. <https://doi.org/10.4244/EIJ-D-15-00254> PMID: 27890858
8. Généreux P, Kodali SK, Green P, Paradis JM, Daneault B, Rene G, et al. Incidence and effect of acute kidney injury after transcatheter aortic valve replacement using the new valve academic research consortium criteria. *Am J Cardiol*. 2013; 111:100–5. <https://doi.org/10.1016/j.amjcard.2012.08.057> PMID: 23040657
9. Rangaswami J, Bhalla V, Blair JEA, Chang TI, Costa S, Lentine KL, et al. American Heart Association Council on the Kidney in Cardiovascular Disease and Council on Clinical Cardiology. Cardiorenal Syndrome: Classification, Pathophysiology, Diagnosis, and Treatment Strategies: A Scientific Statement From the American Heart Association. *Circulation*. 2019 Apr 16; 139(16):e840–e878.
10. Hatamizadeh P, Fonarow G, Budoff M, Darabian S, Kovcsdy C.P., Kalantar-Zadeh K. Cardiorenal syndrome: pathophysiology and potential targets for clinical management. *Nat Rev Nephrol* 9, 99–111 (2013). <https://doi.org/10.1038/nrneph.2012.279> PMID: 23247571
11. Sato K, Kumar A, Jones BM, Mick SL, Krishnaswamy A, Grimm RA, et al. Reversibility of Cardiac Function Predicts Outcome After Transcatheter Aortic Valve Replacement in Patients With Severe Aortic Stenosis. *J Am Heart Assoc*. 2017 Jul 11; 6(7). e005798. <https://doi.org/10.1161/JAHA.117.005798> PMID: 28698259
12. Anjan VY, Herrmann HC, Pibarot P, Stewart WJ, Kapadia S, Tuzcu EM, et al. Evaluation of Flow After Transcatheter Aortic Valve Replacement in Patients With Low-Flow Aortic Stenosis: A Secondary Analysis of the PARTNER Randomized Clinical Trial. *JAMA Cardiol*. 2016; 1(5):584–592. <https://doi.org/10.1001/jamacardio.2016.0759> PMID: 27437665
13. Jois P, Mebazaa A. Cardio-renal syndrome type 2: epidemiology, pathophysiology, and treatment. *Semin Nephrol*. 2012 Jan; 32(1):26–30. <https://doi.org/10.1016/j.semnephrol.2011.11.004> PMID: 22365159
14. Hillege HL, Girbes AR, de Kam PJ, Boomsma F, de Zeeuw D, Charlesworth A, et al. Renal function, neuro- hormonal activation, and survival in patients with chronic heart failure. *Circulation*. 2000; 102:203–1. <https://doi.org/10.1161/01.cir.102.2.203> PMID: 10889132
15. Généreux P, Pibarot P, Redfors B, Mack MJ, Makkar RR, Jaber WA, et al. Staging classification of aortic stenosis based on the extent of cardiac damage. *Eur Heart J*. 2017 Dec 1; 38(45):3351–3358. <https://doi.org/10.1093/eurheartj/ehx381> PMID: 29020232
16. Evangelista A, Galian L. Management of Aortic Stenosis: The Trees Should Not Stop Us From Seeing the Forest. *J Am Coll Cardiol*. 2019; 74(4):564–566. <https://doi.org/10.1016/j.jacc.2019.06.002> PMID: 31345431
17. Pighi M, Fezzi S, Pesarini G, Venturi G, Giovannini D, Castaldi G, et al. Extravalvular cardiac damage and renal function following transcatheter aortic valve implantation for severe aortic stenosis. *Can J Cardiol*. 2020 Dec 28; S0828-282X(20)31188-0. <https://doi.org/10.1016/j.cjca.2020.12.021> PMID: 33383167
18. Galper BZ, Goldsweig AM, Bhatt DL. TAVR and the Kidney: Is This the Beginning of a Beautiful Friendship?. *J Am Coll Cardiol*. 2020; 76(12):1422–1424. <https://doi.org/10.1016/j.jacc.2020.08.015> PMID: 32943159
19. Peillex M, Marchandot B, Bayer S, Prinz E, Matsushita K, Carmona A, et al. Bedside Renal Doppler Ultrasonography and Acute Kidney Injury after TAVR. *J Clin Med*. 2020 Mar 25; 9(4):905. <https://doi.org/10.3390/jcm9040905> PMID: 32218228