

Aerobic and Anaerobic Metabolism during Activity in the Lizard *Dipsosaurus dorsalis*

Albert F. Bennett

Department of Zoology, University of California, Berkeley, California

William R. Dawson

Department of Zoology, The University of Michigan, Ann Arbor, Michigan

Received September 25, 1972

Summary. 1. Oxygen consumption and lactate content of the lizard *Dipsosaurus dorsalis* were determined under standard conditions and for a bout of maximal activity induced by a 2-min period of electrical stimulation. Observations were made between 25° and 45° C.

2. Maximal aerobic scope, 2.27 cm³ O₂/(g × hr), occurred at 40° C (Figs. 2, 4). The increase in oxygen consumption during activity at the various temperatures between 25° and 45° C represented 7- to 17-fold of corresponding resting levels.

3. Lactate content of resting *Dipsosaurus* is independent of temperature and averages 0.25 mg/g body weight. Maximal lactate production during the activity induced by a 2-min period of electrical stimulation occurred at 40° C (Fig. 3). The capacity of *Dipsosaurus* for anaerobic metabolism exceeds that of other lizards investigated, both in its magnitude and in its thermal dependence.

4. The total amount of energy mobilized by *Dipsosaurus* in the activity induced by a 2-min period of electrical stimulation was maximal at 40° C (Fig. 4). Anaerobiosis accounts for a minimum of 58–83% of the total energetic expenditure.

5. It is postulated that the principal physiological adaptations to preferred thermal levels in reptiles have involved energy mobilization during and rapid recovery after activity.

Introduction

Considerable information has been collected on the physiology and ecology of *Dipsosaurus dorsalis*, the desert crested iguana (see, for example, Cook, 1949; Norris, 1953; Dawson and Bartholomew, 1958; Dawson and Poulson, 1962; DeWitt, 1963, 1967a, b; Moberly, 1963; Licht, 1965; Mayhew, 1965a, 1968, 1971; Weathers, 1970; Minnich, 1970a, b; Minnich and Shoemaker, 1970; Beckman *et al.*, 1971). This lizard is a relatively common herbivore in deserts in parts of California, Arizona, Nevada, Utah, and northern Mexico, and is notable for its high activity temperatures and thermal tolerance. Preferred body temperature is 38.5° C in laboratory thermal gradients, but animals normally are warmer than this while active in nature (DeWitt, 1966, 1967a). Norris (1953) reported a mean field temperature of 42.1° C and Mayhew

(1968) found that 75% of the *Dipsosaurus* sampled in their natural habitat had body temperatures of 40° C or higher. Body temperatures as high as 47° C have been observed in this species under field conditions (Mayhew, 1968), the highest value reported for any reptile and among the highest for all vertebrates.

Dipsosaurus are active animals, capable of rapid movement even during the hottest part of the day. Belkin (1961) found their running speed to average 7.3 m/sec (16.3 mph), with a maximum value of 8.5 m/sec (19.0 mph). High temperatures are known to decrease the oxygen affinity and oxygen capacity of the blood of desert lizards (Dill *et al.*, 1935; Dill, 1938; Bennett, 1971), creating difficulties in oxygen procurement. The problems of oxygen transport would be particularly great during activity, when demand is greatest. Oxygen capacity in *Dipsosaurus* (9.5 vol. %) is identical to the mean for iguanid lizards (Dawson and Poulson, 1962). This species has a slightly greater oxygen affinity ($P_{50} = 66$ mm Hg at 40° C) than other lizards examined (Pough, 1969), but the effects of temperature on oxygen capacity have not been determined. Myoglobin levels are low in *Dipsosaurus*, averaging 0.3 mg/g muscle (Bennett, unpublished data).

In contrast to the undistinguished abilities of *Dipsosaurus* for oxygen procurement and transport, a variety of physiological observations suggest that this lizard might have pronounced capacities for sustained anaerobic activity. It produces higher levels of lactate per g of body weight during prolonged exertion than lizards of other species examined, and does not exhaust so readily (Bennett and Licht, 1972). This iguanid also has high levels of lactate dehydrogenase activity in blood plasma (H. Pough, personal communication), skeletal muscle, and liver (Bennett, 1972a). The protein-specific activity of phosphofructokinase, the enzyme catalyzing the rate-limiting step in glycolysis, in the skeletal muscle of *Dipsosaurus* is five times that in laboratory rats and twice that in another desert iguanid, *Sauromalus hispidus* (Bennett, 1972a).

The foregoing considerations prompted our interest in determining the relative roles of aerobic and anaerobic energy liberation in activity of *Dipsosaurus*. Neither of these factors has been determined previously because of the technological difficulties which they present. A new technique for the determination of total lactate production during activity has recently been developed (Bennett and Licht, 1972). Aerobic scope, the increment in oxygen consumption during maximal activity (Fry, 1947), is too small in animals the size of *Dipsosaurus* to permit determination by open-flow oxygen analysis. We have utilized a closed circuit technique, modified from one developed by R. Gatten (personal communication), through which low levels of oxygen consumption can be determined with a paramagnetic oxygen analyzer. We believe this

to be the first study in which the aerobic and anaerobic contributions to total energetic expenditure during activity have been measured simultaneously in reptiles.

Material and Methods

Adult *Dipsosaurus dorsalis* were collected in late April, 1972, near Palm Springs, Riverside Co., California (California Scientific Collector's Permit No. 643 to AFB) and transported by air to The University of Michigan, where all experimental procedures were performed in May, 1972. The animals were maintained in wooden and screen cages and given access to incandescent lamps set on a 7-hr photoperiod. Their diet consisted of *Tenebrio* larvae, lettuce, and dandelion (*Taraxacum officinale*) blossoms. Water was available at all times. The animals remained in excellent physical condition. Each was fasted at least two days before study.

Standard metabolic rates were determined on 30 individual *Dipsosaurus* (mean weight, 35.2 g; range, 28.7–42.6 g). The animals were weighed and fitted with electrodes, which were attached near the base of the tail musculature. The leads from these electrodes were fastened to the tail with masking tape. Free movement of the limbs and body was not hampered by the electrodes or leads. The animals were placed in black, light-tight chambers with an inner diameter of 7.8 cm and a volume of 1.8 or 2.6 liters. These chambers were fashioned from lengths of polyvinyl chloride drain pipe. The ends of the pipe were sealed with rubber stoppers containing ports for electrical leads and air lines. The chamber also contained a deflated latex condom (Youngs Drug Products Corp., Piscataway, New Jersey) for pressure compensation during air sampling after activity. The latter was connected to the outside via one of the air ports. The chambers were placed in a temperature cabinet at 25°, 30°, 35°, 40° or 45° C before 1200 EST. Air was metered through them at 100–350 cm³/min. Standard rates of oxygen consumption by the lizards in these chambers were measured for at least an hour after 2000 EST by passing dry, CO₂-free air from the excurrent air lines through a Beckman paramagnetic oxygen analyzer (model G-2; range 20–21% O₂) connected to a Honeywell Class 15 recorder. These lines each contained an absorbent train of Drierite (anhydrous CaSO₄) and Ascarite (Na-hydrate asbestos) for the absorption of water vapor and CO₂, respectively. The method of Hill (1972) was used for calculation of these rates. A second Honeywell Class 15 recorder was used in conjunction with copper-constantan thermocouples for monitoring chamber temperatures.

After determination of standard metabolism, the lizards' total oxygen consumption and lactate production were measured after a bout of maximal activity induced by electrical stimulation. Measurement of the oxygen consumption required data on the oxygen content of the metabolism chamber at the beginning and end of stimulation. These were calculated from information on the fractional concentrations of O₂ in chamber air; the animal's volume; and chamber volume, pressure, and humidity. The concentrations of O₂ were determined by use of the oxygen analyzer. Humidity was measured with a HygroDynamics humidity sensor. The initial fractional concentration of O₂ was determined with the metabolism system in its open circuit configuration.

Following this, the metabolism chamber was sealed and removed from the temperature cabinet. Then the animal was immediately subjected to electrical stimulation for 2.0 min (2–10 volts DC shocks of variable duration) with a Grass Stimulator (model S4c). Chamber temperature over this period remained essen-

tially at the level maintained in the temperature cabinet. During stimulation, the excurrent air port of the chamber was connected to a sampling balloon through a Varistaltic pump (Manostat Corp., New York). The balloon and all air lines external to the chamber were evacuated with a vacuum pump. At the end of the 2-min stimulation period, air was pumped from the chamber into the balloon for 10 sec. Approximately 500 cm³ of air was collected in this period; the condom within the chamber inflated and prevented the establishment of a large pressure deficit. The air sample in the balloon was metered via a small tube of Drierite through the paramagnetic oxygen analyzer at 150 cm³/min. The oxygen concentration within the closed chamber never fell below 20.6%. All gas volumes specified in connection with standard and active rates of metabolism have been corrected to STPD.

Following completion of stimulation and collection of the post-activity air sample, the lizard was immediately removed from the chamber, decapitated, and homogenized for 1 min in four-times its weight of 0.6 N perchloric acid. Homogenization involved use of an Osterizer set at maximum speed. Lactate formed during activity was measured by the method of Bennett and Licht (1972). Lactate determinations were also made on unstimulated animals at each test temperature to determine levels for resting lizards. Total lactate production during activity was obtained by subtracting the mean resting value from the total lactate concentration after activity.

Results

During stimulation *Dipsosaurus* underwent a period of vigorous activity generally lasting from 1 to 2 min at body temperature of 40° C or below. Activity at 45° C was rarely sustained for longer than one min, although the stimulation applied was identical to that at lower body temperatures. During the active period, no increase in ventilation was obvious, but upon cessation of activity, the *Dipsosaurus* initiated a profound hyperventilation in which tidal volume was greatly increased (see Fig. 1). This hyperventilation would serve to increase oxygen uptake and eliminate the carbon dioxide appearing as a result of both aerobic and anaerobic metabolism (the latter causes release of CO₂ through the bicarbonate buffer system).

Standard and active levels of oxygen consumption at various temperatures are illustrated in Fig. 2. The standard rate generally rose with increased body temperature, but no significant increment ($p = 0.23$) occurred between 35° and 40° C. A greatly increased water loss at 45° C (manifested by markedly higher chamber humidities) indicated that the animals were panting and hence were no longer in a strictly resting condition. Active oxygen consumption rose with increasing temperature up to 40° C and was lower at 45° C. Values of Q_{10} for active and standard metabolism are summarized in Table 1. The metabolic increment, or aerobic scope, associated with activity increased from 10-fold to 17-fold of standard levels of oxygen consumption between 25° and 40° C and decreased to 7-fold at 45° C. Maximum aerobic scope occurred at 40° C and amounted to 2.27 cm³ O₂/(g × hr).

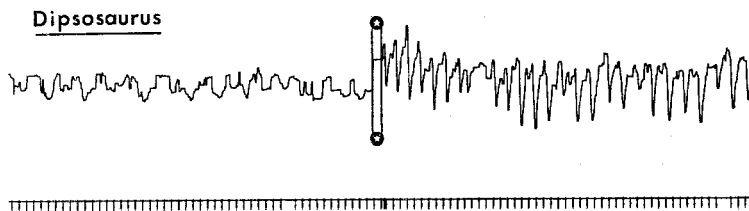


Fig. 1. Impedance pneumograph record of breathing movements in a *Dipsosaurus dorsalis* at rest and immediately following a 2-min period of electrical stimulation at 27° C. The resting and post-activity phases lie to the left and right, respectively, of the vertical bars bounded by stars. These lines mark the point on the record when the Physiograph recording oscillograph (Narco Bio-systems, Inc., Houston, Texas) was stopped (during the stimulation) and then started. The impedance pneumograph was connected to the lizard by two, 40 ga. constantan wires attached to the sides of the thorax. The hyperventilation (involving both increased frequency and amplitude of breathing movements) continued for 24 min following the bout of activity produced by the stimulation. The time base for the record is indicated on the lower trace, with the interval between the time marks in the lefthand third of the record representing 1 sec

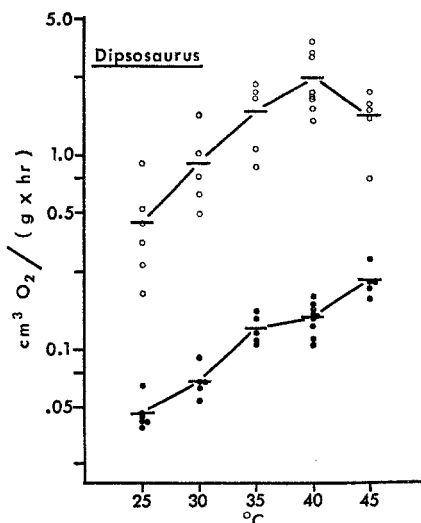


Fig. 2. The relation of oxygen consumption by *Dipsosaurus dorsalis* to temperature in animals under standard conditions and during maximal activity produced by 2-min of electrical stimulation (see text). Shaded circles represent standard values and unshaded circles, active ones. Short horizontal lines indicate mean values. Data are plotted on a semilogarithmic grid

Table 1. Values of Q_{10} for oxygen consumption of *Dipsosaurus dorsalis*

	Temperature interval			
	25-30°C	30-35°C	35-40°C	40-45°C
Q_{10} for standard rate	2.12	3.48	1.29 ^a	2.42
Q_{10} for active rate	4.04	3.39	2.16	0.42

^a Not significantly different from 1.0 ($p > 0.1$), indicating no thermal dependence of oxygen consumption over this temperature interval.

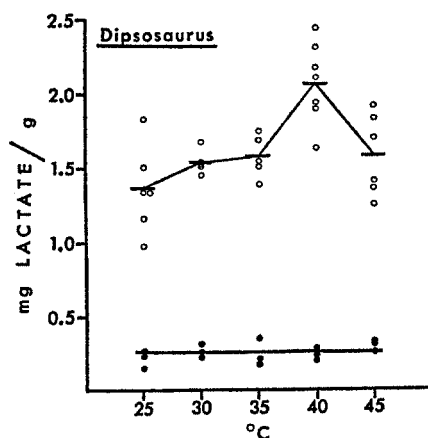


Fig. 3. The relation of total lactate concentration to temperature in *Dipsosaurus dorsalis* at the conclusion of a 2-min period of electrical stimulation. The short horizontal lines indicate mean values at the various temperatures. The shaded circles and long horizontal line refer to total lactate concentrations observed in resting animals

Resting and immediately post-active lactate concentrations are reported in Fig. 3. Resting lactate concentrations do not show a significant thermal dependence ($p = 0.20$). Therefore, they have been pooled, yielding a mean value of 0.25 mg lactate/g body weight. The post-active lactate contents at 25°, 30°, 35°, and 45° C all approximated 1.5 mg/g. However, that at 40° C was 2.07 mg/g, significantly higher ($p < 0.01$) than at these other temperatures. Total lactate production associated with the bouts of activity ranged from 1.11 mg/g at 25° C to 1.82 mg/g at 40° C.

Discussion

The standard metabolic rates measured in this study are about half those reported for *Dipsosaurus* of unspecified size by Cook (1949) and

about three-fourths of the rates obtained during the day for larger animals by Dawson and Bartholomew (1958). These differences probably result from circadian metabolic fluctuations, which can produce decrements as great as 50% in lizards (Roberts, 1968; Bennett, unpublished data). The low thermal dependence of resting metabolism of *Dipsosaurus* from 35–40° C (Fig. 2) is also evident in Dawson and Bartholomew's (1958) data for this lizard. Similar plateaus have been reported for other species as well (see Cook, 1949; Dawson and Bartholomew, 1956; Dawson and Templeton, 1963; Mayhew, 1965 b; Bennett, 1972 b). These plateaus do not appear to be artifacts associated with activity, but rather seem to represent zones of metabolic stability. DeWitt (1963) has reported that *Dipsosaurus* have body temperatures of 38–40° C even at night in their burrows during summer. The fact that these temperatures lie within the range in which standard metabolism is relatively stable may indicate an adjustment leading to greater homeostasis in this poikilotherm.

The weight-specific aerobic scope of *Dipsosaurus dorsalis* is more than double that reported for larger reptiles (Wilson, 1971; Bennett and Dawson, MS). This differential is probably not indicative of singular powers of aerobicity by our experimental subject, but rather a reflection of its relatively small body size. Weight-specific active metabolic rates have the same general size dependence as do weight-specific resting rates—smaller animals in both cases being able to attain higher rates of oxygen consumption per g body weight than larger animals (Hemmingsen, 1960). The aerobic scope observed in *Dipsosaurus* is approached by that noted in *Cnemidophorus tigris* of similar size, 1.75 cm³ O₂/(g × hr) at 40° C (Asplund, 1970). Maximum aerobic scope occurs close to 40° C in *Dipsosaurus*, near the normal activity temperature of these animals. A similar situation has been found for most other reptiles examined (Wilson, 1971; Bennett and Dawson, MS).

Lactate concentrations in *Dipsosaurus* following activity at 25°, 30°, 35°, and 45° C are similar to those reported for other species of lizards, independent of body temperature (Bennett and Licht, 1972). Lactate levels in these relatively small lizards tend to increase to 1.4–1.5 mg/g body weight with exertion. Attainment of these concentrations is accompanied by greatly decreased activity or total exhaustion. The interrelations between these factors are at present unclear. It is known that high levels of lactate production can have disruptive effects on blood pH and oxygen transport in lizards (Bennett, 1971) and that considerable increase occurs in blood lactate concentrations during activity (Bennett and Licht, 1972). The decreased activity or exhaustion associated with lactate accumulation may depend on: 1) a depletion of metabolizable substrate within the muscles; or 2) neural inhibition.

The latter, which might prevent lactate concentrations from rising to injurious levels, could be mediated through a sensory system monitoring pH or P_{CO_2} , either peripherally or within the central nervous system. The basis of the reduction in activity cannot be clarified without more detailed experiments. However, the first hypothesis would require the availability of a greater amount of substrate at 40° C, in view of the relatively greater lactate production at that temperature than at other temperatures.

The levels of lactate production sustained at 40° C by *Dipsosaurus* are greater than any reported previously for other species of lizards. Bennett and Licht (1972) reported a value of 1.75 mg lactate/g at 37° C after 90 sec of activity, a value almost identical to that interpolated from our data. In *Anolis carolinensis*, *Lygosoma laterale*, *Uta stansburiana*, and *Xantusia virgilis*, the total lactate production at preferred thermal levels is not significantly greater than at other body temperatures (Bennett and Licht, 1972). Consequently, on the basis of present information, *Dipsosaurus* appears exceptional among lizards in its powers of anaerobiosis. It is able to mobilize a greater amount of energy anaerobically than other species and to produce and tolerate more lactate at normal activity temperatures than at other body temperatures.

Presumably, all the significant energy-yielding processes during physical exertion by *Dipsosaurus* involve oxygen consumption or lactate production. The resulting generation of ATP can be estimated from the following relations:

$$\begin{aligned} 1.0 \text{ mg lactate formed} &= 0.0167 \text{ mmoles ATP;} \\ 1.0 \text{ cm}^3 \text{ O}_2 \text{ (STPD) consumed} &= 0.290 \text{ mmoles ATP.} \end{aligned}$$

The former relation depends on the assumption that glycogen is the substrate catabolized. The latter requires a P/O ratio of 3.0. Validation of these specifications is provided in the studies of reptilian metabolism by Privitera and Mersmann (1966) and Moberly (1968a). The ATP production estimated for *Dipsosaurus* from the net amount of lactate produced and of oxygen consumed during 2-min stimulation periods is plotted as a function of temperature in Fig. 4. Anaerobic processes account for a minimum of 58% and a maximum of 83% of the total energy expended, with these extremes occurring at 40° and 25° C, respectively. These figures represent conservative estimates of the role of anaerobiosis in support of activity in *Dipsosaurus*, since a portion of the oxygen consumption measured represents repayment of oxygen debt.

It is of considerable interest that total energy expenditure during enforced activity by *Dipsosaurus* reaches a maximum at 40° C, within

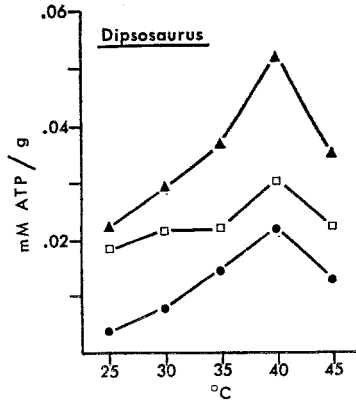


Fig. 4. Estimated weight-specific production of ATP (in mmoles/g of body weight) by *Dipsosaurus dorsalis* in the maximal activity produced by 2-min of electrical stimulation at various temperatures. Circles: ATP resulting from aerobic metabolism. Squares: ATP resulting from anaerobic metabolism. Triangles: total ATP from both anaerobic and aerobic metabolism. Estimates are based on data from Figs. 2 and 3 and relations specified in text

the normal range of body temperatures noted for this lizard during activity in nature. Surprisingly few laboratory-determined physiological variables have been found to correspond to preferred body temperature in reptiles. Heart rate increment (the difference between resting and active heart rate) (Licht, 1965), ability to produce a hypoosmotic urine (Shoemaker *et al.*, 1967), maximal sustainable walking speed and capacity for clearance of blood lactate after activity (Moberly, 1968a, b) and aerobic metabolic scope (Wilson, 1971; Bennett and Dawson, MS) are the only notable factors. Most of these correlated variables involve energy processing during activity. It is possible that the principal physiological adaptations of reptiles to preferred thermal levels have involved capacities for rapid energy during and rapid recovery after activity.

This study was supported in part by a Miller Postdoctoral Research Fellowship to AFB and by National Science Foundation Grant GB-25022 to WRD. We thank Dr. Lon McClanahan for assistance in collecting the animals.

References

- Asplund, K. K.: Metabolic scope and body temperatures of whiptail lizards (*Cnemidophorus*). *Herpetologica* **26**, 403-411 (1970).
- Beckman, W. A., Mitchell, J. W., Porter, W. P.: Thermal model for prediction of a desert iguana's daily and seasonal behavior. Amer. Soc. Mech. Engineers Publ. 71-WA/HT-35, 7 (1971).

- Belkin, D. A.: The running speeds of the lizards *Dipsosaurus dorsalis* and *Callisaurus draconoides*. *Copeia* **1961**, 223-224 (1961).
- Bennett, A. F.: Oxygen transport and energy metabolism in two species of lizards, *Sauromalus hispidus* and *Varanus gouldii*. Ph. D. Thesis. Ann Arbor: Univ. of Michigan 1971.
- Bennett, A. F.: A comparison of activities of metabolic enzymes in lizards and rats. *Comp. Biochem. Physiol.* **42B**, 637-647 (1972a).
- Bennett, A. F.: The effect of activity on oxygen consumption, oxygen debt, and heart rate in the lizards *Varanus gouldii* and *Sauromalus hispidus*. *J. comp. Physiol.* **79**, 259-280 (1972b).
- Bennett, A. F., Dawson, W. R.: Reptilian metabolism. In: *Biology of the Reptilia. Physiology A*, vol. 5, ed. C. Gans. New York: Academic Press (in press).
- Bennett, A. F., Licht, P.: Anaerobic metabolism during activity in lizards. *J. comp. Physiol.* **81**, 277-288 (1972).
- Cook, S. F.: Respiratory metabolism of certain reptiles and amphibia. *Univ. Calif. Publ. Zool.* **53**, 367-376 (1949).
- Dawson, W. R., Bartholomew, G. A.: Relation of oxygen consumption to body weight, temperature, and temperature acclimation in lizards *Uta stansburiana* and *Sceloporus occidentalis*. *Physiol. Zool.* **29**, 40-51 (1956).
- Dawson, W. R., Bartholomew, G. A.: Metabolic and cardiac responses to temperature in the lizard *Dipsosaurus dorsalis*. *Physiol. Zool.* **31**, 100-111 (1958).
- Dawson, W. R., Poulson, T. L.: Oxygen capacity of lizard bloods. *Amer. Midl. Nat.* **68**, 154-164 (1962).
- Dawson, W. R., Templeton, J. R.: Physiological responses to temperature in the lizard *Crotaphytus collaris*. *Physiol. Zool.* **36**, 219-236 (1963).
- DeWitt, C. B.: Behavioral thermoregulation in the iguanid lizard, *Dipsosaurus dorsalis*. Ph. D. Thesis. Ann Arbor: Univ. of Michigan 1963.
- DeWitt, C. B.: Precision of thermoregulation and its relation to environmental factors in the desert iguana, *Dipsosaurus dorsalis*. *Physiol. Zool.* **40**, 49-66 (1967a).
- DeWitt, C. B.: Behavioral thermoregulation in the desert iguana. *Science* **158**, 809-810 (1967b).
- Dill, D. B.: Life, heat, and altitude. Physiological effects of hot climates and great heights. Cambridge: Harvard Univ. Press 1938.
- Dill, D. B., Edwards, H. T., Bock, A. V., Talbott, J. H.: Properties of reptilian blood. III. The chuckwalla (*Sauromalus obesus* Baird). *J. cell. comp. Physiol.* **6**, 37-42 (1935).
- Fry, F. E. J.: Effects of the environment on animal activity. *Pub. Ont. Fish. Res. Lab. No 68*, 1-62 (1947).
- Hemmingsen, A. M.: Energy metabolism as related to body size and respiratory surfaces, and its evolution. *Rep. Steno Mem. Hosp. Nord. Insulinlab.* **9**, 1-110 (1960).
- Hill, R. W.: Determination of oxygen consumption using the paramagnetic oxygen analyzer. *J. appl. Physiol.* **33**, 261-263 (1972).
- Licht, P.: Effects of temperature on heart rates of lizards during rest and activity. *Physiol. Zool.* **38**, 129-137 (1965).
- Mayhew, W. W.: Growth response to photoperiodic stimulation in the lizard *Dipsosaurus dorsalis*. *Comp. Biochem. Physiol.* **14**, 209-216 (1965a).
- Mayhew, W. W.: Hibernation in the horned lizard, *Phrynosoma m'calli*. *Comp. Biochem. Physiol.* **16**, 103-119 (1965b).
- Mayhew, W. W.: Biology of desert amphibians and reptiles, p. 195-356. In: *Desert biology*, ed. G. W. Brown, Jr. New York: Academic Press 1968.

- Mayhew, W. W.: Reproduction in the desert lizard, *Dipsosaurus dorsalis*. *Herpetologica* **27**, 57-77 (1971).
- Minnich, J. E.: Water and electrolyte balance of the desert iguana, *Dipsosaurus dorsalis*, in its natural habitat. *Comp. Biochem. Physiol.* **35**, 921-933 (1970a).
- Minnich, J. E.: Evaporative water loss from the desert iguana, *Dipsosaurus dorsalis*. *Copeia* **1970**, 575-578 (1970b).
- Minnich, J. E., Shoemaker, V. H.: Diet, behavior and water turnover in the desert iguana, *Dipsosaurus dorsalis*. *Amer. Midl. Nat.* **84**, 496-509 (1970).
- Moberly, W. R.: Hibernation in the desert iguana, *Dipsosaurus dorsalis*. *Physiol. Zool.* **36**, 152-160 (1963).
- Moberly, W. R.: The metabolic responses of the common iguana, *Iguana iguana*, to activity under restraint. *Comp. Biochem. Physiol.* **27**, 1-20 (1968a).
- Moberly, W. R.: The metabolic responses of the common iguana, *Iguana iguana*, to walking and diving. *Comp. Biochem. Physiol.* **27**, 21-32 (1968b).
- Norris, K. S.: The ecology of the desert iguana *Dipsosaurus dorsalis*. *Ecology* **34**, 265-287 (1953).
- Pough, F. H.: Environmental adaptations in the blood of lizards. *Comp. Biochem. Physiol.* **31**, 885-901 (1969).
- Privitera, C. A., Mersmann, H. J.: Seasonal oxidative phosphorylation by turtle heart mitochondria. *Comp. Biochem. Physiol.* **17**, 1045-1048 (1966).
- Roberts, L. A.: Oxygen consumption in the lizard *Uta stansburiana*. *Ecology* **49**, 809-819 (1968).
- Shoemaker, V. H., Licht, P., Dawson, W. R.: Thermal dependence of water and electrolyte excretion in two species of lizards. *Comp. Biochem. Physiol.* **23**, 255-262 (1967).
- Weathers, W. W.: Physiological thermoregulation in the lizard *Dipsosaurus dorsalis*. *Copeia* **1970**, 549-557 (1970).
- Wilson, K. J.: The relationships of activity, energy, metabolism, and body temperature in four species of lizards. Ph. D. Thesis. Clayton, Victoria: Monash Univ. 1971.

Dr. Albert F. Bennett
Department of Zoology
University of California
Berkeley, California 94720, U.S.A.

Prof. William R. Dawson
Department of Zoology
The University of Michigan
Ann Arbor, Michigan 48104, U.S.A.