

Aerobic capacity and telomere length in human skeletal muscle and leukocytes across the lifespan

Danielle Hiam¹, Cassandra Smith^{1,2}, Sarah Voisin¹, Josh Denham³, Xu Yan¹, Shanie Landen¹, Macsue Jacques¹, Javier Alvarez-Romero¹, Andrew Garnham¹, Mary N. Woessner¹, Markus Herrmann⁴, Gustavo Duque^{2,5}, Itamar Levinger^{1,2}, Nir Eynon^{1,6}

¹Institute for Health and Sport (IHES), Victoria University, Melbourne, VIC, Australia

²Australian Institute for Musculoskeletal Science (AIMSS), University of Melbourne and Western Health, St Albans, VIC, Australia

³RMIT University, School of Health and Biomedical Sciences, Melbourne, VIC, Australia

⁴Clinical Institute of Medical and Chemical Laboratory Diagnostics, Medical University of Graz, Graz, Austria

⁵Department of Medicine-Western Health, Melbourne Medical School, The University of Melbourne, Melbourne, VIC, Australia

⁶Murdoch Children's Research Institute, Melbourne, VIC, Australia

Correspondence to: Nir Eynon; **email:** nir.eynon@vu.edu.au

Keywords: exercise, telomere, ageing, aerobic capacity

Received: November 6, 2019

Accepted: December 18, 2019

Published: January 3, 2020

Copyright: Hiam et al. This is an open-access article distributed under the terms of the Creative Commons Attribution License (CC BY 3.0), which permits unrestricted use, distribution, and reproduction in any medium, provided the original author and source are credited.

ABSTRACT

A reduction in aerobic capacity and the shortening of telomeres are hallmarks of the ageing process. We examined whether a lower aerobic capacity is associated with shorter TL in skeletal muscle and/or leukocytes, across a wide age range of individuals. We also tested whether TL in human skeletal muscle (MTL) correlates with TL in leukocytes (LTL). Eighty-two recreationally active, healthy men from the Gene SMART cohort (31.4 ± 8.2 years; body mass index (BMI) = $25.3 \pm 3.3 \text{ kg/m}^2$), and 11 community dwelling older men (74.2 ± 7.5 years-old; BMI = $28.7 \pm 2.8 \text{ kg/m}^2$) participated in the study. Leukocytes and skeletal muscle samples were collected at rest. Relative telomere length (T/S ratio) was measured by RT-PCR. Associations between TL, aerobic capacity (VO_2 peak and peak power) and age were assessed with robust linear models. Older age was associated with shorter LTL (45% variance explained, $P < 0.001$), but not MTL ($P = 0.7$). Aerobic capacity was not associated with MTL ($P = 0.5$), nor LTL ($P = 0.3$). MTL and LTL were correlated across the lifespan ($r_s = 0.26$, $P = 0.03$). In healthy individuals, age explain most of the variability of LTL and this appears to be independent of individual aerobic capacity. Individuals with longer LTL also have a longer MTL, suggesting that there might be a shared molecular mechanism regulating telomere length.

INTRODUCTION

Telomeres are highly conserved repetitive DNA sequences that cap chromosomes [1] and are important in maintaining genetic stability by protecting against genetic recombination, end-to-end fusion of the chromosome and cellular degradation [2, 3]. Somatic cell telomeres shorten with each round of mitotic division until they become too short to divide resulting

in cellular senescence [4]. In somatic tissues, telomere length (TL) is established early in life [5, 6], and shortens with older age [7, 8]. Skeletal muscle is a minimally proliferative tissue compared with leukocytes, and therefore, TL in skeletal muscle is in general longer than in leukocytes [6]. The length of telomeres varies considerably between individuals of the same chronological age and is therefore indicative of biological age [8]. The inter-individual variability in TL

is thought to be influenced by genetics, epigenetics and environmental factors including oxidative stress, and inflammation [9–12].

TL is associated with some, but not all, ageing and disease-related traits [13, 14]. Literature is inconsistent regarding TL and all-cause mortality with some [7, 15] but not all studies [16, 17] finding that a shorter TL is associated with increased risk of all-cause mortality. Some studies show that a shorter TL is associated with age-related conditions such as cardiovascular disease [18, 19] and diabetes mellitus [9, 20]. While in cancer the literature is conflicted regarding risk of cancer and TL [7, 21–23] with suggestions that perhaps a “U-shaped” risk association may exist between very short and very long telomeres and risk of different types cancer [12, 22, 24, 25]. In two recent papers, there was no association between TL and cognitive function, grip strength, frailty and sarcopenia [13, 26]; suggesting that telomere length may not be a marker of all ageing and disease-related traits.

It is well established that regular physical activity promotes healthy ageing and reduces the risk of developing these chronic diseases [27, 28]. Engagement in exercise is associated with longer telomeres and may slow down TL shortening [29]. Higher aerobic capacity is associated with longer leukocyte TL in endurance trained athletes [30–32] and young (18–32 yrs) [33] and older exercised-trained adults (55–72yrs) when compared to controls [34]. However, the literature regarding TL in skeletal muscle is conflicting, with only few studies reporting a positive association between higher levels of physical activity and longer telomeres in young and older healthy populations [35–37]; while other studies reported no association between skeletal muscle TL and exercise training levels [38, 39]. The variability in findings was highlighted in a systematic review where 54% of studies found no association between physical activity and skeletal muscle TL [40]. Physical activity was assessed using a multitude of subjective measures of physical activity (questionnaires) or motion sensors (accelerometers), which could account for the conflicting results.

To make use of TL as biomarker of ageing and in predicting health outcomes, more research is required to understand the inter-individual variation in TL and its attrition across the human lifespan. Therefore, the aim of this study was to examine whether aerobic capacity (defined using gold-standard measures) is associated with TL in skeletal muscle and/or leukocytes, across a wide age range (18–87 years). We also investigated whether TL in human skeletal muscle is associated with TL in leukocytes.

RESULTS

The young cohort had a lower BMI, were fitter (higher $\dot{V}O_{2peak}$ and peak power), and harboured longer LTL than the older cohort. However, there was no difference in MTL between the young and old cohort (Table 1).

Fitness parameters and telomere length

After adjustment for age, none of the fitness parameters (Supplementary Table 1) or the combined aerobic capacity score were associated with LTL ($\beta=0.06$, $P=0.3$; 95% CI= -0.1, 0.2) or MTL ($\beta=0.08$, $P=0.5$; 95% CI= -0.1, 0.2) (Figure 1).

Overall, age was associated with a shorter LTL ($\beta=-0.45$, $P<0.001$; 95% CI= -0.029, -0.013) but not with MTL ($\beta=-0.06$, $P=0.73$, 95% CI= -0.009, 0.005) (Figure 2). Longer MTL was associated with longer LTL ($r_s=0.22$, $p=0.046$) across the lifespan (Figure 3).

DISCUSSION

In this study, we confirmed that TL shortens with age in leukocytes of apparently healthy men, and that LTL and MTL are correlated. However, TL was not associated with age in skeletal muscle, and aerobic capacity was not associated with longer telomeres in either leukocytes or skeletal muscle. In addition, a significant correlation was found between LTL and MTL indicating that individuals with a short (or long) telomeres in one tissue also display a short (or long) telomeres in another tissue, consistent with previous reports [6]. Overall, age explains most of the variability of LTL and this appears to be independent of individual aerobic capacity. While MTL appears to be stable (regardless of age and level of fitness) across the lifespan. Further, since it is correlated with LTL, MTL could serve as a reference to indicate shortening in LTL since early-life.

TL in somatic tissues is established early in life [5, 6] and linearly decreases with age after the age of 20 years [7, 8]. The association between TL and age in leukocytes, but not in skeletal muscle, indicates that the TL shortening is variable across different tissues. This is most likely due to the different proliferative capacity and the number cell divisions that take place across the human life-span in each tissue [41, 42]. An inverse correlation between age and LTL was found in our cohort with age accounting for 45% of the variation in TL, which is consistent with literature [8]. It is well known that leukocytes are a highly proliferative tissue and undergo rapid cell division at two different stages of life, during the first years of life and in older age (~60yrs), and hence a strong correlation with age is observed [42, 43]. There is limited data on the

Table 1. Participant characteristics.

Characteristics	Young n=82	Older n=11	P value
Age (Years)	31.4 ± 8.3	74.2 ± 7.5	P<0.001
BMI (kg·m ⁻²)	25.2 ± 3.3	28.7 ± 2.8	P=0.001
VO ₂ peak (mL·kg ⁻¹ ·min ⁻¹)	47.3 ± 8.0	20.9 ± 3.4	P<0.001
Peak power (W·kg ⁻¹)	3.7 ± 0.8	1.5 ± 0.3	P<0.001
LTL (AU)	1.24 ± 0.85	0.56 ± 0.27	P<0.001
MTL (AU)	1.06 ± 0.38	0.97 ± 0.25	P=0.45

BMI: Body Mass Index; W: Watts; LTL: Leukocyte Telomere Length; MTL: Skeletal Muscle Telomere Length; AU: arbitrary units. Data is shown as Mean ± SD.

association between age and MTL in healthy populations, with most studies having examined the correlation in populations who live with chronic diseases, thus making it difficult to delineate the effect of age and disease status on telomere length [42, 44]. Due to the minimal proliferative capacity of skeletal muscle, it is thought that MTL is maintained throughout

maintaining telomere length [45, 47]. In line with this, these data show that age is not associated with MTL in a apparently healthy population, consistent with some [48, 49], but not all reports [6].

We report that a higher LTL is associated with a higher MTL. While LTL undergoes a faster rate of attrition with age than MTL, the inter-individual difference in TL is much larger than the intra-individual difference in TL across tissues [5, 6]. Therefore, an individual with short (or long) telomeres in leukocytes will display corresponding short (or long) telomeres in skeletal muscle. This finding extends knowledge from previous studies which have reported a correlation in fetuses and children [5] and in adults aged between 19–77 years [6]. Overall, these results suggest that the impact of age on telomere attrition is more apparent in highly proliferative tissue than in minimally proliferative tissue.

While the benefits of physical activity on ageing and age-related conditions are well known [27, 28], the benefits on cellular regeneration and senescence are less clear. Our data are in line with a growing body of literature indicating that higher aerobic capacity is not associated with telomere length after adjusting for age [40, 50]. Specifically, we showed that age is the major contributing factor to variability in LTL. We hypothesise that the lack of association may be specific to the population used in this study, i.e. apparently healthy men, with relatively high levels of fitness, according to a recent paper reporting quantile reference values for peak oxygen uptake (VO₂peak) [51]. It is possible that TL is maintained at this level of fitness [34, 52]. The literature around TL and self-reported physical activity supports this with those with high levels of habitual physical activity having longer LTL, compared with individuals with low and moderate habitual physical activity [53]. Therefore, perhaps the lack of association of aerobic capacity with TL may due to the high level of fitness exhibited in this cohort and the lack of representation of individuals with a low level of fitness.

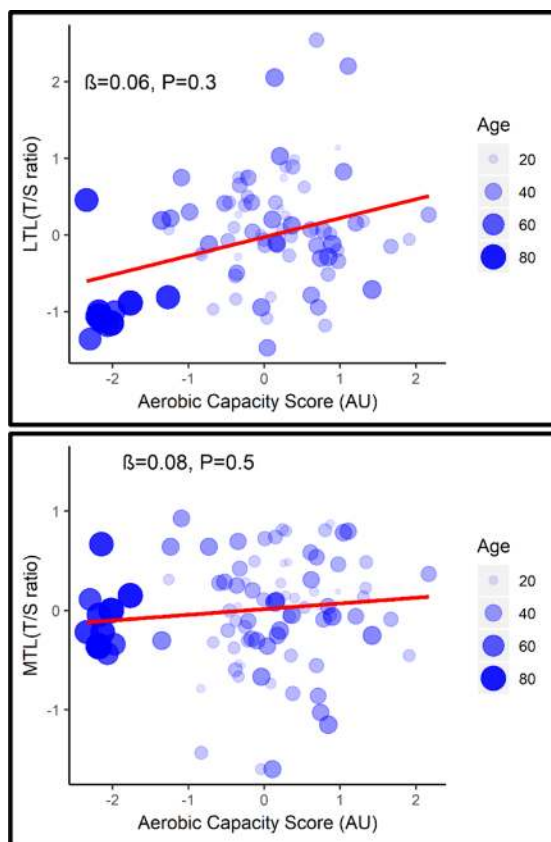


Figure 1. Association between LTL (top) and MTL (bottom) with aerobic capacity score adjusted for age.

adult life and only shortens in response to trauma or disease [45, 46]. Our data also imply a tissue-specific molecular mechanism in skeletal muscle that is

A limitation of this study was its cross-sectional nature, and while it would be optimal to conduct a longitudinal study in the same individuals, this was not feasible. We acknowledge that there is a relatively low sample size in our older-adults group (n=11). This relatively small sample size is due to the difficulty to recruit older adults for an invasive study with a muscle biopsy. Telomere length is highly variable between individuals and is impacted by multiple genetic, epigenetic and environmental factors [10, 11, 54, 55]. While we cannot fully account for all these factors, a strength of this study is that our cohort is very homogeneous with regards to confounding factors that can impact TL (i.e. all participants were non-smokers, recreationally active men). Further, we used comprehensive and valid measures of aerobic capacity

and created a robust aerobic score to best reflect the aerobic capacity of a person at the physiological level.

CONCLUSIONS

In apparently healthy individuals, age explains most of the variability of LTL and this appears to be independent of individual aerobic capacity. Individuals with longer LTL also have a longer MTL, suggesting that there might be a shared molecular mechanism regulating telomere length. Whether specific exercise interventions with either high or low intensity components can alter telomere maintenance pathways and regulate telomere length would be interesting to explore in future studies.

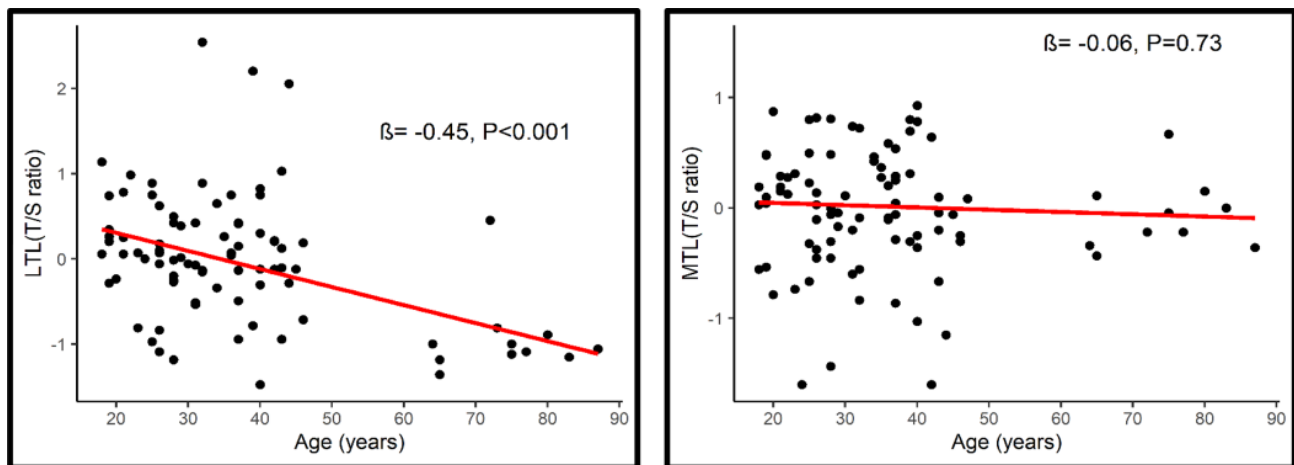


Figure 2. Association between LTL (Left) and MTL (Right) with age.

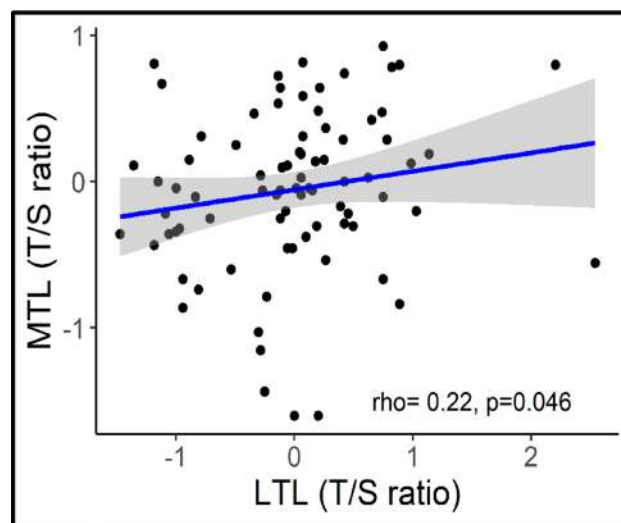


Figure 3. Correlation between MTL and LTL.

MATERIALS AND METHODS

Participants

This was a cross-sectional study involving two cohorts of men: the Gene SMART (Skeletal Muscle Adaptive Response to Training) cohort of 82 men aged 18–45 years, and the Welllderly cohort of 11 men aged 64–87 years. Participants' characteristics are presented in Table 1. All participants were asked to abstain from food, caffeine and alcohol for at least 8 hours prior to blood and muscle collection.

The gene SMART, young cohort

82 recreationally active ($\dot{V}O_{2\text{peak}}$: 47.3 ± 8.0 mL.kg⁻¹.min⁻¹) men aged 18–45 years participated in the study following a written informed consent. Volunteers were excluded if they had a chronic disease, were taking medications, warfarin or vitamin K supplementation, or medications that affect metabolism, insulin secretion/sensitivity. Further, participants with known musculoskeletal or other conditions that prevent daily activity were excluded from the study. The full methods of the Gene SMART study are described elsewhere [56]. This study was approved by the Human Ethics Research Committee at Victoria University (HRE13-223).

The welllderly, older cohort

11 men aged 64–87 years were included in this study. The men were recruited as part of a larger study examining the effect of acute exercise in older-adults. This study has been approved by Melbourne Health (MH) Human Research Ethics Committee and is registered with the Australia New Zealand Clinical Trials Registry ACTRN12618001756213. Volunteers were excluded if they had any fractures in the previous 3 months, or had undergone a new osteoporotic treatment within 3 months or had begun taking anti-resorptive medications within 3 months, have diagnosed diabetes mellitus or were taking hypoglycaemic medications, any haematological, myelodysplastic or myeloproliferative disorder, any bone malignancy, taking warfarin or vitamin K supplementation or restriction, a body mass index > 40 kg/m², or engaged in resistance exercise regime more than 2 sessions per week.

Skeletal muscle and blood collection

In both cohorts, muscle biopsies were collected from the *vastus lateralis* muscle after an overnight fast by an experienced medical doctor. Following injection of a local anaesthetic (1% Lidocaine), incisions were made, and the biopsy needle inserted. Muscle samples were collected with manual suction applied [56]. Following collection, the samples (50–200 mg) were immediately blotted on filter paper to remove excess blood and

placed immediately in liquid nitrogen before being stored at –80 °C until analysis.

Venous blood samples were collected by venepuncture or cannulation just before the muscle biopsy. Five mL of venous blood were collected in EDTA blood collection tubes (Becton, Dickinson and Company, USA), inverted 6–10 times, centrifuged at 3500 rpm for 10 min at 4°C. The plasma was collected and placed in Eppendorf tubes for other analysis. The residual blood sample (which includes the leukocytes) was frozen at –20°C overnight before being stored at –80 °C until DNA extraction.

Aerobic capacity

Young cohort

Aerobic capacity was assessed by a graded exercise test (GXT). Briefly, the test consisted of 4-minute exercise stages, separated by 30 second rest periods until voluntary exhaustion [56].

Older cohort

Peak oxygen consumption ($\dot{V}O_{2\text{Peak}}$) was assessed on a cycle ergometer with the initial intensity beginning at 10–30 Watts and increasing by 10–30W×min⁻¹ according to participant capacity. The test was terminated according to participants' self-reported fatigue perception reaching a pre-determined level (Rate of Perceived Exertion=17) [57] or clinical signs or symptoms. Blood pressure was monitored at baseline, regular intervals (each stage) and post exercise using a manual sphygmomanometer, and heart rate was monitored via the 12-lead ECG.

Telomere assays

TL was measured in skeletal muscle and leukocytes collected at baseline (in a rested state). Skeletal muscle previously stored at –80°C was lysed with the RLT buffer Plus buffer (Qiagen) and beta-mercaptoethanol using the TissueLyser II (Qiagen, Australia). DNA was extracted using the AllPrep DNA/RNA Mini Kit following the manufacturer guidelines (Qiagen, Australia). DNA yield and purity were assessed using the spectrophotometer (NanoDrop One, Thermofisher) before being stored at –20°C prior to the telomere assays. Genomic DNA was extracted from buffy-coat leukocytes from BD Vacutainer EDTA tubes using the MagSep Blood gDNA kit (0030 451.00, Eppendorf, Hamburg, Germany) [56]. DNA yield and purity were assessed using the spectrophotometer (NanoDrop One, Thermofisher) before being stored at –20°C prior to the telomere assays. The DNA 260/280 and 260/230 OD values were acceptable in the young (1.86 ± 0.07 and 1.35 ± 0.27 , respectively) and older (1.93 ± 0.02 and 1.77 ± 0.40 , respectively) cohorts.

The telomere (T) to single copy gene (S) ratio (T/S ratio) was calculated to provide telomere length in arbitrary units. Ten microliter reactions comprised of SensiFAST Lo-ROX (20×), 300nM of forward and reverse primers (telomere) or 300nM of forward and 500nM of reverse primers (36B4), H₂O and 12.5 ng of DNA template were run in triplicate with no-template negative controls on a single 384-well plate in a thermo-cycler (Quant Studio 12K Flex System, ThermoFisher Scientific, Australia) and repeated twice. The primer sets and thermo-cycling conditions are described elsewhere [30]. The T/S ratios were calculated and expressed relative to the individual with the median T/S ratio using the 2- $\Delta\Delta$ CT method. In skeletal muscle the inter-coefficients of variation for triplicates for the telomere and 36B4 gene were acceptable (mean \pm SD: 1.43 \pm 0.53 and 1.91 \pm 0.57, respectively). In leukocytes inter-coefficients of variation for triplicates for the telomere and 36B4 gene were also acceptable (mean \pm SD: 3.61 \pm 0.99 and 2.49 \pm 0.96, respectively). In skeletal muscle the intra-coefficients of variation for triplicates for the telomere and 36B4 gene were acceptable (mean \pm SD: 1.23 \pm 0.71 and 1.3 \pm 0.74, respectively). In leukocytes the inter-coefficients of variation for triplicates for the telomere and 36B4 gene were also acceptable (mean \pm SD: 2.3 \pm 1.3 and 1.9 \pm 1.2, respectively).

Statistical analysis

All data were analysed using R studio version 1.1.463. Mann-Whitney tests were used to compare characteristics between the young and older cohorts. The distributions of LTL and MTL were verified for normality visually using histograms and were log-transformed to meet normality assumptions. To examine the additive effect of fitness measures on telomere length, we calculated a fitness score by combining peak power and $\dot{V}O_{2peak}$ into a single value. First, we calculated the z-score for each fitness measure, and then we averaged those z-scores across all fitness measures to calculate the final aerobic capacity score. Robust linear models, using the *rlm* function of the *MASS* package in R [58], were then performed with log-transformed telomere length as the dependent variable, and both age and fitness parameters (peak power, $\dot{V}O_{2peak}$, or aerobic capacity score) as the independent variables. A likelihood ratio test was used to compare the full model containing both age and fitness parameters (peak power, $\dot{V}O_{2peak}$, or aerobic capacity score), with a null model containing only age, as implemented in the *lrtest* function of the *lmtest* package in R [59]. Spearman correlations were used to test for an association between MTL and LTL. P values from the statistical analyses were adjusted for multiple testing using the false discovery rate (FDR) [60], and q-values < 0.05 were deemed significant.

ACKNOWLEDGMENTS

We acknowledge the Exercise and Sport Science Australia (ESSA) Tom Penrose grant for partial support of this work.

CONFLICTS OF INTEREST

The authors declare that they have no conflict of interest.

FUNDING

N.E. supported by a Career Development Fellowship from the National Health and Medical Research Council, Australia (NHMRC CDF# APP1140644). S.V. is supported by an Early Career Fellowship from the National Health and Medical Research Council, Australia (NHMRC ECF# APP1157732).

REFERENCES

1. Moyzis RK, Buckingham JM, Cram LS, Dani M, Deaven LL, Jones MD, Meyne J, Ratliff RL, Wu JR. A highly conserved repetitive DNA sequence, (TTAGGG)_n, present at the telomeres of human chromosomes. *Proc Natl Acad Sci U S A*. 1988; 85:6622–26. <https://doi.org/10.1073/pnas.85.18.6622> PMID: [3413114](https://pubmed.ncbi.nlm.nih.gov/3413114/)
2. Counter CM, Avilion AA, LeFeuvre CE, Stewart NG, Greider CW, Harley CB, Bacchetti S. Telomere shortening associated with chromosome instability is arrested in immortal cells which express telomerase activity. *EMBO J*. 1992; 11:1921–29. <https://doi.org/10.1002/j.1460-2075.1992.tb05245.x> PMID: [1582420](https://pubmed.ncbi.nlm.nih.gov/1582420/)
3. Ducray C, Pommier JP, Martins L, Boussin FD, Sabatier L. Telomere dynamics, end-to-end fusions and telomerase activation during the human fibroblast immortalization process. *Oncogene*. 1999; 18: 4211–23. <https://doi.org/10.1038/sj.onc.1202797> PMID: [10435634](https://pubmed.ncbi.nlm.nih.gov/10435634/)
4. Oeseburg H, de Boer RA, van Gilst WH, van der Harst P. Telomere biology in healthy aging and disease. *Pflugers Arch*. 2010; 459:259–68. <https://doi.org/10.1007/s00424-009-0728-1> PMID: [19756717](https://pubmed.ncbi.nlm.nih.gov/19756717/)
5. Sabharwal S, Verhulst S, Guirguis G, Kark JD, Labat C, Roche NE, Martimucci K, Patel K, Heller DS, Kimura M, Chuang D, Chuang A, Benetos A, Aviv A. Telomere length dynamics in early life: the blood-and-muscle model. *FASEB J*. 2018; 32:529–34. <https://doi.org/10.1096/fj.201700630R>

PMID:[28855279](#)

6. Daniali L, Benetos A, Susser E, Kark JD, Labat C, Kimura M, Desai K, Granick M, Aviv A. Telomeres shorten at equivalent rates in somatic tissues of adults. *Nat Commun.* 2013; 4:1597.
<https://doi.org/10.1038/ncomms2602> PMID:[23511462](#)
7. Rode L, Nordestgaard BG, Bojesen SE. Peripheral blood leukocyte telomere length and mortality among 64,637 individuals from the general population. *J Natl Cancer Inst.* 2015; 107:djv074.
<https://doi.org/10.1093/jnci/djv074> PMID:[25862531](#)
8. Müezziner A, Zaineddin AK, Brenner H. A systematic review of leukocyte telomere length and age in adults. *Ageing Res Rev.* 2013; 12:509–19.
<https://doi.org/10.1016/j.arr.2013.01.003> PMID:[23333817](#)
9. Salpea KD, Talmud PJ, Cooper JA, Maubaret CG, Stephens JW, Abelak K, Humphries SE. Association of telomere length with type 2 diabetes, oxidative stress and UCP2 gene variation. *Atherosclerosis.* 2010; 209:42–50.
<https://doi.org/10.1016/j.atherosclerosis.2009.09.070> PMID:[19889414](#)
10. Magi F, Dimauro I, Margheritini F, Duranti G, Mercatelli N, Fantini C, Ripani FR, Sabatini S, Caporossi D. Telomere length is independently associated with age, oxidative biomarkers, and sport training in skeletal muscle of healthy adult males. *Free Radic Res.* 2018; 52:639–47.
<https://doi.org/10.1080/10715762.2018.1459043> PMID:[29589779](#)
11. O'Donovan A, Pantell MS, Puterman E, Dhabhar FS, Blackburn EH, Yaffe K, Cawthon RM, Opresko PL, Hsueh WC, Satterfield S, Newman AB, Ayonayon HN, Rubin SM, et al, and Health Aging and Body Composition Study. Cumulative inflammatory load is associated with short leukocyte telomere length in the health, aging and body composition study. *PLoS One.* 2011; 6:e19687.
<https://doi.org/10.1371/journal.pone.0019687> PMID:[21602933](#)
12. Aviv A, Anderson JJ, Shay JW. Mutations, cancer and the telomere length paradox. *Trends Cancer.* 2017; 3:253–58.
<https://doi.org/10.1016/j.trecan.2017.02.005> PMID:[28718437](#)
13. Kuo CL, Pilling LC, Kuchel GA, Ferrucci L, Melzer D. Telomere length and aging-related outcomes in humans: A Mendelian randomization study in 261,000 older participants. *Ageing Cell.* 2019; 18:e13017.
<https://doi.org/10.1111/accel.13017> PMID:[31444995](#)
14. Gao X, Zhang Y, Mons U, Brenner H. Leukocyte telomere length and epigenetic-based mortality risk score: associations with all-cause mortality among older adults. *Epigenetics.* 2018; 13:846–57.
<https://doi.org/10.1080/15592294.2018.1514853> PMID:[30152726](#)
15. Pusceddu I, Kleber M, Delgado G, Herrmann W, März W, Herrmann M. Telomere length and mortality in the Ludwigshafen Risk and Cardiovascular Health study. *PLoS One.* 2018; 13:e0198373.
<https://doi.org/10.1371/journal.pone.0198373> PMID:[29920523](#)
16. Svensson J, Karlsson MK, Ljunggren Ö, Tivesten Å, Mellström D, Movérare-Skrtic S. Leukocyte telomere length is not associated with mortality in older men. *Exp Gerontol.* 2014; 57:6–12.
<https://doi.org/10.1016/j.exger.2014.04.013> PMID:[24793325](#)
17. Yuan X, Kronström M, Hellenius ML, Cederholm T, Xu D, Sjögren P. Longitudinal changes in leukocyte telomere length and mortality in elderly Swedish men. *Aging (Albany NY).* 2018; 10:3005–16.
<https://doi.org/10.18632/aging.101611> PMID:[30375983](#)
18. Haycock PC, Heydon EE, Kaptoge S, Butterworth AS, Thompson A, Willeit P. Leucocyte telomere length and risk of cardiovascular disease: systematic review and meta-analysis. *BMJ.* 2014; 349:g4227.
<https://doi.org/10.1136/bmj.g4227> PMID:[25006006](#)
19. D'Mello MJ, Ross SA, Briel M, Anand SS, Gerstein H, Paré G. Association between shortened leukocyte telomere length and cardiometabolic outcomes: systematic review and meta-analysis. *Circ Cardiovasc Genet.* 2015; 8:82–90.
<https://doi.org/10.1161/CIRCGENETICS.113.000485> PMID:[25406241](#)
20. Wang J, Dong X, Cao L, Sun Y, Qiu Y, Zhang Y, Cao R, Covasa M, Zhong L. Association between telomere length and diabetes mellitus: A meta-analysis. *J Int Med Res.* 2016; 44:1156–73.
<https://doi.org/10.1177/0300060516667132> PMID:[28322101](#)
21. Fasching CL. Telomere length measurement as a clinical biomarker of aging and disease. *Crit Rev Clin Lab Sci.* 2018; 55:443–65.
<https://doi.org/10.1080/10408363.2018.1504274> PMID:[30265166](#)
22. Zhu X, Han W, Xue W, Zou Y, Xie C, Du J, Jin G. The association between telomere length and cancer risk in population studies. *Sci Rep.* 2016; 6:22243.
<https://doi.org/10.1038/srep22243> PMID:[26915412](#)
23. Weischer M, Nordestgaard BG, Cawthon RM, Freiberg JJ, Tybjaerg-Hansen A, Bojesen SE. Short telomere

- length, cancer survival, and cancer risk in 47102 individuals. *J Natl Cancer Inst.* 2013; 105:459–68.
<https://doi.org/10.1093/jnci/djt016>
 PMID:[23468462](https://pubmed.ncbi.nlm.nih.gov/23468462/)
24. Cui Y, Cai Q, Qu S, Chow WH, Wen W, Xiang YB, Wu J, Rothman N, Yang G, Shu XO, Gao YT, Zheng W. Association of leukocyte telomere length with colorectal cancer risk: nested case-control findings from the Shanghai Women's Health Study. *Cancer Epidemiol Biomarkers Prev.* 2012; 21:1807–13.
<https://doi.org/10.1158/1055-9965.EPI-12-0657>
 PMID:[22911335](https://pubmed.ncbi.nlm.nih.gov/22911335/)
 25. Skinner HG, Gangnon RE, Litzelman K, Johnson RA, Chari ST, Petersen GM, Boardman LA. Telomere length and pancreatic cancer: a case-control study. *Cancer Epidemiol Biomarkers Prev.* 2012; 21:2095–100.
<https://doi.org/10.1158/1055-9965.EPI-12-0671>
 PMID:[23093543](https://pubmed.ncbi.nlm.nih.gov/23093543/)
 26. Araújo Carvalho AC, Tavares Mendes ML, da Silva Reis MC, Santos VS, Tanajura DM, Martins-Filho PR. Telomere length and frailty in older adults-A systematic review and meta-analysis. *Ageing Res Rev.* 2019; 54:100914.
<https://doi.org/10.1016/j.arr.2019.100914>
 PMID:[31170457](https://pubmed.ncbi.nlm.nih.gov/31170457/)
 27. Booth FW, Roberts CK, Laye MJ. Lack of exercise is a major cause of chronic diseases. *Compr Physiol.* 2012; 2:1143–211.
<https://doi.org/10.1002/cphy.c110025>
 PMID:[23798298](https://pubmed.ncbi.nlm.nih.gov/23798298/)
 28. Pedersen BK, Saltin B. Evidence for prescribing exercise as therapy in chronic disease. *Scand J Med Sci Sports.* 2006 (Suppl 1); 16:3–63.
<https://doi.org/10.1111/j.1600-0838.2006.00520.x>
 PMID:[16451303](https://pubmed.ncbi.nlm.nih.gov/16451303/)
 29. Denham J, O'Brien BJ, Charchar FJ. Telomere length maintenance and cardio-metabolic disease prevention through exercise training. *Sports Med.* 2016; 46:1213–37.
<https://doi.org/10.1007/s40279-016-0482-4>
 PMID:[26914269](https://pubmed.ncbi.nlm.nih.gov/26914269/)
 30. Denham J, Nelson CP, O'Brien BJ, Nankervis SA, Denniff M, Harvey JT, Marques FZ, Codd V, Zukowska-Szczechowska E, Samani NJ, Tomaszewski M, Charchar FJ. Longer leukocyte telomeres are associated with ultra-endurance exercise independent of cardiovascular risk factors. *PLoS One.* 2013; 8:e69377.
<https://doi.org/10.1371/journal.pone.0069377>
 PMID:[23936000](https://pubmed.ncbi.nlm.nih.gov/23936000/)
 31. Denham J, O'Brien BJ, Prestes PR, Brown NJ, Charchar FJ. Increased expression of telomere-regulating genes in endurance athletes with long leukocyte telomeres. *J Appl Physiol* (1985). 2016; 120:148–58.
<https://doi.org/10.1152/jappphysiol.00587.2015>
 PMID:[26586905](https://pubmed.ncbi.nlm.nih.gov/26586905/)
 32. Colon M, Hodgson A, Donlon E, Murphy JE. Effects of competitive triathlon training on telomere length. *J Aging Phys Act.* 2019; 27:510–14.
<https://doi.org/10.1123/japa.2018-0248>
 PMID:[30507277](https://pubmed.ncbi.nlm.nih.gov/30507277/)
 33. Muniesa CA, Verde Z, Diaz-Ureña G, Santiago C, Gutiérrez F, Díaz E, Gómez-Gallego F, Pareja-Galeano H, Soares-Miranda L, Lucia A. Telomere length in elite athletes. *Int J Sports Physiol Perform.* 2017; 12:994–96.
<https://doi.org/10.1123/ijsp.2016-0471>
 PMID:[27918657](https://pubmed.ncbi.nlm.nih.gov/27918657/)
 34. LaRocca TJ, Seals DR, Pierce GL. Leukocyte telomere length is preserved with aging in endurance exercise-trained adults and related to maximal aerobic capacity. *Mech Ageing Dev.* 2010; 131:165–67.
<https://doi.org/10.1016/j.mad.2009.12.009>
 PMID:[20064545](https://pubmed.ncbi.nlm.nih.gov/20064545/)
 35. Østhus IB, Sgura A, Berardinelli F, Alsnes IV, Brønstad E, Rehn T, Støbbakk PK, Hatle H, Wisløff U, Nauman J. Telomere length and long-term endurance exercise: does exercise training affect biological age? A pilot study. *PLoS One.* 2012; 7:e52769.
<https://doi.org/10.1371/journal.pone.0052769>
 PMID:[23300766](https://pubmed.ncbi.nlm.nih.gov/23300766/)
 36. Arsenis NC, You T, Ogawa EF, Tinsley GM, Zuo L. Physical activity and telomere length: impact of aging and potential mechanisms of action. *Oncotarget.* 2017; 8:45008–19.
<https://doi.org/10.18632/oncotarget.16726>
 PMID:[28410238](https://pubmed.ncbi.nlm.nih.gov/28410238/)
 37. Werner C, Fürster T, Widmann T, Pöss J, Roggia C, Hanhoun M, Scharhag J, Büchner N, Meyer T, Kindermann W, Haendeler J, Böhm M, Laufs U. Physical exercise prevents cellular senescence in circulating leukocytes and in the vessel wall. *Circulation.* 2009; 120:2438–47.
<https://doi.org/10.1161/CIRCULATIONAHA.109.861005>
 PMID:[19948976](https://pubmed.ncbi.nlm.nih.gov/19948976/)
 38. Rae DE, Vignaud A, Butler-Browne GS, Thornell LE, Sinclair-Smith C, Derman EW, Lambert MI, Collins M. Skeletal muscle telomere length in healthy, experienced, endurance runners. *Eur J Appl Physiol.* 2010; 109:323–30.
<https://doi.org/10.1007/s00421-010-1353-6>
 PMID:[20101406](https://pubmed.ncbi.nlm.nih.gov/20101406/)
 39. Kadi F, Ponsot E, Piehl-Aulin K, Mackey A, Kjaer M, Oskarsson E, Holm L. The effects of regular strength training on telomere length in human skeletal muscle.

- Med Sci Sports Exerc. 2008; 40:82–87.
<https://doi.org/10.1249/mss.0b013e3181596695>
PMID:[18091019](https://pubmed.ncbi.nlm.nih.gov/18091019/)
40. Mundstock E, Zatti H, Louzada FM, Oliveira SG, Guma FT, Paris MM, Rueda AB, Machado DG, Stein RT, Jones MH, Sarria EE, Barbé-Tuana FM, Mattiello R. Effects of physical activity in telomere length: systematic review and meta-analysis. *Ageing Res Rev.* 2015; 22:72–80.
<https://doi.org/10.1016/j.arr.2015.02.004>
PMID:[25956165](https://pubmed.ncbi.nlm.nih.gov/25956165/)
41. Lansdorp PM. Self-renewal of stem cells. *Biol Blood Marrow Transplant.* 1997; 3:171–78. PMID:[9360778](https://pubmed.ncbi.nlm.nih.gov/9360778/)
42. Aubert G, Lansdorp PM. Telomeres and aging. *Physiol Rev.* 2008; 88:557–79.
<https://doi.org/10.1152/physrev.00026.2007>
PMID:[18391173](https://pubmed.ncbi.nlm.nih.gov/18391173/)
43. Baerlocher GM, Rice K, Vulto I, Lansdorp PM. Longitudinal data on telomere length in leukocytes from newborn baboons support a marked drop in stem cell turnover around 1 year of age. *Aging Cell.* 2007; 6:121–23.
<https://doi.org/10.1111/j.1474-9726.2006.00254.x>
PMID:[17156085](https://pubmed.ncbi.nlm.nih.gov/17156085/)
44. Benetos A, Toupance S, Gautier S, Labat C, Kimura M, Rossi PM, Settembre N, Hubert J, Frimat L, Bertrand B, Boufi M, Flecher X, Sadoul N, et al. Short leukocyte telomere length precedes clinical expression of atherosclerosis: the blood-and-muscle model. *Circ Res.* 2018; 122:616–23.
<https://doi.org/10.1161/CIRCRESAHA.117.311751>
PMID:[29242238](https://pubmed.ncbi.nlm.nih.gov/29242238/)
45. Kadi F, Ponsot E. The biology of satellite cells and telomeres in human skeletal muscle: effects of aging and physical activity. *Scand J Med Sci Sports.* 2010; 20:39–48.
<https://doi.org/10.1111/j.1600-0838.2009.00966.x>
PMID:[19765243](https://pubmed.ncbi.nlm.nih.gov/19765243/)
46. Decary S, Mouly V, Hamida CB, Sautet A, Barbet JP, Butler-Browne GS. Replicative potential and telomere length in human skeletal muscle: implications for satellite cell-mediated gene therapy. *Hum Gene Ther.* 1997; 8:1429–38.
<https://doi.org/10.1089/hum.1997.8.12-1429>
PMID:[9287143](https://pubmed.ncbi.nlm.nih.gov/9287143/)
47. Ponsot E, Echaniz-Laguna A, Delis AM, Kadi F. Telomere length and regulatory proteins in human skeletal muscle with and without ongoing regenerative cycles. *Exp Physiol.* 2012; 97:774–84.
<https://doi.org/10.1113/expphysiol.2011.063818>
PMID:[22366562](https://pubmed.ncbi.nlm.nih.gov/22366562/)
48. Ponsot E, Lexell J, Kadi F. Skeletal muscle telomere length is not impaired in healthy physically active old women and men. *Muscle Nerve.* 2008; 37:467–72.
<https://doi.org/10.1002/mus.20964>
PMID:[18236464](https://pubmed.ncbi.nlm.nih.gov/18236464/)
49. Venturelli M, Morgan GR, Donato AJ, Reese V, Bottura R, Tarperi C, Milanese C, Schena F, Reggiani C, Naro F, Cawthon RM, Richardson RS. Cellular aging of skeletal muscle: telomeric and free radical evidence that physical inactivity is responsible and not age. *Clin Sci (Lond).* 2014; 127:415–21.
<https://doi.org/10.1042/CS20140051>
PMID:[24708050](https://pubmed.ncbi.nlm.nih.gov/24708050/)
50. Mathur S, Ardestani A, Parker B, Cappizzi J, Polk D, Thompson PD. Telomere length and cardiorespiratory fitness in marathon runners. *J Investig Med.* 2013; 61:613–15.
<https://doi.org/10.2310/JIM.0b013e3182814cc2>
PMID:[23360839](https://pubmed.ncbi.nlm.nih.gov/23360839/)
51. Rapp D, Scharhag J, Wagenpfeil S, Scholl J. Reference values for peak oxygen uptake: cross-sectional analysis of cycle ergometry-based cardiopulmonary exercise tests of 10 090 adult German volunteers from the Prevention First Registry. *BMJ Open.* 2018; 8:e018697.
<https://doi.org/10.1136/bmjopen-2017-018697>
PMID:[29506981](https://pubmed.ncbi.nlm.nih.gov/29506981/)
52. Werner C, Hanhoun M, Widmann T, Kazakov A, Semenov A, Pöss J, Bauersachs J, Thum T, Pfreundschuh M, Müller P, Haendeler J, Böhm M, Laufs U. Effects of physical exercise on myocardial telomere-regulating proteins, survival pathways, and apoptosis. *J Am Coll Cardiol.* 2008; 52:470–82.
<https://doi.org/10.1016/j.jacc.2008.04.034>
PMID:[18672169](https://pubmed.ncbi.nlm.nih.gov/18672169/)
53. Tucker LA. Physical activity and telomere length in U.S. men and women: an NHANES investigation. *Prev Med.* 2017; 100:145–51.
<https://doi.org/10.1016/j.ypmed.2017.04.027>
PMID:[28450121](https://pubmed.ncbi.nlm.nih.gov/28450121/)
54. Njajou OT, Cawthon RM, Damcott CM, Wu SH, Ott S, Garant MJ, Blackburn EH, Mitchell BD, Shuldiner AR, Hsueh WC. Telomere length is paternally inherited and is associated with parental lifespan. *Proc Natl Acad Sci U S A.* 2007; 104:12135–39.
<https://doi.org/10.1073/pnas.0702703104>
PMID:[17623782](https://pubmed.ncbi.nlm.nih.gov/17623782/)
55. Codd V, Nelson CP, Albrecht E, Mangino M, Deelen J, Buxton JL, Hottenga JJ, Fischer K, Esko T, Surakka I, Broer L, Nyholt DR, Mateo Leach I, et al. Identification of seven loci affecting mean telomere length and their association with disease. *Nat Genet.* 2013; 45:422–7, 427e1–2.
<https://doi.org/10.1038/ng.2528> PMID:[23535734](https://pubmed.ncbi.nlm.nih.gov/23535734/)
56. Yan X, Eynon N, Papadimitriou ID, Kuang J, Munson F,

- Tirosh O, O'Keefe L, Griffiths LR, Ashton KJ, Byrne N, Pitsiladis YP, Bishop DJ. The gene SMART study: method, study design, and preliminary findings. *BMC Genomics*. 2017 (Suppl 8); 18:821.
<https://doi.org/10.1186/s12864-017-4186-4>
PMID:[29143594](https://pubmed.ncbi.nlm.nih.gov/29143594/)
57. Borg GA. Psychophysical bases of perceived exertion. *Med Sci Sports Exerc*. 1982; 14:377–81.
<https://doi.org/10.1249/00005768-198205000-00012>
PMID:[7154893](https://pubmed.ncbi.nlm.nih.gov/7154893/)
58. Venables WN, Ripley BD. *Modern Applied Statistics with S*. (New York, NY: Springer) 2002.
59. Zeileis A, Kleiber C, Jackman S. Regression models for count data in R. *J Stat Softw*. 2008; 27:25.
<https://doi.org/10.18637/jss.v027.i08>
60. Benjamini Y, Hochberg Y. Controlling the false discovery rate: A practical and powerful approach to multiple testing. *J R Stat Soc B*. 1995; 57:289–300.
<https://doi.org/10.1111/j.2517-6161.1995.tb02031.x>

SUPPLEMENTARY MATERIALS

Supplementary Table 1. Association between fitness parameters and MTL or LTL adjusted for age.

	Model adjusted for age		
	VO _{2peak} (mL.kg ⁻¹ .min ⁻¹)	Peak Power (W.kg ⁻¹)	Aerobic Capacity Score (AU)
MTL	β= 0.07	β= 0.13	β= 0.08
	P= 0.59	P= 0.4	P= 0.5
	Q= 0.8	Q= 0.8	Q= 0.8
LTL	β= 0.034	β= 0.07	β= 0.06
	P= 0.5	P= 0.3	P= 0.3
	Q= 0.5	Q= 0.45	Q= 0.45

AU: Arbitrary Units; LTL: Leukocyte Telomere Length; MTL: Skeletal Muscle Telomere Length. P-values were adjusted for multiple testing using the false discovery rate (FDR). Effect size corresponds to the regression coefficient in the linear models and is interpreted as the change in MTL or LTL (log-transformed) adjusted for age per unit change in fitness parameter.



Minerva Access is the Institutional Repository of The University of Melbourne

Author/s:

Hiam, D;Smith, C;Voisin, S;Denham, J;Yan, X;Landen, S;Jacques, M;Alvarez-Romero, J;Garnham, A;Woessner, MN;Herrmann, M;Duque, G;Levinger, I;Eynon, N

Title:

Aerobic capacity and telomere length in human skeletal muscle and leukocytes across the lifespan

Date:

2020-01-15

Citation:

Hiam, D., Smith, C., Voisin, S., Denham, J., Yan, X., Landen, S., Jacques, M., Alvarez-Romero, J., Garnham, A., Woessner, M. N., Herrmann, M., Duque, G., Levinger, I. & Eynon, N. (2020). Aerobic capacity and telomere length in human skeletal muscle and leukocytes across the lifespan. *AGING-US*, 12 (1), pp.359-369. <https://doi.org/10.18632/aging.102627>.

Persistent Link:

<http://hdl.handle.net/11343/247340>

License:

[CC BY](#)