

# Aerobic exercise for adult patients with major depressive disorder in mental health services. A systematic review and meta-analysis

Morres, Ioannis; Hatzigeorgiadis, Antonis ; Stathi, Afroditi; Comoutos, Nikos ; Arpin-Cribbie, Chantal ; Charalampos Krommidas, Charalampos ; Theodorakis, Yannis

DOI:  
[10.1002/da.22842](https://doi.org/10.1002/da.22842)

License:  
Other (please specify with Rights Statement)

Document Version  
Peer reviewed version

Citation for published version (Harvard):  
Morres, I, Hatzigeorgiadis, A, Stathi, A, Comoutos, N, Arpin-Cribbie, C, Charalampos Krommidas, C & Theodorakis, Y 2018, 'Aerobic exercise for adult patients with major depressive disorder in mental health services. A systematic review and meta-analysis', *Depression and Anxiety*, vol. 36, no. 1, pp. 39-53.  
<https://doi.org/10.1002/da.22842>

[Link to publication on Research at Birmingham portal](#)

**Publisher Rights Statement:**  
Checked for eligibility: 12/09/2018

This is the peer reviewed version of the following article: Morres ID, Hatzigeorgiadis A, Stathi A, et al. Aerobic exercise for adult patients with major depressive disorder in mental health services: A systematic review and meta-analysis. *Depress Anxiety*. which has been published in final form at <https://doi.org/10.1002/da.22842>. This article may be used for non-commercial purposes in accordance with Wiley Terms and Conditions for Use of Self-Archived Versions.

## General rights

Unless a licence is specified above, all rights (including copyright and moral rights) in this document are retained by the authors and/or the copyright holders. The express permission of the copyright holder must be obtained for any use of this material other than for purposes permitted by law.

- Users may freely distribute the URL that is used to identify this publication.
- Users may download and/or print one copy of the publication from the University of Birmingham research portal for the purpose of private study or non-commercial research.
- User may use extracts from the document in line with the concept of 'fair dealing' under the Copyright, Designs and Patents Act 1988 (?)
- Users may not further distribute the material nor use it for the purposes of commercial gain.

Where a licence is displayed above, please note the terms and conditions of the licence govern your use of this document.

When citing, please reference the published version.

## Take down policy

While the University of Birmingham exercises care and attention in making items available there are rare occasions when an item has been uploaded in error or has been deemed to be commercially or otherwise sensitive.

If you believe that this is the case for this document, please contact [UBIRA@lists.bham.ac.uk](mailto:UBIRA@lists.bham.ac.uk) providing details and we will remove access to the work immediately and investigate.



## Abstract

1  
2 Although exercise is associated with depression relief, the effects of aerobic exercise  
3 (AE) interventions on clinically depressed adult patients have not been clearly supported. The  
4 purpose of this meta-analysis was to examine the antidepressant effects of AE vs. non-  
5 exercise comparators exclusively for depressed adults (18-65 years) recruited through mental  
6 health services with a referral or clinical diagnosis of major depression. Eleven e-databases  
7 and bibliographies of nineteen systematic reviews were searched for relevant randomized  
8 controlled trials. A random effects meta-analysis (Hedges'  $g$  criterion) was employed for  
9 pooling post-intervention scores of depression. Heterogeneity and publication bias were  
10 examined. Studies were coded considering characteristics of participants and interventions,  
11 outcomes and comparisons made, and study design; accordingly, sensitivity and subgroup  
12 analyses were calculated. Across 11 eligible trials (13 comparisons) involving 455 patients,  
13 AE was delivered on average for 45minutes, at moderate intensity, three times/week, for 9.2  
14 weeks and showed a significantly large overall antidepressant effect ( $g = -0.79$ , 95% CI = -  
15 1.00, -0.57,  $p < .00$ ) with low and non-statistically significant heterogeneity ( $I^2 = 21\%$ ). No  
16 publication bias was found. Sensitivity analyses revealed large or moderate to large  
17 antidepressant effects for AE ( $I^2 < 33\%$ ) among trials with lower risk of bias, trials with short-  
18 term interventions (up to 4 weeks), and trials involving individual preferences for exercise.  
19 Subgroup analyses revealed comparable effects for AE across various settings and delivery  
20 formats, and in both outpatients and inpatients regardless symptom severity. Notwithstanding  
21 the small number of trials reviewed, AE emerged as an effective antidepressant intervention.

## Introduction

Depression is a life threatening and disabling mental illness affecting increasingly large proportions of the society at an alarming rate worldwide (Global Burden of Disease Study 2013 Collaborators, 2015; Üstün, Ayuso-Mateos, Chatterji, Mathers, & Murray, 2004). Major depressive disorder (also referred to as clinical depression) is the most common type of depression seriously challenging health systems especially since it is often recurrent and treatment resistant.

Physical exercise is widely recommended in depression treatment (NICE, 2009; CANMAT, 2016; Stanton & Reburn, 2014). It has been associated with depression relief in various meta-analytic reviews (Craft & Landers, 1998; Rethorst, Wipfli, & Landers, 2009; Robertson, Robertson, Jepson, & Maxwell, 2012; Schuch et al., 2016; Silveira et al., 2013; Stanton & Reburn, 2014), even after risk of bias was considered (e.g., Rethorst et al., 2009; Schuch et al., 2016). In contrast, other meta-analyses set this association into question after coding for lower risk of bias (Cooney et al., 2013; Krogh, Hjorthøj, Speyer, Gluud, & Nordentoft, 2017; Krogh, Nordentoft, Sterne, & Lawlor, 2011).

Considering carefully the attributes of these meta-analytic studies, however, we identified methodological aspects that could potentially justify these equivocal conclusions. Particularly, in a number of trials reported in these meta-analyses the samples included participants who were recruited through mental health services but also through media advertisements. Also, in a number of trials the diagnosis of depression was not based on valid diagnostic criteria. Three meta-analytic studies, Krogh et al. (2011), Krogh et al. (2017) and Kvam, Kleppe, Nordhus, and Hovland (2016) have exclusively focused on exercise trials for patients with a diagnosis of major depression based on valid diagnostic criteria including the Diagnostic and Statistical Manual of Mental Disorders (American Psychiatric Association, 2013) or the International Classification of Disease (World Health Organization, 1992).

1           However, some of the trials in these three studies included media respondents. Media  
2 respondents may have strong outcome expectations or motivation to lifestyle changes;  
3 Blumenthal and Ong (2009) reported that community volunteers of exercise trials for  
4 depression are typically motivated to exercise. Instead, depressed patients recruited through  
5 health services do not seem to be comparably motivated, as they show high dropout rates  
6 from exercise on referral schemes (Crone, Johnston, Gidlow, Henley, & James, 2008; James  
7 et al., 2008; Tobi, Kemp, & Schmidt, 2017). In addition, a number of trials reviewed by these  
8 three meta-analyses included samples with other mood disorders (e.g., dysthymia), or samples  
9 with older adult (+65 years) or both adult (18-65 years) and older adult depressed patients.  
10 Older depressed adults show distinct differences in depression (Fiske, Wetherell, & Gatz,  
11 2009), demonstrate higher depression relief through exercise (Silveira et al., 2013), and are  
12 more likely to complete exercise on prescription programs than adult peers (James et al.,  
13 2008). Finally, these three meta-analyses included trials comparing exercise to other exercise  
14 activities (e.g., stretching). Such exercise activities, however, have been also shown to  
15 improve depression, thus confounding the true antidepressant effect of exercise intervention  
16 and misleading relevant conclusions (Schuch, Morres, Ekkekakis, Rosenbaum, & Stubbs,  
17 2017).

18           In addition to the issues identified above, the quality of the relevant meta-analysis  
19 could improve through a more appropriate assessment for the risk of bias. While exercise  
20 reviews for depression are typically coding trials for risk of bias, attributable to the  
21 association of systematic errors with overestimation of treatment efficacy (Moher et al., 1998;  
22 Schulz, 2001; Schulz, Chalmers, Hayes, & Altman, 1995), this coding has not been based on  
23 tools designed for physical therapy interventions, such as physical exercise. This seems  
24 essential as intervention-specific design aspects including dropouts may remain undetected  
25 and continue to influence conclusions, especially because exercise is perceived as requiring

1 higher time- and effort-demands than other health behaviors (Turk, Rudy, & Salovey, 1984).  
2 Relevant coding has been recently addressed by meta-analytic studies in the exercise-anxiety  
3 area (Ensari, Greenlee, Motl, & Petruzzello, 2015; Stonerock, Hoffman, Smith, & Blumenthal,  
4 2015). Finally, we identified in the literature that the antidepressant effects of aerobic exercise  
5 (AE) in particular remain unexplored by meta-analyses, although AE (e.g., walking) is the  
6 most pursued type of physical activity in mental health services (Sørensen, 2006).

7 Taking into account all the issues identified above, the purpose of our study was to  
8 explore the antidepressant effects of AE intervention, when compared to non-exercise  
9 comparators in adult patients, 18-65 years of age, recruited through mental health services  
10 with a referral or a clinical diagnosis of major depressive disorder. Towards this goal, coding  
11 for risk of bias was addressed based on a tool structured for physical therapy interventions.

## 12 **Method**

13 This review was conducted in accordance to the Preferred Items for Systematic  
14 Reviews and Meta-Analyses (PRISMA) statement that ensures quality through a standard list  
15 of 27 items (Moher, Liberati, Tetzlaff, & Altman, 2009).

### 16 *Literature search*

17 Eligibility criteria of study characteristics included; (1) participants 18-65 years old,  
18 recruited via mental health services with a referral or with a previous diagnosis of major  
19 depression (without psychotic features) as a primary disorder and not as a result of a mental or  
20 medical disorder/condition; (2) AE interventions as defined by the American College of  
21 Sports Medicine (ACSM) (Pollock et al., 1998); (3) comparison of AE interventions to any  
22 treatment form (e.g., psychotherapy, medication) or condition (e.g., waiting list) excluding  
23 exercise activities; (4) outcome measures of depression as a primary outcome; (5) studies with  
24 a design of a randomized controlled trial (RCT). Given, however, the limited number of  
25 exercise trials for clinically depressed adults seen in literature, it was an a priori decision of

1 this meta-analysis to (i) include comparative efficacy trials and (ii) compare AE to a second  
2 intervention (excluding exercise activities) should three-arm RCTs were allocated. Previous  
3 meta-analyses for exercise on depression are seen to typically include comparative efficacy  
4 trials (e.g., Krogh et al., 2017; Kvam et al., 2016). Finally, the search covered the period from  
5 1980 to March 2017 for trials written in English.

6 Two authors independently conducted the literature search. A total of ten electronic  
7 databases were searched: SCOPUS, PubMed, PEDro, and the PsyINFO, SPORTDiscus,  
8 Academic Search Complete, Education Resource Information Centre via EBSCO. Also, the  
9 Proquest Dissertations and Theses database was searched for unpublished studies. In addition,  
10 we searched the Trials Register of Promoting Health Interventions (TRoPHI; EPPI Centre),  
11 ClinicalTrials.Gov, and the World Health Organization (WHO) International Clinical Trials  
12 Registry Platform (ICTRP). We used medical subject headings (e.g., MESH) when possible  
13 or text word terms including: depressive disorder, depression, diagnosis, patients, adult  
14 (limiters 18-65years), and exercise, aerobic, running, swimming, jogging, walking or  
15 bicycling. The full search strategy for the PubMed is given in supplementary material 1.

16 Trials were initially screened through titles and abstracts. Full text versions were  
17 obtained subject to positive initial screening. Hand searching was also conducted; we  
18 screened the bibliographies of all major systematic reviews including Cochrane reviews in the  
19 exercise-depression area in the last 20 years. This led to the revision of 19 systematic reviews  
20 (supplementary material 2).

#### 21 *Data extraction*

22 Data were extracted and checked for accuracy and for duplicates onto prepared forms  
23 by the first and the fourth author. Subsequently, the two authors reached a consensus on the  
24 eligible trials. Researchers of eligible trials were contacted by e-mail to provide additional  
25 information on clinical/methodological aspects to their studies. Two reminders were sent

1 within a period of two months. All but one author provided clinical clarifications involving  
2 delivery formats of exercise interventions (supervision, location, individually or group) and  
3 status of participants (outpatients or inpatients). Also, three authors were contacted to provide  
4 methodological clarifications. Relevant information was obtained and included number of  
5 dropouts, concealed allocation, blind assessment or baseline balance.

## 6 *Coding*

7 Coding of eligible trials was based on the PICOS criteria that refer to Participants,  
8 Interventions, Comparisons, Outcome measures and Study design (PICOS) (Moher et al.,  
9 2009). Hence, coding included the following study characteristics: (1) participants:  
10 hospitalized or non-hospitalized (inpatients or outpatients); severity of depression (mild,  
11 moderate or severe); (2) intervention: duration ( $\leq 4$  weeks), frequency ( $< 3$  days/week, 3  
12 days/week or  $> 3$  days/week), intensity (lower, moderate or vigorous), setting (outdoors or  
13 indoors), social format (in groups or individually), delivery format (supervised or non-  
14 supervised); (3) comparisons: AE vs. non-exercise comparators; (4) outcome measures: rating  
15 (self- or clinician-rated); (5) study design: RCTs or comparative efficacy trials with higher or  
16 lower risk of bias scores of methodological qualities (score of  $< 6$  or  $\geq 6$ ) on the  
17 Physiotherapy Evidence Database scale (PEDro) (de Morton, 2009).

## 18 *Risk of bias*

19 The PEDro scale is a well-established comprehensive measure of methodological  
20 quality in the literature of physical therapy (Bhogal, Teasell, Foley, & Speechley, 2005),  
21 which has shown good psychometric properties (de Morton, 2009; Macedo et al., 2010;  
22 Maher, Sherrington, Herbert, Moseley, & Elkins, 2003). Also, the PEDro scale is increasingly  
23 used in various research areas (e.g., Knols, de Bruin, Shirato, Uebelhart, & Aaronson, 2010;  
24 Pan, Wang, Xie, Du, & Guo, 2014; Pinto et al., 2012), including the area of exercise and  
25 anxiety (e.g., Ensari et al., 2015). In the area of exercise for depression, two systematic



1 reviews have employed the PEDro scale (Perraton, Kumar, & Machotka, 2010; Stanton &  
2 Reaburn, 2014), but neither was a meta-analysis. Internal validity on the PEDro scale is  
3 assessed on a point system favoring between-groups comparisons and point  
4 estimates/variability measures; blinding patients, therapists and assessors; baseline balance,  
5 intention-to-treat, and drop-outs. The maximum score for the internal validity criteria is 10; in  
6 our study the maximum score was 8, as it is difficult, if not impossible, to blind  
7 patients/therapists in exercise trials for depression. A cut-off score of 6 was employed for  
8 classification of higher quality RCTs (lower risk of bias). This score represents the point of  
9 reference for high quality trials when using the PEDro scale (Maher et al., 2003). The first  
10 and the third authors independently assessed the methodological quality of each trial, and  
11 sought consensus on the relevant evaluations. Cohen's Kappa statistic was computed, and  
12 interpreted based on the Landis and Koch reference to estimating the inter-rater agreement  
13 (Landis & Koch, 1977).

#### 14 *Statistical analysis*

15         The software Comprehensive Meta-Analysis (Version 2.0, Biostat, Englewood, New  
16 Jersey) was used to calculate intervention effects. A random effects model using the Hedges'  
17 g criterion was employed to estimate standardized mean differences in depression scores from  
18 pre- to post-intervention between exercise and non-exercise comparators (Borenstein, Hedges,  
19 Higgins, & Rothstein, 2010). The selection of a random effects model lies upon the  
20 assumption that there is a sampling error (within-study error) and between-study variance.  
21 Also, the Hedges' g criterion was selected because it prevents overestimation of an effect-size  
22 when the retrieved studies are less than 20. Hedge's g algorithms were interpreted with the  
23 Cohen's d standards (Cohen, 1992) where values of .20, .50 and .80 point a small, moderate  
24 and large intervention effect, respectively.

1           Statistical heterogeneity was assessed with the Cochran's Q and  $I^2$  statistics for each  
2 trial (Higgins, Thompson, Deeks, & Altman, 2003) taking into account that  $I^2$  values up to  
3 40% are unlikely to be important (Higgins & Green, 2011). Publication bias was assessed by  
4 means of visual inspection of the funnel plots and the Begg-Mazumbar Kendall's tau (Begg &  
5 Mazumdar, 1994) and Egger bias test (Egger, Smith, Schneider, & Minder, 1997) for the  
6 main composite analysis. In case of significant publication bias, the trim and fill statistical  
7 procedure was considered on the right and left side of the plot (Duval & Tweedie, 2000). This  
8 procedure adds or removes studies to balance an asymmetrical funnel plot and adjusts the  
9 effect-size accordingly. In this manner, an unbiased estimate of the effect is provided. Further,  
10 the fail and safe criterion (Rosenthal, 1979) was employed to calculate the number of studies  
11 needed to nullify significant effects (e.g.,  $>.05$ ) for the main composite analysis. A fail-safe  
12 number of five times the number of reviewed comparisons plus 10 ( $5K+10$ ) is seen as the  
13 cutoff score for considering the results robust (Rosenthal, 1979).

14           Also, three sensitivity analyses were performed to explore the robustness of our main  
15 finding (overall effect-size). First, we coded lower risk of bias trials (PEDro score  $\geq 6$ )  
16 because meta-analytic reviews have reported equivocal conclusions on the association of  
17 exercise with antidepressant effects in high quality trials (e.g., Cooney et al., 2013; Krogh et  
18 al., 2017; Krogh et al., 2011; Rethorst et al., 2009; Schuch et al., 2016). In the second and  
19 third sensitivity analyses we coded trials with short-term (up to four weeks) or preference-  
20 oriented exercise interventions, respectively, because both interventional aspects comprised a  
21 promising strategy in the only currently available pragmatic RCT for exercise in adult  
22 depressed women who were living in the community and recruited through health services  
23 (Callaghan, Khalil, Morres, & Carter, 2011); both analyses would potentially contribute to the  
24 clarification of the translational value of our main finding for pragmatic settings (routine  
25 practice).



1 intervention to the same non-exercise comparator. Due to small number of exercise trials for  
2 depression, we compared AE to “group discussion” and allocated it as Sadeghi et al. (2016-a),  
3 whereas the comparison of AE to cognitive therapy was allocated as Sadeghi et al. (2016-b).  
4 The eleven eligible trials yield 13 comparisons and used continuous outcomes at pre/post-  
5 intervention with higher scores indicating more severe depression. Based on available  
6 evidence from six of the reviewed trials (see Table 1), an average of 65% of eligible patients  
7 entered into studies. Finally, trials were implemented in North and South America, Europe  
8 and Asia (Table 1).

### 9 *Study characteristics*

10 Only one eligible trial did not employ fully supervised-based AE (Mota-Pereira et al.,  
11 2011); it included one supervised session (in a hospital gymnasium) and four non-supervised  
12 home-based sessions per week. Also, AE was delivered on average three times/week, at  
13 moderate intensity, with a session length of 45minutes, and total program duration of 9.2  
14 weeks. A comparable number of trials recruited outpatients or inpatients, used equipment-  
15 based or -free modalities, administrated clinician- or self-rated outcomes, employed group or  
16 individual formats, and were delivered inside or outside a hospital. Also, a comparable  
17 number of trials compared AE to treatment as usual (TAU), antidepressant medication or  
18 psychological therapies. In two trials, AE was compared to non-exercise comparators of  
19 waiting list (Oertel-Knöchel et al., 2014) and self-administrative group discussion (Sadeghi et  
20 al., 2016). Seven trials were conducted indoors, and seven recruited patients with moderate-  
21 severe or severe depression. The average dropout rate for the intervention and non-exercise  
22 comparators was 14.8% and 14.5%, respectively.

### 23 *Risk of bias*

24 Seven trials (64%) received a score of  $\geq 6$  on the PEDro scale that indicates lower risk  
25 of bias. In contrast, four trials showed higher risk of bias, as they received a score of  $< 6$  on

1 the PEDro scale (see Table 2). Cohen's Kappa statistic was .77, portraying a substantial inter-  
2 rater reliability on the PEDro scoring (Landis & Koch, 1977).

### 3 *Meta-analysis*

4 Pooled results showed that AE revealed a significantly large overall antidepressant  
5 effect compared to non-exercise comparators ( $g = -0.79$ , 95% CI -1.00, -0.57,  $p < .00$ ) with  
6 low and non-significant heterogeneity ( $Q = 15.20$ ,  $p = 0.23$ ,  $I^2 = 21\%$ ). The Begg-Mazundar  
7 Kendall's tau ( $\tau = -0.21$ ,  $p = 0.29$ ) and Egger bias test (intercept -2.48,  $p = 0.12$ ) indicated no  
8 publication bias (see Table 3 and Figure 2). Also, the funnel plot did not show evidence of  
9 asymmetry (Figure 3). In addition, the fail-safe algorithm indicated that 218 studies with no  
10 antidepressant effect for AE would be required to nullify the significance of the main result.  
11 This indicates no publication bias, given that the relevant fail-safe standard ( $5k+10$ ) for this  
12 review is 75 studies ( $5 \times 13$  comparisons +10). Therefore, computation of trim and fill  
13 analysis did not appear to be essential.

### 14 *Sensitivity analyses*

15 The sensitivity analysis for lower risk of bias trials displayed a moderate to large  
16 effect for AE on depression ( $g = -0.70$ , 95% CI -0.94, -0.45,  $p < .00$ ) with negligible  
17 heterogeneity ( $I^2 = 2\%$ ). The sensitivity analysis for trials involving individual exercise  
18 preferences displayed a large effect for AE ( $g = -0.84$ , 95% CI -1.17, -0.51,  $p < .00$ ) with very  
19 low and non-significant heterogeneity ( $I^2 = 7\%$ ). The sensitivity analysis for trials with short-  
20 term interventions displayed a moderate to large effect for AE ( $g = -0.71$ , 95% CI -1.09, -0.34,  
21  $p < .00$ ) with low and non-significant heterogeneity ( $I^2 = 30\%$ ). Details are presented in Table  
22 3.

### 23 *Subgroup Analyses*

24 Eight subgroup analyses were conducted on the basis of the PICOS criteria (Moher et  
25 al., 2009) excluding the study design criterion (S) that was coded by our first sensitivity

1 analysis. All the analyses revealed statistically significant effects for AE. Furthermore, none  
2 of the analyses provided evidence for significant differences for effect-sizes between the  
3 different groups; no publication bias was recorded; and levels of heterogeneity were non-  
4 significant. The analyses are described below and the full statistics are presented in Table 4.

#### 5 *Participants*

6 Aerobic exercise showed large and moderate to large effects for outpatients and  
7 inpatients, and for patients with any severity classification in depression (g range = -.71 to -  
8 .97). In these samples heterogeneity was low and non-significant ( $I^2$  from 2% to 41%).

#### 9 *Intervention*

10 Large effects were found in trials where AE included equipment-free modalities, and  
11 was conducted in individual or group formats, and in indoor, outdoor or non-hospital settings  
12 (g range = -0.77 to -1.07). In addition, moderate to large or moderate effects were seen in  
13 equipment-based AE (g = -0.67, 95% CI -.98, -0.35,  $p < .00$ ) or in hospital settings (g = -0.61,  
14 95% CI -0.96, -0.27,  $p < .00$ ). In all computations, levels of heterogeneity were non-  
15 significant and ranged from 0% to 53%. Finally, no dropout differences were found between  
16 the aerobic and the non-exercise comparators (RD = 0.01, 95% CI -0.03, 0.05,  $p = 0.59$ ,  $I^2 =$   
17 0%).

#### 18 *Comparisons*

19 Compared to antidepressants/TAU, AE showed large antidepressant effect (g = -0.75,  
20 95% CI -1.01, -0.48,  $p < .00$ ). Similar effects were seen in the comparison of AE to  
21 psychological treatments when these treatments were performed as mono-therapy/part of  
22 multi-therapeutic program (g = -0.85, 95% CI -1.21, -0.48,  $p < .00$ ). Heterogeneity was low  
23 ( $I^2$  0% and 42%, respectively) and non-significant.

#### 24 *Outcome measures*

1 Large and moderate to large, respectively, antidepressant effects for AE were found in  
2 trials with self-rated ( $g = -0.97$ , 95% CI  $-1.35, -0.59$ ,  $p < .00$ ) or clinician-rated ( $g = -0.69$ ,  
3 95% CI  $-0.94, -0.44$ ,  $p < .00$ ) outcome measures. Heterogeneity was low ( $I^2$  26% and 9%,  
4 respectively) and non-significant. Also, a reduction of depression score by 4.5 points was seen  
5 in trials employing the clinician-rated outcome of the Hamilton Rating Scale for Depression  
6 (HAMD) ( $-4.48$ , 95% CI  $= -7.69, -1.25$ , standard error = 1.64,  $p < .00$ ), and by 7 points in  
7 trials employing the self-rated outcome of the Beck Depression Inventory-I or II ( $-6.96$ , 95%  
8 CI  $= -12.49, -1.42$ , standard error = 2.83,  $p = 0.01$ ).

## 9 **Discussion**

10 In this review, AE showed a significant large overall antidepressant effect ( $g = -0.79$ )  
11 on adult patients recruited via mental health services with a referral or a clinical diagnosis of  
12 major depression. Heterogeneity was low and non-significant ( $I^2 = 21\%$ ), and no signs of  
13 publication bias were found.

14 Our study included only trials with depressed patients recruited via mental health  
15 services; this could be considered a step forward in the literature. Previous meta-analyses  
16 included a number of trials with depressed persons recruited via media advertisements.  
17 However, media respondents may have a non-clinical depression, despite a high score in  
18 depression checklists, or a possible diagnosis given before/at study entry. Moreover, they may  
19 have strong outcome expectations and determination for lifestyle change; Blumenthal and  
20 Ong (2009) report that community volunteers for exercise trials for depression are typically  
21 motivated to exercise. Depressed patients instead, may have a more challenging clinical  
22 profile given that they have suffered tenacious symptoms, including psychosocial impairment  
23 that led to a mental health service, and they may often experience failure or disappointment  
24 because the service use uncovers the disease severity/complexity and the need for systematic  
25 care (Bursztajn & Barsky, 1985; Maguire, Cullen, O'Sullivan, & O'Grady-Walshe, 1995;

1 Morgan, 1989). To this extent, depressed patients referred to exercise on referral schemes are,  
2 unsurprisingly, showing high dropout rates, often the highest among all health referrals  
3 (Crone et al., 2008; James et al., 2008; Tobi et al., 2017). Therefore, our findings that stem  
4 from trials with patients with a referral or clinical diagnosis of depression are representative to  
5 routine practice and, thus, of additional value.

6 Another positive aspect of our study dealt with the inclusion of trials with only adult  
7 depressed patients of 18-65 years old. This separation appeared to be essential because older  
8 adult (+65years) depressed patients manifest distinct clinical differences in depression (Fiske  
9 et al., 2009) and higher depression relief through exercise (Silveira et al., 2013), and are more  
10 likely to complete exercise on prescription programs (James et al., 2008).

11 Importantly, 64% of our trials mirrored lower risk of bias (PEDro score  $\geq 6$ ). To the  
12 best of our knowledge, only two systematic (but not meta-analytic) reviews for exercise and  
13 depression have previously employed the PEDro scale (Perraton et al., 2010; Stanton &  
14 Reaburn, 2014). These studies reported a score of  $\geq 6$  on the PEDro scale for 43% (Perraton et  
15 al., 2010) and 100% (Stanton & Reaburn, 2014) of their reviewed trials. Exercise and anxiety  
16 meta-analyses (Ensari et al., 2015; Stonerock et al., 2015) that employed the PEDro scale  
17 have reported substantially fewer trials with lower risk of bias (33%) compared to our review.

18 Also, three sensitivity analyses were performed. The first recorded a significant  
19 moderate to large antidepressant effect for AE among lower risk of bias trials. This is in line  
20 to Rethorst et al. (2009) or Schuch et al. (2016) who found similar effects for exercise on  
21 depression after coding for lower risk of bias, but in contrast to reviews that reported no  
22 antidepressant effect for exercise after relevant coding (Krogh et al., 2017; Krogh et al., 2011).  
23 The present finding is of key-importance given that high risk of bias is linked with  
24 overestimation of treatment efficacy (Moher et al., 1998; Schulz, 2001; Schulz et al., 1995).  
25 Further, the use of the PEDro scale, which was developed to evaluate risk of bias for physical



1 therapy interventions such as physical exercise, suggests that when intervention-specific  
2 design aspects (e.g., dropouts) are included in the relevant evaluation do not confound results.

3 In the second sensitivity analysis, short-term AE (up to 4 weeks) showed a moderate  
4 to large effect on depression highlighting its vital role at the early stage of care, as the most  
5 frequent treatment of pharmacotherapy is typically requiring a period of 4 weeks before  
6 providing any benefit (Gartlehner et al., 2011; John M. Eisenberg Center for Clinical  
7 Decisions Communications Science, 2011; Seehusen & Sheridan, 2013). In further support of  
8 its vital role at the early stage of mental health care, AE has been also shown to improve well-  
9 being of major depressed patients after a single session (Bartholomew, Morrison, & Ciccolo,  
10 2005), and to decrease depression after ten consecutive daily sessions in a sample comprising  
11 both bipolar and major depressed patients (Knubben et al., 2007). In the third sensitivity  
12 analysis AE involving individual preferences revealed large antidepressant effects.  
13 Preference-based exercise appears to be a promising strategy in adolescent and adult general  
14 population segments (e.g., Hamlyn-Williams, Freeman, & Parfitt, 2014; Rose & Parfitt, 2007),  
15 in patients with various health disorders (Morton, Biddle, & Beauchamp, 2008) and in  
16 depressed patients participating in pragmatic RCTs (Callaghan et al., 2011; Carter et al.,  
17 2015; Morres, Stathi, Martinsen, & Sørensen, 2014). Therefore, this strategy warrants further  
18 attention by researchers and practitioners.

19 The findings of the second and third sensitivity analyses (up to four-week exercise and  
20 involvement of individual preferences) provide potentially important translational evidence  
21 for routine practice as they concur with the only currently available AE trial with a pragmatic  
22 design for adult depressed women ( $\leq 65$ years) recruited through health services (Callaghan et  
23 al., 2011). This RCT reported antidepressant effects for a four-week and preference-based AE  
24 program implemented in public gyms for depressed women living in the community  
25 (Callaghan et al., 2011).

1           Based on the subgroup analyses, AE brought about a large or moderate to large  
2 improvement in depression in a wide range of delivery formats; through equipment-based or  
3 equipment-free modalities, inside or outside a hospital, outdoors or indoors, in groups or  
4 individually, and in cohorts with outpatients or inpatients, and with different depressive  
5 symptom severity. In the two remaining subgroup analyses, AE favored over psychological  
6 treatments or antidepressants/TAU, demonstrating large effects on depression. Overall, AE  
7 was found to be comparably effective across all eight subgroup analyses. Noteworthy, three  
8 of our reviewed trials consisted of treatment-resistant depressed samples (Mota-Pereira et al.,  
9 2011; Oertel-Knöchel et al., 2014; Pilu et al., 2007). Another notable finding was that  
10 supervised AE had clinically meaningful antidepressant effects; in trials using the clinician-  
11 rated HAMD or the self-rated BDI outcomes, we found a reduction in depression score by 4.5  
12 and 7 points, respectively. Both reductions are considered clinically meaningful, as the  
13 relevant cutoff score is 3 points (NICE, 2009). Finally, AE showed similar dropout rates to  
14 non-exercise comparators. Given that exercise is perceived as requiring higher time- and  
15 effort-demands than other health behaviors (Turk et al., 1984), the lack of differences in  
16 dropout rates between AE and non-exercise treatment modalities for depression is of major  
17 importance.

18           Several limitations of the study require consideration. First, a small number of trials  
19 were allocated. However, this is widely seen as a limitation of the field. Also, we tried to run  
20 a robust analysis to offset threats caused by publication bias. In addition, most of our  
21 sensitivity and subgroup analyses (89%) computed at least five arms, which is considered an  
22 essential number to avoid imprecise results (Borenstein et al., 2009). Second, we did not code  
23 for side-effects of exercise because only Legrand and Neff (2016) explored side-effects, with  
24 37% of the sample reporting transient joint/muscular soreness, diarrhea or fatigue. Although  
25 these effects did not preclude patients from completing the interventions (Legrand & Neff,

1 2016), exploration of side-effects of exercise via standardized tests is an important priority.  
2 Based on limited data, almost 12% of mental health patients experience a side-effect by  
3 exercise (side-effects and patients' diagnoses were not clarified) (Sørensen, 2006). Also, only  
4 6% of depressed patients (including older adults) assigned to physical activity programs  
5 describe the potential of a side-effect (Searle et al., 2011).

6 Third, our reviewed trials did not fully describe design criteria or clinical  
7 characteristics. Although all but one author provided comprehensive feedback to our  
8 inquiries, future trials need to detail intervention and non-exercise comparators. Of particular  
9 importance, the contact time of exercisers with supervisors and/or peers may have a  
10 confounding impact on the favourable comparison of exercise to non-exercise comparators.  
11 Such confounding bias, however, did not seem to occur in our study; in our subgroup analyses  
12 AE was more effective than non-exercise comparators of either increased or decreased contact  
13 time with service providers/users (e.g., psychological treatments or antidepressant  
14 medication). Nevertheless, future trials should equalize groups in contact time and present  
15 relevant information in order to allow researchers draw even firmer conclusions on whether  
16 AE per se favours non-exercise comparators in depressed patients.

17 A final issue that needs to be discussed concerns the representativeness of our findings  
18 to routine practice. Specifically, 35% of the patients identified as eligible for participation by  
19 our reviewed trials appeared to be reluctant to entering into studies. However, considering the  
20 pessimistic profile of depression and the high time and effort demands of exercise, this  
21 percentage appears rather low. Nevertheless, barriers to entering into studies with AE  
22 programs need to be identified by future trials. Only two of our reviewed trials provided such  
23 information, reporting lack of interest as a predominant barrier (Legrand & Neff, 2016;  
24 Schuch et al., 2015). Since lack of interest is a key symptom of depression, recruiters may  
25 find it difficult to trigger interest to exercise these patients. However, a study conducted in

1 routine practice for mental health patients from both hospital and day-care centers has  
2 provided promising evidence (Sørensen, 2006). Particularly, exercise participation was  
3 predicted solely by intrinsic regulation, reflecting inherent pleasure and participation for its  
4 own sake (Sørensen, 2006). To this extent, autonomy supportive environments, providing  
5 options for the type and intensity of exercise, which promote intrinsically regulated exercise  
6 behavior (Ryan & Deci, 2000), might trigger interest in eligible but reluctant to exercise  
7 depressed patients.

### 8 **Conclusion**

9 This is the first meta-analytic study to compare the antidepressant effects of AE to  
10 treatments for depression excluding exercise activities, in adult patients (18-65) with a referral  
11 or clinical diagnosis of major depression, who were recruited through mental health services  
12 and not through media advertisements. Supervised AE compared favorably to treatments for  
13 depression across various delivery formats, comparisons or settings, and regardless symptom  
14 severity and type of outcome measure. Importantly, the antidepressant effect of AE was not  
15 affected among trials with lower risk of bias, trials with short-term (up to four weeks) exercise  
16 interventions, or trials with interventions involving individual preferences for exercise.  
17 Notwithstanding the limited number of trials reviewed, AE was found to be an effective  
18 antidepressant intervention.

1 Acknowledgments:

2 We would like to thank the following researches for providing additional information on their

3 trials: Brand, S., Carta, M.G., Kahl, K.G., Legrand, F., Martinsen, E.W., Mota-Pereira, J.,

4 Oertel-Knöchel, V., Rueter, M., Schuch, F.B., Veale, D.

## References

- 1  
2 American Psychiatric Association. (2013). Diagnostic and statistical manual of mental  
3 disorders (5th ed.). *Washington, DC: Author.*
- 4 Bartholomew, J. B., Morrison, D., & Ciccolo, J. T. (2005). Effects of Acute Exercise on  
5 Mood and Well-Being in Patients with Major Depressive Disorder. *Medicine and*  
6 *Science in Sports and Exercise, 37*(12), 2032-2037.  
7 doi:10.1249/01.mss.0000178101.78322.dd
- 8 Begg, C. B., & Mazumdar, M. (1994). Operating characteristics of a rank correlation test for  
9 publication bias. *Biometrics, 1088-1101.* doi:10.2307/2533446
- 10 Bhogal, S. K., Teasell, R. W., Foley, N. C., & Speechley, M. R. (2005). The PEDro scale  
11 provides a more comprehensive measure of methodological quality than the Jadad  
12 scale in stroke rehabilitation literature. *Journal of Clinical Epidemiology, 58*(7), 668-  
13 673. doi:10.1016/j.jclinepi.2005.01.002
- 14 Blumenthal, J. A., & Ong, L. (2009). A commentary on ‘Exercise and Depression’ (Mead  
15 et al., 2009): And the verdict is.... *Mental Health and Physical Activity, 2*(2), 97-99.  
16 doi:10.1016/j.mhpa.2009.08.001
- 17 Borenstein, M., Hedges, L. V., Higgins, J. P. T., & Rothstein, H. R. (2009). Random-Effects  
18 Model *Introduction to Meta-Analysis* (pp. 69-75): John Wiley & Sons, Ltd.
- 19 Borenstein, M., Hedges, L. V., Higgins, J. P. T., & Rothstein, H. R. (2010). A basic  
20 introduction to fixed-effect and random-effects models for meta-analysis. *Research*  
21 *Synthesis Methods, 1*(2), 97-111. doi:10.1002/jrsm.12
- 22 Bursztajn, H., & Barsky, A. J. (1985). Facilitating patient acceptance of a psychiatric referral.  
23 *Archives of Internal Medicine, 145*(1), 73-75.  
24 doi:10.1001/archinte.1985.00360010097015
- 25 Callaghan, P., Khalil, E., Morres, I., & Carter, T. (2011). Pragmatic randomised controlled  
26 trial of preferred intensity exercise in women living with depression. *BMC Public*  
27 *Health, 11*(1), 465. doi:10.1186/1471-2458-11-465
- 28 Carter, T., Guo, B., Turner, D., Morres, I., Khalil, E., Brighton, E., . . . Callaghan, P. (2015).  
29 Preferred intensity exercise for adolescents receiving treatment for depression: a  
30 pragmatic randomised controlled trial. *BMC Psychiatry, 15*(1), 1-12.  
31 doi:10.1186/s12888-015-0638-z
- 32 Cohen, J. (1992). Statistical Power Analysis. *Current Directions in Psychological Science,*  
33 *1*(3), 98-101. doi:10.1111/1467-8721.ep10768783
- 34 Cooney, G., Dwan, K., Greig, C. A., Lawlor, D. A., Rimer, J., Waugh, F. R., . . . Mead, G. E.  
35 (2013). Exercise for depression. *Cochrane Database Syst Rev, 9*, CD004366.  
36 doi:10.1002/14651858.CD004366.pub6
- 37 Craft, L. L., & Landers, D. M. (1998). The effect of exercise on clinical depression and  
38 depression resulting from mental illness: a meta-analysis. *Journal of Sport & Exercise*  
39 *Psychology, 20*, 339-357. doi:10.1123/jsep.20.4.339
- 40 Crone, D., Johnston, L. H., Gidlow, C., Henley, C., & James, D. V. B. (2008). Uptake and  
41 Participation in Physical Activity Referral Schemes in the UK: An Investigation of  
42 Patients Referred with Mental Health Problems. *Issues in Mental Health Nursing,*  
43 *29*(10), 1088-1097. doi:10.1080/01612840802319837
- 44 de Morton, N. A. (2009). The PEDro scale is a valid measure of the methodological quality of  
45 clinical trials: a demographic study. *Australian Journal of Physiotherapy, 55*(2), 129-  
46 133. doi:10.1016/S0004-9514(09)70043-1
- 47 Duval, S., & Tweedie, R. (2000). Trim and Fill: A Simple Funnel-Plot-Based Method of  
48 Testing and Adjusting for Publication Bias in Meta-Analysis. *Biometrics, 56*(2), 455-  
49 463. doi:10.1111/j.0006-341X.2000.00455.x

- 1 Egger, M., Smith, G. D., Schneider, M., & Minder, C. (1997). Bias in meta-analysis detected  
2 by a simple, graphical test. *BMJ*, *315*(7109), 629-634. doi:10.1136/bmj.315.7109.629
- 3 Ensari, I., Greenlee, T. A., Motl, R. W., & Petruzzello, S. J. (2015). Meta-analysis of acute  
4 exercise effects on state anxiety: An update of randomized controlled trials over the  
5 past 25 years. *Depression and Anxiety*, *32*(8), 624-634. doi:10.1002/da.22370
- 6 Fiske, A., Wetherell, J. L., & Gatz, M. (2009). Depression in Older Adults. *Annual Review of*  
7 *Clinical Psychology*, *5*, 363-389. doi:10.1146/annurev.clinpsy.032408.153621
- 8 Gartlehner, G., Hansen, R. A., Morgan, L. C., Thaler, K., Lux, L., Van Noord, M., . . .  
9 Wilkins, T. (2011). Comparative Benefits and Harms of Second-Generation  
10 Antidepressants for Treating Major Depressive Disorder: An Updated Meta-analysis.  
11 *Annals of Internal Medicine*, *155*(11), 772-785. doi:10.7326/0003-4819-155-11-  
12 201112060-00009
- 13 Global Burden of Disease Study 2013 Collaborators. (2015). Global, regional, and national  
14 incidence, prevalence, and years lived with disability for 301 acute and chronic  
15 diseases and injuries in 188 countries, 1990–2013: a systematic analysis for the Global  
16 Burden of Disease Study 2013. *The lancet*, *386*(9995), 743-800. doi:10.1016/S0140-  
17 6736(15)60692-4
- 18 Hamlyn-Williams, C. C., Freeman, P., & Parfitt, G. (2014). Acute affective responses to  
19 prescribed and self-selected exercise sessions in adolescent girls: an observational  
20 study. *BMC Sports Science, Medicine and Rehabilitation*, *6*(1), 1-9. doi:10.1186/2052-  
21 1847-6-35
- 22 Higgins, J. P., & Green, S. (2011). *Cochrane handbook for systematic reviews of*  
23 *interventions* (Vol. 4): John Wiley & Sons.
- 24 Higgins, J. P., Thompson, S. G., Deeks, J. J., & Altman, D. G. (2003). Measuring  
25 inconsistency in meta-analyses. *BMJ*, *327*(7414), 557-560.  
26 doi:10.1136/bmj.327.7414.557
- 27 James, D. V., Johnston, L. H., Crone, D., Sidford, A. H., Gidlow, C., Morris, C., & Foster, C.  
28 (2008). Factors associated with physical activity referral uptake and participation.  
29 *Journal of Sports Sciences*, *26*(2), 217-224. doi:10.1080/02640410701468863
- 30 John M. Eisenberg Center for Clinical Decisions Communications Science. (2011). Second-  
31 Generation Antidepressants for Treating Adult Depression: An Update *Comparative*  
32 *Effectiveness Review Summary Guides for Clinicians*. Rockville (MD): Agency for  
33 *Healthcare Research and Quality (US) 2007*.
- 34 Kerling, A., Tegtbur, U., Gützlaff, E., Kück, M., Borchert, L., Ates, Z., . . . Kahl, K. G. (2015).  
35 Effects of adjunctive exercise on physiological and psychological parameters in  
36 depression: A randomized pilot trial. *Journal of Affective Disorders*, *177*, 1-6.  
37 doi:10.1016/j.jad.2015.01.006
- 38 Knols, R. H., de Bruin, E. D., Shirato, K., Uebelhart, D., & Aaronson, N. K. (2010). Physical  
39 activity interventions to improve daily walking activity in cancer survivors. *BMC*  
40 *Cancer*, *10*, 406. doi:10.1186/1471-2407-10-406
- 41 Knubben, K., Reischies, F. M., Adli, M., Schlattmann, P., Bauer, M., & Dimeo, F. (2007). A  
42 randomised, controlled study on the effects of a short-term endurance training  
43 programme in patients with major depression. *British Journal of Sports Medicine*,  
44 *41*(1), 29-33. doi:10.1136/bjism.2006.030130
- 45 Krogh, J., Hjorthøj, C., Speyer, H., Glud, C., & Nordentoft, M. (2017). Exercise for patients  
46 with major depression: a systematic review with meta-analysis and trial sequential  
47 analysis. *BMJ open*, *7*(9). doi:10.1136/bmjopen-2016-014820
- 48 Krogh, J., Nordentoft, M., Sterne, J. A., & Lawlor, D. A. (2011). The effect of exercise in  
49 clinically depressed adults: systematic review and meta-analysis of randomized

- 1 controlled trials. *The Journal of Clinical Psychiatry*, 72(4), 529-538.  
2 doi:10.4088/JCP.08r04913blu
- 3 Kvam, S., Kleppe, C. L., Nordhus, I. H., & Hovland, A. (2016). Exercise as a treatment for  
4 depression: A meta-analysis. *Journal of Affective Disorders*, 202, 67-86.  
5 doi:10.1016/j.jad.2016.03.063
- 6 Landis, J. R., & Koch, G. G. (1977). The measurement of observer agreement for categorical  
7 data. *Biometrics*, 33(1), 159-174. doi:10.2307/2529310
- 8 \*Legrand, F. D., & Neff, E. M. (2016). Efficacy of exercise as an adjunct treatment for  
9 clinically depressed inpatients during the initial stages of antidepressant  
10 pharmacotherapy: An open randomized controlled trial. *Journal of Affective Disorders*,  
11 191, 139-144. doi:10.1016/j.jad.2015.11.047
- 12 Macedo, L. G., Elkins, M. R., Maher, C. G., Moseley, A. M., Herbert, R. D., & Sherrington,  
13 C. (2010). There was evidence of convergent and construct validity of physiotherapy  
14 evidence database quality scale for physiotherapy trials. *Journal of Clinical  
15 Epidemiology*, 63(8), 920-925. doi:10.1016/j.jclinepi.2009.10.005
- 16 Maguire, N., Cullen, C., O'Sullivan, M., & O'Grady-Walshe, A. (1995). What do Dublin GPs  
17 expect from a psychiatric referral? *Irish Medical Journal*, 88(6), 215-216.
- 18 Maher, C. G., Sherrington, C., Herbert, R. D., Moseley, A. M., & Elkins, M. (2003).  
19 Reliability of the PEDro scale for rating quality of randomized controlled trials.  
20 *Physical Therapy*, 83(8), 713-721. doi:10.1093/ptj/83.8.713
- 21 \*Martinsen, E. W., Medhus, A., & Sandvik, L. (1985). Effects of aerobic exercise on  
22 depression: a controlled study. *BMJ*, 291(6488), 109-109.  
23 doi:10.1136/bmj.291.6488.109
- 24 Moher, D., Liberati, A., Tetzlaff, J., & Altman, D. G. (2009). Preferred Reporting Items for  
25 Systematic Reviews and Meta-Analyses: The PRISMA Statement. *Journal of Clinical  
26 Epidemiology*, 62(10), 1006-1012. doi:10.1016/j.jclinepi.2009.06.005
- 27 Moher, D., Pham, B., Jones, A., Cook, D. J., Jadad, A. R., Moher, M., . . . Klassen, T. P.  
28 (1998). Does quality of reports of randomised trials affect estimates of intervention  
29 efficacy reported in meta-analyses? *The lancet*, 352(9128), 609-613.  
30 doi:10.1016/s0140-6736(98)01085-x
- 31 Morgan, D. (1989). Psychiatric cases: an ethnography of the referral process. *Psychological  
32 Medicine*, 19(03), 743-753. doi:10.1017/s003329170002434x
- 33 Morres, I., Stathi, A., Martinsen, E. W., & Sørensen, M. (2014). Physical exercise and major  
34 depressive disorder in adult patients. In A. G. Papaioannou & D. Hackfort (Eds.),  
35 *Routledge Companion to Sport and Exercise Psychology: Global perspectives and  
36 fundamental concepts* (pp. pp. 823-834). London: Taylor & Francis.
- 37 Morton, K. L., Biddle, S. J., & Beauchamp, M. R. (2008). Changes in self-determination  
38 during an exercise referral scheme. *Public Health*, 122(11), 1257-1260.  
39 doi:10.1016/j.puhe.2007.11.006
- 40 \*Mota-Pereira, Silverio, J., Carvalho, S., Ribeiro, J. C., Fonte, D., & Ramos, J. (2011).  
41 Moderate exercise improves depression parameters in treatment-resistant patients with  
42 major depressive disorder. *Journal of Psychiatric Research*, 45(8), 1005-1011.  
43 doi:10.1016/j.jpsychires.2011.02.005
- 44 NICE. (2009). Depression in adults: recognition and management. *NICE guidelines [CG90]*,  
45 London, UK.
- 46 \*Oertel-Knöchel, V., Mehler, P., Thiel, C., Steinbrecher, K., Malchow, B., Tesky, V., . . .  
47 Hänsel, F. (2014). Effects of aerobic exercise on cognitive performance and individual  
48 psychopathology in depressive and schizophrenia patients. *European Archives of  
49 Psychiatry and Clinical Neuroscience*, 264(7), 589-604. doi:10.1007/s00406-014-  
50 0485-9



- 1 Pan, L., Wang, M., Xie, X., Du, C., & Guo, Y. (2014). Effects of anabolic steroids on chronic  
2 obstructive pulmonary disease: a meta-analysis of randomised controlled trials. *PLoS*  
3 *One*, 9(1), e84855. doi:10.1371/journal.pone.0084855
- 4 \*Perraton, L. G., Kumar, S., & Machotka, Z. (2010). Exercise parameters in the treatment of  
5 clinical depression: a systematic review of randomized controlled trials. *Journal of*  
6 *Evaluation in Clinical Practice*, 16(3), 597-604. doi:10.1111/j.1365-  
7 2753.2009.01188.x
- 8 \*Pilu, A., Sorba, M., Hardoy, M., Floris, A., Mannu, F., Seruis, M., . . . Carta, M. (2007).  
9 Efficacy of physical activity in the adjunctive treatment of major depressive disorders:  
10 preliminary results. *Clinical Practice and Epidemiology in Mental Health*, 3(1), 8.  
11 doi:10.1186/1745-0179-3-8
- 12 Pinto, R. Z., Maher, C. G., Ferreira, M. L., Ferreira, P. H., Hancock, M., Oliveira, V. C., . . .  
13 Koes, B. (2012). Drugs for relief of pain in patients with sciatica: systematic review  
14 and meta-analysis. *BMJ*, 344. doi:10.1136/bmj.e497
- 15 Pollock, M. L., Gaesser, G. A., Butcher, J. D., Després, J.-P., Dishman, R. K., Franklin, B. A.,  
16 & Garber, C. E. (1998). ACSM Position Stand: The Recommended Quantity and  
17 Quality of Exercise for Developing and Maintaining Cardiorespiratory and Muscular  
18 Fitness, and Flexibility in Healthy Adults. *Medicine and Science in Sports and*  
19 *Exercise*, 30(6), 975-991. doi:10.1097/00005768-199806000-00032
- 20 Ravindran, A. V., Balneaves, L. G., Faulkner, G., Ortiz, A., McIntosh, D., Morehouse, R.  
21 L., . . . the, C. D. W. G. (2016). Canadian Network for Mood and Anxiety Treatments  
22 (CANMAT) 2016 Clinical Guidelines for the Management of Adults with Major  
23 Depressive Disorder: Section 5. Complementary and Alternative Medicine Treatments.  
24 *Canadian Journal of Psychiatry. Revue Canadienne de Psychiatrie*, 61(9), 576-587.  
25 doi:10.1177/0706743716660290
- 26 Rethorst, C. D., Wipfli, B. M., & Landers, D. M. (2009). The antidepressive effects of  
27 exercise. *Sports Medicine*, 39(6), 491-511. doi:10.2165/00007256-200939060-00004
- 28 Robertson, R., Robertson, A., Jepson, R., & Maxwell, M. (2012). Walking for depression or  
29 depressive symptoms: a systematic review and meta-analysis. *Mental Health and*  
30 *Physical Activity*, 5(1), 66-75. doi:10.1016/j.mhpa.2012.03.002
- 31 Rose, E. E., & Parfitt, G. (2007). A quantitative analysis and qualitative explanation of the  
32 individual differences in affective responses to prescribed and self-selected exercise  
33 intensities. *Journal of Sport and Exercise Psychology*, 29(3), 281-309.  
34 doi:10.1123/jsep.29.3.281
- 35 Rosenthal, R. (1979). The file drawer problem and tolerance for null results. *Psychological*  
36 *Bulletin*, 86(3), 638-641. doi:10.1037/0033-2909.86.3.638
- 37 Rueter, M. A. (1980). *The effect of running on individuals who are clinically depressed*. (MSc  
38 Thesis Master Thesis), Pennsylvania State University, USA.
- 39 Ryan, R. M., & Deci, E. L. (2000). Self-determination theory and the facilitation of intrinsic  
40 motivation, social development, and well-being. *American Psychologist*, 55(1), 68-78.  
41 doi:10.1037/0003-066X.55.1.68
- 42 \*Sadeghi, K., Ahmadi, S. M., Ahmadi, S. M., Rezaei, M., Miri, J., Abdi, A., . . . Jamshidi, K.  
43 (2016). A comparative study of the efficacy of cognitive group therapy and aerobic  
44 exercise in the treatment of depression among the students. *Global journal of health*  
45 *science*, 8(10), 1. doi:10.5539/gjhs.v8n10p1
- 46 Sadeghi, K., Ahmadi, S. M., Ahmadi, S. M., Rezaei, M., Miri, J., Abdi, A., . . . Jamshidi, K.  
47 (2016-a). A comparative study of the efficacy of cognitive group therapy and aerobic  
48 exercise in the treatment of depression among the students. *Global journal of health*  
49 *science*, 8(10), 1. doi:10.5539/gjhs.v8n10p1

- 1 Sadeghi, K., Ahmadi, S. M., Ahmadi, S. M., Rezaei, M., Miri, J., Abdi, A., . . . Jamshidi, K.  
2 (2016-b). A comparative study of the efficacy of cognitive group therapy and aerobic  
3 exercise in the treatment of depression among the students. *Global journal of health*  
4 *science*, 8(10), 1. doi:10.5539/gjhs.v8n10p1
- 5 \*Salehi, I., Hosseini, S. M., Haghighi, M., Jahangard, L., Bajoghli, H., Gerber, M., . . . Brand,  
6 S. (2016). Electroconvulsive therapy (ECT) and aerobic exercise training (AET)  
7 increased plasma BDNF and ameliorated depressive symptoms in patients suffering  
8 from major depressive disorder. *Journal of Psychiatric Research*, 76, 1-8.  
9 doi:10.1016/j.jpsychires.2016.01.012
- 10 Salehi, I., Hosseini, S. M., Haghighi, M., Jahangard, L., Bajoghli, H., Gerber, M., . . . Brand,  
11 S. (2016-a). Electroconvulsive therapy (ECT) and aerobic exercise training (AET)  
12 increased plasma BDNF and ameliorated depressive symptoms in patients suffering  
13 from major depressive disorder. *Journal of Psychiatric Research*, 76, 1-8.  
14 doi:10.1016/j.jpsychires.2016.01.012
- 15 Salehi, I., Hosseini, S. M., Haghighi, M., Jahangard, L., Bajoghli, H., Gerber, M., . . . Brand,  
16 S. (2016-b). Electroconvulsive therapy (ECT) and aerobic exercise training (AET)  
17 increased plasma BDNF and ameliorated depressive symptoms in patients suffering  
18 from major depressive disorder. *Journal of Psychiatric Research*, 76, 1-8.  
19 doi:10.1016/j.jpsychires.2016.01.012
- 20 Schuch, F. B., Morres, I. D., Ekkekakis, P., Rosenbaum, S., & Stubbs, B. (2017). A critical  
21 review of exercise as a treatment for clinically depressed adults: time to get pragmatic.  
22 *Acta Neuropsychiatrica*, 29(2), 65-71. doi:10.1017/neu.2016.21
- 23 Schuch, F. B., Vancampfort, D., Richards, J., Rosenbaum, S., Ward, P. B., & Stubbs, B.  
24 (2016). Exercise as a treatment for depression: A meta-analysis adjusting for  
25 publication bias. *Journal of Psychiatric Research*, 77, 42-51.  
26 doi:10.1016/j.jpsychires.2016.02.023
- 27 \*Schuch, Vasconcelos-Moreno, M. P., Borowsky, C., Zimmermann, A. B., Rocha, N. S., &  
28 Fleck, M. P. (2015). Exercise and severe major depression: effect on symptom  
29 severity and quality of life at discharge in an inpatient cohort. *Journal of Psychiatric*  
30 *Research*, 61(0), 25-32. doi:10.1016/j.jpsychires.2014.11.005
- 31 Schulz, K. F. (2001). Assessing allocation concealment and blinding in randomised controlled  
32 trials: why bother? *Evidence Based Nursing*, 4(1), 4-6. doi:10.1136/ebn.4.1.4
- 33 Schulz, K. F., Chalmers, I., Hayes, R. J., & Altman, D. G. (1995). Empirical evidence of bias:  
34 dimensions of methodological quality associated with estimates of treatment effects in  
35 controlled trials. *JAMA*, 273(5), 408-412. doi:10.1001/jama.1995.03520290060030
- 36 Searle, A., Calnan, M., Lewis, G., Campbell, J., Taylor, A., & Turner, K. (2011). Patients'  
37 views of physical activity as treatment for depression: a qualitative study. *The British*  
38 *Journal of General Practice*, 61(585), e149-e156. doi:10.3399/bjgp11X567054
- 39 Seehusen, D. A., & Sheridan, R. (2013). Second-generation antidepressants for depression in  
40 adults. *American Family Physician*, 88(10), 687-689.
- 41 Silveira, H., Moraes, H., Oliveira, N., Coutinho, E. S., Laks, J., & Deslandes, A. (2013).  
42 Physical exercise and clinically depressed patients: a systematic review and meta-  
43 analysis. *Neuropsychobiology*, 67(2), 61-68. doi:10.1159/000345160
- 44 Sørensen, M. (2006). Motivation for physical activity of psychiatric patients when physical  
45 activity was offered as part of treatment. *Scandinavian Journal of Medicine and*  
46 *Science in Sports*, 16(6), 391-398. doi:10.1111/j.1600-0838.2005.00514.x
- 47 Stanton, R., & Reaburn, P. (2014). Exercise and the treatment of depression: A review of the  
48 exercise program variables. *Journal of Science and Medicine in Sport*, 17(2), 177-182.  
49 doi:10.1016/j.jsams.2013.03.010

- 1 Sterne, J. A. C., Sutton, A. J., Ioannidis, J. P. A., Terrin, N., Jones, D. R., Lau, J., . . . Higgins,  
2 J. P. T. (2011). Recommendations for examining and interpreting funnel plot  
3 asymmetry in meta-analyses of randomised controlled trials. *BMJ*, *343*.  
4 doi:10.1136/bmj.d4002
- 5 Stonerock, G. L., Hoffman, B. M., Smith, P. J., & Blumenthal, J. A. (2015). Exercise as  
6 Treatment for Anxiety: Systematic Review and Analysis. *Annals of behavioral*  
7 *medicine : a publication of the Society of Behavioral Medicine*, *49*(4), 542-556.  
8 doi:10.1007/s12160-014-9685-9
- 9 Tobi, P., Kemp, P., & Schmidt, E. (2017). Cohort differences in exercise adherence among  
10 primary care patients referred for mental health versus physical health conditions.  
11 *Primary Health Care Research & Development*, *18*(5), 463-471.  
12 doi:10.1017/S1463423617000214
- 13 Turk, D. C., Rudy, T. E., & Salovey, P. (1984). Health protection: Attitudes and behaviors of  
14 LPNs, teachers, and college students. *Health Psychology*, *3*(3), 189-210.  
15 doi:10.1037/0278-6133.3.3.189
- 16 Üstün, T. B., Ayuso-Mateos, J. L., Chatterji, S., Mathers, C., & Murray, C. J. L. (2004).  
17 Global burden of depressive disorders in the year 2000. *The British Journal of*  
18 *Psychiatry*, *184*(5), 386-392. doi:10.1192/bjp.184.5.386
- 19 \*Veale, D., Le Fevre, K., Pantelis, C., de Souza, V., Mann, A., & Sargeant, A. (1992).  
20 Aerobic exercise in the adjunctive treatment of depression: a randomized controlled  
21 trial. *Journal of the Royal Society of Medicine*, *85*(9), 541-544.  
22 doi:10.1177/014107689208500910
- 23 Veale, D., Le Fevre, K., Pantelis, C., de Souza, V., Mann, A., & Sargeant, A. (1992-a).  
24 Aerobic Exercise in the Adjunctive Treatment of Depression: A Randomized  
25 Controlled Trial. *Journal of the Royal Society of Medicine*, *85*(9), 541-544.  
26 doi:10.1177/014107689208500910
- 27 World Health Organization. (1992). *The ICD-10 classification of mental and behavioural*  
28 *disorders: clinical descriptions and diagnostic guidelines*: Geneva: World Health  
29 Organization.  
30

Table 1. Description of reviewed trials

Trial, Country, Sample	Interventions	N/ ♀ %	age m/sd	attend. dropouts %	physiolog. gains	concurr. psychiatr. therap. %	depression pre/post
Mota-Pereira et al., (2011) Portugal outpatients	Eligible patients entered into study: 73% <u>A. Aerobic Exercise (more depressed)</u> Walking for 30-45min/5times/week/12weeks. One weekly session was individual/supervised by a sport scientist at hospital on treadmill, 5.0km/h/0° grade equal to 3.7-4 METs (moderate intensity). Home-based walking 4times/week, intensity prescription via accelerometers (>1952 counts) or perceived exertion (e.g., no shortness of breath). Compliance support: reminders, staff emphasized the exercise benefits, consulted family members on social support for exercise.	22/ 57.9	48.6/ 2.3	91 14	--- ---	100 <sup>A</sup>	HAMD-17 severe/ improved to mild <sup>§,†</sup>
	<u>B. Usual pharmacotherapy (control group)</u> Non-sedating antidepressants.	11/ 80	45.3/ 3.1	--- 9	--- ---	---	mild/ not improved
Major Inclusion Criteria : treatment resistance after 9-15 months of combined pharmacotherapy, no regular exercising, no psychotherapeutic treatment, no change in medication in the last 6weeks							
Martinsen et al., (1985) Norway inpatients	<u>A. Aerobic Exercise</u> Group-based/supervised outdoor jogging & walking for 60min, 3times/week/9weeks at 50-70% VO <sub>2</sub> max, supplemented by bicycling and/or swimming sessions at the patient's preference.	28/ ---	--- ---	--- 14.2	VO <sub>2</sub> max <sup>§,†</sup>	32 <sup>A</sup> 100 <sup>P,OT</sup>	BDI moderate/ improved to mild <sup>§,†</sup>
	<u>B. Occupational therapy (control group)</u> Occupational therapy 60min, 3 times/week/9weeks.	21/ ---	--- ---	--- 10.5	not improved	66 <sup>A</sup> 100 <sup>P</sup>	moderate/ improved <sup>§</sup>
Major Inclusion Criteria: both males and females							

Table 1 continued

Trial, Country, Sample	Interventions	N/ ♀ %	age m/sd	attend. dropouts %	physiolog. gains	concurr. psychiatr. therap. %	depression pre/post
Schuch et al., (2015)	Eligible patients entered into study: 47%						
Brazil inpatients	<u>A. Aerobic Exercise</u> Exercise for 45min, 3times/week/3weeks at self-selected type (stationary bicycle, treadmill, or stepper) and intensity exercise, provided that 16kcal/kg/week are completed. Individual/supervised at hospital.	25/ 72	38.8/ 11.5	--- 8	--- ---	80 <sup>A</sup> 8 <sup>ECT</sup>	HAMD-17 severe/ improved to normal <sup>§, †</sup>
	<u>B. Treatment as usual (control group)</u> All patients were prescribed antidepressants. ECT was prescribed to 8% of the patients.	25/ 76	41.7/ 10.4	--- 4	--- ---	--- ---	severe/ improved to mild <sup>§</sup>
Major Inclusion Criteria: a score of $\geq 25$ on HAMD-17							
Rueter, (1980)	<u>A. Aerobic Exercise</u> Individual/supervised (co-running) running for at least 20min, 3times/week/10weeks (public indoors sport track). Pace allowed talking, non-competitive, no distance/speed criteria.	11/ ---	--- ---	--- 18	--- ---	100 <sup>A</sup>	BDI moderate/ improved to minimal <sup>§, †</sup>
USA outpatients	<u>B. Counseling Therapy (control group)</u> Group & individual counseling for 10weeks, at least 30min/week. Also, on waiting list for participating in the aerobic exercise program.	11/ ---	--- ---	--- 18	--- ---	---	moderate/ not improved
Major Inclusion Criteria: both males and females, a score of $> 15$ on BDI							

Table 1 continued

Trial, Country, Sample	Interventions	N/ ♀ %	age m/sd	attend. dropouts %	physiolog. gains	concurr. psychiatr. therap. %	depression pre/post
Sadeghi et al., (2016)  Iran  outpatients	<u>A. Aerobic exercise</u> Supervised, 50-60min/8weeks. Warm up: 10min stretching, breathing, exercises of upper/lower limbs, running in place at low intensity. The same exercises 60-80%MHR, 30-35min. Cooling down: same exercises at low intensity, 10-15min.	16/ 81	20.9/ 1.0	--- ---	--- ---	---	BDI moderate/ improved to mild <sup>§, †</sup>
	<u>B. Cognitive Therapy</u> Cognitive therapy for 8 weeks, 2 times/week/4weeks, and 1 time/week in the remaining 4 weeks.	16/ 75	21.1/ 1.2	--- ---	--- ---	---	moderate/ improved to mild <sup>§, †</sup>
	<u>C. Group meetings (control group)</u> Self-administrative group meetings of 45-60min to discuss issues raised by the group members.	14/ 79	20.9/ 1.2	--- ---	--- ---	---	moderate/not improved
Major Inclusion Criteria: BDI score 13-28, no medication							
Salehi et al., (2016)  Iran  inpatients	Eligible patients entered into study: 86% <u>A. Aerobic exercise</u> Individual/supervised cycling/treadmill for 40-45min, 3times/week/4weeks at 60-75% VO2max.	20/ 25	29/ 5.1	100 0	--- ---	100 <sup>A</sup>	HAMD-17 severe/improved to mild <sup>§</sup>
	<u>B. Electroconvulsive Therapy</u> ECT 3times/week/4weeks.	20/ 35	29.7/ 6.28	100 0	--- ---	100 <sup>A</sup>	severe/ improved to mild <sup>§</sup>
	<u>C. Aerobic Exercise + Electroconvulsive Therapy</u> Aerobic exercise + ECT as described above.	20/ 35	30.2/ 6.2	100 0	--- ---	100 <sup>A</sup>	severe/ improved to mild <sup>§</sup>
Major Inclusion Criteria: age 25 to 40, HAMD score of >2							

Table 1 continued

Trial, Country, Sample	Interventions	N/ ♀ %	age m/sd	attend. dropouts %	physiolog. gains	concurr. psychiatr. therap. %	depression pre/post
Pilu et al., (2007)  Italy  outpatients	Eligible patients entered into study: 71%						
	<u>A. Aerobic Exercise</u> Group/supervised for 60min/2times/week/32weeks, 5min warm up, 50min on a self-selected cardio-fitness machine, change every 4min (20 options), 5min cooling down. Community-based gym.	10/ 100	--- ---	--- 0	--- ---	100 <sup>A</sup>	HAMD-17 severe/ improved to normal-mild <sup>§,†</sup>
	<u>B. Pharmacotherapy (control group)</u> 70% on SSRIs, 10% on SNRIs, and 5% of the patients on SSRI + SNRI + Tricyclic antidepressants.	20/ 100	--- ---	--- 0	--- ---	---	severe/not improved
Major Inclusion Criteria: female, 2month persistence of score of >13 on HAMD-17 despite medication							
Legrand et al., (2016)  France  inpatients	Eligible patients entered into study: 73%						
	<u>A. Aerobic exercise</u> Supervised/individual daily brisk walking or jogging for 30min/10days at 65-75% of MHR, park outside hospital, 92% individual sessions.	14/ 64	45.3/ 10.0	--- 7.1	--- ---	100 <sup>A</sup>	BDI severe/improved to mild- moderate <sup>§,†</sup>
	<u>B. Stretching exercise</u> Supervised daily stretching 30min/10days on thighs, calves, gluteal, back, shoulders 60secs (60secs break), hospital.	11/ 72	41.0/ 13.2	--- 18	--- ---	100 <sup>A</sup>	severe/ improved <sup>§</sup>
	<u>C. Pharmacotherapy (control group)</u> All patients were treated with antidepressants; 70% on SSRI's, 20% on SSNRI's, 10% on dopamine agonist.	10/ 70	49.1/ 16.5	--- 10.5	--- ---		severe/not improved
Major Inclusion Criteria: BDI score of >28, antidepressant drug therapy initiated < 2 weeks before participation in the trial							

Table 1 continued

Trial, Country, Sample	Interventions	N/ ♀ %	age m/sd	attend. dropouts %	physiolog. gains	concurr. psychiatr. therap. %	depression pre/post
Veale et al., (1992) UK outpatients	Eligible patients entered into study: 71% <u>A. Aerobic Exercise</u> Group/supervised running 3times/week/12 weeks in a public park just outside hospital. Warm-up/stretching before running.	48/ ---	--- ---	--- 25	VO <sub>2max</sub> <sup>§, †</sup>	45 <sup>A</sup> 100 <sup>P</sup>	CIS moderate-severe/ improved <sup>§, †</sup>
	<u>B. Treatment as usual (control group)</u> Supportive psychotherapy.	35/ --	--- ---	--- 17.2	not improved	34 <sup>A</sup>	moderate-severe/ improved <sup>§</sup>
Major Inclusion Criteria: >17 total weighted score and >2 depression severity score on the CIS							
Oertel-Knöchel et al., (2014) Germany inpatients	<u>A. Aerobic exercise</u> Group-based, supervised, for 45min, 3 times/week/4weeks at 60-70%MHR. Warm-up for 10min, 25min cardio training (aerobic exercise, aerobic with boxing exercises and circuit training) and 10min cool-down.	8/ 50	36.6/ 12.9		---	100 <sup>CT</sup>	BDI moderate/ improved to mild moderate <sup>§</sup>
	<u>B. Relaxation</u> Group-based, supervised, for 45min, 3times/week/4weeks. Breathing exercises, “enjoy exercises”, “imaginary journey”, relaxation or acceptance and awareness training. No yoga, no muscle progressive relaxation.	6/ 66	41.3/ 15.6	drop outs: 32% across all groups	---	100 <sup>CT</sup>	moderate/ improved <sup>§</sup>
	<u>C. Waiting (control)</u> No intervention.	8/ 38	42.2 8.3		---	---	moderate/ not improved <sup>§</sup>
Major Inclusion Criteria: stable medication 1 month before and during the trial, disease duration at least 5years							



Table 1 continued

Trial, Country, Sample	Interventions	N/ ♀ %	age m/sd	attend. dropouts %	physiolog. gains	concurr. psychiatr. therap. %	depression pre/post
Kerling et al., (2015)  Germany  inpatients	<u>A. Aerobic exercise</u> Group-based, supervised by study nurses, for 51min, 3times/week/6 weeks at moderate intensity and at 13max at the Borg scale. Warm up for 6min, 25min on a bicycle ergometer, and for 20min on arm ergometer, cross trainer, stepper, treadmill, and recumbent or rowing ergometer at personal preference.	22/ 45	44.2/ 8.5	>90 0	RHR <sup>§</sup> VO <sub>2peak</sub> <sup>§</sup> LMax <sup>§</sup> VAT <sup>§</sup>	77 <sup>A</sup> 100 <sup>CBT</sup>	MADRS moderate-severe/ improved to mild- moderate <sup>§</sup>
	<u>B. Treatment as usual (control group)</u> Antidepressant drugs and CBT were prescribed to 75% and 100% of the patients, respectively. As part of their routine treatment, all patients attended a daily supervised-based physical activity program of ball games, walking, and stretching at moderate intensity for 20min.	20/ 30	40.9/ 11.9	--- 0	not improved	100 <sup>PA</sup>	moderate-severe/ improved to mild- moderate <sup>§</sup>
Major Inclusion Criteria: no acute/chronic infectious disease, no acute/lifetime immunological disease							

A: Antidepressants, BDI: Beck Depression Inventory, C: Counseling, CBT: Cognitive behavioral therapy, CIS: Clinical Interview Schedule, CT: Cognitive training, ECT: Electroconvulsive therapy, HAMD-17: Hamilton Rating Scale Depression, LMax: Maximum lactate concentration, MADRS: Montgomery-Åsberg Depression Rating Scale, Max: Maximum, M: Mean, METs: Metabolic Equivalents, MHR: Maximum heart rate, MIC: Major inclusion criteria, OT: Occupational therapy, P: Psychotherapy, PA: Physical activity, RHR: Resting heart rate, SD: Standard deviation, SNRI: Serotonin-norepinephrine reuptake inhibitor, SSRI: Selective serotonin reuptake inhibitor, VO<sub>2peak</sub>: Peak oxygen uptake, VAT: Ventilatory anaerobic threshold, §: Statistically significant difference within group, †: Statistically significant difference in comparison to control group.

Table 2. Consensus scores of design quality for reviewed trials

PEDro Criteria	Random Allocation	Concealed Allocation	Baseline Balance	Blinding Patient/Therapist/Assessor	Dropout (<15%)	ITT	Statistical Comparison Between Groups	Point and Variability Measures	PEDro Total Score
Trials									
Schuch et al. (2015)	1	1	1	0/0/1	1	1	1	1	8
Kerling et al. (2015)	1	1	1	0/0/1	1	1	1	1	8
Legrand and Neff (2016)	1	1	1	0/0/0	1	1	1	1	7
Salehi et al. (2016)	1	1	1	0/0/1	1	1	1	1	7
Pilu et al. (2007)	1	0	1	0/0/0	1	1	1	1	6
Mota-Pereira et al. (2011)	1	1	0	0/0/1	1	0	1	1	6
Oertel-Knöchel et al. (2014)	1	0	1	0/0/1	0	1	1	1	6
Martinsen et al. (1985)	1	0	1	0/0/0	1	1	1	0	5
Sadeghi et al. (2016)	1	0	1	0/0/1	0	0	1	1	5
Veale et al. (1992-a)	1	0	1	0/0/0	0	0	1	1	4
Rueter (1980)	1	0	1	0/0/0	0	0	1	1	4

PEDro: Physiotherapy Evidence Database scale; ITT: Intention to Treat

Table 3. Meta-analytic findings of the effect of aerobic exercise on depression; overall effect and sensitivity analyses

	Trials/Arms	Treatment Effectiveness			Publication Bias		Heterogeneity	
		g	CI 95%	p value	Egger intercept	Begg-Mazumbar Kendall's tau	Cochrane Q	I <sup>2</sup>
Overall effect	11/13	-0.79	-1.00, -0.57	0.00	-2.48, p=0.12	-0.22, p=0.29	15.20, p=0.23	21%
PEDro score of $\geq 6$ <sup>1,2,4-6,9,10</sup>	7/8	-0.70	-0.94, -0.45	0.00	-1.87, p=0.42	-0.03, p=0.90	7.16, p=0.41	2%
Up to 4 weeks <sup>2,5,9,10</sup>	4/5	-0.71	-1.09, -0.34	0.00	-1.18, p=0.74	-0.00, p=1.00	5.79, p=0.22	30%
Exercise preferences <sup>1,3,6,10</sup>	4/4	-0.84	-1.17, -0.51	0.00	-3.73, p=0.52	-0.17, p=0.73	3.23, p=0.36	7%

CI 95%: Confidence Intervals; g: Hedge's g; PEDro: Physiotherapy of Evidence Database Scale.

<sup>1</sup>Kerling et al. 2015; <sup>2</sup>Legrand and Neff, 2016; <sup>3</sup>Martinsen et al. 1985; <sup>4</sup>Mota-Pereira et al. 2011; <sup>5</sup>Oertel-Knöchel et al. 2014; <sup>6</sup>Pilu et al. 2007; <sup>9</sup>Salehi et al. 2016; <sup>10</sup>Schuch et al. 2015.

Table 4. Meta-analytic findings of the effects of aerobic exercise on depression; subgroup analyses

	Trials/Arms	Treatment Effectiveness			Publication Bias		Heterogeneity	
		g	CI 95%	p value	Egger intercept	Begg-Mazumbar Kendall's tau	Cochrane Q	I <sup>2</sup>
<b>Participants</b>								
Outpatients <sup>4,6,8,11</sup>	5/6	-0.84	-1.16, -0.51	0.00	-3.14, p=0.13	-0.53, p=0.13	6.12, p=0.29	18%
Inpatients <sup>1-3,5,9,10</sup>	6/7	-0.75	-1.06, -0.44	0.00	-1.36, p=0.67	-0.00, p=1.00	8.89, p=0.18	32%
Mild-moderate/moderate <sup>3,5,7,8</sup>	4/5	-0.97	-1.43, -0.51	0.00	-2.58, p=0.48	-0.10, p=0.81	6.79, p=0.15	41%
Moderate-severe/severe <sup>1,2,4,6,9-11</sup>	7/8	-0.71	-0.94, -0.48	0.00	-1.92, p=0.42	-0.18, p=0.54	7.16, p=0.41	2%
<b>Intervention</b>								
Equipment-based <sup>1,5,6,9,10</sup>	5/6	-0.67	-0.98, -0.35	0.00	-1.59, p=0.63	-0.00, p=1.00	6.59, p=0.25	24%
Equipment-free <sup>2,3,7,8,11</sup>	5/6	-0.94	-1.28, -0.60	0.00	-3.00, p=0.17	-0.40, p=0.26	6.96, p=0.22	28%
Group exercise <sup>1,3,5,6,11</sup>	5/5	-0.80	-1.09, -0.51	0.00	-0.62, p=0.80	-0.00, p=1.00	3.48, p=0.48	0%
Individual exercise <sup>2,4,7,9,10</sup>	5/6	-0.87	-1.30, -0.43	0.00	-4.39, p=0.14	-0.40, p=0.26	10.78, p=0.06	53%
Indoors <sup>1,4,7,9,10</sup>	7/8	-0.77	-1.10, -0.44	0.00	-3.54, p=0.13	-0.25, p=0.39	12.05, p=0.09	41%
Outdoors <sup>2,3,11</sup>	3/3	-0.94	-1.30, -0.58	0.00	-1.95, p=0.59	-0.00, p=1.00	1.37, p=0.50	0%
Hospital <sup>1,5,9,10</sup>	4/5	-0.61	-0.96, -0.27	0.00	-0.64, p=0.88	-0.00, p=1.00	5.62, p=0.23	28%
Non-hospital <sup>2,3,6,7,11</sup>	5/5	-1.07	-1.41, -0.72	0.00	-3.08, p=0.09	-0.30, p=0.46	4.65, p=0.33	14%
<b>Comparisons</b>								
Antidepressants or TAU <sup>1,2,4,6,10,11</sup>	6/6	-0.75	-1.01, -0.48	0.00	-1.38, p=0.35	-0.27, p=0.45	1.87, p=0.87	0%
Psychological treatments <sup>1,3,7,8,11</sup>	5/6	-0.85	-1.21, -0.48	0.00	-3.69, p=0.16	-0.40, p=0.26	8.64, p=0.12	42%
<b>Outcomes</b>								
Self-rated <sup>2,3,5,7,8</sup>	5/6	-0.97	-1.35, -0.59	0.00	-2.50, p=0.41	-0.13, p=0.71	6.81, p=0.24	26%
Clinician-rated <sup>1,4,6,9-11</sup>	6/7	-0.69	-0.94, -0.44	0.00	-1.56, p=0.62	-0.09, p=0.76	6.65, p=0.35	9%

CI 95%: Confidence Intervals; g: Hedge's g; TAU: Treatment as usual

<sup>1</sup>Kerling et al. 2015; <sup>2</sup>Legrand and Neff, 2016; <sup>3</sup>Martinsen et al. 1985; <sup>4</sup>Mota-Pereira et al. 2011; <sup>5</sup>Oertel-Knöchel et al. 2014; <sup>6</sup>Pilu et al. 2007; <sup>7</sup>Rueter, 1980; <sup>8</sup>Sadeghi et al. 2016; <sup>9</sup>Salehi et al. 2016; <sup>10</sup>Schuch et al. 2015; <sup>11</sup>Veale et al. 1992.

Figure 1. Preferred Reporting Items for Systematic Reviews and Meta-Analyses (PRISMA) flow diagram.

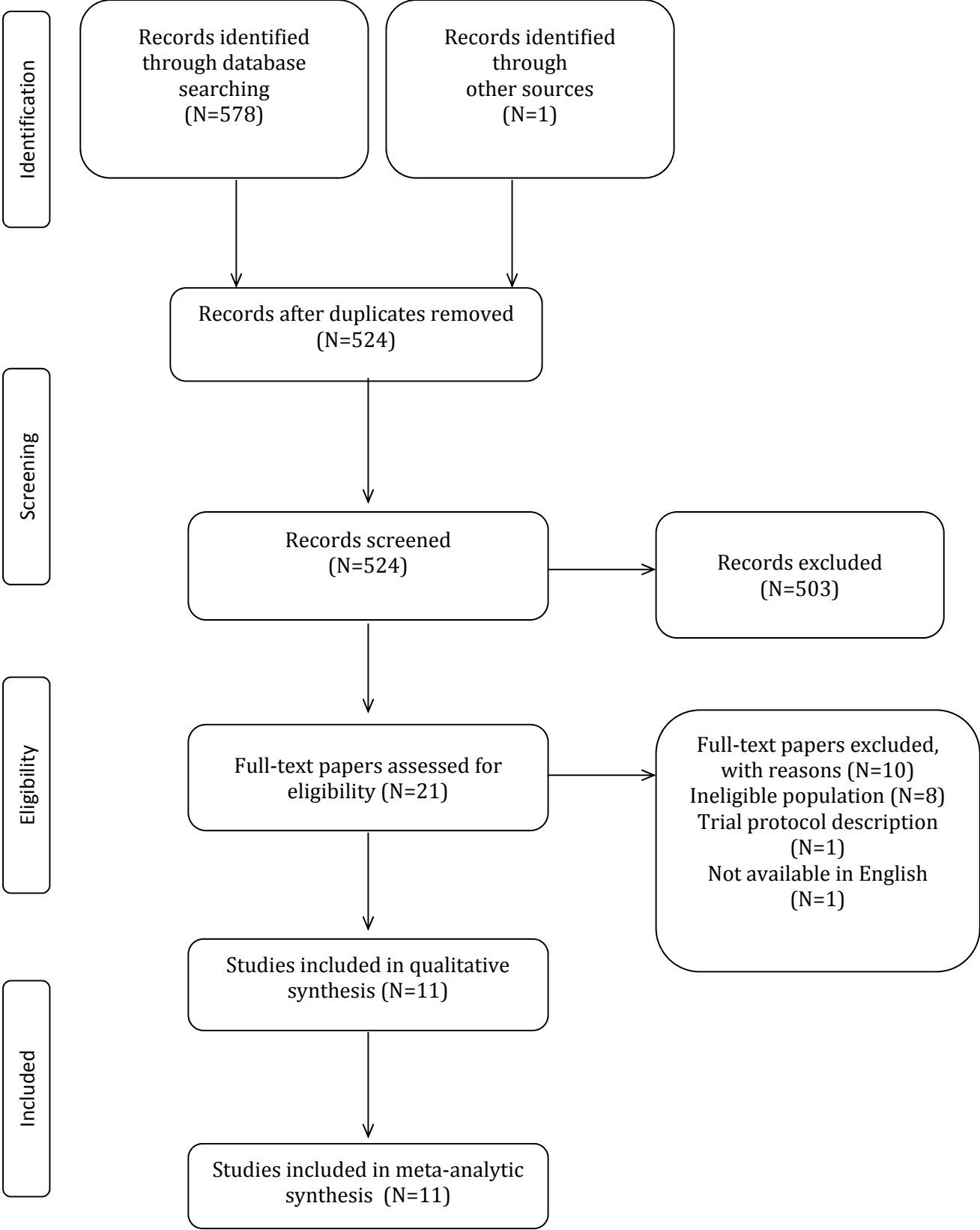


Figure 2. Meta-analysis of depressive symptom score.

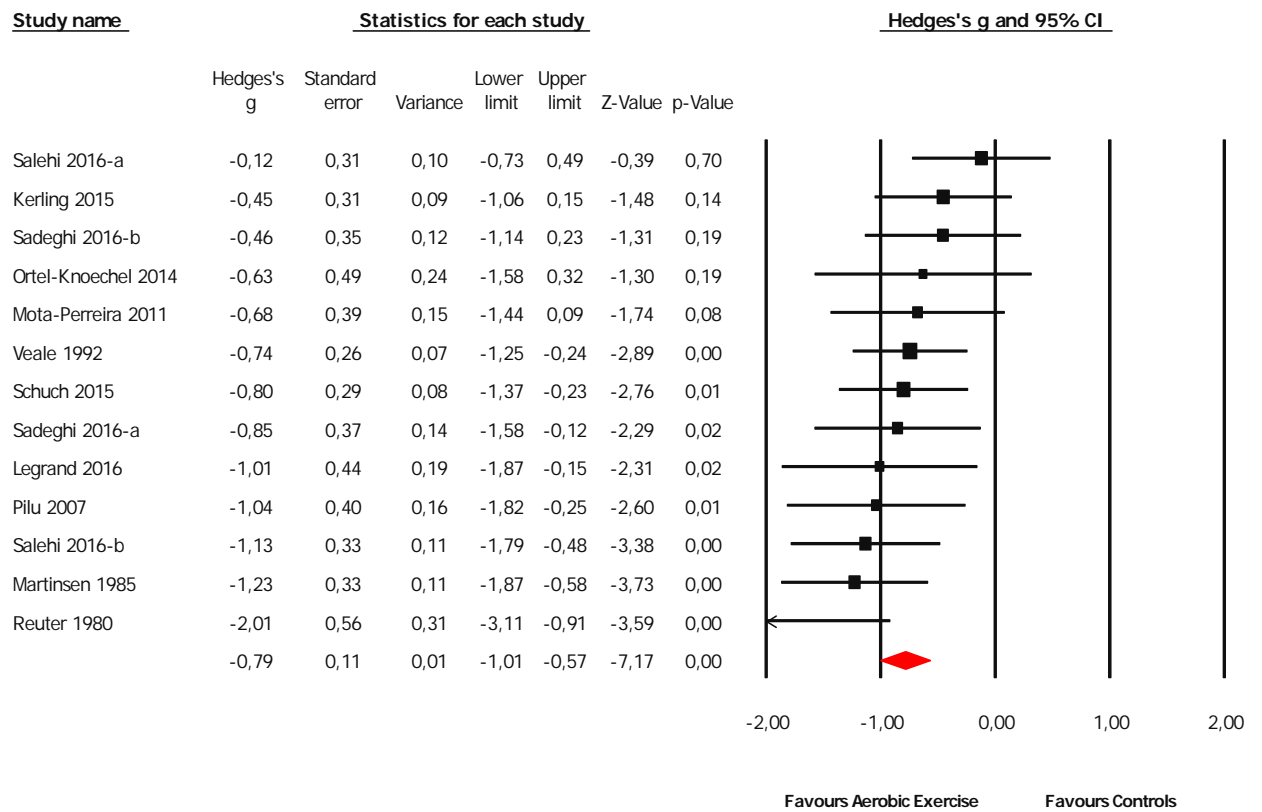


Figure 3. Funnel Plot.

