



**HAL**  
open science

# Ambient seismic noise imaging of the lowermost mantle beneath the North Atlantic Ocean

Lise Retailleau, Pierre Boué, Lei Li, Michel Campillo

## ► To cite this version:

Lise Retailleau, Pierre Boué, Lei Li, Michel Campillo. Ambient seismic noise imaging of the lowermost mantle beneath the North Atlantic Ocean. *Geophysical Journal International*, Oxford University Press (OUP), 2020, 222 (2), pp.1339-1351. 10.1093/gji/ggaa210 . insu-02879285

**HAL Id: insu-02879285**

**<https://hal-insu.archives-ouvertes.fr/insu-02879285>**

Submitted on 23 Jun 2020

**HAL** is a multi-disciplinary open access archive for the deposit and dissemination of scientific research documents, whether they are published or not. The documents may come from teaching and research institutions in France or abroad, or from public or private research centers.

L'archive ouverte pluridisciplinaire **HAL**, est destinée au dépôt et à la diffusion de documents scientifiques de niveau recherche, publiés ou non, émanant des établissements d'enseignement et de recherche français ou étrangers, des laboratoires publics ou privés.

# Ambient seismic noise imaging of the lowermost mantle beneath the North Atlantic Ocean

Lise Retailleau<sup>1,2</sup>, Pierre Boué<sup>3</sup>, Lei Li<sup>3</sup> and Michel Campillo<sup>3</sup>

<sup>1</sup>*Department of Geophysics, Stanford University, Stanford, California, USA. E-mail: [retailleau.lise@gmail.com](mailto:retailleau.lise@gmail.com)*

<sup>2</sup>*Now at Observatoire Volcanologique du Piton de la Fournaise, Institut de Physique du Globe de Paris, CNRS, UMR 7154-Sismologie, La Plaine des Cafres, La Réunion, France*

<sup>3</sup>*Université Grenoble Alpes, Univ. Savoie Mont Blanc, CNRS, IRD, IFSTTAR, ISTerre, 38000 Grenoble, France*

Accepted 2020 April 30. Received 2020 April 2; in original form 2019 October 3

## SUMMARY

Body waves can be extracted from correlation functions computed from seismic records even at teleseismic distances. Here we use *P* and PcP waves from the secondary microseism frequency band that are propagating between Europe and the Eastern United States to image the core–mantle boundary (CMB) and *D*'' structure beneath the North Atlantic. This study presents the first 3-D image of the lower mantle obtained from ocean-generated microseism data. Robustness of our results is evaluated by comparing images produced by propagation in both directions. Our observations reveal complex patterns of lateral and vertical variations of *P*-wave reflectivity with a particularly strong anomaly extending upward in the lower mantle up to 2600 km deep. We compare these results with synthetic data and associate this anomaly to a *V<sub>p</sub>* velocity increase above the CMB. Our image aims at promoting the study of the lower mantle with microseism noise excitations.

**Key words:** Composition and structure of the mantle; Atlantic Ocean; Time-series analysis; Body waves; Seismic noise.

## 1 INTRODUCTION

Constraining the chemical, thermal and mechanical processes that occur in the deep mantle is critical to better understand the Earth's past and future dynamics. One of the Earth's major discontinuities, the core–mantle boundary (CMB) is conventionally located at 2981 km depth. It marks the limit between the turbulent flow of liquid molten iron alloy in the outer core and the viscous silicate rocks of the lower mantle. It is also, with the Earth's surface, the region that shows the most contrasts in density, viscosity and elastic wave properties. The lowermost mantle, usually defined as the region between the CMB and 200–300 km above it and designated as the *D*'' layer (Bullen 1949), is known to be a complex and discontinuous shell that plays a significant role in fundamental geodynamic processes such as mantle convection (Lay 2007) and dynamo effect operating in the outer-core (Glatzmaier *et al.* 1999). The *D*'' layer is generally associated with a thermal boundary layer produced by heat fluxing from the much hotter core to the colder lower mantle. A simple thermal discontinuity is not the only candidate that could lead to a seismic wave reflection/diffraction and multiple factors and combinations of factors were rapidly proposed in the literature to explain seismic observations such as a presence of sinking slab debris or thermochemical layering (Boyet & Carlson 2005; Hernlund & McNamara 2015). The presence of subducted material in the deep mantle as a possible origin for plumes and hotspots has

been debated for several years (Workman & Hart 2005). In contrast, laboratory and computational mineral physics experiments demonstrated the existence of a phase transition from perovskite to a denser post-perovskite at pressure and temperature close to lower mantle conditions (see Cobden *et al.* 2015, for a review). But even if this strong mineral physics argument seems compatible with most seismic observations, the consensus is moving towards a multifactor explanation. Consequently, multidisciplinary analyses have been carried out for the past decades to obtain reasonable structural and geodynamic models of the deep mantle and outermost core. To construct a realistic picture, one should use all available inputs from each of these fields to deal with inherent tradeoffs and/or uncertainties of each method.

Seismology plays a major role by bringing direct measurements of elastic properties of the Earth structure with depth. Numerous global tomographic inversions have defined the large-scale structures of the lowermost mantle using various seismic data sets: body wave arrival times, normal modes and/or surface wave dispersion (e.g. Mégnin & Romanowicz 2000; Panning & Romanowicz 2006; Houser *et al.* 2008; Kustowski *et al.* 2008; Simmons *et al.* 2009; Ritsema *et al.* 2011; Lekic *et al.* 2012; Moulik & Ekström 2014; French & Romanowicz 2015; Durand *et al.* 2016; Garnero *et al.* 2016; Koelemeijer *et al.* 2016; Durand *et al.* 2017). These studies have highlighted the presence of two Large Low Shear Velocity Provinces (LLSVPs) beneath Africa and the Pacific. Given the input

data and the inversion methods, these tomographic models are usually depicting smooth deep Earth structures. The lack of resolution within the lower mantle (generally  $> 1000$  km) prevents consensual conclusions on the fine structures and more importantly on physicochemical processes. Seismic velocities are obviously important attributes for identifying the physical nature of heterogeneities, but velocity contrasts alone are really informative only if the spatial geometry of these heterogeneities is properly constrained across scales. Tomographic images are too smooth to reveal sharp details and other constraints are needed. For instance, better azimuthal coverage of the illumination of the deep mantle (together with a denser ray coverage) helps to measure the anisotropy and better constrain mineralogical structure at depth (Cobden *et al.* 2015). Observations and modelling of various specific seismic phases in local regions of the globe have been critical to identifying smaller-scale heterogeneities such as Ultra Low Velocity Zones (ULVZ, Williams & Garnero 1996) and small-scale ( $< 10$  km) scatterers (e.g. Rost & Earle 2010). Using high frequency scattered/reflected  $P$  and  $S$  waves is one of the best ways to detect and probe these heterogeneities (e.g. Earle & Shearer 1997). The top of the  $D''$  discontinuity has been extensively studied in various places around the globe (e.g. Lay & Helmberger 1983; Thomas *et al.* 2004a, b; Gassner *et al.* 2015). Overviews on the lower mantle and  $D''$  can be found in Wysession *et al.* (1998), Garnero (2000), Lay & Garnero (2011) and Lay (2015).

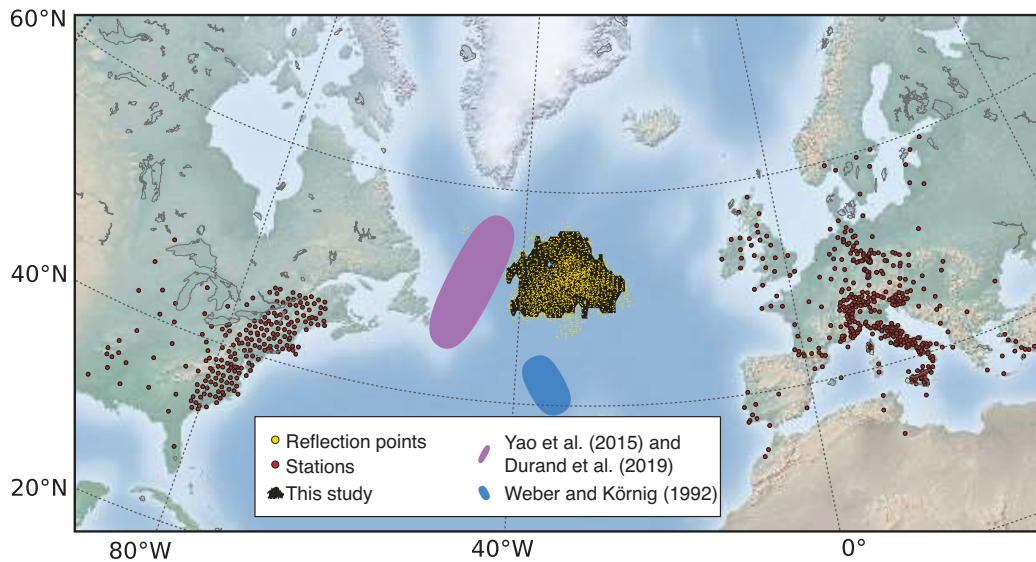
Deep-Earth seismology surveys rely on moderate to large earthquakes to generate impulsive and sufficiently energetic seismic waves that can interact with the fine structure of the Earth and finally reach a sensor at the Earth's surface. Seismologists use various types of wave travel-paths to optimize the Earth coverage, but the regions probed by these waves are ultimately controlled and limited by the earthquake distribution. However, we note the significant effort and constant improvement made to exploit the signals from the earthquakes as fully as possible. For instance, Lai *et al.* (2019) developed a method to build high-quality traveltimes data set including multiply reflected waves such as SSS and ScSScS waves. If we look carefully at previous studies made in our region of interest, which is beneath the North Atlantic, the lower mantle was probed by few studies using earthquakes mostly distributed in South and Central America. Closer to our study, Yao *et al.* (2015) observed clear  $S$  wave reflected waves (SdS) related to  $D''$  under the North Atlantic Ocean from a single earthquake in the South of Spain and measured on an array of sensors in the USA (transportable USArray). They concluded the existence of a  $\sim 300$  km thick  $D''$  with a positive velocity jump ranging from 2 to 4 per cent, matching previous studies in neighboring regions. Durand *et al.* (2019) recently extended that study by detecting both SdS and PdP reflections. This latest article also concluded that the  $D''$  layer region beneath the North Atlantic Ocean shows a strong positive velocity jump (ranging from 2.7 to 3.8 per cent) at 300 km above the CMB with significant lateral variations. A recent review of previous studies in this region can be found in Li *et al.* (2019). This kind of studies would benefit significantly from an increase in the number of reflection points at the CMB and above, with a broader offset and azimuthal coverage, which would help constrain the 3-D geometry of the observed discontinuity.

In this study, we focus on specific types of seismological data that are retrieved from ambient seismic noise. At period band longer than 1 s the ambient seismic noise is linked mostly to the interactions between the ocean and the solid Earth (Longuet-Higgins 1950; Hasselmann 1963). The strongest energy, in the 3 to 10 s period band, is called secondary microseism (Kedar *et al.* 2008; Arduin *et al.* 2011; Hillers *et al.* 2012; Stutzmann *et al.* 2012). It is generated

by the non-linear interaction between oceanic waves travelling at the same period with opposite directions. This interaction occurs either within a storm, between two storms, or when ocean waves generated by a storm propagate to a coast and are reflected back in the direction of the storm. The resulting standing wave generates a pressure field at the bottom of the ocean that is converted to seismic waves.

The permanent weak and complex wavefield resulting from these oceanic sources can be turned to useful deterministic signals using the correlation operator (seismic interferometry). Noise-based seismic methods constitute a valuable supplement to earthquake data since they are mostly constrained by the sensor locations (Shapiro & Campillo 2004; Sabra *et al.* 2005; Shapiro *et al.* 2005). Their application was first limited to the uppermost layers of the Earth, as surface waves dominate the extracted signals. However, it was demonstrated that crustal body-wave reflections (Zhan *et al.* 2010; Ruigrok *et al.* 2011; Poli *et al.* 2012a) can be extracted from ambient noise correlations. Poli *et al.* (2012b) then made a first observation of the upper mantle discontinuities (at 410 and 660 km of depth) using a similar method across a cratonic region. Following these observations, different studies generalized the methodology to teleseismic phase detections (Lin *et al.* 2013; Nishida 2013b; Boué *et al.*, 2013, 2014a). In these studies, it was shown that the retrieved seismic phases carried structural information of the deep Earth. Poli *et al.* (2015) successfully identified a  $D''$  reflector at 2530 km depth by extracting a PdP phase on correlation functions computed between Finland and Japan. While the signal-to-noise ratio (SNR) recovered from correlation of ambient noise is lower, it benefits from array processing on both the source and receiver side (as will be developed here). This new class of signals has been proven to be a good supplement to earthquake data for deeper and deeper targets. In parallel, studies have extracted body wave sources of seismic signals linked to oceanic activity in the ambient noise (Gerstoft *et al.* 2008; Landès *et al.* 2010; Zhang *et al.* 2010; Retailleau & Gualtieri 2019; Li *et al.* 2020). These studies lead the way to a better understanding of the body waves observed by correlation methods and thus to their better use for imaging. Other studies are developing processes to invert ambient noise correlations for the structure and the sources simultaneously (Fichtner *et al.* 2016; Sager *et al.* 2018). Alongside the development of body wave retrievals from ocean and solid Earth interactions (Boué *et al.* 2013; Nishida 2013), different studies point out the possibility to use longer period body waves retrieved from large earthquake late coda arrivals (e.g. Boué *et al.* 2014a; Huang *et al.* 2015; Phạm *et al.* 2018; Wu *et al.* 2018). This particular method usually shows a richer wavefield with very good SNR as compared to a noise-based approach, but one should be careful because the correlation does not necessarily converge toward the natural Earth impulse response (Poli *et al.* 2017; Kennett & Pham 2018). As compared with noise-based correlations derived from a ballistic wavefield emanating from Ocean waves, signals retrieved from coda waves between station pairs are less straightforward to exploit to image 3-D heterogeneities of the Earth. Nonetheless, coda wave correlations have proven to be very efficient to extract the weak signature of velocity deviation from 1-D reference models for the deepest part of the Earth (Tkalčić and Phạm 2018). Wang & Tkalčić (2020) tend to demonstrate, with very promising synthetic examples, that this type of signals could also be used to resolve 3-D structures of the inner core.

In this paper, we produce an original  $1250$  km  $\times$   $950$  km aperture (at the CMB  $680$  km  $\times$   $520$  km) image of the deep mantle beneath the North Atlantic Ocean using  $P$  and PcP body waves extracted from correlations of the secondary microseim computed from about



**Figure 1.** The red dots represent the  $\sim 900$  stations in the United States and Europe used for the study. The yellow dots represent the considered reflection points at the CMB and the black patch corresponds to the area covered by our final images. The closest previous studies are represented in blue (Weber & Körnig 1992) and purple (Yao *et al.* 2015 and Durand *et al.* 2019).

900 stations in the United States (US) and Europe (Fig. 1). This area is located North of the region studied by Weber & Körnig (1992) and East of the previously mentioned studies by Yao *et al.* (2015) and Durand *et al.* (2019). These two study areas are represented in Fig. 1. We first show that  $P$  and PcP phases are observed on both the causal and anticausal part of the correlation functions in the secondary microseism period band (3–8 s) after stacking a 1-yr data set. Following this, we use this very large correlation data set (about 100 000 paths, i.e. turning points at depth) to constrain regional reflectivity variations in the few hundreds of kilometres around the CMB using a double-array analysis.

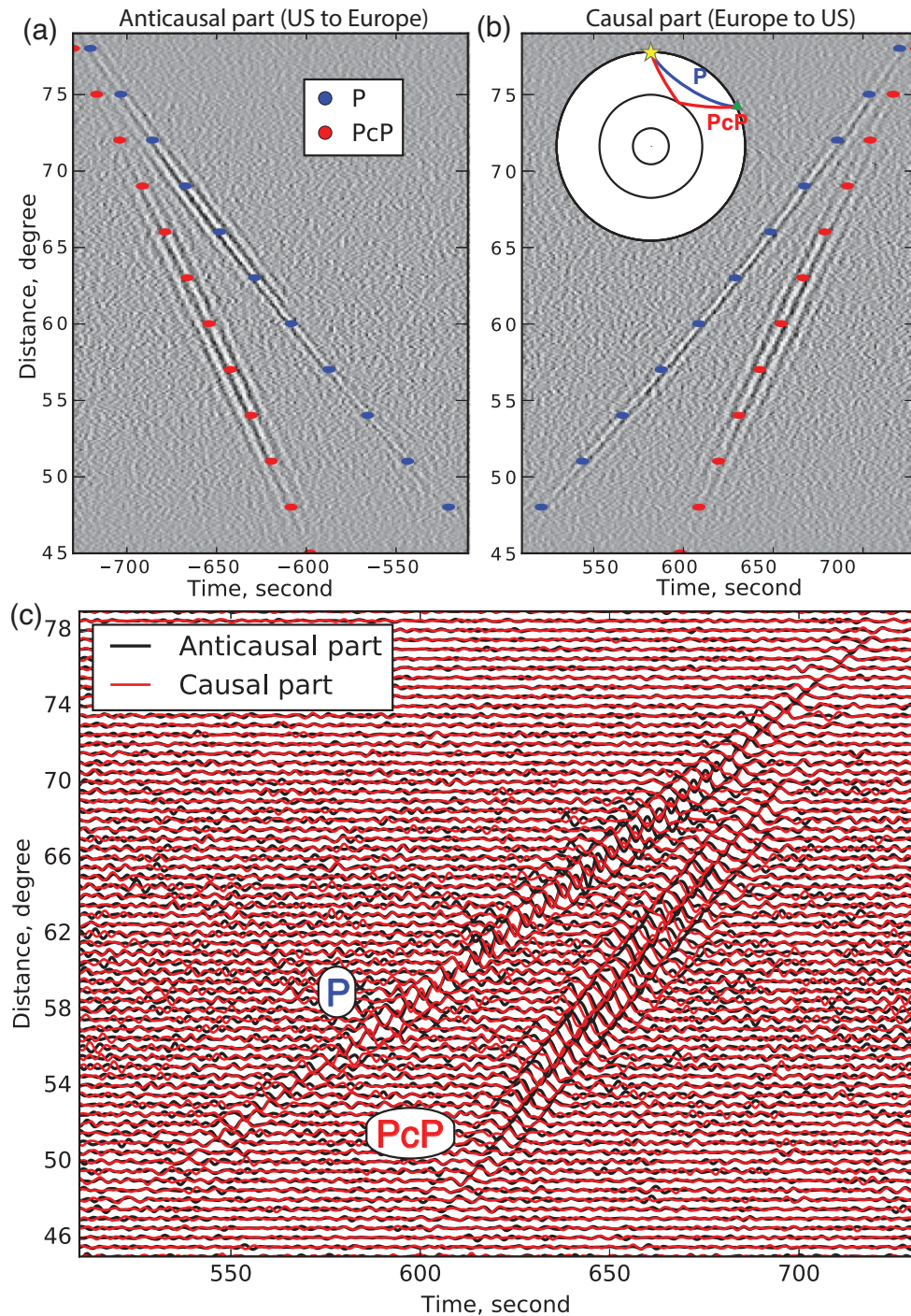
## 2 RETRIEVING $P$ -WAVE ARRIVALS FROM NOISE CORRELATIONS

Our data set consists of 1 yr (2014) of continuous seismic signals recorded by the vertical component of roughly 900 broadband stations in Europe and the United States (Fig. 1). The daily time series were downloaded from the Incorporated Research Institutions for Seismology (IRIS, <http://www.iris.edu/mda>) and European Integrated Data Archive (EIDA, <http://www.orfeus-eu.org/eida/eida.html>) data services. Details about the downloading and networks can be found in the Supplementary Materials S1 and Retailleau *et al.* (2017).

The correlation functions are computed between each station in the United States and each station in Europe, provided the stations were operating simultaneously for at least 100 d. The correlations are evaluated on 4-hr segments, frequency normalized, for all segments that do not contain strong earthquake signals. All correlations for a given station pair are then stacked over the entire year to optimize the convergence of the correlation function toward the Earth impulse response. The resulting correlation functions are filtered between 3 and 8 s of period, that is in the secondary microseism period band. Figs 2(a) and (b) show all these correlations as a function of interstation distance and lag-time (the number of correlations stacked at all distances can be found in Fig. S2). The two panels correspond to waves travelling from the United States to Europe

(Fig. 2a, anticausal part of the correlations) and the opposite direction (Fig. 2b, causal part). Teleseismic  $P$  and PcP arrivals are clearly visible for both directions and agree very well with the arrivals predicted using the TauP toolkit (Crotwell *et al.* 1999) using the IASP91 model (Kennett & Engdahl 1991). No significant other arrivals are visible on Figs 2(a) and (b) leading to two options for a potential  $D''$  discontinuity: (1) No such discontinuity exists in this area or (2) the 3-D structure is sufficiently complex to stack destructively in these averaged sections. Previous studies support the second option.

A significant point is the apparent symmetry of the correlations, at least on average, observed for this  $P$ -wave propagation. We represent both the causal and the anticausal parts of the correlations in Fig. 2(c) for a direct observation. While a good symmetry of the correlations is not necessary, it is a meaningful argument to support the sufficient convergence of the correlation towards the Green function in this frequency band. In other words, a similar bias that would be observed in both directions is very unlikely. Fig. 3 shows the PcP source regions (Fresnel or stationary zones, e.g. Snieder 2004) that match the stationary phase condition for the interference between PcPPcP and PcP at 7 s of period. The two Fresnel zones correspond to the two propagation directions between a station in the United States and a station in Europe. These two source areas are clearly distinct and it can therefore be said that anticausal and causal signals do not share the same microseism origin. We can also note that both areas are large compared to our study area. This implies that different locations in our study area are illuminated by very similar source areas (for causal and anticausal signals, respectively), making it possible to confidently interpret relative variations of amplitude in our results. This phase combination (PcPPcP and PcP) is one of the possibilities to extract the PcP phase. For instance, a combination between a PKPPcP and a PKP phase is another possibility. Isolated energetic noise sources do not seem to play an important role over the entire year; no spurious phase is visible on this average section near the  $P$ -wave arrival (Li *et al.* 2020). We speculate that noise sources are sufficiently well distributed during the year and that scattering is strong enough at this period band to randomize the wavefield leading to relatively unbiased correlation



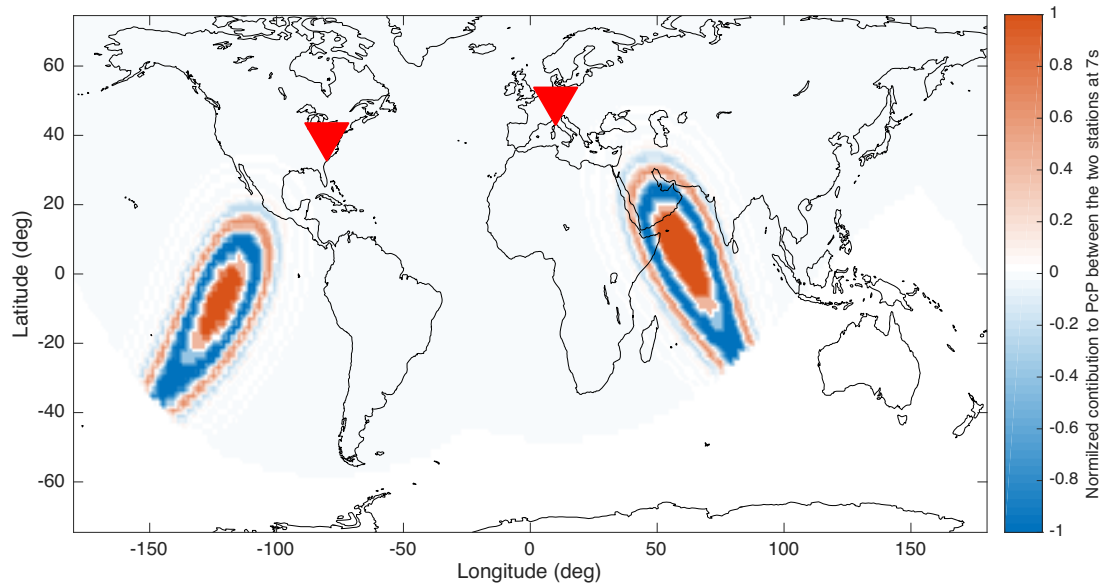
**Figure 2.** (a) Anticausal and (b) causal part of the correlation functions computed between United States and European stations in the arrival time window of the  $P$  waves. Signals are filtered from 3 to 8 s. The correlations are stacked in  $0.1^\circ$  distance bins. The blue and red dots represent  $P$  and PcP theoretical arrival times. (c) Direct comparison of the causal and anticausal part of the correlations stacked in  $0.5^\circ$  distance bins.

functions. While this result is very promising we still choose to be careful with our interpretations and prioritize robustness.

### 3 MAPPING THE REFLECTIVITY OF THE LOWERMOST MANTLE

Figs 2(a) and (b) show spatially averaged signals meaning that sharp lateral variations naturally cancel out over the whole region. However, our data set is sufficiently large to extract regional variations

of reflectivity in the area highlighted by yellow dots in Fig. 1. Our objective is to map the contribution of arrivals precursory to the PcP and thus potential reflection above the CMB. We describe here the main steps of the method; more details can be found in Supplementary Material S1. To verify that our workflow does not include any bias and correct from the amplitude variations with geometrical and propagation effects, we apply the same process to synthetics computed in the 1-D ak135 model with attenuation (ak135 of Kennett *et al.* 1995; synthetics from IRIS DMC 2015; van Driel *et al.* 2015;



**Figure 3.** PcP phase source regions (Fresnel zones) that match the stationary phase condition for the interference between PcPPcP and PcP at 7 s of period. The two lobes correspond to the source regions for both propagation directions. The two red triangles represent the two arrays used in this study.

Krischer *et al.* 2017). We generate the signals from a vertical force source located at each station location in Europe and recorded at all the U.S. stations. We thus reproduce the propagation estimated by the correlation process applied on the real data. Because our correlations signals are fairly symmetric, we stack them to produce a single image, but the following workflow is also applied on both the causal and anticausal parts of the correlations to get independent images. As compared to earthquake-based signals, a noise correlation technique that turns any seismic station into a virtual source allows the use of array processing on both the (virtual-) source and receiver side. This is particularly important to overcome low SNR of single station-to-station detections. At that scale, and with similar targets, this so-called double-beam analysis was first applied using nuclear explosion test sites as the source array (Krüger *et al.* 1993; Scherbaum *et al.* 1997), and then it proved its usefulness in the noise-imaging framework (Boué *et al.* 2014b).

Our workflow, applied on the data and on the synthetics, can be decomposed as follows (a detailed diagram is available in Fig. S1):

(1) Constitution of subarrays in both the United States and Europe by selecting, on each point of a grid of spacing  $110 \text{ km} \times 140 \text{ km}$ , all stations within a 150 km radius. Subarrays are then paired with all subarrays from the other continent. The corresponding reflection points below the Atlantic Ocean are represented with yellow dots in Fig. 1.

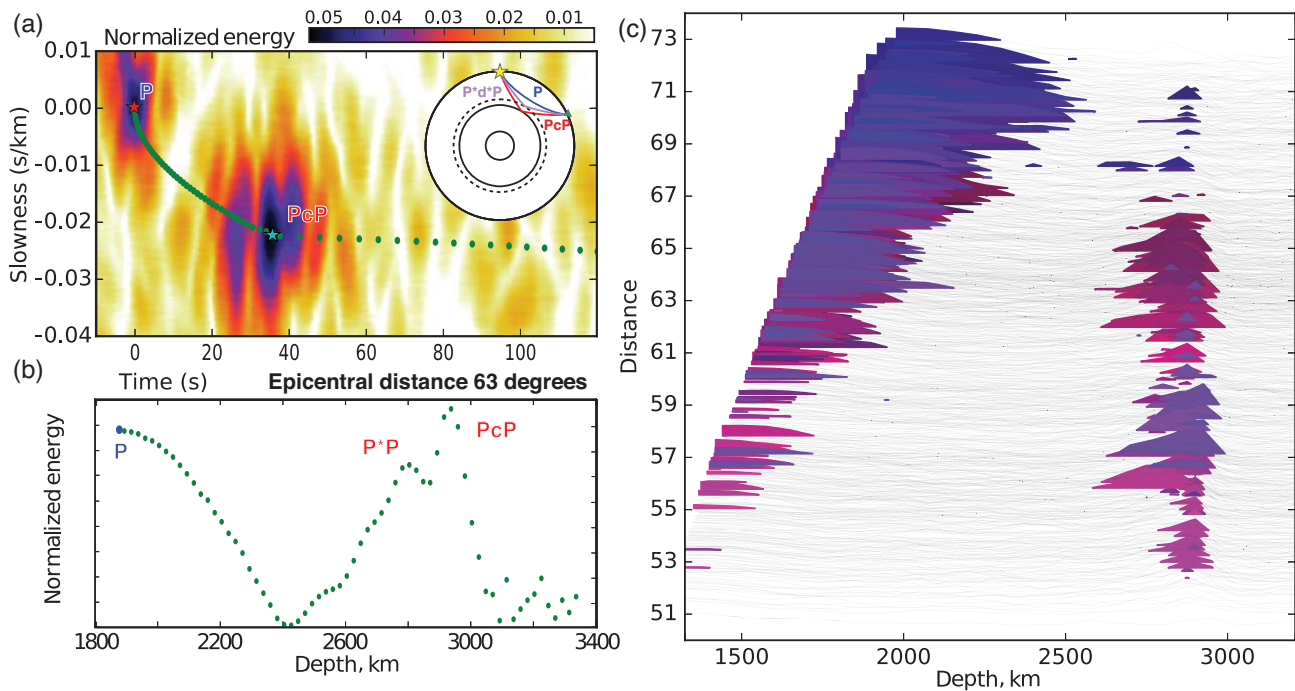
(2) Computation of double-beam transforms (time-slowness analysis, Rost & Thomas 2002; Boué *et al.* 2014b) using each combination of sub-arrays provided they contain at least 200 pairs of stations (i.e. correlation functions). Fig. 4(a) shows a vespagram (time-slowness representation) obtained for a single combination of subarrays. For sake of simplicity, we here consider that the slowness is the same at both subarrays for a given phase.

(3) Construction of time and slowness values pairs of potential reflection points below the lowest point of the  $P$ -direct wave are computed using the TauPtoolkit (Crotwell *et al.* 1999) for a propagation in a 1-D model ak135 (Kennett & Engdahl 1991). These hypothetical reflection points, each corresponding to a given depth, are represented on top of the vespagram in Fig. 4(a) as green dots.

The amplitude of the beam is extracted at each depth as shown in Fig. 4(b). We name  $R_z$  this depth dependent reflectivity function derived from our beamforming analysis. This figure shows the PcP phase at the correct depth ( $\sim 2890 \text{ km}$ , corresponding to the CMB) along with a precursory arrival labelled as P\*P. We name  $I_z$  the function of depth  $z$  obtained through the same process using synthetic waveforms computed in ak135. The generalization of this analysis to all subarray combinations (each of which consists of at least 200 stations) is presented in Fig. 4(c). Each  $R_z$  reflectivity function, extracted from each array pair, is represented as a function of the interarray distance along the great circle. The first signal, at the beginning of each curve, corresponds to the  $P$  arrival. The associated depth varies with the turning point of the phase, thus with the interarray distance.

The second signal, at about 2890 km depth, corresponds to the detection of the CMB. This signal is obtained with most subarray combinations. This first-order observation confirms that we can extract large-scale structural information even using a subset of correlation signals. Fig. 4(c) also reveals that this signal is not depicting a laterally homogeneous interface; indeed very little signal is observable at the CMB at some distances, and some precursory reflected phases appear at about 2600 km. Absolute amplitudes are difficult to assess using correlation functions and would require a better understanding of the noise sources to be unambiguously interpreted. Nevertheless, we note that for a given pair of stations the same noise sources are illuminating both the CMB and potential shallower reflectors. It is therefore justified to discuss the relative amplitude of the reflected phases with respect to the reflection at the CMB. As mentioned earlier in the paper (Fig. 3), one can also note that the size of our target is smaller than the noise source Fresnel zone of the PcP signals by a factor 4. This suggests that the local comparison between the subarrays is also justified.

To build the reflection maps, we first normalize each reflectivity function  $R_z$  by the average amplitude  $\langle R_{2890} \rangle$  at the CMB (2890 km of depth) with  $\langle \cdot \rangle$  denoting the average over all paths, and we proceed identically with the synthetics analysis by dividing each function  $I_z$  by  $\langle I_{2890} \rangle$ . We then divide each function  $R_z$  and  $I_z$



**Figure 4.** (a) Example of a vespectrogram from a single subarray combination (of an epicentral distance of  $63^\circ$ ). The stars correspond to the  $P$  and PcP arrivals. (b) Normalized  $R_z$  function extracted from (a). (c)  $R_z$  functions for all subarray combinations as a function of interarray distance. Purple colour highlights  $P$  and PcP signals.

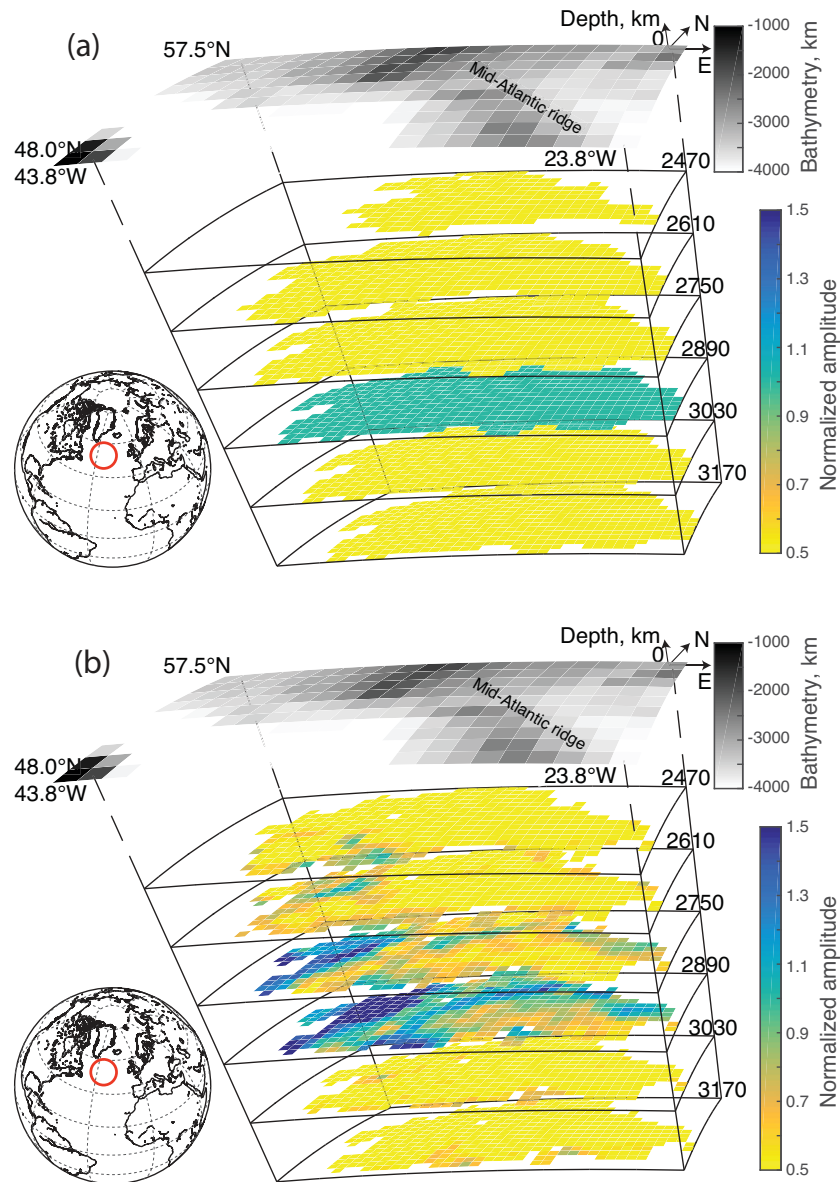
by the amplitude  $I_{2890}$  of the corresponding path at the CMB to correct the amplitude variations due to geometrical spreading and attenuation. The final  $R_z$  and  $I_z$  functions can be seen as a proxy of the  $P$ -wave reflectivity relative to the CMB discontinuity. After this normalization, the theoretical CMB within  $I_z$  functions should show up with a value of 1.

Most studies that look for lower mantle heterogeneities use shear waves propagating between about  $70^\circ$  and  $85^\circ$  of epicentral distances. In this distance range, precursory arrivals are usually well separated from  $S$  and ScS branches (about 10 s separation, e.g. Kito *et al.* 2007; Lay & Garnero 2011). In our case, using the  $P$  waves emerging alone from correlations (no  $S$  waves) we work between  $51^\circ$  and  $73^\circ$ . For the largest distance, we expect to have less than a dominant period lag between PcP and potential precursory arrival (Fig. S3). To verify the geographical distribution of the heterogeneities as seen in Fig. 4c (as a function of distance) functions  $R_z$  (and similarly  $I_z$ ) are projected on a latitude-longitude  $950 \text{ km} \times 1250 \text{ km}$  ( $680 \text{ km} \times 520 \text{ km}$  at the CMB) grid to form a 3-D final image. We sample the grid by a longitude and latitude spacing of 0.5 degrees. At each point of the grid we average the functions  $R_z$  reflected at the location provided there are at least four  $R_z$  functions (i.e. array combinations). Fig. 5(b) shows the interpolated values  $R_z$  at six different depths from 2470 km in the mantle to 3170 km in the outer core. The same process is performed from the synthetic functions  $I_z$  whose results are shown in Fig. 5(a) as a reference. This reference figure shows that our processing does not introduce lateral bias and is calibrated to resolve the CMB. We perform a bootstrap analysis to assess the quality of the 3-D image we reconstruct (Fig. S4). We perform 1000 random samplings of 75 per cent of the subarray combinations. Figs S4(a) and (b) represent the average value and standard deviation obtained between all tests at the different locations can. The averaged 3-D image (Fig. S4a) is very consistent with the overall result in Fig. 5(b). The low value of the standard

deviation, that is to say various combinations of arrays give similar estimations for the same reflector point, is a good indication that our results are robust; small scale heterogeneities of the mantle are not dominating the image.

#### 4 DISCUSSION

As expected, the result obtained from synthetics generated using a 1-D model, in Fig. 5(a), shows a laterally homogeneous reflection at the CMB (with a value of 1 due to our normalization) and no reflection above or beneath. This shows that our array processing and overall imaging workflow does not introduce artefacts. The result obtained with noise-based data, in Fig. 5(b), also shows a major reflection at the CMB but with strong lateral variations and reflected energy at smaller depths. This coincides with the observations made in Fig. 4(c). At depth of the CMB,  $R_{2890}$  shows a clear high reflectivity anomaly (blue area) of about  $200 \text{ km} \times 100 \text{ km}$  in the northwest region. Since the amplitudes are normalized so that the average amplitude at the CMB is set to one, this observed high amplitude anomaly implies a strong reflectivity increase relative to theoretical CMB. This structure extends upward in the lower mantle to 2600 km depth. We can also note that, as was seen in Fig. 4(c), there is no energy reflected in the outer core, except from the amplitude introduced by finite frequency effect of the PcP pulse width that is centred at the CMB depth (this effect already vanished on the first slice below the CMB at 3030 km depth). One could question if the precursory signals could be an effect of broadening of the PcP pulse. We expect a broadening effect of stacking to affect depths above and below the CMB after migration. We note in Fig. 4(c) that the wiggles detected prior to the PcP have a much larger amplitude than the small amplitude oscillations visible below the CMB. The comparison with ak135 synthetics confirms that clear reflected waves originate from above the CMB.



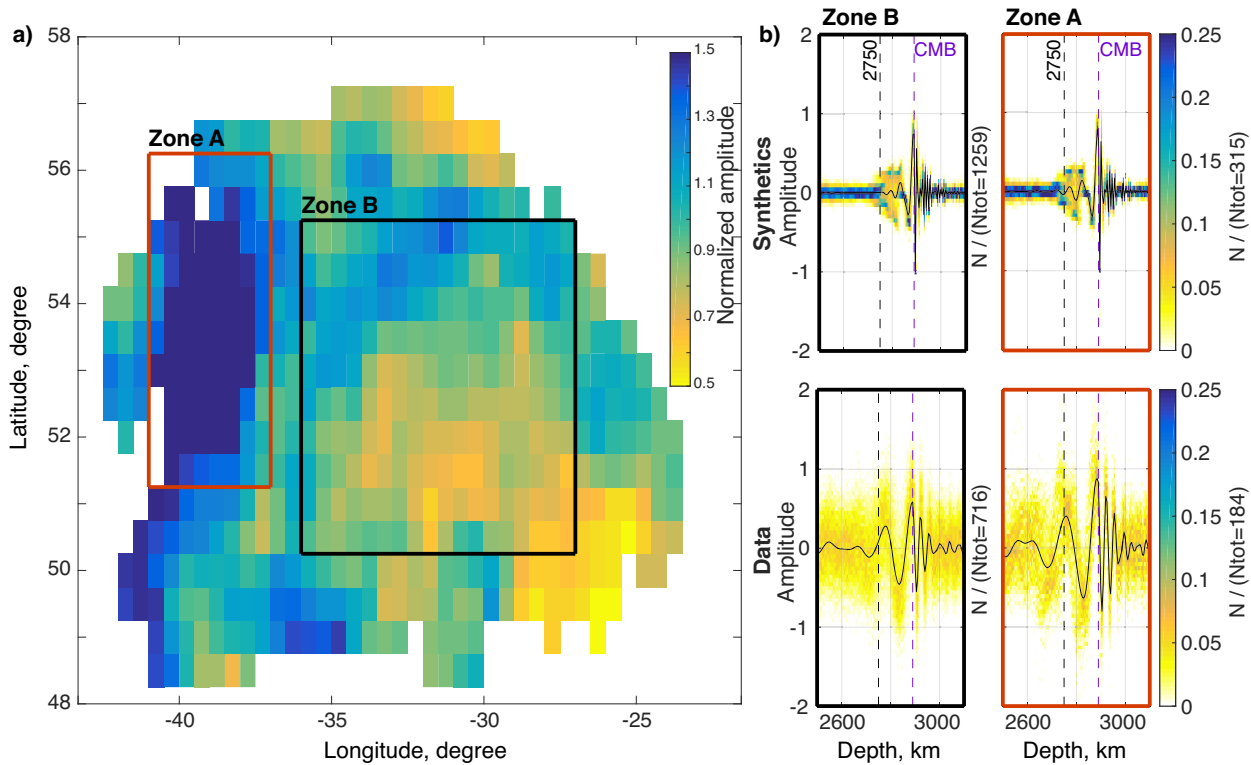
**Figure 5.** Pseudo reflectivity 3-D image obtained from (a) synthetic waveforms (ak135) and (b) signals extracted from ambient noise records. CMB is visible at 2890 km depth.

The process we use to detect arrivals around the CMB combines the envelope vespagrams generated at the multiple reflection points. While this process makes the observations more robust, the stack smooths lateral variations. As mentioned earlier, we do not expect to recover absolute amplitudes with ambient noise correlations and we aim at detecting the precursory arrivals and to compare their relative amplitude with PcP. The CMB amplitude is also normalized by its average value, meaning that a value of 1 corresponds to the expected CMB contrast (defined by ak135). The observed structure, which extends upward to 2600 km, is too thick for a ULVZ, however, it is consistent in terms of size with other  $D''$  observations in other regions (Lay 2015; Li *et al.* 2019). In contrast, the southeast region of the image shows a lower reflectivity at the CMB. The transition between these two areas reveals complex patterns with a typical size of about 50 km. Fluctuations of the amplitude at the CMB range from 0.5 to 1.5. We will interpret these variations of about 50 per cent of the reflectivity cautiously due to the difficulty to

properly calibrate correlation amplitudes (as explained above) and also due to the possible impact of a critical reflection as discussed later. However, we show a raw image without further processing to highlight the spatial variability of the structures. Indeed, the characteristic size of the heterogeneities we see on Fig. 5(b) are in good agreement with previous observations in neighboring areas of roughly 300 km thick and laterally discontinuous  $D''$  reflectors (Yao *et al.* 2015; Durand *et al.* 2019). A full comparison would probably require combining earthquake and microseism data as well as the  $S$  waves extracted from microseism excitation correlations. Such microseism based  $S$  wave signals have been proved to exist for very energetic oceanic events (Nishida & Takagi 2016), but appear to be more difficult to extract than  $P$  waves

To verify that our results are not significantly impacted by noise source distribution or transient signals, we compare the images produced by the anticausal and causal part of the correlation separately (i.e. waves travelling from the United States to Europe and in the





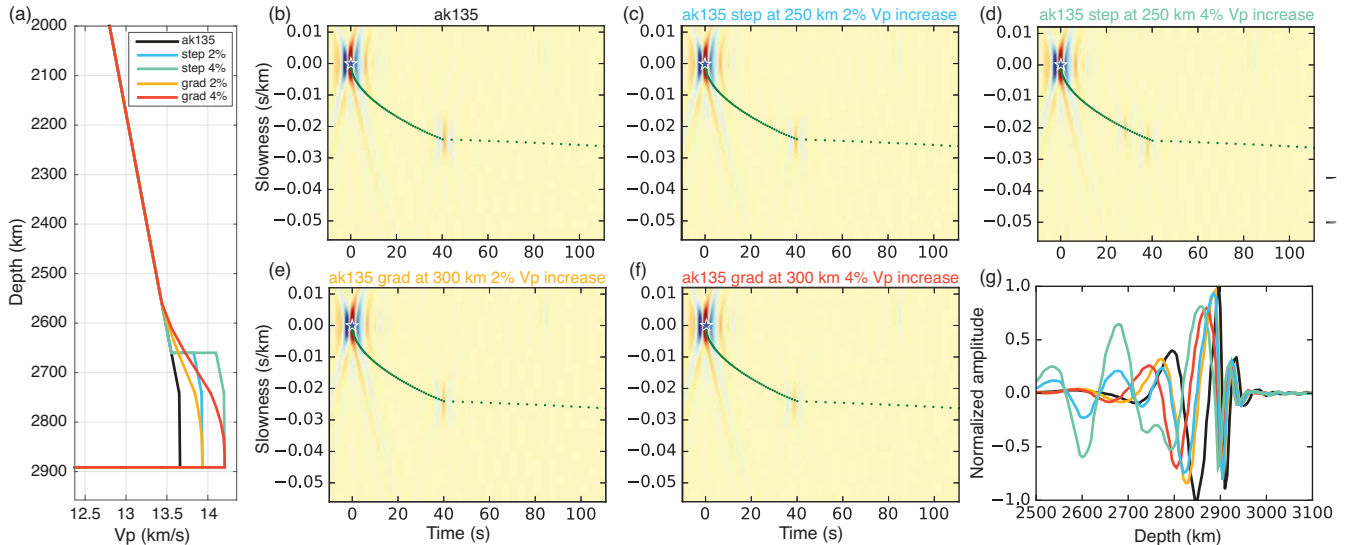
**Figure 6.** (a) Pseudo reflectivity at the depth of CMB as seen in Fig. 5(b). The two boxes show areas where signals are extracted for polarity analysis, a zone with positive anomaly and an average zone in red and black respectively. (b) Density representation of all phase-preserved regionalized  $I_z$  functions for the synthetics (top) and phase-preserved regionalized  $R_z$  functions from data (bottom) for the two areas.

reverse direction). The results are presented in Fig. S5. The large-scale variations as discussed above are visible with a positive anomaly in the northwest area in both cases. These images also help to estimate a lateral resolution at the CMB for Fig. 5 of roughly 100 km. Indeed, at lower scales there are some differences between the results obtained with the causal and the anticausal part of the correlations. We represent the difference between the results obtained with the causal and anticausal parts of the correlations in Fig. S6. Other parameters such as the intersubarray distance or the number of stacked signals per bin to construct the image are also possible sources of artefacts and biases in our final result. To check that there is no such bias from these parameters we compared them to the image at the CMB (see Fig. S7). No significant bias emerges from these comparisons. For instance, isovalues of the mean intersubarray distance are crossing the main features of the image. Finally, the bootstrap analysis (Fig. S4) shows that no subarray pair dominates the results and creates unreliable observations.

Until now, we only used the envelope of the vespagrams for our analyses. We also perform the same process while keeping track of the phase information, meaning not computing the envelope, to analyse the relative polarity of the precursory arrivals. Fig. 6(b) shows these observations of  $R_z/R_{2980}$  averaged over two different areas (zone A and zone B) and for both the data and the synthetic waveforms. As already discussed, the limited bandwidth of the secondary microseism limits the temporal resolution of the pulses we extract resulting in a possible overlap of the CMB arrival with the precursory signal. It is thus not straightforward to conclude on the phase of precursors. There does not seem to be a polarity flip, but we cannot conclude about a potential phase shift to better constrain the real reflection coefficient. Looking at the averaged pulse observed for the positive anomaly in the northwest area (zone A, red

rectangle in Fig. 6) it seems that precursory arrival amplitude is high when the CMB reflection is also high. In terms of reflection coefficients, this coincides with a high-velocity  $D''$  layer for both  $P$  and  $S$  waves (as it will be developed later). Looking now at the pulse observed for the other region, which shows a lower reflectivity at the CMB (zone B, black rectangle, Fig. 6a), the existence of a precursory signal is less evident. It is interesting to note that the synthetic signals, for which the same processing workflow was applied, show in addition to a clear CMB reflection a small precursory signal at 2750 km depth, where ak135 experiences a velocity gradient decrease. Our simple migration scheme allows us to properly capture this anomaly. Finally, both data-based averaged pulses (Fig. 6b) show an asymmetric pattern with apparent lower frequencies above the CMB compared to below it. This is mostly due to a stretching effect introduced by the depth migration of the correlation functions (see green dots on Fig. 4a). This effect appears on the synthetic pulses shown on Fig. 6(b), but it is particularly clear if we take a single signal (Fig. 7g).

To go deeper in our interpretation of the precursory signals we are observing, we now consider very simple 1-D models of positive  $P$ -wave velocity increase in the last kilometres of the lower mantle. Starting from ak135 as a reference (in black, Fig. 7), we consider four different perturbed models to describe a hypothetical  $D''$  layer (Fig. 7a): two models with a simple positive step discontinuity 250 km above the CMB, and two models with a smoother gradient starting around 300 km above the CMB. In both cases a  $P$ -wave velocity perturbation ( $\delta V_p$ ), is fixed to 2 and 4 per cent, respectively ( $\delta V_s = 0$ ), relative to ak135 within the entire  $D''$  layer. We then recreate the configuration of one set of subarrays, with a source on one side of the ocean and 249 stations on the other side (assimilating the virtual station on one side of the ocean and all the others on the



**Figure 7.** (a) proposed velocity models. (b–f) Vespectrams computed for each model at a distance of  $62^\circ$ . (g)  $I_z$  functions obtained following the same process as in Fig. 6(b) and for each model.

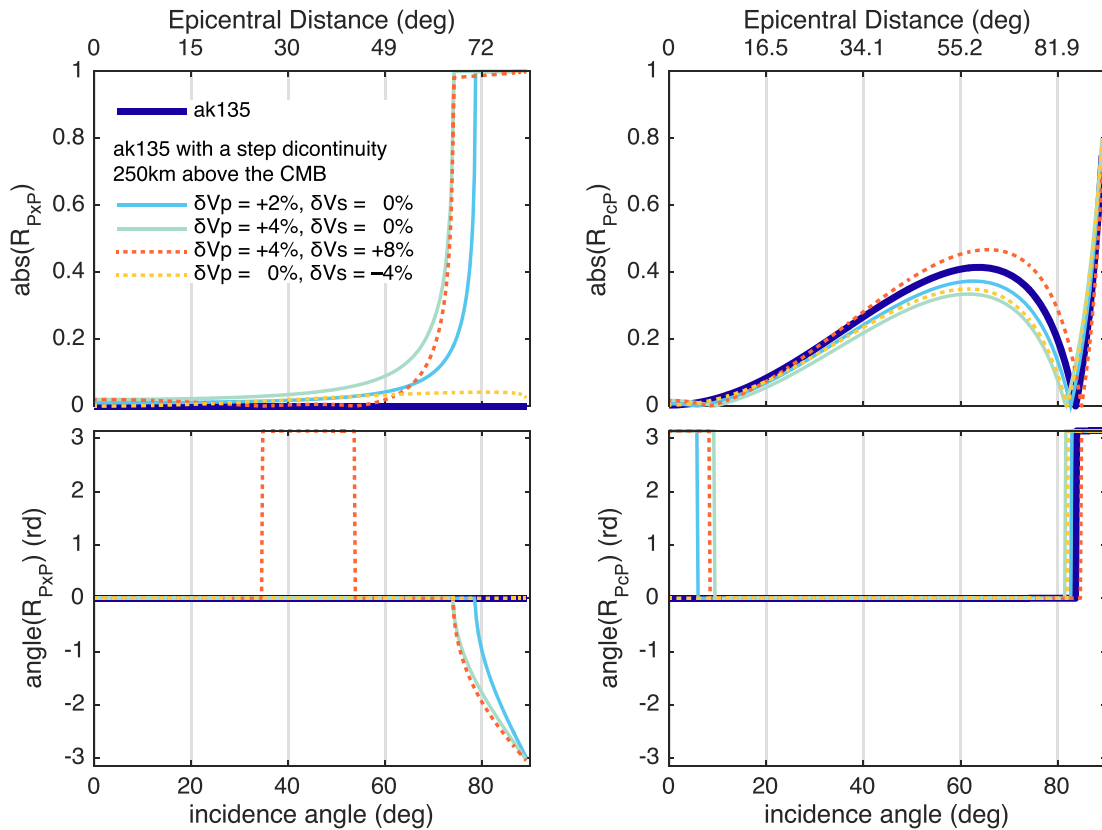
other side). The average distance is 62 degrees. Synthetic signals are generated using *axisem* (Nissen-Meyer *et al.* 2014) for a vertical point force source at the surface. The signals are filtered in the 3–8 s period band, similarly to the data. We compute the vespectrogram for each model following the process used to generate Fig. 4(a), without taking the envelope (Fig. 7b–f). We extract each function  $I_z$  from the vespectrams, using the migration described in Fig. 4. We represent the different  $I_z$  functions in Fig. 7(g) (the colours follow Fig. 7a). Fig. 7(g) is comparable to Fig. 6(b) but for a single reflection point (no spatial averaging). Indeed, in this new and simpler case, the stretching effect due to the migration is clearly visible.

Both step models generate a clear precursory signal centered around 2650 km and visible on Fig. 7(g). We can observe a tenuous PdP arrival in Fig. 7(d), but similar observation is difficult for a 2 per cent step increase (Fig. 7c). The signal of the 4 per cent step increase visible on Fig. 7(g) is the closest of our observation for zone A on Fig. 6(b) (red rectangle). Both models with a smoother  $D''$  velocity increase (grad 2 per cent and grad 4 per cent) show a slight stretching towards lower depth (expected for a velocity increase) with no clear precursors. These simple examples show that, using our workflow, we can detect a 250-km-thick  $D''$  and distinguish between sharp (step) and smooth (gradient) velocity increase. By comparing Figs 7(g) with 6(b), the strong reflectivity anomaly on the northwest edge of our study area (visible on Fig. 5 and discussed as zone A on Fig. 6) would probably give a best fit with an intermediate model between step 4 per cent and grad 4 per cent. The absence of a clear precursory arrival on many of the signals from other regions of our study zone (Fig. 4c) could indicate smoother velocity variation.

Based on theoretical reflection coefficients on both the CMB and on a hypothetical  $D''$  discontinuity, we can estimate the minimal requirements in terms of structural variation to explain our observations. First, theoretical reflection coefficients are computed for the CMB and a 250 km thick (step)  $D''$  for all combinations of parameters that define the anomaly, including  $\delta V_p$ ,  $\delta V_s$  and  $\delta \rho$  (density). These parameters are ranging from  $-20$  to  $+20$  per cent. In order to match our signal processing workflow, all reflection coefficients are then normalized by a not-perturbed reference CMB reflectivity at each epicentral distance. Fig. S8 gives an example of representation

for these 3-D parametric normalized reflection coefficients. Fig. 8 shows reflection coefficients as a function of incidence angles and epicentral distances (without normalization) for 5 models including ak135. By comparing normalized reflection coefficients to what we observe Fig. 5(b) and for the high reflectivity anomaly (zone A, Fig. 6a) with a high reflectivity above ( $R_{2610} = 1$ ) and at the CMB ( $R_{2890} = 1.2$ ) the smallest perturbation needed is about  $\delta V_s = +8$  per cent and  $\delta V_p = +4$  per cent if we consider a 250-km-thick  $D''$  step perturbation of ak135 (similar to the Fig. 7, and here named model step1). Using the same approach we can evaluate that a decrease of  $V_s$  of about  $\delta V_s = -4$  per cent within the last 250 km of the lower mantle (model step2) could explain zone B (Fig. 6a) where we observe a low  $D''$  reflectivity ( $R_{2610} = 0.2$ ) and a low CMB reflectivity ( $R_{2890} = 0.8$ ). Fig. 8 shows theoretical reflection coefficients for both step 1 and step 2. These two simple models correspond to a first-order evaluation that tends to show that Fig. 5(b) contains structural information. However, we note that density is poorly constrained by this approach and can stay almost the same with less than a per cent of variation.  $V_s$  perturbation is also not very well constrained especially for a positive  $V_p$  anomaly, which leads to a critical reflection at short epicentral distances (see Figs 8 and S8). A higher sensitivity on  $V_p$  is not surprising since we are only dealing with  $P$  waves.

The velocity perturbations estimated here are a little high and difficult to explain in the framework of a perovskite/post-perovskite transition where we expect weak velocity perturbation for  $D''$  (Cobden *et al.* 2015). But two remarks can be made to support our observations. First, a  $P$ -wave velocity increase of about  $\delta V_p = +4$  per cent is in good agreement, although in the upper range, with previous seismological studies in neighbouring regions (Weber & Körnig 1992; Durand *et al.* 2019). A greater  $V_s$  discontinuity ( $\delta V_s = +8$  per cent), on the other hand, farther away from previous observations (Yao *et al.* 2015; Durand *et al.* 2019), but again not well resolved in our case. For a fixed value of  $\delta V_p = +4$  per cent, a positive jump of  $V_s$  has a relatively small influence on the observed  $P$ -wave reflectivity of the  $D''$  layer; the observed  $\delta V_s$  is in fact mostly controlled by the slight increase of the CMB reflectivity (see the difference between model step1 and step4 in Fig. 8), which is less resolved due to PdP pulse broadening and possible overlapping



**Figure 8.** Reflection coefficient amplitude (top panel) and phase (bottom panel) at the CMB (right-hand panel) and for a step-like  $D''$  layer 250 km above the CMB (left-hand panel) computed as a function of epicentral distances and for different models. Thick blue lines correspond to ak135. Dotted lines correspond to minimal requirements to explain red and black areas in Fig. 6. Light blue and green lines correspond to the 2 step models discussed in Fig. 7.

with PcP. Secondly, the fact that we are observing what appears to be relatively strong velocity perturbations could be related to the presence of critical reflection at relatively short epicentral distances. The different models with a positive  $\delta Vp$  presented in Fig. 8 (step1, step3 and step4) show sharp increases of reflectivity between  $50^\circ$  and  $70^\circ$  of epicentral distances (similar range that we are using in this study). By possibly mixing pre- and post-critical reflections during the required spatial averaging of the beam-formed correlation functions (Fig. 4c), we are aware that we may introduce non-physical reflectivity values in our result (Fig. 5b). Even if the spatial averaging also helps us to smooth these possible biases, the quantification of the influence of such critical reflections would require an *a priori* knowledge of the  $D''$  structure and could be a subject of a separate study (with synthetic data). Finally, we speculate that the amount of data involved in our method might also be a very efficient way to precisely measure the critical angle for precursory reflections and thus give a very strong constraint on  $\delta Vp$  and thickness of the  $D''$ , but this is beyond the scope of the present article, and will be addressed in future work.

## 5 CONCLUSIONS

We have built a 3-D image of the CMB region under the Atlantic Ocean from the correlations computed between 1 yr records of seismic stations in Europe and in the United States. Fig. 5(b) constitutes a first tentative, 3-D image of the CMB region derived from microseism excitation. Even if critical reflection may introduce a bias of amplitude in the image, we are confident in the shape and spatial

extension of our detection. We compared our observations to different possible models containing a hypothetical  $D''$  layer. A model containing a  $Vp$  velocity increase of 4 per cent is consistent with our observations and neighboring studies.

Earthquake data and careful synthetic tests would help to better constrain the structural properties. Our methodology would also greatly benefit from other observations such as secondary microseism  $S$ -wave reconstruction (Nishida & Takagi 2016) and/or high-frequency signals from specific storms (for example typhoon Ioke, Retailleau & Gualtieri 2019).

The lowermost mantle is known to incorporate multiscale heterogeneities with direct consequences for both mantle and core dynamics (Tkalčić *et al.* 2015). Detailed studies of high frequency scattered waves and lower frequency waves used for global tomography already give a good picture of these heterogeneities where earthquake data are available. We believe that the present approach can help link up these different scales to form a more comprehensive image of the lowermost mantle by providing complementary information where earthquake data are scarce.

## ACKNOWLEDGEMENTS

The data set was downloaded and processed using python and the seismological community scientific library **obsPy** (Krischer *et al.* 2015). The figures were produced using Python and MATLAB and the Python module **basemap** was used to produce the map. The facilities of IRIS Data Services, and specifically the IRIS Data Management Center, were used for access to waveforms, related metadata, and/or derived products used in this study. IRIS Data

Services are funded through the Seismological Facilities for the Advancement of Geoscience (SAGE) Award of the National Science Foundation under Cooperative Support Agreement EAR-1851048.

The computation of the correlation functions presented in this paper was performed using the GRICAD infrastructure (<https://gricad.univ-grenoble-alpes.fr>), which is partly supported by the Equip@Meso project (reference ANR-10-EQPX-29-01) of the programme Investissements d'Avenir supervised by the Agence Nationale pour la Recherche. This work has been supported by a grant from Labex OSUG@2020 (Investissements d'avenir—ANR10 LABX56) and Fondation Simone et Cino Del Duca, Institut de France (Prix scientifique 2013). We acknowledge the support from the European Research Council (ERC) under the European Union's Horizon 2020 research and innovation program (grant agreement No 742335, F-IMAGE). The research of LR was supported by Pacific Gas and Electric. We thank K. Schaukowitch and the Hume centre for writing and speaking at Stanford for useful comments that helped us to improve the manuscript. We thank the Editor, Michael Ritzwoller, Stéphanie Durand and two anonymous reviewers for their comments and suggestions which helped to improve the quality of this paper.

## REFERENCES

- Ardhuin, F., Stutzmann, E., Schimmel, M. & Mangeny, A., 2011. Ocean wave sources of seismic noise, *J. geophys. Res.*, **116**(C9), doi:10.1029/2011JC006952.
- Boué, P., Poli, P., Campillo, M., Pedersen, H., Briand, X. & Roux, P., 2013. Teleseismic correlations of ambient seismic noise for deep global imaging of the Earth, *Geophys. J. Int.*, **194**(2), 844–848.
- Boué, P., Poli, P., Campillo, M. & Roux, P., 2014a. Reverberations, coda waves and ambient noise: correlations at the global scale and retrieval of the deep phases, *Earth planet. Sci. Lett.*, **391**, 137–145.
- Boué, P., Roux, P., Campillo, M. & Briand, X., 2014b. Phase velocity tomography of surface waves using ambient noise cross correlation and array processing, *J. geophys. Res.*, **119**(1), 519–529.
- Boyett, M. & Carlson, R.W., 2005. 142Nd evidence for early (>4.53 Ga) global differentiation of the silicate Earth, *Science*, **309**(5734), 576–581.
- Bullen, K.E., 1949. Compressibility-pressure hypothesis and the Earth's interior, *Geophys. J. Int.*, **5**, 335–368.
- Cobden, L., Thomas, C. & Trampert, J., 2015. Seismic detection of post-perovskite inside the Earth, in *The Earth's Heterogeneous Mantle*, pp. 391–440. Springer.
- Crotwell, H.P., Owens, T.J. & Ritsema, J., 1999. The TauP Toolkit: flexible seismic travel-time and ray-path utilities, *Seismol. Res. Lett.*, **70**, 154–160.
- Department of Earth and Environmental Sciences, Geophysical Observatory, University of Munchen. 2001. *BayernNetz. International Federation of Digital Seismograph Networks*. Other Seismic Network. <https://doi.org/10.7914/SN/BW10.7914/SN/BW>.
- Durand, S., Debayle, E., Ricard, Y. & Lambotte, S., 2016. Seismic evidence for a change in the large-scale tomographic pattern across the D'' layer, *Geophys. Res. Lett.*, **43**(15), 7928–7936.
- Durand, S., Debayle, E., Ricard, Y., Zanolli, C. & Lambotte, S., 2017. Confirmation of a change in the global shear velocity pattern at around 1000 km depth, *Geophys. J. Int.*, **211**(3), 1628–1639.
- Durand, S., Thomas, C. & Jackson, J.M., 2019. Constraints on D'' beneath the North Atlantic region from P and S traveltimes and amplitudes, *Geophys. J. Int.*, **216**(2), 1132–1144.
- Earle, P.S. & Shearer, P.M., 1997. Observations of PKKP precursors used to estimate small-scale topography on the core-mantle boundary, *Science*, **277**(5326), 667–670.
- Fichtner, A., Stehly, L., Ermert, L. & Boehm, C., 2016. Generalised interferometry – I. Theory for inter-station correlations, *Geophys. J. Int.*, **208**(2), 603–638.
- French, S.W. & Romanowicz, B., 2015. Broad plumes rooted at the base of the Earth's mantle beneath major hotspots, *Nature*, **525**(7567), 95.
- Garnero, E.J., 2000. Lower mantle heterogeneity, *Annu. Rev. Earth planet. Sci.*, **28**, 509–537.
- Garnero, E.J., McNamara, A.K. & Shim, S.H., 2016. Continent-sized anomalous zones with low seismic velocity at the base of Earth's mantle, *Nat. Geosci.*, **9**(7), 481.
- Gassner, A., Thomas, C., Krüger, F. & Weber, M., 2015. Probing the core-mantle boundary beneath Europe and Western Eurasia: a detailed study using PcP, *Phys. Earth planet. Inter.*, **246**, 9–24.
- GEOFON Data Centre. 1993. Geofon seismic network, deutsches geoforschungszentrum GFZ, doi:10.14470/TR560404, other/Seismic Network.
- Gerstoft, P., Shearer, P.M., Harmon, N. & Zhang, J., 2008. Global P, PP, and PKP wave microseisms observed from distant storms, *Geophys. Res. Lett.*, **35**, L23306, doi:10.1029/2008GL036111.
- Glatzmaier, G.A., Coe, R.S., Hongre, L. & Roberts, P.H., 1999. The role of the Earth's mantle in controlling the frequency of geomagnetic reversals, *Nature*, **401**, 885–890.
- Hasselmann, K., 1963. A statistical analysis of the generation of microseisms, *Rev. Geophys.*, **1**(2), 177–210.
- Hernlund, J. & McNamara, A.K., 2015. The core-mantle boundary region, in *Treatise on Geophysics*, 2nd edn, Vol. 7, pp. 461–519, Elsevier.
- Hillers, G., Graham, N., Campillo, M., Kedar, S., Landès, M. & Shapiro, N., 2012. Global oceanic microseism sources as seen by seismic arrays and predicted by wave action models, *Geochem., Geophys., Geosyst.*, **13**(1), doi:10.1029/2011GC003875.
- Houser, C., Masters, G., Shearer, P. & Laske, G., 2008. Shear and compressional velocity models of the mantle from cluster analysis of long-period waveforms, *Geophys. J. Int.*, **174**(1), 195–212.
- Huang, H.H., Lin, F.C., Tsai, V.C. & Koper, K.D., 2015. High-resolution probing of inner core structure with seismic interferometry, *Geophys. Res. Lett.*, **42**(24), 10–622.
- Institute of Geophysics, Academy of Sciences of the Czech Republic. 1973. *Czech Regional Seismic Network, International Federation of Digital Seismograph Networks*, doi:10.7914/SN/CZ, other/Seismic Network.
- IRIS DMC. 2015. *Data Services Products: Synthetic Engine*, <https://doi.org/10.17611/DP/SYNGINE.1>.
- Kedar, S., Longuet-Higgins, M., Webb, F., Graham, N., Clayton, R. & Jones, C., 2008. The origin of deep ocean microseisms in the North Atlantic Ocean: the Royal Society, *Proc. Royal Soc. Lond., A*, **464**(2091), 777–793.
- Kennett, B.L.N. & Engdahl, E.R., 1991. Traveltimes for global earthquake location and phase identification, *Geophys. J. Int.*, **105**(2), 429–465.
- Kennett, B.L.N., Engdahl, E.R. & Buland, R., 1995. Constraints on seismic velocities in the Earth from traveltimes, *Geophys. J. Int.*, **122**(1), 108–124.
- Kennett, B.L.N. & Pham, T.S., 2018. The nature of Earth's correlation wavefield: late coda of large earthquakes, *Proc. R. Soc. A*, **474**(2214), 20180082.
- Kito, T., Rost, S., Thomas, C. & Garnero, E.J., 2007. New insights into the P- and S-wave velocity structure of the D'' discontinuity beneath the Cocos plate, *Geophys. J. Int.*, **169**(2), 631–645.
- Koelemeijer, P., Ritsema, J., Deuss, A. & Van Heijst, H.J., 2016. SP12RTS: a degree-12 model of shear- and compressional-wave velocity for Earth's mantle, *Geophys. J. Int.*, **204**(2), 1024–1039.
- Krischer, L., Hutko, A., van Driel, M., Stähler, S., Bahavar, M., Trabant, C. & Nissen-Meyer, T., 2017. On-demand custom broadband synthetic seismograms, *Seismol. Res. Lett.*, **88**(4), doi:10.1785/0220160210.
- Krischer, L., Megies, T., Barsch, R., Beyreuther, M., Lecocq, T., Caudron, C. & Wassermann, J., 2015. ObsPy: a bridge for seismology into the scientific Python ecosystem, *Comput. Sci. Discov.*, **8**(1), 014,003.
- Krüger, F., Weber, M., Scherbaum, F. & Schlittenhardt, J., 1993. Double beam analysis of anomalies in the core-mantle boundary region, *Geophys. Res. Lett.*, **20**(14), 1475–1478.
- Kustowski, B., Ekström, G. & Dziewoński, A.M., 2008. Anisotropic shear-wave velocity structure of the Earth's mantle: a global model, *J. geophys. Res.*, **113**(B6), doi:10.1029/2007JB005169.
- Lai, H., Garnero, E.J., Grand, S.P., Porritt, R.W. & Becker, T.W., 2019. Global travel time data set from adaptive empirical wavelet construction, *Geochem., Geophys., Geosyst.*, **20**(5), 2175–2198.

- Landès, M., Hubans, F., Shapiro, N.M., Paul, A. & Campillo, M., 2010. Origin of deep ocean microseisms by using teleseismic body waves, *J. geophys. Res.*, **115**, B05302, doi:10.1029/2009JB006918.
- Lay, T., 2007a, Deep earth structure – lower mantle and D, in *Treatise on Geophysics, Seismology and Structure of the Earth*, eds Romanowicz, B. Dziewonski, A. & Schubert, G., p. 634, AGU.
- Lay, T., 2015. *Deep Earth Structure: Lower Mantle and D''*, *Treatise on Geophysics*, 2nd edn, Vol. 1, Elsevier, pp. 683–672
- Lay, T. & Garnero, E.J., 2011. Deep mantle seismic modeling and imaging, *Ann. Rev. Earth planet Sci.*, **39**, 91–123.
- Lay, T. & Helmberger, D.V., 1983. A lower mantle S-wave triplication and the shear velocity structure of D'', *Geophys. J. R. Astron. Soc.*, **75**(3), 799–837.
- Lekic, V., Cottaar, S., Dziewonski, A. & Romanowicz, B., 2012. Cluster analysis of global lower mantle tomography: a new class of structure and implications for chemical heterogeneity, *Earth planet. Sci. Lett.*, **357**, 68–77.
- Li, L., Boué, P. & Campillo, M., 2020. Observation and explanation of spurious seismic signals emerging in teleseismic noise correlations, *Solid Earth*, **11**, 173–184.
- Lin, F.C., Tsai, V.C., Schmandt, B., Duputel, Z. & Zhan, Z., 2013. Extracting seismic core phases with array interferometry, *Geophys. Res. Lett.*, **40**(6), 1049–1053.
- Li, Y., Miller, M.S. & Sun, D., 2019. Seismic imaging the D'' region beneath the Central Atlantic, *Phys. Earth planet. Inter.*, **292**, 76–86.
- Longuet-Higgins, M.S., 1950. A theory of the origin of microseisms, *Phil. Trans. R. Soc. Lond. A*, **243**(857), 1–35.
- Moulik, P. & Ekström, G., 2014. An anisotropic shear velocity model of the Earth's mantle using normal modes, body waves, surface waves and long-period waveforms, *Geophys. J. Int.*, **199**(3), 1713–1738.
- Mégnin, C. & Romanowicz, B., 2000. The three-dimensional shear velocity structure of the mantle from the inversion of body, surface and higher-mode waveforms, *Geophys. J. Int.*, **143**(3), 709–728.
- Nishida, K., 2013. Global propagation of body waves revealed by cross-correlation analysis of seismic hum, *Geophys. Res. Lett.*, **40**(9), 1691–1696.
- Nishida, K. & Takagi, R., 2016. Teleseismic S wave microseisms, *Science*, **353**(6302), 919–921.
- Nissen-Meyer, T., Driel, M.V., Stähler, S., Hosseini, K., Hempel, S., Auer, L., Colombi, A., & Fournier, A., 2014. AxiSEM: broadband 3-D seismic wavefields in axisymmetric media, *Solid Earth*, **5**(1), 425–445.
- Panning, M. & Romanowicz, B., 2006. A three-dimensional radially anisotropic model of shear velocity in the whole mantle, *Geophys. J. Int.*, **167**(1), 361–379.
- Phạm, T.S., Tkalčić, H., Sambridge, M. & Kennett, B.L., 2018. Earth's correlation wavefield: late coda correlation, *Geophys. Res. Lett.*, **45**(7), 3035–3042.
- Poli, P., Campillo, M. & de Hoop, M., 2017. Analysis of intermediate period correlations of coda from deep earthquakes, *Earth planet. Sci. Lett.*, **477**, 147–155.
- Poli, P., Campillo, M. & Pedersen, H., LAPNET Working Group. 2012b. Body-wave imaging of Earth's mantle discontinuities from ambient seismic noise, *Science*, **338**(6110), 1063–1065.
- Poli, P., Pedersen, H.A. & Campillo, M., 2012a. Emergence of body waves from cross-correlation of short period seismic noise, *Geophys. J. Int.*, **188**(2), 549–558.
- Poli, P., Thomas, C., Campillo, M. & Pedersen, H.A., 2015. Imaging the D'' reflector with noise correlations, *Geophys. Res. Lett.*, **42**(1), 60–65.
- RESIF. 1995. RESIF-RLBP French Broad-band network, RESIF-RAP strong motion network and other seismic stations in metropolitan France. RESIF - Réseau Sismologique et géodésique Français. <https://doi.org/10.15778/resif.fr>.
- Retailleau, L., Boué, P., Stehly, L. & Campillo, M., 2017. Locating microseism sources using spurious arrivals in intercontinental noise correlations, *J. geophys. Res.*, **122**(10), 8107–8120.
- Retailleau, L. & Gualtieri, L., 2019. Toward high-resolution period-dependent seismic monitoring of tropical cyclones, *Geophys. Res. Lett.*, **46**(3), 1329–1337.
- Ritsema, J., Deuss, A.A., Van Heijst, H.J. & Woodhouse, J.H., 2011. S4ORTS: a degree-40 shear-velocity model for the mantle from new Rayleigh wave dispersion, teleseismic traveltime and normal-mode splitting function measurements, *Geophys. J. Int.*, **184**(3), 1223–1236.
- Rost, S. & Earle, P.S., 2010. Identifying regions of strong scattering at the core–mantle boundary from analysis of PKKP precursor energy, *Earth planet. Sci. Lett.*, **297**(3–4), 616–626.
- Rost, S. & Thomas, C., 2002. Array seismology: Methods and applications, *Reviews of geophysics*, **40**(3)1–27.
- Ruigrok, E., Campman, X. & Wapenaar, K., 2011. Extraction of P-wave reflections from microseisms. *Compt. Rend. Geosci.*, **343**(8–9), 512–525.
- Sabra, K.G., Gerstoft, P., Roux, P., Kuperman, W.A. & Fehler, M.C., 2005. Extracting time-domain Green's function estimates from ambient seismic noise, *Geophys. Res. Lett.*, **32**(3), doi:10.1029/2004GL021862.
- Sager, K., Ermert, L., Boehm, C. & Fichtner, A., 2018. Towards full waveform ambient noise inversion, *Geophys. J. Int.*, **212**(1), 566–590.
- Scherbaum, F., Krüger, F. & Weber, M., 1997. Double beam imaging: mapping lower mantle heterogeneities using combinations of source and receiver arrays, *J. geophys. Res.*, **102**(B1), 507–522.
- Shapiro, N.M. & Campillo, M., 2004. Emergence of broadband Rayleigh waves from correlations of the ambient seismic noise, *Geophys. Res. Lett.*, **31**(7), doi:10.1029/2004GL019491.
- Shapiro, N.M., Campillo, M., Stehly, L. & Ritzwoller, M.H., 2005. High-resolution surface-wave tomography from ambient seismic noise, *Science*, **307**(5715), 1615–1618.
- Simmons, N.A., Forte, A.M. & Grand, S.P., 2009. Joint seismic, geodynamic and mineral physical constraints on three-dimensional mantle heterogeneity: Implications for the relative importance of thermal versus compositional heterogeneity, *Geophys. J. Int.*, **177**(3), 1284–1304.
- Slovenian Environment Agency. 2001. *Seismic network of the Republic of Slovenia, Ljubljana, Slovenia: International Federation of Digital Seismograph Networks*. <https://doi.org/10.7914/SN/SL>, other/Seismic Network.
- Snieder, R., 2004. Extracting the Green's function from the correlation of coda waves: a derivation based on stationary phase, *Phys. Rev. E*, **69**(4), 046610.
- Stutzmann, E., Arduin, F., Schimmel, M., Mangeny, A. & Patau, G., 2012. Modelling long-term seismic noise in various environments, *Geophys. J. Int.*, **191**(2), 707–722.
- Swiss Seismological Service (SED) at ETH Zurich. 1983. *National Seismic Networks of Switzerland*; ETH Zurich, doi:10.12686/sed/networks/ch, other/Seismic Network.
- The GEOSCOPE network, 1982. GEOSCOPE - French Global Network of broadband seismic stations. Institut de Physique du Globe de Paris & Ecole et Observatoire des Sciences de la Terre de Strasbourg (EOST) - doi:10.18715/GEOSCOPE.G.
- Thomas, C., Garnero, E.J. & Lay, T., 2004a. High-resolution imaging of lowermost mantle structure under the Cocos plate, *J. geophys. Res.*, **109**(B8), doi:10.1029/2004JB003013.
- Thomas, C., Kendall, J.M. & Lowman, J., 2004b. Lower-mantle seismic discontinuities and the thermal morphology of subducted slabs, *Earth planet. Sci. Lett.*, **225**(1–2), 105–113.
- Tkalčić, H. & Phạm, T.S., 2018. Shear properties of Earth's inner core constrained by a detection of J waves in global correlation wavefield, *Science*, **362**(6412), 329–332.
- Tkalčić, H., Young, M., Muir, J.B., Davies, D.R. & Mattesini, M., 2015. Strong, multi-scale heterogeneity in Earth's lowermost mantle, *Sci. Rep.*, **5**, 18416.
- van Driel, M., Krischer, L., Stähler, S.C., Hosseini, K. & Nissen-Meyer, T., 2015. Instant global seismograms based on a broadband waveform database, *Solid Earth*, **6**, 701–717.
- Wang, S. & Tkalčić, H., 2020. Seismic event coda-correlation: towards global coda-correlation tomography, *J. geophys. Res.*, **125** (4), doi:10.1029/2019JB018848.
- Weber, M. & Körnig, M., 1992. A search for anomalies in the lowermost mantle using seismic bulletins, *Phys. Earth planet. Inter.*, **73**(1–2), 1–28.
- Williams, Q. & Garnero, E.J., 1996. Seismic evidence for partial melt at the base of Earth's mantle, *Science*, **273**(5281), 1528–1530.

- Workman, R.K. & Hart, S.R., 2005. Major and trace element composition of the depleted MORB mantle (DMM), *Earth planet. Sci. Lett.*, **231**(1), 53–72.
- Wu, B., Xia, H., Wang, T. & Shi, X., 2018. Simulation of core phases from coda interferometry, *J. geophys. Res.*, **123**(3), 4983–4999.
- Wysession, M.E., Lay, T., Revenaugh, J., Williams, Q., Garnero, E.J., Jeanloz, R. & Kellogg, L.H., 1998. The D'' discontinuity and its implications, *Core-Mantle Bound. Region*, **28**, 273–297.
- Yao, Y., Whittaker, S. & Thorne, M.S., 2015. D'' discontinuity structure beneath the North Atlantic from Scd observations, *Geophys. Res. Lett.*, **42**(10), 3793–3801.
- Zhang, J., Gerstoft, P. & Bromirski, P.D., 2010. Pelagic and coastal sources of P-wave microseisms: generation under tropical cyclones, *Geophys. Res. Lett.*, **37**, L15301. <https://doi.org/10.1029/2010GL044288>.
- Zhan, Z., Ni, S., Helmberger, D.V. & Clayton, R.W., 2010. Retrieval of Moho-reflected shear wave arrivals from ambient seismic noise, *Geophys. J. Int.*, **182**(1), 408–420.

## SUPPORTING INFORMATION

Supplementary data are available at [GJI](#) online.

### supplementary\_review.pdf

Please note: Oxford University Press is not responsible for the content or functionality of any supporting materials supplied by the authors. Any queries (other than missing material) should be directed to the corresponding author for the paper.

## APPENDIX

[Tables A1](#) and [A2](#).

**Table A1.** The seismological networks used in Europe.  $N$  is the number of stations.

European data		
Network	$N$ stations	Data centre
BW	1	LMU, Germany (Geophysical Observatory, University of Munchen 2001)
CH	33	ETH, Switzerland [Swiss Seismological Service (SED at ETH Zurich, 1983)]
CR	1	ODC, Netherlands
CZ	13	CAS (Institute of Geophysics, Academy of Sciences of the Czech Republic 1973)
FR	33	RESIF, France (RESIF 1995)
G	3	GEOSCOPE, France (IPGP and EOST 1982)
GE	16	GFZ, Germany (GEOFON Data Centre 1993)
GR	43	BGR, Germany
IV	139	INGV, Italy
MN	17	INGV, Italy
NL	1	ODC, Netherlands
OE	11	Austrian Seismic network (ZAMG Central Institute for Meteorology and Geodynamics)
SI	6	INGV, Italy
SL	22	SEA, Slovenia (Slovenian Environment Agency 2001)
SX	11	SXNET Saxon Seismic Network (University of Leipzig, Germany)
TH	16	Thüringer Seismisches Netz, Germany (Friedrich-Schiller-Universitaet Jena)

**Table A2.** The seismological networks used in the United States.  $N$  is the number of stations.

United States data		
Network	$N$ stations	Data centre
IU	6	Global Seismograph Network (GSN-IRIS/USGS) (Albuquerque Seismological Laboratory (ASL)/USGS 1988)
LD	1	Lamont-Doherty cooperative Seismographic network (Columbia University)
TA	177	USArray Transportable Array (IRIS Transportable Array 2003)
US	23	United States National Seismic Network (Albuquerque Seismological Laboratory (ASL)/USGS 1990)