

Amiloride inhibits macropinocytosis by lowering submembranous pH and preventing Rac1 and Cdc42 signaling

Mirka Koivusalo, Christopher Welch, Hisayoshi Hayashi, Cameron C. Scott, Moshe Kim, Todd Alexander, Nicolas Touret, Klaus M. Hahn, and Sergio Grinstein

Vol. 188 No. 4, February 22, 2010. Pages 547–563.

The orientation of the schematic in Fig. 2 B was erroneously reversed in this article. The correct panel appears below.

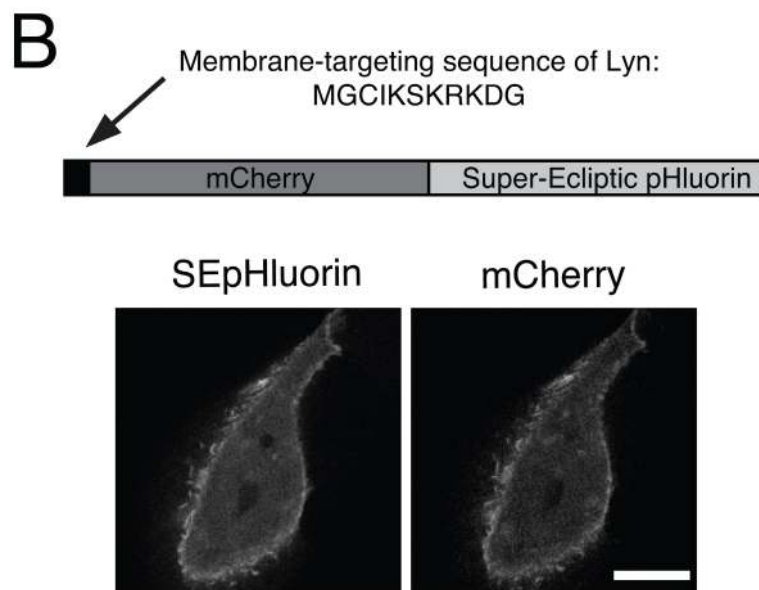


Figure 2. (B) Top: schematic of the structure of membrane-targeted SEpHluorin/mCherry chimera used to measure pH_{sm} . Bottom: confocal images of SEpHluorin (left) and mCherry fluorescence (right) in A431 cells. Bar, 10 μm .