

Supporting Information

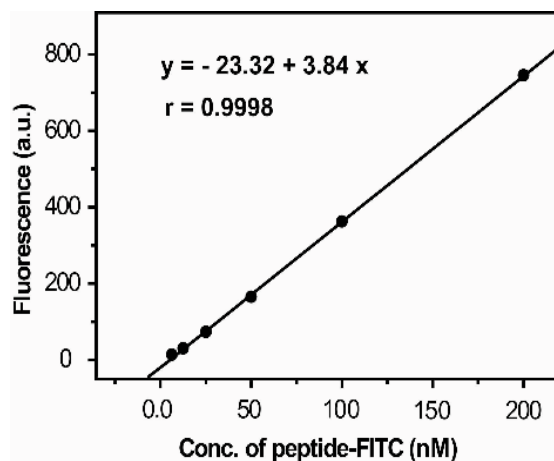
**An enzyme-sensitive probe for photoacoustic imaging and  
fluorescence detection of protease activity**

Xiaohu Xia,<sup>a,b</sup> Miaoxin Yang,<sup>a</sup> L. Kyle Oetjen,<sup>a</sup> Yu Zhang,<sup>a</sup> Qingge Li,<sup>b</sup>  
Jingyi Chen,<sup>\*a</sup> Younan Xia<sup>\*a</sup>

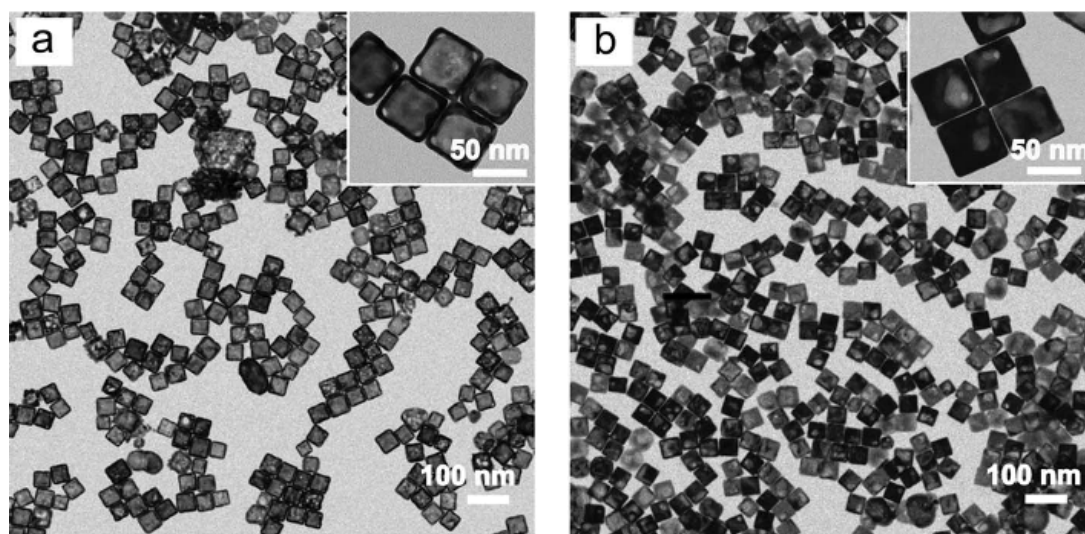
<sup>a</sup>Department of Biomedical Engineering, Washington University in St. Louis, MO 63130, USA

<sup>b</sup>Engineering Research Centre of Molecular Diagnostics, School of Life Sciences, Xiamen  
University, Xiamen, Fujian 361005, P. R. China

\*E-mails: xia@biomed.wustl.edu and chenj@uark.edu; Tel: 314-935-8328 (Y.X.)



**Figure S1.** Calibration curve showing fluorescence intensity as a function of the concentration of the FITC-labeled peptide in PBS.



**Figure S2.** TEM images of the Au nanocages used for the present study: (a) cage770 and (b) cage645.