



UvA-DARE (Digital Academic Repository)

Anaemia in patients with HIV-associated tuberculosis in South Africa: predictive/prognostic value, aetiologies and treatment

Kerkhoff, A.D.

Publication date

2016

Document Version

Final published version

[Link to publication](#)

Citation for published version (APA):

Kerkhoff, A. D. (2016). *Anaemia in patients with HIV-associated tuberculosis in South Africa: predictive/prognostic value, aetiologies and treatment.*

General rights

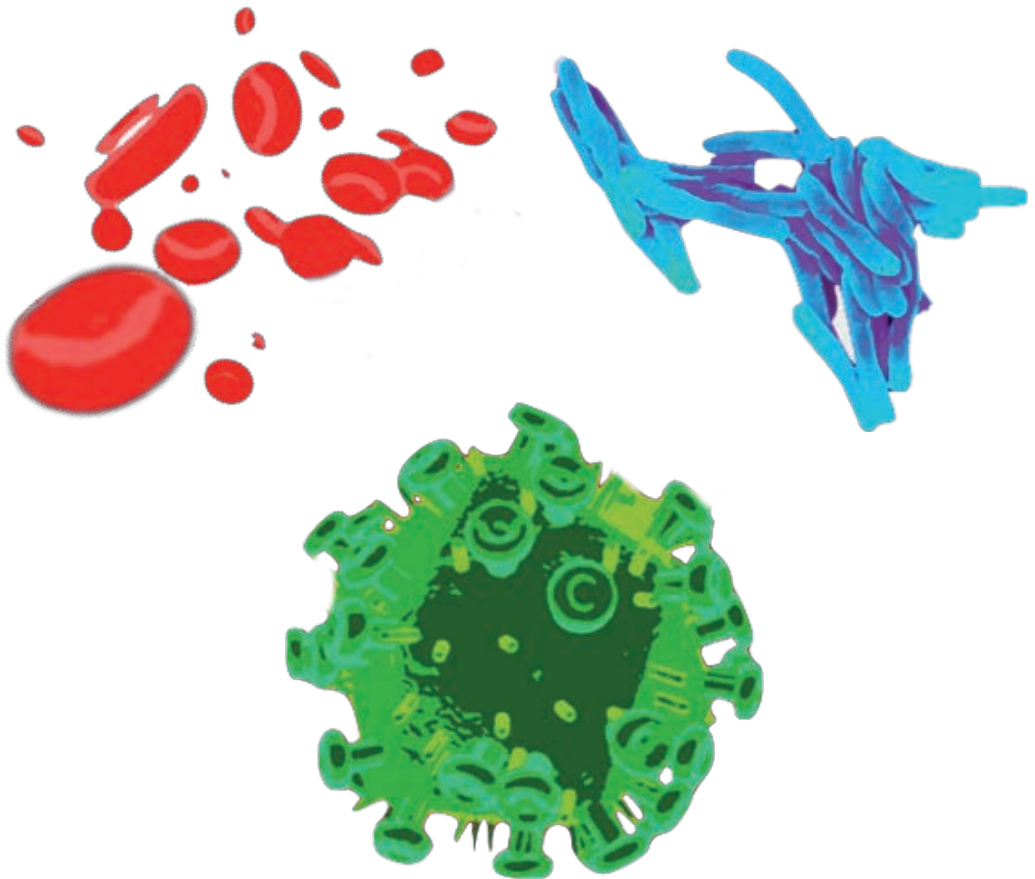
It is not permitted to download or to forward/distribute the text or part of it without the consent of the author(s) and/or copyright holder(s), other than for strictly personal, individual use, unless the work is under an open content license (like Creative Commons).

Disclaimer/Complaints regulations

If you believe that digital publication of certain material infringes any of your rights or (privacy) interests, please let the Library know, stating your reasons. In case of a legitimate complaint, the Library will make the material inaccessible and/or remove it from the website. Please Ask the Library: <https://uba.uva.nl/en/contact>, or a letter to: Library of the University of Amsterdam, Secretariat, Singel 425, 1012 WP Amsterdam, The Netherlands. You will be contacted as soon as possible.

Anaemia in Patients with HIV-associated tuberculosis in South Africa:

Predictive/prognostic value, aetiologies and treatment



Andrew D. Kerkhoff

Anaemia in Patients with HIV-associated tuberculosis in South Africa:

Predictive/prognostic value, aetiologies and treatment

Andrew D. Kerkhoff

“Anaemia in Patients with HIV-associated tuberculosis in South Africa:
predictive/prognostic value, aetiologies and treatment”

Thesis, University of Amsterdam (UvA), The Netherlands

<http://dare.uva.nl/dissertaties>

The studies included in this thesis were supported by the Wellcome Trust (London, UK).
The printing of this thesis was financially supported by the Academisch Medisch
Centrum and the Amsterdam Institute for Global Health and Development
(Amsterdam, The Netherlands).

Cover design and layout: Andrew D. Kerkhoff

Printing: Ipskamp Printing, Enschede

Copyright © 2016, Andrew D. Kerkhoff, San Francisco, USA

No part of this thesis may be reproduced, stored or transmitted in any form or by any
means, without prior permission of the author.

ISBN: 978-94-028-0125-5

**Anaemia in Patients with HIV-associated tuberculosis in South Africa:
predictive/prognostic value, aetiologies and treatment**

ACADEMISCH PROEFSCHRIFT

ter verkrijging van de graad van doctor

aan de Universiteit van Amsterdam

op gezag van de Rector Magnificus

prof. dr. D.C. van den Boom

ten overstaan van een door het College voor Promoties ingestelde commissie,

in het openbaar te verdedigen in de Agnietenkapel

op dinsdag 21 juni 2016, te 12:00 uur

door

Andrew Dale Kerkhoff

geboren te Nebraska, Verenigde Staten

Promotiecommissie:

Promotor: Prof. dr. F.G.J. Cobelens Universiteit van Amsterdam
Dr. S.D. Lawn London School of Hygiene & Tropical Medicine

Overige leden: Dr. R. van Crevel Radboud Universiteit Nijmegen
Prof. dr. M.P. Grobusch Universiteit van Amsterdam
Prof. dr. P. Reiss Universiteit van Amsterdam
Prof. dr. M. Boele van Hensbroek Universiteit van Amsterdam
Dr. F.C.M. van Leth Universiteit van Amsterdam
Prof. dr. R. Colebunders Universiteit Antwerpen

Faculteit der Geneeskunde

**Talent is universal;
opportunity is not.**

Table of Contents

Abbreviations	8
Part I: Introduction	11
Chapter 1: Introduction	13
Part II: The predictive value of anaemia for HIV-associated tuberculosis and/or mortality and means of rapid tuberculosis diagnosis	29
Chapter 2: Predictive value of anaemia for tuberculosis in HIV-infected patients in sub-Saharan Africa: an indication for routine microbiological investigation using new rapid assays	31
Chapter 3: Time-updated haemoglobin concentrations have high predictive value for incident tuberculosis and mortality during long-term antiretroviral therapy in South Africa	41
Part III: The aetiologies of anaemia in patients with HIV-associated tuberculosis	57
Chapter 4: Relationship between blood concentrations of hepcidin and anaemia severity, mycobacterial burden and mortality in patients with HIV-associated tuberculosis	59
Chapter 5: Anaemia in patients with HIV-associated TB: relative contributions of anaemia of chronic disease and iron deficiency	71
Part IV: Therapeutic interventions for anaemia in patients with HIV-associated tuberculosis	83
Chapter 6: Anaemia, blood transfusion requirements and mortality risk in HIV-infected adults requiring acute medical admission to hospital in South Africa	85
Chapter 7: Resolution of anaemia among HIV-infected patients with a high prevalence and incidence of tuberculosis receiving antiretroviral therapy	97
Chapter 8: Iron replacement therapy and anaemia associated with chronic infectious diseases in sub-Saharan Africa	111
Part V: Discussion and summary	115
Chapter 9: Discussion	117
Chapter 10: Summary	145
Chapter 11: Addendum	151
Samenvatting	153
Acknowledgements	157
About the author	160
Publications	161
PhD Portfolio	164

Abbreviations

3TC – lamivudine

ACD – anaemia of chronic disease

ACTG – AIDS Clinical Trials Group

AFB – acid-fast bacilli

AIDS – acquired immunodeficiency syndrome

ART – antiretroviral therapy

AZT – zidovudine

CD4 – cluster of differentiation 4 cell

CI – confidence interval

CRP – C-reactive protein

CSF – cerebrospinal fluid

d4t – stavudine

DOTS – direct observed treatment

EFV – efavirenz

eGFR – estimated glomerular filtration rate

ELISA – enzyme-linked immunosorbent assay

FNA – fine needle aspiration

Hb – haemoglobin

HIV – human immunodeficiency virus

HR – hazard ratio

IDA – iron deficiency anaemia

IFN- γ – interferon gamma

IL – interleukin

IPT – isoniazid preventive therapy

IRIS – immune reconstitution inflammatory syndrome

IRR – incident rate ratio

IQR – interquartile range

LAM – lipoarabinomannan

LTFU – loss to follow-up
MCH – mean corpuscular haemoglobin
MCHC – mean corpuscular haemoglobin concentration
MCV – mean corpuscular volume
MGIT – mycobacterial growth indicator tube
MOD – major organ dysfunction
NCD – non-communicable disease
NHLS – National Health Lab Service
NPV – negative predictive value
OR – odds ratio
PCR – polymerase chain reaction
PLWH – people living with HIV
PPV – positive predictive value
PY – person year
RCC – red blood cell concentrate
RDW – red cell distribution width
sTfR – soluble transferrin receptor
sTfRi – soluble transferrin receptor index
TB – tuberculosis
Tf – transferrin
TNF- α – tumor necrosis factor alpha
UNAIDS – The Joint United Nations Programme on HIV/AIDS
WBC – white blood cell
WHO – World Health Organization