

## ORIGINAL ARTICLE

# Analysis of genomic aberrations and gene expression profiling identifies novel lesions and pathways in myeloproliferative neoplasms

KL Rice<sup>1</sup>, X Lin<sup>1</sup>, K Wolniak<sup>1</sup>, BL Ebert<sup>2</sup>, W Berkofsky-Fessler<sup>3</sup>, M Buzzai<sup>4</sup>, Y Sun<sup>5</sup>, C Xi<sup>5</sup>, P Elkin<sup>5</sup>, R Levine<sup>6</sup>, T Golub<sup>7</sup>, DG Gilliland<sup>8</sup>, JD Crispino<sup>1</sup>, JD Licht<sup>1</sup> and W Zhang<sup>5</sup>

<sup>1</sup>Division of Hematology/Oncology, Department of Medicine, Northwestern University Feinberg School of Medicine, Chicago, IL, USA; <sup>2</sup>Division of Hematology, Department of Medicine, Brigham and Women's Hospital, Boston, MA, USA; <sup>3</sup>Translational Research Sciences, Hoffmann-La Roche, Inc., Nutley, NJ, USA; <sup>4</sup>Oncology, Novartis, Origgio, VA, Italy; <sup>5</sup>Division of Hematology/Oncology, Department of Medicine, Center of Biomedical Informatics, Mount Sinai School of Medicine, New York, NY, USA; <sup>6</sup>Human Oncology and Pathogenesis Program and Leukemia Service, Department of Medicine, Memorial Sloan Kettering Cancer Center, New York, NY, USA; <sup>7</sup>The Eli and Edythe L. Broad Institute of Massachusetts Institute of Technology and Harvard University, Cambridge, MA, USA and <sup>8</sup>Oncology, Merck Research Laboratories, North Wales, PA, USA

**Polycythemia vera (PV), essential thrombocythemia and primary myelofibrosis, are myeloproliferative neoplasms (MPNs) with distinct clinical features and are associated with the JAK2V617F mutation. To identify genomic anomalies involved in the pathogenesis of these disorders, we profiled 87 MPN patients using Affymetrix 250K single-nucleotide polymorphism (SNP) arrays. Aberrations affecting chr9 were the most frequently observed and included 9pLOH ( $n=16$ ), trisomy 9 ( $n=6$ ) and amplifications of 9p13.3–23.3 ( $n=1$ ), 9q33.1–34.13 ( $n=1$ ) and 9q34.13 ( $n=6$ ). Patients with trisomy 9 were associated with elevated JAK2V617F mutant allele burden, suggesting that gain of chr9 represents an alternative mechanism for increasing JAK2V617F dosage. Gene expression profiling of patients with and without chr9 abnormalities (+9, 9pLOH), identified genes potentially involved in disease pathogenesis including *JAK2*, *STAT5B* and *MAPK14*. We also observed recurrent gains of 1p36.31–36.33 ( $n=6$ ), 17q21.2–q21.31 ( $n=5$ ) and 17q25.1–25.3 ( $n=5$ ) and deletions affecting 18p11.31–11.32 ( $n=8$ ). Combined SNP and gene expression analysis identified aberrations affecting components of a non-canonical PRC2 complex (*EZH1*, *SUZ12* and *JARID2*) and genes comprising a 'HSC signature' (*MLLT3*, *SMARCA2* and *PBX1*). We show that *NFIB*, which is amplified in 7/87 MPN patients and upregulated in PV CD34+ cells, protects cells from apoptosis induced by cytokine withdrawal.**

*Blood Cancer Journal* (2011) 1, e40; doi:10.1038/bcj.2011.39; published online 11 November 2011

**Keywords:** myeloproliferative neoplasms; JAK2V617F; NFIB; SNP

## Introduction

The Ph-negative myeloproliferative neoplasms (MPNs) including polycythemia vera (PV), essential thrombocythemia (ET) and primary myelofibrosis (PMF) are clonal hematopoietic disorders characterized by the overproduction of blood cells belonging to the myeloid, megakaryocytic and/or erythroid lineages.<sup>1</sup> Although clinically distinct, these diseases are characterized

by a recurrent mutation, JAK2V617F, which is present in ~95% of patients with PV, ~65% with PMF and ~55% with ET.<sup>2</sup> JAK2 is one member of the Janus family of non-receptor tyrosine kinases that transduces signals downstream of type I and II cytokine receptors via signal transducer and activators of transcription (STATs), and is an important regulator of cell survival, proliferation, differentiation and apoptosis.<sup>3,4</sup> The JAK2V617F mutation leads to autophosphorylation of JAK2 and constitutive activation of downstream pathways including the Janus kinase (JAK)/STAT, phosphatidylinositol 3 kinase/AKT (v-akt murine thymoma viral oncogene homolog 1) and mitogen-activated protein kinase (MAPK)/extracellular signal-regulated kinase pathways.<sup>5–9</sup> Although overexpression of JAK2V617F in a murine bone marrow transplant models leads to a PV-like disease and megakaryocytic hyperplasia, such mice do not develop thrombocytosis and questions regarding the effect of allele dosage on disease phenotype remain unanswered. The finding of Theodorides *et al.*<sup>10</sup> that 70% of JAK2V617F-positive MPN patients went on to develop JAK2V617F-negative acute myeloid leukemia (AML), suggests that additional predisposing factors may precede the JAK2 mutation. Recently, several acquired inactivating mutations in *TET2*,<sup>11</sup> *ASXL1*<sup>(ref. 12)</sup> and *IDH1/2*<sup>(ref. 13)</sup> in MPN progenitors were identified, and it is likely that additional genes are involved in the initiation of a pre-leukemic clone or as disease modifiers, in co-operation with JAK2V617F.

Previous studies using standard karyotyping revealed abnormalities in 50% of PMF patients, 15% of PV and <5% of ET patients.<sup>14–16</sup> Although such conventional chromosome analysis has proven useful for diagnosis and prognostic information in PMF patients and other myeloid malignancies, the sensitivity of these approaches is limited. Indeed, studies by Tefferi using comparative genomic hybridization (CGH) oligonucleotide arrays to identify genomic aberrations in a panel of MPN patients, detected copy number aberrations (CNAs) in 29% and 18% of patients with PV and ET, respectively, while cytogenetics for these patients appeared normal.<sup>17</sup> Recently, high-resolution single-nucleotide polymorphism (SNP) arrays have emerged as a powerful, high-throughput technology to allow detection of micro-deletions and duplications and inference of loss of heterozygosity (LOH) from genotype calls, in cases where conventional cytogenetic technologies and array CGH are unsuccessful. Since then, SNP arrays have been successfully used to identify cryptic oncogenic deletions and duplications affecting putative oncogenes and tumor suppressors in various hematological malignancies. For example, the identification of

Correspondence: Dr W Zhang, Division of Hematology/Oncology, Department of Medicine, Center of Biomedical Informatics of Mount Sinai School of Medicine, Mount Sinai School of Medicine, One Gustave L Levy Place, New York, NY 10029, USA.

E-mail: Weijia.zhang@mssm.edu

or Professor JD Licht, Division of Hematology/Oncology, Department of Medicine, Robert H Lurie Comprehensive Cancer Center, Northwestern University Feinberg School of Medicine, 303 East Superior Street, Lurie 5-123, Chicago, IL 60611, USA.

E-mail: j-licht@northwestern.edu

Received 16 June 2011; accepted 11 August 2011

abnormalities on chromosome 4q24 affecting the *TET2* gene in patients with MDS, MPN and AML was facilitated by use of SNP array analysis.<sup>11,18</sup> Similarly, *PAX5* was identified as a target for mutation in B-cell acute lymphocytic leukemia using SNP arrays.<sup>19</sup> Recent studies using high-resolution SNP arrays identified novel, recurrent aberrations in a large cohort of MPN patients and revealed associations between specific chromosomal anomalies and disease progression.<sup>20</sup>

Here, we report an integrative analysis of chromosomal abnormalities and gene expression changes in MPN patients. We profiled CNAs in peripheral blood granulocytes of 87 patients with MPN and identify new regions affected by recurrent chromosomal aberrations. In a subset of the profiled patients, genomic copy number changes could be correlated with gene expression in granulocytes, leading to the identification of novel genes deregulated in MPN. We show that patients affected by chromosome 9 abnormalities, which represent the most frequent CNA, are characterized by deregulation of set of genes including *JAK2*, *STAT5B* and *MAPK14*, suggesting that these genes may be involved in disease pathogenesis. We also performed meta-analysis of five independent MPN expression data sets to identify genes commonly deregulated in MPN. Comparison of genes identified in these meta-analysis with those affected by CNAs, revealed genes that may have important roles in disease pathogenesis including *EZH1*, *MLL3*, *SOCS3* and *SMARCA2*. Finally, we show that the transcription factor NFIB, which is located adjacent to *JAK2* and upregulated in our MPN meta-analysis, leads to increased net cell growth and decreased apoptosis in the murine hematopoietic cell line, Ba/F3-EPOR.

## Patients and methods

### Patient samples

A total of 87 MPN patients (32 PV, 24 PMF and 31 ET) were included in this study (Supplementary Table S1). Samples were obtained with informed consent at the Dana-Farber Cancer Institute as described previously.<sup>8</sup>

### SNP arrays

DNA was extracted from peripheral blood granulocytes using the QIAamp DNA Blood Maxi Kit (Qiagen, Valencia, CA, USA) and analyzed with GeneChip Mapping 250K arrays according to the manufacturer's protocol (Affymetrix, Santa Clara, CA, USA).<sup>11</sup> Briefly, 250 ng of genomic DNA was digested by Nsp restriction enzymes and ligated with the appropriate adaptor for amplification with Platinum Pfx DNA polymerase (Invitrogen, Carlsbad, CA, USA). Three 100  $\mu$ l PCR reactions were carried out for each adaptor-ligated DNA sample. PCR products were pooled and purified. In all, 40  $\mu$ g of PCR product was fragmented with DNase I and visualized on a 4% TBE agarose gel. Fragmented PCR products were subsequently end-labeled with biotin. Hybridization and washing was performed using the Affymetrix Fluidics Station 450 and Gene chip and chips were scanned on an Affymetrix GeneChip Scanner G7 (Affymetrix).

### *JAK2V617F* allele burden analysis

The *JAK2V617F* allele status was assessed using a quantitative reverse transcriptase-PCR assay as previously described.<sup>21</sup> In brief, a standard curve for the proportion of *JAK2V617F*/total *JAK2* against the dCT ( $Ct_{JAK2V617F} - Ct_{JAK2WT}$ ) was generated using DNA from a healthy control and a PV erythroid colony homozygous for the *JAK2V617F* mutation. This method was

then used to determine the *JAK2V617F* allele burden (%) in DNA extracted from individual patient granulocytes.

### Data analysis

**CNA analysis.** These data were processed and analyzed using a custom developed procedure (Supplementary Figure S1). Genotype calls were generated by GTYPE (Affymetrix) from CEL files and 250K library files for Nsp arrays. Raw data were normalized using invariant set normalization method. The intensity value for each SNP was extracted using a model-based perfect match/mismatch algorithm in dChip (<http://biosun1.harvard.edu/complab/dchip/>). The  $\log_2$  ratio of the intensity for each SNP for each sample relative to data from 60 unrelated CEU subjects of HapMap project (<http://www.hapmap.org>) was calculated. The circular binary segment algorithm implemented in BioConductor DNACopy package (<http://bioconductor.org>) was applied to the  $\log_2$  ratio data to segment the chromosome into contiguous regions of equal copy number based on a maximal *t*-statistics with the use of a permutation reference distribution (using coordinates of the SNP based on Genome Build HG-17).<sup>22</sup> Segmental value was calculated by averaging copy number change values for the SNPs residing in that segment. The baseline value of genome-wide segments in the sample with a bias in regional changes (in case of the samples with more regional gains than losses, or vice versa or with only regional gains or losses) may be shifted because of the preceding steps of global normalization and median centering. To correct the baseline, the segmental values were adjusted by subtracting the median of segmental change values for all the SNPs. Considering a large segment with low-level copy number change as important as a small segment with high-level change, the adjusted segmental change value was further weighted by multiplying  $\log_{10}$  of the length of that segment. A segment in the MPN sample was considered significant if its segmental value is  $>3$  s.d. of segmental values in a range of  $Q1 - 3*(Q2 - Q1)$  to  $Q2 + 3*(Q2 - Q1)$  where  $Q1$  or  $Q2$  are the 25% or 75% percentile of segmental values in all the samples, respectively. The significant segments having an overlap of  $>75\%$  with CNA regions in normal subjects reported in the Database of Genomic Variations (<http://projects.tcag.ca/variation/>) were filtered out for further analysis. The frequencies of copy number changes in either direction for significant segments among MPN samples were summarized for each disease using the boundary information of significant segments. To assess the significance of genomic aberrations in a group of samples, the permutation was performed to assess the frequency of genomic aberrations occurring in the genome by a random chance. The genome and aberrant regions were fragmented into 50 kb blocks and the fragmented blocks for each sample were randomly assigned to any block in the genome. The frequency of aberrations occurring in every block in the genome at random was calculated and compared with the actual frequency of aberrations. These steps were repeated 1000 times. If the random chance of obtaining a proportion higher than actual frequency of genomic aberrations for a given region is  $<5\%$  (equivalently to 50 times from 1000 permutations), the recurrent aberration for a region was determined to be significant. The Fisher's exact test was performed to examine whether a particular chromosomal aberration was associated with *JAK2* mutation status or disease type. To determine if the genomic instability profiles were segregated by disease type, hierarchical clustering of genome-wide copy number change profiles was performed in PV, ET and PMF patients using the distance of Pearson correlation co-efficiencies.

**LOH analysis.** LOH analysis was performed comparing MPN genotypes with 60 CEU unrelated normal controls derived from the HapMap project (<http://www.hapmap.org>). A Hidden Markov-based algorithm was used to infer LOH from unpaired samples implemented dChip.<sup>23</sup> The regions with a minimum of 80% probability of LOH call were identified for each sample and LOH regions for MPN and HapMap normal samples were then summarized and compared.

#### RNA extraction and microarray

Total mRNA was extracted from peripheral blood granulocytes of 38 selected MPN patients and 11 normal control patients using Trizol (Invitrogen). In all, 10 µg was hybridized to HGU133A V2 arrays (Affymetrix). Data were analyzed using Genespring 11.0.2 (Agilent Technologies Inc., Santa Clara, CA, USA) following RMA normalization and genes with a fold change of  $\geq 1.5$  ( $P < 0.05$ ) were considered statistically significant. For MPN meta-analysis, a one-sided *t*-test ( $P < 0.05$ ) was performed between disease and control samples for data sets 1, 2, 3 and 5 (PV data set 1: CD34+ cells from 10 PV and 9 normal controls,<sup>24</sup> PMF data set 2: CD34+ cells from 3 PMF and 3 normal controls,<sup>25</sup> ET data set 3: platelets from 6 ET and 5 normal controls,<sup>26</sup> ET data set 4: CD34+ derived megakaryocyte cells from 2 ET and 2 normal controls,<sup>27</sup> MPN data set 5: granulocytes from 93 MPN patients and 11 normal controls, unpublished data, includes 38 MPN patients described above). For data set 4, an average of log ratios of two samples ( $\geq 2$ -fold) was used due to limited sample size. Genes deregulated in the same direction (average of  $\geq 1.5$ -fold and present in at least 3/5 data sets) were considered significant. For analysis of gene expression between patients with chromosome 9 aberrations and normal chromosome 9 cytogenetics, a one-sided *t*-test was performed and genes with a fold change  $\geq 1.5$  ( $P < 0.05$ ) were considered significant.

#### Bioinformatic analysis

Gene biofunctions and network analysis was performed using Ingenuity Pathway Analysis (Ingenuity Systems, Redwood City, CA, USA).

#### Cell culture

293T cells were grown in Dulbecco's modified Eagle's medium containing 10% (v/v) fetal bovine serum (FBS), 50 U/ml penicillin and 50 µg/ml streptomycin. Ba/F3 cells expressing the murine erythropoietin receptor (Ba/F3-EPOR) were previously described<sup>28</sup> and cultured in RPMI containing 10% (v/v) FBS supplemented with recombinant erythropoietin hEPO (1 U/ml) (Cell Sciences, Canton, MA, USA). HEL cells were grown in RPMI containing 10% (v/v) FBS. TF-1 cells were cultured in RPMI containing 10% (v/v) FBS supplemented with human granulocyte-macrophage colony-stimulating factor (2 ng/ml) (Peprotech, Rocky Hill, NJ, USA). UKE-1 cells (Gift of Gabi Vohwinkel, University Hospital Eppendorf, Hamburg, Germany) were grown in Iscove's modification of Dulbecco's medium containing 10% (v/v) FBS, 10% (v/v) horse serum and hydrocortisone ( $10^{-6}$  M) (Sigma-Aldrich, St Louis, MO, USA). For JAK2 inhibition studies, HEL and UKE-1 cells were treated with either JAK inhibitor I (Calbiochem, Gibbstown, NJ, USA) or NVP-BSK805 Inhibitor (1–2 µM) (Novartis, Schaumburg, IL, USA), respectively, for 16 h, using dimethylsulphoxide as a control.

#### Viral constructs and transduction

Full-length human *NFIB* complementary DNA (cDNA) was obtained from Open Biosystems (Huntsville, AL, USA) and cloned into the two promoter EF1 $\alpha$ -cytomegalovirus-green fluorescent protein (GFP) lentiviral vector (Gift of Dr Linzhao Cheng, John Hopkins). Full-length human *JAK2WT* and *JAK2V617F* cDNA was subcloned from the MSCV-Neo/Puro retroviral vector<sup>8</sup> into the two promoter A2-GFP lentiviral vector. Viral particles were produced by transient transfection of 293T cells with pRSV-REV (Rous sarcoma virus-REV), pMDLg/pRRE (gag/pol elements) and pMD.G (envelope elements) plasmids with Fugene6:DNA (Roche, Mannheim, Germany). After 24 h, transfection reagent was removed and replaced with RPMI and incubated at 32 °C for 48 h. Supernatants were pooled and filtered through a 0.45 µm syringe filter for immediate use. For transduction of Ba/F3-EPOR or TF-1 cells,  $2 \times 10^6$  cells were pelleted and resuspended in 2 ml of lentivirus with polybrene (4 µg/ml) and spinoculated at  $1010 \times g$  for 2 h at 25 °C. Infected cells were then cultured for 48 h and the percentage of GFP was determined by flow cytometry.

#### cDNA preparation and quantitative reverse transcriptase-PCR

cDNA was synthesized from 1 µg of total RNA using Iscript cDNA Synthesis Kit (Bio-Rad, Hercules, CA, USA). Quantitative reverse transcriptase-PCR reactions were performed using Quantitect SYBR Green PCR Kit (Qiagen) using the Mx3000P Real-Time PCR System (Stratagene, Agilent Technologies, La Jolla, CA, USA). Quantitect primers (Qiagen) used for quantitative quantitative reverse transcriptase-PCR are located in Supplementary Table S2.

#### Cytokine withdrawal

Sorted GFP+ Ba/F3-EPOR cells were cultured in RPMI plus erythropoietin (EPO) (1 U/ml) and cumulative cell growth counts were performed over 10 days by Trypan blue exclusion. For EPO withdrawal studies, cells were washed three times in phosphate-buffered saline and seeded at  $1 \times 10^5$  cells/ml with varying concentrations of EPO (1, 0.1 and 0.01 U/ml) for 2 days. The percentage of dead cells was calculated by Trypan blue exclusion.

## Results

#### Identification of novel MPN-associated disease genes using a combination of SNP and gene expression profiling

To identify genes recurrently affected by genomic aberrations in MPN, we hybridized DNA from peripheral blood granulocytes of 87 MPN patients (32 PV, 24 PMF and 31 ET) to Affymetrix 250K SNP arrays. Analysis of genomic profiles for CNAs and copy neutral LOH/uniparental disomy confirmed previously reported chromosomal abnormalities in MPN, including recurrent gain of 1q ( $n = 4$ ), trisomy 8 ( $n = 2$ ), 9pLOH ( $n = 16$ ), trisomy 9 ( $n = 6$ ) and deletions in 20q11.21–13.13 ( $n = 4$ )<sup>20,29</sup> (Figure 1a; Supplementary Table S1). We also found that several genes mutated in MPN were also affected by genomic aberrations in our cohort. For example, analysis of the *TET2* gene, which is mutated in  $\sim 12\%$  of patients with MPN,<sup>11</sup> revealed small deletions at chr4q24 affecting *TET2* in two PV patients (Supplementary Figure S1). We also observed loss of 20q11.21–q13.12 in one PV (s328) and one PMF patient (s212),





**Table 1** SNP arrays identify regions of recurrent gain or loss in MPN patients

Chr	Ab	Start	End	Dist (kb)	Freq	COSMIC database	MPN vs control (> 1.5-fold, P<0.05)	MPN meta-analysis (> 1.5-fold, P<0.05)
1	Gain	1p36.33	1p36.31	4338	6/87	PRDM16	LRRC47	—
1	Gain	1q32.1	1q44	45 208	4/87	ELK4, MDM4, SLC45A3	ADSS, ANGEL2, ARF1, ARID4B, BTG2, CNIH4, FAIM3, FBXO28, HEATR1, LGALS8, NUAK2, PFKFB2, RAB3GAP2, RCOR3, TOMM20, TRAF3IP3, TSNAX, ZC3H11A	AKT3, GALNT2, LGALS8, MTR, PSEN2, RAB3GAP2, RPS6KC1, SMYD2
8	Gain	8p23.1	8p23.1	428	4/87	—	—	—
9	Gain	9p24.3	9p23	10 489	6/87*	JAK2	JAK2, SMARCA2	JAK2, SMARCA2
9	Gain	9p23	9p13.3	16 366	7/87*	CDKN2A, MLLT3, NFIB	—	ADFP, MLLT3, NFIB
9	Gain	9p13.3	9q33.1	83 625	6/87*	FANCC, FANCG, GNAQ, NR4A3, OMD, PAX5, PTCH, SYK, TAL2 XPA	AGTPBP1, ANXA1, CTNNAL1, DCTN3, DDX58 KLF4, NDUFB6, NOL8 NR4A3, SMU1, SPTLC1 T DRD7, TLN1	ABCA1, CDC14B, DAPK1 DDX58, KIAA0367, NTRK2, TMOD1, TPM2, TXNDC4
9	Gain	9q33.1	9q34.13	10 771	7/87*	CEP1	CDK5RAP2, FBXW2, GAPVD1, GOLGA1, PBX3 POLE3, PRPF4, PTGS1, RABGAP1, STOM	PTGS1, RABGAP1
9	Gain	9q34.13	9q34.13	1097	10/87*	—	—	ANGPTL2
9	Gain	9q34.13	9q34.13	11 137	12/87*	ABL1, BRD3, FNBP1, NOTCH1, NUP214, SETTSC1	ASB6, CDK9, GPR107, LCN2, RALGDS SET, SPTAN1, SSNA1	—
12	Gain	12p13.33	12p13.33	1008	4/87	—	—	—
15	Loss	15q15.3	15q15.3	172	7/87	—	—	—
17	Gain	17q21.2	17q21.31	3984	5/87	BRCA1, ETV4	ATP6V0A1, EZH1, FMNL1 HEXIM1, ITGA2B, MAP3K14, PSME3	EZH1, ITGA2B
17	Gain	17q25.1	17q25.3	9770	5/87	ASPSR1, CANT1	GGA3, MAFG, SEC14L1, SGSH, SLC16A3 ST6GALNAC2,WBP2	BAIAP2, EXOC7, SEC14L1 SOCS3
18	Loss	18p11.32	18p11.31	813	8/87	—	—	—
20	Loss	20q11.23	20q13.12	9917	4/87	MAFB, TOP1	BLCAP, BPI, CTNBL1, MMP9, SFRS6	C20orf67, EYA2, HNF4A L3MBTL, SRC, TGM2, UBE2C
20	Gain	20q13.33	20q13.33	3353	4/87	SS18L1	LIME1, PCMTD2, RPS21	DATF1

Abbreviations: CNA, copy number aberration; COSMIC, Catalogue of Somatic Mutations in Cancer; ET, essential thrombocythemia; MPN, myeloproliferative neoplasm; PMF, primary myelofibrosis; PV, polycythemia vera; SNP, single-nucleotide polymorphism.

Frequently occurring CNAs identified using 250K SNP Array Analysis in MPN patients ( $n = 87$ ). Asterisks indicate that these frequencies include six cases of whole chromosome 9 gain. Genes affected by CNA, somatic mutations in cancer (COSMIC) and gene expression analysis (MPN vs normal; genes deregulated in peripheral blood granulocytes from 37/87 MPN patients (10 PV, 17 ET and 10 PMF) compared with 11 normal controls ( $\geq 1.5$ -fold,  $P < 0.05$ ; Supplementary Table S4) and meta-analysis of five MPN array data sets (one-sided  $t$ -test,  $P < 0.05$ , average of 1.5-fold in 3/5 data sets; Supplementary Table S6) are shown in the far right columns.

a region including the *ASXL1* gene, which was recently shown to be mutated in ~11% of myelodysplastic syndromes (MDS) and in ~7% of patients with MPN ET and PMF,<sup>30</sup> gain of ch11q23.3 encompassing *CBL* in one ET patient (s403) and loss of chr7q35 harboring *EZH2* in one PMF patient (s212) (Supplementary Table S1).

Overall, our analysis identified CNAs in 88% of MPN patients, (77/87), however, the majority (~90%) of recurrent aberrations occurred at a frequency of <5%. The most frequent abnormalities involved chromosome 9, including 9pLOH ( $n = 16$ ) as well as gains of whole chromosome 9 ( $n = 6$ ) and partial amplifications including 9p13.3–23.3 ( $n = 1$ ), 9q33.1–34.13 ( $n = 1$ ) and 9q34.13 ( $n = 6$ ). Recurrent gains of 1p36.31–36.33 ( $n = 6$ ), 17q21.2–q21.31 ( $n = 5$ ), 17q25.1–25.3 ( $n = 5$ ) and deletions of 18p11.31–11.32 ( $n = 8$ ) and 15q15.3 ( $n = 7$ ) were also observed (Table 1). In addition to these larger aberrations, a subset of CNAs identified in our screen involved smaller regions of recurrent gain or loss, typically containing <10 genes. We hypothesized that these areas may contain putative oncogenes or tumor suppressors, as in the case of the *TET2* tumor suppressor. Such candidates include *FLI1* and *ETS1*, located in a 754–841-kb region of loss (3/87), *TCBA1* located in a 600-bp region of loss (3/87) and *CNTNAP2* located in a 35-kb region of loss (2/87) (Supplementary Table S1).

In order to further investigate the disease potential of these genomic gains and losses, we compared genes affected by CNAs in our MPN cohort ( $\geq 2$  patients; 4448 genes) (Supplementary Table S3) with genes deregulated in peripheral blood granulocytes from a subset of these patients ( $n = 37$ , 10 PV, 17 ET and 10 PMF, Supplementary Table S1) compared with normal controls ( $n = 11$ ) ( $\geq 1.5$ -fold,  $P < 0.05$ ; 1447 genes, Supplementary Table S4) and cancer-associated genes obtained from the Catalogue of Somatic Mutations in Cancer (COSMIC) (426 genes) (Supplementary Figure S2). Of the 426 COSMIC genes, 75 were affected by CNAs and 42 were deregulated in expression (Supplementary Table S5). Nine genes fulfilled all criteria and these included *JAK2* and *Translocated Promoter Region*, which were both affected by copy number gains and overexpressed in MPN patients compared with normal controls. Using this tri-level analysis, we identified aberrations affecting components of a non-canonical PRC2 complex including upregulation of *SUZ12* (1.8-fold,  $P < 0.05$ ), amplification and upregulation of *EZH1* (5/87; 1.6-fold,  $P < 0.05$ ) and amplification of *JARID2* (2/87) (Figure 1b). Several genes constituting part of a HSC ‘gene signature’<sup>31</sup> were also identified in our analysis, including *MLLT3* and *SMARCA2*, amplified as a result of trisomy 9 in six patients and *PBX1* amplified in three patients on chr1q22–1q25.3, strengthening the hypothesis

**Table 2** MPN-associated pathways

Pathway	P-value	Genes	Aberration	Fold change
JAK/STAT signaling	$3.4 \times 10^{-4}$	AKT3	Gain (3/87)	1.8
		JAK2	Gain (6/87)	1.9
		SOCS3	Gain (6/87)	1.9
		JAK3	Gain (2/87)	1.5
IL-8 signaling	$4.4 \times 10^{-4}$	AKT3	Gain (3/87)	1.8
		ANGPT1	Gain (2/87)	2.8
		AZU1	Gain (3/87)	1.5
		IKBKB	Gain (2/87)	1.6
		PTK2B	Gain (2/87)	1.8
		SRC	Loss (4/87)	-1.6
Erythropoietin signaling	$5.5 \times 10^{-4}$	AKT3	Gain (3/87)	1.8
		JAK2	Gain (6/87)	1.9
		SOCS3	Gain (6/87)	1.9
		SRC	Loss (4/87)	-1.6

Abbreviations: IL, interleukin; JAK, Janus kinase; MPN, myeloproliferative neoplasm; SNP, single-nucleotide polymorphism; SOCS, suppressor of cytokine signaling; STAT, signal transducer and activators of transcription.

Ingenuity pathway analysis was performed using genes commonly identified by SNP array ( $n=87$ ) and MPN meta-analysis ( $n=114$ ) (89 genes).

that aberrant self-renewal may underlie a common MPN progenitor (Table 1).

Finally, we compared genes affected by CNAs with those deregulated in a comprehensive MPN meta-analysis. Analysis of five individual MPN data sets comparing patient and normal control samples identified 574 upregulated genes and 636 downregulated genes. Comparison of this data set with genes affected by genomic aberrations in our MPN patient cohort (CNAs present in  $\geq 2$  patients), identified 81 upregulated genes in regions of chromosome gain and 20 downregulated genes in regions of loss (Supplementary Table S6). Ingenuity pathway analysis of these genes revealed an enrichment of genes belonging to various signaling pathways including the JAK/STAT, interleukin-8 and erythropoietin pathways, reinforcing the role of dysregulated JAK/STAT signaling in MPN (Table 2). Furthermore, genes previously implicated in hematological disease such as *PBX1*, *PDE4C*, *PTGS1* and *SRC* as well as in cell growth and proliferation and apoptosis were also enriched (Table 3). Taken together, these data indicate that genomic aberrations present in MPN account for a proportion of gene expression changes, which may have a role in disease pathogenesis.

### Aberrations involving chromosome 9 are associated with dysregulated gene expression

Previous studies show that wild-type JAK2 can exert a dominant-negative effect over mutant JAK2V617F, suggesting that there may be a selective advantage for elevating the ratio of JAK2V617F/JAK2WT.<sup>32</sup> We observed that the majority of patients with a high JAK2V617F allele burden ( $> 85\%$  JAK2V617F) exhibit chr9pLOH (86%; 12/14), confirming previous studies that JAK2V617F mutant allele status can be increased through LOH because of mitotic recombination<sup>8</sup> (Supplementary Table S1). We also found that the majority of patients with trisomy 9 had an elevated JAK2V617F allele burden (average 67%), consistent with duplication of the mutant allele.

As trisomy 9 and 9pLOH represent the predominant CNAs in MPN, we used gene expression profiling to investigate the differences between patients with normal ( $n=25$ ) versus abnormal chromosome 9 cytogenetics ( $n=13$ ). We identified a set of 493 genes, including 210 upregulated and 283

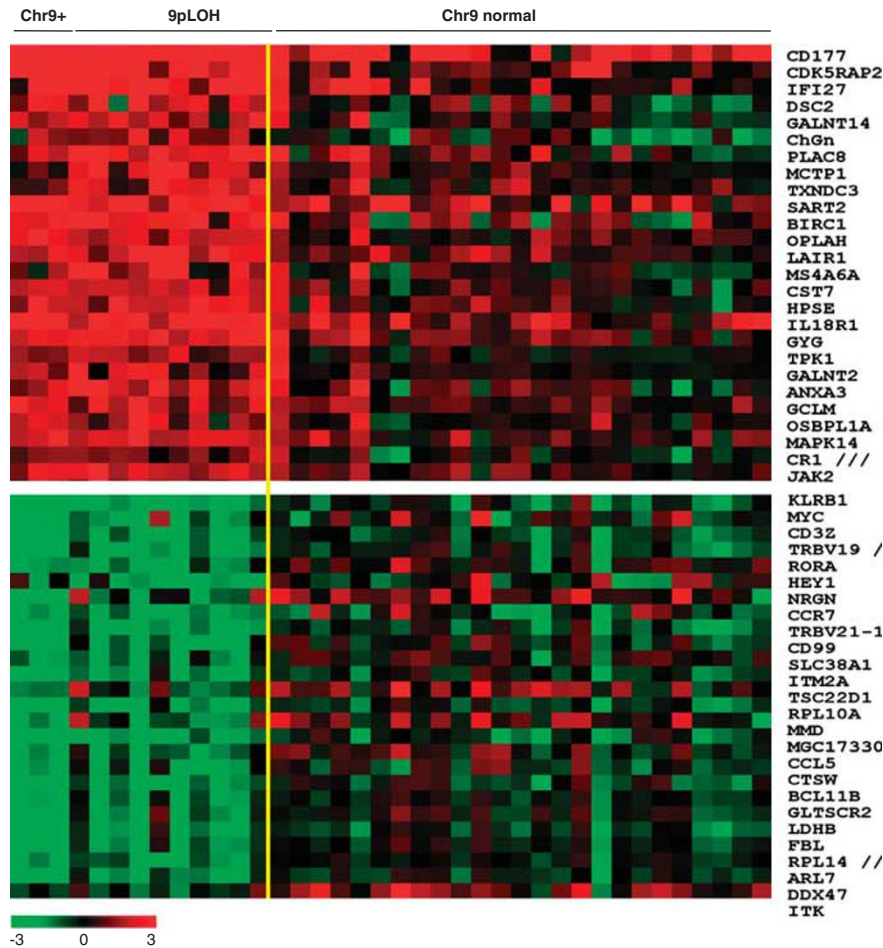
**Table 3** MPN-associated bio-functions

Functions	P-value	Genes	Aberration	Fold change
<i>Hematological disease</i> ( $4.7 \times 10^{-5}$ – $1.2 \times 10^{-2}$ )				
Erythrocytosis	$7.6 \times 10^{-4}$	JAK2	Gain (6/87)	1.9
		SOCS3	Gain (6/87)	1.9
		SRC	Loss (4/87)	-1.6
Leukemia	$1.7 \times 10^{-3}$	AKT3	Gain (3/87)	1.8
		JAK2	Gain (6/87)	1.9
		JAK3	Gain (2/87)	1.5
		MTR	Gain (3/87)	1.9
		PBX1	Gain (3/87)	1.7
		PDE4C	Gain (2/87)	2.7
		PTGS1	Gain (7/87)	2.1
		SRC	Loss (4/87)	-1.6
<i>Cell growth and proliferation</i> ( $1.5 \times 10^{-5}$ – $1.2 \times 10^{-2}$ )				
Colony formation	$9.2 \times 10^{-4}$	IFI16	Gain (3/87)	1.7
		UBE2C	Loss (3/87)	-1.9
		CLU	Gain (2/87)	2.0
		ELF3	Gain (3/87)	1.6
		JAK2	Gain (6/87)	1.9
		LAPTM4B	Gain (2/87)	2.0
		PDLIM2	Gain (2/87)	2.8
		SRC	Gain (4/87)	-1.6
Proliferation of cells	$1.3 \times 10^{-3}$	AKT3	Gain (3/87)	1.8
		ANGPT1	Gain (2/87)	2.8
		BLZF1	Gain (3/87)	1.6
		CD244	Gain (3/87)	2.2
		HRPT2	Gain (3/87)	2.2
		CLU	Gain (2/87)	2.0
		CTSB	Gain (2/87)	2.7
		ELF3	Gain (3/87)	1.6
		ENPP2	Gain (2/87)	1.5
		HNF4A	Loss (3/87)	-1.8
		HPGD	Gain (2/87)	2
		IFI16	Gain (3/87)	1.7
		IKBKB	Gain (2/87)	1.6
		ITGA2B	Gain (5/87)	2.3
		JAK2	Gain (6/87)	1.9
		JAK3	Gain (2/87)	1.5
		MAPRE	Loss (2/87)	-1.5
NFIB	Gain (7/87)	2.3		
PBX1	Gain (3/87)	1.7		
SMARCA2	Gain (6/87)	2		
SOCS3	Gain (6/87)	1.9		
SRC	Loss (4/87)	-1.6		
TGM2	Loss (4/87)	-3.3		
UBE2C	Loss (3/87)	-1.9		
<i>Cell death</i> ( $2.5 \times 10^{-6}$ – $1.3 \times 10^{-2}$ )				
Apoptosis	$3.2 \times 10^{-4}$	ANGPT1	Gain (2/87)	2.8
		CLU	Gain (2/87)	2.0
		DAPK1	Gain (6/87)	1.8
		DNAJB9	Loss (2/87)	-1.6
		IKBKB	Gain (2/87)	1.6
		PTK2B	Gain (2/87)	1.8
		SOCS3	Gain (5/87)	1.9

Abbreviations: IL, interleukin; JAK, Janus kinase; MPN, myeloproliferative neoplasm; SNP, single-nucleotide polymorphism; SOCS, suppressor of cytokine signaling.

Ingenuity pathway analysis was performed using genes commonly identified by SNP array analysis ( $n=87$ ) and meta-analysis ( $n=114$ ) (89 genes).

downregulated genes that were differentially expressed between these two groups ( $\geq 1.5$ -fold,  $P < 0.05$ ) (Supplementary Table S7). Among those genes upregulated in patients with chromosome 9 aberrations, were *JAK2*, *STAT5B*, *MAPK14* and *CD177* (Figure 2).



**Figure 2** Chromosome 9 aberrations are associated with elevated JAK2V617F allele burden and gene expression signature. Gene expression differences in patients with normal ( $n=25$ ) versus abnormal (+9, 9pLOH) chromosome 9 cytogenetics ( $n=13$ ) (Supplementary Table S7). A subset of genes upregulated (>2.7-fold,  $P<0.05$ ; 26 genes) or downregulated (>3-fold,  $P<0.05$ ; 26 genes) in patients with chromosome 9 anomalies compared with normal chromosome 9 cytogenetics are displayed in a heatmap.

*PMF and ET patients display higher frequencies of chromosomal aberrations compared with PV*

Although PV, ET and PMF patients may all harbor the JAK2V617F allele, their clinical manifestations differ. This may be at least in part explained by the gene dosage hypothesis, which is based on the observation that homozygous JAK2V617F mutant erythroid colonies are found in the majority of patients with PV but rarely in ET patients.<sup>33</sup> This suggests that higher kinase activity (JAK2V617F homozygosity) gives rise to an erythroid/PV phenotype, whereas lower kinase activity (JAK2V617F heterozygosity) leads to an ET phenotype. In support of this model, we observed that JAK2V617F homozygosity was associated with PV (64%; 9/14) and PMF (36%; 5/14) but not ET patients (Supplementary Table S1).

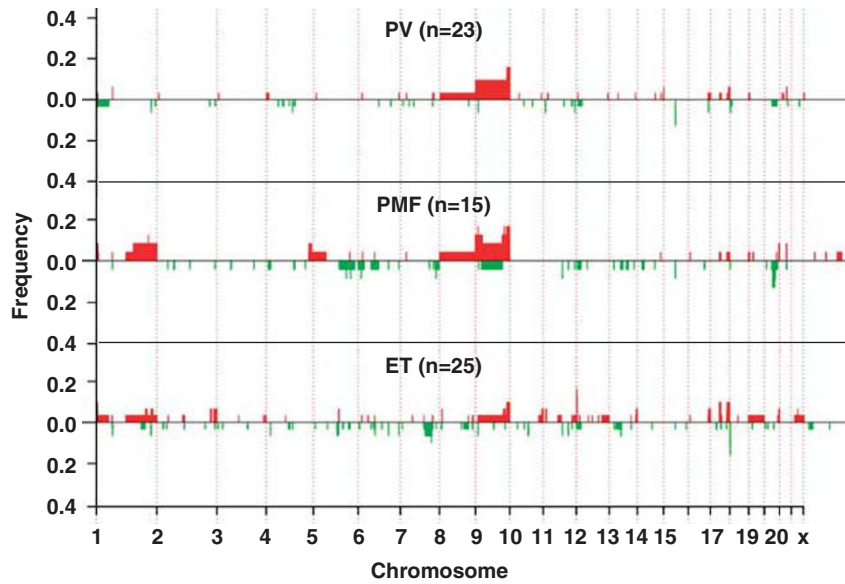
In addition to the role of JAK2V617F allele dosage, we hypothesized that specific genomic aberrations may have a role in disease phenotype. To test this, we performed unsupervised hierarchical clustering of SNP profiles for MPN patients heterozygous (allele burden range 1–85%) for the JAK2V617F allele ( $n=63$ ) (Supplementary Figure S3). Although genomic instability profiles of these MPN samples did not segregate according to disease subtype, we found that PMF patients were more likely to have large (>10Mb) chromosomal aberrations compared with ET or PV patients ( $P=0.009$ ) (Figure 3). In addition, ET and PMF patients had

more moderate sized (1–10 Mb) chromosomal aberrations than PV patients ( $P=0.01$ ).

*NFIB overexpression is associated with chromosome 9 amplification and protects hematopoietic cells from cytokine withdrawal-induced apoptosis*

Accumulating evidence suggests that additional genetic lesions cooperate with JAK2V617F to induce MPN. We identified *NFIB* as a gene upregulated in our MPN meta-analysis, which includes a recently published data set of CD34+ cells of PV patients compared with normal CD34+ specimens.<sup>24</sup> In our SNP array study, we show that *NFIB*, which lies 9.1MB centromeric to the *JAK2* locus, is amplified as a result of trisomy 9 in 6/87 MPN patients and gain of 9p23–13.3 in 1/87 MPN patients. *NFIB* expression was not significantly changed following JAK2 inhibition in HEL cells and modestly upregulated following JAK2 inhibition in UKE-1 cells, which are both homozygous for the JAK2V617F mutant allele. *NFIB* expression was not altered by overexpression of either WT or mutant JAK2 in TF-1 cells, which express wild-type JAK2 (Supplementary Figure S4). In contrast, PIM1 was modulated in response to JAK2 inhibition or overexpression in keeping with its positive regulation by JAK/STAT signaling. Taken together, these data





	PV	PMF	ET	P value
Whole Chromosomal Aberrations/person	0.2	0.2	0.04	0.4
Regions (>10Mb)/person	0.5	2.1	0.8	0.009
Regions (1-10Mb)/person	0.6	1.8	2.0	0.01
Regions (<1Mb)/person	2.4	3.5	3.8	0.4

**Figure 3** PMF and ET patients display higher frequencies of chromosomal aberrations compared with PV. Frequency plots of chromosomal gains (red) or loss (green) in individuals with PV ( $n=23$ ), PMF ( $n=15$ ) and ET ( $n=25$ ). Y axis represents the frequency of copy number change in each patient subgroup. T-test was used to identify significant differences in the frequency of chromosomal aberrations between these three patient subtypes.

suggest that aberrant JAK2 signaling does not account for the upregulation of *NFIB* in MPN.

To explore the putative oncogenic potential of *NFIB*, we utilized the erythropoietin-dependent Ba/F3-EPOR murine hematopoietic cell line. Stable overexpression of *NFIB* in Ba/F3-EPOR cells protected cells apoptosis induced by EPO withdrawal (Figure 4a) Furthermore, *NFIB*-infected Ba/F3-EPOR cells displayed a modest, but consistent increase in cell number compared with vector ( $P<0.02$ , Figure 4b). Taken together, these data suggest that ectopic *NFIB* expression may cooperate with aberrant JAK2 signaling to dysregulate normal hematopoiesis.

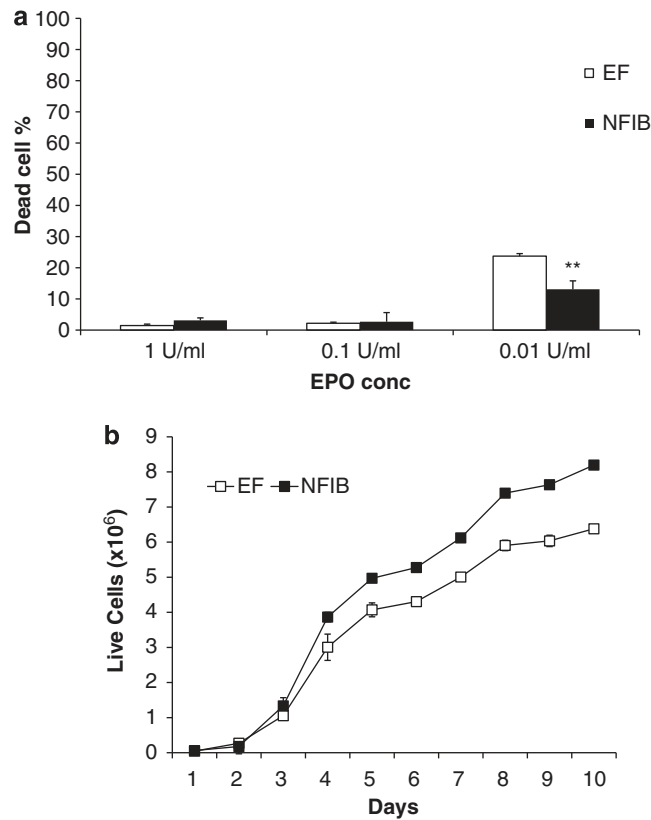
## Discussion

The recent use of genome-wide methods to interrogate copy number alterations and gene expression changes in hematologic malignancies has been critical to our understanding of the mechanisms underlying these heterogeneous diseases. In this study, we employed a combination of high-density SNP arrays and gene expression arrays to identify novel oncogenic lesions and dysregulated pathways in a cohort of 87 MPN patients. In addition to identifying copy number variations affecting genes *TET2*, *ASXL1*, *EZH2* and *CBL*, which have previously been reported in MPN,<sup>34</sup> we identified new MPN-associated aberrations, which may have a role in disease initiation and/or progression.

The most frequent aberrations observed in our patient cohort involved gains of whole chromosome 9 or 9pLOH, suggesting that genes on this chromosome may provide a selective clonal advantage. Previous studies have shown that wild-type JAK2 is capable of inhibiting STAT5 activation induced by mutant JAK2V617F.<sup>6</sup> This inhibition is presumably due to competition between the two JAK2 forms for cytokine receptor binding because wild-type JAK2 does not affect autophosphorylation of JAK2V617F.<sup>8</sup> Since JAK2 is present on chromosome 9, we hypothesized that gain of chromosome 9 may provide an alternative mechanism for cells to acquire an extra copy of mutant JAK2. In support of this, we observed that a majority of patients trisomy 9 were associated with high JAK2V617F allele burden, suggesting that JAK2 was mutated in this extra chromosome 9. Although the presence of other disease-associated genes on chromosome 9 may also contribute to the pathogenesis of MPN, these data support the hypothesis that acquisition of an additional JAK2V617F mutant allele, either by 9pLOH or trisomy 9, confers a selective, competitive edge.

The finding that *JAK2* and *STAT5B* are significantly upregulated in patients with trisomy 9 and 9pLOH, which are comprised largely of PV patients (57%), reinforces the role of aberrant JAK/STAT signaling in this disease subtype. *MAPK14* (also known as p38 $\alpha$ ), which is also upregulated in patients with chromosome 9 abnormalities, is a kinase that lies downstream of JAK2, and is activated in response to pro-inflammatory stimuli and hematopoietic growth factors. Recent studies reveal a role





**Figure 4** NFIB protects cells from cytokine withdrawal-induced cell death and promotes cell growth (a). Baf3/EPOR cells transduced with control (EF) or EF-NFIB lentivirus for 48 h and GFP+ cells were replated in RPMI with 1 U/ml, 0.1 U/ml and 0.01 U/ml EPO for 48 h. Cell viability was determined by Trypan blue exclusion (b). Cumulative cell counts were performed over 10 days. Data are expressed as the average of three independent experiments  $\pm$  s.e.m. (\*\* $P < 0.05$ ).

for MAPK14 in red blood cell production, since mice lacking *MAPK14* are anemic due to failed definitive erythropoiesis.<sup>35</sup> Given the association of high-level JAK2V617F expression with a PV-like phenotype in murine models of MPN,<sup>36</sup> it is tempting to speculate that aberrant expression of *MAPK14* in patients with two copies of JAK2V617F may activate an erythroid differentiation pathway, contributing to the development of PV.

In addition to gaining extra copies of JAK2V617F, modulation of JAK2 kinase activity may also have a role in disease progression. The suppressor of cytokine signaling (SOCS) proteins are negative regulators of cytokine signaling and are expressed after cytokine stimulation, directly interacting with JAK/STAT pathway members to modulate the responsiveness of cells to further signaling.<sup>37</sup> Although it is postulated that SOCS proteins are tumor suppressors, there is also evidence to suggest that overexpression of SOCS may favor tumor progression. Persistent expression of *SOCS3* is observed in AML and coincides with constitutive activation of JAK-STAT pathways.<sup>38</sup> Interestingly, our study identified *SOCS3* within a region of chromosomal gain on chromosome 17 in 6/87 patients and *SOCS3* was also upregulated  $\sim$ 2-fold in our meta-analysis. Although *SOCS3* is a potent negative regulator of erythropoietin signaling through the EPO receptor and wild-type JAK2, a study by Hookham *et al.*,<sup>39</sup> revealed that *SOCS3* is unable to negatively regulate mutant JAK2V617F and in contrast, enhanced the proliferation of Ba/F3 cells in the presence of EPOR. Furthermore, *SOCS3* degradation was inhibited by JAK2V617F and this correlated with *SOCS3* tyrosine phosphorylation, a feature also observed in the PBMC of patients

homozygous for JAK2V617F. Indeed, we found that all patients harboring a gain of chromosome 17q leading to amplification of *SOCS3*, had intermediate JAK2V617F allele burden (average 55.4%), supporting a model in which overexpression of *SOCS3* may cooperate with JAK2V617F to enhance myeloproliferation.

Although aberrant JAK2 signaling is clearly a recurrent theme in MPN, it is likely that other JAK2V617F-independent events contribute to disease pathogenesis. Recent studies have identified several disease-associated mutations such as *TET2* and *ASXL1* that may initiate a premalignant clone, since they appear to precede the *JAK2V617F* mutation.<sup>2,11</sup> In this study, we show that *NFIB*, which we previously reported to be overexpressed in CD34+ cells from nine PV patients compared with normal controls, is amplified in six patients via gains of whole chromosome 9 and in one patient by gain of region 9p23–13.3. Previous studies reporting overexpression of *NFIB* in a small subset of PV patients (two with 9pLOH and two without), hypothesized that this was a consequence of 9pLOH.<sup>40</sup> It was later shown, however, that *NFIB* was overexpressed in eight MPN patients positive for endogenous erythroid colony formation, however, none of these patients had 9pLOH.<sup>41</sup> Although the ectopic *NFIB* expression may be a consequence of trisomy 9, it is also possible that *NFIB* may be upregulated by other factors at the level of gene transcription. Indeed, we observed that only two genes present in the 9pLOH region, *JAK2* and *C9orf46*, which encodes a transmembrane protein with unknown function, were upregulated in these patients compared with patients with normal chromosome 9 cytogenetics. *NFIB* encodes a CAAT box-binding transcription

factor and previous studies showed that overexpression in 32D cells increases resistance to TGF- $\beta$ 1 inhibition.<sup>40</sup> *NFIB* expression was not positively regulated by JAK2 in cell lines, however, overexpression in Ba/F3-EPOR cells conferred a modest growth advantage, and impaired apoptosis induced by EPO withdrawal. The role of the related *NFIA* gene in erythropoiesis is well established, and a recent study revealed structural alterations in *NFIA* in 2% of chronic myeloid diseases, theoretically leading to inactivation of the protein.<sup>42</sup> The functional role of *NFIB* in normal and malignant hematopoiesis remains unknown. Preliminary experiments suggest that *NFIB* is expressed at low levels in human CD34+ cells, however, expression is upregulated during normal megakaryocyte differentiation (data not shown). Future studies will seek to understand the effect of *NFIB* overexpression on normal hematopoiesis and in the context of the JAK2V617F overexpression.

In addition to *NFIB*, overlap of genes identified by our SNP array and MPN meta-analysis identified several other potentially interesting disease candidates. For example, *MLL3* and *SMARCA2*, both of which are located on chromosome 9 and upregulated in MPN patients, were identified as part of a gene set expressed by 'normal' quiescent HSCs.<sup>31</sup> *MLL3* is a positive regulator of erythroid and megakaryocyte differentiation during normal hematopoiesis<sup>43</sup> and is also implicated in leukemogenesis, as a translocation fusion partner of *MLL* in AML.<sup>44</sup> *EZH1*, which is located in a region of chromosome gain (17q21.1–21.31) in 5/87 patients and is upregulated in the MPN meta-analysis, is an H3K27 methyltransferase that forms part of a non-canonical PRC2 complex and has a role in preserving H3K27me3, preventing derepression of PRC2 targets involved in ESC pluripotency.<sup>45</sup> Recent studies identified loss of function mutations in *EZH2* in MDS and MPN, suggesting a tumor-suppressor activity. Although the functional consequences of *EZH1* overexpression in MPN remains to be elucidated, these studies highlight an emerging theme in myeloid malignancies involving the dysregulation of genes involved in epigenetic regulation, such as *ASXL1*, *UTX*, *SETD2*, *JARID1C* and *TET2*.

Recent studies have demonstrated that JAK2V617F may affect genomic stability by displacing HP1 $\alpha$  from chromatin<sup>46</sup> and by deregulating DNA double-strand break repair mechanisms.<sup>47</sup> Plo *et al.*<sup>47</sup> showed that overexpression of JAK2V617F and to a lesser extent wild-type JAK2 in Ba/F3-EPOR cells, led to an increase in spontaneous homologous recombination and RAD51 nuclear foci formation. JAK2V617F expression was associated with genetic instability, as assessed by the higher occurrence of centrosome abnormalities and sister chromatid exchange. Furthermore, increased homologous recombination and RAD51 formation was observed in patient CD34+ cells from JAK2V617F-positive PV and PMF patients.<sup>47</sup> In support of these studies, we observed significantly more genomic aberrations in patients with intermediate JAK2V617F allele burden (1–85%) compared with patients with wild-type JAK2 (<1% JAK2V617F) (data not shown). Unexpectedly, however, patients with high JAK2V617F allele burden (>85%) displayed fewer aberrations. The ability of mutant JAK2 to induce hyper-recombination is thought to facilitate mitotic recombination that may lead to LOH and account for disease heterogeneity.<sup>47</sup> Whether genomic instability induced by JAK2V617F facilitates leukemic transformation, however, remains contentious. For example, in a study of 17 patients with JAK2V617F-positive MPN that later transformed to AML, 9 patients went on to develop JAK2V617F-negative AML.<sup>10</sup> Furthermore, a recent study by Thoensin *et al.*,<sup>48</sup> found no significant association between JAK2V617F mutation status and time to leukemic

transformation in patients with MPN-blast phase, suggesting the existence of a pre-JAK2V617F clone.

Although unsupervised clustering of PV, ET and PMF patients did not reveal distinct aberration patterns associated with these MPN subtypes, we noted that PMF patients displayed more chromosomal aberrations than PV or ET patients. These observations are consistent with other studies showing that patients with PMF exhibit increased copy number changes and abnormal cytogenetics compared with PV or ET.<sup>17</sup> The consequences of this increased genomic instability remains unclear, however, a recent study investigating the chromosomal abnormalities of patients with leukemic transformation of MPN, revealed that time from diagnosis to leukemic transformation was shorter for PMF than ET or PV patients.<sup>48</sup> Further analysis on a larger cohort may help us determine the aberrations associated with a specific MPN subtype.

In conclusion, we have used a combination of high-resolution SNP arrays and gene expression arrays to identify novel potential disease candidates that may have a role in MPN. Future studies will seek to address the specific contribution of aberrated genes and signaling pathways identified in this study to the development of MPN.

### Conflict of interest

The authors declare no conflict of interest.

### Acknowledgements

We thank David Ronald, director of Genotyping Facility at Albert Einstein College of Medicine, and Greg Khitrov, director of Life Science Technology Laboratory of Department of Medicine at Mount Sinai School of Medicine for carrying out Affymetrix SNP array experiments. We also thank Dr Weiguang Zhang (Duke U). Supported by NIH Grant: R01 HL082950.

### References

- Delhommeau F, Jeziorowska D, Marzac C, Casadevall N. Molecular aspects of myeloproliferative neoplasms. *Int J Hematol* 2010; **91**: 165–173.
- Tefferi A. Novel mutations and their functional and clinical relevance in myeloproliferative neoplasms: JAK2, MPL, TET2, ASXL1, CBL, IDH and IKZF1. *Leukemia* 2010; **24**: 1128–1138.
- Ihle JN, Gilliland DG. Jak2: normal function and role in hematopoietic disorders. *Curr Opin Genet Dev* 2007; **17**: 8–14.
- Liu KD, Gaffen SL, Goldsmith MA. JAK/STAT signaling by cytokine receptors. *Curr Opin Immunol* 1998; **10**: 271–278.
- Morgan KJ, Gilliland DG. A role for JAK2 mutations in myeloproliferative diseases. *Annu Rev Med* 2008; **59**: 213–222.
- James C, Ugo V, Le Couedic JP, Staerk J, Delhommeau F, Lacout C *et al.* A unique clonal JAK2 mutation leading to constitutive signalling causes polycythaemia vera. *Nature* 2005; **434**: 1144–1148.
- Kralovics R, Teo SS, Buser AS, Brutsche M, Tiedt R, Tichelli A *et al.* Altered gene expression in myeloproliferative disorders correlates with activation of signaling by the V617F mutation of Jak2. *Blood* 2005; **106**: 3374–3376.
- Levine RL, Wadleigh M, Cools J, Ebert BL, Wernig G, Huntly BJ *et al.* Activating mutation in the tyrosine kinase JAK2 in polycythemia vera, essential thrombocythemia, and myeloid metaplasia with myelofibrosis. *Cancer Cell* 2005; **7**: 387–397.
- Zhao R, Xing S, Li Z, Fu X, Li Q, Krantz SB *et al.* Identification of an acquired JAK2 mutation in polycythemia vera. *J Biol Chem* 2005; **280**: 22788–22792.
- Theocharides A, Boissinot M, Girodon F, Garand R, Teo SS, Lippert E *et al.* Leukemic blasts in transformed JAK2-V617F-

- positive myeloproliferative disorders are frequently negative for the JAK2-V617F mutation. *Blood* 2007; **110**: 375–379.
- 11 Delhommeau F, Dupont S, Della Valle V, James C, Trannoy S, Masse A et al. Mutation in TET2 in myeloid cancers. *N Engl J Med* 2009; **360**: 2289–2301.
  - 12 Gelsi-Boyer V, Trouplin V, Adelaide J, Bonansea J, Cervera N, Carbuccia N et al. Mutations of polycomb-associated gene ASXL1 in myelodysplastic syndromes and chronic myelomonocytic leukaemia. *Br J Haematol* 2009; **145**: 788–800.
  - 13 Green A, Beer P. Somatic mutations of IDH1 and IDH2 in the leukemic transformation of myeloproliferative neoplasms. *N Engl J Med* 2010; **362**: 369–370.
  - 14 Tefferi A, Mesa RA, Schroeder G, Hanson CA, Li CY, Dewald GW. Cytogenetic findings and their clinical relevance in myelofibrosis with myeloid metaplasia. *Br J Haematol* 2001; **113**: 763–771.
  - 15 Steensma DP, Tefferi A. Cytogenetic and molecular genetic aspects of essential thrombocythemia. *Acta Haematol* 2002; **108**: 55–65.
  - 16 Gangat N, Strand J, Lasho TL, Finke CM, Knudson RA, Pardanani A et al. Cytogenetic studies at diagnosis in polycythemia vera: clinical and JAK2V617F allele burden correlates. *Eur J Haematol* 2008; **80**: 197–200.
  - 17 Tefferi A, Sirhan S, Sun Y, Lasho T, Finke CM, Weisberger J et al. Oligonucleotide array CGH studies in myeloproliferative neoplasms: comparison with JAK2V617F mutational status and conventional chromosome analysis. *Leuk Res* 2009; **33**: 662–664.
  - 18 Langemeijer SM, Kuiper RP, Berends M, Knops R, Aslanyan MG, Massop M et al. Acquired mutations in TET2 are common in myelodysplastic syndromes. *Nat Genet* 2009; **41**: 838–842.
  - 19 Mullighan CG, Goorha S, Radtke I, Miller CB, Coustan-Smith E, Dalton JD et al. Genome-wide analysis of genetic alterations in acute lymphoblastic leukaemia. *Nature* 2007; **446**: 758–764.
  - 20 Klampfl T, Harutyunyan A, Berg T, Gisslinger B, Schalling M, Bagienski K et al. Genome integrity of myeloproliferative neoplasms in chronic phase and during disease progression. *Blood* 2011; **118**: 167–176.
  - 21 Levine RL, Belisle C, Wadleigh M, Zahrieh D, Lee S, Chagnon P et al. X-inactivation-based clonality analysis and quantitative JAK2V617F assessment reveal a strong association between clonality and JAK2V617F in PV but not ET/MMM, and identifies a subset of JAK2V617F-negative ET and MMM patients with clonal hematopoiesis. *Blood* 2006; **107**: 4139–4141.
  - 22 Olshen AB, Venkatraman ES, Lucito R, Wigler M. Circular binary segmentation for the analysis of array-based DNA copy number data. *Biostatistics* 2004; **5**: 557–572.
  - 23 Beroukhi R, Lin M, Park Y, Hao K, Zhao X, Garraway LA et al. Inferring loss-of-heterozygosity from unpaired tumors using high-density oligonucleotide SNP arrays. *PLoS Comput Biol* 2006; **2**: e41.
  - 24 Berkofsky-Fessler W, Buzzaï M, Kim MK, Fruchtmann S, Najfeld V, Min DJ et al. Transcriptional profiling of polycythemia vera identifies gene expression patterns both dependent and independent from the action of JAK2V617F. *Clin Cancer Res* 2010; **16**: 4339–4352.
  - 25 Guglielmelli P, Zini R, Bogani C, Salati S, Pancrazzi A, Bianchi E et al. Molecular profiling of CD34+ cells in idiopathic myelofibrosis identifies a set of disease-associated genes and reveals the clinical significance of Wilms' tumor gene 1 (WT1). *Stem Cells* 2007; **25**: 165–173.
  - 26 Gnatenko DV, Cupit LD, Huang EC, Dhundale A, Perrotta PL, Bahou WF. Platelets express steroidogenic 17 $\beta$ -hydroxysteroid dehydrogenases. Distinct profiles predict the essential thrombocytic phenotype. *Thromb Haemost* 2005; **94**: 412–421.
  - 27 Tenedini E, Fagioli ME, Vianelli N, Tazzari PL, Ricci F, Tagliafico E et al. Gene expression profiling of normal and malignant CD34-derived megakaryocytic cells. *Blood* 2004; **104**: 3126–3135.
  - 28 D'Andrea AD, Yoshimura A, Yousoufian H, Zon LI, Koo JW, Lodish HF. The cytoplasmic region of the erythropoietin receptor contains nonoverlapping positive and negative growth-regulatory domains. *Mol Cell Biol* 1991; **11**: 1980–1987.
  - 29 Stegelmann F, Bullinger L, Griesshammer M, Holzmann K, Habdank M, Kuhn S et al. High-resolution single-nucleotide polymorphism array-profiling in myeloproliferative neoplasms identifies novel genomic aberrations. *Haematologica* 2010; **95**: 666–669.
  - 30 Carbuccia N, Murati A, Trouplin V, Breccqueville M, Adelaide J, Rey J et al. Mutations of ASXL1 gene in myeloproliferative neoplasms. *Leukemia* 2009; **23**: 2183–2186.
  - 31 Forsberg EC, Passegue E, Prohaska SS, Wagers AJ, Koeva M, Stuart JM et al. Molecular signatures of quiescent, mobilized and leukemia-initiating hematopoietic stem cells. *PLoS One* 2010; **5**: e8785.
  - 32 James C, Ugo V, Casadevall N, Constantinescu SN, Vainchenker W. A JAK2 mutation in myeloproliferative disorders: pathogenesis and therapeutic and scientific prospects. *Trends Mol Med* 2005; **11**: 546–554.
  - 33 Scott LM, Scott MA, Campbell PJ, Green AR. Progenitors homozygous for the V617F mutation occur in most patients with polycythemia vera, but not essential thrombocythemia. *Blood* 2006; **108**: 2435–2437.
  - 34 Tefferi A. Novel mutations and their functional and clinical relevance in myeloproliferative neoplasms: JAK2, MPL, TET2, ASXL1, CBL, IDH and IKZF1. *Leukemia* 2010; **24**: 1128–1138.
  - 35 Tamura K, Sudo T, Senftleben U, Dadak AM, Johnson R, Karin M. Requirement for p38alpha in erythropoietin expression: a role for stress kinases in erythropoiesis. *Cell* 2000; **102**: 221–231.
  - 36 Tiedt R, Hao-Shen H, Sobas MA, Looser R, Dirnhofer S, Schwaller J et al. Ratio of mutant JAK2-V617F to wild-type Jak2 determines the MPD phenotypes in transgenic mice. *Blood* 2008; **111**: 3931–3940.
  - 37 Croker BA, Kiu H, Nicholson SE. SOCS regulation of the JAK/STAT signalling pathway. *Semin Cell Dev Biol* 2008; **19**: 414–422.
  - 38 Schuringa JJ, Wierenga AT, Kruijer W, Vellenga E. Constitutive Stat3, Tyr705, and Ser727 phosphorylation in acute myeloid leukemia cells caused by the autocrine secretion of interleukin-6. *Blood* 2000; **95**: 3765–3770.
  - 39 Hookham MB, Elliott J, Suessmuth Y, Staerk J, Ward AC, Vainchenker W et al. The myeloproliferative disorder-associated JAK2 V617F mutant escapes negative regulation by suppressor of cytokine signaling 3. *Blood* 2007; **109**: 4924–4929.
  - 40 Kralovics R, Guan Y, Prchal JT. Acquired uniparental disomy of chromosome 9p is a frequent stem cell defect in polycythemia vera. *Exp Hematol* 2002; **30**: 229–236.
  - 41 Kralovics R, Buser AS, Teo SS, Coers J, Tichelli A, van der Maas AP et al. Comparison of molecular markers in a cohort of patients with chronic myeloproliferative disorders. *Blood* 2003; **102**: 1869–1871.
  - 42 Bernard F, Gelsi-Boyer V, Murati A, Giraudier S, Trouplin V, Adelaide J et al. Alterations of NFIA in chronic malignant myeloid diseases. *Leukemia* 2009; **23**: 583–585.
  - 43 Pina C, May G, Soneji S, Hong D, Enver T. MLLT3 regulates early human erythroid and megakaryocytic cell fate. *Cell Stem Cell* 2008; **2**: 264–273.
  - 44 Iida S, Seto M, Yamamoto K, Komatsu H, Tojo A, Asano S et al. MLLT3 gene on 9p22 involved in t(9;11) leukemia encodes a serine/proline rich protein homologous to MLLT1 on 19p13. *Oncogene* 1993; **8**: 3085–3092.
  - 45 Shen X, Liu Y, Hsu YJ, Fujiwara Y, Kim J, Mao X et al. EZH1 mediates methylation on histone H3 lysine 27 and complements EZH2 in maintaining stem cell identity and executing pluripotency. *Mol Cell* 2008; **32**: 491–502.
  - 46 Dawson MA, Bannister AJ, Gottgens B, Foster SD, Bartke T, Green AR et al. JAK2 phosphorylates histone H3Y41 and excludes HP1alpha from chromatin. *Nature* 2009; **461**: 819–822.
  - 47 Plo I, Nakatake M, Malivert L, de Villartay JP, Giraudier S, Villevall JL et al. JAK2 stimulates homologous recombination and genetic instability: potential implication in the heterogeneity of myeloproliferative disorders. *Blood* 2008; **112**: 1402–1412.
  - 48 Thoenissen NH, Krug UO, Lee DH, Kawamata N, Iwanski GB, Lasho T et al. Prevalence and prognostic impact of allelic imbalances associated with leukemic transformation of Philadelphia chromosome-negative myeloproliferative neoplasms. *Blood* 2010; **115**: 2882–2890.



This work is licensed under the Creative Commons Attribution-NonCommercial-Share Alike 3.0 Unported License. To view a copy of this license, visit <http://creativecommons.org/licenses/by-nc-sa/3.0/>