

Analyzing the Use of Concept Maps in Computer Science: A Systematic Mapping Study

Vinicius dos SANTOS¹, Érica F. de SOUZA¹,
Katia R. FELIZARDO¹, Nandamudi L. VIJAYKUMAR²

¹*Department of Computer, Federal Technological University of Paraná – UTFPR
Cornélio Procópio/PR, Brazil*

²*Laboratory of Computing and Applied Mathematics,
National Institute for Space Research – INPE
São José dos Campos/SP, Brazil*

*e-mail: viniciussantos@alunos.utfpr.edu.br, ericasouza@utfpr.edu.br,
katiascannavino@utfpr.edu.br, vijay.nl@inpe.br*

Received: May 2017

Abstract. *Context:* concept Maps (CMs) enable the creation of a schematic representation of a domain knowledge. For this reason, CMs have been applied in different research areas, including Computer Science. *Objective:* the objective of this paper is to present the results of a systematic mapping study conducted to collect and evaluate existing research on CMs initiatives in Computer Science. *Method:* the mapping study was performed by searching five electronic databases. We also performed backward snowballing and manual search to find publications of researchers and research groups that accomplished these studies. *Results:* from the mapping study, we identified 108 studies addressing CMs initiatives in different subareas of Computer Science that were reviewed to extract relevant information to answer a set of research questions. The mapping shows an increasing interest in the topic in recent years and it has been extensively investigated due to support in teaching and learning. *Conclusions:* based on our results we conclude that the use of CMs as an educational tool has been widely accepted in Computer Science.

Keywords: systematic mapping study; concept maps; knowledge representation; computer science; education tool.

1. Introduction

Managing knowledge is a key challenge for organizations and research institutions, since once knowledge is well managed, it can become a consistent intellectual component in the decision making process (O’Leary, 1998; O’Leary and Studer, 2001;

Zack and Serino, 2000). New challenges of how knowledge should be produced and transmitted have also been investigated (Correia, 2012). Among the strategies to work with knowledge, Concept Mappings (CMs) are considered an useful graphical technique for organizing, understanding and sharing knowledge (Correia, 2012; Novak and Cañas, 2008).

Originally developed by Novak and Cañas (2006) in 1972, CMs are a graphical representation of knowledge. CMs are visual representations of a particular topic and they provide support to organize and represent knowledge. CMs represent knowledge as graphs. These knowledge graphs are networks of concepts, where nodes represent concepts and links relations between them. These links contain associated words that describe the nature of the relationship between concepts (Novak and Cañas, 2008).

In summary, CMs provide a visual and holistic way to describe declarative knowledge relationships. They also provide an useful medium for sharing information in a concise and accessible form, making knowledge models based on CMs a promising vehicle for knowledge sharing (Novak and Cañas, 2008). Originally CMs are connected to the education domain (Novak *et al.*, 1984). CMs originated from the need to find how best to represent the conceptual understanding of children about science (Novak and Cañas, 2006). It is possible to understand, from a simple search for related literature, that CMs are often applied as teaching and learning strategies (Gurupur *et al.*, 2015; Jain *et al.*, 2014; Katagall *et al.*, 2015; Larraza-Mendiluze and Garay-Vitoria, 2013; Weinerth *et al.*, 2014; Wu *et al.*, 2012; Zvacek *et al.*, 2012). CMs have been applied in pedagogical context in all disciplines including politics, philosophy of science, physics, chemistry, medicine, electrical engineering and mathematics (Katagall *et al.*, 2015; Rueda *et al.*, 2009a). CMs have been used in multiple settings in education, since they are able to clarify the relationships between the subcomponents of a particular topic and they are useful to organize one's own ideas (externalization) (Correia, 2012).

Given the potential benefits of CMs, this paper aims to identify CMs initiatives in Computer Science by means of a systematic mapping study. A systematic mapping study, or simply mapping study, provides a broad overview of an area of research, to determine whether there is research evidence on a particular topic. Results of a mapping study helps identifying gaps in order to suggest areas for future research and provides a map that appropriately allows the position of new research activities (Kitchenham and Charters, 2007; Petersen *et al.*, 2015).

A mapping study presented in this paper investigates the following issues:

- (i) Purposes of applying CMs in Computer Science.
- (ii) Different subareas of Computer Science in which CMs have been applied.
- (iii) Resources used to support the development of CMs.
- (iv) Main guidelines used to evaluate CMs.
- (v) Benefits and problems reported on use of CMs in Computer Science.

The rest of this paper is organized as follows. Section 2 presents related research. Section 3 discusses the research method applied to perform the mapping study. Results are presented in Section 4. Section 5 discusses the results, their implications, and limitations. Finally, Section 6 concludes the paper and presents directions for future work.

2. Related Work

In general, secondary studies are based on analyzing research papers (referred to as primary studies). Mapping studies provide an overview of a topic area and identify whether there are subtopics where more primary studies are needed (Petersen *et al.*, 2015). In this paper we present a mapping study to identify and classify all research related to the use of CM in Computer Science. However, before accomplishing the secondary study presented in this paper, we performed a tertiary study looking for secondary studies that already investigated CMs in the same topic. Tertiary studies are considered as a review that focuses only on secondary studies, i.e., it is a review about other secondary studies (Kitchenham and Charters, 2007). In this tertiary study, we used the search string shown in Table 1.

The search string presented in Table 1 was applied in the following electronic databases: *IEEE Xplore*, *ACM Digital Library*, *Scopus*, *Science Direct* and *Compendex*. We found only one study that drew our attention (Weinerth *et al.*, 2014).

In Weinerth *et al.* (2014), a literature review with a focus on usability was conducted. Authors conducted a research review to examine whether and how researchers have studied and considered usability when conducting computer-based CM assessments. From 119 journal studies that assessed computer-based CM only 24 discussed the usability issue in some way. According to Weinerth *et al.* (2014), the impact of usability on computer-based CM assessments is an issue that has received insufficient attention.

In addition, we decided to look for secondary studies investigating CMs separately (not in the context of Computer Science). We used the search string shown in Table 2:

The same seven electronic databases previously mentioned were searched, returning 75 results. After eliminating duplications and applying the selection criteria, 19 secondary studies were returned, but, none was a secondary study on CMs. However, one study

Table 1
Keywords of the Search String of the Tertiary Study on CMs in Computer Science

| Areas | Keywords |
|-----------------------|-----------------------------------------------------------------------------------------------------------------------------------------------------------------------------------------------------------------------------------------------------------------------------------------------------------------------------------------------------------------------------------------------------|
| Concept Map | “Concept Map”, “Concept Maps”, “Conceptual Map”, “Conceptual Maps”, “Concept Mapping” |
| Computer Science | “Computer Science”, “Computation”, “Software Engineering”, “Computer Engineering”, “Computing” |
| Review | “Systematic Literature Review”, “Systematic Review”, “Systematic Mapping”, “Mapping Study”, “Mapping Studies”, “Systematic Literature Mapping”, “Literature Review” |
| <i>Search String:</i> | (“Concept Map” OR “Concept Maps” OR “Conceptual Map” OR “Conceptual Maps” OR “Concept Mapping”) AND (“Computer Science” OR “Computation” OR “Computer Engineering” OR “Software Engineering” OR “Computing”) AND (“Systematic Literature Review” OR “Systematic Review” OR “Systematic Mapping” OR “Mapping Study” OR “Mapping Studies” OR “Systematic Literature Mapping” OR “Literature Review”) |

Table 2
Keywords of the Search String of the Tertiary Study on CMs

| Areas | Keywords |
|-----------------------|---------------------------------------------------------------------------------------------------------------------------------------------------------------------------------------------------------------------------------------------------------------------------------------|
| Concept Map | “Concept Map”, “Concept Maps”, “Conceptual Map”, “Conceptual Maps”, “Concept Mapping” |
| Review | “Systematic Literature Review”, “Systematic Review”, “Systematic Mapping”, “Mapping Study”, “Mapping Studies”, “Systematic Literature Mapping”, “Literature Review” |
| <i>Search String:</i> | (“Concept Map” OR “Concept Maps” OR “Conceptual Map” OR “Conceptual Maps” OR “Concept Mapping”) AND (“Systematic Literature Review” OR “Systematic Review” OR “Systematic Mapping” OR “Mapping Study” OR “Mapping Studies” OR “Systematic Literature Mapping” OR “Literature Review”) |

attracted our attention. Rosas and Kane (2012) did not present a secondary study, but they conducted a pooled analysis of 69 CM studies to describe characteristics across study phases, generated specific indicators of validity and reliability, and examined the relationship between selected study characteristics. A majority of CM studies analyzed were classified as directed to public health (59.4%). Others were in the fields of human services (20.3%), biomedical research (5.8%), social science research (2.9%), and business or human resources (2.9%). With respect to purpose, twenty-eight (40.6%) were used for strategic planning purposes.

Based on the results from this investigation by employing tertiary studies, we can say that there is only one recent extensive literature search that focused on computer-based assessment, CMs and usability. This motivated us to conduct this study.

3. Mapping Study

As previously mentioned mapping studies build a classification scheme and organize a research field of interest within the categories of the scheme. As a result, the coverage of the research field can be determined and the scheme can also be used to answer specific research questions (Petersen *et al.*, 2015). Therefore, mapping study provides an overview of a research area by identifying and quantifying the related available research.

The research method for the mapping study presented in this paper was defined based on the guidelines given by Kitchenham and Charters (2007) and Petersen *et al.* (2015). This mapping involves three main phases:

- (i) **Planning:** refers to the pre-review activities, and aims at establishing a review protocol defining the research questions, inclusion and exclusion criteria, sources of studies, search string, and mapping procedures.
- (ii) **Conducting:** searches and selects the studies, in order to extract and synthesize data from them. The data extraction activity for a mapping study is broad and the analysis of a mapping does not include the use of in-depth analysis techniques, such as meta-analysis, but rather total amounts and summaries. Graphic representations can also be used to summarize the data.

- (iii) **Reporting:** final phase that aims at writing up the results and circulating them to potentially interested parties. In this phase the findings of the mapping study are used to answer the research questions.

Kitchenham and Charters (2007) suggest, in addition to the searches in the databases, conducting a snowballing from reference lists of selected studies, in order to identify additional relevant studies through the reference lists of the studies found using the search strings (Jalali and Wohlin, 2012). Manual searches for works developed by important researchers and research groups can also be performed (Kitchenham *et al.*, 2011). These researchers/research groups are identified from previously selected studies (retrieved by searches in the databases, as well as from snowballing). We tried using these two approaches in our mapping to overcome the limitation of using a specific set of electronic databases.

The following are the main steps we performed for the mapping study.

3.1. Research Questions

This mapping study was conducted in order to identify principles of CMs initiatives in Computer Science. Based on this goal, seven research questions (RQs) were created. Table 3 presents the RQs that this mapping study aims to answer, as well as the rationale for considering them.

Table 3
Research questions and their rationales

| No | Research question | Rationale |
|-----|----------------------------------------------------------------------------|-----------------------------------------------------------------------------------------------------------------------------------------------------------------------------------------------------------------------------------------------------------------------------------------------------------|
| RQ1 | When and where have the studies been published? | The topic of this mapping study seems to be broad and new. This research question provides an understanding on whether there are specific publication sources for these studies, and when they have been published. |
| RQ2 | What is the purpose of the application of CMs in Computer Science? | This question looks for the purposes declared in the studies for applying CMs. This is important to point out why such studies have been accomplished. |
| RQ3 | In which different subareas the application of CMs have been presented? | Investigates the different subareas of Computer Science in which CMs have been applied. |
| RQ4 | What are the main instruments used to develop the identified CMs? | Highlights the main instruments, as tools, techniques or methods, currently used to develop CMs. This is useful for researchers and practitioners that intend to accomplish new studies in this context, as well as to guide future research towards new technologies in order to fill the existing gaps. |
| RQ5 | What are the guidelines or mechanisms used to evaluate the CMs identified? | This RQ highlights guidelines or mechanisms used to evaluate the CMs. Similarly to the previous one, this is useful for researchers and practitioners to guide future research. |
| RQ6 | What are the benefits reported by authors related to the use of CMs? | Provides an overview of the main benefits reported by authors related to the main advantages in works with CMs. |
| RQ7 | What are the problems reported by authors related to the use of CMs? | Provides an overview of the main limitations reported by authors related to the main difficulties in works with CMs. |

3.2. Search Strategy and Selection

The purpose of a mapping study is to conduct a review of relevant studies to assess the quantity of evidence existing to address the RQs. The process needs to be rigorous and unbiased and it often involves a wide coverage of sources, such as online electronic databases, journals and conferences. In order to minimize bias and to maximize the number of sources examined, a pre-defined strategy to identify potential primary studies is required. Ours is described as follows.

3.2.1. Terms and Search String

First of all, we created our search string. The search string considers two areas – “Concept Map” and “Computer Science” (Table 4) – and it was applied in three metadata fields: title, abstract and keywords. The search string went through syntactic adaptations according to particularities of each source.

In order to elaborate the search string, the set of search terms were devised in an iterative way, i.e., we started with an initial set of terms and iteratively improved this set until all relevant pre-selected studies were found. The pre-selected studies are part of a control group. If the publications of the control group are not retrieved, the string needs to be calibrated (adjusted) or new databases need to be added in order to guarantee that at least these publications are retrieved. In this sense, we used a control group to calibrate the search string.

3.2.2. Sources

We chose the electronic databases based on predefined criteria, such as: (i) coverage (large number of conferences proceedings, journals, and indexed books in different knowledge areas); (ii) content update (publications are regularly updated); (iii) availability (full text of the study are available); (iv) quality of results (accuracy of the results obtained by the search); and (v) versatility export (a mechanism to export the results of the search is available). The control group, described before, also helped to define the

Table 4
Keywords of the Search String of the Mapping

| Areas | Keywords |
|-----------------------|--------------------------------------------------------------------------------------------------------------------------------------------------------------------------------------------------------------|
| Concept Map | “Concept Map”, “Concept Maps”, “Conceptual Map”, “Conceptual Maps”, “Concept Mapping” |
| Computer Science | “Computer Science”, “Computation”, “Software Engineering”, “Computer Engineering”, “Computing” |
| <i>Search String:</i> | (“Concept Map” OR “Concept Maps” OR “Conceptual Map” OR “Conceptual Maps” OR “Concept Mapping”) AND (“Computer Science” OR “Computation” OR “Software Engineering” OR “Computer Engineering” OR “Computing”) |

databases. The most commonly used databases in Computer Science area that meet to the characteristics described above are:

IEEE Xplore (<http://ieeexplore.ieee.org>)

ACM Digital Library (<http://dl.acm.org>)

ScienceDirect (<http://www.sciencedirect.com/>)

Scopus (<http://www.scopus.com/>)

Compedex (<http://www.engineeringvillage2.org>)

As a result of searching from the search string defined and the selected sources, a total of 700 publications were returned. We considered the studies published until June 2016.

3.3. Selection Process

The selection criteria are organized in one Inclusion Criterion (IC) and seven Exclusion Criteria (EC). The following inclusion criteria were applied:

(IC1) The study must be within the Computer Science and discuss the CMs initiative.

(EC1) The study does not have an abstract.

(EC2) The study is just published as an abstract.

(EC3) The study is not written in English.

(EC4) The study is an older version of other study already considered.

(EC5) The study is not a primary study, such as editorials, summaries of keynotes, workshops, and tutorials.

(EC6) The study is not in the scope of Computer Science, although it uses CMs initiatives.

(EC7) The study is in Computer Science context, however, does not use CMs initiatives.

The selection process was divided into five stages, as shown in Fig. 1.

In the 1st stage duplicated studies were eliminated, resulting in 367 publications (reducing approximately 47.6%).

In the 2nd stage, the selection criteria (inclusion and exclusion criteria) were applied for title, abstract and keywords, leading to 158 studies (reducing approximately 56.9%).

In the 3rd stage, the selection criteria were applied considering the full text, resulting in a set of 93 studies (reducing approximately 41.1%). Over these 93 studies considered relevant, we performed backward snowballing, which resulted in 251 studies. From these 251 studies, the selection criteria were applied considering the title, abstract and keywords. Next, the selection criteria were applied considering the full text. A total of 37 studies were resulted from this stage.

Finally, from 130 studies selected until then (93 from sources and 37 from snowballing), we looked for publications authored by the researchers and research groups involved in these studies. We searched for their personal pages as well as other publications authored by them in electronic databases that we used as sources for this mapping.

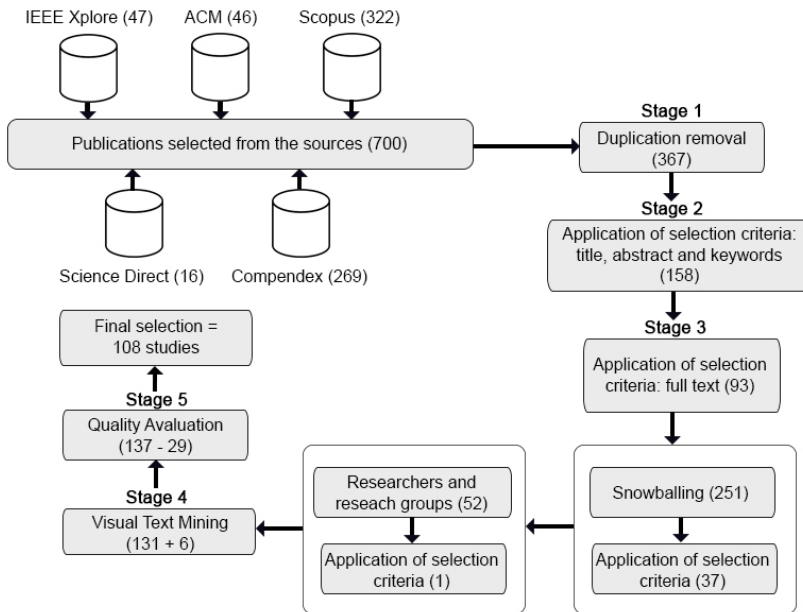


Fig. 1. Search and selection mapping process.

A total of 52 studies were selected. After the selection criteria were applied, only 1 study remained. As a result, we got to 131 studies (93 from the sources, 37 from snowballing, and 1 from direct search to researchers and research groups).

In the 4th stage, we applied Visual Text Mining (VTM) techniques in order to ensure that relevant studies were not eliminated (Felizardo *et al.*, 2012). One VTM technique is to create a content map, i.e., a two-dimensional (2D) visual representation, where each document (i.e., a primary study) is graphically represented as an element on the plane, shown graphically as a circle. Positions of the studies in the map reflect the similarity relationships between their content (title and abstract). Therefore, if the studies are more similar (exhibiting content similarity) they are shown closer to one another; conversely, more dissimilar, further apart they are in the graph.

In summary, the strategy suggested by Felizardo *et al.* (2012) to review the studies' selection activity is to analyze the content map in terms of the included and excluded studies to find inconsistencies, i.e., studies with similar content (meaning that they are positioned close together on the map) with different classifications: included and excluded. These cases are hints to the reviewer, and the studies should be reviewed following the traditional method, i.e. reading the full text. Fig. 2 shows the clustering generated from the 131 studies. For example, the study highlighted with an arrow (see Cluster 7 in Fig. 2) was reviewed and its classification was changed from excluded to included. This same procedure was adopted for all clusters. In total, 6 studies initially excluded were included after the review, totaling 137 studies.

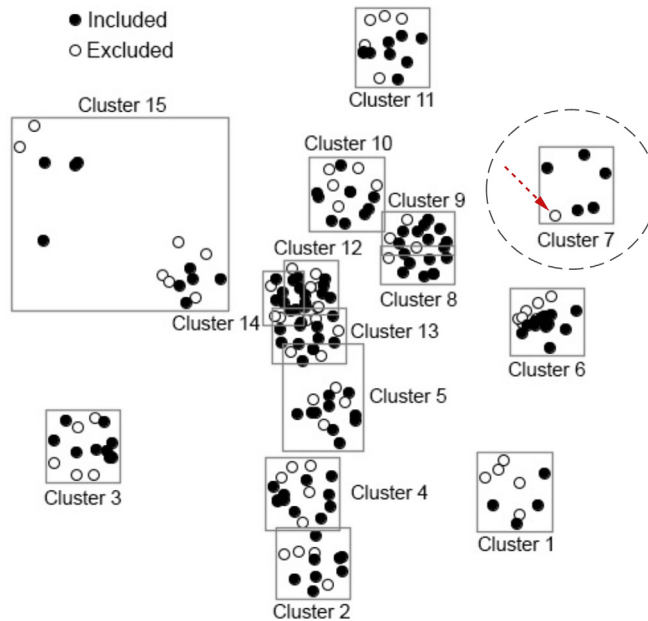


Fig. 2. Content map generated from 131 studies.

In order to analyze the selected 137 studies, we conducted a quality assessment. This step allowed us to perform a 5th stage in the selection process based on detailed quality criteria. In order to analyze the quality of the included primary studies we developed a checklist, as a quality instrument, containing seven questions (Table 5). The objectives of this list was to: identify the quality of the study regarding the main topic of this mapping and to identify the quality of the information that the study provides us, in order to know the relevance of the study within the SM. Our checklist was adapted from the generic quality criteria created by Kitchenham Kitchenham (2004). For each question in the checklist, the following scale-point was applied: Yes – 1 point; No – 0 points. The total quality score therefore fell into the range between: 0–1 (very poor); 2 (fair); 3–4 (good); 4–6 (very good) and 7 (excellent).

Table 5
Study Quality Checklist

| No | Item | Answer |
|----|----------------------------------------------------------------------------------|--------|
| Q1 | The CM was evaluated? | Yes/No |
| Q2 | Is it clear how the approach to evaluate CM was applied? | Yes/No |
| Q3 | Is it clear in which Computer Science topic, CM was applied? | Yes/No |
| Q4 | Did the study show improvements in CM construction or a new way to construct it? | Yes/No |
| Q5 | Was CM generated with a tool support? | Yes/No |
| Q6 | Are the benefits clear in using CM? | Yes/No |
| Q7 | Were there limitations in using CM? | Yes/No |

The quality score was used to decide the inclusion or exclusion of a primary study. The cutoff scale-point, selected by us, to exclude studies from the list of selected studies was 2.0 (very poor or fair quality). A total of 29 studies were excluded from this stage. As a final result, we got to 108 studies to be analyzed. Appendix A presents the reference of the selected studies.

3.4. Data Extraction and Synthesis

We considered different facets for classifying the studies. The facets were defined according to the RQs and taking the selected studies into account. So, depending on the focus of each scheme, the study was classified as one or any combination of this. Following, the categories of these facets are presented.

Purposes (RQ2): in this facet, we wanted to learn the purposes, when applying CMs in Computer Science. We have identified five main categories of such purposes:

- **Learning Level Evaluation:** it is related to the academic environment and quantifies how much knowledge was absorbed by a person from the use of CMs.
- **Assistance in Teaching and Learning:** this classification is related to the initiatives that use CMs as an educational tool in Computer Science.
- **Knowledge Organization:** from the structure of a CM, stakeholders can easily navigate through desired topics. This category is related to the initiatives that use CMs as a means to organize any knowledge on a particular subject.
- **Software Visual Representation:** this classification is designed to incorporate the initiatives that use CMs as a conceptual model for software requirements that assist stakeholders in the development, evaluation and maintenance of software.
- **General:** this category is used to classify those studies that discuss CMs in Computer Science in general.

Subareas applied (RQ3): this facet refers to the different subareas that CMs have been applied in Computer Science. We have identified seven main subareas: (i) Artificial Intelligence; (ii) Software Engineering; (iii) Database; (iv) Ontologies; (v) Human-Computer Interaction; (vi) Programming Languages; and (vii) Not Specified or General.

Resources (RQ4): this facet discusses the different resources used to support the development of CMs in Computer Science, as tools, techniques or methods. Based on the selected studies, we considered the following categories: (i) XML Schema; (ii) Text Mining; (iii) Paper and Pen; (iv) Ontologies; (v) Own System; (vii) Intelligent Knowledge System; (vii) Data Ink; (viii) Collaborative Construction; (ix) Concept Map Editor; and (x) Not Mentioned.

Evaluation (RQ5): this facet discusses the main guidelines or mechanism used to evaluate the CMs identified in the included studies. We adopted the following classification: (i) Support of a software for comparison; (ii) Structural with expert map; and (iii) Relational with expert map.

Reported benefits (RQ6): the categories for this facet are based on the main benefits related to use of CMs reported in the included studies. We have identified four main categories of benefits, namely: (i) Flexible structure and easy to understand; (ii) Knowledge representation; (iii) Knowledge Sharing; and (iv) Pedagogical contribution.

Reported Problems (RQ7): the categories for this facet are based on the main problems highlighted by the authors of the included studies related to use of CMs in Computing Science. We have identified four main categories of problems, namely: (i) Difficulty in creating the CMs; (ii) Cognitive overload; (iii) Increased workload; and (iv) Scalability.

4. Results of the Mapping

The results of our mapping study are presented. We used the facets of the classification schema aforementioned to answer the RQs. Appendix B presents the mapping of individual studies and its categories.

4.1. Frequency of Publication (RQ1)

In order to offer a general view of the efforts in the area of CMs in Computer Science, a distribution of the 108 selected studies over the years is shown in Fig. 3. As this figure suggests, although the research of CMs in Computer Science is not recent, the interest in CMs has been moderately increasing within 2006–2015, with a significant increase in 2011 and 2012.

Looking at the publication vehicle, conferences seem to be the main communication channel representing 54,62% (59 studies) of publications. *Journals* occupied 35.1% (38 studies), *workshops* 8,3% (9 studies) and finally *symposium* with 1.8% (2 studies).

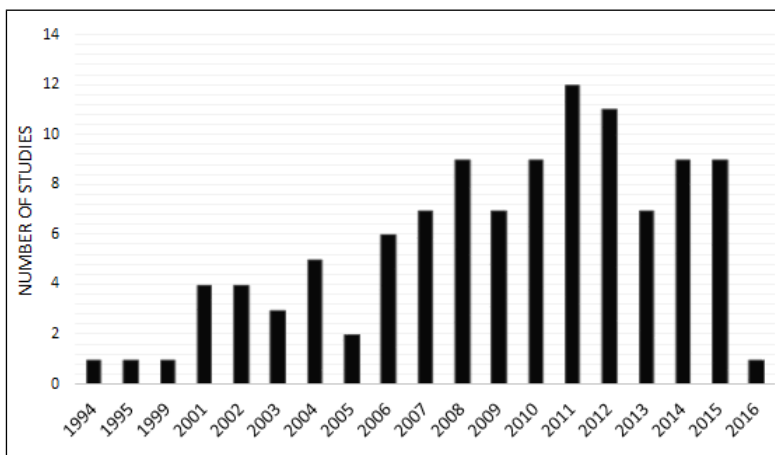


Fig. 3. Distribution of the selected studies over the years.

4.2. Purposes of CMs (RQ2)

Fig. 4 shows the number of studies per purposes of application. We can notice that Assistance in Teaching and Learning (63 studies – 58.33%) and Knowledge Organization (40 studies – 37%) have the largest representativeness. Some purposes that were identified are strongly related. For instance, knowledge organization aims to support assistance in teaching or learning. Thus, many studies were considered in both categories. Furthermore, many studies assigned in those categories use CMs as a means of teaching undergraduate courses of Computer Science and Software Engineering. CMs are effective educational tools which consist of concepts (Atapattu *et al.*, 2015a) and expert-generated CMs can be used to guide students as in a content repository (Williams *et al.*, 2012). Maps can improve learning when used as an advanced organizer in the classroom (Faily *et al.*, 2012).

CMs can also be employed more effectively to determine the depth of knowledge gained by a student. A total of 19 studies (approximately 17,6%) have as a purpose Learning Level Evaluation. According to Gary *et al.* (2012), CMs offer an alternative assessment tool that can be used to show how much a student may have acquired knowledge.

Even with a smaller percentage of studies, CMs have also been used for Software Visual Representation (7 studies – 6.5%) and it presented interesting results in software development. For instance, CMs have been used in object-oriented modeling (Sien, 2010), Software Requirements (Coffey *et al.*, 2012; Faily *et al.*, 2012; Kof *et al.*, 2007), Software Security Assurance (Snider *et al.*, 2014), process of developing software systems (Gurupur *et al.*, 2014) and Software Assessment (Williams *et al.*, 2012).

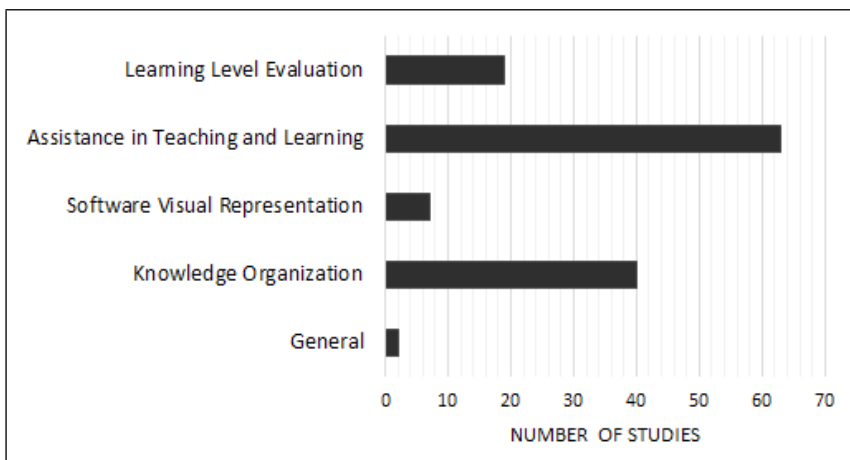


Fig. 4. Purpose of applying CMs in Computer Science.

4.3. Subareas Applied (RQ3)

Fig. 5 shows the number of studies considering the different subareas in computing science. Note that most of the studies (76 studies – 70.4%) did not clarify to which computing science sub-area the work is related. The studies discuss initiatives with CMs in computing science in a general form. For example, the studies (Álvarez Bermejo *et al.*, 2015; Atapattu *et al.*, 2015a; Huang *et al.*, 2012) argue that the use of CM helps to conceptualize, schematize and present procedural information like software documentation, explaining laboratory reports, in classroom. The studies argue how the techniques for representing knowledge, as CM, can be effectively used in a classroom for the understanding of disciplines in computing science.

Looking at the studies that present initiatives in a specific sub-area of Computer Science, two categories have greater representation:

- Programming Languages (10 studies – 9.6%).
- Software Engineering (12 studies – 11.1%).

In the Programming Languages category, CMs have been used mainly to present the Object-Oriented Programming (OOP) paradigm. For example, (Berges and Hubwieser, 2013; Berges *et al.*, 2012; Dogan and Dikbiyik, 2016; Hubwieser and Mühling, 2011), presented results investigating how CMs have been used in OOP teaching and learning. Table 6 presents the other programming languages.

In relation to Software Engineering, CMs have been applied with the purpose of assisting in different activities that involve software development process (Coffey *et al.*, 2012; Faily *et al.*, 2012; Upchurch and Sobel, 2002; Williams *et al.*, 2012), as well as how to organize concepts in Software Engineering domain (Gurupur *et al.*, 2014; Koch and Landes, 2015; Leake and Wilson, 2001; Mohamed *et al.*, 2013). In order to demonstrate this purpose, some studies are described below.

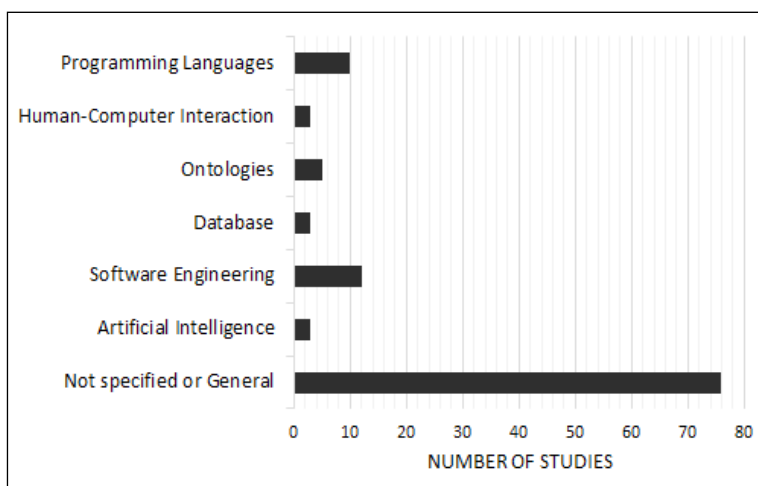


Fig. 5. Subareas that CMs in Computer Science have been applied.

Table 6
Studies per Programming Languages

| Programming | Languages Studies |
|-----------------------------------|-----------------------------------------------------------------------------------------------------------------------------------------------------------|
| Object-Oriented Programming (OOP) | Sien (2010); Berges <i>et al.</i> (2012); Dogan and Dikbiyik (2016); Hubwieser and Mühling (2011); Berges and Hubwieser (2013); Jain <i>et al.</i> (2014) |
| C Programming | Matthews (2010); Harrow <i>et al.</i> (2007) |
| Algorithm and Data Structures | Burdescu <i>et al.</i> (2008); Florea and Radu (2007) |

In Coffey *et al.* (2012); Faily *et al.* (2012); Kof *et al.* (2007), for instance, CMs were used to make sense of and improve the quality of a software requirements specification and representation of traceability between requirements. In Gurupur *et al.* (2014) a process of developing software systems is described by capturing the conceptual domain knowledge of the problem domain using CMs. According to Gurupur *et al.* (2014), there is a gap between user's needs and software implementation efforts. This problem persists mainly because software systems often do not fully support user needs. Leake and Wilson (2001) describe a research on supporting aerospace design by integrating a case-based design support framework with interactive tools for capturing expert design knowledge through CMs.

Regardless of the sub-areas in which CMs are used, it is possible to note that the main motivation for integrating CM is the fact that it makes easy to represent and understand a specific domain.

4.4. Resources (RQ4)

In this RQ we investigated what were the resources used in the studies to support the CMs construction. Nine different resources are highlighted in this context. Fig. 6 shows the number of studies considering the different resources used to construct CMs.

The great majority of the studies use their own systems (58 studies – 53.7%). The studies in this category propose the construction of a new system to assist in the creation of CMs in order to share and visualize knowledge. Many of the studies in this category suggest the construction of a tool for building CMs collaboratively (15 studies – 13.9%). Recent approaches of teaching and learning put emphasis in activities that take place in a collaborative frame. Collaborative learning approaches seem to encourage knowledge construction and it can lead to better development of ideas and concepts through discussion and negotiation. For instance, Tomoto *et al.* (2011) presented a collaboration tool for knowledge integration and sharing in cross-cultural communication using a participant-constructed collaborative CM. MaGIA tool was presented in Blečić *et al.* (2007), an Internet-based multi-user system designed for a collective and collaborative construction of knowledge models represented as CMs. Martínez-Maldonado *et al.* (2015) described the Tabletop-Supported Collaborative Learning (TSCL), a conceptual model that provides foundations for building tabletop-based systems that can inform understanding of the collaborative learning process.

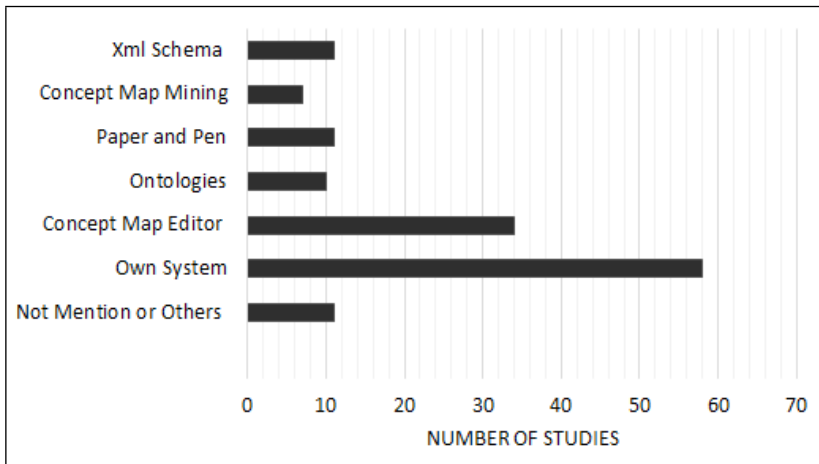


Fig. 6. Resources used to support the CMs construction.

Other collaborative tools are: Cañas and Hill (2010); Chung *et al.* (2010); Harrow *et al.* (2007); Herl *et al.* (1999); Hui (2003); Komis *et al.* (2002); Kremer and Gaines (1994); Kristensen (2011); Lahti (2011); Marshall *et al.* (2003); Tegos *et al.* (2015); Zanetti *et al.* (2006).

Another resource used by many studies for the construction of CMs is the Concept Map Editor (Cmap Tools¹) (34 studies – 31.4%). Cmap is a traditional tool, commonly used to support the construction, navigation and sharing knowledge models represented through CMs. Besides providing basic operations to draw and label CMs, CmapTools includes extensive capabilities, for example, to link CMs with electronic resources, such as, images, diagrams, video clips, and other CMs, enabling the construction of richly connected concept-map-based knowledge models for particular domains. It also enables distributed storage and access to CMs on multiple servers, to support knowledge sharing across multiple sites (Cañas *et al.*, 2004).

Besides the two most used resources, presented above, it is interesting to note the diversity of other resources used to support the construction or manipulation of CMs. For example, the creation of CM based on an existing ontology; the extraction of concepts and relationships from a text to automatically generate the CMs (called concept mining map); parser in XML-based document to extract concepts and their associated relations; and the traditional way of constructing CMs using paper and pencil. The studies in each one of these categories are presented in Appendix B, Table B3.

4.5. Evaluation of CMs (RQ5)

One of the main issues related to CMs is how to evaluate them. Several scoring schemes for human-based evaluation have been proposed. The analysis presented in Anohina and

¹ <http://cmap.ihmc.us/>

Grundspenkis (2009) shows that most of them are based on quantitative measures, that is, structural analysis (number of valid propositions, levels of hierarchy, etc.). Another method is to compare CMs created with one or more experts' maps. Currently, there are also proposals for automated evaluations of CM.

In this facet we analyze whether the CMs presented in the 108 studies that were left in this mapping were evaluated. Only 38 (35.1%) presented some type of evaluation. Then, we classified the main mechanism used to evaluate CMs identified in the included studies. Three types of evaluation were identified: (i) Relation with expert map; (ii) Structural analysis; and (iii) Support of a software to compare. Fig. 7 shows the number of studies considering the different types of evaluation used.

The first classification relates to evaluate the CM comparing with an expert's CMs. Normally, a CM which was developed by an expert is used as reference for evaluating other CMs created later. The great majority of the studies included in this mapping used this classification to evaluate the CMs generated (23 in 38 studies, corresponding to 84.2%). In Grundspenkis (2008), for instance, an approach is presented in which ontologies are transformed into CMs to be used for systematic creation of learner knowledge structure. In order to evaluate the CM created, a knowledge evaluation agent compares the learner's CM with a teacher's map and corresponding ontology, and recognizes synonyms and several patterns (correct or incorrect) of learner's solution. Rigby *et al.* (2009) examined means of increasing learners' expertise of Computer Information Technology course about the concepts through the use of varying types of representations, as CMs. The students created CMs of their understanding of threat analysis, which was then scored against an expert CM. Finally, Qasim *et al.* (2013) proposed an algorithm for automatic candidate term extraction from text documents to construct a CMs. CMs were verified by experts with doctoral degrees in the field of Information System.

The second classification refers to the structural analysis consisting of the comparison of CMs considering the number of valid propositions, levels of hierarchy, number of concepts, etc. In Gurupur *et al.* (2015) a tool is described that can be effectively used to evaluate student learning outcomes using CMs and Markov chain analysis. The CMs created are compared with each other from the calculation of number of concepts in hierarchy, number of support level concepts and number of detail level concepts. In Arruarte *et al.* (2014) a study was conducted using the concept mapping technique in computer engineering education for learning theoretical introductory database topics in

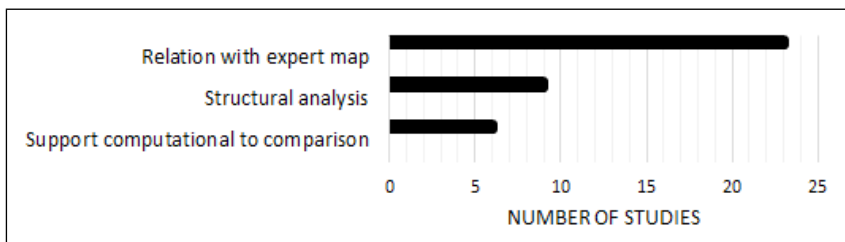


Fig. 7. Evaluation of CMs.

a collaborative way. Some sources of data have been analyzed to evaluate the results of the study, as individually created CMs and collaboratively created. CMs were evaluated in terms of the average number of nodes, average number of nodes relationships, completeness and thoroughness.

The third classification refers to evaluate CMs with software support. In Larraza-Mendiluze and Garay-Vitoria (2013), for instance, a process is presented to analyze CMs created by students about computer structure subject. All the CMs were merged to show the relationships that were missing. Another example of this category can be observed in Vaishnavi *et al.* (2016). The CMs elaborated by students are converted to a XML format and concepts and their relationships are identified. A probability distribution of concepts in the CM developed is calculated. The normal distribution is then represented as a form of learning curve. The evaluation of student's level of understanding content is assessed by analyzing the learning curve generated by this approach.

4.6. Reported Benefits (RQ6) and Problems Using CMs (RQ7)

As we can see from this mapping study, there are many benefits of implementing CMs in Computing Science:

- **Flexible structure and easy to understand:** CMs are a simple graphical representation and it is easy to understand a link between different concepts.
- **Knowledge representation:** knowledge represented in a visual format makes easier the recognition and the understanding of incoming information. In many disciplines various forms of CMs are already used as formal knowledge representation systems, for example: semantic networks in artificial intelligence, bond graphs in mechanical and electrical engineering, Petri nets in communications, requirements in the software development process.
- **Knowledge sharing:** researchers have investigated CMs for collaboration through map sharing. Semantic integration has received a significant amount of attention in recent years, particularly from database researchers seeking to facilitate information sharing and integrate heterogeneous data sources (Kristensen *et al.*, 2009).
- **Pedagogical contribution:** in educational area CMs can be used for supporting learning and also for assessing learning (Arruarte *et al.*, 2008). It is possible to note from our results (Fig. 8) that there are many studies that dealt with the effect evaluation of CMs on students' achievements in a wide diversity of areas, specially in Computer Science. According to Gurupur *et al.* (2015), CMs provide visual data to instructors on student misconceptions and their level of understanding. Hence CMs can be helpful to develop certain abilities such as, drawing reasonable inferences by identifying key concepts on a topic, synthesize and integrate the information and ideas, and learn concepts and theories in a study area.

Fig. 8 shows the main benefits in using CMs. The pedagogical contribution through CMs appears most representative. The fact that CMs can be used for different pedagogi-

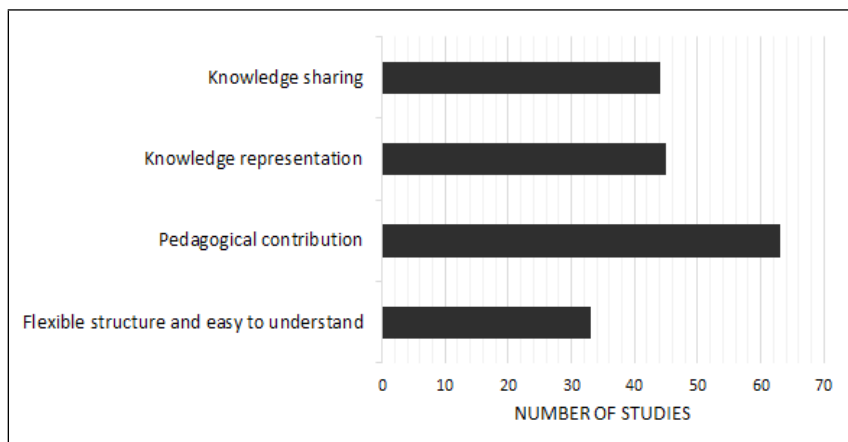


Fig. 8. Main benefits identified from CMs.

cal purposes, together with the nature of Computer Science, its many facets representing different abstraction levels and the interconnections among them, makes CMs relevant for Computer Science teaching and learning processes in general. Interestingly, despite the use of CM bringing many benefits, some authors, even though few, also highlight problems that may arise from the use of CM, such as:

- **Difficulty in creating the CMs:** it is important to have the knowledge domain on the subject to develop a CM with quality.
- **Cognitive overload:** in terms of the short-term memory, CM has a weakness; it might contain too many concepts in its structure causing learner's cognitive overload, i.e., becomes difficult to understand the content wanted to be learned.
- **Increased workload:** shortage of time is a potential risk to incorporate the use of CMs when working with deadlines, for example, in software development companies. The development or learning of another artifact can imply in increasing the employee workload and costs. However, automatic or semi-automatic creation of CMs from text documents is a worthwhile research very investigated nowadays (Chen *et al.*, 2008; Qasim *et al.*, 2013).
- **Scalability:** CMs with large scale quickly become too complex to be processed by the learner. A representation of a CM can lose its utility when the amount of information increases. The high number of concepts and cross-links between concepts makes difficult to understand the represented knowledge.

Fig. 9 shows how the main problems aforementioned are perceived in the included studies. It is important to highlight that not all studies mention problems related to the use of CMs. Cognitive overload was the problem more cited in the studies. In fact, cognitive load can become a problem when the domain of application is large, and consequently, CMs become overburdened with too much information and complexity (Williams *et al.*, 2012). According to Williams *et al.* (2012), this phenomenon (termed “map shock”) results in student disengagement and reduction of expected learning gains.

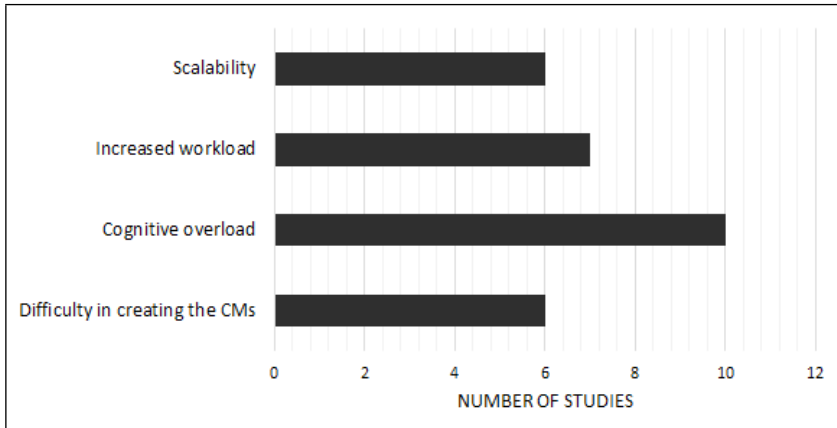


Fig. 9. Main problems identified from CMs.

5. Discussion

CMs were first proposed in education, to enable students to externalize their knowledge by constructing a based-representation of concepts and their relationships. This representation has been considered as a cognitive structures suitable for assessment or knowledge sharing. CMs are used worldwide to facilitate knowledge examination, construction, comparison, and reuse by users ranging from elementary graduated students to researchers. In the Computer Science area, this is no different. The main contribution of this research is to evidence how CMs have been used in Computer Science. This systematic mapping has shown that CMs have been heavily used with different purposes and in different subareas.

Within the Computer Science context, several studies reported that the CMs have been used, for example, to support artificial Intelligence, Human-Computer Interaction, Programming Languages and Software Engineering (Berges *et al.*, 2012; Kof *et al.*, 2007; León *et al.*, 2008; Portmann *et al.*, 2012). Many of the studies included in this mapping use CMs on general Computer Science subjects, that is, the subarea is not specified. On the other hand, Software Engineering and Programming Languages, although with few studies in the literature, were the subareas that stood out the most. It is possible to identify that CMs can provide important benefits in the representation of some programming languages paradigms (OOP, C), in the development of software product, in improving the requirements specifications quality or in software requirements traceability (Coffey *et al.*, 2012; Gurupur *et al.*, 2014).

Considering the two most outstanding subareas, Software Engineering and Programming Languages, we did an analysis of the year in which the studies were published. Software Engineering, for example, out of the 11 articles in this category, eight were published from 2009, and 3 in 2013. This shows that the interest in CM in software engineering can be considered recent. Similarly, Programming Language presents itself as a subarea that with interest in using CM recent, starting in 2003 to 2016.

The subareas were also analyzed according to their purposes (RQ2). The selected studies of Software Engineering have as main purposes the Knowledge Organization and Software Visual Representation with 81.8% of representatively. For example, in Gurupur *et al.* (2014), semantic requirements sharing approach is shown to reduce the semantic gap involved in the process of developing software systems. According to Gurupur *et al.* (2014), sometimes a requirements engineer may not fully comprehend the problem domain. Therefore, a CM allow to build a schematic representation of the domain knowledge and its can be easily comprehended by every individual involved in the development of a software system.

The studies selected in the Programming Language subarea, six of the ten studies has the purpose of Learning Level Evaluation. This result makes sense, since CMs have been proposed as a potentially facilitative learning strategy. According to Hubwieser and Mühling (2011), in science education, there are many research activities that use CM in order to investigate cognitive structures. Consequently, CM can be used to measure the knowledge level and/or learning in programming disciplines.

We analyzed in the selected studies in order to identify which were the tools used to construct CM to represent programming language, for example. The same happens in other categories. The main tool used in the programming language subarea were property systems. CMs have been created mainly by systems or applications developed by the authors that wrote the papers. This happens because tools available in the literature do not always meet the different purposes of each study. This causes researchers to create a new tool or customize an existing tool. In addition, it is important to note the priority that studies have given to CM construction in a collaborative way from the tools created. According to Tomoto *et al.* (2011), our world becoming globalized needs no borders but must be opened to cross-cultural, collaborative communication in every social field, including education. International distance education could more broadly help participants experience concept construction in the distance communication environment. Technological contributions can contribute to achieving these goals, adding a new dimension to collaborative learning.

One result that attracted attention was in relation to the evaluation of CMs. Although there are in the literature numerous systems or methods of CM evaluation, only 35.1% of the CMs included in this mapping were evaluated. The minority of included studies in this mapping (38 of 108) reported some CM evaluation, being: Relation with expert map, structural analysis and support of software to compare are examples of evaluation types.

In addition to the benefits already mentioned about the use of CMs, we argue that they are also useful in secondary studies context, discussed as follows. Many researchers conducting secondary studies, as one of their first activities, need to read the studies abstracts to decide about their inclusion or exclusion. In some domains, such as clinical Medicine, Education, Psychology and Social Sciences, the review of abstracts is more than enough to determine its relevance (Kitchenham, 2004). However, in Computer Science, especially, in Software Engineering, there are unstructured abstracts in the studies. This becomes difficult to identify the relevance or not of the studies (Brereton *et al.*, 2007). Recent literature has provided evidence that unstructured and poorly written ab-

stracts may compromise the selection activity (Brereton *et al.*, 2007; Dybå and Dingsøy, 2008; Dybå *et al.*, 2007; Kitchenham, 2008; Petersen and Nauman, 2011; Zhang and Muhammad, 2012, 2011a,b).

One potential solution to minimize such problem, experienced during a secondary study selection, is to promote the use of structured and graphical abstracts in Software Engineering (Hartley, 2004; Kitchenham, 2008). Since CMs can help in the understanding of a study, our research group have investigated the creation of graphical abstracts to support the selection activity in secondary studies using CMs (Felizardo *et al.*, 2017). Graphical abstracts should enable reviewers to manipulate images to better understand the knowledge there represented (Oliveira and Levkowitz, 2003), since analyzing data in graphical format requires less cognitive effort from the reviewer to extract information. The main objective of the visualization is to help users explore and understand data (abstracts) (Keim, 2002). Visual representations allow users making use of their optical capabilities to strengthen the process of knowledge acquisition (Oliveira and Levkowitz, 2003). In this context, CMs can be useful tools to summarize a complex structure of textual information, contributing in identifying the most relevant information in an article. The results of this mapping will be used by us to support the construction of graphic abstracts based on CMs.

5.1. Limitations

The current review has some limitations. The study selection and data extraction steps were initially performed by just one of the authors, and thus some subjectivity could have been embedded. In order to reduce this subjectivity, the other authors performed these same steps over a sample of studies. The results of each reviewer were then compared in order to detect possible bias.

As with all reviews it was limited by the search terms used and the electronic databases included. However the studies discussed in this mapping provide a snapshot of empirical research on outcomes and impacts of existing research on CMs initiatives in Computer Science. We tried to overcome the limitations by using previous simulations in the selected databases. We just considered studies indexed by the selected electronic databases, and those obtained from by snowballing and direct search for works from researchers/research groups. The exclusion of other sources makes the review more repeatable, but possibly some valuable studies may have been left out of our analysis.

6. Conclusions

A CM study gives an idea, in the early phases, of shortcomings in existing evidence, which becomes a basis for future studies Kitchenham and Charters (2007). This study presents a review of published literature on CMs initiatives in Computer Science in order to identify the state of the art. Seven research questions were defined and addressed investigating the following facets: (i) distribution of the selected studies over the years;

(ii) purposes to employ CM in Computer Science; (iii) different subareas that CMs have been applied; (iv) resources used to support the development of CMs; (v) guidelines or mechanism used to evaluate the CMs; (vi) main benefits reported on the use of CMs; and (vii) main problems reported on the use of CMs.

The most notable point about the current review was the diversity of research on positive impacts and outcomes associated with the use of CMs in Computer Science. Although it is a tool considered old in other areas, CMs in Computer Science have shown to be very promising research area, since CMs helps to provide visual representation of knowledge structures to assistance in teaching and learning.

The main contribution of this work is on making evident some aspects associated to the employment of CMs in Computer Science, in order to drive future research in this area. In this context, we highlight the following conclusions: (i) CMs in Computer Science is not a recent research, but has had a considerable increase in recent published studies; (ii) Assistance in Teaching and Learning and Knowledge Organization are the main purpose of applying CMs in Computer Science; (iii) there is a large diversity of the subareas of Computer Science in which CMs have been applied, such as Programming Language and Software Engineering; (iv) there seems to be no culture to evaluate CMs, which may impair the accuracy of CMs developed; (v) although CMs presents several benefits related to knowledge representation, sharing and pedagogical contribution, some problems also can be highlighted, such as cognitive overload, increased workload and scalability.

References

- Acharya, A., Sinha, D. (2015a). A weighted concept map approach to generate learning guidance in science courses. In: Mandal, J. et al. (Eds.), *Information Systems Design and Intelligent Applications (Advances in Intelligent Systems and Computing, 340)*. Springer, New Delhi, 143–152.
- Acharya, A., Sinha, D. (2015b). Smart concept map generation for learning using class of hash functions. *Smart Computing Review*, 5, 329–339.
- Álvarez Bermejo, J.A., Codina Sánchez, A., Belmonte Ureña, L.J. (2015). Application architecture to efficiently manage formal and informal m-learning. A case study to motivate computer engineering students. *DYNA*, 82(190), 113–120.
- Anohina, A., Grundspenkis, J. (2007). A concept map based intelligent system for adaptive knowledge assessment. In: *Databases and Information Systems IV*. 263–276.
- Anohina, A., Grundspenkis, J. (2009). Scoring concept maps: an overview. In: *International Conference on Computer Systems and Technologies*. IV.8-1–VI.8-6, Ruse, Bulgaria.
- Anohina, A., Pozdnakovs, D., Grundspenkis, J. (2007). Changing the degree of task difficulty in concept map based assessment system. In: *International Conference e-Learning (IADIS)*. 443–450.
- Anohina-Naumecca, A., Strumarne, M., Grundspenkis, J. (2010). Development of the scoring mechanism for the concept map based intelligent knowledge assessment system. In: *International Conference on Computer Systems and Technologies (CompSysTech)*, volume 43, 17–26.
- Apted, T., Kay, J. (2004). MECUREO ontology and modelling tools. *International Journal of Continuing Engineering Education and Life Long Learning*, 14(3), 191–211.
- Arruarte, A., Calvo, I., Elorriaga, J.A., Larrañaga, M., Conde, A. (2014). Collaborative and multilingual approach to learn database topics using concept maps. *Scientific World Journal*, 2014, 1–8.
- Arruarte, A., Elorriaga, J.A., Calvo, I., Larrañaga, M., Rueda, U. (2012). Computer-based concept maps for enabling multilingual education in computer science: A Basque, English and Spanish languages case. *Australasian Journal of Educational Technology*, 28, 793–808.

- Arruarte, A., Rueda, U., Elorriaga, J.A. (2008). Organizing the learning resources related to the subject Introduction to artificial Intelligence through Concept Maps. In: *38th Annual Frontiers in Education Conference (FIE)*. 17–22.
- Atapattu, T., Falkner, K., Falkner, N. (2015a). Educational question answering motivated by question-specific concept maps. In: *Lecture Notes in Computer Science*, volume 9112, 13–22.
- Atapattu, T., Falkner, K., Falkner, N. (2015b). Task-adapted concept map scaffolding to support quizzes in an online environment. In: *ACM Conference on Innovation and Technology in Computer Science Education (ITiCSE)*. 272–277.
- Atapattu, T., Falkner, K., Falkner, N., Scitepress, C., Publications, S.T., Atapattu, T., Falkner, K., Falkner, N. (2014). Evaluation of concept importance in concept maps mined from lecture notes – computer vs human. In: *6th International Conference on Computer Supported Education*, volume 2, 75–84.
- Attarzadeh, F., Gurkan, D., Ramos, M., Moges, M., Gallardo, V., Mehrubeoglu, M., Talusani, R., Karulkar, S. (2009). Perception of undergraduate freshman students on role models and correlation with their education background. In: *Annual Conference and Exposition (ASEE)*. 14.951.1–14.951.16.
- Benlloch-Dualde, J., Buendía García, F., Cano, J., Blanc Clavero, S., Lemus Zúñiga, L. (2013). Helping teachers create a dynamic learning environment using pen-based technology. *International Journal of Technologies in Learning*, 19, 107–120.
- Berges, M., Hubwieser, P. (2013). Concept specification maps – displaying content structures. In: *18th ACM conference on Innovation and technology in computer science education (ITiCSE)*. 291–296.
- Berges, M., Mühlhling, A., Hubwieser, P. (2012). The gap between knowledge and ability. In: *12th Koli Calling International Conference on Computing Education Research*. 126–134.
- Biswas, G., Roscoe, R. (2009). Promoting self-regulated learning skills in agent-based learning environments. In: *17th International Conference on Computers in Education*. 67–74, Hong Kong.
- Blecic, I., Cecchini, A., Trunfio, G. (2007). A collaborative and collective concept mapping tool. *4th International Conference (CDVE)*, 4674 LNCS, 264–271.
- Brereton, P.O., Kitchenham, B.A., Budgen, D., Turner, M., Khalil, M. (2007). Lessons from applying the systematic literature review process within the software engineering domain. *Journal of Systems and Software*, 80(4), 571–583.
- Buendia-Garcia, F., Benlloch-Dualde, J.V. (2012). Concept maps and patterns for designing learning scenarios based on digital-ink technologies. In: *International Workshop on Evidence-Based Technology Enhanced Learning*. 27–35.
- Burdescu, D.D., Mihaescu, M.C., Logofatu, B. (2008). Knowledge evaluation procedure based on concept maps. In: *2th International Conference on Research Challenges in Information Science*. 307–312.
- Cañas, A., Hill, G., Carff, R., Suri, N., Lott, J., Eskridge, T., Arroyo, M., R., C. (2004). Cmaptools: a knowledge modeling and sharing environment, in: concept maps: theory, methodology, technology. In: *International Conference on Concept Mapping*. Pamplona, Spain, 14–17.
- Calvo, I., Arruarte, A., Elorriaga, J.A., Larrañaga, M., Conde, A. (2011). The use of concept maps in computer engineering education to promote meaningful learning, creativity and collaboration. In: *Frontiers in Education Conference (FIE)*. 1–6.
- Cañas, A.J., Hill, G.A. (2010). Livemappers: a learning environment for concept mapbased collaborative projects. In: *4th International Conference on Concept Mapping*, number 2006, 1–8.
- Chang, K.E., Sung, Y.T., Chen, S.F. (2001). Learning through computer based concept mapping with scaffolding aid. *Journal of Computer Assisted Learning*, 17, 21–33.
- Charsky, D., Ressler, W. (2011). Games are made for fun: Lessons on the effects of concept maps in the classroom use of computer games. *Computers and Education*, 56, 604–615.
- Chen, N.S., Kinshuk, Wei, C.W., Chen, H.J. (2008). Mining e-Learning domain concept map from academic articles. *Computers and Education*, 50, 1009–1021.
- Chen, S. W., Lin, S.C., Chang, K.E. (2001). Attributed concept maps: Fuzzy integration and fuzzy matching. *IEEE Transactions on Systems, Man, and Cybernetics, Part B: Cybernetics*, 31, 842–852.
- Chu, K.K., Lee, C.I., Tsai, R.S. (2011). Ontology technology to assist learners' navigation in the concept map learning system. *Expert Systems with Applications*, 38, 11293–11299.
- Chung, H., Yang, S., Massjouni, N., Andrews, C., Kanna, R., North, C. (2010). VizCept: Supporting synchronous collaboration for constructing visualizations in intelligence analysis. In: *IEEE Conference on Visual Analytics Science and Technology (VAST)*. 107–114.
- Cimolino, L., Kay, J., Miller, A. (2003). Incremental student modelling and reflection by verified concept-mapping. In: *Learner Modelling for Reflection Workshop (AIED)*. 219–227.
- Coffey, J.W. (2007). A meta-cognitive tool for courseware development, maintenance, and reuse. *Computers and Education*, 48, 548–566.

- Coffey, J.W., Reichherzer, T., Owsnick-Klewe, B., Wilde, N. (2012). Automated concept map generation from service-oriented architecture artifacts. In: *5th International Conference on Concept Mapping*, volume 1, 49–56.
- Correia, P.R.M. (2012). The use of concept maps for knowledge management: From classrooms to research labs. *Analytical and Bioanalytical Chemistry*, 402(6), 1979–1986.
- De La Chica, S. (2007). SciNews online: Scaffolding the construction of scientific explanations. In: *25th SIGCHI Conference on Human Factors in Computing Systems (SIGCHI)*. 2183–2188.
- Dogan, B., Dikbiyik, E. (2016). OPCOMITS: Developing an adaptive and intelligent web based educational system based on concept map model.
- Dybå, T., Dingsøy, T. (2008). Empirical studies of agile software development: A systematic review. *Information and Software Technology*, 50(9–10), 833–859.
- Dybå, T., Dingsøy, T., Hanssen, G.K. (2007). Applying systematic reviews to diverse study types: An experience report. In: *1st International Symposium on Empirical Software Engineering and Measurement (ESEM)*. 225–234, Madrid, Spain. IEEE Computer Society.
- Faily, S., Lyle, J., Paul, A., Atzeni, A., Blomme, D. (2012). Requirements sensemaking using concept Maps. pdf. In: *International Conference on Human-Centred Software Engineering*. 217–232.
- Fan, M.-C., Chao, P.-Y., Chen, G.-D., Chin-Yeh, P. (2009). A concept based digital study guide and annotation system on paper textbook. In: *17th International Conference on Computers in Education*. 399–406, Hong Kong.
- Felizardo, K., de Souza, E., Hesae, S., Vijaykumar, N., Nakagawa, E. (2017). Analyzing the use of graphical abstracts to support study selection in secondary studies. In: *20th Workshop em Engenharia de Software Experimental (ESELAW)*.
- Felizardo, K.R., Andery, G.F., Paulovich, F.V., Minghim, R., Maldonado, J.C. (2012). A visual analysis approach to validate the selection review of primary studies in systematic reviews. *Information and Software Technology*, 54(10), 1079–1091.
- Florea, A. M., Radu, S. (2007). Enhancing pen-based experiences with the use of concept maps. In: *1st International Workshop on Pen-Based Learning Technologies (PLT)*. 1–6.
- Gaines, B.R., Shaw, M.L.G. (1995). Concept maps as hypermedia components. *International Journal of Human-Computer Studies*, 43, 323–361.
- Gary, K.A., Nagappan, Y., Verma, S., Branaghan, R.J. (2012). Assessing evolving conceptual knowledge in software engineering students. In: *12th Annual Conference and Exposition (ASEE)*. 1–11.
- Graudina, V., Grundspenkis, J. (2011). Algorithm of concept map transformation to ontology for usage in intelligent knowledge assessment system. In: *11th International Conference on Computer Systems and Technologies (CompSysTech)*. 109–114.
- Grundspenkis, J. (2008). Knowledge creation supported by intelligent knowledge assessment system. In: *12th World Multi-Conference on Systemics, Cybernetics and Informatics, Jointly with the 14th International Conference on Information Systems Analysis and Synthesis (ISAS)*, volume 7, 135–140.
- Gurupur, V.P., Pankaj Jain, G., Rudraraju, R. (2015). Evaluating student learning using concept maps and Markov chains. *Expert Systems with Applications*, 42, 3306–3314.
- Gurupur, V.P., Sakoglu, U., Jain, G.P., Tanik, U.J. (2014). Semantic requirements sharing approach to develop software systems using concept maps and information entropy: A Personal Health Information System example. *Advances in Engineering Software*, 70, 25–35.
- Harrow, K., Kopec, D., Eckhardt, R., Kobrak, M., Whitlock, P. (2007). SmartTutor: A unified approach for enhancing science education. In: *Journal of Computing Sciences in Colleges*, volume 22, 29–36.
- Hartley, J. (2004). Current findings from research on structured abstracts. *Journal of the Medical Library Association: JMLA*, 92(3), 368–371.
- Herl, H.E., O’Neil, H.F., Chung, G.K. W.K., Schacter, J. (1999). Reliability and validity of a computer-based knowledge mapping system to measure content understanding. *Computers in Human Behavior*, 15, 315–333.
- Hilbert, T., Nückles, M., Matzel, S. (2008). Concept mapping for learning from text : evidence for a worked-out-map-effect. In: *8th International Conference of the Learning Sciences*. 358–365.
- Huang, H.S., Chiou, C.C., Chiang, H.K., Lai, S.H., Huang, C.Y., Chou, Y.Y. (2012). Effects of multidimensional concept maps on fourth graders’ learning in web-based computer course. *Computers and Education*, 58, 863–873.
- Hubwieser, P., Mühling, A. (2009). Knowpats: patterns of declarative knowledge searching frequent knowledge patterns about object-orientation. In: *International Conference on Knowledge Discovery and Information Retrieval*. 358–364.
- Hubwieser, P., Mühling, A. (2011). What students (should) know about object oriented programming. In: *7th international workshop on Computing education research (ICER)*. 77–84.

- Hui, C. (2003). Exploring how primary school students function in computer supported collaborative learning. *International Journal of Continuing Engineering Education and Lifelong Learning*, 13, 258–268.
- Hwang, G.J., Kuo, F.R., Chen, N.S., Ho, H.J. (2014). Effects of an integrated concept mapping and web-based problem-solving approach on students' learning achievements, perceptions and cognitive loads. *Computers and Education*, 71, 77–86.
- Hwang, G.-J., Wu, P.-H., Ke, H.-R. (2011). An interactive concept map approach to supporting mobile learning activities for natural science courses. *Computers & Education*, 57, 2272–2280.
- Iqbal, R., Murad, M.A.A., Mustapha, A., Sharef, N.M. (2013). An ontology engineering approach with a focus on human centered design. In: *13th International Conference on Intelligent Systems Design and Applications*. 86–91.
- Jain, G.P., Gurupur, V.P., Schroeder, J.L., Faulkenberry, E.D. (2014). Artificial intelligence-based student learning evaluation: A concept map-based approach for analyzing a student's understanding of a topic. *IEEE Transactions on Learning Technologies*, 7, 267–279.
- Jalali, S., Wohlin, C. (2012). Systematic literature studies: Database searches vs. backward snowballing. In: *6th International Symposium on Empirical Software Engineering and Measurement (ESEM)*. 29–38. ACM.
- Kaivola, T. (2010). Using concept mapping as a note taking tool to computer science. In: *4th International Conference on Concept Mapping*. 460–466.
- Katagall, R., Dadde, R., Goudar, R.H., Rao, S. (2015). Concept mapping in education and semantic knowledge representation: an illustrative survey. *Procedia Computer Science*, 48, 638–643.
- Keim, D.A. (2002). Information visualization and visual data mining. *IEEE Transactions on Visualization and Computer Graphics*, 8(1), 1–8.
- Kitchenham, B. (2008). The role of replications in empirical software engineering – a word of warning. *Empirical Software Engineering*, 13(1), 219–221.
- Kitchenham, B.A. (2004). Procedures for performing systematic reviews. Joint Technical Report TR/SE-0401 (Keele) – 0400011.T.1 (NICTA), Software Engineering Group – Department of Computer Science – Keele University and Empirical Software Engineering – National ICT Australia Ltd.
- Kitchenham, B.A., Budgen, D., Brereton, O.P. (2011). Using mapping studies as the basis for further research – a participant-observer case study. *Information and Software Technology*, 53(6), 638–651.
- Kitchenham, B.A., Charters, S. (2007). *Guidelines for performing systematic literature reviews in software engineering. Technical Report EBSE 2007-001*. Keele University and Durham University, UK.
- Koch, M., Landes, D. (2015). Making Means-End-Maps workable for recommending teaching methods. In: *CEUR Workshop Proceedings, 1402*. 85–90.
- Kof, L., Gacitua, R., Rouncefield, M., Sawyer, P. (2007). Concept mapping as a means of requirements tracing. *The Journal of nursing education*, 46, 232–234.
- Komis, V., Avouris, N., Fidas, C. (2002). Computer-supported collaborative concept mapping: Study of synchronous peer interaction. *Education and Information Technologies*, 7, 169–188.
- Kommers, P., Stoyanova, N. (2002). Concept Mapping as a Medium of Shared Cognition in Computer-Supported Collaborative Problem Solving. *Journal of Interactive Learning Research*, 13, 111–133.
- Kremer, R., Gaines, B.R. (1994). Groupware concept mapping techniques. In: *12th Annual International Conference on Systems Documentation Technical Communications at the Great Divide (SIGDOC)*. 156–165.
- Kristensen, T. (2011). The dynamic content management system. In: *International Conference on Information Technology Based Higher Education and Training*. 1–8.
- Kristensen, T., Lamo, Y., Hinna, K.R.C., Hole, G.O. (2009). Dynamic content manager – a new conceptual model for e-learning. In: *International Conference (WISM), LNCS (5854)*. 499–507.
- Krudysz, G.A., McClellan, J.H. (2011). Web-based platform for problem-centered learning in DSP. In: *Digital Signal Processing Workshop and IEEE Signal Processing Education Workshop (DSP/SPE)*. 402–407.
- Ladkin, P. (2005). Supporting enterprise IS modelling using ontological analysis. *Safety Systems*, 14(3), 1–7.
- Lahti, L. (2011). Educational concept mapping method based on high-frequency words and Wikipedia linkage. In: *4th International Conference on Internet Technologies and Applications, (ITA)*. 440–448.
- Larraza-Mendiluze, E., Garay-Vitoria, N. (2013). Use of concept maps to analyze students' understanding of the I/O subsystem. In: *13th Koli Calling International Conference on Computing Education Research*. 67–76.
- Leake, D., Maguitman, A., Reichherzer, T. (2014). Experience-based support for humancentered knowledge modeling. *Knowledge-Based Systems*, 68, 77–87.
- Leake, D.B., Maguitman, A., Reichherzer, T., Cañas, A.J., Carvalho, M., Arguedas, M., Eskridge, T. (2004). Googling from a Concept Map: Towards Automatic Concept-Map-Based Query Formation. In: *First International Conference on Concept Mapping*, volume 1. 409–416.

- Leake, D.B., Wilson, D.C. (2001). A case-based framework for interactive capture and reuse of design knowledge. *Applied Intelligence*, 14, 77–94.
- Lee, C.H., Lee, G.G., Leu, Y. (2009). Application of automatically constructed concept map of learning to conceptual diagnosis of e-learning. *Expert Systems with Applications*, 36, 1675–1684.
- León, M., Medina, D., Martínez, N., García, Z. (2008). Two approaches to generate intelligent teaching-learning systems using artificial intelligence techniques. In: *6th Mexican International Conference on artificial Intelligence, Special Session (MICAI)*. 333–341.
- Liu, C.C., Don, P.H., Tsai, C.M. (2005). Assessment based on linkage patterns in concept maps. *Journal of Information Science and Engineering*, 21, 873–890.
- Luchini, K., Quintana, C., Soloway, E. (2003). Pocket PiCoMap: A Case Study in Designing and Assessing a Handheld Concept Mapping Tool for Learners. In: *Human factors in computing systems (CHI)*, page 321.
- Marshall, B., Chen, H., Madhusudan, T. (2006a). Matching knowledge elements in concept maps using a similarity flooding algorithm. *Decision Support Systems*, 42, 1290–1306.
- Marshall, B., Zhang, Y., Chen, H., Lally, A., Shen, R., Fox, E., Cassel, L.N. (2003). Convergence of knowledge management and e-learning: The GetSmart experience. In: *ACM/IEEE Joint Conference on Digital Libraries*, volume 2003-Janua, 135–146.
- Marshall, B.B., Chen, H., Shen, R., Fox, E. A. (2006b). Moving digital libraries into the student learning space: The GetSmart experience. *Journal on Educational Resources in Computing (JERIC)*, 6, 20.
- Martinez-Maldonado, R., Yacef, K., Kay, J. (2015). TSCL: A conceptual model to inform understanding of collaborative learning processes at interactive tabletops. *International Journal of Human-Computer Studies*, 83, 62–82.
- Matthews, R. (2010). Understanding Prospective Learners ‘ Computer Literacy using Concept Map : A Case Study. In: *2nd International Congress on Engineering Education (ICEED)*. 264–269.
- McClellan, J., Harvel, L., Velmurugan, R., Borkar, M., Scheibe, C. (2004). CNT: conceptmap based navigation and discovery in a repository of learning content. In: *34th Annual Frontiers in Education (FIE)*, volume 2, 567–572.
- Mohamed, K.A., Farhan, M.S., Abd Elatif, M.M.A. (2013). Ontology-based concept maps for software engineering. In: *9th International Computer Engineering Conference: Today Information Society What’s Next? (ICENCO)*. 92–97.
- Molinari, G., Sangin, M., Nüssli, M.-A., Dillenbourg, P. (2008). Effects of knowledge interdependence with the partner on visual and action transactivity in collaborative concept mapping. In: *8th International Conference of the Learning Sciences 2008 (ICLS)*. 91–98.
- Novak, J.D., Cañas, A.J. (2008). *The Theory Underlying Concept Maps and How to Construct and Use them. Technical Report Report IHMC CmapTools 2006-1 Rev 01-2008*, Florida Institute for Human and Machine Cognition.
- Novak, J.D., Cañas, A.J. (2006). The origins of the concept mapping tool and the continuing evolution of the tool. *Information Visualization*, 5(3), 175–184.
- Novak, J.D., Gowin, D.B., Kahle, J.B. (1984). *Learning how to learn*. Cambridge University Press, Cambridge.
- O’Leary, D.E. (1998). Enterprise knowledge management. *IEEE Computer Magazine*. 54–61.
- O’Leary, D.E., Studer, R. (2001). Knowledge management: an interdisciplinary approach. *IEEE Intelligent Systems*, 16.
- Oliveira, M.C.F., Levkowitz, H. (2003). From visual data exploration to visual data mining: A survey. *IEEE Transactions on Visualization and Computer Graphics*, 9(3), 378–394.
- Petersen, K., Nauman, B.A. (2011). Identifying strategies for study selection in systematic reviews and maps. In: *5th International Symposium on Empirical Software Engineering and Measurement (ESEM)*. IEEE Computer Society, 1–10.
- Petersen, K., Vakkalanka, S., Kuzniarz, L. (2015). Guidelines for conducting systematic mapping studies in software engineering: An update. *IEEE Transactions on Visualization and Computer Graphics*, 64, 1–18.
- Portmann, E., Hall, S., Kaufmann, M.A., Bern, C. (2012). A distributed, semioticinductive, and human-oriented approach to web-scale knowledge retrieval. In: *International Workshop on Web-scale Knowledge Representation, Retrieval and Reasoning*. 1–8.
- Qasim, I., Jeong, J.-W., Heu, J.-U., Lee, D.-H. (2013). Concept map construction from text documents using affinity propagation. *Journal of Information Science*, 39, 719–736.
- Reichherzer, T., Leake, D.B. (2006). Towards Automatic Support for Augmenting Concept Maps with Documents. In: *2th International Conference on Research Challenges in Information Science*, volume 1, 566–573.
- Rigby, S., Dark, M.J., Ekstrom, J.J., Rogers, M. (2009). The efficacy of cross-discipline representations for ill-defined concepts. In: *10th ACM conference on SIG-information technology education (SIGITE)*. 229–234.

- Rosas, R.S., Kane, M. (2012). Quality and rigor of the concept mapping methodology: A pooled study analysis. *Evaluation and Program Planning*, 35, 236–245.
- Roy, D. (2008). Using concept maps for information conceptualization and schematization in technical reading and writing courses: A case study for computer science majors in Japan. In: *IEEE International Professional Communication Conference*. 1–12.
- Roy, D. (2010). Concept map-oriented technical writing approach for computer science majors in an EFL context: Understanding text applications. In: *IEEE International Professional Communication Conference*. 67–79.
- Rueda, U., Arruarte, A., Elorriaga, J., Herran, E. (2009a). A contour-based segmentation algorithm for triangle meshes in 3d learning the attachment theory with the CM-ed concept map editor. *Computers & Education*, 52, 460–469.
- Rueda, U., Arruarte, A., Elorriaga, J. A. (2009b). From scalable concept maps to scalable open student models. In: *17th International Conference on Computers in Education*. 816–823.
- Sangin, M., Molinari, G., Nüssli, M.-a., Dillenbourg, P. (2008). How learners use awareness cues about their peer 's knowledge? Insights from synchronized eye-tracking data. In: *8th International Conference on International Conference for the Learning Sciences (ICLS)*, volume 2, 287–294.
- Sien, V.Y. (2010). Implementation of the concept-driven approach in an object-oriented analysis and design course. In: *6th Educators Symposium: Software Modeling in Education at MODELS (EduSymp)*, volume 10, 1–13.
- Snider, D., Coffey, J., Rechherzer, T., Wilde, N., Terry, C., Vandeville, J., Heinen, A., Pramanik, S. (2014). Using concept maps to introduce software security assurance cases. *CrossTalk*, 5, 211–224.
- Starr, R.R., de Oliveira, J.M.P. (2010). Conceptual maps as the first step in an ontology construction method. In: *14th IEEE International Enterprise Distributed Object Computing Conference Workshops*. 199–206.
- Tegos, S., Demetriadis, S., Karakostas, A. (2015). Leveraging conversational agents and concept maps to scaffold students' productive talk. In: *International Conference on Intelligent Networking and Collaborative Systems (INCoS)*. 176–183.
- Tomoto, T., Akakura, T., Nishihori, Y., Sugie, S., Nagaoka, K. (2011). Collaborative knowledge construction using concept maps for cross-cultural communication. In: *5th International Conference on Mobile Ubiquitous Computing, Systems, Services and Technologies (PECES) 3rd International Workshop on Pervasive Computing in Embedded Systems*, number c, 180–186.
- Tseng, S.S., Sue, P.C., Su, J.M., Weng, J.F., Tsai, W.N. (2007). A new approach for constructing the concept map. *Computers and Education*, 49, 691–707.
- Tseng, Y.H., Chang, C.Y., Rundgren, S.N.C., Rundgren, C.J. (2010). Mining concept maps from news stories for measuring civic scientific literacy in media. *Computers and Education*, 55(1), 165–177.
- Upchurch, R.L., Sobel, A.E.K.-I. (2002). Structural assessment cost of quality. In: *32nd Annual Frontiers in Education (FIE)*, 3, 12–17.
- Vaishnavi, P.C., Prasath, A.R., Shobana, B.T. (2016). Concept map based approach for analysing student's level of learning. In: *National Conference on Communication and Informatics*. 70–78.
- Valerio, A., Leake, D.B. (2006). Jump-starting concept map construction with knowledge extracted from documents. In: *2th International Conference on Concept Mapping*, volume 1, 296–303.
- Valerio, A., Leake, D.B., Cañas, A.J. (2012). Using automatically generated concept maps for document understanding: a human subjects experiment. In: *5th International Conference on Concept Mapping*, volume 2, 438–445.
- Wang, W., Cheung, C., Lee, W., Kwok, S. (2008). Self-associated concept mapping for representation, elicitation and inference of knowledge. *Knowledge-Based Systems*, 21, 52–61.
- Watson, M., Smith, A., Watter, S. (2005). Leximancer concept mapping of patient case studies. In: *9th International Conference (KES)*. 1232–1238.
- Weinerth, K., Koenig, V., Brunner, M., Martin, R. (2014). Concept maps: A useful and usable tool for computer-based knowledge assessment? A literature review with a focus on usability. *Computers and Education*, 78(2014), 201–209.
- Williams, C.B., Moore, J.P., Johri, A., Pierce, S.R., North, C. (2012). Advancing personalized learning via an adaptive concept map. In: *Annual Conference (ASEE)*. 12.
- Wu, P.-H., Hwang, G.-J., Milrad, M., Ke, H.-R., Huang, Y.-M. (2012). An innovative concept map approach for improving students' learning performance with an instant feedback mechanism. *British Journal of Educational Technology*, 43(2), 217–232.
- Yamashita, A.F., Anda, B., Sjöberg, D.I.K., Benestad, H.C., Arnstad, P.E., Moonen, L. (2009). Using concept mapping for maintainability assessments. In: *3rd International Symposium on Empirical Software Engineering and Measurement (ESEM)*. 378–389.

- Yoon, W. C., Lee, S., Lee, S. (2014). Burst analysis of text document for automatic concept map creation. In: *27th International Conference on Industrial Engineering and Other Applications of Applied Intelligent Systems (IEA/AIE)*. 407–416.
- Zack, M.H., Serino, M. (2000). *Knowledge Management And Collaboration Technologies*. Butterworth. Knowledge, Groupware and the Internet, 303–315.
- Zanetti, M.A., Turrini, G., Miazza, D. (2006). Addizionario: A new tool for learning between metacognition and creativity. *Informatica (Ljubljana)*, 30, 399–405.
- Zhang, H., Muhammad, A. (2012). Systematic reviews in software engineering: An empirical investigation. *Information and Software Technology*, page In Press.
- Zhang, H., Muhammad, A.B. (2011a). An empirical investigation of systematic reviews in software engineering. In: *5th International Symposium on Empirical Software Engineering and Measurement (ESEM)*. IEEE Computer Society, 1–10.
- Zhang, H., Muhammad, A.B., Tell, P. (2011b). Identifying relevant studies in software engineering. *Information and Software Technology*, 53(1), 625–637.
- Zheng, J.G., Fu, L., Ma, X., Fox, P. (2015). SEM+: tool for discovering concept mapping in Earth science related domain. *Earth Science Informatics*, 8, 95–102.
- Zumbach, J., Reimann, P., Koch, S. (2001). Influence of Passive Versus Active Information Access to Hypertextual Information Resources on Cognitive and Emotional Parameters. *Journal of Educational Computing Research*, 25, 301–318.
- Zvacek, S.M., Restivo, M.T., Chouzal, M.F. (2012). Visualizing understanding with concept maps. In: *15th International Conference on Interactive Collaborative Learning (ICL)*. Villach, 1–5.

V. dos Santos is DS in Business Administration in 2011 at Northern State University of Paraná, Brazil. He is technologist at Federal Technological University of Paraná – UTFPR, Cornélio Procópio/PR, Brazil. He received honorable mentions for best performance among the course students. Currently, he is master student in informatics at UTFPR. His main research interests are artificial Intelligence, Natural Language Processing and Systematic Literature Review.

É.F. de Souza has a Ph.D. (2014) and Masters (2010) from the Brazilian Institute for Space Research. She is a Professor at Federal Technological University of Paraná – UTFPR, Cornélio Procópio/PR, Brazil. She has experience in software engineering and knowledge management. Her main research interests include Software Testing, Model-Based Testing, Knowledge Management and Empirical Software Engineering.

K.R. Felizardo received the Post-Doctoral degree in Computer Science from the University of São Paulo – ICMC-USP, in 2014. Actually, she is Assistant Professor in Software Engineering at the Federal Technological University of Paraná – UTFPR, Cornélio Procópio/PR, Brazil. Her research interests are in Systematic Literature Review, Information Visualization and Visual Data Mining.

N.L. Vijaykumar is at Laboratory of Computing and Applied Mathematics of the Brazilian Institute for Space Research. He holds a Ph.D. degree in Informatics and his interests include Model-Based Tests, Performance Evaluation, Heuristics, Computational Modeling of Coastal Environment and Time Series Analysis.

Appendix A. Included studies.

Table A1 presents the citation of the selected studies plus an identifier (ID) for each paper. In Appendix B, we use these identifiers to refer to the corresponding publication.

Table A1
Final set of studies

| ID | Citation | ID | Citation |
|----|--------------------------------------------|----|---------------------------------------|
| 1 | Larraza-Mendiluze and Garay-Vitoria (2013) | 2 | Gurupur <i>et al.</i> (2015) |
| 3 | Atapattu <i>et al.</i> (2015a) | 4 | Williams <i>et al.</i> (2012) |
| 5 | Faily <i>et al.</i> (2012) | 6 | Gary <i>et al.</i> (2012) |
| 7 | Sien (2010) | 8 | Kof <i>et al.</i> (2007) |
| 9 | Coffey <i>et al.</i> (2012) | 10 | Snider <i>et al.</i> (2014) |
| 11 | Huang <i>et al.</i> (2012) | 12 | Álvarez Bermejo <i>et al.</i> (2015) |
| 13 | Berges <i>et al.</i> (2012) | 14 | Dogan and Dikbiyik (2016) |
| 15 | Hubwieser and Mühling (2011) | 16 | Berges and Hubwieser (2013) |
| 17 | Jain <i>et al.</i> (2014) | 18 | Matthews (2010) |
| 19 | Harrow <i>et al.</i> (2007) | 20 | Burdescu <i>et al.</i> (2008) |
| 21 | Florea and Radu (2007) | 22 | Upchurch and Sobel (2002) |
| 23 | Gurupur <i>et al.</i> (2014) | 24 | Leake and Wilson (2001) |
| 25 | Koch and Landes (2015) | 26 | Mohamed <i>et al.</i> (2013) |
| 27 | Tomoto <i>et al.</i> (2011) | 28 | Blecic <i>et al.</i> (2007) |
| 29 | Martinez-Maldonado <i>et al.</i> (2015) | 30 | Zanetti <i>et al.</i> (2006) |
| 31 | Marshall <i>et al.</i> (2003) | 32 | Lahti (2011) |
| 33 | Chung <i>et al.</i> (2010) | 34 | Hui (2003) |
| 35 | Kristensen (2011) | 36 | Tegos <i>et al.</i> (2015) |
| 37 | Kremer and Gaines (1994) | 38 | Cañas and Hill (2010) |
| 39 | Komis <i>et al.</i> (2002) | 40 | Herl <i>et al.</i> (1999) |
| 41 | Grundspenkis (2008) | 42 | Rigby <i>et al.</i> (2009) |
| 43 | Qasim <i>et al.</i> (2013) | 44 | Arruarte <i>et al.</i> (2014) |
| 45 | Vaishnavi <i>et al.</i> (2016) | 46 | Kristensen <i>et al.</i> (2009) |
| 47 | Arruarte <i>et al.</i> (2008) | 48 | Chen <i>et al.</i> (2008) |
| 49 | León <i>et al.</i> (2008) | 50 | Portmann <i>et al.</i> (2012) |
| 51 | Fan <i>et al.</i> (2009) | 52 | Coffey (2007) |
| 53 | Tseng <i>et al.</i> (2007) | 54 | Acharya and Sinha (2015a) |
| 55 | Graudina and Grundspenkis (2011) | 56 | Iqbal <i>et al.</i> (2013) |
| 57 | Yoon <i>et al.</i> (2014) | 58 | Arruarte <i>et al.</i> (2012) |
| 59 | Roy (2010) | 60 | Hilbert <i>et al.</i> (2008) |
| 61 | Buendía-García and Benlloch-Dualde (2012) | 62 | Gaines and Shaw (1995) |
| 63 | Acharya and Sinha (2015b) | 64 | Anohina-Naumecca <i>et al.</i> (2010) |
| 65 | Molinari <i>et al.</i> (2008) | 66 | Atapattu <i>et al.</i> (2014) |
| 67 | Leake <i>et al.</i> (2014) | 68 | Rueda <i>et al.</i> (2009b) |
| 69 | Charsky and Ressler (2011) | 70 | Benlloch-Dualde <i>et al.</i> (2013) |
| 71 | Sangin <i>et al.</i> (2008) | 72 | Zumbach <i>et al.</i> (2001) |

Continued on next page

Table A1 – continued from previous page

| ID | Citation | ID | Citation |
|-----|---------------------------------|-----|--------------------------------|
| 73 | Hubwieser and Mühling (2009) | 74 | Watson <i>et al.</i> (2005) |
| 75 | Apted and Kay (2004) | 76 | Marshall <i>et al.</i> (2006b) |
| 77 | Attarzadeh <i>et al.</i> (2009) | 78 | Luchini <i>et al.</i> (2003) |
| 79 | Biswas and Roscoe (2009) | 80 | De La Chica (2007) |
| 81 | Wang <i>et al.</i> (2008) | 82 | Zheng <i>et al.</i> (2015) |
| 83 | Ladkin (2005) | 84 | Atapattu <i>et al.</i> (2015b) |
| 85 | Calvo <i>et al.</i> (2011) | 86 | Yamashita <i>et al.</i> (2009) |
| 87 | Roy (2008) | 88 | Krudysz and McClellan (2011) |
| 89 | Anohina and Grundspenkis (2007) | 90 | Hwang <i>et al.</i> (2011) |
| 91 | Lee <i>et al.</i> (2009) | 92 | Chen <i>et al.</i> (2001) |
| 93 | Anohina <i>et al.</i> (2007) | 94 | McClellan <i>et al.</i> (2004) |
| 95 | Valerio and Leake (2006) | 96 | Kommers and Stoyanova (2002) |
| 97 | Starr and de Oliveira (2010) | 98 | Chang <i>et al.</i> (2001) |
| 99 | Marshall <i>et al.</i> (2006a) | 100 | Chu <i>et al.</i> (2011) |
| 101 | Valerio <i>et al.</i> (2012) | 102 | Kaivola (2010) |
| 103 | Cimolino <i>et al.</i> (2003) | 104 | Liu <i>et al.</i> (2005) |
| 105 | Leake <i>et al.</i> (2004) | 106 | Reichherzer and Leake (2006) |
| 107 | Tseng <i>et al.</i> (2010) | 108 | Hwang <i>et al.</i> (2014) |

Appendix B. Mapping of individual studies to categories.

The following Tables (B1, B2, B3, B4, B5, B6) present the articles classifications (Section 3.4). We used the ID corresponding to each article created in the Appendix A.

Table B1
Studies per purposes.

| Purposes | Studies |
|-------------------------------------|---------------------------------------------------------------------------------------------------------------------------------------------------------------------------------------------------------------------------------------------------------------------------------------------------------------------------------------------------------------------------|
| Learning Level Evaluation | [1]; [2]; [13]; [15]; [17]; [18]; [20]; [22]; [35]; [40]; [42]; [45]; [60]; [64]; [67]; [69]; [72]; [92]; [93] |
| Assistance in Teaching and Learning | [3]; [4]; [6]; [11]; [14]; [18]; [19]; [21]; [24]; [27]; [28]; [29]; [30]; [31]; [32]; [33]; [34]; [35]; [36]; [37]; [38]; [39]; [41]; [44]; [46]; [48]; [49]; [51]; [52]; [54]; [58]; [59]; [61]; [63]; [65]; [66]; [69]; [70]; [71]; [72]; [78]; [79]; [87]; [99]; [85]; [88]; [77]; [93]; [90]; [91]; [94]; [96]; [97]; [98]; [100]; [101]; [102]; [103]; [104]; [108] |
| Knowledge Organization | [4]; [16]; [19]; [25]; [26]; [30]; [31]; [32]; [33]; [35]; [37]; [43]; [47]; [50]; [52]; [53]; [57]; [62]; [63]; [66]; [68]; [73]; [74]; [80]; [81]; [82]; [83]; [84]; [88]; [95]; [99]; [100]; [101]; [105]; [106]; [107] |
| Software Visual Representation | [5]; [7]; [8]; [9]; [10]; [23]; [86] |
| General | [55]; [56] |

Table B2
Studies per Subarea.

| Subarea | Studies |
|----------------------------|----------------------------------------------------------------|
| Artificial Intelligence | [2]; [49]; [95] |
| Software Engineering | [5]; [6]; [10]; [17]; [22]; [23]; [24]; [25]; [26]; [83]; [86] |
| Database | [44]; [58]; [94] |
| Ontologies | [1]; [26]; [56] |
| Human-computer Interaction | [50]; [67]; [80] |
| Programming Languages | [7]; [13]; [14]; [15]; [16]; [17]; [18]; [19]; [20]; [21] |

Table B3
Studies per Resources.

| Resources | Studies |
|----------------------------|-----------------------------------------------------------------------------------------------------------------------------------------------------------------------------------------------------------------------------------------------------------------------------------------------------------------------------------------------------------|
| XML Schema | [1]; [2]; [5]; [17]; [23]; [28]; [45]; [52]; [66]; [76]; [94] |
| Concept Map Editor | [1]; [2]; [3]; [5]; [6]; [7]; [9]; [10]; [15]; [17]; [21]; [23]; [24]; [25]; [42]; [44]; [45]; [47]; [51]; [52]; [58]; [59]; [60]; [65]; [71]; [73]; [76]; [84]; [85]; [87]; [93]; [96]; [102] |
| Own system | [3]; [4]; [8]; [11]; [12]; [14]; [16]; [19]; [20]; [27]; [28]; [29]; [30]; [31]; [32]; [34]; [33]; [35]; [36]; [37]; [38]; [39]; [40]; [48]; [49]; [52]; [53]; [54]; [57]; [61]; [63]; [68]; [72]; [74]; [76]; [78]; [79]; [80]; [81]; [82]; [88]; [90]; [91]; [93]; [92]; [94]; [97]; [98]; [99]; [100]; [101]; [103]; [104]; [105]; [106]; [107]; [108] |
| Ontologies | [23]; [25]; [26]; [41]; [50]; [55]; [56]; [75]; [82]; [100] |
| Collaborative Construction | [27]; [28]; [29]; [31]; [39]; [40]; [56]; [99] |
| Paper and Pen | [7]; [13]; [15]; [30]; [31]; [34]; [51]; [58]; [99] |
| Text Mining | [16]; [43]; [66]; [95]; [100]; [101]; [107] |
| Others | [21]; [24]; [43]; [53]; [61]; [63]; [66]; [67]; [70]; [81]; [86]; [97] |
| Not mention | [46]; [69]; [77]; [83] |

Table B4
Studies per Evaluation.

| Evaluation | Studies |
|---------------------------------------|-----------------------------------------------------------------------------------------------------------------------------------|
| Software to support in the comparison | [1]; [5]; [45]; [49]; [56] |
| Structural analysis | [2]; [4]; [17]; [18]; [22]; [31]; [44]; [67]; [73]; [97] |
| Relacional com mapa de expert | [6]; [8]; [13]; [14]; [15]; [20]; [23]; [40]; [41]; [42]; [43]; [46]; [58]; [64]; [66]; [69]; [78]; [82]; [86]; [93]; [98]; [106] |

Table B5
Studies per Reported benefits .

| Reported benefits | Studies |
|-------------------------------------------|-------------------------------------------------------------------------------------------------------------------------------------------------------------------------------------------------------------------------------------------------------------------------------------------------------------------|
| Flexible structure and easy to understand | [10]; [12]; [19]; [20]; [21]; [26]; [27]; [32]; [35]; [43]; [50]; [51]; [52]; [56]; [58]; [59]; [61]; [62]; [63]; [70]; [81]; [86]; [87]; [93]; [95]; [99]; [107] |
| Pedagogical Contribution | [2]; [6]; [11]; [13]; [17]; [15]; [18]; [20]; [21]; [22]; [25]; [28]; [29]; [30]; [32]; [35]; [38]; [40]; [41]; [42]; [43]; [44]; [45]; [46]; [47]; [53]; [58]; [60]; [61]; [64]; [65]; [66]; [69]; [71]; [73]; [77]; [78]; [80]; [81]; [84]; [87]; [88]; [91]; [92]; [93]; [94]; [98]; [104]; [99]; [107]; [108] |
| Knowledge Presentation | [4]; [5]; [6]; [7]; [8]; [9]; [12] [16]; [19]; [20]; [23]; [24]; [26]; [29]; [30]; [31]; [33]; [35]; [36]; [39]; [42]; [43]; [48]; [52]; [57]; [61]; [66]; [67]; [68]; [73]; [74]; [77]; [81]; [83]; [84]; [87]; [95]; [97]; [99]; [101]; [103]; [105]; [106] |
| Knowledge Sharing | [5]; [6]; [10]; [11]; [12]; [16]; [24]; [26]; [27]; [29]; [30]; [32]; [33]; [35]; [36]; [37]; [38]; [40]; [43]; [45]; [46]; [48]; [49]; [52]; [54]; [61]; [65]; [66]; [72] [77]; [79]; [80]; [82]; [84]; [90]; [93]; [94]; [98]; [99]; [96]; [100]; [102]; [106] |

Table B6
Studies per Reported Problems

| Reported Problems | Studies |
|----------------------------|-----------------------------------------------------------------------------------------|
| Difficulty in creating CMs | [13]; [22]; [43]; [66]; [93]; [98] |
| Cognitive Overload | [4]; [5]; [11]; [48]; [72]; [84]; [86]; [100]; [108] |
| Increased Workload | [5]; [15]; [43]; [48] [53]; [82]; [99] |
| Scalability | [4]; [5]; [11]; [33]; [68] [84] |
| Others | [4]; [6]; [13]; [21]; [26]; [34]; [41]; [54]; [67]; [69]; [76]; [78]; [86]; [93]; [107] |