



Kitching, A. R., Anders, H.-J. and Basu, N. (2020) ANCA-associated vasculitis. *Nature Reviews Disease Primers*, 6, 71. (doi: [10.1038/s41572-020-0204-y](https://doi.org/10.1038/s41572-020-0204-y)).

This is the author's final accepted version.

There may be differences between this version and the published version. You are advised to consult the publisher's version if you wish to cite from it.

<http://eprints.gla.ac.uk/222668/>

Deposited on: 01 September 2020

Enlighten – Research publications by members of the University of Glasgow  
<http://eprints.gla.ac.uk>

## **ANCA-associated vasculitis**

A. Richard Kitching<sup>1†</sup>, Hans-Joachim Anders<sup>2</sup>, Neil Basu<sup>3</sup>, Elisabeth Brouwer<sup>4</sup>, Jennifer Gordon<sup>5</sup>, David R. Jayne<sup>6</sup>, Joyce Kullman<sup>7</sup>, Paul A. Lyons<sup>6,8</sup>, Peter A. Merkel<sup>9</sup>, Caroline O.S. Savage<sup>10</sup>, Ulrich Specks<sup>11</sup> and Renate Kain<sup>12</sup>

<sup>1</sup> Centre for Inflammatory Diseases, Monash University Department of Medicine, Monash Medical Centre, Clayton, and Departments of Nephrology and Paediatric Nephrology, Monash Health, Clayton, Australia.

<sup>2</sup> Renal Division, Medizinische Klinik und Poliklinik IV, LMU Klinikum, Ludwig-Maximilians University, Munich, Germany.

<sup>3</sup> Institute of Infection, Immunity and Inflammation, University of Glasgow, UK

<sup>4</sup> Vasculitis Expertise Centre Groningen, Department of Rheumatology and Clinical Immunology, University of Groningen, University Medical Centre Groningen, Groningen, Netherlands

<sup>5</sup> Department of Neuroscience and Center for Neurovirology, Temple University School of Medicine, Philadelphia, PA, USA

<sup>5 6</sup> Department of Medicine, University of Cambridge School of Clinical Medicine, University of Cambridge, Cambridge Biomedical Campus, Cambridge, UK.

<sup>7</sup> Vasculitis Foundation, Kansas City, MO, USA

<sup>8</sup> Cambridge Institute for Therapeutic Immunology and Infectious Disease, Jeffrey Cheah Biomedical Centre University of Cambridge, Cambridge, UK

<sup>9</sup> Division of Rheumatology, Departments of Medicine and Department of Biostatistics, Epidemiology, and Informatics, University of Pennsylvania, Philadelphia, PA, USA

<sup>10</sup> Institute of Immunology and Immunotherapy, University of Birmingham, Birmingham, UK.

<sup>11</sup> Division of Pulmonary and Critical Care Medicine, Mayo Clinic College of Medicine and Science, Rochester, MN, USA

<sup>12</sup> Department of Pathology, Medical University Vienna, Vienna, Austria

†email: richard.kitching@monash.edu

## **Abstract**

The anti-neutrophil cytoplasmic antibody (ANCA)-associated vasculitides (AAVs) are a group of disorders involving severe, systemic, small-vessel vasculitis and are characterized by the development of autoantibodies against the neutrophil proteins leukocyte proteinase 3 (PR3-ANCA) or myeloperoxidase (MPO-ANCA). The three AAV subgroups, namely granulomatosis with polyangiitis (GPA), microscopic polyangiitis and eosinophilic GPA (EGPA), are defined on the basis of clinical features. However, genetic and other clinical findings suggest that these clinical syndromes may be better classified as PR3-positive AAV (PR3-AAV), MPO-positive AAV (MPO-AAV) and, for EGPA, by the presence or absence of ANCA (ANCA<sup>+</sup> or ANCA<sup>-</sup>, respectively). Although any tissue can be involved in AAV, the upper and lower respiratory tract and kidneys are most commonly and severely affected. AAVs have a complex and unique pathogenesis, with evidence for a loss of tolerance to neutrophil proteins, which leads to ANCA-mediated neutrophil activation, recruitment and injury, with effector T cells also involved. Without therapy, prognosis is poor, but treatments, typically immunosuppressants, have improved survival, albeit with considerable morbidity from glucocorticoids and other immunosuppressive medications. Current challenges include improving measures of disease activity and risk of relapse, uncertainty about optimal therapy duration and a need for targeted therapies with fewer adverse effects. Meeting these challenges requires a more detailed knowledge of the fundamental biology of AAV, and co-operative international research and clinical trials with meaningful input from patients.

## Introduction

The anti-neutrophil cytoplasmic antibody (ANCA)-associated vasculitides (AAVs) are diseases characterized by inflammation of blood vessels, endothelial injury and tissue damage. Three types of small-vessel vasculitis, namely granulomatosis with polyangiitis (GPA), microscopic polyangiitis (MPA) and eosinophilic granulomatosis with polyangiitis (EGPA; previously known as Churg–Strauss syndrome), feature a loss of tolerance to neutrophil primary granule proteins, most often leukocyte proteinase 3 (PR3; also known as myeloperoxidase) or myeloperoxidase (MPO) (Table 1). The vessels involved in AAV are typically capillaries, arterioles and venules, but small arteries and veins may also be affected. Autoimmunity is documented clinically by serum ANCAs against PR3 (PR3-ANCA) or MPO (MPO-ANCA), which are generally associated with the main syndromic AAV presentations (Box 1). AAVs collectively represent one of several types of autoimmune vasculitis (Figure 1).

GPA and MPA can involve small blood vessels in any organ or tissue, but commonly affect the upper and lower respiratory tract and the kidneys (Box 2). Patients with AAV typically present with severe organ-threatening or life-threatening disease, although less severe presentations also occur. GPA is predominantly associated with PR3-ANCA, and its clinical features typically include sinonasal disease, lower respiratory tract involvement with pulmonary haemorrhage and granulomatous inflammation, and glomerulonephritis. MPA is usually associated with MPO-ANCA, and clinical features include more severe renal disease and some of the manifestations of GPA but without granulomatous inflammation. EGPA is characterized by asthma, eosinophilia and, in many (but not all) cases, vasculitis. EGPA is less common than GPA or MPA and, in some cases, is associated with ANCAs, mainly MPO-ANCA (Table 1). Although categorized as a form of AAV, EGPA has less overlap with the other AAVs than that between GPA and MPA in its genetic, pathogenetic and clinical features, and management and is typically considered a separate entity.

Improvements in treatment and prognosis for patients with AAV have resulted from translation of both pre-clinical and clinical research findings. Here, we provide an updated overview of the clinical and molecular features of AAVs, present current pathophysiological concepts, discuss established and upcoming therapeutic options, emphasise the value of patient-oriented outcomes and provide a perspective on future challenges in AAV research and treatment.

## **Epidemiology**

### ***Incidence and prevalence***

Although fulfilling most definitions of a ‘rare disease’, with a historical estimated prevalence of 48–184 cases per million persons<sup>1</sup>, rheumatologists, nephrologists, clinical immunologists and other physicians regularly encounter patients with AAV. In fact, more recent studies report prevalence rates of 300–421 per million persons<sup>2,3</sup>, an increase likely explained by improving survival and better case definition.

The global effects of AAVs in terms of premature mortality<sup>4</sup>, quality of life (QOL)<sup>5</sup> and societal economic costs<sup>6</sup> are considerable. Since the introduction of commercially available ANCA assays in the mid-1990s and enhanced physician awareness, there has been a noticeable apparent increase in AAV incidence. For example, the incidence rate of GPA between 1975 and 2001 in Sweden increased from 3.3 to 11.9 cases per million persons per year<sup>7</sup>. The plateauing of incidence rates since then indicates that the true incidence has probably remained stable, although the lack of standardized diagnostic criteria may affect case ascertainment.

Wide geographical variation exists in AAV incidence (Figure 2), which is partly explained by methodological differences in study design, although specific patterns can be observed. First, GPA (PR3-AAV) mainly affects countries/regions in which the population is predominantly of European ancestry and is seldom observed in East Asian countries/regions. By contrast, MPA (MPO-AAV) predominates in Asian countries/regions, such as China and Japan<sup>8,9</sup>. Second, the incidence of GPA is influenced by latitude, as the incidence is lower towards the equator<sup>10,11</sup>. The disparity in incidence among ethnicities is further supported by studies examining multi-ethnic populations. Surveys in France and the USA indicate at least two-fold higher incidence of GPA and MPA in white populations than in other ethnicities<sup>12,13</sup>. A more recent UK study identified a similar signal, but this was mostly explained by the older age of the white population<sup>14</sup>. EGPA is strongly linked to asthma and eosinophilia in terms of both its clinical features and genetic make-up, although epidemiological data for EGPA are limited, as are data from Africa and South Asia for all types of AAV. It is unclear whether lack of access to ANCA testing in low-income and middle-income countries/regions is resulting in not only a lack of data but also under-diagnosis and under-treatment of AAV in these areas.

AAV in children is rare and less common than some other forms of vasculitis (including Kawasaki disease and IgA vasculitis). GPA seems to be more common than MPA or EGPA, and unlike in adults, AAV in children is likely to be more common in females<sup>15</sup>.

### ***Risk factors and disease determinants***

Compelling evidence exists to implicate genetic factors in the pathogenesis of AAV, although genetic predisposition alone does not explain this complex disorder. As the age of onset typically ranges between middle to older age and there is an equal sex distribution in AAV prevalence, it is likely that environmental factors have a key role in AAV aetiology. Some epidemiological studies report a cyclical occurrence of GPA, which is consistent with an infectious trigger. Although the majority of studies describe an increase in the incidence of GPA in winter<sup>16-19</sup>, a higher summer incidence and no seasonal change have also been reported<sup>20,21</sup>. Indeed, increased rates of chronic *Staphylococcus aureus* nasal carriage observed among patients with GPA have been associated with an increased relapse risk<sup>22,23</sup>.

More granular epidemiological inspections of putative environmental causes are limited to small exploratory studies. An association between silica exposure and MPO-AAV has been consistently observed<sup>24,25</sup>. The high prevalence of silica in the natural environment (for example, in cement) is one proposed explanation for the apparent upsurge in AAV incidence following major earthquakes in 1995 and 2011 in Japan<sup>26,27</sup>. However, this correlation was not replicated in the aftermath of the 2011 earthquake in Christchurch, New Zealand<sup>28</sup>, a discordance that highlights the potential importance of AAV gene–environment interactions. Anecdotally, clinicians commonly observe a disparity in prevalence between urban and rural areas, although the epidemiological data to support this disparity are mixed<sup>29</sup>. For example, in a rural region of the UK, farming has been identified as a risk factor for both GPA and MPA<sup>24</sup>, indirectly implicating pesticide and fertilizer exposure as potential pathogenetic factors. By contrast, pollution, specifically carbon monoxide levels, has been associated with increased AAV risk in population-dense regions of China<sup>30</sup>. Other postulated risk factors include UV light<sup>31</sup>, smoking<sup>32</sup>, solvents<sup>24</sup> and occupational solvent exposure<sup>24</sup>, but no single environmental factor seems to confer a major population-attributable risk. Similarly, specific drugs are responsible for some cases of vasculitis with syndromes similar to AAV (Box 3).

Ultimately, many epidemiological studies have treated AAV as a single disease construct and lack the power to examine the possibility that distinct environmental associations exist across the pathogenetically distinct AAV sub-types.

## **Mechanisms/pathophysiology**

AAVs are characterized by microvascular endothelial inflammation leading to extravascular inflammation, progressive injury, tissue destruction, fibrosis and loss of function. GPA and MPA develop by the loss of immunological T cell and B cell tolerance to one of two neutrophil proteins, PR3 or MPO. Mechanisms of acute injury in GPA and MPA are unique to this group of disorders (see Figure 3 for an overview). Specifically, loss of tolerance leads to the development of ANCAs, autoantibodies that activate neutrophils. ANCA-activated neutrophils localize to vulnerable microvascular beds, where they induce injury and release the autoantigen for presentation by antigen-presenting cells (such as dendritic cells (DCs)), allowing antigen recognition by effector T cells, which mediate further injury. Key elements of loss of tolerance, the generation of effector responses and mechanisms of microvascular injury are summarized in Figure 4 and Figure 5.

The pathogenesis of AAVs has been explored in *in vitro* assays and *in vivo* in animal models and in human studies. In animal studies, MPO-AAV is characterized by anti-MPO autoreactivity affecting the kidneys<sup>33</sup>. Although glomerular and pulmonary vessels are particularly vulnerable, there is little evidence to indicate why some vascular beds are preferentially involved. Furthermore, the mechanisms underpinning the frequent occurrence of granulomatous inflammation in PR3-AAV and its near absence in MPO-AAV are undefined. The response to injury, including the extent of tissue destruction and/or fibrosis, is likely to be contingent on the characteristics of the affected tissue and the intensity and chronicity of local vasculitic inflammation.

## **Genetics**

**GPA and MPA.** Evidence for a genetic contribution to the aetiology of AAVs has come largely from registry studies, which revealed that the familial relative risk (RR 1.56) is similar to that for rheumatoid arthritis (RR 1.5-5.0) but lower than that for other immune-mediated diseases<sup>34</sup>. Identifying robust genetic associations with AAV is challenging due to its fairly low prevalence, although candidate gene studies that utilized cohorts combining patients with GPA and those with MPA, and occasionally those with EGPA, found associations with the major histocompatibility complex (MHC) genes, in particular the *HLA-DPBI\*04:01* allele in PR3-AAV<sup>35</sup>. The European Vasculitis Genetics Consortium reported the first genome-wide association study (GWAS) in AAV<sup>36</sup>, which identified both MHC and non-MHC associations with disease and demonstrated that GPA and MPA are genetically distinct. Furthermore, sub-analyses revealed that the strongest associations were not with the

clinical syndromes per se, but with ANCA specificity. The Vasculitis Clinical Research Consortium<sup>37,38</sup> confirmed these associations and provided the first evidence for genetic variants, for example in *PTPN22*, which are common to both PR3-AAV and MPO-AAV, suggesting that there is also a shared genetic component to these diseases. How much of the clinical similarity between the two syndromes is driven by this shared genetic architecture, rather than antigenic similarity, awaits the outcome of larger GWAS that are better powered to assess associations with PR3-AAV and MPO-AAV separately.

Although the causal variant or variants at each locus remain unresolved, these genetic studies shed light on the underlying disease pathogenesis. Some variants are in genes (such as *PTPN22*) that are associated with other autoimmune diseases<sup>39</sup>, and larger studies are likely to identify further commonalities. Other variants are more specific to AAV. Genetic variants in *SERPINA1* (encoding  $\alpha$ 1-antitrypsin) or *PRTN3* (encoding PR3) lead to increased plasma levels of PR3, suggesting that altered availability of circulating PR3 is a key driver in loss of tolerance to PR3 and the subsequent development of PR3-AAV<sup>40</sup>. The association of *HLA-DPBI\*04:01* with PR3-AAV may simply reflect the role of HLA (MHC) molecules in presenting PR3 peptides to the immune system. However, this HLA-DP molecule also binds to the natural killer (NK) cell receptor NKp44 (also known as NCR2), leading to NK cell activation<sup>41</sup>, which might represent an alternative or additional mechanism that underpins the relationship between *HLA-DP* and PR3-AAV.

**EGPA.** One GWAS examining EGPA identified 11 loci associated with EGPA<sup>42</sup> and demonstrated that EGPA comprises two genetically distinct subtypes, MPO-ANCA<sup>+</sup> EGPA and ANCA<sup>-</sup> EGPA, which align with the clinical differences between these patient subsets<sup>43,44</sup>. Some of the identified loci are associated with eosinophil count in addition to EGPA, and Mendelian randomization revealed that increased risk of eosinophilia underlies susceptibility to EGPA, with additional genetic or environmental factors required for the development of disease.

### ***Environmental factors and infections***

The increasing incidence of AAV in the sixth and later decades of life implies a role for ageing-related factors and various accumulating environmental factors (discussed above), although these factors remain ill-defined. Whereas some observational studies implicate infectious triggers in AAV pathogenesis, the precise infectious agents remain unclear. Mechanistic *in vitro* and *in vivo* animal model studies suggest several ways in which infection might promote loss of tolerance or disease relapse in AAV, including autoantigen exposure



by the formation of neutrophil extracellular traps (NETs) that may be resistant to degradation in AAV<sup>45</sup>, by molecular mimicry (that is, microbial antigens sharing sequence similarity with a host protein) and by the priming of neutrophils for ANCA-induced activation<sup>33</sup> (Figure 4). Some attention has focused on *S. aureus*, with reports of increased rates of nasal carriage in relapsing patients with GPA<sup>22</sup> and experimental data implicating a plasmid-encoded 6-phosphogluconate dehydrogenase sequence from some *S. aureus* strains by molecular mimicry in MPO-AAV<sup>46</sup>

### ***ANCA antigens***

As autoreactivity to either MPO or PR3 is central to pathogenesis in the majority of cases of AAV, the characteristics of the key autoantigens are important. In most patients with AAV, there is a single dominant autoantigen. PR3 and MPO are found primarily in neutrophils and are also produced by monocytes and macrophages. Although PR3 and MPO are mainly synthesized by immature neutrophils, altered DNA methylation and increased expression of *PRTN3* and *MPO* in mature neutrophils is implicated in disease pathogenesis<sup>47</sup>. PR3 and MPO are not only key AAV autoantigens but they also have damaging effects on the endothelium in microvascular inflammation. They are released by multiple mechanisms, including by degranulation and microparticle release, and as constituents of NETs<sup>48</sup>.

PR3 is a 29kDa serine protease with a pro-form and a mature form<sup>49</sup>, which are located within azurophilic granules. The variable expression of PR3 on the surface of neutrophils is in part dependent on co-expression with CD177, which binds to and colocalizes with the  $\beta$ 2-integrin CD11b as part of the CD11b–CD18 complex<sup>50,51</sup>. Cell surface PR3 expression is increased in apoptotic neutrophils, which limits their phagocytic clearance by macrophages and promotes a pro-inflammatory microenvironment<sup>49</sup>. MPO is abundant in human neutrophils as a major component of azurophilic granules. Mature MPO is a highly cationic homodimeric glycoprotein consisting of light and heavy chains, bound to a haem group. The heavy chain is extensively but variably glycosylated<sup>52,53</sup>. Pro-inflammatory stimuli increase cell surface MPO levels, and MPO is released in inflammatory states, where it catalyses the formation of reactive intermediates, including hypohalous acids. Although the AAVs are typically considered systemic autoimmune diseases, each with dominant autoreactivity to only a single autoantigen, other autoantigens have been associated with AAV. These autoantigens include lysosome-associated membrane protein 2 (LAMP2)<sup>54</sup>, complementary PR3 (cPR3) peptides<sup>55,56</sup>, moesin<sup>57</sup>, plasminogen<sup>58,59</sup>, peroxidase<sup>60</sup> and

pentraxin 3<sup>61</sup>. Infection has been implicated in loss of tolerance to some of these antigens. In rats, an epitope in LAMP2, an endolysosomal protein found in myeloid cells and endothelial cells, is identical to part of the bacterial adhesin FimH and induces AAV<sup>54</sup>. [Reactivity to cPR3 peptides, which are derived from the non-coding strand of PR3 cDNA and potentially produced after infection<sup>55</sup>, may trigger anti-PR3 autoreactivity. Although several studies support a role for LAMP2 in MPA or GPA, or cPR3 in the pathogenesis of PR3-AAV, not all reports implicate these alternative antigens in disease<sup>62,63</sup>.

### *Loss of tolerance to ANCA antigens*

**Central and peripheral mechanisms of tolerance.** Central and peripheral mechanisms prevent damaging autoreactivity and autoimmune diseases by maintaining tolerance to self-antigens. In most autoimmune diseases, loss of T cell tolerance allows the emergence of T helper (T<sub>H</sub>) cells that are crucial for autoantibody production by cells of the B cell lineage and also promote tissue injury themselves. Loss of B cell tolerance allows the emergence of autoreactive B cells and plasma cells that produce damaging autoantibodies. Memory T and B cells that develop over time are important in chronicity and relapse, as occurs in AAV (Figure 4). Loss of tolerance to neutrophil proteins occurs prior to the onset of AAV symptoms<sup>64</sup>. Our understanding of this process is imprecise; whereas dysregulated neutrophil apoptosis might predispose to loss of tolerance, there is no clear evidence that this is essential. Defects in both central and peripheral tolerance are present in AAV. Central tolerance to antigens in AAV is imperfect, as autoantigen-specific T cells and ‘natural’ autoantibodies are present in healthy individuals<sup>65</sup>. In the thymus, which is crucial for T cell tolerance, MPO expression is under the control of autoimmune regulator (AIRE) and *Aire*<sup>-/-</sup> mice exhibit increased autoimmunity to MPO<sup>66</sup>. However, AIRE-deficient individuals do not seem to develop AAV, consistent with the existence of multiple layers of tolerance to MPO. Animal studies support a role for regulatory T (T<sub>reg</sub>) cells in limiting autoimmune disease<sup>66</sup>. Furthermore, patients with AAV have functionally defective T<sub>reg</sub> cells and fewer regulatory B (B<sub>reg</sub>) cells than healthy individuals. Their T<sub>reg</sub> cells have a diminished capacity to suppress effector responses *ex vivo*<sup>67-70</sup>, with these abnormal T<sub>reg</sub> cells having an effector T helper (T<sub>H</sub>17)-like phenotype. At least some being antigen-specific<sup>68,71</sup>. To better understand loss of tolerance and to move towards harnessing tolerogenic therapeutic platforms and developing more precise diagnostic tools and biomarkers, immunodominant T cell and B cell epitopes have been defined for MPO but not for PR3<sup>71-74</sup>. Conformational and linear B cell epitopes exist for both MPO-ANCA and PR3-ANCA<sup>75-77</sup>. An MHC-promiscuous CD4<sup>+</sup> T cell MPO

epitope overlaps with a linear B cell epitope and a CD8<sup>+</sup> T cell epitope<sup>71-74</sup>, and is nephritogenic in mice. Knowledge of these epitopes enables translational strategies to improve disease monitoring and re-establish tolerance.

**Maintenance of autoreactive B cells.** After the loss of tolerance, the survival of autoreactive lymphocytes promotes ongoing and chronic disease (Figure 4). In the case of AAV, the B cell survival factor B cell-activating factor (BAFF; also known as TNFSF13B and BLyS) is produced by ANCA-stimulated neutrophils, and serum BAFF levels are elevated in patients with AAV<sup>78,79</sup>, suggesting that interactions between BAFF and its receptors on autoreactive B cells and plasmablasts promote autoimmunity. After therapeutic B cell depletion, BAFF may promote relapse by stimulating the recovery of autoreactive B cells. B cells and B cell aggregates are present in more chronic lesions, implying additional roles for antigen-specific B cells beyond antibody production, either as pro-inflammatory cells or as antigen-presenting cells<sup>80,81</sup>.

### *The role of ANCA and neutrophils*

#### **ANCAs activate neutrophils and monocytes.**

A critical consequence of loss of T and B cell tolerance is the production of ANCAs that bind to and activate neutrophils, so that they adhere in vulnerable microvascular beds and induce injury (Figure 3; Figure 5). ANCAs are usually of the IgG isotype, but IgA and IgM isotypes have also been reported<sup>82,83</sup>. ANCAs bind to their autoantigen, activate neutrophils and initiate injury<sup>84</sup>. *In vitro* studies support a model whereby both ANCA F(ab')<sub>2</sub> fragment–antigen and Fc–FcγR interactions are required for neutrophil activation, by G-protein-coupled pathways and SYK, respectively<sup>85,86</sup>. The effects of ANCAs on neutrophils include changes in adhesion molecule expression<sup>87,88</sup>, alterations in cytoskeletal proteins (such as polymerization of F-actin)<sup>89</sup> and the generation of reactive oxygen species<sup>90</sup>. The release of inflammatory mediators occurs by several mechanisms, including degranulation, NET formation and the release of microparticles<sup>91</sup>. The release of cytokines, proteases and other molecules induces necrotizing crescentic glomerulonephritis in mice<sup>92</sup>. A report of placental MPO-ANCA transfer to a neonate with pulmonary haemorrhage and microscopic haematuria supports a role for ANCAs in AAV pathogenesis<sup>93</sup>. The *in vivo* pathogenicity of ANCA-activated neutrophils has been convincingly demonstrated in experimental MPO-AAV<sup>92,94</sup> and evidence also exists for their pathogenetic role in PR3-AAV<sup>95,96</sup>. ANCAs also activate

monocytes *ex vivo*, as monocytes express PR3 and MPO, albeit at lower levels than neutrophils. Compared with studies in neutrophils, the pathogenic implications of any direct effects of ANCAs on monocytes is less certain<sup>97,98</sup>. Whether the 5–10% of patients with GPA or MPA who are ANCA<sup>-</sup> have a relevant autoantibody is unresolved. Patients may be MPO-ANCA<sup>+</sup> but their ANCAs may bind to an epitope that is masked in conventional assays<sup>73</sup> or to other antigens, including LAMP2 (ref.<sup>99</sup>) or pentraxin 3 (ref.<sup>61</sup>). There are ANCA epitopes that are derived from pathogenic sequences as well as from endogenous proteins, while other factors, including ANCA sialylation and glycosylation, may contribute to the inconsistent relationship between ANCA seropositivity and disease activity<sup>73,100,101</sup>.

**Neutrophil priming and activation state.** Although ANCAs may activate neutrophils without additional inflammatory signals, neutrophil priming by exogenous or endogenous pro-inflammatory signals promotes the damaging effects of these cells after ANCA-induced activation (Figure 3, Figure 4). In addition to the functional consequences of genetic variation in *PRTN3* and its inhibitor *SERPINA1*<sup>40</sup> and epigenetically mediated increases in PR3 and MPO expression<sup>47,102</sup>, neutrophils from patients with AAV, even from those in remission, produce more intracellular ROS, display greater NET release and have a greater capacity to activate the alternative pathway of complement (see below)<sup>103,104</sup>. The relative contribution of neutrophil intrinsic properties versus their response to priming events is unclear, but both are likely to be relevant. Neutrophil priming in AAV occurs by several mechanisms, of which the most well defined are the complement system (see below), Toll-like receptor (TLR) signalling and cytokines (including TNF and IL-18)<sup>33</sup>. TLRs are expressed on several relevant cell types, including neutrophils, monocytes and microvascular endothelial cells. Engagement of TLRs by pathogen-associated molecular patterns (PAMPs) or in sterile inflammation by damage-associated molecular patterns (DAMPs) activates neutrophils and the endothelium<sup>105-108</sup>.

**Complement activation via the alternative pathway.** Complement, specifically the C5a receptor (C5aR), is a validated therapeutic target in acute AAV<sup>109-111</sup>. Evidence implicates neutrophil cell surface C5a–C5aR interactions in neutrophil priming and activation<sup>109,112-115</sup>. Although paracrine and autocrine sources of C5a are possible, circulating C5a may be more important<sup>116</sup>, and little evidence exists for a role for the membrane attack complex (which comprises the complement subunits C5b, C6, C7, C8 and C9)<sup>109</sup> in neutrophil priming and activation. In addition to activating neutrophils, C5a enhances neutrophil retention in the microvasculature and promotes antigen recognition by T cells by activating dendritic cells<sup>115</sup>. Three different pathways (classical, lectin and alternative) can be responsible for C5

activation, and in AAV evidence points to the alternative pathway being the key to pathological C5a–C5aR interactions. In mice, deficiency of factor B (which is important for the alternative pathway), but not C4 (which is important for the classical and lectin pathways) was protective in experimental anti-MPO antibody-induced glomerulonephritis<sup>112</sup>, while factor Bb immunostaining in glomeruli correlated with renal injury<sup>117</sup>. Although not prominent, complement deposition is present in the kidneys of some patients with AAV and may also be relevant to tissue pathology<sup>118</sup>. Low serum C3 levels in patients with AAV with renal involvement are associated with unfavourable outcomes<sup>119,120</sup>. Other potential roles for complement in AAV include tissue-damaging interactions with pattern recognition receptors and with pro-coagulant molecules<sup>118</sup>.

**ANCA-induced neutrophil recruitment to the microvasculature.** ANCA-activated neutrophils mediate microvascular injury by adhering to microvascular endothelial cells in vulnerable tissues, mediated by integrin–endothelial adhesion molecule and chemokine–chemokine receptor interactions (Figure 5). ANCAs enhance contact between neutrophils and activated endothelial cells via  $\beta 2$  integrins and CXC chemokine receptor 2 (CXCR2) in flow chamber assays<sup>121</sup>. *In vivo* microscopy studies using inflamed post-capillary venules showed incremental recruitment of ANCA-activated neutrophils, consistent with the aforementioned mechanisms elucidated *in vitro*<sup>122,123</sup>. However, in the glomerulus, the mechanisms of ANCA-induced neutrophil adhesion are dependent on the ANCA concentration, with adhesion mediated by  $\beta 2$ -integrin at low ANCA levels and by  $\alpha 4$ -integrin at high ANCA levels, but without additional stimuli (such as lipopolysaccharide) that themselves induce leukocyte recruitment to glomeruli<sup>88</sup>.

### ***T cells and cellular immunity***

In addition to humoral immunity, cellular immunity is important in AAV pathogenesis, as CD4<sup>+</sup> T cells promote ANCA production and CD4<sup>+</sup> T cells and CD8<sup>+</sup> T cells recognize ANCA antigens deposited in peripheral tissues by activated neutrophils (Figures 3 and 5). The class-switched, high-affinity nature of IgG ANCA implies T cell help by T follicular helper (T<sub>FH</sub>) cells<sup>124</sup>, the abundance of which is increased in patients with GPA<sup>125</sup>. CD4<sup>+</sup> effector memory T cell abundance is increased in the blood and urine in patients with AAV<sup>126</sup> and CD4<sup>+</sup> T cells and CD8<sup>+</sup> T cells are present in lesions<sup>127-129</sup>. Both T<sub>H1</sub> and T<sub>H17</sub> effector cytokine profiles have been observed in patients with AAV<sup>130,131</sup>, including T<sub>H1</sub> profiles in granulomatous lesions<sup>132</sup>. CD4<sup>+</sup>CD28<sup>-</sup> cytotoxic T cells found in the blood of

patients with GPA are linked to cytomegalovirus (CMV) infection, which is itself associated with poor AAV outcomes<sup>133</sup>. Furthermore, subclinical CMV infection and reactivation in immunosuppressed patients with AAV may impair immune responses to infection, as the antiviral drug valganciclovir improved vaccine responses in CMV-seropositive patients with AAV<sup>134</sup>.

Analyses of CD8<sup>+</sup> T cell transcriptomes of patients with active AAV at diagnosis reveal that patients can be stratified into two groups correlating with differences in long-term outcomes<sup>135</sup>. CD8<sup>+</sup> T cell and CD4<sup>+</sup> T cell transcriptome data shows that reduced expression of genes linked to T cell exhaustion correlates with relapsing disease<sup>136</sup>. The correlation between exhaustion, with progressive loss of effector T cell function, and favourable disease outcome extends across a range of autoimmune and autoinflammatory diseases<sup>136</sup> and implies that therapeutics targeting this process may improve the management of AAV.

Effector T cells participate in tissue injury in AAV. When ANCA-activated neutrophils localize to inflamed tissues, they release their autoantigen<sup>129,137</sup>. The widespread deposition of the autoantigens in inflamed tissues in AAV makes these antigens available for recognition by effector T cells. Experimental studies, mostly in a mouse model of MPO-ANCA-induced glomerulonephritis, demonstrate a role for both MPO-specific T<sub>H</sub>17 cells (earlier) and T<sub>H</sub>1 cells (later)<sup>138</sup>, while CD8<sup>+</sup> T cells also cause experimental injury<sup>74</sup>.

### ***Monocytes and macrophages***

Macrophages are prominent in AAV lesions, are the most abundant immune cell type in glomeruli<sup>128,129</sup>, and are important in both acute and chronic injury (Figure 5). ANCAs bind to intermediate monocytes that release pro-inflammatory cytokines and chemokines<sup>97,98</sup>, while in a mouse model of MPO-ANCA-induced glomerulonephritis, inflammatory monocytes participate in glomerular crescent formation<sup>139</sup>. Macrophages are activated by effector T<sub>H</sub>1 and T<sub>H</sub>17 cells at sites of injury, participate in granuloma formation and form macrophage extracellular traps in tissues<sup>129</sup>, and in chronic inflammation, profibrotic macrophages contribute to disease progression and damage.

### ***The pathogenesis of EGPA***

The pathogenesis of EGPA is not well understood but is likely to be substantially different to both GPA and MPA, although the extent of the similarities and differences is unclear. Furthermore, the differing clinical presentations, genetic associations and response to therapies of MPO-ANCA<sup>+</sup> and ANCA<sup>-</sup> patients with EGPA imply distinct elements to the

pathogenesis of these forms of EGPA<sup>42-44</sup>. Genetic associations with genes that influence eosinophil numbers and those that underlie asthma are shared by both groups of patients. However, in ANCA<sup>-</sup> patients with EGPA, the association with genes affecting barrier function (including *GPA33*) implies a role for mucosal dysfunction, whereas in MPO-ANCA<sup>+</sup> patients with EGPA, the HLA associations are consistent with MPO-ANCA<sup>+</sup> EGPA being an eosinophilic autoimmune disease.

In addition to genetic studies, observational studies implicate eosinophil dysfunction in the pathogenesis of EGPA. Eosinophil-mediated injury by the release of granule proteins can induce tissue-resident cells to release pro-inflammatory mediators. Some of these tissue cell-derived molecules, such as IL-25, affect both adaptive immune cells (type 2 T helper (T<sub>H</sub>2) cells) and innate immune cells (group 2 innate lymphoid cells (ILC2s))<sup>140</sup>. Both T<sub>H</sub>2 cells and ILC2s produce IL-5 and IL-13, which are key cytokines that promote eosinophil proliferation and function<sup>141,142</sup>. The role of IL-5 has been validated by trials of the anti-IL-5 monoclonal antibody mepolizumab in patients with EGPA<sup>143</sup>. T<sub>H</sub>2 cell-associated chemokines, such as CC-chemokine ligand 26 (CCL26; also known as eotaxin 3), enhance eosinophil recruitment<sup>142</sup>. Other T cell-associated cytokines are also elevated in patients with EGPA, but to date there is no clear evidence that a particular pattern of cytokine or chemokine production characterizes MPO-ANCA<sup>+</sup> or ANCA<sup>-</sup> EGPA. A direct relationship between MPO-ANCA and eosinophils has not yet been demonstrated in MPO-ANCA<sup>+</sup> patients with EGPA.

### ***Chronicity and relapse in AAV***

The pathogenesis of AAV is characterized by complex pathways to tissue injury and damage involving both humoral and cellular effector systems. Much of the work on the pathogenesis of AAV has been in systems modelling acute injury. Although largely unexplored, mechanisms operative in disease induction are also likely to be relevant to relapse. Some observational evidence points towards infection, in part related to chronic sinonasal mucosal damage, being important in relapse, and determinants of T cell activity and exhaustion may also be able to identify those at high risk of relapse<sup>22,135,144</sup>.

## **Diagnosis, screening and prevention**

### ***Diagnostic and classification criteria***

Clear definitions of GPA, MPA, EGPA and other systemic vasculitides are provided by the updated 2012 Chapel Hill Consensus Conference (CHCC)<sup>145</sup>, which, as the name implies, was consensus- rather than data-driven (Figure 1, Table 1). In 2006, an algorithm was developed for applying the 1990 American College of Rheumatology (ACR) classification, 1993 CHCC definitions and ANCA specificity to streamline classification of patients with GPA, MPA and EGPA for epidemiological studies and clinical trial purposes, but cannot be regarded as providing diagnostic criteria for clinical practice<sup>146</sup>. The current Diagnostic and Classification Criteria for Vasculitis (DCVAS) study further develops classification and diagnostic criteria in AAV<sup>147</sup>.

### ***Clinical presentation***

The different types of AAV share non-specific clinical features of systemic inflammation, such as weight loss, malaise, fatigue, arthralgia and myalgia, which relate to the systemic autoimmune pathophysiology (Box 2, Figure 6). AAVs are frequently initially misdiagnosed as infections, malignancies, depression or osteoarthritis, especially in older patients<sup>148</sup>. This is pertinent, as some conditions, such as infective endocarditis, not only share clinical features with AAV but may also have a positive ANCA test by indirect immunofluorescence (see Box 1). Although asthma is a typical early feature of EGPA, all forms of AAV can present with manifestations relating to small vessel vasculitic lesions and dysfunction of any organ<sup>149</sup>. Various organ systems and tissues are affected in AAV, albeit at different frequencies in GPA, MPA and EGPA (Figure 6).

Necrotizing or granulomatous lesions can affect the ear, nose and throat (ENT) tract, and cause symptoms of chronic rhinitis, sinusitis or laryngitis. Similar processes in the respiratory tract, including pulmonary capillaritis, present as shortness of breath, cough and haemoptysis due to pulmonary haemorrhage (Figure 6). Cavitating lung nodules can be present. Ophthalmological manifestations include granulomatous orbital or retroorbital masses, anterior segment inflammation, retinal vasculitis or optic neuritis. A purpurial or petechial rash is the most common dermal manifestation, with necrotizing dermal vasculitis and other non-vasculitic skin rashes also occurring. Kidney involvement usually presents as rapid-progressive glomerulonephritis with haematuria, proteinuria and hypertension. Interstitial nephritis without glomerular involvement occurs but is not common. The



peripheral nervous system is typically affected by mononeuritis multiplex, due to focal vasculitis of the vasa nervorum.

EGPA is characterized by the near-universal presence of asthma, often for years prior to the onset of eosinophilia and eosinophilic tissue inflammation, and difficult to control asthma not infrequently persists even after treatment of EGPA. A subset of patients with EGPA do exhibit frank vasculitis. The tissues affected in EGPA are similar to those affected to GPA and MPA, albeit at different frequencies (Figure 6). In particular, cardiomyopathy due to eosinophilic myocarditis is not uncommon in EGPA and can be life-threatening. Some of the differences in the manifestations of EGPA and MPA or GPA, such as urticaria and eosinophilic pneumonia, align with its characteristic eosinophil-dominated inflammation.

Some patients with GPA or MPA present with vasculitis limited to a single organ, such as the kidneys, ENT tract or lungs, which may represent the early stages of AAV. However, in MPO-ANCA<sup>+</sup> patients with MPA, isolated renal disease or isolated pulmonary fibrosis is not infrequent. The recognition of pulmonary fibrosis as a feature of MPA in MPO-ANCA<sup>+</sup> patients, often as the sole manifestation of disease, has been of some interest<sup>150</sup>. This presentation may be more common in Japan<sup>151,152</sup>, although it does occur in diverse geographical locations. MPO-ANCA-associated pulmonary fibrosis may result from chronic low-grade pulmonary inflammation, but this is not clear. A minority of MPO-ANCA<sup>+</sup> patients with MPA also have anti-glomerular basement membrane antibodies and exhibit a hybrid disease phenotype<sup>153</sup>, whereas individuals with systemic lupus erythematosus or systemic sclerosis can be MPO-ANCA<sup>+</sup> and develop some features of AAV, especially the vasculitic pattern of glomerulonephritis<sup>154-156</sup>. As initial clinical presentations are diverse and often nonspecific, AAV is an infrequent but important differential diagnosis for many conditions across many medical disciplines. AAV can remain undiagnosed for months or years until ANCA testing is performed. In view of the rarity of AAV and the existence of mimics of vasculitis, the diagnosis should be reviewed periodically, particularly in cases of inadequate response to treatment or if not all disease manifestations are consistent with AAV.

Children with AAV can develop a similar range of clinical features to adults. Constitutional, ENT, renal and pulmonary manifestations are most commonly found at presentation<sup>15</sup>. However, some features may be more common in children. For example, a French Vasculitis Study Group Registry-based case control study, with most children having GPA, found that children were more likely to have fever at onset than adults<sup>157</sup>. Rates of renal involvement were similar, but myalgia and peripheral neuropathy were less common.

Children were more likely to relapse than adults and more frequently accrued damage, especially ENT damage, over time<sup>15,157</sup>.

### ***Clinical syndromes and antigenic specificity***

MPA and GPA are strongly associated with MPO-ANCA and PR3-ANCA, respectively, whereas EGPA can be either ANCA<sup>+</sup> (mostly MPO-ANCA) or ANCA<sup>-</sup> (Table 1). Global variations in clinical manifestations reflect the relative rates of MPA (MPO-AAV) and GPA (PR3-AAV) discussed in Epidemiology (above), with, for example, clinical features associated with MPA being more common in East Asia. Given the presence of overlapping signs and symptoms but also clear clinical differences (described in Table 1 and Box 2), another approach to disease classification is by the autoantigen involved (that is, PR3-AAV and MPO-AAV), although this approach also has limitations: ANCA can be negative, MPO-ANCA can be false positive in patients without vasculitis<sup>158</sup>, assay standardization is lacking, and not all countries have ready access to high-quality assays. Nonetheless, genetic and other studies demonstrate that the clinical differences between PR3-AAV and MPO-AAV are greater than those between GPA and MPA<sup>36,159</sup>, indicating that, from a pathogenetic perspective, antigen specificity is important. Furthermore, post hoc analyses of a large multicentre study suggest that PR3-ANCA<sup>+</sup> patients may respond better to the biologic agent rituximab than to the immunosuppressants cyclophosphamide and azathioprine, whereas these treatments seem to be equally effective in MPO-ANCA<sup>+</sup> patients<sup>160</sup>. ANCA specificity also predicts differences in long-term prognosis: PR3-ANCA<sup>+</sup> patients are at higher risk of relapse than MPO-ANCA<sup>+</sup> patients<sup>161</sup>. In EGPA, the presence or absence of ANCA in patients defines its two subtypes. Most patients with EGPA are ANCA<sup>-</sup>, but ~40% are (or have been) ANCA<sup>+</sup>, almost always MPO-ANCA. Clinically, renal involvement and peripheral nerve involvement are more common in ANCA<sup>+</sup> patients with EGPA, with cardiomyopathy and possibly pulmonary infiltrates being more common in those who are ANCA<sup>-</sup><sup>43,44</sup>.

### ***Biomarkers***

ANCAs are unique markers that support the classification and diagnosis of GPA, MPA and EGPA. The indirect immunofluorescence test has been the initial screening test for ANCA, but high-quality immunoassays are preferred<sup>162</sup> (Box 1). The ANCA test is useful in monitoring: patients with persistently elevated ANCA, as those with a reappearance of ANCA or an increase in ANCA levels have an increased likelihood of relapse, although restarting or intensifying therapy based on ANCA alone is not recommended. This aligns with an association between

earlier relapse and a higher frequency of memory B cells<sup>163</sup>, while a higher plasmablast percentage during remission is also predictive of relapse<sup>164</sup>. The acute-phase markers C-reactive protein and erythrocyte sedimentation rate are of limited use in evaluating disease activity due to their lack of specificity. Other disease activity biomarkers, including urinary soluble CD163, are under evaluation for use in assessing disease activity but await validation for routine clinical use<sup>165-167</sup>.

### ***Assessment of disease activity and chronic damage***

Patients with AAV should have access to medical specialists with expertise in the complex care of vasculitis, ideally in a multidisciplinary context. Where needed, early referral to specialists experienced in assessing specific organ systems involved in AAV improves the quality of disease assessment. Managing patients at, or in collaboration with, a dedicated vasculitis centre provides opportunities to participate in clinical trials. Disease assessments in AAV should target activity, damage, prognosis and function or QOL<sup>168</sup>. Validated tools to assess disease activity include the Birmingham Vasculitis Activity Score (BVAS) and the Five Factor Score (FFS). The BVAS comprises ten systems (one general, eight organ-specific and one open) and is used in clinical research to assess disease activity, remission, response to therapy and flare<sup>169</sup>. Only items that are newly present or worsening over the preceding four weeks are recorded. Disease states of active disease, remission, and refractory disease are defined as follows: a BVAS score of 0 represents remission,  $\geq 1$  represents active disease, and refractory disease is active disease despite treatment. Consensus definitions have been recommended by the European League Against Rheumatism (EULAR) for disease activity states, including remission, response, refractory disease and relapse, which can be useful for clinical trials and studies<sup>170</sup>. The 1996 FFS is based on serum creatinine, proteinuria, cardiomyopathy, gastrointestinal involvement and central nervous system involvement, and has been validated for MPA and EGPA but not GPA. The revised 2009 FFS includes serum creatinine, age (>65 years), cardiomyopathy, gastrointestinal involvement and absence of ENT manifestations (GPA and EGPA only) but this version requires validation<sup>171</sup>. To assess chronic damage, both from the disease itself and from treatments, such as glucocorticoids, the Vasculitis Damage Index (VDI) predicts mortality risk and scores 10 systems, namely musculoskeletal, skin and mucous membranes, ocular, ENT, pulmonary, cardiovascular, the peripheral vasculature, gastrointestinal, renal and neuropsychiatric systems, with an eleventh category for other systems<sup>172</sup>.

The BVAS and VDI are approved by the Outcomes Measures in Rheumatology (OMERACT) group and EULAR as key outcome measures to record disease activity and damage, respectively, in clinical trials<sup>173</sup>. Measures of QOL are important in the assessment of AAV. Generic tools have thus far been used but AAV-specific instruments have been developed (see QOL section, below).

### ***Association with cardiovascular events***

Increased risk of cardiovascular event has been documented in patients with AAV<sup>174</sup>. Indeed, during 5-years of follow up of four European Vasculitis Study Group trials of GPA and MPA, a cardiovascular event, defined as cardiovascular death, stroke, myocardial infarction, coronary artery bypass graft, or percutaneous coronary intervention, occurred in 14% of patients. PR3-ANCA<sup>+</sup> status was associated with a reduced cardiovascular risk compared to MPO-ANCA<sup>+</sup> or ANCA<sup>-</sup> status<sup>175</sup>.

Dysfunction of the immune and coagulation systems contribute to an increased risk of venous thromboembolism<sup>176</sup>, especially during active disease<sup>177</sup>. An increased incidence of venous thromboembolism, in both typical and atypical sites, and pulmonary embolism has also been reported in GPA, MPA and EGPA<sup>178</sup>.

### ***Role of imaging and biopsy***

A chest X-ray helps dissect the underlying pathology in patients with pulmonary symptoms (Figure 6), although CT has a higher sensitivity in detecting pulmonary nodules, cavities and alveolar opacities, as well as masses in the retro-orbital space, paranasal sinuses and the mastoids<sup>179</sup>. Iodinated contrast agents are not required for these studies. High-resolution CT (HRCT) of the chest may be helpful for detecting interstitial pneumonia; a study of HRCT involving Japanese patients with MPA, all but three of whom were MPO-ANCA<sup>+</sup>, demonstrated abnormalities in 93% of patients, with 51% having interstitial pneumonia<sup>152</sup>. Although dynamic expiratory CT and other modalities have been advocated as potentially useful in detecting subglottic stenosis or endobronchial disease<sup>180</sup>, advanced imaging techniques may not be widely available or may only be available as research tools.

The high diagnostic specificity for AAV of a positive ELISA test for MPO-ANCA or PR3-ANCA may, in the appropriate clinical setting, preclude the need for biopsies. However, renal, lung, skin or other tissue biopsy is often important in establishing the diagnosis and may, especially in the case of nasal biopsy, provide the first evidence for AAV, particularly GPA. In the appropriate clinical context, granulomatous rhinitis or pneumonitis, and ‘pauci-immune’

glomerulonephritis are more specific for AAV than dermal leukocytoclastic vasculitis. Ultrasonography-guided percutaneous kidney biopsy, although not mandatory, in the presence of haematuria and/or proteinuria can help make an initial diagnosis of AAV. Kidney biopsy can also be used to diagnose relapse, establish the degree of chronicity of nephritis and, in chronic disease, may be useful in determining whether impaired kidney function and proteinuria is related to active vasculitis or irreversible damage. Biopsy samples from patients with suspected AAV should be assessed by an experienced pathologist.

### ***Pathology***

Although sharing many features, the different forms of AAV show histopathological differences (Figure 7). Fibrinoid necrosis and inflammation of small vessels, sometimes accompanied by thrombosis, is the hallmark of acute injury in all forms of AAV<sup>181</sup>. In MPA, these features are present without other defining features, such as the granulomas in GPA or the prominent eosinophilic infiltrates in EGPA. Chronic lesions are characterized by transmural scarring with loss of the elastic internal lamina. Larger blood vessels can be affected, with leukocytic infiltrates and fibrinoid necrosis, as seen in polyarteritis nodosa. However, the involvement of larger vessels should not be interpreted as an ‘overlap’ with other forms of vasculitis when small-vessel (capillary and arterioles) involvement is also present. Although the histopathology of EGPA features necrotizing small-vessel vasculitis (as in GPA and MPA), an abundance of eosinophils is its defining feature. In the early stages of disease, eosinophilic infiltrates (but no necrosis) are present in tissues or in blood vessel walls, whereas in later stages of disease, eosinophils also surround the epithelioid cells within granulomas, and necrosis is present.

**Renal involvement.** In the kidneys, the characteristic lesion in AAV is segmental necrosis of glomerular capillary loops, with little or no deposition of immunoglobulin or complement, termed ‘pauci-immune’ focal necrotizing (and crescentic) glomerulonephritis. Different lesions in different glomeruli within the same biopsy specimen reveal the asynchronous nature of the vasculitic injury. Acute glomerular injury is characterized by segmental necrosis with extravasation of fibrin and erythrocytes into the urinary space, followed by proliferation of parietal glomerular epithelial cells forming a cellular crescent. Destruction of Bowman’s capsule, the basement membrane surrounding the glomerulus, results from glomerular and periglomerular inflammation. These inflammatory changes lead ultimately to glomerulosclerosis that can be either segmental or global and represent the evolution of injury over days to months.

Glomerular lesions are used to stage renal disease in AAV by a histopathological classification<sup>182</sup>, where the dominant lesion is linked to outcomes. There are four patterns of injury, namely sclerotic ( $\geq 50\%$  globally sclerosed glomeruli, worst outcome), focal ( $\geq 50\%$  normal glomeruli, best outcome), crescentic ( $\geq 50\%$  cellular crescents, intermediate outcome) and mixed (no single dominant type of lesion, outcome better than the sclerotic but worse than the crescentic class). In clinical settings, this classification has been validated by some but not all studies, especially with regard to prognosis in the crescentic and mixed classes<sup>183</sup>. The classification does not currently include the extent of tubulointerstitial lesions or renal function. A further classification system has been proposed that includes these factors, together with the proportion of normal glomeruli at biopsy<sup>184</sup>.

Glomerular injury is often accompanied by inflammation of small arteries and a variable interstitial infiltrate around necrotic lesions, either glomeruli or blood vessels, in a granuloma-like pattern, but multinucleated giant cells are rarely seen. The presence of sarcoid-type granulomas in renal biopsy specimens should lead to consideration of other diagnoses, such as renal sarcoidosis or an allergic drug reaction.

**Respiratory tract involvement.** In GPA, upper and lower respiratory tract injury classically involves granulomatous inflammation. Small granulomas are composed of sometimes loose aggregates of epithelioid cells. The granulomatous inflammation often shows central necrosis containing nuclear fragments of granulocytes, is surrounded by a palisade of epithelioid cells and, in EGPA, by large numbers of eosinophils. Granulomatous inflammation and areas of necrosis are often confluent, with a ‘geographic’ appearance at low magnification. Multinucleated giant cells are almost invariably present and are pathognomonic for GPA or EGPA when seen in isolation in lung or upper airway biopsy samples, cytology specimens from bronchoalveolar lavage or nasal swabs taken when clinical features suggestive of AAV are present.

In the lungs, neutrophilic capillaritis is common to all forms of AAV. As vasculitic changes can be difficult to detect in small biopsy samples, samples should also be stained with trichrome and Elastica van Gieson for optimal detection of any disruption to alveolar or vessel walls, small areas of necrosis in arterioles and arteries, vascular inflammation and characteristic scars affecting the full thickness of the vessel wall, indicating past injury. Acute injury may consist of only non-specific inflammation or features resembling bronchiolitis obliterans and organizing pneumonia. However, signs of recurrent alveolar haemorrhage with extravasation of erythrocytes, variable numbers of siderophages or small areas of fibrin, necrosis or micro-abscesses are suggestive of AAV. In the nose, necrotizing granulomatous inflammation in GPA

can cause severe soft tissue destruction, including of the nasal cartilage. Large ulcers with denuded epithelium can be seen. Granulomatous inflammation is also a feature of nasal involvement in EGPA, sometimes with eosinophilic necrosis but more often containing epithelioid cell aggregates surrounded by a dense eosinophil infiltrate.

**Other organ and tissue involvement.** Similar vasculitic changes are found in other tissues, such as the heart, brain or gastrointestinal tract. In the gut, the finding of otherwise unexplained necrosis or haemorrhagic infarction should prompt extensive examination of mesenteric vessels for vasculitis. Although most often seen in isolation, dermal leukocytoclastic vasculitis can represent systemic disease. Involvement of the peripheral nervous system as mononeuritis or mononeuritis multiplex is due to ischaemia caused by vasculitic inflammation of the vasa nervorum<sup>185</sup>.

### ***Prognosis***

The 5-year survival rates for AAV have been steadily rising to around 70–80% over the past 40–50 years, following the introduction of immunosuppressant therapies, increasing proficiency in their use and the introduction of ANCA testing, which are promoting earlier diagnosis and improvements in supportive care<sup>186</sup>. Data also suggest that there are ongoing improvements in mortality and end-stage kidney disease rates over the past decades in the USA<sup>187,188</sup>. Globally, AAV mortality rates, based on the International Classification of Diseases 10th Revision (ICD-10) data, are falling<sup>189</sup>. These data, though imperfect, include mortality rates from many countries and suggest, using 2014 data, similar age-standardized mortality rates in North America and Europe, with lower rates in Latin America and higher rates in Oceania. Data from Asia and Africa were limited.

Initial clinical factors influencing outcomes include older age, severity of renal dysfunction, the presence of pulmonary haemorrhage (in some series) and disease activity measured by BVAS<sup>186</sup>; the findings on renal biopsy reflect severity of renal dysfunction and correlate with outcomes<sup>182</sup>. The 2009 FFS can also be applied to prognosis, since four factors are associated with a poor prognosis (age, renal insufficiency, cardiac involvement, and gastrointestinal manifestations, where each is accorded +1 point); the fifth factor, ENT manifestations, is associated with a better outcome, and the absence of ENT symptoms scores 1 point<sup>171</sup>. Ongoing factors influencing survival include infectious burden, development of first relapse within one year and the amount of chronic damage measured by the VDI<sup>175</sup>. As the VDI encompasses both disease and treatment-related damage, the risks of immunosuppressant drugs and glucocorticoids will also have an effect. Finally, other factors, include a diagnosis of GPA,

presence of PR3-ANCA and upper or lower respiratory involvement, seem to increase the likelihood of relapse, currently quoted as ~50% by five years after diagnosis<sup>190</sup>.



## **Management**

Following diagnosis, disease assessment in AAV should consider activity and damage (tools for assessing activity and damage are discussed earlier), prognosis (see above) and function or QOL (described below). Broadly speaking, therapy can be divided into a phase aiming to induce remission with more intense therapy and a subsequent period where the goal is to maintain remission (Figure 8; clinical trials in GPA and MPA are summarized in Table 2 and Table 3). The goal of induction therapy is to achieve remission by three months that is then sustained. Later remission, early relapse or refractory disease is associated with worse outcomes<sup>191</sup>.

Treatment should be initiated as soon as a diagnosis of AAV is at least probable and appropriate safety investigations have been performed, as delays in diagnosis and treatment lead to worse outcomes. Initiation of treatment, especially in the setting of severe renal or lung disease, should not be delayed by the need to obtain a biopsy, as several days of treatment usually does not markedly reduce the diagnostic yield of a biopsy.

### ***Remission induction***

Prior to initiation of therapy, there should be an assessment of any concurrent infection and any risk of infection, including chronic viral infections (which should be screened for) or immunodeficiency, and for conditions, such as diabetes mellitus, osteoporosis and psychiatric disorders, that increase risk of glucocorticoid-associated adverse events.

**Glucocorticoids.** Oral glucocorticoids (such as prednisone, prednisolone and others) are commenced when a diagnosis of AAV seems probable. These drugs exert a rapid effect. The initial dose for severe disease is 1 mg/kg daily of prednisone (or equivalent). The PEXIVAS trial demonstrated that a regimen that rapidly reduces the dose to 20 mg daily by 7 weeks and 5 mg daily by 19 weeks is as effective and safer than more traditional, higher-dose regimens<sup>192</sup>. Glucocorticoids are the major modifiable cause of adverse events during the induction period and lower-dose regimens reduce the risk of severe infections. There is no consensus for glucocorticoid dosing in non-severe disease and lower initial doses may be used. The RITAZAREM trial demonstrated that patients with relapsing disease respond well to lower initial doses, such as 0.5 mg/kg daily, whether or not they had severe disease<sup>193</sup>. Intravenous pulse methylprednisolone (total dose 1–3 g) at the initiation of therapy for severe disease is conventionally administered, but its benefits and harms have not been adequately studied.

**Other immunosuppressive or immunomodulating drugs.** The combination of glucocorticoids with either cyclophosphamide or rituximab is the current standard of care for remission induction in severe disease, although as further evidence supporting the efficacy of rituximab emerges, it is becoming the preferred induction agent for many patient subgroups, such as children and adults for whom the preservation of fertility is important, PR3-ANCA<sup>+</sup> patients and in relapsing disease. However, rituximab is more expensive and globally is not as available as cyclophosphamide. Cyclophosphamide dosing is either by intermittent intravenous pulse treatments or by a daily oral dose. Doses are reduced for increasing age and renal impairment; either regimen is usually discontinued after 3–6 months, with subsequent initiation of remission maintenance therapy. Close monitoring is essential to minimize the risk of myelotoxicity. Intravenous regimens deliver ~50% of the cumulative dose compared with daily oral dosing, with similar remission rates, but lower cyclophosphamide exposure is associated with a higher subsequent relapse risk<sup>194,195</sup>.

In two randomized trials, rituximab was non-inferior to cyclophosphamide for remission induction and, in a post-hoc analysis of the RAVE trial, superior for PR3-ANCA<sup>+</sup> patients or those with relapsing disease<sup>160,196,197</sup>. These trials used 375 mg/m<sup>2</sup> weekly for a total of four doses, although two 1,000 mg doses (two-week interval) are also widely used. There is a paucity of comparative data on the use of either cyclophosphamide or rituximab in patients with low GFR (for example, <20 ml/min/1.73 m<sup>2</sup>), with a lower dose of cyclophosphamide together with rituximab being used in the RITUXVAS trial<sup>198</sup>. The use of this combination is controversial and may confer an additional risk of infection<sup>199</sup>.

For non-severe disease, alternative immunosuppressive agents to cyclophosphamide, such as methotrexate and mycophenolate mofetil, are equivalent to cyclophosphamide in terms of remission rates at 6 months but have higher subsequent rates of relapse and greater accrual of damage, especially for PR3-ANCA<sup>+</sup> disease. Methotrexate has been recommended for patients with no threat of organ-damaging disease, although longer term outcomes (such as relapse and damage accrual) are worse than with cyclophosphamide<sup>200</sup>. Such patients are uncommon and often require later use of cyclophosphamide or rituximab for control of more severe or relapsing disease. The MYCYC trial found similar responses with mycophenolate mofetil and cyclophosphamide in for MPO-ANCA<sup>+</sup> patients, at both 6 and 18 months<sup>201</sup>, and two other small randomized trials support a role for this agent as an alternative for this subgroup.

**Adjunctive therapy.** Although smaller studies demonstrate that use of plasma exchange is associated with reduced risk of end-stage kidney disease for patients with a serum creatinine

>500  $\mu\text{mol/l}$  at diagnosis<sup>202</sup>, the results of the large PEXIVAS trial indicate that plasma exchange should not be routinely recommended for GPA or MPA with nephritis or lung haemorrhage<sup>192</sup>. Whether specific patient subgroups, such as those that are oliguric at presentation or with hypoxic respiratory failure, benefit from plasma exchange requires further study. In one study, high-dose intravenous immunoglobulin (2 g/kg total dose) improved disease control of AAV that was refractory to usual therapy<sup>203</sup> and can be considered when conventional agents are contraindicated, such as in the setting of severe infection.

### ***Therapy to maintain remission***

The goals of maintenance therapy are to prevent relapse, minimize the risk of comorbidities and drug toxicity and manage the consequences of organ damage, such as chronic kidney disease. Many patients with AAV require prolonged low-dose glucocorticoids (prednisone  $\leq 10$  mg daily) to maintain remission, even if also treated with rituximab or an oral immunosuppressive drug.

In the MAINRITSAN and RITAZAREM trials of interval treatment, rituximab was superior to azathioprine<sup>193,204</sup>. These findings are consistent with previous observational data and are driving a revision of guidelines. Azathioprine, methotrexate or mycophenolate mofetil, with or without oral glucocorticoids, can be used after cyclophosphamide to maintain remission in patients with AAV. The optimal duration for treatment with these agents is uncertain, with the REMAIN trial supporting 3–4 years of treatment regardless of ANCA subtype or positivity<sup>205</sup>. The MAINRITSAN trial results indicate that following use of cyclophosphamide in patients with new-onset disease, a reduction in relapse rates occurs with use of rituximab (500 mg every six months over 2 years) compared with azathioprine. MAINRITSAN3 showed that following the initial two years of treatment, a further two years of rituximab treatment also reduced relapse rates<sup>206</sup>. The RITAZAREM trial confirmed and extended these observations in a cohort of patients with relapsing disease in whom remission was re-induced with rituximab and glucocorticoids, with maintenance rituximab at 1000 mg every four months over two years<sup>193,207</sup>. Both the MAINRITSAN trial results and observational data point to an increase in relapse risk after rituximab withdrawal, compared with continuing treatment, with a mean time to flare of two years after the last rituximab dose<sup>208</sup>.

There remains widespread use of oral immunosuppressive drugs after induction of remission with cyclophosphamide, at least until first relapse. The use of either CD19 counts or serum ANCA levels to guide redosing of rituximab is controversial; a randomized trial comparing fixed-interval dosing to biomarker-based dosing showed similar efficacy of these dosing regimens and reduced frequency of redosing, but more relapse when based on biomarkers<sup>209</sup>.

Several factors alter the risk of relapse in AAV, including disease phenotype (GPA relapses more than MPA), ANCA subtype (PR3-ANCA<sup>+</sup> patients relapse more than MPO-ANCA<sup>+</sup> patients), a history of previous relapses, the presence of ENT disease, and the absence of severe renal disease<sup>208</sup>. Following induction therapy, persisting or the return of ANCA positivity, *S. aureus* infection and lower cyclophosphamide exposure are linked to increased risk of relapse, but confirmation of these findings and testing in a clinical trial setting are needed prior to routine application to practice. As withdrawal of therapy seems to increase risk of relapse, patient-level factors to consider around drug withdrawal are the likely consequences of relapse (for example, end-stage kidney disease in a patient with chronic kidney disease), adherence to monitoring, access to expert advice and patients' views on the risks of relapse and ongoing drug exposure.

### ***Treatment of relapses of GPA and MPA***

Continued regular monitoring of patients with AAV after induction of remission enables early detection of relapses with less advanced symptomatology than at presentation and reduced delay. When a patient is considered to be having a relapse, a review of the primary diagnosis and vasculitis mimics, such as infection, malignancy or recreational drug use, should be excluded. Non-adherence to prescribed medications is also often a concern. One-third of relapses are severe, with consequences for renal and patient survival. Treatment of relapse follows the same principles as for initial therapy, but rituximab is preferred in view of superior responses in the RAVE trial in relapsing patients and the beneficial effects seen in the RITAZAREM trial<sup>193,196,197</sup>.

### ***Treatment of refractory disease***

Refractory disease in AAV has been defined as a failure to achieve full control of the vasculitis-related disease activity by six months, progressive disease within the first three months or relapse despite adequate ongoing therapy for maintenance of remission. It is important to differentiate true 'failure' of a medication from non-adherence, symptoms

caused by disease damage or mimics of vasculitis, which is most relevant in respiratory tract disease, for which comprehensive assessment and treatment of any infection should accompany the evaluation of the vasculitis. An increase in glucocorticoid dose, such as the use of intravenous methylprednisolone, is used in severe disease relapse but prolonged use of high-dose oral glucocorticoids should be avoided due to the associated risks. Switching from cyclophosphamide to rituximab can be considered. Adjunctive therapies to consider are plasma exchange or intravenous immunoglobulin (discussed above).

### ***Treatment of EGPA***

The approach to treat patients with EGPA with severe disease is similar to that in GPA and MPA (Table 4). Treatment strategies for EGPA vary according to disease manifestations and severity, and concomitant manifestations of asthma should be managed assertively. The FFS is used to stratify patients with EGPA, and the presence of substantial renal involvement (severe proteinuria or impaired kidney function), cardiomyopathy, gastrointestinal involvement or central nervous system involvement indicates a need for more intensive treatment, such as a cyclophosphamide and glucocorticoid regimen analogous to that used in GPA and MPA. Although one trial failed to demonstrate a benefit of oral immunosuppressive drugs in non-severe disease<sup>210</sup>, these agents are widely used in an attempt to reduce the high glucocorticoid requirement typical for this disease. The anti-IL-5 monoclonal antibody mepolizumab is a further therapeutic option that has demonstrated effects on airways and allergic manifestations<sup>143</sup>. In a randomized clinical trial, mepolizumab was useful in most patients, especially for asthma and sinonasal disease, by maintaining sustained remission, reducing relapse rates or substantially reducing the dosage or duration of glucocorticoid therapy<sup>211</sup>. Rituximab can also be used in EGPA, but its efficacy is less well established than for GPA and MPA, particularly for ANCA<sup>-</sup> patients with EGPA, who show frequent relapse of asthma and sinonasal disease despite continued use of rituximab<sup>212</sup>.

### ***Monitoring disease activity***

Clinical assessment and investigation follow the goals of maintenance outlined above, namely early identification of return of disease activity, screening for drug toxicity and management and recognition of comorbidities. Serum creatinine measurement and urine analysis to detect haematuria and proteinuria should be undertaken regularly to assess disease activity and kidney function. Additional elements include patient education and psychosocial support. Lower baseline IgG levels are associated with increased risk of immunodeficiency

after rituximab treatment. IgG levels should be checked periodically after treatment and falling levels should influence the decision on repeat dosing. Routine CD19 counts (a measure of B cell levels) are not required but may be informative in patients with incomplete response to rituximab or early relapse. Microbiological assessment of the nasopharynx and infection control with topical antiseptic agents or antibiotics may improve symptomatic management. More intensive monitoring may be required for organ-specific issues, such as bronchoscopy in tracheo-bronchial disease, repeat renal biopsy in advanced renal impairment with persisting urinary abnormalities, and cardiac imaging (echocardiography and MRI) in cases of cardiac involvement

### ***Comorbidities and treatment effects***

Infection is the most frequent serious problem in the first year of AAV treatment. Routine prophylaxis against *Pneumocystis jirovecii* pneumonia with sulfamethoxazole–trimethoprim (or alternative agents) is recommended and may also reduce the frequency of other bacterial infections. Independent of its value in *Pneumocystis jirovecii* prophylaxis, there is not enough evidence to recommend routine use of long-term sulfamethoxazole–trimethoprim in PR3-ANCA<sup>+</sup> patients to prevent disease relapse. Avoidance of severe drug-induced leukopenia is crucial. Rituximab-induced immunodeficiency and any case of recurrent infection requires further immunological assessment. Cases of hypogammaglobulinaemia with frequent infections may prompt use of replacement immunoglobulin<sup>213</sup>. Routine vaccination against influenza and pneumococcal infection is recommended for all patients, although serological responses may be impaired, especially following rituximab treatment.

Venous thromboembolism should be treated with anti-coagulation agents, although these can be problematic in the setting of pulmonary haemorrhage<sup>214</sup>. The risk of cardiovascular events is markedly raised in patients with more extensive disease, those without PR3-ANCA, and in the presence of renal impairment<sup>174,215</sup>. There is no current advice concerning reducing these risks that is specific to patients with AAV, although careful attention to management of hypertension and hyperlipidaemia is recommended.

Cyclophosphamide and other oral immunosuppressive drugs are associated with an increased risk of malignancies, particularly non-melanoma skin cancer and urothelial malignancy<sup>216,217</sup>. The rates of these cancers are falling with reduced immunosuppressant exposure, especially to cyclophosphamide, and the increased use of rituximab<sup>218</sup>. The relative risk of malignancy increases with therapy duration, so screening for haematuria and skin

malignancy in patients exposed to cyclophosphamide should be lifelong. Prophylaxis against gastric toxicity is often prescribed with high-dose glucocorticoids, which also increase the risk of osteoporosis<sup>219</sup>.

The management of organ damage in patients with AAV requires sub-specialist intervention by those with appropriate experience, in co-ordination with the primary physician overseeing the AAV treatment. Examples include surgical correction of lacrimal duct obstruction, middle ear disease, nasal collapse and subglottic or endobronchial stenosis<sup>220</sup>. Renal transplantation is generally successful in patients with AAV, although opportunistic infections may be more common than in transplant recipients without AAV, reflecting the prior burden of immunosuppressive therapy for AAV. Recurrence of vasculitis in the renal graft occurs in 2% of transplant recipients with AAV and can lead to graft failure. Long-term patient survival is similar to that of all causes of end-stage renal disease<sup>221</sup>.

## Quality of Life

Patients are well aware of the challenges they face in managing AAV and self-report substantial effects on QOL from AAV itself as well as the burden of treatment and treatment-related toxicities (Box 4). The evolution in immunotherapeutics has transformed AAV into a chronic disease and in consequence, patient priorities have realigned. Rather than focus on the spectre of major organ damage, patients rank QOL domains, such as fatigue and pain, as the greatest disease priorities<sup>222</sup>.

There can be key differences between patient and clinician perceptions of these priorities. For example, although patients and clinicians both rank weight gain as a major concern about glucocorticoid treatment, patients frequently cite ‘moon face’ and other effects on appearance as highly concerning, whereas clinicians tend to not consider these effects to be as important as the risk of infection. A closer assessment of patient-reported QOL will provide an opportunity for better alignment of patient and clinician priorities.

Characterization of a national cohort indicated that patients with AAV experienced substantially poorer levels of physical and mental QOL compared with matched controls in the general population (physical QOL: OR 7.0, 95% CI 4.4–11.1; mental QOL: OR 2.5, 95% CI 1.7–3.6), even though the vast majority (80%) of patients had achieved disease remission<sup>5</sup>.

Modern induction agents certainly result in noticeable improvements in QOL, but gains are modest and patient QOL rarely returns to normal levels<sup>196</sup>. Several factors may explain this situation. First, high-dose glucocorticoids remain integral to standard care but they have multiple toxic effects, including on QOL domains such as mental health<sup>223</sup>, which should be assessed using, for example, the Glucocorticoid Toxicity Index<sup>224</sup>. Second, almost all studies of QOL in patients with AAV have used generic questionnaires, such as the 36-item Short Form Health Survey (SF-36), the EuroQol-5 Dimension (EQ-5D) and the Health Assessment Questionnaire, which may not capture AAV-specific issues.

The OMERACT Vasculitis Working Group developed a 29-item patient-reported outcome (PRO) tool, the AAV-PRO questionnaire<sup>225,226</sup>, which covers six domains (organ-specific symptoms, systemic symptoms, treatment adverse effects, social and emotional effect, concerns about the future and physical function), following patient qualitative interviews to address this unmet need. The AAV-PRO is being integrated into ongoing randomized controlled trials. Similarly, the Patient-Reported Outcomes Measurement Information System (PROMIS) covers fatigue, physical functioning and pain interference. Both PRO systems assess function and QOL, are complementary and require further validation, but they offer options to ensure patients’ perspectives are considered when assessing disease activity in AAV<sup>225,226</sup>.



Impairments in QOL are the result of multiple factors, not only active inflammatory disease but also disease damage, although they seem to be primarily related to psychosocial factors, such as fatigue and dysfunctional coping strategies<sup>5</sup> and skeletal dysfunction. Persistently high levels of fatigue that does not change after treatment occurred in some patients in a SF-36 vitality domain sub-analysis of the MYCYC and RITUXIVAS studies<sup>227</sup>. Furthermore, there were marked disparities in physical QOL, including reduced knee extension (76%), among patients with AAV compared with healthy controls. This reduced knee extension was associated with impaired SF-36 Physical Component Score, as were metrics of pre-existing muscle strength<sup>228</sup>.

As QOL differs for each patient, measuring QOL can also be helpful in developing more personalized treatment approaches. Studies examining whether physical activity improves fatigue in patients with AAV are underway<sup>229</sup>. As disease assessment in AAV should include function or QOL<sup>168</sup>, reliable PRO tools are crucial not only for monitoring individual patients but also for high-quality assessment of the effect of AAV and the success of its therapies.

## Outlook

Substantial progress has been made in understanding and treating AAVs. GPA, MPA and EGPA have gone from diseases with a high mortality within 1–2 years of the onset of symptoms to chronic conditions that require lifelong specialist management. However, major challenges remain. AAVs are still responsible for substantial morbidity and mortality, both from the diseases themselves and from their treatments. Most treatments are fairly non-specific and come with undesirable immune and metabolic adverse effects. Furthermore, the optimal duration of therapy is uncertain, in part because of a lack of reliable predictors of relapse. More effective management of AAV in the future will rely on a better understanding of the clinical aspects of the disease and of disease-causing processes, together with the development of effective biomarkers to better define disease activity and predict relapse. More precise, effective and less toxic treatments require better knowledge, continued recognition of unmet clinical need, and additional strategic and successful well-designed international collaborative clinical trials. These efforts must be combined with more explicit recognition of important patient-centred outcomes, both in trials and in clinical practice. EGPA, as an even less common form of AAV with different clinical features to GPA and MPA, poses great challenges. In EGPA, even more than in GPA and MPA, multidisciplinary and international collaborations are required to improve the QOL of people with this disease. Table 5 summarizes some of the emerging therapies and biomarkers in AAV.

Better diagnostic and classification criteria of AAV will assist understanding, clinical studies and improvements in patient care. The near-complete DCVAS study has developed data-driven classification criteria for systemic vasculitides and should provide improved standardized criteria. Furthermore, whereas EGPA is clearly a distinct disease entity, for GPA and MPA the relationships and overlap between the syndromic classifications (GPA and MPA) and the presence of autoreactivity to either PR3 or MPO (PR3-ANCA<sup>+</sup> or MPO-ANCA<sup>+</sup>) must be more clearly understood to aid progress in understanding, in clinical trial design and in management strategies. These efforts are not only important for improved induction therapies, but also for defining treatment duration and the management of relapse.

Epidemiologically, there is inadequate data pertaining to EGPA in general, as well as a clear need to define the occurrence of all AAV types in Africa and South Asia. A better definition of the nature and burden of disease is likely to improve clinical care and outcomes, while more detailed understanding of the epidemiological associations will inform disease pathogenesis. The recognition that AAV is an autoimmune condition and the role of ANCAs in causing injury have been major advances. Nonetheless, the complexity of AAVs and the

inadequacies of current therapies demand a more detailed understanding of pathogenesis. Many questions remain. Can elucidating genetic contributions to AAV pathogenesis, including that of EGPA, lead to pathway-directed therapies, either with new therapies or by repurposing existing therapeutics? Why are only some ANCA pathogenic, and if we understand this, can we measure specific ANCA subtypes to develop more effective biomarkers? As there is substantial deposition of ANCA antigens in affected tissues, why is immunoglobulin deposition not more prominent? Why are some organs and tissues preferentially affected? Why do some individuals lose tolerance to PR3 or MPO, whereas most do not, when these neutrophil proteins are frequently released in an immunologically ‘dangerous’ infectious and inflammatory context? Can immunological tolerance be re-established by antigen-specific immunomodulation? Although much is known about events in the acute effector phase of injury, key events in more chronic disease and the role of T and B cell memory are unclear. Better understanding of these issues has the potential to move the goalposts in developing treatments that induce long lasting remission and tolerance.

Key uncertainties in the care of patients with AAV include the optimal duration and intensity of maintenance therapy in an individual patient, and a lack of biomarkers that signal relapses. Better biomarkers, either singly or in combination, to predict severity and relapse risk would lead to a more precise treatment approach. Emerging biomarkers include urinary sCD163, which could be useful in determining renal relapse, with or without other markers<sup>165,230</sup>. Following from observations that relapse risk in patients with AAV is associated with an ‘active’ T cell signature (that is, reduced expression of genes related to T cell exhaustion)<sup>136</sup>, prospective clinical trials are underway to determine whether markers of this signature can inform treatment intensity. Other potential biomarkers are emerging and are undergoing further evaluation<sup>166</sup>.

The potential for complement inhibition (by targeting C5aR) is one of several therapeutic strategies aimed at limiting neutrophil activation. Complement inhibition therapies could reduce or replace the current reliance on glucocorticoids in induction therapy regimens, as in phase II and III trials of C5aR inhibition<sup>110,111</sup>. Glucocorticoids are a pillar of maintenance therapy for many patients and this reliance needs to be mitigated. In EGPA, further clinical trials in IL-5–IL-5R blockade will hopefully improve therapeutic options in this disease. Much attention has justifiably been given to ANCA–neutrophil-mediated events in AAV but the more selective inhibition of the underpinning T and B cell autoimmunity also has potential in inducing and maintaining remission. The goal in the treatment of AAV is not only to suppress disease, but also to restore tolerance. Currently, there are no clear markers of tolerance to reassure clinicians and patients when ceasing immunosuppression and that can be used as surrogate markers in trials of

new tolerogenic, curative therapies. Whereas tolerogenic strategies that have been applied to other diseases might be suitable for AAV, outcome measures in AAV are unclear, although at least in the case of MPO as an autoantigen, progress has been made in defining key epitopes.

A multidisciplinary approach and patient engagement would result in a more integrated treatment strategy and improved outcomes in these complex multisystem diseases. Clinicians and patients should work together in a clinical setting to increase involvement of patients in their own care and treatment decisions. There are several dimensions to this issue. The educational needs of patients newly diagnosed with AAV are high, and the rarity of the conditions makes meeting these needs complicated. In the clinical trial environment, the use of PRO measures, such as AAV-PRO, should be mandatory. Interventional trials that include outcome measures that focus on improving physical and mental QOL are just beginning<sup>229</sup>. AAVs are challenging and complex conditions but, with an integrated, collaborative approach that includes considerable patient involvement, great progress can be made in improving the lives of people with these diseases.

## **Acknowledgements**

H-J.A., E.B., R.K., P.A.L. and A.R.K. are principle investigators, and J.K and C.O.S. are scientific advisors of the European Union Horizon 20/20 RELENT (RELapses preventiON in chronic autoimmune disease) consortium that has received funding from the European Union Horizon 2020 research and innovation programme under grant agreement 668036. A.R.K. acknowledges funding support from the Australian National Health and Medical Research Council of Australia (grant number 1104422, 1084869 and 1115805). H-J.A. was supported by the Deutsche Forschungsgemeinschaft (grant number AN372/24-1). P.A.L. acknowledges support from the Medical Research Council (grant number MR/L019027/1), Versus Arthritis (grant number 20593) and the British Heart Foundation (grant number PG/13/64/30435).

## **Author contributions**

All authors contributed to all sections of the Primer, with A.R.K. coordinating the project.

## **Competing interests**

A.R.K. is Chair of the board of the Australian and New Zealand Vasculitis Society and has been a consultant for CSL Limited and Visterra. N.B. has received research funding from Vifor and GSK and speaking fees from Roche and Vifor. E.B. received consultancy and speaker fees from Roche which were paid to her employer. D.J. has been a consultant for ChemoCentryx, InflaRx, and Insmad. P.L. holds founding equity in and receives consultation fees from PredictImmune Ltd. P.M has been a consultant for AbbVie, Biogen, CSL Behring, Genzyme, Insmad, Janssen, Kiniska and Sparrow, received research funding and consulting fees from AstraZeneca, Boehringer Ingelheim, Bristol-Myers Squibb, Celgene, ChemoCentryx, Genentech/Roche, GSK and InflaRx, and grant support from Kypha. U.S. has been a consultant for AstraZeneca, Insmad and ChemoCentryx and has received research funding from Genentech, Bristol-Myers Squibb, ChemoCentryx and GSK. The remaining authors declare no competing interests.

## **Peer review information**

*Nature Reviews Disease Primers* thanks P. Van Paassen, B. Hellmich, M.-H. Zhao, A. Vaglio, M. Segelmark and X. Puechal for their contribution to the peer review of this work.

**Table 1. Comparison of the three syndromic presentations of AAV**

	<b>GPA</b>	<b>MPA</b>	<b>Eosinophilic GPA</b>
Incidence	0.4–11.9 cases per 1 million person-years	0.5–24.0 cases per 1 million person-years	0.5–2.3 cases per 1 million person-years
Prevalence	2.3–146.0 cases per 1 million persons	9.0–94.0 cases per 1 million persons	2.0–22.3 cases per 1 million persons
Age of onset (years)	45–65	55–75	38–54
Male: female	1:1	1:1	1:1
2012 revised CHCC definition <sup>145</sup>	Necrotizing granulomatous inflammation, usually involving the upper and lower respiratory tract; necrotizing vasculitis affecting predominantly small-to-medium vessels (such as capillaries, venules, arterioles, arteries and veins). Necrotizing glomerulonephritis is common.	Necrotizing vasculitis, with few or no immune deposits, predominantly affecting small vessels (such as capillaries, venules, or arterioles). Necrotizing arteritis involving small and medium arteries may be present. Necrotizing glomerulonephritis is very common. Pulmonary capillaritis often occurs. Granulomatous inflammation is absent.	Eosinophil-rich and necrotizing granulomatous inflammation, often involving the respiratory tract; necrotizing vasculitis predominantly affecting small-to-medium vessels; associated with asthma and eosinophilia. ANCA <sup>+</sup> is more frequent when glomerulonephritis is present.
Frequency of ANCA	PR3-ANCA <sup>+</sup> : 65–75% MPO-ANCA <sup>+</sup> : 20–30% ANCA <sup>-</sup> : 5%	PR3-ANCA <sup>+</sup> : 20–30% MPO-ANCA <sup>+</sup> : 55–65% ANCA <sup>-</sup> : 5–10%	PR3-ANCA <sup>+</sup> : <5% MPO-ANCA <sup>+</sup> : 30–40% ANCA <sup>-</sup> : 55–65%
Key innate immune cell	Neutrophil	Neutrophil	Eosinophil
Relapse rate	Higher than MPA (or MPO-AAV)	Lower than GPA (or PR3-AAV)	Relapse is frequent

= AAV, ANCA-associated vasculitis; ANCA, anti-neutrophil cytoplasmic antibody; CHCC, Chapel Hill Consensus Conference; GPA, granulomatosis with polyangiitis; MPA, microscopic polyangiitis; MPO, myeloperoxidase; PR3, leukocyte proteinase 3.

**Table 2. Key clinical trials of induction therapies for GPA and/or MPA**

<b>Name</b>	<b>Population</b>	<b>Intervention</b>	<b>Key result</b>	<b>Other findings</b>	<b>Refs</b>
<b>Induction therapy</b>					
CYCLOPS	Newly diagnosed GPA or MPA, renal involvement, ANCA <sup>+</sup> <sup>a</sup> or ANCA <sup>-</sup> if biopsy	IV versus oral CYC, plus GCs	IV non-inferior to oral CYC in inducing remission; ~50% cumulative dose with IV versus oral CYC	Decreased relapse with oral CYC (HR 0.50) at long-term follow up	194,195
CORTAGE	New diagnosis, age ≥65 years <sup>b</sup>	IV-CYC (maximum 6 x 500 mg, every 2–3 weeks) plus 9 months GCs versus IV CYC (~5.5g) plus 26 months GCs	Similar remission rates	Fewer serious adverse events with lower dose CYC and GCs	231
RAVE	GPA or MPA newly diagnosed or relapsing, ANCA <sup>+</sup> , SCr <353 μmol/l	RTX versus oral CYC, then AZA	RTX non-inferior to CYC. RTX may be better for relapsing AAV	Similar short-term adverse effects, similar relapse rates with single-dose RTX	196,197
RITUVAS	GPA or MPA newly diagnosed, renal involvement, ANCA <sup>+</sup>	2 doses IV-CYC, then RTX versus IV-CYC	Equivalent outcomes	Similar relapse rates	198,232

MEPEX	GPA or MPA with biopsy proven glomerulonephritis, SCr >500 µmol/l, ANCA <sup>+</sup> or ANCA <sup>-</sup>	PLEX versus IV-MP as add-on to CYC and GCs	PLEX superior in rates of dialysis independence at 3 months and renal survival at 12 months	Long-term outcomes similar	202,233
PEXIVAS	GPA or MPA newly diagnosed or relapsing with renal involvement (eGFR <50 ml/min/1.73 m <sup>2</sup> ) or pulmonary haemorrhage, ANCA <sup>+</sup>	a) PLEX as add on to CYC or RTX and GCs b) Low-dose GCs versus high-dose GCs, plus RTX or CYC	a) PLEX not superior b) low-dose GCs non-inferior, with fewer serious infections	Effects similar across subgroups	192
CLEAR	Phase II, newly diagnosed or relapsing GPA or MPA with renal involvement, ANCA <sup>+</sup>	Avacopan and reduced GCs or no GCs, versus GCs, plus RTX or CYC	Avacopan not inferior	Avacopan: faster reduction in proteinuria, better QOL indices with no GCs	110
ADVOCATE	Phase III, newly diagnosed or relapsing GPA or MPA, ANCA <sup>+</sup>	Avacopan versus GCs, plus RTX or CYC then AZA	Avacopan non inferior to GCs, superior for sustained remission at one year	Less GC-related toxicity	111,234



IVIg	Active GPA or MPA, >2 months CYC and GCs, ANCA <sup>+</sup>	CYC and GCs versus add-on IV-Ig (single dose 2 g/kg)	Response: 14/17 IV-Ig, 6/17 placebo	Effects did not extend beyond 3 months	203
NORAM	Newly diagnosed GPA or MPA, less severe disease	MTX (20–25 mg weekly) versus oral CYC	MTX non-inferior for remission induction	MTX less effective for extensive or pulmonary disease; relapse more frequent with MTX	200,235
MYCYC	New diagnosis of GPA or MPA, eGFR >15 ml/min/1.73 m <sup>2</sup>	IV-CYC versus MMF (2–3 g daily)	MMF non-inferior for remission induction	Increased relapse with MMF, especially PR3-AAV	201

<sup>a</sup> ANCA<sup>+</sup> refers to a positive test at any time, not ANCA<sup>+</sup> at the time of entry into study.

<sup>b</sup> Study also included polyarteritis nodosa (10 patients) and eosinophilic GPA (14 patients), of the 104 patients.

AAV, ANCA-associated vasculitis; ANCA, anti-neutrophil cytoplasmic antibody; AZA, azathioprine; CYC, cyclophosphamide; eGFR, estimated glomerular filtration rate; GCs, glucocorticoids; GPA, granulomatosis with polyangiitis; HR, hazard ratio; MMF, mycophenolate mofetil; MPA, microscopic polyangiitis; MTX, methotrexate; OR, odds ratio; PLEX, plasma exchange; PR3, proteinase 3; RTX, rituximab; SCr, serum creatinine.

**Table 3. Key clinical trials of therapies to maintain remission in GPA and/or MPA**

<b>Maintenance therapy</b>					
CYCAZAREM	New diagnosis GPA or MPA, SCr <500 µmol/l, ANCA <sup>+</sup> or ANCA <sup>-</sup> if biopsy	Induction oral-CYC or GCs 3–6 months (to remission), then CYC 1.5mg/kg daily versus AZA to 12 months	Similar relapse rates	Relapse more common in GPA than MPA	236
WEGENT	GPA or MPA in remission, initially treated with IV CYC and GCs, ANCA <sup>+</sup> or ANCA <sup>-</sup> if biopsy	AZA versus MTX	Similar relapse rates and toxicity	Long-term outcomes similar	237,238
IMPROVE	GPA or MPA newly diagnosed, in remission, ANCA <sup>+</sup>	MMF versus AZA	Relapse more common with MMF (HR 1.69)	Similar adverse event rates	239
REMAIN	GPA or MPA in remission 18–24 months post diagnosis, ANCA <sup>+</sup> or ANCA <sup>-</sup> with biopsy	AZA or GCs for 48 months versus withdrawal by 24 months	Relapse higher with withdrawal (OR 5.96)	More serious adverse events in continuation group	205
MAINRITSAN	GPA or MPA in remission after CYC and GCs, ANCA <sup>+</sup>	RTX (500 mg, every six months) versus AZA	Relapse higher with AZA at 28 months (HR 6.61)	Similar rates of adverse events Decreased relapse rate	204,240

				at long-term follow up	
MAINRITSAN2	GPA or MPA, in remission, ANCA <sup>+</sup> and ANCA <sup>-</sup>	Scheduled RTX versus RTX tailored to B cell return and/or ANCA	No difference in relapse rates	Tailored RTX arm received fewer infusions	209
MAINRITSAN3	GPA or MPA, sustained remission, 2 years after RTX maintenance therapy	No additional treatment (placebo) versus 2 further years of RTX	Relapse higher with placebo: 26% versus 4% (HR 7.5)	No increase in adverse events with extended RTX	206
RITAZAREM	Relapsed GPA or MPA re-induced with RTX and GCs, in remission, ANCA <sup>+</sup>	RTX (1 g every 4 months) versus AZA	RTX superior in preventing relapse (HR 0.36)	No increase in adverse events with RTX	193,207
WGET	GPA with active disease, ANCA <sup>+</sup> or ANCA <sup>-</sup>	Standard therapy <sup>a</sup> (pre-RTX era) versus add-on etanercept (TNF inhibitor)	No difference in relapse rates	6/89 etanercept-treated patients developed solid organ tumours	241
Metzler et al.	GPA, complete or partial remission	LEF versus MTX	Relapses: MTX 13/28, LEF 6/26 patients	LEF: 19% withdrawal with adverse effects at 30 mg dose	242
BREVAS	GPA or MPA in remission 26 weeks after induction, ANCA <sup>+</sup>	AZA and low-dose GCs versus add-on belimumab	No improvement with belimumab, but low relapse rate in placebo group	Recruitment lower than planned due to change in clinical practice	243
Stegeman et al.	GPA in remission, ANCA <sup>+</sup> or	Standard therapy <sup>a</sup> (pre-	Fewer upper airways	Fewer infections with	244

	ANCA <sup>-</sup>	RTX era) versus add-on co-trimoxazole	relapses with co- trimoxazole	co-trimoxazole	
--	-------------------	--	----------------------------------	----------------	--

<sup>a</sup> Several treatment pathways were available, depending on the severity and activity of disease and other factors, but usually involved either MTX plus GCs, then taper and try to cease GCs; or oral CYC and GCs, then MTX or AZA taper and try to cease GCs.

AAV, ANCA-associated vasculitis; ANCA, anti-neutrophil cytoplasmic antibody; AZA, azathioprine; CYC, cyclophosphamide; GCs, glucocorticoids; GPA, granulomatosis with polyangiitis; HR, hazard ratio; LEF, leflunomide; MMF, mycophenolate mofetil; MPA, microscopic polyangiitis; MTX, methotrexate; OR, odds ratio; RTX, rituximab; SCr, serum creatinine; TNF, tumour necrosis factor.

**Table 4. Key clinical trials of therapies for EGPA**

<b>Trial</b>	<b>Population</b>	<b>Intervention (n)</b>	<b>Key result</b>	<b>Other findings</b>	<b>Refs</b>
Ribi et al.	Treatment failure or relapse on GCs alone, limited disease, 1996 FFS = 0	GCs and IV-CYC (10) versus GCs and AZA (9)	No significant differences in remission; CYC 5/10, AZA 7/9	Most remained on GCs	245
Puéchal et al.	New diagnosis, limited disease, 1996 FFS = 0, included other AAV	GCs (25) versus add-on AZA (26)	No effect on combined endpoint of remission induction and relapse	No change in exacerbations of asthma/rhinosinusitis. Long-term outcomes similar	210,246
MIRRA	Relapsing or refractory EGPA, stable GC dose (7.5–50 mg)	GCs (68) versus add-on SC-mepolizumab every four weeks for 52 weeks (68)	Mepolizumab effective, mainly in allergy related manifestations	Post hoc analysis suggests >75% of patients derived benefit	143,211
Guillevin et al.	Non-severe EGPA (included PAN)	GCs versus add-on PLEX (18 in total)	No benefit, results grouped together with patients with PAN	Reflects historical grouping of disease	247
Guillevin et al.	Severe EGPA (included PAN)	IV-CYC and GCs (6) versus add-on PLEX (8)	No benefit, results grouped together with patients with PAN	Reflects historical grouping of disease	248

AAV, ANCA-associated vasculitis; AZA, azathioprine; CYC, cyclophosphamide; EGPA, eosinophilic granulomatosis with polyangiitis; FFS, Five Factor Score; GCs, glucocorticoids; PAN, polyarteritis nodosa; PLEX, plasma exchange; SC, subcutaneous.

**Table 5. Selected potential new management strategies and biomarkers in AAV<sup>a</sup>**

	<b>Potential strategy</b>	<b>Stage of development</b>
<b>Treatments</b>		
Complement inhibition	Avacopan (small-molecule C5aR antagonist) <sup>110</sup>	Phase III trial completed (NCT02994927) <sup>111</sup>
SYK inhibition	Small-molecule inhibitors <sup>249</sup>	Pre-clinical model proof-of-concept studies (MPO-AAV)
Eosinophils and T <sub>H</sub> 2 cells in EGPA	Direct or indirect targeting of eosinophils and T <sub>H</sub> 2 cells <sup>b</sup> , for example anti-IL-5R (benralizumab), T <sub>H</sub> 2 cell and eosinophil chemokines	Non-inferiority clinical trial comparing mepolizumab with benralizumab (NCT04157348)
BAFF inhibition	Belilumab <sup>243</sup> as add-on to rituximab	Phase II trial in progress (NCT03967925)
Co-stimulatory signal blockade	Abatacept <sup>250</sup>	Phase II trial in progress (NCT02108860)
T cell or T <sub>H</sub> cell-defining cytokine inhibition	Monoclonal antibodies, for example ustekinumab (anti-IL-12p40) <sup>121,218</sup>	Pre-clinical model proof-of-concept studies published (MPO-AAV) <sup>121,251</sup>
Tolerogenic therapies	Peptide and antigen tolerogenic platforms	Pre-clinical model proof-of-concept studies published <sup>252</sup> (MPO-AAV)
<b>Biomarkers</b>		
Renal activity or flare	Urinary soluble CD163 with or without other biomarkers (for example, soluble CD25 and CCL2) <sup>165,230</sup>	Further clinical studies for biomarker utility
Overall risk of flare	Markers of T cell activity and exhaustion in AAV <sup>135,136</sup>	Trials of 17-gene qPCR stratification for prognosis in other diseases <sup>144</sup>
Impending flare	CD5 <sup>+</sup> B cells <sup>253</sup> ,	Clinical studies (NCT03906227)

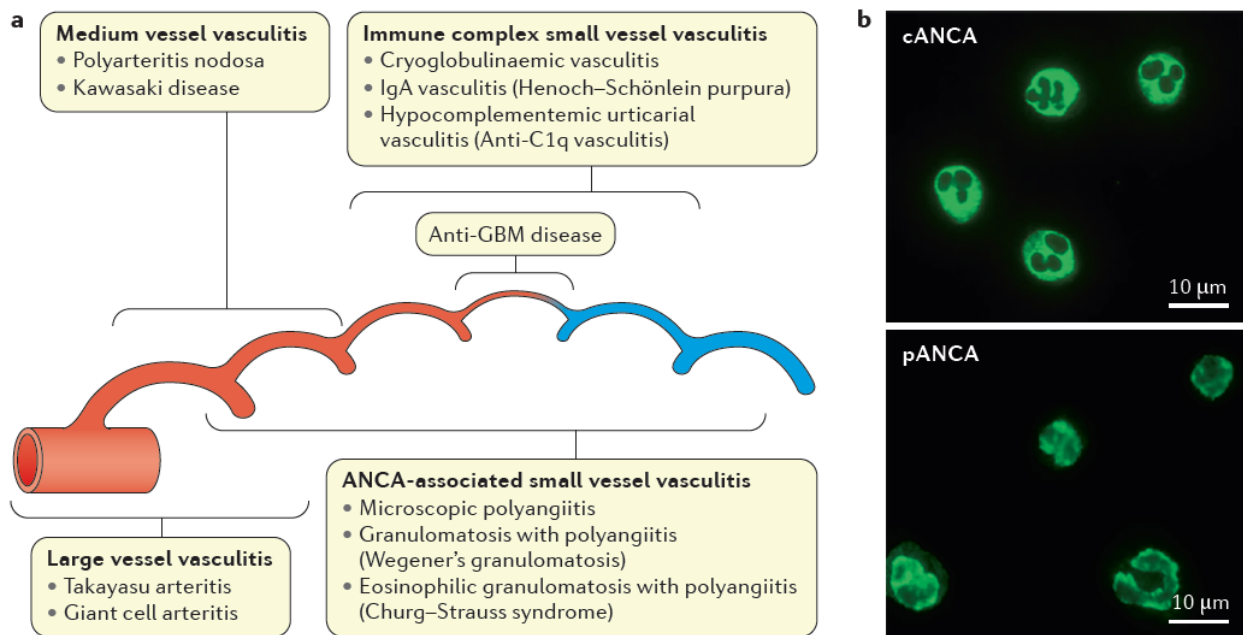
<sup>a</sup>Only those for which a rationale has been established are included.

<sup>b</sup>In addition to anti-IL-5 strategies already in clinical use.

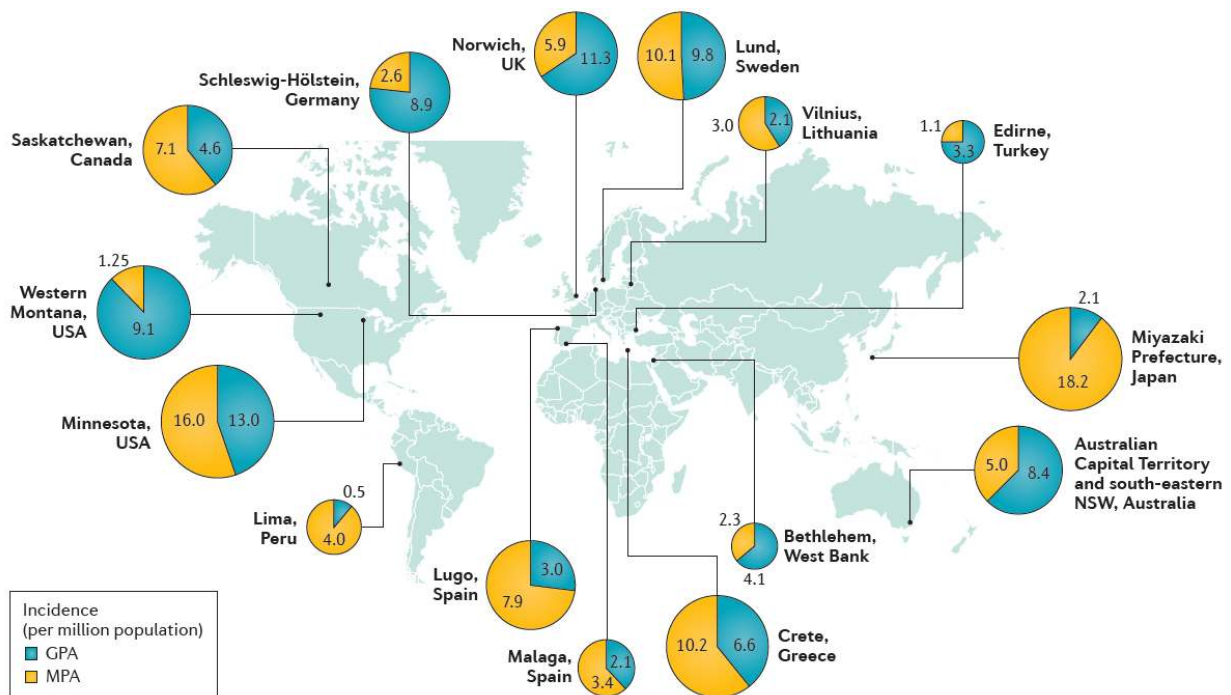
AAV, ANCA-associated vasculitis; BAFF, B cell-activating factor; EGPA, eosinophilic granulomatosis with polyangiitis; MPO, myeloperoxidase; qPCR, quantitative polymerase chain reaction; SYK, spleen tyrosine kinase; T<sub>H</sub>2, T helper 2.



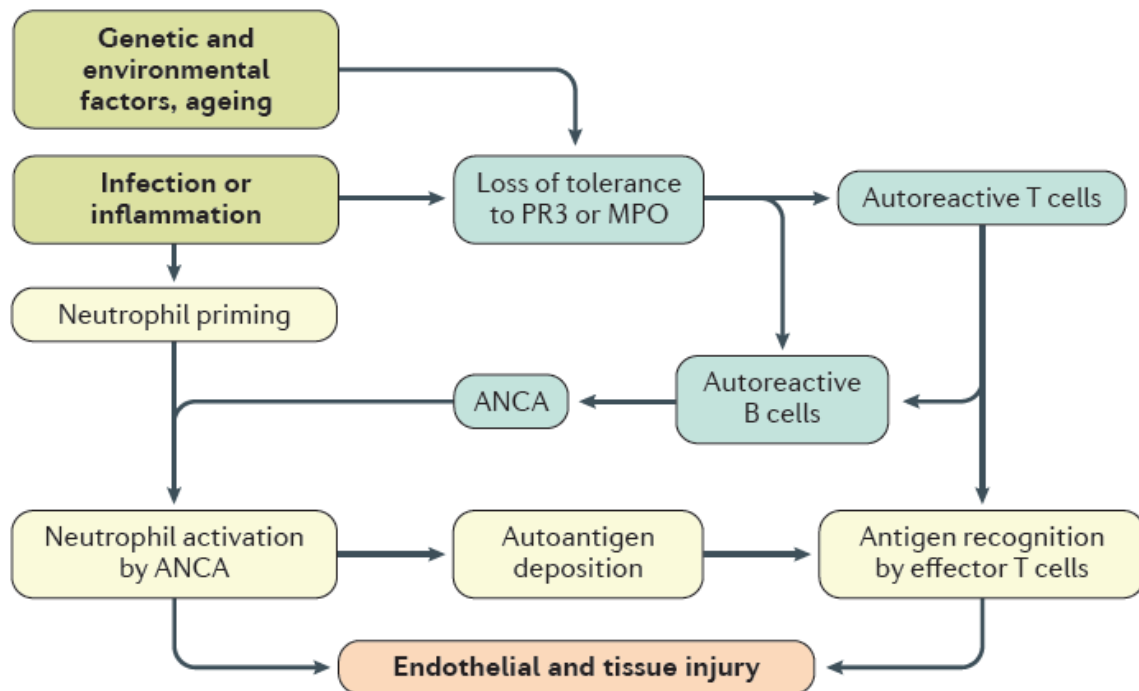
## Figures



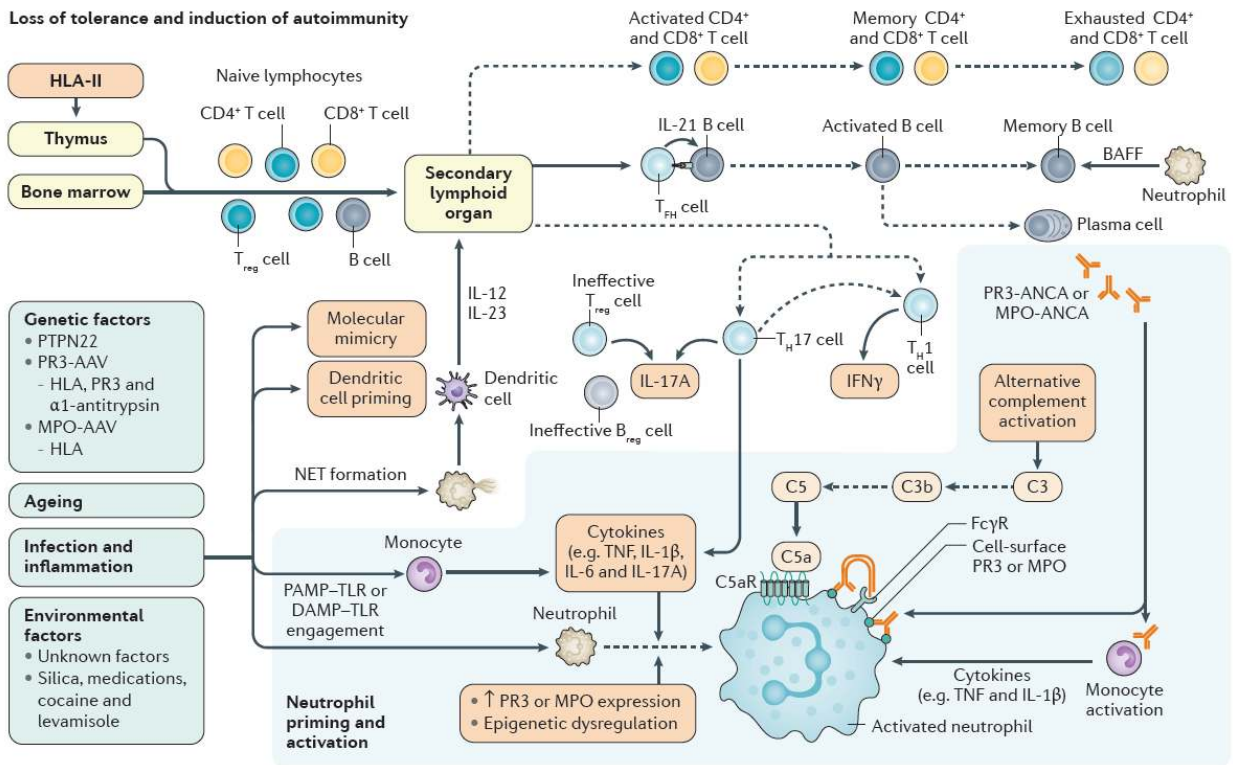
**Figure 1. Small vessel vasculitis.** **a** | The updated 2012 Chapel Hill Consensus Conference classification of vasculitis<sup>145</sup>, which is based on the size of the main vessels that are affected. The anti-neutrophil cytoplasmic antibody (ANCA)-associated vasculitides, namely granulomatosis with polyangiitis (GPA), microscopic polyangiitis (MPA) and eosinophilic granulomatosis with polyangiitis (EGPA), are small vessel vasculitides. **b** | Patterns of ANCA staining by indirect immunofluorescence. A cytoplasmic pattern of staining for ANCA (cANCA) is strongly associated with antibodies against PR3. A perinuclear pattern of staining for ANCA (pANCA) is seen with antibodies against several different proteins, but anti-MPO antibodies are most relevant for AAV. Scale bar = 10  $\mu$ m. Part **a** adapted with permission from REF<sup>145</sup> (Wiley). GBM, glomerular basement membrane; IgA, immunoglobulin A;



**Figure 2. Global epidemiology of ANCA-associated vasculitides.** The map depicts studies that have examined the incidence of granulomatosis with polyangiitis (GPA) and microscopic polyangiitis (MPA) per 1 million individuals per year. There is substantial variation in the relative incidences of GPA and MPA between Europe and Asia, and an effect of latitude. The regions studied include Australia<sup>254</sup>; Canada<sup>255</sup>; Germany<sup>256</sup>; Greece<sup>257</sup>; Japan<sup>258</sup>; Lithuania<sup>259</sup>, Turkey<sup>260</sup>; Peru<sup>261</sup>; Spain (Lugo)<sup>262</sup>; Spain (Malaga)<sup>263</sup>; Sweden<sup>264</sup>; the United Kingdom<sup>18</sup>; the USA (Minnesota<sup>2</sup> and Western Montana<sup>265</sup>); and the West Bank<sup>266</sup>. ANCA, anti-neutrophil cytoplasmic antibody.

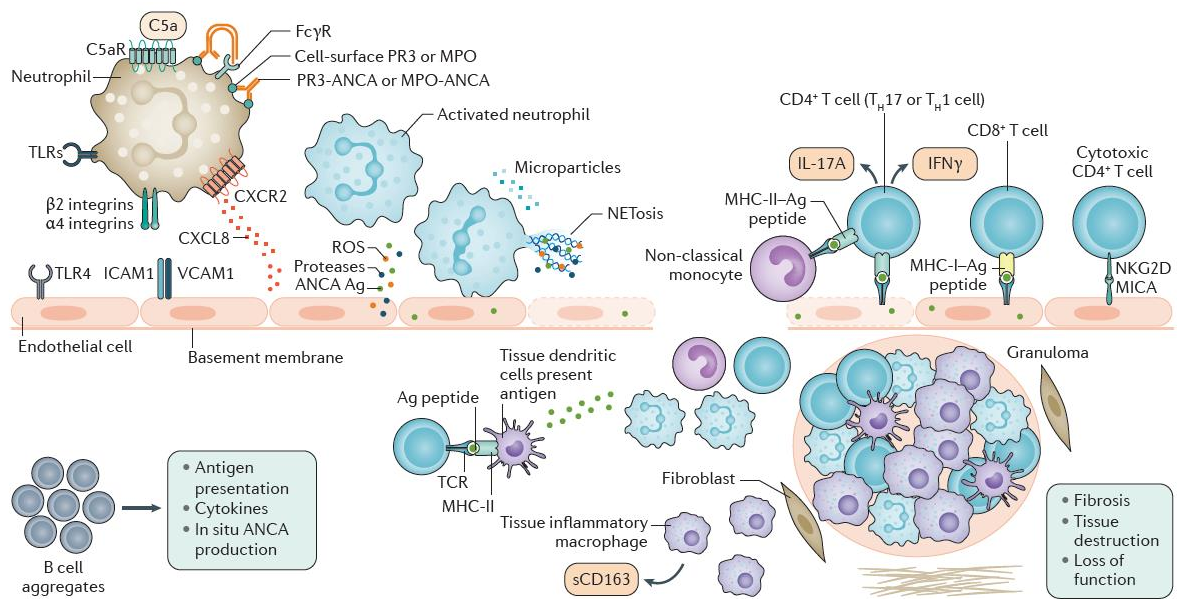


**Figure 3. Pathogenetic events in GPA and MPA.** Simplified schematic showing events leading to acute tissue injury in two forms of anti-neutrophil cytoplasmic antibody (ANCA)-associated vasculitis (AAV), namely granulomatosis with polyangiitis (GPA) and microscopic polyangiitis (MPA). Risk factors for loss of tolerance and disease (olive) include genetic and environmental factors, age and infection or inflammation. These AAVs involve autoreactive elements (blue-green), including effector cell responses to the neutrophil proteins leukocyte proteinase 3 (PR3) and myeloperoxidase (MPO) by autoreactive T cells and B cells, with the humoral response resulting in the production of ANCAs. The key steps in the effector phase (yellow) are neutrophil priming and activation by ANCA with subsequent neutrophil localization to the microvasculature and injury. MPO and PR3 are deposited in and around the microvasculature of target tissues and effector T cells recognize these antigens, resulting in pro-inflammatory cytokine production and further recruitment of effector leukocytes. These responses lead to tissue injury and endothelial damage (orange). Less is known about the pathogenesis of the other form of AAV, namely eosinophilic GPA (EGPA), than for GPA and MPA.



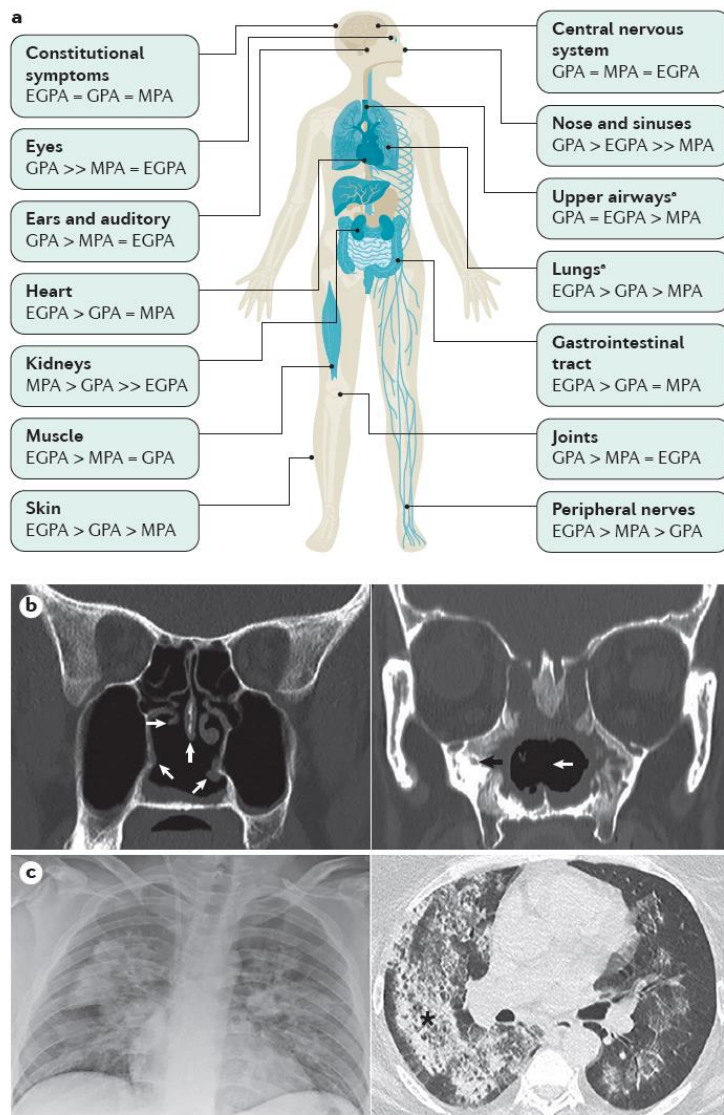
**Figure 4. Loss of tolerance and the generation of effector responses in GPA and MPA.**

Genetic risk factors in an ageing host combine with known or unknown environmental factors (possibly including silica, certain medications or drugs) and potentially infection to induce a loss of T and B cell tolerance to one of two clinically recognized neutrophil antigens, leukocyte proteinase 3 (PR3) or myeloperoxidase (MPO). Autoantigen-specific T cells become activated and differentiate into T helper (T<sub>H</sub>) cells, including T follicular helper (T<sub>FH</sub>) cells that provide help to B cells, type 1 T helper (T<sub>H1</sub>) cells and IL-17A-producing T helper (T<sub>H17</sub>) cells; an exhausted phenotype is associated with reduced risk of disease relapse. B cells differentiate into plasma cells and memory cells. Plasma cells secrete autoantibodies against PR3 (PR3-ANCA) or MPO-ANCA. Neutrophils are activated and primed by pro-inflammatory cytokines, pathogen-associated molecular patterns (PAMPs) and damage-associated molecular patterns (DAMPs) engagement with Toll-like receptors (TLRs), and binding of C5a to the C5a receptor on neutrophils. ANCA binds to neutrophils in an antigen-specific manner and to neutrophils and monocytes in a Fc $\gamma$  receptor (Fc $\gamma$ R)-dependent fashion. AAV, ANCA-associated vasculitis; BAFF, B cell-activating factor; B<sub>reg</sub> cells, regulatory B cells; GPA, granulomatosis with polyangiitis; MHC-II, major histocompatibility class II; IFN $\gamma$ , interferon- $\gamma$ ; MPA, microscopic polyangiitis; NET, neutrophil extracellular trap; TNF, tumour necrosis factor; T<sub>reg</sub> cells, regulatory T cells.

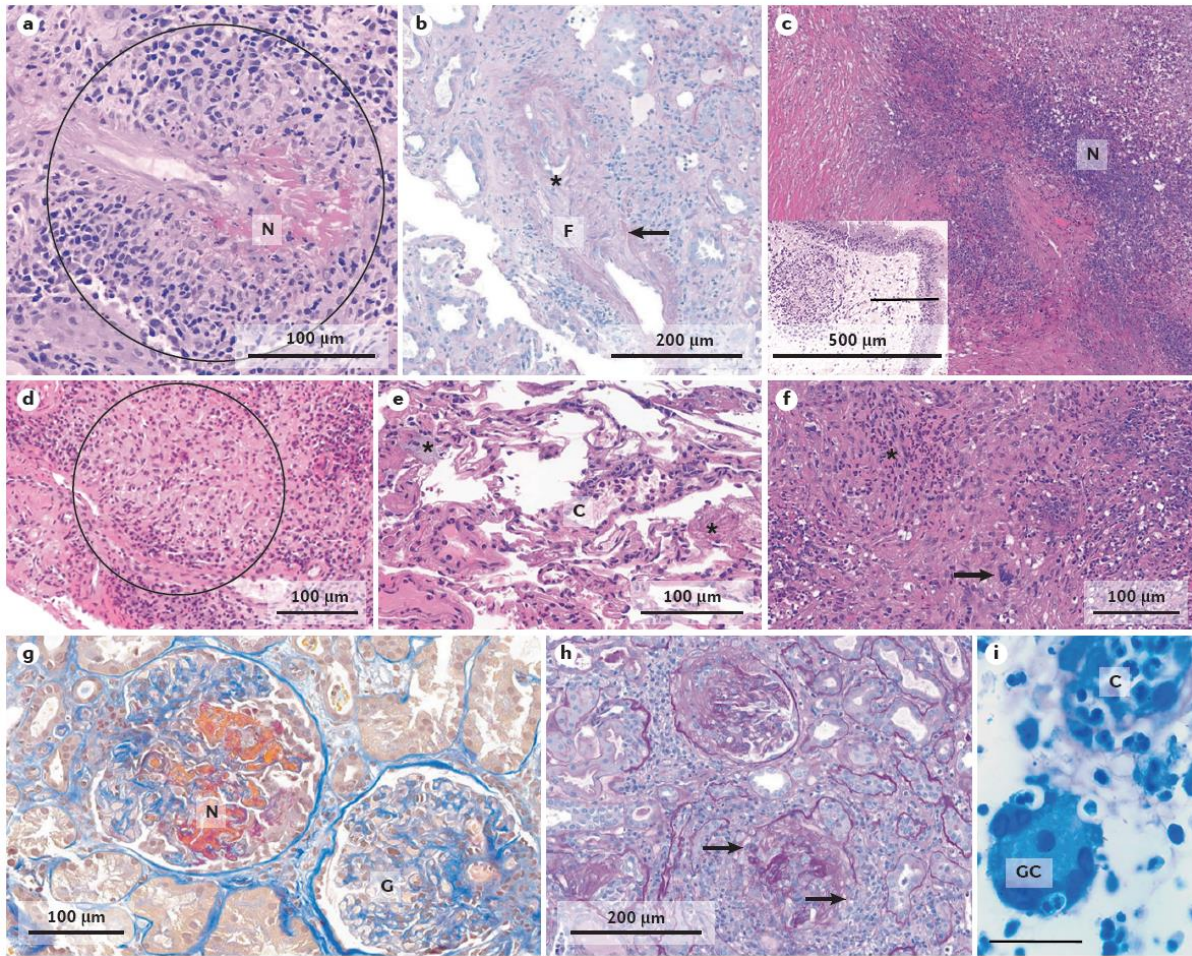


**Figure 5. Endothelial and tissue injury in GPA and MPA.** Anti-neutrophil cytoplasmic antibody (ANCA)-activated, primed neutrophils localize to the endothelial cells in the microvasculature of the kidneys, respiratory tract and other tissues. Recruitment is mediated by adhesion molecules and chemokines. Adherent neutrophils induce endothelial injury by several mechanisms. They produce reactive oxygen species (ROS) and degranulate, releasing proteases and ANCA antigens. They generate neutrophil extracellular traps (NETs) and undergo cell death by NETosis. ANCA antigens released by neutrophils, and when in a complex with major histocompatibility complex class II (MHC-II) or MHC-I, can be recognized as antigenic peptides by effector T helper 1 ( $T_H1$ ) cells, IL-17 producing T helper ( $T_H17$ ) cells and  $CD8^+$  T cells, at least in the case of myeloperoxidase (MPO). Antigen-presenting cells can include endothelial cells, intravascular monocytes and dendritic cells (DCs). Cytotoxic  $CD4^+$  T cells expressing NKG2D recognize MHC-I-polypeptide-related sequence A (MICA), which is upregulated on activated endothelial cells and in granulomas. Mechanisms of extravascular tissue injury include the extravasation of inflammatory leukocytes and the formation of B cell aggregates that may present ANCA antigens to T cells, produce pro-inflammatory cytokines and produce ANCA in situ. Tissue-resident and recruited DCs present antigen, whereas tissue-resident and recruited macrophages are pro-inflammatory and pro-fibrotic. These macrophages shed soluble CD163 (sCD163), which is a potential biomarker of disease activity. Leukocytes within granulomas contribute to inflammatory injury. Ag, antigen; DAMPs, damage-associated molecular patterns;  $Fc\gamma R$ ,  $Fc\gamma$  receptor; ICAM1, intercellular adhesion molecule 1;  $IFN\gamma$ , interferon- $\gamma$ ; PAMPs, pathogen-associated molecular patterns; ROS, reactive oxygen species; TCR, T cell receptor; TLR, Toll-like receptor; VCAM1, vascular cell adhesion protein 1.

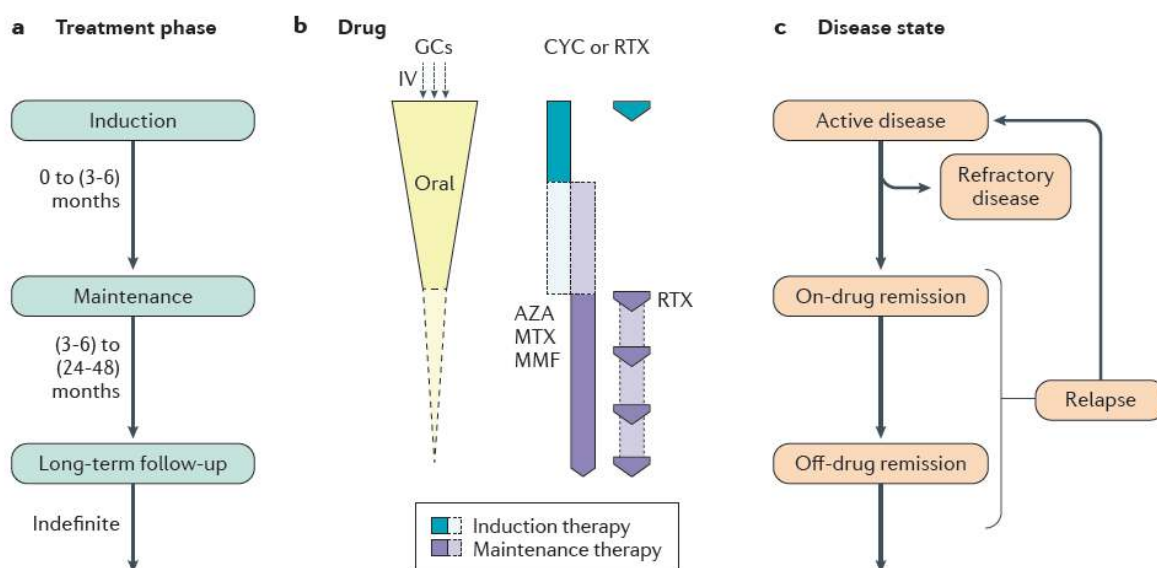
**\*\* Note production errors in MHC/TCR placement and labelling still to be fixed \*\*\***



**Figure 6. Clinical features of AAV.** **a** | Schematic showing the organs, organ systems and tissues that are affected in the anti-neutrophil cytoplasmic antibody (ANCA)-associated vasculitides (AAVs) granulomatosis with polyangiitis (GPA), microscopic polyangiitis (MPA) and eosinophilic GPA (EGPA). The approximate relative frequency of involvement is also shown. **b** | Radiological features of sinonasal disease in AAV. Coronal CT images (left) showing destruction of the nasal septum, inferior turbinates and right middle turbinate (arrows) in a patient with newly diagnosed GPA. Chronic changes in sinonasal GPA (right) showing simultaneous nasal septum destruction (white arrow) and neo-osteogenesis (black arrow). **c** | Radiological features of pulmonary hemorrhage in acute AAV. Chest X-ray (left) showing infiltrates and changes consistent with acute pulmonary haemorrhage. Transverse CT image (right) showing acute pulmonary haemorrhage and ‘ground-glass’ changes (\*). =, rate of involvement approximately equal to; <, rate of involvement more frequent than; <<, rate of involvement substantially more frequent than. \*For EGPA, asthma and allergic manifestations are included in the frequency of involvement. Parts **b** and **c** courtesy of Prof Kenneth Lau and A/Prof Joanne Rimmer, Monash Health and Monash University.



**Figure 7. Histopathology of AAV.** **a** | Fibrinoid vessel wall necrosis (N) is the hallmark of ANCA-associated vasculitis (AAV), accompanied by a ‘granuloma-like’ mixed inflammatory infiltrate (circled) composed of macrophages, lymphocytes, plasma cells and granulocytes in microscopic polyangiitis (MPA). **b** | Resolution of inflammation leads to trans mural (arrow) fibrous scars (F) and substantial narrowing (\*) or even complete occlusion of the vessel lumen. **c** | ‘Geographic’ necrosis (N) of confluent epithelioid granulomas in the lungs in granulomatosis with polyangiitis (GPA). Inset shows a subepithelial nasal granuloma in GPA, composed of loose aggregates of epithelioid cells and giant cells. **d** | Epithelioid granulomas (circled) in eosinophilic GPA (EGPA) in the nose are more compact and are surrounded by eosinophils. **e** | Early lesions in the lung in MPA often only show neutrophilic capillaritis (C) and fibrinous exudates (\*). **f** | Giant cells with sometimes ‘smudged’ appearing nuclei (arrow), neutrophilic granulocytes and nuclear debris (\*) from neutrophils in epithelioid granulomas in the lungs in GPA. **g** | Necrosis of glomerular capillaries (N) is seen adjacent to an unaffected glomerulus (G) in MPA. **h** | Lesions of different age are seen with partial or circumferential crescents and variable destruction of the Bowman capsule (arrowhead) in MPA. **i** | Neutrophilic capillaritis (C) and multinucleated giant cells (GC) are characteristic features of GPA in the nasal mucosa. Staining methods are haematoxylin and eosin (parts **a–f**), acid fuchsin orange G (part **g**), Periodic acid–Schiff (part **h**) and Giemsa (part **i**). **\*\* Note scale bars need still to be fixed by production\*\***



**Figure 8. Management of GPA and MPA cases that present with organ or life-threatening manifestations.**

**a** | Current treatment approaches include an induction phase to induce remission, followed by a maintenance phase, then long-term follow up. **b** | Current induction treatment regimens for several diseases are centred on glucocorticoids (GCs), in combination with either cyclophosphamide (CYC) or rituximab (RTX). Intravenous GCs are often administered after treatment with high-dose oral prednisolone (or prednisone) at an initial dose of 50–75 mg. GC dose is tapered over several months, with the standard of care being the quicker taper used in the PEXIVAS trial<sup>192</sup>. The optimal duration of GC therapy in the maintenance phase of AAV is unclear, but GCs are often withdrawn over 4–36 months. CYC is recommended for induction, for between 3–6 months, and can be administered by intravenous pulse or daily oral therapy, with a switch to maintenance therapy at remission (3–6 months). Rituximab can also be given for induction therapy in 2–4 doses and is increasingly being used in preference to CYC. RTX is given for maintenance therapy, after induction with RTX or CYC. Oral immunosuppressive agents, including azathioprine (AZA), methotrexate (MTX) or mycophenolate mofetil (MMF), are alternatives for RTX for maintenance therapy. MTX or MMF are alternatives to CYC or RTX for induction therapy in non-organ threatening disease. **c** | Disease state corresponding with phase of therapy in parts **a** and **b**. Some patients do not respond to one of the standard induction regimens and develop refractory disease, whereas others relapse while on or after maintenance therapy is halted, and therefore require re-initiation of induction therapy.



### **Box 1. Diagnostic testing methods in AAV**

Most cases of granulomatosis with polyangiitis (GPA) and microscopic polyangiitis (MPA) are characterized by anti-neutrophil cytoplasmic antibodies (ANCA) directed against either leukocyte proteinase 3 (PR3) or myeloperoxidase (MPO). In clinical practice, these antibodies are detected using indirect immunofluorescence (IIF) and various antigen-specific immunoassays, most commonly enzyme-linked immunosorbent assays (ELISAs) for either PR3-ANCA or MPO-ANCA. Improvements in antigen-capture methods have resulted in better assay performance. In addition, several other types of solid-phase antigen-specific assays may be used to detect PR3-ANCA and MPO-ANCA<sup>162</sup>.

Indirect immunofluorescence involves incubating diluted patient serum samples with ethanol-fixed, permeabilized neutrophils (sometimes pre-attached to glass slides) from healthy donors. Bound ANCA are detected using a fluorescent secondary anti-human IgG antibody, and the presence, titre and pattern of fluorescence are assessed by fluorescence microscopy. The two patterns of fluorescence that are relevant to AAV diagnosis are a cytoplasmic pattern of ANCA staining (cANCA) that is strongly associated with PR3-ANCA and a perinuclear pattern (pANCA) that in AAV is strongly associated with MPO-ANCA. The pANCA pattern is a consequence of ethanol fixation, as the highly cationic MPO localizes around the negatively charged neutrophil nucleus after ethanol fixation.

Approaches to ANCA testing when AAV is suspected are informed by consensus statements, although substantial variation exists in practice<sup>267</sup>. With improved immunoassay performance, the approach recommended by an international consensus statement<sup>162</sup> after a large multicentre study<sup>268</sup> is to use antigen-specific assays for PR3-ANCA and MPO-ANCA as the initial screening method when AAV is suspected, with IIF only performed if these assays are negative. Approaches based on 1999 guidelines<sup>269</sup>, which are still used in some diagnostic laboratories, involve a combination of IIF screening with specific PR3-ANCA and MPO-ANCA ELISAs for positive samples, or using both methods for each sample.

Although ANCA are primarily associated with AAVs, a positive ANCA test by IIF occurs in other diseases, including infections, such as tuberculosis, *Pseudomonas aeruginosa* infection in individuals with cystic fibrosis<sup>270,271</sup> and infective endocarditis (PR3-ANCA or MPO-ANCA can occur<sup>272-274</sup>), an important differential diagnosis as unwarranted immunosuppression has life-threatening consequences. An atypical ANCA (aANCA pattern) resembling (but differing from) pANCA can occur in gastrointestinal tract diseases<sup>270</sup>, including ulcerative colitis, and some liver diseases., ANCA can also occur in other autoimmune diseases, such as systemic lupus erythematosus and rheumatoid arthritis (notwithstanding the co-existence

of AAV or AAV-like features in a minority of people with these diseases). Drug-associated AAV is associated not only with MPO-ANCA but also anti-lactoferrin and anti-neutrophil elastase antibodies.

Other proteins associated with a positive IIF ANCA test include azurocidin, bactericidal/permeability increasing protein and cathepsin G. Their clinical utility is unproven and antigen-specific testing is not routinely performed in AAV.

## **Box 2. Clinical features of the ANCA-associated vasculitides**

### *Granulomatosis with polyangiitis (GPA)*

Symptoms of systemic vasculitis, such as fever, weight loss, malaise and fatigue. Symptoms and signs of small vessel vasculitis, often in the ear, nose and throat (ENT) tract (nasal and oral ulcers and crusting, nose bleeds, nasal polyps, paranasal sinusitis, cartilaginous destructions with granulomas on biopsy, hearing impairment and otorrhea), the eyes (conjunctival injection, eye pain, diplopia, proptosis, uveitis and retroorbital mass), the airways and lungs (hoarseness, cough, dyspnoea, stridor, pleuritic pain, pulmonary nodules, infiltrates, cavities and haemorrhage with granulomatous inflammation on biopsy), the kidneys (urinary abnormalities, elevated serum creatinine with variable degrees of proteinuria and rapidly-progressing pauci-immune glomerulonephritis on biopsy), the peripheral nervous system (mononeuritis) and the skin (purpura, focal necrosis, ulcers and leukocytoclastic vasculitis on biopsy).

### *Microscopic polyangiitis (MPA)*

Symptoms of systemic vasculitis, such as fever, weight loss, malaise, and fatigue. Symptoms and signs of small vessel vasculitis are as for GPA, but without granulomatous inflammation on biopsy. ENT tract manifestations are as in GPA but less frequent. The kidneys (rapidly progressing necrotizing pauci-immune glomerulonephritis) and the skin (necrotizing leukocytoclastic vasculitis) are commonly affected.

### *Eosinophilic GPA (EGPA)*

Many but not all individuals with EGPA have clear features of vasculitis. Symptoms of systemic vasculitis include fever, weight loss, malaise, fatigue and lymphadenopathy. Small vessel vasculitis of skin, peripheral nervous system, kidneys, heart, and gastrointestinal tract occurs. Cardiac involvement, including cardiomyopathy, contributes considerably to mortality in EGPA. Asthma is a near universal feature of EGPA and usually precedes vasculitis. Pulmonary infiltrates and >10% eosinophilia in peripheral blood are common. ENT involvement is frequent, including serous otitis media, allergic rhinitis, nasal obstruction, recurrent sinusitis and nasal polyposis.

### Box 3: Drug-induced vasculitis

Various drugs are associated with ANCA<sup>+</sup> vasculitis, with at least some features of AAV. Propylthiouracil (PTU) and, to a lesser extent, some other antithyroid drugs are fairly commonly associated with MPO-ANCA, with some people developing an MPA-like vasculitis<sup>275</sup>. Other drugs, including hydralazine (an anti-hypertensive vasodilator), minocycline (a tetracycline antibiotic) and cocaine adulterated with the antihelminthic agent levamisole are associated with ANCA<sup>+</sup> vasculitis<sup>276</sup>. Leukotriene antagonists have been implicated in EGPA, although causality is unclear<sup>277</sup>. The therapeutic agents associated with ANCA<sup>+</sup> vasculitis have been listed in detail elsewhere<sup>275</sup>. The epidemiology of drug-induced vasculitis largely reflects the patterns of use of these drugs in different populations (for example, PTU is widely used in China, whereas cocaine–levamisole is more common in the USA).

Clinically, a pANCA pattern is most common, but concurrent pANCA and cANCA positivity is common in cocaine–levamisole-induced vasculitis. Autoantibody specificities include MPO-ANCA and other, non-classical ANCA antigens (Box 1)<sup>275,276</sup>. Patients are often younger. Clinical manifestations can mimic AAV but are often less severe. Skin involvement may be more prominent, variant in nature and severe, particularly with cocaine–levamisole, and neutropenia can be present in vasculitis secondary to PTU or cocaine–levamisole. Anti-nuclear antibodies may be present, and hydralazine and minocycline are both associated with a lupus-like phenotype.

The mechanisms that underpin drug-induced vasculitis are unclear, although some clues exist. Levamisole and minocycline have immunomodulatory effects. PTU inhibits thyroid peroxidase, which shares sequence homology with MPO, and alters the structure and function of MPO in rats<sup>275,278</sup>. Furthermore, PTU induces abnormal NET formation *in vitro* and MPO-AAV *in vivo* in rats<sup>279</sup>. These data, as well as cocaine–levamisole's effects on NET formation<sup>280</sup> support aberrant autoantigen exposure in the development of drug-induced AAV.

Recognition of drug-induced vasculitis using an appropriate index of clinical suspicion, obtaining a medication history and enquiring as to illicit drug use, potentially with urinary screening, is central to the management of these conditions. Ceasing the potential offending agent often results in improvement. However, immunosuppression may be required and severe, organ-threatening disease can occur. Re-challenge with the suspected drug for diagnostic reasons is not recommended.

**Box 4. A patient's experience of AAV**

Being diagnosed with a rare and potentially life-threatening disease is something that no one expects to happen to them. Many patients with AAV have substantial delays in time to diagnosis and may have had serious hospitalizations and organ damage by the time they are diagnosed. But once the initial crisis is over, the ongoing work to achieve and maintain remission begins. It is important to note that AAV is typically a life-long chronic condition that will require constant vigilance by patients and their doctors. Fortunately, there have been new treatment options for AAV in recent years, especially new biologic therapies. However, these medications have little or no impact on the fatigue and pain caused by AAV. Thus, while patients may be 'in remission' with the help of ongoing immunosuppressive therapy, many of us still feel the relentless effects of this fatigue and pain on a daily basis. Patients also worry about the potential adverse effects from the treatments and the balancing of toxicity from the treatment against damage from the vasculitis itself. Better treatments for AAV are needed, especially less toxic substitutes for glucocorticoids. But also needed are better ways to measure disease activity, such as biomarkers that will distinguish our flares from symptoms caused by other things, such as treatment toxicity or infections. In addition, urgently needed are treatment options for symptoms that have a major impact on our quality of life, such as fatigue and pain, which often remain unaddressed. Greater patient input on setting treatment priorities will help focus attention on our unmet quality of life needs.

Jennifer Gordon, PhD. Dr. Gordon has EGPA and serves on the Vasculitis Foundation Vasculitis Patient-Powered Research Network.

## References

- 1 Watts, R. A. *et al.* Classification, epidemiology and clinical subgrouping of antineutrophil cytoplasmic antibody (ANCA)-associated vasculitis. *Nephrol. Dial. Transplant.* **30 Suppl 1**, i14-22 (2015).
- A granular and comprehensive review of contemporary AAV epidemiology.**
- 2 Berti, A., Cornec, D., Crowson, C. S., Specks, U. & Matteson, E. L. The Epidemiology of Antineutrophil Cytoplasmic Autoantibody-Associated Vasculitis in Olmsted County, Minnesota: A Twenty-Year US Population-Based Study. *Arthritis Rheum.* **69**, 2338-2350 (2017).
- 3 Mohammad, A. J., Jacobsson, L. T., Mahr, A. D., Sturfelt, G. & Segelmark, M. Prevalence of Wegener's granulomatosis, microscopic polyangiitis, polyarteritis nodosa and Churg-Strauss syndrome within a defined population in southern Sweden. *Rheumatology* **46**, 1329-1337 (2007).
- 4 Tan, J. A. *et al.* Mortality in ANCA-associated vasculitis: a meta-analysis of observational studies. *Ann. Rheum. Dis.* **76**, 1566-1574 (2017).
- 5 Basu, N. *et al.* The characterisation and determinants of quality of life in ANCA associated vasculitis. *Ann. Rheum. Dis.* **73**, 207-211 (2014).
- 6 Raimundo, K., Farr, A. M., Kim, G. & Duna, G. Clinical and Economic Burden of Antineutrophil Cytoplasmic Antibody-associated Vasculitis in the United States. *J. Rheumatol.* **42**, 2383-2391 (2015).
- 7 Knight, A., Ekbom, A., Brandt, L. & Askling, J. Increasing incidence of Wegener's granulomatosis in Sweden, 1975-2001. *J. Rheumatol.* **33**, 2060-2063 (2006).
- 8 Liu, L. J., Chen, M., Yu, F., Zhao, M. H. & Wang, H. Y. Evaluation of a new algorithm in classification of systemic vasculitis. *Rheumatology* **47**, 708-712 (2008).
- 9 Watts, R. A. *et al.* Renal vasculitis in Japan and the UK-are there differences in epidemiology and clinical phenotype ? *Nephrol. Dial. Transpl.* **23**, 3928-3931 (2008).
- 10 Watts, R. A. *et al.* Geoepidemiology of systemic vasculitis: comparison of the incidence in two regions of Europe. *Ann. Rheum. Dis.* **60**, 170-172 (2001).
- 11 O'Donnell, J. L., Stevanovic, V. R., Frampton, C., Stamp, L. K. & Chapman, P. T. Wegener's granulomatosis in New Zealand: evidence for a latitude-dependent incidence gradient. *Int. Med. J.* **37**, 242-246 (2007).
- 12 Cao, Y. *et al.* DRB1\*15 allele is a risk factor for PR3-ANCA disease in African Americans. *J. Am. Soc. Nephrol.* **22**, 1161-1167 (2011).
- 13 Mahr, A., Guillevin, L., Poissonnet, M. & Ayme, S. Prevalences of polyarteritis nodosa, microscopic polyangiitis, Wegener's granulomatosis, and Churg-Strauss syndrome in a French urban multiethnic population in 2000: a capture-recapture estimate. *Arthritis Rheum.* **51**, 92-99 (2004).
- 14 Pearce, F. A. *et al.* Incidence of ANCA-associated vasculitis in a UK mixed ethnicity population. *Rheumatology* **55**, 1656-1663 (2016).
- 15 Iudici, M. *et al.* Childhood-onset granulomatosis with polyangiitis and microscopic polyangiitis: systematic review and meta-analysis. *Orphanet J. Rare Dis.* **11**, 141 (2016).

- 16 Falk, R. J., Hogan, S., Carey, T. S. & Jennette, J. C. Clinical course of anti-neutrophil cytoplasmic autoantibody-associated glomerulonephritis and systemic vasculitis. The Glomerular Disease Collaborative Network. *Ann. Int. Med.* **113**, 656-663 (1990).
- 17 Tidman, M., Olander, R., Svalander, C. & Danielsson, D. Patients hospitalized because of small vessel vasculitides with renal involvement in the period 1975-95: organ involvement, anti-neutrophil cytoplasmic antibodies patterns, seasonal attack rates and fluctuation of annual frequencies. *J. Intern. Med.* **244**, 133-141 (1998).
- 18 Watts, R. A., Mooney, J., Skinner, J., Scott, D. G. & Macgregor, A. J. The contrasting epidemiology of granulomatosis with polyangiitis (Wegener's) and microscopic polyangiitis. *Rheumatology* **51**, 926-931 (2012).
- 19 Draibe, J. *et al.* Seasonal variations in the onset of positive and negative renal ANCA-associated vasculitis in Spain. *Clin. Kidney J.* **11**, 468-473 (2018).
- 20 Mahr, A. *et al.* Seasonal variations in onset of Wegener's granulomatosis: increased in summer? *J Rheumatol.* **33**, 1615-1622 (2006).
- 21 Aries, P. M., Herlyn, K., Reinhold-Keller, E. & Latza, U. No seasonal variation in the onset of symptoms of 445 patients with 'Wegener's granulomatosis. *Arthrit Rheum.* **59**, 904-904 (2008).
- 22 Stegeman, C. A. *et al.* Association of chronic nasal carriage of *Staphylococcus aureus* and higher relapse rates in Wegener granulomatosis. *Ann. Int. Med.* **120**, 12-17 (1994).

**A study that provides evidence for a putative causal role for infection in the relapse of GPA.**

- 23 Laudien, M. *et al.* Nasal carriage of *Staphylococcus aureus* and endonasal activity in Wegener's granulomatosis as compared to rheumatoid arthritis and chronic rhinosinusitis with nasal polyps. *Clin. Exp. Rheumatol.* **28**, S51-S55 (2010).
- 24 Lane, S. E., Watts, R. A., Bentham, G., Innes, N. J. & Scott, D. G. Are environmental factors important in primary systemic vasculitis? A case-control study. *Arthritis Rheum.* **48**, 814-823 (2003).
- 25 Nuyts, G. D. *et al.* Wegener Granulomatosis Is Associated to Exposure to Silicon-Compounds - a Case-Control Study. *Nephrol. Dial. Transpl.* **10**, 1162-1165 (1995).
- 26 Yashiro, M. *et al.* Significantly high regional morbidity of MPO-ANCA-related angitis and/or nephritis with respiratory tract involvement after the 1995 Great Earthquake in Kobe (Japan). *Am. J. Kidney Dis.* **35**, 889-895 (2000).
- 27 Takeuchi, Y. *et al.* The influence of the Great East Japan earthquake on microscopic polyangiitis: A retrospective observational study. *PLoS One* **12** (2017).
- 28 Farquhar, H. J. *et al.* Incidence of anti-neutrophil cytoplasmic antibody-associated vasculitis before and after the February 2011 Christchurch Earthquake. *Int. Med. J.* **47**, 57-61 (2017).
- 29 Cotch, M. F. *et al.* The epidemiology of Wegener's granulomatosis. Estimates of the five-year period prevalence, annual mortality, and geographic disease distribution from population-based data sources. *Arthritis Rheum.* **39**, 87-92 (1996).
- 30 Li, J. *et al.* The frequency of ANCA-associated vasculitis in a national database of hospitalized patients in China. *Arthritis Res. Ther.* **20**, 226 (2018).

- 31 Gatenby, P. A., Lucas, R. M., Engelsen, O., Ponsonby, A. L. & Clements, M. Antineutrophil Cytoplasmic Antibody-Associated Vasculitides: Could Geographic Patterns Be Explained by Ambient Ultraviolet Radiation? *Arthritis Care Res* **61**, 1417-1424 (2009).
- 32 McDermott, G. *et al.* Association of Cigarette Smoking With Antineutrophil Cytoplasmic Antibody-Associated Vasculitis. *JAMA Intern. Med.* **180**, 1-7 (2020).
- 33 Hutton, H. L., Holdsworth, S. R. & Kitching, A. R. ANCA-Associated Vasculitis: Pathogenesis, Models, and Preclinical Testing. *Sem. Nephrol.* **37**, 418-435 (2017).
- 34 Knight, A., Sandin, S. & Askling, J. Risks and relative risks of Wegener's granulomatosis among close relatives of patients with the disease. *Arthritis Rheum.* **58**, 302-307 (2008).
- 35 Jagiello, P. *et al.* New genomic region for Wegener's granulomatosis as revealed by an extended association screen with 202 apoptosis-related genes. *Hum. Genet.* **114**, 468-477 (2004).
- 36 Lyons, P. A. *et al.* Genetically distinct subsets within ANCA-associated vasculitis. *N. Eng. J. Med.* **367**, 214-223 (2012).
- 37 Xie, G. *et al.* Association of granulomatosis with polyangiitis (Wegener's) with HLA-DPB1\*04 and SEMA6A gene variants: evidence from genome-wide analysis. *Arthritis and rheumatism* **65**, 2457-2468 (2013).
- 38 Merkel, P. A. *et al.* Identification of Functional and Expression Polymorphisms Associated With Risk for Antineutrophil Cytoplasmic Autoantibody-Associated Vasculitis. *Arthritis & rheumatology (Hoboken, N.J.)* **69**, 1054-1066 (2017).
- Lyons et al. (2012), Xie et al. (2103) and Merkel et al. (2017) provide clear evidence for a genetic contribution to differences between PR3-AAV and MPO-AAV and links PR3-AAV to variation in the autoantigen itself.**
- 39 Siminovitch, K. A. PTPN22 and autoimmune disease. *Nat. Genet.* **36**, 1248-1249 (2004).
- 40 Sun, B. B. *et al.* Genomic atlas of the human plasma proteome. *Nature* **558**, 73-79 (2018).
- 41 Niehrs, A. *et al.* A subset of HLA-DP molecules serve as ligands for the natural cytotoxicity receptor NKp44. *Nat. Immunol.* **20**, 1129-1137 (2019).
- 42 Lyons, P. A. *et al.* Genome-wide association study of eosinophilic granulomatosis with polyangiitis reveals genomic loci stratified by ANCA status. *Nat. Commun.* **10**, 5120 (2019).
- 43 Sablé-Fourtassou, R. *et al.* Antineutrophil cytoplasmic antibodies and the Churg-Strauss syndrome. *Ann. Int. Med.* **143**, 632-638 (2005).
- 44 Sinico, R. A. *et al.* Prevalence and clinical significance of antineutrophil cytoplasmic antibodies in Churg-Strauss syndrome. *Arthritis Rheum.* **52**, 2926-2935 (2005).
- 45 Nakazawa, D. *et al.* Enhanced formation and disordered regulation of NETs in myeloperoxidase-ANCA-associated microscopic polyangiitis. *J. Am. Soc. Nephrol.* **25**, 990-997 (2014).
- 46 Ooi, J. D. *et al.* A plasmid-encoded peptide from *Staphylococcus aureus* induces anti-myeloperoxidase nephritogenic autoimmunity. *Nat. Comm.* **10**, 3392 (2019).



- 47 Jones, B. E. *et al.* Gene-Specific DNA Methylation Changes Predict Remission in Patients with ANCA-Associated Vasculitis. *J. Am. Soc. Nephrol.* **28**, 1175-1187 (2017).
- 48 Kessenbrock, K. *et al.* Netting neutrophils in autoimmune small-vessel vasculitis. *Nat. Med.* **15**, 623-625 (2009).
- 49 Martin, K. R. & Witko-Sarsat, V. Proteinase 3: the odd one out that became an autoantigen. *J. Leuk. Biol.* **102**, 689-698 (2017).
- 50 Witko-Sarsat, V. *et al.* A large subset of neutrophils expressing membrane proteinase 3 is a risk factor for vasculitis and rheumatoid arthritis. *J. Am. Soc. Nephrol.* **10**, 1224-1233 (1999).
- 51 Jerke, U. *et al.* Complement receptor Mac-1 is an adaptor for NB1 (CD177)-mediated PR3-ANCA neutrophil activation. *J. Biol. Chem.* **286**, 7070-7081 (2011).
- 52 Odobasic, D., Kitching, A. R. & Holdsworth, S. R. Neutrophil-Mediated Regulation of Innate and Adaptive Immunity: The Role of Myeloperoxidase. *J. Immunol. Res.* **2016**, 2349817 (2016).
- 53 Reiding, K. R. *et al.* Neutrophil myeloperoxidase harbors distinct site-specific peculiarities in its glycosylation. *J. Biol. Chem.* **294**, 20233-20245 (2019).
- 54 Kain, R. *et al.* Molecular mimicry in pauci-immune focal necrotizing glomerulonephritis. *Nat. Med.* **14**, 1088-1096 (2008).
- 55 Pendergraft, W. F. *et al.* Autoimmunity is triggered by cPR-3(105-201), a protein complementary to human autoantigen proteinase-3. *Nat. Med.* **10**, 72-79 (2004).
- 56 Yang, J. *et al.* ANCA patients have T cells responsive to complementary PR-3 antigen. *Kidney Int.* **74**, 1159-1169 (2008).
- 57 Suzuki, K. *et al.* A novel autoantibody against moesin in the serum of patients with MPO-ANCA-associated vasculitis. *Nephrol. Dial. Transplant.* **29**, 1168-1177 (2014).
- 58 Bautz, D. J. *et al.* Antibodies with dual reactivity to plasminogen and complementary PR3 in PR3-ANCA vasculitis. *J. Am. Soc. Nephrol.* **19**, 2421-2429 (2008).
- 59 Berden, A. E. *et al.* Anti-plasminogen antibodies compromise fibrinolysis and associate with renal histology in ANCA-associated vasculitis. *J. Am. Soc. Nephrol.* **21**, 2169-2179 (2010).
- 60 McCall, A. S. *et al.* Inhibitory Anti-Peroxidase Antibodies in Pulmonary-Renal Syndromes. *J. Am. Soc. Nephrol.* **29**, 2619-2625 (2018).
- 61 Simon, A. *et al.* Detection of Anti-Pentraxin-3 Autoantibodies in ANCA-Associated Vasculitis. *PLoS One* **11**, e0147091 (2016).
- 62 Roth, A. J. *et al.* Anti-LAMP-2 antibodies are not prevalent in patients with antineutrophil cytoplasmic autoantibody glomerulonephritis. *J. Am. Soc. Nephrol.* **23**, 545-555 (2012).
- 63 Tadema, H., Kallenberg, C. G., Stegeman, C. A. & Heeringa, P. Reactivity against complementary proteinase-3 is not increased in patients with PR3-ANCA-associated vasculitis. *PLoS One* **6**, e17972 (2011).
- 64 Olson, S. W. *et al.* Asymptomatic autoantibodies associate with future anti-glomerular basement membrane disease. *J. Am. Soc. Nephrol.* **22**, 1946-1952 (2011).

- 65 Cui, Z., Zhao, M. H., Segelmark, M. & Hellmark, T. Natural autoantibodies to myeloperoxidase, proteinase 3, and the glomerular basement membrane are present in normal individuals. *Kidney Int.* **78**, 590-597 (2010).
- 66 Tan, D. S. *et al.* Thymic deletion and regulatory T cells prevent antimyeloperoxidase GN. *J. Am. Soc. Nephrol.* **24**, 573-585 (2013).
- 67 Abdulahad, W. H. *et al.* Functional defect of circulating regulatory CD4+ T cells in patients with Wegener's granulomatosis in remission. *Arthritis Rheum.* **56**, 2080-2091 (2007).
- 68 Free, M. E. *et al.* Patients with antineutrophil cytoplasmic antibody-associated vasculitis have defective Treg cell function exacerbated by the presence of a suppression-resistant effector cell population. *Arthritis Rheum.* **65**, 1922-1933 (2013).
- 69 Bunch, D. O. *et al.* Decreased CD5(+) B cells in active ANCA vasculitis and relapse after rituximab. *Clin. J. Am. Soc. Nephrol.* **8**, 382-391 (2013).
- 70 Wilde, B. *et al.* Regulatory B cells in ANCA-associated vasculitis. *Ann. Rheum. Dis.* **72**, 1416-1419 (2013).
- 71 Free, M. E. *et al.* Restricted myeloperoxidase epitopes drive the adaptive immune response in MPO-ANCA vasculitis. *J. Autoimm.* **106**, 102306 (2020).
- 72 Ooi, J. D. *et al.* The immunodominant myeloperoxidase T-cell epitope induces local cell-mediated injury in antimyeloperoxidase glomerulonephritis. *Proc. Natl. Acad. Sci. USA* **109**, E2615-2624 (2012).

**Uses experimental models to demonstrate the role of MPO-specific CD4+ T cells in effector responses and define a nephritogenic MPO T cell epitope.**

- 73 Roth, A. J. *et al.* Epitope specificity determines pathogenicity and detectability in ANCA-associated vasculitis. *J. Clin. Invest.* **123**, 1773-1783 (2013).
- 74 Chang, J. *et al.* CD8+ T Cells Effect Glomerular Injury in Experimental Anti-Myeloperoxidase GN. *J. Am. Soc. Nephrol.* **28**, 47-55 (2017).
- 75 Falk, R. J., Becker, M., Terrell, R. & Jennette, J. C. Anti-myeloperoxidase autoantibodies react with native but not denatured myeloperoxidase. *Clin. Exp. Immunol.* **89**, 274-278 (1992).
- 76 Bini, P. *et al.* Antineutrophil cytoplasmic autoantibodies in Wegener's granulomatosis recognize conformational epitope(s) on proteinase 3. *J. Immunol.* **149**, 1409-1415 (1992).
- 77 Audrain, M. A. *et al.* Anti-native and recombinant myeloperoxidase monoclonals and human autoantibodies. *Clin. Exp. Immunol.* **107**, 127-134 (1997).
- 78 Nagai, M. *et al.* Serum levels of BAFF and APRIL in myeloperoxidase anti-neutrophil cytoplasmic autoantibody-associated renal vasculitis: association with disease activity. *Nephron Clin. Pract.* **118**, c339-345 (2011).
- 79 Holden, N. J. *et al.* ANCA-stimulated neutrophils release BlyS and promote B cell survival: a clinically relevant cellular process. *Ann. Rheum. Dis.* **70**, 2229-2233 (2011).
- 80 Oleinika, K., Mauri, C. & Salama, A. D. Effector and regulatory B cells in immune-mediated kidney disease. *Nat. Rev. Nephrol.* **15**, 11-26 (2019).

- 81 Steinmetz, O. M. *et al.* Analysis and classification of B-cell infiltrates in lupus and ANCA-associated nephritis. *Kidney Int.* **74**, 448-457 (2008).
- 82 Kelley, J. M. *et al.* IgA and IgG antineutrophil cytoplasmic antibody engagement of Fc receptor genetic variants influences granulomatosis with polyangiitis. *Proc. Natl. Acad. Sci. USA* **108**, 20736-20741 (2011).
- 83 Jayne, D. R. *et al.* Severe pulmonary hemorrhage and systemic vasculitis in association with circulating anti-neutrophil cytoplasm antibodies of IgM class only. *Clin. Nephrol.* **32**, 101-106 (1989).
- 84 Falk, R. J., Terrell, R. S., Charles, L. A. & Jennette, J. C. Anti-neutrophil cytoplasmic autoantibodies induce neutrophils to degranulate and produce oxygen radicals in vitro. *Proc. Natl. Acad. Sci. USA* **87**, 4115-4119 (1990).

**Links ANCAs to the pathogenesis of AAV by demonstrating that ANCAs activate neutrophils in vitro.**

- 85 Williams, J. M. *et al.* Activation of the G(i) heterotrimeric G protein by ANCA IgG F(ab')<sub>2</sub> fragments is necessary but not sufficient to stimulate the recruitment of those downstream mediators used by intact ANCA IgG. *J. Am. Soc. Nephrol.* **14**, 661-669 (2003).
- 86 Hewins, P., Williams, J. M., Wakelam, M. J. & Savage, C. O. Activation of Syk in neutrophils by antineutrophil cytoplasm antibodies occurs via Fcγ receptors and CD18. *J. Am. Soc. Nephrol.* **15**, 796-808 (2004).
- 87 Johnson, P. A., Alexander, H. D., McMillan, S. A. & Maxwell, A. P. Up-regulation of the granulocyte adhesion molecule Mac-1 by autoantibodies in autoimmune vasculitis. *Clin. Exp. Immunol.* **107**, 513-519 (1997).
- 88 Kuligowski, M. P. *et al.* Antimyeloperoxidase antibodies rapidly induce alpha-4-integrin-dependent glomerular neutrophil adhesion. *Blood* **113**, 6485-6494 (2009).
- 89 Tse, W. Y., Nash, G. B., Hewins, P., Savage, C. O. & Adu, D. ANCA-induced neutrophil F-actin polymerization: implications for microvascular inflammation. *Kidney Int.* **67**, 130-139 (2005).
- 90 Jennette, J. C. & Nachman, P. H. ANCA Glomerulonephritis and Vasculitis. *Clin. J. Am. Soc. Nephrol.* **12**, 1680-1691 (2017).
- 91 Hong, Y. *et al.* Anti-neutrophil cytoplasmic antibodies stimulate release of neutrophil microparticles. *J. Am. Soc. Nephrol.* **23**, 49-62 (2012).
- 92 Xiao, H. *et al.* Antineutrophil cytoplasmic autoantibodies specific for myeloperoxidase cause glomerulonephritis and vasculitis in mice. *J. Clin. Invest.* **110**, 955-963 (2002).

**A key study that uses experimental models to demonstrate the pathogenicity of anti-MPO antibodies in vivo.**

- 93 Bansal, P. J. & Tobin, M. C. Neonatal microscopic polyangiitis secondary to transfer of maternal myeloperoxidase-antineutrophil cytoplasmic antibody resulting in neonatal pulmonary hemorrhage and renal involvement. *Ann. Allergy Asthma Immunol.* **93**, 398-401 (2004).
- 94 Xiao, H. *et al.* The role of neutrophils in the induction of glomerulonephritis by anti-myeloperoxidase antibodies. *Am. J. Pathol.* **167**, 39-45 (2005).

- 95 Pfister, H. *et al.* Antineutrophil cytoplasmic autoantibodies against the murine homolog of proteinase 3 (Wegener autoantigen) are pathogenic in vivo. *Blood* **104**, 1411-1418 (2004).
- 96 Little, M. A. *et al.* Anti-proteinase 3 anti-neutrophil cytoplasm autoantibodies recapitulate systemic vasculitis in mice with a humanized immune system. *PLoS One* **7**, e28626 (2012).
- 97 Charles, L. A., Falk, R. J. & Jennette, J. C. Reactivity of antineutrophil cytoplasmic autoantibodies with mononuclear phagocytes. *J. Leuk. Biol.* **51**, 65-68 (1992).
- 98 O'Brien, E. C. *et al.* Intermediate monocytes in ANCA vasculitis: increased surface expression of ANCA autoantigens and IL-1beta secretion in response to anti-MPO antibodies. *Sci. Rep.* **5**, 11888 (2015).
- 99 Peschel, A. *et al.* Autoantibodies to hLAMP-2 in ANCA-negative pauci-immune focal necrotizing GN. *J. Am. Soc. Nephrol.* **25**, 455-463 (2014).
- 100 Espy, C. *et al.* Sialylation levels of anti-proteinase 3 antibodies are associated with the activity of granulomatosis with polyangiitis (Wegener's). *Arthritis Rheum.* **63**, 2105-2115 (2011).
- 101 Lardinois, O. M. *et al.* Immunoglobulins G from patients with ANCA-associated vasculitis are atypically glycosylated in both the Fc and Fab regions and the relation to disease activity. *PLoS One* **14**, e0213215 (2019).
- 102 Ciavatta, D. J. *et al.* Epigenetic basis for aberrant upregulation of autoantigen genes in humans with ANCA vasculitis. *J. Clin. Invest.* **120**, 3209-3219 (2010).
- 103 Ohlsson, S. M. *et al.* Neutrophils from vasculitis patients exhibit an increased propensity for activation by anti-neutrophil cytoplasmic antibodies. *Clin. Exp. Immunol.* **176**, 363-372 (2014).
- 104 Ohlsson, S. *et al.* Neutrophils from ANCA-associated vasculitis patients show an increased capacity to activate the complement system via the alternative pathway after ANCA stimulation. *PLoS One* **14**, e0218272 (2019).
- 105 Summers, S. A. *et al.* Intrinsic renal cell and leukocyte-derived TLR4 aggravate experimental anti-MPO glomerulonephritis. *Kidney Int.* **78**, 1263-1274 (2010).
- 106 Tadema, H. *et al.* Bacterial DNA motifs trigger ANCA production in ANCA-associated vasculitis in remission. *Rheumatology* **50**, 689-696 (2011).
- 107 Holle, J. U. *et al.* Toll-like receptor TLR2 and TLR9 ligation triggers neutrophil activation in granulomatosis with polyangiitis. *Rheumatology* **52**, 1183-1189 (2013).
- 108 Wang, C. *et al.* High mobility group box 1 contributes to anti-neutrophil cytoplasmic antibody-induced neutrophils activation through receptor for advanced glycation end products (RAGE) and Toll-like receptor 4. *Arthritis Res. Ther.* **17**, 64 (2015).
- 109 Xiao, H. *et al.* C5a receptor (CD88) blockade protects against MPO-ANCA GN. *J. Am. Soc. Nephrol.* **25**, 225-231 (2014).
- 110 Jayne, D. R. W. *et al.* Randomized Trial of C5a Receptor Inhibitor Avacopan in ANCA-Associated Vasculitis. *J. Am. Soc. Nephrol.* **28**, 2756-2767 (2017).
- 111 Merkel, P. A. *et al.* A randomised, double-blind, active-controlled study of Avacopan in anti-neutrophil cytoplasmic antibody (ANCA)-associated vasculitis. *Ann. Rheum. Dis.* **79 (Suppl 1)** (2020).

- 112 Xiao, H., Schreiber, A., Heeringa, P., Falk, R. J. & Jennette, J. C. Alternative complement pathway in the pathogenesis of disease mediated by anti-neutrophil cytoplasmic autoantibodies. *Am. J. Pathol.* **170**, 52-64 (2007).
- 113 Huugen, D. *et al.* Inhibition of complement factor C5 protects against anti-myeloperoxidase antibody-mediated glomerulonephritis in mice. *Kidney Int.* **71**, 646-654 (2007).
- 114 Hao, J., Meng, L. Q., Xu, P. C., Chen, M. & Zhao, M. H. p38MAPK, ERK and PI3K signaling pathways are involved in C5a-primed neutrophils for ANCA-mediated activation. *PLoS One* **7**, e38317 (2012).
- 115 Dick, J. *et al.* C5a receptor 1 promotes autoimmunity, neutrophil dysfunction and injury in experimental anti-myeloperoxidase glomerulonephritis. *Kidney Int.* **93**, 615-625 (2018).
- 116 Freeley, S. J. *et al.* Experimentally-induced anti-myeloperoxidase vasculitis does not require properdin, MASP-2 or bone marrow-derived C5. *J. Pathol.* **240**, 61-71 (2016).
- 117 Gou, S. J., Yuan, J., Wang, C., Zhao, M. H. & Chen, M. Alternative complement pathway activation products in urine and kidneys of patients with ANCA-associated GN. *Clin. J. Am. Soc. Nephrol.* **8**, 1884-1891 (2013).
- 118 Chen, M., Jayne, D. R. W. & Zhao, M. H. Complement in ANCA-associated vasculitis: mechanisms and implications for management. *Nat. Rev. Nephrol.* **13**, 359-367 (2017).
- 119 Manenti, L. *et al.* Association of Serum C3 Concentration and Histologic Signs of Thrombotic Microangiopathy with Outcomes among Patients with ANCA-Associated Renal Vasculitis. *Clin. J. Am. Soc. Nephrol.* **10**, 2143-2151 (2015).
- 120 Augusto, J. F. *et al.* Low Serum Complement C3 Levels at Diagnosis of Renal ANCA-Associated Vasculitis Is Associated with Poor Prognosis. *PLoS One* **11**, e0158871 (2016).
- 121 Calderwood, J. W., Williams, J. M., Morgan, M. D., Nash, G. B. & Savage, C. O. ANCA induces beta2 integrin and CXC chemokine-dependent neutrophil-endothelial cell interactions that mimic those of highly cytokine-activated endothelium. *J. Leuk. Biol.* **77**, 33-43 (2005).
- 122 Little, M. A. *et al.* Antineutrophil cytoplasm antibodies directed against myeloperoxidase augment leukocyte-microvascular interactions in vivo. *Blood* **106**, 2050-2058 (2005).
- 123 Nolan, S. L. *et al.* Mechanisms of ANCA-mediated leukocyte-endothelial cell interactions in vivo. *J. Am. Soc. Nephrol.* **19**, 973-984 (2008).
- 124 Brouwer, E. *et al.* Predominance of IgG1 and IgG4 subclasses of anti-neutrophil cytoplasmic autoantibodies (ANCA) in patients with Wegener's granulomatosis and clinically related disorders. *Clin. Exp. Immunol.* **83**, 379-386 (1991).
- 125 Abdulahad, W. H. *et al.* Increased frequency of circulating IL-21 producing Th-cells in patients with granulomatosis with polyangiitis (GPA). *Arthritis Res. Ther.* **15**, R70 (2013).
- 126 Abdulahad, W. H., Kallenberg, C. G., Limburg, P. C. & Stegeman, C. A. Urinary CD4+ effector memory T cells reflect renal disease activity in antineutrophil cytoplasmic antibody-associated vasculitis. *Arthritis Rheum.* **60**, 2830-2838 (2009).

- 127 Gephardt, G. N., Ahmad, M. & Tubbs, R. R. Pulmonary vasculitis (Wegener's granulomatosis). Immunohistochemical study of T and B cell markers. *Am. J. Med.* **74**, 700-704 (1983).
- 128 Weidner, S., Carl, M., Riess, R. & Rupperecht, H. D. Histologic analysis of renal leukocyte infiltration in antineutrophil cytoplasmic antibody-associated vasculitis: importance of monocyte and neutrophil infiltration in tissue damage. *Arthritis Rheum.* **50**, 3651-3657 (2004).
- 129 O'Sullivan, K. M. *et al.* Renal participation of myeloperoxidase in antineutrophil cytoplasmic antibody (ANCA)-associated glomerulonephritis. *Kidney Int.* **88**, 1030-1046 (2015).
- 130 Ludviksson, B. R. *et al.* Active Wegener's granulomatosis is associated with HLA-DR+ CD4+ T cells exhibiting an unbalanced Th1-type T cell cytokine pattern: reversal with IL-10. *J. Immunol.* **160**, 3602-3609 (1998).
- 131 Nogueira, E. *et al.* Serum IL-17 and IL-23 levels and autoantigen-specific Th17 cells are elevated in patients with ANCA-associated vasculitis. *Nephrol. Dial. Transplant.* **25**, 2209-2217 (2010).
- 132 Csernok, E. *et al.* Cytokine profiles in Wegener's granulomatosis: predominance of type 1 (Th1) in the granulomatous inflammation. *Arthritis Rheum.* **42**, 742-750 (1999).
- 133 Chanouzas, D. *et al.* The host cellular immune response to cytomegalovirus targets the endothelium and is associated with increased arterial stiffness in ANCA-associated vasculitis. *Arthritis Res. Ther.* **20**, 194 (2018).
- 134 Chanouzas, D. *et al.* Subclinical Reactivation of Cytomegalovirus Drives CD4+CD28null T-Cell Expansion and Impaired Immune Response to Pneumococcal Vaccination in Antineutrophil Cytoplasmic Antibody-Associated Vasculitis. *J. Infect. Dis.* **219**, 234-244 (2019).
- 135 McKinney, E. F. *et al.* A CD8+ T cell transcription signature predicts prognosis in autoimmune disease. *Nat. Med.* **16**, 586-591, 581p following 591 (2010).

**Identifies CD8<sup>+</sup> T cell transcription signatures that correlate with risk of remaining in remission or to flare in AAV, leading to prospective biomarker studies.**

- 136 McKinney, E. F., Lee, J. C., Jayne, D. R., Lyons, P. A. & Smith, K. G. T-cell exhaustion, co-stimulation and clinical outcome in autoimmunity and infection. *Nature* **523**, 612-616 (2015).
- 137 Bajema, I. M., Hagen, E. C., de Heer, E., van der Woude, F. J. & Bruijn, J. A. Colocalization of ANCA-antigens and fibrinoid necrosis in ANCA-associated vasculitis. *Kidney international* **60**, 2025-2030 (2001).
- 138 Gan, P. Y. *et al.* Biologicals targeting T helper cell subset differentiating cytokines are effective in the treatment of murine anti-myeloperoxidase glomerulonephritis. *Kidney Int.* **96**, 1121-1133 (2019).
- 139 Rousselle, A., Kettritz, R. & Schreiber, A. Monocytes Promote Crescent Formation in Anti-Myeloperoxidase Antibody-Induced Glomerulonephritis. *Am. J. Pathol.* **187**, 1908-1915 (2017).

- 140 Terrier, B. *et al.* Interleukin-25: a cytokine linking eosinophils and adaptive immunity in Churg-Strauss syndrome. *Blood* **116**, 4523-4531 (2010).
- 141 Kiene, M. *et al.* Elevated interleukin-4 and interleukin-13 production by T cell lines from patients with Churg-Strauss syndrome. *Arthritis Rheum.* **44**, 469-473 (2001).
- 142 Jakiela, B. *et al.* Increased production of IL-5 and dominant Th2-type response in airways of Churg-Strauss syndrome patients. *Rheumatology* **51**, 1887-1893 (2012).
- 143 Wechsler, M. E. *et al.* Mepolizumab or Placebo for Eosinophilic Granulomatosis with Polyangiitis. *N. Eng. J. Med.* **376**, 1921-1932 (2017).

**A clinical trial that demonstrates that the anti-IL-5 therapy mepolizumab is an effective treatment for EGPA.**

- 144 Biasci, D. *et al.* A blood-based prognostic biomarker in IBD. *Gut* **68**, 1386-1395 (2019).
- 145 Jennette, J. C. *et al.* 2012 revised International Chapel Hill Consensus Conference Nomenclature of Vasculitides. *Arthritis Rheum.* **65**, 1-11 (2013).

**A key classification paper that provides definitive definitions for each type of vasculitis.**

- 146 Watts, R. A. & Robson, J. Introduction, epidemiology and classification of vasculitis. *Best Pract. Res. Clin. Rheumat.* **32**, 3-20 (2018).
- 147 Luqmani, R. A., Suppiah, R., Grayson, P. C., Merkel, P. A. & Watts, R. Nomenclature and classification of vasculitis - update on the ACR/EULAR diagnosis and classification of vasculitis study (DCVAS). *Clin. Exp. Immunol.* **164 Suppl 1**, 11-13 (2011).
- 148 Kariv, R., Sidi, Y. & Gur, H. Systemic vasculitis presenting as a tumorlike lesion. Four case reports and an analysis of 79 reported cases. *Medicine* **79**, 349-359 (2000).
- 149 Jennette, J. C. & Falk, R. J. Small-vessel vasculitis. *N. Eng. J. Med.* **337**, 1512-1523 (1997).

**Reviews clinical and other aspects of small-vessel vasculitides, including AAVs.**

- 150 Borie, R. & Crestani, B. Antineutrophil Cytoplasmic Antibody-Associated Lung Fibrosis. *Sem. Res. Crit. Care Med.* **39**, 465-470 (2018).
- 151 Furuta, S. *et al.* Comparison of phenotype and outcome in microscopic polyangiitis between Europe and Japan. *J. Rheumatol.* **41**, 325-333 (2014).
- 152 Suzuki, A. *et al.* Chest High-Resolution CT Findings of Microscopic Polyangiitis: A Japanese First Nationwide Prospective Cohort Study. *AJR Am. J. Roentgenol.* April 1-11 (2019).
- 153 McAdoo, S. P. *et al.* Patients double-seropositive for ANCA and anti-GBM antibodies have varied renal survival, frequency of relapse, and outcomes compared to single-seropositive patients. *Kidney Int.* **92**, 693-702 (2017).
- 154 Turner-Stokes, T. *et al.* Positive antineutrophil cytoplasmic antibody serology in patients with lupus nephritis is associated with distinct histopathologic features on renal biopsy. *Kidney Int.* **92**, 1223-1231 (2017).
- 155 Anders, H. J. *et al.* MPO-ANCA-Positive crescentic glomerulonephritis: a distinct entity of scleroderma renal disease? *Am. J. Kidney Dis.* **33**, e3 (1999).

- 156 Quéméneur, T. *et al.* Systemic vasculitis during the course of systemic sclerosis: report of 12 cases and review of the literature. *Medicine* **92**, 1-9 (2013).
- 157 Iudici, M. *et al.* Childhood- versus adult-onset ANCA-associated vasculitides: A nested, matched case-control study from the French Vasculitis Study Group Registry. *Autoimmun. Rev.* **17**, 108-114 (2018).
- 158 Antonelou, M., Perea Ortega, L., Harvey, J. & Salama, A. D. Anti-myeloperoxidase antibody positivity in patients without primary systemic vasculitis. *Clin. Exp. Rheumatol.* **37 Suppl 117**, 86-89 (2019).
- 159 Berti, A. *et al.* Brief Report: Circulating Cytokine Profiles and Antineutrophil Cytoplasmic Antibody Specificity in Patients With Antineutrophil Cytoplasmic Antibody-Associated Vasculitis. *Arthritis Rheum.* **70**, 1114-1121 (2018).
- 160 Unizony, S. *et al.* Clinical outcomes of treatment of anti-neutrophil cytoplasmic antibody (ANCA)-associated vasculitis based on ANCA type. *Ann. Rheum. Dis.* **75**, 1166-1169 (2016).
- 161 Cornec, D., Cornec-Le Gall, E., Fervenza, F. C. & Specks, U. ANCA-associated vasculitis - clinical utility of using ANCA specificity to classify patients. *Nat. Rev. Rheumatol.* **12**, 570-579 (2016).
- 162 Bossuyt, X. *et al.* Position paper: Revised 2017 international consensus on testing of ANCAs in granulomatosis with polyangiitis and microscopic polyangiitis. *Nat. Rev. Rheumatol.* **13**, 683-692 (2017).

**Contemporary recommendations on ANCA testing methods and procedures in suspected AAV.**

- 163 Venhoff, N. *et al.* Reconstitution of the peripheral B lymphocyte compartment in patients with ANCA-associated vasculitides treated with rituximab for relapsing or refractory disease. *Autoimmunity* **47**, 401-408 (2014).
- 164 von Borstel, A. *et al.* CD27(+)CD38(hi) B Cell Frequency During Remission Predicts Relapsing Disease in Granulomatosis With Polyangiitis Patients. *Front. Immunol.* **10**, 2221 (2019).
- 165 O'Reilly, V. P. *et al.* Urinary Soluble CD163 in Active Renal Vasculitis. *J. Am. Soc. Nephrol.* **27**, 2906-2916 (2016).

**This study identifies soluble urinary CD163 as a potential biomarker for renal flares of AAV.**

- 166 Tedesco, M., Gallieni, M., Pellegata, F., Cozzolino, M. & Alberici, F. Update on ANCA-associated vasculitis: from biomarkers to therapy. *J. Nephrol.* **32**, 871-882 (2019).
- 167 Dekkema, G. J. *et al.* Urinary and serum soluble CD25 complements urinary soluble CD163 to detect active renal anti-neutrophil cytoplasmic autoantibody-associated vasculitis: a cohort study. *Nephrol. Dial. Transplant.* **34**, 234-242 (2019).
- 168 Ponte, C., Agueda, A. F. & Luqmani, R. A. Clinical features and structured clinical evaluation of vasculitis. *Best Pract. Res. Clin. Rheumatol.* **32**, 31-51 (2018).
- 169 Mukhtyar, C. *et al.* Modification and validation of the Birmingham Vasculitis Activity Score (version 3). *Ann. Rheum. Dis.* **68**, 1827-1832 (2009).

**An update of the BVAS, which is widely used in clinical trials to assess disease activity.**



- 170 Hellmich, B. *et al.* EULAR recommendations for conducting clinical studies and/or  
clinical trials in systemic vasculitis: focus on anti-neutrophil cytoplasm antibody-  
associated vasculitis. *Ann. Rheum. Dis.* **66**, 605-617 (2007).
- 171 Guillevin, L. *et al.* The Five-Factor Score revisited: assessment of prognoses of  
systemic necrotizing vasculitides based on the French Vasculitis Study Group (FVSG)  
cohort. *Medicine* **90**, 19-27 (2011).
- 172 Exley, A. R. *et al.* Development and initial validation of the Vasculitis Damage Index  
for the standardized clinical assessment of damage in the systemic vasculitides.  
*Arthritis Rheum.* **40**, 371-380 (1997).
- 173 Merkel, P. A. *et al.* The OMERACT core set of outcome measures for use in clinical  
trials of ANCA-associated vasculitis. *J. Rheumatol.* **38**, 1480-1486 (2011).
- 174 Morgan, M. D. *et al.* Increased incidence of cardiovascular events in patients with  
antineutrophil cytoplasmic antibody-associated vasculitides: a matched-pair cohort  
study. *Arthritis Rheum.* **60**, 3493-3500 (2009).
- 175 Robson, J. *et al.* Damage in the anca-associated vasculitides: long-term data from the  
European vasculitis study group (EUVAS) therapeutic trials. *Ann. Rheum. Dis.* **74**,  
177-184 (2015).
- 176 Emmi, G. *et al.* Thrombosis in vasculitis: from pathogenesis to treatment. *Thromb. J.*  
**13**, 15 (2015).
- 177 Merkel, P. A. *et al.* Brief communication: high incidence of venous thrombotic events  
among patients with Wegener granulomatosis: the Wegener's Clinical Occurrence of  
Thrombosis (WeCLOT) Study. *Ann. Int. Med.* **142**, 620-626 (2005).
- 178 Whyte, A. F., Smith, W. B., Sinkar, S. N., Kette, F. E. & Hissaria, P. Clinical and  
laboratory characteristics of 19 patients with Churg-Strauss syndrome from a single  
South Australian centre. *Int. Med. J.* **43**, 784-790 (2013).
- 179 Mohammad, A. J. *et al.* Pulmonary Involvement in Antineutrophil Cytoplasmic  
Antibodies (ANCA)-associated Vasculitis: The Influence of ANCA Subtype. *J.*  
*Rheumatol.* **44**, 1458-1467 (2017).
- 180 Quinn, K. A. *et al.* Subglottic stenosis and endobronchial disease in granulomatosis  
with polyangiitis. *Rheumatology* **58**, 2203-2211 (2019).
- 181 Churg, A. in *Oxford Textbook of Vasculitis* (eds G. V. Ball, B. J. Fessler, & S. L.  
Bridges) Ch. 9, 101-108, Oxford University Press (2014).
- 182 Berden, A. E. *et al.* Histopathologic classification of ANCA-associated  
glomerulonephritis. *J. Am. Soc. Nephrol.* **21**, 1628-1636 (2010).

**A classification system based on glomerular histopathology, which is associated with the  
outcome of renal disease in AAV.**

- 183 Rahmattulla, C., Bruijn, J. A. & Bajema, I. M. Histopathological classification of  
antineutrophil cytoplasmic antibody-associated glomerulonephritis: an update. *Curr*  
*Opin. Nephrol. Hyperten.* **23**, 224-231 (2014).
- 184 Brix, S. R. *et al.* Development and validation of a renal risk score in ANCA-  
associated glomerulonephritis. *Kidney Int.* **94**, 1177-1188 (2018).
- 185 Zhang, S., Yuan, D. & Tan, G. Neurological Involvement in Primary Systemic  
Vasculitis. *Front. Neurol.* **10**, 430 (2019).

- 186 Flossmann, O. *et al.* Long-term patient survival in ANCA-associated vasculitis. *Ann. Rheum. Dis.* **70**, 488-494 (2011).
- 187 Rhee, R. L. *et al.* Trends in Long-Term Outcomes Among Patients With Antineutrophil Cytoplasmic Antibody-Associated Vasculitis With Renal Disease. *Arthritis Rheum.* **68**, 1711-1720 (2016).
- 188 Steinberg, A. W., Wechsler, M. E. & Fernandez Perez, E. R. Trends in Antineutrophil Cytoplasmic Autoantibody-Associated Vasculitis-Related Mortality in the United States, 1999 to 2017. *Ann. Int. Med.* (2019).
- 189 Scherlinger, M. *et al.* Worldwide trends in all-cause mortality of auto-immune systemic diseases between 2001 and 2014. *Autoimmun. Rev.* **19**, 102531 (2020).
- 190 Hogan, S. L. *et al.* Predictors of relapse and treatment resistance in antineutrophil cytoplasmic antibody-associated small-vessel vasculitis. *Ann. Int. Med.* **143**, 621-631 (2005).
- 191 Gopaluni, S. *et al.* Effect of Disease Activity at Three and Six Months After Diagnosis on Long-Term Outcomes in Antineutrophil Cytoplasmic Antibody-Associated Vasculitis. *Arthritis Rheum.* **71**, 784-791 (2019).
- 192 Walsh, M. *et al.* Plasma Exchange and Glucocorticoids in Severe ANCA-Associated Vasculitis. *N. Eng. J. Med.* **382**, 622-631 (2020).

**A clinical trial of induction therapies in severe AAV that demonstrates that lower-dose glucocorticoids are non-inferior to standard doses and that routine use of plasma exchange as adjuvant provides no additional benefit.**

- 193 Smith, R., Jayne, D. & Merkel, P. A randomized, controlled trial of rituximab versus azathioprine after induction of remission with rituximab for patients with ANCA-associated vasculitis and relapsing disease (abstract). *Arthritis Rheum.* **71 (Suppl 10)** (2019).
- 194 de Groot, K. *et al.* Pulse versus daily oral cyclophosphamide for induction of remission in antineutrophil cytoplasmic antibody-associated vasculitis: a randomized trial. *Ann. Int. Med.* **150**, 670-680 (2009).
- 195 Harper, L. *et al.* Pulse versus daily oral cyclophosphamide for induction of remission in ANCA-associated vasculitis: long-term follow-up. *Ann. Rheum. Dis.* **71**, 955-960 (2012).
- 196 Stone, J. H. *et al.* Rituximab versus cyclophosphamide for ANCA-associated vasculitis. *N. Eng. J. Med.* **363**, 221-232 (2010).

**A clinical trial that demonstrates that rituximab is at least equivalent to cyclophosphamide in the induction of remission in AAV.**

- 197 Specks, U. *et al.* Efficacy of remission-induction regimens for ANCA-associated vasculitis. *N. Eng. J. Med.* **369**, 417-427 (2013).
- 198 Jones, R. B. *et al.* Rituximab versus cyclophosphamide in ANCA-associated renal vasculitis. *N. Eng. J. Med.* **363**, 211-220 (2010).
- 199 Pepper, R. J. *et al.* A novel glucocorticoid-free maintenance regimen for anti-neutrophil cytoplasm antibody-associated vasculitis. *Rheumatology* **58**, 260-268 (2019).

- 200 De Groot, K. *et al.* Randomized trial of cyclophosphamide versus methotrexate for induction of remission in early systemic antineutrophil cytoplasmic antibody-associated vasculitis. *Arthritis Rheum.* **52**, 2461-2469 (2005).
- 201 Jones, R. B. *et al.* Mycophenolate mofetil versus cyclophosphamide for remission induction in ANCA-associated vasculitis: a randomised, non-inferiority trial. *Ann. Rheum. Dis.* **78**, 399-405 (2019).
- 202 Jayne, D. R. *et al.* Randomized trial of plasma exchange or high-dosage methylprednisolone as adjunctive therapy for severe renal vasculitis. *J. Am. Soc. Nephrol.* **18**, 2180-2188 (2007).
- 203 Jayne, D. R. *et al.* Intravenous immunoglobulin for ANCA-associated systemic vasculitis with persistent disease activity. *QJM* **93**, 433-439 (2000).
- 204 Guillevin, L. *et al.* Rituximab versus azathioprine for maintenance in ANCA-associated vasculitis. *N. Eng. J. Med.* **371**, 1771-1780 (2014).

**A clinical trial demonstrating that rituximab is a viable treatment and superior to azathioprine in the maintenance of remission in AAV.**

- 205 Karras, A. *et al.* Randomised controlled trial of prolonged treatment in the remission phase of ANCA-associated vasculitis. *Ann. Rheum. Dis.* **76**, 1662-1668 (2017).
- 206 Charles, P. *et al.* Long-Term Rituximab Use to Maintain Remission of Antineutrophil Cytoplasmic Antibody-Associated Vasculitis: A Randomized Trial. *Ann. Int. Med.* Jun 2. doi:10.7326/M19-3827, online ahead of print (2020).
- 207 Gopaluni, S. *et al.* Rituximab versus azathioprine as therapy for maintenance of remission for anti-neutrophil cytoplasm antibody-associated vasculitis (RITAZAREM): study protocol for a randomized controlled trial. *Trials* **18**, 112 (2017).
- 208 Tieu, J. *et al.* Rituximab for maintenance of remission in ANCA-associated vasculitis: expert consensus guidelines. *Rheumatology* **59**, e24-e32 (2020).
- 209 Charles, P. *et al.* Comparison of individually tailored versus fixed-schedule rituximab regimen to maintain ANCA-associated vasculitis remission: results of a multicentre, randomised controlled, phase III trial (MAINRITSAN2). *Ann. Rheum. Dis.* **77**, 1143-1149 (2018).
- 210 Puechal, X. *et al.* Adding Azathioprine to Remission-Induction Glucocorticoids for Eosinophilic Granulomatosis With Polyangiitis (Churg-Strauss), Microscopic Polyangiitis, or Polyarteritis Nodosa Without Poor Prognosis Factors: A Randomized, Controlled Trial. *Arthritis Rheum.* **69**, 2175-2186 (2017).
- 211 Steinfeld, J. *et al.* Evaluation of clinical benefit from treatment with mepolizumab for patients with eosinophilic granulomatosis with polyangiitis. *J. Allergy Clin. Immunol.* **143**, 2170-2177 (2019).
- 212 Teixeira, V., Mohammad, A. J., Jones, R. B., Smith, R. & Jayne, D. Efficacy and safety of rituximab in the treatment of eosinophilic granulomatosis with polyangiitis. *RMD Open* **5**, e000905 (2019).
- 213 Roberts, D. M. *et al.* Immunoglobulin G replacement for the treatment of infective complications of rituximab-associated hypogammaglobulinemia in autoimmune disease: a case series. *J. Autoimmun.* **57**, 24-29 (2015).

- 214 De Sousa, E., Smith, R., Chaudhry, A., Willcocks, L. & Jayne, D. Venous thromboembolism with concurrent pulmonary haemorrhage in systemic vasculitis. *Nephrol. Dial. Transplant.* **27**, 4357-4361 (2012).
- 215 Suppiah, R. *et al.* A model to predict cardiovascular events in patients with newly diagnosed Wegener's granulomatosis and microscopic polyangiitis. *Arthritis Care Res.* **63**, 588-596 (2011).
- 216 Westman, K. W., Bygren, P. G., Olsson, H., Ranstam, J. & Wieslander, J. Relapse rate, renal survival, and cancer morbidity in patients with Wegener's granulomatosis or microscopic polyangiitis with renal involvement. *J. Am. Soc. Nephrol.* **9**, 842-852 (1998).
- 217 Heijl, C. *et al.* Incidence of malignancy in patients treated for antineutrophil cytoplasm antibody-associated vasculitis: follow-up data from European Vasculitis Study Group clinical trials. *Ann. Rheum. Dis.* **70**, 1415-1421 (2011).
- 218 van Daalen, E. E. *et al.* Effect of rituximab on malignancy risk in patients with ANCA-associated vasculitis. *Ann. Rheum. Dis.* **76**, 1064-1069 (2017).
- 219 Buckley, L. & Humphrey, M. B. Glucocorticoid-Induced Osteoporosis. *N. Eng. J. Med.* **379**, 2547-2556 (2018).
- 220 Martinez Del Pero, M., Jayne, D., Chaudhry, A., Sivasothy, P. & Jani, P. Long-term outcome of airway stenosis in granulomatosis with polyangiitis (Wegener granulomatosis): an observational study. *JAMA Otolaryngol. Head Neck Surg.* **140**, 1038-1044 (2014).
- 221 Hruskova, Z. *et al.* Characteristics and Outcomes of Granulomatosis With Polyangiitis (Wegener) and Microscopic Polyangiitis Requiring Renal Replacement Therapy: Results From the European Renal Association-European Dialysis and Transplant Association Registry. *Am. J. Kidney Dis.* **66**, 613-620 (2015).
- 222 Herlyn, K., Hellmich, B., Seo, P., Merkel, P. A. & Consortium, V. C. R. Patient-Reported Outcome Assessment in Vasculitis May Provide Important Data and a Unique Perspective. *Arthritis Care Res.* **62**, 1639-1645 (2010).
- 223 Robson, J. C. *et al.* Patient perceptions of glucocorticoids in anti-neutrophil cytoplasmic antibody-associated vasculitis. *Rheumatol. Int.* **38**, 675-682 (2018).

**A study reporting the effects of glucocorticoids in AAV, both positive and negative, from the patients' perspective.**

- 224 Miloslavsky, E. M. *et al.* Development of a Glucocorticoid Toxicity Index (GTI) using multicriteria decision analysis. *Ann. Rheum. Dis.* **76**, 543-546 (2017).
- 225 Robson, J. C. *et al.* Validation of the ANCA-associated vasculitis patient-reported outcomes (AAV-PRO) questionnaire. *Ann. Rheum. Dis.* **77**, 1157-1164 (2018).

**Validation study of an AAV-specific PRO measure.**

- 226 Robson, J. C. *et al.* OMERACT Endorsement of Patient-reported Outcome Instruments in Antineutrophil Cytoplasmic Antibody-associated Vasculitis. *J. Rheumatol.* **44**, 1529-1535 (2017).
- 227 O'Malley, L. *et al.* The Longitudinal Course of Fatigue in Antineutrophil Cytoplasmic Antibody-associated Vasculitis. *J. Rheumatol.* **47**, 572-579 (2020).

**This study defines the incidence and time course of fatigue, an important symptom for patients with AAV.**

- 228 Hessels, A. C. *et al.* Leg muscle strength is reduced and is associated with physical quality of life in Antineutrophil cytoplasmic antibody-associated vasculitis. *PLoS One* **14** (2019).
- 229 Harper, L. *et al.* Treatment of fatigue with physical activity and behavioural change support in vasculitis: study protocol for an open-label randomised controlled feasibility study. *BMJ Open* **8**, e023769 (2018).
- 230 Moran, S. M. *et al.* Urinary soluble CD163 and monocyte chemoattractant protein-1 in the identification of subtle renal flare in anti-neutrophil cytoplasmic antibody-associated vasculitis. *Nephrol. Dial. Transplant.* **35**, 283-291 (2020).
- 231 Pagnoux, C. *et al.* Treatment of systemic necrotizing vasculitides in patients aged sixty-five years or older: results of a multicenter, open-label, randomized controlled trial of corticosteroid and cyclophosphamide-based induction therapy. *Arthritis Rheum* **67**, 1117-1127 (2015).
- 232 Jones, R. B. *et al.* Rituximab versus cyclophosphamide in ANCA-associated renal vasculitis: 2-year results of a randomised trial. *Ann. Rheum. Dis.* **74**, 1178-1182 (2015).
- 233 Walsh, M. *et al.* Long-term follow-up of patients with severe ANCA-associated vasculitis comparing plasma exchange to intravenous methylprednisolone treatment is unclear. *Kidney Int.* **84**, 397-402 (2013).
- 234 Merkel, P. A., Jayne, D. R., Wang, C., Hillson, J. & Bekker, P. Evaluation of the Safety and Efficacy of Avacopan, a C5a Receptor Inhibitor, in Patients With Antineutrophil Cytoplasmic Antibody-Associated Vasculitis Treated Concomitantly With Rituximab or Cyclophosphamide/Azathioprine: Protocol for a Randomized, Double-Blind, Active-Controlled, Phase 3 Trial. *JMIR research protocols* **9**, e16664 (2020).
- 235 Faurschou, M. *et al.* Brief Report: long-term outcome of a randomized clinical trial comparing methotrexate to cyclophosphamide for remission induction in early systemic antineutrophil cytoplasmic antibody-associated vasculitis. *Arthritis Rheum.* **64**, 3472-3477 (2012).
- 236 Jayne, D. *et al.* A randomized trial of maintenance therapy for vasculitis associated with antineutrophil cytoplasmic autoantibodies. *N. Eng. J. Med.* **349**, 36-44 (2003).
- 237 Pagnoux, C. *et al.* Azathioprine or methotrexate maintenance for ANCA-associated vasculitis. *N. Eng. J. Med.* **359**, 2790-2803 (2008).
- 238 Puechal, X. *et al.* Long-Term Outcomes Among Participants in the WEGENT Trial of Remission-Maintenance Therapy for Granulomatosis With Polyangiitis (Wegener's) or Microscopic Polyangiitis. *Arthritis Rheum.* **68**, 690-701 (2016).
- 239 Hiemstra, T. F. *et al.* Mycophenolate mofetil vs azathioprine for remission maintenance in antineutrophil cytoplasmic antibody-associated vasculitis: a randomized controlled trial. *JAMA* **304**, 2381-2388 (2010).
- 240 Terrier, B. *et al.* Long-term efficacy of remission-maintenance regimens for ANCA-associated vasculitides. *Ann. Rheum. Dis.* **77**, 1150-1156 (2018).

- 241 Etanercept plus standard therapy for Wegener's granulomatosis. *N. Eng. J. Med.* **352**,  
351-361 (2005).
- 242 Metzler, C. *et al.* Elevated relapse rate under oral methotrexate versus leflunomide for  
maintenance of remission in Wegener's granulomatosis. *Rheumatology* **46**, 1087-1091  
(2007).
- 243 Jayne, D. *et al.* Efficacy and Safety of Belimumab and Azathioprine for Maintenance  
of Remission in Antineutrophil Cytoplasmic Antibody-Associated Vasculitis: A  
Randomized Controlled Study. *Arthritis Rheum.* **71**, 952-963 (2019).
- 244 Stegeman, C. A., Tervaert, J. W., de Jong, P. E. & Kallenberg, C. G. Trimethoprim-  
sulfamethoxazole (co-trimoxazole) for the prevention of relapses of Wegener's  
granulomatosis. Dutch Co-Trimoxazole Wegener Study Group. *N. Eng. J. Med.* **335**,  
16-20 (1996).
- 245 Ribi, C. *et al.* Treatment of Churg-Strauss syndrome without poor-prognosis factors: a  
multicenter, prospective, randomized, open-label study of seventy-two patients.  
*Arthritis Rheum.* **58**, 586-594 (2008).
- 246 Puéchal, X. *et al.* Non-severe eosinophilic granulomatosis with polyangiitis: long-  
term outcomes after remission-induction trial. *Rheumatology* **58**, 2107-2116 (2019).
- 247 Guillevin, L. *et al.* Lack of superiority of steroids plus plasma exchange to steroids  
alone in the treatment of polyarteritis nodosa and Churg-Strauss syndrome. A  
prospective, randomized trial in 78 patients. *Arthritis Rheum.* **35**, 208-215 (1992).
- 248 Guillevin, L. *et al.* Corticosteroids plus pulse cyclophosphamide and plasma  
exchanges versus corticosteroids plus pulse cyclophosphamide alone in the treatment  
of polyarteritis nodosa and Churg-Strauss syndrome patients with factors predicting  
poor prognosis. A prospective, randomized trial in sixty-two patients. *Arthritis  
Rheum.* **38**, 1638-1645 (1995).
- 249 Ma, T. K., McAdoo, S. P. & Tam, F. W. Targeting the tyrosine kinase signalling  
pathways for treatment of immune-mediated glomerulonephritis: from bench to  
bedside and beyond. *Nephrol. Dial. Transplant.* **32**, i129-i138 (2017).
- 250 Langford, C. A. *et al.* An open-label trial of abatacept (CTLA4-IG) in non-severe  
relapsing granulomatosis with polyangiitis (Wegener's). *Ann. Rheum. Dis.* **73**, 1376-  
1379 (2014).
- 251 Holdsworth, S. R., Gan, P. Y. & Kitching, A. R. Biologics for the treatment of  
autoimmune renal diseases. *Nat. Rev. Nephrol.* **12**, 217-231 (2016).
- 252 Gan, P. Y. *et al.* Apoptotic Cell-Induced, Antigen-Specific Immunoregulation to Treat  
Experimental Antimyeloperoxidase GN. *J. Am. Soc. Nephrol.* **30**, 1365-1374 (2019).
- 253 Bunch, D. O. *et al.* Gleaning relapse risk from B cell phenotype: decreased CD5+ B  
cells portend a shorter time to relapse after B cell depletion in patients with ANCA-  
associated vasculitis. *Ann. Rheum. Dis.* **74**, 1784-1786 (2015).
- 254 Ormerod, A. S. & Cook, M. C. Epidemiology of primary systemic vasculitis in the  
Australian Capital Territory and south-eastern New South Wales. *Int. Med. J.* **38**, 816-  
823 (2008).
- 255 Anderson, K., Klassen, J., Stewart, S. A. & Taylor-Gjevre, R. M. Does geographic  
location affect incidence of ANCA-associated renal vasculitis in northern  
Saskatchewan, Canada? *Rheumatology* **52**, 1840-1844 (2013).

- 256 Reinhold-Keller, E., Herlyn, K., Wagner-Bastmeyer, R. & Gross, W. L. Stable incidence of primary systemic vasculitides over five years: results from the German vasculitis register. *Arthritis Rheum* **53**, 93-99 (2005).
- 257 Panagiotakis, S. H. *et al.* The epidemiology of primary systemic vasculitides involving small vessels in Crete (southern Greece): a comparison of older versus younger adult patients. *Clin. Exp. Rheumatol.* **27**, 409-415 (2009).
- 258 Fujimoto, S. *et al.* Comparison of the epidemiology of anti-neutrophil cytoplasmic antibody-associated vasculitis between Japan and the U.K. *Rheumatology (Oxford, England)* **50**, 1916-1920 (2011).
- 259 Dadoniene, J., Kirdaite, G., Mackiewicz, Z., Rimkevicius, A. & Haugeberg, G. Incidence of primary systemic vasculitides in Vilnius: a university hospital population based study. *Ann. Rheum. Dis.* **64**, 335-336 (2005).
- 260 Pamuk, O., Donmez, S. & Calayir, G. B. The Incidences of Anti-Neutrophil Cytoplasmic Antibody-Associated Vasculitis in Northeastern Part of Turkey. *Ann. Rheum. Dis.* **72**, 638-638 (2013).
- 261 Sánchez Torres A. *et al.* Epidemiología de las vasculitis sistémicas primarias en una población latino americana. *Reumatología*, 145-150 (2005).
- 262 Gonzalez-Gay, M. A., Garcia-Porrúa, C., Guerrero, J., Rodriguez-Ledo, P. & Llorca, J. The epidemiology of the primary systemic vasculitides in northwest Spain: implications of the Chapel Hill Consensus Conference definitions. *Arthritis Rheum.* **49**, 388-393 (2003).
- 263 Romero-Gomez, C. *et al.* Epidemiological study of primary systemic vasculitides among adults in southern Spain and review of the main epidemiological studies. *Clin. Exp. Rheumatol.* **33** Suppl 89, S-11-8 (2015).
- 264 Mohammad, A. J., Jacobsson, L. T., Westman, K. W., Sturfelt, G. & Segelmark, M. Incidence and survival rates in Wegener's granulomatosis, microscopic polyangiitis, Churg-Strauss syndrome and polyarteritis nodosa. *Rheumatology (Oxford, England)* **48**, 1560-1565 (2009).
- 265 Zeff AS. Schlesinger, M. K. H. Wegener's granulomatosis and environmental factors in Western Montana. *Rheumatol. Rep.* e8 (2010).
- 266 Neshar, G., Ben-Chetrit, E., Mazal, B. & Breuer, G. S. The Incidence of Primary Systemic Vasculitis in Jerusalem: A 20-year Hospital-based Retrospective Study. *J Rheumatol.* **43**, 1072-1077 (2016).
- 267 Damoiseaux, J. *et al.* An international survey on anti-neutrophil cytoplasmic antibodies (ANCA) testing in daily clinical practice. *Clin. Chem. Lab. Med.* **56**, 1759-1770 (2018).
- 268 Damoiseaux, J. *et al.* Detection of antineutrophil cytoplasmic antibodies (ANCAs): a multicentre European Vasculitis Study Group (EUVAS) evaluation of the value of indirect immunofluorescence (IIF) versus antigen-specific immunoassays. *Ann. Rheum. Dis.* **76**, 647-653 (2017).
- 269 Savige, J. *et al.* International Consensus Statement on Testing and Reporting of Antineutrophil Cytoplasmic Antibodies (ANCA). *Am. J. Clin. Pathol.* **111**, 507-513 (1999).

- 270 Weiner, M. & Segelmark, M. The clinical presentation and therapy of diseases related to anti-neutrophil cytoplasmic antibodies (ANCA). *Autoimmun. Rev.* **15**, 978-982 (2016).
- 271 Zhao, M. H. *et al.* Autoantibodies against bactericidal/permeability-increasing protein in patients with cystic fibrosis. *QJM* **89**, 259-265 (1996).
- 272 Choi, H. K., Lamprecht, P., Niles, J. L., Gross, W. L. & Merkel, P. A. Subacute bacterial endocarditis with positive cytoplasmic antineutrophil cytoplasmic antibodies and anti-proteinase 3 antibodies. *Arthritis Rheum.* **43**, 226-231 (2000).
- 273 Mahr, A. *et al.* Brief report: prevalence of antineutrophil cytoplasmic antibodies in infective endocarditis. *Arthritis Rheum.* **66**, 1672-1677 (2014).
- 274 Ying, C. M., Yao, D. T., Ding, H. H. & Yang, C. D. Infective endocarditis with antineutrophil cytoplasmic antibody: report of 13 cases and literature review. *PLoS One* **9**, e89777 (2014).
- 275 Chen, M., Gao, Y., Guo, X. H. & Zhao, M. H. Propylthiouracil-induced antineutrophil cytoplasmic antibody-associated vasculitis. *Nat. Rev. Nephrol.* **8**, 476-483 (2012).
- 276 Pendergraft, W. F. & Niles, J. L. Trojan horses: drug culprits associated with antineutrophil cytoplasmic autoantibody (ANCA) vasculitis. *Curr. Opin. Rheumatol.* **26**, 42-49 (2014).
- 277 Grau, R. G. Drug-Induced Vasculitis: New Insights and a Changing Lineup of Suspects. *Curr. Rheumatol. Rep.* **17**, 71 (2015).
- 278 Lee, E. *et al.* Inactivation of peroxidases of rat bone marrow by repeated administration of propylthiouracil is accompanied by a change in the heme structure. *Biochem. Pharmacol.* **37**, 2151-2153 (1988).
- 279 Nakazawa, D. *et al.* Abnormal conformation and impaired degradation of propylthiouracil-induced neutrophil extracellular traps: implications of disordered neutrophil extracellular traps in a rat model of myeloperoxidase antineutrophil cytoplasmic antibody-associated vasculitis. *Arthritis Rheum.* **64**, 3779-3787 (2012).
- 280 Lood, C. & Hughes, G. C. Neutrophil extracellular traps as a potential source of autoantigen in cocaine-associated autoimmunity. *Rheumatology* **56**, 638-643 (2017).