

 Open access • Journal Article • DOI:10.1063/1.119051

## **Anisotropic magnetic coupling of permalloy micron dots forming a square lattice**

— [Source link](#) 

C. Mathieu, C. Hartmann, M. Bauer, O. Buettner ...+12 more authors

**Published on:** 26 May 1997 - Applied Physics Letters (American Institute of Physics)

**Topics:** Magnetic anisotropy, Permalloy, Anisotropy, Paramagnetism and Magnetic nanoparticles

Related papers:

- [Magnetic anisotropies in dot arrays: Shape anisotropy versus coupling](#)
- [Lateral quantization of spin waves in micron size magnetic wires](#)
- [Magnetic wire and box arrays \(invited\)](#)
- [Brillouin light scattering from quantized spin waves in micron-size magnetic wires](#)
- [Brillouin light scattering investigations of structured permalloy films](#)

Share this paper:    

View more about this paper here: <https://typeset.io/papers/anisotropic-magnetic-coupling-of-permalloy-micron-dots-1bn4jukwbo>

# Anisotropic magnetic coupling of permalloy micron dots forming a square lattice

C. Mathieu, C. Hartmann, M. Bauer, O. Buettner, S. Riedling, B. Roos, S.O. Demokritov, and B. Hillebrands

*Universität Kaiserslautern, Erwin-Schrödinger-Str. 56, 67663 Kaiserslautern, Germany*

B. Bartenlian, and C. Chappert

*IEF, Université Paris Sud, 91405 Orsay, France*

D. Decanini, F. Rousseaux, and E. Cambri

*L2M, Bagneux, France*

A. Müller, B. Hoffmann, and U. Hartmann

*Universität Saarbrücken, Germany*

Static magnetic and spin wave properties of square lattices of permalloy micron dots with thicknesses of 500 Å and 1000 Å and with varying dot separations have been investigated. A magnetic fourfold anisotropy was found for the lattice with dot diameters of 1 μm and a dot separation of 0.1 μm. The anisotropy is attributed to an anisotropic dipole-dipole interaction between magnetically unsaturated parts of the dots. The anisotropy strength (order of 10<sup>5</sup> erg/cm<sup>3</sup>) decreases with increasing in-plane applied magnetic field.

The physical properties of magnetic particles on the micro- and nanometer scale have attracted much interest in the last few years especially because of the promising prospects in future data storage and sensor applications [1-4]. One of the many unsolved problems is the origin and strength of magnetic interaction between the particles as a function of parameters like the dot separation and the aspect ratio (diameter to height ratio). In this Letter we report on first observations of an anisotropic in-plane coupling between magnetic dots arranged in a square lattice, which is correlated to inherent inhomogeneities of the dot magnetizations.

Well separated dots of circular shape made of polycrystalline permalloy (Ni<sub>80</sub>Fe<sub>20</sub>) will not exhibit any in-plane anisotropy. For dots with small enough separation any observed in-plane anisotropy is therefore a fingerprint for a magnetic coupling between the dots. Measurements of coupling induced anisotropies allow for a quantitative study of magnetic interdot coupling.

The method of choice is Brillouin light scattering (BLS) from dipolar dominated spin wave modes (Damon-Eshbach modes) propagating within the dots [5]. The spin wave frequencies depend on the demagnetization factor of each dot, on the value and distribution of the magnetization vector, on anisotropies, and to a weak degree on the volume exchange constant. A study of the mode dispersion and of the dependence on the in-plane direction of the external field allows to determine the interdot coupling strength.

We have studied regular square lattices of circular shaped dots of permalloy of 1 μm and 2 μm diameter and 500 Å and 1000 Å thickness. The films were prepared in ultrahigh vacuum onto Si/SiO<sub>2</sub> 10x10 mm<sup>2</sup> substrates using an e<sup>-</sup>-beam evaporator. The samples were patterned by synchrotron radiation based X-ray lithography

performed at the L2M synchrotron station at the super ACO storage at LURE, Orsay, using ion beam etching to transfer the patterns into the permalloy films. A subtractive process was used as described elsewhere [7]. Each sample consists of circular dots arranged in a 1x1 mm<sup>2</sup> square lattice with a diameter/periodicity of 1/1.1, 1/2, 2/2.2 and 2/4 μm, respectively. For comparison, and in order to check for modifications of the magnetic bulk properties during the patterning process, the remaining parts of the samples were not patterned, i.e. consist of a continuous film. Depth profile measurements show that the etching process cuts 200 Å deep into the substrate between the dots, which guarantees that Ni<sub>80</sub>Fe<sub>20</sub> bridges between the dots do not exist.

The Brillouin light scattering experiments were performed in backscattering geometry using a multipass tandem Fabry-Perot interferometer with the in-plane momentum transfer perpendicular to the applied magnetic field. Ar<sup>+</sup>-ion laser light with an incident power of at most 100 mW and an angle of incidence of 45° degrees was focused onto the sample with a focus diameter of about 40 μm. The spin wave frequencies were detected as a function of the strength, H, and the angle, Φ<sub>H</sub>, of the in-plane applied magnetic field.

In addition the magnetization reversal behavior as well as the zero field domain structure have been investigated using Kerr magnetometry and magnetic force microscopy. Kerr loops have been measured as a function of the angle Φ<sub>H</sub> of the in-plane applied field. The focus diameter of the probing laser light was below 0.3 mm to ensure alignment within the patterned area. Magnetic force microscope images have been made at zero applied field using a Co coated Si-cantilever at a sample distance between 10 and 100 nm at a vibration frequency of 69.62 kHz. The spatial resolution is below 100 nm.

A detailed BLS study of the dependence of the spin wave properties on the applied magnetic field has been performed. All Brillouin light scattering spectra display clearly the Damon-Eshbach mode. For each structure the spin wave frequencies decrease linearly with decreasing field, and they disappear below certain critical applied fields. The most striking effect is the strong reduction of the spin wave frequencies with decreasing aspect ratio. This is caused by size depending demagnetizing fields as follows: With negligible small anisotropies [7], as obtained for the permalloy film, the frequency of the Damon-Eshbach mode can be expressed as [5]

$$v = \gamma \cdot \left[ H_i \cdot (H_i + 4\pi M_s) + (2\pi M_s)^2 \cdot (1 - e^{-2q_{\parallel}d}) \right]^{1/2} \quad (1)$$

with  $\gamma$  the gyromagnetic ratio,  $4\pi M_s$  the saturation magnetization,  $q_{\parallel}$  the in-plane wave vector, and  $d$  the dot thickness.  $H_i$  is the internal field, which is here defined as

$$H_i = H - H_d = H - N \cdot 4\pi M_s \quad (2)$$

with  $N$  the demagnetizing factor of the magnetic dots and  $H_d$  the demagnetizing field. Eq. (1) presumes a saturation of in-plane magnetization of the dots. Spin wave frequencies obtained from Eq. (1) using demagnetizing factors of spheroids with axes ratios of the magnetic dots are in reasonable good agreement with the experimental data for frequency values above 14.5 GHz.

To clarify the problem of an in-plane interdot coupling, we measured the spin wave frequencies of the Damon-Eshbach mode as a function of the angle of the in-plane applied field,  $\Phi_H$ , with respect to a reference [10]-direction of the lattice. Only for the smallest dot separations of 0.1  $\mu\text{m}$  a fourfold anisotropic behavior is found. This is displayed in Fig. 1 for the 1/1.1  $\mu\text{m}$  and, for comparison, for the 1/2  $\mu\text{m}$  lattices of the sample of 1000  $\text{\AA}$  thickness at an applied field of 1 kOe.

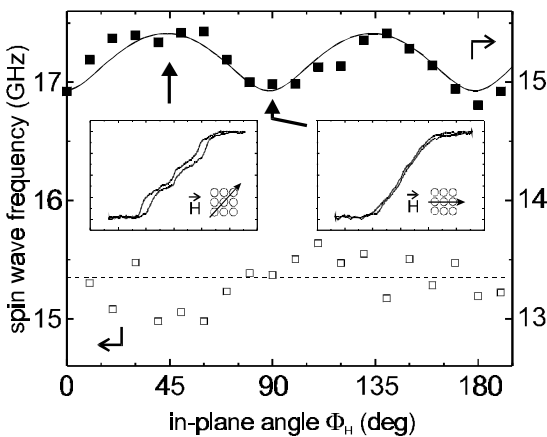


Fig. 1 Dependence of the spin wave frequencies on the in-plane direction of the applied field for the 1/1.1  $\mu\text{m}$  and, for comparison, for the 1/2  $\mu\text{m}$  dot lattices of 500  $\text{\AA}$  thickness. The solid line is a fit for the data (see text). Kerr hysteresis loops of the 1/1.1  $\mu\text{m}$  dot lattice are shown as insets with the applied field as indicated. Note the complicated magnetization reversal behavior of the 1/1.1  $\mu\text{m}$  dot lattice for a field direction of 45°.

To determine quantitatively the anisotropy constant we use the energy expression

$$F = K^{(4)} \sin^2 \Phi \cdot \cos^2 \Phi \quad (3)$$

with  $\Phi$  the angle between the direction of magnetization with respect to the [10]-direction, and  $K^{(4)}$  a fourfold in-plane anisotropy constant. A model fit using Eq. (3) and a numerical procedure to calculate the spinwave frequencies [8] is displayed in Fig. 1 as a solid line for the 1/1.1  $\mu\text{m}$  lattice. For both 1/1.1  $\mu\text{m}$  samples with thicknesses of 500  $\text{\AA}$  and 1000  $\text{\AA}$  the anisotropy contribution  $K^{(4)}$  was determined for several values of the applied magnetic field strength,  $H$ . The obtained results for  $K^{(4)}$  are displayed for both thicknesses in Fig. 2 as a function of the reduced field  $H/H_d$ .  $K^{(4)}$  decreases with increasing reduced field and saturates within the investigated field range at  $K^{(4)} = -0.6 \cdot 10^5 \text{ erg/cm}^3$ , which corresponds to an effective anisotropy field  $H_{\text{ani}} = 150 \text{ Oe}$ , at the same reduced field value of about  $H/H_d = 5$ . The data of both dot thicknesses fall onto one common curve within the error margins indicating that the coupling strength scales with the demagnetizing field.

The origin of this fourfold anisotropy can be understood as follows. Because of the large distance of 0.1  $\mu\text{m}$  between the dots a direct exchange mechanism via conduction electrons or via electron tunneling can be excluded. The quasi-uniform demagnetization field, caused by the shape of the patterned area (1x1  $\text{mm}^2$  square) can not be responsible for the observed anisotropy. In fact, the film thickness/square length ratio is of the order of  $10^{-4}$ . It corresponds to a demagnetizing field of about 1 Oe, which is much smaller than the observed value of 150 Oe. Moreover, since the quasi-uniform field strength should depend on the average magnetization of the lattice, the effect should be the same for 1/1.1  $\mu\text{m}$  and the 2/2.2  $\mu\text{m}$  lattices, which is not the case.

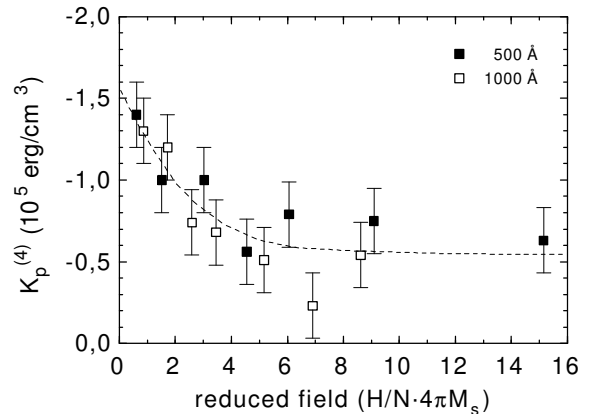


Fig. 2 Fourfold anisotropy constant,  $K^{(4)}$ , for the 1/1.1  $\mu\text{m}$  lattices of 500  $\text{\AA}$  and 1000  $\text{\AA}$  thickness as a function of the reduced field ( $H/N \cdot 4\pi M_s$ ). The dashed line serves as a guide to the eyes.

A dipolar interaction of completely magnetized dots also cannot account for the observed anisotropy, because the corresponding dipolar energy can be expressed as a bilinear form of the components of the magnetization vector. Such an expression can only yield an uniaxial

anisotropy contribution, since in a bilinear form the direction cosines appear quadratic in highest order. Therefore we propose that the fourfold anisotropy contribution is caused by a dipole-dipole interaction between residual unsaturated parts of the dots, because in this case the energy cannot be expressed as a bilinear form. The large observed decrease of the coupling anisotropy constant with increasing field as well as the scaling of the anisotropy with the reduced field corroborates this assumption. The anisotropic coupling is still observed for field values larger than the demagnetizing field,  $H_d$ . However, due to the non-ellipsoidal form of the dots and due to surface magnetic anisotropies acting on the dot boundaries, which cannot be characterized in more detail in the present study, it is likely that the non-saturated parts can persist up to fairly high fields.

To study more precisely the static magnetization behavior Kerr measurements were carried out. Only for the lattices with the smallest dot separation of  $0.1 \mu\text{m}$  a fourfold in-plane anisotropy in the loop shapes is found. For comparison Kerr loops of the  $1/1.1 \mu\text{m}$  lattice of  $1000 \text{ \AA}$  thickness are shown as insets in Fig. 1, with the magnetic field,  $H$ , applied along the  $[10]$ - and the  $[11]$ -direction. In comparison, the loop shape of the  $1/1.1 \mu\text{m}$  lattice along the  $[10]$ -direction is very similar to the loop shapes of the  $1/2 \mu\text{m}$  lattices for all field directions. In contrary the loop shape of the  $1/1.1 \mu\text{m}$  lattice with  $H$  along the  $[11]$ -direction, i.e. the easy direction of  $K^{(4)}$  as determined by BLS, is rather complex. Similar loop shapes have been obtained by Smyth et al. as a function of the interdot separation but the magnetization reversal process is not yet understood [1,3]. Since these loop shapes exhibit a higher zero-field susceptibility, they also indicate that the  $[11]$ -direction is the easy axis. Another result is that the saturation field  $H_s$  decreases with decreasing dot separation, which can be well understood as a result of an increasing film coverage. For the  $1/1.1 \mu\text{m}$  and the  $1/2 \mu\text{m}$  lattices the values of  $H_s$  are  $(620 \pm 50) \text{ Oe}$  and  $(780 \pm 50) \text{ Oe}$ , respectively. This result is qualitatively in agreement with the BLS data, showing the spin wave frequencies of the  $1/1.1 \mu\text{m}$  lattice lying slightly above the frequencies of the  $1/2 \mu\text{m}$  indicating smaller demagnetizing fields for the sample with lower spacings. A direct proof of a coupling of stray fields due to the presence of a common magnetic substructure of the dots is yielded by magnetic force microscopy (MFM). The measurements were performed at zero applied field. MFM-images of the  $1/1.1 \mu\text{m}$  and the  $1/2 \mu\text{m}$  lattices of  $500 \text{ \AA}$  thickness are shown in Fig. 3. For both lattices a heterogeneous magnetic structure is clearly recognizable, which seems to be totally disordered for the large separation of  $1 \mu\text{m}$ . For the  $1/1.1 \mu\text{m}$  lattice a regular pattern of the domain walls can be seen, which are aligned crosslike along the  $[10]$ -direction. This is evidence for a separation dependent dipolar coupling of the domains, which is only effective for separations of the order of  $0.1 \mu\text{m}$ .

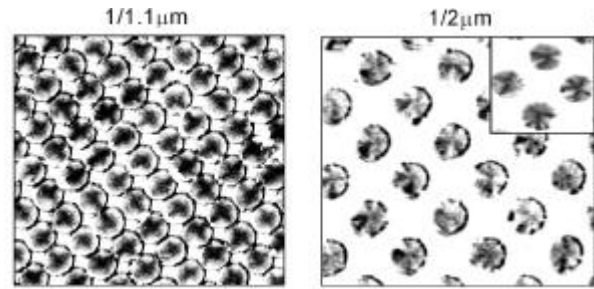


Fig. 3 MFM images of the  $1/1.1 \mu\text{m}$  and  $1/2 \mu\text{m}$  samples of  $500 \text{ \AA}$  dot thickness. Note the crosslike order of domain walls along the  $[10]$ -direction for the  $1/1.1 \mu\text{m}$  lattice in contrary to the irregular orientation of the  $1/2 \mu\text{m}$  lattice. For clarity an inset with a better resolution is shown for the  $1/2 \mu\text{m}$  sample.

In summary we have found clear evidence for an in-plane anisotropic coupling of magnetic micron dots, most probably mediated by stray fields of non-saturated parts of the dots. The anisotropy strength is of the order of  $10^5 \text{ erg/cm}^3$ . Since the coupling has been found only for the smallest dot separation of  $0.1 \mu\text{m}$  investigations of further reduced dot separations are required.

Support by the Deutsche Forschungsgemeinschaft is gratefully acknowledged.

- [1] J.F. Smyth, S. Schultz, D. Kern, H. Schmidt, D. Yee, *J. Appl. Phys.* **63**, 4237 (1988).
- [2] B.A. Gurney, P. Baumgart, V. Speriosu, R. Fontana, A. Patlac, T. Logan, P. Humbert, Digest of the International Conference on Magnetic Films and Surfaces, Glasgow, (1991).
- [3] J.F. Smyth, S. Schultz, D.R. Fredkin, D.P. Kern, S.A. Rishton, H. Schmid, M. Cali, T.R. Koehler, *J. Appl. Phys.* **69**, 5262 (1991).
- [4] A. Maeda, M. Kume, T. Ogura, K. Kukori, T. Yamada, M. Nishikawa, Y. Harada, *J. Appl. Phys.* **76**, 6667 (1994).
- [5] R.W. Damon, J.R. Eshbach, *J. Phys. Chem. Solids* **19**, 308 (1961).
- [6] F. Rousseaux, D. Decanini, F. Carcenac, E. Cambriil, M.F. Ravet, C. Chappert, N. Bardou, B. Bartenlian, P. Veillet, *J. Vac. Technol. B* **13**, 2787 (1995).
- [7] Equations (1, 2) describe in good approximation the observed gross feature of the shape effects also in presence of anisotropies, since the anisotropy contributions are small.
- [8] B. Hillebrands, *Phys. Rev. B* **44**, 530 (1990)