


ORIGINAL RESEARCH

Open Access



Anti-domain 1 β 2 glycoprotein antibodies increase expression of tissue factor on monocytes and activate NK Cells and CD8+ cells in vitro

Gayane Manukyan^{1,2*} , Anush Martirosyan¹, Ludek Slavik³, Sona Margaryan^{1,2}, Jana Ulehlova³, Zuzana Mikulkova², Antonin Hlusi³, Tomas Papajik³ and Eva Kriegova²

Abstract

Background: β 2-Glycoprotein I (β 2GPI) represents the major antigenic target for antiphospholipid antibodies (aPL), with domain 1 (D1) being identified as a risk factor for thrombosis and pregnancy complications in APS. We aimed to analyse the ability of aPL, and particularly anti-D1 β 2GPI, to stimulate prothrombotic and proinflammatory activity of immune cells in vitro.

Methods: Peripheral blood mononuclear cells (PBMCs) from 11 healthy individuals were incubated with: (1) “anti-D1(+)”—pooled plasma derived from patients suspected of having APS contained anticardiolipin antibodies (aCL), lupus anticoagulant (LA), anti- β 2GPI and anti-D1 β 2GPI; (2) “anti-D1(—)” —pooled plasma from patients suspected of having APS contained aCL, LA, anti- β 2GPI, and negative for anti-D1 β 2GPI; (3) “seronegative”—negative for aPL.

Results: The presence of anti-D1(+) and anti-D1(—) plasma resulted in increased HLA-DR and CD11b on monocytes. While only anti-D1(+) plasma markedly increased the percentage and median fluorescence intensity (MFI) of CD142 (tissue factor, TF) on monocytes in comparison with those cultured with anti-D1(—) and seronegative plasma. Anti-D1(+) plasma resulted in increased percentage and MFI of activation marker CD69 on NK and T cytotoxic cells. Expression of IgG receptor Fc γ RIII(CD16) on monocytes and NK cells was down-regulated by the anti-D1(+) plasma.

Conclusions: Taking together, our study shows the ability of patient-derived aPL to induce immune cell activation and TF expression on monocytes. For the first time, we demonstrated the influence of anti-D1 β 2GPI on the activation status of monocytes, NK and cytotoxic T cells. Our findings further support a crucial role of D1 epitope in the promotion of thrombosis and obstetrical complications in APS.

Keywords: Antiphospholipid antibodies, Anti-domain 1 β 2GPI, Plasma pool, Primary immune cells, Monocytes, NK cells, Neutrophils, B cells, T cells

Background

Antiphospholipid antibodies (aPL) is a heterogeneous family of autoantibodies directed primarily toward phospholipid binding proteins or single plasma proteins [1]. Among a wide variety of known aPL, the clinical significance of anticardiolipin (aCL), anti- β 2-glycoprotein I (anti- β 2GPI) and lupus anticoagulant (LA) is well established [2]. Transient generation of aPL may be

*Correspondence: gaya.manukyan@gmail.com; g_manukyan@mb.sci.am
¹ Laboratory of Molecular and Cellular Immunology, Institute of Molecular Biology NAS RA, 7 Hasratyan St., 0014 Yerevan, Armenia
Full list of author information is available at the end of the article



associated with various pathological conditions such as systemic lupus erythematosus (SLE), rheumatoid arthritis, Sjögren's syndrome, infectious diseases, neurological or cardiac complications, and even in 1–5% of general healthy population [1]. The continuous presence of “classical” aPL, specifically anti- β 2GPI, aCL and LA, is a hallmark of the antiphospholipid syndrome (APS), that is the most common cause of acquired thrombophilia, associated with venous and/or arterial thrombosis and pregnancy complications [3]. Numerous epidemiological, clinical, and experimental evidences suggested a positive association between aPL and thrombotic complications in APS patients [4]. In particular, LA and anti- β 2GPI are commonly recognised as strong risk factors for thromboembolic events [5].

There are multiple mechanisms on how aPL may catalyse clotting reactions including direct interaction with proteins involved in the initiation and control of blood coagulation, namely β 2-GPI, prothrombin, protein C and S, annexin V, factor XII, etc. [6]. Activation of endothelial and immune cells by aPL that have a strong binding ability to cellular membranes is another important thrombogenic mechanism [7]. β 2GPI/anti- β 2GPI complexes on monocytes activate p38 MAPK and ERK1/2 signalling pathways which result in NF- κ B translocation and expression of proinflammatory and prothrombotic molecules, particularly tissue factor (TF) [7]. There is a growing body of evidence supporting the key role of aPL-mediated expression of TF on monocytes for a hypercoagulable state in APS [6].

While significant progress has been made toward understanding the pathogenic mechanisms that underlie prothrombotic potential of aPL, an enigma is that only certain aPL-positive individuals develop clinical events [8]. Estimated incidence of aPL among SLE patients range from 11 to 86%, and may be as high as 94% in patients with human immunodeficiency virus (HIV) or chronic hepatitis C virus (HCV) infected patients. Despite this, the occurrence of thromboembolic events in these patients is uncommon [9–11]. In recent years, it has been suggested that aPL titers, isotype distribution, single/double/triple positivity, “autoimmune” and “post-infectious” origin may influence over the ultimate outcome [12, 13]. Therefore, a clear understanding of the heterogeneity within the aPL population is required to establish prospective prediction markers that can be applied to stratify patients as having a low or high probability of thrombotic episodes or other clinical complications.

Central pathogenic importance of antibodies against β 2GPI, an abundant plasma glycoprotein composed of five domains, is generally recognised. Evidences suggested that target location may widely determine the pathogenic potential of anti- β 2GPI antibodies. In

particular, antibodies recognising domain IV/V have been more frequently detected in non-thrombotic autoimmune conditions, whereas anti- β 2GPI domain 1 (anti-D1) antibodies are preferentially associated with an increased risk of thrombosis and obstetrical complications [14, 15]. It was proposed that the dimeric form of β 2GPI, which has an even greater affinity for anionic phospholipids, is generated when β 2GPI is recognised by anti-D1 antibodies [16]. Dimerised complex may then compete with annexin A5, disrupting the protective anti-coagulant shield and potentially favouring thrombosis [16]. The anti-D1 β 2GPI-mediated effects have been proposed on the basis of epidemiological and clinical data, and the direct pathogenicity of this epitope on immune cells has not been studied yet [17, 18]. In the current study, we aimed therefore to analyse the ability of aPL, and particularly anti-D1 β 2GPI, to influence the phenotype and activation status of peripheral blood monocytes, NK cells, T and B cells in vitro.

Methods

Plasma samples

Plasma samples were received from the Department of Hemato-oncology (Faculty Hospital, Czech Republic) after laboratory screening for aPL positivity (triple positive) in patients suspected of having APS. All plasma samples were collected using sodium citrate as an anticoagulant. Plasma samples were divided into three groups according to the aPL status: (1) “anti-D1(+)”—plasma contained aCL, LA, anti- β 2GPI and anti-D1 β 2GPI; (2) “anti-D1(–)” —plasma contained aCL, LA, anti- β 2GPI and negative for anti-D1 β 2GPI; (3) “seronegative”—plasma negative for aPL. Pooled plasma was aliquoted and stored at $-80\text{ }^{\circ}\text{C}$ until use. aCL and β 2GPI, including DI anti- β 2GPI antibodies, were measured by CLIA kits (Werfen, Barcelona, Spain) as previously reported [19]. The detailed characterisation of the patients is presented in Table 1. The study was approved by the ethics committee of University Hospital and Palacky University Olomouc. Informed consent was obtained from all participants included in this study.

Culturing of peripheral blood mononuclear cells (PBMC) in the presence of aPL positive or negative plasma

As a source of primary cells, human PBMCs from healthy donors were isolated. 5 ml of venous blood samples from 11 healthy female volunteers (median age 35 years; range 26–50 years) with no history of APS or thrombotic events in their family history were collected into EDTA-coated tubes after completing a questionnaire regarding their health status. PBMCs were isolated from whole blood by the standard Histopaque-1077 (Sigma-Aldrich) density gradient centrifugation method. Cell viability,

Table 1 A detailed demographic and clinical profile of plasma donors

	Group 1 Anti-D1(+)	Group 2 Anti-D1(-)	Group 3 Seronegative
Number of subjects	6	6	6
Female/Male	6/0	5/1	6/0
Age (years)	35.8 (16–82)	57.8 (27–76)	41.1 (30–50)
Clinical records	1/6-SLE 4/5-thrombotic events 1/6-thrombocytopenia	1/6-SLE 5/6-thrombotic events	–
LA (number of positive patients)	5/6	3/6	0/6
aCL (IgG) (U/ml)	267.6 ± 399.1*	61.10 ± 30.51	< 20
aCL (IgM) (U/ml)	67.17 ± 25.84	277.4 ± 263.2	< 20
Anti-β2GPI (IgG) (U/ml)	257.0 ± 220.8	167.9 ± 118.3	< 20
Anti-β2GPI (IgM) (U/ml)	73.83 ± 48.06	243.9 ± 173.7	< 20
Anti-D1 β2GPI (CU/ml)	106.8 ± 159.7	< 20	< 20

* aPL titers presented as mean ± SD

as assessed by a trypan blue exclusion test and flow cytometry, was >98% for each sample. Freshly isolated cells were cultured at 2×10^6 /ml in RPMI-1640 medium (Sigma-Aldrich) supplemented with 2 mM L-Glutamine, 100 U/ml penicillin and 100 µg/ml streptomycin in sterile polypropylene round-bottom tubes (to reduce monocyte adherence) in the presence of 25% pooled plasma for all three groups separately for 24 h at 37 °C in 5% CO₂.

Flow cytometry analysis

Following a cultivation period, PBMCs were harvested by vigorous pipetting with ice-cold PBS, centrifuged at 400×g for 10 min, and washed twice with PBS. Afterwards, the cells were aliquoted and were labelled with the following specific fluorochrome-conjugated monoclonal antibodies: anti-CD27-FITC (clone M-T271), anti-HLA-DR-FITC (L243), anti-CD16/56-PE antibody cocktail (UCHT1/3G8 + MEM-188), anti-CD16-PE (3G8), anti-CD24-PE (ML5), anti-CD4-PerCP-Cy5.5 (SK3), anti-CD11b-PerCP-Cy5.5 (ICRF44), anti-CD80-PerCP-Cy5.5 (2D10), CD8-PE/Cy7 (SK1), anti-CD38-PE/Cy7 (HB-7), anti-HLA-G-PE/Cy7 (87G), anti-CD49d-APC (9F10), anti-CD69-APC (FN50), anti-CD142-APC (NY2), anti-CD19-APC-Cy7 (SJ25C1), anti-CD14-APC-Cy7 (HCD14), all BioLegend. Isotype matched FITC, PE, PerCP-Cy5.5, Pe-Cy7, APC and APC-Cy-7-conjugated irrelevant antibodies (BioLegend) were used as negative controls.

Antigen expression was analysed on Novocyte, ACEA Biosciences flow cytometer. Data acquisition was performed using ACEA Novo Express software. Flow cytometry data were analysed using the FlowJo vX0.7 software (Tree Star, Inc, San Carlos, CA). For each experiment, a minimum of 20,000 events of a gated cell population was counted. The main cell populations were identified using

a sequential gating strategy after the exclusion of doublets. T helper lymphocytes (CD3⁺/CD4⁺), T cytotoxic lymphocytes (CD3⁺/CD8⁺), NK cells (CD3⁻/CD16⁺/CD56⁺), B lymphocytes (CD19⁺), monocytes (CD14⁺). 7AAD and PI exclusion stains were used for evaluating cell viability. Results are expressed as the percentage and median fluorescence intensity (MFI) of the cells for each examined marker.

Statistical analysis

Data analysis was performed with GraphPad Prism 5.01 (GraphPad Software, USA). All values are given as means ± standard errors of the means. Normal distribution was checked with Shapiro–Wilk's W test. Data was analysed by the Friedman test and differences between groups were determined by the Dunn post hoc test. The significance was defined at the level of $P < 0.05$.

Results

To address the main question of the study and to define cellular responses in response to aPL, we developed an in vitro model which allowed analysing the influence of patient-derived aPL on the phenotype and activation status of monocytes, NK cells, T and B cells. For this, we cultivated PBMCs from healthy individuals with pooled plasma from 3 studied groups separately: anti-D1(+), anti-D1(-), and seronegative, and analysed by flow cytometry as previously described [20].

Anti-D1 β2GPI induces TF expression on monocytes

Monocytes were initially gated based on size, granularity, and CD14. First, we analysed the expression of thromboplastin CD142 (tissue factor, TF), a multifunctional protein which enables thrombin formation [6]. The percentage and MFI of CD142 were increased on monocytes

treated with anti-D1(+) compared to the cells cultured with anti-D1(-) ($P < 0.01$ and $P < 0.05$, respectively) and seronegative ($P < 0.001$ and $P < 0.001$, respectively) plasma (Fig. 1).

aPL mediate activation of monocytes and NK cells

Next, we showed that the cultivation of PBMCs with both anti-D1(+) and anti-D1(-) plasma resulted in a marked activation of monocytes as defined by the increased expression levels of CD11b ($P < 0.05$ and $P < 0.001$, respectively) and the increased % of CD11b+ monocytes ($P < 0.05$ and $P < 0.001$, respectively) compared with the monocytes cultured with seronegative plasma. Similarly, the expression of HLA-DR was increased in the anti-D1(+) and anti-D1(-) groups compared to the seronegative one ($P < 0.001$ and $P < 0.05$, respectively) (Fig. 1). The exposure of the cells with aPL did not induce significant differences in the expression levels of HLA-G on monocytes (data not shown).

Anti-D1(+) plasma resulted in the prominent activation of NK cells. Namely, the percentage and MFI of activation marker CD69 were increased in the anti-D1(+) group in comparison with anti-D1(-) ($P < 0.01$ and $P < 0.01$, respectively) and seronegative ($P < 0.01$ and $P < 0.01$, respectively) plasma. The percentage of HLA-G+ NK cells was increased in anti-D1(+) ($P < 0.01$) and anti-D1(-) ($P < 0.01$) groups comparing seronegative plasma without affecting expression intensity (Fig. 2a).

Anti-D1 β 2GPI substantially reduce phenotype-specific markers CD16 and CD56 on NK cells

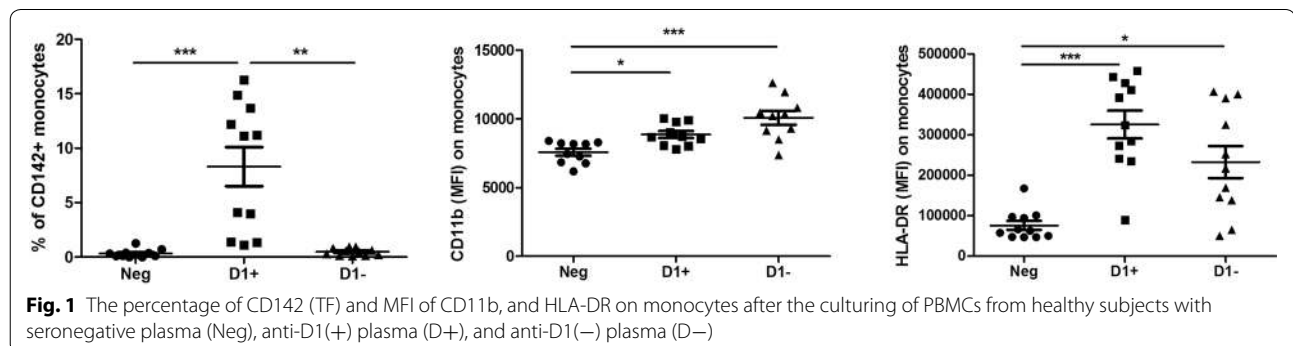
As shown in Fig. 2b, a substantial proportion of NK cells treated with anti-D1(+) showed down-regulation of both phenotype-specific markers, CD16 (Fc γ RIIIA) and CD56 in comparison with anti-D1(-) ($P < 0.001$) and seronegative ($P < 0.05$) groups. It is known that IgG can induce NK and monocyte cell-mediated complement-dependent cytotoxicity (CDC), antibody-dependent cell-mediated cytotoxicity (ADCC) and apoptosis in vivo [21]. To verify whether anti-D1(+) caused a cytotoxic effect mediated

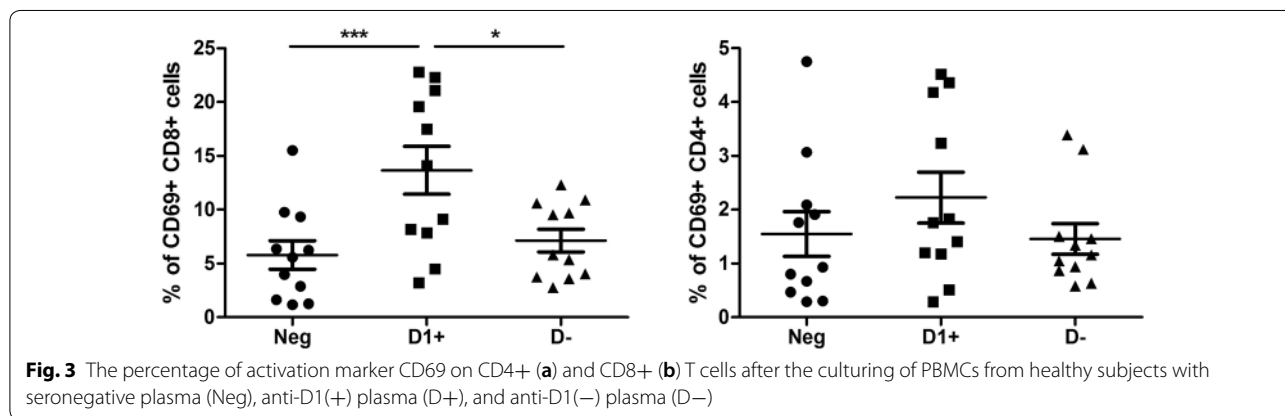
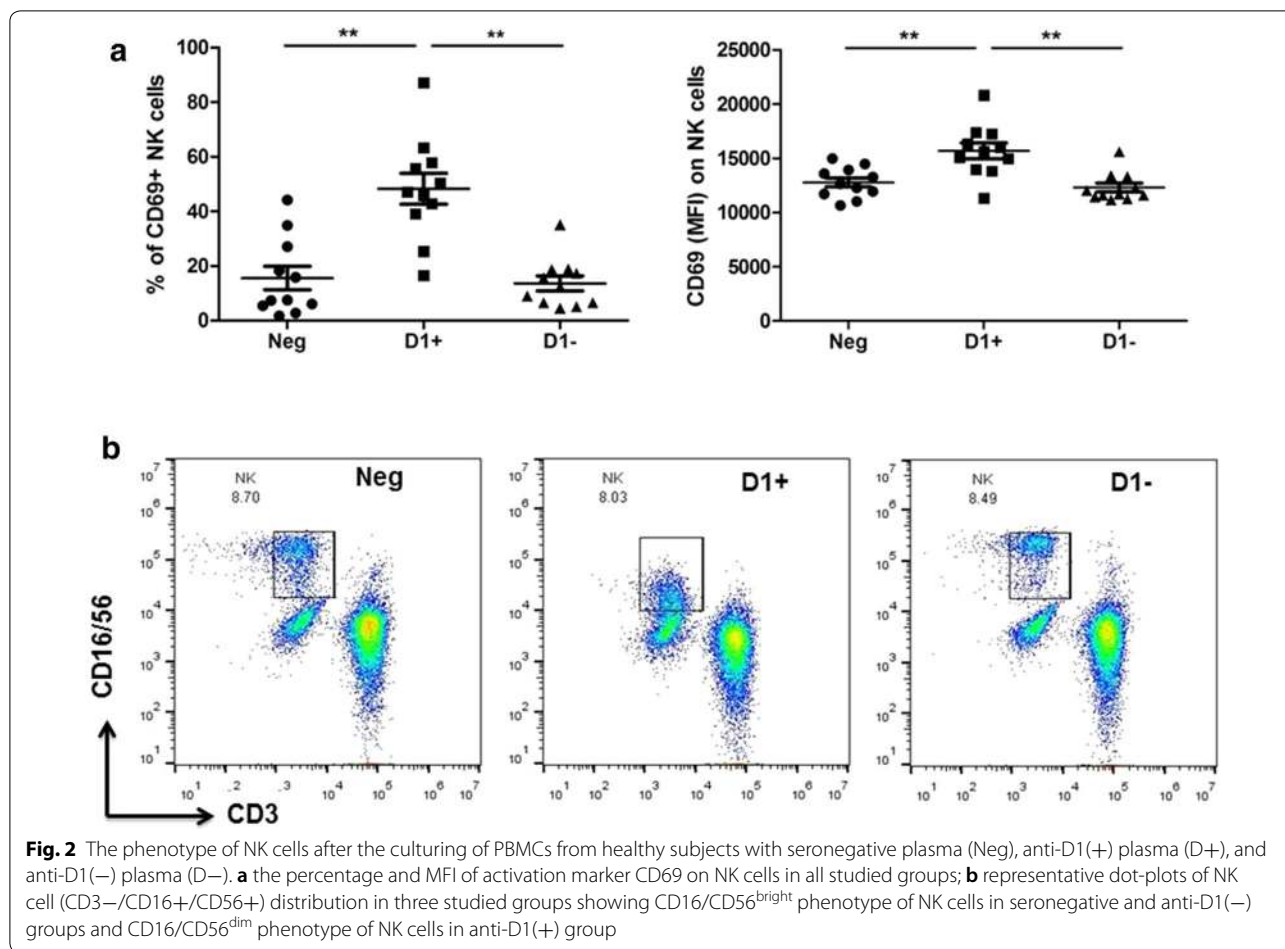
by the antibodies, we have analysed, in parallel, the viability of the treated cells. The number of non-viable cells was comparable to those of the cells treated with anti-D1(-) and seronegative plasma (data not shown).

Similar results were observed on monocytes. Particularly, the percentage of monocytes cultured with anti-D1(+) bearing CD16 was tended to be reduced compared to the anti-D1(-) and seronegative groups. In contrast, in the group of anti-D1(-), the percentage of CD16 was increased compared to both anti-D1(+) ($P < 0.001$) and seronegative ($P < 0.01$) groups. Due to the difficulties in defining monocyte subsets after cultivation, we were not able to delineate and analyse monocyte subsets. Despite these difficulties there were apparent differences in the distribution of monocyte subsets (CD14/CD16) in the samples cultured with anti-D1(+) and anti-D1(-) (data not shown). The differences in monocyte phenotypes after culturing with plasma containing aPL deserves further experiments.

Anti-D1 β 2GPI activate T cytotoxic cells and suppress B cells

CD4+ (T helper) cells were not affected by any combination of aPL (Fig. 3a). However, CD8+ (T cytotoxic) cells showed a marked increase in the number of CD8+ cells bearing activation marker CD69 in the presence of anti-D1 (+) as compared to the anti-D1(-) ($P < 0.05$) and seronegative ($P < 0.001$) groups. Similarly, CD69 MFI was up-regulated on CD8+ cells in the presence of anti-D1(+) as compared to the anti-D1(-) ($P < 0.01$) and seronegative ($P < 0.001$) groups (Fig. 3b). As a confirmation of the previous studies, we report here that CD4+ and CD8+ T cells express HLA-G at low levels [22]. However, significant changes in the presence of aPL were not observed. In contrast to CD8+ cells, cultivation with anti-D1 (+) resulted in a decreased number of B-cells bearing CD24 ($P < 0.01$), CD27 ($P < 0.05$), and CD80 ($P < 0.05$) as compared to the seronegative one. Cultivation of the cells with anti-D1(-) resulted only in the increased % of CD49d+ ($P < 0.05$) and CD38+ ($P < 0.05$)

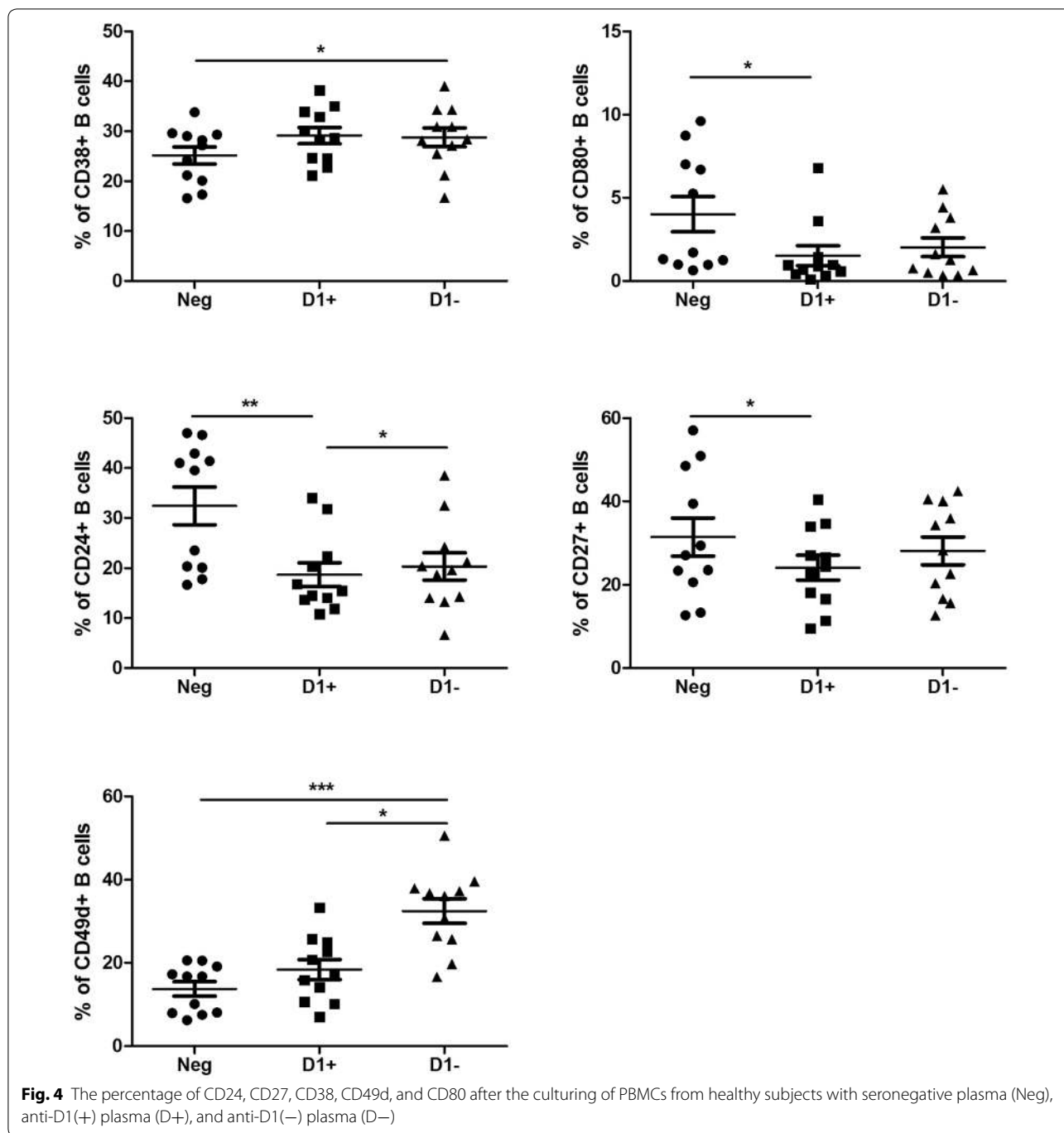




B cells as compared to the seronegative group. When the studied B cell markers were compared between anti-D1(+) and anti-D1(-) groups, we observed an increased percentage of CD49d ($P < 0.05$) and CD24 ($P < 0.05$) positive cells in the anti-D1(-) group (Fig. 4).

Discussion

Although it is believed that anti-D1 β 2GPI antibodies play a role in APS, their biological and pathogenic functions are largely unknown. Our study primarily focused on the evaluation of the effects of patient-derived plasma containing aPL, and particularly anti-D1 β 2GPI, on activation status of circulating immune cells in vitro. We, for



the first time, demonstrated marked activation of monocytes, NK and CD8+ cells in the presence of anti-D1 β 2GPI autoantibodies.

In this study, aPL modulated the host immune response, executing pro-inflammatory effects on monocytes as assessed by the increased expression of CD11b and HLA-DR. Despite marked activation of the monocytes caused by the aPL, only anti-D1 β 2GPI antibodies

induced procoagulant activity of monocytes as assessed by the increased expression of TF on monocytes. Our results confirm the data obtained in epidemiological and clinical studies showing an association of anti-D1 β 2GPI with late pregnancy morbidity and thrombosis in APS [23, 24]. The presence of thromboembolic complications is indispensable for the diagnosis of APS [25]. The hypercoagulable state in APS is markedly different from

other known hypercoagulable states, and thrombosis can occur in almost every vessel and microcirculation, favouring systemic disbalance which might be driven by autoantibodies [26]. Coagulation and inflammation have a common evolutionary origin and are integrated by a vast crosstalk which interacts in a very complex manner [27]. The central feature of hypercoagulability induced by inflammation is cytokine-mediated TF expression [28]. Our previous data are consistent with the hypothesis that anti- β 2GPI antibodies engage TLR4, inducing proinflammatory phenotype in monocytes which could be a risk factor for the onset and progression of the clinical features typical for APS [29, 30]. Whether anti-D1 β 2GPI antibodies might represent a potential risk factor for thromboembolic events deserve future investigations.

Although experimental models have shown the main role of thrombotic events in APS, studies in humans suggest that thrombotic events cannot account for all of the histopathologic findings in placenta from women with obstetric APS [3, 26, 31]. aPL may target the trophoblast, through direct binding with anionic PL or β 2GPI expressed on the surface of trophoblast cells affecting its invasiveness in vitro, inducing syncytiotrophoblast apoptosis, a complement activating at the maternal–fetal interface, etc. [31–33]. Another mechanism of spontaneous abortion might be NK cell activity [34]. By virtue of their ability to mediate cytotoxicity, NK cells and CD8+ cells are positioned to play a role in regulating autoimmune responses [35]. The two major NK cell subsets, CD56^{bright} and CD56^{dim}, exert different functional activities [36]. Within these subsets, antibody-mediated cell cytotoxicity is mostly confined to the CD56^{dim} subset, whereas cytokine production is assigned to the CD56^{bright} subset [37]. Observed in our study CD56^{dim} NK cells in the presence of anti-D1 β 2GPI as well as an increase in activation marker CD69 point to the prevalence of NK cells with an increased cytotoxic activity. The shedding of CD16 from the surface of NK cells through antibody cross-linking of activating receptors was shown to produce a potent signal for inducing ADCC [38]. It was shown that proteolytic cleavage or endocytosis of CD16 are aimed to dampen stimulatory signals and control excessive inflammation leading to autoimmunity, representing a regulatory mechanism by which NK cell activity is restricted to avoid auto-aggressiveness [39, 40].

It is believed that cytotoxicity of the NK cells may represent a mechanism of abortion [41]. It was shown that the increased number of NK cells in peripheral blood of APS patients with recurrent spontaneous abortion was correlated with the lower number of CD56^{bright} cells [42, 43]. Increased number of NK cells was also found in placental bed biopsies in recurrent spontaneous abortions, and the cytotoxic activity of these cells has been shown

to be increased [44]. Demonstrated changes in the phenotype of NK cells caused by anti-D1 β 2GPI in our study might represent a potential mechanism explaining an association of domain D1 with obstetrical complications in APS [23].

A marked increase in cellular responses to anti-D1 β 2GPI, namely the activation of monocytes, Tc and NK cells, was associated with the suppressed B cell activation. A shift from a humoral immune response to a cellular immune response in the presence of anti-D1 β 2GPI, occurring at least in vitro, may account for deleterious effects during pregnancy. The pathogenicity of autoantibodies in different autoimmune disorders has been extensively debated. The direct pathogenic role of aPL antibodies was demonstrated in animal models showing pregnancy loss and thrombus formation after the immunisation of animals with aPLs [45, 46]. Another proof is evidence of the clinical improvement after the removal of autoantibodies by plasma exchange or plasmapheresis [47, 48]. Our study shows the ability of patient-derived aPL to induce immune cell activation and contribute to the thrombotic events. Functional relevance and signaling pathways involved in the immune response to anti-D1 β 2GPI deserve further investigations.

The study has several limitations. First, the main criterion for the patients' selection was aPL positivity, not diagnosis. Second, the influence of the different treatments was not taken into account. Third, the mean titers of IgG and IgM aPL in studied groups differ. Finally, the pooled plasma preparations certainly contain a different set of humoral factors which could not be predicted and measured, preventing a more precise estimation of the pathogenic role of studied antibodies. Despite this, we believe that cellular responses elicited by the patient-derived plasma may better reflect the situation occurring in vivo than using purified antibodies.

Conclusions

Our findings further support the concept that anti-D1 β 2GPI have the potential to contribute to the thrombotic events and obstetrical complications. As treatment of patients with aPL-associated thrombosis or fetal loss requires the use of several anticoagulation strategies and even immunotherapy, the epitope specificity of circulating aPL may provide a rationale for specific treatment of APS patients according to their aPL profile. Accurate risk stratification for the development of vascular events in patients remains challenging.

Abbreviations

APS: Antiphospholipid syndrome; aPL: Antiphospholipid antibodies; β 2GPI: β 2-Glycoprotein I; anti-D1 β 2GPI: Anti-domain 1 β 2-glycoprotein I antibodies; aCL: Anticardiolipin antibodies; LA: Lupus anticoagulant; TF: Tissue factor; Tc:

T cytotoxic cells; NK: Natural killer; ADCC: Antibody-dependent cellular cytotoxicity; TLR: Toll like receptor; SLE: Systemic lupus erythematosus; MAPK: P35 mitogen-activated protein kinases; NF- κ B: Nuclear factor kappa-light-chain-enhancer of activated B cells; ERK1/2: Extracellular signal-regulated kinase 1/2.

Acknowledgements

Not applicable.

Authors' contributions

GM, AM: designed the study and prepared a draft of the manuscript; LS, JU, AH, TP: performed the measurements of aPL titers and provided the clinical samples; GM, SM: performed in vitro experiments; GM, EK: data analysis and interpretation; GM, TP, EK: revised the manuscript. All authors read and approved the final manuscript.

Funding

This work was supported by State Committee Science MES RA, in frame of the research project no. SCS 18T-1F396, Internal grant agency of Palacky University (IGA UP_2020_016, IGA UP_2020_002), and in part by Ministry of Health of Czech Republic (MH CZ – DRO (FNOL, 00098892).

Availability of data and materials

The datasets used and/or analysed during the current study are available from the corresponding author on reasonable request.

Ethics approval and consent to participate

The study was approved by the ethics committee of University Hospital and Palacky University Olomouc. Informed consent was obtained from all participants included in this study.

Consent for publication

Not applicable.

Competing interests

The authors declare that they have no competing interests.

Author details

¹ Laboratory of Molecular and Cellular Immunology, Institute of Molecular Biology NAS RA, 7 Hasratyan St., 0014 Yerevan, Armenia. ² Department of Immunology, Faculty of Medicine and Dentistry, Palacky University Olomouc and Faculty Hospital, Olomouc, Czech Republic. ³ Department of Hemato-oncology, Faculty of Medicine and Dentistry, Palacky University Olomouc and Faculty Hospital, Olomouc, Czech Republic.

Received: 26 November 2019 Accepted: 19 February 2020

Published online: 02 March 2020

References

- Gómez-Puerta JA, Cervera R. Diagnosis and classification of the antiphospholipid syndrome. *J Autoimmun*. 2014;48–49:20–5.
- Shoenfeld Y, Twig G, Katz U, Sherer Y. Autoantibody explosion in antiphospholipid syndrome. *J Autoimmun*. 2008;30:74–83.
- Schreiber K, Sciascia S, de Groot PG, Devreese K, Jacobsen S, Ruiz-Irastorza G, et al. Antiphospholipid syndrome. *Nat Rev Dis Primers*. 2018;4:17103.
- Meroni PL, Borghi MO, Raschi E, Tedesco F. Pathogenesis of antiphospholipid syndrome: understanding the antibodies. *Nat Rev Rheumatol*. 2011;7:330–9.
- Pengo V, Testa S, Martinelli I, Ghirarduzzi A, Legnani C, Gesele P, et al. Incidence of a first thromboembolic event in carriers of isolated lupus anticoagulant. *Thromb Res*. 2015;135:46–9.
- Amengual O, Atsumi T, Khamashta MA. Tissue factor in antiphospholipid syndrome: shifting the focus from coagulation to endothelium. *Rheumatology (Oxford)*. 2003;42:1029–31.
- Harper BE, Wills R, Pierangeli SS. Pathophysiological mechanisms in antiphospholipid syndrome. *Int J Clin Rheumatol*. 2011;6:157–71.
- Mustonen P, Lehtonen KV, Javel K, Puurunen M. Persistent antiphospholipid antibody (aPL) in asymptomatic carriers as a risk factor for future thrombotic events: a nationwide prospective study. *Lupus*. 2014;23:1468–76.
- Martirosyan A, Aminov R, Manukyan G. Environmental triggers of auto-reactive responses: induction of antiphospholipid antibody formation. *Front Immunol*. 2019;10:1609.
- Bibas M, Biava G, Antinori A. HIV-associated venous thromboembolism. *Mediterr J Hematol Infect Dis*. 2011;3:e2011030.
- Ramos-Casals M, Cervera R, Lagrutta M, Medina F, García-Carrasco M, de la Red G, et al. Hispanoamerican Study Group of Autoimmune Manifestations of Chronic Viral Disease (HISPAMEC). Clinical features related to antiphospholipid syndrome in patients with chronic viral infections (hepatitis C virus/HIV infection): description of 82 cases. *Clin Infect Dis*. 2004;38:1009–16.
- Neville C, Rauch J, Kassis J, Chang ER, Joseph L, Le Comte M, et al. Thromboembolic risk in patients with high titre anticardiolipin and multiple antiphospholipid antibodies. *Thromb Haemost*. 2003;90:108–15.
- Sciascia S, Baldovino S, Schreiber K, Solfetti L, Radin M, Cuadrado MJ, et al. Thrombotic risk assessment in antiphospholipid syndrome: the role of new antibody specificities and thrombin generation assay. *Clin Mol Allergy*. 2016;14:6.
- de Laat B, Pengo V, Pabinger I, Musial J, Voskuyl AE, Bultink IE, et al. The association between circulating antibodies against domain I of β 2-glycoprotein I and thrombosis: an international multicenter study. *J Thromb Haemost*. 2009;7:1767–73.
- Kelchtermans H, Chayouà W, Laat B. The significance of antibodies against domain I of beta-2 glycoprotein I in antiphospholipid syndrome. *Semin Thromb Hemost*. 2018;44:458–65.
- deLaat B, Wu XX, van Lummel M, Derksen RH, de Groot PG, Rand JH. Correlation between antiphospholipid antibodies that recognize domain I of beta2-glycoprotein I and a reduction in the anticoagulant activity of annexin A5. *Blood*. 2007;109:1490–4.
- Andreoli L, Chighizola CB, Nalli C, Gerosa M, Borghi MO, Pregnolato F, et al. Clinical characterization of antiphospholipid syndrome by detection of IgG antibodies against β 2-glycoprotein I domain 1 and domain 4/5: ratio of anti-domain 1 to anti-domain 4/5 as a useful new biomarker for antiphospholipid syndrome. *Arthr Rheumatol*. 2015;67:2196–204.
- De Craemer AS, Musial J, Devreese KM. Role of anti-domain 1- β 2 glycoprotein I antibodies in the diagnosis and risk stratification of antiphospholipid syndrome. *J Thromb Haemost*. 2016;14:1779–87.
- Slavik L, Janek D, Ulehlova J, Krcova V, Hlusi A, Prochazkova J. Detection of anti-domain I β -2 glycoprotein I antibodies as new potential target in antiphospholipid syndrome diagnosis. *J Hematol Thrombo Dis*. 2017;5:5.
- Manukyan G, Papajik T, Gajdos P, Mikulkova Z, Urbanova R, Gabcova G, et al. Neutrophils in chronic lymphocytic leukemia are permanently activated and have functional defects. *Oncotarget*. 2017;8:84889–901.
- Sulica A, Morel P, Metes D, Herberman RB. Ig-binding receptors on human NK cells as effector and regulatory surface molecules. *Int Rev Immunol*. 2001;20:371–414.
- Feger U, Tolosa E, Huang YH, Waschbisch A, Biedermann T, Melms A, et al. HLA-G expression defines a novel regulatory T-cell subset present in human peripheral blood and sites of inflammation. *Blood*. 2007;110:568–77.
- Chighizola CB, Pregnolato F, Andreoli L, Bodio C, Cesana L, Comerio C, et al. Beyond thrombosis: anti- β 2GPI domain 1 antibodies identify late pregnancy morbidity in anti-phospholipid syndrome. *J Autoimmun*. 2018;90:76–83.
- Mahler M, Albesa R, Zohoury N, Bertolaccini ML, Ateka-Barrutia O, Rodriguez-Garcia JL, et al. Autoantibodies to domain 1 of beta 2 glycoprotein I determined using a novel chemiluminescence immunoassay demonstrate association with thrombosis in patients with antiphospholipid syndrome. *Lupus*. 2016;25:911–6.
- Miyakis S, Lockshin MD, Atsumi T, Branch DW, Brey RL, Cervera R, et al. International consensus statement on an update of the classification criteria for definite antiphospholipid syndrome (APS). *J Thromb Haemost*. 2006;4:295–306.
- Salmon JE, de Groot PG. Pathogenic role of antiphospholipid antibodies. *Lupus*. 2008;17:405–11.
- Foley JH, Conway EM. Cross talk pathways between coagulation and inflammation. *Circ Res*. 2016;118:1392–408.
- Dahlbäck B. Coagulation and inflammation—close allies in health and disease. *Semin Immunopathol*. 2012;34:1–3.
- Martirosyan A, Petrek M, Navratilova Z, Blbulyan A, Boyajyan A, Manukyan G. Differential regulation of proinflammatory mediators following

- LPS- and ATP-induced activation of monocytes from patients with antiphospholipid syndrome. *Biomed Res Int.* 2015;2015:292851.
30. Colasanti T, Alessandri C, Capozzi A, Sorice M, Delunardo F, Longo A, et al. Autoantibodies specific to a peptide of β 2-glycoprotein I cross-react with TLR4, inducing a proinflammatory phenotype in endothelial cells and monocytes. *Blood.* 2012;120:3360–70.
 31. Di Simone N, Meroni PL, de Papa N, Raschi E, Caliandro D, De Carolis CS, et al. Antiphospholipid antibodies affect trophoblast gonadotropin secretion and invasiveness by binding directly and through adhered beta2-glycoprotein I. *Arthr Rheumatol.* 2000;43:140–50.
 32. Di Simone N, Castellani R, Caliandro D, Caruso A. Monoclonal anti-annexin V antibody inhibits trophoblast gonadotropin secretion and induces syncytiotrophoblast apoptosis. *Biol Reprod.* 2001;65:1766–70.
 33. Holers VM, Girardi G, Mo L, Guthridge JM, Molina H, Pierangeli SS, et al. Complement C3 activation is required for antiphospholipid antibody-induced fetal loss. *J Exp Med.* 2002;195:211–20.
 34. Yamada H, Morikawa M, Kato EH, Shimada S, Kobashi G, Minakami H. Pre-conceptional natural killer cell activity and percentage as predictors of biochemical pregnancy and spontaneous abortion with normal chromosome karyotype. *Am J Reprod Immunol.* 2003;50:351–4.
 35. Fogel LA, Yokoyama WM, French AR. Natural killer cells in human autoimmune disorders. *Arthr Res Ther.* 2013;15:216.
 36. De Maria A, Bozzano F, Cantoni C, Moretta L. Revisiting human natural killer cell subset function revealed cytolytic CD56(dim)CD16+ NK cells as rapid producers of abundant IFN-gamma on activation. *Proc Natl Acad Sci USA.* 2011;108:728–32.
 37. Batoni G, Esin S, Favilli F, Pardini M, Bottai D, Maisetta G, et al. Human CD56bright and CD56dim natural killer cell subsets respond differentially to direct stimulation with *Mycobacterium bovis* bacillus Calmette-Guérin. *Scand J Immunol.* 2005;62:498–506.
 38. Romee R, Foley B, Lenvik T, Wang Y, Zhang B, Ankarlo D, et al. NK cell CD16 surface expression and function is regulated by a disintegrin and metalloprotease-17 (ADAM17). *Blood.* 2013;121:3599–608.
 39. Grzywacz B, Kataria N, Verneris MR. CD56(dim)CD16(+) NK cells downregulate CD16 following target cell induced activation of matrix metalloproteinases. *Leukemia.* 2007;21:356–9.
 40. Cecchetti S, Spadaro F, Lugini L, Podo F, Ramoni C. Functional role of phosphatidylcholine-specific phospholipase C in regulating CD16 membrane expression in natural killer cells. *Eur J Immunol.* 2007;37:2912–22.
 41. Carp HJ, Shoenfeld Y. Recurrent spontaneous abortions in antiphospholipid syndrome: natural killer cells—an additional mechanism in a multifactorial process. *Rheumatology (Oxford).* 2007;46:1517–9.
 42. Perricone C, De Carolis C, Giacomelli R, Zaccari G, Cipriani P, Bizzi E, et al. High levels of NK cells in the peripheral blood of patients affected with anti-phospholipid syndrome and recurrent spontaneous abortion: a potential new hypothesis. *Rheumatology (Oxford).* 2007;46:1574–8.
 43. King K, Smith S, Chapman M, Sacks G. Detailed analysis of peripheral blood natural killer (NK) cells in women with recurrent miscarriage. *Hum Reprod.* 2010;25:52–8.
 44. Clifford K, Flanagan AM, Regan L. Endometrial CD56+ natural killer cells in women with recurrent miscarriage: a histomorphometric study. *Hum Reprod.* 1999;14:2727–30.
 45. Xiao S, Lu X, Li X, Zhang L, Bao S, Zhao A. Study on the pathogenesis of autoimmune-type recurrent spontaneous abortion by establishing a new mouse model. *Eur J Obstet Gynecol Reprod Biol.* 2014;178:84–8.
 46. Ramesh S, Morrell CN, Tarango C, Thomas GD, Yuhanna IS, Girardi G. Antiphospholipid antibodies promote leukocyte-endothelial cell adhesion and thrombosis in mice by antagonizing eNOS via β 2GPI and apoER2. *J Clin Invest.* 2011;121:120–31.
 47. Bambauer R, Latza R, Bambauer C, Burgard D, Schiel R. Therapeutic apheresis in autoimmune diseases. *Open Access Rheumatol.* 2013;5:93–103.
 48. Martirosyan A, Petrek M, Kishore A, Manukyan G. Immunomodulatory effects of therapeutic plasma exchange on monocytes in antiphospholipid syndrome. *Exp Ther Med.* 2016;12:1189–95.

Publisher's Note

Springer Nature remains neutral with regard to jurisdictional claims in published maps and institutional affiliations.

Ready to submit your research? Choose BMC and benefit from:

- fast, convenient online submission
- thorough peer review by experienced researchers in your field
- rapid publication on acceptance
- support for research data, including large and complex data types
- gold Open Access which fosters wider collaboration and increased citations
- maximum visibility for your research: over 100M website views per year

At BMC, research is always in progress.

Learn more biomedcentral.com/submissions

