

Anti-Müllerian hormone: ovarian reserve testing and its potential clinical implications

Simone L. Broer^{1,*}, Frank J.M. Broekmans¹, Joop S.E. Laven², and Bart C.J.M. Fauser¹

¹Department of Reproductive Medicine & Gynaecology, University Medical Center Utrecht, Heidelberglaan 100, 3584 CX Utrecht, The Netherlands ²Department of Obstetrics and Gynaecology, Erasmus Medical Center, Rotterdam, The Netherlands

*Correspondence address. University Medical Center Utrecht, Room F05.126, PO Box 85500, 3508 GA, Utrecht, The Netherlands; E-mail: s.l.broer-2@umcutrecht.nl

Submitted on October 28, 2013; resubmitted on February 4, 2014; accepted on March 14, 2014

TABLE OF CONTENTS

- Background
 - Related human ovarian physiology
- AMH measurement
 - AMH assays
 - Factors influencing AMH levels
- Ovarian reserve testing
 - Fecundity and menopause prediction in the general population
 - Prediction of pregnancy chances in couples presenting with infertility
 - Patient management in IVF
 - Management of women with cancer
 - Novel indications for ovarian reserve testing
- Ovarian dysfunction
 - PCOS
 - Other forms of anovulation
- Conclusion

BACKGROUND: In women, anti-Müllerian hormone (AMH) is exclusively produced by granulosa cells of ovarian follicles during the early stages of follicle development. After an initial increase until early adulthood, AMH concentrations slowly decrease with increasing age until becoming undetectable ~5 years before menopause when the stock of primordial follicles is exhausted. However, major individual variability exists in the pace of follicle pool depletion and the initial size of the follicle pool, reflected by a wide range of age at menopause. Individual AMH serum concentration does accurately reflect the size of the pool of antral follicles, representing the quantity of the remaining primordial follicles. Accordingly, AMH levels may vary significantly in women of the same chronological age, allowing AMH to predict the remaining length of a woman's reproductive lifespan.

METHODS: Following 10 years of intense clinical research in this area (with over 300 papers published in core clinical journals every year), the level of evidence justifying use of AMH in ovarian reserve testing is rapidly increasing. We have conducted a summarizing review regarding all evidence published.

RESULTS: Many studies have convincingly demonstrated that AMH is the best currently available measure of ovarian reserve under a variety of clinical situations, such as infertility treatment (especially IVF), the forecasting of reproductive lifespan, ovarian dysfunction (especially polycystic ovary syndrome) and gonadotoxic cancer treatment or ovarian surgery. Moreover, AMH may help to individualize dosing for ovarian stimulation thereby improving the efficiency and safety of IVF. However, there are concerns about the performance of the AMH assay under different

conditions regarding storage of samples and handling techniques. Therefore an international guideline for laboratories and a reference preparation are needed to make test results between laboratories truly comparable.

CONCLUSIONS: AMH is the best current available measure of ovarian reserve for different clinical conditions. However, prospective well powered studies comparing different infertility treatment strategies based on initial AMH levels using appropriate end-points, such as live birth and cost-effectiveness, are urgently awaited. Such studies could represent a true step forward in rendering counseling and infertility care more patient tailored.

Key words: anti-Müllerian hormone / anti-Müllerian hormone assay / ovarian reserve testing / menopause / polycystic ovaries

Background

The gonadal hormone anti-Müllerian hormone (AMH) is a 140 kDa disulphide-linked homodimeric glycoprotein and a member of the transforming growth factor- β (TGF- β) superfamily of growth and differentiation factors, just like inhibins and activins. AMH, initially referred to as Müllerian-inhibiting substance (MIS), has been known since the 1940s for its role in male sexual differentiation during early embryonic development due to the pioneering work of Alfred Jost. AMH, produced by fetal Sertoli cells, induces regression of the Müllerian duct, allowing Wolffian ducts to develop into the male reproductive tract under the influence of testosterone (Wilson *et al.*, 1981). Testicular production of AMH has been described as early as 8 weeks gestation (Lee *et al.*, 1997).

In the absence of AMH, the embryo develops into a female, allowing the Müllerian duct to differentiate into the upper vagina, uterus and oviduct. However, in later fetal life AMH is synthesized by granulosa cells residing within ovarian follicles, as first described in the adult chicken ovary (Hutson *et al.*, 1981). In the human fetus, ovarian AMH production starts around birth (Rajpert-De Meyts *et al.*, 1999). In antral follicles AMH is predominantly secreted into the intrafollicular compartment giving rise to high follicular fluid concentrations. The secreted quantities are large enough to permit the detection of AMH in the circulation (Hudson *et al.*, 1990; Josso *et al.*, 1990; Lee *et al.*, 1997; Jeppesen *et al.*, 2013).

Molecular mechanisms involved in AMH action exhibit many similarities with those of TGF- β . Ligand binding specifically to the extracellular domain of the AMH type II transmembrane receptor causes phosphorylation of the type I receptor and subsequent downstream signaling via intracellular Smad proteins (Teixeira *et al.*, 2001; Salhi *et al.*, 2004). In the human, mutations have been described in genes encoding AMH itself (located on chromosome 19) or its type II receptor (chromosome 12). Such mutations (affecting ligand binding, signal transduction or intracellular transport) often exhibit autosomal recessive segregation, causing the persistent Müllerian duct syndrome in men (Josso *et al.*, 2005; Belville *et al.*, 2009). Interestingly, several family studies have shown normal fertility of affected sisters (Abduljabbar *et al.*, 2012). AMH type II receptors have also been demonstrated in other tissues (such as the brain, breast and endometrium) although their functional role remains elusive (Segev *et al.*, 2000; Lebeurrier *et al.*, 2008; Wang *et al.*, 2009).

Animal experiments using AMH knock-out mice disclosed important intra-ovarian roles for AMH in inhibiting growth of resting primordial follicles. Augmented primordial follicle recruitment was observed in AMH null mice compared with the wild type. At 4 months, the number pre-antral and small antral follicles was observed to be increased. In contrast, both at 4 and 13 months of age, the number of primordial follicles was significantly reduced. Collectively, these observations suggest that in

mice in the absence of AMH, primordial follicles are recruited at a faster rate, resulting in premature exhaustion of the primordial follicle pool (Durlinger *et al.*, 1999, 2001). Since AMH null mice exhibit low levels of FSH along with increased numbers of growing follicles, it has been hypothesized that follicles are more sensitive to FSH in the absence of AMH. The presumed inhibitory effect of AMH on follicular sensitivity to FSH could play a role in the process of dominant follicle selection (Durlinger *et al.*, 1999; McGee and Hsueh, 2000). As antral follicles become larger, the AMH expression diminishes and this could reduce the threshold level for FSH, allowing follicles to continue growing and to ovulate in the next estrous cycle (Durlinger *et al.*, 2001; Al Qahtani *et al.*, 2005; Visser *et al.*, 2007). It remains to be shown, however, whether such intra-ovarian paracrine roles for AMH are also operative in the human.

Related human ovarian physiology

Immunohistochemistry in human ovarian tissue confirmed the absence of AMH staining in primordial follicles, along with high AMH expression in primary, secondary, pre-antral and early antral follicles <4 mm diameter. AMH staining gradually disappeared in follicles between 4 and 8 mm diameter (Weenen *et al.*, 2004) (Fig. 1). A recent study confirmed this finding, demonstrating that AMH gene expression and total AMH protein in follicular fluid increased until a follicular diameter of 8 mm, after which a sharp decline occurred (Jeppesen *et al.*, 2013). It was demonstrated that 5–8 mm follicles contribute ~60% of the circulating AMH (Jeppesen *et al.*, 2013). In contrast, granulosa cells of larger pre-ovulatory follicles beyond 10 mm fail to produce AMH.

In ovarian hyperstimulation protocols (when the majority of antral follicles develop into large dominant follicles), a significant decline in serum AMH levels is observed (Fanchin *et al.*, 2003). Moreover, with increasing age the prevalence of large follicles increases, which may also have a negative association with AMH (Bentzen *et al.*, 2013). In conclusion, AMH in the peripheral circulation is mainly derived from antral follicles. Since this number is proportionally related to the primordial follicle pool (Gougeon, 1984), AMH may indirectly represent the ovarian reserve.

Early follicle development, before secondary follicle recruitment, is largely gonadotrophin independent (Fauser and Van Heusden, 1997). AMH serum levels are not affected by dominant follicle growth during the late follicular phase of the normal menstrual cycle. This renders AMH easy to use clinically as opposed to other currently available markers of ovarian aging, such as inhibin B, estradiol (E₂) and FSH, which are all menstrual cycle dependent (Fig. 2) and constitute relatively late markers of the ongoing process of primordial follicle pool depletion.

Ovarian aging relates to the decline of the quantity and quality of the ovarian follicle pool with increasing age. Preliminary initial studies

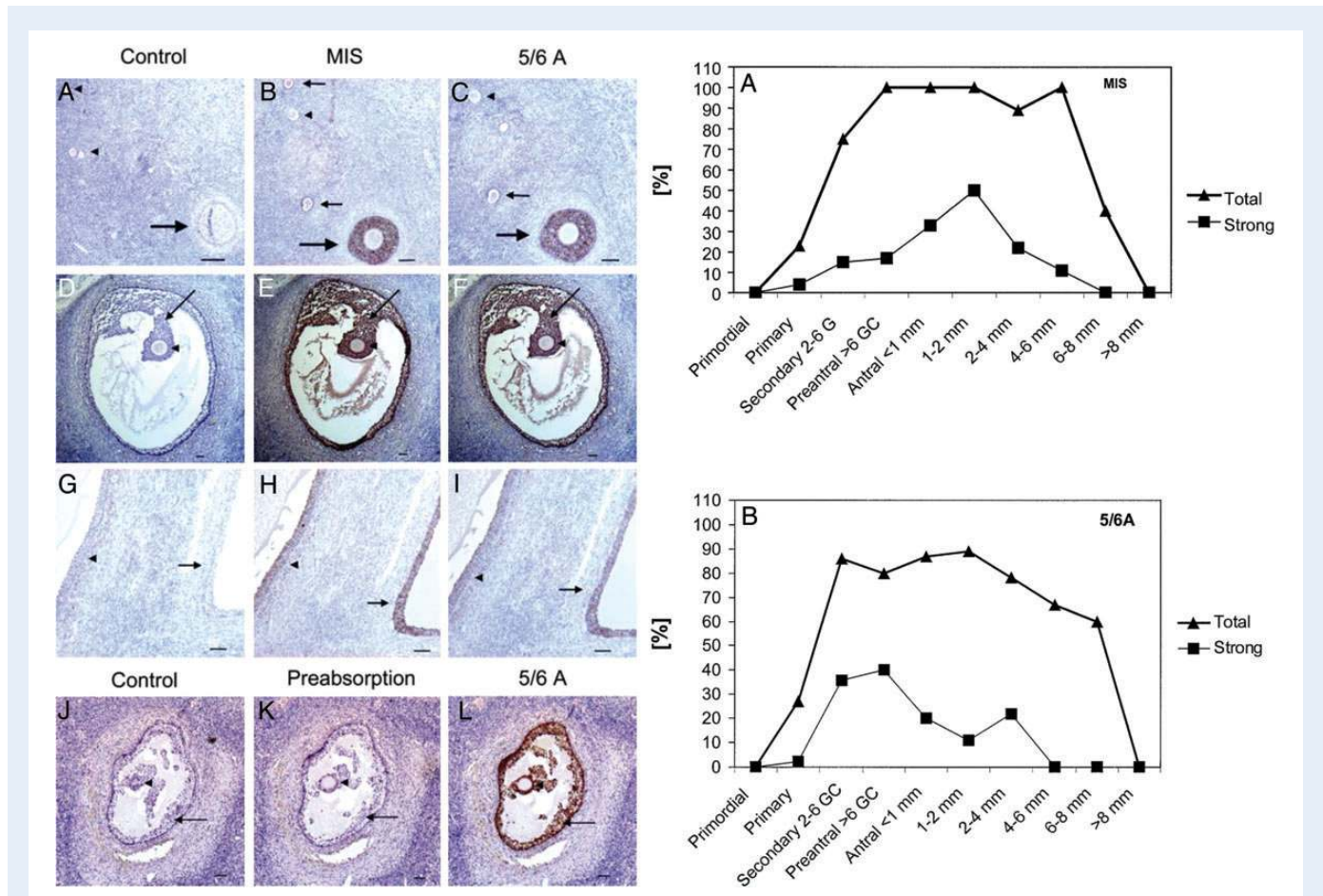


Figure 1 Anti-Müllerian hormone (AMH) immunohistochemical staining in human ovarian tissue sections, along with the graphical summary data, from Weenen et al. (2004). Left: Micrographs of AMH immunohistochemistry staining of human ovarian tissue sections. Specific (brown) AMH stain deposition is present in the cytoplasm of granulosa cells (GC). Scale bar = 100 mm. Sections A, D and G are controls; sections B, E and H were stained using the Müllerian-inhibiting substance (MIS) C-20 antibody; sections C, F and I using the 5/6A antibody. (A–C) 3100 magnification with a primordial follicle (arrowhead), a primary follicle (small arrow) and a secondary follicle (large arrow). Primordial follicles show no immunostaining of the cytoplasm of the granulosa cells, primary follicles show normal staining (+) and secondary follicle shows strong staining (++). (D–F) 340 magnification with a small antral follicle < 1 mm. The oocyte shows weak staining (arrowhead), whereas the granulosa cells (arrow) show strong staining (++). (G–I) 3100 magnification showing two larger antral follicles. Left side follicle (6.1 mm diameter) shows weak staining (+/±) of the granulosa cells (arrowhead), smaller follicle (2.5 mm diameter) right side (arrow) shows normal staining (+). (J–L) 340 magnification with a small antral follicle < 1 mm. The oocyte shows weak, non-specific brown staining (arrowhead). The granulosa cells show strong staining (++) with the 5/6A antibody. When the peptide is added to the antibody, no immunohistochemical staining occurs (K). Right: Graphical summary of the immunohistochemical data. Only the percentages of follicles with strong (++) and total staining (+ and ++) are shown. The total staining in the graphical depictions represents an addition of the percentage of follicles within a certain class with normal (+) and strong (++) staining (total staining; triangles). For comparison the percentage of follicles of a certain class that show strong staining is depicted separately (strong staining; squares). Staining increases rapidly with the stage of the follicles and decreases when follicles are >4–6 mm diameter. In the upper graph (A), staining with the MIS antibody is shown. In the lower graph (B), staining with the 5/6A antibody is shown.

proposed AMH as a putative marker of ovarian aging by demonstrating decreasing levels over time in young normo-ovulatory women. A strong correlation between AMH and the antral follicle count (AFC) assessed by transvaginal ultrasound was also observed (de Vet et al., 2002). A similar association between AMH and age, AFC, and FSH was subsequently described in women undergoing IVF (van Rooij et al., 2002). Numerous additional studies confirmed that AMH serum levels decline with increasing chronological age. In women from 21 years of age and onwards the average annual decline has been calculated to be 5.6% (Bentzen et al., 2013). Further proof of the validity of AMH indirectly reflecting the size of the primordial follicle pool comes from an elegant

study in 42 women undergoing oophorectomy for benign gynecologic reasons (Fig. 3). After adjusting for age, both AMH and AFC correlated well with the number of primordial follicles present in ovarian tissue (Hansen et al., 2011).

Major individual variability exists in ovarian aging—believed to predominantly result from differences in the pace of follicle pool depletion—coinciding with a large age range of normal menopause between 40 and 60 years (te Velde and Pearson, 2002; Broekmans et al., 2009). Some women at age 35 years may present with much more advanced ovarian aging than others; i.e. her individual AMH concentration may be similar to mean levels of women at age 45 years (Kelsey et al.,

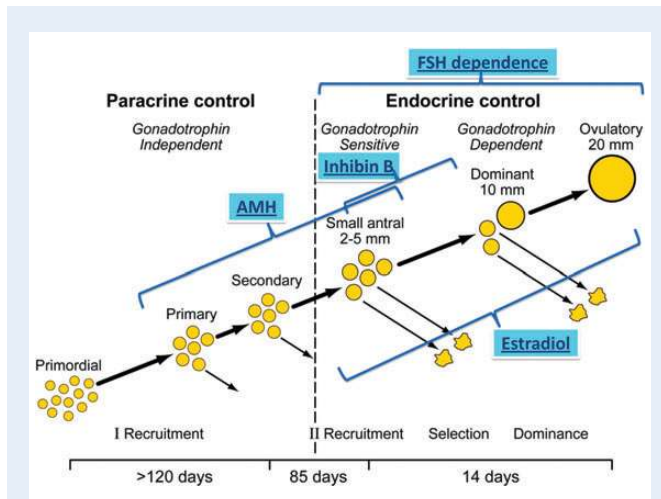


Figure 2 Schematic representation of follicle development emphasizing that AMH is produced in early stages of follicle development (characterized by gonadotrophin-independent growth), as opposed to Inhibin B and estradiol produced by follicles at later stages of development where growth is FSH-dependent. Adapted from McGee and Hsueh (2000).

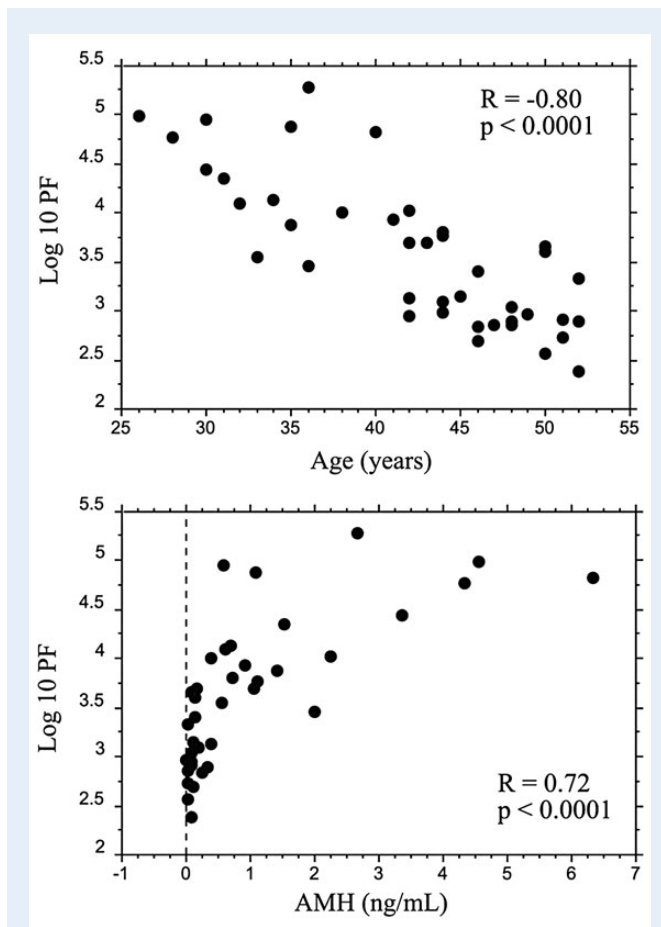


Figure 3 Age (top panel) and AMH serum levels (lower panel) in relation to number of remaining primordial follicles (PF) as assessed in human ovarian tissue, from Hansen *et al.* (2011).

2011). In recent years several nomograms for normal levels of serum AMH from birth to menopause have been developed (Kelsey *et al.*, 2011; Nelson *et al.*, 2011a, b). Collectively these studies show that AMH levels are low during prepubertal development, rise during early puberty and reach a plateau ~20–25 years of age, followed by a gradual decline thereafter until becoming undetectable around menopause (Fig. 4) (Hagen *et al.*, 2010; Kelsey *et al.*, 2011; Lie Fong *et al.*, 2012).

It is not yet understood why AMH levels rise during childhood and adolescence but changes in the hypothalamic–pituitary–ovarian axis along with differences in the dynamics of early follicle recruitment and growth of the ovary have been proposed as the most likely explanation (Buzi *et al.*, 1998). Hence, it appears that AMH can only be used to assess the extent of ovarian aging in women beyond 25 years of age.

AMH measurement

AMH assays

Between 2002 and 2010 two different AMH assays have been used in human female studies. These assays have been simultaneously developed by Diagnostic Systems Laboratory (DSL) and by Immunotech (IOT), applying different AMH antibodies (Nelson and La Marca, 2011). Until today, various sources for the AMH standard have been used for calibration and no international standard has yet been developed. The IOT assay produced AMH concentrations ~40% higher compared with DSL, rendering the combined analysis of trials employing different assays problematic (Freour *et al.*, 2007).

In 2010 both companies merged under Beckman Coulter and a single new two-step, sandwich-type enzymatic, microplate assay (the AMH gen II assay) was introduced. A more stable antibody is now used to bind to the mature region of AMH along with the IOT calibrator standard curve and AMH levels can be measured in 20 μ l serum in <3 h (Fleming and Nelson, 2012). The gen II assay is calibrated to the old IOT standards and AMH levels are thus comparable to the IOT assay and 40% higher than the previous DSL version (Kumar *et al.*, 2010; Wallace *et al.*, 2011; Fleming and Nelson, 2012). The gen II assay has a 2-fold greater sensitivity (0.08 ng/ml) than the IOT assay and the cross-reactivities of inhibin A, activin A, FSH and LH were below the detection limit of the assay (Kumar *et al.*, 2010).

Several studies have been performed to investigate the robustness of the gen II assay for clinical application. These studies have determined several factors that could affect the reproducibility of the test result. Intra/inter-assay differences, between laboratory differences and sample stability in storage all may be influenced by sometimes unknown factors.

Regarding the reproducibility of the new assay, the inter and intra-assay variation was shown to be small (<5%) in several studies, where measurements were performed in the same laboratory (Kumar *et al.*, 2010; Rustamov *et al.*, 2012). However, when 10 laboratories tested 20 serum samples with the same gen II assay from Beckman Coulter, the in-laboratory reproducibility was good but the between-laboratory results showed a wide range of average values relative to the consensus value (Zuvela *et al.*, 2013). These differences may represent dissimilarities in storage and shipping conditions, or differences in the work-up of this manual enzyme-linked immunosorbent assay (ELISA) test system.

When looking into the inter-sample stability and reproducibility, conflicting results were obtained regarding the variation caused by various

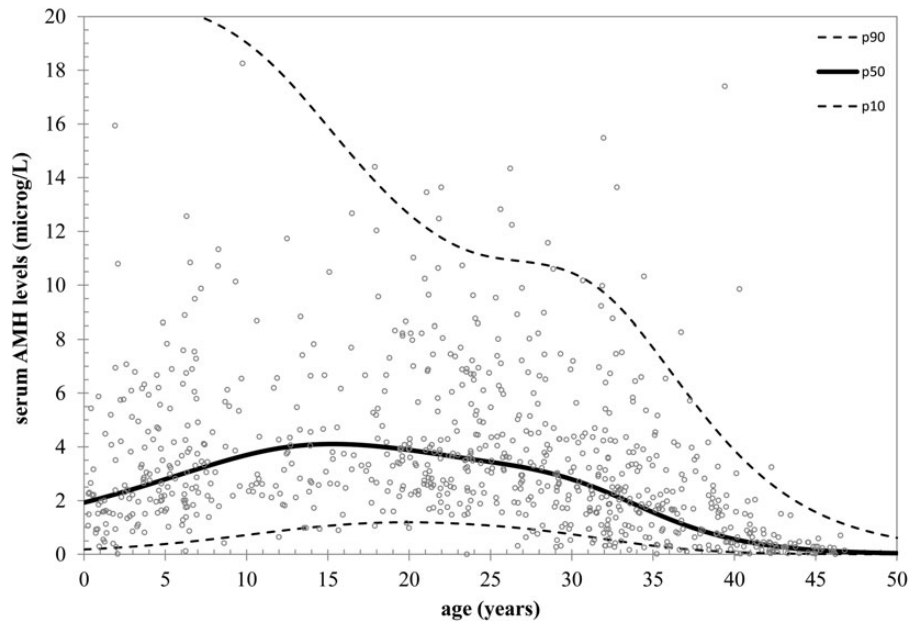


Figure 4 AMH nomogram from birth to menopause in 804 healthy females from Lie Fong et al. (2012). Reference lines of serum AMH for the 10th, 50th and 90th percentiles of predicted AMH values versus age.

storage conditions. A first study demonstrated a good sample stability and reproducibility of the gen II assay, also after freezing and thawing (Kumar et al., 2010). This could not be confirmed by one other study demonstrating a very high between sample variation, amounting to a variation coefficient of up to 60% (Rustamov et al., 2012). The explanation for this may lie in several factors. Regarding storage and handling of samples, it was demonstrated that in samples stored at room temperature for 7 days the AMH serum levels increase. Samples stored at -20°C yielded on average 23% higher values, while the same samples stored at -80°C showed no change (Rustamov et al., 2012). Another explanation for sample instability may be the effects of complement binding. Due to complement interference the test result may be lower than expected. This risk is highest in freshly drawn samples. It has been suggested that this can be avoided, or minimized, by adding a buffer and recent studies have already shown promising results by the pre-mixing of samples with assay buffer to potentiate AMH stability at all temperatures (ESHRE meeting London 2013). Also, automatic pipetting or centrifugation of samples within 5 h seems to reduce the influence of complement binding (Fleming and Nelson, 2012).

Data for the new Anhs Labs ultra-sensitive AMH and picoAMH ELISA assay were published recently (Welsh et al., 2014). The study demonstrates that this assay has a different calibration than the Gen II assay, but that its performance is suitable for clinical use. Enhanced sensitivity of the Ansh Labs picoAMH assay enables measurement of low AMH concentrations; however, further studies in different centers regarding the stability of this new assay still have to be performed (Welsh et al., 2014).

In conclusion, uncertainty remains concerning the stability of the AMH assay, specifically regarding optimal storage and handling conditions as well as the role for complement interference causing sample instability. Until all these factors have been studied thoroughly or an automated

assay is available, we are in need of international guidelines for all laboratories on how to store samples and perform AMH assays under the same condition, so that the influence of handling technique in causing different AMH results will not alter clinical management. Moreover, there is an urgent need to establish an international reference preparation to make test results comparable. Another possibility would be to use a harmonization sample against which every laboratory can gauge its own measurements. Until that time, we have to be careful in translating AMH cut-off levels from studies into our clinical practice, since it remains unclear if we can directly translate the AMH values from research projects into daily practice (Schipper et al., 2012).

Factors influencing AMH levels

Variation in AMH levels could also be explained by biological variance. Contradictory results have been described regarding intra- and inter-cycle variability of AMH levels. Some studies show these to be limited (Van Disseldorp et al., 2010) and merely represent fluctuations by chance, possibly related to gradual changes in the number of antral follicles present in both ovaries (Hehenkamp et al., 2006). However, other studies have demonstrated substantial fluctuations in the menstrual cycle (Wunder et al., 2007), which would argue in favor of measuring AMH levels at the early follicular phase only. Especially in young women, this fluctuation in AMH over a time period of several weeks may be quite extensive and needs to be taken into consideration if applied in clinical conditions (Overbeek et al., 2012).

Furthermore, we have to take into account the clinical conditions under which the samples were drawn. It has been suggested that AMH levels remain constant under the influence of exogenous sex steroids used for contraception (Somunkiran et al., 2007; Streuli et al., 2008; Steiner et al., 2010; Li et al., 2011; Deb et al., 2012). In a recent large

cohort study in >2000 women it was demonstrated that AMH levels decrease under current use of oral contraceptives (Dolleman *et al.*, 2013b). Such an effect was also demonstrated in other studies (Arbo *et al.*, 2007; Shaw *et al.*, 2011; Kristensen *et al.*, 2012). Previous use of oral contraception was not associated with lower AMH levels (Dolleman *et al.*, 2013b) and AMH levels may even be increased after discontinuation of oral contraceptives (van den Berg *et al.*, 2010). Both findings support the notion of a reversible suppressive subtle effect of oral contraceptives on AMH.

It was also demonstrated that under mid-luteal GnRH agonist administration AMH levels changed significantly across the initial 4 weeks (Hagen *et al.*, 2012a; Su *et al.*, 2013). Such observations suggest that if a patient is receiving GnRH agonist medication, for example in cancer treatment, AMH may not be a reliable marker of ovarian reserve.

Finally, various other factors were recently described to influence absolute AMH concentrations, including overweight (Freeman *et al.*, 2007; Su *et al.*, 2008; Piouka *et al.*, 2009b; Buyuk *et al.*, 2011), ethnicity (Seifer *et al.*, 2009), Vitamin D status (Dennis *et al.*, 2012; Merhi *et al.*, 2012), polymorphisms of AMH and its receptor (Kevenaar *et al.*, 2007), and genetic variants across the genome (Schuh-Huerta *et al.*, 2012). Current smoking has also been associated with lower AMH levels (Dolleman *et al.*, 2013b). The clinical relevance of these observations remains to be determined.

Ovarian reserve testing

Ovarian reserve testing aims to assess the reproductive potential of a given individual as a function of the quantity and quality of remaining oocytes. Evidence is accumulating suggesting that AMH is the best currently available test in terms of sensitivity and specificity as opposed to AFC, FSH, E₂ and inhibin B concentrations or various ovarian challenge tests (Practic Committee ASRM, 2012). Different areas of reproductive medicine exist where ovarian reserve testing by AMH may prove to be of distinct clinical benefit.

Fecundity and menopause prediction in the general population

In many Western countries the average age of women giving birth to their first child is approaching 30 years. Due to the ongoing trend of delayed childbearing, a significant proportion of women aiming to have a child beyond 30 years will already exhibit a reduced probability of spontaneous pregnancy. Accurate ovarian reserve testing may motivate some women to start a family at an earlier age (or alternatively apply fertility preservation by means of oocyte freezing) or alternatively reassure others that postponing childbearing will not interfere with her chances to achieve a pregnancy later on.

A first study in 100 unselected women aiming to conceive spontaneously aged 30–44 years disclosed a good correlation between initial AMH concentrations and natural fertility during a 6-month follow-up (Steiner *et al.*, 2011). Such an association could not be confirmed in a comparable number of younger women between 20 and 35 years of age (Hagen *et al.*, 2012b). More data are needed to draw meaningful conclusions regarding the ability of AMH to predict the chance of spontaneous pregnancy, especially at younger age.

It has been hypothesized that a fixed interval exists between age at natural sterility and age at menopause (te Velde and Pearson, 2002). Lately, several studies have been undertaken regarding the

prediction of age at natural menopause. In a long-term follow-up study, 257 women were followed for 11 years. It was demonstrated that using age and AMH the age range in which menopause will subsequently occur can be individually calculated (Fig. 5) (Broer *et al.*, 2011). Other studies have confirmed these findings (Tehrani *et al.*, 2011; Freeman *et al.*, 2012). These results have identified AMH as a promising marker for menopause prediction, although wide confidence intervals exist especially in women sampled at a younger age. Larger cohort studies are now starting to emerge, where the predictive role for AMH in conjunction with female age and other potential factors, such as BMI and smoking, will be defined in greater detail (Dolleman *et al.*, 2013a; La Marca *et al.*, 2013).

Prediction of pregnancy chances in couples presenting with infertility

Advanced female age is becoming increasingly important in the infertility clinic. Ovarian reserve testing may allow for a better assessment of the fertility potential of a given woman. This could permit to tailor the treatment plan accordingly, which may include expectant management in women with a good prognosis. Multiple attempts have been described in recent years to develop age-specific nomograms for AMH concentrations involving tens of thousands of infertile women of reproductive age (Nelson *et al.*, 2011a; Seifer *et al.*, 2011; Leader *et al.*, 2012). Although age-specific AMH levels may have the potential to be of much clinical benefit, the disturbing implications of discordant findings between AMH and FSH (especially abnormal FSH coinciding with reassuring AMH levels occurring in 1 out of 18 women) remain to be addressed, but most likely emphasize the different nature of the two tests (Leader *et al.*, 2012; Schipper *et al.*, 2012). Ultimately, clinical studies should be undertaken in infertile couples to correlate individual AMH levels independent of chronological age with live birth rates, either after natural conception or following various infertility treatments.

Patient management in IVF

Many studies have been published regarding the prediction of IVF outcome by using ovarian reserve tests, such as AMH. Most studies published so far concerning AMH and subsequent IVF outcomes have been carried out in heterogeneous patient cohorts. Accordingly, conflicting results were obtained with regard to the capacity of AMH to predict treatment outcome. One important outcome measure is the response to ovarian hyperstimulation. Ovarian hyperstimulation is an integral part of IVF and is usually applied in a uniform standardized fashion regardless of individual patient characteristics. The majority of applied stimulation regimens are very complex, time consuming and costly. A distinct individual variability in ovarian response to stimulation is usually observed, varying from low or virtually no response (resulting in treatment cancelation or very poor IVF outcomes) all the way to an exaggerated response (associated with the potentially hazardous ovarian hyperstimulation syndrome (OHSS)). Furthermore, a relationship between the number of oocytes retrieved and pregnancy exists. Several studies have demonstrated that a response of between 9–13 or 6–15 oocytes is associated with the highest pregnancy or live birth rate (van der Gaast *et al.*, 2006; Sunkara *et al.*, 2011; Ji *et al.*, 2013).

Clinicians are interested in predicting the response to ovarian hyperstimulation. Recently two individual patient data meta-analyses have been published regarding poor and excessive response prediction. The

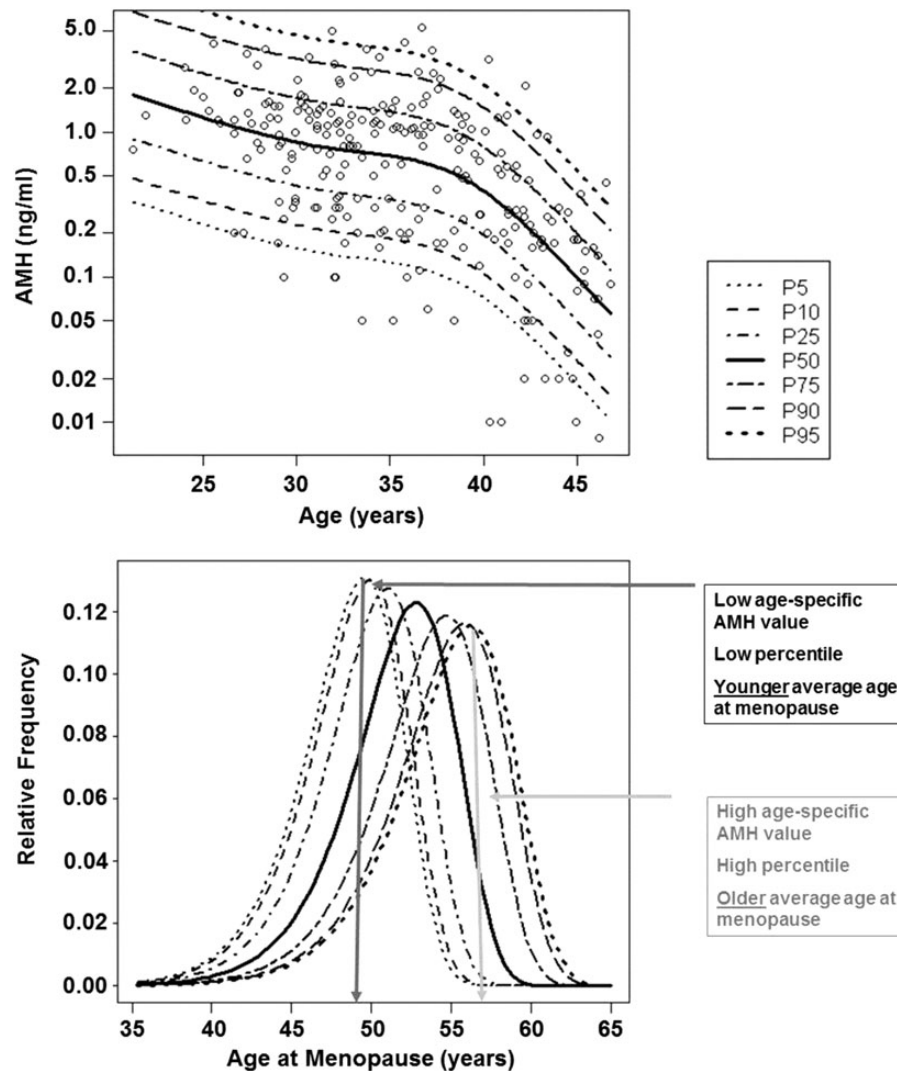


Figure 5 Nomogram for the relation between age-specific AMH concentrations and the distribution of age at menopause. AMH levels measured at entry to the study ($n = 257$, average age 35 years) (upper panel) and age at menopause assessed 11 years later (bottom panel), from Broer et al. (2011). (Lines represent the upper margins of the different percentiles of AMH.)

first IVF treatment cycle of 5705 women was analyzed, showing that AMH adds to age in predicting poor response. More importantly, a single test of AMH fully covers the prediction of poor response with an acceptable area under the receiver operating characteristic (ROC) curve of 0.78 (Broer et al., 2013b). Results of the first IVF treatment cycle of >4700 women were available for analysis of excessive response prediction and the same level of accuracy was demonstrated (Broer et al., 2013a). It can therefore be concluded that AMH is a useful predictor of ovarian response to ovarian hyperstimulation.

Changing gonadotrophin doses in the course of the ovarian stimulation treatment, often applied in poor responders, has failed to show a clinical benefit (van Hooff et al., 1993). The ability to assess ovarian responsiveness to FSH before the actual start of stimulation allowing adjustment of the initial doses for ovarian stimulation, is expected to improve the efficacy and safety of IVF treatment (Fauser et al., 2008b). Initial studies aiming to develop algorithms for individualized dosing applied patient characteristics

such as FSH, the AFC, ovarian volume and age. It could be demonstrated that daily doses of exogenous FSH varying between 37 and 225 IU may be used in individual cases to achieve a desired ovarian response (Fauser et al., 2008a). Others studies provided contradictory results. Two studies showed no effect of increasing the FSH dosage for expected poor responders (Klinkert et al., 2005; Lekamge et al., 2008), whereas decreasing the FSH dosage for expected excessive responders did show promising results (Olivennes et al., 2009). Only a single RCT has been performed, demonstrating that in the individual dosing group the incidence of a poor or excessive response was reduced (Popovic-Todorovic et al., 2003). A large RCT is necessary to validate these findings. Moreover, the cost-effectiveness of an individual approach to ovarian hyperstimulation has not been studied to date. Currently the multi-center OPTIMIST trial (registration nr: NTR2657) is being conducted in the Netherlands, investigating the effect of individualization of ovarian hyperstimulation and its cost-effectiveness (van Tilborg et al., 2012).

Only recently have algorithms been developed to individualize dosing for ovarian hyperstimulation based on initial AMH concentrations. These treatment strategies resulted in a reduction of both an excessive response and canceled cycles, reduced risk of OHSS, increased pregnancy and live birth rates, in addition to a reduction in costs (Nelson *et al.*, 2009; Yates *et al.*, 2011; La Marca *et al.*, 2012). A recent meta-analysis has summarized the current status of the available evidence supporting the use of individualized ovarian hyperstimulation (Fleming *et al.*, 2013; La Marca and Sunkara, 2013).

The ability of AMH to predict pregnancy chances is less promising. In an individual patient data meta-analysis it was clearly demonstrated that AMH does not add to the prediction of ongoing pregnancy in IVF (Broer *et al.*, 2013b). However, two recent studies, both in many hundreds of women undergoing IVF, did establish an association between AMH and cumulative live birth rates. It was demonstrated that women in the higher AMH categories have a higher ongoing pregnancy rate as well as a higher live birth rate (Arce *et al.*, 2013). This finding was confirmed in a larger prospective study of almost 900 women, where increasing AMH levels were associated with increasing live birth rates, which remained significant even after adjustments were made for age and oocyte yield (Brodin *et al.*, 2013). It has also been demonstrated that when female age and AMH are combined it is possible to make a distinction between couples with a good and poor prognosis (La Marca *et al.*, 2011).

Management of women with cancer

Childhood cancer treatment has improved dramatically resulting in current overall survival rates of over 90%. Therefore, the long-term implications of treatment, such as gonadal damage, and related infertility are gaining increasing attention. AMH could play a role in several aspects of cancer treatment and outcome. First, AMH appears to facilitate establishing which chemotherapeutic agents are particularly toxic to the ovaries (van Beek *et al.*, 2007; Brougham *et al.*, 2012).

Second, AMH may also be able to identify diminished ovarian reserve when ovulatory cycles are restored following cessation of cancer treatment. Typically, AMH levels drop during chemotherapy with some recovery 3–6 months thereafter. Radiation cancer therapy is known to be particularly toxic to ovaries. AMH, both before and after treatment, may be useful in the management of young women diagnosed with cancer, since many women are concerned about their future fertility potential (Anderson and Cameron, 2011; Dillon *et al.*, 2013) and fertility preservation may be considered. Recently a small study emerged showing that also in adolescents (age <18 years) treated for cancer AMH is a marker of ovarian function (Krawczuk-Rybak *et al.*, 2013).

Moreover, the real value of measuring AMH levels in young women surviving cancer would be to forecast the long-term reproductive outcome. A first study looking into this matter has emerged. A 10-year re-follow-up study of childhood cancer survivors now in their mid-thirties showed a decrease in AMH level according to the gonadotoxic effect of the treatment in their childhood. In general the percentage of childless women in this group was higher than in the normal Danish population and, especially in the group of women who received the maximum gonadotoxic treatment, the pregnancy rate and outcome was very poor (Nielsen *et al.*, 2013). However, whether AMH could play a role in forecasting reproductive outcome in these women has yet to be established.

In the context of gonadotoxic cancer treatment ovarian tissue can be cryopreserved. Although resumption of ovarian function and

subsequent pregnancies have been reported following the orthotopic transplantation of ovarian tissue, AMH levels are undetectable in the great majority of women (Janse *et al.*, 2011; Andersen *et al.*, 2012). It remains to be elucidated whether undetectable AMH under those circumstances is due to accelerated follicle loss during thawing of cryopreserved ovarian tissue, poor vascularization of transplanted ovarian material or other causes.

In women with breast cancer it was demonstrated recently that pretreatment AMH levels are a useful predictor of the long-term post-chemotherapy loss of ovarian function, adding significantly to the only other established individual predictor, which is age. The area under the curve for predicting amenorrhea at 2 years post-chemotherapy was 0.90. Therefore pretreatment AMH measurements may aid in decision-making regarding treatment options and the need for applying fertility preservation procedures (Anderson and Wallace, 2013; Anderson *et al.*, 2013).

For patients with hormone-sensitive breast cancer, knowledge of the precise time point by which the ovarian reserve is depleted is of great importance for the decision regarding the optimal adjuvant hormonal treatment. Unfortunately, the currently available measures to determine the post-menopausal status, such as FSH, are of limited value. Recently it has been proposed to use AMH under those circumstances. A practical guideline based on the currently existing scientific evidence using AMH as a marker has been proposed and research to validate this guideline is underway (De Vos *et al.*, 2012).

Finally, as ovarian granulosa cells secrete AMH, serum AMH levels may be used in diagnosis and follow-up of ovarian granulosa cell tumors. AMH performance for diagnosing a granulosa cell tumor seems very good with a sensitivity ranging between 76 and 93%. Post-operatively it may be used as a marker for the efficacy of surgery and for disease recurrence. One study followed 31 patients post-operatively for 7 years and demonstrated AMH as a useful tool in diagnosing recurrence of disease. This was confirmed in a second report on 56 patients, of whom 36 were followed post-operatively (Lane *et al.*, 1999; Long *et al.*, 2000; La Marca and Volpe, 2007).

In conclusion, multiple small single-center studies have been performed regarding AMH in young women surviving childhood cancer or women treated for (breast) cancer later in life. They all show promising results for AMH, but more research is needed to confirm these findings and assess the clinical utility.

Novel indications for ovarian reserve testing

A diminished ovarian reserve has been disclosed in a variety of clinical conditions. Women who were born small for gestational age (Sir-Petermann *et al.*, 2010), women with type 1 diabetes mellitus (Soto *et al.*, 2009), women suffering from the auto-immune disease lupus erythematosus (Lawrenz *et al.*, 2011), women having undergone ovarian surgery (chiefly cystectomy in women with endometriosis) (Raffi *et al.*, 2012) or uterine artery embolization for fibroids (Berkane and Moutafoff-Borie, 2010), all may be at risk of various degrees of reduced ovarian reserve. The recent observation of reduced AMH levels and a significantly earlier age of natural menopause in BRCA1/2 mutation carriers (Titus *et al.*, 2013) further underlines the potential significance of ovarian reserve testing in these specific groups. Finally, both fecundity data along with decreased AMH levels suggest accelerated ovarian aging in tall women who were treated with high-dose estrogens during puberty to reduce adult height (Hendriks *et al.*, 2011, 2012).

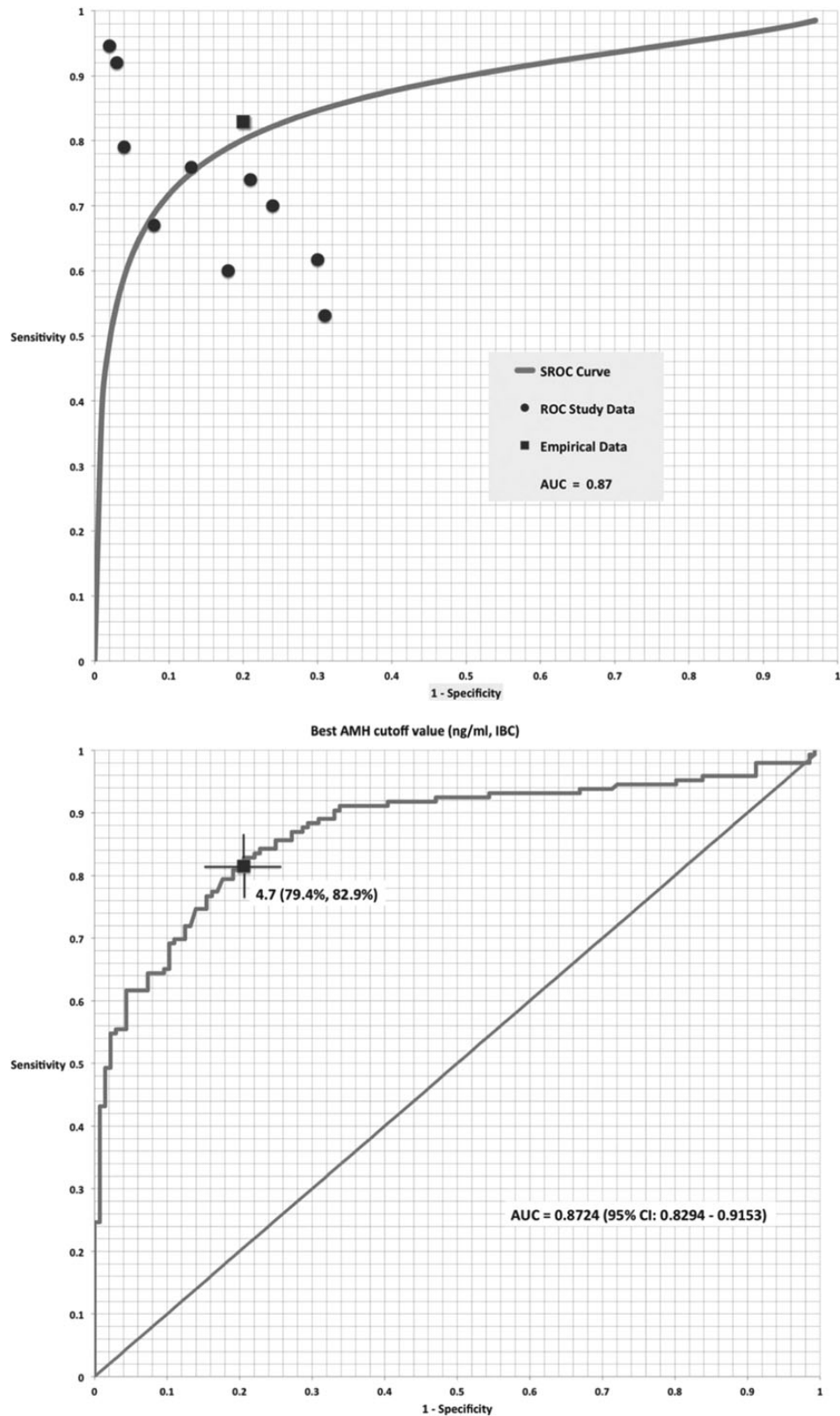


Figure 6 AMH in the diagnosis of polycystic ovary syndrome (PCOS). Top panel: the summary receiver operating characteristic (ROC) curve, reported sensitivity and specificity values of the ten included studies (circles), and the sensitivity and specificity values for the individual patient data aggregation meta-analysis (squares). Bottom panel: ROC curve, optimal cut-off value and area under the curve (AUC) for the individual patient data aggregation meta-analysis. From [Iliodromiti et al. \(2013\)](#).

Besides the use of predicting age at menopause for the association with the preceding decrease in natural fecundity, predicting menopausal age may also have implications for female health in general. Age of menopause is known to be related to many general health issues, such as osteoporosis, breast cancer, cognition and Alzheimer disease, cardiovascular disease and stroke (De Vos *et al.*, 2010). The ability to predict age at menopause by assessing AMH at a relatively young age may enable the design of screening and prevention programs according to the risk profile of the individual woman. Indeed, a relationship between AMH and subsequent atherosclerosis risk has recently been described for the first time in a monkey model (Appt *et al.*, 2012).

Ovarian dysfunction

Women with presumed ovarian dysfunction presenting with oligomenorrhea or amenorrhea are classified based on serum FSH and E₂ concentrations. This classification was developed more than half a century ago and was subsequently adopted by the World Health Organization (WHO). In brief, a distinction can be made between either a central (hypothalamic-pituitary unit) origin of ovarian dysfunction (WHO group 1, characterized by low FSH and low E₂ levels), abnormalities residing within the ovary itself (WHO group 3; high FSH, low E₂), or a pituitary-ovarian 'imbalance' (WHO group 2; normal FSH and E₂). The latter condition (WHO group 2), mainly involving polycystic ovary syndrome (PCOS), is observed in ~80% of cases of oligo/amenorrhea. As described earlier, AMH is exclusively produced by pre-antral and early antral follicles independent from FSH. Assessing AMH concentrations in anovulatory women may therefore provide useful additional information concerning early follicle dynamics along with ovarian reserve.

PCOS

Women diagnosed with PCOS often present with oligo/anovulation, hyperandrogenism and characteristic ovarian features. Polycystic ovarian morphology (PCOM) as assessed by transvaginal ultrasound is one of the three criteria for PCOS diagnosis. Ovarian dysfunction in women with PCOS is characterized by follicle maturation arrest and disturbed dominant follicle selection. Accordingly, 2–3 fold increased serum AMH concentrations have been reported in PCOS, directly reflecting the increased number of early antral follicles. Increasing evidence suggests that AMH levels may replace PCOM assessment (Dewailly *et al.*, 2011, 2013; Eilertsen *et al.*, 2012), but it has also been suggested that AMH can replace features of hyperandrogenism or anovulation (Casadei *et al.*, 2013). Recently a systematic review and meta-analysis was performed regarding the capacity of AMH to diagnose PCOS. Ten studies could be included in the meta-analysis and a summary ROC curve was constructed. Using a cut-off level of 4.7 ng/ml, AMH has a sensitivity and specificity of 82.8 and 79.4%, respectively. The AUC was 0.87, which was identical to the summary ROC curve of the 10 studies (Fig. 6) (Iliodromiti *et al.*, 2013).

Moreover, the magnitude of AMH elevations in PCOS is associated with the extent of disease (Laven *et al.*, 2004; Piouka *et al.*, 2009a), improved reproductive performance in relation to weight loss (Thomson *et al.*, 2009), and improved ovulatory function with age (Carmina *et al.*, 2012). Moreover, ovarian response to infertility treatment by laparoscopic ovarian diathermy (Elmashad, 2011) may be predicted by initial AMH levels. AMH is also elevated in prepubertal and

adolescent girls with PCOS (Villaruel *et al.*, 2011) and in daughters of mothers with PCOS (Crisosto *et al.*, 2007). Hence, AMH testing may allow the early detection of subclinical disease in siblings of women diagnosed with PCOS.

The observed decline of AMH with increasing age in PCOS appears to be significantly less pronounced compared with normal controls (Mulders *et al.*, 2004). Retarded ovarian aging and a delayed age of menopause has therefore been proposed in PCOS. This hypothesis, however, remains to be further substantiated (Mulders *et al.*, 2004; Piltonen *et al.*, 2005; Tehrani *et al.*, 2010).

Other forms of anovulation

Women presenting with functional hypothalamic amenorrhea were shown to have normal AMH levels suggesting a normal size of the cohort of early growing follicles (Luisi *et al.*, 2012). Accordingly, initial AMH levels predict chances for recovery of ovarian function following weight gain in women with anorexia nervosa (van Elburg *et al.*, 2007). However, a case report has been published in which a woman with a hypothalamic amenorrhea initially presented with low AMH levels which increased after stimulation with gonadotrophins (Tran *et al.*, 2011).

In contrast, AMH levels are undetectable in the great majority of women diagnosed with primary ovarian insufficiency (POI) (WHO group 3) suggesting premature follicle pool exhaustion (Knauff *et al.*, 2009). Moreover, AMH may provide useful information regarding the extent of follicle pool depletion in various POI-like conditions, such as incipient ovarian failure (Knauff *et al.*, 2009), ovarian failure due to autoimmunity (La Marca *et al.*, 2009) or FSH receptor loss of function mutation (Kallio *et al.*, 2012). In this context, it should be noted that current criteria used to define POI (such as FSH concentrations >40 IU/L) are not based on sound scientific evidence.

Women with (mosaic) Turner syndrome are destined to develop POI at an early age. AMH has been found to be higher in women with Turner syndrome who do achieve puberty (Visser *et al.*, 2013), and in girls with karyotypes associated with a fair probability of fertility (Purushothaman *et al.*, 2010). Moreover, in the case of fertility preservation in women with Turner syndrome, AMH represents one of the predictors of the presence of follicles in biopsied ovarian tissue (Borgstrom *et al.*, 2009). Further studies have to be undertaken to assess whether AMH measured at a young age could aid in the decision-making regarding future attempts at fertility preservation.

Conclusion

AMH serum concentration accurately reflects the size of the pool of antral follicles, representing the quantity of the remaining primordial follicles. Accordingly, AMH levels may vary significantly in women of the same chronological age. AMH is the best currently available measure of the ovarian reserve in several clinical conditions. In IVF it can be used to predict outcome measures, most importantly the ovarian response, and may also aid in the individualization of dosing for ovarian hyperstimulation. However, prospective well powered studies comparing different infertility treatment strategies based on initial AMH levels using appropriate end-points, such as live birth and cost-effectiveness, are urgently awaited. Moreover, AMH has a role in forecasting reproductive lifespan, ovarian dysfunction (especially PCOS) and the impact

of gonadotoxic cancer treatment or ovarian surgery. However, concerns regarding the performance of AMH assay under different conditions indicate an urgent need for an international guideline regarding the storage of samples and handling techniques for the AMH assay, to allow the comparison of test results between laboratories.

Authors' roles

All authors contributed to writing and critically reviewing the manuscript.

Funding

No specific funding was received for preparing this review.

Conflict of interest

S.L.B. has nothing to declare. F.J.M.B. is a member of the external advisory board for Merck Serono (The Netherlands) the advisory board Roche (Switzerland), performs consultancy work for Gedeon Richter (Belgium), for MSD (The Netherlands), and is involved in educational activities for Ferring BV (The Netherlands) and for MSD (The Netherlands). J.S.E.L. received unrestricted research grants from the following companies (in alphabetical order): Ferring, Genovum, Merck-Serono, Merck Sharp and Dome (MSD), Organon, Shering-Plough, and Serono. B.C.J.M.F. has received fees and grant support from the following companies (in alphabetic order): Andromed, Ardana, COGI, Euroscreen, Ferring, Genovum, Gedeon-Richter, Merck Serono, MSD, Organon, Ova Science, Panthare Bioscience, PregLem, Roche, Schering, Schering Plough, Serono, Uteron, Watson laboratories and Wyeth.

References

- Abduljabbar M, Taheini K, Picard JY, Cate RL, Josso N. Mutations of the AMH type II receptor in two extended families with persistent Mullerian duct syndrome: lack of phenotype/genotype correlation. *Horm Res Paediatr* 2012;**77**:291–297.
- Al Qahtani A, Muttukrishna S, Appasamy M, Johns J, Cranfield M, Visser JA, Themmen AP, Groome NP. Development of a sensitive enzyme immunoassay for anti-Mullerian hormone and the evaluation of potential clinical applications in males and females. *Clin Endocrinol (Oxf)* 2005;**63**:267–273.
- Andersen CY, Kristensen SG, Greve T, Schmidt KT. Cryopreservation of ovarian tissue for fertility preservation in young female oncological patients. *Future Oncol* 2012;**8**:595–608.
- Anderson RA, Cameron DA. Pretreatment serum anti-mullerian hormone predicts long-term ovarian function and bone mass after chemotherapy for early breast cancer. *J Clin Endocrinol Metab* 2011;**96**:1336–1343.
- Anderson RA, Wallace WH. Antimullerian hormone, the assessment of the ovarian reserve, and the reproductive outcome of the young patient with cancer. *Fertil Steril* 2013;**99**:1469–1475.
- Anderson RA, Hindmarsh PC, Wallace WH. Induction of puberty by autograft of cryopreserved ovarian tissue in a patient previously treated for Ewing sarcoma. *Eur J Cancer* 2013;**49**:2960–2961.
- Appt SE, Chen H, Clarkson TB, Kaplan JR. Premenopausal antimullerian hormone concentration is associated with subsequent atherosclerosis. *Menopause* 2012;**19**:1353–1359.
- Arbo E, Vetori DV, Jimenez MF, Freitas FM, Lemos N, Cunha-Filho JS. Serum anti-mullerian hormone levels and follicular cohort characteristics after pituitary suppression in the late luteal phase with oral contraceptive pills. *Hum Reprod* 2007;**22**:3192–3196.
- Arce JC, La MA, Mirner KB, Nyboe AA, Fleming R. Antimullerian hormone in gonadotropin releasing-hormone antagonist cycles: prediction of ovarian response and cumulative treatment outcome in good-prognosis patients. *Fertil Steril* 2013;**99**:1644–1653.
- Belville C, Marechal JD, Penetier S, Carmillo P, Masgrau L, Messika-Zeitoun L, Galey J, Machado G, Treton D, Gonzales J et al. Natural mutations of the anti-Mullerian hormone type II receptor found in persistent Mullerian duct syndrome affect ligand binding, signal transduction and cellular transport. *Hum Mol Genet* 2009;**18**:3002–3013.
- Bentzen JG, Forman JL, Johannsen TH, Pinborg A, Larsen EC, Andersen AN. Ovarian antral follicle subclasses and anti-mullerian hormone during normal reproductive aging. *J Clin Endocrinol Metab* 2013;**98**:1602–1611.
- Berkane N, Moutafoff-Borie C. Impact of previous uterine artery embolization on fertility. *Curr Opin Obstet Gynecol* 2010;**22**:242–247.
- Borgstrom B, Hreinsson J, Rasmussen C, Sheikh M, Fried G, Keros V, Fridstrom M, Hovatta O. Fertility preservation in girls with turner syndrome: prognostic signs of the presence of ovarian follicles. *J Clin Endocrinol Metab* 2009;**94**:74–80.
- Brodin T, Hadziosmanovic N, Berglund L, Olovsson M, Holte J. Antimullerian hormone levels are strongly associated with live-birth rates after assisted reproduction. *J Clin Endocrinol Metab* 2013;**98**:1107–1114.
- Broekmans FJ, Soules MR, Fauser BC. Ovarian aging: mechanisms and clinical consequences. *Endocr Rev* 2009;**30**:465–493.
- Broer SL, Eijkemans MJ, Scheffer GJ, van R I, de VA, Themmen AP, Laven JS, de Jong FH, te Velde ER, Fauser BC et al. Anti-mullerian hormone predicts menopause: a long-term follow-up study in normoovulatory women. *J Clin Endocrinol Metab* 2011;**96**:2532–2539.
- Broer SL, Dolleman M, van DJ, Broeze KA, Opmeer BC, Bossuyt PM, Eijkemans MJ, Mol BW, Broekmans FJ. Prediction of an excessive response in in vitro fertilization from patient characteristics and ovarian reserve tests and comparison in subgroups: an individual patient data meta-analysis. *Fertil Steril* 2013a;**100**:420–429.
- Broer SL, van DJ, Broeze KA, Dolleman M, Opmeer BC, Bossuyt P, Eijkemans MJ, Mol BW, Broekmans FJ. Added value of ovarian reserve testing on patient characteristics in the prediction of ovarian response and ongoing pregnancy: an individual patient data approach. *Hum Reprod Update* 2013b;**19**:26–36.
- Brougham MF, Crofton PM, Johnson EJ, Evans N, Anderson RA, Wallace WH. Anti-Mullerian hormone is a marker of gonadotoxicity in pre- and postpubertal girls treated for cancer: a prospective study. *J Clin Endocrinol Metab* 2012;**97**:2059–2067.
- Buyuk E, Seifer DB, Illions E, Grazi RV, Lieman H. Elevated body mass index is associated with lower serum anti-mullerian hormone levels in infertile women with diminished ovarian reserve but not with normal ovarian reserve. *Fertil Steril* 2011;**95**:2364–2368.
- Buzi F, Pilotta A, Dordoni D, Lombardi A, Zaglio S, Adlard P. Pelvic ultrasonography in normal girls and in girls with pubertal precocity. *Acta Paediatr* 1998;**87**:1138–1145.
- Carmina E, Campagna AM, Mansuet P, Vitale G, Kort D, Lobo R. Does the level of serum antimullerian hormone predict ovulatory function in women with polycystic ovary syndrome with aging? *Fertil Steril* 2012;**98**:1043–1046.
- Casadei L, Madrigale A, Puca F, Manicuci C, Emidi E, Piccione E, Dewailly D. The role of serum anti-Mullerian hormone (AMH) in the hormonal diagnosis of polycystic ovary syndrome. *Gynecol Endocrinol* 2013;**29**:545–550.
- Crisosto N, Codner E, Maliqueo M, Echiburru B, Sanchez F, Cassorla F, Sir-Petermann T. Anti-Mullerian hormone levels in peripubertal daughters of women with polycystic ovary syndrome. *J Clin Endocrinol Metab* 2007;**92**:2739–2743.
- Deb S, Campbell BK, Pincott-Allen C, Clewes JS, Cumberpatch G, Raine-Fenning NJ. Quantifying effect of combined oral contraceptive pill on functional ovarian reserve as measured by serum anti-Mullerian hormone and small antral follicle count using three-dimensional ultrasound. *Ultrasound Obstet Gynecol* 2012;**39**:574–580.
- Dennis NA, Houghton LA, Jones GT, van Rij AM, Morgan K, McLennan IS. The level of serum anti-Mullerian hormone correlates with vitamin D status in men and women but not in boys. *J Clin Endocrinol Metab* 2012;**97**:2450–2455.
- de Vet A, Laven JSE, de Jong FH, Themmen A, Fauser BCJM. Anti-Mullerian Hormone serum levels: A putative marker for ovarian aging. *Fertil Steril* 2002;**77**:357–362.
- De Vos M, Devroey P, Fauser BC. Primary ovarian insufficiency. *Lancet* 2010;**376**:911–921.
- De Vos FY, van Laarhoven HW, Laven JS, Themmen AP, Beex LV, Sweep CG, Seynaeve C, Jager A. Menopausal status and adjuvant hormonal therapy for breast cancer patients: a practical guideline. *Crit Rev Oncol Hematol* 2012;**84**:252–260.
- Dewailly D, Gronier H, Poncelet E, Robin G, Leroy M, Pigny P, Duhamel A, Catteau-Jonard S. Diagnosis of polycystic ovary syndrome (PCOS): revisiting the threshold values of follicle count on ultrasound and of the serum AMH level for the definition of polycystic ovaries. *Hum Reprod* 2011;**26**:3123–3129.

- Dewailly D, Lujan ME, Carmina E, Cedars MI, Laven J, Norman RJ, Escobar Morreale HF. Definition and significance of polycystic ovarian morphology: a task force report from the Androgen Excess and Polycystic Ovary Syndrome Society. *Hum Reprod Update* 2014;**20**:334–352.
- Dillon KE, Sammel MD, Prewitt M, Ginsberg JP, Walker D, Mersereau JE, Gosiengfiao Y, Gracia CR. Pretreatment antimüllerian hormone levels determine rate of posttherapy ovarian reserve recovery: acute changes in ovarian reserve during and after chemotherapy. *Fertil Steril* 2013;**99**:477–483.
- Dolleman M, Faddy MJ, van DJ, van der Schouw YT, Messow CM, Leader B, Peeters PH, McConnachie A, Nelson SM, Broekmans FJ. The relationship between anti-Müllerian hormone in women receiving fertility assessments and age at menopause in subfertile women: evidence from large population studies. *J Clin Endocrinol Metab* 2013a;**98**:1946–1953.
- Dolleman M, Verschuren WM, Eijkemans MJ, Dolle ME, Jansen EH, Broekmans FJ, van der Schouw YT. Reproductive and lifestyle determinants of anti-Müllerian hormone in a large population-based study. *J Clin Endocrinol Metab* 2013b;**98**:2106–2115.
- Durlinger AL, Kramer P, Karels B, de Jong FH, Uilenbroek JT, Grootegoed JA, Themmen AP. Control of primordial follicle recruitment by anti-Müllerian hormone in the mouse ovary. *Endocrinology* 1999;**140**:5789–5796.
- Durlinger AL, Gruiters MJ, Kramer P, Karels B, Kumar TR, Matzuk MM, Rose UM, de Jong FH, Uilenbroek JT, Grootegoed JA *et al*. Anti-müllerian hormone attenuates the effects of FSH on follicle development in the mouse ovary. *Endocrinology* 2001;**142**:4891–4899.
- Eilertsen TB, Vanky E, Carlsen SM. Anti-Müllerian hormone in the diagnosis of polycystic ovary syndrome: can morphologic description be replaced? *Hum Reprod* 2012;**27**:2494–2502.
- Elmashad AI. Impact of laparoscopic ovarian drilling on anti-Müllerian hormone levels and ovarian stromal blood flow using three-dimensional power Doppler in women with anovulatory polycystic ovary syndrome. *Fertil Steril* 2011;**95**:2342–6, 2346.
- Fanchin R, Schonauer LM, Righini C, Frydman N, Frydman R, Taieb J. Serum anti-Müllerian hormone dynamics during controlled ovarian hyperstimulation. *Hum Reprod* 2003;**18**:328–332.
- Fausser BC, Van Heusden AM. Manipulation of human ovarian function: physiological concepts and clinical consequences. *Endocr Rev* 1997;**18**:71–106.
- Fausser BC, Diedrich K, Devroey P. Predictors of ovarian response: progress towards individualized treatment in ovulation induction and ovarian stimulation. *Hum Reprod Update* 2008a;**14**:1–14.
- Fausser BC, Diedrich K, Devroey P. Predictors of ovarian response: progress towards individualized treatment in ovulation induction and ovarian stimulation. *Hum Reprod Update* 2008b;**14**:1–14.
- Fleming R, Nelson SM. Reproducibility of AMH. *Hum Reprod* 2012;**27**:3639–3641.
- Fleming R, Broekmans F, Calhaz-Jorge C, Dracea L, Alexander H, Nyboe AA, Blockeel C, Jenkins J, Lunenfeld B, Platteau P *et al*. Can anti-Müllerian hormone concentrations be used to determine gonadotrophin dose and treatment protocol for ovarian stimulation? *Reprod Biomed Online* 2013;**26**:431–439.
- Freeman EV, Gracia CR, Sammel MD, Lin H, Lim LC, Strauss JF III. Association of anti-müllerian hormone levels with obesity in late reproductive-age women. *Fertil Steril* 2007;**87**:101–106.
- Freeman EV, Sammel MD, Lin H, Gracia CR. Anti-müllerian hormone as a predictor of time to menopause in late reproductive age women. *J Clin Endocrinol Metab* 2012;**97**:1673–1680.
- Freour T, Mirallie S, Bach-Ngohou K, Denis M, Barriere P, Masson D. Measurement of serum anti-Müllerian hormone by Beckman Coulter ELISA and DSL ELISA: comparison and relevance in assisted reproduction technology (ART). *Clin Chim Acta* 2007;**375**:162–164.
- Gougeon A. Caracteres qualitatifs et quantitatifs de la population folliculaire dans l'ovaire humaine adulte. *Contracept Fertil Sex* 1984;**12**:527–535.
- Hagen CP, Akslae L, Sorensen K, Main KM, Boas M, Cleemann L, Holm K, Gravholt CH, Andersson AM, Pedersen AT *et al*. Serum levels of anti-Müllerian hormone as a marker of ovarian function in 926 healthy females from birth to adulthood and in 172 Turner syndrome patients. *J Clin Endocrinol Metab* 2010;**95**:5003–5010.
- Hagen CP, Sorensen K, Anderson RA, Juul A. Serum levels of antimüllerian hormone in early maturing girls before, during, and after suppression with GnRH agonist. *Fertil Steril* 2012a;**98**:1326–1330.
- Hagen CP, Vestergaard S, Juul A, Skakkebaek NE, Andersson AM, Main KM, Hjøllund NH, Ernst E, Bonde JP, Anderson RA *et al*. Low concentration of circulating antimüllerian hormone is not predictive of reduced fecundability in young healthy women: a prospective cohort study. *Fertil Steril* 2012b;**98**:1602–1608.
- Hansen KR, Hodnett GM, Knowlton N, Craig LB. Correlation of ovarian reserve tests with histologically determined primordial follicle number. *Fertil Steril* 2011;**95**:170–175.
- Hehenkamp WJ, Looman CW, Themmen AP, de Jong FH, te Velde ER, Broekmans FJ. Anti-Müllerian hormone levels in the spontaneous menstrual cycle do not show substantial fluctuation. *J Clin Endocrinol Metab* 2006;**91**:4057–4063.
- Hendriks AE, Laven JS, Valkenburg O, Fong SL, Fausser BC, de Ridder MA, de Jong FH, Visser JA, van Ginneken AM, Boot AM *et al*. Fertility and ovarian function in high-dose estrogen-treated tall women. *J Clin Endocrinol Metab* 2011;**96**:1098–1105.
- Hendriks AE, Drop SL, Laven JS, Boot AM. Fertility of tall girls treated with high-dose estrogen, a dose-response relationship. *J Clin Endocrinol Metab* 2012;**97**:3107–3114.
- Hudson PL, Douglas I, Donahoe PK, Cate RL, Epstein J, Pepinsky RB, MacLaughlin DT. An immunoassay to detect human müllerian inhibiting substance in males and females during normal development. *J Clin Endocrinol Metab* 1990;**70**:16–22.
- Hutson J, Ikawa H, Donahoe PK. The ontogeny of Müllerian inhibiting substance in the gonads of the chicken. *J Pediatr Surg* 1981;**16**:822–827.
- Iliodromiti S, Kelsey TW, Anderson RA, Nelson SM. Can anti-müllerian hormone predict the diagnosis of polycystic ovary syndrome? A systematic review and meta-analysis of extracted data. *J Clin Endocrinol Metab* 2013;**98**:3332–3340.
- Janse F, Donnez J, Anckaert E, de Jong FH, Fausser BC, Dolmans MM. Limited value of ovarian function markers following orthotopic transplantation of ovarian tissue after gonadotoxic treatment. *J Clin Endocrinol Metab* 2011;**96**:1136–1144.
- Jeppesen JV, Anderson RA, Kelsey TW, Christiansen SL, Kristensen SG, Jayaprakasan K, Raine-Fenning N, Campbell BK, Yding AC. Which follicles make the most anti-Müllerian hormone in humans? Evidence for an abrupt decline in AMH production at the time of follicle selection. *Mol Hum Reprod* 2013;**19**:519–527.
- Ji J, Liu Y, Tong XH, Luo L, Ma J, Chen Z. The optimum number of oocytes in IVF treatment: an analysis of 2455 cycles in China. *Hum Reprod* 2013;**28**:2728–2734.
- Josso N, Legeai L, Forest MG, Chaussain JL, Brauner R. An enzyme linked immunoassay for anti-müllerian hormone: a new tool for the evaluation of testicular function in infants and children. *J Clin Endocrinol Metab* 1990;**70**:23–27.
- Josso N, Belleville C, di CN, Picard JY. AMH and AMH receptor defects in persistent Müllerian duct syndrome. *Hum Reprod Update* 2005;**11**:351–356.
- Kallio S, Aittomäki K, Piltonen T, Veijola R, Liakka A, Vaskivuo TE, Dunkel L, Tapanainen JS. Anti-Müllerian hormone as a predictor of follicular reserve in ovarian insufficiency: special emphasis on FSH-resistant ovaries. *Hum Reprod* 2012;**27**:854–860.
- Kelsey TW, Wright P, Nelson SM, Anderson RA, Wallace WH. A validated model of serum anti-müllerian hormone from conception to menopause. *PLoS One* 2011;**6**:e22024.
- Kevenaar ME, Themmen AP, Rivadeneira F, Uitterlinden AG, Laven JS, van Schoor NM, Lips P, Pols HA, Visser JA. A polymorphism in the AMH type II receptor gene is associated with age at menopause in interaction with parity. *Hum Reprod* 2007;**22**:2382–2388.
- Klinkert ER, Broekmans FJ, Looman CW, Habbema JD, te Velde ER. Expected poor responders on the basis of an antral follicle count do not benefit from a higher starting dose of gonadotrophins in IVF treatment: a randomized controlled trial. *Hum Reprod* 2005;**20**:611–615.
- Knauff EA, Eijkemans MJ, Lambalk CB, Ten Kate-Booij MJ, Hoek A, Beerendonk CC, Laven JS, Goverde AJ, Broekmans FJ, Themmen AP *et al*. Anti-Müllerian hormone, inhibin B, and antral follicle count in young women with ovarian failure. *J Clin Endocrinol Metab* 2009;**94**:786–792.
- Krawczuk-Rybak M, Leszczynska E, Poznanska M, Zelazowska-Rutkowska B, Wysocka J. Anti-müllerian hormone as a sensitive marker of ovarian function in young cancer survivors. *Int J Endocrinol* 2013;**2013**:125080.
- Kristensen SL, Ramlau-Hansen CH, Andersen CY, Ernst E, Olsen SF, Bonde JP, Vested A, Toft G. The association between circulating levels of antimüllerian hormone and follicle number, androgens, and menstrual cycle characteristics in young women. *Fertil Steril* 2012;**97**:779–785.
- Kumar A, Kalra B, Patel A, McDavid L, Roudebush WE. Development of a second generation anti-Müllerian hormone (AMH) ELISA. *J Immunol Methods* 2010;**362**:51–59.
- La Marca A, Sunkara SK. Individualization of controlled ovarian stimulation in IVF using ovarian reserve markers: from theory to practice. *Hum Reprod Update* 2014;**20**:124–140.

- La Marca A, Volpe A. The Anti-Mullerian hormone and ovarian cancer. *Hum Reprod Update* 2007;**13**:265–273.
- La Marca A, Marzotti S, Brozzetti A, Stabile G, Arsenio AC, Bini V, Giordano R, De BA, Volpe A, Falorni A. Primary ovarian insufficiency due to steroidogenic cell autoimmunity is associated with a preserved pool of functioning follicles. *J Clin Endocrinol Metab* 2009;**94**:3816–3823.
- La Marca A, Nelson SM, Sighinolfi G, Manno M, Baraldi E, Rolli L, Xella S, Marsella T, Tagliasacchi D, D'Amico R et al. Anti-Mullerian hormone-based prediction model for a live birth in assisted reproduction. *Reprod Biomed Online* 2011;**4**:341–349.
- La Marca A, Papaleo E, Grisendi V, Argento C, Giulini S, Volpe A. Development of a nomogram based on markers of ovarian reserve for the individualisation of the follicle-stimulating hormone starting dose in in vitro fertilisation cycles. *BJOG* 2012;**119**:1171–1179.
- La Marca A, Sighinolfi G, Papaleo E, Cagnacci A, Volpe A, Faddy MJ. Prediction of age at menopause from assessment of ovarian reserve may be improved by using body mass index and smoking status. *PLoS One* 2013;**8**:e57005.
- Lane AH, Lee MM, Fuller AF Jr, Kehas DJ, Donahoe PK, MacLaughlin DT. Diagnostic utility of Mullerian inhibiting substance determination in patients with primary and recurrent granulosa cell tumors. *Gynecol Oncol* 1999;**73**:51–55.
- Laven JS, Mulders AG, Visser JA, Themmen AP, de Jong FH, Fauser BC. Anti-Mullerian hormone serum concentrations in normoovulatory and anovulatory women of reproductive age. *J Clin Endocrinol Metab* 2004;**89**:318–323.
- Lawrenz B, Henes J, Henes M, Neunhoffer E, Schmalzing M, Fehm T, Kitter I. Impact of systemic lupus erythematosus on ovarian reserve in premenopausal women: evaluation by using anti-Müllerian hormone. *Lupus* 2011;**20**:1193–1197.
- Leader B, Hegde A, Baca Q, Stone K, Lannon B, Seifer DB, Broekmans F, Baker VL. High frequency of discordance between antimullerian hormone and follicle-stimulating hormone levels in serum from estradiol-confirmed days 2 to 4 of the menstrual cycle from 5,354 women in U.S. fertility centers. *Fertil Steril* 2012;**98**:1037–1042.
- Lebeurrier N, Launay S, Macrez R, Maubert E, Legros H, Leclerc A, Jamin SP, Picard JY, Marret S, Laudenbach V et al. Anti-Mullerian-hormone-dependent regulation of the brain serine-protease inhibitor neuroserpin. *J Cell Sci* 2008;**121**:3357–3365.
- Lee MM, Donahoe PK, Silverman BL, Hasegawa T, Hasegawa Y, Gustafson ML, Chang YC, MacLaughlin DT. Measurements of serum mullerian inhibiting substance in the evaluation of children with nonpalpable gonads. *N Engl J Med* 1997;**336**:1480–1486.
- Lekamge DN, Lane M, Gilchrist RB, Tremellen KP. Increased gonadotrophin stimulation does not improve IVF outcomes in patients with predicted poor ovarian reserve. *J Assist Reprod Genet* 2008;**25**:515–521.
- Li HW, Wong CY, Yeung WS, Ho PC, Ng EH. Serum anti-mullerian hormone level is not altered in women using hormonal contraceptives. *Contraception* 2011;**83**:582–585.
- Lie Fong S, Visser JA, Welt CK, de Rijke YB, Eijkemans MJ, Broekmans FJ, Roes EM, Peters WH, Hokken-Koelega AC, Fauser BC et al. Serum anti-mullerian hormone levels in healthy females: a nomogram ranging from infancy to adulthood. *J Clin Endocrinol Metab* 2012;**97**:4650–4655.
- Long WQ, Ranchin V, Pautier P, Belleville C, Denizot P, Cailla H, Lhomme C, Picard JY, Bidart JM, Rey R. Detection of minimal levels of serum anti-Mullerian hormone during follow-up of patients with ovarian granulosa cell tumor by means of a highly sensitive enzyme-linked immunosorbent assay. *J Clin Endocrinol Metab* 2000;**85**:540–544.
- Luisi S, Ciani V, Podfigurna-Stopa A, Lazzeri L, De PF, Meczekalski B, Petraglia F. Serum anti-Mullerian hormone, inhibin B, and total inhibin levels in women with hypothalamic amenorrhea and anorexia nervosa. *Gynecol Endocrinol* 2012;**28**:34–38.
- McGee EA, Hsueh AJ. Initial and cyclic recruitment of ovarian follicles. *Endocr Rev* 2000;**21**:200–214.
- Merhi ZO, Seifer DB, Weedon J, Adeyemi O, Holman S, Anastos K, Golub ET, Young M, Karim R, Greenblatt R et al. Circulating vitamin D correlates with serum antimullerian hormone levels in late-reproductive-aged women: Women's Interagency HIV Study. *Fertil Steril* 2012;**98**:228–234.
- Mulders AG, Laven JS, Eijkemans MJ, de Jong FH, Themmen AP, Fauser BC. Changes in anti-Mullerian hormone serum concentrations over time suggest delayed ovarian ageing in normogonadotrophic anovulatory infertility. *Hum Reprod* 2004;**19**:2036–2042.
- Nelson SM, La Marca A. The journey from the old to the new AMH assay: how to avoid getting lost in the values. *Reprod Biomed Online* 2011;**23**:411–420.
- Nelson SM, Yates RW, Lyall H, Jamieson M, Traynor I, Gaudoin M, Mitchell P, Ambrose P, Fleming R. Anti-Mullerian hormone-based approach to controlled ovarian stimulation for assisted conception. *Hum Reprod* 2009;**24**:867–875.
- Nelson SM, Messow MC, McConnachie A, Wallace H, Kelsey T, Fleming R, Anderson RA, Leader B. External validation of nomogram for the decline in serum anti-Mullerian hormone in women: a population study of 15,834 infertility patients. *Reprod Biomed Online* 2011a;**23**:204–206.
- Nelson SM, Messow MC, Wallace AM, Fleming R, McConnachie A. Nomogram for the decline in serum antimullerian hormone: a population study of 9,601 infertility patients. *Fertil Steril* 2011b;**95**:736–741.
- Nielsen SN, Andersen AN, Schmidt KT, Rechnitzer C, Schmiegelow K, Bentzen JG, Larsen EC. A 10-year follow up of reproductive function in women treated for childhood cancer. *Reprod Biomed Online* 2013;**27**:192–200.
- Olivennes F, Howles CM, Borini A, Germond M, Trew G, Wikland M, Zegers-Hochschild F, Saunders H, Alam V. Individualizing FSH dose for assisted reproduction using a novel algorithm: the CONSORT study. *Reprod Biomed Online* 2009;**18**:195–204.
- Overbeek A, Broekmans FJ, Hehenkamp WJ, Wijdeveld ME, van DJ, van Dulmen-den BE, Lambalk CB. Intra-cycle fluctuations of anti-Mullerian hormone in normal women with a regular cycle: a re-analysis. *Reprod Biomed Online* 2012;**24**:664–669.
- Piltonen T, Morin-Papunen L, Koivunen R, Perheentupa A, Ruokonen A, Tapanainen JS. Serum anti-Mullerian hormone levels remain high until late reproductive age and decrease during metformin therapy in women with polycystic ovary syndrome. *Hum Reprod* 2005;**20**:1820–1826.
- Piouka A, Farmakiotis D, Katsikis I, Macut D, Gerou S, Panidis D. Anti-Mullerian hormone levels reflect severity of PCOS but are negatively influenced by obesity: relationship with increased luteinizing hormone levels. *Am J Physiol Endocrinol Metab* 2009a;**296**:E238–E243.
- Piouka A, Farmakiotis D, Katsikis I, Macut D, Gerou S, Panidis D. Anti-Mullerian hormone levels reflect severity of PCOS but are negatively influenced by obesity: relationship with increased luteinizing hormone levels. *Am J Physiol Endocrinol Metab* 2009b;**296**:E238–E243.
- Popovic-Todorovic B, Loft A, Bredkjaer HE, Bangsboll S, Nielsen IK, Andersen AN. A prospective randomized clinical trial comparing an individual dose of recombinant FSH based on predictive factors versus a 'standard' dose of 150 IU/day in 'standard' patients undergoing IVF/ICSI treatment. *Hum Reprod* 2003;**18**:2275–2282.
- Practic Committee ASRM. Testing and interpreting measures of ovarian reserve: a committee opinion. *Fertil Steril* 2012;**98**:1407–1415.
- Purushothaman R, Lazareva O, Oktay K, Ten S. Markers of ovarian reserve in young girls with Turner's syndrome. *Fertil Steril* 2010;**94**:1557–1559.
- Raffi F, Metwally M, Amer S. The impact of excision of ovarian endometrioma on ovarian reserve: a systematic review and meta-analysis. *J Clin Endocrinol Metab* 2012;**97**:3146–3154.
- Rajpert-De Meys E, Jorgensen N, Graem N, Muller J, Cate RL, Skakkebaek NE. Expression of anti-Mullerian hormone during normal and pathological gonadal development: association with differentiation of Sertoli and granulosa cells. *J Clin Endocrinol Metab* 1999;**84**:3836–3844.
- Rustamov O, Smith A, Roberts SA, Yates AP, Fitzgerald C, Krishnan M, Nardo LG, Pemberton PW. Anti-Mullerian hormone: poor assay reproducibility in a large cohort of subjects suggests sample instability. *Hum Reprod* 2012;**27**:3085–3091.
- Salhi I, Cambon-Roques S, Lamarre I, Laune D, Molina F, Pugnieri M, Pourquier D, Gutowski M, Picard JY, Xavier F et al. The anti-Mullerian hormone type II receptor: insights into the binding domains recognized by a monoclonal antibody and the natural ligand. *Biochem J* 2004;**379**:785–793.
- Schipper I, Visser JA, Themmen AP, Laven JS. Limitations and pitfalls of antimullerian hormone measurements. *Fertil Steril* 2012;**98**:823–824.
- Schuh-Huerta SM, Johnson NA, Rosen MP, Sternfeld B, Cedars MI, Reijo Pera RA. Genetic variants and environmental factors associated with hormonal markers of ovarian reserve in Caucasian and African American women. *Hum Reprod* 2012;**27**:594–608.
- Segev DL, Ha TU, Tran TT, Kenneally M, Harkin P, Jung M, MacLaughlin DT, Donahoe PK, Maheswaran S. Mullerian inhibiting substance inhibits breast cancer cell growth through an NFkappa B-mediated pathway. *J Biol Chem* 2000;**275**:28371–28379.

- Seifer DB, Golub ET, Lambert-Messerlian G, Benning L, Anastos K, Watts DH, Cohen MH, Karim R, Young MA, Minkoff H *et al.* Variations in serum mullerian inhibiting substance between white, black, and Hispanic women. *Fertil Steril* 2009; **92**:1674–1678.
- Seifer DB, Baker VL, Leader B. Age-specific serum anti-Mullerian hormone values for 17,120 women presenting to fertility centers within the United States. *Fertil Steril* 2011; **95**:747–750.
- Shaw CM, Stanczyk FZ, Egleston BL, Kahle LL, Spittle CS, Godwin AK, Brinton LA, Dorgan JF. Serum antimullerian hormone in healthy premenopausal women. *Fertil Steril* 2011; **95**:2718–2721.
- Sir-Petermann T, Marquez L, Carcamo M, Hitschfeld C, Codner E, Maliqueo M, Echiburu B, Aranda P, Crisosto N, Cassorla F. Effects of birth weight on anti-mullerian hormone serum concentrations in infant girls. *J Clin Endocrinol Metab* 2010; **95**:903–910.
- Somunkiran A, Yavuz T, Yucel O, Ozdemir I. Anti-Mullerian hormone levels during hormonal contraception in women with polycystic ovary syndrome. *Eur J Obstet Gynecol Reprod Biol* 2007; **134**:196–201.
- Soto N, Iniguez G, Lopez P, Larenas G, Mujica V, Rey RA, Codner E. Anti-Mullerian hormone and inhibin B levels as markers of premature ovarian aging and transition to menopause in type I diabetes mellitus. *Hum Reprod* 2009; **24**:2838–2844.
- Steiner AZ, Stanczyk FZ, Patel S, Edelman A. Antimullerian hormone and obesity: insights in oral contraceptive users. *Contraception* 2010; **81**:245–248.
- Steiner AZ, Herring AH, Kesner JS, Meadows JW, Stanczyk FZ, Hoberman S, Baird DD. Antimullerian hormone as a predictor of natural fecundability in women aged 30–42 years. *Obstet Gynecol* 2011; **117**:798–804.
- Streuli I, Fraise T, Pillet C, Ibecheole V, Bischof P, de Ziegler D. Serum antimullerian hormone levels remain stable throughout the menstrual cycle and after oral or vaginal administration of synthetic sex steroids. *Fertil Steril* 2008; **90**:395–400.
- Su HI, Sammel MD, Freeman EW, Lin H, DeBlasis T, Gracia CR. Body size affects measures of ovarian reserve in late reproductive age women. *Menopause* 2008; **15**:857–861.
- Su HI, Maas K, Sluss P, Chang RJ, Hall JE, Joffe H. The impact of depot GnRH agonist on AMH levels in healthy reproductive-aged women. *J Clin Endocrinol Metab* 2013; **98**:E1961–6.
- Sunkara SK, Rittenberg V, Raine-Fenning N, Bhattacharya S, Zamora J, Coomarasamy A. Association between the number of eggs and live birth in IVF treatment: an analysis of 400 135 treatment cycles. *Hum Reprod* 2011; **26**:1768–1774.
- te Velde ER, Pearson PL. The variability of female reproductive ageing. *Hum Reprod Update* 2002; **8**:141–154.
- Tehrani FR, Soleymani-Dodaran M, Hedayati M, Azizi F. Is polycystic ovary syndrome an exception for reproductive aging? *Hum Reprod* 2010; **25**:1775–1781.
- Tehrani FR, Shakeri N, Soleymani-Dodaran M, Azizi F. Predicting age at menopause from serum antimullerian hormone concentration. *Menopause* 2011; **18**:766–770.
- Teixeira J, Maheswaran S, Donahoe PK. Mullerian inhibiting substance: an instructive developmental hormone with diagnostic and possible therapeutic applications. *Endocr Rev* 2001; **22**:657–674.
- Thomson RL, Buckley JD, Moran LJ, Noakes M, Clifton PM, Norman RJ, Brinkworth GD. The effect of weight loss on anti-Mullerian hormone levels in overweight and obese women with polycystic ovary syndrome and reproductive impairment. *Hum Reprod* 2009; **24**:1976–1981.
- Titus S, Li F, Stobezki R, Akula K, Unsal E, Jeong K, Dickler M, Robson M, Moy F, Goswami S *et al.* Impairment of BRCA1-related DNA double-strand break repair leads to ovarian aging in mice and humans. *Sci Transl Med* 2013; **5**:172ra21.
- Tran ND, Cedars MI, Rosen MP. The role of anti-mullerian hormone (AMH) in assessing ovarian reserve. *J Clin Endocrinol Metab* 2011; **96**:3609–3614.
- van Beek RD, van den Heuvel-Eibrink MM, Laven JS, de Jong FH, Themmen AP, Hakvoort-Cammel FG, van den BC, van den BH, Pieters R, de Muinck Keizer-Schrama SM. Anti-Mullerian hormone is a sensitive serum marker for gonadal function in women treated for Hodgkin's lymphoma during childhood. *J Clin Endocrinol Metab* 2007; **92**:3869–3874.
- van den Berg MH, van Dulmen-den BE, Overbeek A, Twisk JW, Schats R, van Leeuwen FE, Kaspers GJ, Lambalk CB. Comparison of ovarian function markers in users of hormonal contraceptives during the hormone-free interval and subsequent natural early follicular phases. *Hum Reprod* 2010; **25**:1520–1527.
- van der Gaast MH, Eijkemans MJ, van der Net JB, de Boer EJ, Burger CW, van Leeuwen FE, Fauser BC, Macklon NS. Optimum number of oocytes for a successful first IVF treatment cycle. *Reprod Biomed Online* 2006; **13**:476–480.
- Van Disseldorp J, Lambalk CB, Kwee J, Looman CW, Eijkemans MJ, Fauser BC, Broekmans FJ. Comparison of inter- and intra-cycle variability of anti-Mullerian hormone and antral follicle counts. *Hum Reprod* 2010; **25**:221–227.
- van Elburg AA, Eijkemans MJ, Kas MJ, Themmen AP, de Jong FH, van EH, Fauser BC. Predictors of recovery of ovarian function during weight gain in anorexia nervosa. *Fertil Steril* 2007; **87**:902–908.
- van Hooff MH, Alberda AT, Huisman GJ, Zeilmaker GH, Leerentveld RA. Doubling the human menopausal gonadotrophin dose in the course of an in-vitro fertilization treatment cycle in low responders: a randomized study. *Hum Reprod* 1993; **8**:369–373.
- van Rooij IA, Broekmans FJ, te Velde ER, Fauser BC, Bancsi LF, Jong FH, Themmen AP. Serum anti-Mullerian hormone levels: a novel measure of ovarian reserve. *Hum Reprod* 2002; **17**:3065–3071.
- van Tilborg TC, Eijkemans MJ, Laven JS, Koks CA, de Bruin JP, Scheffer GJ, van Golde RJ, Fleischer K, Hoek A, Nap AW *et al.* The OPTIMIST study: optimisation of cost effectiveness through individualised FSH stimulation dosages for IVF treatment. A randomised controlled trial. *BMC Womens Health* 2012; **12**:29.
- Villarreal C, Merino PM, Lopez P, Eyzaguirre FC, Van VA, Iniguez G, Codner E. Polycystic ovarian morphology in adolescents with regular menstrual cycles is associated with elevated anti-Mullerian hormone. *Hum Reprod* 2011; **26**:2861–2868.
- Visser JA, Durlinger AL, Peters IJ, van den Heuvel ER, Rose UM, Kramer P, de Jong FH, Themmen AP. Increased oocyte degeneration and follicular atresia during the estrous cycle in anti-Mullerian hormone null mice. *Endocrinology* 2007; **148**:2301–2308.
- Visser JA, Hokken-Koelega AC, Zandwijken GR, Limacher A, Ranke MB, Fluck CE. Anti-Mullerian hormone levels in girls and adolescents with Turner syndrome are related to karyotype, pubertal development and growth hormone treatment. *Hum Reprod* 2013; **28**:1899–1907.
- Wallace AM, Faye SA, Fleming R, Nelson SM. A multicentre evaluation of the new Beckman Coulter anti-Mullerian hormone immunoassay (AMH Gen II). *Ann Clin Biochem* 2011; **48**:370–373.
- Wang J, Dicken C, Lustbader JW, Tortoriello DV. Evidence for a Mullerian-inhibiting substance autocrine/paracrine system in adult human endometrium. *Fertil Steril* 2009; **91**:1195–1203.
- Weenen C, Laven JS, Von Bergh AR, Cranfield M, Groome NP, Visser JA, Kramer P, Fauser BC, Themmen AP. Anti-Mullerian hormone expression pattern in the human ovary: potential implications for initial and cyclic follicle recruitment. *Mol Hum Reprod* 2004; **10**:77–83.
- Welsh P, Smith K, Nelson SM. A single-centre evaluation of two new anti-Mullerian hormone assays and comparison with the current clinical standard assay. *Hum Reprod* 2014; **29**:1035–1041.
- Wilson JD, George FW, Griffin JE. The hormonal control of sexual development. *Science* 1981; **211**:1278–1284.
- Wunder DM, Bersinger NA, Yared M, Kretschmer R, Birkhauser MH. Statistically significant changes of antimullerian hormone and inhibin levels during the physiologic menstrual cycle in reproductive age women. *Fertil Steril* 2008; **89**:927–933.
- Yates AP, Rustamov O, Roberts SA, Lim HY, Pemberton PW, Smith A, Nardo LG. Anti-Mullerian hormone-tailored stimulation protocols improve outcomes whilst reducing adverse effects and costs of IVF. *Hum Reprod* 2011; **26**:2353–2362.
- Zuvela E, Walls M, Matson P. Within-laboratory and between-laboratory variability in the measurement of anti-mullerian hormone determined within an external quality assurance scheme. *Reprod Biol* 2013; **13**:255–257.