



Antifungal Effects of Combined Extracts of *Euphorbia abyssinica* and *Coleus* Species

Tarh, Jacqueline Ebob^{1*}, Ekong, Mercy Okon¹
and Iroegbu, Christian Ukwuoma¹

¹Department of Biological Sciences, Cross River University of Technology Calabar, Nigeria.

Authors' contributions

This work was carried out in collaboration among all authors. Author TJE designed the study, performed the statistical analysis, wrote the protocol and wrote the first draft of the manuscript. Authors EMO and ICU managed the analyses of the study. Author ICU managed the literature searches. All authors read and approved the final manuscript.

Article Information

DOI: 10.9734/IJPR/2019/v2i430077

Editor(s):

- (1) Dr. Enid Owusu, Lecturer, Department of Medical Laboratory Sciences, School of Biomedical and Allied Health Sciences, University of Ghana, Ghana.
- (2) Dr. M. Sasikala, Associate Professor, Department of Pharmaceutical Analysis, Karpagam College of Pharmacy, Coimbatore, India.
- (3) Dr. Syeda Asma Bano, Assistant Professor, Department of Microbiology, University of Haripur, KPK, Pakistan.

Reviewers:

- (1) Vinotha Sanmugarajah, University of Jaffna, Sri Lanka.
 - (2) Ching-Feng Weng, National Dong Hwa University, Taiwan.
 - (3) Nadia Asseneth Rojano Vilchis, Universidad Nacional Autónoma de México, México.
- Complete Peer review History: <http://www.sdiarticle3.com/review-history/44048>

Original Research Article

Received 06 January 2019

Accepted 17 March 2019

Published 13 May 2019

ABSTRACT

Although, different plant extracts have frequently been used singly and in combinations in folklore treatment of different ailments, the hidden truth behind their activity and efficacy is still to be fully scientifically established.

Aim: To evaluate the effects of combined 50% methanol extracts of *Euphorbia abyssinica* (Desert Candle), and *Coleus* sp. on *Candida albicans*, *Trichophyton mentagrophytes*, *Microsporum gypseum* and *Epidermophyton floccosum*.

Study Design: The completely randomised block design, two-way analysis of variance was used to analyse the data and Duncan's New Multiple Range Test, for mean separation.

Place and Duration of Study: The research was carried out in the Department of Microbiology, University of Nigeria Nsukka, Enugu State, Nigeria, between April 2011 and August 2012.

Methodology: All the fungal strains used in the research were collected from the University of Nigeria Teaching Hospital Enugu, Nigeria. Susceptibility testing was done using a pour-plate

*Corresponding author: Email: j.ebobtarh@yahoo.com;

method, while the checkerboard and Time-kill assays were employed to evaluate the efficacy of the different combinations of the two plant extracts.

Results: The individual plant extracts inhibited all the fungal strains tested at different concentrations; but *Coleus* sp. extracts were observed to be more active than *Euphorbia abyssinica* extracts. The extract combinations inhibited the test fungi for more than two weeks. In the Time Kill assay, the combinations showed synergy on *E. Flocossum* only. It showed additive or antagonistic activity on the rest of the fungi tested. The Checkerboard combinations showed synergy on *T. mentagrophytes*, *M. gypseum*, and *E. foccosum*. *Epidermophyton foccosum* showed the most susceptible among the fungi tested while *C. albicans* was the least susceptible. The control drug voriconazole also inhibited all the fungi tested. Significant antifungal activity ($P=0.05$) was observed in the checkerboard assay more than in the Time Kill assay.

Conclusion: These findings simply authenticate some of the folklore claims that these plants have a wide range of curative uses, suggesting that they can be used as alternative sources of agents for the treatment of resistant fungal infections.

Keywords: *Coleus* sp.; *euphorbia abyssinica* combined; extracts; antifungal effects; checkerboard; time-kill.

1. INTRODUCTION

Fungal infections such as onychomycoses, disseminated infections associated with opportunistic pathogens like *C. albicans*, dermatophytosis, (invasion of keratinised tissues—skin, hair and nails – of humans and other animals) caused by three anamorphic fungal genera (*Epidermophyton*, *Microsporium* and *Trichophyton*), have reportedly increased worldwide [1], and so, have heightened public health concern. Recently, life-threatening and potentially fatal fungal infections have emerged in immune-compromised individuals [2]; with increasing drug resistance recorded in several cases, which were previously susceptible to the normal synthetic antifungal agents.

The spread of antifungal drug resistance is equally becoming a public health challenge globally [3,4]; and the situation has been exacerbated by global travel and distribution of food products [5] spontaneous mutations [6,7], acquisition of resistance genes from other microorganisms [8,9], widespread indiscriminate use of antimicrobials [10,11,12,13,5] as pesticides [4]; or, in animal feed [14,15], as food preservatives [16,17], and for treatment of infected patients. To add to the problem of resistance, treatment failure, and toxicity [9], most synthetic drugs are unaffordable to most people in rural and less developed areas of the world [18]. For the latter, their existence and survival history would be incomplete without a mention of the role of plants as sources of food and/or medicines [18,19,20]. Plants are naturally endowed with primary and secondary metabolites that are incidentally very important

nutrients or medicines to man and livestock [19,21,22]. Thus, as research reports on medicinal plants accumulate, there is gradual replacement of synthetic drugs (now notorious for failure in the treatment of resistant pathogens and in general toxicity) [9] from the pharmaceutical shops with herbal remedies.

Application of combinations of herbs to cure certain diseases is common in ethnomedicine; and this has formed the subject of experimentation on combination-therapy as a solution to extensive drug resistance among microbes [23]. Thus, multiple drug resistance (MDR) inhibitors or resistance modifying agents work synergistically to modify the resistance phenotype in microorganisms [24]. The Presence of such compounds in plants would give hope on the treatment of drug-resistant infections [25].

Euphorbia abyssinica and *Coleus* sp. are two medicinal plants, with a broad spectrum of activity against pathogenic microorganisms. The native population of *Kendem* in Cameroon, often use these two plants to prevent excessive loss of blood after childbirth, treat cuts, pruritus, superficial infections of the body, and diseases of the airways [20]; also as antispasmodic, and anti-histamine, as well as constricting and releasing tension from smooth muscles [26,20].

E. abyssinica is an evergreen, cactus-like plant that has been classified in the family *Euphorbiaceae* [20].

The word *Coleus* was originally coined from the word *Coleos* in Greek, which also means “sheath”. *Coleus* sp. belong to the genus

Plectranthus or mint group of plants with sweet smelling fragrance. They were formally classified in the family *Labiatae*, but currently in the *Lamiaceae* family. In Kendem locality in Cameroon for example, from where this plant was got, it is described as Osem antuoh, meaning "Toad's skin" [27].

This research, therefore, sets out to determine the effects and interactions of mixtures of extracts of *Euphorbia abyssinica* and *Coleus* sp. in varying ratios, against selected fungal strains.

2. MATERIALS AND METHODS

2.1 Collection and Preparation of Plant Extracts

The stem-bark of *Euphorbia abyssinica* and whole plants of *Coleus* sp. were collected from Kendem village in southern Cameroon. The specimens were authenticated at the Department of Botany, and the research carried out in the Department of Microbiology in the University of Nigeria, Nsukka. The specimens were thoroughly rinsed under running tap water and then cut into tiny pieces and air-dried in the dark. They were pulverised in a mortar, the powder weighed and stored in plastic bags. The powdered materials were then extracted using the method described by Tarh et al. [28].

2.2 Test Organisms

The test fungi used were obtained from the Department of Medical Microbiology, University of Nigeria Teaching Hospital Enugu, Nigeria. They were, purified by three successive sub-culture and re-isolation of discrete colonies on SDA (Sabouraud Dextrose Agar) medium, and identity reaffirmed by slide culture, staining and biochemical tests.

2.3 Susceptibility Testing of Fungi by Pour-plate Method

The susceptibility testing of fungi was done using a pour-plate method as described by Tarh and Iroegbu, [29]. A 2.0 mL amount of a 1000 mg/mL of the reconstituted plant extract was pipetted into a sterile glass test tube containing 18mL of molten Sabouraud Dextrose Agar (SDA) at about 45°C. The mixture was swirled carefully for the contents and agar to homogenise, thereafter, 100 µL of the standard fungal inoculums were seeded onto each tube. Again they were thoroughly mixed, the contents of each tube

poured into a sterile Petri dish and allowed to set before incubating at 25-35°C. A culture plate without the extract served as the positive control for growth while another plate containing 2.0 mL of 16 µg/mL voriconazole served as the negative control. As soon as growth was observed at the positive control plates, the test plates were checked for growth daily and the period of inhibition of growth was recorded in days.

2.4 Checker Board Assay

The 50% methanol extracts were further evaluated in combination using the CheckerBoard assay method described by Tarh and Iroegbu [20]. Solutions of the plant extracts were prepared, each in Sabouraud broth, and diluted using the continuous variation model, that was, by serially reducing the concentration by 10% with broth down to concentrations below the MIC. Then 2.0 mL of each dilution of *Euphorbia abyssinica* was put into the tubes in the columns, such that, while the concentrations of the extract changed 10% serially from column to column, the concentration along each column remained the same. The solutions of *Coleus* sp. extract were similarly distributed into the tubes in the rows such that while the concentrations of the extract vary from one row to the next, the tubes in each row contained the same concentration of the *Coleus* sp. extract. Consequently, each tube received a combination of the two extracts at different ratios. Each of the tubes was then inoculated with 0.1 mL of the standardised microorganisms (fungi) and all the mixtures were incubated aerobically at 25-35°C observing daily for appearance of growth.

2.5 Time Kill Assay

The effects of 50% methanol extracts of *Euphorbia abyssinica* and *Coleus* sp. were evaluated by a kinetic time kill assay using the macro broth dilution technique as described by Tarh and Iroegbu, [20]. The extracts were reconstituted in 20% Dimethyl Sulfoxide (DMSO) and appropriately diluted to the required concentrations. The inoculum size was determined according to the type of fungus, (e.g. 1×10^6 for *Candida albicans*; and 1×10^5 for dermatophytes). About 1.00 mL of the extract was added to 9 ml of Sabouraud dextrose broth, seeded with the appropriate concentrations of the test fungus to achieve concentrations equivalent to 0.5 x MIC, 1 x MIC, 2 x MIC, or 4 x MICs values. Two sets of control tubes were included for each experiment. One set was

seeded with the organism in broth without extract, and the other set contained broth without organism and extract. The control drug voriconazole was similarly diluted. All the fungal cultures were incubated at 35°C for ≥ 48 hours. Immediately after inoculation of the tubes, aliquots of 100 µL of the negative control tubes contents were taken, serially diluted in saline and seeded on nutrient agar plates to determine the zero hour counts. The same was done for the tubes which contained the test fungi after 0 hours, 6 hours, 12 hours, 24 hours and 48 hours, respectively. After incubation, the emergent colonies were counted and the mean count (Colony Forming Units /mL, CFU) of each test organism was determined and expressed as log₁₀. The Minimum Lethal Concentrations (MLCs) of the extracts were the lowest concentrations that gave 99.9% to 100% killing.

In the interaction study, the plant extracts were reconstituted in 20% Dimethyl Sulfoxide (DMSO) and then combined using the continuous variation method to obtain concentration ranges which included the MICs obtained with the plant extracts tested singly; as well as sub-inhibitory concentrations. Then 0.1 mL of the standardised inoculums was put into 9.9 mL of the diluted plant extracts. Inoculated tubes of Sabouraud Dextrose broth were included as positive controls. Tubes of Sabouraud Dextrose broth only were included as negative controls while other tubes containing the MICs of the plant extracts alone were also included in the tests. A volume of 100 µL from the tubes containing fungi without plant extract was withdrawn immediately after inoculation, serially diluted and seeded on the already prepared Sabouraud Dextrose agar plates to determine the zero-hour count. The tubes were incubated at 25- 35°C for > 48 hours, during which aliquots of 100 µL were withdrawn at intervals of 15 minutes, 1 hour, 6 hours, 12 hours, 24 hours, 48 hours after inoculation, diluted and plated for colony counts.

The mean of the separate test counts was determined and expressed as Log₁₀ CFU/mL. The interactions were considered synergistic if there were decreases of ≥ 2 log₁₀ CFU/mL in colony counts after incubation periods by the combination compared to the most active single agent. Additivity or indifference was described as a < 2 log₁₀ CFU/mL change in the average viable counts after the incubation periods for the combination, in comparison with the most active single drug. Antagonism was defined as a ≥ 2 log₁₀ CFU/mL increases in colony counts after

the incubation periods by the combinations; compared to that of the most active single extract alone [29]. All the experiments were performed in quadruples and the data collected from four repeated experiments were analysed using the Randomised Complete Block Design (Two-way analysis of variance). Duncan's New Multiple Range Test was used to separate the means that were significantly different.

3. RESULTS

3.1 Testing the Susceptibility of the Fungi by Agar Plate Methods

It was observed that there was a considerable activity of the extract combinations against the fungi tested. This was indicated by long periods of growth inhibition (above two weeks) observe with all the fungal strains tested (Table 1).

3.2 The Checkerboard Assay Method of Evaluating the Antifungal Effects of Interactions between *E. abyssinica* (E) and *Coleus* sp. (C) Extracts

In the study reported here, the MICs of the combinations were recorded and the fractional inhibitory concentration (FIC), for each extract, was calculated as MIC of extract in the combination divided by MIC of single extract. FIC index was also calculated using the formula, FIC index = ΣFIC *Euphorbia* + FIC *Coleus*. FIC index value of 1 indicates additive interaction, < 1, synergy, >1 < 2, Indifference and >2, antagonism [20].

The Isobologram data generated from the results of the interactions of plant extracts in combination, using MIC data directly as well as the calculated FICs, were plotted as the first points which no growth occurred. This resulted in a plot or graph called an "isobole". Any points which fell on a straight line between the x and y-axes were considered as additive. A curved deviation to the left of the additive line was an indication of synergy, while antagonism was indicated by a curved deviation to the right of the additive line [20].

The combined effect was synergistic against *T. mentagrophytes*. This was seen at Fractional Inhibitory Concentrations (FIC) of *Euphorbia* 0.2 / FIC of *Coleus* 0.7 mg/mL with FIC Index of 0.9 mg/mL, and at FIC of *Ea* 0.1 / FIC of *Cs* 0.8 mg/mL and FIC Index of 0.9 mg/mL (Fig.1).

The synergistic effects observed with *M. gypseum* were at four different combinations of *E. abyssinica* (Ea) and *Coleus* sp (Cs) extracts proportions viz; at FIC of Ea 0.8 / FIC of Cs 0.1 mg/mL, FIC Index 0.9 mg/mL, At FIC of Ea 0.7 / FIC of Cs 0.2 mg/mL, FIC Index 0.9 mg/mL, at FIC of Ea 0.4 / FIC of Cs 0.5, FIC Index 0.9 mg/mL and at FIC of Ea 0.3 / FIC of Cs 0.6 mg/mL, FIC Index 0.9 mg/mL respectively (Fig. 2).

The susceptibility pattern seen with the fungal strains tested showed that *E. floccosum* was significantly inhibited (with a significant mean value of 1.0753 at P =0.05. more than all the other fungi strains tested (*Candida albicans*, *Microsporium gypseum*, *Trichophyton mentagrophytes*, with mean values of 11.7813, 2.8100, 2.0153 respectively). This synergy was observed in the isoboles as indented points away from the additive line to the left. The plant extract proportions that showed synergy against *E. floccosum* include: FIC Ea of 0.6 / FIC of Cs 0.1 mg/mL, FIC Index 0.7 mg/mL, FIC of Ea 0.6 / FIC of Cs 0.2 mg/mL, FIC Index 0.8 mg/mL, FIC of Ea 0.6 / FIC of Cs 0.3 mg/mL, FIC Index 0.9 mg/mL and at FIC of Ea 0.1 / FIC of Cs 0.8 mg/mL, FIC Index 0.9 mg/mL (Fig. 3).

Candida albicans showed some significant level of antagonism to the various combinations tested. This was seen as points of indentations distant away from the additive line to the right (Fig. 4)

3.3 Time-kill Assay Method of Evaluating the Antifungal Effects of Interactions between *E. abyssinica* (E) and *Coleus* sp. (C) Extracts

In the assay method, the effect of interactions was compared to that of the most efficacious plant extract singly. If the interactions were able to reduce the viable cell counts to more than 2 log₁₀ CFU/mL, this was accepted as synergistic but if there were increases in the viable cell counts which were more than 2 log₁₀ CFU/mL, then this was antagonism.

The antifungal activity of combined hydro-alcohol extracts of *Coleus* sp. and *E. abyssinica* was evaluated by exposing the test fungi to various combined proportions of the extracts at different time intervals, which included; 0 hour, 6 hours, 12 hours, 24 hours and 48 hours. The test fungi viable cell counts were standardised to contain 1x10⁶ for the yeasts and 1x10⁵ for the moulds.

The more potent single plant extract observed in the research was *Coleus* sp. and its effect alone on *Candida albicans* and *Trichophyton mentagrophytes* cells showed that the extract at MIC and at double the MIC concentrations decreased the cell counts to about 0.05 log₁₀ by the 48 hours (Figs. 5 & 6). This same double MIC (15.6 mg/mL) killed *M. gypseum* cells in 6 hours (Fig. 7).

However, when *Coleus* sp. and *E. abyssinica* extracts were combined, they exhibited no synergistic interactions against *Candida albicans*, *Trichophyton mentagrophytes* and *M. gypseum* (Figs. 5,6 & 7).

In 48 hours, *Coleus* sp. (the more active of the plant extracts) at MIC of 0.98 mg/mL, decreased *E. floccosum* viable cell counts from 1x10⁵ CFU to 0.97log₁₀. When the MIC was doubled to 1.96 mg/mL, the *E. floccosum* cells were all killed in 3hours. The 1 µg/mL of the control drug inhibited the fungal cells in 48 hours (Fig. 8).

When *Coleus* sp. and *E. abyssinica* extracts were combined and the activity compared to *Coleus* sp. extract alone, it was observed that the interactions showed synergistic effects against *E. floccosum*.

This was detected by the effects observed with the following interactions; Adding 1:8 proportions i.e 0.098 mg/mL of Ea with 0.78mg/mL of Cs to yield 0.878 mg/mL of these extracts decreased the cell counts from 1x10⁵ to 2.0 log₁₀ CFU in 48 hours. In the same trend, combining 0.59 mg/mL of Ea with 0.098 mg/mL of Cs to give 0.688mg/mL and 0.59 mg/mL of Ea with 0.196 mg/mL of Cs to get 0.786 mg/mL i.e. 6:1 and 6:2

Table 1. Duration of fungal growth inhibition in weeks by 100 mg/mL of combined extracts of *Euphorbia abyssinica* and *Coleus* sp

Plant extract combination	Fungal species/growth inhibition in weeks			
	<i>C. albicans</i>	<i>T. mentagrophytes</i>	<i>M. gypseum</i>	<i>E. floccosum</i>
Voriconazole16 µg/mL	>1	>2	>2	>2
	>2	>2	>2	>2

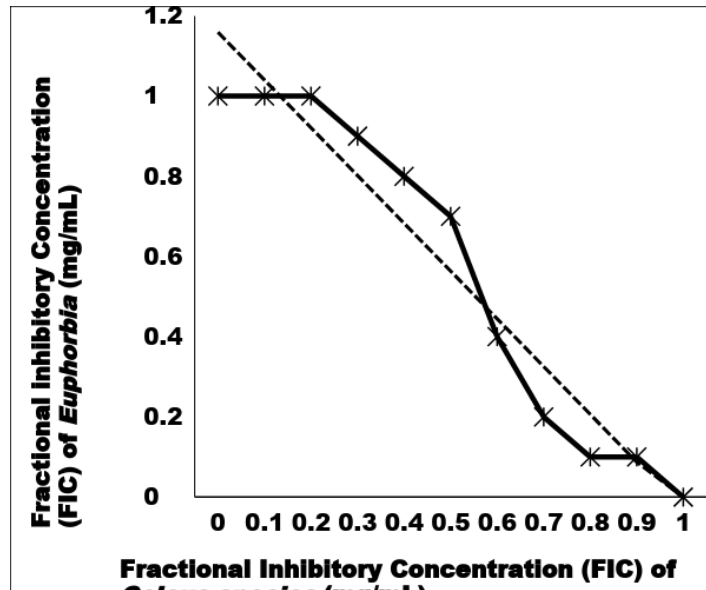


Fig. 1. The effects and interactions of combinations of extracts of *E. abyssinica* and *Coleus species* on *T. mentagrophytes*. The intercept of the interaction between Ea and Cs extracts () shown in comparison with the combined effects vis-a-vis the more active plant extract tested singly (---- = additive line)

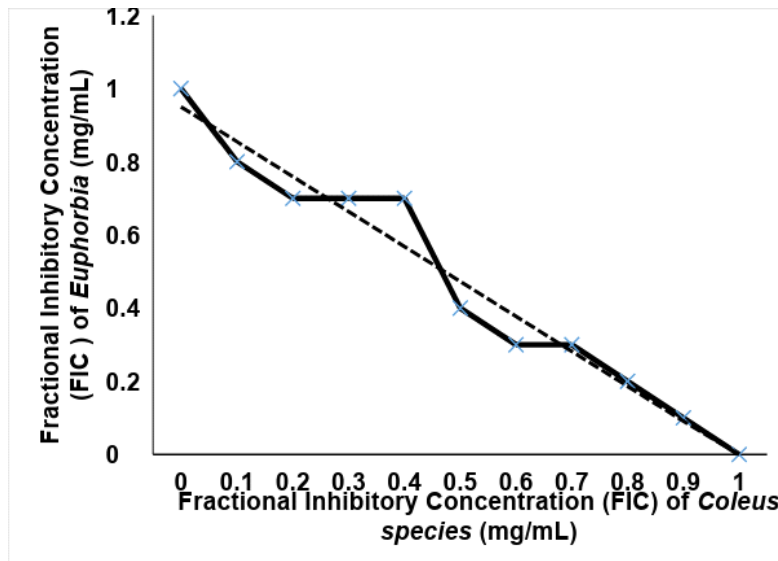


Fig. 2. The effects and interactions of combinations of extracts of *E. abyssinica* and *Coleus species* on *M. gypseum* intercept of the interaction between Ea and Cs extracts () shown in comparison with the combined effects vis-a-vis the more active plant extract tested singly (---- = additive line)

Synergy was observed in the isoboles as indented points away from the additive line to the left while antagonism was seen as indentations distant away from the additive line to the right

combinations respectively, eradicated the viable cells within 48 hours. However, combining 6:3 proportions i.e. 0.59mg/mL of Ea and 0.29 mg/mL of Cs to get 0.88 mg/mL, dropped the cell

count to 1.0 log₁₀ and to 0.3 log₁₀ in 24 hours and 48 hours respectively. The cell counts were all in this case reduced beyond 2 log₁₀, signifying synergy (Fig. 8).

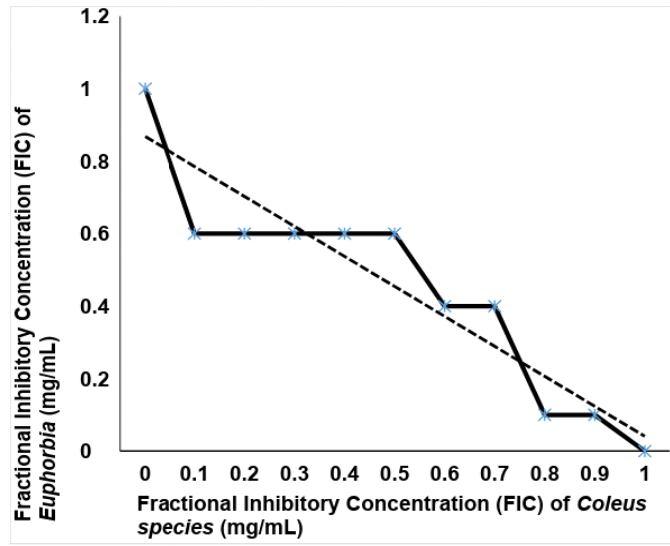


Fig. 3. The effects and interactions of combinations of extracts of *E. abyssinica* and *Coleus species* on *E. floccosum*. The intercept of the interaction between Ea and Cs extracts () shown in comparison with the combined effects vis-a-vis the more active plant extract tested singly (--- = additive line)

Synergy was observed in the isoboles as indented points away from the additive line to the left while antagonism was seen as indentations distant away from the additive line to the right

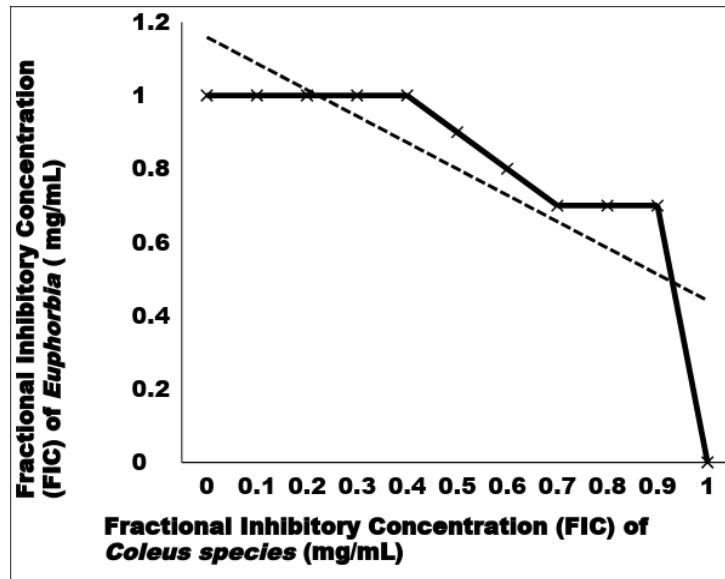


Fig. 4. The effects and interactions of combinations of extracts of *E. abyssinica* and *Coleus species* on *Candida albicans*. The intercept of the interaction between Ea and Cs extracts shown in comparison with the combined effects vis-a-vis the more active plant extract tested singly (--- = additive line)

Synergy was observed in the isoboles as indented points away from the additive line to the left while antagonism was seen as indentations distant away from the additive line to the right

Interactions that reduce the number of viable cells above $2 \log_{10}$ CFU/mL, were accepted as synergistic but if there were increases in the

viable cell numbers which were more than $2 \log_{10}$ CFU/mL, then this was antagonism.

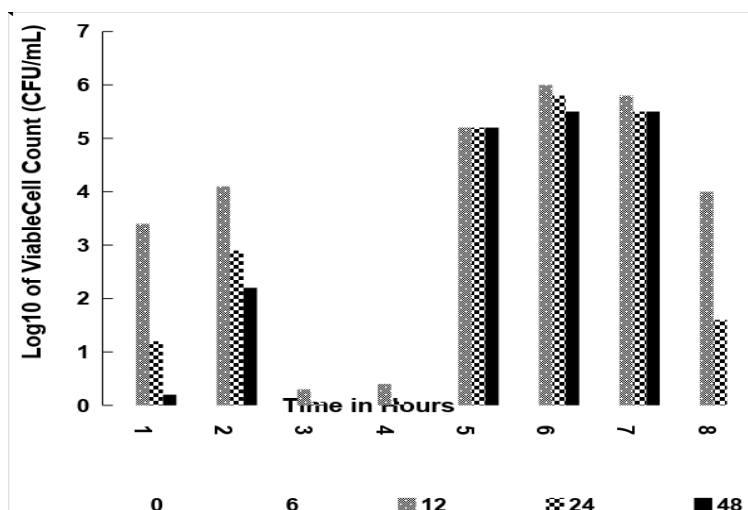


Fig. 5. Effects of time of exposure of the combined plant extracts on the of viable cell counts of *Candida albicans*
Ea=*Euphorbia abyssinica*, Cs=*Coleus sp.*

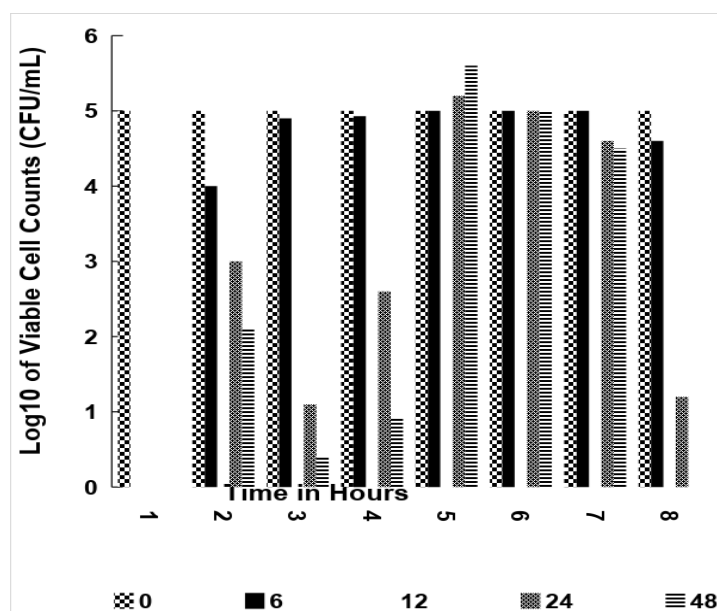


Fig. 6. Effects of time of exposure of plant extracts on the viable cell counts of *Trichophyton mentagrophytes*
Ea=*Euphorbia abyssinica*, Cs=*Coleus sp.*

4. DISCUSSION

In ethnomedicine, plant extracts are often used in different combinations, but the precise quantity of each constituent is not known. However, they still remain the preferred method of treatment in most local and underdeveloped areas of the world where the orthodox drugs are not easily available [29].

Determining the effects and interactions of mixtures of extracts of *Euphorbia abyssinica* and *Coleus sp.* in varying ratios, against selected fungal strains, was the aim of the study reported here.

In the susceptibility testing, which was done using the pour plate method, no significant difference was observed with the number of

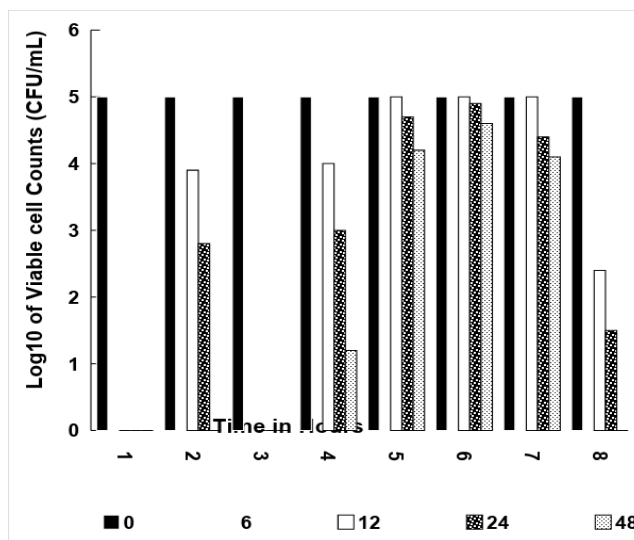


Fig. 7. Effect of time of exposure of the combined plant extracts on the viable cell counts of *Microsporium gypseum*
Ea=*Euphorbia abyssinica*, Cs=*Coleus sp.*

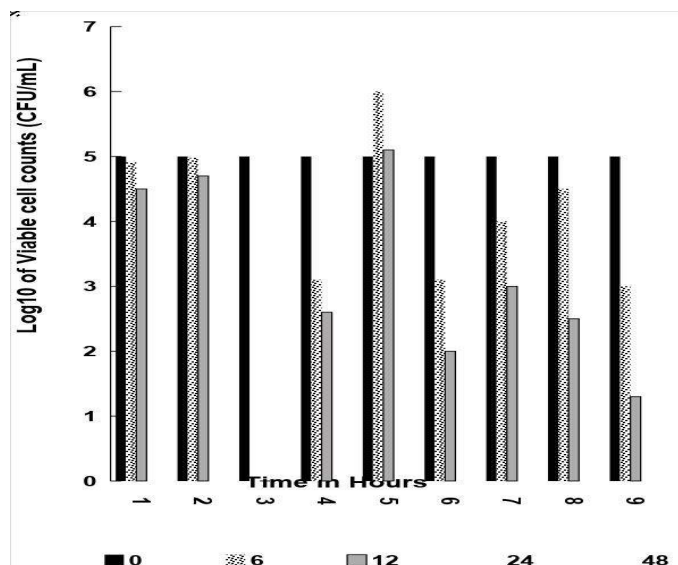


Fig. 8. Effects of time of exposure of the combined plant extracts on the viable cell counts of *E. floccosum*
Ea=*Euphorbia abyssinica*, Cs=*Coleus sp.*

weeks that the plant extract, as well as the control drug, inhibited the fungal growth. The mean values observed were 2.0463 for the plant extract and 2.4053 for the control drug. The Kinetic Time-Kill and Checkerboard assay were used to evaluate the antifungal activity of single components as well as the interactions of different proportions of *E. abyssinica* and *Coleus*

sp. extracts. This was to determine whether combinations of the two plant extracts, after the interaction, could produce an effect that could be synergistic, antagonistic or additive against the fungi tested. An additive, the effect is observed when the combined effect is not more than the individual effect of the most active plant extract. In such a case even lower concentrations than

those obtained with the individual extracts alone equally yield the same effect [30].

For drug interactions which result in synergistic effects (agonists), the concentration of each drug in the combinations may not necessarily need to be up to that obtained when the drugs are used singly. If reduced quantities of each interacting drug or of a particular component alone can react, they will still produce the required synergy. At times, the observed effect with some drug interactions may indicate that the activities of the reactant (s) have decreased and this effect is termed sub-additive [30].

Many different methods have been used by different researchers to evaluate and represent the effects of drug combinations; and an example of such representation is the isobole, a curve produced by Loewe in 1957. He plotted a graph using the doses of two drugs, one on the 'Y' and the other as the 'X'-axes. The individual drug concentrations that could interact, when given in combination, to produce an effect (synergy, antagonism, etc) were seen on the rectangular plot as points which was termed as "isobole" [30].

However, when in-vivo, drugs, regardless of the fact that they are administered in combination, or singly, may be encountered by the plasma proteins and other natural components, present in the human system. The evaluation of the activity and effects of the dose of each agonist, gives better information, especially about those agonists which use different modes of action with different receptors to produce synergy. These types of agonists, termed "similar and independent" by Bliss [31], do not interfere with each other since their binding sites are independent of one another.

Studies of this sought to try to address some doubts which may arise about the response produced by one or two agonists; whether their interactions will be additive, synergistic or antagonistic when compared to the single drugs effects.

In this study, *Coleus* sp. extracts, one of the single components used in the interaction study, showed a significantly higher level of activity ($P=0.05$), with mean of 3.2581, more than the second plant (*Euphorbia abyssinica* extract) with mean of 5.460. A contributory factor could be that the *Coleus* sp. was used as a full-spectrum plant extract, which means that the entire chemical profile available in the flowers and all

other parts together with the roots is present in the final medicinal form [32].

In comparing the methods used in the study, the results indicated that the Agar diffusion, the method produced the best response than the Kinetic Time kill and the Checkerboard assays. However, in the Combination study, the Checkerboard assay showed a more significant sensitivity pattern (with a significant F cal. of 21.299) than the Time-kill Assay (F cal. of 99.381). Tarh and Iroegbu [20] observed that the Kinetic Time-kill and the Checkerboard assays were dependent on predetermined MICs of the single extracts, and this could at times not be hundred per cent reliable, due to the fact that MIC values can be affected by confounding, bias, inaccuracy and lack of precision in the variables used.

In the checkerboard assay, the antifungal activity observed with the interaction between *E. abyssinica* and *Coleus* sp. extracts indicated that the two plant extracts are agonists' in-vitro. The fractional inhibitory concentrations (FIC) of both extracts indicated that there was synergy against *T. mentagrophytes* and *M. gypseum* at FIC indices of 0.9 mg/mL, respectively. This was also seen against *E. floccosum* at FIC indices of 0.7, 0.8 and 0.9 mg/mL. The effect of the plant extracts at different combinations was indifferent against *Candida albicans*.

In the kinetic Time-kill assay, Synergy was significantly observed against *E. floccosum* with more than 2 \log_{10} reductions in the number of viable cells counted within 48hours and significant mean value of 1.0753 at $\alpha=0.05$. Interacting lower concentrations of 0.688 mg/mL and 0.786 mg/mL, killed the cells in 48 hours, while higher concentrations of 0.878 mg/mL and 0.880 mg/mL decreased the cell counts to 2.0 \log_{10} and 0.3 \log_{10} in 48 hours, respectively. The lower combinations showed better effects because at, higher concentrations, the plant extracts could present some unwanted adverse side effects.

The plant extract combinations inhibited the growth of the three molds tested, but the effects against the yeast *C. albicans* were the reverse because no synergy was observed at all the combinations tested.

The effects observed between the above plant extract interactions and the fungi tested, showed that there was some degree of inactivity in- vitro.

However, this was not a confirmation that the same scenario would be observed when the drug was administered internally. This was because of some components of the body may play some roles when the drug gets into the system. These interactions between the tissues and the drugs would also cause changes that might affect the activity and effects of others that use the same receptor type [33] e.g Calcium, magnesium and aluminium ions, which were components of some antacids, could calcify and crystallise metal-tetracycline and render it less absorbable [33]. Drugs that has been taken orally, pass through the digestive tract and encountered by digestive enzymes prior to their absorption into the blood. This condition might cause a vast amount of the drug to be lost through the quick metabolic activity of the hepatic system – the so-called “first pass effect” [33]. Competitive Inhibition also occurred amongst the drugs because some of them extensively bound to plasma proteins and, therefore, competition for binding sites, on the receptor, may result in an inadequate serum concentration, of the antibiotic being reached, with consequent failure of therapy [33].

Toxicity test which evaluated the lethal dose (LD50) might present a better picture of the drug effect *in vivo*. Better still, the quanta dose-effect or dose-response curve that displayed the percent of animals that respond to the drug i.e the hyperbolic curve described by the equation $E = E_{max}D/(D + C)$ where E was the effect, D was dose and C the constant, which was equal to the dose needed for a half-maximal response, a measure of drug potency, often denoted as ED_{50} or D_{50} [30] could be used.

The wide range of antimicrobial activity observed by other researchers with these two plants has also been confirmed in this research work. Extracts of *E. abyssinica* and *Coleus* sp. in combination were able to inhibit the growth of both yeasts and moulds. There had been reports of the same pattern of antimicrobial effects of alcohol extracts of *Coleus* sp. by Jay, [34] and Tarh and Iroegbu [29].

5. CONCLUSION

In this study, the effects of the interactions observed with these two plant extracts (*E. abyssinica* and *Coleus* sp.), showed that the plant extracts inhibited all the fungi tested, though not at all the combinations. This provided novel information about the antifungal potentials

of the above two plant extracts against drug-resistant pathogens. It remained to be determined if the effects and interactions observed with the crude extracts used in this study would be reproduced with purified plant extracts or indeed with the isolated active ingredients. Further investigations on the mechanism of the synergistic action of these plants are necessary if they must be considered as alternative sources of broad-spectrum drugs for antifungal therapy.

COMPETING INTERESTS

Authors have declared that no competing interests exist.

REFERENCES

1. Shivakumar SP, Vidyasagar GM. J. Appl. Pharmaceut. Sc. Antifungal screening of 61 folkloric medicinal plant extracts against dermatophytic fungi *Trichophyton rubrum*. 2015;5(05):038-044.
2. Shanmugam K, Gnanaprakasam AR, Manivachagam C. Antifungal activity of different crude extracts of leaves of *Madhuca indica*. Int. J. Nat. Prod. Res. 2014;4(3):88-95.
3. Chiller T. The rise in antifungal resistance Medscape; 2016.
4. Revie NM, Iyer KR, Robbins N, Cowen LE. Antifungal drug resistance: Evolution, mechanisms and impact. Curr. Opin. Microbiol. 2018;12(45):70-76. DOI: 10.1016/j.mib.2018.02.005. [Epub ahead of print]
5. Imperial College London. Resistance to antifungal drugs could lead to disease and global food shortages. Science Daily. Science Daily; 2018. Available:www.sciencedaily.com/releases/2018/05/180517143604.htm
6. Robbins N, Tavia C, Cowen LE. Molecular Evolution of Antifungal Drug Resistance Ann. Rev. Microbiol. 2017;71:753-775.
7. Castanheira M, Deshpande LM, Davis AP, Rhomberg PR, Pfaller MA. Monitoring antifungal resistance in a global collection of invasive yeasts and molds: Application of CLSI epidemiological cutoff values and whole genome sequencing analysis for detection of azole resistance in *Candida albicans*. Antimicrob. Agents Chemother. 2017;61:e00906-17. Available:https://doi.org/10.1128/AAC.00906-17

8. Cowen LE, Sanglard D, Howard SJ, Rogers PD, Perlin DS. Mechanisms of antifungal drug resistance. Cold Spring Harb. Perspect. Med; 2015. DOI: 10.1101/cshperspect.a019752 [Originally published online November 10, 2014]
9. Sanglard D. Emerging threats in antifungal-resistant fungal pathogens. Front. Med. 2016; 3:11. DOI: 10.3389/fmed.2016.00011
10. Azevedo MM, Faria-Ramos I, Cruz LC, Pina-Vaz C, Rodrigues AG. Genesis of azole antifungal resistance from agriculture to clinical settings J. Agric. Food Chem. 2015;63(34):7463-7468. DOI: 10.1021/acs.jafc.5b02728
11. Saravanasingh K, George FP, Ramamurthy M. A study on Antibacterial and antifungal activities of extracts of Medicinal plant *Aegle marmelos* Int. J. Adv. Res. Biol. Sci. 2016;3(2):321-328.
12. Tarh JE, Iroegbu CU. Microbiological evaluation of combinations of extracts of *Euphorbia abyssinica* and *Coleus* species for antibacterial activity. Indian E-J. Pharmaceut. Sc. 2017a;03(01).
13. Wiederhold NP. Antifungal resistance: Curr. Trends Fut. Strat. Combat. Infect. Drug Resist. 2017;10:249–259. Available:<http://dx.doi.org/10.2147/IDR.S124918>
14. Mie A, Helle RA, Gunnarsson S, Kahl J, Guyot EK, Ewa R, Gianluca Q, Grandjean P. Human health implications of organic food and organic agriculture: A comp. Rev. Env. Health. 2017;16:111.1-22. DOI: 10.1186/s12940-017-0315-4
15. Fisher MC, Hawkins NJ, Sanglard D, Gurr SJ. Worldwide emergence of resistance to antifungal drugs challenges human health and food security. Sc. 2018;360(6390): 739-742. DOI: 10.1126/science.aap7999
16. Baljeet SY, Simmy G, Ritika Y, Roshanlal Y. Antimicrobial activity of individual and combined extracts of selected spices against some pathogenic and food spoilage microorganisms Int. Food Res. J. 2015;22(6):2594-2600
17. Salas ML, Mounier J, Valence F, Coton M, Thierry A, Coton E. Antifungal microbial agents for food bio preservation-A review. Microorganisms. 2017;5:37. DOI: 10.3390/microorganisms5030037
18. Tarh JE, Iroegbu, CU. *In- vitro* evaluation of anti-fungal effects of *Euphorbia abyssinica* (Desert Candle) Extracts, J. Adv Med. Pharmaceut. Sc. 2017b;13(1):1-10.
19. Padalia H, Anjali T, Chanda S. Antimicrobial activity of some medicinal plant extracts and its synergistic interaction with some antibiotics J. Pharm. Res. 2016; 10(5):211-220.
20. Tarh JE, Iroegbu CU. *In-vitro* anti-bacterial activity of extracts of *Euphorbia abyssinica* (Desert Candle) Stem-Bark and Latex. J. Adv Microbiol. 2017C;2(4):1-13.
21. Sukandar EY, Neng FK, Pratiwi W, Deani A. Antibacterial interaction of combination of ethanolic extract of *Zingiber officinale* var rubrum rhizome, *Boesenbergia pandurata* rhizome, and *Stevia rebaudiana* leaves with certain antibiotics against infectious mouth microbial. Asian J Pharm Clin Res. 2016;9(1):332-335.
22. Donkor AM, Oduro-Mensah D, Konona-Ang PM. *In vitro* antibacterial activity of PEG formulations of crude extracts of *Cleome viscosa*, *Tamarindus indica* and *Euphorbia hirta*. Res. J. Microbiol. 2016; 11(6):202-207.
23. Dry RJ, Mi Y, Saez-Rodriguez J. Looking beyond the cancer cell for effective drug combinations. Gen. Med. 2016;8:125.
24. Ranjan S, Bhavya K, Muntaj Sk, Basumata G, Rajesh M. Synergistic effect of some medicinal plants and antibiotics against few pathogenic bacteria. Intern. J. Biol. & Pharmaceut. Res. 2012;3(8):1000-1004.
25. Sanjeev R, Bhavya K, Muntaj SK, Basumata G, Rajesh M, Sanjeev R. Synergistic effect of some medicinal plants and antibiotics against few pathogenic bacteria Int. J. Biol. & Pharmaceut. Res. 2012;3(8):1000-1004.
26. Yashaswini S, Vasundhara M. *Coleus (Plectranthus barbatus)* – A multipurpose medicinal herb. The 12th Invest in ME Research Conference; 2017(Part 2). Available:<http://core.kmi.open.ac.uk/display/1034673>
27. Biqiku L, Lupidi G, Petrelli D, Vitali LA. Antimicrobial activity of single and combined extracts of medicinal plants from Cameroon. IOSR-JPBS. 2016;11(4)Ver. IV:86-90.
28. Tarh JE Okafor JI, Iroegbu CU. Evaluation of extracts of *Coleus* species for antibacterial activity. Afr. Biotech. 2015; 14(2):125-132.
29. Tarh JE, Iroegbu CU. Evaluation of anti-fungal activity of *Coleus* species extracts.

- Int. J. Curr. Res. Biosci. Plant Biol, 2017d; 4(1):131-138.
30. Tallarida RJ. Drug combinations: Tests and analysis with isoboles. *Curr Protoc Pharmacol.* 2016;72:(9):191–9.
31. Bliss CI. The toxicity of poisons applied jointly. *Ann Appl Biol*, 1939;26:585–615.
32. Saraswati JKK, Avinash KN. Analytical techniques for phytochemicals screening and bioactivities of some *Coleus* Species: A review. *J. Pharm. Sci. & Res.* 2016;8(4): 227-237.
33. Richens A. Drug interactions and lethal drug. *J. Clin. Pathol.* 1975;3-9:94-98.
34. Jay. Whole plant cannabis extracts: The important combination of THC and CBD; 2016. Available:<https://www.yerba.org>.

© 2019 Ebob et al.; This is an Open Access article distributed under the terms of the Creative Commons Attribution License (<http://creativecommons.org/licenses/by/4.0>), which permits unrestricted use, distribution, and reproduction in any medium, provided the original work is properly cited.

Peer-review history:
The peer review history for this paper can be accessed here:
<http://www.sdiarticle3.com/review-history/44048>