

FULL TITLE: Antimicrobial resistance and virulence characteristics of *Klebsiella pneumoniae* isolates in Kenya

SHORT TITLE: Antimicrobial resistance and virulence in *Klebsiella pneumoniae*

Angela W. Muraya¹, Cecilia Kyany'a^{2,3}, Shahiid Kiyaga⁴, Hunter J. Smith², Caleb Kibet^{1,5}, Melissa J. Martin⁶, Josephine Kimani¹, Lillian Musila^{2,3*}

¹ Department of Biochemistry, Jomo Kenyatta University of Agriculture and Technology, P.O. Box 62000 – 00200 Nairobi, Kenya

² United States Army Medical Research Directorate-Africa, P.O. Box 606-00621, Village Market, Nairobi, Kenya

³ Kenya Medical Research Institute, P. O. Box 54840-00200, Nairobi, Kenya

⁴ Department of Immunology and Molecular Biology, School of Biomedical Sciences, College of Health Sciences, Makerere University, P.O. Box 7072, Kampala, Uganda

⁵ International Center for Insect Physiology and Ecology, P.O. Box 30772-00100, Nairobi, Kenya

⁶ Multidrug-Resistant organism Repository and Surveillance Network (MRSN), Walter Reed Army Institute of Research, Silver Spring, Maryland, 20910, USA.

*Corresponding author:

Lillian Musila, PhD
United States Army Medical Research Directorate-Africa, P.O. Box 606-00621, Village Market, Nairobi, Kenya
Email: Lillian.Musila@usamru-k.org
Tel: +254-728817872

KEYWORDS: antimicrobial resistance, virulence, whole-genome sequencing, Kenya, *Klebsiella pneumoniae*

ABSTRACT

Klebsiella pneumoniae is a globally significant opportunistic pathogen causing healthcare-associated and community-acquired infections. This study examined the epidemiology and the distribution of resistance and virulence genes in clinical *K. pneumoniae* strains in Kenya. Eighty-nine *K. pneumoniae* isolates were collected over six years from five counties in Kenya and were analyzed using whole genome sequencing and bioinformatics. These isolates were obtained from community-acquired (62/89) and healthcare-associated infections (21/89), and the hospital environment (6/89). Genetic analysis revealed the presence of *bla*_{NDM-1} and *bla*_{OXA-181} carbapenemase genes and the *armA* and *rmtF* genes known to confer pan-aminoglycoside resistance. The most abundant extended-spectrum beta-lactamase genes identified were *bla*_{CTX-M-15} (36/89), *bla*_{TEM} (35/89), and *bla*_{OXA} (18/89). In addition, one isolate had a mobile colistin resistance gene (*mcr-8*). Fluoroquinolone resistance-conferring mutations in *gyrA* and *parC* genes were also observed. The most notable virulence factors were those associated with hyper-virulence (*rmpA/A2* and *magA*), yersiniabactin (*ybt*), salmochelin (*iro*), and aerobactin (*iuc* and *iutA*). Thirty-eight distinct sequence types were identified, including known global lineages ST14, ST15, ST147, and ST307, and a regional clone ST17 implicated in regional outbreaks. In addition, this study genetically characterized two potential hypervirulent isolates and two community-acquired ST147 high-risk clones that contained carbapenemase genes, yersiniabactin, and other multidrug resistance genes. These results demonstrate that the resistome and virulome of Kenyan clinical and hospital environmental *K. pneumoniae* isolates are diverse. The reservoir of high

risk-clones capable of spreading resistance and virulence factors have the potential to cause unmanageable infection outbreaks with high morbidity and mortality.

AUTHOR SUMMARY

Klebsiella pneumoniae is one of the human-disease-causing bacteria that easily acquires and spreads antibiotic resistance genes and is thus a serious threat to human health. We studied both the antibiotic resistance genes and the genes it uses to cause disease (virulence). Forty-two percent of our isolates were multidrug resistant (MDR). They carried several resistance and virulence genes bound in mobile circular DNA molecules called plasmids which easily migrate and spread the genes between bacteria. We identified 38 distinct *K. pneumoniae* strains (STs) distributed within the study sites. Fifteen isolates were classified under the groups of *K. pneumoniae* strains known to cause global infection outbreaks such as ST14, ST15 and ST147 collected from Nairobi and Kisumu, hotspot areas for spread of resistance. In particular, two ST147 isolates were resistant to carbapenems and one isolate to colistin, which are last line antibiotics. We also identified two isolates with the potential to cause high levels of disease. We concluded that the presence of highly resistant and virulent strains in the hospital and community demonstrates a need for the continuous monitoring and management of MDR *K. pneumoniae* infections to prevent disease outbreaks that are difficult to control and that lead to high death rate.

INTRODUCTION

Klebsiella pneumoniae (KP) is a gram-negative, rod-shaped ubiquitous bacterium that inhabits soil, water, and sewage ecosystems. It is also found on various human body sites and organ systems,

including skin, nose, throat, and intestinal tract, as part of the natural microflora (1). *K. pneumoniae* is a prominent member of the *Klebsiella pneumoniae* species complex (KpSC), consisting of four species commonly associated with human infections, including *Klebsiella pneumoniae subsp. pneumoniae*, *Klebsiella quasipneumoniae subsp. quasipneumoniae*, *Klebsiella quasipneumoniae subsp. similipneumoniae* and *Klebsiella variicola subsp. variicola* (2). These species cause infections such as pneumonia, urinary tract infections, soft tissue and wound infections, septicemia, and pyogenic liver abscesses (3).

The World Health Organization (WHO) declared antimicrobial resistance (AMR) as one of the top 10 most serious global public health threats facing humanity (4). The WHO lists *K. pneumoniae* as one of the AMR bacteria of concern due to its demonstrated proclivity for developing antimicrobial resistance to many classes of antibiotics such as penicillins, cephalosporins, and quinolones (5–7) which are typically used to treat KP infections. This resistance is due to both chromosomal-encoded and plasmid-encoded genes. The abundance of AMR genes carried on plasmids and mobile genetic elements have earned KP its reputation as a "key trafficker" of AMR genes between *Klebsiella* species and other Enterobacterales, illustrating its importance to AMR spread and development (8). As carbapenems are considered one of the last resort treatments for multidrug-resistant (MDR) KP, i.e., isolates resistant to 3 or more drug classes (9), the global increase in carbapenem resistance (10) presents a threat to public health. The situation is aggravated by the isolation of colistin-resistant KP (11) since colistin is used as a last-line antibiotic for treating carbapenem-resistant KP. Global MDR high-risk lineages such as ST14, ST15, ST147, ST307, and ST607 have been identified and have spread rapidly across the globe increasing the need for global AMR surveillance.

In Kenya, several studies have indicated an emergence of the clonal spread of MDR KP and horizontal transfer of AMR genes (6,12–15). Increased use of 3rd generation cephalosporins in the

early 2000s has increased extended-spectrum beta-lactamase (ESBL)-producing Enterobacterales, the most prevalent of which in Kenya are CTX-M-15 and SHV (10,12,16,17). With the rise in ESBL-producing Enterobacterales in Kenya, carbapenem use is increasingly leading to the emergence of carbapenem-resistant Enterobacteriaceae (CRE). In 2011, Poirel, et al. were the first to detect CRE in Kenya from urine samples bearing the New Delhi Metallo- β -lactamase (NDM-1) carbapenemase (15). In 2017, there were reports of KP isolates that encoded *bla_{NDM-1}* and *bla_{SPM}* carbapenemase genes (14) and isolates recovered from bacteremias bearing the pNDM-MAR-like plasmid backbone that has been shown to carry the *bla_{NDM}* gene (6). More recently, Musila et al. (2021) identified KP isolates with the *bla_{OXA-181}* carbapenemase gene. In addition, KP resistance to aminoglycosides, tetracyclines, chloramphenicol, and fluoroquinolones has also been observed in Kenya, typically associated with ESBL-production in MDR (6,10). Aminoglycosides are widely used to treat bacterial infections due to the ease of administration and access in Kenya (18). Musila et al. (2021) also reported the 16S rRNA methyltransferase genes, *rmtF*, and *rmtC*, in KP isolates which confer pan-aminoglycoside resistance. Resistance to chloramphenicol and sulfonamides is high in part due to its use as a first-line treatment option for enteric infections such as typhoid and HIV prophylaxis in Kenya (10).

In addition to antimicrobial resistance, KP possesses virulence genes that enhance its ability to cause infections, increase cell fitness, and evade the host immune system. KP colonizes host cells using adhesins such as fimbriae and pili (19). The production of a robust capsular polysaccharide confers resistance to host immune cells along with the O-antigen portion of the liposaccharide (LPS). KP attacks rival bacteria and eukaryotic cells by injecting potent endotoxins using type VI secretion machinery (20). Highly virulent KP increases the expression of *magA*, *rmpA*, and *rmpA2* genes linked to the mucoid phenotype for hypervirulence (21). Other mechanisms include the use of allantoin for a carbon and nitrogen source, the use of efflux pumps to eject antibiotics (22), and the capture of iron

molecules from the host cells using siderophores (aerobactin, salmochelin, yersiniabactin) (23). Although some studies in Kenya have identified KP lineages ST11, ST15, and ST17, associated with hospital outbreaks (6,13), and the high-risk MDR ST147 (24), few studies have examined virulence genes in Kenyan KP isolates (13).

A clearer understanding of KP sequence types (STs) circulating within the community and healthcare systems across Kenya and the diversity and distribution of AMR and virulence genes would facilitate the monitoring and control of high-risk clones that are potentially hypervirulent and/or multidrug-resistant. Given the public health and clinical importance of KP and the knowledge gaps in Kenya, this study set out to examine KP isolates across Kenya and describe: 1) the sequence types and their distribution across Kenya, 2) the antimicrobial resistance phenotypes, and 3) the AMR and virulence genes present in the KP isolates.

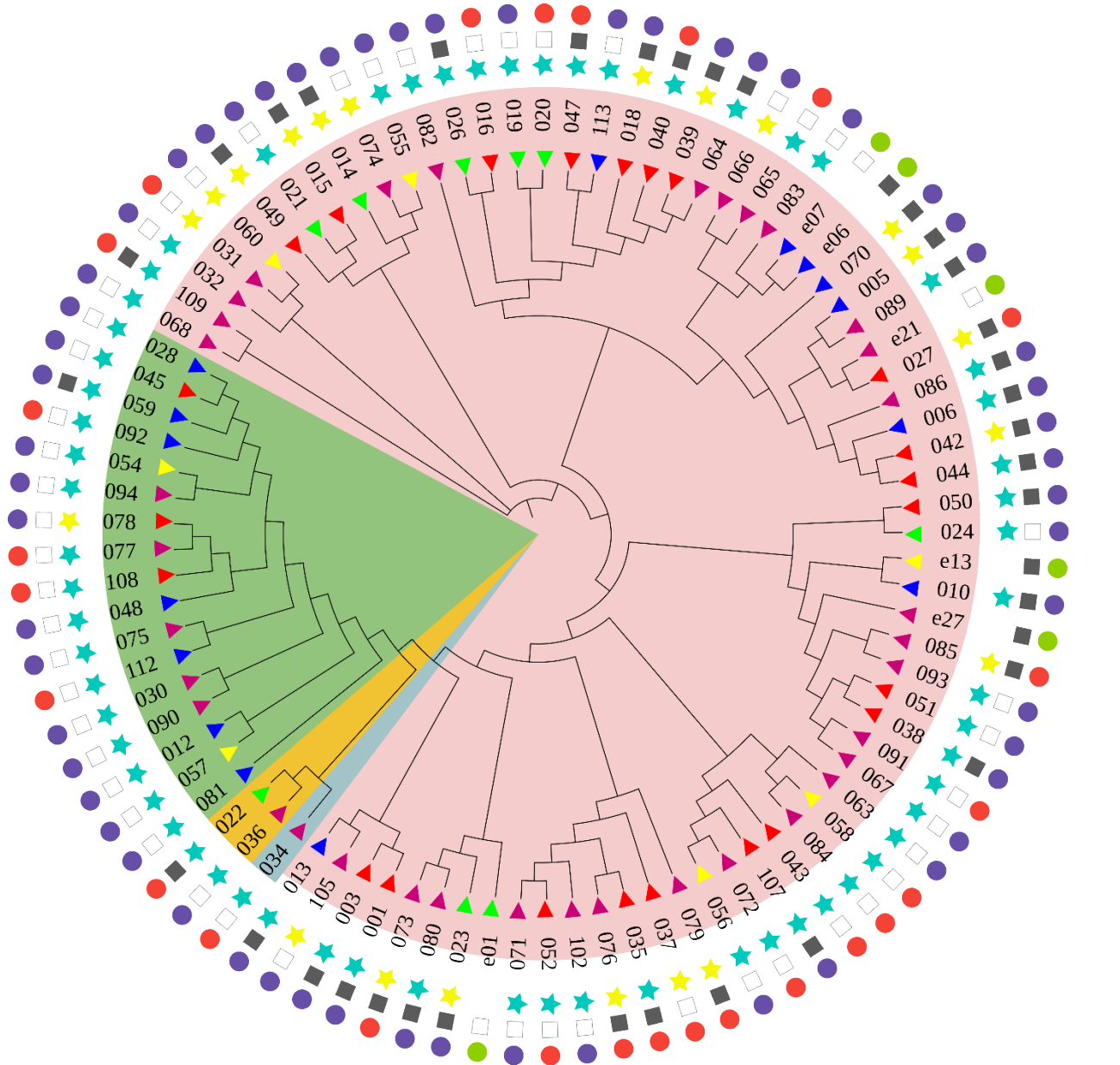
RESULTS

Epidemiological and clinical characteristics of *K. pneumoniae* isolates

Clinical samples were collected from skin and soft tissue infections (SSTIs) (64%, 57/89) and urinary tract infections (UTIs) (29%, 26/89), and the hospital environment (7%, 6/89) from five counties in Kenya: Kisumu (39%, 35/89), Nairobi (26%, 23/89), Kisii (17%, 15/89), Kilifi (10%, 9/89), and Kericho (8%, 7/89). Sixty-two isolates were isolated from community-acquired (CA) infections, while 21 were from healthcare-associated (HA) infections. Thirty-seven isolates (42%) are MDR while 52 (58%) were non-MDR.

Of the four members of the *K. pneumoniae* Species Complex (2), *K. pneumoniae subsp. pneumoniae* represented the largest proportion of all isolates at 79% (70/89), with 44 recovered from SSTIs, 20 recovered from UTIs, and 6 from the hospital environment. This phylogroup had the largest number

of MDR isolates (39%). The second most represented phylogroup was *K. variicola subsp. variicola* (18%, 17/89) with 15 isolates recovered from SSTIs and 2 isolated from UTIs. There was only one MDR isolate (kkp059) in this category. The least represented phylogroups were *K. quasipneumoniae subsp. quasipneumoniae* (2%, 2/89) and *K. quasipneumoniae subsp. similipneumoniae* (1%, 1/89) (Figure 1). Among the isolates from these minor subspecies, kkp022 and kkp034 were isolated from a UTI, while kkp036, the only MDR in this category, was recovered from an SSTI. All *K. quasipneumoniae subsp. quasipneumoniae*, *K. quasipneumoniae subsp. similipneumoniae*, and *K. variicola subsp. variicola*, except for one isolate (kkp078), were from community-acquired infections from different geographical locations (Figure1). There was no evident geographical clustering of all the phylogroups by county or infection types.



Community or Hospital Acquired Infection

- ★ Community-acquired infection
- ★ Hospital-acquired infection

Clinical presentation

- Skin and soft tissue infection
- Urinary tract infection
- Hospital environment

Source of KP isolates by counties

- ▲ Nairobi
 - ▲ Kisii
 - ▲ Kilifi
 - ▲ Kericho
 - ▲ Kisumu
- MDR status**
- MDR
 - non-MDR

KP isolates classified by phylogroups

- *Klebsiella pneumoniae* subsp. *pneumoniae*
- *Klebsiella variicola* subsp. *variicola*
- *Klebsiella quasipneumoniae* subsp. *quasipneumoniae*
- *Klebsiella quasipneumoniae* subsp. *similipneumoniae*

Figure 1: Circular cladogram showing epidemiological and clinical characteristics of *K. pneumoniae* isolates (n= 89). The color shading indicates the clustering of the isolates by phylogroups: *Klebsiella pneumoniae* subsp. *pneumoniae* (pink), *Klebsiella quasipneumoniae* subsp. *similipneumoniae* (blue), *Klebsiella quasipneumoniae* subsp. *quasipneumoniae* (gold), and *Klebsiella variicola* subsp. *variicola* (green). The triangle symbols in the innermost ring represent the geographic source of the isolates: Nairobi (red), Kisii (blue), Kilifi (green), Kericho (yellow), and Kisumu (purple). The star symbols represent the isolates recovered from community-acquired (blue) or healthcare-associated infections (yellow). The square symbols represent the multidrug resistance status of the isolates as either multidrug-resistant (black) or non-multidrug-resistant (white). The circle symbols in the outermost ring represent the clinical presentation of the isolates, i.e., skin and soft tissue infections (purple), urinary tract infection (red), and the hospital environment (green).

Genomic characteristics of *K. pneumoniae* isolates

Draft genomes were generated from the 89 isolates: 40 via Illumina short-read sequencing and 49 via MinION-based long-read sequencing. The sizes of the draft genomes ranged from 5.2 to 5.9 Mb with an average G+C content of 57.27%, typical of *K. pneumoniae* genomes (38) (Table S1). The average N50 for the short and long reads was 226,402 and 5,147,285 base pairs, respectively. The isolates had 0 - 8 plasmid replicons, averaging 3 per isolate. The highest number of plasmid replicons were in genomes kkp001 (8), kkp018 (8), and kkp0e21 (8) (Table S2), whereas five genomes had no predicted replicons: kkp012, kkp030, kkp070, kkp102, and kkp112. The most abundant plasmids replicon types identified belonged to the Col and Inc family (particularly the IncF type) (Figure 2). The other Inc-like plasmid replicons identified were IncR, IncH, IncX, IncC, IncN, IncM, and IncY. Seven types of Col plasmid replicons, the second most represented type, were identified, dominated by

Col(pHAD28) (Figure 2). Other plasmid types identified included pKP1433 and rep_KLEB_VIR in kkp056 in kkp043 genomes, respectively.

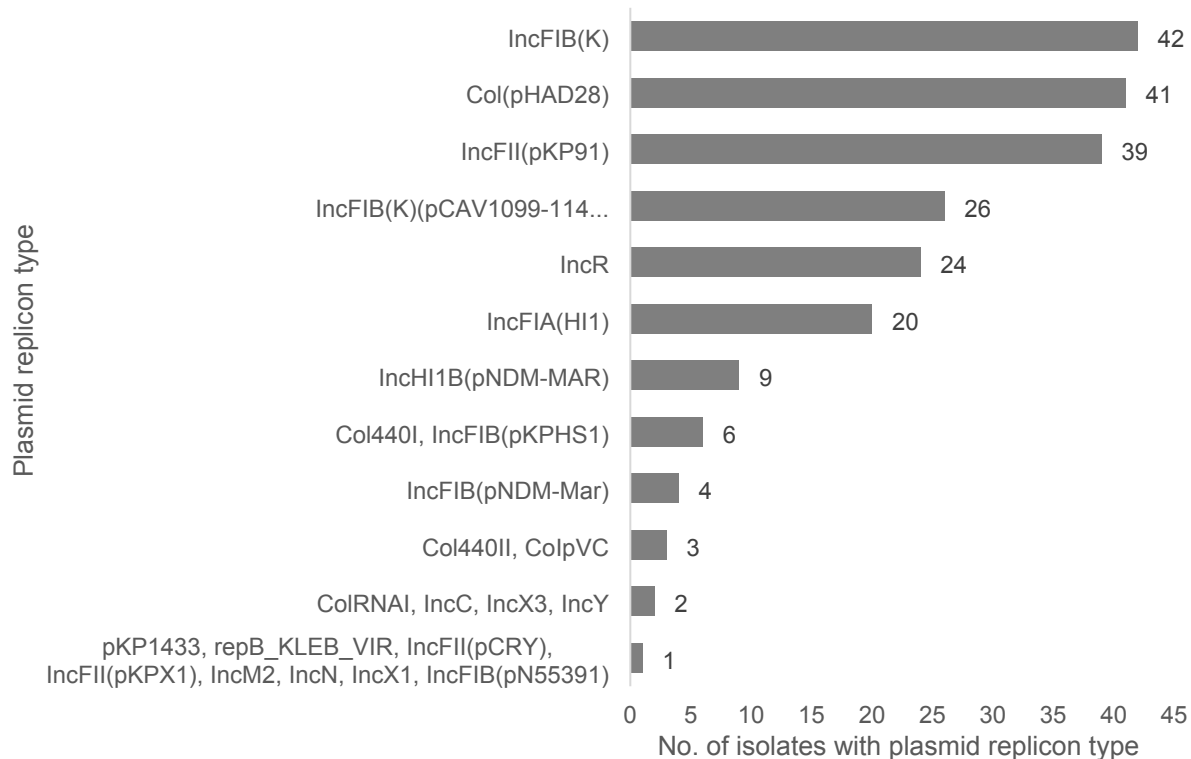


Figure 2. The types and number of plasmid replicons identified in the Kenyan *K. pneumoniae* isolates (N=89)

Multilocus sequence types and distribution of *K. pneumoniae* isolates

The STs could only be assigned to 57% (51/89) of the isolates. The 38 unassigned isolates were not typeable due to assembling errors or inadequate genome coverage. The multilocus sequence types (STs) of the KP isolates were diverse, with thirty-eight different STs identified. STs that were represented by more than one isolate were ST15 (4/89), ST17 (3/89), and ST607 (3/89 each); and two isolates each represented the ST14, ST37, ST39, ST48, ST147, and ST307 lineages (Figure 3). The remaining 29 sequence types were represented by a single isolate and were geographically distributed

as follows: Kisumu (n=17) - ST20, 45, 101, 198, 336, 391, 751, 1927, 2010, 3717, 3397, 3609, 5594, 5595, 5596, 5598, 5599; Nairobi (n=6) - ST55, 219, 966, 1786, 3692, 5600; Kisii (n=4) - ST25, 711, 3717, 5597 and Kilifi (n=2) - ST364 and 5593. Eight isolates had novel allelic profiles assigned and deposited in the *K. pneumoniae* MLST database (<https://bigsd.b.pasteur.fr/>) (Table 1). There was no evident clustering of STs by infection type or ESBL and MDR status. Kisumu had the highest number of distinct STs (23), followed by Nairobi (12), Kisii (6), Kilifi (3), and Kericho (2). The high-risk lineages, ST14, ST15, ST17, ST307, and ST607, were concentrated in the biggest cities – Kisumu and Nairobi. Global high-risk strains ST14, ST15, ST307, and ST607, were predominantly from the *Klebsiella pneumoniae subsp. pneumoniae*.

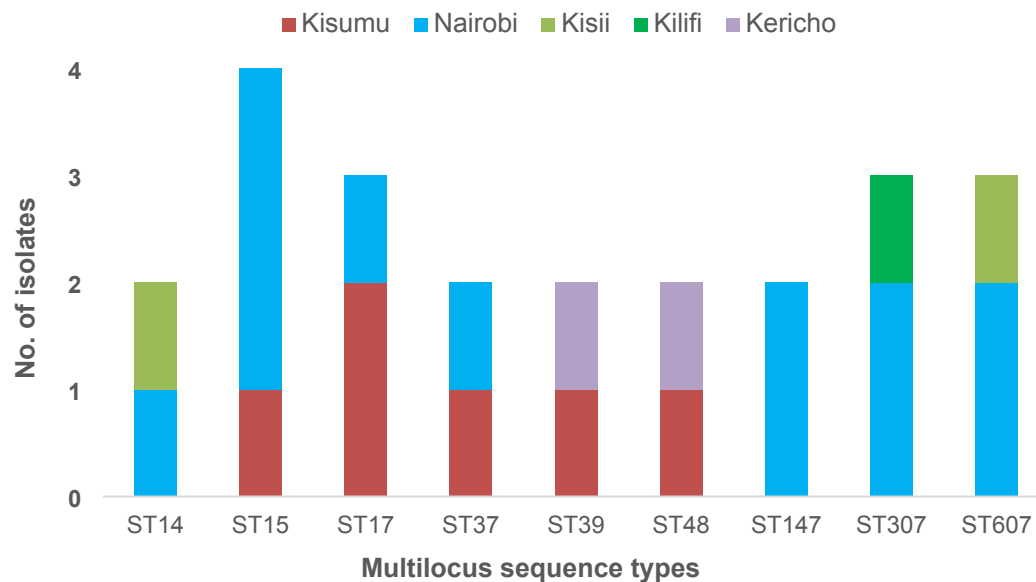


Figure 3. Distribution of the most abundant sequence types of the *K. pneumoniae* isolates by county.

Table 1. Allelic profiles of *K. pneumoniae* isolates with novel multilocus sequence types

Isolate ID	BIGSdb ID	Species	MLS T	gap A	inf B	mdh	pgi	pho E	rpo B	tonB
kkp022	16011	<i>K. quasipneumoniae</i>	5593	17	19	39	39	552	21	262
kkp034	16017	<i>K. quasipneumoniae</i>	5594	18	22	56	16	556	13	51
kkp075	16032	<i>K. variicola</i>	5595	45	18	21	10	455	22	786
kkp076	16033	<i>K. pneumoniae</i>	5596	2	9	2	1	13	1	787
kkp081	16037	<i>K. variicola</i>	5597	16	24	21	40	106	17	67
kkp090	16041	<i>K. variicola</i>	5598	16	18	21	33	55	17	341
kkp091	16042	<i>K. pneumoniae</i>	5599	294	3	1	1	4	331	4
kkp108	16051	<i>K. variicola</i>	5600	306	24	21	27	47	22	188

ID - identity; MLST - multilocus sequence type, the seven housekeeping genes for *K. pneumoniae* strain typing (*gapA* - glyceraldehyde 3-phosphate dehydrogenase, *infB* - translation initiation factor 2, *mdh* - malate dehydrogenase, *pgi* - phosphoglucose isomerase, *phoE* - phosphoporphine E, *rpoB* - beta-subunit of Ribonucleic acid polymerase B, *tonB* - periplasmic energy transducer) (Diancourt, 2005); BIGSdb - *K. pneumoniae* MLST database.

Antimicrobial Resistance

Phenotypic resistance profiles.

Antibiotic susceptibility tests (AST) performed on the VITEK2[®] platform (Table S3) identified high levels of non-susceptibility to trimethoprim (57%, 51/89), ticarcillin/clavulanate (49%, 44/89), cefuroxime axetil (49%, 44/89), cefuroxime (48%, 43/89), cefixime (48%, 43/89), ceftriaxone (47%, 42/89), cefepime (46%, 41/89), aztreonam (47%, 42/89), tetracycline (37%, 33/89) and minocycline (34%, 31/89); moderate non-susceptibility to levofloxacin (19%, 17/89), moxifloxacin (20%, 18/89) and chloramphenicol (19%, 17/89); and low levels of non-susceptibility to tigecycline (4%, 4/89) and meropenem (2%, 2/89). All isolates were non-susceptible to piperacillin (Figure 4). Among the dataset, 41% (37/89) were classified as MDR, i.e., resistant to 3 or more drug classes. A large proportion (47%, 42/89) were ESBL-producing isolates (Figure 4), of which 30 isolates were MDR. One isolate, kkp001, was pan-resistant (resistant to all 16 antibiotics tested in the panel).

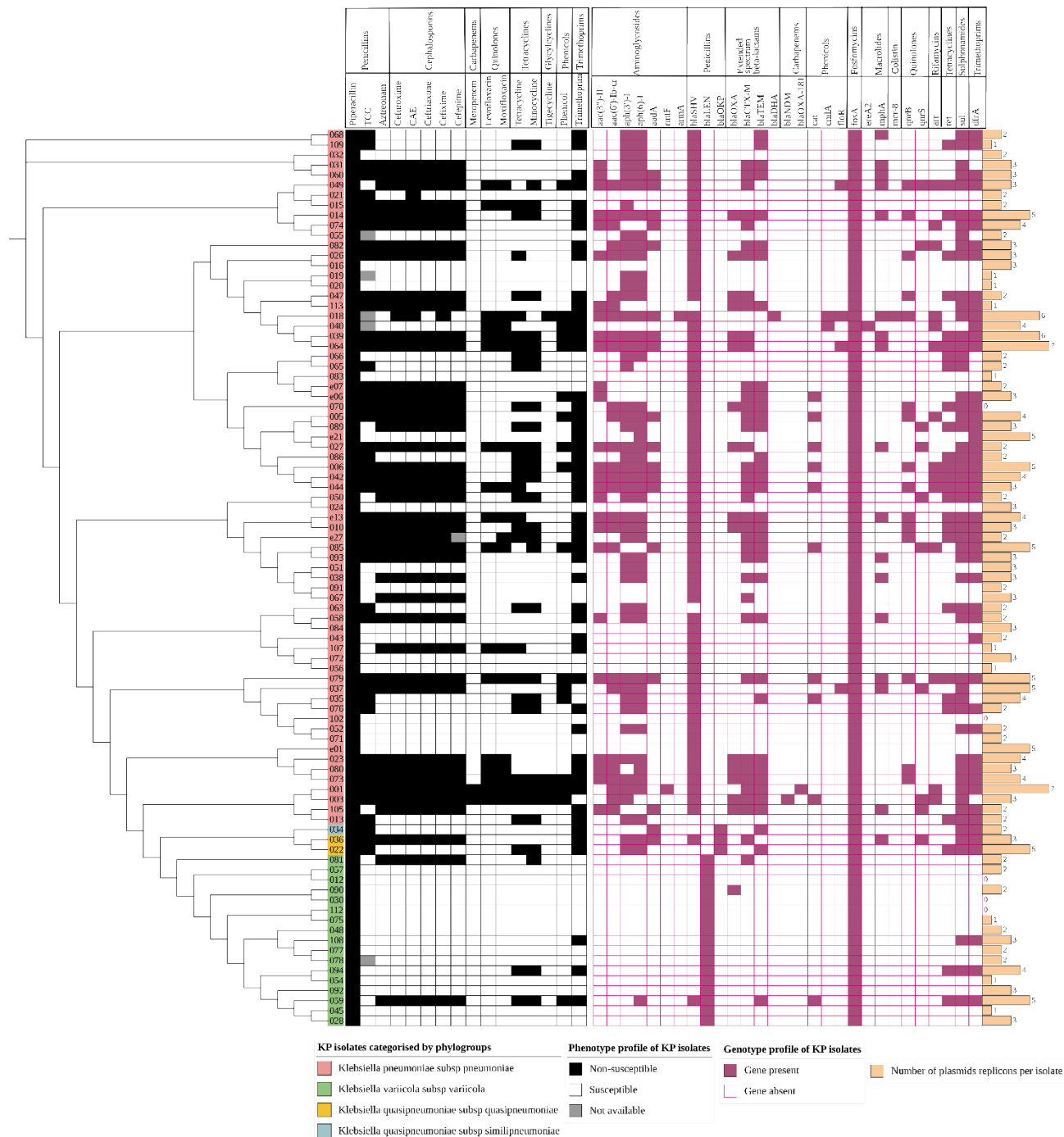


Figure 4. A heatmap of the phenotypic and genotypic profiles and plasmid replicon abundance of *K. pneumoniae* isolates (n=89). The cladogram on the left with colored labels on the edge indicates the clustering of the isolates by phylogroups: *Klebsiella pneumoniae* subsp. *pneumoniae* (pink), *Klebsiella quasipneumoniae* subsp. *similipneumoniae* (blue), *Klebsiella quasipneumoniae* subsp.

quasipneumoniae (gold), and *Klebsiella variicola subsp. variicola* (green). The phenotypic profile is represented as an isolate being non-susceptible (black) or susceptible (white) to the antibiotic indicated on the bottom column header (and the drug class it belongs to on the top column header). The grey square indicates an isolate whose phenotypic result was not available. The genotypic profile is represented as a gene present (purple) or absent (white with purple outline). The genes are indicated on the column header and the drug class on the top column header. The beige bar plot represents the number of plasmid replicons found in the isolates. CAE – cefuroxime axetil. TCC – ticarcillin/clavulanate.

Genetic determinants of resistance.

Comparison of the isolates' phenotypic and genotypic antimicrobial susceptibility results demonstrated high concordance in the trimethoprim, beta-lactam, and tetracycline antibiotic classes, as demonstrated in Figure 4. In particular, there was strong concordance among the KP isolates between the presence of an ESBL-CTX-M gene and non-susceptibility to beta-lactams and cephalosporins (Figure 4), *dfpA* gene with trimethoprim non-susceptibility, and *tet* genes with tetracycline non-susceptibility. Most of the genomes generated from long reads enabled the detection of circularized plasmids bearing AMR genes (Table 2). MDR isolates had more plasmid replicons than the non-MDR isolates which had only 0 - 3 plasmid replicons (Figure 4).

Table 2. Antimicrobial resistance and virulence genes identified in the plasmids of the *K. pneumoniae* isolates

Isolate ID	Plasmid ID	Plasmid Replicon	AMR genes	Virulence genes
------------	------------	------------------	-----------	-----------------

kkp001	kkp001_p00 2	IncFII(pKPX1), IncR	aph(3'')-ib, aph(6)-id, CTX-M-15, OXA-181, TEM-181, dfrA, sul2	
kkp005	kkp005_p00 2	IncFIA(HI1),Inc R	aac(6')-ib-cr, aph(3'')-ib, aph(6)-id, CTX-M-15, qnrB, TEM-181, aadA, arr3, CatII, dfrA, qacEdelta1, sul1, sul2	
kkp006	kkp006_p00 3	IncFIA(HI1), IncR	aac(6')-ib-cr, aph(3'')-ib, aph(6)-id, qnrB, aadA, arr3, CatII, dfrA, qacEdelta1, sul1, sul2, tetD	
kkp019	kkp019_p00 1	IncFIA(HI1)	aph(3'')-ib, aph(6)-id	mrkABCDFJ
kkp020	kkp020_p00 1	IncFIA(HI1)	aph(3'')-ib, aph(6)-id	mrkABCDFJ
kkp024	kkp024_p00 2	IncFIA(HI1)		mrkABCDFJ
kkp026	kkp026_p00 1	IncFIB(K), IncFII(pKP91)	aac(3)-iie, aac(6')-ib-cr, aph(3'')-ib, aph(6)-id, CTX-M-15, OXA-1, qnrB, TEM-181, dfrA, sul2, TetA	
kkp032	kkp032_p00 1	IncFIB(K)	aph(3'')-ib, aph(6)-id	mrkABCDFJ
kkp034	kkp034_p00 2	IncY	TEM-181, aadA, dfrA, qacEdelta1, sul1, sul2	
kkp036	kkp036_p00 2	IncN	SHV-134	

kkp037	kkp037_p00	IncC, IncFIB(K),	aac(6 ['])-ib, aph(3 ['])-ib, aph(3 ['])-ia, aph(6)-	
	1	IncFII(pKP91)	id, floR, mphA, qacEdelta1, sul1, sul2	
kkp037	kkp037_p00			
	2	IncX3	qnrS, SHV-134	
kkp039	kkp039_p00	IncFIB(K),	aadA, dfrA, mphA, qacEdelta1, sul1	
	1	IncFII(pKP91)		
kkp043	kkp043_p00	repB_KLEB_VI		iroBCDN,
	1	R		iucABCD, iutA, rmpA, rmpA2
kkp043	kkp043_p00			
	2	IncFIA(HI1)	dfrA, qacEdelta1, sul1	
kkp051	kkp051_p00	IncFIB(K)(pCAV		
	1	1099-114), Col(pHAD28), IncR	aph(3 ['])-ib, aph(6)-id	
kkp052	kkp052_p00	IncR	aph(3 ['])-ib, aph(6)-id, dfrA, qacEdelta1,	mrkABCDF
	3		sul1, sul2	
kkp066	kkp066_p00	IncFIB(K),	aph(3 ['])-ib, aph(6)-id, SHV-120, sul2,	
	1	IncFII(pKP91)	tetD	
kkp068	kkp068_p00	IncFIB(K),	aph(3 ['])-ib, aph(6)-id, TEM-181, dfrA,	
	1	IncFII(pKP91)	mphA, sul2	
kkp083	kkp083_p00			
	1	IncFIB(K)		astA, iroBDEN

kkp090	kkp090_p00	IncFIB(K),	OXA-926
	1	IncFII(pKP91)	
kkp094	kkp094_p00	IncFIA(HI1)	ant(3")-iia, dfrA, qacEdelta1, sul1, tetA
	2		
kkp108	kkp108_p00	IncFII(pKP91)	dfrA, qacEdelta1, sul1
	2		
kkp0e13	kkp0e13_p0	IncFII(pKP91)	aac(3)-iie, aac(6')-ib-cr, aph(3")-ib, aph(6)-id, CTX-M-15, OXA-1, qnrB, TEM-181, dfrA, sul2, tetA
	01		
kkp0e13	kkp0e13_p0	IncM2	aac(3)-IId, CTX-M-15, TEM-181, mphA
	02		
kkp0e21	kkp0e21_p0	Col(pHAD28)	aph(6)-id, dfrA
	04		
kkp0e27	kkp0e27_p0	IncFIB(K),	aph(3")-ib, aph(6)-id, CTX-M-15, qnrB,
	01	IncFII(pKP91)	TEM-181, dfrA, sul2, tetA
kkp0e7	kkp0e7_p00	IncFIB(K),	aac(3)-iie, CTX-M-15, TEM-181
	1	IncFII(pKP91)	

Table 2 legend: ID - identity

Beta-lactamase resistance genes. In the beta-lactam antibiotic class, genes for penicillinases, ESBLs, and carbapenemases were identified, summarized in Table S4. Each phylogroup demonstrated a distinct chromosomal penicillinase (Table S4), i.e., *Klebsiella pneumoniae* contained bla_{SHV}, *Klebsiella quasipneumoniae* contained bla_{OKP}, and *Klebsiella variicola* contained bla_{LEN}, consistent

with previous studies (8). However, some isolates carried a different additional penicillinase which was observed to have been acquired via a plasmid, e.g., kkp036 (*K. quasipneumoniae*) obtained a bla_{SHV-134} from an IncN plasmid (Table 2). There was a high diversity of plasmid-mediated ESBL genes in the isolates: bla_{CTX-M-15} (40%, 36/89), bla_{CTX-M-98} (1%, 1/89), bla_{CTX-M-14} (1%, 1/89), bla_{TEM181} (39%, 35/89), bla_{OXA} (18/89), and the less common bla_{LAP2} and bla_{SCO1}. Two MDR isolates had carbapenemase genes: bla_{NDM1} (kkp003) and bla_{OXA181} (kkp001). Isolates kkp013 and kkp063 did not demonstrate any β -lactamase genes, and they were unsurprisingly ESBL-negative and non-MDR. Most isolates possessed at least one and at most six β -lactamase genes (Table S4). There were 42 ESBL-positive isolates, and 38 of them had a bla_{CTX-M} co-harbored with two or more other types of ESBL genes (Figure 4).

Non-beta-lactamase resistance genes. A previously described (11) colistin-resistant isolate, kkp018, carried an *mcr-8*, a bla_{DHA1}, and 20 additional AMR genes (Table S4). Sixty-seven percent of the isolates (60/89) carried aminoglycoside-modifying enzymes (AME) genes i.e. *ant(3')* (or *aadA*) encoding aminoglycoside nucleotidyltransferases; *aph(3')*, *aph(4)*, and *aph(6)* encoding aminoglycoside phosphotransferases; *rmtF* and *armA* encoding 16S rRNA methyltransferases; and *aac(3)* and *aac(6')-Ib-cr* encoding aminoglycoside acetyltransferases (Figure 4, Table S4). The *aac(6')-Ib-cr* gene also induces fluoroquinolone resistance. The genes associated with pan-aminoglycoside resistance were found in two isolates: *armA* (kkp018) and *rmtF* (kkp001). The genes for efflux pumps associated with aminoglycoside resistance (*arnT*, *crcB*, *acrD*, *baeR*, *cpxA*) were well-conserved among all the isolates. In addition, the common MDR efflux pump genes were identified: *LptD*, *CRP*, *H-NS*, *KpnEFGH*, *acrAB*, *marA*, *mdtBC*, *msbA*, and *ramA*.

Three mechanisms for quinolone resistance were detected. First, plasmid-mediated quinolone resistance (PMQR) genes (*qnrB* or *qnrS1*) identified in 26 isolates. Second, chromosomal-encoded

efflux pumps (*emrR*, *oqxA*, and *oqxB*) genes constitutive in all isolates. Third, gene mutations were detected in gyrase A (*gyrA*) - Ser83Phe, Asp87Asp, and Ser83Ile - and Deoxyribonucleic acid topoisomerase IV subunit A (*parC*) - Ser80Ile (Table S6), which are involved in DNA synthesis. Twenty-nine isolates (32%, 28/89) had the tetracycline-resistance genes, *tetA* or *tetD*. Fifteen isolates (17%, 15/89) carried the chloramphenicol resistance genes *catI*, *catII*, and *catB3* (encoding chloramphenicol acetyltransferases) as well as *floR* and *cmlA* (encoding chloramphenicol efflux pumps). Resistance to sulphonamide and trimethoprim, administered as co-trimoxazole, was mediated by the *dfrA* trimethoprim resistance gene and *sul* sulphonamide resistant gene, found in 54 and 55 isolates, respectively. Resistance to other drug classes was conferred by: fosfomycins - *fosA*; macrolides - *mphA*, *mphE*, *msrE*, and *ereA2*; rifamycins - *arr2* and *arr3*; and even antiseptics - *qacEA1* and *qacL*.

Virulence factors associated with the *K. pneumoniae* isolates.

Known virulence factors involved in adherence, biofilm formation, capsule synthesis regulation, mucoid phenotype regulation, immune evasion, secretion system, serum resistance, siderophores expression (enterobactin, yersiniabactin, aerobactin, and salmochelin), efflux pump expression, allantoin utilization, and enterotoxin generation were detected among the isolates (Figure 5). The most ubiquitous were the chromosomal genes *fim*, *mrk*, and *ecp* for adherence and biofilm formation, which were present in all isolates except kkp043 which lacked the *fim* genes. In addition, some isolates carried multiple copies of the *mrk* genes in plasmids (Table 2). Other genes identified in all the isolates were those for serum resistance factors that determine the 'O-antigen' lipopolysaccharide serotype, the immune evasion factors which determine the polysaccharide capsule (*K antigen*) type, capsule synthesis regulation (*rca*), efflux pump expression (*acrAB*), and enterobactin (*ent*, *fep*) (Table S5). In addition, all isolates possessed type VI secretion system loci genes except kkp034.

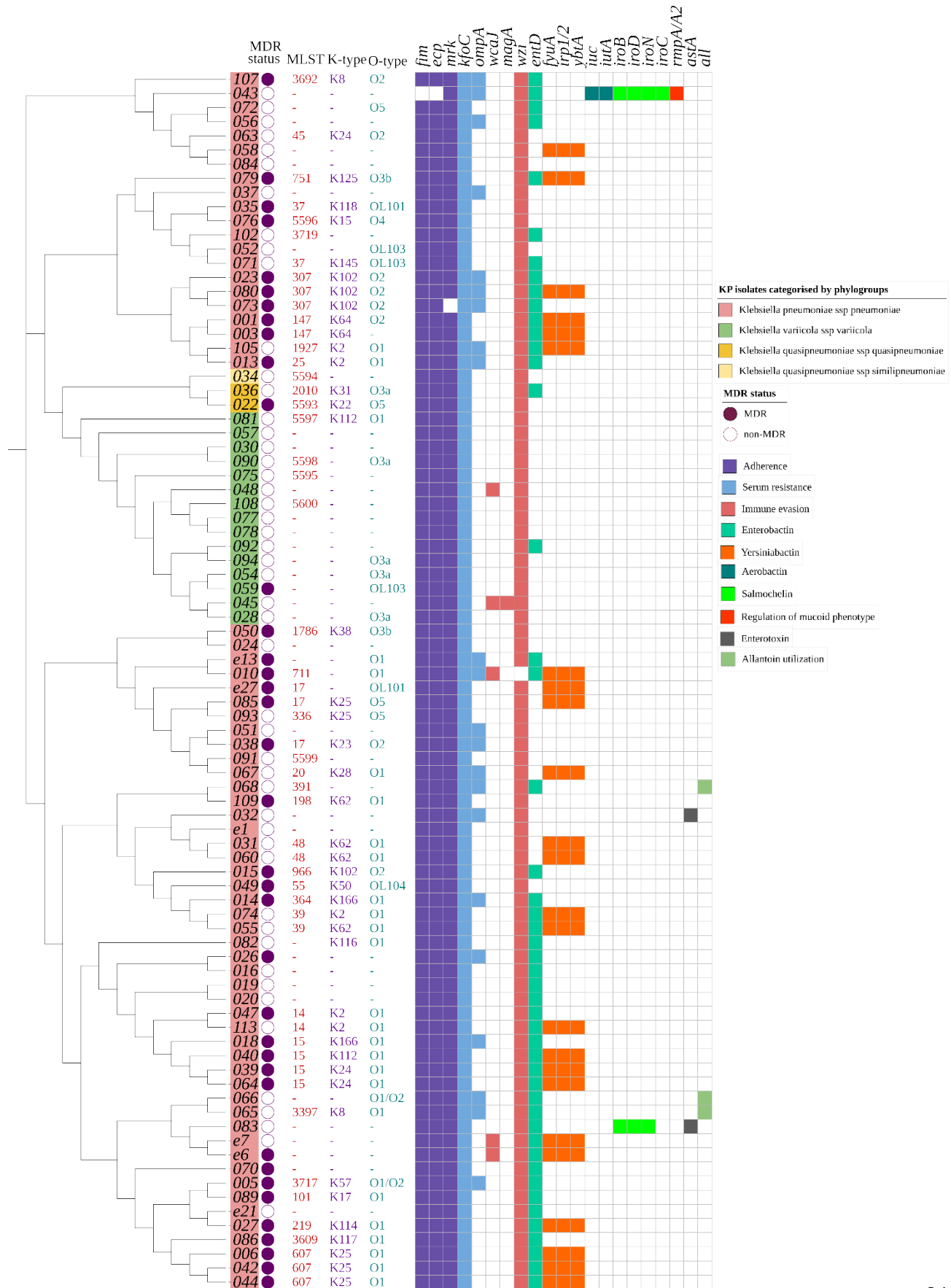


Figure 5. A heatmap of the multidrug resistance status, ST, serotype, and virulence gene content of *K. pneumoniae* isolates (n=89). The cladogram on the left with colored labels on the edge indicates the clustering of the isolates by phylogroups: *Klebsiella pneumoniae subsp. pneumoniae* (pink), *Klebsiella quasipneumoniae subsp. similipneumoniae* (blue), *Klebsiella quasipneumoniae subsp. quasipneumoniae* (gold), and *Klebsiella variicola subsp. variicola* (green). The circular symbols represent the multidrug resistance status of the isolates as either multidrug-resistant (purple) or non-multidrug-resistant (white). The serotypes assigned to the isolates are indicated as follows: multilocus sequence type (MLST) (red), capsule type (purple), and O type (green). The virulence profile is represented as a gene present (color) or absent (white) for factors: adherence (purple), serum resistance (blue), immune evasion (pink), enterobactin (green), yersiniabactin (orange), aerobactin (teal), salmochelin (luminous green), regulation of mucoid phenotype (red), enterotoxin (gray), and allantoin utilization (pale green). (-) indicates unassigned serotypes.

This study identified no evident clustering of capsule and lipopolysaccharide types based on geographical locations or clinical presentation. There were 10 different O-loci types identified (O1, O2, O3a, O3b, O4, O5, OL101, OL103, and OL104) in the 57 assigned isolates, whereby O1 (46%, 26/57) and O2 (19%, 11/57) were the most common and clinically significant. There were 24 different K-types in the 45 assigned isolates, and the most abundant were K2 (11%, 5/45), K25 (11%, 5/45), K102 (9%, 4/45), K62 (9%, 4/45), and K24 (7%, 3/45).

The *ybt* loci, identified in 24/89 isolates, encode for yersiniabactin siderophores found within conjugative transposons in the chromosome. Based on a new typing scheme (39) updated in the kleborate pipeline (34), this study identified four distinct *ybt* types: *ybt14* found within ICEKp5, *ybt15* in an ICEKp11, *ybt16* in an ICEKp12, and *ybt9* within an ICEKp3. In addition, the analysis revealed

three isolates (Figure 5) with chromosomally encoded genes for allantoin utilization and two isolates (kkp012 and kkp045) (Figure 5) with *magA* and *K2* capsule types linked to hypervirulence (40).

Several isolates were unique in having plasmid-encoded virulence genes. For example, a hypervirulent isolate (hvKP), kkp043, was identified bearing the repB_KLEB_VIR plasmid containing *rmpA* and *rmpA2* genes, which regulate the expression of the mucoid phenotype, salmochelin (*iroBCDN*), and aerobactin (*iucABCD*, *iutA*). In addition, Kkp083 also demonstrated an *iroBDEN* cluster and a heat-stable enterotoxin (*astA*) gene carried in an IncF(K)_1 plasmid, in contrast to the chromosomally-bound *astA* gene in kkp032. This study did not identify MDR hypervirulent isolates with AMR and hypervirulent genes (41). Furthermore, the MDR isolates did not carry factors associated with hypervirulence, while the hypervirulent isolates were mostly antibiotic susceptible, i.e., they were non-MDR and ESBL-positive (Figure 5).

DISCUSSION

This study characterized 89 isolates based on their clinical, geographic, genotypic, and phenotypic characteristics. It was noted that all the four recognized phylogroups, were represented with *Klebsiella pneumoniae subsp. pneumoniae* isolates predominating, consistent with findings from other studies (42–44). Some differences were observed in the characteristics of the phylogroups. For example, *Klebsiella variicola subsp. variicola* isolates are typically linked to bloodstream infections and UTIs (45,46); however, those identified in this study were mainly associated with SSTIs (Figure 1) and were largely antibiotic susceptible (Figure 4). In previous studies, *Klebsiella quasipneumoniae subsp. similipneumoniae* isolates were linked to nosocomial infections such as UTIs (47,48). Yet, in this study, one isolate, kkp034, caused a community-acquired SSTI, potentially indicating a broader

distribution of this phylogroup in Kenya as found in other countries, such as sewage in Brazil (49) and a turtle in China (50).

The lineages identified in this study were highly diverse, and most of them were local strains that have not been described in other countries. Globally disseminated high-risk lineages such as ST14, ST15, ST307, and ST607, were identified (Figure 3). These high-risk lineages are bacterial pathogens that easily acquire and disseminate antimicrobial resistance (51). For example, ST14, ST15, and ST147 have been linked to the spread of carbapenemase resistance genes in many countries (52,53). In this study, the two extensively drug resistant (XDR) ST147 strains carried a *bla*_{OXA-181} (kkp001) and a *bla*_{NDM} gene (kkp003), respectively, while the MDR ST14/15 strains carried several ESBL genes. Notably, kkp018 (ST15) harbored a mobile colistin-resistant gene, *mcr-8*, and an AmpC beta-lactamase gene, *bla*_{DHA} (Figure 4). ST307 and ST607 are emerging strains linked to ESBL infections (Long, et al., 2017), and they were observed in six MDR strains isolated from SSTIs and UTIs (Figure 1 and 5). ST17 is a regional strain that has been implicated in outbreaks in Kilifi (6), Mwanza (54), and Kilimanjaro (55). This study identified three MDR and ESBL positive ST17 strains, isolated from a community-acquired SSTI, a nosocomial UTI, and a hospital environmental swab (Figures 1 and 5). High-risk clones have also been linked to specific serotypes, e.g., ST607-K25, responsible for a nosocomial outbreak at a neonatal intensive care unit in a hospital in France (56). Significantly, this study identified three MDR and ESBL-positive ST607-K25 clones associated with SSTIs (Figures 5).

The presence of these high-risk strains in Kenya indicate the significant clinical and public health threat they pose. However we noticed that this threat was highest in Kisumu and Nairobi, the two largest cities in the country, where most of the global lineages (79%, 11/14) were identified. These cities are travel hubs with large referral hospitals serving patients from a wide geographical area locally and global travelers. The diverse patient population could explain the concentration of local,

regional and global lineages, the great strain diversity, and novel alleles in isolates from the two counties compared to Kisii, Kilifi, and Kericho counties.

Plasmids are the main vehicle for AMR gene transmission and in this study we found that a majority of the AMR genes were carried in plasmids, particularly IncFIB(K) and IncFII(pKP91) (Table 2), which are common among Enterobacterales. The predominant plasmid replicon types belonged to the diverse Incompatibility (Inc) family (57), whose host range is mainly limited to Enterobacterales (58) known to have large multi-replicon plasmids (59). The multi-replicon IncF plasmids contain the FII, FIA, and/or FIB replicons (Table 2 and S2) which account for their high abundance (Figure 2). Unsurprisingly, antibiotic susceptible KP isolates (kkp012, kkp030, kkp102, and kkp0112) contained few or no plasmids and were ESBL negative and non-MDR. The MDR kkp070 was exceptional because although it possessed no plasmid replicons, it had several resistance genes integrated into a genetic island in the chromosome. These integration events were not uncommon, as plasmid-associated AMR genes were detected in the chromosome of several isolates: kkp005 and kkp006 carried a *bla*_{CTX-M-15} gene, kkp109 had a *dfrA14* trimethoprim resistant gene, and kkp001 possessed several AMR genes (*aac(6')-Ib9*, *bla*_{CTX-M-15}, *arr-2*, and *rmtF*). The integration of AMR genes into the chromosome is alarming because the resistance is transferred clonally, becomes part of the core genome, and increases the spread and prevalence of non-susceptible KP lineages.

Although the col plasmid family were the second most dominant group, the majority of col-like plasmids did not contain any resistance or virulence genes, except for the abundant colE1 type, Col (pHAD28), which typically carries *qnrS1* and other AMR genes (58) as observed in kkp0e21 (Table 2). In addition, col plasmids benefit KP because they produce bacteriocins lethal to rival bacteria. One of the other plasmid families identified was the pK1433 (kkp056) and is associated with the *bla*_{KPC2} gene (60), which provides a mechanism for carrying and spreading KPC-type genes. The

isolates with plasmids carrying a bla_{CTX-M} gene also carried bla_{OXA}, bla_{SHV}, or bla_{TEM} genes, implying that these resistance genes are transferred together (e.g., ESBL-positive kkp081 and kkp059 isolates possessed bla_{CTX-M-15}, bla_{SHV-134}, and bla_{TEM181} genes). The most intriguing isolates were the ESBL-positive isolates (kkp015, kkp070, and kkp107) which only contained the bla_{SHV} penicillinase gene. We hypothesize that the ESBL phenotypes in these isolates may have been due to alternative resistance mechanisms such as up-regulation of MDR efflux pumps. The expression of genes encoding MDR efflux pumps is noteworthy because their activity induces resistance of different antibiotic classes non-specifically and can cause phenotypic and genotypic discordance.

Examination of the virulence factors among the KP phylogroups highlighted one main difference. *K. quasipneumoniae subsp similipneumoniae* did not demonstrate the Type VI protein secretion system found in the other phylogroups (Table S5); instead, it possessed the Type II secretion as previously noted (61). Siderophores were the most significant virulence genes detected. The ubiquitous enterobactin scavenges iron from host cells; however, their activity is neutralized by human lipocalin-2 protein (62). In response, KP uses the more virulent yersiniabactin to bind iron and other heavy metals like copper to avoid metal toxicity and phagocytosis using reactive oxygen species (63). According to Holt, et al. (2015), acquiring yersiniabactin is usually the first step in accumulating more potent siderophores to make them more invasive. Yersiniabactin genes were found among the *K. pneumoniae subsp pneumoniae* isolates causing various clinical infections and from diverse geographical locations. Most of them were MDR and ESBL positive, making their infections persistent and antibiotic-resistant and likely contributing to their dominance over the other phylogroups.

Classical hypervirulent KP (hvKP) isolates are generally antibiotic susceptible (64), and they are characterized by having *rmpA/A2* and *magA* virulence factors as well as the K2 capsule type (53).

This study identified one potentially hypervirulent isolate (kkp043), which carried *rmpA* and *rmpA2* genes. In addition, it also carried genes for aerobactin and salmochelin that were carried on a repB_KLEB_VIR plasmid (Table 2). A trade-off between virulence and antibiotic resistance was demonstrated in this potentially hypervirulent isolate (kkp043) as it was non-MDR and ESBL-negative and had only one other plasmid bearing the IncFIA(HI1) replicon, *dfrA5*, and *sulI* genes (Table 2). Additional examples were the two isolates (kkp012 and kkp045) with *magA* genes which were ESBL-negative and non-MDR. Furthermore, non-MDR K2 strains possessed the *ybt* operon, which the MDR K2 strains lacked (Figure 5). Despite this, there is growing concern about the rise of MDR hvKP globally (39,65–68), which cause severe infections with few treatment options (69) emphasizing the significance of monitoring virulence characteristics of KP in Kenya.

The study had several limitations. The first was that the two sequencing technologies utilized had different strengths and weaknesses, which could introduce bias in the genomic analysis. The draft genomes from the long reads had fewer contigs (≤ 12) (Table S1) and were more contiguous, but they had less depth/coverage, while the short reads produced less contiguous draft genomes with greater depth (> 40) (Table S1). More contiguity enabled better plasmids reconstruction, while sufficient depth enabled better assignment of multilocus sequence types. The second limitation was that susceptibility tests were carried out on the Vitek2[®] platform using a limited number of antibiotics and were not verified using another phenotypic method. Nevertheless, there was good concordance between the phenotypic and genotypic results. Finally, *in vivo* tests were not conducted to confirm the virulence gene activity, so the virulence results are only predicted.

CONCLUSION

The findings of this study contribute in several ways to our understanding of the genotypic and phenotypic characteristics of Kenyan *K. pneumoniae* isolates. The multi-center approach provided

more nationally relevant data, unlike prior studies with fewer isolates from single sites. These findings describe a KP population with diverse sequence types, highly abundant and diverse resistance, and virulence profiles. In addition, the presence of high-risk clones in the major cities Nairobi and Kisumu enhances their transmissibility within and outside the country. Further research should be conducted to correlate the genotypic findings of virulence with phenotypic data, and additional analysis should investigate the genotypic environment of the acquired antimicrobial resistance genes to determine their risk of spread.

MATERIALS AND METHODS

Ethics Statement

Ethics approval for the study was obtained from the KEMRI Scientific and Ethics Review Unit, Nairobi, Kenya (KEMRI SSC# 2767) and the Walter Reed Army Institute of Research Institutional Review Board, Silver Spring, MD, USA (#2089). Written informed consent was obtained from each participant. The investigators have adhered to the policies for the protection of human subjects as prescribed in AR 70-25.

Study Site

The bacterial culture, DNA extraction, quantification, and Oxford Nanopore sequencing were conducted in the Kenya Medical Research Institute (KEMRI) - Center for Microbiology Laboratory. Illumina sequencing was performed at the Multidrug-Resistant Organism Repository and Surveillance Network (MRSN), Walter Reed Army Institute of Research (WRAIR). The bioinformatic analysis was conducted using the high-performance computing server at the Department of Emerging Infectious Diseases, USAMRD-Africa in KEMRI, Nairobi.

Study Samples

The study analyzed hospital environmental and clinical isolates of KP that were collected between May 2015 to March 2020 from eight hospitals in five counties in Kenya as part of an ongoing antimicrobial resistance surveillance study (KEMRI2767/WRAIR 2089) and an environmental study (KEMRI 3482/WRAIR 2416). The clinical samples were urine, wound swabs, and pus collected from consenting patients with suspected bacterial infections. The environmental samples were collected via swabs of high-touch areas in the participating hospitals. *Klebsiella pneumoniae* identification and antimicrobial susceptibility testing (AST) were performed on the Vitek2® system (bioMérieux, France) using the GN-ID and XN05-AST cards. The AST panel consisted of penicillins (piperacillin and ticarcillin/clavulanic acid), monobactam (aztreonam), cephalosporins (cefuroxime, cefuroxime axetil, cefixime, ceftriaxone, and cefepime), carbapenems (meropenem), fluoroquinolones (levofloxacin and moxifloxacin), tetracyclines (tetracycline and minocycline), glycylycine (tigecycline), phenicol (chloramphenicol) and trimethoprim. The AST results were interpreted according to CLSI guidelines (2018), and isolates were classified as either multidrug-resistant (resistant to 3 or more drug classes) or non-multidrug resistant and ESBL positive or negative.

DNA Extraction and Sequencing

Forty isolates were sequenced on an Illumina MiSeq platform at MRSN-WRAIR as previously described (24). The remaining 49 samples were sequenced using the MinION platform (Oxford Nanopore Technology). Forty-nine KP isolates were inoculated on Mueller Hinton Agar plates and incubated for 24 hours at 37°C. *Klebsiella pneumoniae* JH930422.1 was included as a positive control. Approximately 14×10^8 cells/mL at OD 600 of overnight bacterial cells were resuspended in nuclease-free water and centrifuged at 5,400g for 10 minutes to pellet the cells. Total DNA was then extracted using the DNeasy® UltraClean Microbial Kit (QIAGEN Inc., Netherlands) according to the manufacturer's instructions. DNA purity was determined on the Nanodrop One (ThermoFisher

Scientific) and quantified on the Qubit dsDNA fluorometer. For library preparation, the extracted DNA was end-repaired using the NEBNext® UltraII End Repair/dA-Tailing kit using the manufacturer's instructions. LSK 109 ligation kit, EXP-NBD 104 (1-12), and EXP-NBD 114 (13-24) Native Barcoding kits were used to barcode each DNA sample and adapters added. The DNA library was loaded onto a FLO-MIN106 R9.4.1 flowcell for sequencing based on the standard Oxford Nanopore Technology (ONT) 1D sequencing protocol launched in the MinKNOW v20.10.3 software. A quality control experiment was conducted to evaluate the Nanopore workflow by sequencing the lambda phage DNA on the FLO-MIN106 R9.4.1 flowcell for 6 hours as per the Lambda DNA control experiment protocol, and the sequences compared with the reference sequence (NC_001416.1). Guppy v4.4.2 was used to basecall and trim the barcodes and adapters from both ends of the reads.

De novo assembly of raw reads and database querying

The fastQ files were filtered to retain only those with a Q-score ≥ 7 . The previously sequenced paired-end Illumina reads were retrieved from the in-house server for downstream analysis. The adapters in the short pair-ended reads were trimmed using *Trimmomatic v0.39* (25). The trimmed Illumina reads were assessed for quality using *FastQC v0.11.9* (26) before de-novo assembly using the *default Shovill v1.1.0* (27) pipeline settings. Next, the draft assemblies were polished using *pilon v1.24* (28). Finally, the ONT long-reads were de-novo assembled using *flye* assembler v2.8.1 (29) with the plasmid option, followed by one polishing round using *medaka v1.3.2*. All polished draft assemblies from Illumina and ONT sequencing were analyzed in the same way. First, the quality was assessed using *QUAST* (30). Then, the draft assemblies were queried using the *ABRicate* pipeline v1.0.1 against *CARD* (31) to identify AMR genes, *VFDB* (32) to identify virulence factors, and *PlasmidFinder* (33) to identify plasmids. The assemblies were queried against the *Klebsiella MLST* database using the

command line *mlst v2.19* pipeline to determine the sequence types, while the capsule (K) and O types were determined using the *Kleborate* pipeline (34) against the *Kaptive* database (35). Next, a new ybt typing scheme updated in the *Kleborate* pipeline was explored that assigned allelic profiles to yersiniabactin genes (34). Finally, a maximum-likelihood phylogenetic tree was generated using *Parsnp v1.2* (36) and NC_009648.1 as the reference genome. The tables were created using *flextable* (R package), while the circular tree and heatmaps were generated using Interactive Tree of Life (*iToL*) v6.3.2 tree annotator (37).

DECLARATIONS

Data summary

All data generated or analyzed during this study are included in this published article and in the supplementary data files. Six supplementary tables are available on the online Supplementary Material of this article. Eighty-nine genome assemblies are deposited in the NCBI GenBank database under BioProject PRJNA777842. Novel allelic profiles of eight isolates are assigned and deposited in the *K. pneumoniae* MLST database (<https://bigsdB.web.pasteur.fr/>)

Acknowledgments

The authors would like to acknowledge the Kenya Medical Research Institute and the United States Army Medical Research Directorate -Africa staff who carried out the patient sampling, biochemical and antimicrobial susceptibility tests, and the study participants at the participating hospitals. The authors also acknowledge the Walter Reed Army Institute of Research- Multidrug-Resistant Organism Repository and Surveillance Network staff who performed the Illumina sequencing and the Institut Pasteur teams for curating and maintaining the BIGSdb-Pasteur databases at <http://bigsdB.pasteur.fr/>.

Conflicts of Interests

All authors declare they have no competing interests or conflicts of interest.

Funding information

This work was funded by the Armed Forces Health Surveillance Division, Global Emerging Infections Surveillance Branch (PROMIS ID 20160270153 FY17-20). The study funders had no role in the study design, data collection, analysis, decision to publish, or preparation of the manuscript.

Disclaimer

The material for this publication has been reviewed by the Walter Reed Army Institute of Research, and there is no objection to its publication. The opinions or assertions contained herein are the private views of the authors and are not to be construed as official or as reflecting the views of the Department of the Army or the Department of Defense. The investigators have adhered to the policies for the protection of human subjects as prescribed in AR 70-25.

Author Contributions: A. W. M – conceptualization, methodology, formal analysis, investigation, writing – original draft preparation, visualization. Cecilia K. – conceptualization, methodology, visualization. S. K. – methodology, visualization. H. J. S. - writing – original draft preparation. Caleb K. – supervision. M. J. M. – methodology. J. K. – supervision. L. M. – conceptualization, resources, writing – original draft preparation, supervision, funding.

LIST OF ABBREVIATIONS

AME	aminoglycoside modifying enzyme
AMR	antimicrobial resistance
AST	antimicrobial susceptibility test
CAI	community-acquired infection

CARD	Comprehensive Antibiotic Resistance Database
CRE	carbapenemase resistant enterobacteriaceae
ESBL	extended spectrum beta lactamase
HAI	health-acquired infection
KEMRI	Kenya Medical Research Institute
KP	<i>Klebsiella pneumoniae</i>
LPS	lipopolysaccharide
MDR	multidrug resistance
MLST	multilocus sequence type
MRSN	Multidrug-Resistant Organism Repository and Surveillance Network
NCBI	National Center for Biotechnology Information
NDM	New Delhi metallo beta lactamase
ONT	Oxford Nanopore Technology
PMQR	plasmid-mediated quinolone resistance
SSTI	skin and soft tissue infection
ST	sequence type
UTI	urinary tract infection
WHO	World Health Organisation
WRAIR	Walter Reed Army Institute of Research
XDR	extensively drug-resistant

REFERENCES

1. Gomez-Simmonds A, Uhlemann A-C. Clinical Implications of Genomic Adaptation and Evolution of Carbapenem-Resistant *Klebsiella pneumoniae*. J Infect Dis. 2017 Feb 15;215(Suppl 1):S18–27.

2. Wyres KL, Lam MMC, Holt KE. Population genomics of *Klebsiella pneumoniae*. *Nature Reviews Microbiology*. 2020 Jun;18(6):344–59.
3. Girometti N, Lewis RE, Giannella M, Ambretti S, Bartoletti M, Tedeschi S, et al. *Klebsiella pneumoniae* Bloodstream Infection: Epidemiology and Impact of Inappropriate Empirical Therapy. *Medicine*. 2014 Oct;93(17):298–309.
4. NATIONAL ACTION PLAN ON PREVENTION AND CONTAINMENT OF ANTIMICROBIAL RESISTANCE, 2017 -2022 [Internet]. WHO | Regional Office for Africa. 2020 [cited 2020 Mar 3]. Available from: <https://www.afro.who.int/publications/national-action-plan-prevention-and-containment-antimicrobial-resistance-2017-2022>
5. Chen L, Mathema B, Chavda KD, DeLeo FR, Bonomo RA, Kreiswirth BN. Carbapenemase-producing *Klebsiella pneumoniae*: molecular and genetic decoding. *Trends in Microbiology*. 2014 Dec;22(12):686–96.
6. Henson SP, Boinett CJ, Ellington MJ, Kagia N, Mwarumba S, Nyongesa S, et al. Molecular epidemiology of *Klebsiella pneumoniae* invasive infections over a decade at Kilifi County Hospital in Kenya. *Int J Med Microbiol*. 2017 Oct;307(7):422–9.
7. Rawat D, Nair D. Extended-spectrum β -lactamases in gram negative bacteria. *Journal of Global Infectious Diseases*. 2010 Sep 1;2(3):263.
8. Wyres KL, Wick RR, Gorrie C, Jenney A, Follador R, Thomson NR, et al. Identification of *Klebsiella* capsule synthesis loci from whole genome data. *Microbial Genomics*,. 2016;2(12):e000102.
9. Magiorakos A-P, Srinivasan A, Carey RB, Carmeli Y, Falagas ME, Giske CG, et al. Multidrug-resistant, extensively drug-resistant and pandrug-resistant bacteria: an international expert proposal for interim standard definitions for acquired resistance. *Clin Microbiol Infect*. 2012 Mar;18(3):268–81.
10. Taitt CR, Leski TA, Erwin DP, Odundo EA, Kipkemoi NC, Ndonye JN, et al. Antimicrobial resistance of *Klebsiella pneumoniae* stool isolates circulating in Kenya. Butaye P, editor. *PLOS ONE*. 2017 Jun 2;12(6):e0178880.
11. Kyany'a C, Musila L. Colistin Resistance Gene *mcr-8* in a High-Risk Sequence Type 15 *Klebsiella pneumoniae* Isolate from Kenya. *Microbiol Resour Announc* [Internet]. 2020 Sep 24 [cited 2020 Oct 31];9(39). Available from: <https://mra.asm.org/content/9/39/e00783-20>
12. Apondi OE, Oduor OC, Gye BK, Kipkoech MK. HIGH PREVALENCE OF MULTI-DRUG RESISTANT *KLEBSIELLA PNEUMONIAE* IN A TERTIARY TEACHING HOSPITAL IN WESTERN KENYA. *AJID*. 2016 Jun 1;10(2):89–95.
13. Decano AG, Pettigrew K, Sabiiti W, Sloan D, Neema S, Bazira J, et al. Pan-resistome characterization of uropathogenic *Escherichia coli* and *Klebsiella pneumoniae* strains circulating in Uganda and Kenya isolated from 2017-2018. *medRxiv*. 2020 Mar 16;2020.03.11.20034389.
14. Maina D, Revathi G, Whitelaw AC. Molecular characterization of multidrug-resistant *Klebsiella pneumoniae* and *Escherichia coli* harbouring extended spectrum beta-lactamases and

carbapenemases genes at a tertiary hospital, Kenya. *Microbiologia Medica* [Internet]. 2017 Dec 30 [cited 2020 Feb 15];32(4). Available from: <https://www.pagepressjournals.org/index.php/mm/article/view/7076>

15. Poirel L, Revathi G, Bernabeu S, Nordmann P. Detection of NDM-1-Producing *Klebsiella pneumoniae* in Kenya. *Antimicrob Agents Chemother*. 2011 Feb;55(2):934–6.
16. Bururia JM, Kinyanjui PN, Waiyaki PG, Kariuki SM. Resistance of *Klebsiella* Species Isolates From Two Institutions in Nairobi, Kenya, to Commonly Prescribed Antimicrobial Agents. *East and Central African Journal of Pharmaceutical Sciences*. 2007;10(1):22–6.
17. Maina D, Revathi G, Kariuki S, Ozwara H. Genotypes and cephalosporin susceptibility in extended-spectrum beta-lactamase producing enterobacteriaceae in the community. *J Infect Dev Ctries*. 2012 Jun 15;6(6):470–7.
18. Maina J, Ndung'u P, Muigai A, Kiiru J. Antimicrobial resistance profiles and genetic basis of resistance among non-fastidious Gram-negative bacteria recovered from ready-to-eat foods in Kibera informal housing in Nairobi, Kenya. *Access Microbiol*. 2021 Jun 11;3(6):000236.
19. Alcántar-Curiel MD, Ledezma-Escalante CA, Jarillo-Quijada MD, Gayosso-Vázquez C, Morfín-Otero R, Rodríguez-Noriega E, et al. Association of Antibiotic Resistance, Cell Adherence, and Biofilm Production with the Endemicity of Nosocomial *Klebsiella pneumoniae*. *BioMed Research International*. 2018 Sep 23;2018:1–9.
20. Barbosa VAA, Lery LMS. Insights into *Klebsiella pneumoniae* type VI secretion system transcriptional regulation. *BMC Genomics*. 2019 Jun 18;20(1):506.
21. Huynh DTN, Kim A-Y, Kim Y-R. Identification of Pathogenic Factors in *Klebsiella pneumoniae* Using Impedimetric Sensor Equipped with Biomimetic Surfaces. *Sensors*. 2017 Jun;17(6):1406.
22. Ni RT, Onishi M, Mizusawa M, Kitagawa R, Kishino T, Matsubara F, et al. The role of RND-type efflux pumps in multidrug-resistant mutants of *Klebsiella pneumoniae*. *Sci Rep*. 2020 Jul 2;10(1):10876.
23. Paczosa MK, Meccas J. *Klebsiella pneumoniae*: Going on the Offense with a Strong Defense. *Microbiol Mol Biol Rev*. 2016 Sep 1;80(3):629–61.
24. Musila L, Kyany'a C, Maybank R, Stam J, Oundo V, Sang W. Detection of diverse carbapenem and multidrug resistance genes and high-risk strain types among carbapenem non-susceptible clinical isolates of target gram-negative bacteria in Kenya. *PLoS One*. 2021;16(2):e0246937.
25. Bolger AM, Lohse M, Usadel B. Trimmomatic: a flexible trimmer for Illumina sequence data. *Bioinformatics*. 2014 Aug 1;30(15):2114–20.
26. Andrews S, Krueger F, Segonds-Pichon A, Biggins L, Krueger C, Wingett S. FastQC: A Quality Control Tool for High Throughput Sequence Data. 2010.
27. Seemann T. Shovill: Faster SPAdes Assembly of Illumina Reads (v1. 1.0). 2018.

28. Walker BJ, Abeel T, Shea T, Priest M, Abouelliel A, Sakthikumar S, et al. Pilon: An Integrated Tool for Comprehensive Microbial Variant Detection and Genome Assembly Improvement. *PLOS ONE*. 2014 Nov 19;9(11):e112963.
29. Kolmogorov M, Yuan J, Lin Y, Pevzner PA. Assembly of long, error-prone reads using repeat graphs. *Nat Biotechnol*. 2019 May;37(5):540–6.
30. Gurevich A, Saveliev V, Vyahhi N, Tesler G. QUAST: quality assessment tool for genome assemblies. *Bioinformatics*. 2013 Apr 15;29(8):1072–5.
31. Alcock BP, Raphenya AR, Lau TTY, Tsang KK, Bouchard M, Edalatmand A, et al. CARD 2020: antibiotic resistome surveillance with the comprehensive antibiotic resistance database. *Nucleic Acids Research*. 2020 Jan 8;48(D1):D517–25.
32. Chen L, Yang J, Yu J, Yao Z, Sun L, Shen Y, et al. VFDB: a reference database for bacterial virulence factors. *Nucleic Acids Res*. 2005 Jan 1;33(Database issue):D325–328.
33. Carattoli A, Zankari E, García-Fernández A, Larsen MV, Lund O, Villa L, et al. In Silico Detection and Typing of Plasmids using PlasmidFinder and Plasmid Multilocus Sequence Typing. *Antimicrobial Agents and Chemotherapy*. 2014 Jul 1;58(7):3895–903.
34. Lam MMC, Wick RR, Watts SC, Cerdeira LT, Wyres KL, Holt KE. A genomic surveillance framework and genotyping tool for *Klebsiella pneumoniae* and its related species complex. *Nat Commun*. 2021 Jul 7;12(1):4188.
35. Wick RR, Heinz E, Holt KE, Wyres KL. Kaptive Web: User-Friendly Capsule and Lipopolysaccharide Serotype Prediction for *Klebsiella* Genomes. *Journal of Clinical Microbiology* [Internet]. 2018 Jun 1 [cited 2020 Feb 15];56(6). Available from: <https://jcm.asm.org/content/56/6/e00197-18>
36. Treangen TJ, Ondov BD, Koren S, Phillippy AM. The Harvest suite for rapid core-genome alignment and visualization of thousands of intraspecific microbial genomes. *Genome Biology*. 2014 Nov 19;15(11):524.
37. Letunic I, Bork P. Interactive Tree Of Life (iTOL) v4: recent updates and new developments. *Nucleic Acids Res*. 2019 Jul 2;47(W1):W256–9.
38. Liu P, Li P, Jiang X, Bi D, Xie Y, Tai C, et al. Complete Genome Sequence of *Klebsiella pneumoniae* subsp. *pneumoniae* HS11286, a Multidrug-Resistant Strain Isolated from Human Sputum. *J Bacteriol*. 2012 Apr;194(7):1841–2.
39. Lam MMC, Wyres KL, Judd LM, Wick RR, Jenney A, Brisse S, et al. Tracking key virulence loci encoding aerobactin and salmochelin siderophore synthesis in *Klebsiella pneumoniae*. *Genome Med* [Internet]. 2018 Oct 29 [cited 2020 Jun 22];10. Available from: <https://www.ncbi.nlm.nih.gov/pmc/articles/PMC6205773/>
40. Fang C-T, Chuang Y-P, Shun C-T, Chang S-C, Wang J-T. A Novel Virulence Gene in *Klebsiella pneumoniae* Strains Causing Primary Liver Abscess and Septic Metastatic Complications. *J Exp Med*. 2004 Mar 1;199(5):697–705.

41. Hennequin C, Robin F. Correlation between antimicrobial resistance and virulence in *Klebsiella pneumoniae*. *Eur J Clin Microbiol Infect Dis*. 2016 Mar 1;35(3):333–41.
42. Heinz E, Brindle R, Morgan-McCalla A, Peters K, Thomson NR. Caribbean multi-centre study of *Klebsiella pneumoniae*: whole- genome sequencing, antimicrobial resistance and virulence factors. *Microbial Genomics*. :12.
43. Holt KE, Wertheim H, Zadoks RN, Baker S, Whitehouse CA, Dance D, et al. Genomic analysis of diversity, population structure, virulence, and antimicrobial resistance in *Klebsiella pneumoniae*, an urgent threat to public health. *PNAS*. 2015 Jul 7;112(27):E3574–81.
44. Musicha P, Msefula CL, Mather AE, Chaguza C, Cain AK, Peno C, et al. Genomic analysis of *Klebsiella pneumoniae* isolates from Malawi reveals acquisition of multiple ESBL determinants across diverse lineages. *J Antimicrob Chemother*. 2019 May 1;74(5):1223–32.
45. Imai K, Ishibashi N, Kodana M, Tarumoto N, Sakai J, Kawamura T, et al. Clinical characteristics in blood stream infections caused by *Klebsiella pneumoniae*, *Klebsiella variicola*, and *Klebsiella quasipneumoniae*: a comparative study, Japan, 2014-2017. *BMC Infect Dis*. 2019 Nov 8;19(1):946.
46. Maatallah M, Vading M, Kabir MH, Bakhrouf A, Kalin M, Nauc ler P, et al. *Klebsiella variicola* is a frequent cause of bloodstream infection in the stockholm area, and associated with higher mortality compared to *K. pneumoniae*. *PLoS One*. 2014;9(11):e113539.
47. Elliott AG, Ganesamoorthy D, Coin L, Cooper MA, Cao MD. Complete Genome Sequence of *Klebsiella quasipneumoniae* subsp. *similipneumoniae* Strain ATCC 700603. *Genome Announcements*. 4(3):e00438-16.
48. Nicol s MF, Ramos PIP, Marques de Carvalho F, Camargo DRA, de F tima Morais Alves C, Loss de Morais G, et al. Comparative Genomic Analysis of a Clinical Isolate of *Klebsiella quasipneumoniae* subsp. *similipneumoniae*, a KPC-2 and OKP-B-6 Beta-Lactamases Producer Harboring Two Drug-Resistance Plasmids from Southeast Brazil. *Front Microbiol*. 2018;9:220.
49. Furlan JPR, Gallo IFL, de Campos TA, Stehling EG. Genomic Characterization of a Multidrug-Resistant and Hypermucoviscous/Hypervirulent *Klebsiella quasipneumoniae* subsp. *similipneumoniae* ST4417 Isolated from a Sewage Treatment Plant. *Microbial Drug Resistance*. 2020 Nov 1;26(11):1321–5.
50. Li C-F, Tang H-L, Chiou C-S, Tung K-C, Lu M-C, Lai Y-C. Draft genome sequence of CTX-M-type β -lactamase-producing *Klebsiella quasipneumoniae* subsp. *similipneumoniae* isolated from a Box turtle. *J Glob Antimicrob Resist*. 2018 Mar 1;12:235–6.
51. de Lagarde M, Vanier G, Arsenault J, Fairbrother JM. High Risk Clone: A Proposal of Criteria Adapted to the One Health Context with Application to Enterotoxigenic *Escherichia coli* in the Pig Population. *Antibiotics (Basel)*. 2021 Feb 28;10(3):244.
52. Giske CG, Fr ding I, Hasan CM, Turlej-Rogacka A, Toleman M, Livermore D, et al. Diverse Sequence Types of *Klebsiella pneumoniae* Contribute to the Dissemination of blaNDM-1 in India, Sweden, and the United Kingdom. *Antimicrobial Agents and Chemotherapy*. 2012 May 1;56(5):2735–8.

53. Lee C-R, Lee JH, Park KS, Jeon JH, Kim YB, Cha C-J, et al. Antimicrobial Resistance of Hypervirulent *Klebsiella pneumoniae*: Epidemiology, Hypervirulence-Associated Determinants, and Resistance Mechanisms. *Front Cell Infect Microbiol* [Internet]. 2017 [cited 2020 Feb 24];7. Available from: <https://www.frontiersin.org/articles/10.3389/fcimb.2017.00483/full>
54. Mshana SE, Hain T, Domann E, Lyamuya EF, Chakraborty T, Imirzalioglu C. Predominance of *Klebsiella pneumoniae* ST14 carrying CTX-M-15 causing neonatal sepsis in Tanzania. *BMC Infectious Diseases*. 2013 Oct 7;13(1):466.
55. Sonda T, Kumburu H, van Zwetselaar M, Alifrangis M, Mmbaga BT, Lund O, et al. Molecular epidemiology of virulence and antimicrobial resistance determinants in *Klebsiella pneumoniae* from hospitalised patients in Kilimanjaro, Tanzania. *Eur J Clin Microbiol Infect Dis*. 2018 Oct;37(10):1901–14.
56. Peltier F, Choquet M, Decroix V, Adjidé CC, Castelain S, Guiheneuf R, et al. Characterization of a multidrug-resistant *Klebsiella pneumoniae* ST607-K25 clone responsible for a nosocomial outbreak in a neonatal intensive care unit. *Journal of Medical Microbiology*. 68(1):67–76.
57. Carattoli A. Resistance plasmid families in Enterobacteriaceae. *Antimicrob Agents Chemother*. 2009 Jun;53(6):2227–38.
58. Rozwandowicz M, Brouwer MSM, Fischer J, Wagenaar JA, Gonzalez-Zorn B, Guerra B, et al. Plasmids carrying antimicrobial resistance genes in Enterobacteriaceae. *Journal of Antimicrobial Chemotherapy*. 2018 May 1;73(5):1121–37.
59. Villa L, García-Fernández A, Fortini D, Carattoli A. Replicon sequence typing of IncF plasmids carrying virulence and resistance determinants. *Journal of Antimicrobial Chemotherapy*. 2010 Dec 1;65(12):2518–29.
60. Papagiannitsis CC, Miriagou V, Giakkoupi P, Tzouveleki LS, Vatopoulos AC. Characterization of pKP1433, a novel KPC-2-encoding plasmid from *Klebsiella pneumoniae* sequence type 340. *Antimicrob Agents Chemother*. 2013 Jul;57(7):3427–9.
61. Perlaza-Jiménez L, Wu Q, Torres VVL, Zhang X, Li J, Rocker A, et al. Forensic genomics of a novel *Klebsiella quasipneumoniae* type from a neonatal intensive care unit in China reveals patterns of colonization, evolution and epidemiology. *Microb Genom*. 2020 Sep 15;6(10):mgen000433.
62. Bachman MA, Lenio S, Schmidt L, Oyler JE, Weiser JN. Interaction of lipocalin 2, transferrin, and siderophores determines the replicative niche of *Klebsiella pneumoniae* during pneumonia. *mBio*. 2012 Nov 20;3(6):e00224-11.
63. Chaturvedi KS, Hung CS, Crowley JR, Stapleton AE, Henderson JP. The siderophore yersiniabactin binds copper to protect pathogens during infection. *Nat Chem Biol*. 2012 Aug;8(8):731–6.
64. Surgers L, Boyd A, Girard P-M, Arlet G, Decré D. ESBL-Producing Strain of Hypervirulent *Klebsiella pneumoniae* K2, France. *Emerg Infect Dis*. 2016 Sep;22(9):1687–8.

65. Banerjee T, Wangkheimayum J, Sharma S, Kumar A, Bhattacharjee A. Extensively Drug-Resistant Hypervirulent *Klebsiella pneumoniae* From a Series of Neonatal Sepsis in a Tertiary Care Hospital, India. *Frontiers in Medicine*. 2021;8:186.
66. Cejas D, Elena A, Guevara Nuñez D, Sevillano Platero P, De Paulis A, Magariños F, et al. Changing epidemiology of KPC-producing *Klebsiella pneumoniae* in Argentina: Emergence of hypermucoviscous ST25 and high-risk clone ST307. *Journal of Global Antimicrobial Resistance*. 2019 Sep 1;18:238–42.
67. Turton J, Davies F, Turton J, Perry C, Payne Z, Pike R. Hybrid Resistance and Virulence Plasmids in “High-Risk” Clones of *Klebsiella pneumoniae*, Including Those Carrying blaNDM-5. *Microorganisms*. 2019 Sep;7(9):326.
68. Yuan Y, Li Y, Wang G, Li C, Chang Y-F, Chen W, et al. blaNDM-5 carried by a hypervirulent *Klebsiella pneumoniae* with sequence type 29. *Antimicrobial Resistance & Infection Control*. 2019 Aug 19;8(1):140.
69. Lam MMC, Wyres KL, Wick RR, Judd LM, Fostervold A, Holt KE, et al. Convergence of virulence and MDR in a single plasmid vector in MDR *Klebsiella pneumoniae* ST15. *J Antimicrob Chemother*. 2019 May;74(5):1218–22.

Supplementary Material captions

Supplementary Table 1 - Genomic and epidemiological characteristics of *K. pneumoniae* isolates

Supplementary Table 2 - Plasmids replicons present in the *K. pneumoniae* isolates

Supplementary Table 3 - Phenotypic antimicrobial susceptibility test (AST) results of the *K. pneumoniae* isolates

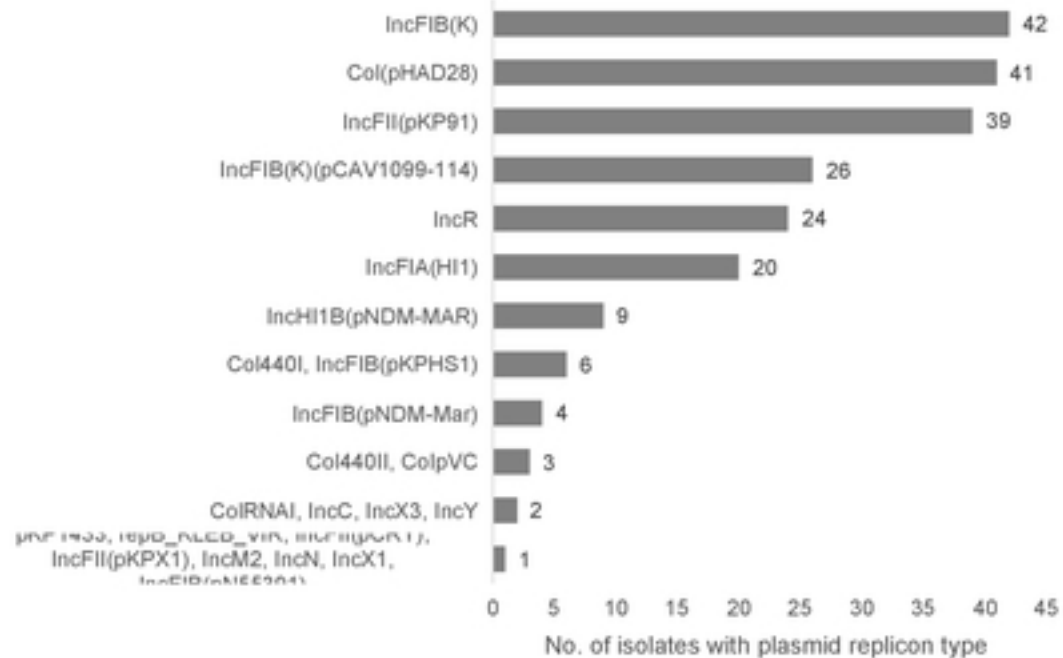
Supplementary Table 4 - Antimicrobial resistance genes in the *K. pneumoniae* isolates

Supplementary Table 5 - Virulence genes identified in the *K. pneumoniae* isolates

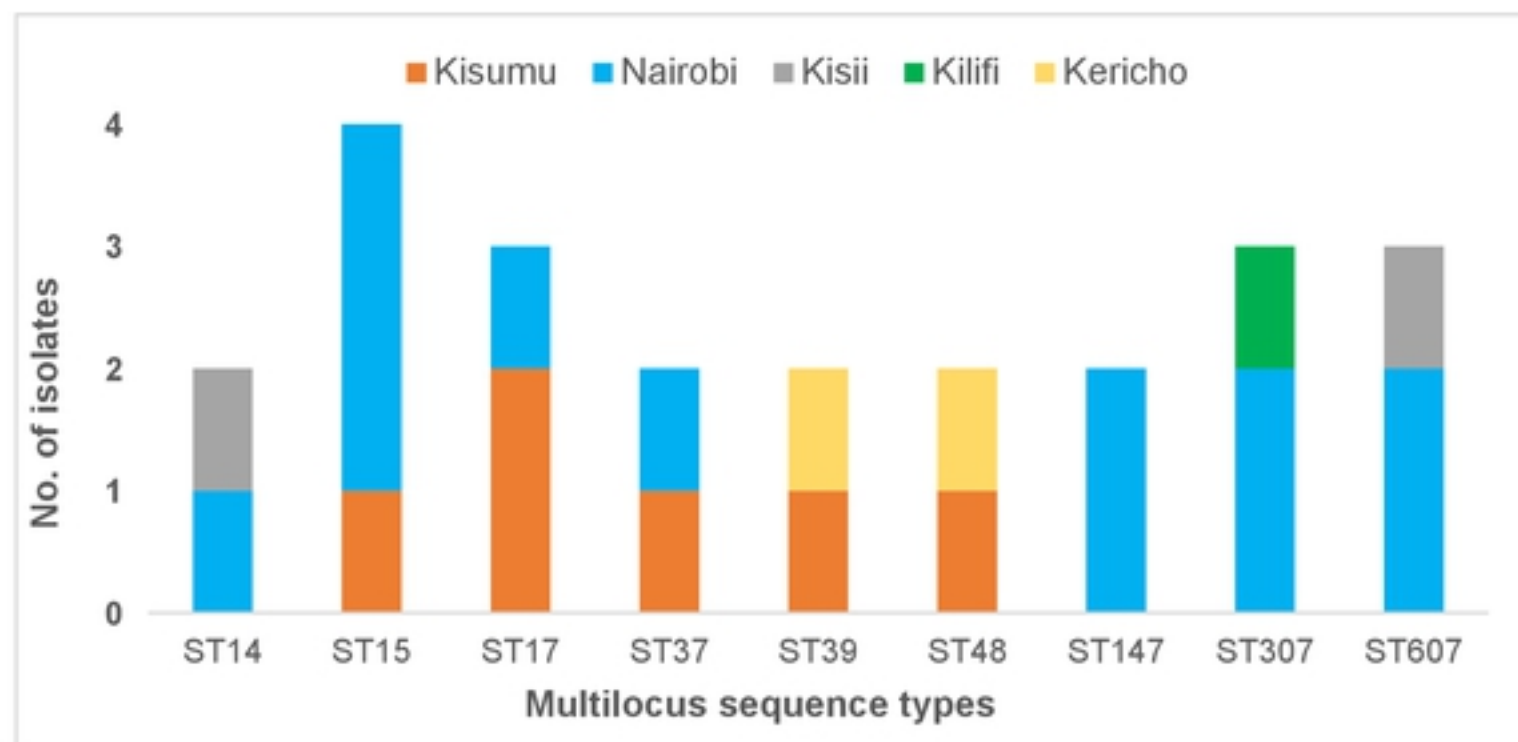
Supplementary Table 6 - Fluoroquinolone mutations identified in the *K. pneumoniae* isolates

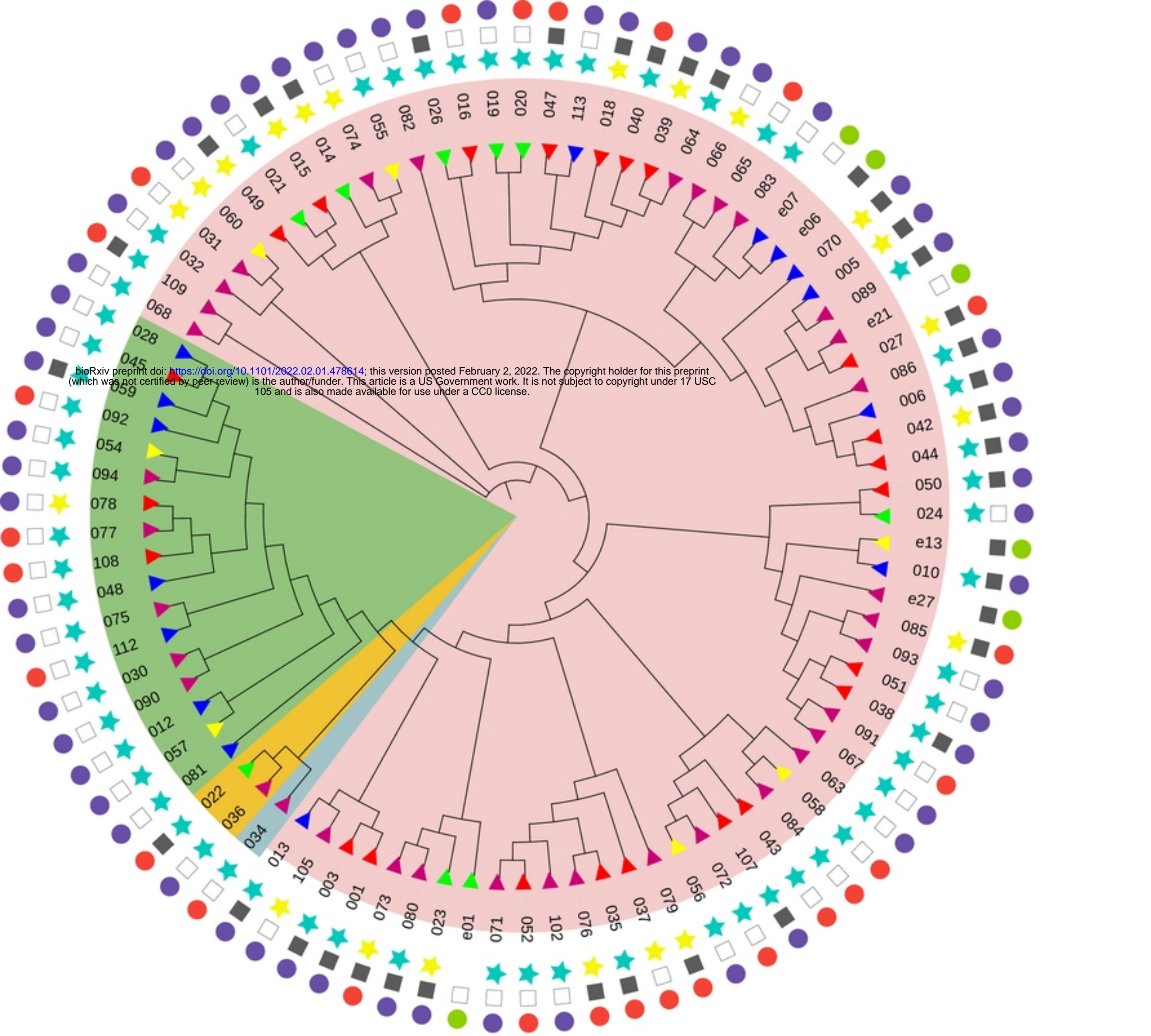
Plasmid replicon type	No. of with plasmid replicon type
pKP1433, repB_KLEB_VIR, IncFII(pCRY), IncFII(pKPX1), IncM2, IncN, IncX1, IncFIB(pN55391)	1
ColRNAI, IncC, IncX3, IncY	2
Col440II, ColpVC	3
IncFIB(pNDM-Mar)	4
Col440I, IncFIB(pKPHS1)	6
IncHI1B(pNDM-MAR)	9
IncFIA(HI1)	20
IncR	24
IncFIB(K)(pCAV1099-114)	26
IncFII(pKP91)	39
Col(pHAD28)	41
IncFIB(K)	42

Plasmid replicon type



Multilocus sequence types	Kisumu	Nairobi	Kisii	Kilifi	Kericho
ST14			1	1	
ST15	1	3			
ST17	2	1			
ST37	1	1			
ST39	1				1
ST48	1				1
ST147		2			
ST307		2		1	
ST607		2	1		





bioRxiv preprint doi: <https://doi.org/10.1101/2022.02.01.478614>; this version posted February 2, 2022. The copyright holder for this preprint (which was not certified by peer review) is the author/funder. This article is a US Government work. It is not subject to copyright under 17 USC 105 and is also made available for use under a CC0 license.

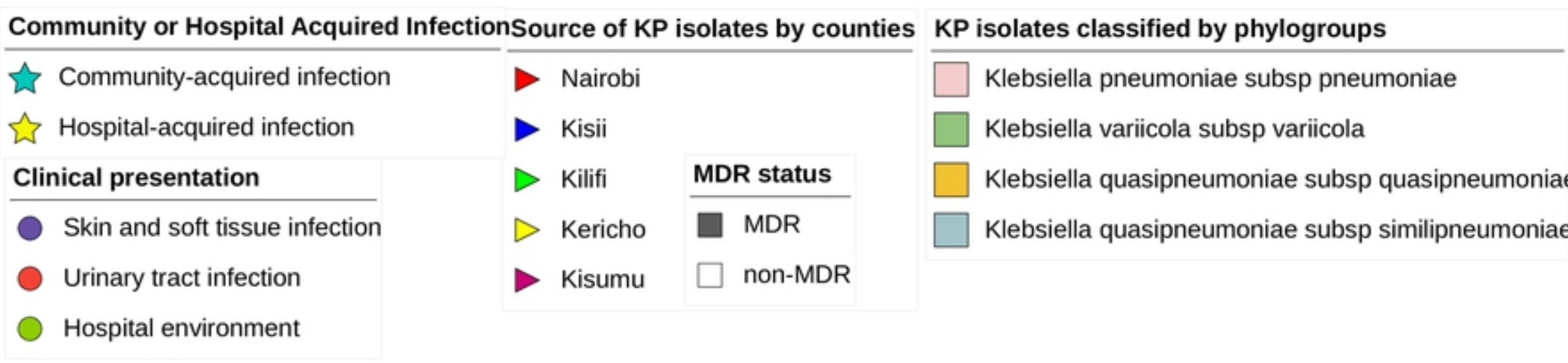


Figure 1

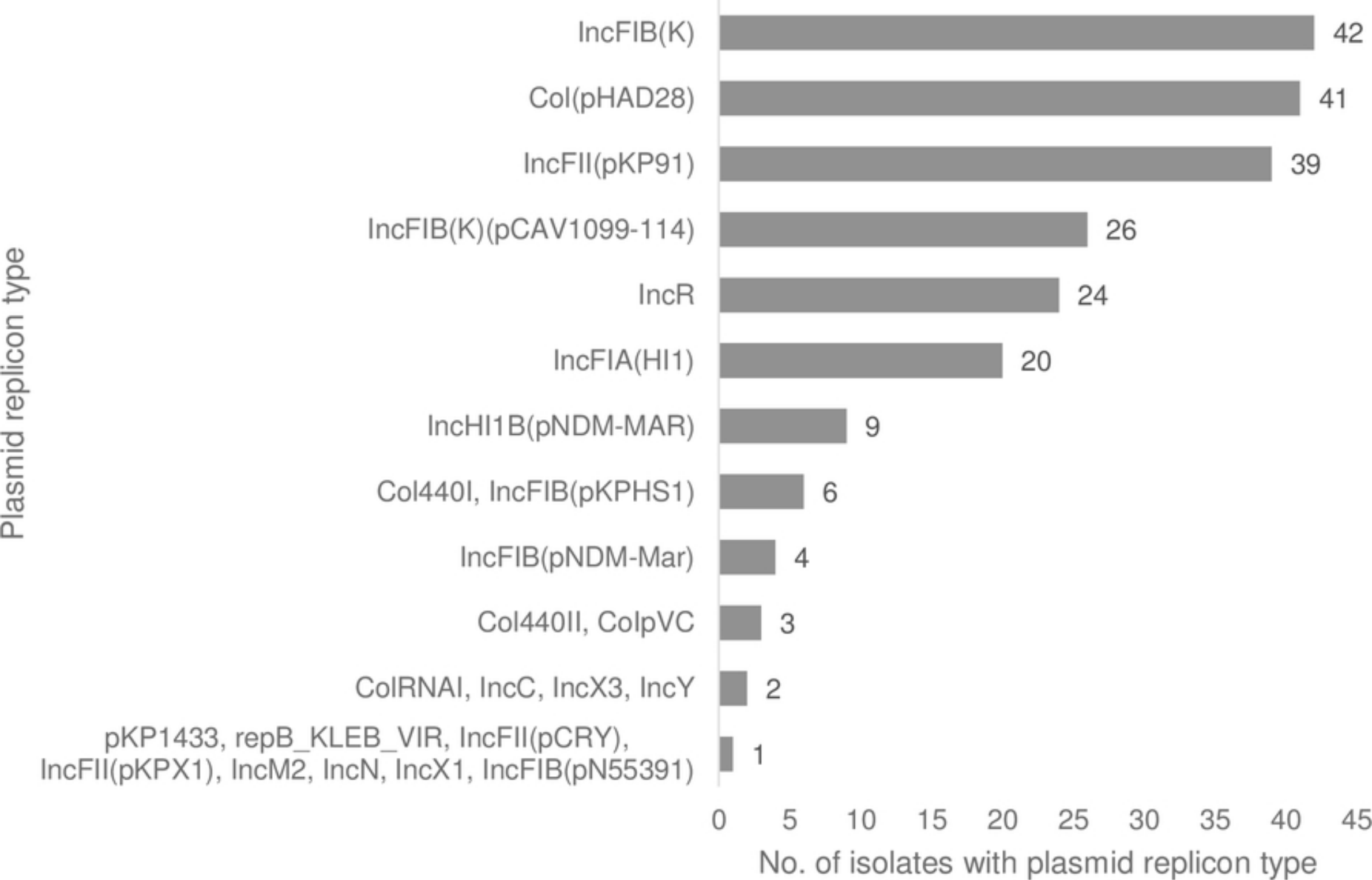


Figure 2

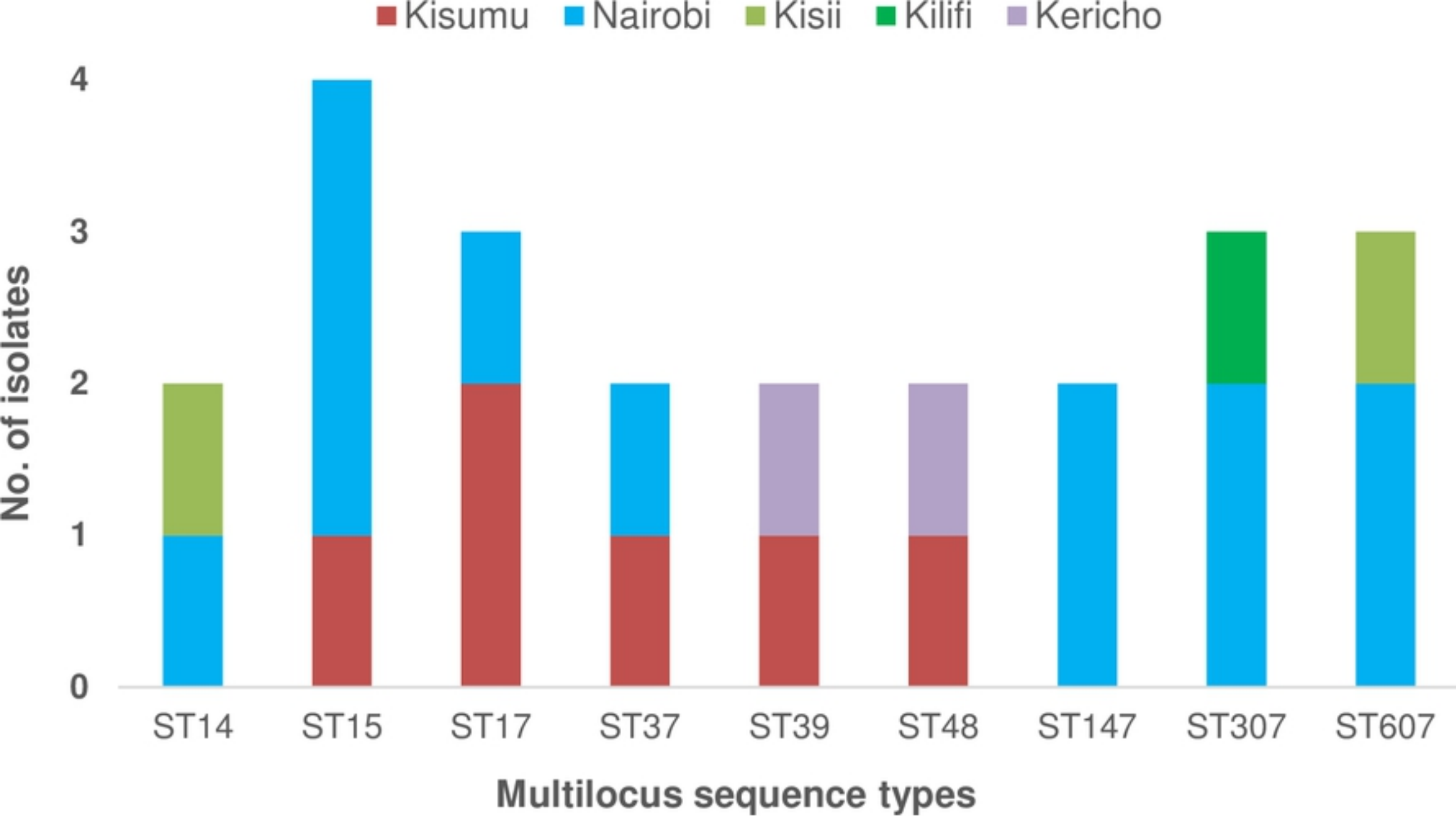


Figure 3

bioRxiv preprint doi: <https://doi.org/10.1101/2022.02.01.478614>; this version posted February 2, 2022. The copyright holder for this preprint (which was not certified by peer review) is the author/funder. This article is a US Government work. It is not subject to copyright under 17 USC 105 and is also made available under aCC-BY 4.0 International license.

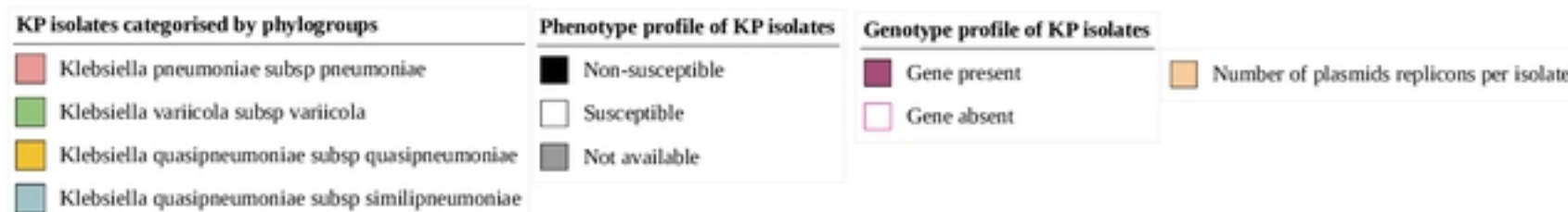
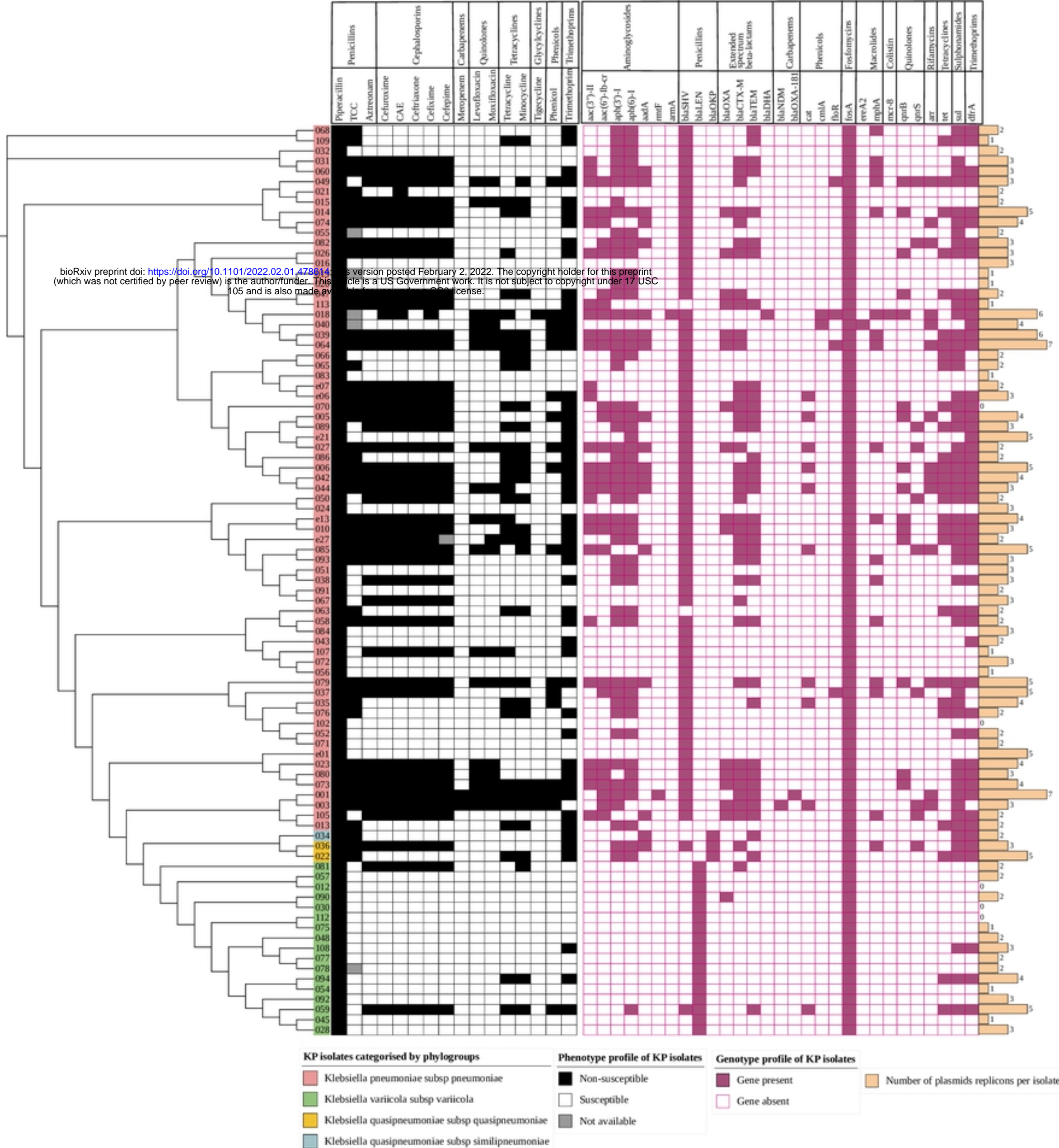
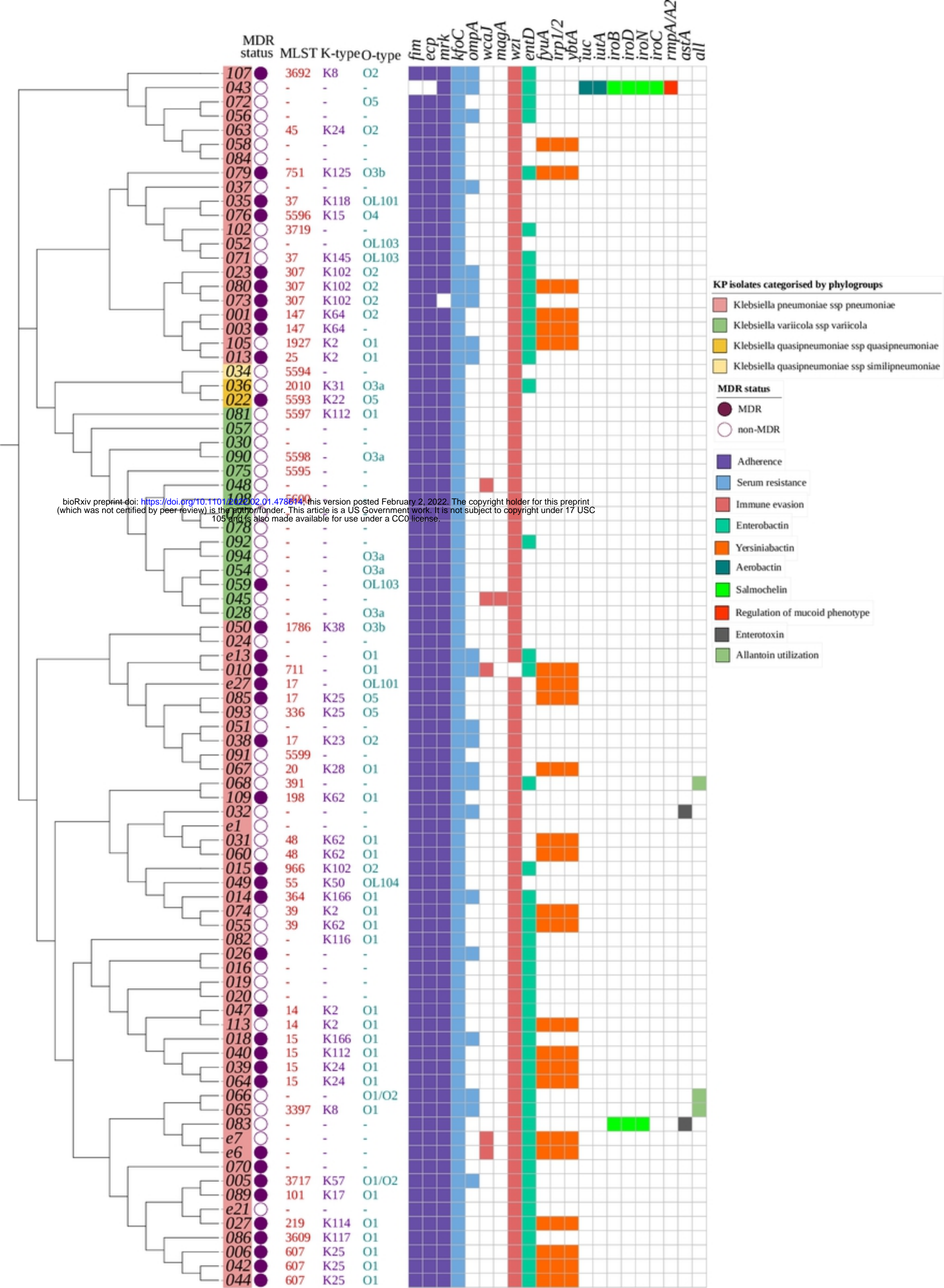


Figure 4



bioRxiv preprint doi: <https://doi.org/10.1101/2022.02.01.478614>; this version posted February 2, 2022. The copyright holder for this preprint (which was not certified by peer review) is the author/funder. This article is a US Government work. It is not subject to copyright under 17 USC 105 and is also made available for use under a CC0 license.

Figure 5